



# Annual Report

## Ben Gurion International Airport

Year 2018



# Israel Airport Authority

## Ben Gurion International Airport

### Produced by the Industry & Management Department

**This report is protected by copyright and is the exclusive property of the Israel Airports Authority.**

**It must be emphasized that the data in the report are based on the reports of the airlines, and received under their responsibility.**

**The information is intended for personal use, and therefore may not be quoted or passed on to any third party without written permission from the Israel Airports Authority.**

**In addition, no commercial use may be made of this report.**

#### **Edit Yehoshua**

Activity Coordinator

Tel. +972-3-9752017

Email: [edity@iaa.gov.il](mailto:edity@iaa.gov.il)

#### **Rachel Lehava**

Manager, Industrial & Management Dep.

Tel. +972-3-9752019

Email: [rachelle@iaa.gov.il](mailto:rachelle@iaa.gov.il)

#### **Yossi Tzemach**

Head, Industrial & Management Dep.

Tel. +972-3-9752020

Email: [yossiz@iaa.gov.il](mailto:yossiz@iaa.gov.il)



Dear Activity partners, Customers, Employees and Managers of Ben-Gurion Airport and the Israel Airports Authority.

In 2017 the all-time record of the increase of international passenger and aircraft traffic at Ben-Gurion International Airport was broken and surpassed the high bar of 20 million passengers.

Terminal 1 started a complete departing passenger procedure, including duty free and boarding gates and international traffic has reached 1.5 million international departing passengers.

We are in the midst of several ongoing projects: extending Terminal 1 to adapt to the traffic increase, absorption of the 4th concourse, absorption and operation of new aprons (Apron H), extending the parking lots and continuing to promote the development of infrastructure for the absorption of traffic and passenger increase in future years.

The service rendered to the customers, passengers and airlines will continue to be the value and purpose of our activities.

I would like to express my full appreciation to all our colleagues: airlines, concession holders, ground handling agents, activity partners, state authorities and especially to the devoted employees and managers of Ben-Gurion Airport.

Together we will continue to develop the international aviation in Israel.

Thank you all!



Dear friends and partners,

I hereby respectfully submit for your review a report summarizing the aviation activity at Ben - Gurion International Airport in 2018.

During the year, a total of 22,949,676 passengers on 157,312 international and domestic flights passed through Ben- Gurion Airport.

International passenger traffic in 2018 totaled 22,357,736 passengers, representing an increase of 10.75% compared to 2017.

International aircraft traffic totaled 151,318 flights, representing an increase of 10.48% compared to 2017.

On domestic flights 591,940 passengers passed through Ben- Gurion Airport this year, compared with 593,725 in 2017, a decrease of 0.3%.

During the year cargo weighing a total 0.3 tons as handled, representing 349,677 of an increase% compared with 2.55 in 2017.

Israeli airlines carried 6,981,733 passengers in 2018, 31.22% of all travelers passing through Ben - Gurion Airport, a decrease of 1.09% relative to the previous year.

The airlines which contributed the most to the increase of passenger traffic this year are: WIZZAIR, EASYJET and UKRAINE INTL AIR.

The Destination with the highest volume of activity was ISTANBUL-ATATURK, with a total of 1,071,531 passengers to and from, an increase of 13.24% compared to the previous year.

The country with the highest volume of activity was TURKEY, with 2,113,036 passengers, constituting 9.45% of all activity.

Of the leading countries, the highest growth relative to last year was recorded in passenger traffic to ITALY, POLAND and FRANCE.

Below you will find additional tables providing details about movements of aircraft, passengers and cargo at Ben - Gurion International Airport.

Sincerely yours,

**Shmuel Zakay**

Managing Director,

Ben-Gurion International Airport



# Content



## Aviation Activity

Aviation Activity Summary	1
International Activity Summary	2 - 4
Domestic Activity Summary	5



## International Activity

Distribution By Months	7 - 8
Distribution By Airlines	9 - 13
Distribution By Countries	14 - 16
Distribution By First Destination	17 - 21



## Cargo Activity

Distribution by Transporter	23
Distribution By Months	23
Distribution By Airlines	24 - 26
Distribution By Countries	27



## Domestic Activity

Distribution By Months	29 - 30
Distribution By Airlines	31





# Passengers and Aircrafts

## Aviation Activity at Ben Gurion International Airport

### International Activity

	Accumulated Since the beginning of the year		
	2018	2017	Rate Of Change
Incoming Aircraft	75,636	68,456	10.48%
Outgoing Aircraft	75,682	68,500	10.48%
<b>Total Aircraft</b>	<b>151,318</b>	<b>136,956</b>	<b>10.48%</b>
Incoming Passengers	11,179,452	10,100,792	10.67%
Outgoing Passengers	11,178,284	10,086,535	10.82%
Transit Passengers	3,845	2,459	56.36%
<b>Total Passengers</b>	<b>22,357,736</b>	<b>20,187,327</b>	<b>10.75%</b>

### Domestic Activity

	Accumulated Since the beginning of the year		
	2018	2017	Rate Of Change
Aircraft	5,994	5,982	0.20%
Passengers	591,940	593,725	-0.30%

### International and Domestic Activity Summary

	Accumulated Since the beginning of the year		
	2018	2017	Rate Of Change
Aircraft	157,312	142,938	10.05%
Passengers	22,949,676	20,781,052	10.43%





# Passengers and Aircrafts

## Int'l Aviation Activity at Ben Gurion International Airport by Terminal

### Terminal 3

	Accumulated Since the beginning of the year		
	2018	2017	Rate of Change
Incoming Aircraft	75,636	68,456	10.48%
Outgoing Aircraft	62,906	59,264	6.14%
<b>Total Aircraft</b>	<b>138,542</b>	<b>127,720</b>	<b>8.47%</b>
Incoming Passengers	11,179,452	10,100,792	10.67%
Outgoing Passengers	9,135,112	8,606,569	6.14%
Transit Passengers	3,845	2,459	56.36%
<b>Total Passengers</b>	<b>20,314,564</b>	<b>18,707,361</b>	<b>8.59%</b>

### Terminal 1

	Accumulated Since the beginning of the year		
	2018	2017	Rate of Change
Incoming Aircraft			
Outgoing Aircraft	12,776	9,236	38.32%
<b>Total Aircraft</b>	<b>12,776</b>	<b>9,236</b>	<b>38.32%</b>
Incoming Passengers			
Outgoing Passengers	2,043,172	1,479,966	38.05%
<b>Total Passengers</b>	<b>2,043,172</b>	<b>1,479,966</b>	<b>38.05%</b>





# Passengers and Aircrafts

Int'l Aviation Activity at Ben Gurion International Airport by Flight Type

## Schedule and Charter Flights

	Accumulated Since the beginning of the year		
	2018	2017	Rate of Change
Incoming Aircraft	70,375	63,387	11.02%
Outgoing Aircraft	70,347	63,381	10.99%
<b>Total Aircraft</b>	<b>140,722</b>	<b>126,768</b>	<b>11.00%</b>
Incoming Passengers	11,165,224	10,086,920	10.69%
Outgoing Passengers	11,164,626	10,073,601	10.83%
Transit Passengers	3,845	2,458	56.42%
<b>Total Passengers</b>	<b>22,329,850</b>	<b>20,160,521</b>	<b>10.76%</b>

## Private Flights

	Accumulated Since the beginning of the year		
	2018	2017	Rate of Change
Incoming Aircraft	2,833	2,608	8.62%
Outgoing Aircraft	2,897	2,646	9.48%
<b>Total Aircraft</b>	<b>5,730</b>	<b>5,254</b>	<b>9.05%</b>
Incoming Passengers	9,955	8,917	11.64%
Outgoing Passengers	9,737	8,639	12.70%
<b>Total Passengers</b>	<b>19,692</b>	<b>17,556</b>	<b>12.16%</b>







# Passengers and Aircrafts

## Int'l Aviation Activity at Ben Gurion International Airport by Flight Type

### Cargo Flights

	Accumulated Since the beginning of the year		
	2018	2017	Rate of Change
Incoming Aircraft	2,147	2,209	-2.80%
Outgoing Aircraft	2,141	2,213	-3.25%
<b>Total Aircraft</b>	<b>4,288</b>	<b>4,422</b>	<b>-3.03%</b>
Incoming Passengers	967	1,074	-9.96%
Outgoing Passengers	918	1,291	-28.89%
<b>Total Passengers</b>	<b>1,885</b>	<b>2,365</b>	<b>-20.29%</b>

### Other Flights

	Accumulated Since the beginning of the year		
	2018	2017	Rate of Change
Incoming Aircraft	281	252	11.50%
Outgoing Aircraft	297	260	14.23%
<b>Total Aircraft</b>	<b>578</b>	<b>512</b>	<b>12.89%</b>
Incoming Passengers	3,306	3,881	-14.81%
Outgoing Passengers	3,003	3,004	-0.03%
<b>Total Passengers</b>	<b>6,309</b>	<b>6,885</b>	<b>-8.36%</b>





# Passengers and Aircrafts

## Domestic Aviation Activity at Ben Gurion International Airport by Flight Type

### Schedule Flights

	Accumulated Since the beginning of the year		
	2018	2017	Rate of Change
Aircraft	4,852	4,676	3.76%
Passengers	588,609	588,828	-0.03%

### Private Flights

	Accumulated Since the beginning of the year		
	2018	2017	Rate of Change
Aircraft	561	512	9.57%
Passengers	466	478	-2.51%

### Other Flights

	Accumulated Since the beginning of the year		
	2018	2017	Rate of Change
Aircraft	581	794	-26.82%
Passengers	2,865	4,419	-35.16%



# International Activity

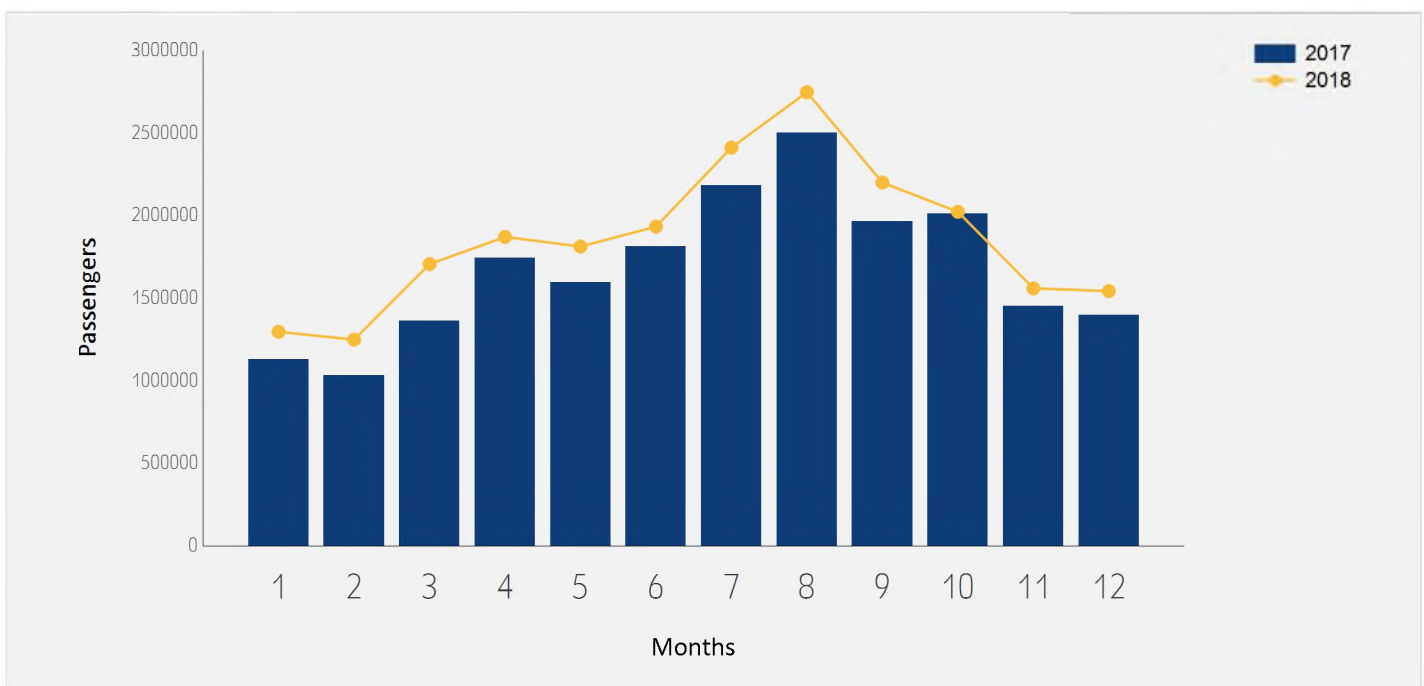




# International Passenger Traffic

## Distribution by Months

Months	2018	2017	Rate of Change
January	1,296,898	1,127,762	14.99%
February	1,249,161	1,033,619	20.85%
March	1,706,615	1,362,323	25.27%
April	1,871,147	1,742,455	7.38%
May	1,813,145	1,594,499	13.71%
June	1,933,843	1,815,294	6.53%
July	2,412,296	2,181,140	10.59%
August	2,747,676	2,503,173	9.76%
September	2,200,346	1,966,915	11.86%
October	2,023,545	2,010,885	0.62%
November	1,559,755	1,451,380	7.46%
December	1,543,309	1,397,882	10.40%
<b>Total</b>	<b>22,357,736</b>	<b>20,187,327</b>	<b>10.75%</b>

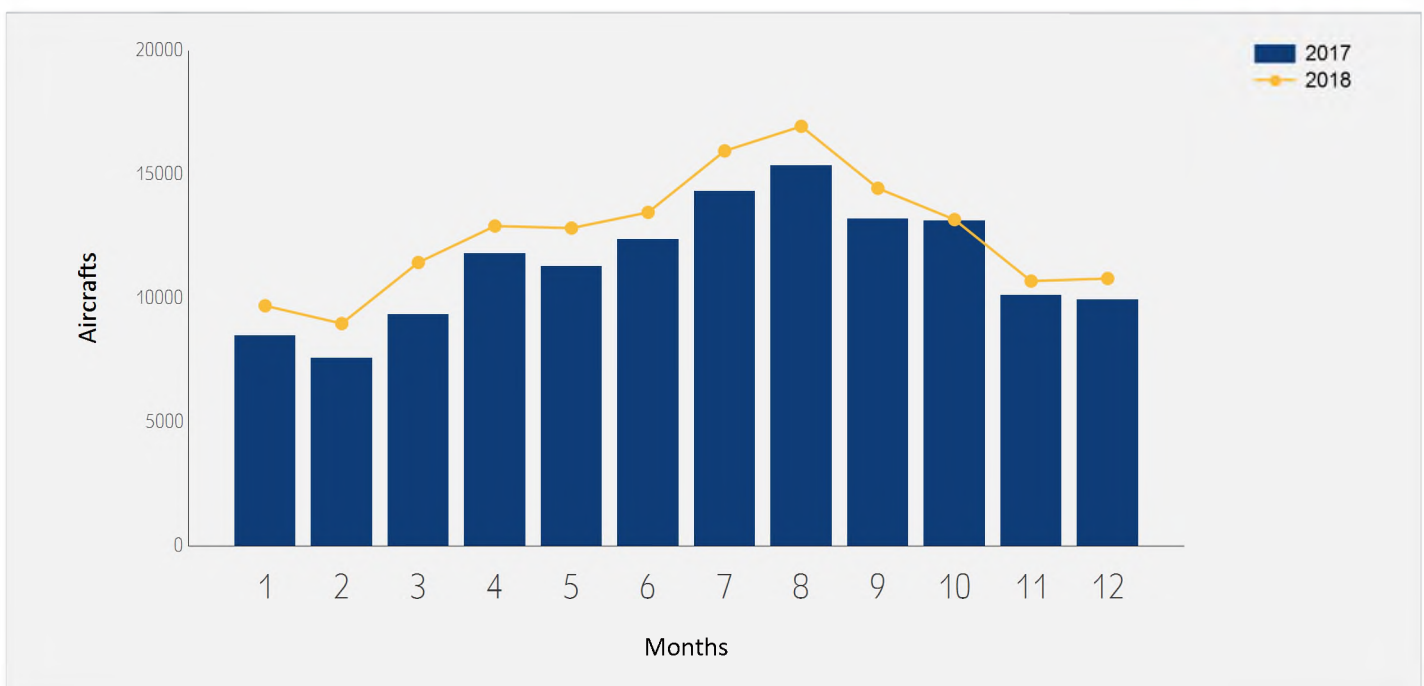




# International Aircraft Traffic

## Distribution by Months

Months	2018	2017	Rate of Change
January	9,695	8,488	14.22%
February	8,977	7,580	18.43%
March	11,442	9,337	22.54%
April	12,915	11,805	9.40%
May	12,831	11,283	13.71%
June	13,466	12,387	8.71%
July	15,949	14,324	11.34%
August	16,941	15,362	10.27%
September	14,439	13,201	9.37%
October	13,175	13,129	0.35%
November	10,692	10,117	5.68%
December	10,796	9,943	8.57%
<b>Total</b>	<b>151,318</b>	<b>136,956</b>	<b>10.48%</b>





# Int'l Accumulated Passenger Traffic

## Distribution by Airline

		Accumulated 2018		Accumulated 2017		
Airline		Passengers	Rate of Total	Passengers	Rate of Total	Rate of Change
LY	EL AL ISRAEL AIRLINES	5,634,892	25.20%	5,665,657	28.06%	-0.54%
TK	TURKISH AIRLINES	1,086,366	4.85%	1,018,721	5.04%	6.64%
W6	WIZZAIR	1,055,266	4.71%	699,846	3.46%	50.78%
EZY	EASYJET	1,014,987	4.53%	799,380	3.95%	26.97%
SU	AEROFLOT RUSSIAN AIRLINES	761,352	3.40%	804,832	3.98%	-5.40%
PS	UKRAINE INTL AIR	705,742	3.15%	606,631	3.00%	16.33%
IZ	ARKIA ISRAELI AIRLINES	686,213	3.06%	660,095	3.26%	3.95%
6H	ISRAIR AIRLINES	656,798	2.93%	729,387	3.61%	-9.95%
UA	UNITED AIRLINES	603,532	2.69%	541,213	2.68%	11.51%
LH	LUFTHANSA	602,062	2.69%	561,454	2.78%	7.23%
PC	PEGASUS AIRLINES	574,218	2.56%	572,059	2.83%	0.37%
FR	RYANAIR	517,797	2.31%	171,566	0.84%	201.80%
A3	AEGEAN AIRLINES	509,220	2.27%	474,629	2.35%	7.28%
AZ	ALITALIA	472,620	2.11%	409,454	2.02%	15.42%
BA	BRITISH AIRWAYS PLC	371,177	1.66%	325,537	1.61%	14.01%
QS	SMARTWINGS	322,568	1.44%	286,236	1.41%	12.69%
TO	TRANSAVIA FRANCE	315,036	1.40%	254,600	1.26%	23.73%
LX	SWISS INT'L AIRLINES	311,998	1.39%	303,613	1.50%	2.76%
AF	AIR FRANCE	311,194	1.39%	325,056	1.61%	-4.26%
LO	LOT POLISH AIRLINES	290,394	1.29%	192,864	0.95%	50.56%
OS	AUSTRIAN AIRLINES	247,238	1.10%	223,996	1.10%	10.37%





# Int'l Accumulated Passenger Traffic

## Distribution by Airline

		Accumulated 2018		Accumulated 2017		
Airline		Passengers	Rate of Total	Passengers	Rate of Total	Rate of Change
AC	AIR CANADA	214,169	0.95%	184,071	0.91%	16.35%
U6	URAL AIR	208,765	0.93%	88,258	0.43%	136.53%
SN	BRUSSELS AIRLINES	208,056	0.93%	198,301	0.98%	4.91%
DL	DELTA AIRLINES	198,898	0.88%	195,985	0.97%	1.48%
AEA	AIR EUROPA	198,615	0.88%	158,509	0.78%	25.30%
HV	TRANSAVIA	193,574	0.86%	158,267	0.78%	22.30%
BBG	BLUE BIRD AIRWAYS	183,040	0.81%	135,849	0.67%	34.73%
IB	IBERIA	182,490	0.81%	184,553	0.91%	-1.11%
ET	ETHIOPIAN AIRLINES	159,234	0.71%	140,665	0.69%	13.20%
RJ	ROYAL JORDANIAN	156,126	0.69%	142,360	0.70%	9.66%
ST	GERMANIA FLUGGESELLSCHAFT	152,542	0.68%	73,802	0.36%	106.69%
HU	HAINAN AIRLINES Co. Ltd	150,387	0.67%	104,126	0.51%	44.42%
VY	VUELING AIRLINES S.A.	150,040	0.67%	118,159	0.58%	26.98%
RO	TAROM - RUMANIAN AIR TRAN	142,517	0.63%	123,762	0.61%	15.15%
U8	TUS AIRWAYS	141,544	0.63%	84,432	0.41%	67.64%
CAI	CORENDON AIRLINES	139,251	0.62%	140,688	0.69%	-1.02%
CX	CATHAY PACIFIC AIRWAYS Lt	126,261	0.56%	80,422	0.39%	56.99%
KL	K.L.M.	124,628	0.55%	120,867	0.59%	3.11%
FV	ROSSIYA AIRLINES	115,469	0.51%	111,575	0.55%	3.49%
A9	GEORGIAN AIRWAYS	111,838	0.50%	71,202	0.35%	57.07%
BUC	BULGARIAN AIR CHARTER	109,971	0.49%	87,638	0.43%	25.48%





# Int'l Accumulated Passenger Traffic

## Distribution by Airline

		Accumulated 2018		Accumulated 2017		
Airline		Passengers	Rate of Total	Passengers	Rate of Total	Rate of Change
D8	NORWEGIAN AIR SHUTTLE	107,778	0.48%	65,166	0.32%	65.38%
8Q	ONUR AIR	103,408	0.46%	87,934	0.43%	17.59%
FB	BULGARIA AIR	100,546	0.44%	102,718	0.50%	-2.11%
KK	ATLAS GLOBAL	99,606	0.44%	55,061	0.27%	80.90%
OB	BLUE AIR TRANSPORT AERIAN	94,873	0.42%	100,830	0.49%	-5.90%
ENT	ENTER AIR	87,396	0.39%	96,520	0.47%	-9.45%
NO	NEOS	81,725	0.36%	88,286	0.43%	-7.43%
TWI	TAILWIND AIRLINES	78,130	0.34%	80,880	0.40%	-3.40%
CXI	CORENDON EUROPE	68,992	0.30%	54,826	0.27%	25.83%
XLF	XL AIRWAYS FRANCE	65,833	0.29%	32,900	0.16%	100.10%
B2	BELAVIA AIRLINE	62,808	0.28%	58,238	0.28%	7.84%
HY	UZBEKISTAN AIR	62,099	0.27%	54,357	0.26%	14.24%
AI	AIR INDIA	57,791	0.25%	132		
KE	KOREAN AIR	57,721	0.25%	57,065	0.28%	1.14%
CO	COBALT AIR	56,707	0.25%	49,673	0.24%	14.16%
DY	NORWEGIAN AIR SHUTTLE ASA	53,713	0.24%	41,476	0.20%	29.50%
BT	AIR BALTIC	47,978	0.21%	40,991	0.20%	17.04%
J2	AZERBAIJAN AIRLINES	44,820	0.20%	31,196	0.15%	43.67%
KM	AIR MALTA	43,807	0.19%	25,223	0.12%	73.67%
JU	AIR SERBIA	43,129	0.19%	47,566	0.23%	-9.32%
CY	CYPRUS AIRWAYS	42,762	0.19%	16,162	0.08%	164.58%







# Int'l Accumulated Passenger Traffic

## Distribution by Airline

		Accumulated 2018		Accumulated 2017		
Airline		Passengers	Rate of Total	Passengers	Rate of Total	Rate of Change
WW	WOW AIR	42,133	0.18%	15,020	0.07%	180.51%
AY	FINNAIR	40,921	0.18%	37,326	0.18%	9.63%
YE	YAN AIR	37,271	0.16%	26,344	0.13%	41.47%
4D	AIR SINAI	31,970	0.14%	29,344	0.14%	8.94%
FH	FREEBIRD AIRLINES	23,613	0.10%	41,920	0.20%	-43.67%
	OTHERS	302,121	1.35%	519,856	2.57%	-41.88%
TOTAL		22,357,736		20,187,327		10.75%





# Int'l Accumulated Passenger Traffic

## Distribution by Israeli Airlines

		Accumulated 2018		Accumulated 2017		
Airlines		Passengers	Rate of Total	Passengers	Rate of Total	Rate of Change
LY	EL AL ISRAEL AIRLINES	5,634,892	25.20%	5,665,657	28.06%	-0.54%
IZ	ARKIA ISRAELI AIRLINES	686,213	3.06%	660,095	3.26%	3.95%
6H	ISRAIR AIRLINES	656,798	2.93%	729,387	3.61%	-9.95%
	OTHERS	3,830	0.01%	4,153	0.02%	-7.77%
	<b>TOTAL</b>	<b>6,981,733</b>		<b>7,059,292</b>		<b>-1.09%</b>





# Int'l Accumulated Passenger Traffic

## Distribution by Countries

Countries	Accumulated 2018		Accumulated 2017		
	Passengers	Rate of Total	Passengers	Rate of Total	Rate of Change
TURKEY	2,113,036	9.45%	1,991,931	9.86%	6.07%
UNITED STATES	1,665,667	7.45%	1,540,498	7.63%	8.12%
GERMANY	1,431,540	6.40%	1,417,194	7.02%	1.01%
ITALY	1,431,148	6.40%	1,175,008	5.82%	21.79%
FRANCE	1,397,715	6.25%	1,240,757	6.14%	12.65%
GREECE	1,305,747	5.84%	1,149,177	5.69%	13.62%
RUSSIAN FEDERATION	1,280,603	5.72%	1,220,337	6.04%	4.93%
UNITED KINGDOM	1,228,902	5.49%	1,152,077	5.70%	6.66%
SPAIN	980,119	4.38%	897,489	4.44%	9.20%
UKRAINE	962,668	4.30%	843,325	4.17%	14.15%
POLAND	812,230	3.63%	599,632	2.97%	35.45%
ROMANIA	804,677	3.59%	694,077	3.43%	15.93%
SWITZERLAND	675,832	3.02%	680,082	3.36%	-0.62%
NETHERLANDS	629,844	2.81%	571,373	2.83%	10.23%
CYPRUS	573,973	2.56%	603,686	2.99%	-4.92%
BULGARIA	514,770	2.30%	430,598	2.13%	19.54%
HUNGARY	462,474	2.06%	387,342	1.91%	19.39%
CHINA	451,962	2.02%	352,791	1.74%	28.11%
AUSTRIA	419,978	1.87%	358,318	1.77%	17.20%
CZECH REPUBLIC	388,521	1.73%	439,918	2.17%	-11.68%
GEORGIA	362,823	1.62%	263,250	1.30%	37.82%
CANADA	299,837	1.34%	262,522	1.30%	14.21%





# Int'l Accumulated Passenger Traffic

## Distribution by Countries

Countries	Accumulated 2018		Accumulated 2017		
	Passengers	Rate of Total	Passengers	Rate of Total	Rate of Change
BELGIUM	289,215	1.29%	298,865	1.48%	-3.22%
THAILAND	222,889	0.99%	202,971	1.00%	9.81%
JORDAN	158,604	0.70%	144,380	0.71%	9.85%
ETHIOPIA	158,587	0.70%	140,414	0.69%	12.94%
INDIA	115,715	0.51%	58,475	0.28%	97.88%
SERBIA	96,449	0.43%	124,694	0.61%	-22.65%
AZERBAIJAN	86,127	0.38%	38,937	0.19%	121.19%
LATVIA	78,549	0.35%	74,699	0.37%	5.15%
PORTUGAL	75,897	0.33%	69,866	0.34%	8.63%
BELARUS	62,853	0.28%	63,074	0.31%	-0.35%
UZBEKISTAN	62,120	0.27%	54,295	0.26%	14.41%
LITHUANIA	59,506	0.26%	49,720	0.24%	19.68%
CROATIA	58,920	0.26%	50,120	0.24%	17.55%
SOUTH KOREA	57,730	0.25%	57,075	0.28%	1.14%
SOUTH AFRICA	56,056	0.25%	55,608	0.27%	0.80%
FINLAND	53,651	0.23%	48,824	0.24%	9.88%
DENMARK	51,122	0.22%	40,698	0.20%	25.61%
SWEDEN	50,931	0.22%	35,309	0.17%	44.24%
MALTA	47,683	0.21%	29,191	0.14%	63.34%
MONTENEGRO	46,307	0.20%	42,661	0.21%	8.54%
MOLDOVA	44,090	0.19%	19,016	0.09%	131.85%
ICELAND	42,608	0.19%	15,073	0.07%	182.67%





# Int'l Accumulated Passenger Traffic

## Distribution by Countries

Countries	Accumulated 2018		Accumulated 2017		Rate of Change
	Passengers	Rate of Total	Passengers	Rate of Total	
TANZANIA	38,625	0.17%	55,172	0.27%	-29.99%
EGYPT	35,772	0.15%	35,114	0.17%	1.87%
SLOVAKIA	27,752	0.12%	48,508	0.24%	-42.78%
SLOVENIA	18,930	0.08%	22,808	0.11%	-17.00%
ARMENIA	15,492	0.06%	8,964	0.04%	72.82%
NORWAY	14,945	0.06%	7,978	0.03%	87.32%
OTHERS	36,545	0.16%	23,436	0.11%	55.93%
<b>TOTAL</b>	<b>22,357,736</b>		<b>20,187,327</b>		<b>10.75%</b>





# Int'l Accumulated Passenger Traffic

## Distribution by First Destination

Destination	Accumulated 2018		Accumulated 2017		
	Passengers	Rate of Total	Passengers	Rate of Total	Rate of Change
ISTANBUL-ATATURK	1,071,531	4.79%	946,221	4.68%	13.24%
PARIS-CHARLES DE GAULLE	871,391	3.89%	855,718	4.23%	1.83%
ROME - FIUMICINO	815,891	3.64%	640,785	3.17%	27.32%
MOSCOW	761,621	3.40%	805,173	3.98%	-5.40%
KIEV,KYIV-BORISPOL	654,145	2.92%	563,171	2.78%	16.15%
LONDON - HEATHROW	648,747	2.90%	607,792	3.01%	6.73%
NEW YORK - NEWARK	644,151	2.88%	572,954	2.83%	12.42%
NEW YORK - J.F.KENNEDY	610,437	2.73%	661,256	3.27%	-7.68%
BUCHAREST - OTOPENI	593,846	2.65%	574,895	2.84%	3.29%
AMSTERDAM	585,108	2.61%	567,151	2.80%	3.16%
MADRID	517,492	2.31%	440,841	2.18%	17.38%
FRANKFURT	498,312	2.22%	515,807	2.55%	-3.39%
ANTALYA	490,896	2.19%	506,364	2.50%	-3.05%
LUTON	473,104	2.11%	418,907	2.07%	12.93%
ISTANBUL-SABIHA GOKCHEN	467,712	2.09%	453,819	2.24%	3.06%
WARSAW	456,251	2.04%	395,185	1.95%	15.45%
ZURICH	451,444	2.01%	455,028	2.25%	-0.78%
ELEFThERIOS VENIZELOS	440,492	1.97%	364,093	1.80%	20.98%
BUDAPEST	431,444	1.92%	363,492	1.80%	18.69%
LARNACA	424,527	1.89%	508,765	2.52%	-16.55%
BARCELONA	414,432	1.85%	411,268	2.03%	0.76%
VIENNA	412,095	1.84%	347,547	1.72%	18.57%





# Int'l Accumulated Passenger Traffic

## Distribution by First Destination

Destination	Accumulated 2018		Accumulated 2017		
	Passengers	Rate of Total	Passengers	Rate of Total	Rate of Change
PRAGUE-RUZYNE	388,367	1.73%	437,099	2.16%	-11.14%
MUNICH	356,948	1.59%	347,529	1.72%	2.71%
BRUSSELS	287,614	1.28%	295,532	1.46%	-2.67%
BERLIN -SCHOENEFELD	286,524	1.28%	293,171	1.45%	-2.26%
RHODES-PARADISI	286,291	1.28%	252,371	1.25%	13.44%
MILAN-MALPENSA	276,151	1.23%	278,700	1.38%	-0.91%
PARIS-ORLY	269,901	1.20%	221,290	1.09%	21.96%
HERAKLION	269,068	1.20%	304,617	1.50%	-11.67%
SOFIA	249,960	1.11%	192,098	0.95%	30.12%
HONG KONG INT'L	244,977	1.09%	199,590	0.98%	22.74%
TORONTO	244,537	1.09%	227,553	1.12%	7.46%
BANGKOK INTL.-SUARNABHUM	222,889	0.99%	202,943	1.00%	9.82%
TBILISI	204,256	0.91%	163,903	0.81%	24.62%
SAN FRANCISCO	178,669	0.79%	138,337	0.68%	29.15%
ADDIS ABABA	158,587	0.70%	140,414	0.69%	12.94%
BATUMI	158,561	0.70%	99,055	0.49%	60.07%
AMMAN (QUEEN ALIA INT'L)	157,458	0.70%	142,998	0.70%	10.11%
MOSCOW-DOMODEDOVO	153,364	0.68%	209,729	1.03%	-26.87%
ODESSA	153,186	0.68%	122,845	0.60%	24.69%
PAPHOS	149,446	0.66%	94,921	0.47%	57.44%
BERLIN TEGEL	148,015	0.66%	175,073	0.86%	-15.45%
ST. PETERSBURG	147,779	0.66%	110,452	0.54%	33.79%





# Int'l Accumulated Passenger Traffic

## Distribution by First Destination

Destination	Accumulated 2018		Accumulated 2017		
	Passengers	Rate of Total	Passengers	Rate of Total	Rate of Change
BURGAS	147,460	0.65%	134,777	0.66%	9.41%
GENEVA	146,318	0.65%	143,922	0.71%	1.66%
THESSALONIKI	124,897	0.55%	56,068	0.27%	122.75%
BEIJING	122,795	0.54%	134,250	0.66%	-8.53%
VARNA	111,829	0.50%	99,500	0.49%	12.39%
LOS ANGELES	100,642	0.45%	100,714	0.49%	-0.07%
BELGRADE	96,449	0.43%	124,694	0.61%	-22.65%
BAKU HEYDAR ALIYEV INT'L	86,117	0.38%	38,915	0.19%	121.29%
BERGAMO	85,013	0.38%	29,516	0.14%	188.02%
KRAKOW	82,872	0.37%	37,322	0.18%	122.04%
LYON - SATOLAS	82,225	0.36%	34,241	0.16%	140.13%
MOSCOW-ZHUKOVSKY INTL AIR	81,736	0.36%	22,837	0.11%	257.91%
VENICE	80,602	0.36%	59,402	0.29%	35.68%
RIGA	78,549	0.35%	74,699	0.37%	5.15%
BASEL	77,997	0.34%	81,053	0.40%	-3.77%
KATOWICE	75,597	0.33%	79,103	0.39%	-4.43%
MIAMI INTERNATIONAL	74,384	0.33%	12,742	0.06%	483.77%
VILLAFRANCA-VERONA	69,512	0.31%	70,786	0.35%	-1.79%
KOS	68,142	0.30%	73,585	0.36%	-7.39%
NICE	67,622	0.30%	39,867	0.19%	69.61%
CLUJ NAPOCA	66,070	0.29%	46,533	0.23%	41.98%
IASI	63,430	0.28%	48,260	0.23%	31.43%







# Int'l Accumulated Passenger Traffic

## Distribution by First Destination

Destination	Accumulated 2018		Accumulated 2017		
	Passengers	Rate of Total	Passengers	Rate of Total	Rate of Change
MINSK	62,850	0.28%	63,074	0.31%	-0.35%
MARSEILLE	62,514	0.27%	67,611	0.33%	-7.53%
TASHKENT	62,120	0.27%	54,295	0.26%	14.41%
WROCLAW	61,463	0.27%	21,153	0.10%	190.56%
SOCHI	60,347	0.26%	14,836	0.07%	306.76%
LISBON	58,633	0.26%	58,337	0.28%	0.50%
DELHI	57,886	0.25%	72		
INCHEON INTL AIRPORT	57,721	0.25%	57,065	0.28%	1.14%
MUMBAI	57,668	0.25%	58,398	0.28%	-1.25%
SHANGHAI PUDONG	57,080	0.25%	18,937	0.09%	201.42%
BOSTON-LOGAN INT	56,216	0.25%	53,503	0.26%	5.07%
JOHANNESBURG	56,043	0.25%	55,589	0.27%	0.81%
MONTREAL - DORVAL	54,882	0.24%	34,466	0.17%	59.23%
VILNIUS INTL	53,731	0.24%	43,386	0.21%	23.84%
DUSSELDORF	53,009	0.23%	44,595	0.22%	18.86%
COPENHAGEN KASTRUP	51,118	0.22%	40,698	0.20%	25.60%
STOCKHOLM-ARLANDA	49,983	0.22%	33,073	0.16%	51.12%
DALAMAN	48,443	0.21%	50,376	0.24%	-3.83%
MALTA	47,683	0.21%	29,191	0.14%	63.34%
KHARKOV	47,180	0.21%	42,606	0.21%	10.73%
EINDHOVEN	44,506	0.19%	4,222	0.02%	954.14%
NAPLES-CAPODICHINO	44,429	0.19%	38,049	0.18%	16.76%





# Int'l Accumulated Passenger Traffic

## Distribution by First Destination

Destination	Accumulated 2018		Accumulated 2017		Rate of Change
	Passengers	Rate of Total	Passengers	Rate of Total	
CHISINAU	44,090	0.19%	19,016	0.09%	131.85%
POZNAN	42,991	0.19%	13,235	0.06%	224.82%
HELSINKI	42,886	0.19%	37,327	0.18%	14.89%
REYKJAVIK	42,608	0.19%	15,073	0.07%	182.67%
GDANSK	40,678	0.18%	14,921	0.07%	172.62%
TIVAT	40,261	0.18%	25,605	0.12%	57.23%
MANCHESTER	38,368	0.17%	70,764	0.35%	-45.78%
TIMISOARA	36,861	0.16%	4,659	0.02%	691.17%
BADEN BADEN	36,555	0.16%	7,210	0.03%	407.00%
ZAGREB	36,259	0.16%	33,499	0.16%	8.23%
CATANIA FONTANAROSSA	35,385	0.15%	31,496	0.15%	12.34%
BODRUM	34,203	0.15%	34,600	0.17%	-1.14%
LONDON - GATWICK	33,939	0.15%	34,184	0.16%	-0.71%
ZANZIBAR	33,714	0.15%	49,429	0.24%	-31.79%
OTHERS	895,551	4.00%	743,521	3.68%	20.44%
<b>TOTAL</b>	<b>22,357,736</b>		<b>20,187,327</b>		<b>10.75%</b>



# Cargo Activity





# Cargo Handling

## Distribution by Transporter

Transporter	2018 (Ton)	2017 (Ton)	Rate of Change
Cargo on Passenger Aircraft - Incoming	103,099	86,739	18.86%
Cargo on Passenger Aircraft - Outgoing	80,547	76,928	4.70%
<b>Total Cargo on Passenger Aircraft</b>	<b>183,646</b>	<b>163,668</b>	<b>12.20%</b>
Cargo on Cargo Aircraft - Incoming	97,844	105,902	-7.60%
Cargo on Cargo Aircraft - Outgoing	68,187	71,381	-4.47%
<b>Total Cargo on Cargo Aircraft</b>	<b>166,031</b>	<b>177,282</b>	<b>-6.34%</b>
<b>Total</b>	<b>349,677</b>	<b>340,950</b>	<b>2.55%</b>

## Distribution by Months

Month	2018 (Ton)	2017 (Ton)	Rate of Change
January	27,987	26,434	5.87%
February	27,277	25,662	6.29%
March	32,910	31,513	4.43%
April	27,165	27,824	-2.36%
May	30,350	28,958	4.80%
June	28,261	26,545	6.46%
July	30,133	27,415	9.91%
August	29,621	29,141	1.64%
September	25,317	27,411	-7.63%
October	28,597	27,592	3.64%
November	29,966	30,217	-0.83%
December	32,093	32,238	-0.44%
<b>Total</b>	<b>349,677</b>	<b>340,950</b>	<b>2.55%</b>





# Accumulated Cargo Handling on Passengers Aircrafts

## Distribution by Airline

		Accumulated 2018				Accumulated 2017				
Airline		Incoming Cargo (Ton)	Outgoing Cargo (Ton)	Cargo (Ton)	Rate of Total	Incoming Cargo (Ton)	Outgoing Cargo (Ton)	Cargo (Ton)	Rate of Total	Rate of Change
LY	EL AL ISRAEL AIRLINES	33,081	34,827	67,908	36.97%	29,442	32,725	62,167	37.98%	9.23%
UA	UNITED AIRLINES	8,556	11,681	20,237	11.01%	7,033	11,349	18,382	11.23%	10.09%
TK	TURKISH AIRLINES	12,784	2,715	15,499	8.43%	9,880	2,544	12,424	7.59%	24.75%
LX	SWISS INT'L AIRLINES	8,878	4,976	13,854	7.54%	8,281	5,587	13,867	8.47%	-0.09%
SU	AEROFLOT RUSSIAN AIRLINES	7,842	3,367	11,210	6.10%	7,220	3,334	10,554	6.44%	6.21%
BA	BRITISH AIRWAYS PLC	4,689	3,195	7,885	4.29%	5,000	3,550	8,550	5.22%	-7.77%
AC	AIR CANADA	4,149	3,724	7,873	4.28%	3,243	3,135	6,378	3.89%	23.43%
HU	HAINAN AIRLINES Co. Ltd	4,096	2,709	6,805	3.70%	2,498	2,215	4,714	2.88%	44.35%
CX	CATHAY PACIFIC AIRWAYS Lt	2,719	2,757	5,476	2.98%	1,795	1,628	3,423	2.09%	59.97%
AE A	AIR EUROPA	2,688	915	3,603	1.96%	608	560	1,168	0.71%	208.47%
DL	DELTA AIRLINES	1,906	1,600	3,506	1.90%	2,561	3,190	5,752	3.51%	-39.04%
IB	IBERIA	2,065	1,111	3,177	1.72%	1,301	1,190	2,491	1.52%	27.53%
AI	AIR INDIA	813	1,086	1,899	1.03%					
KE	KOREAN AIR	969	812	1,781	0.96%	1,105	906	2,011	1.22%	-11.43%
PC	PEGASUS AIRLINES	1,058	667	1,725	0.93%	821	735	1,555	0.95%	10.93%
LH	LUFTHANSA	1,042	666	1,708	0.93%	1,200	928	2,128	1.30%	-19.73%
RJ	ROYAL JORDANIAN	930	515	1,445	0.78%	895	273	1,168	0.71%	23.71%
PS	UKRAINE INTL AIR	503	756	1,258	0.68%	338	494	832	0.50%	51.20%
HY	UZBEKISTAN AIR	276	505	781	0.42%	338	585	923	0.56%	-15.38%
SN	BRUSSELS AIRLINES	563	88	651	0.35%	656	216	873	0.53%	-25.42%
ET	ETHIOPIAN AIRLINES	246	236	482	0.26%	147	228	375	0.22%	28.53%
QS	SMARTWINGS	333	124	457	0.24%	332	183	515	0.31%	-11.26%





# Accumulated Cargo Handling on Passengers Aircrafts

## Distribution by Airline

		Accumulated 2018				Accumulated 2017				
Airline		Incoming Cargo (Ton)	Outgoing Cargo (Ton)	Cargo (Ton)	Rate of Total	Incoming Cargo (Ton)	Outgoing Cargo (Ton)	Cargo (Ton)	Rate of Total	Rate of Change
KK	ATLAS GLOBAL	427	12	439	0.23%	44	1	45	0.02%	875.55%
LO	LOT POLISH AIRLINES	292	92	383	0.20%	169	45	215	0.13%	78.13%
RO	TAROM - RUMANIAN AIR TRAN	192	163	354	0.19%	161	153	314	0.19%	12.73%
3U	SICHUAN AIRLINES	297	40	337	0.18%					
OS	AUSTRIAN AIRLINES	212	124	336	0.18%	350	130	479	0.29%	-29.85%
IZ	ARKIA ISRAELI AIRLINES	158	165	323	0.17%	1	22	23	0.01%	
AF	AIR FRANCE	117	153	270	0.14%	194	178	372	0.22%	-27.41%
A3	AEGEAN AIRLINES	145	77	222	0.12%	135	72	207	0.12%	7.24%
BT	AIR BALTIC	129	85	214	0.11%	82	58	140	0.08%	52.85%
AZ	ALITALIA	176	23	199	0.10%	144	34	178	0.10%	11.79%
	OTHERS	766	583	1,349	0.73%	767	679	1,446	0.88%	-6.70%
	<b>TOTAL</b>	<b>103,099</b>	<b>80,547</b>	<b>183,646</b>		<b>86,740</b>	<b>76,927</b>	<b>163,667</b>		<b>12.20%</b>





# Accumulated Cargo Handling on Cargo Aircrafts

## Distribution by Airline

		Accumulated 2018				Accumulated 2017				
Airline		Incoming Cargo Ton)	Outgoing Cargo Ton)	Cargo Ton)	Rate of Total	Incoming Cargo Ton)	Outgoing Cargo Ton)	Cargo Ton)	Rate of Total	Rate of Change
ICL	C.A.L ISRAELI CARGO	33,003	25,670	58,673	35.33%	33,987	22,935	56,922	32.10%	3.07%
LY	EL AL ISRAEL AIRLINES	18,066	9,666	27,731	16.70%	26,090	14,041	40,130	22.63%	-30.89%
MNB	MNG CARGO AIRLINES	10,963	4,159	15,123	9.10%	11,291	4,925	16,216	9.14%	-6.74%
AZG	SILK WAY WEST AIRLINES	6,298	7,113	13,411	8.07%	6,601	8,040	14,640	8.25%	-8.39%
BCS	EUROPEAN AIR TRANSPORT	7,450	5,830	13,280	7.99%	6,969	5,552	12,521	7.06%	6.06%
LH	LUFTHANSA	7,090	4,636	11,726	7.06%	7,805	4,695	12,500	7.05%	-6.19%
TK	TURKISH AIRLINES	5,313	3,812	9,125	5.49%	4,789	3,614	8,403	4.73%	8.59%
FX	FEDERAL EXPRESS	4,561	4,182	8,743	5.26%	4,258	4,497	8,756	4.93%	-0.14%
3V	ASL Airlines Belgium	2,886	1,715	4,601	2.77%	2,835	1,797	4,631	2.61%	-0.64%
P3	CARGOLOGICAIR	1,289	648	1,937	1.16%	322	155	477	0.26%	306.07%
KE	KOREAN AIR	606	449	1,055	0.63%	358	385	743	0.41%	41.99%
	OTHERS	318	308	627	0.37%	598	745	1,343	0.75%	-53.31%
	<b>TOTAL</b>	<b>97,845</b>	<b>68,187</b>	<b>166,031</b>		<b>105,902</b>	<b>71,380</b>	<b>177,283</b>		<b>-6.34%</b>





# Accumulated Cargo Handling on Cargo Aircrafts

## Distribution by Countries

Countries	Accumulated 2018				Accumulated 2017				
	Incoming Cargo (Ton)	Outgoing Cargo (Ton)	Cargo (Ton)	Rate of Total	Incoming Cargo (Ton)	Outgoing Cargo (Ton)	Cargo (Ton)	Rate of Total	Rate of Change
BELGIUM	41,508	34,711	76,220	45.90%	51,579	36,610	88,189	49.74%	-13.57%
GERMANY	25,944	9,636	35,580	21.42%	24,738	6,457	31,195	17.59%	14.05%
TURKEY	9,944	12,190	22,134	13.33%	10,003	12,157	22,160	12.49%	-0.11%
AZERBAIJAN	6,298	7,151	13,449	8.10%	6,601	8,081	14,682	8.28%	-8.39%
CYPRUS	6,756	88	6,844	4.12%	7,579	40	7,619	4.29%	-10.17%
NORWAY	4,870		4,870	2.93%	3,111		3,111	1.75%	56.54%
FRANCE	1,147	1,135	2,282	1.37%	1,133	1,037	2,170	1.22%	5.16%
AUSTRIA	19	1,501	1,520	0.91%	31	1,431	1,463	0.82%	3.89%
SWITZERLAND	812		812	0.48%	355	104	459	0.25%	76.90%
SOUTH KOREA		449	449	0.27%	272	203	475	0.26%	-5.47%
ITALY	76	317	393	0.23%	108	4,198	4,306	2.42%	-90.87%
MALTA	1	356	356	0.21%	1	72	73	0.04%	387.67%
ZAMBIA		222	222	0.13%		24	24	0.01%	825.00%
SPAIN	178		178	0.10%	14		14		
OTHERS	293	431	723	0.43%	377	966	1,343	0.75%	-46.16%
<b>TOTAL</b>	<b>97,845</b>	<b>68,187</b>	<b>166,031</b>		<b>105,902</b>	<b>71,380</b>	<b>177,283</b>		<b>-6.34%</b>





# Domestic Activity

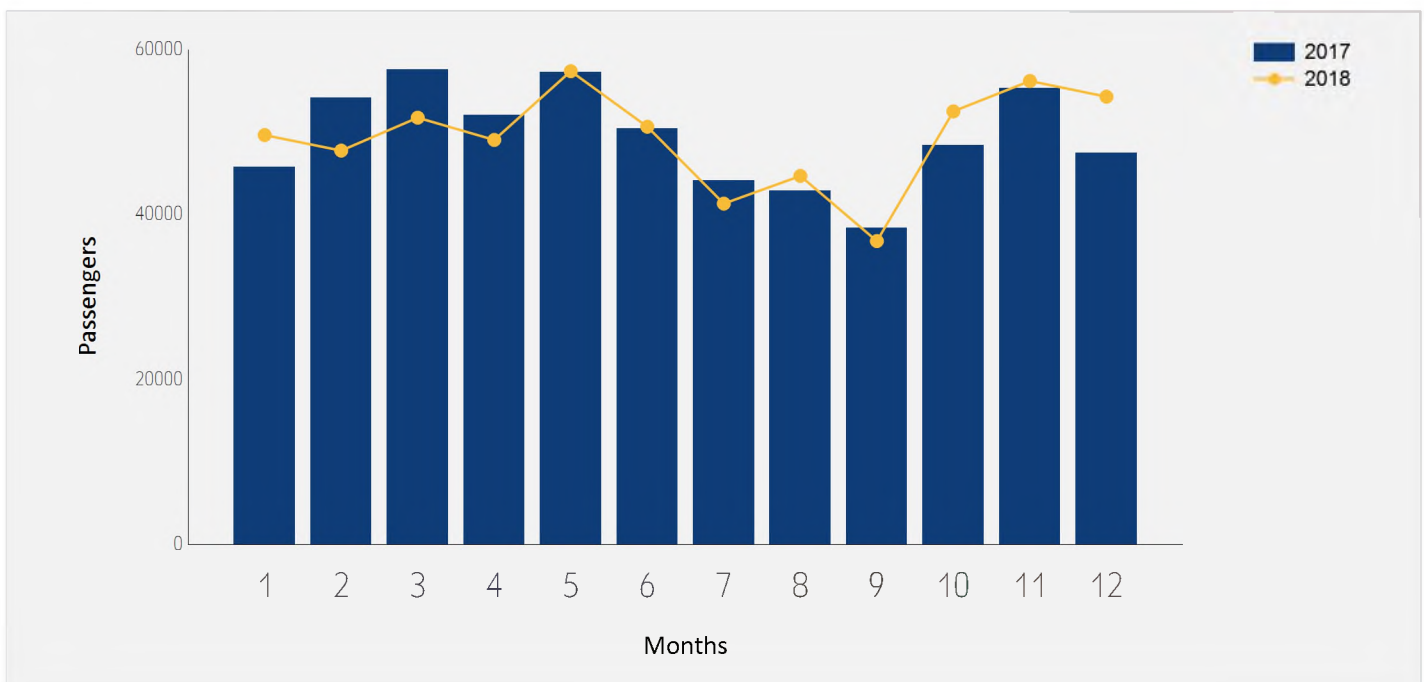




# Domestic Passenger Traffic

## Distribution by Months

Month	2018	2017	Rate of Change
January	49,632	45,737	8.51%
February	47,747	54,183	-11.87%
March	51,742	57,570	-10.12%
April	49,042	52,089	-5.84%
May	57,377	57,279	0.17%
June	50,645	50,394	0.49%
July	41,318	44,129	-6.36%
August	44,675	42,873	4.20%
September	36,776	38,385	-4.19%
October	52,511	48,368	8.56%
November	56,192	55,279	1.65%
December	54,283	47,439	14.42%
<b>Total</b>	<b>591,940</b>	<b>593,725</b>	<b>-0.30%</b>

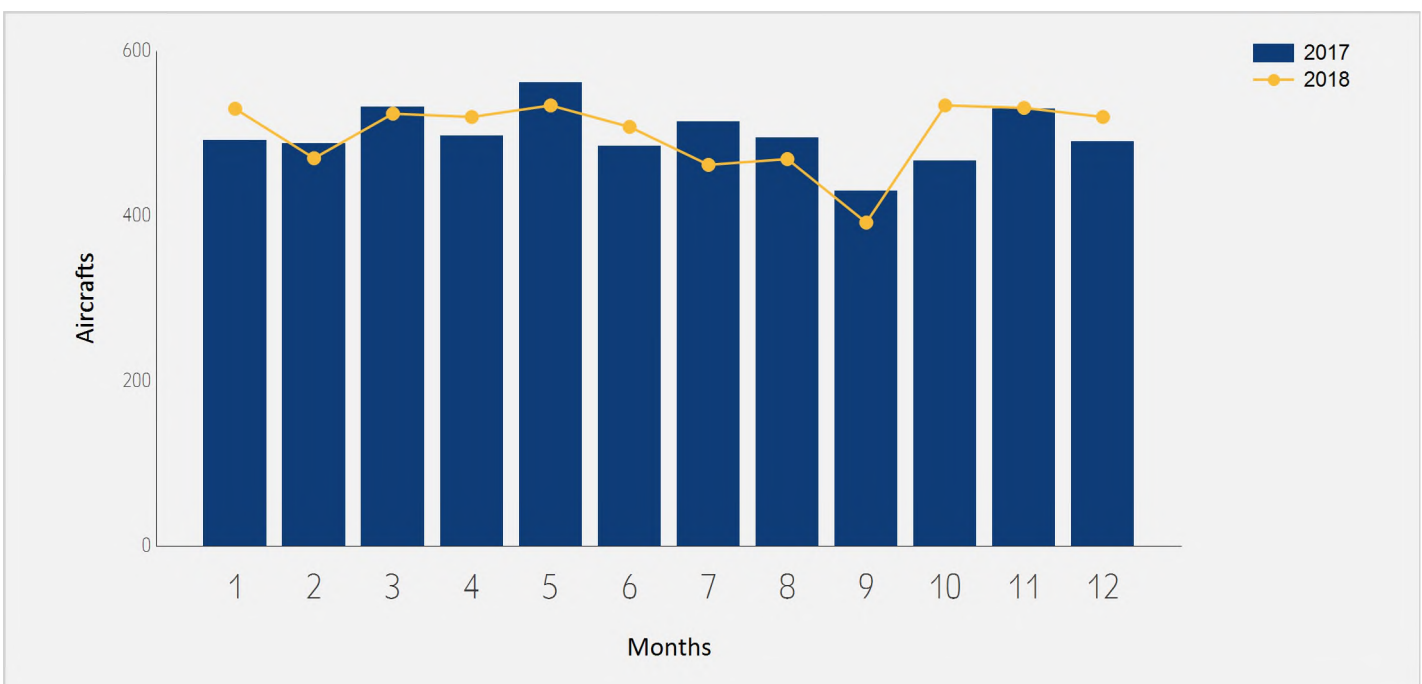




# Domestic Aircrafts Traffic

## Distribution by Months

Month	2018	2017	Rate of Change
January	530	492	7.72%
February	470	488	-3.68%
March	524	532	-1.50%
April	520	497	4.62%
May	534	562	-4.98%
June	508	485	4.74%
July	462	514	-10.11%
August	469	495	-5.25%
September	392	430	-8.83%
October	534	467	14.34%
November	531	530	0.18%
December	520	490	6.12%
<b>Total</b>	<b>5,994</b>	<b>5,982</b>	<b>0.20%</b>





# Accumulated Domestic Passengers Traffic

## Distribution by Airlines

		Accumulated 2018		Accumulated 2017		
Airline		Passengers	Rate of Total	Passengers	Rate of Total	Rate of Change
IZ	ARKIA ISRAELI AIRLINES	395,871	66.87%	419,150	70.59%	-5.55%
6H	ISR AIR AIRLINES	192,650	32.54%	171,516	28.88%	12.32%
LY	EL AL ISRAEL AIRLINES	2,078	0.35%	1,664	0.28%	24.87%
	OTHERS	1,341	0.22%	1,395	0.23%	-3.87%
	<b>TOTAL</b>	<b>591,940</b>		<b>593,725</b>		<b>-0.30%</b>

## Distribution by Destinations

		Accumulated 2018		Accumulated 2017		
Destination		Passengers	Rate of Total	Passengers	Rate of Total	Rate of Change
	EILAT-J.HOZMAN	576,800	97.44%	580,202	97.72%	-0.58%
	OTHERS	15,140	2.55%	13,523	2.27%	11.95%
	<b>TOTAL</b>	<b>591,940</b>		<b>593,725</b>		<b>-0.30%</b>

