

# Monthly Report

Ben Gurion International Airport

April 2021



# Israel Airport Authority

## Ben Gurion International Airport

### Produced by the Industry & Management Department

**This report is protected by copyright and is the exclusive property of the Israel Airports Authority.**

**It must be emphasized that the data in the report are based on the reports of the airlines, and received under their responsibility.**

**The information is intended for personal use, and therefore may not be quoted or passed on to any third party without written permission from the Israel Airports Authority.**

**In addition, no commercial use may be made of this report.**

#### **Edit Yehoshua**

Activity Coordinator

Tel. +972-3-9752017

Email: [edity@iaa.gov.il](mailto:edity@iaa.gov.il)

#### **Rachel Lehava**

Manager, Industrial & Management Dep.

Tel. +972-3-9752019

Email: [rachelle@iaa.gov.il](mailto:rachelle@iaa.gov.il)

#### **Yossi Tzemach**

Head, Industrial & Management Dep.

Tel. +972-3-9752020

Email: [yossiz@iaa.gov.il](mailto:yossiz@iaa.gov.il)



Dear friends and partners,

I hereby respectfully submit for your review a report summarizing the aviation activity at Ben - Gurion International Airport in April 2021.

April is a turning point in the map of destinations, the number of operating airlines, in passenger and aircraft traffic and symbolizes the beginning of recovery.

During the month, a total of 325,265 passengers on 4,516 international and domestic flights passed through Ben- Gurion Airport.

International passenger traffic in April totaled 271,849 passengers.

On domestic flights 53,416 passengers passed through Ben- Gurion Airport this month.

Israeli airlines carried 107,999 passengers in this month, 39.72% of all travelers passing through Ben - Gurion Airport.

The airlines which contributed the most to the increase of passenger traffic this month are: EL AL ISRAEL AIRLINES, UNITED AIRLINES, TURKISH AIRLINES and ISRAIR AIRLINES .

The Destination with the highest volume of activity was NEW YORK - NEWARK with a total of 25,771 passengers to and From.

The country with the highest volume of activity was the UNITED STATES, with 57,604 passengers, constituting 21.18% of all activity.

Of the leading countries, the highest growth relative to last April was recorded in passenger traffic to UNITED STATES, TURKEY and UNITED ARAB EMIRATES.

Cargo transportation this month stood at 29,521 tons and reflects an increase of 41.99% compared to April 2020. 6,683 tons were transported in passenger aircraft and 22,838 tons in cargo aircraft.

Below you will find additional tables providing details about movements of aircraft, passengers and cargo at Ben - Gurion International Airport.

Sincerely yours,  
**Shmuel Zakay**  
Managing Director,  
Ben-Gurion International Airport



# Content



## Aviation Activity

Aviation Activity Summary	1
International Activity Summary	2 - 4
Domestic Activity Summary	5



## International Activity

Distribution By Months	7 - 8
Distribution By Airlines	9 - 15
Distribution By Countries	16 - 21
Distribution By First Destination	22 - 29



## Cargo Activity

Distribution by Transporter	31
Distribution By Months	31
Distribution By Airlines	32 - 36
Distribution By Countries	37 - 39



## Domestic Activity

Distribution By Months	41 - 42
Distribution By Airlines	43
Distribution By Destinations	44





# Passengers and Aircrafts

## Aviation Activity at Ben Gurion International Airport

### International Activity

	Current Month			Accumulated Since the beginning of the year		
	April 2021	April 2020	Rate Of Change	2021	2020	Rate Of Change
Incoming Aircrafts	1,890	605		5,333	13,917	-61.67%
Outgoing Aircrafts	1,869	620		5,291	13,927	-62.00%
<b>Total Aircrafts</b>	<b>3,759</b>	<b>1,225</b>		<b>10,624</b>	<b>27,844</b>	<b>-61.84%</b>
Incoming Passengers	150,639	5,422		262,250	1,739,054	-84.91%
Outgoing Passengers	121,210	3,955		254,916	1,718,060	-85.16%
Transit Passengers	40	10		45	1,981	-97.72%
<b>Total Passengers</b>	<b>271,849</b>	<b>9,377</b>		<b>517,166</b>	<b>3,457,114</b>	<b>-85.04%</b>

### Domestic Activity

	Current Month			Accumulated Since the beginning of the year		
	April 2021	April 2020	Rate Of Change	2021	2020	Rate Of Change
Aircrafts	757	141		1,956	2,592	-24.53%
Passengers	53,416	1,412		109,910	185,404	-40.71%

### International and Domestic Activity Summary

	Current Month			Accumulated Since the beginning of the year		
	April 2021	April 2020	Rate Of Change	2021	2020	Rate Of Change
Aircrafts	4,516	1,366		12,580	30,436	-58.66%
Passengers	325,265	10,789		627,076	3,642,518	-82.78%





# Passengers and Aircrafts

## Int'l Aviation Activity at Ben Gurion International Airport by Terminal

### Terminal 3

	Current Month			Accumulated Since the beginning of the year		
	April 2021	April 2020	Rate of Change	2021	2020	Rate of Change
Incoming Aircrafts	1,890	605		5,333	13,917	-61.67%
Outgoing Aircrafts	1,869	620		5,132	11,824	-56.59%
<b>Total Aircrafts</b>	<b>3,759</b>	<b>1,225</b>		<b>10,465</b>	<b>25,741</b>	<b>-59.34%</b>
Incoming Passengers	150,639	5,422		262,250	1,739,054	-84.91%
Outgoing Passengers	121,210	3,955		244,949	1,421,624	-82.76%
Transit Passengers	40	10		45	1,981	-97.72%
<b>Total Passengers</b>	<b>271,849</b>	<b>9,377</b>		<b>507,199</b>	<b>3,160,678</b>	<b>-83.95%</b>

### Terminal 1

	Current Month			Accumulated Since the beginning of the year		
	April 2021	April 2020	Rate of Change	2021	2020	Rate of Change
Incoming Aircrafts						
Outgoing Aircrafts				159	2,103	-92.43%
<b>Total Aircrafts</b>				<b>159</b>	<b>2,103</b>	<b>-92.43%</b>
Incoming Passengers						
Outgoing Passengers				9,967	296,436	-96.63%
<b>Total Passengers</b>				<b>9,967</b>	<b>296,436</b>	<b>-96.63%</b>





# Passengers and Aircrafts

## Int'l Aviation Activity at Ben Gurion International Airport by Flight Type

### Schedule and Charter Flights

	Current Month			Accumulated Since the beginning of the year		
	April 2021	April 2020	Rate of Change	2021	2020	Rate of Change
Incoming Aircrafts	1,133	97		2,291	12,156	-81.15%
Outgoing Aircrafts	1,138	134		2,314	12,172	-80.98%
<b>Total Aircrafts</b>	<b>2,271</b>	<b>231</b>		<b>4,605</b>	<b>24,328</b>	<b>-81.07%</b>
Incoming Passengers	149,075	5,279		257,877	1,736,305	-85.14%
Outgoing Passengers	120,034	3,810		250,833	1,715,505	-85.37%
Transit Passengers	37	10		42	1,981	-97.87%
<b>Total Passengers</b>	<b>269,109</b>	<b>9,089</b>		<b>508,710</b>	<b>3,451,810</b>	<b>-85.26%</b>

### Private Flights

	Current Month			Accumulated Since the beginning of the year		
	April 2021	April 2020	Rate of Change	2021	2020	Rate of Change
Incoming Aircrafts	353	85		1,178	599	96.66%
Outgoing Aircrafts	334	85		1,144	607	88.46%
<b>Total Aircrafts</b>	<b>687</b>	<b>170</b>		<b>2,322</b>	<b>1,206</b>	<b>92.53%</b>
Incoming Passengers	1,246	127		3,651	1,610	126.77%
Outgoing Passengers	968	132		3,377	1,514	123.05%
<b>Total Passengers</b>	<b>2,214</b>	<b>259</b>		<b>7,028</b>	<b>3,124</b>	<b>124.96%</b>





# Passengers and Aircrafts

Int'l Aviation Activity at Ben Gurion International Airport by Flight Type

## Cargo Flights

	Current Month			Accumulated Since the beginning of the year		
	April 2021	April 2020	Rate of Change	2021	2020	Rate of Change
Incoming Aircrafts	376	420	-10.47%	1,750	1,065	64.31%
Outgoing Aircrafts	372	397	-6.29%	1,731	1,042	66.12%
<b>Total Aircrafts</b>	<b>748</b>	<b>817</b>	<b>-8.44%</b>	<b>3,481</b>	<b>2,107</b>	<b>65.21%</b>
Incoming Passengers	9	16	-43.75%	37	155	-76.12%
Outgoing Passengers	26	12	116.66%	96	157	-38.85%
<b>Total Passengers</b>	<b>35</b>	<b>28</b>	<b>25.00%</b>	<b>133</b>	<b>312</b>	<b>-57.37%</b>

## Other Flights

	Current Month			Accumulated Since the beginning of the year		
	April 2021	April 2020	Rate of Change	2021	2020	Rate of Change
Incoming Aircrafts	28	3		114	97	17.52%
Outgoing Aircrafts	25	4		102	106	-3.77%
<b>Total Aircrafts</b>	<b>53</b>	<b>7</b>		<b>216</b>	<b>203</b>	<b>6.40%</b>
Incoming Passengers	309			685	984	-30.38%
Outgoing Passengers	182	1		610	884	-30.99%
<b>Total Passengers</b>	<b>491</b>	<b>1</b>		<b>1,295</b>	<b>1,868</b>	<b>-30.67%</b>







# Passengers and Aircrafts

## Domestic Aviation Activity at Ben Gurion International Airport by Flight Type

### Schedule Flights

	Current Month			Accumulated Since the beginning of the year		
	April 2021	April 2020	Rate of Change	2021	2020	Rate of Change
Aircrafts	620	70		1,417	2,181	-35.02%
Passengers	53,092	1,412		109,351	185,279	-40.98%

### Private Flights

	Current Month			Accumulated Since the beginning of the year		
	April 2021	April 2020	Rate of Change	2021	2020	Rate of Change
Aircrafts	67	27	148.14%	305	144	111.80%
Passengers	88			231	114	102.63%

### Other Flights

	Current Month			Accumulated Since the beginning of the year		
	April 2021	April 2020	Rate of Change	2021	2020	Rate of Change
Aircrafts	70	44	59.09%	234	267	-12.35%
Passengers	236			328	11	





# International Activity

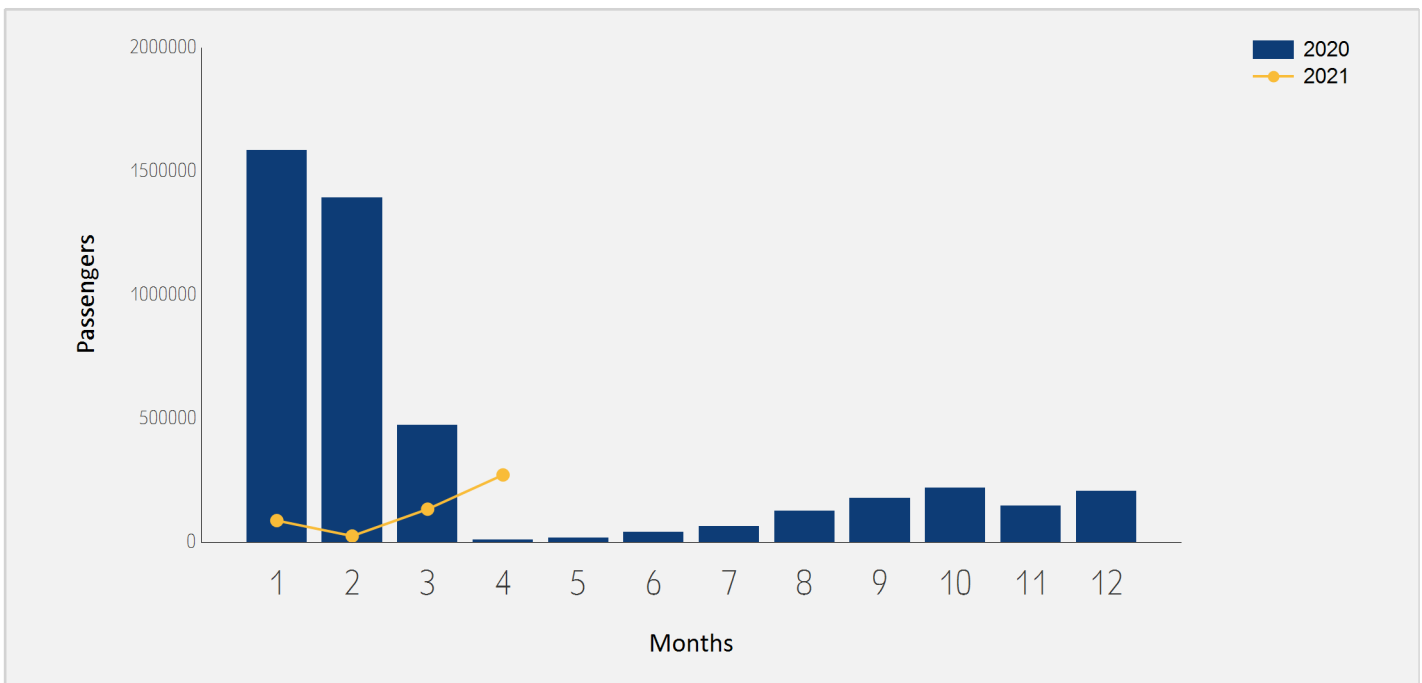




# International Passenger Traffic

## Distribution by Months

Months	2021	2020	Rate of Change
January	87,213	1,584,027	-94.49%
February	24,770	1,391,803	-98.22%
March	133,334	471,907	-71.74%
April	271,849	9,377	
<b>Total</b>	<b>517,166</b>	<b>3,457,114</b>	<b>-85.04%</b>

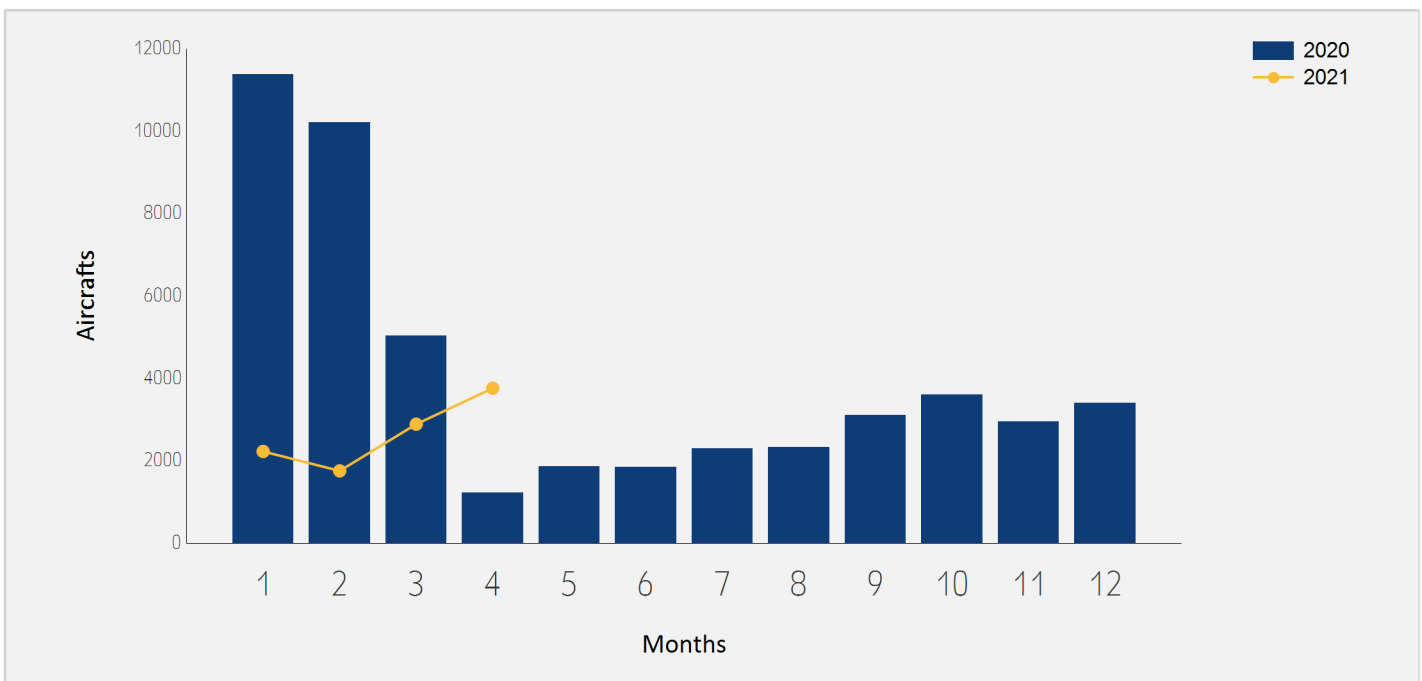




# International Aircraft Traffic

## Distribution by Months

Months	2021	2020	Rate of Change
January	2,225	11,374	-80.43%
February	1,753	10,207	-82.82%
March	2,887	5,038	-42.69%
April	3,759	1,225	
<b>Total</b>	<b>10,624</b>	<b>27,844</b>	<b>-61.84%</b>





# International Passenger Traffic

## Distribution by Airline for April

		April 2021		April 2020		
Airline		Passengers	Rate of Total	Passengers	Rate of Total	Rate of Change
LY	EL AL ISRAEL AIRLINES	76,237	28.04%	915	9.75%	
UA	UNITED AIRLINES	24,816	9.12%	2,679	28.56%	
6H	ISRAIR AIRLINES	18,965	6.97%	2,846	30.35%	
TK	TURKISH AIRLINES	16,367	6.02%	195	2.07%	
PS	UKRAINE INTL AIR	13,593	5.00%	13	0.13%	
PC	PEGASUS AIRLINES	13,338	4.90%			
IZ	ARKIA ISRAELI AIRLINES	12,328	4.53%	15	0.15%	
LH	LUFTHANSA	10,109	3.71%			
DL	DELTA AIRLINES	9,214	3.38%			
FZ	FLYDUBAI	8,697	3.19%			
AF	AIR FRANCE	6,170	2.26%			
EZY	EASYJET	5,766	2.12%			
FR	RYANAIR	5,216	1.91%			
ET	ETHIOPIAN AIRLINES	4,914	1.80%	233	2.48%	
W6	WIZZAIR	4,851	1.78%			
SU	AEROFLOT RUSSIAN AIRLINES	4,715	1.73%	325	3.46%	
OS	AUSTRIAN AIRLINES	3,454	1.27%			
RO	TAROM - RUMANIAN AIR TRAN	2,458	0.90%			
B2	BELAVIA AIRLINE	2,453	0.90%	1,082	11.53%	126.70%
VS	VIRGIN ATLANTIC AIRWAYS	2,138	0.78%			
KL	K.L.M.	2,061	0.75%			





# International Passenger Traffic

## Distribution by Airline for April

		April 2021		April 2020		
	Airline	Passengers	Rate of Total	Passengers	Rate of Total	Rate of Change
TO	TRANSAVIA FRANCE	2,029	0.74%			
9U	AIR MOLDOVA	2,014	0.74%			
IB	IBERIA	2,010	0.73%			
HM	AIR SEYCHELLES	1,997	0.73%			
BA	BRITISH AIRWAYS PLC	1,887	0.69%			
FB	BULGARIA AIR	1,886	0.69%			
AC	AIR CANADA	1,794	0.65%			
LX	SWISS INT`L AIRLINES	1,635	0.60%			
A9	GEORGIAN AIRWAYS	1,256	0.46%	203	2.16%	
AI	AIR INDIA	1,017	0.37%			
UX	AIR EUROPA Lineas Aereas	763	0.28%			
EY	ETIHAD AIRWAYS	527	0.19%			
LO	LOT POLISH AIRLINES	444	0.16%	36	0.38%	
A3	AEGEAN AIRLINES	435	0.16%			
5W	WIZZ AIR ABU DHABI	353	0.12%			
ASY	ROYAL AUSTRALIAN AIR FORCE	293	0.10%			
BT	AIR BALTIC	257	0.09%			
JAV	JORDANIAN AVIATION	245	0.09%			
CY	CYPRUS AIRWAYS	200	0.07%			
RJ	ROYAL JORDANIAN	156	0.05%			
QS	SMARTWINGS	148	0.05%			





# International Passenger Traffic

## Distribution by Airline for April

		April 2021		April 2020		
Airline		Passengers	Rate of Total	Passengers	Rate of Total	Rate of Change
AHS	AERO HANDLING	141	0.05%	14	0.14%	
N4	NORD WIND	128	0.04%			
	OTHERS	2,374	0.87%	821	8.75%	189.15%
TOTAL		271,849		9,377		





# Int'l Accumulated Passenger Traffic

## Distribution by Airline

		Accumulated 2021		Accumulated 2020		
Airline		Passengers	Rate of Total	Passengers	Rate of Total	Rate of Change
LY	EL AL ISRAEL AIRLINES	133,046	25.72%	805,373	23.29%	-83.48%
UA	UNITED AIRLINES	53,148	10.27%	150,574	4.35%	-64.70%
6H	ISRAIR AIRLINES	40,587	7.84%	92,989	2.68%	-56.35%
TK	TURKISH AIRLINES	34,190	6.61%	196,295	5.67%	-82.58%
PC	PEGASUS AIRLINES	25,713	4.97%	85,282	2.46%	-69.84%
PS	UKRAINE INTL AIR	25,489	4.92%	75,956	2.19%	-66.44%
LH	LUFTHANSA	22,551	4.36%	93,562	2.70%	-75.89%
DL	DELTA AIRLINES	22,530	4.35%	40,900	1.18%	-44.91%
IZ	ARKIA ISRAELI AIRLINES	22,098	4.27%	34,632	1.00%	-36.19%
FZ	FLYDUBAI	15,785	3.05%			
AF	AIR FRANCE	12,764	2.46%	51,752	1.49%	-75.33%
ET	ETHIOPIAN AIRLINES	11,915	2.30%	28,805	0.83%	-58.63%
SU	AEROFLOT RUSSIAN AIRLINES	9,410	1.81%	112,863	3.26%	-91.66%
EZY	EASYJET	7,842	1.51%	241,922	6.99%	-96.75%
W6	WIZZAIR	6,385	1.23%	216,533	6.26%	-97.05%
FR	RYANAIR	6,325	1.22%	208,235	6.02%	-96.96%
OS	AUSTRIAN AIRLINES	5,580	1.07%	44,351	1.28%	-87.41%
TO	TRANSAVIA FRANCE	4,576	0.88%	61,524	1.77%	-92.56%
VS	VIRGIN ATLANTIC AIRWAYS	4,270	0.82%	25,246	0.73%	-83.08%
RO	TAROM - RUMANIAN AIR TRAN	4,156	0.80%	18,083	0.52%	-77.01%
AC	AIR CANADA	3,987	0.77%	27,263	0.78%	-85.37%







# Int'l Accumulated Passenger Traffic

## Distribution by Airline

		Accumulated 2021		Accumulated 2020		
Airline		Passengers	Rate of Total	Passengers	Rate of Total	Rate of Change
9U	AIR MOLDOVA	3,834	0.74%	8,088	0.23%	-52.59%
KL	K.L.M.	3,498	0.67%	26,316	0.76%	-86.70%
B2	BELAVIA AIRLINE	3,492	0.67%	10,630	0.30%	-67.14%
HM	AIR SEYCHELLES	2,892	0.55%	2,887	0.08%	0.17%
LX	SWISS INT'L AIRLINES	2,883	0.55%	47,095	1.36%	-93.87%
BA	BRITISH AIRWAYS PLC	2,851	0.55%	62,138	1.79%	-95.41%
FB	BULGARIA AIR	2,287	0.44%	11,138	0.32%	-79.46%
AI	AIR INDIA	2,231	0.43%	20,525	0.59%	-89.13%
IB	IBERIA	2,195	0.42%	30,252	0.87%	-92.74%
A3	AEGEAN AIRLINES	1,693	0.32%	53,669	1.55%	-96.84%
UX	AIR EUROPA Lineas Aereas	1,511	0.29%			
A9	GEORGIAN AIRWAYS	1,258	0.24%	22,770	0.65%	-94.47%
TWI	TAILWIND AIRLINES	754	0.14%	11,989	0.34%	-93.71%
PQ	SKYUP AIRLINES	684	0.13%	8,818	0.25%	-92.24%
CX	CATHAY PACIFIC AIRWAYS	562	0.10%	18,041	0.52%	-96.88%
EY	ETIHAD AIRWAYS	527	0.10%			
LO	LOT POLISH AIRLINES	444	0.08%	46,264	1.33%	-99.04%
HU	HAINAN AIRLINES	440	0.08%	7,382	0.21%	-94.03%
5W	WIZZ AIR ABU DHABI	353	0.06%			
AHS	AERO HANDLING	327	0.06%	532	0.01%	-38.53%
BT	AIR BALTIC	296	0.05%	1,681	0.04%	-82.39%





# Int'l Accumulated Passenger Traffic

## Distribution by Airline

		Accumulated 2021		Accumulated 2020		
Airline		Passengers	Rate of Total	Passengers	Rate of Total	Rate of Change
ASY	ROYAL AUSTRALIAN AIR FORCE	293	0.05%			
QS	SMARTWINGS	269	0.05%	17,954	0.51%	-98.50%
JAV	JORDANIAN AVIATION	245	0.04%	2,029	0.05%	-87.92%
CY	CYPRUS AIRWAYS	230	0.04%	9,192	0.26%	-97.49%
TB	JET AIRFLY	200	0.03%			
PVG	PRIVILEG STYLE	188	0.03%	100		88.00%
RJ	ROYAL JORDANIAN	156	0.03%	27,392	0.79%	-99.43%
N4	NORD WIND	128	0.02%			
UL	SRILANKA AIRLINES	119	0.02%			
X5	AIR EUROPA EXPRESS	109	0.02%			
	OTHERS	7,870	1.52%	398,092	11.51%	-98.02%
	<b>TOTAL</b>	<b>517,166</b>		<b>3,457,114</b>		<b>-85.04%</b>





# International Passenger Traffic

## Distribution by Israeli Airlines for April

		April 2021		April 2020		
Airlines		Passengers	Rate of Total	Passengers	Rate of Total	Rate of Change
LY	EL AL ISRAEL AIRLINES	76,237	28.04%	915	9.75%	
6H	ISR AIR AIRLINES	18,965	6.97%	2,846	30.35%	
IZ	ARKIA ISRAELI AIRLINES	12,328	4.53%	15	0.15%	
	OTHERS	469	0.17%	43	0.45%	
	<b>TOTAL</b>	<b>107,999</b>	<b>39.72%</b>	<b>3,819</b>	<b>40.72%</b>	

# Int'l Accumulated Passenger Traffic

## Distribution by Israeli Airlines

		Accumulated 2021		Accumulated 2020		
Airlines		Passengers	Rate of Total	Passengers	Rate of Total	Rate of Change
LY	EL AL ISRAEL AIRLINES	133,046	25.72%	805,373	23.29%	<b>-83.48%</b>
6H	ISR AIR AIRLINES	40,587	7.84%	92,989	2.68%	<b>-56.35%</b>
IZ	ARKIA ISRAELI AIRLINES	22,098	4.27%	34,632	1.00%	<b>-36.19%</b>
	OTHERS	2,235	0.43%	480	0.01%	
	<b>TOTAL</b>	<b>197,966</b>	<b>38.27%</b>	<b>933,474</b>	<b>27.00%</b>	<b>-78.79%</b>





# International Passenger Traffic

## Distribution by Countries for April

Countries	April 2021		April 2020		Rate of Change
	Passengers	Rate of Total	Passengers	Total of Rate	
UNITED STATES	57,604	21.18%	3,036	32.37%	
TURKEY	29,888	10.99%	213	2.27%	
UNITED ARAB EMIRATES	25,202	9.27%			
GEORGIA	20,823	7.65%	464	4.94%	
UKRAINE	19,382	7.12%	433	4.61%	
FRANCE	16,888	6.21%	602	6.41%	
GERMANY	13,840	5.09%	346	3.68%	
CYPRUS	12,552	4.61%	21	0.22%	
UNITED KINGDOM	10,573	3.88%	472	5.03%	
RUSSIAN FEDERATION	8,442	3.10%	788	8.40%	
BULGARIA	6,228	2.29%	27	0.28%	
SEYCHELLES	5,845	2.15%			
ETHIOPIA	4,914	1.80%	233	2.48%	
AUSTRIA	4,772	1.75%	218	2.32%	
GREECE	3,780	1.39%	7	0.07%	
ROMANIA	3,520	1.29%	268	2.85%	
SWITZERLAND	3,509	1.29%	4	0.04%	
NETHERLANDS	3,150	1.15%	64	0.68%	
SPAIN	2,812	1.03%	1	0.01%	
BELARUS	2,477	0.91%	1,086	11.58%	128.08%
MOLDOVA	2,069	0.76%	112	1.19%	
HUNGARY	1,877	0.69%	67	0.71%	





# International Passenger Traffic

## Distribution by Countries for April

Countries	April 2021		April 2020		
	Passengers	Rate of Total	Passengers	Total of Rate	Rate of Change
CANADA	1,794	0.65%	2	0.02%	
POLAND	1,573	0.57%	122	1.30%	
BELGIUM	1,416	0.52%	16	0.17%	
THAILAND	1,202	0.44%			
INDIA	1,092	0.40%			
CHINA	1,043	0.38%	73	0.77%	
JORDAN	812	0.29%	5	0.05%	
ITALY	779	0.28%	133	1.41%	
MEXICO	532	0.19%			
LATVIA	260	0.09%			
MONTENEGRO	170	0.06%	21	0.22%	
CZECH REPUBLIC	152	0.05%	3	0.03%	
UZBEKISTAN	141	0.05%	16	0.17%	
SERBIA	117	0.04%	51	0.54%	129.41%
KAZAKHSTAN	116	0.04%			
OTHERS	503	0.18%	473	5.04%	6.34%
<b>TOTAL</b>	<b>271,849</b>		<b>9,377</b>		





# Int'l Accumulated Passenger Traffic

## Distribution by Countries

Countries	Accumulated 2021		Accumulated 2020		
	Passengers	Rate of Total	Passengers	Rate of Total	Rate of Change
UNITED STATES	121,385	23.47%	357,275	10.33%	-66.02%
TURKEY	61,470	11.88%	318,447	9.21%	-80.69%
GERMANY	44,946	8.69%	236,740	6.84%	-81.01%
UKRAINE	39,898	7.71%	109,410	3.16%	-63.53%
FRANCE	39,546	7.64%	239,443	6.92%	-83.48%
UNITED ARAB EMIRATES	39,152	7.57%			
GEORGIA	22,895	4.42%	58,279	1.68%	-60.71%
UNITED KINGDOM	22,645	4.37%	233,458	6.75%	-90.30%
RUSSIAN FEDERATION	15,409	2.97%	189,733	5.48%	-91.87%
CYPRUS	14,177	2.74%	74,226	2.14%	-80.90%
ETHIOPIA	12,144	2.34%	28,836	0.83%	-57.88%
BULGARIA	7,807	1.50%	74,849	2.16%	-89.56%
SEYCHELLES	7,392	1.42%	3,955	0.11%	86.90%
AUSTRIA	7,333	1.41%	107,752	3.11%	-93.19%
GREECE	5,869	1.13%	87,041	2.51%	-93.25%
ROMANIA	5,306	1.02%	116,509	3.37%	-95.44%
NETHERLANDS	5,075	0.98%	105,699	3.05%	-95.19%
SWITZERLAND	4,908	0.94%	108,665	3.14%	-95.48%
MOLDOVA	4,135	0.79%	9,728	0.28%	-57.49%
CANADA	4,010	0.77%	40,641	1.17%	-90.13%
SPAIN	3,967	0.76%	150,936	4.36%	-97.37%
BELARUS	3,537	0.68%	10,634	0.30%	-66.73%





# Int'l Accumulated Passenger Traffic

## Distribution by Countries

Countries	Accumulated 2021		Accumulated 2020		
	Passengers	Rate of Total	Passengers	Rate of Total	Rate of Change
THAILAND	3,441	0.66%	40,546	1.17%	-91.51%
INDIA	3,095	0.59%	40,011	1.15%	-92.26%
HUNGARY	2,888	0.55%	95,368	2.75%	-96.97%
CHINA	2,691	0.52%	40,410	1.16%	-93.34%
POLAND	1,959	0.37%	130,329	3.76%	-98.49%
ITALY	1,789	0.34%	175,131	5.06%	-98.97%
BELGIUM	1,775	0.34%	45,616	1.31%	-96.10%
JORDAN	1,404	0.27%	29,729	0.85%	-95.27%
MEXICO	572	0.11%			
EGYPT	503	0.09%	9,601	0.27%	-94.76%
SERBIA	376	0.07%	8,836	0.25%	-95.74%
CZECH REPUBLIC	344	0.06%	46,807	1.35%	-99.26%
LATVIA	300	0.05%	1,690	0.04%	-82.24%
UZBEKISTAN	296	0.05%	6,612	0.19%	-95.52%
AZERBAIJAN	230	0.04%	8,636	0.24%	-97.33%
MONTENEGRO	218	0.04%	33		
PANAMA	200	0.03%			
GHANA	197	0.03%	34		
EQUATORIAL GUINEA	189	0.03%			
LITHUANIA	156	0.03%	14,191	0.41%	-98.90%
BRAZIL	134	0.02%	15,433	0.44%	-99.13%
KAZAKHSTAN	116	0.02%			





# Int'l Accumulated Passenger Traffic

## Distribution by Countries

Countries	Accumulated 2021		Accumulated 2020		
	Passengers	Rate of Total	Passengers	Rate of Total	Rate of Change
GIBRALTAR	103	0.01%	8		
OTHERS	1,184	0.22%	85,837	2.48%	-98.62%
<b>TOTAL</b>	<b>517,166</b>		<b>3,457,114</b>		<b>-85.04%</b>







# International Passenger Traffic

## Distribution by First Destination for April

Destination	April 2021		April 2020		
	Passengers	Rate of Total	Passengers	Rate of Total	Rate of Change
NEW YORK - NEWARK	25,771	9.47%	2,679	28.56%	
DUBAI	23,971	8.81%			
NEW YORK - J.F.KENNEDY	20,427	7.51%	18	0.19%	
KIEV KYIV-BORISPOL	18,058	6.64%	432	4.60%	
ISTANBUL-SABIHA GOKCHEN	16,705	6.14%			
PARIS-CHARLES DE GAULLE	14,820	5.45%	583	6.21%	
BATUMI	14,062	5.17%			
ISTANBUL	13,048	4.79%	175	1.86%	
LARNACA	10,095	3.71%	21	0.22%	
FRANKFURT	10,078	3.70%	344	3.66%	
LONDON - HEATHROW	9,008	3.31%			
TBILISI	6,761	2.48%	464	4.94%	
MAHE SEYCHELLES INTL	5,845	2.15%			
SOFIA	5,621	2.06%	21	0.22%	
ADDIS ABABA	4,914	1.80%	233	2.48%	
VIENNA	4,772	1.75%	215	2.29%	
MOSCOW	4,720	1.73%	69	0.73%	
SAN FRANCISCO	4,387	1.61%			
MIAMI INTERNATIONAL	4,030	1.48%	168	1.79%	
ATHENS	3,738	1.37%	2	0.02%	
MOSCOW-DOMODEDOVO	3,452	1.26%	426	4.54%	
BUCHAREST - OTOPENI	3,370	1.23%	263	2.80%	





# International Passenger Traffic

## Distribution by First Destination for April

Destination	April 2021		April 2020		
	Passengers	Rate of Total	Passengers	Rate of Total	Rate of Change
AMSTERDAM	3,137	1.15%	64	0.68%	
MADRID	2,773	1.02%			
LOS ANGELES	2,682	0.98%			
MINSK	2,477	0.91%	1,086	11.58%	128.08%
PAPHOS	2,457	0.90%			
BERLIN BRANDENBURG INTL	2,204	0.81%			
CHISINAU	2,069	0.76%	112	1.19%	
PARIS-ORLY	2,029	0.74%			
BUDAPEST	1,877	0.69%	67	0.71%	
TORONTO	1,794	0.65%			
ZURICH	1,660	0.61%	2	0.02%	
LUTON	1,519	0.55%	13	0.13%	
MUNICH	1,474	0.54%			
BRUSSELS	1,388	0.51%			
ODESA	1,287	0.47%	1	0.01%	
BANGKOK INTL.-SUVARNA BHUM	1,202	0.44%			
SHANGHAI PUDONG	1,037	0.38%	6	0.06%	
DELHI	1,017	0.37%			
BASEL	945	0.34%			
ABU DHABI	909	0.33%			
GENEVA	893	0.32%	2	0.02%	
KRAKOW	784	0.28%			





# International Passenger Traffic

## Distribution by First Destination for April

Destination	April 2021		April 2020		
	Passengers	Rate of Total	Passengers	Rate of Total	Rate of Change
AMMAN (QUEEN ALIA INT'L)	758	0.27%			
VARNA	607	0.22%	6	0.06%	
BERGAMO	579	0.21%			
CANCUN- MEXICO	532	0.19%			
WARSAW	460	0.16%	39	0.41%	
RZESZOW-JASIONKA	329	0.12%			
RIGA	260	0.09%			
ST. PETERSBURG	189	0.06%	260	2.77%	-27.30%
DUBAI AL MAKTOUM INT AP	173	0.06%			
TIVAT	166	0.06%			
HOUSTON INTERCONTINENTAL	155	0.05%	158	1.68%	-1.89%
PRAGUE-RUZYNE	152	0.05%	3	0.03%	
TASHKENT	141	0.05%	3	0.03%	
MILAN-MALPENSA	135	0.04%			
AL BATEEN EXECUTIVE AP	134	0.04%			
CLUJ NAPOCA	118	0.04%			
BELGRADE	117	0.04%	51	0.54%	129.41%
ALMATY	116	0.04%			
DALAMAN	107	0.03%			
OTHERS	1,354	0.49%	1,391	14.83%	-2.65%
<b>TOTAL</b>	<b>271,849</b>		<b>9,377</b>		





# Int'l Accumulated Passenger Traffic

## Distribution by First Destination

Destination	Accumulated 2021		Accumulated 2020		Rate of Change
	Passengers	Rate of Total	Passengers	Rate of Total	
NEW YORK - J.F.KENNEDY	52,429	10.13%	101,423	2.93%	-48.30%
NEW YORK - NEWARK	51,100	9.88%	147,331	4.26%	-65.31%
FRANKFURT	39,538	7.64%	76,635	2.21%	-48.40%
KIEV KYIV-BORISPOL	37,785	7.30%	78,043	2.25%	-51.58%
DUBAI	37,443	7.24%			
PARIS-CHARLES DE GAULLE	34,814	6.73%	128,059	3.70%	-72.81%
ISTANBUL-SABIHA GOKCHEN	32,539	6.29%	91,168	2.63%	-64.30%
ISTANBUL	28,292	5.47%	190,359	5.50%	-85.13%
LONDON - HEATHROW	19,829	3.83%	133,682	3.86%	-85.16%
BATUMI	15,270	2.95%	17,244	0.49%	-11.44%
ADDIS ABABA	12,144	2.34%	28,836	0.83%	-57.88%
LARNACA	11,558	2.23%	39,754	1.14%	-70.92%
MOSCOW	9,410	1.81%	112,692	3.25%	-91.64%
TBILISI	7,625	1.47%	41,035	1.18%	-81.41%
MAHE SEYCHELLES INTL	7,392	1.42%	3,955	0.11%	86.90%
VIENNA	7,333	1.41%	105,013	3.03%	-93.01%
SOFIA	7,200	1.39%	64,692	1.87%	-88.87%
SAN FRANCISCO	7,118	1.37%	42,935	1.24%	-83.42%
MIAMI INTERNATIONAL	5,815	1.12%	19,018	0.55%	-69.42%
ATHENS	5,702	1.10%	74,987	2.16%	-92.39%
MOSCOW-DOMODEDOVO	5,547	1.07%	13,829	0.40%	-59.88%
BUCHAREST - OTOPENI	5,132	0.99%	97,044	2.80%	-94.71%





# Int'l Accumulated Passenger Traffic

## Distribution by First Destination

Destination	Accumulated 2021		Accumulated 2020		
	Passengers	Rate of Total	Passengers	Rate of Total	Rate of Change
AMSTERDAM	5,049	0.97%	98,407	2.84%	-94.86%
PARIS-ORLY	4,439	0.85%	54,874	1.58%	-91.91%
CHISINAU	4,135	0.79%	9,728	0.28%	-57.49%
TORONTO	3,987	0.77%	40,522	1.17%	-90.16%
LOS ANGELES	3,795	0.73%	14,945	0.43%	-74.60%
MADRID	3,763	0.72%	98,030	2.83%	-96.16%
BERLIN BRANDENBURG INTL	3,579	0.69%			
MINSK	3,537	0.68%	10,634	0.30%	-66.73%
BANGKOK INTL.-SUARNABHUM	3,441	0.66%	40,546	1.17%	-91.51%
ZURICH	2,943	0.56%	66,337	1.91%	-95.56%
BUDAPEST	2,888	0.55%	89,224	2.58%	-96.76%
PAPHOS	2,619	0.50%	34,442	0.99%	-92.39%
DELHI	2,576	0.49%	20,786	0.60%	-87.60%
LUTON	2,519	0.48%	70,214	2.03%	-96.41%
ODESA	2,034	0.39%	12,219	0.35%	-83.35%
MUNICH	1,705	0.32%	51,768	1.49%	-96.70%
BRUSSELS	1,700	0.32%	32,764	0.94%	-94.81%
SHANGHAI PUDONG	1,635	0.31%	6		
AMMAN (QUEEN ALIA INT'L)	1,141	0.22%	29,523	0.85%	-96.13%
GENEVA	990	0.19%	31,074	0.89%	-96.81%
ABU DHABI	948	0.18%			
BASEL	945	0.18%	11,187	0.32%	-91.55%





# Int'l Accumulated Passenger Traffic

## Distribution by First Destination

Destination	Accumulated 2021		Accumulated 2020		
	Passengers	Rate of Total	Passengers	Rate of Total	Rate of Change
KRAKOW	821	0.15%	29,790	0.86%	-97.24%
BERGAMO	674	0.13%	10,688	0.30%	-93.69%
HOUSTON INTERCONTINENTAL	643	0.12%	203		
HONG KONG INT'L	616	0.11%	27,516	0.79%	-97.76%
VARNA	607	0.11%	8,148	0.23%	-92.55%
WARSAW	600	0.11%	65,404	1.89%	-99.08%
ROME - FIUMICINO	534	0.10%	101,641	2.94%	-99.47%
CANCUN- MEXICO	532	0.10%			
DUBAI AL MAKTOUM INT AP	386	0.07%			
BELGRADE	376	0.07%	8,836	0.25%	-95.74%
AL BATEEN EXECUTIVE AP	352	0.06%			
RZESZOW-JASIONKA	329	0.06%	1,118	0.03%	-70.57%
BANGALORE	319	0.06%			
RIGA	300	0.05%	1,690	0.04%	-82.24%
TASHKENT	296	0.05%	6,599	0.19%	-95.51%
PRAGUE-RUZYNE	284	0.05%	46,782	1.35%	-99.39%
CHICAGO - O'HARE	276	0.05%	2		
MILAN-MALPENSA	261	0.05%	38,453	1.11%	-99.32%
BEIJING	254	0.04%	8,451	0.24%	-96.99%
CAIRO INTERNATIONAL	245	0.04%	7,865	0.22%	-96.88%
MOSCOW-VNUKOVO	241	0.04%	477	0.01%	-49.47%
SHARM EL SHEIKH	229	0.04%	25		





# Int'l Accumulated Passenger Traffic

## Distribution by First Destination

Destination	Accumulated 2021		Accumulated 2020		Rate of Change
	Passengers	Rate of Total	Passengers	Rate of Total	
DALAMAN	225	0.04%	572	0.01%	-60.66%
KATOWICE	206	0.03%	10,523	0.30%	-98.04%
PANAMA CITY	200	0.03%			
MUMBAI	200	0.03%	12,679	0.36%	-98.42%
ACCRA-KOTOKA	197	0.03%	34		
ST. PETERSBURG	193	0.03%	19,027	0.55%	-98.98%
BATA AIRPORT	189	0.03%			
CHENGDU	186	0.03%	2,513	0.07%	-92.59%
BAKU HEYDAR ALIYEV INT'L	173	0.03%	8,636	0.24%	-97.99%
TIVAT	166	0.03%			
ANTALYA	151	0.02%	36,303	1.05%	-99.58%
LYON - SATOLAS	137	0.02%	14,240	0.41%	-99.03%
ANKARA-ESENBUGA	135	0.02%	38		
SAO PAULO (GUARULHOS INT')	134	0.02%	15,433	0.44%	-99.13%
CLUJ NAPOCA	118	0.02%	5,419	0.15%	-97.82%
ALMATY	116	0.02%			
BERLIN -SCHOENEFELD	103	0.01%	44,065	1.27%	-99.76%
GIBRALTAR	103	0.01%	8		
VILNIUS INTL	100	0.01%	13,882	0.40%	-99.27%
OTHERS	3,576	0.69%	485,090	14.03%	-99.26%
<b>TOTAL</b>	<b>517,166</b>		<b>3,457,114</b>		<b>-85.04%</b>



# Cargo Activity







# Cargo Handling

## Distribution by Transporter

Transporter	April 2021 (Ton)	April 2020 (Ton)	Rate of Change
Cargo on Passenger Aircrafts - Incoming	3,261	523	
Cargo on Passenger Aircrafts - Outgoing	3,422	512	
<b>Total Cargo on Passenger Aircrafts</b>	<b>6,683</b>	<b>1,035</b>	
Cargo on Cargo Aircrafts - Incoming	14,583	13,071	11.56%
Cargo on Cargo Aircrafts - Outgoing	8,254	6,683	23.50%
<b>Total Cargo on Cargo Aircrafts</b>	<b>22,838</b>	<b>19,755</b>	<b>15.60%</b>
<b>Total</b>	<b>29,521</b>	<b>20,790</b>	<b>41.99%</b>

## Distribution by Months

Month	2021 (ton)			2020 (ton)			Rate of Change
	Cargo	Mail	Total	Cargo	Mail	Total	
January	28,571	632	29,203	28,568	1,395	29,964	-2.53%
February	26,507	323	26,830	28,188	1,033	29,221	-8.18%
March	31,394	548	31,942	26,511	535	27,047	18.09%
April	28,776	745	29,521	20,673	116	20,790	41.99%
<b>Total</b>	<b>115,248</b>	<b>2,248</b>	<b>117,496</b>	<b>103,940</b>	<b>3,079</b>	<b>107,022</b>	<b>9.78%</b>





# Cargo Handling on Passenger Aircrafts

## Distribution by Airline for April

		April 2021				April 2020				
Airline		Incoming Cargo (Ton)	Outgoing Cargo (Ton)	Cargo (Ton)	Rate of Total	Incoming Cargo (Ton)	Outgoing Cargo (Ton)	Cargo (Ton)	Rate of Total	Rate of Change
LY	EL AL ISRAEL AIRLINES	710	975	1,685	25.21%	79	21	100	9.66%	
UA	UNITED AIRLINES	501	954	1,455	21.77%	368	442	810	78.26%	79.62%
DL	DELTA AIRLINES	262	305	567	8.48%					
TK	TURKISH AIRLINES	336	83	419	6.26%	46	3	49	4.73%	
ET	ETHIOPIAN AIRLINES	215	155	371	5.55%	4	7	11	1.06%	
VS	VIRGIN ATLANTIC AIRWAYS	218	132	350	5.23%					
AF	AIR FRANCE	213	137	350	5.23%					
IB	IBERIA	155	67	222	3.32%					
AC	AIR CANADA	86	135	221	3.30%					
LX	SWISS INT'L AIRLINES	114	107	221	3.30%					
SU	AEROFLOT RUSSIAN AIRLINES	71	124	195	2.91%	13		13	1.25%	
EY	ETIHAD AIRWAYS	77	100	177	2.64%					
BA	BRITISH AIRWAYS PLC	83	33	116	1.73%	9		9	0.86%	
PC	PEGASUS AIRLINES	55	34	89	1.33%					
AI	AIR INDIA	25	28	53	0.79%					
FZ	FLYDUBAI	42	10	52	0.77%					
PS	UKRAINE INTL AIR	33	15	48	0.71%					
HM	AIR SEYCHELLES	22		22	0.32%					
LH	LUFTHANSA	11	6	17	0.25%					
RO	TAROM - RUMANIAN AIR TRAN	8	4	11	0.16%					
B2	BELAVIA AIRLINE	5	6	10	0.14%	2	3	6	0.57%	66.66%
OS	AUSTRIAN AIRLINES	7	2	8	0.11%					





# Cargo Handling on Passenger Aircrafts

## Distribution by Airline for April

		April 2021				April 2020				
Airline		Incoming Cargo (Ton)	Outgoing Cargo (Ton)	Cargo (Ton)	Rate of Total	Incoming Cargo (Ton)	Outgoing Cargo (Ton)	Cargo (Ton)	Rate of Total	Rate of Change
BT	AIR BALTIC	6	2	7	0.10%					
6H	ISRAIR AIRLINES		5	5	0.07%		3	3	0.28%	66.66%
FB	BULGARIA AIR	3	1	4	0.05%					
	OTHERS	5	4	10	0.14%		34	34	3.28%	-70.58%
	<b>TOTAL</b>	<b>3,261</b>	<b>3,422</b>	<b>6,683</b>		<b>523</b>	<b>512</b>	<b>1,035</b>		





# Accumulated Cargo Handling on Passengers Aircrafts

## Distribution by Airline

		Accumulated 2021				Accumulated 2020				
Airline		Incoming Cargo (Ton)	Outgoing Cargo (Ton)	Cargo (Ton)	Rate of Total	Incoming Cargo (Ton)	Outgoing Cargo (Ton)	Cargo (Ton)	Rate of Total	Rate of Change
LY	EL AL ISRAEL AIRLINES	2,027	2,439	4,465	27.80%	6,507	6,150	12,657	31.46%	-64.72%
UA	UNITED AIRLINES	1,490	2,176	3,666	22.83%	3,320	3,804	7,124	17.71%	-48.54%
DL	DELTA AIRLINES	875	957	1,832	11.41%	482	199	681	1.69%	169.01%
ET	ETHIOPIAN AIRLINES	601	409	1,010	6.29%	143	74	216	0.53%	
TK	TURKISH AIRLINES	771	237	1,008	6.27%	2,302	788	3,090	7.68%	-67.37%
VS	VIRGIN ATLANTIC AIRWAYS	415	321	736	4.58%	586	444	1,029	2.55%	-28.47%
LX	SWISS INT'L AIRLINES	250	213	463	2.88%	1,496	821	2,317	5.76%	-80.01%
AC	AIR CANADA	193	239	432	2.69%	867	663	1,531	3.80%	-71.78%
SU	AEROFLOT RUSSIAN AIRLINES	172	259	431	2.68%	1,494	1,389	2,882	7.16%	-85.04%
AF	AIR FRANCE	233	159	392	2.44%	32	67	99	0.24%	
BA	BRITISH AIRWAYS PLC	147	124	270	1.68%	1,071	684	1,755	4.36%	-84.61%
IB	IBERIA	156	70	226	1.40%	709	218	927	2.30%	-75.62%
PC	PEGASUS AIRLINES	103	78	181	1.12%	180	114	293	0.72%	-38.22%
EY	ETIHAD AIRWAYS	77	100	177	1.10%					
FZ	FLYDUBAI	93	18	111	0.69%					
PS	UKRAINE INTL AIR	66	33	99	0.61%	65	84	150	0.37%	-34.00%
AI	AIR INDIA	43	53	96	0.59%	466	250	715	1.77%	-86.57%
LH	LUFTHANSA	34	14	48	0.29%	137	151	287	0.71%	-83.27%
HM	AIR SEYCHELLES	32	1	33	0.20%	8	2	9	0.02%	
6H	ISRAIR AIRLINES	1	22	22	0.13%		22	22	0.05%	
RO	TAROM - RUMANIAN AIR TRAN	12	5	17	0.10%	37	27	65	0.16%	-73.84%
B2	BELAVIA AIRLINE	8	9	17	0.10%	9	27	36	0.08%	-52.77%





# Accumulated Cargo Handling on Passengers Aircrafts

## Distribution by Airline

		Accumulated 2021				Accumulated 2020				
Airline		Incoming Cargo (Ton)	Outgoing Cargo (Ton)	Cargo (Ton)	Rate of Total	Incoming Cargo (Ton)	Outgoing Cargo (Ton)	Cargo (Ton)	Rate of Total	Rate of Change
OS	AUSTRIAN AIRLINES	12	2	14	0.08%	26	21	47	0.11%	-70.21%
BT	AIR BALTIC	6	2	8	0.04%	2	3	5	0.01%	60.00%
FB	BULGARIA AIR	4	1	4	0.02%	9	2	11	0.02%	-63.63%
	OTHERS	183	115	298	1.85%	2,777	1,493	4,270	10.61%	-93.02%
	<b>TOTAL</b>	<b>8,003</b>	<b>8,053</b>	<b>16,056</b>		<b>22,722</b>	<b>17,496</b>	<b>40,220</b>		<b>-60.07%</b>





# Cargo Handling on Cargo Aircrafts

## Distribution by Airlines April

		April 2021				April 2020				
Airline		Incoming Cargo (Ton)	Outgoing Cargo (Ton)	Cargo (Ton)	Rate of Total	Incoming Cargo (Ton)	Outgoing Cargo (Ton)	Cargo (Ton)	Rate of Total	Rate of Change
ICL	C.A.L ISRAELI CARGO	3,448	2,220	5,668	24.81%	1,561	659	2,219	11.23%	155.43%
LY	EL AL ISRAEL AIRLINES	2,343	1,776	4,118	18.03%	2,851	1,366	4,217	21.34%	-2.34%
TK	TURKISH AIRLINES	2,279	537	2,816	12.33%	1,488	479	1,966	9.95%	43.23%
QY	EUROPEAN AIR TRANSPORT	1,062	843	1,905	8.34%	1,131	576	1,707	8.64%	11.59%
MNB	MNG CARGO AIRLINES	1,322	229	1,551	6.79%	808	216	1,024	5.18%	51.46%
AZG	SILK WAY WEST AIRLINES	702	771	1,473	6.44%	925	746	1,672	8.46%	-11.90%
LH	LUFTHANSA	635	409	1,044	4.57%	584	390	974	4.93%	7.18%
HU	HAINAN AIRLINES	826	48	874	3.82%	71	25	96	0.48%	
FX	FEDERAL EXPRESS	468	349	816	3.57%	575	316	891	4.51%	-8.41%
CX	CATHAY PACIFIC AIRWAYS	300	171	471	2.06%	24	14	38	0.19%	
3V	ASL AIRLINES BELGIUM	277	174	451	1.97%	259	148	407	2.06%	10.81%
3U	SICHUAN AIRLINES	195	65	259	1.13%	286	44	330	1.67%	-21.51%
EY	ETIHAD AIRWAYS	72	168	240	1.05%					
BA	BRITISH AIRWAYS PLC	82	148	229	1.00%	140	224	364	1.84%	-37.08%
IB	IBERIA	169	26	195	0.85%					
ABD	ATLANTA ICELANDIC	88	93	181	0.79%					
PC	PEGASUS AIRLINES	119	31	150	0.65%					
KE	KOREAN AIR	71	32	103	0.45%	30	10	40	0.20%	157.50%
ADB	ANTONOV AIRLINES		62	62	0.27%					
SU	AEROFLOT RUSSIAN AIRLINES	19	30	49	0.21%	18	14	32	0.16%	53.12%
ET	ETHIOPIAN AIRLINES	43	5	48	0.21%	157	16	173	0.87%	-72.25%
M4	POSTE AIR CARGO	26	20	47	0.20%					





# Cargo Handling on Cargo Aircrafts

## Distribution by Airlines April

		April 2021				April 2020				
Airline		Incoming Cargo (Ton)	Outgoing Cargo (Ton)	Cargo (Ton)	Rate of Total	Incoming Cargo (Ton)	Outgoing Cargo (Ton)	Cargo (Ton)	Rate of Total	Rate of Change
UA	UNITED AIRLINES	9	24	33	0.14%	62	101	162	0.82%	-79.62%
6H	ISRAIR AIRLINES	24	2	26	0.11%	104	48	152	0.76%	-82.89%
QAS	QUALITY AIR SERVICES		22	22	0.09%					
	OTHERS	4	2	6	0.02%	1,997	1,293	3,290	16.65%	-99.81%
	<b>TOTAL</b>	<b>14,583</b>	<b>8,254</b>	<b>22,838</b>		<b>13,071</b>	<b>6,683</b>	<b>19,755</b>		<b>15.60%</b>





# Accumulated Cargo Handling on Cargo Aircrafts

## Distribution by Airline

		Accumulated 2021				Accumulated 2020				
Airline		Incoming Cargo (Ton)	Outgoing Cargo (Ton)	Cargo (Ton)	Rate of Total	Incoming Cargo (Ton)	Outgoing Cargo (Ton)	Cargo (Ton)	Rate of Total	Rate of Change
ICL	C.A.L ISRAELI CARGO	14,458	8,398	22,856	22.53%	7,533	5,832	13,366	20.00%	71.00%
LY	EL AL ISRAEL AIRLINES	10,373	7,223	17,596	17.34%	7,593	4,025	11,619	17.39%	51.44%
TK	TURKISH AIRLINES	9,280	2,511	11,791	11.62%	4,512	1,675	6,187	9.26%	90.57%
QY	EUROPEAN AIR TRANSPORT	4,458	3,281	7,739	7.62%	3,597	2,414	6,012	8.99%	28.72%
AZG	SILK WAY WEST AIRLINES	2,999	3,340	6,338	6.24%	2,949	2,599	5,548	8.30%	14.23%
MN B	MNG CARGO AIRLINES	5,000	998	5,998	5.91%	3,413	1,033	4,446	6.65%	34.90%
LH	LUFTHANSA	3,256	2,159	5,416	5.33%	2,259	1,758	4,016	6.01%	34.86%
FX	FEDERAL EXPRESS	1,930	1,463	3,393	3.34%	1,676	1,332	3,008	4.50%	12.79%
HU	HAINAN AIRLINES	3,260	61	3,322	3.27%	71	25	96	0.14%	
UA	UNITED AIRLINES	920	1,228	2,148	2.11%	62	101	162	0.24%	
3V	ASL AIRLINES BELGIUM	1,084	652	1,735	1.71%	1,106	641	1,748	2.61%	-0.74%
CX	CATHAY PACIFIC AIRWAYS	884	680	1,564	1.54%	24	14	38	0.05%	
BA	BRITISH AIRWAYS PLC	639	832	1,472	1.45%	143	242	385	0.57%	
IB	IBERIA	750	279	1,029	1.01%					
ET	ETHIOPIAN AIRLINES	612	381	993	0.97%	157	16	173	0.25%	
SU	AEROFLOT RUSSIAN AIRLINES	383	506	889	0.87%	18	14	32	0.04%	
3U	SICHUAN AIRLINES	592	199	791	0.77%	286	44	330	0.49%	139.69%
PC	PEGASUS AIRLINES	333	149	483	0.47%					
KE	KOREAN AIR	168	255	423	0.41%	30	10	40	0.05%	
EY	ETIHAD AIRWAYS	72	168	240	0.23%					
ABD	ATLANTA ICELANDIC	88	93	181	0.17%					
ADB	ANTONOV AIRLINES	42	101	143	0.14%	75		75	0.11%	90.66%







# Accumulated Cargo Handling on Cargo Aircrafts

## Distribution by Airline

		Accumulated 2021				Accumulated 2020				
Airline		Incoming Cargo (Ton)	Outgoing Cargo (Ton)	Cargo (Ton)	Rate of Total	Incoming Cargo (Ton)	Outgoing Cargo (Ton)	Cargo (Ton)	Rate of Total	Rate of Change
M4	POSTE AIR CARGO	55	33	87	0.08%					
6H	ISR AIR AIRLINES	26	5	31	0.03%	133	65	199	0.29%	-84.42%
QAS	QUALITY AIR SERVICES		22	22	0.02%	11		11	0.01%	100.00%
	OTHERS	2,620	2,139	4,759	4.69%	5,574	3,738	9,312	13.93%	-48.89%
	<b>TOTAL</b>	<b>64,281</b>	<b>37,157</b>	<b>101,440</b>		<b>41,222</b>	<b>25,578</b>	<b>66,802</b>		<b>51.85%</b>





# Cargo Handling on Cargo Aircrafts

## Distribution by Countries for April

Country	April 2021				April 2020				
	Incoming Cargo (Ton)	Outgoing Cargo (Ton)	Cargo (Ton)	Rate of Total	Incoming Cargo (Ton)	Outgoing Cargo (Ton)	Cargo (Ton)	Rate of Total	Rate of Change
BELGIUM	3,406	4,176	7,582	33.19%	2,775	3,094	5,869	29.70%	29.18%
TURKEY	2,979	796	3,775	16.52%	1,684	694	2,378	12.03%	58.74%
CHINA	3,237	509	3,746	16.40%	2,163	194	2,357	11.93%	58.93%
GERMANY	2,641	790	3,431	15.02%	2,856	1,149	4,004	20.26%	-14.31%
AZERBAIJAN	702	772	1,474	6.45%	925	746	1,672	8.46%	-11.84%
NORWAY	785		785	3.43%	413		413	2.09%	90.07%
EGYPT		409	409	1.79%	4		4	0.02%	
CYPRUS	323	77	400	1.75%	841		841	4.25%	-52.43%
FRANCE	79	185	264	1.15%	85	57	142	0.71%	85.91%
UNITED ARAB EMIRATES	72	168	240	1.05%					
UNITED KINGDOM	82	148	229	1.00%	233	270	503	2.54%	-54.47%
SPAIN	169	26	195	0.85%					
TURKMENISTAN		62	62	0.27%					
ITALY	28	21	49	0.21%	11	46	57	0.28%	-14.03%
RUSSIAN FEDERATION	19	30	49	0.21%	18	15	33	0.16%	48.48%
ETHIOPIA	43	5	48	0.21%	157	12	169	0.85%	-71.59%
UNITED STATES	9	24	33	0.14%	251	218	469	2.37%	-92.96%
SOUTH KOREA		32	32	0.14%	62	15	76	0.38%	-57.89%
HUNGARY		22	22	0.09%					
OTHERS	9	3	12	0.05%	594	173	767	3.88%	-98.43%
<b>TOTAL</b>	<b>14,583</b>	<b>8,254</b>	<b>22,838</b>		<b>13,071</b>	<b>6,683</b>	<b>19,755</b>		<b>15.60%</b>





# Accumulated Cargo Handling on Cargo Aircrafts

## Distribution by Countries

Countries	Accumulated 2021				Accumulated 2020				
	Incoming Cargo (Ton)	Outgoing Cargo (Ton)	Cargo (Ton)	Rate of Total	Incoming Cargo (Ton)	Outgoing Cargo (Ton)	Cargo (Ton)	Rate of Total	Rate of Change
BELGIUM	14,695	15,506	30,201	29.77%	12,497	13,053	25,550	38.24%	18.20%
TURKEY	13,765	3,690	17,455	17.20%	7,265	3,566	10,830	16.21%	61.17%
GERMANY	9,551	4,366	13,917	13.71%	7,940	4,280	12,220	18.29%	13.88%
CHINA	10,829	2,201	13,030	12.84%	2,163	194	2,357	3.52%	
AZERBAIJAN	2,999	3,340	6,339	6.24%	2,907	2,599	5,506	8.24%	15.12%
UNITED STATES	1,932	1,717	3,649	3.59%	323	218	541	0.80%	
NORWAY	3,571	40	3,611	3.55%	2,947		2,947	4.41%	22.53%
UNITED KINGDOM	1,237	1,349	2,586	2.54%	266	305	571	0.85%	
CYPRUS	1,660	278	1,937	1.90%	2,837	19	2,856	4.27%	-32.17%
SPAIN	1,059	284	1,343	1.32%	789		789	1.18%	70.21%
RUSSIAN FEDERATION	760	548	1,308	1.28%	18	89	108	0.16%	
FRANCE	387	907	1,295	1.27%	314	383	696	1.04%	86.06%
EGYPT		1,291	1,291	1.27%	7		7	0.01%	
ETHIOPIA	612	381	993	0.97%	157	12	169	0.25%	
ITALY	229	111	340	0.33%	41	76	117	0.17%	190.59%
SOUTH KOREA	36	270	306	0.30%	62	53	115	0.17%	166.08%
UNITED ARAB EMIRATES	72	168	240	0.23%					
TURKMENISTAN		62	62	0.06%					
HUNGARY		22	22	0.02%					
OTHERS	888	626	1,514	1.49%	690	731	1,421	2.12%	6.54%
<b>TOTAL</b>	<b>64,281</b>	<b>37,157</b>	<b>101,440</b>		<b>41,222</b>	<b>25,578</b>	<b>66,802</b>		<b>51.85%</b>



# Domestic Activity

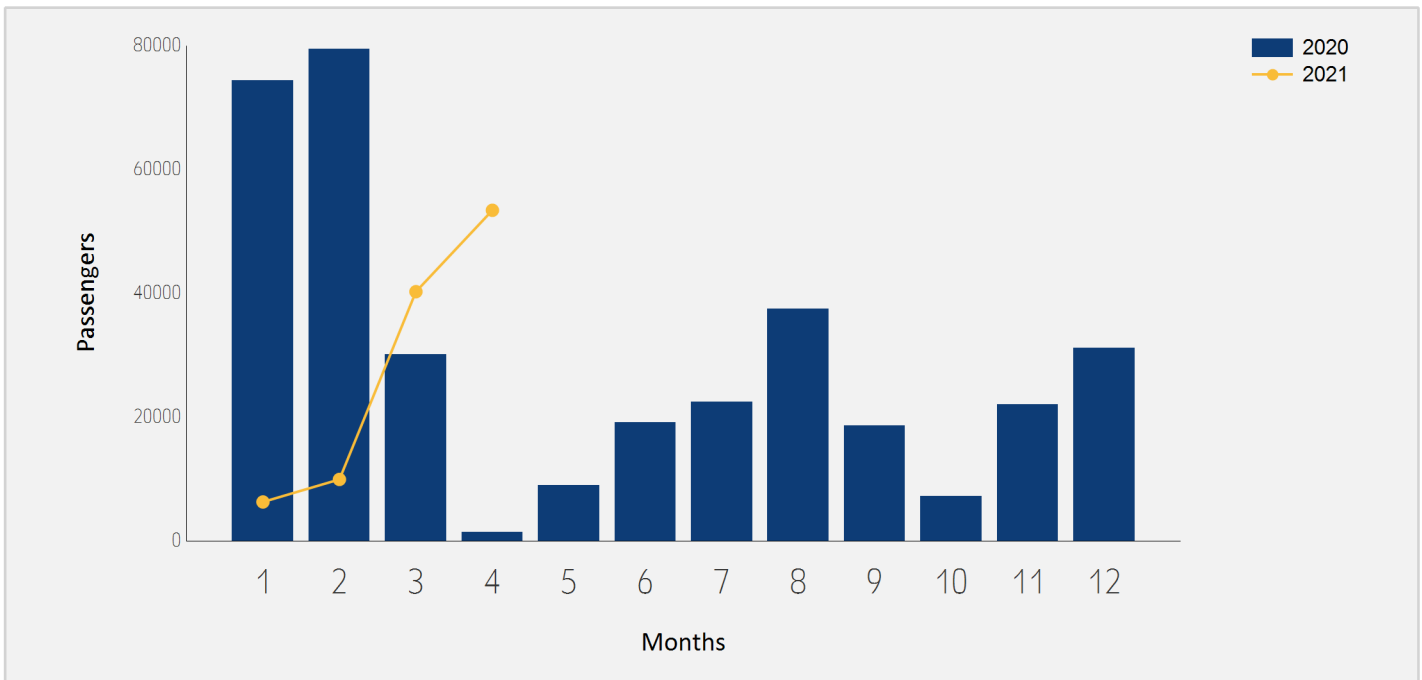




# Domestic Passenger Traffic

## Distribution by Months

Month	2021	2020	Rate of Change
January	6,294	74,380	-91.53%
February	9,936	79,475	-87.49%
March	40,264	30,137	33.60%
April	53,416	1,412	
<b>Total</b>	<b>109,910</b>	<b>185,404</b>	<b>-40.71%</b>

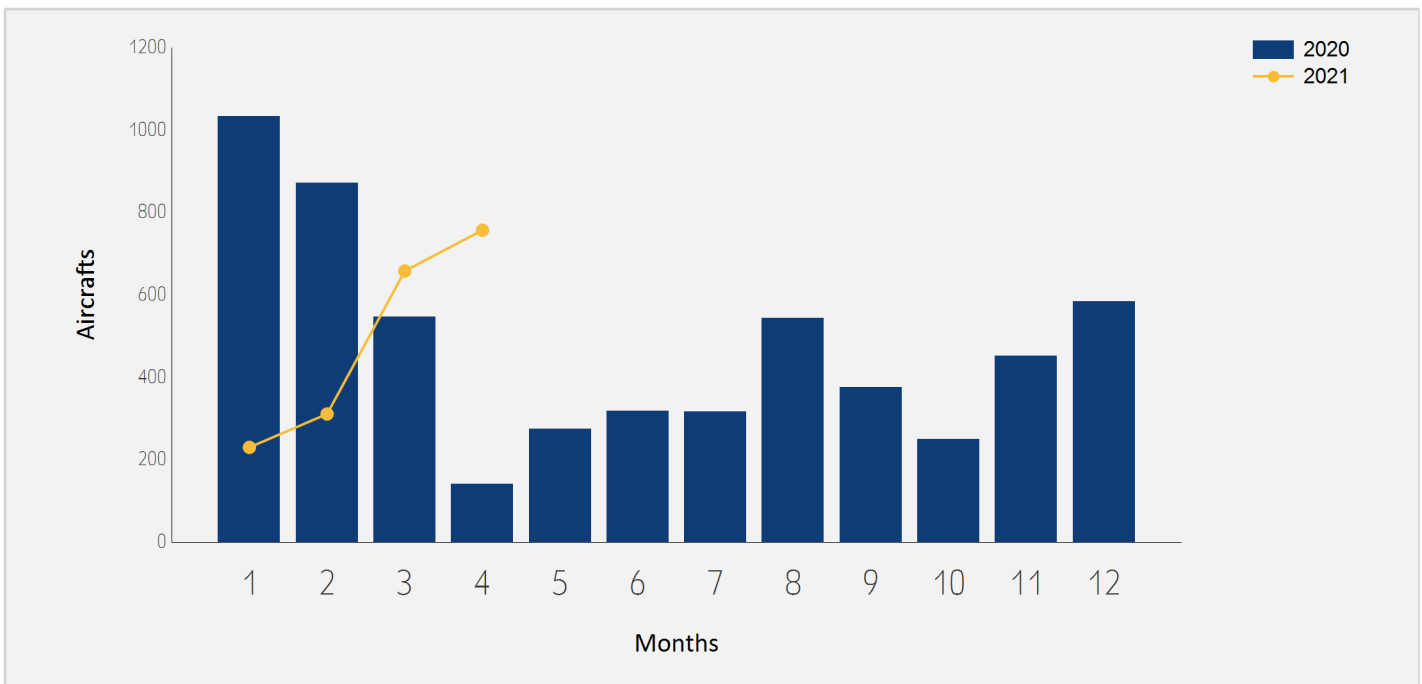




# Domestic Aircrafts Traffic

## Distribution by Months

Month	2021	2020	Rate of Change
January	230	1,033	-77.73%
February	311	871	-64.29%
March	658	547	20.29%
April	757	141	
<b>Total</b>	<b>1,956</b>	<b>2,592</b>	<b>-24.53%</b>





# Domestic Passengers Traffic

## Distribution by Airlines for April

		April 2021		April 2020		
Airline		Passengers	Rate of Total	Passengers	Rate of Total	Rate of Change
IZ	ARKIA ISRAELI AIRLINES	30,419	56.94%			
6H	ISRAIR AIRLINES	22,909	42.88%	1,412	100.00%	
	OTHERS	88	0.16%			
	<b>TOTAL</b>	<b>53,416</b>		<b>1,412</b>		

# Accumulated Domestic Passengers Traffic

## Distribution by Airlines

		Accumulated 2021		Accumulated 2020		
Airline		Passengers	Rate of Total	Passengers	Rate of Total	Rate of Change
6H	ISRAIR AIRLINES	57,811	52.59%	43,816	23.63%	31.94%
IZ	ARKIA ISRAELI AIRLINES	51,849	47.17%	141,463	76.29%	<b>-63.34%</b>
	OTHERS	250	0.22%	125	0.06%	100.00%
	<b>TOTAL</b>	<b>109,910</b>		<b>185,404</b>		<b>-40.71%</b>





# Domestic Passenger Traffic

## Distribution by Destinations for April

Destination	April 2021		April 2020		Rate of Change
	Passengers	Rate of Total	Passengers	Rate of Total	
RAMON	53,151	99.50%	1,412	100.00%	
OTHERS	265	0.49%			
<b>TOTAL</b>	<b>53,416</b>		<b>1,412</b>		

# Accumulated Domestic Passenger Traffic

## Distribution by Destinations

Destination	Accumulated 2021		Accumulated 2020		Rate of Change
	Passengers	Rate of Total	Passengers	Rate of Total	
RAMON	109,489	99.61%	184,171	99.33%	-40.55%
OTHERS	421	0.38%	1,233	0.66%	-65.85%
<b>TOTAL</b>	<b>109,910</b>		<b>185,404</b>		<b>-40.71%</b>

