



# Monthly Report

Ben Gurion International Airport

December 2024



# Israel Airport Authority

## Ben Gurion International Airport

### Produced by the Industry & Management Department

**This report is protected by copyright and is the exclusive property of the Israel Airports Authority.**

**It must be emphasized that the data in the report are based on the reports of the airlines, and received under their responsibility.**

**The information is intended for personal use, and therefore may not be quoted or passed on to any third party without written permission from the Israel Airports Authority.**

**In addition, no commercial use may be made of this report.**

**Edit Yehoshua**

Activity Coordinator

Tel. +972-3-9752017

Email: [edity@iaa.gov.il](mailto:edity@iaa.gov.il)

**Rachel Lehava**

Manager, Industrial & Management Dep.

Tel. +972-3-9752019

Email: [rachelle@iaa.gov.il](mailto:rachelle@iaa.gov.il)

**Dimitry Shumacher**

Head, Industrial & Management Dep.

Tel. +972-3-9752661

Email: [dimitrysh@iaa.gov.il](mailto:dimitrysh@iaa.gov.il)



Dear friends and partners,

I hereby respectfully submit for your review a report summarizing the aviation activity at Ben - Gurion International Airport in December 2024.

During the month, a total of 1,139,709 passengers on 8,904 international and domestic flights passed through Ben- Gurion Airport.

International passenger traffic in December totaled 1,079,330 passengers representing an increase of 105.98% compared to December 2023.

International aircraft traffic totaled 8,304 flights, representing an increase of 90.94% compared to December 2023.

On domestic flights 60,379 passengers passed through Ben- Gurion Airport this month, compared with 61,414 in December 2023, a decrease of 1.68%.

Israeli airlines carried 801,109 passengers in this month, 74.22% of all travelers passing through Ben - Gurion Airport, an increase of 66.79% relative to the previous December.

The airlines which contributed the most to the increase of passenger traffic this month are: EL AL ISRAEL AIRLINES, ARKIA ISRAELI AIRLINES and ISRAIR AIRLINES.

The Destination with the highest volume of activity was DUBAI with a total of 105,437 passengers to and from.

The country with the highest volume of activity was the UNITED ARAB EMIRATES, with 123,591 passengers, constituting 11.45% of all activity.

The countries with the highest volume of activity this month are:  
UNITED ARAB EMIRATES, UNITED STATES and GREECE.

Cargo transportation this month stood at 33,209 tons and reflects an increase of 18.99% compared to December 2023. 7,564 tons were transported in passenger aircraft and 25,645 tons in cargo aircraft.

Below you will find additional tables providing details about movements of aircraft, passengers and cargo at Ben - Gurion International Airport.

\*The Data is displayed according to actual UTC time.

Sincerely yours,

**Udi Bar Oz**

Managing Director,  
Ben-Gurion International Airport



# Content



## Aviation Activity

Aviation Activity Summary	1
International Activity Summary	2 - 4
Domestic Activity Summary	5



## International Activity

Distribution By Months	7 - 8
Distribution By Airlines	9 - 15
Distribution By Countries	16 - 21
Distribution By First Destination	22 - 33



## Cargo Activity

Distribution by Transporter	35
Distribution By Months	35
Distribution By Airlines	36 - 42
Distribution By Countries	43 - 47



## Domestic Activity

Distribution By Months	49 - 50
Distribution By Airlines	51
Distribution By Destinations	52





# Passengers and Aircrafts

## Aviation Activity at Ben Gurion International Airport

### International Activity

	Current Month			Accumulated Since the beginning of the year		
	December 2024	December 2023	Rate Of Change	2024	2023	Rate Of Change
Incoming Aircrafts	4,162	2,177	91.18%	51,092	72,402	-29.43%
Outgoing Aircrafts	4,142	2,172	90.69%	51,094	72,468	-29.49%
<b>Total Aircrafts</b>	<b>8,304</b>	<b>4,349</b>	<b>90.94%</b>	<b>102,186</b>	<b>144,870</b>	<b>-29.46%</b>
Incoming Passengers	531,704	274,575	93.64%	6,921,031	10,521,518	-34.22%
Outgoing Passengers	547,626	249,402	119.57%	6,958,459	10,570,233	-34.16%
Transit Passengers	147	325	-54.76%	2,539	2,994	-15.19%
<b>Total Passengers</b>	<b>1,079,330</b>	<b>523,977</b>	<b>105.98%</b>	<b>13,879,490</b>	<b>21,091,751</b>	<b>-34.19%</b>

### Domestic Activity

	Current Month			Accumulated Since the beginning of the year		
	December 2024	December 2023	Rate Of Change	2024	2023	Rate Of Change
Aircrafts	600	536	11.94%	6,377	7,542	-15.44%
Passengers	60,379	61,414	-1.68%	652,937	794,479	-17.81%

### International and Domestic Activity Summary

	Current Month			Accumulated Since the beginning of the year		
	December 2024	December 2023	Rate Of Change	2024	2023	Rate Of Change
Aircrafts	8,904	4,885	82.27%	108,563	152,412	-28.77%
Passengers	1,139,709	585,391	94.69%	14,532,427	21,886,230	-33.60%







# Passengers and Aircrafts

## Int'l Aviation Activity at Ben Gurion International Airport by Terminal

### Terminal 3

	Current Month			Accumulated Since the begining of the year		
	December 2024	December 2023	Rate of Change	2024	2023	Rate of Change
Incoming Aircrafts	4,162	2,177	91.18%	51,092	72,402	-29.43%
Outgoing Aircrafts	4,142	2,172	90.69%	46,909	58,254	-19.47%
Total Aircrafts	8,304	4,349	90.94%	98,001	130,656	-24.99%
Incoming Passengers	531,704	274,575	93.64%	6,921,031	10,521,518	-34.22%
Outgoing Passengers	547,626	249,402	119.57%	6,242,318	8,139,292	-23.30%
Transit Passengers	147	325	-54.76%	2,539	2,994	-15.19%
Total Passengers	1,079,330	523,977	105.98%	13,163,349	18,660,810	-29.45%

### Terminal 1

	Current Month			Accumulated Since the begining of the year		
	December 2024	December 2023	Rate of Change	2024	2023	Rate of Change
Incoming Aircrafts						
Outgoing Aircrafts				4,185	14,214	-70.55%
Total Aircrafts				4,185	14,214	-70.55%
Incoming Passengers						
Outgoing Passengers				716,141	2,430,941	-70.54%
Total Passengers				716,141	2,430,941	-70.54%





# Passengers and Aircrafts

## Int'l Aviation Activity at Ben Gurion International Airport by Flight Type

### Schedule and Charter Flights

	Current Month			Accumulated Since the beginning of the year		
	December 2024	December 2023	Rate of Change	2024	2023	Rate of Change
Incoming Aircrafts	3,396	1,574	115.75%	42,656	64,744	-34.11%
Outgoing Aircrafts	3,425	1,605	113.39%	42,991	64,903	-33.76%
<b>Total Aircrafts</b>	<b>6,821</b>	<b>3,179</b>	<b>114.56%</b>	<b>85,647</b>	<b>129,647</b>	<b>-33.93%</b>
Incoming Passengers	530,748	273,717	93.90%	6,907,532	10,504,007	-34.23%
Outgoing Passengers	546,580	248,603	119.86%	6,944,845	10,553,706	-34.19%
Transit Passengers	147	325	-54.76%	2,539	2,994	-15.19%
<b>Total Passengers</b>	<b>1,077,328</b>	<b>522,320</b>	<b>106.25%</b>	<b>13,852,377</b>	<b>21,057,713</b>	<b>-34.21%</b>

### Private Flights

	Current Month			Accumulated Since the beginning of the year		
	December 2024	December 2023	Rate of Change	2024	2023	Rate of Change
Incoming Aircrafts	263	213	23.47%	3,547	3,904	-9.14%
Outgoing Aircrafts	262	211	24.17%	3,545	3,921	-9.58%
<b>Total Aircrafts</b>	<b>525</b>	<b>424</b>	<b>23.82%</b>	<b>7,092</b>	<b>7,825</b>	<b>-9.36%</b>
Incoming Passengers	785	593	32.37%	10,799	12,525	-13.78%
Outgoing Passengers	916	520	76.15%	10,795	12,662	-14.74%
<b>Total Passengers</b>	<b>1,701</b>	<b>1,113</b>	<b>52.83%</b>	<b>21,594</b>	<b>25,187</b>	<b>-14.26%</b>





# Passengers and Aircrafts

## Int'l Aviation Activity at Ben Gurion International Airport by Flight Type

### Cargo Flights

	Current Month			Accumulated Since the beginning of the year		
	December 2024	December 2023	Rate of Change	2024	2023	Rate of Change
Incoming Aircrafts	458	340	34.70%	4,389	3,268	34.30%
Outgoing Aircrafts	415	313	32.58%	4,025	3,188	26.25%
<b>Total Aircrafts</b>	<b>873</b>	<b>653</b>	<b>33.69%</b>	<b>8,414</b>	<b>6,456</b>	<b>30.32%</b>
Incoming Passengers	55	11		362	182	98.90%
Outgoing Passengers	51	16		424	267	58.80%
<b>Total Passengers</b>	<b>106</b>	<b>27</b>		<b>786</b>	<b>449</b>	<b>75.05%</b>

### Other Flights

	Current Month			Accumulated Since the beginning of the year		
	December 2024	December 2023	Rate of Change	2024	2023	Rate of Change
Incoming Aircrafts	45	50	-10.00%	500	486	2.88%
Outgoing Aircrafts	40	43	-6.97%	533	456	16.88%
<b>Total Aircrafts</b>	<b>85</b>	<b>93</b>	<b>-8.60%</b>	<b>1,033</b>	<b>942</b>	<b>9.66%</b>
Incoming Passengers	116	254	-54.33%	2,338	4,804	-51.33%
Outgoing Passengers	79	263	-69.96%	2,395	3,598	-33.43%
<b>Total Passengers</b>	<b>195</b>	<b>517</b>	<b>-62.28%</b>	<b>4,733</b>	<b>8,402</b>	<b>-43.66%</b>







# Passengers and Aircrafts

## Domestic Aviation Activity at Ben Gurion International Airport by Flight Type

### Schedule Flights

	Current Month			Accumulated Since the beginning of the year		
	December 2024	December 2023	Rate of Change	2024	2023	Rate of Change
Aircrafts	522	437	19.45%	5,349	6,628	-19.29%
Passengers	60,328	61,370	-1.69%	650,691	791,299	-17.76%

### Private Flights

	Current Month			Accumulated Since the beginning of the year		
	December 2024	December 2023	Rate of Change	2024	2023	Rate of Change
Aircrafts	26	24	8.33%	345	258	33.72%
Passengers	45	11		293	235	24.68%

### Other Flights

	Current Month			Accumulated Since the beginning of the year		
	December 2024	December 2023	Rate of Change	2024	2023	Rate of Change
Aircrafts	52	75	-30.66%	683	656	4.11%
Passengers	6	33	-81.81%	1,953	2,945	-33.68%





# International Activity

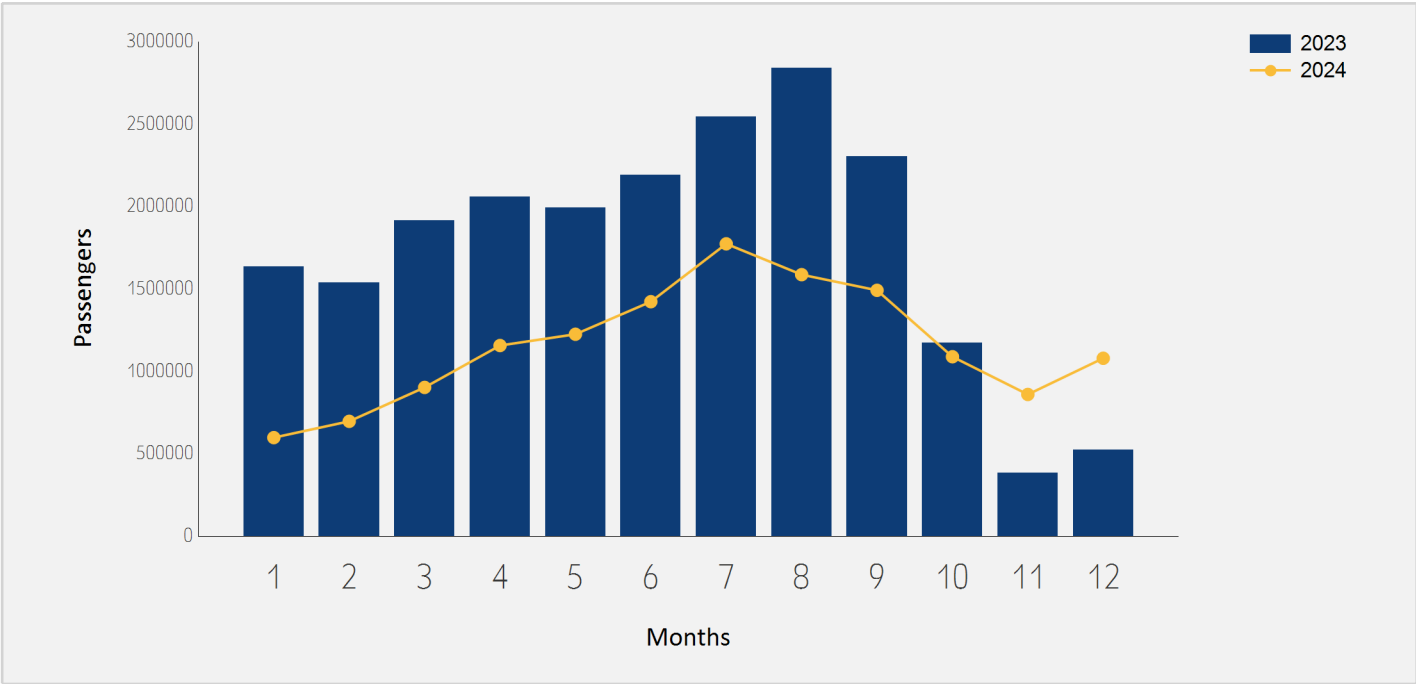




# International Passenger Traffic

## Distribution by Months

Months	2024	2023	Rate of Change
January	597,840	1,633,165	-63.39%
February	696,681	1,537,871	-54.69%
March	902,252	1,913,725	-52.85%
April	1,156,566	2,058,608	-43.81%
May	1,224,965	1,993,164	-38.54%
June	1,422,380	2,191,869	-35.10%
July	1,773,493	2,544,809	-30.30%
August	1,586,470	2,838,037	-44.09%
September	1,491,519	2,302,328	-35.21%
October	1,088,388	1,172,164	-7.14%
November	859,606	382,034	125.00%
December	1,079,330	523,977	105.98%
Total	13,879,490	21,091,751	-34.19%

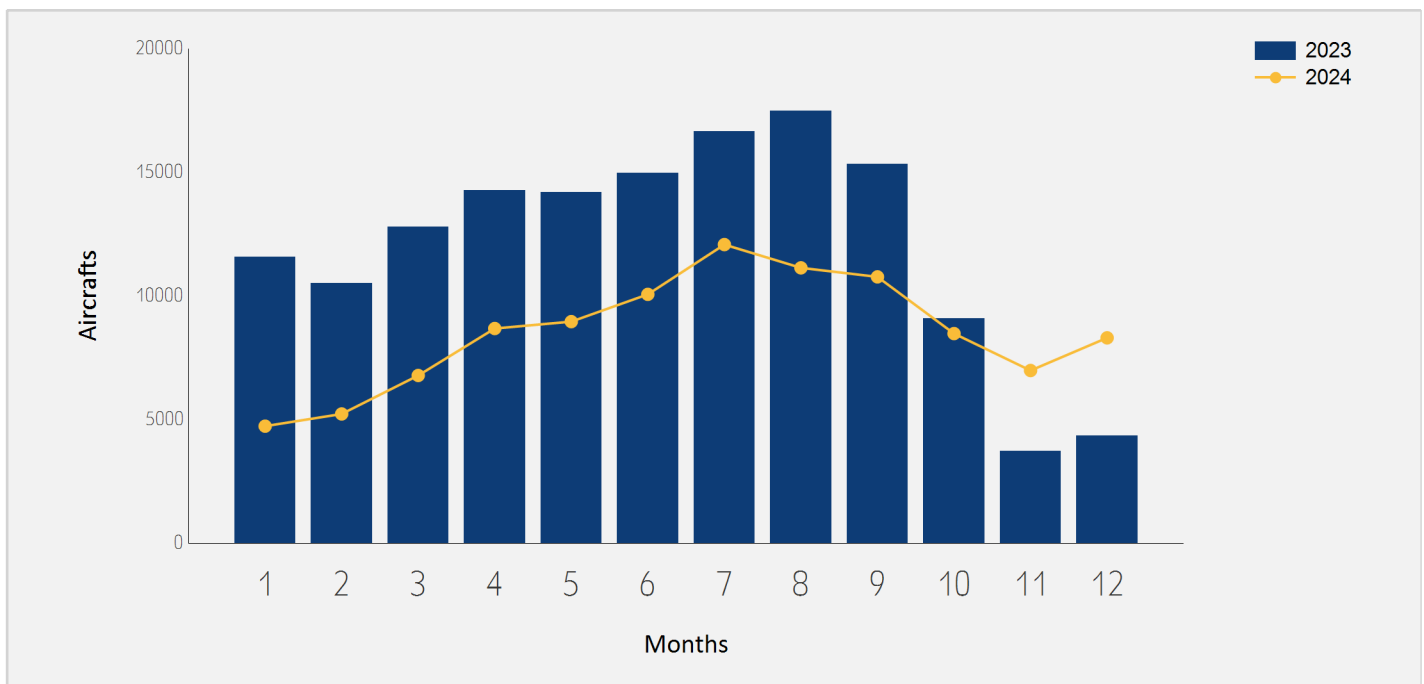




# International Aircraft Traffic

## Distribution by Months

Months	2024	2023	Rate of Change
January	4,732	11,574	-59.11%
February	5,225	10,497	-50.22%
March	6,781	12,792	-46.99%
April	8,682	14,275	-39.18%
May	8,960	14,182	-36.82%
June	10,063	14,961	-32.73%
July	12,076	16,639	-27.42%
August	11,135	17,490	-36.33%
September	10,770	15,318	-29.69%
October	8,476	9,079	-6.64%
November	6,982	3,714	87.99%
December	8,304	4,349	90.94%
<b>Total</b>	<b>102,186</b>	<b>144,870</b>	<b>-29.46%</b>





# International Passenger Traffic

## Distribution by Airline for December

		December 2024		December 2023		
Airline		Passengers	Rate of Total	Passengers	Rate of Total	Rate of Change
LY	EL AL ISRAEL AIRLINES	550,467	51.00%	415,524	79.30%	32.47%
6H	ISRAIR AIRLINES	142,322	13.18%	53,280	10.16%	167.12%
IZ	ARKIA ISRAELI AIRLINES	102,784	9.52%	11,226	2.14%	
FZ	FLYDUBAI	62,932	5.83%	16,822	3.21%	
BZ	BLUE BIRD AIRWAYS	53,891	4.99%			
EY	ETIHAD AIRWAYS	17,903	1.65%	4,876	0.93%	
A3	AEGEAN AIRLINES	17,336	1.60%			
ET	ETHIOPIAN AIRLINES	15,565	1.44%	6,222	1.18%	150.16%
U8	TUS AIRWAYS	14,351	1.32%			
QS	SMARTWINGS	12,312	1.14%			
J2	AZERBAIJAN AIRLINES	9,857	0.91%			
WZ	RED WINGS AIRLINES	7,731	0.71%	3,557	0.67%	117.34%
H4	HISKY EUROPE SRL	7,299	0.67%			
H7	HISKY	6,280	0.58%	2,950	0.56%	112.88%
A4	AZIMUTH AIRLINES	5,803	0.53%	4,436	0.84%	30.81%
A9	GEORGIAN AIRWAYS	5,720	0.52%			
UX	AIR EUROPA	5,672	0.52%			
LIL	FLY LILI	5,334	0.49%			
CY	CYPRUS AIRWAYS	5,131	0.47%			
E2	AIR HAIFA	4,695	0.43%			
RO	TAROM - ROMANIAN AIR TRAN	4,677	0.43%			





# International Passenger Traffic

## Distribution by Airline for December

		December 2024		December 2023		
Airline		Passengers	Rate of Total	Passengers	Rate of Total	Rate of Change
LO	LOT POLISH AIRLINES	3,897	0.36%			
5F	FLYONE	3,822	0.35%			
HY	UZBEKISTAN AIR	3,368	0.31%	2,408	0.45%	39.86%
HU	HAINAN AIRLINES	2,588	0.23%	996	0.19%	159.83%
W6	WIZZAIR	2,214	0.20%			
3F	FLYONE ARMENIA LLC	1,445	0.13%			
HH	QANOT SHARQ	976	0.09%			
FB	BULGARIA AIR	481	0.04%			
	OTHERS	2,477	0.22%	1,680	0.32%	47.44%
	<b>TOTAL</b>	<b>1,079,330</b>		<b>523,977</b>		<b>105.98%</b>







# Int'l Accumulated Passenger Traffic

## Distribution by Airline

		Accumulated 2024		Accumulated 2023		
Airline		Passengers	Rate of Total	Passengers	Rate of Total	Rate of Change
LY	EL AL ISRAEL AIRLINES	6,590,451	47.48%	5,539,127	26.26%	18.97%
6H	ISRAIR AIRLINES	1,468,799	10.58%	1,003,654	4.75%	46.34%
IZ	ARKIA ISRAELI AIRLINES	1,040,067	7.49%	723,998	3.43%	43.65%
W6	WIZZAIR	640,027	4.61%	1,998,168	9.47%	-67.96%
FZ	FLYDUBAI	551,274	3.97%	285,593	1.35%	93.02%
BZ	BLUE BIRD AIRWAYS	525,452	3.78%	425,166	2.01%	23.58%
A3	AEGEAN AIRLINES	258,502	1.86%	367,884	1.74%	-29.73%
U8	TUS AIRWAYS	202,435	1.45%	184,370	0.87%	9.79%
ET	ETHIOPIAN AIRLINES	165,779	1.19%	131,619	0.62%	25.95%
LH	LUFTHANSA	150,588	1.08%	440,612	2.08%	-65.82%
OS	AUSTRIAN AIRLINES	132,573	0.95%	212,574	1.00%	-37.63%
XR	CORENDON EUROPE	120,812	0.87%	34,088	0.16%	
AF	AIR FRANCE	118,641	0.85%	260,553	1.23%	-54.46%
QS	SMARTWINGS	116,722	0.84%	79,417	0.37%	46.97%
WZ	RED WINGS AIRLINES	104,289	0.75%	60,811	0.28%	71.49%
EY	ETIHAD AIRWAYS	100,695	0.72%	106,623	0.50%	-5.55%
UX	AIR EUROPA	97,264	0.70%	138,379	0.65%	-29.71%
UA	UNITED AIRLINES	79,436	0.57%	605,753	2.87%	-86.88%
TO	TRANSAVIA FRANCE	77,606	0.55%	261,436	1.23%	-70.31%
FR	RYANAIR	77,073	0.55%	1,147,880	5.44%	-93.28%
LO	LOT POLISH AIRLINES	76,481	0.55%	217,783	1.03%	-64.88%





# Int'l Accumulated Passenger Traffic

## Distribution by Airline

		Accumulated 2024		Accumulated 2023		
Airline		Passengers	Rate of Total	Passengers	Rate of Total	Rate of Change
LX	SWISS INT'L AIRLINES	75,546	0.54%	172,454	0.81%	-56.19%
J2	AZERBAIJAN AIRLINES	74,231	0.53%	56,934	0.26%	30.38%
H7	HISKY	66,092	0.47%	53,145	0.25%	24.36%
A4	AZIMUTH AIRLINES	63,523	0.45%	71,956	0.34%	-11.71%
AZ	ITALIA TRASPORTO AEREO	58,924	0.42%	182,187	0.86%	-67.65%
NO	NEOS	54,781	0.39%	74,145	0.35%	-26.11%
H4	HISKY EUROPE SRL	52,083	0.37%	72,988	0.34%	-28.64%
HY	UZBEKISTAN AIR	49,541	0.35%	46,355	0.21%	6.87%
RO	TAROM - ROMANIAN AIR TRAN	46,983	0.33%	59,626	0.28%	-21.20%
BA	BRITISH AIRWAYS PLC	45,896	0.33%	232,191	1.10%	-80.23%
CY	CYPRUS AIRWAYS	44,275	0.31%	72,424	0.34%	-38.86%
I2	IBERIA EXPRESS	43,742	0.31%	150,545	0.71%	-70.94%
5F	FLYONE	42,675	0.30%	26,041	0.12%	63.87%
FB	BULGARIA AIR	42,636	0.30%	56,343	0.26%	-24.32%
LV	AIRZENA	34,063	0.24%			
AI	AIR INDIA	31,254	0.22%	64,220	0.30%	-51.33%
HU	HAINAN AIRLINES	31,199	0.22%	37,892	0.17%	-17.66%
G2	GULLIVAIR	30,063	0.21%	227		
DL	DELTA AIRLINES	28,858	0.20%	290,866	1.37%	-90.07%
SN	BRUSSELS AIRLINES	23,739	0.17%	138,497	0.65%	-82.85%
KL	K.L.M.	23,619	0.17%	116,185	0.55%	-79.67%





# Int'l Accumulated Passenger Traffic

## Distribution by Airline

		Accumulated 2024		Accumulated 2023		
Airline		Passengers	Rate of Total	Passengers	Rate of Total	Rate of Change
A9	GEORGIAN AIRWAYS	22,291	0.16%	74,098	0.35%	-69.91%
E2	AIR HAIFA	17,189	0.12%			
EW	EUROWINGS	15,414	0.11%			
OE	FLYONE ROMANIA	12,437	0.08%			
E8	BEES AIRLINES ROMANIA	11,551	0.08%			
LIL	FLY LILI	11,309	0.08%	6,317	0.02%	79.02%
HM	AIR SEYCHELLES	10,535	0.07%	21,413	0.10%	-50.80%
3E	ELECTRA AIRWAYS	10,477	0.07%	4,300	0.02%	143.65%
EZY	EASYJET	10,361	0.07%	658,601	3.12%	-98.42%
BT	AIR BALTIC	9,750	0.07%	27,145	0.12%	-64.08%
HH	QANOT SHARQ	8,879	0.06%	6,743	0.03%	31.67%
VY	VUELING AIRLINES S.A.	7,434	0.05%	72,118	0.34%	-89.69%
2D	EASTERN AIR LINES INC.	5,722	0.04%			
OU	CROATIA AIR	5,640	0.04%	14,333	0.06%	-60.65%
BUC	EUROPEAN AIR CHARTER	4,030	0.02%	19,871	0.09%	-79.71%
3F	FLYONE ARMENIA LLC	3,268	0.02%	7,023	0.03%	-53.46%
	OTHERS	54,514	0.39%	3,979,080	18.86%	-98.62%
TOTAL		13,879,490		21,091,751		-34.19%





# International Passenger Traffic

## Distribution by Israeli Airlines for December

		December 2024		December 2023		
	Airlines	Passengers	Rate of Total	Passengers	Rate of Total	Rate of Change
LY	EL AL ISRAEL AIRLINES	550,467	51.00%	415,524	79.30%	32.47%
6H	ISRAIR AIRLINES	142,322	13.18%	53,280	10.16%	167.12%
IZ	ARKIA ISRAELI AIRLINES	102,784	9.52%	11,226	2.14%	
E2	AIR HAIFA	4,695	0.43%			
	OTHERS	841	0.07%	275	0.05%	
	<b>TOTAL</b>	<b>801,109</b>	<b>74.22%</b>	<b>480,305</b>	<b>91.66%</b>	<b>66.79%</b>

# Int'l Accumulated Passenger Traffic

## Distribution by Israeli Airlines

		Accumulated 2024		Accumulated 2023		
	Airlines	Passengers	Rate of Total	Passengers	Rate of Total	Rate of Change
LY	EL AL ISRAEL AIRLINES	6,590,451	47.48%	5,539,127	26.26%	18.97%
6H	ISRAIR AIRLINES	1,468,799	10.58%	1,003,654	4.75%	46.34%
IZ	ARKIA ISRAELI AIRLINES	1,040,067	7.49%	723,998	3.43%	43.65%
E2	AIR HAIFA	17,189	0.12%			
	OTHERS	20,865	0.15%	25,707	0.12%	-18.83%
	<b>TOTAL</b>	<b>9,137,371</b>	<b>65.83%</b>	<b>7,292,486</b>	<b>34.57%</b>	<b>25.29%</b>





# International Passenger Traffic

## Distribution by Countries for December

Countries	December 2024		December 2023		
	Passengers	Rate of Total	Passengers	Total of Rate	Rate of Change
UNITED ARAB EMIRATES	123,591	11.45%	27,182	5.18%	
UNITED STATES	102,427	9.48%	91,287	17.42%	12.20%
GREECE	100,841	9.34%	32,649	6.23%	
ITALY	67,845	6.28%	25,291	4.82%	168.25%
CYPRUS	65,349	6.05%	30,660	5.85%	113.14%
GEORGIA	58,352	5.40%	26,539	5.06%	119.87%
UNITED KINGDOM	58,017	5.37%	34,706	6.62%	67.16%
FRANCE	54,444	5.04%	37,668	7.18%	44.53%
HUNGARY	51,856	4.80%	15,748	3.00%	
CZECH REPUBLIC	47,578	4.40%	12,642	2.41%	
SPAIN	44,350	4.10%	20,169	3.84%	119.89%
GERMANY	44,339	4.10%	25,480	4.86%	74.01%
THAILAND	35,836	3.32%	22,570	4.30%	58.77%
POLAND	34,392	3.18%	9,572	1.82%	
ROMANIA	33,153	3.07%	12,857	2.45%	157.85%
BULGARIA	19,685	1.82%	7,090	1.35%	177.64%
RUSSIAN FEDERATION	18,542	1.71%	18,274	3.48%	1.46%
NETHERLANDS	16,932	1.56%	14,734	2.81%	14.91%
AUSTRIA	15,789	1.46%	9,389	1.79%	68.16%
MOLDOVA	15,630	1.44%	13,993	2.67%	11.69%
ETHIOPIA	15,565	1.44%	6,222	1.18%	150.16%
SWITZERLAND	15,517	1.43%	13,380	2.55%	15.97%





# International Passenger Traffic

## Distribution by Countries for December

Countries	December 2024		December 2023		
	Passengers	Rate of Total	Passengers	Total of Rate	Rate of Change
AZERBAIJAN	9,871	0.91%	1,258	0.24%	
PORTUGAL	7,891	0.73%	5,294	1.01%	49.05%
SERBIA	4,725	0.43%	2,602	0.49%	81.59%
UZBEKISTAN	4,346	0.40%	2,408	0.45%	80.48%
JAPAN	3,871	0.35%			
MONTENEGRO	3,131	0.29%			
CHINA	2,602	0.24%	1,001	0.19%	159.94%
ARMENIA	1,445	0.13%			
MADAGASKAR	672	0.06%			
OTHERS	746	0.06%	3,312	0.63%	-77.47%
<b>TOTAL</b>	<b>1,079,330</b>		<b>523,977</b>		<b>105.98%</b>







# Int'l Accumulated Passenger Traffic

## Distribution by Countries

Countries	Accumulated 2024		Accumulated 2023		
	Passengers	Rate of Total	Passengers	Rate of Total	Rate of Change
GREECE	1,825,567	13.15%	1,753,257	8.31%	4.12%
UNITED STATES	1,322,363	9.52%	2,010,552	9.53%	-34.22%
CYPRUS	1,074,868	7.74%	981,087	4.65%	9.55%
UNITED ARAB EMIRATES	891,704	6.42%	1,148,534	5.44%	-22.36%
FRANCE	856,310	6.16%	1,199,042	5.68%	-28.58%
ITALY	848,544	6.11%	1,466,320	6.95%	-42.13%
GEORGIA	695,386	5.01%	518,061	2.45%	34.22%
UNITED KINGDOM	631,866	4.55%	1,214,492	5.75%	-47.97%
GERMANY	597,159	4.30%	999,904	4.74%	-40.27%
SPAIN	581,019	4.18%	885,112	4.19%	-34.35%
HUNGARY	466,793	3.36%	577,985	2.74%	-19.23%
ROMANIA	456,222	3.28%	591,352	2.80%	-22.85%
CZECH REPUBLIC	396,747	2.85%	250,288	1.18%	58.51%
POLAND	363,766	2.62%	520,907	2.46%	-30.16%
THAILAND	357,179	2.57%	281,029	1.33%	27.09%
AUSTRIA	333,254	2.40%	554,079	2.62%	-39.85%
BULGARIA	325,541	2.34%	433,255	2.05%	-24.86%
NETHERLANDS	276,071	1.98%	487,399	2.31%	-43.35%
SWITZERLAND	265,795	1.91%	402,206	1.90%	-33.91%
RUSSIAN FEDERATION	261,745	1.88%	260,044	1.23%	0.65%
MOLDOVA	177,027	1.27%	142,565	0.67%	24.17%
ETHIOPIA	164,734	1.18%	129,039	0.61%	27.66%





# Int'l Accumulated Passenger Traffic

## Distribution by Countries

Countries	Accumulated 2024		Accumulated 2023		
	Passengers	Rate of Total	Passengers	Rate of Total	Rate of Change
MONTENEGRO	132,349	0.95%	93,855	0.44%	41.01%
PORTUGAL	116,273	0.83%	193,189	0.91%	-39.81%
AZERBAIJAN	95,729	0.68%	79,612	0.37%	20.24%
UZBEKISTAN	56,891	0.40%	53,233	0.25%	6.87%
JAPAN	48,712	0.35%	30,887	0.14%	57.71%
SERBIA	40,490	0.29%	35,632	0.16%	13.63%
INDIA	32,829	0.23%	66,701	0.31%	-50.78%
CHINA	31,411	0.22%	115,000	0.54%	-72.68%
LITHUANIA	25,327	0.18%	55,775	0.26%	-54.59%
BELGIUM	24,621	0.17%	193,490	0.91%	-87.27%
SLOVENIA	14,784	0.10%	25,445	0.12%	-41.89%
SEYCHELLES	12,498	0.09%	22,718	0.10%	-44.98%
CROATIA	11,764	0.08%	33,992	0.16%	-65.39%
TANZANIA	10,377	0.07%	16,747	0.07%	-38.03%
ARMENIA	10,237	0.07%	16,761	0.07%	-38.92%
LATVIA	9,764	0.07%	27,325	0.12%	-64.26%
SOUTH AFRICA	5,633	0.04%	45,070	0.21%	-87.50%
BOSNIA	5,447	0.03%	1		
FINLAND	4,931	0.03%	36,402	0.17%	-86.45%
SLOVAKIA	3,233	0.02%	7,581	0.03%	-57.35%
MALTA	3,181	0.02%	40,563	0.19%	-92.15%
NORWAY	2,549	0.01%	3,130	0.01%	-18.56%





# Int'l Accumulated Passenger Traffic

## Distribution by Countries

Countries	Accumulated 2024		Accumulated 2023		
	Passengers	Rate of Total	Passengers	Rate of Total	Rate of Change
SRI LANKA	2,396	0.01%	830		188.67%
OTHERS	8,404	0.06%	3,091,303	14.65%	-99.72%
<b>TOTAL</b>	<b>13,879,490</b>		<b>21,091,751</b>		<b>-34.19%</b>





# International Passenger Traffic

## Distribution by First Destination for December

Destination	December 2024		December 2023		
	Passengers	Rate of Total	Passengers	Rate of Total	Rate of Change
DUBAI	105,437	9.76%	22,168	4.23%	
ATHENS	95,332	8.83%	30,724	5.86%	
LARNACA	58,276	5.39%	30,417	5.80%	91.59%
PARIS-CHARLES DE GAULLE	52,668	4.87%	37,232	7.10%	41.45%
BUDAPEST	51,856	4.80%	15,748	3.00%	
PRAGUE-RUZYNE	47,571	4.40%	12,642	2.41%	
NEW YORK - J.F.KENNEDY	39,678	3.67%	38,060	7.26%	4.25%
ROME - FIUMICINO	39,419	3.65%	13,447	2.56%	193.14%
BUCHAREST - OTOPENI	32,748	3.03%	12,844	2.45%	154.96%
TBILISI	30,664	2.84%	17,160	3.27%	78.69%
LUTON	28,507	2.64%	9,949	1.89%	186.53%
BANGKOK INTL.-SUARNABHUM	28,274	2.61%	22,570	4.30%	25.27%
NEW YORK - NEWARK	27,642	2.56%	27,034	5.15%	2.24%
LONDON - HEATHROW	26,918	2.49%	24,728	4.71%	8.85%
BATUMI	26,611	2.46%	9,379	1.78%	183.72%
BERLIN BRANDENBURG INTL	26,273	2.43%	10,977	2.09%	139.34%
BARCELONA	24,868	2.30%	8,837	1.68%	181.40%
MILAN-MALPENSA	24,411	2.26%	11,822	2.25%	106.48%
WARSAW	21,937	2.03%	5,767	1.10%	
MADRID	19,357	1.79%	11,205	2.13%	72.75%
ABU DHABI	17,945	1.66%	4,894	0.93%	
SOFIA	17,117	1.58%	5,213	0.99%	





# International Passenger Traffic

## Distribution by First Destination for December

Destination	December 2024		December 2023		
	Passengers	Rate of Total	Passengers	Rate of Total	Rate of Change
AMSTERDAM	16,932	1.56%	14,734	2.81%	14.91%
VIENNA	15,777	1.46%	9,389	1.79%	68.03%
CHISINAU	15,630	1.44%	13,993	2.67%	11.69%
ADDIS ABABA	15,565	1.44%	6,222	1.18%	150.16%
LOS ANGELES	14,613	1.35%	9,762	1.86%	49.69%
ZURICH	11,096	1.02%	9,525	1.81%	16.49%
BAKU HEYDAR ALIYEV INT'L	9,871	0.91%	1,258	0.24%	
MIAMI INTERNATIONAL	9,555	0.88%	11,669	2.22%	-18.11%
FRANKFURT	9,416	0.87%	10,622	2.02%	-11.35%
MUNICH	8,397	0.77%	3,863	0.73%	117.36%
LISBON	7,874	0.72%	5,287	1.00%	48.93%
SOCHI	7,662	0.70%	7,993	1.52%	-4.14%
PHUKET	7,521	0.69%			
KRAKOW	7,419	0.68%	3,805	0.72%	94.98%
PAPHOS	7,063	0.65%	133	0.02%	
BOSTON-LOGAN INT	6,246	0.57%	4,707	0.89%	32.69%
MOSCOW-DOMODEDOVO	6,196	0.57%	10,246	1.95%	-39.52%
THESSALONIKI	5,490	0.50%	1,870	0.35%	193.58%
KATOWICE	5,036	0.46%			
BELGRADE	4,725	0.43%	2,602	0.49%	81.59%
MOSCOW-ZHUKOVSKY INTL AIR	4,662	0.43%			
FORT LAUDERDALE	4,630	0.42%	6		





# International Passenger Traffic

## Distribution by First Destination for December

Destination	December 2024		December 2023		
	Passengers	Rate of Total	Passengers	Rate of Total	Rate of Change
GENEVA	4,389	0.40%	3,809	0.72%	15.22%
TOKYO INTL.-NARITA	3,871	0.35%			
TASHKENT	3,639	0.33%	2,408	0.45%	51.12%
PODGORICA	3,125	0.28%			
VENICE	2,825	0.26%	2		
SHENZHEN BAOAN INT.	2,588	0.23%	996	0.19%	159.83%
VARNA	2,568	0.23%	1,877	0.35%	36.81%
MANCHESTER	2,498	0.23%			
YEREVAN	1,445	0.13%			
VILLAFRANCA-VERONA	1,157	0.10%			
LYON - SATOLAS	1,112	0.10%			
KUTAISI	1,077	0.09%			
SAMARKAND	707	0.06%			
FASCENE	672	0.06%			
GRENOBLE-SAUNT GEOIRS	559	0.05%	341	0.06%	63.92%
SUCEAVA-ROMANIA	362	0.03%	13		
DUSSELDORF	218	0.02%			
OTHERS	1,633	0.15%	4,028	0.76%	-59.45%
<b>TOTAL</b>	<b>1,079,330</b>		<b>523,977</b>		<b>105.98%</b>







# Int'l Accumulated Passenger Traffic

## Distribution by First Destination

Destination	Accumulated 2024		Accumulated 2023		
	Passengers	Rate of Total	Passengers	Rate of Total	Rate of Change
ATHENS	973,630	7.01%	788,929	3.74%	23.41%
LARNACA	863,292	6.21%	676,190	3.20%	27.67%
DUBAI	753,611	5.42%	917,857	4.35%	-17.89%
PARIS-CHARLES DE GAULLE	658,271	4.74%	774,466	3.67%	-15.00%
NEW YORK - J.F.KENNEDY	529,596	3.81%	641,200	3.04%	-17.40%
BUDAPEST	464,090	3.34%	543,868	2.57%	-14.66%
BUCHAREST - OTOPENI	412,194	2.96%	473,689	2.24%	-12.98%
ROME - FIUMICINO	410,871	2.96%	581,448	2.75%	-29.33%
PRAGUE-RUZYNE	395,553	2.84%	250,150	1.18%	58.12%
NEW YORK - NEWARK	384,819	2.77%	606,971	2.87%	-36.60%
LONDON - HEATHROW	377,041	2.71%	688,755	3.26%	-45.25%
TBILISI	349,619	2.51%	296,874	1.40%	17.76%
BATUMI	344,367	2.48%	220,036	1.04%	56.50%
VIENNA	314,872	2.26%	537,323	2.54%	-41.39%
MADRID	305,762	2.20%	498,612	2.36%	-38.67%
MILAN-MALPENSA	285,829	2.05%	361,464	1.71%	-20.92%
BANGKOK INTL.-SUARNABHUM	285,228	2.05%	221,651	1.05%	28.68%
RHODES-PARADISI	284,606	2.05%	282,541	1.33%	0.73%
AMSTERDAM	276,021	1.98%	486,713	2.30%	-43.28%
BARCELONA	265,970	1.91%	365,519	1.73%	-27.23%
LUTON	235,996	1.70%	376,148	1.78%	-37.25%
HERAKLION	233,327	1.68%	269,065	1.27%	-13.28%





# Int'l Accumulated Passenger Traffic

## Distribution by First Destination

Destination	Accumulated 2024		Accumulated 2023		
	Passengers	Rate of Total	Passengers	Rate of Total	Rate of Change
WARSAW	233,123	1.67%	313,780	1.48%	-25.70%
ZURICH	214,954	1.54%	274,179	1.29%	-21.60%
PAPHOS	211,338	1.52%	304,344	1.44%	-30.55%
BERLIN BRANDENBURG INTL	200,407	1.44%	312,175	1.48%	-35.80%
FRANKFURT	193,830	1.39%	349,700	1.65%	-44.57%
SOFIA	178,134	1.28%	249,340	1.18%	-28.55%
MUNICH	178,078	1.28%	259,926	1.23%	-31.48%
CHISINAU	177,027	1.27%	142,565	0.67%	24.17%
LOS ANGELES	169,424	1.22%	126,720	0.60%	33.69%
ADDIS ABABA	164,734	1.18%	129,039	0.61%	27.66%
MOSCOW-DOMODEDOVO	156,188	1.12%	133,833	0.63%	16.70%
ABU DHABI	134,989	0.97%	226,248	1.07%	-40.33%
MIAMI INTERNATIONAL	128,812	0.92%	160,002	0.75%	-19.49%
THESSALONIKI	115,365	0.83%	166,102	0.78%	-30.54%
TIVAT	111,769	0.80%	60,378	0.28%	85.11%
LISBON	98,207	0.70%	168,993	0.80%	-41.88%
KRAKOW	97,111	0.69%	141,908	0.67%	-31.56%
BAKU HEYDAR ALIYEV INT'L	95,717	0.68%	79,612	0.37%	20.22%
SOCHI	93,636	0.67%	57,093	0.27%	64.00%
BURGAS	83,012	0.59%	89,804	0.42%	-7.56%
BOSTON-LOGAN INT	76,322	0.54%	98,023	0.46%	-22.13%
PARIS-ORLY	76,211	0.54%	230,482	1.09%	-66.93%





# Int'l Accumulated Passenger Traffic

## Distribution by First Destination

Destination	Accumulated 2024		Accumulated 2023		
	Passengers	Rate of Total	Passengers	Rate of Total	Rate of Change
PHUKET	71,844	0.51%	59,063	0.28%	21.63%
VARNA	64,391	0.46%	85,146	0.40%	-24.37%
CORFU	61,042	0.43%	50,129	0.23%	21.76%
GENEVA	50,082	0.36%	94,339	0.44%	-46.91%
VILAFRANCA-VERONA	49,484	0.35%	42,809	0.20%	15.59%
TOKYO INTL.-NARITA	48,709	0.35%	30,873	0.14%	57.77%
MARSEILLE	48,414	0.34%	57,323	0.27%	-15.54%
VENICE	45,998	0.33%	92,755	0.43%	-50.40%
NICE	45,736	0.32%	72,949	0.34%	-37.30%
TASHKENT	45,625	0.32%	47,001	0.22%	-2.92%
BELGRADE	40,490	0.29%	35,632	0.16%	13.63%
MIKONOS	35,801	0.25%	48,845	0.23%	-26.70%
DELHI	32,811	0.23%	65,284	0.30%	-49.74%
FORT LAUDERDALE	32,017	0.23%	2,478	0.01%	
SHENZHEN BAOAN INT.	31,199	0.22%	5,375	0.02%	
KOS	27,995	0.20%	34,167	0.16%	-18.06%
KATOWICE	27,674	0.19%	50,759	0.24%	-45.47%
BRUSSELS	24,109	0.17%	141,267	0.66%	-82.93%
CATANIA FONTANAROSSA	22,518	0.16%	57,674	0.27%	-60.95%
BACAU	22,332	0.16%			
VILNIUS INTL	21,341	0.15%	55,399	0.26%	-61.47%
PODGORICA	20,574	0.14%	33,477	0.15%	-38.54%





# Int'l Accumulated Passenger Traffic

## Distribution by First Destination

Destination	Accumulated 2024		Accumulated 2023		
	Passengers	Rate of Total	Passengers	Rate of Total	Rate of Change
DUSSELDORF	19,513	0.14%	16,601	0.07%	17.54%
SANTORINI	19,085	0.13%	18,549	0.08%	2.88%
GRENOBLE-SAUNT GEOIRS	18,984	0.13%	29,224	0.13%	-35.03%
PORTO	18,043	0.12%	22,760	0.10%	-20.72%
SALZBURG	15,648	0.11%	10,546	0.05%	48.37%
NAPLES-CAPODICHINO	15,105	0.10%	146,446	0.69%	-89.68%
LJUBLJANA	14,784	0.10%	25,445	0.12%	-41.89%
KEFALLINIA	13,680	0.09%	56		
SITIA	13,345	0.09%			
MAHE SEYCHELLES INTL	12,498	0.09%	22,718	0.10%	-44.98%
LONDON - GATWICK	12,091	0.08%	111,163	0.52%	-89.12%
PREVEZA	11,756	0.08%	13,874	0.06%	-15.26%
SAMARKAND	11,266	0.08%	6,204	0.02%	81.59%
KHANIA-SOUDABAY	10,810	0.07%	37,537	0.17%	-71.20%
BERGAMO	10,362	0.07%	87,190	0.41%	-88.11%
YEREVAN	10,237	0.07%	16,761	0.07%	-38.92%
SUCEAVA-ROMANIA	9,874	0.07%	6,156	0.02%	60.39%
RIGA	9,764	0.07%	27,325	0.12%	-64.26%
IASI	9,039	0.06%	44,694	0.21%	-79.77%
ZAGREB	8,726	0.06%	27,668	0.13%	-68.46%
PATRAS ARAXOS	8,443	0.06%	13,723	0.06%	-38.47%
ZANZIBAR	8,428	0.06%	11,935	0.05%	-29.38%





# Int'l Accumulated Passenger Traffic

## Distribution by First Destination

Destination	Accumulated 2024		Accumulated 2023		
	Passengers	Rate of Total	Passengers	Rate of Total	Rate of Change
MOSCOW-ZHUKOVSKY INTL AIR	8,255	0.05%	6,805	0.03%	21.30%
MALAGA	8,095	0.05%	7,407	0.03%	9.28%
MITILINI	7,814	0.05%	76		
KARPATOS	7,425	0.05%	8,273	0.03%	-10.25%
BARI -PALESE MACCHIE	6,218	0.04%	22,449	0.10%	-72.30%
MANCHESTER	5,726	0.04%	36,717	0.17%	-84.40%
RZESZOW-JASIONKA	5,683	0.04%	4,488	0.02%	26.62%
JOHANNESBURG	5,633	0.04%	45,056	0.21%	-87.49%
SARAJEVO	5,447	0.03%	1		
ROVANIEMI	4,924	0.03%	10,281	0.04%	-52.10%
KAUNAS	3,986	0.02%	376		
MULHOUSE	3,769	0.02%			
LYON - SATOLAS	3,715	0.02%	31,371	0.14%	-88.15%
ST. PETERSBURG	3,387	0.02%	83		
MALTA	3,181	0.02%	40,563	0.19%	-92.15%
PIESTANY	2,953	0.02%	2,941	0.01%	0.40%
INNSBRUCK	2,725	0.01%	6,200	0.02%	-56.04%
DEBRECEN	2,703	0.01%	34,117	0.16%	-92.07%
ZADAR	2,559	0.01%	11		
DUBAI AL MAKTOUM INT AP	2,539	0.01%	1,399		81.48%
COLOMBO-KATUNAYAKE	2,396	0.01%	830		188.67%
BADEN BADEN	2,055	0.01%	28,026	0.13%	-92.66%





# Int'l Accumulated Passenger Traffic

## Distribution by First Destination

Destination	Accumulated 2024		Accumulated 2023		
	Passengers	Rate of Total	Passengers	Rate of Total	Rate of Change
MEMMINGEN	2,020	0.01%	28,062	0.13%	-92.80%
OTHERS	31,662	0.22%	3,983,171	18.88%	-99.20%
<b>TOTAL</b>	<b>13,879,490</b>		<b>21,091,751</b>		<b>-34.19%</b>





# Cargo Activity







# Cargo Handling

## Distribution by Transporter

Transporter	December 2024 (Ton)	December 2023 (Ton)	Rate of Change
Cargo on Passenger Aircrafts - Incoming	3,438	3,077	11.73%
Cargo on Passenger Aircrafts - Outgoing	4,126	3,614	14.16%
<b>Total Cargo on Passenger Aircrafts</b>	<b>7,564</b>	<b>6,691</b>	<b>13.04%</b>
Cargo on Cargo Aircrafts - Incoming	18,166	15,139	19.99%
Cargo on Cargo Aircrafts - Outgoing	7,479	6,079	23.03%
<b>Total Cargo on Cargo Aircrafts</b>	<b>25,645</b>	<b>21,218</b>	<b>20.86%</b>
<b>Total</b>	<b>33,209</b>	<b>27,909</b>	<b>18.99%</b>

## Distribution by Months

Month	2024 (ton)			2023 (ton)			Rate of Change
	Cargo	Mail	Total	Cargo	Mail	Total	
January	26,619	580	27,200	28,684	635	29,320	-7.23%
February	26,737	441	27,178	28,279	561	28,841	-5.76%
March	29,890	402	30,291	32,972	745	33,717	-10.16%
April	27,296	427	27,723	27,461	626	28,086	-1.29%
May	27,702	524	28,226	29,346	653	29,999	-5.91%
June	27,477	389	27,866	27,858	562	28,419	-1.94%
July	30,216	435	30,651	28,987	548	29,536	3.77%
August	27,787	342	28,130	30,413	575	30,988	-9.22%
September	28,867	416	29,284	28,104	524	28,628	2.29%
October	26,562	322	26,884	22,974	352	23,327	15.24%
November	30,622	442	31,064	24,361	488	24,850	25.00%
December	32,801	408	33,209	27,413	497	27,909	18.99%
<b>Total</b>	<b>342,576</b>	<b>5,128</b>	<b>347,706</b>	<b>336,852</b>	<b>6,766</b>	<b>343,620</b>	<b>1.18%</b>





# Cargo Handling on Passenger Aircrafts

## Distribution by Airline for December

December 2024					December 2023					
Airline		Incoming Cargo (Ton)	Outgoing Cargo (Ton)	Cargo (Ton)	Rate of Total	Incoming Cargo (Ton)	Outgoing Cargo (Ton)	Cargo (Ton)	Rate of Total	Rate of Change
LY	EL AL ISRAEL AIRLINES	2,551	3,629	6,180	81.70%	2,772	3,377	6,149	91.89%	0.50%
HU	HAINAN AIRLINES	334	145	478	6.31%	203	88	291	4.34%	64.26%
FZ	FLYDUBAI	112	40	152	2.00%	30	28	57	0.85%	166.66%
UX	AIR EUROPA	83	45	128	1.69%					
ET	ETHIOPIAN AIRLINES	55	33	88	1.16%	5	7	12	0.17%	
HY	UZBEKISTAN AIR	45	32	77	1.01%	31	39	70	1.04%	10.00%
EY	ETIHAD AIRWAYS	49	20	69	0.91%	15	6	21	0.31%	
IZ	ARKIA ISRAELI AIRLINES	38	9	47	0.62%		20	20	0.29%	135.00%
C6	CENTRUM AIR		47	47	0.62%					
J2	AZERBAIJAN AIRLINES	30	17	46	0.60%					
NCR	NATIONAL AIRLINES		40	40	0.52%		25	25	0.37%	60.00%
QS	SMARTWINGS	32	2	34	0.44%					
GH	GEORGIAN AIRLINES		25	25	0.33%		3	3	0.04%	
RO	TAROM - ROMANIAN AIR TRAN	19	5	24	0.31%					
H4	HISKY EUROPE SRL	19	3	22	0.29%					
WZ	RED WINGS AIRLINES	12	10	22	0.29%	2		2	0.02%	
5F	FLYONE	11	8	20	0.26%					
H7	HISKY	10	7	17	0.22%	9	6	15	0.22%	13.33%
A3	AEGEAN AIRLINES	13	2	15	0.19%					
A4	AZIMUTH AIRLINES	8	4	12	0.15%	8		8	0.11%	50.00%
U8	TUS AIRWAYS	7	2	8	0.10%					
CY	CYPRUS AIRWAYS	4		5	0.06%					





# Cargo Handling on Passenger Aircrafts

## Distribution by Airline for December

December 2024					December 2023				
Airline	Incoming Cargo (Ton)	Outgoing Cargo (Ton)	Cargo (Ton)	Rate of Total	Incoming Cargo (Ton)	Outgoing Cargo (Ton)	Cargo (Ton)	Rate of Total	Rate of Change
LO LOT POLISH AIRLINES	2	1	3	0.03%					
HH QANOT SHARQ	3		3	0.03%					
6H ISRAIR AIRLINES		3	3	0.03%	2	6	8	0.11%	-62.50%
TOTAL	3,438	4,126	7,564		3,077	3,614	6,691		13.04%





# Accumulated Cargo Handling on Passengers Aircrafts

## Distribution by Airline

Accumulated 2024					Accumulated 2023					
Airline		Incoming Cargo (Ton)	Outgoing Cargo (Ton)	Cargo (Ton)	Rate of Total	Incoming Cargo (Ton)	Outgoing Cargo (Ton)	Cargo (Ton)	Rate of Total	Rate of Change
LY	EL AL ISRAEL AIRLINES	30,215	38,572	68,787	72.43%	26,566	29,405	55,971	37.00%	22.89%
AF	AIR FRANCE	2,408	2,151	4,559	4.80%	4,665	2,811	7,476	4.94%	-39.01%
HU	HAINAN AIRLINES	2,889	1,414	4,303	4.53%	2,591	1,000	3,591	2.37%	19.82%
UX	AIR EUROPA	2,170	1,000	3,171	3.33%	2,680	824	3,504	2.31%	-9.50%
UA	UNITED AIRLINES	1,035	1,121	2,156	2.27%	8,045	8,014	16,059	10.61%	-86.57%
FZ	FLYDUBAI	1,400	295	1,695	1.78%	896	211	1,106	0.73%	53.25%
LX	SWISS INT'L AIRLINES	777	734	1,512	1.59%	538	364	903	0.59%	67.44%
HY	UZBEKISTAN AIR	653	430	1,083	1.14%	226	257	483	0.31%	124.22%
ET	ETHIOPIAN AIRLINES	543	330	873	0.91%	857	307	1,164	0.76%	-25.00%
AI	AIR INDIA	393	353	745	0.78%	700	448	1,148	0.75%	-35.10%
EY	ETIHAD AIRWAYS	363	323	686	0.72%	1,346	534	1,879	1.24%	-63.49%
FX	FEDERAL EXPRESS	470	190	660	0.69%	9	2	12		
A3	AEGEAN AIRLINES	426	61	488	0.51%	411	169	580	0.38%	-15.86%
DL	DELTA AIRLINES	243	240	483	0.50%	2,564	2,075	4,639	3.06%	-89.58%
QS	SMARTWINGS	303	42	346	0.36%	118	16	134	0.08%	158.20%
NC R	NATIONAL AIRLINES		290	290	0.30%	14	69	83	0.05%	
LH	LUFTHANSA	177	66	243	0.25%	442	325	767	0.50%	-68.31%
J2	AZERBAIJAN AIRLINES	153	84	237	0.24%	90	13	104	0.06%	127.88%
RO	TAROM - ROMANIAN AIR TRAN	179	44	223	0.23%	111	32	142	0.09%	57.04%
LO	LOT POLISH AIRLINES	151	57	208	0.21%	339	80	419	0.27%	-50.35%
AZ	ITALIA TRASPORTO AEREO	113	77	191	0.20%	327	179	506	0.33%	-62.25%
H7	HISKY	109	62	171	0.18%	27	14	41	0.02%	





# Accumulated Cargo Handling on Passengers Aircrafts

## Distribution by Airline

Accumulated 2024					Accumulated 2023					
Airline		Incoming Cargo (Ton)	Outgoing Cargo (Ton)	Cargo (Ton)	Rate of Total	Incoming Cargo (Ton)	Outgoing Cargo (Ton)	Cargo (Ton)	Rate of Total	Rate of Change
U8	TUS AIRWAYS	140	28	168	0.17%	144	19	163	0.10%	3.06%
WZ	RED WINGS AIRLINES	66	93	159	0.16%	27	43	70	0.04%	127.14%
H4	HISKY EUROPE SRL	129	20	149	0.15%					
OS	AUSTRIAN AIRLINES	124	19	144	0.15%	133	60	193	0.12%	-25.38%
A4	AZIMUTH AIRLINES	125	18	143	0.15%	23	7	30	0.01%	
C6	CENTRUM AIR		126	126	0.13%					
5F	FLYONE	82	35	118	0.12%	48	12	60	0.03%	96.66%
I2	IBERIA EXPRESS	32	60	92	0.09%	119	98	217	0.14%	-57.60%
IZ	ARKIA ISRAELI AIRLINES	73	18	91	0.09%	3	42	45	0.02%	102.22%
GH	GEORGIAN AIRLINES		86	86	0.09%		3	3		
BA	BRITISH AIRWAYS PLC		78	78	0.08%	3,146	1,384	4,530	2.99%	-98.27%
5Y	ATLAS AIR Inc.		77	77	0.08%		128	128	0.08%	-39.84%
HM	AIR SEYCHELLES	64		65	0.06%	86	1	88	0.05%	-26.13%
CY	CYPRUS AIRWAYS	58	3	61	0.06%	14	6	20	0.01%	
RD	EASY CHARTER LLC		56	56	0.05%		5	5		
6H	ISRAIR AIRLINES	4	46	51	0.05%	2	25	27	0.01%	88.88%
BT	AIR BALTIC	38	7	45	0.04%	87	23	110	0.07%	-59.09%
AC	AIR CANADA	7	19	25	0.02%	2,966	3,099	6,065	4.00%	-99.58%
KL	K.L.M.	2	14	16	0.01%	1,540	672	2,212	1.46%	-99.27%
FB	BULGARIA AIR	15		15	0.01%	24	13	36	0.02%	-58.33%
QY	EUROPEAN AIR TRANSPORT	6	7	13	0.01%	11	32	43	0.02%	-69.76%
ZS	SOLINAIR		13	13	0.01%					





# Accumulated Cargo Handling on Passengers Aircrafts

## Distribution by Airline

Accumulated 2024					Accumulated 2023				
Airline	Incoming Cargo (Ton)	Outgoing Cargo (Ton)	Cargo (Ton)	Rate of Total	Incoming Cargo (Ton)	Outgoing Cargo (Ton)	Cargo (Ton)	Rate of Total	Rate of Change
8V ASTRAL AVIATION		11	11	0.01%		21	21	0.01%	-47.61%
KLJ KLASJET	10		10	0.01%					
SN BRUSSELS AIRLINES	7	3	10	0.01%	219	21	240	0.15%	-95.83%
MJ MYWAY AIRLINES	1	7	9			3	3		200.00%
BZ BLUE BIRD AIRWAYS	5		5		1		1		
3V ASL AIRLINES BELGIUM		5	5						
HH QANOT SHARQ	3		3						
JAG ALPHA SKY LCC		3	3						
3F FLYONE ARMENIA LLC	1		1						
GW GETJET AIRLINES		1	1						
LV AIRZENA		1	1						
<b>TOTAL</b>	<b>46,167</b>	<b>48,795</b>	<b>94,961</b>		<b>85,891</b>	<b>65,363</b>	<b>151,252</b>		<b>-37.21%</b>





# Cargo Handling on Cargo Aircrafts

## Distribution by Airlines December

December 2024						December 2023				
Airline		Incoming Cargo (Ton)	Outgoing Cargo (Ton)	Cargo (Ton)	Rate of Total	Incoming Cargo (Ton)	Outgoing Cargo (Ton)	Cargo (Ton)	Rate of Total	Rate of Change
ICL	C.A.L ISRAELI CARGO	6,053	2,210	8,263	32.22%	4,353	1,292	5,645	26.60%	46.37%
QY	EUROPEAN AIR TRANSPORT	1,951	1,408	3,359	13.09%	1,611	1,457	3,068	14.45%	9.48%
AZG	SILK WAY WEST AIRLINES	2,089	1,116	3,206	12.50%	2,904	908	3,812	17.96%	-15.89%
C6	CENTRUM AIR	2,902	205	3,106	12.11%					
LY	EL AL ISRAEL AIRLINES	1,449	953	2,403	9.37%	1,514	1,151	2,665	12.56%	-9.83%
NCR	NATIONAL AIRLINES	868	225	1,093	4.26%	1,667	26	1,693	7.97%	-35.44%
RD	EASY CHARTER LLC	528	330	858	3.34%	333	12	346	1.63%	147.97 %
FX	FEDERAL EXPRESS	512	223	735	2.86%					
WT	SWIFT AIR	390	298	688	2.68%					
ABR	ASL Airlines (Ireland) Li	378	301	678	2.64%	285	256	541	2.54%	25.32%
GH	GEORGIAN AIRLINES	414	3	417	1.62%	73		73	0.34%	
PVV	FLY PRO	298	35	333	1.29%					
ET	ETHIOPIAN AIRLINES	175	106	281	1.09%	83	90	172	0.81%	63.37%
M4	POSTE AIR CARGO	51	26	77	0.30%					
HY	UZBEKISTAN AIR	50		50	0.19%					
IGA	SKY TAXI	37		37	0.14%	287	277	565	2.66%	-93.45%
MJ	MYWAY AIRLINES	17	8	25	0.09%	58		58	0.27%	-56.89%
AZQ	SILK WAY AIRLINES		15	15	0.05%		19	19	0.08%	-21.05%
	OTHERS	5	15	20	0.07%	1,971	591	2,562	12.07%	-99.21%
	TOTAL	18,166	7,479	25,645		15,139	6,079	21,218		20.86%







# Accumulated Cargo Handling on Cargo Aircrafts

## Distribution by Airline

Accumulated 2024					Accumulated 2023					
Airline		Incoming Cargo (Ton)	Outgoing Cargo (Ton)	Cargo (Ton)	Rate of Total	Incoming Cargo (Ton)	Outgoing Cargo (Ton)	Cargo (Ton)	Rate of Total	Rate of Change
ICL	C.A.L ISRAELI CARGO	60,161	21,149	81,310	32.17%	43,484	16,188	59,672	31.01%	36.26%
QY	EUROPEAN AIR TRANSPORT	19,917	17,004	36,921	14.60%	16,975	12,566	29,541	15.35%	24.98%
AZG	SILK WAY WEST AIRLINES	16,095	10,204	26,299	10.40%	9,169	8,092	17,261	8.97%	52.36%
LY	EL AL ISRAEL AIRLINES	11,879	8,024	19,903	7.87%	6,159	3,832	9,991	5.19%	99.20%
C6	CENTRUM AIR	15,615	1,102	16,718	6.61%					
NCR	NATIONAL AIRLINES	11,017	832	11,849	4.68%	2,540	79	2,619	1.36%	
FX	FEDERAL EXPRESS	6,625	3,605	10,230	4.04%	6,248	3,344	9,592	4.98%	6.65%
LH	LUFTHANSA	4,575	3,667	8,242	3.26%	4,445	3,884	8,329	4.32%	-1.04%
RD	EASY CHARTER LLC	5,956	1,421	7,377	2.91%	528	64	592	0.30%	
ABR	ASL Airlines (Ireland) Li	3,525	2,920	6,444	2.54%	536	487	1,024	0.53%	
3V	ASL AIRLINES BELGIUM	4,409	1,834	6,243	2.47%	44		44	0.02%	
MNB	MNG CARGO AIRLINES	5,122	720	5,842	2.31%	16,345	2,483	18,828	9.78%	-68.97%
ET	ETHIOPIAN AIRLINES	1,659	872	2,531	1.00%	923	370	1,294	0.67%	95.59%
ABD	ATLANTA ICELANDIC	2,278	1	2,279	0.90%	543	218	761	0.39%	199.47%
IGA	SKY TAXI	1,319	241	1,560	0.61%	1,081	889	1,970	1.02%	-20.81%
GH	GEORGIAN AIRLINES	1,370	3	1,372	0.54%	73		73	0.03%	
8V	ASTRAL AVIATION	1,124	1	1,125	0.44%	499	66	565	0.29%	99.11%
M4	POSTE AIR CARGO	750	351	1,101	0.43%	690	287	977	0.50%	12.69%
5Y	ATLAS AIR Inc.	951	29	980	0.38%	777	4	782	0.40%	25.31%
WT	SWIFT AIR	485	381	866	0.34%					
5O	ASL AIRLINES	403	331	734	0.29%	146	120	266	0.13%	175.93%
HY	UZBEKISTAN AIR	719	2	720	0.28%					





# Accumulated Cargo Handling on Cargo Aircrafts

## Distribution by Airline

Accumulated 2024					Accumulated 2023				
Airline	Incoming Cargo (Ton)	Outgoing Cargo (Ton)	Cargo (Ton)	Rate of Total	Incoming Cargo (Ton)	Outgoing Cargo (Ton)	Cargo (Ton)	Rate of Total	Rate of Change
PVV FLY PRO	298	35	333	0.13%					
MJ MYWAY AIRLINES	255	39	295	0.11%	73		73	0.03%	
RH HONG KONG AIR CARGO CARRI	195	33	227	0.08%					
AZQ SILK WAY AIRLINES	37	133	170	0.06%	21	32	53	0.02%	
HQ COMPASS AIR CARGO	79	70	150	0.05%					
ZS SOLINAIR	82		82	0.03%					
SMF SAN MARINO AIRLINES	44	15	59	0.02%	5,258	5,336	10,593	5.50%	-99.44%
DO DHL AIR Ltd	24	21	46	0.01%					
JAG ALPHA SKY LCC	22		22						
P7 SUPERNOVA AIRLINES	17	3	19						
FGB AIR 65	7	5	12						
IZ ARKIA ISRAELI AIRLINES		3	3			15	15		-80.00%
VKA VULKAN AIR	2		2		3		3		-33.33%
U8 TUS AIRWAYS		1	1						
OTHERS	393	285	678	0.26%	11,384	6,064	17,448	9.07%	-96.11%
TOTAL	177,411	75,336	252,745		127,944	64,420	192,368		31.38%





# Cargo Handling on Cargo Aircrafts

## Distribution by Countries for December

Country	December 2024				December 2023				
	Incoming Cargo (Ton)	Outgoing Cargo (Ton)	Cargo (Ton)	Rate of Total	Incoming Cargo (Ton)	Outgoing Cargo (Ton)	Cargo (Ton)	Rate of Total	Rate of Change
BELGIUM	3,646	2,439	6,085	23.72%	3,786	2,220	6,006	28.30%	1.31%
GERMANY	2,999	2,233	5,232	20.40%	2,317	1,764	4,081	19.23%	28.20%
CHINA	2,931	238	3,169	12.35%	2,108	215	2,322	10.94%	36.47%
UZBEKISTAN	2,544	201	2,746	10.70%					
AZERBAIJAN	1,214	1,131	2,345	9.14%	2,229	928	3,157	14.87%	-25.72%
SPAIN	676	4	680	2.65%					
FRANCE	426	152	578	2.25%	146	120	266	1.25%	117.29%
INDIA	383	143	525	2.04%		26	26	0.12%	
GEORGIA	415	3	418	1.62%	131		131	0.61%	
KENYA	325	11	336	1.31%					
GREECE	264	67	331	1.29%	24	7	31	0.14%	
ETHIOPIA	175	68	243	0.94%	83	60	143	0.67%	69.93%
ITALY	140	79	219	0.85%	98	77	175	0.82%	25.14%
NORWAY	212		212	0.82%	355		355	1.67%	-40.28%
CYPRUS		206	206	0.80%	64	26	90	0.42%	128.88%
MALTA		162	162	0.63%					
SWITZERLAND	62	37	99	0.38%	55	56	111	0.52%	-10.81%
UNITED KINGDOM	79		79	0.30%	57	52	109	0.51%	-27.52%
POLAND		42	42	0.16%					
TANZANIA		39	39	0.15%		40	40	0.18%	-2.50%
ROMANIA	15		15	0.05%					
OTHERS	1,660	224	1,885	7.35%	3,687	490	4,177	19.68%	-54.87%





# Cargo Handling on Cargo Aircrafts

## Distribution by Countries for December

Country	December 2024				December 2023				
	Incoming Cargo (Ton)	Outgoing Cargo (Ton)	Cargo (Ton)	Rate of Total	Incoming Cargo (Ton)	Outgoing Cargo (Ton)	Cargo (Ton)	Rate of Total	Rate of Change
TOTAL	18,166	7,479	25,645		15,139	6,079	21,218		20.86%





# Accumulated Cargo Handling on Cargo Aircrafts

## Distribution by Countries

Countries	Accumulated 2024				Accumulated 2023				
	Incoming Cargo (Ton)	Outgoing Cargo (Ton)	Cargo (Ton)	Rate of Total	Incoming Cargo (Ton)	Outgoing Cargo (Ton)	Cargo (Ton)	Rate of Total	Rate of Change
BELGIUM	43,682	25,699	69,381	27.45%	30,395	27,345	57,741	30.01%	20.15%
GERMANY	31,045	24,232	55,277	21.87%	25,316	14,310	39,626	20.59%	39.49%
CHINA	27,955	2,453	30,408	12.03%	17,553	1,804	19,357	10.06%	57.09%
AZERBAIJAN	9,857	10,271	20,129	7.96%	7,598	8,124	15,722	8.17%	28.03%
UZBEKISTAN	14,879	1,103	15,981	6.32%		6	6		
TURKEY	7,319	1,385	8,703	3.44%	21,593	4,571	26,164	13.60%	-66.73%
SPAIN	6,523	119	6,642	2.62%	1,849	46	1,895	0.98%	
GEORGIA	3,148	91	3,239	1.28%	149		149	0.07%	
NORWAY	3,170	33	3,203	1.26%	9,494	34	9,527	4.95%	-66.37%
INDIA	2,635	283	2,918	1.15%	98	78	176	0.09%	
GREECE	2,097	689	2,785	1.10%	109	508	618	0.32%	
FRANCE	1,303	1,378	2,681	1.06%	2,835	734	3,568	1.85%	-24.85%
ITALY	1,222	1,203	2,426	0.95%	848	867	1,715	0.89%	41.45%
ETHIOPIA	1,659	705	2,364	0.93%	923	257	1,180	0.61%	100.33%
CYPRUS	597	790	1,387	0.54%	4,179	771	4,950	2.57%	-71.97%
EGYPT	45	1,290	1,334	0.52%	14	2,454	2,469	1.28%	-45.97%
KENYA	925	220	1,145	0.45%	499	40	540	0.28%	112.03%
MALTA		787	787	0.31%					
SWITZERLAND	242	224	466	0.18%	175	119	294	0.15%	58.50%
UNITED KINGDOM	217	100	317	0.12%	111	166	276	0.14%	14.85%
NETHERLANDS	128	136	263	0.10%	116	132	247	0.12%	6.47%
SOUTH KOREA	201		201	0.07%					





# Accumulated Cargo Handling on Cargo Aircrafts

## Distribution by Countries

Countries	Accumulated 2024				Accumulated 2023				
	Incoming Cargo (Ton)	Outgoing Cargo (Ton)	Cargo (Ton)	Rate of Total	Incoming Cargo (Ton)	Outgoing Cargo (Ton)	Cargo (Ton)	Rate of Total	Rate of Change
CZECH REPUBLIC	89	97	186	0.07%	90	1	91	0.04%	104.39%
VIETNAM	175		175	0.06%					
TANZANIA		164	164	0.06%		40	40	0.02%	
POLAND		141	141	0.05%	38		38	0.01%	
ROMANIA	59	71	130	0.05%	35	10	45	0.02%	188.88%
KAZAKHSTAN	100		100	0.03%	107	3	110	0.05%	-9.09%
MOROCCO	91		91	0.03%	61	74	135	0.07%	-32.59%
SINGAPORE	82		82	0.03%					
BULGARIA	10	47	57	0.02%					
JAPAN	54		54	0.02%					
FINLAND		49	49	0.01%	19	35	53	0.02%	-7.54%
JORDAN	1	31	32	0.01%	90	121	210	0.10%	-84.76%
THAILAND		29	29	0.01%	344	153	497	0.25%	-94.16%
CANADA	21		21		34		34	0.01%	-38.23%
CROATIA		15	15						
LUXEMBOURG	14		14		176		176	0.09%	-92.04%
MACEDONIA	10		10		12		12		-16.66%
SWEDEN		6	6			9	9		-33.33%
AUSTRIA		4	4			759	759	0.39%	-99.47%
MONTENEGRO	4		4			3	3		33.33%
TURKMENISTAN		4	4						
PORTUGAL		2	2						





# Accumulated Cargo Handling on Cargo Aircrafts

## Distribution by Countries

Countries	Accumulated 2024				Accumulated 2023				
	Incoming Cargo (Ton)	Outgoing Cargo (Ton)	Cargo (Ton)	Rate of Total	Incoming Cargo (Ton)	Outgoing Cargo (Ton)	Cargo (Ton)	Rate of Total	Rate of Change
OTHERS	17,852	1,486	19,338	7.65%	3,084	848	3,932	2.04%	
TOTAL	177,411	75,336	252,745		127,944	64,420	192,368		31.38%





# Domestic Activity

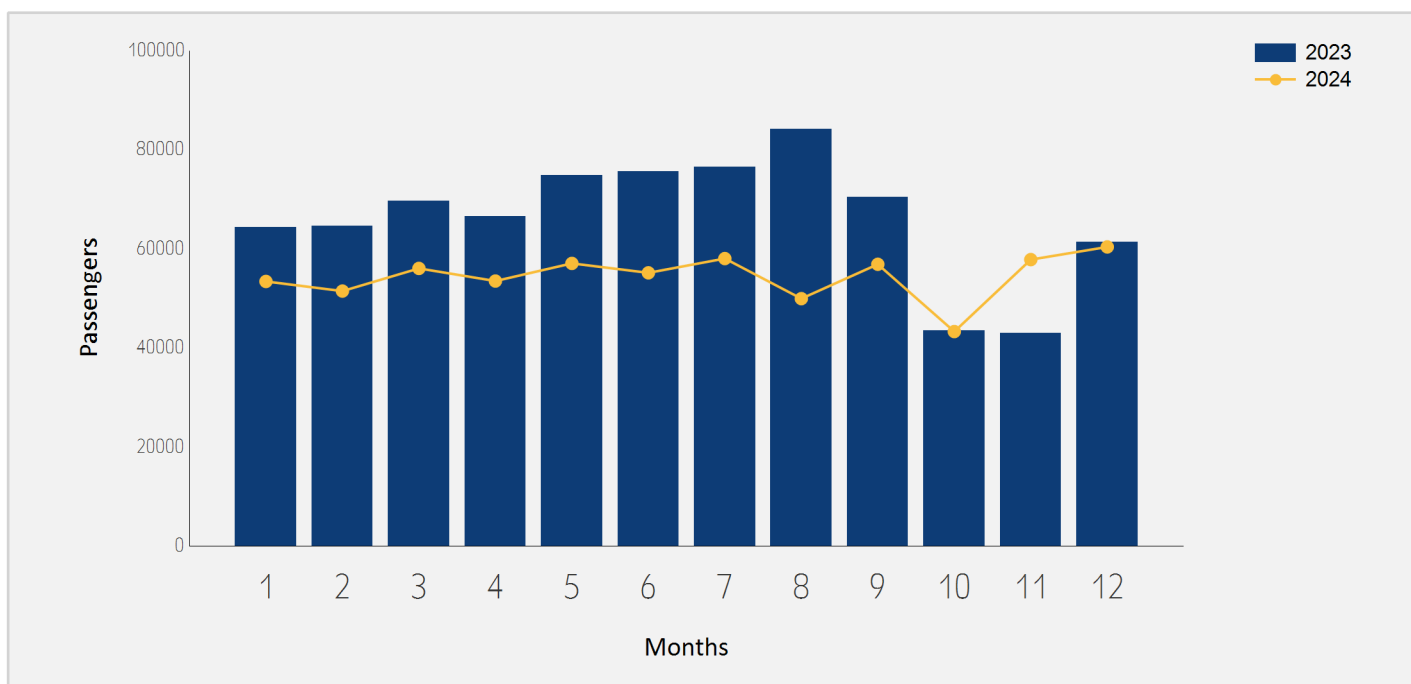




# Domestic Passenger Traffic

## Distribution by Months

Month	2024	2023	Rate of Change
January	53,410	64,275	-16.90%
February	51,461	64,605	-20.34%
March	56,042	69,701	-19.59%
April	53,490	66,584	-19.66%
May	57,056	74,806	-23.72%
June	55,148	75,564	-27.01%
July	58,034	76,526	-24.16%
August	49,938	84,142	-40.65%
September	56,877	70,374	-19.17%
October	43,284	43,521	-0.54%
November	57,818	42,967	34.56%
December	60,379	61,414	-1.68%
<b>Total</b>	<b>652,937</b>	<b>794,479</b>	<b>-17.81%</b>

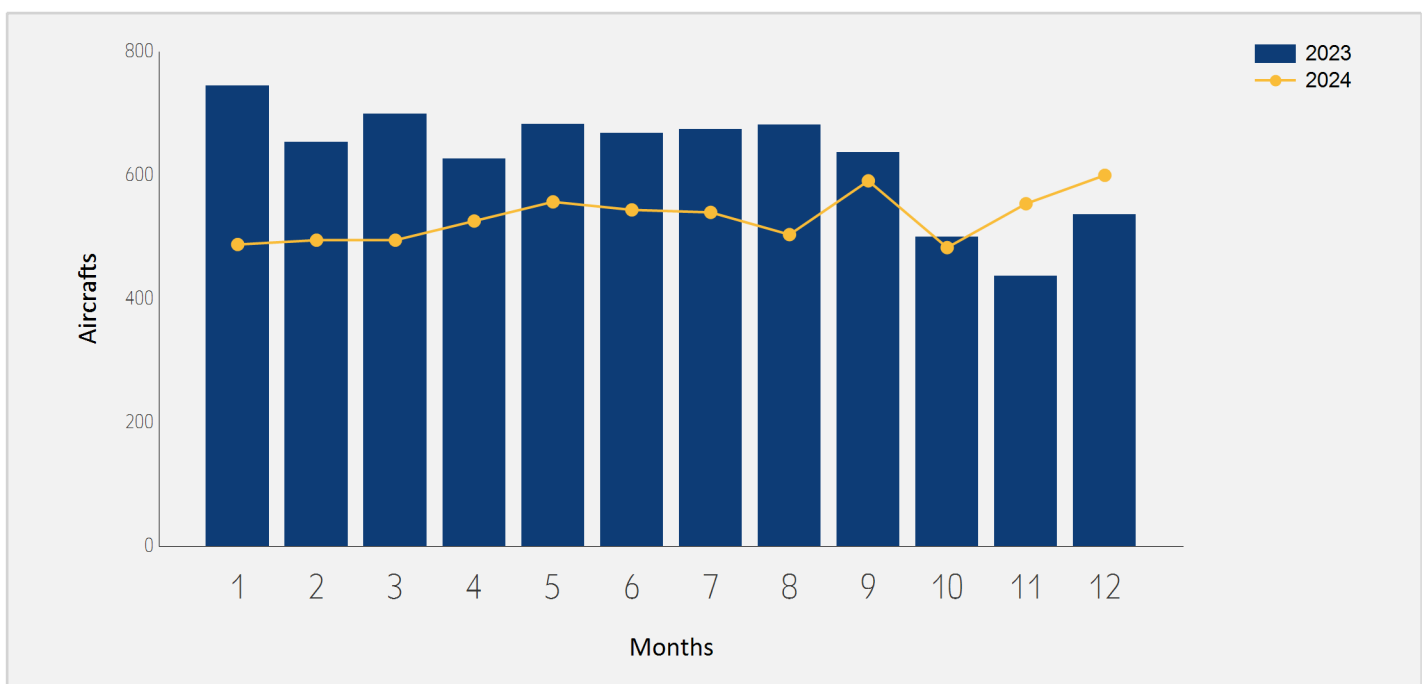




# Domestic Aircrafts Traffic

## Distribution by Months

Month	2024	2023	Rate of Change
January	488	745	-34.49%
February	495	654	-24.31%
March	495	699	-29.18%
April	526	627	-16.10%
May	557	683	-18.44%
June	544	668	-18.56%
July	540	674	-19.88%
August	504	682	-26.09%
September	591	637	-7.22%
October	483	500	-3.40%
November	554	437	26.77%
December	600	536	11.94%
<b>Total</b>	<b>6,377</b>	<b>7,542</b>	<b>-15.44%</b>





# Domestic Passengers Traffic

## Distribution by Airlines for December

December 2024			December 2023		
Airline	Passengers	Rate of Total	Passengers	Rate of Total	Rate of Change
IZ ARKIA ISRAELI AIRLINES	38,436	63.65%	37,419	60.92%	2.71%
6H ISRAIR AIRLINES	21,892	36.25%	23,984	39.05%	-8.72%
OTHERS	51	0.08%	11	0.01%	
TOTAL	60,379		61,414		-1.68%

# Accumulated Domestic Passengers Traffic

## Distribution by Airlines

Accumulated 2024			Accumulated 2023		
Airline	Passengers	Rate of Total	Passengers	Rate of Total	Rate of Change
IZ ARKIA ISRAELI AIRLINES	436,047	66.78%	531,437	66.89%	-17.94%
6H ISRAIR AIRLINES	213,870	32.75%	260,985	32.84%	-18.05%
OTHERS	3,020	0.46%	2,057	0.25%	46.81%
TOTAL	652,937		794,479		-17.81%





# Domestic Passenger Traffic

## Distribution by Destinations for December

Destination	December 2024		December 2023		Rate of Change
	Passengers	Rate of Total	Passengers	Rate of Total	
RAMON	60,368	99.98%	61,403	99.98%	-1.68%
OTHERS	11	0.01%	11	0.01%	
TOTAL	60,379		61,414		-1.68%

# Accumulated Domestic Passenger Traffic

## Distribution by Destinations

Destination	Accumulated 2024		Accumulated 2023		Rate of Change
	Passengers	Rate of Total	Passengers	Rate of Total	
RAMON	651,415	99.76%	788,670	99.26%	-17.40%
OTHERS	1,522	0.23%	5,809	0.73%	-73.79%
TOTAL	652,937		794,479		-17.81%

