



Monthly Report

Ben Gurion International Airport

October 2024



Israel Airport Authority

Ben Gurion International Airport

Produced by the Industry & Management Department

This report is protected by copyright and is the exclusive property of the Israel Airports Authority.

It must be emphasized that the data in the report are based on the reports of the airlines, and received under their responsibility.

The information is intended for personal use, and therefore may not be quoted or passed on to any third party without written permission from the Israel Airports Authority.

In addition, no commercial use may be made of this report.

Edit Yehoshua

Activity Coordinator

Tel. +972-3-9752017

Email: edity@iaa.gov.il

Rachel Lehava

Manager, Industrial & Management Dep.

Tel. +972-3-9752019

Email: rachelle@iaa.gov.il

Dimitry Shumacher

Head, Industrial & Management Dep.

Tel. +972-3-9752661

Email: dimitrysh@iaa.gov.il



Dear friends and partners,

I hereby respectfully submit for your review a report summarizing the aviation activity at Ben - Gurion International Airport in October 2024.

During the month, a total of 1,131,659 passengers on 8,959 international and domestic flights passed through Ben- Gurion Airport.

International passenger traffic in October totaled 1,088,375 passengers representing a decrease of 7.14% compared to October 2023.

International aircraft traffic totaled 8,476 flights, representing a decrease of 6.64% compared to October 2023.

International passenger traffic at Terminal 3 this month totaled 1,022,036 passengers. Passengers on International flights from Terminal 1, serving departing passengers only, totaled 66,339.

On domestic flights 43,284 passengers passed through Ben- Gurion Airport this month, compared with 43,521 in October 2023, a decrease of 0.54%.

Israeli airlines carried 847,469 passengers in this month, 77.86% of all travelers passing through Ben - Gurion Airport, an increase of 31.5% relative to the previous October.

The airlines which contributed the most to the increase of passenger traffic this month are: EL AL ISRAEL AIRLINES, ISRAIR AIRLINES and ARKIA ISRAELI AIRLINES.

The Destination with the highest volume of activity was LARNACA with a total of 92,260 passengers to and from, an increase of 19.12% compared to the previous October.

The country with the highest volume of activity was GREECE, with 161,216 passengers, constituting 14.81% of all activity.

The countries with the highest volume of activity this month are: GREECE, CYPRUS and UNITED STATES.

Cargo transportation this month stood at 26,996 tons and reflects an increase of 15.72% compared to October 2023. 6,969 tons were transported in passenger aircraft and 20,027 tons in cargo aircraft.

Below you will find additional tables providing details about movements of aircraft, passengers and cargo at Ben - Gurion International Airport.

*The Data is displayed according to actual UTC time.

Sincerely yours,
Udi Bar Oz
Managing Director,
Ben-Gurion International Airport



Content



Aviation Activity

Aviation Activity Summary	1
International Activity Summary	2 - 4
Domestic Activity Summary	5



International Activity

Distribution By Months	7 - 8
Distribution By Airlines	9 - 15
Distribution By Countries	16 - 21
Distribution By First Destination	22 - 33



Cargo Activity

Distribution by Transporter	35
Distribution By Months	35
Distribution By Airlines	36 - 42
Distribution By Countries	43 - 46



Domestic Activity

Distribution By Months	48 - 49
Distribution By Airlines	50
Distribution By Destinations	51





Passengers and Aircrafts

Aviation Activity at Ben Gurion International Airport

International Activity

	Current Month			Accumulated Since the beginning of the year		
	October 2024	October 2023	Rate Of Change	2024	2023	Rate Of Change
Incoming Aircrafts	4,236	4,502	-5.90%	43,435	68,373	-36.47%
Outgoing Aircrafts	4,240	4,577	-7.36%	43,466	68,434	-36.48%
Total Aircrafts	8,476	9,079	-6.64%	86,901	136,807	-36.47%
Incoming Passengers	573,435	601,913	-4.73%	5,946,988	10,024,207	-40.67%
Outgoing Passengers	514,940	570,222	-9.69%	5,993,278	10,160,899	-41.01%
Transit Passengers	32	149	-78.52%	2,334	2,582	-9.60%
Total Passengers	1,088,375	1,172,135	-7.14%	11,940,266	20,185,106	-40.84%

Domestic Activity

	Current Month			Accumulated Since the beginning of the year		
	October 2024	October 2023	Rate Of Change	2024	2023	Rate Of Change
Aircrafts	483	500	-3.40%	5,222	6,569	-20.50%
Passengers	43,284	43,521	-0.54%	534,539	690,098	-22.54%

International and Domestic Activity Summary

	Current Month			Accumulated Since the beginning of the year		
	October 2024	October 2023	Rate Of Change	2024	2023	Rate Of Change
Aircrafts	8,959	9,579	-6.47%	92,123	143,376	-35.74%
Passengers	1,131,659	1,215,656	-6.90%	12,474,805	20,875,204	-40.24%





Passengers and Aircrafts

Int'l Aviation Activity at Ben Gurion International Airport by Terminal

Terminal 3

	Current Month			Accumulated Since the beginning of the year		
	October 2024	October 2023	Rate of Change	2024	2023	Rate of Change
Incoming Aircrafts	4,236	4,502	-5.90%	43,435	68,373	-36.47%
Outgoing Aircrafts	3,811	4,176	-8.74%	39,281	54,220	-27.55%
Total Aircrafts	8,047	8,678	-7.27%	82,716	122,593	-32.52%
Incoming Passengers	573,435	601,913	-4.73%	5,946,988	10,024,207	-40.67%
Outgoing Passengers	448,601	507,700	-11.64%	5,277,247	7,729,958	-31.72%
Transit Passengers	32	149	-78.52%	2,334	2,582	-9.60%
Total Passengers	1,022,036	1,109,613	-7.89%	11,224,235	17,754,165	-36.77%

Terminal 1

	Current Month			Accumulated Since the beginning of the year		
	October 2024	October 2023	Rate of Change	2024	2023	Rate of Change
Incoming Aircrafts						
Outgoing Aircrafts	429	401	6.98%	4,185	14,214	-70.55%
Total Aircrafts	429	401	6.98%	4,185	14,214	-70.55%
Incoming Passengers						
Outgoing Passengers	66,339	62,522	6.10%	716,031	2,430,941	-70.54%
Total Passengers	66,339	62,522	6.10%	716,031	2,430,941	-70.54%





Passengers and Aircrafts

Int'l Aviation Activity at Ben Gurion International Airport by Flight Type

Schedule and Charter Flights

	Current Month			Accumulated Since the beginning of the year		
	October 2024	October 2023	Rate of Change	2024	2023	Rate of Change
Incoming Aircrafts	3,523	3,915	-10.01%	36,488	61,885	-41.03%
Outgoing Aircrafts	3,541	4,011	-11.71%	36,753	61,988	-40.70%
Total Aircrafts	7,064	7,926	-10.87%	73,241	123,873	-40.87%
Incoming Passengers	572,141	599,807	-4.61%	5,935,227	10,008,640	-40.69%
Outgoing Passengers	513,545	568,736	-9.70%	5,981,439	10,146,277	-41.04%
Transit Passengers	32	149	-78.52%	2,334	2,582	-9.60%
Total Passengers	1,085,686	1,168,543	-7.09%	11,916,666	20,154,917	-40.87%

Private Flights

	Current Month			Accumulated Since the beginning of the year		
	October 2024	October 2023	Rate of Change	2024	2023	Rate of Change
Incoming Aircrafts	292	211	38.38%	3,042	3,511	-13.35%
Outgoing Aircrafts	296	246	20.32%	3,047	3,527	-13.60%
Total Aircrafts	588	457	28.66%	6,089	7,038	-13.48%
Incoming Passengers	1,082	722	49.86%	9,368	11,450	-18.18%
Outgoing Passengers	960	904	6.19%	9,306	11,625	-19.94%
Total Passengers	2,042	1,626	25.58%	18,674	23,075	-19.07%





Passengers and Aircrafts

Int'l Aviation Activity at Ben Gurion International Airport by Flight Type

Cargo Flights

	Current Month			Accumulated Since the beginning of the year		
	October 2024	October 2023	Rate of Change	2024	2023	Rate of Change
Incoming Aircrafts	365	250	46.00%	3,494	2,624	33.15%
Outgoing Aircrafts	332	236	40.67%	3,217	2,586	24.40%
Total Aircrafts	697	486	43.41%	6,711	5,210	28.80%
Incoming Passengers	47	22	113.63%	268	154	74.02%
Outgoing Passengers	70	27	159.25%	322	231	39.39%
Total Passengers	117	49	138.77%	590	385	53.24%

Other Flights

	Current Month			Accumulated Since the beginning of the year		
	October 2024	October 2023	Rate of Change	2024	2023	Rate of Change
Incoming Aircrafts	56	126	-55.55%	411	353	16.43%
Outgoing Aircrafts	71	84	-15.47%	449	333	34.83%
Total Aircrafts	127	210	-39.52%	860	686	25.36%
Incoming Passengers	165	1,362	-87.88%	2,125	3,963	-46.37%
Outgoing Passengers	365	555	-34.23%	2,211	2,766	-20.06%
Total Passengers	530	1,917	-72.35%	4,336	6,729	-35.56%





Passengers and Aircrafts

Domestic Aviation Activity at Ben Gurion International Airport by Flight Type

Schedule Flights

	Current Month			Accumulated Since the beginning of the year		
	October 2024	October 2023	Rate of Change	2024	2023	Rate of Change
Aircrafts	397	417	-4.79%	4,341	5,841	-25.68%
Passengers	43,182	43,079	0.23%	532,359	687,066	-22.51%

Private Flights

	Current Month			Accumulated Since the beginning of the year		
	October 2024	October 2023	Rate of Change	2024	2023	Rate of Change
Aircrafts	31	15	106.66%	291	223	30.49%
Passengers	21	11	90.90%	233	224	4.01%

Other Flights

	Current Month			Accumulated Since the beginning of the year		
	October 2024	October 2023	Rate of Change	2024	2023	Rate of Change
Aircrafts	55	68	-19.11%	590	505	16.83%
Passengers	81	431	-81.20%	1,947	2,808	-30.66%



International Activity

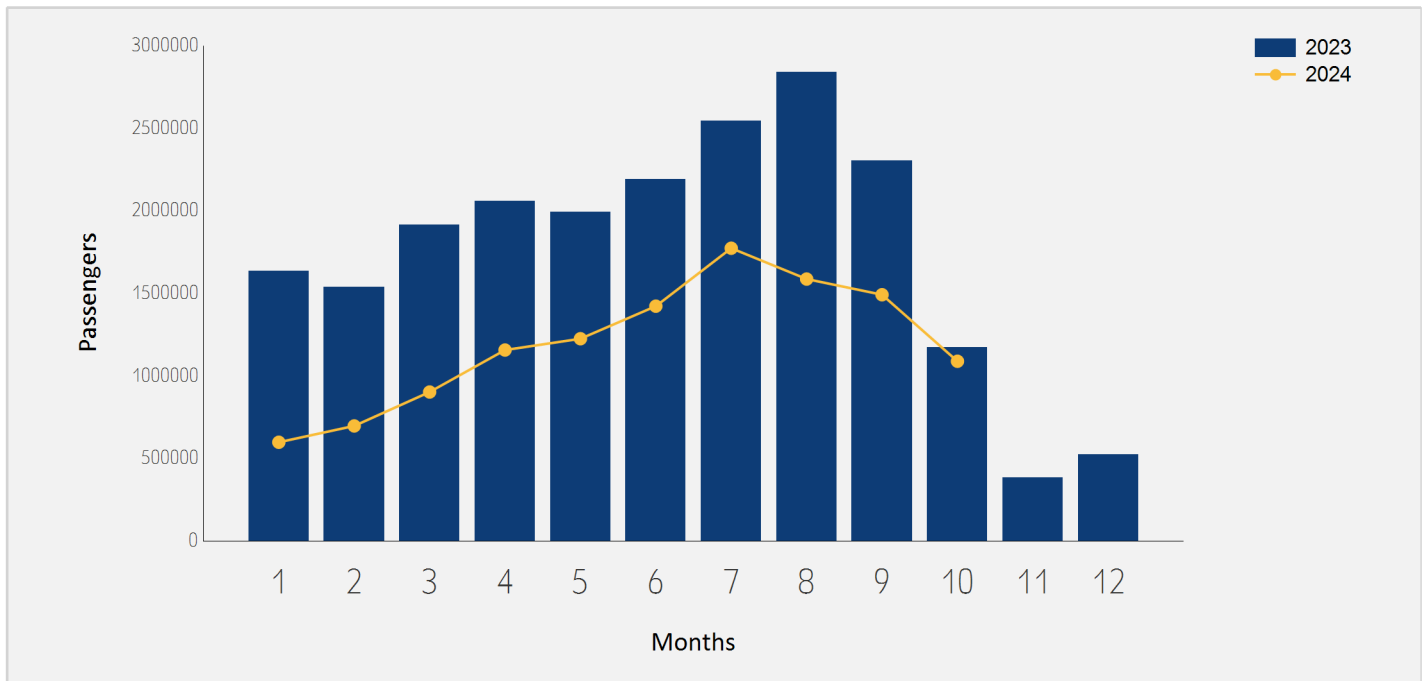




International Passenger Traffic

Distribution by Months

Months	2024	2023	Rate of Change
January	597,830	1,633,082	-63.39%
February	696,680	1,537,845	-54.69%
March	902,230	1,913,628	-52.85%
April	1,156,496	2,058,600	-43.82%
May	1,224,926	1,993,148	-38.54%
June	1,422,247	2,191,868	-35.11%
July	1,773,385	2,544,795	-30.31%
August	1,586,569	2,838,023	-44.09%
September	1,491,528	2,301,982	-35.20%
October	1,088,375	1,172,135	-7.14%
Total	11,940,266	20,185,106	-40.84%

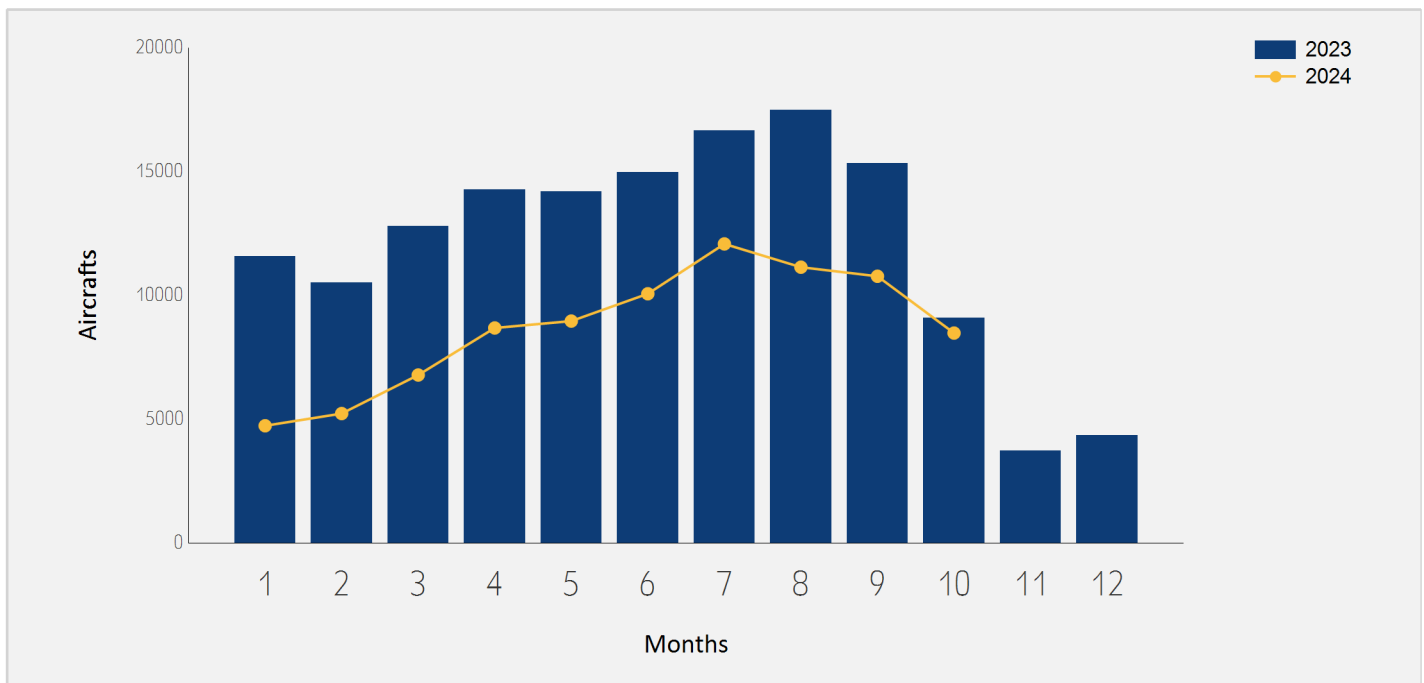




International Aircraft Traffic

Distribution by Months

Months	2024	2023	Rate of Change
January	4,732	11,574	-59.11%
February	5,225	10,497	-50.22%
March	6,781	12,792	-46.99%
April	8,682	14,275	-39.18%
May	8,960	14,182	-36.82%
June	10,063	14,961	-32.73%
July	12,076	16,639	-27.42%
August	11,136	17,490	-36.32%
September	10,770	15,318	-29.69%
October	8,476	9,079	-6.64%
Total	86,901	136,807	-36.47%





International Passenger Traffic

Distribution by Airline for October

		October 2024		October 2023		
Airline		Passengers	Rate of Total	Passengers	Rate of Total	Rate of Change
LY	EL AL ISRAEL AIRLINES	547,132	50.27%	499,496	42.61%	9.53%
6H	ISRAIR AIRLINES	177,733	16.33%	86,236	7.35%	106.10%
IZ	ARKIA ISRAELI AIRLINES	121,929	11.20%	56,722	4.83%	114.95%
FZ	FLYDUBAI	45,780	4.20%	17,469	1.49%	162.06%
U8	TUS AIRWAYS	28,312	2.60%	19,459	1.66%	45.49%
ET	ETHIOPIAN AIRLINES	15,964	1.46%	9,719	0.82%	64.25%
QS	SMARTWINGS	15,413	1.41%	3,067	0.26%	
H4	HISKY EUROPE SRL	10,430	0.95%	6,837	0.58%	52.55%
EY	ETIHAD AIRWAYS	10,332	0.94%	7,821	0.66%	32.10%
WZ	RED WINGS AIRLINES	9,467	0.86%	6,465	0.55%	46.43%
EAF	ELECTRA AIRWAYS	9,101	0.83%			
A9	GEORGIAN AIRWAYS	8,943	0.82%	6,126	0.52%	45.98%
BZ	BLUE BIRD AIRWAYS	8,578	0.78%	32,228	2.74%	-73.38%
E8	BEES AIRLINES ROMANIA	7,611	0.69%			
OE	FLYONE ROMANIA	7,208	0.66%			
HY	UZBEKISTAN AIR	7,053	0.64%	5,620	0.47%	25.49%
H7	HISKY	6,955	0.63%	3,467	0.29%	100.60%
LIL	FLY LILI	6,007	0.55%			
5F	FLYONE	5,899	0.54%	3,079	0.26%	91.58%
EA	EASTERN AIR LINES INC.	5,121	0.47%			
RO	TAROM - ROMANIAN AIR TRAN	4,887	0.44%	3,707	0.31%	31.83%





International Passenger Traffic

Distribution by Airline for October

		October 2024		October 2023		
Airline		Passengers	Rate of Total	Passengers	Rate of Total	Rate of Change
UX	AIR EUROPA	4,757	0.43%	4,151	0.35%	14.59%
A4	AZIMUTH AIRLINES	4,457	0.40%	6,023	0.51%	-26.00%
HU	HAINAN AIRLINES	3,637	0.33%	2,973	0.25%	22.33%
CY	CYPRUS AIRWAYS	3,557	0.32%	4,191	0.35%	-15.12%
HH	QANOT SHARQ	984	0.09%	959	0.08%	2.60%
HM	AIR SEYCHELLES	946	0.08%	1,810	0.15%	-47.73%
U5	SKYUP MALTA	886	0.08%			
DIR	AERRO DIREKT S.R.L	862	0.07%			
3F	FLYONE ARMENIA LLC	426	0.03%			
G2	GULLIVAIR	316	0.02%	227	0.01%	39.20%
	OTHERS	7,692	0.70%	384,283	32.78%	-97.99%
TOTAL		1,088,375		1,172,135		-7.14%





Int'l Accumulated Passenger Traffic

Distribution by Airline

		Accumulated 2024		Accumulated 2023		
Airline		Passengers	Rate of Total	Passengers	Rate of Total	Rate of Change
LY	EL AL ISRAEL AIRLINES	5,549,474	46.47%	4,813,928	23.84%	15.27%
6H	ISRAIR AIRLINES	1,221,864	10.23%	923,589	4.57%	32.29%
IZ	ARKIA ISRAELI AIRLINES	855,939	7.16%	694,669	3.44%	23.21%
W6	WIZZAIR	637,793	5.34%	1,998,168	9.89%	-68.08%
BZ	BLUE BIRD AIRWAYS	441,847	3.70%	425,166	2.10%	3.92%
FZ	FLYDUBAI	436,698	3.65%	260,553	1.29%	67.60%
A3	AEGEAN AIRLINES	241,166	2.01%	367,884	1.82%	-34.44%
U8	TUS AIRWAYS	177,642	1.48%	183,779	0.91%	-3.33%
LH	LUFTHANSA	150,588	1.26%	440,612	2.18%	-65.82%
ET	ETHIOPIAN AIRLINES	137,617	1.15%	125,397	0.62%	9.74%
OS	AUSTRIAN AIRLINES	132,573	1.11%	212,574	1.05%	-37.63%
XR	CORENDON EUROPE	120,810	1.01%	34,088	0.16%	
AF	AIR FRANCE	118,640	0.99%	260,473	1.29%	-54.45%
QS	SMARTWINGS	95,246	0.79%	79,417	0.39%	19.93%
WZ	RED WINGS AIRLINES	89,840	0.75%	55,176	0.27%	62.82%
UX	AIR EUROPA	88,815	0.74%	138,379	0.68%	-35.81%
UA	UNITED AIRLINES	79,425	0.66%	605,753	3.00%	-86.88%
TO	TRANSAVIA FRANCE	77,606	0.64%	261,436	1.29%	-70.31%
FR	RYANAIR	77,057	0.64%	1,147,880	5.68%	-93.28%
LX	SWISS INT'L AIRLINES	75,546	0.63%	172,454	0.85%	-56.19%
LO	LOT POLISH AIRLINES	72,584	0.60%	217,783	1.07%	-66.67%





Int'l Accumulated Passenger Traffic

Distribution by Airline

		Accumulated 2024		Accumulated 2023		
Airline		Passengers	Rate of Total	Passengers	Rate of Total	Rate of Change
EY	ETIHAD AIRWAYS	70,926	0.59%	96,801	0.47%	-26.73%
J2	AZERBAIJAN AIRLINES	64,150	0.53%	56,934	0.28%	12.67%
AZ	ITALIA TRASPORTO AEREO	58,924	0.49%	182,187	0.90%	-67.65%
H7	HISKY	55,299	0.46%	48,071	0.23%	15.03%
NO	NEOS	54,781	0.45%	74,145	0.36%	-26.11%
A4	AZIMUTH AIRLINES	52,626	0.44%	63,750	0.31%	-17.44%
BA	BRITISH AIRWAYS PLC	45,896	0.38%	232,191	1.15%	-80.23%
I2	IBERIA EXPRESS	43,741	0.36%	150,545	0.74%	-70.94%
HY	UZBEKISTAN AIR	42,343	0.35%	41,565	0.20%	1.87%
FB	BULGARIA AIR	42,147	0.35%	56,343	0.27%	-25.19%
H4	HISKY EUROPE SRL	41,673	0.34%	72,988	0.36%	-42.90%
RO	TAROM - ROMANIAN AIR TRAN	39,089	0.32%	59,626	0.29%	-34.44%
5F	FLYONE	35,964	0.30%	26,041	0.12%	38.10%
CY	CYPRUS AIRWAYS	35,451	0.29%	72,424	0.35%	-51.05%
LV	AIRZENA	34,063	0.28%			
AI	AIR INDIA	31,254	0.26%	64,220	0.31%	-51.33%
G2	GULLIVAIR	30,063	0.25%	227		
DL	DELTA AIRLINES	28,858	0.24%	290,866	1.44%	-90.07%
HU	HAINAN AIRLINES	25,162	0.21%	35,965	0.17%	-30.03%
SN	BRUSSELS AIRLINES	23,739	0.19%	138,497	0.68%	-82.85%
KL	K.L.M.	23,619	0.19%	116,185	0.57%	-79.67%





Int'l Accumulated Passenger Traffic

Distribution by Airline

		Accumulated 2024		Accumulated 2023		
Airline		Passengers	Rate of Total	Passengers	Rate of Total	Rate of Change
EW	EUROWINGS	15,414	0.12%			
OE	FLYONE ROMANIA	12,437	0.10%			
A9	GEORGIAN AIRWAYS	10,738	0.08%	74,098	0.36%	-85.50%
E8	BEES AIRLINES ROMANIA	10,600	0.08%			
EAF	ELECTRA AIRWAYS	10,511	0.08%	4,300	0.02%	144.44%
HM	AIR SEYCHELLES	10,488	0.08%	21,413	0.10%	-51.02%
EZY	EASYJET	10,361	0.08%	658,601	3.26%	-98.42%
BT	AIR BALTIC	9,750	0.08%	27,145	0.13%	-64.08%
VY	VUELING AIRLINES S.A.	7,434	0.06%	72,118	0.35%	-89.69%
HH	QANOT SHARQ	7,153	0.05%	6,743	0.03%	6.08%
LIL	FLY LILI	6,007	0.05%	6,317	0.03%	-4.90%
OU	CROATIA AIR	5,640	0.04%	14,333	0.07%	-60.65%
EA	EASTERN AIR LINES INC.	5,121	0.04%			
BUC	EUROPEAN AIR CHARTER	4,030	0.03%	19,871	0.09%	-79.71%
	OTHERS	56,044	0.46%	3,981,438	19.72%	-98.59%
	TOTAL	11,940,266		20,185,106		-40.84%





International Passenger Traffic

Distribution by Israeli Airlines for October

October 2024				October 2023		
Airlines		Passengers	Rate of Total	Passengers	Rate of Total	Rate of Change
LY	EL AL ISRAEL AIRLINES	547,132	50.27%	499,496	42.61%	9.53%
6H	ISRAIR AIRLINES	177,733	16.33%	86,236	7.35%	106.10%
IZ	ARKIA ISRAELI AIRLINES	121,929	11.20%	56,722	4.83%	114.95%
	OTHERS	675	0.06%	1,963	0.16%	-65.61%
	TOTAL	847,469	77.86%	644,417	54.97%	31.50%

Int'l Accumulated Passenger Traffic

Distribution by Israeli Airlines

Accumulated 2024				Accumulated 2023		
Airlines		Passengers	Rate of Total	Passengers	Rate of Total	Rate of Change
LY	EL AL ISRAEL AIRLINES	5,549,474	46.47%	4,813,928	23.84%	15.27%
6H	ISRAIR AIRLINES	1,221,864	10.23%	923,589	4.57%	32.29%
IZ	ARKIA ISRAELI AIRLINES	855,939	7.16%	694,669	3.44%	23.21%
	OTHERS	19,690	0.16%	24,986	0.12%	-21.19%
	TOTAL	7,646,967	64.04%	6,457,172	31.98%	18.42%





International Passenger Traffic

Distribution by Countries for October

Countries	October 2024		October 2023		
	Passengers	Rate of Total	Passengers	Total of Rate	Rate of Change
GREECE	161,216	14.81%	143,423	12.23%	12.40%
CYPRUS	113,972	10.47%	91,513	7.80%	24.54%
UNITED STATES	93,882	8.62%	115,909	9.88%	-19.00%
UNITED ARAB EMIRATES	79,970	7.34%	72,395	6.17%	10.46%
GEORGIA	69,249	6.36%	37,230	3.17%	86.00%
ITALY	65,452	6.01%	70,116	5.98%	-6.65%
ROMANIA	57,404	5.27%	31,188	2.66%	84.05%
FRANCE	54,044	4.96%	59,797	5.10%	-9.62%
UNITED KINGDOM	40,331	3.70%	59,708	5.09%	-32.45%
SPAIN	40,127	3.68%	43,384	3.70%	-7.50%
CZECH REPUBLIC	34,188	3.14%	15,322	1.30%	123.13%
GERMANY	30,604	2.81%	45,987	3.92%	-33.45%
HUNGARY	30,149	2.77%	21,540	1.83%	39.96%
THAILAND	29,134	2.67%	29,183	2.48%	-0.16%
NETHERLANDS	20,021	1.83%	25,144	2.14%	-20.37%
RUSSIAN FEDERATION	18,198	1.67%	22,407	1.91%	-18.78%
MOLDOVA	16,572	1.52%	6,580	0.56%	151.85%
MONTENEGRO	16,548	1.52%	6,855	0.58%	141.40%
POLAND	15,953	1.46%	11,986	1.02%	33.09%
ETHIOPIA	15,653	1.43%	9,446	0.80%	65.71%
BULGARIA	14,990	1.37%	16,402	1.39%	-8.60%
AUSTRIA	14,373	1.32%	21,065	1.79%	-31.76%





International Passenger Traffic

Distribution by Countries for October

Countries	October 2024		October 2023		
	Passengers	Rate of Total	Passengers	Total of Rate	Rate of Change
PORTUGAL	12,366	1.13%	13,324	1.13%	-7.19%
SWITZERLAND	10,758	0.98%	15,924	1.35%	-32.44%
UZBEKISTAN	8,037	0.73%	6,579	0.56%	22.16%
JAPAN	5,250	0.48%	3,845	0.32%	36.54%
SERBIA	4,547	0.41%	3,157	0.26%	44.02%
CHINA	3,673	0.33%	5,393	0.46%	-31.89%
TANZANIA	3,033	0.27%	1,635	0.13%	85.50%
SLOVENIA	2,495	0.22%	2,230	0.19%	11.88%
ARMENIA	1,858	0.17%	531	0.04%	
SEYCHELLES	1,652	0.15%	2,680	0.22%	-38.35%
AZERBAIJAN	1,136	0.10%	4,566	0.38%	-75.12%
LITHUANIA	459	0.04%	1,611	0.13%	-71.50%
MALAWI	282	0.02%			
IRELAND	273	0.02%	2,299	0.19%	-88.12%
OTHERS	526	0.04%	151,781	12.94%	-99.65%
TOTAL	1,088,375		1,172,135		-7.14%





Int'l Accumulated Passenger Traffic

Distribution by Countries

Countries	Accumulated 2024		Accumulated 2023		
	Passengers	Rate of Total	Passengers	Rate of Total	Rate of Change
GREECE	1,656,269	13.87%	1,687,675	8.36%	-1.86%
UNITED STATES	1,124,109	9.41%	1,841,861	9.12%	-38.96%
CYPRUS	956,612	8.01%	923,201	4.57%	3.61%
FRANCE	757,785	6.34%	1,133,606	5.61%	-33.15%
ITALY	725,210	6.07%	1,426,244	7.06%	-49.15%
UNITED ARAB EMIRATES	670,695	5.61%	1,105,515	5.47%	-39.33%
GEORGIA	584,633	4.89%	475,366	2.35%	22.98%
UNITED KINGDOM	530,390	4.44%	1,152,971	5.71%	-53.99%
GERMANY	518,575	4.34%	956,551	4.73%	-45.78%
SPAIN	500,809	4.19%	850,682	4.21%	-41.12%
ROMANIA	399,077	3.34%	568,455	2.81%	-29.79%
HUNGARY	375,890	3.14%	551,905	2.73%	-31.89%
CZECH REPUBLIC	316,012	2.64%	232,870	1.15%	35.70%
POLAND	305,044	2.55%	506,206	2.50%	-39.73%
AUSTRIA	304,569	2.55%	539,377	2.67%	-43.53%
BULGARIA	294,805	2.46%	420,792	2.08%	-29.94%
THAILAND	287,886	2.41%	243,638	1.20%	18.16%
SWITZERLAND	242,061	2.02%	382,819	1.89%	-36.76%
NETHERLANDS	240,591	2.01%	460,579	2.28%	-47.76%
RUSSIAN FEDERATION	226,248	1.89%	226,551	1.12%	-0.13%
MOLDOVA	150,122	1.25%	119,938	0.59%	25.16%
ETHIOPIA	136,569	1.14%	122,817	0.60%	11.19%





Int'l Accumulated Passenger Traffic

Distribution by Countries

Countries	Accumulated 2024		Accumulated 2023		
	Passengers	Rate of Total	Passengers	Rate of Total	Rate of Change
MONTENEGRO	125,547	1.05%	93,393	0.46%	34.42%
PORTUGAL	98,851	0.82%	182,164	0.90%	-45.73%
AZERBAIJAN	85,614	0.71%	78,046	0.38%	9.69%
UZBEKISTAN	47,965	0.40%	48,443	0.23%	-0.98%
JAPAN	38,962	0.32%	30,880	0.15%	26.17%
INDIA	32,820	0.27%	66,701	0.33%	-50.79%
SERBIA	31,395	0.26%	32,568	0.16%	-3.60%
CHINA	25,331	0.21%	113,064	0.56%	-77.59%
LITHUANIA	25,209	0.21%	55,589	0.27%	-54.65%
BELGIUM	24,293	0.20%	193,357	0.95%	-87.43%
SLOVENIA	14,770	0.12%	25,445	0.12%	-41.95%
SEYCHELLES	12,439	0.10%	22,627	0.11%	-45.02%
CROATIA	11,762	0.09%	33,902	0.16%	-65.30%
TANZANIA	9,956	0.08%	16,747	0.08%	-40.55%
LATVIA	9,764	0.08%	27,325	0.13%	-64.26%
ARMENIA	7,395	0.06%	16,761	0.08%	-55.87%
SOUTH AFRICA	5,633	0.04%	41,631	0.20%	-86.46%
BOSNIA	5,447	0.04%	1		
FINLAND	4,931	0.04%	36,282	0.17%	-86.40%
SLOVAKIA	3,209	0.02%	7,579	0.03%	-57.65%
MALTA	3,145	0.02%	40,530	0.20%	-92.24%
NORWAY	2,544	0.02%	3,128	0.01%	-18.67%





Int'l Accumulated Passenger Traffic

Distribution by Countries

Countries	Accumulated 2024		Accumulated 2023		
	Passengers	Rate of Total	Passengers	Rate of Total	Rate of Change
SRI LANKA	2,396	0.02%	613		
OTHERS	6,927	0.05%	3,088,711	15.30%	-99.77%
TOTAL	11,940,266		20,185,106		-40.84%





International Passenger Traffic

Distribution by First Destination for October

Destination	October 2024		October 2023		
	Passengers	Rate of Total	Passengers	Rate of Total	Rate of Change
LARNACA	92,260	8.47%	77,446	6.60%	19.12%
ATHENS	78,412	7.20%	84,902	7.24%	-7.64%
DUBAI	69,277	6.36%	58,690	5.00%	18.03%
PARIS-CHARLES DE GAULLE	43,222	3.97%	45,072	3.84%	-4.10%
NEW YORK - J.F.KENNEDY	40,651	3.73%	42,462	3.62%	-4.26%
BUCHAREST - OTOPENI	36,704	3.37%	26,662	2.27%	37.66%
BATUMI	36,129	3.31%	12,614	1.07%	186.41%
PRAGUE-RUZYNE	34,188	3.14%	15,280	1.30%	123.74%
TBILISI	33,120	3.04%	24,616	2.10%	34.54%
ROME - FIUMICINO	32,021	2.94%	31,312	2.67%	2.26%
BUDAPEST	30,149	2.77%	20,798	1.77%	44.96%
RHODES-PARADISI	28,789	2.64%	17,675	1.50%	62.87%
LONDON - HEATHROW	25,385	2.33%	36,589	3.12%	-30.62%
NEW YORK - NEWARK	22,911	2.10%	33,517	2.85%	-31.64%
HERAKLION	22,447	2.06%	16,671	1.42%	34.64%
BANGKOK INTL.-SUARNABHUM	21,820	2.00%	23,943	2.04%	-8.86%
PAPHOS	21,681	1.99%	13,744	1.17%	57.74%
BARCELONA	20,747	1.90%	18,709	1.59%	10.89%
AMSTERDAM	20,021	1.83%	24,489	2.08%	-18.24%
MILAN-MALPENSA	18,194	1.67%	18,618	1.58%	-2.27%
MADRID	17,984	1.65%	23,693	2.02%	-24.09%
CHISINAU	16,572	1.52%	6,580	0.56%	151.85%





International Passenger Traffic

Distribution by First Destination for October

Destination	October 2024		October 2023		
	Passengers	Rate of Total	Passengers	Rate of Total	Rate of Change
TIVAT	15,894	1.46%	5,622	0.47%	182.71%
ADDIS ABABA	15,653	1.43%	9,446	0.80%	65.71%
BERLIN BRANDENBURG INTL	14,440	1.32%	16,683	1.42%	-13.44%
THESSALONIKI	13,985	1.28%	10,133	0.86%	38.01%
BACAU	13,477	1.23%			
LUTON	13,377	1.22%	19,065	1.62%	-29.83%
LOS ANGELES	13,032	1.19%	12,153	1.03%	7.23%
VIENNA	11,445	1.05%	20,796	1.77%	-44.96%
MOSCOW-DOMODEDOVO	10,636	0.97%	10,235	0.87%	3.91%
ZURICH	10,587	0.97%	13,397	1.14%	-20.97%
ABU DHABI	10,541	0.96%	10,544	0.89%	-0.02%
SOFIA	10,113	0.92%	12,069	1.02%	-16.20%
CORFU	9,635	0.88%	3,138	0.26%	
WARSAW	9,276	0.85%	8,444	0.72%	9.85%
LISBON	8,832	0.81%	11,987	1.02%	-26.32%
FRANKFURT	8,633	0.79%	15,327	1.30%	-43.67%
MIAMI INTERNATIONAL	8,194	0.75%	11,146	0.95%	-26.48%
MUNICH	7,482	0.68%	11,050	0.94%	-32.28%
PHUKET	7,288	0.66%	4,935	0.42%	47.67%
SOCHI	6,635	0.60%	5,414	0.46%	22.55%
TASHKENT	6,374	0.58%	5,499	0.46%	15.91%
MARSEILLE	5,964	0.54%	4,067	0.34%	46.64%





International Passenger Traffic

Distribution by First Destination for October

Destination	October 2024		October 2023		
	Passengers	Rate of Total	Passengers	Rate of Total	Rate of Change
VENICE	5,669	0.52%	4,826	0.41%	17.46%
SUCEAVA-ROMANIA	5,584	0.51%	55		
TOKYO INTL.-NARITA	5,250	0.48%	3,845	0.32%	36.54%
BOSTON-LOGAN INT	5,200	0.47%	5,836	0.49%	-10.89%
VARNA	4,877	0.44%	3,306	0.28%	47.51%
NICE	4,774	0.43%	3,509	0.29%	36.05%
KRAKOW	4,763	0.43%	2,366	0.20%	101.31%
BELGRADE	4,547	0.41%	3,157	0.26%	44.02%
VILLAFRANCA-VERONA	4,271	0.39%	2,419	0.20%	76.56%
FORT LAUDERDALE	3,842	0.35%	1,209	0.10%	
SHENZHEN BAOAN INT.	3,637	0.33%	1,747	0.14%	108.18%
PORTO	3,534	0.32%	1,191	0.10%	196.72%
CATANIA FONTANAROSSA	3,143	0.28%	2,531	0.21%	24.18%
SALZBURG	2,919	0.26%	269	0.02%	
LJUBLJANA	2,495	0.22%	2,230	0.19%	11.88%
ZANZIBAR	2,272	0.20%	1,482	0.12%	53.30%
KEFALLINIA	2,204	0.20%			
NAPLES-CAPODICHINO	1,939	0.17%	5,149	0.43%	-62.34%
SANTORINI	1,889	0.17%	869	0.07%	117.37%
YEREVAN	1,858	0.17%	531	0.04%	
SITIA	1,830	0.16%			
SAMARKAND	1,663	0.15%	1,080	0.09%	53.98%





International Passenger Traffic

Distribution by First Destination for October

Destination	October 2024		October 2023		
	Passengers	Rate of Total	Passengers	Rate of Total	Rate of Change
MAHE SEYCHELLES INTL	1,652	0.15%	2,680	0.22%	-38.35%
KATOWICE	1,593	0.14%	1,176	0.10%	35.45%
MANCHESTER	1,492	0.13%	1,067	0.09%	39.83%
Tulcea Airport	1,429	0.13%			
MALAGA	1,236	0.11%	305	0.02%	
BAKU HEYDAR ALIYEV INT'L	1,124	0.10%	4,566	0.38%	-75.38%
KHANIA-SOUDABAY	1,063	0.09%	2,814	0.24%	-62.22%
KILIMANJARO	761	0.06%	153	0.01%	
PODGORICA	654	0.06%	1,233	0.10%	-46.95%
MOSCOW-ZHUKOVSKY INTL AIR	640	0.05%	372	0.03%	72.04%
KAUNAS	458	0.04%			
PREVEZA	356	0.03%	509	0.04%	-30.05%
RZESZOW-JASIONKA	321	0.02%			
MIKONOS	318	0.02%	2,817	0.24%	-88.71%
LILONGWE (KAMUZU INT'L)	282	0.02%			
ST. PETERSBURG	282	0.02%			
SHANNON	273	0.02%	195	0.01%	40.00%
OTHERS	2,104	0.19%	211,409	18.03%	-99.00%
TOTAL	1,088,375		1,172,135		-7.14%





Int'l Accumulated Passenger Traffic

Distribution by First Destination

Destination	Accumulated 2024		Accumulated 2023		
	Passengers	Rate of Total	Passengers	Rate of Total	Rate of Change
ATHENS	814,497	6.82%	727,095	3.60%	12.02%
LARNACA	757,549	6.34%	618,721	3.06%	22.43%
DUBAI	562,726	4.71%	884,945	4.38%	-36.41%
PARIS-CHARLES DE GAULLE	561,896	4.70%	709,491	3.51%	-20.80%
NEW YORK - J.F.KENNEDY	452,277	3.78%	570,504	2.82%	-20.72%
BUDAPEST	373,875	3.13%	517,788	2.56%	-27.79%
BUCHAREST - OTOPENI	355,755	2.97%	450,823	2.23%	-21.08%
ROME - FIUMICINO	340,826	2.85%	560,327	2.77%	-39.17%
NEW YORK - NEWARK	331,719	2.77%	556,319	2.75%	-40.37%
LONDON - HEATHROW	325,722	2.72%	639,018	3.16%	-49.02%
PRAGUE-RUZYNE	314,825	2.63%	232,732	1.15%	35.27%
TBILISI	293,608	2.45%	267,007	1.32%	9.96%
BATUMI	290,702	2.43%	207,208	1.02%	40.29%
VIENNA	286,199	2.39%	522,621	2.58%	-45.23%
RHODES-PARADISI	284,565	2.38%	282,504	1.39%	0.72%
MADRID	272,545	2.28%	479,693	2.37%	-43.18%
AMSTERDAM	240,541	2.01%	459,893	2.27%	-47.69%
MILAN-MALPENSA	239,652	2.00%	342,599	1.69%	-30.04%
HERAKLION	233,326	1.95%	269,065	1.33%	-13.28%
BANGKOK INTL.-SUARNABHUM	229,686	1.92%	184,260	0.91%	24.65%
BARCELONA	220,021	1.84%	350,135	1.73%	-37.16%
WARSAW	199,028	1.66%	303,008	1.50%	-34.31%





Int'l Accumulated Passenger Traffic

Distribution by First Destination

Destination	Accumulated 2024		Accumulated 2023		
	Passengers	Rate of Total	Passengers	Rate of Total	Rate of Change
PAPHOS	198,859	1.66%	304,157	1.50%	-34.61%
ZURICH	195,644	1.63%	258,653	1.28%	-24.36%
LUTON	190,243	1.59%	364,413	1.80%	-47.79%
FRANKFURT	177,120	1.48%	331,338	1.64%	-46.54%
MUNICH	162,231	1.35%	253,869	1.25%	-36.09%
BERLIN BRANDENBURG INTL	154,868	1.29%	293,326	1.45%	-47.20%
SOFIA	152,045	1.27%	239,297	1.18%	-36.46%
CHISINAU	150,122	1.25%	119,938	0.59%	25.16%
MOSCOW-DOMODEDOVO	142,879	1.19%	114,218	0.56%	25.09%
LOS ANGELES	141,390	1.18%	108,515	0.53%	30.29%
ADDIS ABABA	136,569	1.14%	122,817	0.60%	11.19%
TIVAT	110,869	0.92%	59,916	0.29%	85.04%
MIAMI INTERNATIONAL	110,029	0.92%	139,243	0.68%	-20.98%
THESSALONIKI	105,619	0.88%	162,453	0.80%	-34.98%
ABU DHABI	105,163	0.88%	216,355	1.07%	-51.39%
BAKU HEYDAR ALIYEV INT'L	85,602	0.71%	78,046	0.38%	9.68%
KRAKOW	83,181	0.69%	138,103	0.68%	-39.76%
BURGAS	83,010	0.69%	89,804	0.44%	-7.56%
LISBON	82,194	0.68%	157,975	0.78%	-47.97%
SOCHI	78,871	0.66%	43,252	0.21%	82.35%
PARIS-ORLY	76,211	0.63%	230,482	1.14%	-66.93%
BOSTON-LOGAN INT	63,941	0.53%	89,911	0.44%	-28.88%





Int'l Accumulated Passenger Traffic

Distribution by First Destination

Destination	Accumulated 2024		Accumulated 2023		
	Passengers	Rate of Total	Passengers	Rate of Total	Rate of Change
CORFU	61,034	0.51%	50,122	0.24%	21.77%
VARNA	59,746	0.50%	82,726	0.40%	-27.77%
PHUKET	58,136	0.48%	59,063	0.29%	-1.56%
VILLAFRANCA-VERONA	48,327	0.40%	42,809	0.21%	12.88%
MARSEILLE	48,083	0.40%	57,323	0.28%	-16.11%
NICE	45,714	0.38%	72,905	0.36%	-37.29%
GENEVA	45,690	0.38%	90,524	0.44%	-49.52%
VENICE	40,584	0.33%	92,753	0.45%	-56.24%
TOKYO INTL.-NARITA	38,959	0.32%	30,873	0.15%	26.19%
TASHKENT	37,957	0.31%	42,333	0.20%	-10.33%
MIKONOS	35,792	0.29%	48,845	0.24%	-26.72%
DELHI	32,808	0.27%	65,284	0.32%	-49.74%
BELGRADE	31,395	0.26%	32,568	0.16%	-3.60%
KOS	27,972	0.23%	34,167	0.16%	-18.13%
SHENZHEN BAOAN INT.	25,162	0.21%	3,448	0.01%	
BRUSSELS	23,892	0.20%	141,179	0.69%	-83.07%
FORT LAUDERDALE	23,499	0.19%	2,471	0.01%	
BACAU	22,305	0.18%			
CATANIA FONTANAROSSA	22,075	0.18%	57,653	0.28%	-61.71%
VILNIUS INTL	21,223	0.17%	55,389	0.27%	-61.68%
DUSSELDORF	19,295	0.16%	16,601	0.08%	16.22%
SANTORINI	19,085	0.15%	18,549	0.09%	2.88%





Int'l Accumulated Passenger Traffic

Distribution by First Destination

Destination	Accumulated 2024		Accumulated 2023		
	Passengers	Rate of Total	Passengers	Rate of Total	Rate of Change
GRENOBLE-SAUNT GEOIRS	18,421	0.15%	28,883	0.14%	-36.22%
KATOWICE	17,163	0.14%	50,759	0.25%	-66.18%
PORTO	16,642	0.13%	22,760	0.11%	-26.88%
SALZBURG	15,648	0.13%	10,546	0.05%	48.37%
NAPLES-CAPODICHINO	15,103	0.12%	146,446	0.72%	-89.68%
LJUBLJANA	14,770	0.12%	25,445	0.12%	-41.95%
PODGORICA	14,678	0.12%	33,477	0.16%	-56.15%
KEFALLINIA	13,672	0.11%	56		
SITIA	13,338	0.11%			
MAHE SEYCHELLES INTL	12,439	0.10%	22,627	0.11%	-45.02%
LONDON - GATWICK	12,091	0.10%	111,163	0.55%	-89.12%
PREVEZA	11,755	0.09%	13,874	0.06%	-15.27%
KHANIA-SOUDABAY	10,792	0.09%	37,505	0.18%	-71.22%
BERGAMO	10,361	0.08%	87,190	0.43%	-88.11%
SAMARKAND	10,008	0.08%	6,082	0.03%	64.55%
RIGA	9,764	0.08%	27,325	0.13%	-64.26%
SUCEAVA-ROMANIA	9,226	0.07%	6,143	0.03%	50.18%
IASI	9,039	0.07%	44,694	0.22%	-79.77%
ZAGREB	8,725	0.07%	27,660	0.13%	-68.45%
PATRAS ARAXOS	8,443	0.07%	13,723	0.06%	-38.47%
ZANZIBAR	8,008	0.06%	11,935	0.05%	-32.90%
MITILINI	7,810	0.06%	61		





Int'l Accumulated Passenger Traffic

Distribution by First Destination

Destination	Accumulated 2024		Accumulated 2023		
	Passengers	Rate of Total	Passengers	Rate of Total	Rate of Change
KARPATOS	7,425	0.06%	8,273	0.04%	-10.25%
YEREVAN	7,395	0.06%	16,761	0.08%	-55.87%
MALAGA	7,185	0.06%	7,407	0.03%	-2.99%
BARI -PALESE MACCHIE	6,218	0.05%	22,449	0.11%	-72.30%
JOHANNESBURG	5,633	0.04%	41,617	0.20%	-86.46%
RZESZOW-JASIONKA	5,581	0.04%	4,464	0.02%	25.02%
SARAJEVO	5,447	0.04%	1		
ROVANIEMI	4,924	0.04%	10,281	0.05%	-52.10%
KAUNAS	3,986	0.03%	200		
MULHOUSE	3,769	0.03%			
ST. PETERSBURG	3,387	0.02%	60		
MALTA	3,145	0.02%	40,530	0.20%	-92.24%
PIESTANY	2,953	0.02%	2,941	0.01%	0.40%
INNSBRUCK	2,713	0.02%	6,200	0.03%	-56.24%
LYON - SATOLAS	2,603	0.02%	31,371	0.15%	-91.70%
ZADAR	2,559	0.02%	11		
COLOMBO-KATUNAYAKE	2,396	0.02%	613		
DUBAI AL MAKTOUM INT AP	2,377	0.01%	1,252		89.85%
BADEN BADEN	2,049	0.01%	28,026	0.13%	-92.68%
DEBRECEN	2,015	0.01%	34,117	0.16%	-94.09%
MEMMINGEN	2,014	0.01%	28,058	0.13%	-92.82%
OTHERS	29,663	0.24%	4,022,684	19.92%	-99.26%





Int'l Accumulated Passenger Traffic

Distribution by First Destination

Destination	Accumulated 2024		Accumulated 2023		
	Passengers	Rate of Total	Passengers	Rate of Total	Rate of Change
TOTAL	11,940,266		20,185,106		-40.84%



Cargo Activity





Cargo Handling

Distribution by Transporter

Transporter	October 2024 (Ton)	October 2023 (Ton)	Rate of Change
Cargo on Passenger Aircrafts - Incoming	3,299	4,367	-24.45%
Cargo on Passenger Aircrafts - Outgoing	3,670	4,087	-10.20%
Total Cargo on Passenger Aircrafts	6,969	8,454	-17.56%
Cargo on Cargo Aircrafts - Incoming	14,395	9,640	49.32%
Cargo on Cargo Aircrafts - Outgoing	5,632	5,233	7.62%
Total Cargo on Cargo Aircrafts	20,027	14,873	34.65%
Total	26,996	23,327	15.72%

Distribution by Months

Month	2024 (ton)			2023 (ton)			Rate of Change
	Cargo	Mail	Total	Cargo	Mail	Total	
January	26,619	580	27,200	28,684	635	29,320	-7.23%
February	26,737	441	27,178	28,279	561	28,841	-5.76%
March	29,890	402	30,291	32,972	745	33,717	-10.16%
April	27,294	427	27,721	27,461	626	28,086	-1.29%
May	27,702	523	28,225	29,346	653	29,999	-5.91%
June	27,477	388	27,864	27,858	562	28,419	-1.95%
July	30,216	432	30,648	28,987	548	29,536	3.76%
August	27,788	342	28,130	30,413	575	30,988	-9.22%
September	28,867	416	29,283	28,104	524	28,628	2.28%
October	26,678	318	26,996	22,974	352	23,327	15.72%
Total	279,268	4,269	283,536	285,078	5,781	290,861	-2.51%





Cargo Handling on Passenger Aircrafts

Distribution by Airline for October

October 2024					October 2023					
Airline		Incoming Cargo (Ton)	Outgoing Cargo (Ton)	Cargo (Ton)	Rate of Total	Incoming Cargo (Ton)	Outgoing Cargo (Ton)	Cargo (Ton)	Rate of Total	Rate of Change
LY	EL AL ISRAEL AIRLINES	2,324	3,167	5,491	78.79%	2,382	2,785	5,167	61.11%	6.27%
HU	HAINAN AIRLINES	294	118	412	5.91%	253	120	373	4.41%	10.45%
ET	ETHIOPIAN AIRLINES	173	108	281	4.03%	80	22	102	1.20%	175.49%
EY	ETIHAD AIRWAYS	69	68	136	1.95%	77	118	194	2.29%	-29.89%
HY	UZBEKISTAN AIR	90	24	114	1.63%	33	34	68	0.80%	67.64%
FZ	FLYDUBAI	79	34	113	1.62%	42	14	56	0.66%	101.78%
UX	AIR EUROPA	83	23	106	1.52%	77	19	96	1.13%	10.41%
FX	FEDERAL EXPRESS	50	16	66	0.94%					
NCR	NATIONAL AIRLINES		45	45	0.64%	14	5	19	0.22%	136.84%
QS	SMARTWINGS	33	6	39	0.55%	4		4	0.04%	
RO	TAROM - ROMANIAN AIR TRAN	22	4	26	0.37%	7	2	8	0.09%	
H4	HISKY EUROPE SRL	17	4	21	0.30%					
U8	TUS AIRWAYS	16	4	20	0.28%	2	1	3	0.03%	
5F	FLYONE	11	7	17	0.24%	3	2	5	0.05%	
WZ	RED WINGS AIRLINES	8	8	16	0.22%	3	2	5	0.05%	
H7	HISKY	8	5	14	0.20%	2	1	3	0.03%	
C6	CENTRUM AIR		11	11	0.15%					
KLJ	KLASJET	10		10	0.14%					
GH	GEORGIAN AIRLINES		9	9	0.12%					
A4	AZIMUTH AIRLINES	5		5	0.07%					
CY	CYPRUS AIRWAYS	3		4	0.05%	2		2	0.02%	100.00%
RD	EASY CHARTER LLC		3	3	0.04%					





Cargo Handling on Passenger Aircrafts

Distribution by Airline for October

October 2024					October 2023				
Airline	Incoming Cargo (Ton)	Outgoing Cargo (Ton)	Cargo (Ton)	Rate of Total	Incoming Cargo (Ton)	Outgoing Cargo (Ton)	Cargo (Ton)	Rate of Total	Rate of Change
IZ ARKIA ISRAELI AIRLINES	1	2	3	0.04%					
ZS SOLINAIR		3	3	0.04%					
JAG ALPHA SKY LCC		2	2	0.02%					
HM AIR SEYCHELLES	1		1	0.01%					
6H ISRAIR AIRLINES		1	1	0.01%		3	3	0.03%	-66.66%
TOTAL	3,299	3,670	6,969		4,367	4,087	8,454		-17.56%





Accumulated Cargo Handling on Passengers Aircrafts

Distribution by Airline

Accumulated 2024					Accumulated 2023					
Airline		Incoming Cargo (Ton)	Outgoing Cargo (Ton)	Cargo (Ton)	Rate of Total	Incoming Cargo (Ton)	Outgoing Cargo (Ton)	Cargo (Ton)	Rate of Total	Rate of Change
LY	EL AL ISRAEL AIRLINES	25,237	31,667	56,904	70.91%	21,329	22,790	44,119	31.89%	28.97%
AF	AIR FRANCE	2,408	2,151	4,559	5.68%	4,665	2,811	7,476	5.40%	-39.01%
HU	HAINAN AIRLINES	2,301	1,129	3,429	4.27%	2,205	806	3,012	2.17%	13.84%
UX	AIR EUROPA	2,018	930	2,948	3.67%	2,680	824	3,504	2.53%	-15.86%
UA	UNITED AIRLINES	1,035	1,121	2,156	2.68%	8,045	8,014	16,059	11.60%	-86.57%
LX	SWISS INT'L AIRLINES	777	734	1,512	1.88%	538	364	903	0.65%	67.44%
FZ	FLYDUBAI	1,183	210	1,394	1.73%	840	159	999	0.72%	39.53%
HY	UZBEKISTAN AIR	535	329	864	1.07%	174	185	359	0.25%	140.66%
AI	AIR INDIA	393	353	745	0.92%	700	448	1,148	0.82%	-35.10%
FX	FEDERAL EXPRESS	470	190	660	0.82%	9	2	12		
ET	ETHIOPIAN AIRLINES	398	204	602	0.75%	852	300	1,152	0.83%	-47.74%
DL	DELTA AIRLINES	243	240	483	0.60%	2,564	2,075	4,639	3.35%	-89.58%
A3	AEGEAN AIRLINES	413	60	473	0.58%	411	169	580	0.41%	-18.44%
EY	ETIHAD AIRWAYS	227	236	462	0.57%	1,299	515	1,814	1.31%	-74.53%
QS	SMARTWINGS	220	33	253	0.31%	118	16	134	0.09%	88.80%
LH	LUFTHANSA	177	66	243	0.30%	442	325	767	0.55%	-68.31%
NC R	NATIONAL AIRLINES		211	211	0.26%	14	5	19	0.01%	
LO	LOT POLISH AIRLINES	149	56	205	0.25%	339	80	419	0.30%	-51.07%
AZ	ITALIA TRASPORTO AEREO	113	77	191	0.23%	327	179	506	0.36%	-62.25%
J2	AZERBAIJAN AIRLINES	123	67	190	0.23%	90	13	104	0.07%	82.69%
RO	TAROM - ROMANIAN AIR TRAN	146	34	180	0.22%	111	32	142	0.10%	26.76%
U8	TUS AIRWAYS	121	24	144	0.17%	144	19	163	0.11%	-11.65%





Accumulated Cargo Handling on Passengers Aircrafts

Distribution by Airline

Accumulated 2024					Accumulated 2023					
Airline		Incoming Cargo (Ton)	Outgoing Cargo (Ton)	Cargo (Ton)	Rate of Total	Incoming Cargo (Ton)	Outgoing Cargo (Ton)	Cargo (Ton)	Rate of Total	Rate of Change
OS	AUSTRIAN AIRLINES	124	19	144	0.17%	133	60	193	0.13%	-25.38%
H7	HISKY	92	48	140	0.17%	11	6	16	0.01%	
A4	AZIMUTH AIRLINES	110	14	124	0.15%	14	6	20	0.01%	
WZ	RED WINGS AIRLINES	43	72	116	0.14%	25	43	68	0.04%	70.58%
H4	HISKY EUROPE SRL	100	12	112	0.13%					
I2	IBERIA EXPRESS	32	60	92	0.11%	119	98	217	0.15%	-57.60%
BA	BRITISH AIRWAYS PLC		78	78	0.09%	3,146	1,384	4,530	3.27%	-98.27%
5Y	ATLAS AIR Inc.		77	77	0.09%		128	128	0.09%	-39.84%
C6	CENTRUM AIR		75	75	0.09%					
5F	FLYONE	52	21	73	0.09%	48	12	60	0.04%	21.66%
HM	AIR SEYCHELLES	64		65	0.08%	86	1	88	0.06%	-26.13%
CY	CYPRUS AIRWAYS	44	2	46	0.05%	14	6	20	0.01%	130.00%
6H	ISRAIR AIRLINES	4	42	46	0.05%		18	18	0.01%	155.55%
BT	AIR BALTIC	38	7	45	0.05%	87	23	110	0.07%	-59.09%
GH	GEORGIAN AIRLINES		39	39	0.04%					
AC	AIR CANADA	7	19	25	0.03%	2,966	3,099	6,065	4.38%	-99.58%
KL	K.L.M.	2	14	16	0.01%	1,540	672	2,212	1.59%	-99.27%
FB	BULGARIA AIR	15		15	0.01%	24	13	36	0.02%	-58.33%
RD	EASY CHARTER LLC		14	14	0.01%					
ZS	SOLINAIR		13	13	0.01%					
QY	EUROPEAN AIR TRANSPORT	6	7	13	0.01%	11	25	36	0.02%	-63.88%
8V	ASTRAL AVIATION		11	11	0.01%		21	21	0.01%	-47.61%





Accumulated Cargo Handling on Passengers Aircrafts

Distribution by Airline

Accumulated 2024					Accumulated 2023				
Airline	Incoming Cargo (Ton)	Outgoing Cargo (Ton)	Cargo (Ton)	Rate of Total	Incoming Cargo (Ton)	Outgoing Cargo (Ton)	Cargo (Ton)	Rate of Total	Rate of Change
KLJ KLASJET	10		10	0.01%					
SN BRUSSELS AIRLINES	7	3	10	0.01%	219	21	240	0.17%	-95.83%
IZ ARKIA ISRAELI AIRLINES	6	3	9	0.01%	3	3	6		50.00%
MJ MYWAY AIRLINES	1	7	9	0.01%					
3V ASL AIRLINES BELGIUM		5	5						
BZ BLUE BIRD AIRWAYS	4		4		1		1		
JAG ALPHA SKY LCC		2	2						
GW GETJET AIRLINES		1	1						
LV AIRZENA		1	1						
TOTAL	39,449	40,791	80,240		80,074	58,266	138,338		-41.99%





Cargo Handling on Cargo Aircrafts

Distribution by Airlines October

October 2024					October 2023					
Airline		Incoming Cargo (Ton)	Outgoing Cargo (Ton)	Cargo (Ton)	Rate of Total	Incoming Cargo (Ton)	Outgoing Cargo (Ton)	Cargo (Ton)	Rate of Total	Rate of Change
ICL	C.A.L ISRAELI CARGO	5,003	1,806	6,809	33.99%	3,209	1,271	4,480	30.12%	51.98%
QY	EUROPEAN AIR TRANSPORT	1,671	1,361	3,032	15.13%	1,315	1,210	2,525	16.97%	20.07%
AZG	SILK WAY WEST AIRLINES	1,424	798	2,222	11.09%	867	786	1,654	11.12%	34.34%
C6	CENTRUM AIR	1,962	192	2,154	10.75%					
NCR	NATIONAL AIRLINES	1,521	7	1,528	7.62%	134	32	165	1.10%	
LY	EL AL ISRAEL AIRLINES	783	487	1,270	6.34%	700	404	1,104	7.42%	15.03%
FX	FEDERAL EXPRESS	797	461	1,259	6.28%	271	227	498	3.34%	152.81 %
RD	EASY CHARTER LLC	388	188	576	2.87%	155	36	191	1.28%	
ABR	ASL Airlines (Ireland) Li	269	250	519	2.59%					
GH	GEORGIAN AIRLINES	223		223	1.11%					
8V	ASTRAL AVIATION	199		199	0.99%	51		51	0.34%	
SMF	SAN MARINO AIRLINES	44	15	59	0.29%					
ZS	SOLINAIR	39		39	0.19%					
M4	POSTE AIR CARGO	25	10	36	0.17%	14	16	30	0.20%	20.00%
MJ	MYWAY AIRLINES	17		17	0.08%					
JAG	ALPHA SKY LCC	16		16	0.07%					
AZQ	SILK WAY AIRLINES		13	13	0.06%	21		21	0.14%	-38.09%
IZ	ARKIA ISRAELI AIRLINES		3	3	0.01%					
U8	TUS AIRWAYS		1	1						
	OTHERS	14	40	53	0.26%	2,903	1,251	4,154	27.92%	-98.72%
	TOTAL	14,395	5,632	20,027		9,640	5,233	14,873		34.65%





Accumulated Cargo Handling on Cargo Aircrafts

Distribution by Airline

Accumulated 2024						Accumulated 2023				
Airline		Incoming Cargo (Ton)	Outgoing Cargo (Ton)	Cargo (Ton)	Rate of Total	Incoming Cargo (Ton)	Outgoing Cargo (Ton)	Cargo (Ton)	Rate of Total	Rate of Change
ICL	C.A.L ISRAELI CARGO	48,792	16,779	65,571	32.25%	34,964	13,719	48,683	31.91%	34.68%
QY	EUROPEAN AIR TRANSPORT	16,045	13,929	29,974	14.74%	13,781	9,522	23,303	15.27%	28.62%
AZG	SILK WAY WEST AIRLINES	12,619	8,163	20,782	10.22%	4,302	6,128	10,430	6.83%	99.25%
LY	EL AL ISRAEL AIRLINES	9,071	5,894	14,965	7.36%	2,867	1,641	4,508	2.95%	
C6	CENTRUM AIR	10,282	722	11,004	5.41%					
NCR	NATIONAL AIRLINES	8,707	444	9,151	4.50%	153	32	184	0.12%	
FX	FEDERAL EXPRESS	5,383	2,885	8,268	4.06%	6,248	3,344	9,592	6.28%	-13.80%
LH	LUFTHANSA	4,575	3,667	8,242	4.05%	4,331	3,753	8,084	5.30%	1.95%
3V	ASL AIRLINES BELGIUM	4,409	1,834	6,243	3.07%					
RD	EASY CHARTER LLC	4,941	1,000	5,940	2.92%	155	36	191	0.12%	
MN B	MNG CARGO AIRLINES	5,122	720	5,842	2.87%	13,506	1,605	15,112	9.90%	-61.34%
ABR	ASL Airlines (Ireland) Li	2,819	2,313	5,132	2.52%					
ABD	ATLANTA ICELANDIC	2,278	1	2,279	1.12%	543	218	761	0.49%	199.47%
ET	ETHIOPIAN AIRLINES	1,390	718	2,109	1.03%	840	281	1,121	0.73%	88.13%
IGA	SKY TAXI	1,153	241	1,394	0.68%	397	214	611	0.40%	128.15%
5Y	ATLAS AIR Inc.	951	29	980	0.48%	777	4	782	0.51%	25.31%
M4	POSTE AIR CARGO	641	291	933	0.45%	690	287	977	0.64%	-4.50%
8V	ASTRAL AVIATION	923	1	924	0.45%	499	66	565	0.37%	63.53%
5O	ASL AIRLINES	403	331	734	0.36%					
HY	UZBEKISTAN AIR	669	2	671	0.33%					
GH	GEORGIAN AIRLINES	560		560	0.27%					
MJ	MYWAY AIRLINES	238	23	261	0.12%	15		15		





Accumulated Cargo Handling on Cargo Aircrafts

Distribution by Airline

Accumulated 2024					Accumulated 2023				
Airline	Incoming Cargo (Ton)	Outgoing Cargo (Ton)	Cargo (Ton)	Rate of Total	Incoming Cargo (Ton)	Outgoing Cargo (Ton)	Cargo (Ton)	Rate of Total	Rate of Change
RH HONG KONG AIR CARGO CARRI	195	33	227	0.11%					
HQ COMPASS AIR CARGO	79	70	150	0.07%					
AZQ SILK WAY AIRLINES	37	87	124	0.06%	21	13	33	0.02%	
ZS SOLINAIR	82		82	0.04%					
SMF SAN MARINO AIRLINES	44	15	59	0.02%	5,258	5,336	10,593	6.94%	-99.44%
DO DHL AIR Ltd	24	21	46	0.02%					
JAG ALPHA SKY LCC	16		16						
FGB AIR 65	7	5	12						
IZ ARKIA ISRAELI AIRLINES		3	3						
VKA VULKAN AIR	2		2		3		3		-33.33%
U8 TUS AIRWAYS		1	1						
RRR ROYAL AIR FORCE	1		1						
OTHERS	362	254	616	0.30%	10,941	6,032	16,973	11.12%	-96.37%
TOTAL	142,821	60,476	203,296		100,291	52,229	152,523		33.28%





Cargo Handling on Cargo Aircrafts

Distribution by Countries for October

Country	October 2024				October 2023				
	Incoming Cargo (Ton)	Outgoing Cargo (Ton)	Cargo (Ton)	Rate of Total	Incoming Cargo (Ton)	Outgoing Cargo (Ton)	Cargo (Ton)	Rate of Total	Rate of Change
BELGIUM	3,815	1,628	5,443	27.17%	4,041	2,146	6,187	41.59%	-12.02%
GERMANY	2,180	1,942	4,122	20.58%	1,622	898	2,520	16.94%	63.57%
UZBEKISTAN	1,862	192	2,054	10.25%					
CHINA	1,518	177	1,695	8.46%	367	100	467	3.13%	
AZERBAIJAN	871	784	1,655	8.26%	538	786	1,324	8.90%	25.00%
SPAIN	624	11	635	3.17%	125		125	0.84%	
GREECE	271	203	474	2.36%	29	205	234	1.57%	102.56%
INDIA	331		331	1.65%					
NORWAY	317		317	1.58%	321	1	322	2.16%	-1.55%
GEORGIA	240		240	1.19%					
FRANCE	54	93	147	0.73%	74	20	93	0.62%	58.06%
KAZAKHSTAN	100		100	0.49%					
ITALY	75	10	86	0.42%	14	60	74	0.49%	16.21%
KENYA	82		82	0.40%	51		51	0.34%	60.78%
CYPRUS		67	67	0.33%	83	294	377	2.53%	-82.22%
MALTA		63	63	0.31%					
JAPAN	54		54	0.26%					
FINLAND		49	49	0.24%					
JORDAN		21	21	0.10%					
CZECH REPUBLIC		7	7	0.03%					
SWEDEN		6	6	0.02%					
OTHERS	2,000	380	2,379	11.87%	2,375	722	3,097	20.82%	-23.18%





Cargo Handling on Cargo Aircrafts

Distribution by Countries for October

October 2024					October 2023				
Country	Incoming Cargo (Ton)	Outgoing Cargo (Ton)	Cargo (Ton)	Rate of Total	Incoming Cargo (Ton)	Outgoing Cargo (Ton)	Cargo (Ton)	Rate of Total	Rate of Change
TOTAL	14,395	5,632	20,027		9,640	5,233	14,873		34.65%





Accumulated Cargo Handling on Cargo Aircrafts

Distribution by Countries

Countries	Accumulated 2024				Accumulated 2023				
	Incoming Cargo (Ton)	Outgoing Cargo (Ton)	Cargo (Ton)	Rate of Total	Incoming Cargo (Ton)	Outgoing Cargo (Ton)	Cargo (Ton)	Rate of Total	Rate of Change
BELGIUM	36,731	20,559	57,290	28.18%	22,589	22,949	45,538	29.85%	25.80%
GERMANY	25,295	19,569	44,864	22.06%	20,929	10,810	31,739	20.80%	41.35%
CHINA	22,201	2,137	24,338	11.97%	14,012	1,435	15,447	10.12%	57.55%
AZERBAIJAN	7,954	8,186	16,140	7.93%	3,972	6,141	10,113	6.63%	59.59%
UZBEKISTAN	10,334	752	11,085	5.45%		6	6		
TURKEY	7,319	1,385	8,703	4.28%	18,421	3,781	22,202	14.55%	-60.80%
SPAIN	4,713	90	4,804	2.36%	1,849	46	1,895	1.24%	153.50%
NORWAY	2,515	33	2,548	1.25%	8,584	1	8,585	5.62%	-70.32%
GEORGIA	2,336	88	2,424	1.19%	19		19	0.01%	
GREECE	1,601	527	2,127	1.04%	85	402	487	0.31%	
INDIA	2,016	70	2,086	1.02%		51	51	0.03%	
ITALY	920	1,067	1,987	0.97%	693	638	1,331	0.87%	49.28%
ETHIOPIA	1,390	590	1,980	0.97%	840	197	1,037	0.67%	90.93%
FRANCE	516	1,026	1,542	0.75%	2,689	614	3,302	2.16%	-53.30%
EGYPT	45	1,290	1,334	0.65%	14	2,454	2,469	1.61%	-45.97%
CYPRUS	579	422	1,001	0.49%	4,069	731	4,799	3.14%	-79.14%
KENYA	477	209	686	0.33%	499	40	540	0.35%	27.03%
MALTA		499	499	0.24%					
SWITZERLAND	133	133	266	0.13%	68		68	0.04%	
NETHERLANDS	128	136	263	0.12%					
UNITED KINGDOM	101	100	201	0.09%	5	86	91	0.05%	120.87%
SOUTH KOREA	201		201	0.09%					





Accumulated Cargo Handling on Cargo Aircrafts

Distribution by Countries

Countries	Accumulated 2024				Accumulated 2023				
	Incoming Cargo (Ton)	Outgoing Cargo (Ton)	Cargo (Ton)	Rate of Total	Incoming Cargo (Ton)	Outgoing Cargo (Ton)	Cargo (Ton)	Rate of Total	Rate of Change
VIETNAM	175		175	0.08%					
TANZANIA		126	126	0.06%					
CZECH REPUBLIC	89	15	104	0.05%					
KAZAKHSTAN	100		100	0.04%					
MOROCCO	91		91	0.04%	61	74	135	0.08%	-32.59%
ROMANIA	27	60	87	0.04%	3		3		
SINGAPORE	82		82	0.04%					
POLAND		81	81	0.03%	38		38	0.02%	113.15%
JAPAN	54		54	0.02%					
FINLAND		49	49	0.02%	19		19	0.01%	157.89%
BULGARIA	2	37	40	0.01%					
JORDAN		31	32	0.01%	90	121	210	0.13%	-84.76%
THAILAND		29	29	0.01%	33	140	173	0.11%	-83.23%
CANADA	21		21	0.01%	34		34	0.02%	-38.23%
LUXEMBOURG	14		14						
MACEDONIA	10		10						
SWEDEN		6	6			9	9		-33.33%
AUSTRIA		4	4			759	759	0.49%	-99.47%
MONTENEGRO	4		4						
TURKMENISTAN		4	4						
PORTUGAL		2	2						
OTHERS	14,646	1,166	15,812	7.77%	677	745	1,422	0.93%	





Accumulated Cargo Handling on Cargo Aircrafts

Distribution by Countries

Countries	Accumulated 2024				Accumulated 2023				
	Incoming Cargo (Ton)	Outgoing Cargo (Ton)	Cargo (Ton)	Rate of Total	Incoming Cargo (Ton)	Outgoing Cargo (Ton)	Cargo (Ton)	Rate of Total	Rate of Change
TOTAL	142,821	60,476	203,296		100,291	52,229	152,523		33.28%



Domestic Activity

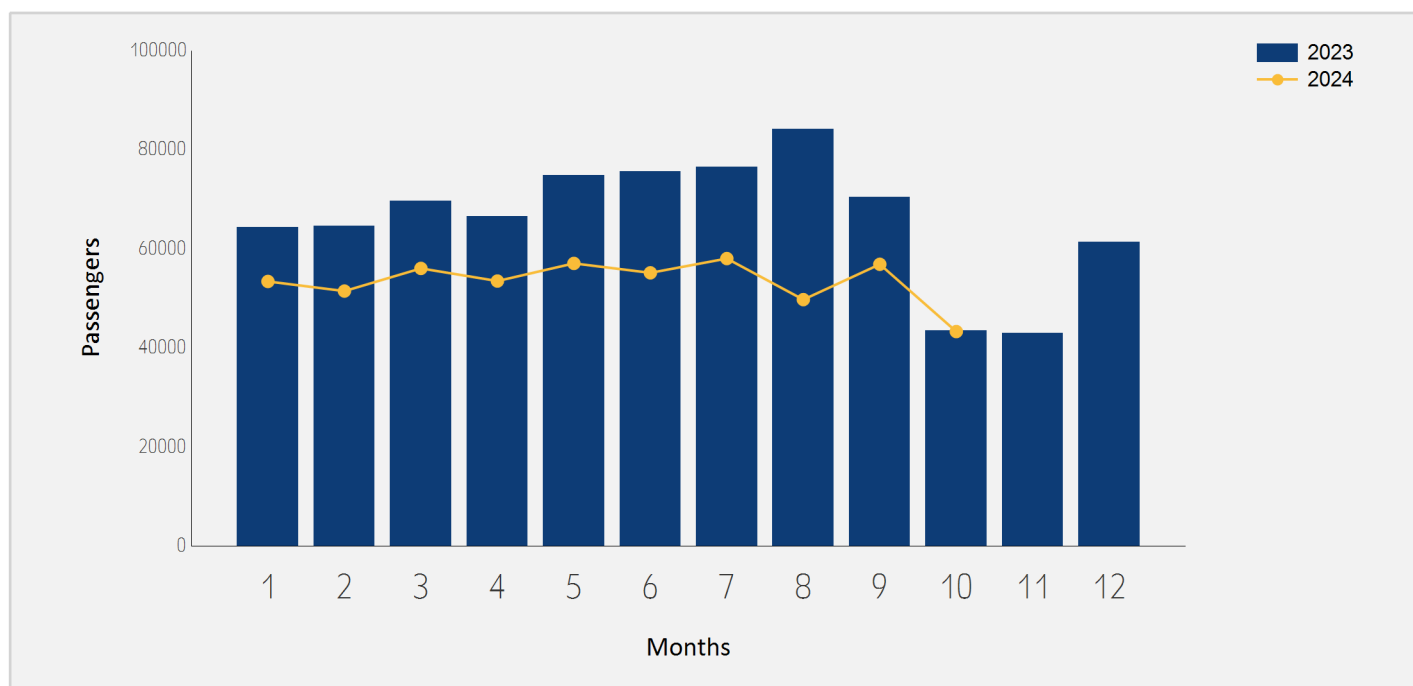




Domestic Passenger Traffic

Distribution by Months

Month	2024	2023	Rate of Change
January	53,410	64,275	-16.90%
February	51,461	64,605	-20.34%
March	56,042	69,701	-19.59%
April	53,490	66,584	-19.66%
May	57,056	74,806	-23.72%
June	55,148	75,564	-27.01%
July	58,034	76,526	-24.16%
August	49,737	84,142	-40.88%
September	56,877	70,374	-19.17%
October	43,284	43,521	-0.54%
Total	534,539	690,098	-22.54%

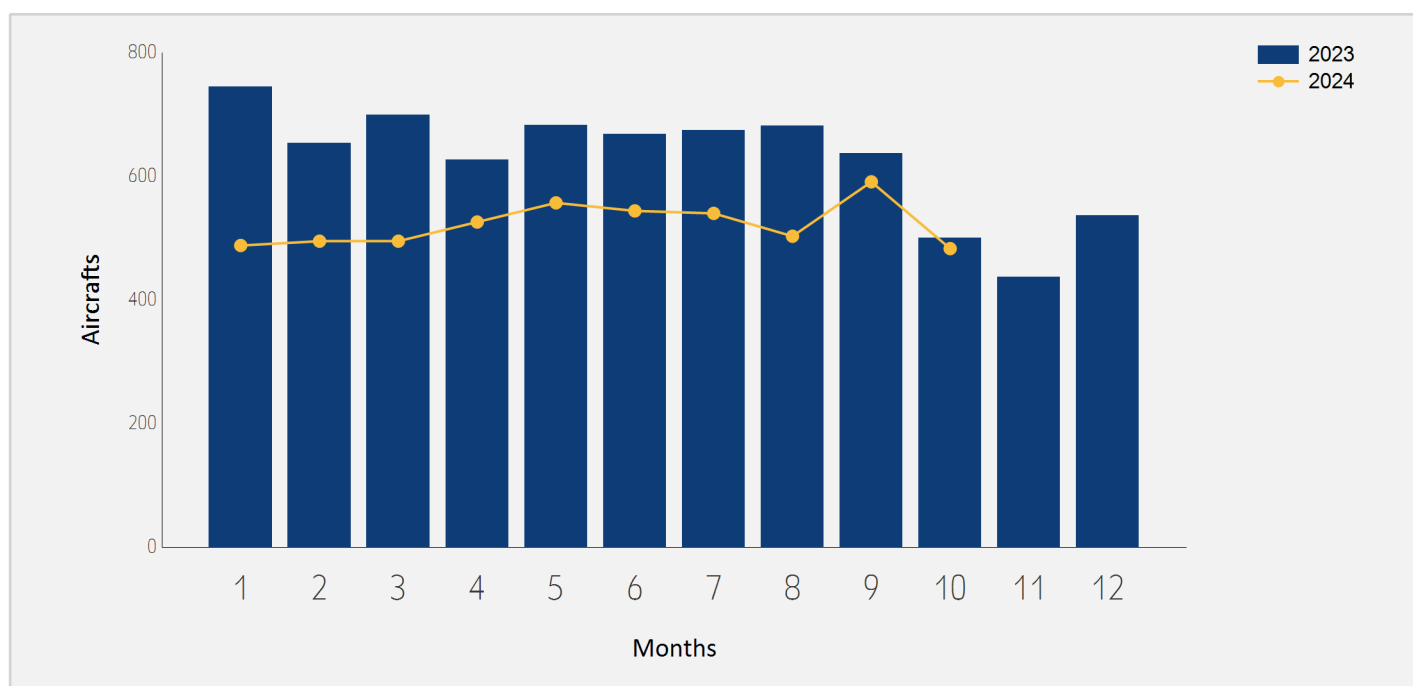




Domestic Aircrafts Traffic

Distribution by Months

Month	2024	2023	Rate of Change
January	488	745	-34.49%
February	495	654	-24.31%
March	495	699	-29.18%
April	526	627	-16.10%
May	557	683	-18.44%
June	544	668	-18.56%
July	540	674	-19.88%
August	503	682	-26.24%
September	591	637	-7.22%
October	483	500	-3.40%
Total	5,222	6,569	-20.50%





Domestic Passengers Traffic

Distribution by Airlines for October

October 2024			October 2023		
Airline	Passengers	Rate of Total	Passengers	Rate of Total	Rate of Change
IZ ARKIA ISRAELI AIRLINES	31,352	72.43%	28,676	65.89%	9.33%
6H ISRAIR AIRLINES	10,391	24.00%	14,509	33.33%	-28.38%
OTHERS	1,541	3.56%	336	0.77%	
TOTAL	43,284		43,521		-0.54%

Accumulated Domestic Passengers Traffic

Distribution by Airlines

Accumulated 2024			Accumulated 2023		
Airline	Passengers	Rate of Total	Passengers	Rate of Total	Rate of Change
IZ ARKIA ISRAELI AIRLINES	360,991	67.53%	466,900	67.65%	-22.68%
6H ISRAIR AIRLINES	170,795	31.95%	221,152	32.04%	-22.77%
OTHERS	2,753	0.51%	2,046	0.29%	34.55%
TOTAL	534,539		690,098		-22.54%





Domestic Passenger Traffic

Distribution by Destinations for October

Destination	October 2024		October 2023		Rate of Change
	Passengers	Rate of Total	Passengers	Rate of Total	
RAMON	43,200	99.80%	43,137	99.11%	0.14%
OTHERS	84	0.19%	384	0.88%	-78.12%
TOTAL	43,284		43,521		-0.54%

Accumulated Domestic Passenger Traffic

Distribution by Destinations

Destination	Accumulated 2024		Accumulated 2023		Rate of Change
	Passengers	Rate of Total	Passengers	Rate of Total	
RAMON	533,031	99.71%	684,404	99.17%	-22.11%
OTHERS	1,508	0.28%	5,694	0.82%	-73.51%
TOTAL	534,539		690,098		-22.54%

