

Monthly Report

Ben Gurion International Airport

June 2021



Israel Airport Authority

Ben Gurion International Airport

Produced by the Industry & Management Department

This report is protected by copyright and is the exclusive property of the Israel Airports Authority.

It must be emphasized that the data in the report are based on the reports of the airlines, and received under their responsibility.

The information is intended for personal use, and therefore may not be quoted or passed on to any third party without written permission from the Israel Airports Authority.

In addition, no commercial use may be made of this report.

Edit Yehoshua

Activity Coordinator

Tel. +972-3-9752017

Email: edity@iaa.gov.il

Rachel Lehava

Manager, Industrial & Management Dep.

Tel. +972-3-9752019

Email: rachelle@iaa.gov.il

Yossi Tzemach

Head, Industrial & Management Dep.

Tel. +972-3-9752020

Email: yossiz@iaa.gov.il



Dear friends and partners,

I hereby respectfully submit for your review a report summarizing the aviation activity at Ben - Gurion International Airport in June 2021.

During the month, a total of 641,295 passengers on 6,889 international and domestic flights passed through Ben- Gurion Airport.

International passenger traffic in June totaled 574,230 passengers.

International aircraft traffic totaled 6,119 flights.

International passenger traffic at Terminal 3 this month totaled 573,947 passengers. passengers on International flights from Terminal 1 totaled 283.

On domestic flights 67,065 passengers passed through Ben- Gurion Airport this month, compared with 19,115 in June 2020.

Israeli airlines carried 210,354 passengers in this month, 36.63% of all travelers passing through Ben - Gurion Airport.

The airlines which contributed the most to the increase of passenger traffic this month are: EL AL ISRAEL AIRLINES, ISRAIR AIRLINES and UNITED AIRLINES.

The Destination with the highest volume of activity was NEW YORK - J.F.KENNEDY with a total of 43,084 passengers to and from.

The country with the highest volume of activity was the UNITED STATES, with 115,089 passengers, constituting 20.04% of all activity.

Of the leading countries, the highest growth relative to last June was recorded in passenger traffic to UNITED STATES, GREECE and TURKEY.

Cargo transportation this month stood at 31,438 tons and reflects an increase of 25.08% compared to June 2020. 9,777 tons were transported in passenger aircraft and 21,661 tons in cargo aircraft.

Below you will find additional tables providing details about movements of aircraft, passengers and cargo at Ben - Gurion International Airport.

Sincerely yours,

Shmuel Zakay

Managing Director,

Ben-Gurion International Airport



Content



Aviation Activity

Aviation Activity Summary	1
International Activity Summary	2 - 4
Domestic Activity Summary	5



International Activity

Distribution By Months	7 - 8
Distribution By Airlines	9 - 15
Distribution By Countries	16 - 21
Distribution By First Destination	22 - 33



Cargo Activity

Distribution by Transporter	35
Distribution By Months	35
Distribution By Airlines	36 - 40
Distribution By Countries	41 - 43



Domestic Activity

Distribution By Months	45 - 46
Distribution By Airlines	47
Distribution By Destinations	48





Passengers and Aircrafts

Aviation Activity at Ben Gurion International Airport

International Activity

	Current Month			Accumulated Since the beginning of the year		
	June 2021	June 2020	Rate Of Change	2021	2020	Rate Of Change
Incoming Aircrafts	3,061	929		10,440	15,781	-33.84%
Outgoing Aircrafts	3,058	920		10,426	15,775	-33.90%
Total Aircrafts	6,119	1,849		20,866	31,556	-33.87%
Incoming Passengers	271,108	20,247		669,158	1,769,036	-62.17%
Outgoing Passengers	303,122	20,723		712,252	1,747,273	-59.23%
Transit Passengers	42	1		106	1,982	-94.65%
Total Passengers	574,230	40,970		1,381,410	3,516,309	-60.71%

Domestic Activity

	Current Month			Accumulated Since the beginning of the year		
	June 2021	June 2020	Rate Of Change	2021	2020	Rate Of Change
Aircrafts	770	317	142.90%	3,458	3,182	8.67%
Passengers	67,065	19,115		236,105	213,508	10.58%

International and Domestic Activity Summary

	Current Month			Accumulated Since the beginning of the year		
	June 2021	June 2020	Rate Of Change	2021	2020	Rate Of Change
Aircrafts	6,889	2,166		24,324	34,738	-29.97%
Passengers	641,295	60,085		1,617,515	3,729,817	-56.63%





Passengers and Aircrafts

Int'l Aviation Activity at Ben Gurion International Airport by Terminal

Terminal 3

	Current Month			Accumulated Since the beginning of the year		
	June 2021	June 2020	Rate of Change	2021	2020	Rate of Change
Incoming Aircrafts	3,060	929		10,439	15,781	-33.85%
Outgoing Aircrafts	3,057	920		10,266	13,672	-24.91%
Total Aircrafts	6,117	1,849		20,705	29,453	-29.70%
Incoming Passengers	271,018	20,247		669,068	1,769,036	-62.17%
Outgoing Passengers	302,929	20,723		702,092	1,450,837	-51.60%
Transit Passengers	42	1		106	1,982	-94.65%
Total Passengers	573,947	40,970		1,371,160	3,219,873	-57.41%

Terminal 1

	Current Month			Accumulated Since the beginning of the year		
	June 2021	June 2020	Rate of Change	2021	2020	Rate of Change
Incoming Aircrafts	1			1		
Outgoing Aircrafts	1			160	2,103	-92.39%
Total Aircrafts	2			161	2,103	-92.34%
Incoming Passengers	90			90		
Outgoing Passengers	193			10,160	296,436	-96.57%
Total Passengers	283			10,250	296,436	-96.54%





Passengers and Aircrafts

Int'l Aviation Activity at Ben Gurion International Airport by Flight Type

Schedule and Charter Flights

	Current Month			Accumulated Since the beginning of the year		
	June 2021	June 2020	Rate of Change	2021	2020	Rate of Change
Incoming Aircrafts	2,290	293		5,892	12,604	-53.25%
Outgoing Aircrafts	2,292	318		5,950	12,749	-53.32%
Total Aircrafts	4,582	611		11,842	25,353	-53.29%
Incoming Passengers	269,807	19,843		662,396	1,765,597	-62.48%
Outgoing Passengers	301,719	20,213		705,630	1,743,928	-59.53%
Transit Passengers	42	1		103	1,982	-94.80%
Total Passengers	571,526	40,056		1,368,026	3,509,525	-61.01%

Private Flights

	Current Month			Accumulated Since the beginning of the year		
	June 2021	June 2020	Rate of Change	2021	2020	Rate of Change
Incoming Aircrafts	412	151	172.84%	1,919	866	121.59%
Outgoing Aircrafts	406	149	172.48%	1,880	870	116.09%
Total Aircrafts	818	300	172.66%	3,799	1,736	118.83%
Incoming Passengers	1,194	261		5,773	2,127	171.41%
Outgoing Passengers	1,327	360		5,681	2,107	169.62%
Total Passengers	2,521	621		11,454	4,234	170.52%





Passengers and Aircrafts

Int'l Aviation Activity at Ben Gurion International Airport by Flight Type

Cargo Flights

	Current Month			Accumulated Since the beginning of the year		
	June 2021	June 2020	Rate of Change	2021	2020	Rate of Change
Incoming Aircrafts	345	470	-26.59%	2,476	2,194	12.85%
Outgoing Aircrafts	345	440	-21.59%	2,453	2,033	20.65%
Total Aircrafts	690	910	-24.17%	4,929	4,227	16.60%
Incoming Passengers	20	38	-47.36%	74	207	-64.25%
Outgoing Passengers	29	67	-56.71%	156	255	-38.82%
Total Passengers	49	105	-53.33%	230	462	-50.21%

Other Flights

	Current Month			Accumulated Since the beginning of the year		
	June 2021	June 2020	Rate of Change	2021	2020	Rate of Change
Incoming Aircrafts	14	15	-6.66%	153	117	30.76%
Outgoing Aircrafts	15	13	15.38%	143	123	16.26%
Total Aircrafts	29	28	3.57%	296	240	23.33%
Incoming Passengers	87	105	-17.14%	915	1,105	-17.19%
Outgoing Passengers	47	83	-43.37%	785	983	-20.14%
Total Passengers	134	188	-28.72%	1,700	2,088	-18.58%





Passengers and Aircrafts

Domestic Aviation Activity at Ben Gurion International Airport by Flight Type

Schedule Flights

	Current Month			Accumulated Since the beginning of the year		
	June 2021	June 2020	Rate of Change	2021	2020	Rate of Change
Aircrafts	663	194		2,744	2,518	8.97%
Passengers	66,999	19,047		235,354	213,114	10.43%

Private Flights

	Current Month			Accumulated Since the beginning of the year		
	June 2021	June 2020	Rate of Change	2021	2020	Rate of Change
Aircrafts	71	64	10.93%	418	272	53.67%
Passengers	59	68	-13.23%	330	225	46.66%

Other Flights

	Current Month			Accumulated Since the beginning of the year		
	June 2021	June 2020	Rate of Change	2021	2020	Rate of Change
Aircrafts	36	59	-38.98%	296	392	-24.48%
Passengers	7			421	169	149.11%





International Activity

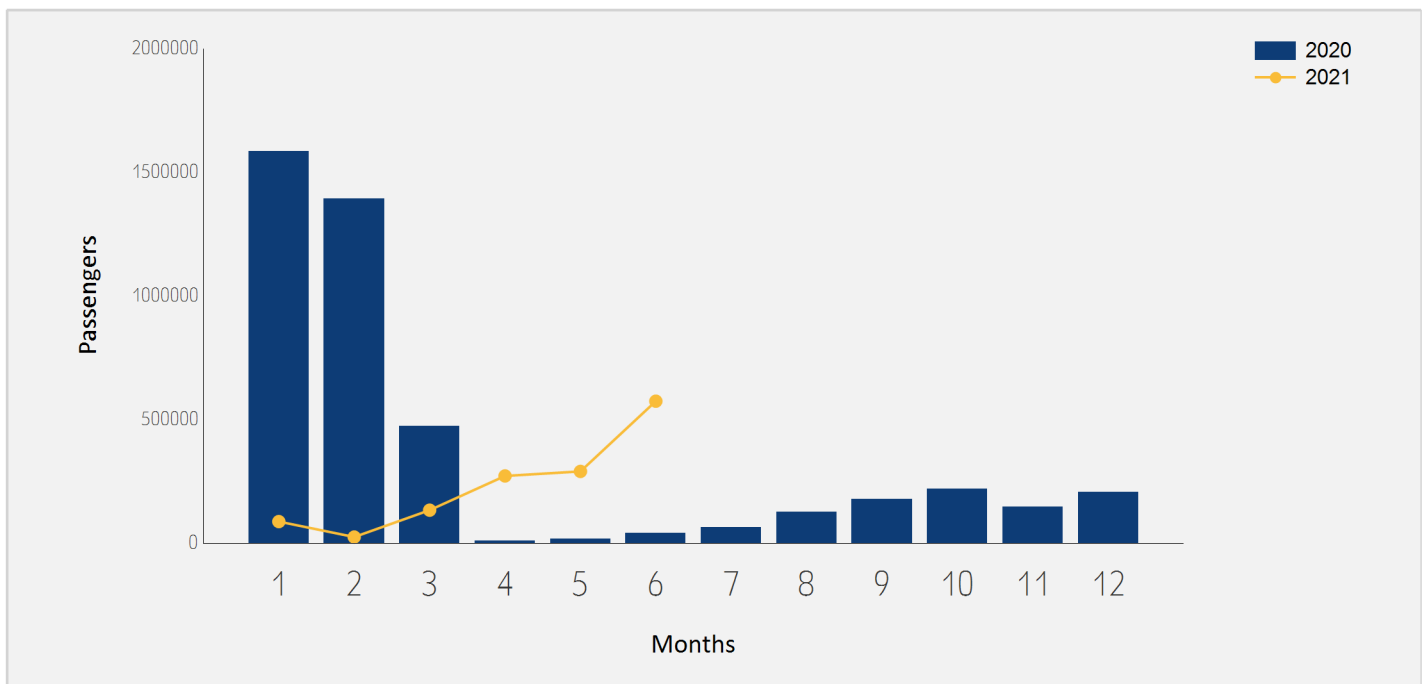




International Passenger Traffic

Distribution by Months

Months	2021	2020	Rate of Change
January	87,213	1,584,027	-94.49%
February	24,770	1,391,803	-98.22%
March	133,342	471,907	-71.74%
April	271,760	9,377	
May	290,095	18,225	
June	574,230	40,970	
Total	1,381,410	3,516,309	-60.71%

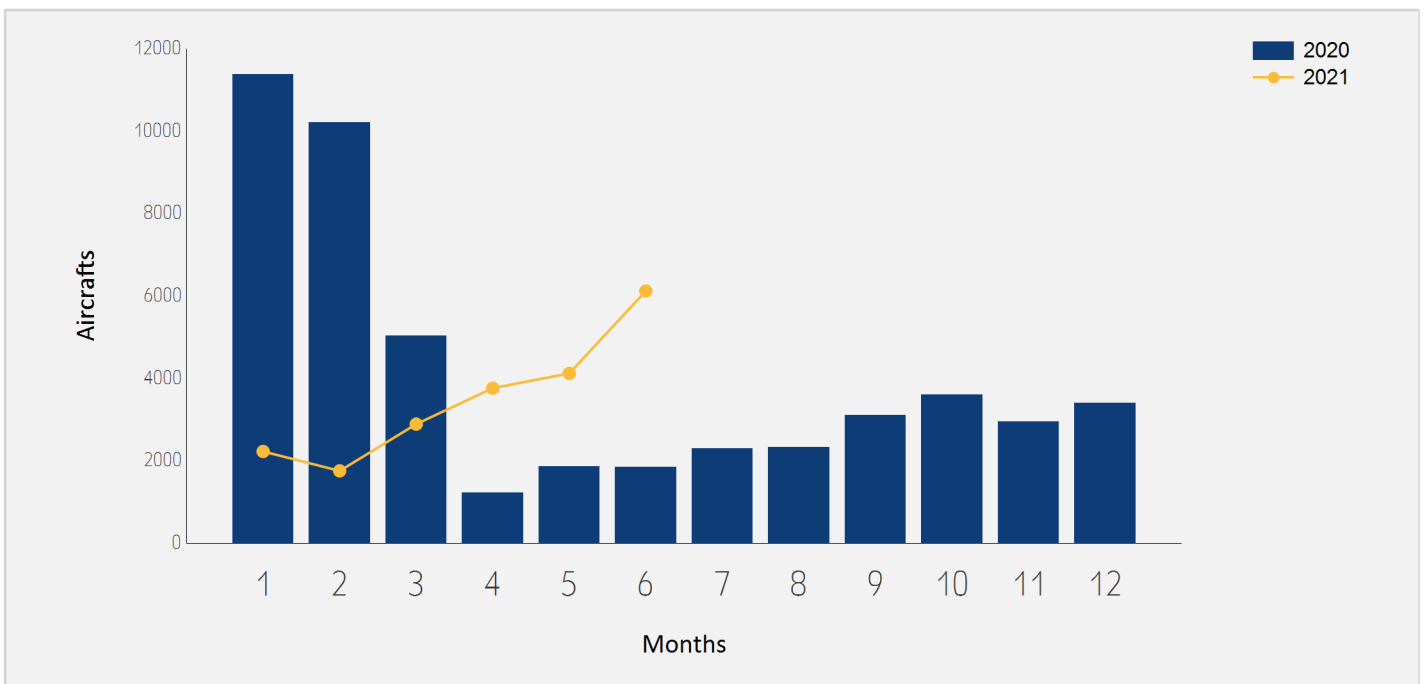




International Aircraft Traffic

Distribution by Months

Months	2021	2020	Rate of Change
January	2,225	11,374	-80.43%
February	1,753	10,207	-82.82%
March	2,888	5,038	-42.67%
April	3,761	1,225	
May	4,120	1,863	121.14%
June	6,119	1,849	
Total	20,866	31,556	-33.87%





International Passenger Traffic

Distribution by Airline for June

		June 2021		June 2020		
Airline		Passengers	Rate of Total	Passengers	Rate of Total	Rate of Change
LY	EL AL ISRAEL AIRLINES	153,143	26.66%	6,576	16.05%	
6H	ISRAIR AIRLINES	40,013	6.96%	2,096	5.11%	
UA	UNITED AIRLINES	39,316	6.84%	8,945	21.83%	
FR	RYANAIR	34,411	5.99%	475	1.15%	
W6	WIZZAIR	29,888	5.20%	4,713	11.50%	
TK	TURKISH AIRLINES	27,344	4.76%	842	2.05%	
PC	PEGASUS AIRLINES	23,706	4.12%			
LH	LUFTHANSA	20,737	3.61%	5,489	13.39%	
A3	AEGEAN AIRLINES	18,174	3.16%	768	1.87%	
IZ	ARKIA ISRAELI AIRLINES	16,636	2.89%	8	0.01%	
DL	DELTA AIRLINES	15,542	2.70%	2,981	7.27%	
BZ	BLUE BIRD AIRWAYS	12,853	2.23%			
AA	AMERICAN AIRLINES	12,349	2.15%			
PS	UKRAINE INTL AIR	9,747	1.69%	1,050	2.56%	
AF	AIR FRANCE	8,434	1.46%			
FZ	FLYDUBAI	7,633	1.32%			
KL	K.L.M.	7,295	1.27%			
VS	VIRGIN ATLANTIC AIRWAYS	6,890	1.19%			
BA	BRITISH AIRWAYS PLC	6,749	1.17%			
LX	SWISS INT'L AIRLINES	6,482	1.12%	10	0.02%	
OS	AUSTRIAN AIRLINES	5,569	0.96%	243	0.59%	





International Passenger Traffic

Distribution by Airline for June

		June 2021		June 2020		
Airline		Passengers	Rate of Total	Passengers	Rate of Total	Rate of Change
EZY	EASYJET	5,401	0.94%			
A9	GEORGIAN AIRWAYS	4,940	0.86%	143	0.34%	
TO	TRANSAVIA FRANCE	4,481	0.78%			
SU	AEROFLOT RUSSIAN AIRLINES	4,305	0.74%	892	2.17%	
B2	BELAVIA AIRLINE	4,288	0.74%	1,894	4.62%	126.39%
IB	IBERIA	3,628	0.63%			
BUC	EUROPEAN AIR CHARTER	3,433	0.59%			
LO	LOT POLISH AIRLINES	3,430	0.59%	16	0.03%	
ET	ETHIOPIAN AIRLINES	3,382	0.58%	501	1.22%	
RO	TAROM - RUMANIAN AIR TRAN	3,361	0.58%			
9U	AIR MOLDOVA	3,310	0.57%	411	1.00%	
QS	SMARTWINGS	2,943	0.51%			
AC	AIR CANADA	2,802	0.48%	1,322	3.22%	111.95%
SN	BRUSSELS AIRLINES	2,504	0.43%			
FB	BULGARIA AIR	2,376	0.41%			
EAF	ELECTRA AIRWAYS	2,367	0.41%			
UX	AIR EUROPA Lineas Aereas	2,282	0.39%			
XC	CORONDON AIRLINES	1,570	0.27%			
5F	FLYONE	1,450	0.25%			
TWI	TAILWIND AIRLINES	1,419	0.24%			
HY	UZBEKISTAN AIR	1,099	0.19%			





International Passenger Traffic

Distribution by Airline for June

		June 2021		June 2020		
Airline		Passengers	Rate of Total	Passengers	Rate of Total	Rate of Change
EY	ETIHAD AIRWAYS	982	0.17%			
HM	AIR SEYCHELLES	609	0.10%			
FH	FREEBIRD AIRLINES	564	0.09%			
N4	NORD WIND	517	0.09%			
AI	AIR INDIA	331	0.05%			
BT	AIR BALTIC	324	0.05%			
5W	WIZZ AIR ABU DHABI	217	0.03%			
PQ	SKYUP AIRLINES	211	0.03%	101	0.24%	108.91%
CY	CYPRUS AIRWAYS	133	0.02%			
AHS	AERO HANDLING	131	0.02%	109	0.26%	20.18%
	OTHERS	2,529	0.44%	1,385	3.38%	82.59%
TOTAL		574,230		40,970		





Int'l Accumulated Passenger Traffic

Distribution by Airline

		Accumulated 2021		Accumulated 2020		
Airline		Passengers	Rate of Total	Passengers	Rate of Total	Rate of Change
LY	EL AL ISRAEL AIRLINES	400,339	28.98%	814,782	23.17%	-50.86%
UA	UNITED AIRLINES	112,100	8.11%	165,599	4.70%	-32.30%
6H	ISRAIR AIRLINES	105,506	7.63%	97,493	2.77%	8.21%
TK	TURKISH AIRLINES	69,360	5.02%	197,137	5.60%	-64.81%
PC	PEGASUS AIRLINES	53,848	3.89%	85,282	2.42%	-36.85%
IZ	ARKIA ISRAELI AIRLINES	52,515	3.80%	34,642	0.98%	51.59%
LH	LUFTHANSA	51,504	3.72%	99,051	2.81%	-48.00%
DL	DELTA AIRLINES	45,476	3.29%	43,881	1.24%	3.63%
FR	RYANAIR	45,390	3.28%	208,710	5.93%	-78.25%
W6	WIZZAIR	42,804	3.09%	223,562	6.35%	-80.85%
PS	UKRAINE INTL AIR	38,905	2.81%	77,734	2.21%	-49.95%
FZ	FLYDUBAI	34,423	2.49%			
AF	AIR FRANCE	24,467	1.77%	51,752	1.47%	-52.72%
A3	AEGEAN AIRLINES	23,092	1.67%	54,437	1.54%	-57.58%
SU	AEROFLOT RUSSIAN AIRLINES	19,160	1.38%	113,833	3.23%	-83.16%
ET	ETHIOPIAN AIRLINES	18,445	1.33%	29,723	0.84%	-37.94%
BZ	BLUE BIRD AIRWAYS	18,362	1.32%	7,726	0.21%	137.66%
AA	AMERICAN AIRLINES	15,312	1.10%			
EZY	EASYJET	14,404	1.04%	241,922	6.87%	-94.04%
OS	AUSTRIAN AIRLINES	13,716	0.99%	44,594	1.26%	-69.24%
KL	K.L.M.	12,836	0.92%	26,316	0.74%	-51.22%





Int'l Accumulated Passenger Traffic

Distribution by Airline

		Accumulated 2021		Accumulated 2020		
Airline		Passengers	Rate of Total	Passengers	Rate of Total	Rate of Change
VS	VIRGIN ATLANTIC AIRWAYS	12,755	0.92%	25,246	0.71%	-49.47%
BA	BRITISH AIRWAYS PLC	12,752	0.92%	62,138	1.76%	-79.47%
LX	SWISS INT'L AIRLINES	11,359	0.82%	47,105	1.33%	-75.88%
B2	BELAVIA AIRLINE	10,950	0.79%	14,046	0.39%	-22.04%
TO	TRANSAVIA FRANCE	10,738	0.77%	61,524	1.74%	-82.54%
A9	GEORGIAN AIRWAYS	10,275	0.74%	22,913	0.65%	-55.15%
9U	AIR MOLDOVA	9,641	0.69%	8,749	0.24%	10.19%
RO	TAROM - RUMANIAN AIR TRAN	8,970	0.64%	18,083	0.51%	-50.39%
AC	AIR CANADA	8,005	0.57%	28,585	0.81%	-71.99%
IB	IBERIA	6,892	0.49%	30,252	0.86%	-77.21%
FB	BULGARIA AIR	6,338	0.45%	11,138	0.31%	-43.09%
LO	LOT POLISH AIRLINES	5,374	0.38%	46,302	1.31%	-88.39%
HM	AIR SEYCHELLES	4,667	0.33%	2,887	0.08%	61.65%
UX	AIR EUROPA Lineas Aereas	4,656	0.33%			
BUC	EUROPEAN AIR CHARTER	4,135	0.29%	2		
QS	SMARTWINGS	3,408	0.24%	17,954	0.51%	-81.01%
AI	AIR INDIA	3,045	0.22%	20,734	0.58%	-85.31%
SN	BRUSSELS AIRLINES	3,006	0.21%	22,958	0.65%	-86.90%
EAF	ELECTRA AIRWAYS	2,865	0.20%			
EY	ETIHAD AIRWAYS	2,226	0.16%			
TWI	TAILWIND AIRLINES	2,173	0.15%	12,018	0.34%	-81.91%





Int'l Accumulated Passenger Traffic

Distribution by Airline

		Accumulated 2021		Accumulated 2020		
Airline		Passengers	Rate of Total	Passengers	Rate of Total	Rate of Change
XC	CORONDON AIRLINES	1,616	0.11%	7,134	0.20%	-77.34%
5F	FLYONE	1,568	0.11%	112		
HY	UZBEKISTAN AIR	1,556	0.11%	6,593	0.18%	-76.39%
N4	NORD WIND	1,092	0.07%			
5W	WIZZ AIR ABU DHABI	1,041	0.07%			
PQ	SKYUP AIRLINES	895	0.06%	9,570	0.27%	-90.64%
BT	AIR BALTIC	620	0.04%	1,681	0.04%	-63.11%
FH	FREEBIRD AIRLINES	564	0.04%	7,343	0.20%	-92.31%
CX	CATHAY PACIFIC AIRWAYS	562	0.04%	18,164	0.51%	-96.90%
AHS	AERO HANDLING	534	0.03%	711	0.02%	-24.89%
JAV	JORDANIAN AVIATION	496	0.03%	2,029	0.05%	-75.55%
HU	HAINAN AIRLINES	440	0.03%	7,481	0.21%	-94.11%
CY	CYPRUS AIRWAYS	363	0.02%	9,192	0.26%	-96.05%
RJ	ROYAL JORDANIAN	311	0.02%	27,392	0.77%	-98.86%
ASY	ROYAL AUSTRALIAN AIR FORCE	293	0.02%			
HV	TRANSAVIA	236	0.01%	32,925	0.93%	-99.28%
TB	JET AIRFLY	200	0.01%			
PVG	PRIVILEG STYLE	188	0.01%	203		-7.38%
UL	SRILANKA AIRLINES	119				
X5	AIR EUROPA EXPRESS	109				
	OTHERS	12,413	0.89%	314,969	8.95%	-96.05%





Int'l Accumulated Passenger Traffic

Distribution by Airline

Airline	Accumulated 2021		Accumulated 2020		Rate of Change
	Passengers	Rate of Total	Passengers	Rate of Total	
TOTAL	1,381,410		3,516,309		-60.71%





International Passenger Traffic

Distribution by Israeli Airlines for June

		June 2021		June 2020		
Airlines		Passengers	Rate of Total	Passengers	Rate of Total	Rate of Change
LY	EL AL ISRAEL AIRLINES	153,143	26.66%	6,576	16.05%	
6H	ISR AIR AIRLINES	40,013	6.96%	2,096	5.11%	
IZ	ARKIA ISRAELI AIRLINES	16,636	2.89%	8	0.01%	
	OTHERS	562	0.09%	199	0.48%	182.41%
	TOTAL	210,354	36.63%	8,879	21.67%	

Int'l Accumulated Passenger Traffic

Distribution by Israeli Airlines

		Accumulated 2021		Accumulated 2020		
Airlines		Passengers	Rate of Total	Passengers	Rate of Total	Rate of Change
LY	EL AL ISRAEL AIRLINES	400,339	28.98%	814,782	23.17%	-50.86%
6H	ISR AIR AIRLINES	105,506	7.63%	97,493	2.77%	8.21%
IZ	ARKIA ISRAELI AIRLINES	52,515	3.80%	34,642	0.98%	51.59%
	OTHERS	3,314	0.23%	760	0.02%	
	TOTAL	561,674	40.65%	947,677	26.95%	-40.73%





International Passenger Traffic

Distribution by Countries for June

Countries	June 2021		June 2020		Rate of Change
	Passengers	Rate of Total	Passengers	Total of Rate	
UNITED STATES	115,089	20.04%	14,343	35.00%	
GREECE	91,701	15.96%	911	2.22%	
TURKEY	54,736	9.53%	910	2.22%	
GEORGIA	34,975	6.09%	354	0.86%	
CYPRUS	29,921	5.21%	713	1.74%	
FRANCE	29,729	5.17%	3,240	7.90%	
GERMANY	28,457	4.95%	6,099	14.88%	
UNITED KINGDOM	27,258	4.74%	2,268	5.53%	
UNITED ARAB EMIRATES	18,633	3.24%			
BULGARIA	17,462	3.04%	183	0.44%	
UKRAINE	13,732	2.39%	1,570	3.83%	
AUSTRIA	11,781	2.05%	842	2.05%	
NETHERLANDS	11,444	1.99%	40	0.09%	
ROMANIA	9,515	1.65%	1,092	2.66%	
ITALY	9,017	1.57%	124	0.30%	
RUSSIAN FEDERATION	8,295	1.44%	1,457	3.55%	
SWITZERLAND	8,199	1.42%	27	0.06%	
SPAIN	8,091	1.40%	186	0.45%	
POLAND	6,599	1.14%	21	0.05%	
HUNGARY	6,517	1.13%	742	1.81%	
MOLDOVA	4,763	0.82%	441	1.07%	
BELGIUM	4,571	0.79%	54	0.13%	





International Passenger Traffic

Distribution by Countries for June

Countries	June 2021		June 2020		
	Passengers	Rate of Total	Passengers	Total of Rate	Rate of Change
BELARUS	4,288	0.74%	1,896	4.62%	126.16%
MONTENEGRO	3,676	0.64%	13	0.03%	
ETHIOPIA	3,382	0.58%	501	1.22%	
CANADA	3,006	0.52%	1,322	3.22%	127.38%
SEYCHELLES	1,995	0.34%			
THAILAND	1,514	0.26%	281	0.68%	
CZECH REPUBLIC	1,443	0.25%			
UZBEKISTAN	1,108	0.19%	170	0.41%	
CHINA	872	0.15%	233	0.56%	
TANZANIA	686	0.11%			
ALBANIA	482	0.08%			
INDIA	443	0.07%	163	0.39%	171.77%
LATVIA	324	0.05%			
SLOVENIA	125	0.02%	1		
OTHERS	401	0.06%	773	1.88%	-48.12%
TOTAL	574,230		40,970		





Int'l Accumulated Passenger Traffic

Distribution by Countries

Countries	Accumulated 2021		Accumulated 2020		
	Passengers	Rate of Total	Passengers	Rate of Total	Rate of Change
UNITED STATES	301,687	21.83%	378,200	10.75%	-20.23%
TURKEY	128,516	9.30%	319,393	9.08%	-59.76%
GREECE	127,477	9.22%	87,972	2.50%	44.90%
FRANCE	88,597	6.41%	244,915	6.96%	-63.82%
UNITED ARAB EMIRATES	88,143	6.38%			
GERMANY	85,358	6.17%	243,524	6.92%	-64.94%
GEORGIA	82,512	5.97%	58,862	1.67%	40.17%
UNITED KINGDOM	62,402	4.51%	237,342	6.74%	-73.70%
CYPRUS	60,406	4.37%	75,123	2.13%	-19.59%
UKRAINE	58,605	4.24%	112,330	3.19%	-47.82%
RUSSIAN FEDERATION	35,143	2.54%	191,965	5.45%	-81.69%
BULGARIA	33,199	2.40%	75,239	2.13%	-55.87%
AUSTRIA	23,072	1.67%	108,954	3.09%	-78.82%
NETHERLANDS	20,701	1.49%	105,744	3.00%	-80.42%
ETHIOPIA	18,674	1.35%	29,754	0.84%	-37.23%
ROMANIA	18,318	1.32%	117,842	3.35%	-84.45%
SWITZERLAND	16,170	1.17%	108,694	3.09%	-85.12%
SPAIN	14,065	1.01%	151,137	4.29%	-90.69%
SEYCHELLES	12,954	0.93%	3,955	0.11%	
MOLDOVA	11,513	0.83%	10,448	0.29%	10.19%
BELARUS	11,178	0.80%	14,052	0.39%	-20.45%
ITALY	11,102	0.80%	175,519	4.99%	-93.67%





Int'l Accumulated Passenger Traffic

Distribution by Countries

Countries	Accumulated 2021		Accumulated 2020		
	Passengers	Rate of Total	Passengers	Rate of Total	Rate of Change
HUNGARY	10,730	0.77%	96,446	2.74%	-88.87%
POLAND	10,459	0.75%	130,399	3.70%	-91.97%
CANADA	8,238	0.59%	42,059	1.19%	-80.41%
BELGIUM	8,168	0.59%	45,703	1.29%	-82.12%
THAILAND	6,545	0.47%	40,827	1.16%	-83.96%
MONTENEGRO	5,117	0.37%	46		
CHINA	4,795	0.34%	40,736	1.15%	-88.22%
INDIA	4,193	0.30%	40,435	1.14%	-89.63%
UZBEKISTAN	1,994	0.14%	6,823	0.19%	-70.77%
JORDAN	1,918	0.13%	29,861	0.84%	-93.57%
CZECH REPUBLIC	1,875	0.13%	46,808	1.33%	-95.99%
ALBANIA	864	0.06%			
TANZANIA	724	0.05%	3,606	0.10%	-79.92%
SERBIA	715	0.05%	8,886	0.25%	-91.95%
EGYPT	704	0.05%	9,727	0.27%	-92.76%
LATVIA	624	0.04%	1,690	0.04%	-63.07%
MEXICO	572	0.04%			
CROATIA	390	0.02%	743	0.02%	-47.51%
AZERBAIJAN	263	0.01%	8,700	0.24%	-96.97%
EQUATORIAL GUINEA	210	0.01%			
PANAMA	200	0.01%	177		12.99%
GHANA	197	0.01%	34		





Int'l Accumulated Passenger Traffic

Distribution by Countries

Countries	Accumulated 2021		Accumulated 2020		
	Passengers	Rate of Total	Passengers	Rate of Total	Rate of Change
PORTUGAL	174	0.01%	19,607	0.55%	-99.11%
LITHUANIA	156	0.01%	14,195	0.40%	-98.90%
IRELAND	141	0.01%	210		-32.85%
BRAZIL	134		15,433	0.43%	-99.13%
SLOVENIA	129		29		
KAZAKHSTAN	125		39		
SOUTH AFRICA	109		12,876	0.36%	-99.15%
GIBRALTAR	106		16		
OTHERS	1,049	0.07%	49,234	1.40%	-97.86%
TOTAL	1,381,410		3,516,309		-60.71%





International Passenger Traffic

Distribution by First Destination for June

Destination	June 2021		June 2020		Rate of Change
	Passengers	Rate of Total	Passengers	Rate of Total	
NEW YORK - J.F.KENNEDY	43,084	7.50%	4,513	11.01%	
NEW YORK - NEWARK	38,782	6.75%	8,945	21.83%	
ATHENS	29,235	5.09%	790	1.92%	
PARIS-CHARLES DE GAULLE	25,173	4.38%	3,230	7.88%	
ISTANBUL-SABIHA GOKCHEN	24,872	4.33%			
LONDON - HEATHROW	24,575	4.27%			
HERAKLION	23,663	4.12%			
BATUMI	19,924	3.46%			
ISTANBUL	19,759	3.44%	879	2.14%	
RHODES-PARADISI	17,815	3.10%			
DUBAI	17,335	3.01%			
LARNACA	17,104	2.97%	499	1.21%	
FRANKFURT	16,944	2.95%	4,284	10.45%	
TBILISI	15,051	2.62%	354	0.86%	
PAPHOS	12,817	2.23%	214	0.52%	
KIEV KYIV-BORISPOL	12,333	2.14%	1,540	3.75%	
VIENNA	11,781	2.05%	842	2.05%	
AMSTERDAM	11,441	1.99%	36	0.08%	
MIAMI INTERNATIONAL	10,762	1.87%	124	0.30%	
SAN FRANCISCO	9,234	1.60%			
ANTALYA	9,160	1.59%	4		
SOFIA	8,931	1.55%	183	0.44%	





International Passenger Traffic

Distribution by First Destination for June

Destination	June 2021		June 2020		
	Passengers	Rate of Total	Passengers	Rate of Total	Rate of Change
BUCHAREST - OTOPENI	8,853	1.54%	695	1.69%	
LOS ANGELES	8,220	1.43%	624	1.52%	
ZURICH	8,142	1.41%	24	0.05%	
THESSALONIKI	7,225	1.25%	5	0.01%	
BUDAPEST	6,517	1.13%	742	1.81%	
MADRID	5,925	1.03%	82	0.20%	
MIKONOS	5,670	0.98%			
CHICAGO - O'HARE	4,774	0.83%			
CHISINAU	4,763	0.82%	441	1.07%	
CORFU	4,751	0.82%	6	0.01%	
VARNA	4,733	0.82%			
BRUSSELS	4,542	0.79%	18	0.04%	
PARIS-ORLY	4,481	0.78%			
MUNICH	4,465	0.77%	1,321	3.22%	
BERLIN BRANDENBURG INTL	4,441	0.77%			
MOSCOW	4,305	0.74%	892	2.17%	
MINSK	4,288	0.74%	1,896	4.62%	126.16%
WARSAW	4,169	0.72%	21	0.05%	
BURGAS	3,798	0.66%			
TIVAT	3,625	0.63%	13	0.03%	
MOSCOW-DOMODEDOVO	3,455	0.60%	535	1.30%	
ADDIS ABABA	3,382	0.58%	501	1.22%	





International Passenger Traffic

Distribution by First Destination for June

Destination	June 2021		June 2020		
	Passengers	Rate of Total	Passengers	Rate of Total	Rate of Change
ROME - FIUMICINO	3,226	0.56%	101	0.24%	
TORONTO	2,995	0.52%	1,322	3.22%	126.55%
LUTON	2,597	0.45%	2,220	5.41%	16.98%
KRAKOW	2,424	0.42%			
BERGAMO	2,203	0.38%			
BARCELONA	2,106	0.36%	1		
MAHE SEYCHELLES INTL	1,995	0.34%			
TREVISO	1,774	0.30%			
BADEN BADEN	1,736	0.30%			
SANTORINI	1,700	0.29%			
MILAN-MALPENSA	1,694	0.29%	6	0.01%	
PRAGUE-RUZYNE	1,443	0.25%			
ODESA	1,398	0.24%	26	0.06%	
BANGKOK INTL.-SUARNABHUM	1,377	0.23%	281	0.68%	
ABU DHABI	1,249	0.21%			
TASHKENT	1,108	0.19%	170	0.41%	
ZAKYNTHOS	1,006	0.17%			
DALAMAN	886	0.15%	20	0.04%	
SHANGHAI PUDONG	858	0.14%			
MEMMINGEN	792	0.13%			
ZANZIBAR	686	0.11%			
CLUJ NAPOCA	624	0.10%	121	0.29%	





International Passenger Traffic

Distribution by First Destination for June

Destination	June 2021		June 2020		
	Passengers	Rate of Total	Passengers	Rate of Total	Rate of Change
ST. PETERSBURG	529	0.09%	8	0.01%	
TIRANA	482	0.08%			
DELHI	331	0.05%			
RIGA	324	0.05%			
PREVEZA	313	0.05%			
SKIATHOS	210	0.03%			
HOUSTON INTERCONTINENTAL	184	0.03%	92	0.22%	100.00%
PHUKET	137	0.02%			
LJUBLJANA	125	0.02%	1		
MUMBAI	112	0.01%	163	0.39%	-31.28%
OTHERS	1,307	0.22%	2,185	5.33%	-40.18%
TOTAL	574,230		40,970		





Int'l Accumulated Passenger Traffic

Distribution by First Destination

Destination	Accumulated 2021		Accumulated 2020		Rate of Change
	Passengers	Rate of Total	Passengers	Rate of Total	
NEW YORK - J.F.KENNEDY	122,700	8.88%	106,204	3.02%	15.53%
NEW YORK - NEWARK	112,493	8.14%	162,356	4.61%	-30.71%
DUBAI	83,789	6.06%			
PARIS-CHARLES DE GAULLE	77,546	5.61%	133,502	3.79%	-41.91%
FRANKFURT	64,767	4.68%	81,562	2.31%	-20.59%
ISTANBUL-SABIHA GOKCHEN	62,977	4.55%	91,168	2.59%	-30.92%
LONDON - HEATHROW	56,076	4.05%	133,761	3.80%	-58.07%
KIEV KYIV-BORISPOL	54,916	3.97%	80,933	2.30%	-32.14%
ISTANBUL	54,779	3.96%	191,274	5.43%	-71.36%
BATUMI	49,622	3.59%	17,244	0.49%	187.76%
ATHENS	49,210	3.56%	75,796	2.15%	-35.07%
LARNACA	39,695	2.87%	40,437	1.14%	-1.83%
TBILISI	32,890	2.38%	41,618	1.18%	-20.97%
HERAKLION	30,369	2.19%	15		
RHODES-PARADISI	24,011	1.73%	5		
VIENNA	23,070	1.67%	106,214	3.02%	-78.27%
MIAMI INTERNATIONAL	21,761	1.57%	19,144	0.54%	13.67%
PAPHOS	20,711	1.49%	34,656	0.98%	-40.23%
AMSTERDAM	20,668	1.49%	98,448	2.79%	-79.00%
SOFIA	20,186	1.46%	65,079	1.85%	-68.98%
SAN FRANCISCO	19,569	1.41%	42,935	1.22%	-54.42%
MOSCOW	19,169	1.38%	113,673	3.23%	-83.13%





Int'l Accumulated Passenger Traffic

Distribution by First Destination

Destination	Accumulated 2021		Accumulated 2020		
	Passengers	Rate of Total	Passengers	Rate of Total	Rate of Change
ADDIS ABABA	18,674	1.35%	29,754	0.84%	-37.23%
BUCHAREST - OTOPENI	16,890	1.22%	97,980	2.78%	-82.76%
LOS ANGELES	16,881	1.22%	15,708	0.44%	7.46%
MOSCOW-DOMODEDOVO	14,433	1.04%	14,903	0.42%	-3.15%
ZURICH	13,952	1.00%	66,361	1.88%	-78.97%
MAHE SEYCHELLES INTL	12,954	0.93%	3,955	0.11%	
MADRID	11,624	0.84%	98,125	2.79%	-88.15%
CHISINAU	11,513	0.83%	10,448	0.29%	10.19%
MINSK	11,178	0.80%	14,052	0.39%	-20.45%
BUDAPEST	10,730	0.77%	90,302	2.56%	-88.11%
PARIS-ORLY	10,601	0.76%	54,874	1.56%	-80.68%
BERLIN BRANDENBURG INTL	10,321	0.74%			
THESSALONIKI	9,475	0.68%	11,986	0.34%	-20.94%
ANTALYA	9,312	0.67%	36,307	1.03%	-74.35%
VARNA	8,287	0.59%	8,151	0.23%	1.66%
TORONTO	8,198	0.59%	41,940	1.19%	-80.45%
BRUSSELS	7,914	0.57%	32,784	0.93%	-75.86%
MUNICH	7,498	0.54%	53,089	1.50%	-85.87%
CHICAGO - O'HARE	7,069	0.51%	4		
WARSAW	6,409	0.46%	65,474	1.86%	-90.21%
BANGKOK INTL.-SUARNABHUM	6,408	0.46%	40,827	1.16%	-84.30%
LUTON	5,876	0.42%	73,954	2.10%	-92.05%





Int'l Accumulated Passenger Traffic

Distribution by First Destination

Destination	Accumulated 2021		Accumulated 2020		
	Passengers	Rate of Total	Passengers	Rate of Total	Rate of Change
MIKONOS	5,713	0.41%	8		
TIVAT	5,015	0.36%	13		
CORFU	4,992	0.36%	8		
BURGAS	4,726	0.34%			
ROME - FIUMICINO	3,762	0.27%	101,960	2.89%	-96.31%
SHANGHAI PUDONG	3,716	0.26%	6		
ODESA	3,575	0.25%	12,245	0.34%	-70.80%
KRAKOW	3,502	0.25%	29,790	0.84%	-88.24%
DELHI	3,401	0.24%	20,995	0.59%	-83.80%
ABU DHABI	3,389	0.24%			
BERGAMO	2,877	0.20%	10,688	0.30%	-73.08%
MILAN-MALPENSA	2,196	0.15%	38,499	1.09%	-94.29%
BARCELONA	2,171	0.15%	50,654	1.44%	-95.71%
TASHKENT	1,994	0.14%	6,810	0.19%	-70.71%
SANTORINI	1,829	0.13%			
PRAGUE-RUZYNE	1,795	0.12%	46,783	1.33%	-96.16%
TREVISO	1,774	0.12%			
BADEN BADEN	1,736	0.12%	6,696	0.19%	-74.07%
AMMAN (QUEEN ALIA INT'L)	1,621	0.11%	29,629	0.84%	-94.52%
ST. PETERSBURG	1,169	0.08%	19,036	0.54%	-93.85%
CLUJ NAPOCA	1,128	0.08%	5,540	0.15%	-79.63%
DALAMAN	1,114	0.08%	592	0.01%	88.17%





Int'l Accumulated Passenger Traffic

Distribution by First Destination

Destination	Accumulated 2021		Accumulated 2020		
	Passengers	Rate of Total	Passengers	Rate of Total	Rate of Change
BASEL	1,097	0.07%	11,188	0.31%	-90.19%
GENEVA	1,031	0.07%	31,078	0.88%	-96.68%
ZAKYNTHOS	1,006	0.07%			
HOUSTON INTERCONTINENTAL	922	0.06%	333		176.87%
TIRANA	864	0.06%			
MEMMINGEN	792	0.05%	6,091	0.17%	-86.99%
BELGRADE	715	0.05%	8,886	0.25%	-91.95%
ZANZIBAR	686	0.04%	3,321	0.09%	-79.34%
HONG KONG INT'L	639	0.04%	27,820	0.79%	-97.70%
RIGA	624	0.04%	1,690	0.04%	-63.07%
CANCUN- MEXICO	532	0.03%			
DUBAI AL MAKTOUM INT AP	497	0.03%			
MUMBAI	473	0.03%	12,894	0.36%	-96.33%
AL BATEEN EXECUTIVE AP	445	0.03%			
CAIRO INTERNATIONAL	359	0.02%	7,909	0.22%	-95.46%
RZESZOW-JASIONKA	335	0.02%	1,118	0.03%	-70.03%
PREVEZA	324	0.02%			
BANGALORE	319	0.02%			
MOSCOW-VNUKOVO	294	0.02%	505	0.01%	-41.78%
SHARM EL SHEIKH	271	0.01%	25		
BEIJING	254	0.01%	8,469	0.24%	-97.00%
LIEGE	250	0.01%	285		-12.28%





Int'l Accumulated Passenger Traffic

Distribution by First Destination

Destination	Accumulated 2021		Accumulated 2020		
	Passengers	Rate of Total	Passengers	Rate of Total	Rate of Change
ZAGREB	249	0.01%	709	0.02%	-64.88%
BATA AIRPORT	210	0.01%			
SKIATHOS	210	0.01%			
KATOWICE	206	0.01%	10,523	0.29%	-98.04%
PANAMA CITY	200	0.01%	177		12.99%
BAKU HEYDAR ALIYEV INT'L	197	0.01%	8,700	0.24%	-97.73%
ACCRA-KOTOKA	197	0.01%	34		
BERLIN -SCHOENEFELD	189	0.01%	44,485	1.26%	-99.57%
IASI	186	0.01%	6,350	0.18%	-97.07%
CHENGDU	186	0.01%	2,513	0.07%	-92.59%
ANKARA-ESENBUGA	143	0.01%	39		
LYON - SATOLAS	138		14,240	0.40%	-99.03%
PHUKET	137				
SHANNON	135		144		-6.25%
SAO PAULO (GUARULHOS INT')	134		15,433	0.43%	-99.13%
LJUBLJANA	129		29		
NICE	121		6,633	0.18%	-98.17%
ALMATY	118		34		
GIBRALTAR	106		16		
JOHANNESBURG	105		12,876	0.36%	-99.18%
PODGORICA	102		33		
VILNIUS INTL	100		13,886	0.39%	-99.27%





Int'l Accumulated Passenger Traffic

Distribution by First Destination

Destination	Accumulated 2021		Accumulated 2020		
	Passengers	Rate of Total	Passengers	Rate of Total	Rate of Change
OTHERS	4,817	0.34%	380,889	10.83%	-98.73%
TOTAL	1,381,410		3,516,309		-60.71%



Cargo Activity





Cargo Handling

Distribution by Transporter

Transporter	June 2021 (Ton)	June 2020 (Ton)	Rate of Change
Cargo on Passenger Aircrafts - Incoming	4,731	915	
Cargo on Passenger Aircrafts - Outgoing	5,046	1,059	
Total Cargo on Passenger Aircrafts	9,777	1,974	
Cargo on Cargo Aircrafts - Incoming	14,528	14,527	
Cargo on Cargo Aircrafts - Outgoing	7,133	8,633	-17.37%
Total Cargo on Cargo Aircrafts	21,661	23,160	-6.47%
Total	31,438	25,134	25.08%

Distribution by Months

Month	2021 (ton)			2020 (ton)			Rate of Change
	Cargo	Mail	Total	Cargo	Mail	Total	
January	28,571	632	29,203	28,568	1,395	29,964	-2.53%
February	26,507	323	26,830	28,188	1,033	29,221	-8.18%
March	31,394	548	31,942	26,511	535	27,047	18.09%
April	28,779	745	29,524	20,673	116	20,790	42.01%
May	29,512	544	30,056	26,974	112	27,086	10.96%
June	30,856	582	31,438	24,918	216	25,134	25.08%
Total	175,619	3,374	178,993	155,832	3,407	159,242	12.40%





Cargo Handling on Passenger Aircrafts

Distribution by Airline for June

		June 2021				June 2020				
Airline		Incoming Cargo (Ton)	Outgoing Cargo (Ton)	Cargo (Ton)	Rate of Total	Incoming Cargo (Ton)	Outgoing Cargo (Ton)	Cargo (Ton)	Rate of Total	Rate of Change
LY	EL AL ISRAEL AIRLINES	1,143	1,404	2,548	26.06%	181	100	280	14.18%	
UA	UNITED AIRLINES	545	1,257	1,803	18.44%	314	459	773	39.15%	133.24%
DL	DELTA AIRLINES	372	401	772	7.89%	110	158	268	13.57%	188.05%
AA	AMERICAN AIRLINES	272	428	700	7.15%					
TK	TURKISH AIRLINES	468	76	544	5.56%	33	2	35	1.77%	
AF	AIR FRANCE	303	190	493	5.04%					
LX	SWISS INT'L AIRLINES	290	195	485	4.96%					
VS	VIRGIN ATLANTIC AIRWAYS	227	148	375	3.83%					
BA	BRITISH AIRWAYS PLC	95	233	328	3.35%					
IB	IBERIA	217	82	299	3.05%					
ET	ETHIOPIAN AIRLINES	189	108	297	3.03%	76	59	136	6.88%	118.38%
AC	AIR CANADA	103	185	287	2.93%	127	185	312	15.80%	-8.01%
EY	ETIHAD AIRWAYS	127	102	229	2.34%					
SU	AEROFLOT RUSSIAN AIRLINES	51	107	157	1.60%	12	22	34	1.72%	
PC	PEGASUS AIRLINES	102	41	143	1.46%					
AI	AIR INDIA	39	35	73	0.74%					
FZ	FLYDUBAI	36	7	44	0.45%					
LH	LUFTHANSA	26	9	35	0.35%	13	5	18	0.91%	94.44%
PS	UKRAINE INTL AIR	25	8	33	0.33%	1	1	2	0.10%	
HM	AIR SEYCHELLES	22		22	0.22%					
6H	ISRAIR AIRLINES	13	4	17	0.17%	6	29	36	1.82%	-52.77%
A3	AEGEAN AIRLINES	16		16	0.16%	3	2	5	0.25%	





Cargo Handling on Passenger Aircrafts

Distribution by Airline for June

		June 2021				June 2020				
Airline		Incoming Cargo (Ton)	Outgoing Cargo (Ton)	Cargo (Ton)	Rate of Total	Incoming Cargo (Ton)	Outgoing Cargo (Ton)	Cargo (Ton)	Rate of Total	Rate of Change
LO	LOT POLISH AIRLINES	14	2	16	0.16%					
RO	TAROM - RUMANIAN AIR TRAN	6	3	10	0.10%					
B2	BELAVIA AIRLINE	5	3	8	0.08%	8	8	16	0.81%	-50.00%
OS	AUSTRIAN AIRLINES	5	3	8	0.08%	2		2	0.10%	
HY	UZBEKISTAN AIR	3	2	5	0.05%					
SN	BRUSSELS AIRLINES	4		5	0.05%					
	OTHERS	13	12	25	0.25%	28	30	58	2.93%	-56.89%
	TOTAL	4,731	5,046	9,777		915	1,059	1,974		





Accumulated Cargo Handling on Passengers Aircrafts

Distribution by Airline

		Accumulated 2021				Accumulated 2020				
Airline		Incoming Cargo (Ton)	Outgoing Cargo (Ton)	Cargo (Ton)	Rate of Total	Incoming Cargo (Ton)	Outgoing Cargo (Ton)	Cargo (Ton)	Rate of Total	Rate of Change
LY	EL AL ISRAEL AIRLINES	4,096	5,300	9,396	28.71%	6,952	6,268	13,220	30.41%	-28.92%
UA	UNITED AIRLINES	2,392	4,147	6,538	19.98%	4,023	4,755	8,778	20.19%	-25.51%
DL	DELTA AIRLINES	1,484	1,601	3,085	9.42%	592	357	949	2.18%	
TK	TURKISH AIRLINES	1,398	327	1,725	5.27%	2,355	791	3,146	7.23%	-45.16%
ET	ETHIOPIAN AIRLINES	1,032	658	1,690	5.16%	241	145	386	0.88%	
VS	VIRGIN ATLANTIC AIRWAYS	796	549	1,346	4.11%	586	444	1,029	2.36%	30.80%
LX	SWISS INT'L AIRLINES	725	550	1,276	3.89%	1,496	821	2,317	5.33%	-44.92%
AF	AIR FRANCE	661	440	1,101	3.36%	32	67	99	0.22%	
AA	AMERICAN AIRLINES	382	594	976	2.98%					
AC	AIR CANADA	374	560	935	2.85%	994	848	1,843	4.24%	-49.26%
BA	BRITISH AIRWAYS PLC	395	528	923	2.82%	1,071	684	1,755	4.03%	-47.40%
SU	AEROFLOT RUSSIAN AIRLINES	296	477	773	2.36%	1,510	1,410	2,920	6.71%	-73.52%
IB	IBERIA	466	210	676	2.06%	709	218	927	2.13%	-27.07%
EY	ETIHAD AIRWAYS	289	292	582	1.77%					
PC	PEGASUS AIRLINES	246	148	394	1.20%	180	114	293	0.67%	34.47%
AI	AIR INDIA	103	114	217	0.66%	468	257	725	1.66%	-70.06%
FZ	FLYDUBAI	160	36	196	0.59%					
PS	UKRAINE INTL AIR	108	48	155	0.47%	67	85	152	0.34%	1.97%
LH	LUFTHANSA	73	25	99	0.30%	150	156	306	0.70%	-67.64%
HM	AIR SEYCHELLES	80	1	81	0.24%	8	2	9	0.02%	
6H	ISRAIR AIRLINES	13	32	46	0.14%	18	63	82	0.18%	-43.90%
RO	TAROM - RUMANIAN AIR TRAN	24	10	34	0.10%	37	27	65	0.14%	-47.69%





Accumulated Cargo Handling on Passengers Aircrafts

Distribution by Airline

Airline	Accumulated 2021				Accumulated 2020				
	Incoming Cargo (Ton)	Outgoing Cargo (Ton)	Cargo (Ton)	Rate of Total	Incoming Cargo (Ton)	Outgoing Cargo (Ton)	Cargo (Ton)	Rate of Total	Rate of Change
B2 BELAVIA AIRLINE	17	17	34	0.10%	21	41	62	0.14%	-45.16%
A3 AEGEAN AIRLINES	30	3	33	0.10%	27	63	90	0.20%	-63.33%
LO LOT POLISH AIRLINES	27	3	31	0.09%	65	22	87	0.20%	-64.36%
OS AUSTRIAN AIRLINES	21	6	27	0.08%	28	21	49	0.11%	-44.89%
HY UZBEKISTAN AIR	4	4	9	0.02%	71	68	139	0.31%	-93.52%
SN BRUSSELS AIRLINES	5		5	0.01%	71	18	88	0.20%	-94.31%
OTHERS	204	136	340	1.03%	2,585	1,361	3,946	9.07%	-91.38%
TOTAL	15,904	16,818	32,722		24,355	19,104	43,461		-24.70%





Cargo Handling on Cargo Aircrafts

Distribution by Airlines June

		June 2021				June 2020				
Airline		Incoming Cargo (Ton)	Outgoing Cargo (Ton)	Cargo (Ton)	Rate of Total	Incoming Cargo (Ton)	Outgoing Cargo (Ton)	Cargo (Ton)	Rate of Total	Rate of Change
ICL	C.A.L ISRAELI CARGO	3,768	1,644	5,413	24.98%	2,004	833	2,837	12.24%	90.80%
LY	EL AL ISRAEL AIRLINES	2,212	1,424	3,636	16.78%	4,066	2,464	6,530	28.19%	-44.31%
TK	TURKISH AIRLINES	2,883	495	3,378	15.59%	1,932	619	2,551	11.01%	32.41%
QY	EUROPEAN AIR TRANSPORT	1,216	849	2,064	9.52%	994	709	1,703	7.35%	21.19%
MNB	MNG CARGO AIRLINES	1,359	244	1,603	7.40%	913	245	1,158	5.00%	38.42%
AZG	SILK WAY WEST AIRLINES	625	802	1,427	6.58%	788	689	1,478	6.38%	-3.45%
LH	LUFTHANSA	590	465	1,055	4.87%	678	605	1,283	5.53%	-17.77%
FX	FEDERAL EXPRESS	536	345	881	4.06%	429	308	737	3.18%	19.53%
CX	CATHAY PACIFIC AIRWAYS	483	301	784	3.61%	159	77	236	1.01%	
3V	ASL AIRLINES BELGIUM	280	174	455	2.10%	351	222	573	2.47%	-20.59%
EY	ETIHAD AIRWAYS	187	232	419	1.93%	8		8	0.03%	
ET	ETHIOPIAN AIRLINES	123	49	172	0.79%					
3U	SICHUAN AIRLINES	62	32	94	0.43%	317	64	381	1.64%	-75.32%
M4	POSTE AIR CARGO	65	26	91	0.42%					
IB	IBERIA	64	21	86	0.39%					
PC	PEGASUS AIRLINES	34	13	46	0.21%					
F7	I FLY LTD	35	7	42	0.19%					
	OTHERS	6	9	16	0.07%	1,886	1,798	3,685	15.91%	-99.56%
	TOTAL	14,528	7,133	21,661		14,527	8,633	23,160		-6.47%





Accumulated Cargo Handling on Cargo Aircrafts

Distribution by Airline

		Accumulated 2021				Accumulated 2020				
Airline		Incoming Cargo (Ton)	Outgoing Cargo (Ton)	Cargo (Ton)	Rate of Total	Incoming Cargo (Ton)	Outgoing Cargo (Ton)	Cargo (Ton)	Rate of Total	Rate of Change
ICL	C.A.L ISRAELI CARGO	22,431	12,059	34,490	23.57%	11,157	7,223	18,381	15.87%	87.63%
LY	EL AL ISRAEL AIRLINES	15,113	10,111	25,224	17.24%	17,151	10,287	27,438	23.69%	-8.06%
TK	TURKISH AIRLINES	15,028	3,811	18,840	12.88%	7,890	2,913	10,804	9.33%	74.37%
QY	EUROPEAN AIR TRANSPORT	6,909	5,060	11,969	8.18%	5,551	3,830	9,382	8.10%	27.57%
MN B	MNG CARGO AIRLINES	7,761	1,501	9,262	6.33%	5,132	1,534	6,666	5.75%	38.94%
AZG	SILK WAY WEST AIRLINES	4,152	4,660	8,813	6.02%	4,475	3,964	8,440	7.28%	4.41%
LH	LUFTHANSA	4,345	3,017	7,362	5.03%	3,542	2,884	6,426	5.55%	14.56%
FX	FEDERAL EXPRESS	3,029	2,218	5,247	3.58%	2,541	1,994	4,534	3.91%	15.72%
CX	CATHAY PACIFIC AIRWAYS	1,554	1,133	2,687	1.83%	238	118	357	0.30%	
3V	ASL AIRLINES BELGIUM	1,586	954	2,540	1.73%	1,748	1,037	2,785	2.40%	-8.79%
ET	ETHIOPIAN AIRLINES	787	456	1,243	0.84%	158	70	228	0.19%	
IB	IBERIA	814	300	1,115	0.76%					
EY	ETIHAD AIRWAYS	466	585	1,050	0.71%	8		8		
3U	SICHUAN AIRLINES	688	246	934	0.63%	856	170	1,027	0.88%	-9.05%
PC	PEGASUS AIRLINES	490	181	671	0.45%					
F7	I FLY LTD	518	56	574	0.39%					
M4	POSTE AIR CARGO	186	91	277	0.18%					
	OTHERS	8,462	5,510	13,972	9.55%	10,858	8,449	19,307	16.67%	-27.63%
	TOTAL	94,319	51,951	146,271		71,306	44,473	115,781		26.33%





Cargo Handling on Cargo Aircrafts

Distribution by Countries for June

Country	June 2021				June 2020				
	Incoming Cargo (Ton)	Outgoing Cargo (Ton)	Cargo (Ton)	Rate of Total	Incoming Cargo (Ton)	Outgoing Cargo (Ton)	Cargo (Ton)	Rate of Total	Rate of Change
BELGIUM	3,537	2,944	6,481	29.92%	2,418	2,832	5,251	22.67%	23.42%
TURKEY	3,388	752	4,140	19.11%	2,212	926	3,139	13.55%	31.88%
GERMANY	2,860	812	3,672	16.95%	3,094	1,392	4,485	19.36%	-18.12%
CHINA	2,247	711	2,958	13.65%	2,199	253	2,452	10.58%	20.63%
AZERBAIJAN	625	802	1,427	6.58%	788	689	1,478	6.38%	-3.45%
NORWAY	918		918	4.23%	1,075		1,075	4.64%	-14.60%
EGYPT		465	465	2.14%					
UNITED ARAB EMIRATES	187	232	419	1.93%	8		8	0.03%	
FRANCE	132	237	369	1.70%	84	244	327	1.41%	12.84%
CYPRUS	296	60	356	1.64%	532	53	585	2.52%	-39.14%
ETHIOPIA	123	49	172	0.79%					
SPAIN	80	23	104	0.48%	82		82	0.35%	26.82%
ITALY	66	26	92	0.42%	114	3	117	0.50%	-21.36%
RUSSIAN FEDERATION	35	7	42	0.19%		72	72	0.31%	-41.66%
AUSTRIA	31		31	0.14%					
OTHERS	1	14	14	0.06%	1,920	2,170	4,090	17.65%	-99.65%
TOTAL	14,528	7,133	21,661		14,527	8,633	23,160		-6.47%





Accumulated Cargo Handling on Cargo Aircrafts

Distribution by Countries

Countries	Accumulated 2021				Accumulated 2020				
	Incoming Cargo (Ton)	Outgoing Cargo (Ton)	Cargo (Ton)	Rate of Total	Incoming Cargo (Ton)	Outgoing Cargo (Ton)	Cargo (Ton)	Rate of Total	Rate of Change
BELGIUM	22,127	21,882	44,009	30.08%	17,656	19,335	36,991	31.94%	18.97%
TURKEY	20,720	5,525	26,245	17.94%	10,966	5,367	16,333	14.10%	60.68%
GERMANY	15,231	6,125	21,355	14.59%	13,932	7,222	21,155	18.27%	0.94%
CHINA	15,962	3,541	19,503	13.33%	7,856	750	8,605	7.43%	126.64%
AZERBAIJAN	4,153	4,661	8,814	6.02%	4,433	3,964	8,398	7.25%	4.95%
NORWAY	5,346	50	5,396	3.68%	5,274		5,274	4.55%	2.31%
CYPRUS	2,274	433	2,706	1.84%	4,166	180	4,347	3.75%	-37.75%
EGYPT		2,056	2,056	1.40%	8		8		
FRANCE	625	1,344	1,969	1.34%	585	863	1,449	1.25%	35.88%
SPAIN	1,177	307	1,484	1.01%	1,032	439	1,471	1.27%	0.88%
RUSSIAN FEDERATION	901	563	1,464	1.00%	18	196	214	0.18%	
ETHIOPIA	787	456	1,243	0.84%	158	66	224	0.19%	
UNITED ARAB EMIRATES	466	663	1,129	0.77%	24		24	0.02%	
ITALY	365	174	539	0.36%	360	93	454	0.39%	18.72%
AUSTRIA	413		413	0.28%	3	646	649	0.56%	-36.36%
OTHERS	3,772	4,171	7,944	5.43%	4,835	5,351	10,186	8.79%	-22.01%
TOTAL	94,319	51,951	146,271		71,306	44,473	115,781		26.33%



Domestic Activity

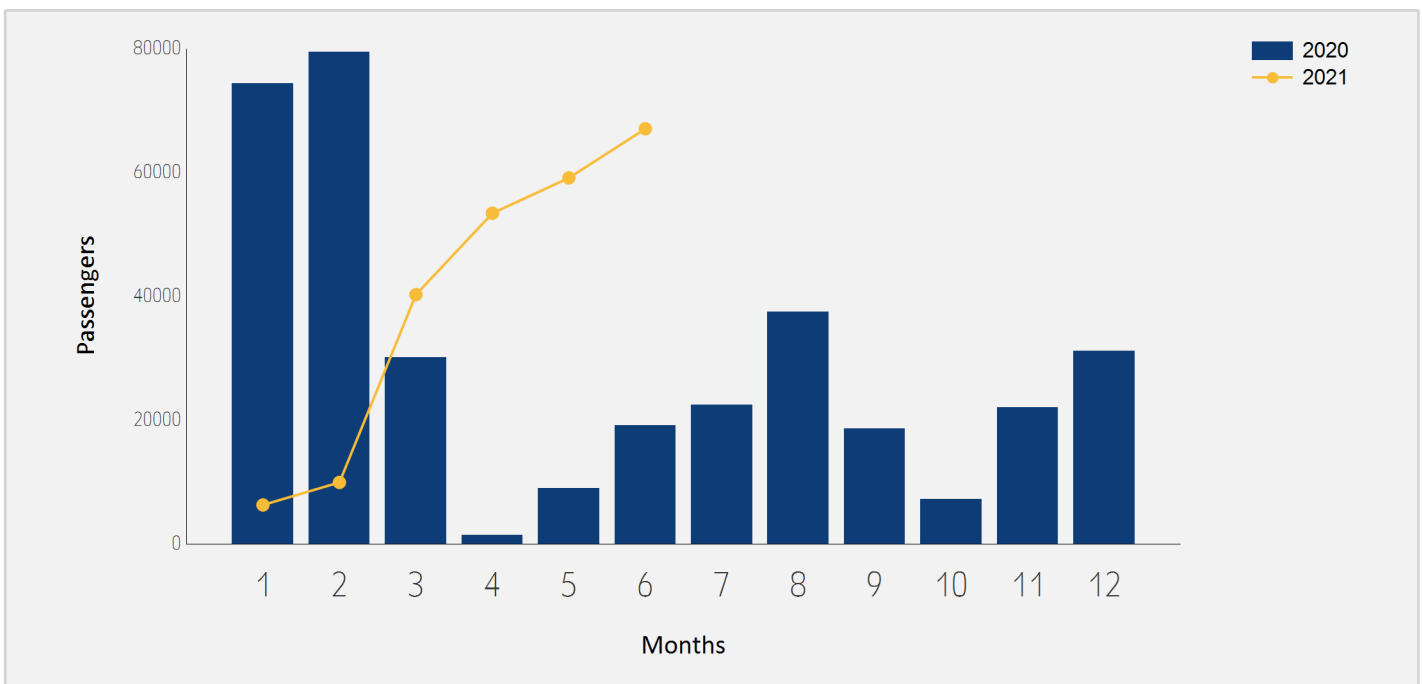




Domestic Passenger Traffic

Distribution by Months

Month	2021	2020	Rate of Change
January	6,294	74,380	-91.53%
February	9,936	79,475	-87.49%
March	40,263	30,137	33.59%
April	53,421	1,412	
May	59,126	8,989	
June	67,065	19,115	
Total	236,105	213,508	10.58%

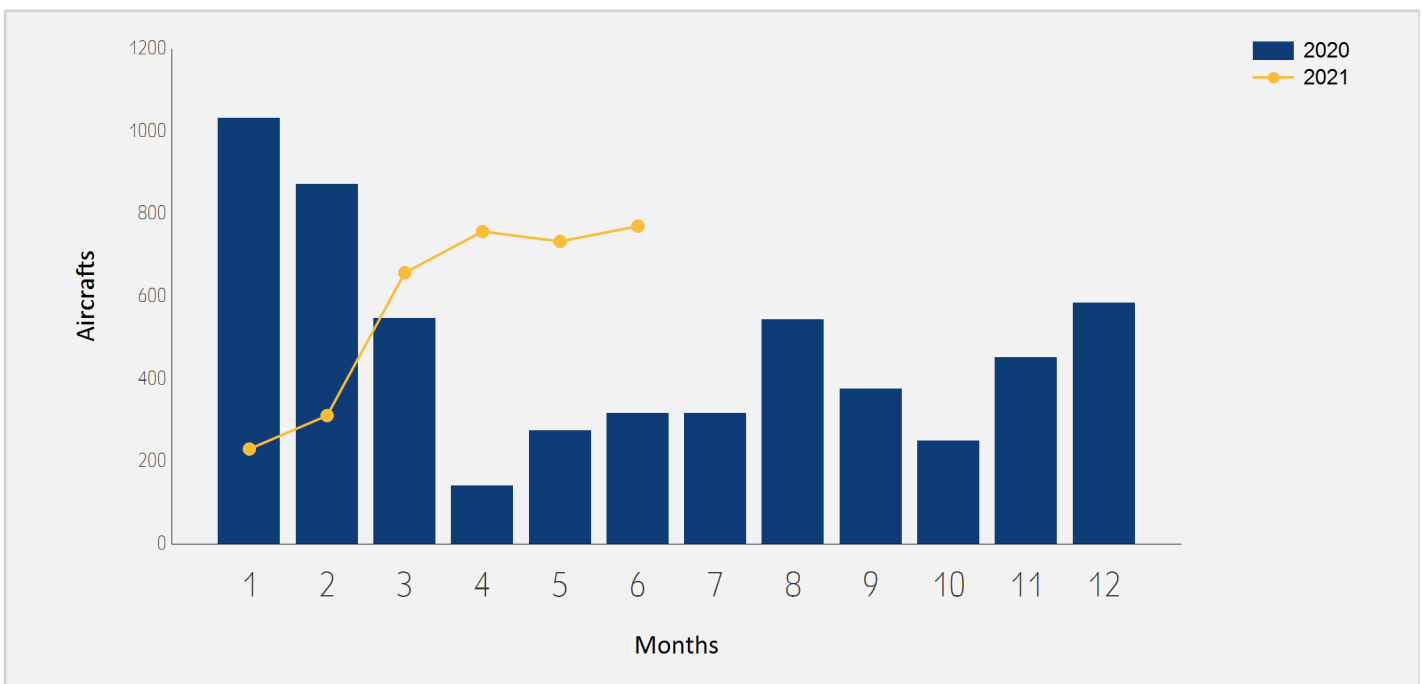




Domestic Aircrafts Traffic

Distribution by Months

Month	2021	2020	Rate of Change
January	230	1,032	-77.71%
February	311	871	-64.29%
March	657	547	20.10%
April	757	141	
May	733	274	167.51%
June	770	317	142.90%
Total	3,458	3,182	8.67%





Domestic Passengers Traffic

Distribution by Airlines for June

		June 2021		June 2020		
Airline		Passengers	Rate of Total	Passengers	Rate of Total	Rate of Change
IZ	ARKIA ISRAELI AIRLINES	40,138	59.84%			
6H	ISRAIR AIRLINES	26,861	40.05%	19,047	99.64%	41.02%
	OTHERS	66	0.09%	68	0.35%	-2.94%
	TOTAL	67,065		19,115		

Accumulated Domestic Passengers Traffic

Distribution by Airlines

		Accumulated 2021		Accumulated 2020		
Airline		Passengers	Rate of Total	Passengers	Rate of Total	Rate of Change
IZ	ARKIA ISRAELI AIRLINES	127,891	54.16%	141,463	66.25%	-9.59%
6H	ISRAIR AIRLINES	107,858	45.68%	71,804	33.63%	50.21%
	OTHERS	356	0.15%	241	0.11%	47.71%
	TOTAL	236,105		213,508		10.58%





Domestic Passenger Traffic

Distribution by Destinations for June

Destination	June 2021		June 2020		Rate of Change
	Passengers	Rate of Total	Passengers	Rate of Total	
RAMON	67,025	99.94%	19,071	99.76%	
OTHERS	40	0.05%	44	0.23%	-9.09%
TOTAL	67,065		19,115		

Accumulated Domestic Passenger Traffic

Distribution by Destinations

Destination	Accumulated 2021		Accumulated 2020		Rate of Change
	Passengers	Rate of Total	Passengers	Rate of Total	
RAMON	235,631	99.79%	212,207	99.39%	11.03%
OTHERS	474	0.20%	1,301	0.60%	-63.56%
TOTAL	236,105		213,508		10.58%

