

May 2021

Monthly Report

Ben Gurion International Airport



Israel Airport Authority

Ben Gurion International Airport

Produced by the Industry & Management Department

This report is protected by copyright and is the exclusive property of the Israel Airports Authority.

It must be emphasized that the data in the report are based on the reports of the airlines, and received under their responsibility.

The information is intended for personal use, and therefore may not be quoted or passed on to any third party without written permission from the Israel Airports Authority.

In addition, no commercial use may be made of this report.

Edit Yehoshua

Activity Coordinator

Tel. +972-3-9752017

Email: edity@iaa.gov.il

Rachel Lehava

Manager, Industrial & Management Dep.

Tel. +972-3-9752019

Email: rachelle@iaa.gov.il

Yossi Tzemach

Head, Industrial & Management Dep.

Tel. +972-3-9752020

Email: yossiz@iaa.gov.il



Dear friends and partners,

I hereby respectfully submit for your review a report summarizing the aviation activity at Ben - Gurion International Airport in May 2021.

During the month, a total of 351,733 passengers on 4,851 international and domestic flights passed through Ben- Gurion Airport.

International passenger traffic in May totaled 292,609 passengers.

International aircraft traffic totaled 4,148 flights.

On domestic flights 59,124 passengers passed through Ben- Gurion Airport this month, compared with 8,989.

Israeli airlines carried 155,805 passengers in this month, 53.24% of all travelers passing through Ben - Gurion Airport.

The airlines which contributed the most to the increase of passenger traffic this month are: EL AL ISRAEL AIRLINES, ISRAIR AIRLINES and UNITED AIRLINES.

The Destination with the highest volume of activity was DUBAI with a total of 29,073 passengers.

The country with the highest volume of activity was the UNITED STATES, with 65,508 passengers, constituting 22.38% of all activity.

Of the leading countries, the highest growth relative to last May was recorded in passenger traffic to UNITED STATES, UNITED ARAB EMIRATES and GREECE.

Cargo transportation this month stood at 30,265 tons and reflects an increase of 11.73% compared to May 2020. 6,909 tons were transported in passenger aircraft and 23,356 tons in cargo aircraft.

Below you will find additional tables providing details about movements of aircraft, passengers and cargo at Ben - Gurion International Airport.

Sincerely yours,

Shmuel Zakay

Managing Director,

Ben-Gurion International Airport



Content



Aviation Activity

| | |
|--------------------------------|-------|
| Aviation Activity Summary | 1 |
| International Activity Summary | 2 - 4 |
| Domestic Activity Summary | 5 |



International Activity

| | |
|-----------------------------------|---------|
| Distribution By Months | 7 - 8 |
| Distribution By Airlines | 9 - 15 |
| Distribution By Countries | 16 - 21 |
| Distribution By First Destination | 22 - 31 |



Cargo Activity

| | |
|-----------------------------|---------|
| Distribution by Transporter | 33 |
| Distribution By Months | 33 |
| Distribution By Airlines | 34 - 38 |
| Distribution By Countries | 39 - 41 |



Domestic Activity

| | |
|------------------------------|---------|
| Distribution By Months | 43 - 44 |
| Distribution By Airlines | 45 |
| Distribution By Destinations | 46 |





Passengers and Aircrafts

Aviation Activity at Ben Gurion International Airport

International Activity

| | Current Month | | | Accumulated Since the beginning of the year | | |
|-------------------------|----------------|---------------|----------------|---|------------------|----------------|
| | May 2021 | May 2020 | Rate Of Change | 2021 | 2020 | Rate Of Change |
| Incoming Aircrafts | 2,075 | 935 | 121.92% | 7,409 | 14,852 | -50.11% |
| Outgoing Aircrafts | 2,073 | 928 | 123.38% | 7,366 | 14,855 | -50.41% |
| Total Aircrafts | 4,148 | 1,863 | 122.65% | 14,775 | 29,707 | -50.26% |
| Incoming Passengers | 138,366 | 9,735 | | 400,567 | 1,748,789 | -77.09% |
| Outgoing Passengers | 154,243 | 8,490 | | 409,120 | 1,726,550 | -76.30% |
| Transit Passengers | 19 | | | 64 | 1,981 | -96.76% |
| Total Passengers | 292,609 | 18,225 | | 809,687 | 3,475,339 | -76.70% |

Domestic Activity

| | Current Month | | | Accumulated Since the beginning of the year | | |
|------------|---------------|----------|----------------|---|---------|----------------|
| | May 2021 | May 2020 | Rate Of Change | 2021 | 2020 | Rate Of Change |
| Aircrafts | 703 | 274 | 156.56% | 2,658 | 2,866 | -7.25% |
| Passengers | 59,124 | 8,989 | | 169,038 | 194,393 | -13.04% |

International and Domestic Activity Summary

| | Current Month | | | Accumulated Since the beginning of the year | | |
|------------|---------------|----------|----------------|---|-----------|----------------|
| | May 2021 | May 2020 | Rate Of Change | 2021 | 2020 | Rate Of Change |
| Aircrafts | 4,851 | 2,137 | 127.00% | 17,433 | 32,573 | -46.48% |
| Passengers | 351,733 | 27,214 | | 978,725 | 3,669,732 | -73.32% |





Passengers and Aircrafts

Int'l Aviation Activity at Ben Gurion International Airport by Terminal

Terminal 3

| | Current Month | | | Accumulated Since the beginning of the year | | |
|-------------------------|----------------|---------------|----------------|---|------------------|----------------|
| | May 2021 | May 2020 | Rate of Change | 2021 | 2020 | Rate of Change |
| Incoming Aircrafts | 2,075 | 935 | 121.92% | 7,409 | 14,852 | -50.11% |
| Outgoing Aircrafts | 2,073 | 928 | 123.38% | 7,207 | 12,752 | -43.48% |
| Total Aircrafts | 4,148 | 1,863 | 122.65% | 14,616 | 27,604 | -47.05% |
| Incoming Passengers | 138,366 | 9,735 | | 400,567 | 1,748,789 | -77.09% |
| Outgoing Passengers | 154,243 | 8,490 | | 399,153 | 1,430,114 | -72.08% |
| Transit Passengers | 19 | | | 64 | 1,981 | -96.76% |
| Total Passengers | 292,609 | 18,225 | | 799,720 | 3,178,903 | -74.84% |

Terminal 1

| | Current Month | | | Accumulated Since the beginning of the year | | |
|-------------------------|---------------|----------|----------------|---|----------------|----------------|
| | May 2021 | May 2020 | Rate of Change | 2021 | 2020 | Rate of Change |
| Incoming Aircrafts | | | | | | |
| Outgoing Aircrafts | | | | 159 | 2,103 | -92.43% |
| Total Aircrafts | | | | 159 | 2,103 | -92.43% |
| Incoming Passengers | | | | | | |
| Outgoing Passengers | | | | 9,967 | 296,436 | -96.63% |
| Total Passengers | | | | 9,967 | 296,436 | -96.63% |





Passengers and Aircrafts

Int'l Aviation Activity at Ben Gurion International Airport by Flight Type

Schedule and Charter Flights

| | Current Month | | | Accumulated Since the beginning of the year | | |
|-------------------------|----------------|---------------|----------------|---|------------------|----------------|
| | May 2021 | May 2020 | Rate of Change | 2021 | 2020 | Rate of Change |
| Incoming Aircrafts | 1,340 | 155 | | 3,631 | 12,311 | -70.50% |
| Outgoing Aircrafts | 1,344 | 259 | | 3,658 | 12,431 | -70.57% |
| Total Aircrafts | 2,684 | 414 | | 7,289 | 24,742 | -70.53% |
| Incoming Passengers | 137,164 | 9,449 | | 395,036 | 1,745,754 | -77.37% |
| Outgoing Passengers | 152,985 | 8,210 | | 403,813 | 1,723,715 | -76.57% |
| Transit Passengers | 19 | | | 61 | 1,981 | -96.92% |
| Total Passengers | 290,149 | 17,659 | | 798,849 | 3,469,469 | -76.97% |

Private Flights

| | Current Month | | | Accumulated Since the beginning of the year | | |
|-------------------------|---------------|------------|----------------|---|--------------|----------------|
| | May 2021 | May 2020 | Rate of Change | 2021 | 2020 | Rate of Change |
| Incoming Aircrafts | 328 | 116 | 182.75% | 1,507 | 715 | 110.76% |
| Outgoing Aircrafts | 326 | 114 | 185.96% | 1,472 | 721 | 104.16% |
| Total Aircrafts | 654 | 230 | 184.34% | 2,979 | 1,436 | 107.45% |
| Incoming Passengers | 1,040 | 256 | | 4,647 | 1,866 | 149.03% |
| Outgoing Passengers | 1,099 | 233 | | 4,442 | 1,747 | 154.26% |
| Total Passengers | 2,139 | 489 | | 9,089 | 3,613 | 151.56% |





Passengers and Aircrafts

Int'l Aviation Activity at Ben Gurion International Airport by Flight Type

Cargo Flights

| | Current Month | | | Accumulated Since the beginning of the year | | |
|-------------------------|---------------|--------------|----------------|---|--------------|----------------|
| | May 2021 | May 2020 | Rate of Change | 2021 | 2020 | Rate of Change |
| Incoming Aircrafts | 381 | 659 | -42.18% | 2,131 | 1,724 | 23.60% |
| Outgoing Aircrafts | 377 | 551 | -31.57% | 2,108 | 1,593 | 32.32% |
| Total Aircrafts | 758 | 1,210 | -37.35% | 4,239 | 3,317 | 27.79% |
| Incoming Passengers | 18 | 14 | 28.57% | 55 | 169 | -67.45% |
| Outgoing Passengers | 31 | 31 | | 127 | 188 | -32.44% |
| Total Passengers | 49 | 45 | 8.88% | 182 | 357 | -49.01% |

Other Flights

| | Current Month | | | Accumulated Since the beginning of the year | | |
|-------------------------|---------------|-----------|----------------|---|--------------|----------------|
| | May 2021 | May 2020 | Rate of Change | 2021 | 2020 | Rate of Change |
| Incoming Aircrafts | 26 | 5 | | 140 | 102 | 37.25% |
| Outgoing Aircrafts | 26 | 4 | | 128 | 110 | 16.36% |
| Total Aircrafts | 52 | 9 | | 268 | 212 | 26.41% |
| Incoming Passengers | 144 | 16 | | 829 | 1,000 | -17.10% |
| Outgoing Passengers | 128 | 16 | | 738 | 900 | -18.00% |
| Total Passengers | 272 | 32 | | 1,567 | 1,900 | -17.52% |





Passengers and Aircrafts

Domestic Aviation Activity at Ben Gurion International Airport by Flight Type

Schedule Flights

| | Current Month | | | Accumulated Since the beginning of the year | | |
|------------|---------------|----------|----------------|---|---------|----------------|
| | May 2021 | May 2020 | Rate of Change | 2021 | 2020 | Rate of Change |
| Aircrafts | 633 | 143 | | 2,050 | 2,324 | -11.79% |
| Passengers | 59,004 | 8,788 | | 168,355 | 194,067 | -13.24% |

Private Flights

| | Current Month | | | Accumulated Since the beginning of the year | | |
|------------|---------------|----------|----------------|---|------|----------------|
| | May 2021 | May 2020 | Rate of Change | 2021 | 2020 | Rate of Change |
| Aircrafts | 43 | 64 | -32.81% | 347 | 208 | 66.82% |
| Passengers | 34 | 43 | -20.93% | 269 | 157 | 71.33% |

Other Flights

| | Current Month | | | Accumulated Since the beginning of the year | | |
|------------|---------------|----------|----------------|---|------|----------------|
| | May 2021 | May 2020 | Rate of Change | 2021 | 2020 | Rate of Change |
| Aircrafts | 27 | 67 | -59.70% | 261 | 334 | -21.85% |
| Passengers | 86 | 158 | -45.56% | 414 | 169 | 144.97% |





International Activity

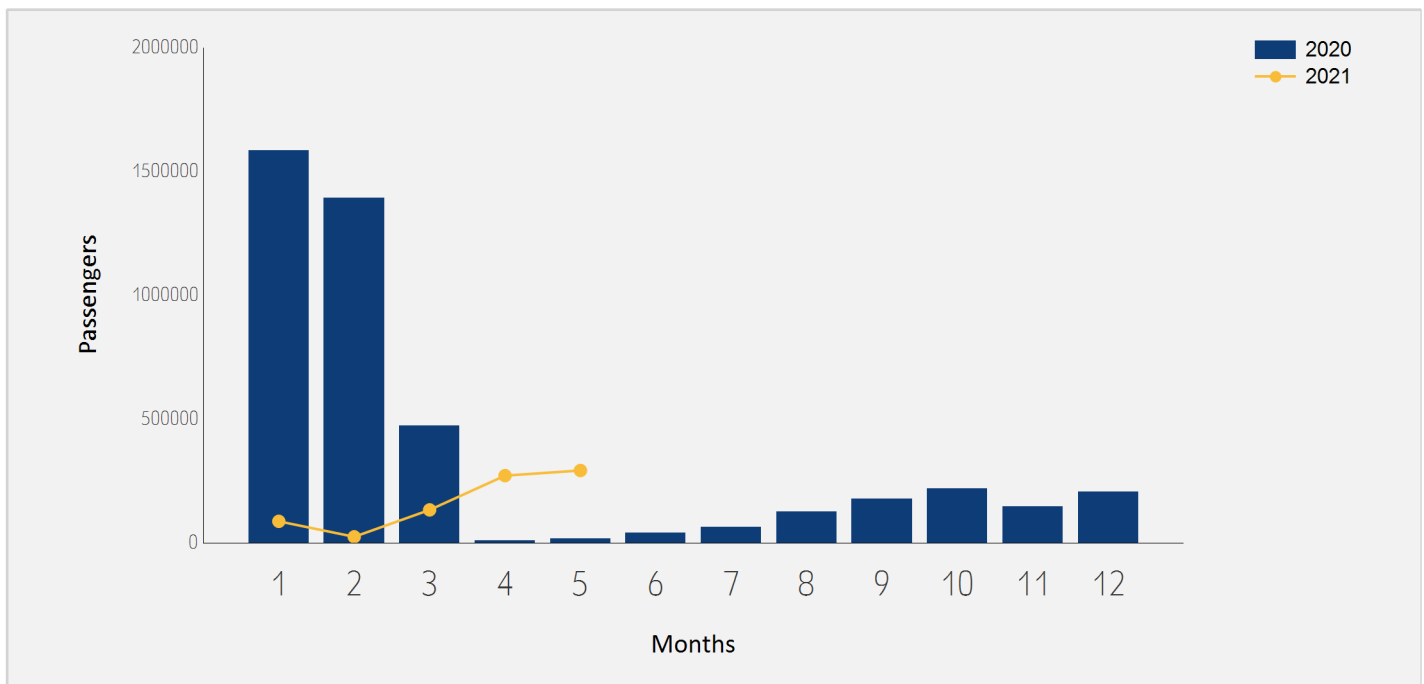




International Passenger Traffic

Distribution by Months

| Months | 2021 | 2020 | Rate of Change |
|--------------|----------------|------------------|----------------|
| January | 87,213 | 1,584,027 | -94.49% |
| February | 24,770 | 1,391,803 | -98.22% |
| March | 133,342 | 471,907 | -71.74% |
| April | 271,753 | 9,377 | |
| May | 292,609 | 18,225 | |
| Total | 809,687 | 3,475,339 | -76.70% |

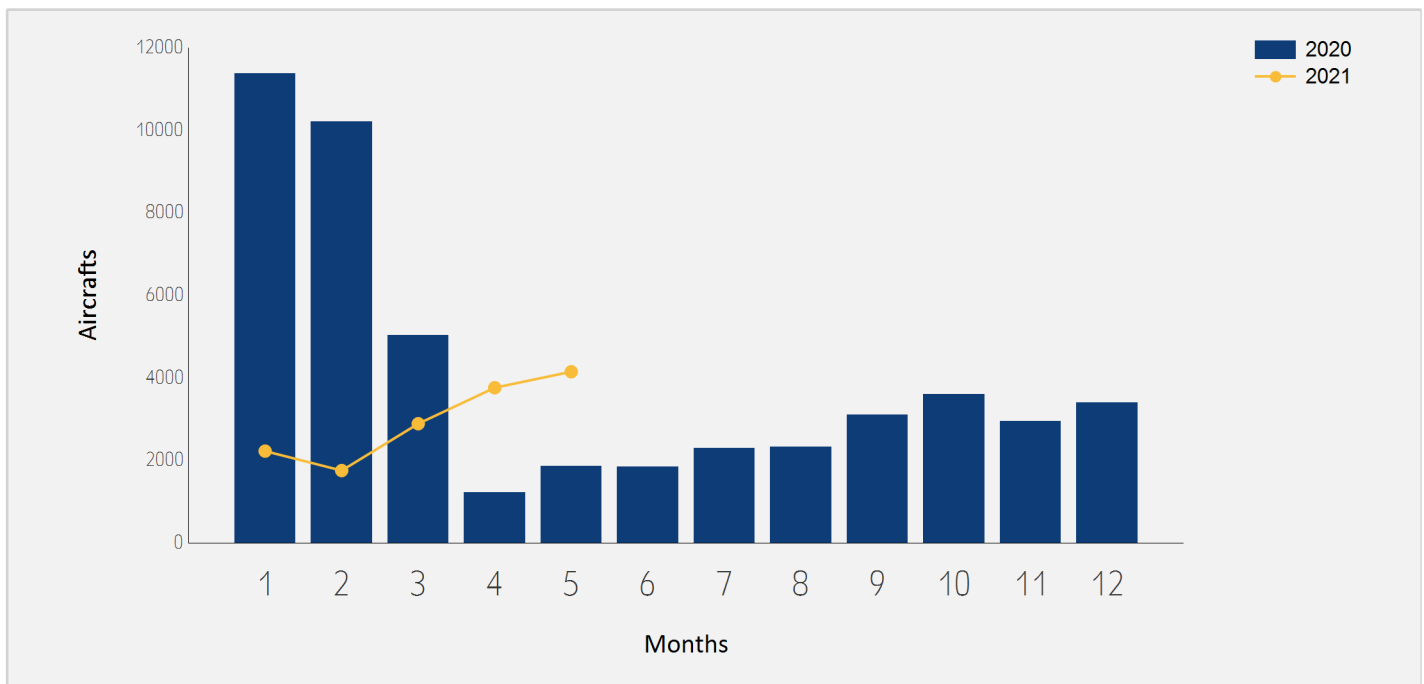




International Aircraft Traffic

Distribution by Months

| Months | 2021 | 2020 | Rate of Change |
|--------------|---------------|---------------|----------------|
| January | 2,225 | 11,374 | -80.43% |
| February | 1,753 | 10,207 | -82.82% |
| March | 2,888 | 5,038 | -42.67% |
| April | 3,761 | 1,225 | |
| May | 4,148 | 1,863 | 122.65% |
| Total | 14,775 | 29,707 | -50.26% |





International Passenger Traffic

Distribution by Airline for May

| | | May 2021 | | May 2020 | | |
|---------|---------------------------|------------|---------------|------------|---------------|----------------|
| Airline | | Passengers | Rate of Total | Passengers | Rate of Total | Rate of Change |
| LY | EL AL ISRAEL AIRLINES | 116,536 | 39.82% | 2,833 | 15.54% | |
| 6H | ISRAIR AIRLINES | 24,906 | 8.51% | 2,408 | 13.21% | |
| UA | UNITED AIRLINES | 19,646 | 6.71% | 6,080 | 33.36% | |
| IZ | ARKIA ISRAELI AIRLINES | 13,840 | 4.72% | 2 | 0.01% | |
| FZ | FLYDUBAI | 11,005 | 3.76% | | | |
| LH | LUFTHANSA | 8,216 | 2.80% | | | |
| TK | TURKISH AIRLINES | 7,826 | 2.67% | | | |
| DL | DELTA AIRLINES | 7,406 | 2.53% | | | |
| W6 | WIZZAIR | 6,546 | 2.23% | 2,316 | 12.70% | 182.64% |
| SU | AEROFLOT RUSSIAN AIRLINES | 5,445 | 1.86% | 78 | 0.42% | |
| BZ | BLUE BIRD AIRWAYS | 5,394 | 1.84% | | | |
| FR | RYANAIR | 4,654 | 1.59% | | | |
| PC | PEGASUS AIRLINES | 4,432 | 1.51% | | | |
| A9 | GEORGIAN AIRWAYS | 4,077 | 1.39% | | | |
| PS | UKRAINE INTL AIR | 3,669 | 1.25% | 728 | 3.99% | |
| AF | AIR FRANCE | 3,269 | 1.11% | | | |
| A3 | AEGEAN AIRLINES | 3,225 | 1.10% | | | |
| B2 | BELAVIA AIRLINE | 3,170 | 1.08% | 1,522 | 8.35% | 108.27% |
| BA | BRITISH AIRWAYS PLC | 3,152 | 1.07% | | | |
| ET | ETHIOPIAN AIRLINES | 3,148 | 1.07% | 417 | 2.28% | |
| AA | AMERICAN AIRLINES | 2,963 | 1.01% | | | |





International Passenger Traffic

Distribution by Airline for May

| | | May 2021 | | May 2020 | | |
|---------|---------------------------|------------|---------------|------------|---------------|----------------|
| Airline | | Passengers | Rate of Total | Passengers | Rate of Total | Rate of Change |
| OS | AUSTRIAN AIRLINES | 2,567 | 0.87% | | | |
| 9U | AIR MOLDOVA | 2,497 | 0.85% | 250 | 1.37% | |
| KL | K.L.M. | 2,043 | 0.69% | | | |
| LX | SWISS INT'L AIRLINES | 1,994 | 0.68% | | | |
| TO | TRANSAVIA FRANCE | 1,681 | 0.57% | | | |
| FB | BULGARIA AIR | 1,675 | 0.57% | | | |
| VS | VIRGIN ATLANTIC AIRWAYS | 1,595 | 0.54% | | | |
| LO | LOT POLISH AIRLINES | 1,500 | 0.51% | 22 | 0.12% | |
| RO | TAROM - RUMANIAN AIR TRAN | 1,453 | 0.49% | | | |
| AC | AIR CANADA | 1,216 | 0.41% | | | |
| HM | AIR SEYCHELLES | 1,166 | 0.39% | | | |
| EZY | EASYJET | 1,161 | 0.39% | | | |
| IB | IBERIA | 1,069 | 0.36% | | | |
| UX | AIR EUROPA Lineas Aereas | 863 | 0.29% | | | |
| EY | ETIHAD AIRWAYS | 717 | 0.24% | | | |
| BUC | EUROPEAN AIR CHARTER | 702 | 0.23% | 1 | | |
| SN | BRUSSELS AIRLINES | 502 | 0.17% | | | |
| EAF | ELECTRA AIRWAYS | 498 | 0.17% | | | |
| AI | AIR INDIA | 483 | 0.16% | 209 | 1.14% | 131.10% |
| 5W | WIZZ AIR ABU DHABI | 471 | 0.16% | | | |
| HY | UZBEKISTAN AIR | 457 | 0.15% | | | |





International Passenger Traffic

Distribution by Airline for May

| | | May 2021 | | May 2020 | | |
|--------------|--------------------|----------------|---------------|---------------|---------------|----------------|
| Airline | | Passengers | Rate of Total | Passengers | Rate of Total | Rate of Change |
| N4 | NORD WIND | 447 | 0.15% | | | |
| JAV | JORDANIAN AVIATION | 251 | 0.08% | | | |
| AHS | AERO HANDLING | 219 | 0.07% | 70 | 0.38% | |
| QS | SMARTWINGS | 196 | 0.06% | | | |
| HV | TRANSAVIA | 180 | 0.06% | | | |
| RJ | ROYAL JORDANIAN | 155 | 0.05% | | | |
| 5F | FLYONE | 118 | 0.04% | | | |
| | OTHERS | 2,208 | 0.75% | 1,289 | 7.07% | 71.29% |
| TOTAL | | 292,609 | | 18,225 | | |





Int'l Accumulated Passenger Traffic

Distribution by Airline

| | | Accumulated 2021 | | Accumulated 2020 | | |
|---------|---------------------------|------------------|---------------|------------------|---------------|----------------|
| Airline | | Passengers | Rate of Total | Passengers | Rate of Total | Rate of Change |
| LY | EL AL ISRAEL AIRLINES | 249,582 | 30.82% | 808,206 | 23.25% | -69.11% |
| UA | UNITED AIRLINES | 72,784 | 8.98% | 156,654 | 4.50% | -53.53% |
| 6H | ISR AIR AIRLINES | 65,493 | 8.08% | 95,397 | 2.74% | -31.34% |
| TK | TURKISH AIRLINES | 42,016 | 5.18% | 196,295 | 5.64% | -78.59% |
| IZ | ARKIA ISRAELI AIRLINES | 35,938 | 4.43% | 34,634 | 0.99% | 3.76% |
| LH | LUFTHANSA | 30,767 | 3.79% | 93,562 | 2.69% | -67.11% |
| PC | PEGASUS AIRLINES | 30,145 | 3.72% | 85,282 | 2.45% | -64.65% |
| DL | DELTA AIRLINES | 29,936 | 3.69% | 40,900 | 1.17% | -26.80% |
| PS | UKRAINE INTL AIR | 29,158 | 3.60% | 76,684 | 2.20% | -61.97% |
| FZ | FLYDUBAI | 26,790 | 3.30% | | | |
| AF | AIR FRANCE | 16,033 | 1.98% | 51,752 | 1.48% | -69.01% |
| ET | ETHIOPIAN AIRLINES | 15,063 | 1.86% | 29,222 | 0.84% | -48.45% |
| SU | AEROFLOT RUSSIAN AIRLINES | 14,855 | 1.83% | 112,941 | 3.24% | -86.84% |
| W6 | WIZZAIR | 12,931 | 1.59% | 218,849 | 6.29% | -94.09% |
| FR | RYANAIR | 10,979 | 1.35% | 208,235 | 5.99% | -94.72% |
| EZY | EASYJET | 9,003 | 1.11% | 241,922 | 6.96% | -96.27% |
| OS | AUSTRIAN AIRLINES | 8,147 | 1.00% | 44,351 | 1.27% | -81.63% |
| B2 | BELAVIA AIRLINE | 6,662 | 0.82% | 12,152 | 0.34% | -45.17% |
| 9U | AIR MOLDOVA | 6,331 | 0.78% | 8,338 | 0.23% | -24.07% |
| TO | TRANSAVIA FRANCE | 6,257 | 0.77% | 61,524 | 1.77% | -89.82% |
| BA | BRITISH AIRWAYS PLC | 6,003 | 0.74% | 62,138 | 1.78% | -90.33% |





Int'l Accumulated Passenger Traffic

Distribution by Airline

| | | Accumulated 2021 | | Accumulated 2020 | | |
|---------|---------------------------|------------------|---------------|------------------|---------------|----------------|
| Airline | | Passengers | Rate of Total | Passengers | Rate of Total | Rate of Change |
| VS | VIRGIN ATLANTIC AIRWAYS | 5,865 | 0.72% | 25,246 | 0.72% | -76.76% |
| RO | TAROM - RUMANIAN AIR TRAN | 5,609 | 0.69% | 18,083 | 0.52% | -68.98% |
| KL | K.L.M. | 5,541 | 0.68% | 26,316 | 0.75% | -78.94% |
| BZ | BLUE BIRD AIRWAYS | 5,394 | 0.66% | 7,726 | 0.22% | -30.18% |
| A9 | GEORGIAN AIRWAYS | 5,335 | 0.65% | 22,770 | 0.65% | -76.57% |
| AC | AIR CANADA | 5,203 | 0.64% | 27,263 | 0.78% | -80.91% |
| A3 | AEGEAN AIRLINES | 4,918 | 0.60% | 53,669 | 1.54% | -90.83% |
| LX | SWISS INT'L AIRLINES | 4,877 | 0.60% | 47,095 | 1.35% | -89.64% |
| HM | AIR SEYCHELLES | 4,058 | 0.50% | 2,887 | 0.08% | 40.56% |
| FB | BULGARIA AIR | 3,962 | 0.48% | 11,138 | 0.32% | -64.42% |
| IB | IBERIA | 3,264 | 0.40% | 30,252 | 0.87% | -89.21% |
| AA | AMERICAN AIRLINES | 2,963 | 0.36% | | | |
| AI | AIR INDIA | 2,714 | 0.33% | 20,734 | 0.59% | -86.91% |
| UX | AIR EUROPA Lineas Aereas | 2,374 | 0.29% | | | |
| LO | LOT POLISH AIRLINES | 1,944 | 0.24% | 46,286 | 1.33% | -95.80% |
| EY | ETIHAD AIRWAYS | 1,244 | 0.15% | | | |
| 5W | WIZZ AIR ABU DHABI | 824 | 0.10% | | | |
| TWI | TAILWIND AIRLINES | 754 | 0.09% | 12,018 | 0.34% | -93.72% |
| BUC | EUROPEAN AIR CHARTER | 702 | 0.08% | 2 | | |
| PQ | SKYUP AIRLINES | 684 | 0.08% | 9,469 | 0.27% | -92.77% |
| N4 | NORD WIND | 575 | 0.07% | | | |





Int'l Accumulated Passenger Traffic

Distribution by Airline

| | | Accumulated 2021 | | Accumulated 2020 | | |
|---------|----------------------------|------------------|---------------|------------------|---------------|----------------|
| Airline | | Passengers | Rate of Total | Passengers | Rate of Total | Rate of Change |
| CX | CATHAY PACIFIC AIRWAYS | 562 | 0.06% | 18,041 | 0.51% | -96.88% |
| AHS | AERO HANDLING | 505 | 0.06% | 602 | 0.01% | -16.11% |
| SN | BRUSSELS AIRLINES | 502 | 0.06% | 22,958 | 0.66% | -97.81% |
| EAF | ELECTRA AIRWAYS | 498 | 0.06% | | | |
| JAV | JORDANIAN AVIATION | 496 | 0.06% | 2,029 | 0.05% | -75.55% |
| QS | SMARTWINGS | 465 | 0.05% | 17,954 | 0.51% | -97.41% |
| HY | UZBEKISTAN AIR | 457 | 0.05% | 6,593 | 0.18% | -93.06% |
| HU | HAINAN AIRLINES | 440 | 0.05% | 7,382 | 0.21% | -94.03% |
| RJ | ROYAL JORDANIAN | 311 | 0.03% | 27,392 | 0.78% | -98.86% |
| BT | AIR BALTIC | 296 | 0.03% | 1,681 | 0.04% | -82.39% |
| ASY | ROYAL AUSTRALIAN AIR FORCE | 293 | 0.03% | | | |
| HV | TRANSAVIA | 236 | 0.02% | 32,925 | 0.94% | -99.28% |
| CY | CYPRUS AIRWAYS | 230 | 0.02% | 9,192 | 0.26% | -97.49% |
| TB | JET AIRFLY | 200 | 0.02% | | | |
| PVG | PRIVILEG STYLE | 188 | 0.02% | 100 | | 88.00% |
| UL | SRILANKA AIRLINES | 119 | 0.01% | | | |
| 5F | FLYONE | 118 | 0.01% | 112 | | 5.35% |
| X5 | AIR EUROPA EXPRESS | 109 | 0.01% | | | |
| | OTHERS | 9,985 | 1.23% | 328,386 | 9.44% | -96.95% |
| | TOTAL | 809,687 | | 3,475,339 | | -76.70% |





International Passenger Traffic

Distribution by Israeli Airlines for May

| | | May 2021 | | May 2020 | | |
|----|------------------------|----------------|---------------|--------------|---------------|----------------|
| | Airlines | Passengers | Rate of Total | Passengers | Rate of Total | Rate of Change |
| LY | EL AL ISRAEL AIRLINES | 116,536 | 39.82% | 2,833 | 15.54% | |
| 6H | ISR AIR AIRLINES | 24,906 | 8.51% | 2,408 | 13.21% | |
| IZ | ARKIA ISRAELI AIRLINES | 13,840 | 4.72% | 2 | 0.01% | |
| | OTHERS | 523 | 0.17% | 81 | 0.44% | |
| | TOTAL | 155,805 | 53.24% | 5,324 | 29.21% | |

Int'l Accumulated Passenger Traffic

Distribution by Israeli Airlines

| | | Accumulated 2021 | | Accumulated 2020 | | |
|----|------------------------|------------------|---------------|------------------|---------------|----------------|
| | Airlines | Passengers | Rate of Total | Passengers | Rate of Total | Rate of Change |
| LY | EL AL ISRAEL AIRLINES | 249,582 | 30.82% | 808,206 | 23.25% | -69.11% |
| 6H | ISR AIR AIRLINES | 65,493 | 8.08% | 95,397 | 2.74% | -31.34% |
| IZ | ARKIA ISRAELI AIRLINES | 35,938 | 4.43% | 34,634 | 0.99% | 3.76% |
| | OTHERS | 2,754 | 0.34% | 561 | 0.01% | |
| | TOTAL | 353,767 | 43.69% | 938,798 | 27.01% | -62.31% |





International Passenger Traffic

Distribution by Countries for May

| Countries | May 2021 | | May 2020 | | Rate of Change |
|----------------------|------------|---------------|------------|---------------|----------------|
| | Passengers | Rate of Total | Passengers | Total of Rate | |
| UNITED STATES | 65,508 | 22.38% | 6,582 | 36.11% | |
| UNITED ARAB EMIRATES | 30,432 | 10.40% | | | |
| GREECE | 30,184 | 10.31% | 20 | 0.10% | |
| GEORGIA | 24,814 | 8.48% | 229 | 1.25% | |
| FRANCE | 19,599 | 6.69% | 2,232 | 12.24% | |
| CYPRUS | 16,524 | 5.64% | 184 | 1.00% | |
| UNITED KINGDOM | 12,937 | 4.42% | 1,616 | 8.86% | |
| TURKEY | 12,322 | 4.21% | 36 | 0.19% | |
| GERMANY | 11,969 | 4.09% | 685 | 3.75% | |
| RUSSIAN FEDERATION | 11,607 | 3.96% | 775 | 4.25% | |
| BULGARIA | 7,930 | 2.71% | 207 | 1.13% | |
| UKRAINE | 4,981 | 1.70% | 1,350 | 7.40% | |
| NETHERLANDS | 4,182 | 1.42% | 5 | 0.02% | |
| AUSTRIA | 3,975 | 1.35% | 360 | 1.97% | |
| SEYCHELLES | 3,765 | 1.28% | | | |
| ROMANIA | 3,497 | 1.19% | 241 | 1.32% | |
| BELARUS | 3,353 | 1.14% | 1,522 | 8.35% | 120.30% |
| ETHIOPIA | 3,148 | 1.07% | 417 | 2.28% | |
| SWITZERLAND | 3,058 | 1.04% | 2 | 0.01% | |
| MOLDOVA | 2,615 | 0.89% | 279 | 1.53% | |
| SPAIN | 2,000 | 0.68% | 15 | 0.08% | |
| POLAND | 1,905 | 0.65% | 49 | 0.26% | |





International Passenger Traffic

Distribution by Countries for May

| Countries | May 2021 | | May 2020 | | |
|--------------|----------------|---------------|---------------|---------------|----------------|
| | Passengers | Rate of Total | Passengers | Total of Rate | Rate of Change |
| BELGIUM | 1,822 | 0.62% | 33 | 0.18% | |
| THAILAND | 1,590 | 0.54% | | | |
| CHINA | 1,497 | 0.51% | 93 | 0.51% | |
| HUNGARY | 1,339 | 0.45% | 336 | 1.84% | |
| MONTENEGRO | 1,224 | 0.41% | | | |
| CANADA | 1,222 | 0.41% | 96 | 0.52% | |
| INDIA | 655 | 0.22% | 261 | 1.43% | 150.95% |
| UZBEKISTAN | 590 | 0.20% | 41 | 0.22% | |
| JORDAN | 495 | 0.16% | 13 | 0.07% | |
| SERBIA | 439 | 0.15% | 11 | 0.06% | |
| ALBANIA | 352 | 0.12% | | | |
| ITALY | 304 | 0.10% | 264 | 1.44% | 15.15% |
| CROATIA | 239 | 0.08% | 13 | 0.07% | |
| EGYPT | 148 | 0.05% | 52 | 0.28% | 184.61% |
| SOUTH AFRICA | 105 | 0.03% | | | |
| OTHERS | 283 | 0.09% | 206 | 1.13% | 37.37% |
| TOTAL | 292,609 | | 18,225 | | |





Int'l Accumulated Passenger Traffic

Distribution by Countries

| Countries | Accumulated 2021 | | Accumulated 2020 | | |
|----------------------|------------------|---------------|------------------|---------------|----------------|
| | Passengers | Rate of Total | Passengers | Rate of Total | Rate of Change |
| UNITED STATES | 186,876 | 23.08% | 363,857 | 10.46% | -48.64% |
| TURKEY | 73,786 | 9.11% | 318,483 | 9.16% | -76.83% |
| UNITED ARAB EMIRATES | 69,580 | 8.59% | | | |
| FRANCE | 59,144 | 7.30% | 241,675 | 6.95% | -75.52% |
| GERMANY | 56,906 | 7.02% | 237,425 | 6.83% | -76.03% |
| GEORGIA | 47,709 | 5.89% | 58,508 | 1.68% | -18.45% |
| UKRAINE | 44,879 | 5.54% | 110,760 | 3.18% | -59.48% |
| GREECE | 36,053 | 4.45% | 87,061 | 2.50% | -58.58% |
| UNITED KINGDOM | 35,584 | 4.39% | 235,074 | 6.76% | -84.86% |
| CYPRUS | 30,702 | 3.79% | 74,410 | 2.14% | -58.73% |
| RUSSIAN FEDERATION | 27,000 | 3.33% | 190,508 | 5.48% | -85.82% |
| BULGARIA | 15,737 | 1.94% | 75,056 | 2.15% | -79.03% |
| ETHIOPIA | 15,292 | 1.88% | 29,253 | 0.84% | -47.72% |
| AUSTRIA | 11,308 | 1.39% | 108,112 | 3.11% | -89.54% |
| SEYCHELLES | 11,143 | 1.37% | 3,955 | 0.11% | 181.74% |
| NETHERLANDS | 9,257 | 1.14% | 105,704 | 3.04% | -91.24% |
| ROMANIA | 8,803 | 1.08% | 116,750 | 3.35% | -92.45% |
| SWITZERLAND | 7,971 | 0.98% | 108,667 | 3.12% | -92.66% |
| BELARUS | 6,890 | 0.85% | 12,156 | 0.34% | -43.32% |
| MOLDOVA | 6,750 | 0.83% | 10,007 | 0.28% | -32.54% |
| SPAIN | 5,966 | 0.73% | 150,951 | 4.34% | -96.04% |
| CANADA | 5,232 | 0.64% | 40,737 | 1.17% | -87.15% |





Int'l Accumulated Passenger Traffic

Distribution by Countries

| Countries | Accumulated 2021 | | Accumulated 2020 | | |
|-------------------|------------------|---------------|------------------|---------------|----------------|
| | Passengers | Rate of Total | Passengers | Rate of Total | Rate of Change |
| THAILAND | 5,031 | 0.62% | 40,546 | 1.16% | -87.59% |
| HUNGARY | 4,225 | 0.52% | 95,704 | 2.75% | -95.58% |
| CHINA | 4,188 | 0.51% | 40,503 | 1.16% | -89.66% |
| POLAND | 3,860 | 0.47% | 130,378 | 3.75% | -97.03% |
| INDIA | 3,750 | 0.46% | 40,272 | 1.15% | -90.68% |
| BELGIUM | 3,597 | 0.44% | 45,649 | 1.31% | -92.12% |
| ITALY | 2,089 | 0.25% | 175,395 | 5.04% | -98.80% |
| JORDAN | 1,899 | 0.23% | 29,742 | 0.85% | -93.61% |
| MONTENEGRO | 1,441 | 0.17% | 33 | | |
| UZBEKISTAN | 886 | 0.10% | 6,653 | 0.19% | -86.68% |
| SERBIA | 812 | 0.10% | 8,847 | 0.25% | -90.82% |
| EGYPT | 654 | 0.08% | 9,653 | 0.27% | -93.22% |
| MEXICO | 572 | 0.07% | | | |
| CZECH REPUBLIC | 432 | 0.05% | 46,808 | 1.34% | -99.07% |
| ALBANIA | 382 | 0.04% | | | |
| CROATIA | 334 | 0.04% | 725 | 0.02% | -53.93% |
| LATVIA | 300 | 0.03% | 1,690 | 0.04% | -82.24% |
| AZERBAIJAN | 240 | 0.02% | 8,698 | 0.25% | -97.24% |
| PANAMA | 200 | 0.02% | | | |
| GHANA | 197 | 0.02% | 34 | | |
| EQUATORIAL GUINEA | 195 | 0.02% | | | |
| LITHUANIA | 156 | 0.01% | 14,195 | 0.40% | -98.90% |





Int'l Accumulated Passenger Traffic

Distribution by Countries

| Countries | Accumulated 2021 | | Accumulated 2020 | | |
|--------------|------------------|---------------|------------------|---------------|----------------|
| | Passengers | Rate of Total | Passengers | Rate of Total | Rate of Change |
| BRAZIL | 134 | 0.01% | 15,433 | 0.44% | -99.13% |
| KAZAKHSTAN | 125 | 0.01% | 39 | | |
| IRELAND | 120 | 0.01% | 193 | | -37.82% |
| SOUTH AFRICA | 109 | 0.01% | 12,876 | 0.37% | -99.15% |
| GIBRALTAR | 103 | 0.01% | 16 | | |
| OTHERS | 1,088 | 0.13% | 72,148 | 2.07% | -98.49% |
| TOTAL | 809,687 | | 3,475,339 | | -76.70% |





International Passenger Traffic

Distribution by First Destination for May

| Destination | May 2021 | | May 2020 | | |
|-------------------------|------------|---------------|------------|---------------|----------------|
| | Passengers | Rate of Total | Passengers | Rate of Total | Rate of Change |
| DUBAI | 29,073 | 9.93% | | | |
| NEW YORK - J.F.KENNEDY | 27,458 | 9.38% | 268 | 1.47% | |
| NEW YORK - NEWARK | 22,616 | 7.72% | 6,080 | 33.36% | |
| PARIS-CHARLES DE GAULLE | 17,833 | 6.09% | 2,213 | 12.14% | |
| BATUMI | 14,600 | 4.98% | | | |
| ATHENS | 14,542 | 4.96% | 19 | 0.10% | |
| LONDON - HEATHROW | 12,086 | 4.13% | 79 | 0.43% | |
| LARNACA | 11,176 | 3.81% | 184 | 1.00% | |
| TBILISI | 10,214 | 3.49% | 229 | 1.25% | |
| FRANKFURT | 8,294 | 2.83% | 643 | 3.52% | |
| ISTANBUL | 6,729 | 2.29% | 36 | 0.19% | |
| HERAKLION | 6,577 | 2.24% | | | |
| RHODES-PARADISI | 6,162 | 2.10% | | | |
| ISTANBUL-SABIHA GOKCHEN | 5,568 | 1.90% | | | |
| MOSCOW-DOMODEDOVO | 5,567 | 1.90% | 539 | 2.95% | |
| MOSCOW | 5,453 | 1.86% | 89 | 0.48% | |
| PAPHOS | 5,348 | 1.82% | | | |
| MIAMI INTERNATIONAL | 5,186 | 1.77% | 2 | 0.01% | |
| LOS ANGELES | 4,866 | 1.66% | 139 | 0.76% | |
| KIEV KYIV-BORISPOL | 4,804 | 1.64% | 1,350 | 7.40% | |
| AMSTERDAM | 4,178 | 1.42% | 5 | 0.02% | |
| SOFIA | 4,055 | 1.38% | 204 | 1.11% | |





International Passenger Traffic

Distribution by First Destination for May

| Destination | May 2021 | | May 2020 | | |
|--------------------------|------------|---------------|------------|---------------|----------------|
| | Passengers | Rate of Total | Passengers | Rate of Total | Rate of Change |
| VIENNA | 3,963 | 1.35% | 359 | 1.96% | |
| MAHE SEYCHELLES INTL | 3,765 | 1.28% | | | |
| MINSK | 3,353 | 1.14% | 1,522 | 8.35% | 120.30% |
| SAN FRANCISCO | 3,217 | 1.09% | | | |
| ADDIS ABABA | 3,148 | 1.07% | 417 | 2.28% | |
| VARNA | 2,947 | 1.00% | 3 | 0.01% | |
| BUCHAREST - OTOPENI | 2,905 | 0.99% | 241 | 1.32% | |
| ZURICH | 2,867 | 0.97% | | | |
| CHISINAU | 2,615 | 0.89% | 279 | 1.53% | |
| THESSALONIKI | 2,367 | 0.80% | 1 | | |
| BERLIN BRANDENBURG INTL | 2,301 | 0.78% | | | |
| CHICAGO - O'HARE | 2,019 | 0.68% | 2 | 0.01% | |
| MADRID | 1,936 | 0.66% | 13 | 0.07% | |
| PARIS-ORLY | 1,681 | 0.57% | | | |
| BRUSSELS | 1,672 | 0.57% | 2 | 0.01% | |
| WARSAW | 1,644 | 0.56% | 49 | 0.26% | |
| BANGKOK INTL.-SUARNABHUM | 1,590 | 0.54% | | | |
| SHANGHAI PUDONG | 1,488 | 0.50% | | | |
| BUDAPEST | 1,339 | 0.45% | 336 | 1.84% | |
| MUNICH | 1,328 | 0.45% | | | |
| TIVAT | 1,224 | 0.41% | | | |
| TORONTO | 1,216 | 0.41% | 96 | 0.52% | |





International Passenger Traffic

Distribution by First Destination for May

| Destination | May 2021 | | May 2020 | | |
|--------------------------|------------|---------------|------------|---------------|----------------|
| | Passengers | Rate of Total | Passengers | Rate of Total | Rate of Change |
| ABU DHABI | 1,192 | 0.40% | | | |
| BURGAS | 928 | 0.31% | | | |
| LUTON | 785 | 0.26% | 1,520 | 8.34% | -48.35% |
| TASHKENT | 590 | 0.20% | 41 | 0.22% | |
| DELHI | 494 | 0.16% | 209 | 1.14% | 136.36% |
| AMMAN (QUEEN ALIA INT'L) | 451 | 0.15% | 8 | 0.04% | |
| ST. PETERSBURG | 447 | 0.15% | 1 | | |
| BELGRADE | 439 | 0.15% | 11 | 0.06% | |
| CLUJ NAPOCA | 386 | 0.13% | | | |
| TIRANA | 352 | 0.12% | | | |
| KRAKOW | 257 | 0.08% | | | |
| CORFU | 243 | 0.08% | | | |
| MILAN-MALPENSA | 241 | 0.08% | 40 | 0.21% | |
| ZAGREB | 234 | 0.07% | | | |
| IASI | 179 | 0.06% | | | |
| MUMBAI | 161 | 0.05% | 52 | 0.28% | |
| LIEGE | 150 | 0.05% | 31 | 0.17% | |
| BASEL | 147 | 0.05% | 1 | | |
| ODESA | 143 | 0.04% | | | |
| SANTORINI | 129 | 0.04% | | | |
| CAIRO INTERNATIONAL | 114 | 0.03% | 16 | 0.08% | |
| JOHANNESBURG | 105 | 0.03% | | | |





International Passenger Traffic

Distribution by First Destination for May

| Destination | May 2021 | | May 2020 | | |
|-------------------------|----------------|---------------|---------------|---------------|----------------|
| | Passengers | Rate of Total | Passengers | Rate of Total | Rate of Change |
| DUBAI AL MAKTOUM INT AP | 104 | 0.03% | | | |
| OTHERS | 1,368 | 0.46% | 896 | 4.91% | 52.67% |
| TOTAL | 292,609 | | 18,225 | | |





Int'l Accumulated Passenger Traffic

Distribution by First Destination

| Destination | Accumulated 2021 | | Accumulated 2020 | | Rate of Change |
|-------------------------|------------------|---------------|------------------|---------------|----------------|
| | Passengers | Rate of Total | Passengers | Rate of Total | |
| NEW YORK - J.F.KENNEDY | 79,887 | 9.86% | 101,691 | 2.92% | -21.44% |
| NEW YORK - NEWARK | 73,706 | 9.10% | 153,411 | 4.41% | -51.95% |
| DUBAI | 66,513 | 8.21% | | | |
| PARIS-CHARLES DE GAULLE | 52,647 | 6.50% | 130,272 | 3.74% | -59.58% |
| FRANKFURT | 47,823 | 5.90% | 77,278 | 2.22% | -38.11% |
| KIEV KYIV-BORISPOL | 42,589 | 5.25% | 79,393 | 2.28% | -46.35% |
| ISTANBUL-SABIHA GOKCHEN | 38,107 | 4.70% | 91,168 | 2.62% | -58.20% |
| ISTANBUL | 35,021 | 4.32% | 190,395 | 5.47% | -81.60% |
| LONDON - HEATHROW | 31,915 | 3.94% | 133,761 | 3.84% | -76.14% |
| BATUMI | 29,870 | 3.68% | 17,244 | 0.49% | 73.21% |
| LARNACA | 22,736 | 2.80% | 39,938 | 1.14% | -43.07% |
| ATHENS | 20,244 | 2.50% | 75,006 | 2.15% | -73.01% |
| TBILISI | 17,839 | 2.20% | 41,264 | 1.18% | -56.76% |
| ADDIS ABABA | 15,292 | 1.88% | 29,253 | 0.84% | -47.72% |
| MOSCOW | 14,864 | 1.83% | 112,781 | 3.24% | -86.82% |
| VIENNA | 11,296 | 1.39% | 105,372 | 3.03% | -89.27% |
| SOFIA | 11,255 | 1.39% | 64,896 | 1.86% | -82.65% |
| MAHE SEYCHELLES INTL | 11,143 | 1.37% | 3,955 | 0.11% | 181.74% |
| MOSCOW-DOMODEDOVO | 11,114 | 1.37% | 14,368 | 0.41% | -22.64% |
| MIAMI INTERNATIONAL | 11,001 | 1.35% | 19,020 | 0.54% | -42.16% |
| SAN FRANCISCO | 10,335 | 1.27% | 42,935 | 1.23% | -75.92% |
| AMSTERDAM | 9,227 | 1.13% | 98,412 | 2.83% | -90.62% |





Int'l Accumulated Passenger Traffic

Distribution by First Destination

| Destination | Accumulated 2021 | | Accumulated 2020 | | |
|--------------------------|------------------|---------------|------------------|---------------|----------------|
| | Passengers | Rate of Total | Passengers | Rate of Total | Rate of Change |
| LOS ANGELES | 8,661 | 1.06% | 15,084 | 0.43% | -42.58% |
| BUCHAREST - OTOPENI | 8,037 | 0.99% | 97,285 | 2.79% | -91.73% |
| PAPHOS | 7,966 | 0.98% | 34,442 | 0.99% | -76.87% |
| MINSK | 6,890 | 0.85% | 12,156 | 0.34% | -43.32% |
| CHISINAU | 6,750 | 0.83% | 10,007 | 0.28% | -32.54% |
| HERAKLION | 6,598 | 0.81% | 15 | | |
| RHODES-PARADISI | 6,189 | 0.76% | 5 | | |
| PARIS-ORLY | 6,120 | 0.75% | 54,874 | 1.57% | -88.84% |
| BERLIN BRANDENBURG INTL | 5,880 | 0.72% | | | |
| ZURICH | 5,810 | 0.71% | 66,337 | 1.90% | -91.24% |
| MADRID | 5,699 | 0.70% | 98,043 | 2.82% | -94.18% |
| TORONTO | 5,203 | 0.64% | 40,618 | 1.16% | -87.19% |
| BANGKOK INTL.-SUARNABHUM | 5,031 | 0.62% | 40,546 | 1.16% | -87.59% |
| BUDAPEST | 4,225 | 0.52% | 89,560 | 2.57% | -95.28% |
| VARNA | 3,554 | 0.43% | 8,151 | 0.23% | -56.39% |
| BRUSSELS | 3,372 | 0.41% | 32,766 | 0.94% | -89.70% |
| LUTON | 3,303 | 0.40% | 71,734 | 2.06% | -95.39% |
| SHANGHAI PUDONG | 3,123 | 0.38% | 6 | | |
| DELHI | 3,070 | 0.37% | 20,995 | 0.60% | -85.37% |
| MUNICH | 3,033 | 0.37% | 51,768 | 1.48% | -94.14% |
| THESSALONIKI | 2,367 | 0.29% | 11,981 | 0.34% | -80.24% |
| CHICAGO - O'HARE | 2,295 | 0.28% | 4 | | |





Int'l Accumulated Passenger Traffic

Distribution by First Destination

| Destination | Accumulated 2021 | | Accumulated 2020 | | |
|--------------------------|------------------|---------------|------------------|---------------|----------------|
| | Passengers | Rate of Total | Passengers | Rate of Total | Rate of Change |
| WARSAW | 2,240 | 0.27% | 65,453 | 1.88% | -96.57% |
| ODESA | 2,177 | 0.26% | 12,219 | 0.35% | -82.18% |
| ABU DHABI | 2,140 | 0.26% | | | |
| AMMAN (QUEEN ALIA INT'L) | 1,592 | 0.19% | 29,531 | 0.84% | -94.60% |
| TIVAT | 1,390 | 0.17% | | | |
| BASEL | 1,092 | 0.13% | 11,188 | 0.32% | -90.23% |
| KRAKOW | 1,078 | 0.13% | 29,790 | 0.85% | -96.38% |
| GENEVA | 1,008 | 0.12% | 31,075 | 0.89% | -96.75% |
| BURGAS | 928 | 0.11% | | | |
| TASHKENT | 886 | 0.10% | 6,640 | 0.19% | -86.65% |
| BELGRADE | 812 | 0.10% | 8,847 | 0.25% | -90.82% |
| HOUSTON INTERCONTINENTAL | 738 | 0.09% | 241 | | |
| BERGAMO | 674 | 0.08% | 10,688 | 0.30% | -93.69% |
| ST. PETERSBURG | 640 | 0.07% | 19,028 | 0.54% | -96.63% |
| HONG KONG INT'L | 625 | 0.07% | 27,605 | 0.79% | -97.73% |
| ROME - FIUMICINO | 536 | 0.06% | 101,859 | 2.93% | -99.47% |
| CANCUN- MEXICO | 532 | 0.06% | | | |
| CLUJ NAPOCA | 504 | 0.06% | 5,419 | 0.15% | -90.69% |
| MILAN-MALPENSA | 502 | 0.06% | 38,493 | 1.10% | -98.69% |
| DUBAI AL MAKTOUM INT AP | 490 | 0.06% | | | |
| AL BATEEN EXECUTIVE AP | 414 | 0.05% | | | |
| TIRANA | 382 | 0.04% | | | |





Int'l Accumulated Passenger Traffic

Distribution by First Destination

| Destination | Accumulated 2021 | | Accumulated 2020 | | |
|--------------------------|------------------|---------------|------------------|---------------|----------------|
| | Passengers | Rate of Total | Passengers | Rate of Total | Rate of Change |
| MUMBAI | 361 | 0.04% | 12,731 | 0.36% | -97.16% |
| CAIRO INTERNATIONAL | 360 | 0.04% | 7,881 | 0.22% | -95.43% |
| PRAGUE-RUZYNE | 352 | 0.04% | 46,783 | 1.34% | -99.24% |
| RZESZOW-JASIONKA | 329 | 0.04% | 1,118 | 0.03% | -70.57% |
| BANGALORE | 319 | 0.03% | | | |
| MOSCOW-VNUKOVO | 313 | 0.03% | 490 | 0.01% | -36.12% |
| RIGA | 300 | 0.03% | 1,690 | 0.04% | -82.24% |
| BEIJING | 254 | 0.03% | 8,451 | 0.24% | -96.99% |
| ZAGREB | 249 | 0.03% | 709 | 0.02% | -64.88% |
| CORFU | 247 | 0.03% | 2 | | |
| SHARM EL SHEIKH | 232 | 0.02% | 25 | | |
| DALAMAN | 231 | 0.02% | 572 | 0.01% | -59.61% |
| LIEGE | 221 | 0.02% | 249 | | -11.24% |
| KATOWICE | 206 | 0.02% | 10,523 | 0.30% | -98.04% |
| PANAMA CITY | 200 | 0.02% | | | |
| ACCRA-KOTOKA | 197 | 0.02% | 34 | | |
| BATA AIRPORT | 195 | 0.02% | | | |
| CHENGDU | 186 | 0.02% | 2,513 | 0.07% | -92.59% |
| IASI | 186 | 0.02% | 6,074 | 0.17% | -96.93% |
| BAKU HEYDAR ALIYEV INT`L | 183 | 0.02% | 8,698 | 0.25% | -97.89% |
| ANTALYA | 152 | 0.01% | 36,303 | 1.04% | -99.58% |
| ANKARA-ESENBUGA | 142 | 0.01% | 38 | | |





Int'l Accumulated Passenger Traffic

Distribution by First Destination

| Destination | Accumulated 2021 | | Accumulated 2020 | | |
|----------------------------|------------------|---------------|------------------|---------------|----------------|
| | Passengers | Rate of Total | Passengers | Rate of Total | Rate of Change |
| LYON - SATOLAS | 138 | 0.01% | 14,240 | 0.40% | -99.03% |
| SAO PAULO (GUARULHOS INT') | 134 | 0.01% | 15,433 | 0.44% | -99.13% |
| SANTORINI | 129 | 0.01% | | | |
| BERLIN -SCHOENEFELD | 121 | 0.01% | 44,065 | 1.26% | -99.72% |
| ALMATY | 118 | 0.01% | 34 | | |
| SHANNON | 114 | 0.01% | 127 | | -10.23% |
| NICE | 108 | 0.01% | 6,630 | 0.19% | -98.37% |
| JOHANNESBURG | 105 | 0.01% | 12,876 | 0.37% | -99.18% |
| GIBRALTAR | 103 | 0.01% | 16 | | |
| VILNIUS INTL | 100 | 0.01% | 13,886 | 0.39% | -99.27% |
| OTHERS | 4,122 | 0.50% | 446,882 | 12.85% | -99.07% |
| TOTAL | 809,687 | | 3,475,339 | | -76.70% |



Cargo Activity





Cargo Handling

Distribution by Transporter

| Transporter | May 2021 (Ton) | May 2020 (Ton) | Rate of Change |
|---|----------------|----------------|----------------|
| Cargo on Passenger Aircrafts - Incoming | 3,193 | 718 | |
| Cargo on Passenger Aircrafts - Outgoing | 3,716 | 549 | |
| Total Cargo on Passenger Aircrafts | 6,909 | 1,267 | |
| Cargo on Cargo Aircrafts - Incoming | 15,695 | 15,557 | 0.88% |
| Cargo on Cargo Aircrafts - Outgoing | 7,661 | 10,262 | -25.34% |
| Total Cargo on Cargo Aircrafts | 23,356 | 25,819 | -9.53% |
| Total | 30,265 | 27,086 | 11.73% |

Distribution by Months

| Month | 2021 (ton) | | | 2020 (ton) | | | Rate of Change |
|--------------|----------------|--------------|----------------|----------------|--------------|----------------|----------------|
| | Cargo | Mail | Total | Cargo | Mail | Total | |
| January | 28,571 | 632 | 29,203 | 28,568 | 1,395 | 29,964 | -2.53% |
| February | 26,507 | 323 | 26,830 | 28,188 | 1,033 | 29,221 | -8.18% |
| March | 31,394 | 548 | 31,942 | 26,511 | 535 | 27,047 | 18.09% |
| April | 28,779 | 745 | 29,524 | 20,673 | 116 | 20,790 | 42.01% |
| May | 29,716 | 549 | 30,265 | 26,974 | 112 | 27,086 | 11.73% |
| Total | 144,967 | 2,797 | 147,764 | 130,914 | 3,191 | 134,108 | 10.18% |





Cargo Handling on Passenger Aircrafts

Distribution by Airline for May

| | | May 2021 | | | | May 2020 | | | | |
|---------|---------------------------|----------------------|----------------------|-------------|---------------|----------------------|----------------------|-------------|---------------|----------------|
| Airline | | Incoming Cargo (Ton) | Outgoing Cargo (Ton) | Cargo (Ton) | Rate of Total | Incoming Cargo (Ton) | Outgoing Cargo (Ton) | Cargo (Ton) | Rate of Total | Rate of Change |
| LY | EL AL ISRAEL AIRLINES | 949 | 1,457 | 2,406 | 34.82% | 264 | 18 | 282 | 22.25% | |
| UA | UNITED AIRLINES | 356 | 713 | 1,069 | 15.47% | 389 | 493 | 882 | 69.61% | 21.20% |
| DL | DELTA AIRLINES | 238 | 243 | 481 | 6.96% | | | | | |
| ET | ETHIOPIAN AIRLINES | 242 | 141 | 383 | 5.54% | 22 | 12 | 34 | 2.68% | |
| LX | SWISS INT'L AIRLINES | 185 | 142 | 328 | 4.74% | | | | | |
| BA | BRITISH AIRWAYS PLC | 153 | 171 | 325 | 4.70% | | | | | |
| AA | AMERICAN AIRLINES | 110 | 166 | 276 | 3.99% | | | | | |
| VS | VIRGIN ATLANTIC AIRWAYS | 153 | 80 | 234 | 3.38% | | | | | |
| AF | AIR FRANCE | 125 | 92 | 217 | 3.14% | | | | | |
| AC | AIR CANADA | 79 | 134 | 212 | 3.06% | | | | | |
| SU | AEROFLOT RUSSIAN AIRLINES | 73 | 112 | 185 | 2.67% | 4 | | 4 | 0.31% | |
| EY | ETIHAD AIRWAYS | 85 | 91 | 176 | 2.54% | | | | | |
| TK | TURKISH AIRLINES | 159 | 15 | 174 | 2.51% | 20 | | 20 | 1.57% | |
| IB | IBERIA | 93 | 58 | 152 | 2.20% | | | | | |
| PC | PEGASUS AIRLINES | 41 | 29 | 70 | 1.01% | | | | | |
| AI | AIR INDIA | 22 | 26 | 47 | 0.68% | 2 | 7 | 9 | 0.71% | |
| FZ | FLYDUBAI | 31 | 10 | 41 | 0.59% | | | | | |
| HM | AIR SEYCHELLES | 26 | | 26 | 0.37% | | | | | |
| PS | UKRAINE INTL AIR | 17 | 7 | 24 | 0.34% | 1 | | 1 | 0.07% | |
| LH | LUFTHANSA | 13 | 3 | 16 | 0.23% | | | | | |
| LO | LOT POLISH AIRLINES | 10 | 1 | 12 | 0.17% | | | | | |
| A3 | AEGEAN AIRLINES | 11 | 1 | 12 | 0.17% | | | | | |





Cargo Handling on Passenger Aircrafts

Distribution by Airline for May

| | | May 2021 | | | | May 2020 | | | | |
|------------------------------|----------------------|----------------------|--------------|---------------|----------------------|----------------------|--------------|---------------|----------------|--|
| Airline | Incoming Cargo (Ton) | Outgoing Cargo (Ton) | Cargo (Ton) | Rate of Total | Incoming Cargo (Ton) | Outgoing Cargo (Ton) | Cargo (Ton) | Rate of Total | Rate of Change | |
| B2 BELAVIA AIRLINE | 4 | 5 | 10 | 0.14% | 4 | 7 | 10 | 0.78% | | |
| RO TAROM - RUMANIAN AIR TRAN | 6 | 2 | 8 | 0.11% | | | | | | |
| 6H ISRAIR AIRLINES | | 7 | 7 | 0.10% | 12 | 12 | 24 | 1.89% | -70.83% | |
| OS AUSTRIAN AIRLINES | 4 | 1 | 5 | 0.07% | | | | | | |
| HY UZBEKISTAN AIR | 2 | 2 | 4 | 0.05% | | | | | | |
| 9U AIR MOLDOVA | | 3 | 4 | 0.05% | | | | | | |
| OTHERS | 6 | 4 | 10 | 0.14% | | | | | | |
| TOTAL | 3,193 | 3,716 | 6,909 | | 718 | 549 | 1,267 | | | |





Accumulated Cargo Handling on Passengers Aircrafts

Distribution by Airline

| | | Accumulated 2021 | | | | Accumulated 2020 | | | | |
|---------|---------------------------|----------------------|----------------------|-------------|---------------|----------------------|----------------------|-------------|---------------|----------------|
| Airline | | Incoming Cargo (Ton) | Outgoing Cargo (Ton) | Cargo (Ton) | Rate of Total | Incoming Cargo (Ton) | Outgoing Cargo (Ton) | Cargo (Ton) | Rate of Total | Rate of Change |
| LY | EL AL ISRAEL AIRLINES | 2,976 | 3,895 | 6,871 | 29.91% | 6,771 | 6,168 | 12,939 | 31.18% | -46.89% |
| UA | UNITED AIRLINES | 1,846 | 2,889 | 4,736 | 20.61% | 3,709 | 4,296 | 8,006 | 19.29% | -40.84% |
| DL | DELTA AIRLINES | 1,113 | 1,200 | 2,313 | 10.07% | 482 | 199 | 681 | 1.64% | |
| ET | ETHIOPIAN AIRLINES | 843 | 550 | 1,393 | 6.06% | 165 | 85 | 250 | 0.60% | |
| TK | TURKISH AIRLINES | 930 | 252 | 1,181 | 5.14% | 2,323 | 788 | 3,111 | 7.49% | -62.03% |
| VS | VIRGIN ATLANTIC AIRWAYS | 569 | 401 | 970 | 4.22% | 586 | 444 | 1,029 | 2.48% | -5.73% |
| LX | SWISS INT'L AIRLINES | 435 | 355 | 790 | 3.43% | 1,496 | 821 | 2,317 | 5.58% | -65.90% |
| AC | AIR CANADA | 272 | 376 | 647 | 2.81% | 867 | 663 | 1,531 | 3.69% | -57.74% |
| SU | AEROFLOT RUSSIAN AIRLINES | 245 | 371 | 616 | 2.68% | 1,498 | 1,389 | 2,886 | 6.95% | -78.65% |
| AF | AIR FRANCE | 358 | 250 | 608 | 2.64% | 32 | 67 | 99 | 0.23% | |
| BA | BRITISH AIRWAYS PLC | 300 | 295 | 595 | 2.59% | 1,071 | 684 | 1,755 | 4.23% | -66.09% |
| IB | IBERIA | 249 | 128 | 378 | 1.64% | 709 | 218 | 927 | 2.23% | -59.22% |
| EY | ETIHAD AIRWAYS | 162 | 190 | 352 | 1.53% | | | | | |
| AA | AMERICAN AIRLINES | 110 | 166 | 276 | 1.20% | | | | | |
| PC | PEGASUS AIRLINES | 144 | 107 | 251 | 1.09% | 180 | 114 | 293 | 0.70% | -14.33% |
| FZ | FLYDUBAI | 124 | 29 | 152 | 0.66% | | | | | |
| AI | AIR INDIA | 65 | 79 | 143 | 0.62% | 468 | 257 | 725 | 1.74% | -80.27% |
| PS | UKRAINE INTL AIR | 82 | 40 | 122 | 0.53% | 66 | 84 | 151 | 0.36% | -19.20% |
| LH | LUFTHANSA | 47 | 17 | 64 | 0.27% | 137 | 151 | 287 | 0.69% | -77.70% |
| HM | AIR SEYCHELLES | 58 | 1 | 59 | 0.25% | 8 | 2 | 9 | 0.02% | |
| 6H | ISRAIR AIRLINES | 1 | 28 | 29 | 0.12% | 12 | 34 | 46 | 0.11% | -36.95% |
| B2 | BELAVIA AIRLINE | 12 | 14 | 26 | 0.11% | 13 | 34 | 46 | 0.11% | -43.47% |





Accumulated Cargo Handling on Passengers Aircrafts

Distribution by Airline

| | | Accumulated 2021 | | | | Accumulated 2020 | | | | |
|---------|---------------------------|----------------------|----------------------|---------------|---------------|----------------------|----------------------|---------------|---------------|----------------|
| Airline | | Incoming Cargo (Ton) | Outgoing Cargo (Ton) | Cargo (Ton) | Rate of Total | Incoming Cargo (Ton) | Outgoing Cargo (Ton) | Cargo (Ton) | Rate of Total | Rate of Change |
| RO | TAROM - RUMANIAN AIR TRAN | 18 | 7 | 25 | 0.10% | 37 | 27 | 65 | 0.15% | -61.53% |
| OS | AUSTRIAN AIRLINES | 16 | 3 | 19 | 0.08% | 26 | 21 | 47 | 0.11% | -59.57% |
| A3 | AEGEAN AIRLINES | 14 | 2 | 16 | 0.06% | 24 | 61 | 84 | 0.20% | -80.95% |
| LO | LOT POLISH AIRLINES | 13 | 1 | 15 | 0.06% | 65 | 22 | 87 | 0.20% | -82.75% |
| 9U | AIR MOLDOVA | 2 | 9 | 11 | 0.04% | 1 | 4 | 6 | 0.01% | 83.33% |
| HY | UZBEKISTAN AIR | 2 | 2 | 4 | 0.01% | 71 | 68 | 139 | 0.33% | -97.12% |
| | OTHERS | 190 | 114 | 305 | 1.32% | 2,627 | 1,344 | 3,970 | 9.56% | -92.31% |
| | TOTAL | 11,196 | 11,772 | 22,968 | | 23,440 | 18,045 | 41,487 | | -44.63% |





Cargo Handling on Cargo Aircrafts

Distribution by Airlines May

| | | May 2021 | | | | May 2020 | | | | |
|---------|------------------------|----------------------|----------------------|-------------|---------------|----------------------|----------------------|-------------|---------------|----------------|
| Airline | | Incoming Cargo (Ton) | Outgoing Cargo (Ton) | Cargo (Ton) | Rate of Total | Incoming Cargo (Ton) | Outgoing Cargo (Ton) | Cargo (Ton) | Rate of Total | Rate of Change |
| ICL | C.A.L ISRAELI CARGO | 4,205 | 2,016 | 6,221 | 26.63% | 1,620 | 558 | 2,178 | 8.43% | 185.62% |
| LY | EL AL ISRAEL AIRLINES | 2,528 | 1,464 | 3,992 | 17.09% | 5,492 | 3,797 | 9,289 | 35.97% | -57.02% |
| TK | TURKISH AIRLINES | 2,865 | 805 | 3,670 | 15.71% | 1,446 | 619 | 2,066 | 8.00% | 77.63% |
| QY | EUROPEAN AIR TRANSPORT | 1,236 | 921 | 2,157 | 9.23% | 960 | 682 | 1,642 | 6.35% | 31.36% |
| MNB | MNG CARGO AIRLINES | 1,402 | 258 | 1,660 | 7.10% | 806 | 256 | 1,062 | 4.11% | 56.30% |
| LH | LUFTHANSA | 665 | 393 | 1,058 | 4.52% | 606 | 521 | 1,127 | 4.36% | -6.12% |
| AZG | SILK WAY WEST AIRLINES | 529 | 519 | 1,048 | 4.48% | 738 | 676 | 1,414 | 5.47% | -25.88% |
| FX | FEDERAL EXPRESS | 563 | 411 | 973 | 4.16% | 435 | 354 | 789 | 3.05% | 23.32% |
| EY | ETIHAD AIRWAYS | 207 | 185 | 391 | 1.67% | | | | | |
| CX | CATHAY PACIFIC AIRWAYS | 207 | 152 | 359 | 1.53% | 55 | 27 | 82 | 0.31% | |
| ABD | ATLANTA ICELANDIC | 247 | 109 | 356 | 1.52% | | | | | |
| 3V | ASL AIRLINES BELGIUM | 222 | 128 | 350 | 1.49% | 290 | 173 | 464 | 1.79% | -24.56% |
| HU | HAINAN AIRLINES | 300 | 13 | 313 | 1.34% | 26 | 3 | 29 | 0.11% | |
| PC | PEGASUS AIRLINES | 123 | 19 | 142 | 0.60% | | | | | |
| KE | KOREAN AIR | 92 | 22 | 115 | 0.49% | | | | | |
| F7 | I FLY LTD | 106 | 7 | 113 | 0.48% | | | | | |
| M4 | POSTE AIR CARGO | 66 | 33 | 98 | 0.41% | | | | | |
| ADB | ANTONOV AIRLINES | | 79 | 79 | 0.33% | | | | | |
| ET | ETHIOPIAN AIRLINES | 52 | 26 | 78 | 0.33% | 1 | 54 | 55 | 0.21% | 41.81% |
| IFC | INDIA AIR FORCE | | 63 | 63 | 0.26% | | | | | |
| 3U | SICHUAN AIRLINES | 35 | 14 | 49 | 0.20% | 254 | 63 | 316 | 1.22% | -84.49% |
| PLM | WAMOS AIR | 37 | | 37 | 0.15% | | | | | |





Cargo Handling on Cargo Aircrafts

Distribution by Airlines May

| Airline | May 2021 | | | | May 2020 | | | | |
|---------|----------------------|----------------------|-------------|---------------|----------------------|----------------------|-------------|---------------|----------------|
| | Incoming Cargo (Ton) | Outgoing Cargo (Ton) | Cargo (Ton) | Rate of Total | Incoming Cargo (Ton) | Outgoing Cargo (Ton) | Cargo (Ton) | Rate of Total | Rate of Change |
| OTHERS | 9 | 23 | 32 | 0.13% | 2,829 | 2,478 | 5,306 | 20.55% | -99.39% |
| TOTAL | 15,695 | 7,661 | 23,356 | | 15,557 | 10,262 | 25,819 | | -9.53% |





Accumulated Cargo Handling on Cargo Aircrafts

Distribution by Airline

| | | Accumulated 2021 | | | | Accumulated 2020 | | | | |
|---------|------------------------|----------------------|----------------------|-------------|---------------|----------------------|----------------------|-------------|---------------|----------------|
| Airline | | Incoming Cargo (Ton) | Outgoing Cargo (Ton) | Cargo (Ton) | Rate of Total | Incoming Cargo (Ton) | Outgoing Cargo (Ton) | Cargo (Ton) | Rate of Total | Rate of Change |
| ICL | C.A.L ISRAELI CARGO | 18,663 | 10,415 | 29,078 | 23.30% | 9,153 | 6,390 | 15,544 | 16.78% | 87.06% |
| LY | EL AL ISRAEL AIRLINES | 12,901 | 8,688 | 21,588 | 17.29% | 13,085 | 7,823 | 20,908 | 22.57% | 3.25% |
| TK | TURKISH AIRLINES | 12,145 | 3,316 | 15,461 | 12.38% | 5,958 | 2,295 | 8,253 | 8.91% | 87.33% |
| QY | EUROPEAN AIR TRANSPORT | 5,694 | 4,202 | 9,896 | 7.92% | 4,557 | 3,097 | 7,654 | 8.26% | 29.29% |
| MN B | MNG CARGO AIRLINES | 6,402 | 1,257 | 7,659 | 6.13% | 4,219 | 1,289 | 5,508 | 5.94% | 39.05% |
| AZG | SILK WAY WEST AIRLINES | 3,527 | 3,859 | 7,386 | 5.91% | 3,687 | 3,275 | 6,962 | 7.51% | 6.09% |
| LH | LUFTHANSA | 3,922 | 2,552 | 6,473 | 5.18% | 2,864 | 2,279 | 5,143 | 5.55% | 25.86% |
| FX | FEDERAL EXPRESS | 2,493 | 1,873 | 4,366 | 3.49% | 2,111 | 1,686 | 3,797 | 4.09% | 14.98% |
| HU | HAINAN AIRLINES | 3,560 | 74 | 3,634 | 2.91% | 97 | 28 | 125 | 0.13% | |
| 3V | ASL AIRLINES BELGIUM | 1,306 | 780 | 2,086 | 1.67% | 1,397 | 814 | 2,211 | 2.38% | -5.65% |
| CX | CATHAY PACIFIC AIRWAYS | 1,091 | 832 | 1,923 | 1.54% | 79 | 41 | 120 | 0.12% | |
| ET | ETHIOPIAN AIRLINES | 664 | 407 | 1,071 | 0.85% | 158 | 70 | 228 | 0.24% | |
| 3U | SICHUAN AIRLINES | 627 | 213 | 840 | 0.67% | 540 | 106 | 646 | 0.69% | 30.03% |
| EY | ETIHAD AIRWAYS | 279 | 353 | 632 | 0.50% | | | | | |
| PC | PEGASUS AIRLINES | 456 | 168 | 624 | 0.50% | | | | | |
| KE | KOREAN AIR | 261 | 277 | 538 | 0.43% | 30 | 10 | 40 | 0.04% | |
| ABD | ATLANTA ICELANDIC | 335 | 202 | 537 | 0.43% | | | | | |
| F7 | I FLY LTD | 482 | 49 | 532 | 0.42% | | | | | |
| ADB | ANTONOV AIRLINES | 42 | 180 | 222 | 0.17% | 75 | | 75 | 0.08% | 196.00% |
| M4 | POSTE AIR CARGO | 120 | 65 | 186 | 0.14% | | | | | |
| IFC | INDIA AIR FORCE | | 63 | 63 | 0.05% | | | | | |
| PLM | WAMOS AIR | 37 | | 37 | 0.02% | | | | | |





Accumulated Cargo Handling on Cargo Aircrafts

Distribution by Airline

| Airline | Accumulated 2021 | | | | Accumulated 2020 | | | | |
|---------|----------------------|----------------------|-------------|---------------|----------------------|----------------------|-------------|---------------|----------------|
| | Incoming Cargo (Ton) | Outgoing Cargo (Ton) | Cargo (Ton) | Rate of Total | Incoming Cargo (Ton) | Outgoing Cargo (Ton) | Cargo (Ton) | Rate of Total | Rate of Change |
| OTHERS | 4,970 | 4,993 | 9,964 | 7.98% | 8,770 | 6,637 | 15,406 | 16.63% | -35.32% |
| TOTAL | 79,976 | 44,818 | 124,796 | | 56,779 | 35,840 | 92,621 | | 34.73% |





Cargo Handling on Cargo Aircrafts

Distribution by Countries for May

| Country | May 2021 | | | | May 2020 | | | | |
|----------------------|----------------------|----------------------|---------------|---------------|----------------------|----------------------|---------------|---------------|----------------|
| | Incoming Cargo (Ton) | Outgoing Cargo (Ton) | Cargo (Ton) | Rate of Total | Incoming Cargo (Ton) | Outgoing Cargo (Ton) | Cargo (Ton) | Rate of Total | Rate of Change |
| BELGIUM | 3,894 | 3,432 | 7,327 | 31.37% | 2,741 | 3,449 | 6,190 | 23.97% | 18.36% |
| TURKEY | 3,567 | 1,083 | 4,650 | 19.90% | 1,489 | 876 | 2,364 | 9.15% | 96.70% |
| GERMANY | 2,985 | 947 | 3,932 | 16.83% | 2,899 | 1,550 | 4,449 | 17.23% | -11.62% |
| CHINA | 2,906 | 629 | 3,535 | 15.13% | 3,493 | 303 | 3,796 | 14.70% | -6.87% |
| AZERBAIJAN | 530 | 519 | 1,049 | 4.49% | 738 | 676 | 1,414 | 5.47% | -25.81% |
| NORWAY | 857 | 9 | 867 | 3.71% | 1,252 | | 1,252 | 4.84% | -30.75% |
| UNITED ARAB EMIRATES | 207 | 263 | 470 | 2.01% | 16 | | 16 | 0.06% | |
| CYPRUS | 318 | 95 | 413 | 1.76% | 798 | 108 | 906 | 3.50% | -54.41% |
| FRANCE | 106 | 200 | 306 | 1.31% | 188 | 237 | 425 | 1.64% | -28.00% |
| EGYPT | | 300 | 300 | 1.28% | | | | | |
| RUSSIAN FEDERATION | 106 | 7 | 113 | 0.48% | | 35 | 35 | 0.13% | |
| ITALY | 70 | 37 | 107 | 0.45% | 205 | 15 | 219 | 0.84% | -51.14% |
| ETHIOPIA | 52 | 26 | 78 | 0.33% | 1 | 54 | 55 | 0.21% | 41.81% |
| INDIA | 1 | 77 | 78 | 0.33% | 89 | 64 | 153 | 0.59% | -49.01% |
| GREECE | 56 | 8 | 65 | 0.27% | | 2 | 2 | | |
| SPAIN | 37 | | 37 | 0.15% | 161 | 439 | 600 | 2.32% | -93.83% |
| SOUTH KOREA | | 22 | 22 | 0.09% | | | | | |
| OTHERS | 2 | 6 | 8 | 0.03% | 1,489 | 2,453 | 3,942 | 15.26% | -99.79% |
| TOTAL | 15,695 | 7,661 | 23,356 | | 15,557 | 10,262 | 25,819 | | -9.53% |





Accumulated Cargo Handling on Cargo Aircrafts

Distribution by Countries

| Countries | Accumulated 2021 | | | | Accumulated 2020 | | | | |
|----------------------|----------------------|----------------------|----------------|---------------|----------------------|----------------------|---------------|---------------|----------------|
| | Incoming Cargo (Ton) | Outgoing Cargo (Ton) | Cargo (Ton) | Rate of Total | Incoming Cargo (Ton) | Outgoing Cargo (Ton) | Cargo (Ton) | Rate of Total | Rate of Change |
| BELGIUM | 18,589 | 18,938 | 37,528 | 30.07% | 15,237 | 16,503 | 31,740 | 34.26% | 18.23% |
| TURKEY | 17,332 | 4,773 | 22,105 | 17.71% | 8,753 | 4,441 | 13,195 | 14.24% | 67.52% |
| GERMANY | 12,536 | 5,313 | 17,849 | 14.30% | 10,839 | 5,830 | 16,669 | 17.99% | 7.07% |
| CHINA | 13,735 | 2,829 | 16,564 | 13.27% | 5,656 | 497 | 6,153 | 6.64% | 169.20% |
| AZERBAIJAN | 3,528 | 3,859 | 7,388 | 5.92% | 3,645 | 3,275 | 6,920 | 7.47% | 6.76% |
| NORWAY | 4,428 | 50 | 4,478 | 3.58% | 4,199 | | 4,199 | 4.53% | 6.64% |
| CYPRUS | 1,978 | 373 | 2,351 | 1.88% | 3,635 | 127 | 3,762 | 4.06% | -37.50% |
| FRANCE | 493 | 1,107 | 1,600 | 1.28% | 502 | 620 | 1,121 | 1.21% | 42.72% |
| EGYPT | | 1,591 | 1,591 | 1.27% | 7 | | 7 | | |
| RUSSIAN FEDERATION | 866 | 556 | 1,421 | 1.13% | 18 | 124 | 142 | 0.15% | |
| SPAIN | 1,096 | 284 | 1,380 | 1.10% | 950 | 439 | 1,389 | 1.49% | -0.64% |
| ETHIOPIA | 664 | 407 | 1,071 | 0.85% | 158 | 66 | 224 | 0.24% | |
| UNITED ARAB EMIRATES | 279 | 431 | 710 | 0.56% | 16 | | 16 | 0.01% | |
| ITALY | 299 | 148 | 447 | 0.35% | 246 | 91 | 337 | 0.36% | 32.64% |
| SOUTH KOREA | 36 | 292 | 328 | 0.26% | 62 | 53 | 115 | 0.12% | 185.21% |
| INDIA | 59 | 125 | 184 | 0.14% | 111 | 99 | 211 | 0.22% | -12.79% |
| GREECE | 56 | 37 | 93 | 0.07% | 37 | 2 | 40 | 0.04% | 132.50% |
| OTHERS | 4,002 | 3,704 | 7,706 | 6.17% | 2,708 | 3,672 | 6,381 | 6.88% | 20.76% |
| TOTAL | 79,976 | 44,818 | 124,796 | | 56,779 | 35,840 | 92,621 | | 34.73% |



Domestic Activity

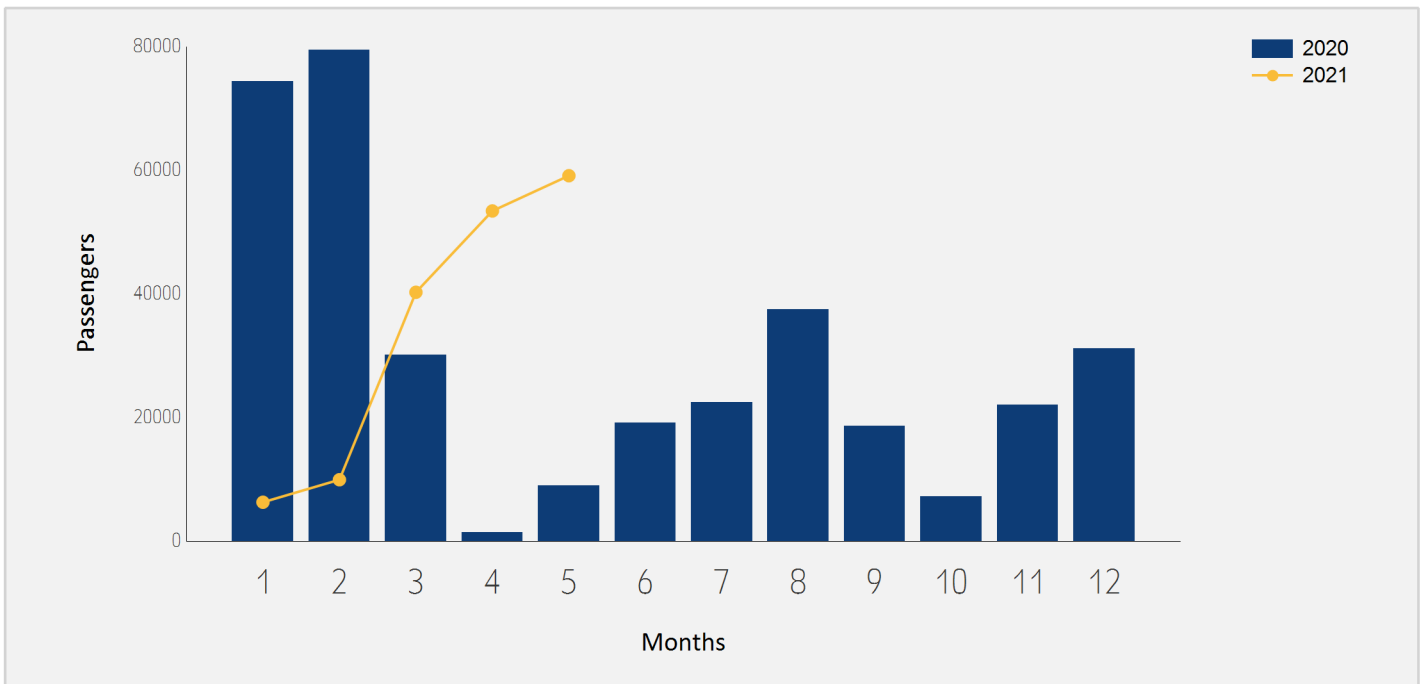




Domestic Passenger Traffic

Distribution by Months

| Month | 2021 | 2020 | Rate of Change |
|--------------|----------------|----------------|----------------|
| January | 6,294 | 74,380 | -91.53% |
| February | 9,936 | 79,475 | -87.49% |
| March | 40,263 | 30,137 | 33.59% |
| April | 53,421 | 1,412 | |
| May | 59,124 | 8,989 | |
| Total | 169,038 | 194,393 | -13.04% |

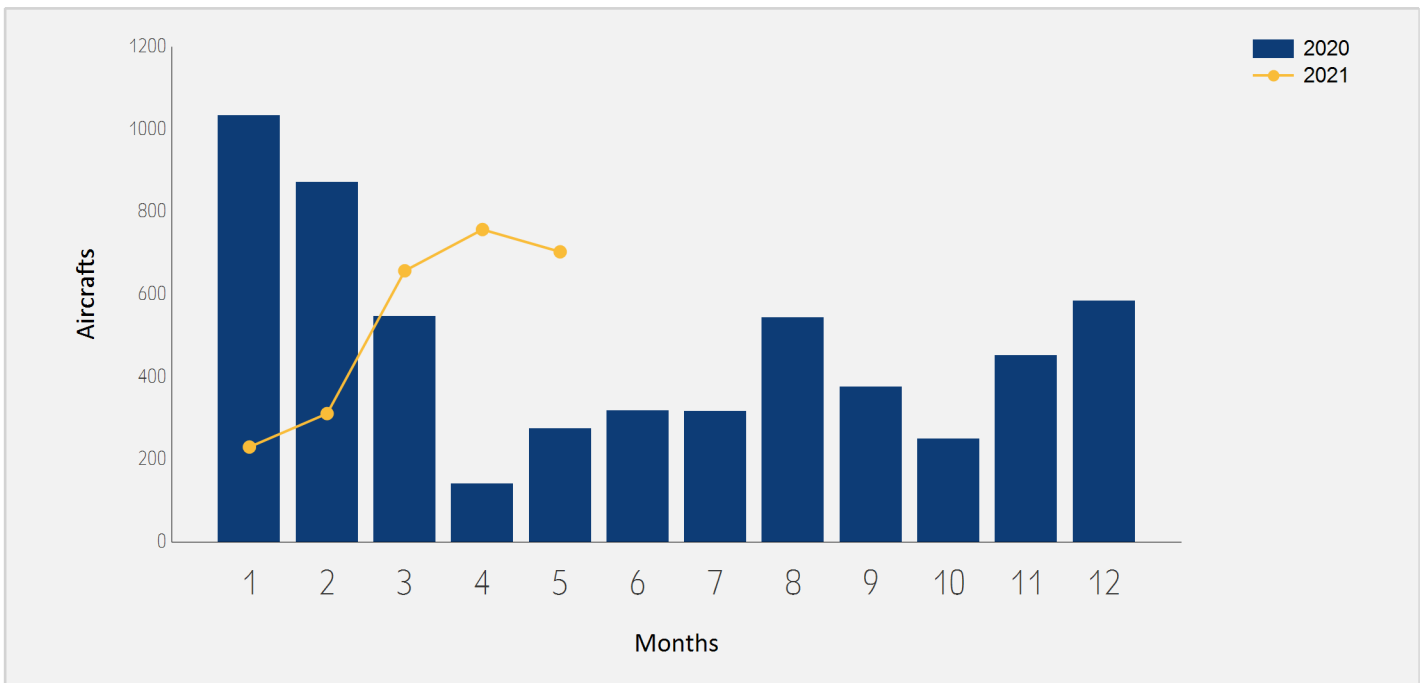




Domestic Aircrafts Traffic

Distribution by Months

| Month | 2021 | 2020 | Rate of Change |
|--------------|--------------|--------------|----------------|
| January | 230 | 1,033 | -77.73% |
| February | 311 | 871 | -64.29% |
| March | 657 | 547 | 20.10% |
| April | 757 | 141 | |
| May | 703 | 274 | 156.56% |
| Total | 2,658 | 2,866 | -7.25% |





Domestic Passengers Traffic

Distribution by Airlines for May

| | | May 2021 | | May 2020 | | |
|---------|------------------------|---------------|---------------|--------------|---------------|----------------|
| Airline | | Passengers | Rate of Total | Passengers | Rate of Total | Rate of Change |
| IZ | ARKIA ISRAELI AIRLINES | 35,904 | 60.72% | | | |
| 6H | ISRAIR AIRLINES | 23,186 | 39.21% | 8,941 | 99.46% | 159.32% |
| | OTHERS | 34 | 0.05% | 48 | 0.53% | -29.16% |
| | TOTAL | 59,124 | | 8,989 | | |

Accumulated Domestic Passengers Traffic

Distribution by Airlines

| | | Accumulated 2021 | | Accumulated 2020 | | |
|---------|------------------------|------------------|---------------|------------------|---------------|----------------|
| Airline | | Passengers | Rate of Total | Passengers | Rate of Total | Rate of Change |
| IZ | ARKIA ISRAELI AIRLINES | 87,753 | 51.91% | 141,463 | 72.77% | -37.96% |
| 6H | ISRAIR AIRLINES | 80,997 | 47.91% | 52,757 | 27.13% | 53.52% |
| | OTHERS | 288 | 0.17% | 173 | 0.08% | 66.47% |
| | TOTAL | 169,038 | | 194,393 | | -13.04% |





Domestic Passenger Traffic

Distribution by Destinations for May

| Destination | May 2021 | | May 2020 | | Rate of Change |
|--------------|---------------|---------------|--------------|---------------|----------------|
| | Passengers | Rate of Total | Passengers | Rate of Total | |
| RAMON | 59,108 | 99.97% | 8,965 | 99.73% | |
| OTHERS | 16 | 0.02% | 24 | 0.26% | -33.33% |
| TOTAL | 59,124 | | 8,989 | | |

Accumulated Domestic Passenger Traffic

Distribution by Destinations

| Destination | Accumulated 2021 | | Accumulated 2020 | | Rate of Change |
|--------------|------------------|---------------|------------------|---------------|----------------|
| | Passengers | Rate of Total | Passengers | Rate of Total | |
| RAMON | 168,602 | 99.74% | 193,136 | 99.35% | -12.70% |
| OTHERS | 436 | 0.25% | 1,257 | 0.64% | -65.31% |
| TOTAL | 169,038 | | 194,393 | | -13.04% |

