

November 2021

Monthly Report

Ben Gurion International Airport



Israel Airport Authority

Ben Gurion International Airport

Produced by the Industry & Management Department

This report is protected by copyright and is the exclusive property of the Israel Airports Authority.

It must be emphasized that the data in the report are based on the reports of the airlines, and received under their responsibility.

The information is intended for personal use, and therefore may not be quoted or passed on to any third party without written permission from the Israel Airports Authority.

In addition, no commercial use may be made of this report.

Edit Yehoshua

Activity Coordinator

Tel. +972-3-9752017

Email: edity@iaa.gov.il

Rachel Lehava

Manager, Industrial & Management Dep.

Tel. +972-3-9752019

Email: rachelle@iaa.gov.il

Yossi Tzemach

Head, Industrial & Management Dep.

Tel. +972-3-9752020

Email: yossiz@iaa.gov.il



Dear friends and partners,

I hereby respectfully submit for your review a report summarizing the aviation activity at Ben - Gurion International Airport in November 2021.

During the month, a total of 1,001,184 passengers on 8,848 international and domestic flights passed through Ben- Gurion Airport.

International passenger traffic in November totaled 930,246 passengers.

International aircraft traffic totaled 7,920 flights, representing.

International passenger traffic at Terminal 3 this month totaled 929,601 passengers.

Passengers on International flights from Terminal 1, totaled 645 on in coming flights.

On domestic flights 70,938 passengers passed through Ben- Gurion Airport this month, compared with 22,021 in November 2020.

Israeli airlines carried 274,010 passengers in this month, 29.45% of all travelers passing through Ben - Gurion Airport.

The airlines which contributed the most to the increase of passenger traffic this month are: EL AL ISRAEL AIRLINES, RYANAIR and TURKISH AIRLINES.

The Destination with the highest volume of activity was DUBAI with a total of 58,525 passengers to and from.

The country with the highest volume of activity was the TURKEY, with 126,057 passengers, constituting 13.55% of all activity.

The countries which contributed the most to the increase of passenger traffic this month are: TURKEY, UNITED STATES and ITALY.

Cargo transportation this month stood at 35,694 tons and reflects an increase of 18.78% compared to November 2020. 12,617 tons were transported in passenger aircraft and 23,077 tons in cargo aircraft.

Below you will find additional tables providing details about movements of aircraft, passengers and cargo at Ben - Gurion International Airport.

Sincerely yours,

Shmuel Zakay

Managing Director,

Ben-Gurion International Airport



Content



Aviation Activity

Aviation Activity Summary	1
International Activity Summary	2 - 4
Domestic Activity Summary	5



International Activity

Distribution By Months	7 - 8
Distribution By Airlines	9 - 19
Distribution By Countries	20 - 25
Distribution By First Destination	26 - 41



Cargo Activity

Distribution by Transporter	43
Distribution By Months	43
Distribution By Airlines	44 - 48
Distribution By Countries	49 - 51



Domestic Activity

Distribution By Months	53 - 54
Distribution By Airlines	55
Distribution By Destinations	56





Passengers and Aircrafts

Aviation Activity at Ben Gurion International Airport

International Activity

	Current Month			Accumulated Since the beginning of the year		
	November 2021	November 2020	Rate Of Change	2021	2020	Rate Of Change
Incoming Aircrafts	3,954	1,476	167.88%	29,723	22,921	29.67%
Outgoing Aircrafts	3,966	1,472	169.42%	29,727	22,901	29.80%
Total Aircrafts	7,920	2,948	168.65%	59,450	45,822	29.74%
Incoming Passengers	451,823	82,327		2,684,096	2,132,607	25.85%
Outgoing Passengers	478,423	64,839		2,743,850	2,118,221	29.53%
Transit Passengers	17	2		155	1,993	-92.22%
Total Passengers	930,246	147,166		5,427,946	4,250,828	27.69%

Domestic Activity

	Current Month			Accumulated Since the beginning of the year		
	November 2021	November 2020	Rate Of Change	2021	2020	Rate Of Change
Aircrafts	928	451	105.76%	7,438	5,118	45.33%
Passengers	70,938	22,021		564,508	321,232	75.73%

International and Domestic Activity Summary

	Current Month			Accumulated Since the beginning of the year		
	November 2021	November 2020	Rate Of Change	2021	2020	Rate Of Change
Aircrafts	8,848	3,399	160.31%	66,888	50,940	31.30%
Passengers	1,001,184	169,187		5,992,454	4,572,060	31.06%





Passengers and Aircrafts

Int'l Aviation Activity at Ben Gurion International Airport by Terminal

Terminal 3

	Current Month			Accumulated Since the beginning of the year		
	November 2021	November 2020	Rate of Change	2021	2020	Rate of Change
Incoming Aircrafts	3,947	1,476	167.41%	29,363	22,921	28.10%
Outgoing Aircrafts	3,966	1,139		29,500	20,465	44.14%
Total Aircrafts	7,913	2,615		58,863	43,386	35.67%
Incoming Passengers	451,178	82,327		2,651,931	2,132,607	24.35%
Outgoing Passengers	478,423	33,724		2,721,815	1,790,670	51.99%
Transit Passengers	17	2		155	1,993	-92.22%
Total Passengers	929,601	116,051		5,373,746	3,923,277	36.97%

Terminal 1

	Current Month			Accumulated Since the beginning of the year		
	November 2021	November 2020	Rate of Change	2021	2020	Rate of Change
Incoming Aircrafts	7			360		
Outgoing Aircrafts		333	-100.00%	227	2,436	-90.68%
Total Aircrafts	7	333	-97.89%	587	2,436	-75.90%
Incoming Passengers	645			32,165		
Outgoing Passengers		31,115	-100.00%	22,035	327,551	-93.27%
Total Passengers	645	31,115	-97.92%	54,200	327,551	-83.45%





Passengers and Aircrafts

Int'l Aviation Activity at Ben Gurion International Airport by Flight Type

Schedule and Charter Flights

	Current Month			Accumulated Since the beginning of the year		
	November 2021	November 2020	Rate of Change	2021	2020	Rate of Change
Incoming Aircrafts	3,212	775		21,397	16,374	30.67%
Outgoing Aircrafts	3,243	792		21,536	16,547	30.15%
Total Aircrafts	6,455	1,567		42,933	32,921	30.41%
Incoming Passengers	450,671	81,239		2,670,767	2,123,164	25.79%
Outgoing Passengers	477,224	63,884		2,731,038	2,108,642	29.51%
Transit Passengers	17	2		152	1,984	-92.33%
Total Passengers	927,895	145,123		5,401,805	4,231,806	27.64%

Private Flights

	Current Month			Accumulated Since the beginning of the year		
	November 2021	November 2020	Rate of Change	2021	2020	Rate of Change
Incoming Aircrafts	319	281	13.52%	3,728	2,444	52.53%
Outgoing Aircrafts	323	278	16.18%	3,692	2,437	51.49%
Total Aircrafts	642	559	14.84%	7,420	4,881	52.01%
Incoming Passengers	754	951	-20.71%	11,165	7,356	51.78%
Outgoing Passengers	839	820	2.31%	10,956	7,716	41.99%
Total Passengers	1,593	1,771	-10.05%	22,121	15,072	46.76%





Passengers and Aircrafts

Int'l Aviation Activity at Ben Gurion International Airport by Flight Type

Cargo Flights

	Current Month			Accumulated Since the beginning of the year		
	November 2021	November 2020	Rate of Change	2021	2020	Rate of Change
Incoming Aircrafts	398	409	-2.68%	4,333	3,911	10.79%
Outgoing Aircrafts	373	389	-4.11%	4,241	3,719	14.03%
Total Aircrafts	771	798	-3.38%	8,574	7,630	12.37%
Incoming Passengers	22	15	46.66%	190	260	-26.92%
Outgoing Passengers	25	14	78.57%	281	384	-26.82%
Total Passengers	47	29	62.06%	471	644	-26.86%

Other Flights

	Current Month			Accumulated Since the beginning of the year		
	November 2021	November 2020	Rate of Change	2021	2020	Rate of Change
Incoming Aircrafts	25	11	127.27%	265	192	38.02%
Outgoing Aircrafts	27	13	107.69%	258	198	30.30%
Total Aircrafts	52	24	116.66%	523	390	34.10%
Incoming Passengers	376	122		1,974	1,827	8.04%
Outgoing Passengers	335	121	176.85%	1,575	1,479	6.49%
Total Passengers	711	243	192.59%	3,549	3,306	7.35%





Passengers and Aircrafts

Domestic Aviation Activity at Ben Gurion International Airport by Flight Type

Schedule Flights

	Current Month			Accumulated Since the beginning of the year		
	November 2021	November 2020	Rate of Change	2021	2020	Rate of Change
Aircrafts	842	353	138.52%	6,353	3,843	65.31%
Passengers	70,888	21,933		563,052	320,497	75.68%

Private Flights

	Current Month			Accumulated Since the beginning of the year		
	November 2021	November 2020	Rate of Change	2021	2020	Rate of Change
Aircrafts	39	41	-4.87%	581	571	1.75%
Passengers	46	36	27.77%	514	483	6.41%

Other Flights

	Current Month			Accumulated Since the beginning of the year		
	November 2021	November 2020	Rate of Change	2021	2020	Rate of Change
Aircrafts	47	57	-17.54%	504	704	-28.40%
Passengers	4	52	-92.30%	942	252	



International Activity

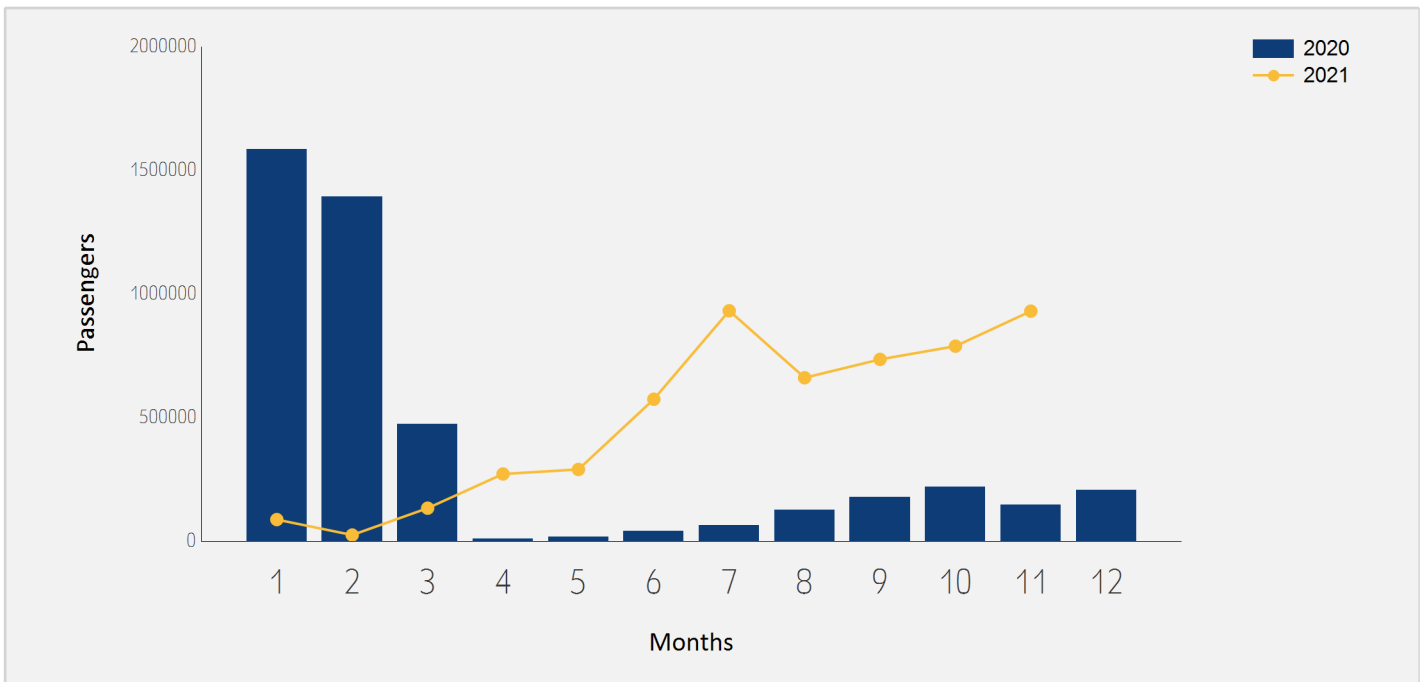




International Passenger Traffic

Distribution by Months

Months	2021	2020	Rate of Change
January	87,196	1,584,027	-94.49%
February	24,755	1,391,803	-98.22%
March	133,322	471,904	-71.74%
April	271,714	9,377	
May	290,051	18,225	
June	574,093	40,970	
July	931,861	64,001	
August	660,896	126,353	
September	735,217	176,877	
October	788,595	220,125	
November	930,246	147,166	
Total	5,427,946	4,250,828	27.69%

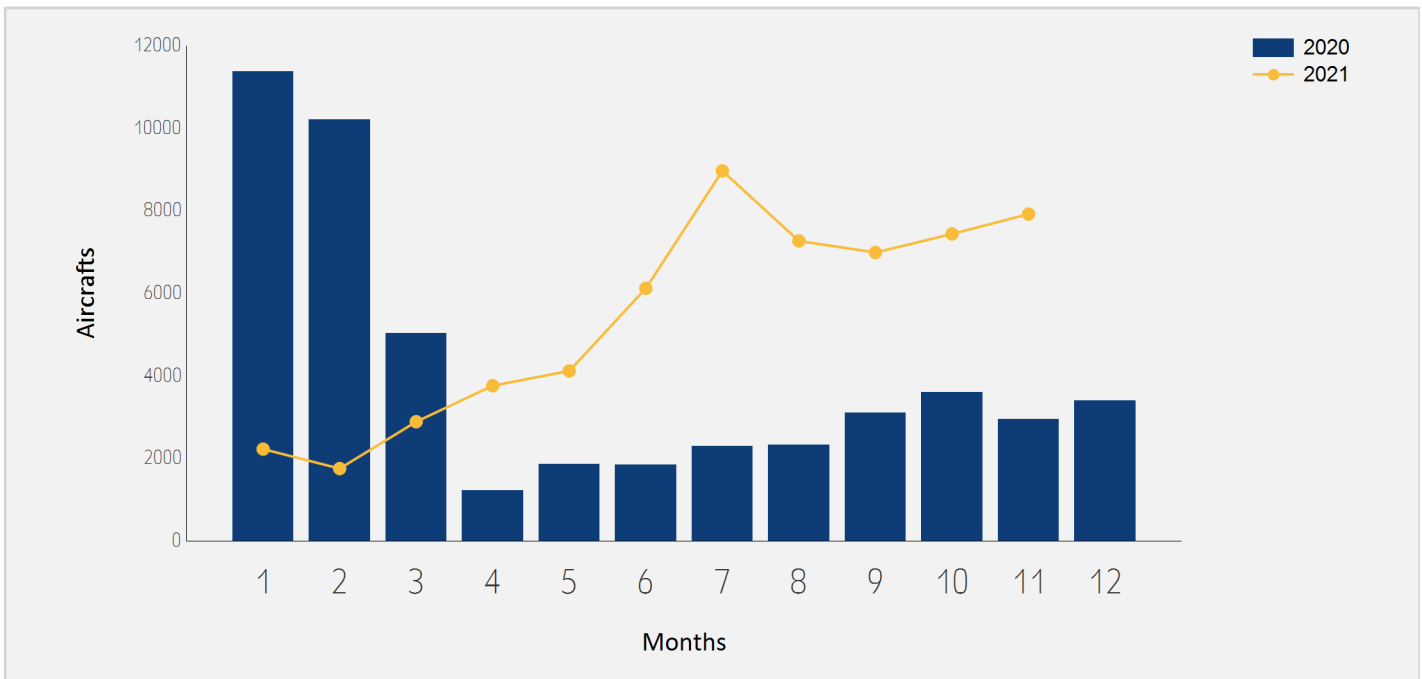




International Aircraft Traffic

Distribution by Months

Months	2021	2020	Rate of Change
January	2,225	11,374	-80.43%
February	1,753	10,207	-82.82%
March	2,888	5,038	-42.67%
April	3,761	1,225	
May	4,119	1,863	121.09%
June	6,120	1,849	
July	8,967	2,291	
August	7,269	2,328	
September	6,989	3,104	125.16%
October	7,439	3,595	106.92%
November	7,920	2,948	168.65%
Total	59,450	45,822	29.74%





International Passenger Traffic

Distribution by Airline for November

		November 2021		November 2020		
Airline		Passengers	Rate of Total	Passengers	Rate of Total	Rate of Change
LY	EL AL ISRAEL AIRLINES	193,278	20.77%	25,768	17.50%	
FR	RYANAIR	115,078	12.37%	2,282	1.55%	
TK	TURKISH AIRLINES	71,951	7.73%	20,878	14.18%	
6H	ISRAIR AIRLINES	52,383	5.63%	6,651	4.51%	
PC	PEGASUS AIRLINES	44,226	4.75%	22,377	15.20%	97.64%
EZY	EASYJET	41,343	4.44%	568	0.38%	
UA	UNITED AIRLINES	38,256	4.11%	15,110	10.26%	153.18%
W6	WIZZAIR	36,156	3.88%	260	0.17%	
IZ	ARKIA ISRAELI AIRLINES	28,104	3.02%	5,162	3.50%	
LH	LUFTHANSA	24,811	2.66%	5,485	3.72%	
FZ	FLYDUBAI	22,517	2.42%	3,203	2.17%	
TO	TRANSAVIA FRANCE	17,814	1.91%	1,534	1.04%	
AA	AMERICAN AIRLINES	17,373	1.86%			
PS	UKRAINE INTL AIR	16,974	1.82%	6,286	4.27%	170.02%
DL	DELTA AIRLINES	13,991	1.50%	4,277	2.90%	
AF	AIR FRANCE	12,853	1.38%	3,402	2.31%	
LX	SWISS INT'L AIRLINES	12,065	1.29%	928	0.63%	
BA	BRITISH AIRWAYS PLC	11,563	1.24%	739	0.50%	
A3	AEGEAN AIRLINES	11,253	1.20%	4,103	2.78%	174.26%
VS	VIRGIN ATLANTIC AIRWAYS	10,973	1.17%	951	0.64%	
IB	IBERIA	9,621	1.03%			





International Passenger Traffic

Distribution by Airline for November

		November 2021		November 2020		
Airline		Passengers	Rate of Total	Passengers	Rate of Total	Rate of Change
BZ	BLUE BIRD AIRWAYS	8,905	0.95%	1,602	1.08%	
KL	K.L.M.	8,138	0.87%			
OS	AUSTRIAN AIRLINES	8,006	0.86%	1,056	0.71%	
SU	AEROFLOT RUSSIAN AIRLINES	7,977	0.85%	2,675	1.81%	198.20%
QS	SMARTWINGS	7,643	0.82%			
LO	LOT POLISH AIRLINES	6,985	0.75%			
AC	AIR CANADA	5,774	0.62%	1,532	1.04%	
AZ	ITALYA TRASPORTO AEREO	5,317	0.57%			
UX	AIR EUROPA Lineas Aereas	5,124	0.55%			
ET	ETHIOPIAN AIRLINES	5,016	0.53%	2,724	1.85%	84.14%
U8	TUS AIRWAYS	4,914	0.52%			
TWI	TAILWIND AIRLINES	4,747	0.51%			
A9	GEORGIAN AIRWAYS	4,307	0.46%			
HV	TRANSAVIA	3,675	0.39%			
TP	AIR PORTUGAL	3,605	0.38%			
XC	CORONDON AIRLINES	2,846	0.30%			
SN	BRUSSELS AIRLINES	2,789	0.29%			
EY	ETIHAD AIRWAYS	2,593	0.27%	294	0.19%	
RO	TAROM - RUMANIAN AIR TRAN	2,318	0.24%	42	0.02%	
FH	FREEBIRD AIRLINES	2,202	0.23%			
AI	AIR INDIA	2,034	0.21%	442	0.30%	





International Passenger Traffic

Distribution by Airline for November

		November 2021		November 2020		
Airline		Passengers	Rate of Total	Passengers	Rate of Total	Rate of Change
HM	AIR SEYCHELLES	1,890	0.20%	1,747	1.18%	8.18%
B2	BELAVIA AIRLINE	1,756	0.18%	838	0.56%	109.54%
FB	BULGARIA AIR	1,598	0.17%			
HY	UZBEKISTAN AIR	1,568	0.16%			
GF	GULF AIR - BAHREIN	1,480	0.15%	59	0.04%	
9U	AIR MOLDOVA	1,383	0.14%	947	0.64%	46.04%
J2	AZERBAIJAN AIRLINES	1,307	0.14%			
VY	VUELING AIRLINES S.A.	1,253	0.13%			
CX	CATHAY PACIFIC AIRWAYS	1,100	0.11%	371	0.25%	196.49%
ZT	TITAN AIRWAYS Ltd.	934	0.10%			
N4	NORD WIND	923	0.09%			
5F	FLYONE	904	0.09%			
BT	AIR BALTIC	866	0.09%			
MS	EGYPTAIR AIRLINES	685	0.07%			
ENT	ENTER AIR	613	0.06%			
PQ	SKYUP AIRLINES	391	0.04%			
BUC	EUROPEAN AIR CHARTER	377	0.04%			
PLM	WAMOS AIR	340	0.03%			
FV	ROSSIYA AIRLINES	282	0.03%			
RJ	ROYAL JORDANIAN	207	0.02%			
EAF	ELECTRA AIRWAYS	186	0.01%			





International Passenger Traffic

Distribution by Airline for November

		November 2021		November 2020		
	Airline	Passengers	Rate of Total	Passengers	Rate of Total	Rate of Change
D8	NORWEGIAN AIR SHUTTLE	114	0.01%			
	OTHERS	2,591	0.27%	2,873	1.95%	-9.81%
	TOTAL	930,246		147,166		





Int'l Accumulated Passenger Traffic

Distribution by Airline

		Accumulated 2021		Accumulated 2020		
Airline		Passengers	Rate of Total	Passengers	Rate of Total	Rate of Change
LY	EL AL ISRAEL AIRLINES	1,264,372	23.29%	862,615	20.29%	46.57%
FR	RYANAIR	434,584	8.00%	232,542	5.47%	86.88%
TK	TURKISH AIRLINES	318,093	5.86%	296,362	6.97%	7.33%
UA	UNITED AIRLINES	314,587	5.79%	250,588	5.89%	25.53%
6H	ISRAIR AIRLINES	310,149	5.71%	168,478	3.96%	84.08%
W6	WIZZAIR	240,110	4.42%	243,242	5.72%	-1.28%
IZ	ARKIA ISRAELI AIRLINES	206,747	3.80%	44,459	1.04%	
PC	PEGASUS AIRLINES	189,726	3.49%	151,992	3.57%	24.82%
EZY	EASYJET	180,835	3.33%	256,692	6.03%	-29.55%
LH	LUFTHANSA	165,599	3.05%	134,312	3.15%	23.29%
PS	UKRAINE INTL AIR	156,287	2.87%	107,392	2.52%	45.52%
DL	DELTA AIRLINES	140,582	2.58%	71,998	1.69%	95.25%
A3	AEGEAN AIRLINES	103,009	1.89%	80,969	1.90%	27.22%
FZ	FLYDUBAI	98,108	1.80%	3,203	0.07%	
AA	AMERICAN AIRLINES	92,223	1.69%			
BZ	BLUE BIRD AIRWAYS	89,195	1.64%	28,884	0.67%	
AF	AIR FRANCE	76,475	1.40%	84,884	1.99%	-9.90%
LX	SWISS INT'L AIRLINES	74,497	1.37%	56,568	1.33%	31.69%
OS	AUSTRIAN AIRLINES	68,948	1.27%	49,710	1.16%	38.70%
BA	BRITISH AIRWAYS PLC	59,939	1.10%	74,537	1.75%	-19.58%
KL	K.L.M.	54,337	1.00%	26,316	0.61%	106.47%





Int'l Accumulated Passenger Traffic

Distribution by Airline

		Accumulated 2021		Accumulated 2020		
Airline		Passengers	Rate of Total	Passengers	Rate of Total	Rate of Change
TO	TRANSAVIA FRANCE	52,520	0.96%	70,233	1.65%	-25.22%
SU	AEROFLOT RUSSIAN AIRLINES	50,323	0.92%	122,335	2.87%	-58.86%
AC	AIR CANADA	48,837	0.89%	40,257	0.94%	21.31%
QS	SMARTWINGS	47,345	0.87%	18,197	0.42%	160.18%
VS	VIRGIN ATLANTIC AIRWAYS	46,685	0.86%	29,065	0.68%	60.62%
ET	ETHIOPIAN AIRLINES	43,023	0.79%	37,892	0.89%	13.54%
LO	LOT POLISH AIRLINES	35,234	0.64%	46,302	1.08%	-23.90%
IB	IBERIA	32,972	0.60%	30,252	0.71%	8.99%
A9	GEORGIAN AIRWAYS	31,763	0.58%	23,240	0.54%	36.67%
B2	BELAVIA AIRLINE	25,153	0.46%	25,163	0.59%	-0.03%
9U	AIR MOLDOVA	24,560	0.45%	14,323	0.33%	71.47%
RO	TAROM - RUMANIAN AIR TRAN	21,384	0.39%	18,638	0.43%	14.73%
TWI	TAILWIND AIRLINES	20,989	0.38%	12,312	0.28%	70.47%
UX	AIR EUROPA Lineas Aereas	20,742	0.38%			
AZ	ITALYA TRASPORTO AEREO	19,066	0.35%	55,578	1.30%	-65.69%
U8	TUS AIRWAYS	18,713	0.34%			
SN	BRUSSELS AIRLINES	18,572	0.34%	22,958	0.54%	-19.10%
XC	CORONDON AIRLINES	17,022	0.31%	7,134	0.16%	138.60%
FH	FREEBIRD AIRLINES	16,358	0.30%	7,401	0.17%	121.02%
FB	BULGARIA AIR	14,753	0.27%	18,800	0.44%	-21.52%
HV	TRANSAVIA	14,339	0.26%	32,925	0.77%	-56.44%





Int'l Accumulated Passenger Traffic

Distribution by Airline

		Accumulated 2021		Accumulated 2020		
Airline		Passengers	Rate of Total	Passengers	Rate of Total	Rate of Change
BUC	EUROPEAN AIR CHARTER	12,376	0.22%	1,617	0.03%	
HM	AIR SEYCHELLES	11,112	0.20%	4,634	0.10%	139.79%
EY	ETIHAD AIRWAYS	8,821	0.16%	472	0.01%	
5F	FLYONE	8,772	0.16%	112		
AI	AIR INDIA	8,286	0.15%	21,922	0.51%	-62.20%
J2	AZERBAIJAN AIRLINES	7,822	0.14%	3,605	0.08%	116.97%
MJ	MYWAY AIRLINES	7,697	0.14%	7,166	0.16%	7.40%
TP	AIR PORTUGAL	7,337	0.13%	12,544	0.29%	-41.50%
HY	UZBEKISTAN AIR	7,262	0.13%	6,593	0.15%	10.14%
EAF	ELECTRA AIRWAYS	7,006	0.12%	767	0.01%	
BT	AIR BALTIC	6,661	0.12%	1,681	0.03%	
DY	NORWEGIAN AIR SHUTTLE ASA	4,644	0.08%	5,905	0.13%	-21.35%
N4	NORD WIND	4,500	0.08%			
AY	FINNAIR	4,153	0.07%	4,176	0.09%	-0.55%
OB	BLUE AIR AVIATION	3,606	0.06%	11,669	0.27%	-69.09%
CX	CATHAY PACIFIC AIRWAYS	3,494	0.06%	19,115	0.44%	-81.72%
7W	WIND ROSE AVIATION Co. Lt	3,201	0.05%	114		
PQ	SKYUP AIRLINES	2,952	0.05%	10,427	0.24%	-71.68%
CY	CYPRUS AIRWAYS	2,790	0.05%	9,192	0.21%	-69.64%
GF	GULF AIR - BAHREIN	2,640	0.04%	59		
VY	VUELING AIRLINES S.A.	2,298	0.04%	14,964	0.35%	-84.64%





Int'l Accumulated Passenger Traffic

Distribution by Airline

		Accumulated 2021		Accumulated 2020		
Airline		Passengers	Rate of Total	Passengers	Rate of Total	Rate of Change
NO	NEOS	2,295	0.04%			
ENT	ENTER AIR	2,130	0.03%	2,161	0.05%	-1.43%
ZT	TITAN AIRWAYS Ltd.	1,923	0.03%	29		
RJ	ROYAL JORDANIAN	1,448	0.02%	27,392	0.64%	-94.71%
MS	EGYPTAIR AIRLINES	1,319	0.02%			
7B	BEES AIRLINE	1,087	0.02%			
5W	WIZZ AIR ABU DHABI	1,041	0.01%			
PLM	WAMOS AIR	675	0.01%			
VN	VIETNAM AIRLINES	544	0.01%	600	0.01%	-9.33%
JAV	JORDANIAN AVIATION	496		2,636	0.06%	-81.18%
HU	HAINAN AIRLINES	440		7,966	0.18%	-94.47%
FV	ROSSIYA AIRLINES	359		13,968	0.32%	-97.42%
D8	NORWEGIAN AIR SHUTTLE	339		15,916	0.37%	-97.87%
CEF	CZECH A/F	316		24		
ASY	ROYAL AUSTRALIAN AIR FORCE	293				
KLJ	KLASJET	264		106		149.05%
PVG	PRIVILEG STYLE	245		511	0.01%	-52.05%
TB	JET AIRFLY	200				
KM	AIR MALTA	146		4,609	0.10%	-96.83%
B0	DREAMJET	128				
UL	SRILANKA AIRLINES	119		168		-29.16%





Int'l Accumulated Passenger Traffic

Distribution by Airline

		Accumulated 2021		Accumulated 2020		
Airline		Passengers	Rate of Total	Passengers	Rate of Total	Rate of Change
X5	AIR EUROPA EXPRESS	109				
EW	EUROWINGS	106				
	OTHERS	25,739	0.47%	179,260	4.21%	-85.64%
	TOTAL	5,427,946		4,250,828		27.69%





International Passenger Traffic

Distribution by Israeli Airlines for November

		November 2021		November 2020		
Airlines		Passengers	Rate of Total	Passengers	Rate of Total	Rate of Change
LY	EL AL ISRAEL AIRLINES	193,278	20.77%	25,768	17.50%	
6H	ISRAIR AIRLINES	52,383	5.63%	6,651	4.51%	
IZ	ARKIA ISRAELI AIRLINES	28,104	3.02%	5,162	3.50%	
	OTHERS	245	0.02%	356	0.24%	-31.17%
TOTAL		274,010	29.45%	37,937	25.77%	

Int'l Accumulated Passenger Traffic

Distribution by Israeli Airlines

		Accumulated 2021		Accumulated 2020		
Airlines		Passengers	Rate of Total	Passengers	Rate of Total	Rate of Change
LY	EL AL ISRAEL AIRLINES	1,264,372	23.29%	862,615	20.29%	46.57%
6H	ISRAIR AIRLINES	310,149	5.71%	168,478	3.96%	84.08%
IZ	ARKIA ISRAELI AIRLINES	206,747	3.80%	44,459	1.04%	
	OTHERS	5,387	0.09%	3,093	0.07%	74.16%
TOTAL		1,786,655	32.91%	1,078,645	25.37%	65.63%





International Passenger Traffic

Distribution by Countries for November

Countries	November 2021		November 2020		
	Passengers	Rate of Total	Passengers	Total of Rate	Rate of Change
TURKEY	126,057	13.55%	43,306	29.42%	191.08%
UNITED STATES	113,468	12.19%	25,933	17.62%	
FRANCE	69,185	7.43%	8,344	5.66%	
ITALY	64,990	6.98%	689	0.46%	
UNITED ARAB EMIRATES	61,551	6.61%	4,251	2.88%	
UNITED KINGDOM	54,741	5.88%	4,464	3.03%	
GERMANY	51,291	5.51%	6,118	4.15%	
HUNGARY	39,337	4.22%	236	0.16%	
GREECE	32,828	3.52%	13,238	8.99%	147.98%
SPAIN	28,991	3.11%	448	0.30%	
CYPRUS	26,900	2.89%	643	0.43%	
UKRAINE	26,629	2.86%	10,511	7.14%	153.34%
GEORGIA	26,312	2.82%	240	0.16%	
CZECH REPUBLIC	25,516	2.74%	55	0.03%	
NETHERLANDS	24,837	2.66%	720	0.48%	
AUSTRIA	24,210	2.60%	1,281	0.87%	
POLAND	19,734	2.12%	2		
SWITZERLAND	16,875	1.81%	1,012	0.68%	
RUSSIAN FEDERATION	13,134	1.41%	3,219	2.18%	
ROMANIA	11,416	1.22%	48	0.03%	
BELGIUM	9,821	1.05%	14		
BULGARIA	7,774	0.83%	1,040	0.70%	





International Passenger Traffic

Distribution by Countries for November

Countries	November 2021		November 2020		
	Passengers	Rate of Total	Passengers	Total of Rate	Rate of Change
MOROCCO	7,487	0.80%			
CANADA	7,083	0.76%	1,532	1.04%	
PORTUGAL	6,498	0.69%	5		
ETHIOPIA	5,016	0.53%	2,752	1.86%	82.26%
THAILAND	4,872	0.52%	775	0.52%	
LITHUANIA	2,867	0.30%	46	0.03%	
INDIA	2,292	0.24%	442	0.30%	
MOLDOVA	2,287	0.24%	947	0.64%	141.49%
MALTA	2,191	0.23%	60	0.04%	
AZERBAIJAN	1,915	0.20%	16	0.01%	
BELARUS	1,761	0.18%	838	0.56%	110.14%
BAHRAIN	1,666	0.17%	95	0.06%	
SEYCHELLES	1,626	0.17%	4,189	2.84%	-61.18%
CHINA	1,613	0.17%	1,057	0.71%	52.60%
UZBEKISTAN	1,568	0.16%			
LATVIA	877	0.09%	9		
MONTENEGRO	875	0.09%			
EGYPT	771	0.08%	243	0.16%	
JORDAN	296	0.03%	105	0.07%	181.90%
TANZANIA	157	0.01%			
SWEDEN	122	0.01%			
ESTONIA	114	0.01%			





International Passenger Traffic

Distribution by Countries for November

Countries	November 2021		November 2020		
	Passengers	Rate of Total	Passengers	Total of Rate	Rate of Change
OTHERS	695	0.07%	8,243	5.60%	-91.56%
TOTAL	930,246		147,166		





Int'l Accumulated Passenger Traffic

Distribution by Countries

Countries	Accumulated 2021		Accumulated 2020		
	Passengers	Rate of Total	Passengers	Rate of Total	Rate of Change
UNITED STATES	898,178	16.54%	501,310	11.79%	79.16%
TURKEY	563,682	10.38%	487,479	11.46%	15.63%
GREECE	493,888	9.09%	191,992	4.51%	157.24%
FRANCE	346,695	6.38%	297,186	6.99%	16.65%
GERMANY	288,837	5.32%	283,331	6.66%	1.94%
UKRAINE	251,110	4.62%	148,405	3.49%	69.20%
UNITED KINGDOM	247,527	4.56%	275,543	6.48%	-10.16%
UNITED ARAB EMIRATES	210,173	3.87%	5,265	0.12%	
ITALY	202,779	3.73%	182,911	4.30%	10.86%
GEORGIA	201,130	3.70%	61,308	1.44%	
AUSTRIA	183,345	3.37%	117,735	2.76%	55.72%
CYPRUS	178,664	3.29%	79,128	1.86%	125.79%
HUNGARY	139,372	2.56%	99,337	2.33%	40.30%
SWITZERLAND	120,972	2.22%	118,431	2.78%	2.14%
NETHERLANDS	114,371	2.10%	106,727	2.51%	7.16%
ROMANIA	112,674	2.07%	119,630	2.81%	-5.81%
CZECH REPUBLIC	107,933	1.98%	47,114	1.10%	129.08%
SPAIN	94,239	1.73%	152,547	3.58%	-38.22%
BULGARIA	93,597	1.72%	111,662	2.62%	-16.17%
RUSSIAN FEDERATION	93,236	1.71%	202,763	4.76%	-54.01%
POLAND	77,287	1.42%	130,402	3.06%	-40.73%
CANADA	54,448	1.00%	53,738	1.26%	1.32%





Int'l Accumulated Passenger Traffic

Distribution by Countries

Countries	Accumulated 2021		Accumulated 2020		
	Passengers	Rate of Total	Passengers	Rate of Total	Rate of Change
ETHIOPIA	43,295	0.79%	38,270	0.90%	13.13%
BELGIUM	40,227	0.74%	46,599	1.09%	-13.67%
MOLDOVA	34,694	0.63%	16,022	0.37%	116.53%
MONTENEGRO	25,921	0.47%	99		
BELARUS	25,396	0.46%	25,351	0.59%	0.17%
THAILAND	22,300	0.41%	43,197	1.01%	-48.37%
SEYCHELLES	19,681	0.36%	8,168	0.19%	140.95%
PORTUGAL	18,412	0.33%	19,650	0.46%	-6.30%
MOROCCO	13,924	0.25%	2		
AZERBAIJAN	11,068	0.20%	9,033	0.21%	22.52%
LITHUANIA	10,854	0.19%	15,051	0.35%	-27.88%
SERBIA	10,291	0.18%	27,767	0.65%	-62.93%
CHINA	9,916	0.18%	42,910	1.00%	-76.89%
INDIA	9,692	0.17%	41,663	0.98%	-76.73%
UZBEKISTAN	7,789	0.14%	7,177	0.16%	8.52%
LATVIA	6,681	0.12%	1,828	0.04%	
TANZANIA	5,060	0.09%	3,606	0.08%	40.32%
DENMARK	4,761	0.08%	7,313	0.17%	-34.89%
FINLAND	4,297	0.07%	11,342	0.26%	-62.11%
JORDAN	3,376	0.06%	31,375	0.73%	-89.23%
ICELAND	3,318	0.06%	33		
SLOVAKIA	3,101	0.05%	763	0.01%	





Int'l Accumulated Passenger Traffic

Distribution by Countries

Countries	Accumulated 2021		Accumulated 2020		
	Passengers	Rate of Total	Passengers	Rate of Total	Rate of Change
BAHRAIN	3,067	0.05%	282		
ALBANIA	2,985	0.05%	184		
EGYPT	2,716	0.05%	10,767	0.25%	-74.77%
SLOVENIA	2,334	0.04%	29		
MALTA	2,320	0.04%	4,757	0.11%	-51.22%
SWEDEN	704	0.01%	5,915	0.13%	-88.09%
CROATIA	627	0.01%	6,501	0.15%	-90.35%
KAZAKHSTAN	592	0.01%	266		122.55%
MEXICO	572	0.01%	273		109.52%
VIETNAM	544	0.01%	260		109.23%
MALDIVES	259				
CAMBODIA	243		416		-41.58%
IRELAND	240		315		-23.80%
EQUATORIAL GUINEA	235				
PANAMA	200		177		12.99%
GHANA	197		45		
FAROEISLANDS	184				
BRAZIL	134		15,433	0.36%	-99.13%
ESTONIA	123		1		
SOUTH AFRICA	110		12,876	0.30%	-99.14%
GIBRALTAR	105		17		
OTHERS	1,264	0.02%	21,151	0.49%	-94.02%





Int'l Accumulated Passenger Traffic

Distribution by Countries

Countries	Accumulated 2021		Accumulated 2020		Rate of Change
	Passengers	Rate of Total	Passengers	Rate of Total	
TOTAL	5,427,946		4,250,828		27.69%





International Passenger Traffic

Distribution by First Destination for November

Destination	November 2021		November 2020		
	Passengers	Rate of Total	Passengers	Rate of Total	Rate of Change
DUBAI	58,525	6.29%	3,227	2.19%	
ISTANBUL-SABIHA GOKCHEN	57,297	6.15%	26,363	17.91%	117.33%
ISTANBUL	52,964	5.69%	13,016	8.84%	
NEW YORK - J.F.KENNEDY	44,470	4.78%	9,184	6.24%	
PARIS-CHARLES DE GAULLE	43,480	4.67%	6,807	4.62%	
LONDON - HEATHROW	39,484	4.24%	3,887	2.64%	
NEW YORK - NEWARK	38,980	4.19%	10,555	7.17%	
BUDAPEST	38,718	4.16%	236	0.16%	
ROME - FIUMICINO	31,953	3.43%	302	0.20%	
ATHENS	29,007	3.11%	10,384	7.05%	179.34%
PRAGUE-RUZYNE	25,423	2.73%	55	0.03%	
AMSTERDAM	24,829	2.66%	718	0.48%	
VIENNA	23,999	2.57%	1,281	0.87%	
KIEV KYIV-BORISPOL	23,306	2.50%	9,137	6.20%	155.07%
BERLIN BRANDENBURG INTL	21,706	2.33%	174	0.11%	
FRANKFURT	19,503	2.09%	5,721	3.88%	
MADRID	17,390	1.86%	37	0.02%	
PAPHOS	16,478	1.77%	383	0.26%	
PARIS-ORLY	16,405	1.76%	1,534	1.04%	
BATUMI	16,049	1.72%			
ANTALYA	15,766	1.69%	3,894	2.64%	
ZURICH	13,154	1.41%	995	0.67%	





International Passenger Traffic

Distribution by First Destination for November

Destination	November 2021		November 2020		
	Passengers	Rate of Total	Passengers	Rate of Total	Rate of Change
MILAN-MALPENSA	12,945	1.39%	130	0.08%	
LUTON	12,270	1.31%	511	0.34%	
MIAMI INTERNATIONAL	11,960	1.28%	774	0.52%	
BARCELONA	11,421	1.22%	1		
BUCHAREST - OTOPENI	11,157	1.19%	45	0.03%	
LARNACA	10,422	1.12%	260	0.17%	
TBILISI	10,263	1.10%	240	0.16%	
WARSAW	10,082	1.08%	2		
BERGAMO	9,179	0.98%	244	0.16%	
MOSCOW	7,979	0.85%	2,676	1.81%	198.16%
MUNICH	7,669	0.82%			
LOS ANGELES	7,234	0.77%	638	0.43%	
TORONTO	7,072	0.76%	1,532	1.04%	
KRAKOW	6,860	0.73%			
LISBON	6,444	0.69%			
SAN FRANCISCO	5,918	0.63%	2,064	1.40%	186.72%
SOFIA	5,909	0.63%	1,035	0.70%	
MARRAKESH	5,537	0.59%			
BRUSSELS	5,174	0.55%			
NAPLES-CAPODICHINO	5,088	0.54%			
ADDIS ABABA	5,016	0.53%	2,752	1.86%	82.26%
CHICAGO - O'HARE	4,635	0.49%	1,392	0.94%	





International Passenger Traffic

Distribution by First Destination for November

Destination	November 2021		November 2020		
	Passengers	Rate of Total	Passengers	Rate of Total	Rate of Change
BRUSSELS - CHARLEROI	4,618	0.49%			
MOSCOW-DOMODEDOVO	3,876	0.41%	499	0.33%	
THESSALONIKI	3,808	0.40%	1,005	0.68%	
LYON - SATOLAS	3,738	0.40%			
MARSEILLE	2,993	0.32%			
VILNIUS INTL	2,867	0.30%	46	0.03%	
MANCHESTER	2,799	0.30%	6		
ABU DHABI	2,768	0.29%	14		
BANGKOK INTL.-SUARNABHUM	2,587	0.27%	775	0.52%	
CHISINAU	2,287	0.24%	947	0.64%	141.49%
PHUKET	2,285	0.24%			
BADEN BADEN	2,195	0.23%			
MALTA	2,191	0.23%	60	0.04%	
BOLOGNA-BORGIO PANIGALE	2,163	0.23%			
DELHI	2,035	0.21%	442	0.30%	
BARI -PALESE MACCHIE	2,015	0.21%			
BAKU HEYDAR ALIYEV INT`L	1,915	0.20%	16	0.01%	
BASEL	1,878	0.20%	5		
POZNAN	1,868	0.20%			
VARNA	1,865	0.20%			
CASABLANCA-MOHAMMED V	1,856	0.19%			
GENEVA	1,837	0.19%	5		





International Passenger Traffic

Distribution by First Destination for November

Destination	November 2021		November 2020		
	Passengers	Rate of Total	Passengers	Rate of Total	Rate of Change
ODESA	1,805	0.19%	923	0.62%	95.55%
MINSK	1,761	0.18%	838	0.56%	110.14%
BAHRAIN	1,666	0.17%	95	0.06%	
MAHE SEYCHELLES INTL	1,626	0.17%	4,189	2.84%	-61.18%
TASHKENT	1,568	0.16%			
NICE	1,482	0.15%	3		
ST. PETERSBURG	1,104	0.11%			
HONG KONG INT'L	1,103	0.11%	380	0.25%	190.26%
WARSAW- MODLIN	924	0.09%			
RIGA	877	0.09%	9		
TIVAT	875	0.09%			
KHARKOV	871	0.09%	75	0.05%	
TREVISO	837	0.08%			
CAIRO INTERNATIONAL	756	0.08%	21	0.01%	
TURIN	715	0.07%			
DNEPROPETROVSK	635	0.06%	314	0.21%	102.22%
DEBRECEN	619	0.06%			
SHANGHAI PUDONG	505	0.05%	420	0.28%	20.23%
GRENOBLE-SAUNT GEOIRS	374	0.04%			
NANTES	340	0.03%			
BORDEAUX	296	0.03%			
GOA	257	0.02%			





International Passenger Traffic

Distribution by First Destination for November

Destination	November 2021		November 2020		
	Passengers	Rate of Total	Passengers	Rate of Total	Rate of Change
AMMAN (QUEEN ALIA INT'L)	227	0.02%	66	0.04%	
HOUSTON INTERCONTINENTAL	221	0.02%	139	0.09%	58.99%
BERLIN -SCHOENEFELD	204	0.02%	7		
VITORIA	162	0.01%			
CLUJ NAPOCA	159	0.01%			
ZANZIBAR	157	0.01%			
DUBAI AL MAKTOUM INT AP	136	0.01%	812	0.55%	-83.25%
STOCKHOLM-ARLANDA	114	0.01%			
TALLINN-ULEMISTE	114	0.01%			
EDINBURGH	112	0.01%	45	0.03%	148.88%
AL BATEEN EXECUTIVE AP	112	0.01%	192	0.13%	-41.66%
KRASNODAR	101	0.01%			
OTHERS	1,867	0.20%	12,632	8.58%	-85.22%
TOTAL	930,246		147,166		





Int'l Accumulated Passenger Traffic

Distribution by First Destination

Destination	Accumulated 2021		Accumulated 2020		Rate of Change
	Passengers	Rate of Total	Passengers	Rate of Total	
NEW YORK - J.F.KENNEDY	366,497	6.75%	141,565	3.33%	158.88%
NEW YORK - NEWARK	304,258	5.60%	229,162	5.39%	32.76%
PARIS-CHARLES DE GAULLE	255,774	4.71%	176,719	4.15%	44.73%
ISTANBUL	241,360	4.44%	251,801	5.92%	-4.14%
ISTANBUL-SABIHA GOKCHEN	217,369	4.00%	182,076	4.28%	19.38%
KIEV KYIV-BORISPOL	211,664	3.89%	110,835	2.60%	90.97%
DUBAI	198,057	3.64%	3,281	0.07%	
LONDON - HEATHROW	195,654	3.60%	153,333	3.60%	27.60%
ATHENS	187,225	3.44%	136,844	3.21%	36.81%
VIENNA	181,902	3.35%	114,817	2.70%	58.42%
FRANKFURT	153,401	2.82%	114,670	2.69%	33.77%
BUDAPEST	137,676	2.53%	93,133	2.19%	47.82%
BATUMI	116,070	2.13%	17,352	0.40%	
AMSTERDAM	114,237	2.10%	99,418	2.33%	14.90%
PRAGUE-RUZYNE	107,617	1.98%	47,037	1.10%	128.79%
BUCHAREST - OTOPENI	101,468	1.86%	99,566	2.34%	1.91%
ANTALYA	94,027	1.73%	51,765	1.21%	81.64%
LARNACA	93,409	1.72%	42,932	1.00%	117.57%
ZURICH	91,090	1.67%	75,911	1.78%	19.99%
ROME - FIUMICINO	90,321	1.66%	104,739	2.46%	-13.76%
RHODES-PARADISI	86,556	1.59%	16,872	0.39%	
HERAKLION	85,732	1.57%	13,451	0.31%	





Int'l Accumulated Passenger Traffic

Distribution by First Destination

Destination	Accumulated 2021		Accumulated 2020		
	Passengers	Rate of Total	Passengers	Rate of Total	Rate of Change
PAPHOS	85,255	1.57%	36,166	0.85%	135.73%
TBILISI	85,056	1.56%	43,956	1.03%	93.50%
MIAMI INTERNATIONAL	77,222	1.42%	20,147	0.47%	
BERLIN BRANDENBURG INTL	71,208	1.31%	361		
SAN FRANCISCO	63,857	1.17%	55,249	1.29%	15.58%
MADRID	59,903	1.10%	99,036	2.32%	-39.51%
LOS ANGELES	54,281	1.00%	16,548	0.38%	
SOFIA	52,164	0.96%	83,345	1.96%	-37.41%
WARSAW	51,890	0.95%	65,476	1.54%	-20.74%
PARIS-ORLY	50,943	0.93%	63,408	1.49%	-19.65%
MOSCOW	50,337	0.92%	122,181	2.87%	-58.80%
MILAN-MALPENSA	49,137	0.90%	39,738	0.93%	23.65%
TORONTO	47,529	0.87%	53,617	1.26%	-11.35%
ADDIS ABABA	43,295	0.79%	38,270	0.90%	13.13%
MUNICH	41,651	0.76%	55,610	1.30%	-25.10%
LUTON	39,971	0.73%	92,085	2.16%	-56.59%
THESSALONIKI	38,704	0.71%	22,393	0.52%	72.83%
MOSCOW-DOMODEDOVO	37,242	0.68%	16,943	0.39%	119.80%
BRUSSELS	35,192	0.64%	32,792	0.77%	7.31%
CHISINAU	34,694	0.63%	16,022	0.37%	116.53%
BARCELONA	33,685	0.62%	50,667	1.19%	-33.51%
BERGAMO	31,282	0.57%	13,641	0.32%	129.32%





Int'l Accumulated Passenger Traffic

Distribution by First Destination

Destination	Accumulated 2021		Accumulated 2020		Rate of Change
	Passengers	Rate of Total	Passengers	Rate of Total	
CHICAGO - O'HARE	29,848	0.54%	4,543	0.10%	
CORFU	26,276	0.48%	1,180	0.02%	
TIVAT	25,649	0.47%	66		
MINSK	25,396	0.46%	25,265	0.59%	0.51%
ODESA	21,651	0.39%	16,874	0.39%	28.30%
VARNA	21,560	0.39%	20,062	0.47%	7.46%
KRAKOW	21,290	0.39%	29,790	0.70%	-28.53%
MIKONOS	20,548	0.37%	509	0.01%	
BURGAS	19,769	0.36%	6,234	0.14%	
MAHE SEYCHELLES INTL	19,681	0.36%	8,168	0.19%	140.95%
KHANIA-SOUDABAY	18,747	0.34%	18		
GENEVA	18,392	0.33%	31,180	0.73%	-41.01%
LISBON	18,266	0.33%	19,597	0.46%	-6.79%
SANTORINI	14,891	0.27%	49		
NICE	14,502	0.26%	6,937	0.16%	109.05%
BADEN BADEN	12,808	0.23%	6,967	0.16%	83.83%
PHUKET	11,942	0.22%			
MARSEILLE	11,849	0.21%	15,410	0.36%	-23.10%
TREVISO	11,599	0.21%			
LYON - SATOLAS	11,394	0.20%	14,415	0.33%	-20.95%
BASEL	11,247	0.20%	11,266	0.26%	-0.16%
BAKU HEYDAR ALIYEV INT'L	11,000	0.20%	9,029	0.21%	21.82%





Int'l Accumulated Passenger Traffic

Distribution by First Destination

Destination	Accumulated 2021		Accumulated 2020		Rate of Change
	Passengers	Rate of Total	Passengers	Rate of Total	
MARRAKESH	10,953	0.20%			
VILNIUS INTL	10,774	0.19%	14,412	0.33%	-25.24%
MANCHESTER	10,690	0.19%	13,260	0.31%	-19.38%
ABU DHABI	10,456	0.19%	379		
BANGKOK INTL.-SUARNABHUM	10,358	0.19%	42,878	1.00%	-75.84%
BELGRADE	10,291	0.18%	27,767	0.65%	-62.93%
DALAMAN	9,582	0.17%	1,547	0.03%	
ZAKYNTHOS	9,521	0.17%	4		
MEMMINGEN	8,936	0.16%	6,723	0.15%	32.91%
KHARKOV	8,764	0.16%	5,882	0.13%	48.99%
DELHI	8,643	0.15%	22,217	0.52%	-61.09%
NAPLES-CAPODICHINO	8,560	0.15%	5,359	0.12%	59.73%
TASHKENT	7,789	0.14%	7,164	0.16%	8.72%
CLUJ NAPOCA	7,371	0.13%	5,612	0.13%	31.34%
LVOV	6,990	0.12%	5,007	0.11%	39.60%
MONTREAL - DORVAL	6,867	0.12%	5		
RIGA	6,681	0.12%	1,828	0.04%	
SHANGHAI PUDONG	5,441	0.10%	688	0.01%	
ST. PETERSBURG	4,844	0.08%	19,055	0.44%	-74.57%
BRUSSELS - CHARLEROI	4,618	0.08%	13,402	0.31%	-65.54%
COPENHAGEN KASTRUP	4,530	0.08%	7,307	0.17%	-38.00%
HELSINKI	4,297	0.07%	4,176	0.09%	2.89%





Int'l Accumulated Passenger Traffic

Distribution by First Destination

Destination	Accumulated 2021		Accumulated 2020		Rate of Change
	Passengers	Rate of Total	Passengers	Rate of Total	
HONG KONG INT'L	4,030	0.07%	28,782	0.67%	-85.99%
ZANZIBAR	3,971	0.07%	3,321	0.07%	19.57%
PREVEZA	3,867	0.07%	106		
IASI	3,706	0.06%	6,477	0.15%	-42.78%
REYKJAVIK	3,309	0.06%	33		
BARI -PALESE MACCHIE	3,130	0.05%	22		
BAHRAIN	3,067	0.05%	282		
TIRANA	2,985	0.05%	184		
BRATISLAVA	2,904	0.05%	273		
AMMAN (QUEEN ALIA INT'L)	2,860	0.05%	30,948	0.72%	-90.75%
CASABLANCA-MOHAMMED V	2,791	0.05%	2		
CATANIA FONTANAROSSA	2,674	0.04%	32		
LJUBLJANA	2,334	0.04%	29		
MALTA	2,320	0.04%	4,757	0.11%	-51.22%
BOLOGNA-BORGO PANIGALE	2,247	0.04%	5,332	0.12%	-57.85%
VILLAFRANCA-VERONA	2,145	0.03%	275		
POZNAN	1,959	0.03%	6,109	0.14%	-67.93%
CAIRO INTERNATIONAL	1,958	0.03%	8,281	0.19%	-76.35%
DEBRECEN	1,696	0.03%	6,204	0.14%	-72.66%
HOUSTON INTERCONTINENTAL	1,496	0.02%	887	0.02%	68.65%
KIEV-ZHULYANY	1,245	0.02%	26		
SALZBURG	1,120	0.02%	2,904	0.06%	-61.43%





Int'l Accumulated Passenger Traffic

Distribution by First Destination

Destination	Accumulated 2021		Accumulated 2020		
	Passengers	Rate of Total	Passengers	Rate of Total	Rate of Change
KILIMANJARO	1,051	0.01%	285		
WARSAW- MODLIN	1,037	0.01%	12,084	0.28%	-91.41%
KOS	929	0.01%	51		
AL BATEEN EXECUTIVE AP	840	0.01%	270		
DUBAI AL MAKTOUM INT AP	787	0.01%	1,329	0.03%	-40.78%
TURIN	740	0.01%	5		
BODRUM	699	0.01%	117		
DNEPROPETROVSK	696	0.01%	5,612	0.13%	-87.59%
NANTES	675	0.01%	2,990	0.07%	-77.42%
STOCKHOLM-ARLANDA	675	0.01%	5,909	0.13%	-88.57%
BORDEAUX	595	0.01%	4,944	0.11%	-87.96%
SHARM EL SHEIKH	563	0.01%	612	0.01%	-8.00%
CANCUN- MEXICO	532				
BERLIN -SCHOENEFELD	524		47,120	1.10%	-98.88%
MOSCOW-VNUKOVO	519		610	0.01%	-14.91%
RZESZOW-JASIONKA	508		1,118	0.02%	-54.56%
MUMBAI	473		12,900	0.30%	-96.33%
ALMATY	440		259		69.88%
ANKARA-ESENBUGA	434		49		
LIEGE	413		397		4.03%
KATOWICE	391		10,523	0.24%	-96.28%
GRENOBLE-SAUNT GEOIRS	374		7,060	0.16%	-94.70%





Int'l Accumulated Passenger Traffic

Distribution by First Destination

Destination	Accumulated 2021		Accumulated 2020		
	Passengers	Rate of Total	Passengers	Rate of Total	Rate of Change
SKIATHOS	328		13		
BANGALORE	319				
KBELY(MIL)	316		24		
LONDON -STANSTED	292		7,192	0.16%	-95.93%
EDINBURGH	274		45		
NOI BAI HANOI INT	273		260		5.00%
PODGORICA	272		33		
VAN DON INTERNATIONAL AIR	271				
MALE INT'L	259				
GOA	257		3,422	0.08%	-92.48%
BEIJING	254		8,843	0.20%	-97.12%
ZAGREB	249		3,200	0.07%	-92.21%
PHNOM PENH INTERNATIONAL	243		416		-41.58%
ANDREWS	232		384		-39.58%
BILLUND	230		4		
SHANNON	228		249		-8.43%
LONDON - GATWICK	212		9,074	0.21%	-97.66%
WROCLAW	212		3,538	0.08%	-94.00%
BATA AIRPORT	210				
KLAGENFURT	206		3		
PANAMA CITY	200		177		12.99%
ACCRA-KOTOKA	197		45		





Int'l Accumulated Passenger Traffic

Distribution by First Destination

Destination	Accumulated 2021		Accumulated 2020		Rate of Change
	Passengers	Rate of Total	Passengers	Rate of Total	
CHENGDU	191		2,662	0.06%	-92.82%
VITORIA	186		44		
VAGAR AIRPORT	184				
IZMIR-ADNAN MENDERES	161		8		
RABAT	154				
SAMOS	143		5		
ASTANA	137				
SAO PAULO (GUARULHOS INT')	134		15,433	0.36%	-99.13%
BUCHAREST- BANEASA	124		27		
TALLINN-ULEMISTE	123		1		
ROTTERDAM	122		23		
LILLE-LESQUINN	121				
KALAMATA	116		239		-51.46%
ZADAR	109		48		127.08%
DUSSELDORF	108		697	0.01%	-84.50%
HURGHADA	107				
JOHANNESBURG	106		12,876	0.30%	-99.17%
GIBRALTAR	105		17		
PLOVDIV	104		2,021	0.04%	-94.85%
KRASNODAR	103		2,357	0.05%	-95.63%
GLASGOW	102		306		-66.66%
OTHERS	6,840	0.12%	210,471	4.95%	-96.75%





Int'l Accumulated Passenger Traffic

Distribution by First Destination

Destination	Accumulated 2021		Accumulated 2020		
	Passengers	Rate of Total	Passengers	Rate of Total	Rate of Change
TOTAL	5,427,946		4,250,828		27.69%



Cargo Activity





Cargo Handling

Distribution by Transporter

Transporter	November 2021 (Ton)	November 2020 (Ton)	Rate of Change
Cargo on Passenger Aircrafts - Incoming	6,657	3,055	117.90%
Cargo on Passenger Aircrafts - Outgoing	5,960	3,283	81.54%
Total Cargo on Passenger Aircrafts	12,617	6,338	99.06%
Cargo on Cargo Aircrafts - Incoming	15,067	16,166	-6.79%
Cargo on Cargo Aircrafts - Outgoing	8,010	7,544	6.17%
Total Cargo on Cargo Aircrafts	23,077	23,710	-2.66%
Total	35,694	30,048	18.78%

Distribution by Months

Month	2021 (ton)			2020 (ton)			Rate of Change
	Cargo	Mail	Total	Cargo	Mail	Total	
January	28,571	632	29,203	28,568	1,395	29,964	-2.53%
February	26,508	322	26,830	28,188	1,033	29,221	-8.18%
March	31,396	546	31,942	26,511	535	27,047	18.09%
April	28,779	745	29,524	20,673	116	20,790	42.01%
May	29,512	544	30,056	26,974	112	27,086	10.96%
June	30,775	586	31,361	24,918	216	25,134	24.77%
July	30,404	682	31,086	23,733	331	24,065	29.17%
August	33,558	582	34,139	24,252	465	24,718	38.11%
September	28,160	602	28,763	23,039	526	23,566	22.05%
October	33,037	704	33,741	26,262	652	26,914	25.36%
November	34,971	723	35,694	29,383	665	30,048	18.78%
Total	335,671	6,668	342,339	282,501	6,046	288,553	18.63%





Cargo Handling on Passenger Aircrafts

Distribution by Airline for November

		November 2021				November 2020				
Airline	Incoming Cargo (Ton)	Outgoing Cargo (Ton)	Cargo (Ton)	Rate of Total	Incoming Cargo (Ton)	Outgoing Cargo (Ton)	Cargo (Ton)	Rate of Total	Rate of Change	
LY EL AL ISRAEL AIRLINES	1,651	1,799	3,449	27.33%	729	849	1,579	24.91%	118.42%	
UA UNITED AIRLINES	818	1,182	2,000	15.85%	951	1,269	2,220	35.02%	-9.90%	
TK TURKISH AIRLINES	779	109	888	7.03%	277	105	382	6.02%	132.46%	
AA AMERICAN AIRLINES	333	525	857	6.79%						
LX SWISS INT'L AIRLINES	509	303	812	6.43%	159	118	277	4.37%	193.14%	
AF AIR FRANCE	403	312	715	5.66%	8	11	19	0.29%		
VS VIRGIN ATLANTIC AIRWAYS	316	214	530	4.20%	122	44	166	2.61%		
BA BRITISH AIRWAYS PLC	190	220	409	3.24%	63	33	95	1.49%		
DL DELTA AIRLINES	203	187	390	3.09%	221	380	601	9.48%	-35.10%	
AC AIR CANADA	127	244	371	2.94%	79	168	247	3.89%	50.20%	
ET ETHIOPIAN AIRLINES	226	115	340	2.69%	168	126	294	4.63%	15.64%	
SU AEROFLOT RUSSIAN AIRLINES	105	168	272	2.15%	67	47	114	1.79%	138.59%	
UX AIR EUROPA Lineas Aereas	119	103	222	1.75%						
IB IBERIA	158	62	220	1.74%						
CX CATHAY PACIFIC AIRWAYS	138	66	204	1.61%	86	49	135	2.13%	51.11%	
EY ETIHAD AIRWAYS	78	81	159	1.26%						
FZ FLYDUBAI	132	6	138	1.09%	8	2	10	0.15%		
AI AIR INDIA	62	64	126	0.99%	17	5	22	0.34%		
PC PEGASUS AIRLINES	38	62	99	0.78%	17	36	53	0.83%	86.79%	
LH LUFTHANSA	37	26	63	0.49%	24	10	34	0.53%	85.29%	
PS UKRAINE INTL AIR	45	8	53	0.42%	24	8	33	0.52%	60.60%	
GF GULF AIR - BAHREIN	23	15	38	0.30%						





Cargo Handling on Passenger Aircrafts

Distribution by Airline for November

November 2021					November 2020				
Airline	Incoming Cargo (Ton)	Outgoing Cargo (Ton)	Cargo (Ton)	Rate of Total	Incoming Cargo (Ton)	Outgoing Cargo (Ton)	Cargo (Ton)	Rate of Total	Rate of Change
A3 AEGEAN AIRLINES	32	3	35	0.27%	6	1	7	0.11%	
QS SMARTWINGS	28	2	30	0.23%					
LO LOT POLISH AIRLINES	20	2	22	0.17%					
HY UZBEKISTAN AIR	5	17	22	0.17%					
OS AUSTRIAN AIRLINES	13	8	21	0.16%	2	1	3	0.04%	
KL K.L.M.	1	17	18	0.14%					
HM AIR SEYCHELLES	15		15	0.11%	9		9	0.14%	66.66%
RO TAROM - RUMANIAN AIR TRAN	10	4	15	0.11%					
U8 TUS AIRWAYS	13	1	13	0.10%					
BT AIR BALTIC	10	3	13	0.10%					
SN BRUSSELS AIRLINES	7	1	8	0.06%					
TP AIR PORTUGAL	4	4	8	0.06%					
AZ ITALYA TRASPORTO AEREO	1	6	8	0.06%					
B2 BELAVIA AIRLINE	3	5	8	0.06%	4	6	10	0.15%	-20.00%
6H ISRAIR AIRLINES	5	2	7	0.05%	10	1	12	0.18%	-41.66%
OTHERS	2	16	18	0.14%	4	11	15	0.23%	20.00%
TOTAL	6,657	5,960	12,617		3,055	3,283	6,338		99.06%





Accumulated Cargo Handling on Passengers Aircrafts

Distribution by Airline

		Accumulated 2021				Accumulated 2020				
Airline		Incoming Cargo (Ton)	Outgoing Cargo (Ton)	Cargo (Ton)	Rate of Total	Incoming Cargo (Ton)	Outgoing Cargo (Ton)	Cargo (Ton)	Rate of Total	Rate of Change
LY	EL AL ISRAEL AIRLINES	10,209	13,348	23,557	25.98%	8,010	7,563	15,573	23.28%	51.26%
UA	UNITED AIRLINES	6,297	10,139	16,436	18.13%	7,470	9,390	16,860	25.21%	-2.51%
TK	TURKISH AIRLINES	6,278	957	7,235	7.98%	3,906	1,171	5,077	7.59%	42.50%
DL	DELTA AIRLINES	3,052	3,233	6,285	6.93%	1,678	1,937	3,615	5.40%	73.85%
LX	SWISS INT'L AIRLINES	3,125	1,783	4,908	5.41%	2,609	1,637	4,246	6.34%	15.59%
AA	AMERICAN AIRLINES	1,700	2,846	4,546	5.01%					
AF	AIR FRANCE	2,615	1,429	4,044	4.46%	74	156	230	0.34%	
VS	VIRGIN ATLANTIC AIRWAYS	2,259	1,238	3,497	3.85%	1,031	670	1,702	2.54%	105.46%
ET	ETHIOPIAN AIRLINES	2,095	1,291	3,386	3.73%	833	545	1,378	2.06%	145.71%
AC	AIR CANADA	1,302	1,843	3,145	3.46%	1,521	1,891	3,412	5.10%	-7.82%
BA	BRITISH AIRWAYS PLC	1,395	1,443	2,838	3.13%	1,866	1,097	2,964	4.43%	-4.25%
IB	IBERIA	1,251	596	1,847	2.03%	709	218	927	1.38%	99.24%
EY	ETIHAD AIRWAYS	759	750	1,509	1.66%	9	9	18	0.02%	
SU	AEROFLOT RUSSIAN AIRLINES	527	980	1,507	1.66%	1,839	1,705	3,544	5.29%	-57.47%
CX	CATHAY PACIFIC AIRWAYS	706	317	1,023	1.12%	644	449	1,092	1.63%	-6.31%
PC	PEGASUS AIRLINES	618	405	1,022	1.12%	290	269	559	0.83%	82.82%
FZ	FLYDUBAI	553	75	628	0.69%	8	2	10	0.01%	
AI	AIR INDIA	314	304	618	0.68%	502	273	775	1.15%	-20.25%
UX	AIR EUROPA Lineas Aereas	228	191	419	0.46%					
PS	UKRAINE INTL AIR	323	81	404	0.44%	184	111	296	0.44%	36.48%
LH	LUFTHANSA	273	127	400	0.44%	278	201	479	0.71%	-16.49%
A3	AEGEAN AIRLINES	153	49	202	0.22%	63	80	143	0.21%	41.25%





Accumulated Cargo Handling on Passengers Aircrafts

Distribution by Airline

		Accumulated 2021				Accumulated 2020				
Airline		Incoming Cargo (Ton)	Outgoing Cargo (Ton)	Cargo (Ton)	Rate of Total	Incoming Cargo (Ton)	Outgoing Cargo (Ton)	Cargo (Ton)	Rate of Total	Rate of Change
OS	AUSTRIAN AIRLINES	78	46	124	0.13%	49	23	71	0.10%	74.64%
LO	LOT POLISH AIRLINES	110	12	122	0.13%	65	22	87	0.13%	40.22%
HM	AIR SEYCHELLES	105	1	106	0.11%	16	2	18	0.02%	
RO	TAROM - RUMANIAN AIR TRAN	69	28	97	0.10%	37	27	65	0.09%	49.23%
HY	UZBEKISTAN AIR	31	52	83	0.09%	71	68	139	0.20%	-40.28%
QS	SMARTWINGS	63	14	77	0.08%	65	34	98	0.14%	-21.42%
KL	K.L.M.	15	61	75	0.08%	9	11	20	0.02%	
B2	BELAVIA AIRLINE	35	40	74	0.08%	60	75	134	0.20%	-44.77%
6H	ISRAIR AIRLINES	32	37	69	0.07%	71	142	213	0.31%	-67.60%
BT	AIR BALTIC	42	13	55	0.06%	2	3	5		
GF	GULF AIR - BAHREIN	29	17	46	0.05%					
AZ	ITALYA TRASPORTO AEREO	9	36	45	0.04%	73	126	199	0.29%	-77.38%
SN	BRUSSELS AIRLINES	31	4	35	0.03%	71	18	88	0.13%	-60.22%
TP	AIR PORTUGAL	9	14	22	0.02%	30	7	37	0.05%	-40.54%
U8	TUS AIRWAYS	14	3	16	0.01%					
	OTHERS	53	84	137	0.15%	1,929	868	2,797	4.18%	-95.10%
	TOTAL	46,756	43,887	90,642		36,070	30,799	66,871		35.54%





Cargo Handling on Cargo Aircrafts

Distribution by Airlines November

		November 2021				November 2020				
Airline		Incoming Cargo (Ton)	Outgoing Cargo (Ton)	Cargo (Ton)	Rate of Total	Incoming Cargo (Ton)	Outgoing Cargo (Ton)	Cargo (Ton)	Rate of Total	Rate of Change
ICL	C.A.L ISRAELI CARGO	3,759	1,449	5,207	22.56%	2,828	1,439	4,268	18.00%	22.00%
LY	EL AL ISRAEL AIRLINES	2,396	1,347	3,743	16.21%	2,319	1,216	3,536	14.91%	5.85%
QY	EUROPEAN AIR TRANSPORT	1,456	944	2,399	10.39%	1,185	906	2,091	8.81%	14.72%
LH	LUFTHANSA	1,139	984	2,124	9.20%	511	331	842	3.55%	152.25%
TK	TURKISH AIRLINES	1,749	278	2,027	8.78%	2,039	419	2,458	10.36%	-17.53%
AZG	SILK WAY WEST AIRLINES	590	712	1,302	5.64%	587	624	1,211	5.10%	7.51%
FX	FEDERAL EXPRESS	555	433	988	4.28%	478	333	812	3.42%	21.67%
CX	CATHAY PACIFIC AIRWAYS	572	336	909	3.93%	251	146	398	1.67%	128.39%
MNB	MNG CARGO AIRLINES	658	83	741	3.21%	1,371	241	1,612	6.79%	-54.03%
AJT	AMERIJET INTERNATIONAL	368	367	735	3.18%					
5X	UPS AIRLINES	417	295	712	3.08%					
3V	ASL AIRLINES BELGIUM	279	190	469	2.03%	335	205	540	2.27%	-13.14%
EY	ETIHAD AIRWAYS	178	228	406	1.75%					
3U	SICHUAN AIRLINES	215	121	335	1.45%	874	132	1,005	4.23%	-66.66%
SU	AEROFLOT RUSSIAN AIRLINES	233	34	267	1.15%	159	114	274	1.15%	-2.55%
ET	ETHIOPIAN AIRLINES	118	79	198	0.85%					
M4	POSTE AIR CARGO	113	43	156	0.67%					
IB	IBERIA	90	30	120	0.51%	32	11	43	0.18%	179.06%
HU	HAINAN AIRLINES	56	43	99	0.42%	658	8	667	2.81%	-85.15%
VDA	VOLGA DNEPER	34		34	0.14%					
MJ	MYWAY AIRLINES	28		28	0.12%					
A9	GEORGIAN AIRWAYS	20		20	0.08%					





Cargo Handling on Cargo Aircrafts

Distribution by Airlines November

		November 2021				November 2020				
Airline	Incoming Cargo (Ton)	Outgoing Cargo (Ton)	Cargo (Ton)	Rate of Total	Incoming Cargo (Ton)	Outgoing Cargo (Ton)	Cargo (Ton)	Rate of Total	Rate of Change	
6H ISRAIR AIRLINES	17		17	0.07%	19	24	43	0.18%	-60.46%	
OTHERS	27	14	41	0.17%	2,518	1,394	3,912	16.49%	-98.95%	
TOTAL	15,067	8,010	23,077		16,166	7,544	23,710		-2.66%	





Accumulated Cargo Handling on Cargo Aircrafts

Distribution by Airline

		Accumulated 2021				Accumulated 2020				
Airline		Incoming Cargo (Ton)	Outgoing Cargo (Ton)	Cargo (Ton)	Rate of Total	Incoming Cargo (Ton)	Outgoing Cargo (Ton)	Cargo (Ton)	Rate of Total	Rate of Change
ICL	C.A.L ISRAELI CARGO	37,948	19,334	57,282	22.75%	18,469	10,738	29,207	13.17%	96.12%
LY	EL AL ISRAEL AIRLINES	27,863	16,668	44,530	17.69%	26,276	15,501	41,777	18.84%	6.58%
TK	TURKISH AIRLINES	24,259	5,285	29,544	11.73%	17,229	5,229	22,458	10.13%	31.55%
QY	EUROPEAN AIR TRANSPORT	13,082	9,027	22,109	8.78%	10,941	7,829	18,770	8.46%	17.78%
MN B	MNG CARGO AIRLINES	13,437	2,485	15,922	6.32%	11,130	2,812	13,942	6.28%	14.20%
AZG	SILK WAY WEST AIRLINES	7,065	8,135	15,200	6.03%	8,095	7,689	15,783	7.11%	-3.69%
LH	LUFTHANSA	6,898	5,537	12,435	4.94%	6,790	5,234	12,023	5.42%	3.42%
FX	FEDERAL EXPRESS	5,649	3,818	9,467	3.76%	4,915	3,560	8,475	3.82%	11.70%
CX	CATHAY PACIFIC AIRWAYS	4,177	2,655	6,832	2.71%	1,672	1,087	2,759	1.24%	147.62%
3V	ASL AIRLINES BELGIUM	2,934	1,831	4,766	1.89%	3,457	2,037	5,494	2.47%	-13.25%
HU	HAINAN AIRLINES	3,616	118	3,733	1.48%	1,889	41	1,931	0.87%	93.31%
EY	ETIHAD AIRWAYS	1,583	1,857	3,440	1.36%	8		8		
AJT	AMERIJET INTERNATIONAL	1,357	1,277	2,634	1.04%					
ET	ETHIOPIAN AIRLINES	1,578	734	2,312	0.91%	158	70	228	0.10%	
3U	SICHUAN AIRLINES	1,195	508	1,702	0.67%	3,743	828	4,571	2.06%	-62.76%
IB	IBERIA	1,015	385	1,400	0.55%	32	11	43	0.01%	
SU	AEROFLOT RUSSIAN AIRLINES	659	540	1,200	0.47%	874	661	1,534	0.69%	-21.77%
M4	POSTE AIR CARGO	592	226	818	0.32%	7		7		
5X	UPS AIRLINES	417	295	712	0.28%					
A9	GEORGIAN AIRWAYS	159		159	0.06%					
VDA	VOLGA DNEPER	65	68	133	0.05%					
6H	ISRAIR AIRLINES	70	12	81	0.03%	483	372	855	0.38%	-90.52%





Accumulated Cargo Handling on Cargo Aircrafts

Distribution by Airline

		Accumulated 2021				Accumulated 2020				
Airline		Incoming Cargo (Ton)	Outgoing Cargo (Ton)	Cargo (Ton)	Rate of Total	Incoming Cargo (Ton)	Outgoing Cargo (Ton)	Cargo (Ton)	Rate of Total	Rate of Change
MJ	MYWAY AIRLINES	28		28	0.01%					
	OTHERS	9,395	5,862	15,256	6.06%	24,419	17,396	41,815	18.86%	-63.51%
	TOTAL	165,039	86,656	251,697		140,587	81,094	221,682		13.53%





Cargo Handling on Cargo Aircrafts

Distribution by Countries for November

Country	November 2021				November 2020				
	Incoming Cargo (Ton)	Outgoing Cargo (Ton)	Cargo (Ton)	Rate of Total	Incoming Cargo (Ton)	Outgoing Cargo (Ton)	Cargo (Ton)	Rate of Total	Rate of Change
BELGIUM	3,764	2,765	6,530	28.29%	2,939	3,496	6,435	27.14%	1.47%
GERMANY	3,061	1,240	4,301	18.63%	1,897	994	2,891	12.19%	48.77%
CHINA	2,497	928	3,425	14.84%	3,660	580	4,241	17.88%	-19.24%
TURKEY	2,407	361	2,768	11.99%	3,481	695	4,177	17.61%	-33.73%
AZERBAIJAN	590	712	1,302	5.64%	587	624	1,211	5.10%	7.51%
NORWAY	1,059		1,059	4.58%	932		932	3.93%	13.62%
EGYPT		984	984	4.26%		331	331	1.39%	197.28%
UNITED ARAB EMIRATES	363	295	658	2.85%					
CYPRUS	338	112	450	1.94%	691	68	759	3.20%	-40.71%
FRANCE	79	225	304	1.31%	97	291	388	1.63%	-21.64%
RUSSIAN FEDERATION	233	34	267	1.15%	851	158	1,009	4.25%	-73.53%
ETHIOPIA	118	79	198	0.85%		4	4	0.01%	
INDIA	128	67	195	0.84%	75	27	101	0.42%	93.06%
ITALY	120	51	170	0.73%	5	6	11	0.04%	
AUSTRIA	130		130	0.56%	179		179	0.75%	-27.37%
SPAIN	90	30	120	0.51%	32	11	44	0.18%	172.72%
GEORGIA	48		48	0.20%					
FINLAND		44	44	0.19%					
UZBEKISTAN		28	28	0.12%					
GREECE	1	26	27	0.11%					
TANZANIA		23	23	0.09%					
THAILAND	21		21	0.09%					





Cargo Handling on Cargo Aircrafts

Distribution by Countries for November

Country	November 2021				November 2020				
	Incoming Cargo (Ton)	Outgoing Cargo (Ton)	Cargo (Ton)	Rate of Total	Incoming Cargo (Ton)	Outgoing Cargo (Ton)	Cargo (Ton)	Rate of Total	Rate of Change
MACEDONIA	17		17	0.07%					
OTHERS	4	5	9	0.03%	740	258	998	4.20%	-99.09%
TOTAL	15,067	8,010	23,077		16,166	7,544	23,710		-2.66%





Accumulated Cargo Handling on Cargo Aircrafts

Distribution by Countries

Countries	Accumulated 2021				Accumulated 2020				
	Incoming Cargo (Ton)	Outgoing Cargo (Ton)	Cargo (Ton)	Rate of Total	Incoming Cargo (Ton)	Outgoing Cargo (Ton)	Cargo (Ton)	Rate of Total	Rate of Change
BELGIUM	40,678	36,207	76,884	30.54%	34,249	35,805	70,054	31.60%	9.74%
TURKEY	32,661	7,942	40,603	16.13%	23,421	9,160	32,582	14.69%	24.61%
GERMANY	28,016	10,425	38,440	15.27%	26,417	13,314	39,730	17.92%	-3.24%
CHINA	27,210	6,961	34,170	13.57%	17,064	2,942	20,006	9.02%	70.79%
AZERBAIJAN	7,066	8,084	15,150	6.01%	8,053	7,763	15,816	7.13%	-4.21%
NORWAY	10,323	51	10,374	4.12%	10,073		10,073	4.54%	2.98%
UNITED ARAB EMIRATES	2,657	2,207	4,864	1.93%	24		24	0.01%	
EGYPT		4,576	4,576	1.81%	8	450	458	0.20%	
CYPRUS	3,714	836	4,550	1.80%	7,297	495	7,792	3.51%	-41.60%
FRANCE	1,083	2,344	3,427	1.36%	1,279	2,136	3,415	1.54%	0.35%
ETHIOPIA	1,578	734	2,312	0.91%	158	79	237	0.10%	
SPAIN	1,722	392	2,114	0.83%	1,373	450	1,824	0.82%	15.89%
RUSSIAN FEDERATION	1,177	596	1,774	0.70%	1,986	913	2,899	1.30%	-38.80%
INDIA	923	448	1,371	0.54%	392	204	596	0.26%	130.03%
ITALY	795	332	1,126	0.44%	387	119	506	0.22%	122.52%
AUSTRIA	543		543	0.21%	289	646	935	0.42%	-41.92%
GEORGIA	188	14	202	0.08%		8	8		
FINLAND		141	141	0.05%					
THAILAND	129		129	0.05%					
GREECE	57	63	120	0.04%	38	3	41	0.01%	192.68%
UZBEKISTAN		42	42	0.01%	232	14	246	0.11%	-82.92%
TANZANIA		23	23						





Accumulated Cargo Handling on Cargo Aircrafts

Distribution by Countries

Countries	Accumulated 2021				Accumulated 2020				
	Incoming Cargo (Ton)	Outgoing Cargo (Ton)	Cargo (Ton)	Rate of Total	Incoming Cargo (Ton)	Outgoing Cargo (Ton)	Cargo (Ton)	Rate of Total	Rate of Change
MACEDONIA	17		17		6		6		183.33%
OTHERS	4,504	4,240	8,744	3.47%	7,840	6,595	14,435	6.51%	-39.42%
TOTAL	165,039	86,656	251,697		140,587	81,094	221,682		13.53%



Domestic Activity

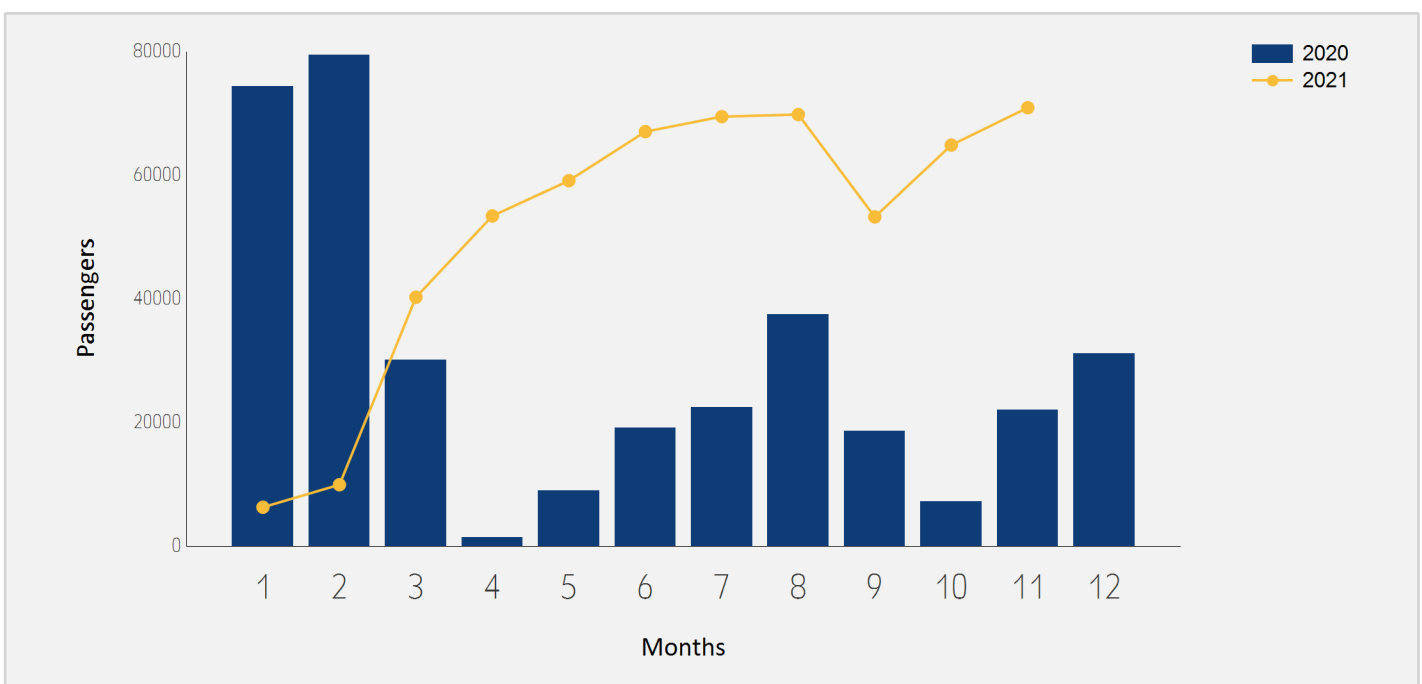




Domestic Passenger Traffic

Distribution by Months

Month	2021	2020	Rate of Change
January	6,294	74,380	-91.53%
February	9,936	79,475	-87.49%
March	40,263	30,137	33.59%
April	53,421	1,412	
May	59,126	8,989	
June	67,065	19,115	
July	69,490	22,417	
August	69,828	37,477	86.32%
September	53,261	18,645	185.65%
October	64,886	7,164	
November	70,938	22,021	
Total	564,508	321,232	75.73%

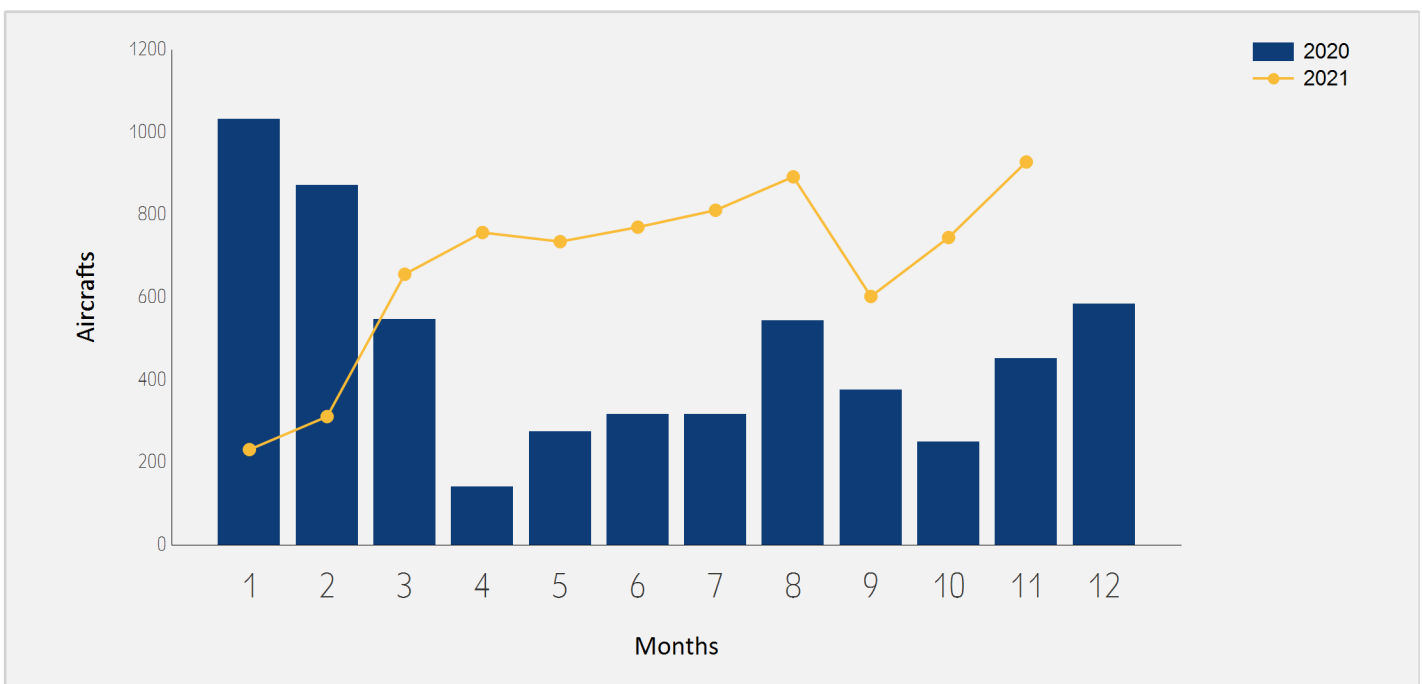




Domestic Aircrafts Traffic

Distribution by Months

Month	2021	2020	Rate of Change
January	231	1,032	-77.61%
February	311	871	-64.29%
March	656	547	19.92%
April	757	141	
May	735	274	168.24%
June	770	317	142.90%
July	811	316	156.64%
August	892	543	64.27%
September	602	376	60.10%
October	745	250	198.00%
November	928	451	105.76%
Total	7,438	5,118	45.33%





Domestic Passengers Traffic

Distribution by Airlines for November

		November 2021		November 2020		
Airline		Passengers	Rate of Total	Passengers	Rate of Total	Rate of Change
IZ	ARKIA ISRAELI AIRLINES	42,396	59.76%	7,139	32.41%	
6H	ISRAIR AIRLINES	28,492	40.16%	14,846	67.41%	91.91%
	OTHERS	50	0.07%	36	0.16%	38.88%
TOTAL		70,938		22,021		

Accumulated Domestic Passengers Traffic

Distribution by Airlines

		Accumulated 2021		Accumulated 2020		
Airline		Passengers	Rate of Total	Passengers	Rate of Total	Rate of Change
IZ	ARKIA ISRAELI AIRLINES	325,028	57.57%	149,896	46.66%	116.83%
6H	ISRAIR AIRLINES	238,529	42.25%	170,806	53.17%	39.64%
	OTHERS	951	0.16%	530	0.16%	79.43%
TOTAL		564,508		321,232		75.73%





Domestic Passenger Traffic

Distribution by Destinations for November

Destination	November 2021		November 2020		Rate of Change
	Passengers	Rate of Total	Passengers	Rate of Total	
RAMON	70,920	99.97%	21,987	99.84%	
OTHERS	18	0.02%	34	0.15%	-47.05%
TOTAL	70,938		22,021		

Accumulated Domestic Passenger Traffic

Distribution by Destinations

Destination	Accumulated 2021		Accumulated 2020		Rate of Change
	Passengers	Rate of Total	Passengers	Rate of Total	
RAMON	563,237	99.77%	319,748	99.53%	76.15%
OTHERS	1,271	0.22%	1,484	0.46%	-14.35%
TOTAL	564,508		321,232		75.73%

