



# Annual Report

## Ben Gurion International Airport

Year 2020



# Israel Airport Authority

## Ben Gurion International Airport

### Produced by the Industry & Management Department

**This report is protected by copyright and is the exclusive property of the Israel Airports Authority.**

**It must be emphasized that the data in the report are based on the reports of the airlines, and received under their responsibility.**

**The information is intended for personal use, and therefore may not be quoted or passed on to any third party without written permission from the Israel Airports Authority.**

**In addition, no commercial use may be made of this report.**

#### **Edit Yehoshua**

Activity Coordinator

Tel. +972-3-9752017

Email: [edity@iaa.gov.il](mailto:edity@iaa.gov.il)

#### **Rachel Lehava**

Manager, Industrial & Management Dep.

Tel. +972-3-9752019

Email: [rachelle@iaa.gov.il](mailto:rachelle@iaa.gov.il)

#### **Yossi Tzemach**

Head, Industrial & Management Dep.

Tel. +972-3-9752020

Email: [yossiz@iaa.gov.il](mailto:yossiz@iaa.gov.il)



Partners to our activity, dear customers, employees and managers at Ben-Gurion International Airport and at the Israel Aviation Authority,

In 2020 we experienced a worldwide crisis with the outbreak of the COVID-19 corona virus which had a detrimental impact on the aviation and tourism world.

Airlines, franchisees, activity partners and airports throughout the world were the first to be affected and will most likely be the last to return to full activity.

The volume of international passenger and airplane traffic decreased this year by about 81% compared to 2019 and amounted to 4.45 million passengers, with most of the traffic in January – March.

The processes at Ben-Gurion International Airport were affected by the regulatory restrictions, including formulation of the blue badge, which imposes social distancing restrictions as well as rules and restrictions on conduct and hygiene.

Movement to/from countries was restricted from time to time, as well restriction on entry into Israel and destination countries, prohibited entry of foreign citizens and more.

Processes were formulated for entry from green countries and entry from red countries, and quarantine requirements were imposed for those entering from certain countries.

Ben-Gurion International Airport organized through Omega to conduct PCR tests for incoming and outgoing passengers and adapted the processes at the service counters in line with updated restrictions.

Hope for accelerated recovery of passenger and airplane traffic will come from the nationwide vaccination campaign among the residents of Israel against the COVID-19 corona virus.

We hope that with the completion of the vaccination campaign it will be possible to fly Israelis to different destinations and receive them back in Israel without special restrictions, which will mark the start of the recovery of the aviation world in general and of the aviation and commercial activity at Ben-Gurion International Airport in particular.

I would like to take this opportunity to express my appreciation for the professional cooperation of all the partners.

I wish all those involved in the endeavor and their families the best of health



Dear friends and partners,

I hereby respectfully submit for your review a report summarizing the aviation activity at Ben - Gurion International Airport in 2020.

During the year, a total of 4,808,980 passengers on 54,921 international and domestic flights passed through Ben- Gurion Airport.

International passenger traffic in 2020 totaled 4,456,626 passengers, representing a decrease of 81.45% compared to 2019.

International aircraft traffic totaled 49,219 flights, representing a decrease of 69.03% compared to 2019.

International passenger traffic at Terminal 3 this year totaled 4,084,870 passengers, representing a decrease of 81% compared to 2019. Departing passengers on Terminal 1 International flights this year totaled 371,756 flights, representing a decrease of 84% compared to 2019.

On domestic flights 352,354 passengers passed through Ben- Gurion Airport this year, compared with 785,727 in 2019, a decrease of 55.15%.

During the year cargo weighing a total of 320,615 tons was handled, representing a decrease of 8.73% compared to 2019.

Israeli airlines carried 1,167,108 passengers in 2020, 26.18% of all travelers passing through Ben - Gurion Airport, a decrease of 84.14% relative to the previous year.

The airlines which contributed the most to the increase of passenger traffic this year are: EL AL ISRAEL AIRLINES, TURKISH AIRLINES and UNITED AIRLINES.

The Destination with the highest volume of activity was ISTANBUL, with a total of 263,643 passengers to and from, a decrease of 77.33% compared to the previous year.

The country with the highest volume of activity was UNITED STATES, with 529,197 passengers, constituting 11.87% of all activity.

Below you will find additional tables providing details about movements of aircraft, passengers and cargo at Ben - Gurion International Airport.

Sincerely yours,

**Shmuel Zakay**

Managing Director,

Ben-Gurion International Airport



# Content



## Aviation Activity

Aviation Activity Summary	1
International Activity Summary	2 - 4
Domestic Activity Summary	5



## International Activity

Distribution By Months	7 - 8
Distribution By Airlines	9 - 13
Distribution By Countries	14 - 16
Distribution By First Destination	17 - 22



## Cargo Activity

Distribution by Transporter	24
Distribution By Months	24
Distribution By Airlines	25 - 27
Distribution By Countries	28



## Domestic Activity

Distribution By Months	30 - 31
Distribution By Airlines	32





# Passengers and Aircrafts

## Aviation Activity at Ben Gurion International Airport

### International Activity

	Accumulated Since the beginning of the year		
	2020	2019	Rate Of Change
Incoming Aircrafts	24,625	79,467	-69.01%
Outgoing Aircrafts	24,594	79,498	-69.06%
<b>Total Aircrafts</b>	<b>49,219</b>	<b>158,965</b>	<b>-69.03%</b>
Incoming Passengers	2,235,792	11,994,348	-81.35%
Outgoing Passengers	2,220,834	12,041,322	-81.55%
Transit Passengers	2,005	9,852	-79.64%
<b>Total Passengers</b>	<b>4,456,626</b>	<b>24,035,670</b>	<b>-81.45%</b>

### Domestic Activity

	Accumulated Since the beginning of the year		
	2020	2019	Rate Of Change
Aircrafts	5,702	8,922	-36.09%
Passengers	352,354	785,727	-55.15%

### International and Domestic Activity Summary

	Accumulated Since the beginning of the year		
	2020	2019	Rate Of Change
Aircrafts	54,921	167,887	-67.28%
Passengers	4,808,980	24,821,397	-80.62%





# Passengers and Aircrafts

## Int'l Aviation Activity at Ben Gurion International Airport by Terminal

### Terminal 3

	Accumulated Since the beginning of the year		
	2020	2019	Rate of Change
Incoming Aircrafts	24,625	79,467	-69.01%
Outgoing Aircrafts	21,775	64,441	-66.20%
<b>Total Aircrafts</b>	<b>46,400</b>	<b>143,908</b>	<b>-67.75%</b>
Incoming Passengers	2,235,792	11,994,348	-81.35%
Outgoing Passengers	1,849,078	9,578,192	-80.69%
Transit Passengers	2,005	9,852	-79.64%
<b>Total Passengers</b>	<b>4,084,870</b>	<b>21,572,540</b>	<b>-81.06%</b>

### Terminal 1

	Accumulated Since the beginning of the year		
	2020	2019	Rate of Change
Incoming Aircrafts			
Outgoing Aircrafts	2,819	15,057	-81.27%
<b>Total Aircrafts</b>	<b>2,819</b>	<b>15,057</b>	<b>-81.27%</b>
Incoming Passengers			
Outgoing Passengers	371,756	2,463,130	-84.90%
<b>Total Passengers</b>	<b>371,756</b>	<b>2,463,130</b>	<b>-84.90%</b>





# Passengers and Aircrafts

Int'l Aviation Activity at Ben Gurion International Airport by Flight Type

## Schedule and Charter Flights

	Accumulated Since the beginning of the year		
	2020	2019	Rate of Change
Incoming Aircrafts	17,389	73,862	-76.45%
Outgoing Aircrafts	17,577	73,874	-76.20%
<b>Total Aircrafts</b>	<b>34,966</b>	<b>147,736</b>	<b>-76.33%</b>
Incoming Passengers	2,224,916	11,980,526	-81.42%
Outgoing Passengers	2,210,150	12,028,184	-81.62%
Transit Passengers	1,996	9,852	-79.74%
<b>Total Passengers</b>	<b>4,435,066</b>	<b>24,008,710</b>	<b>-81.52%</b>

## Private Flights

	Accumulated Since the beginning of the year		
	2020	2019	Rate of Change
Incoming Aircrafts	2,706	3,180	-14.90%
Outgoing Aircrafts	2,687	3,203	-16.10%
<b>Total Aircrafts</b>	<b>5,393</b>	<b>6,383</b>	<b>-15.50%</b>
Incoming Passengers	8,106	10,857	-25.33%
Outgoing Passengers	8,415	10,676	-21.17%
<b>Total Passengers</b>	<b>16,521</b>	<b>21,533</b>	<b>-23.27%</b>







# Passengers and Aircrafts

## Int'l Aviation Activity at Ben Gurion International Airport by Flight Type

### Cargo Flights

	Accumulated Since the beginning of the year		
	2020	2019	Rate of Change
Incoming Aircrafts	4,316	2,205	95.73%
Outgoing Aircrafts	4,109	2,175	88.91%
<b>Total Aircrafts</b>	<b>8,425</b>	<b>4,380</b>	<b>92.35%</b>
Incoming Passengers	496	681	-27.16%
Outgoing Passengers	452	827	-45.34%
<b>Total Passengers</b>	<b>948</b>	<b>1,508</b>	<b>-37.13%</b>

### Other Flights

	Accumulated Since the beginning of the year		
	2020	2019	Rate of Change
Incoming Aircrafts	214	220	-2.72%
Outgoing Aircrafts	221	246	-10.16%
<b>Total Aircrafts</b>	<b>435</b>	<b>466</b>	<b>-6.65%</b>
Incoming Passengers	2,274	2,284	-0.43%
Outgoing Passengers	1,817	1,635	11.13%
<b>Total Passengers</b>	<b>4,091</b>	<b>3,919</b>	<b>4.38%</b>





# Passengers and Aircrafts

## Domestic Aviation Activity at Ben Gurion International Airport by Flight Type

### Schedule Flights

	Accumulated Since the beginning of the year		
	2020	2019	Rate of Change
Aircrafts	4,284	7,649	-43.99%
Passengers	351,587	782,979	-55.09%

### Private Flights

	Accumulated Since the beginning of the year		
	2020	2019	Rate of Change
Aircrafts	658	529	24.38%
Passengers	515	806	-36.10%

### Other Flights

	Accumulated Since the beginning of the year		
	2020	2019	Rate of Change
Aircrafts	760	744	2.15%
Passengers	252	1,942	-87.02%



# International Activity

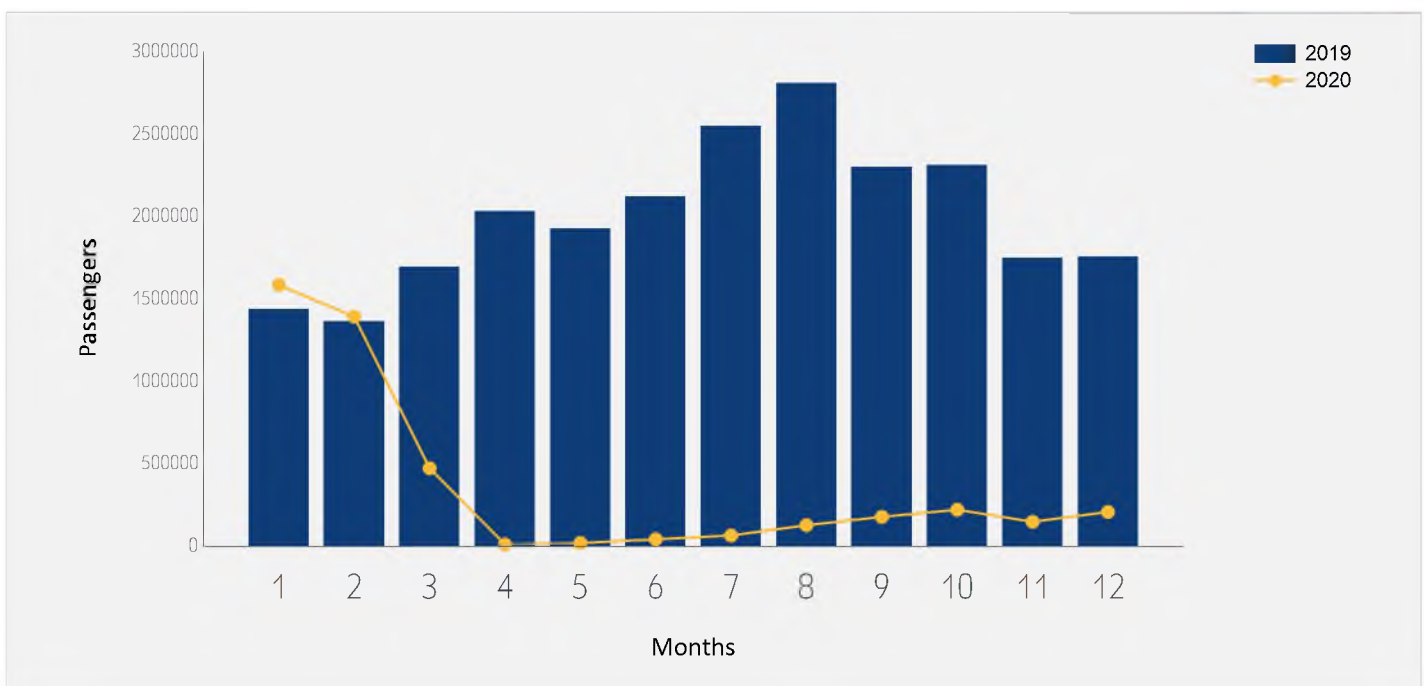




# International Passenger Traffic

## Distribution by Months

Months	2020	2019	Rate of Change
January	1,583,680	1,435,735	10.30%
February	1,391,670	1,361,318	2.22%
March	471,645	1,693,381	-72.14%
April	9,377	2,032,433	-99.53%
May	18,217	1,928,012	-99.05%
June	40,970	2,120,228	-98.06%
July	64,002	2,549,095	-97.48%
August	126,157	2,807,308	-95.50%
September	176,878	2,298,885	-92.30%
October	220,125	2,309,127	-90.46%
November	147,166	1,746,436	-91.57%
December	206,739	1,753,712	-88.21%
<b>Total</b>	<b>4,456,626</b>	<b>24,035,670</b>	<b>-81.45%</b>

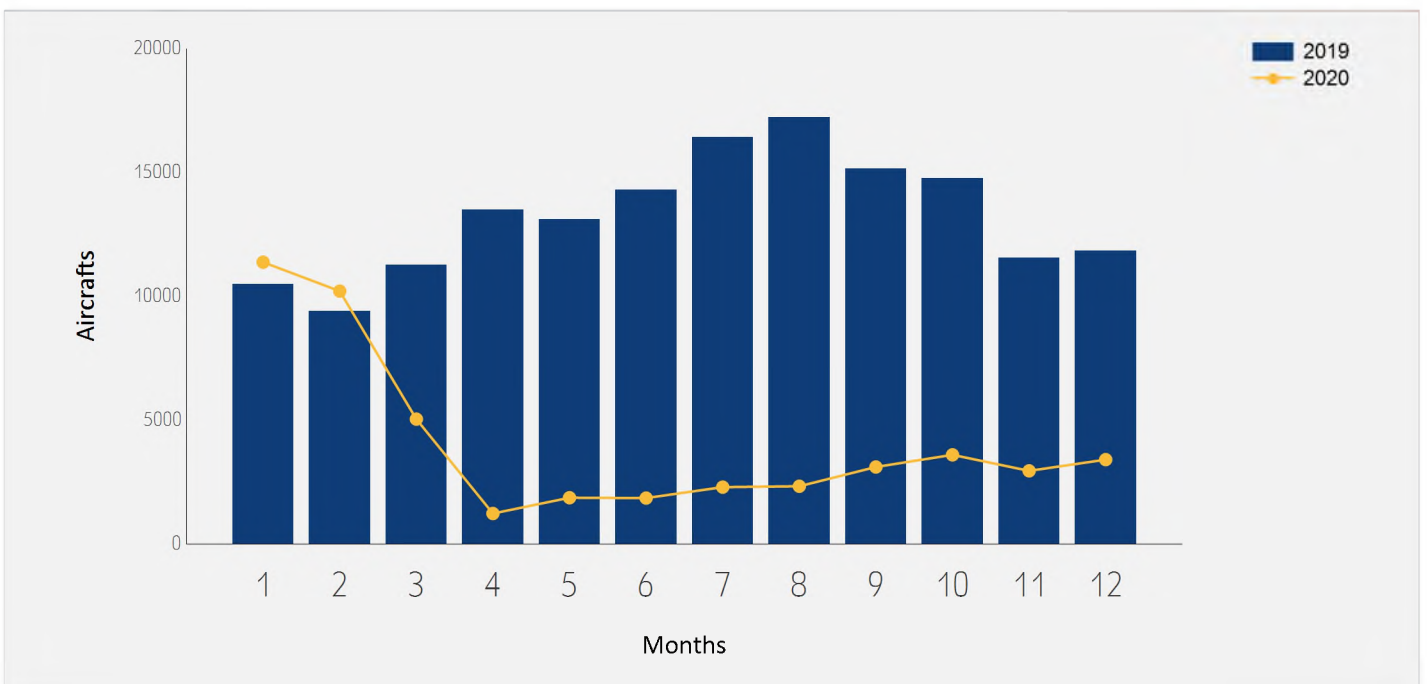




# International Aircraft Traffic

## Distribution by Months

Months	2020	2019	Rate of Change
January	11,373	10,490	8.41%
February	10,206	9,403	8.53%
March	5,037	11,265	-55.28%
April	1,225	13,489	-90.91%
May	1,863	13,098	-85.77%
June	1,849	14,300	-87.06%
July	2,291	16,426	-86.05%
August	2,327	17,222	-86.48%
September	3,104	15,147	-79.50%
October	3,595	14,751	-75.62%
November	2,948	11,541	-74.45%
December	3,401	11,833	-71.25%
<b>Total</b>	<b>49,219</b>	<b>158,965</b>	<b>-69.03%</b>





# Int'l Accumulated Passenger Traffic

## Distribution by Airline

		Accumulated 2020		Accumulated 2019		
Airline		Passengers	Rate of Total	Passengers	Rate of Total	Rate of Change
LY	EL AL ISRAEL AIRLINES	906,619	20.34%	5,831,656	24.26%	-84.45%
TK	TURKISH AIRLINES	310,950	6.97%	1,170,959	4.87%	-73.44%
UA	UNITED AIRLINES	265,747	5.96%	682,530	2.83%	-61.06%
EZY	EASYJET	258,924	5.80%	1,172,071	4.87%	-77.90%
W6	WIZZAIR	244,445	5.48%	1,279,197	5.32%	-80.89%
FR	RYANAIR	233,878	5.24%	752,868	3.13%	-68.93%
6H	ISRAIR AIRLINES	190,898	4.28%	767,472	3.19%	-75.12%
PC	PEGASUS AIRLINES	164,051	3.68%	572,142	2.38%	-71.32%
LH	LUFTHANSA	139,604	3.13%	604,994	2.51%	-76.92%
SU	AEROFLOT RUSSIAN AIRLINES	125,098	2.80%	772,517	3.21%	-83.80%
PS	UKRAINE INTL AIR	115,420	2.58%	676,219	2.81%	-82.93%
AF	AIR FRANCE	88,117	1.97%	322,807	1.34%	-72.70%
A3	AEGEAN AIRLINES	81,838	1.83%	502,915	2.09%	-83.72%
DL	DELTA AIRLINES	77,362	1.73%	262,057	1.09%	-70.47%
BA	BRITISH AIRWAYS PLC	76,441	1.71%	358,575	1.49%	-78.68%
TO	TRANSAVIA FRANCE	71,995	1.61%	374,685	1.55%	-80.78%
IZ	ARKIA ISRAELI AIRLINES	66,186	1.48%	759,632	3.16%	-91.28%
LX	SWISS INT'L AIRLINES	57,870	1.29%	319,794	1.33%	-81.90%
AZ	ALITALIA	55,578	1.24%	468,334	1.94%	-88.13%
OS	AUSTRIAN AIRLINES	51,122	1.14%	321,645	1.33%	-84.10%
LO	LOT POLISH AIRLINES	46,302	1.03%	287,684	1.19%	-83.90%





# Int'l Accumulated Passenger Traffic

## Distribution by Airline

		Accumulated 2020		Accumulated 2019		
Airline		Passengers	Rate of Total	Passengers	Rate of Total	Rate of Change
ET	ETHIOPIAN AIRLINES	42,130	0.94%	154,216	0.64%	-72.68%
AC	AIR CANADA	41,539	0.93%	211,218	0.87%	-80.33%
AEA	AIR EUROPA	35,514	0.79%	239,232	0.99%	-85.15%
U6	URAL AIR	34,210	0.76%	239,103	0.99%	-85.69%
HV	TRANSAVIA	32,925	0.73%	212,639	0.88%	-84.51%
VS	VIRGIN ATLANTIC AIRWAYS	31,118	0.69%	44,523	0.18%	-30.10%
IB	IBERIA	30,252	0.67%	191,935	0.79%	-84.23%
BZ	BLUE BIRD AIRWAYS	28,884	0.64%	250,088	1.04%	-88.45%
RJ	ROYAL JORDANIAN	27,392	0.61%	169,671	0.70%	-83.85%
KL	K.L.M.	26,703	0.59%	123,378	0.51%	-78.35%
B2	BELAVIA AIRLINE	26,035	0.58%	70,422	0.29%	-63.03%
A9	GEORGIAN AIRWAYS	23,240	0.52%	141,929	0.59%	-83.62%
SN	BRUSSELS AIRLINES	22,958	0.51%	197,992	0.82%	-88.40%
AI	AIR INDIA	22,513	0.50%	101,945	0.42%	-77.91%
FZ	FLYDUBAI	21,600	0.48%			
OE	LAUDA MOTION	19,929	0.44%	21,406	0.08%	-6.89%
CX	CATHAY PACIFIC AIRWAYS	19,599	0.43%	172,118	0.71%	-88.61%
RO	TAROM - RUMANIAN AIR TRAN	19,023	0.42%	129,378	0.53%	-85.29%
FB	BULGARIA AIR	18,800	0.42%	117,408	0.48%	-83.98%
QS	SMARTWINGS	18,197	0.40%	202,711	0.84%	-91.02%
9U	AIR MOLDOVA	16,278	0.36%	58,941	0.24%	-72.38%





# Int'l Accumulated Passenger Traffic

## Distribution by Airline

		Accumulated 2020		Accumulated 2019		
Airline		Passengers	Rate of Total	Passengers	Rate of Total	Rate of Change
D8	NORWEGIAN AIR SHUTTLE	15,916	0.35%	132,649	0.55%	-88.00%
LA	LATAM AIRLINES	15,628	0.35%	65,612	0.27%	-76.18%
VY	VUELING AIRLINES S.A.	14,964	0.33%	164,343	0.68%	-90.89%
FV	ROSSIYA AIRLINES	13,968	0.31%	104,224	0.43%	-86.59%
TP	AIR PORTUGAL	12,544	0.28%	81,610	0.33%	-84.62%
TWI	TAILWIND AIRLINES	12,312	0.27%	93,806	0.39%	-86.87%
KE	KOREAN AIR	11,780	0.26%	61,089	0.25%	-80.71%
OB	BLUE AIR TRANSPORT AERIAN	11,669	0.26%	92,605	0.38%	-87.39%
PQ	SKYUP AIRLINES	10,427	0.23%	8,366	0.03%	24.63%
HM	AIR SEYCHELLES	9,889	0.22%	1,056		
CY	CYPRUS AIRWAYS	9,192	0.20%	99,413	0.41%	-90.75%
HU	HAINAN AIRLINES	7,966	0.17%	154,646	0.64%	-94.84%
4D	AIR SINAI	7,826	0.17%	41,854	0.17%	-81.30%
FH	FREEBIRD AIRLINES	7,401	0.16%	18,249	0.07%	-59.44%
XC	CORONDON AIRLINES	7,220	0.16%	153,562	0.63%	-95.29%
MJ	MYWAY AIRLINES	7,166	0.16%	36,531	0.15%	-80.38%
HY	UZBEKISTAN AIR	6,593	0.14%	61,897	0.25%	-89.34%
JU	AIR SERBIA	6,476	0.14%	42,841	0.17%	-84.88%
8Q	ONUR AIR	6,459	0.14%	115,050	0.47%	-94.38%
KK	ATLAS GLOBAL	6,249	0.14%	200,393	0.83%	-96.88%
DY	NORWEGIAN AIR SHUTTLE ASA	5,905	0.13%	77,365	0.32%	-92.36%







# Int'l Accumulated Passenger Traffic

## Distribution by Airline

Airline		Accumulated 2020		Accumulated 2019		
		Passengers	Rate of Total	Passengers	Rate of Total	Rate of Change
KM	AIR MALTA	4,609	0.10%	47,636	0.19%	-90.32%
	OTHERS	57,183	1.28%	869,867	3.61%	-93.42%
	<b>TOTAL</b>	<b>4,456,626</b>		<b>24,035,670</b>		<b>-81.45%</b>





# Int'l Accumulated Passenger Traffic

## Distribution by Israeli Airlines

		Accumulated 2020		Accumulated 2019		
Airlines		Passengers	Rate of Total	Passengers	Rate of Total	Rate of Change
LY	EL AL ISRAEL AIRLINES	906,619	20.34%	5,831,656	24.26%	-84.45%
6H	ISR AIR AIRLINES	190,898	4.28%	767,472	3.19%	-75.12%
IZ	ARKIA ISRAELI AIRLINES	66,186	1.48%	759,632	3.16%	-91.28%
	OTHERS	3,405	0.07%	3,782	0.01%	-9.96%
	<b>TOTAL</b>	<b>1,167,108</b>		<b>7,362,542</b>		<b>-84.14%</b>





# Int'l Accumulated Passenger Traffic

## Distribution by Countries

Countries	Accumulated 2020		Accumulated 2019		
	Passengers	Rate of Total	Passengers	Rate of Total	Rate of Change
UNITED STATES	529,197	11.87%	1,828,373	7.60%	-71.05%
TURKEY	514,243	11.53%	2,325,418	9.67%	-77.88%
FRANCE	308,458	6.92%	1,515,011	6.30%	-79.63%
GERMANY	289,828	6.50%	1,380,666	5.74%	-79.00%
UNITED KINGDOM	284,427	6.38%	1,294,659	5.38%	-78.03%
RUSSIAN FEDERATION	206,882	4.64%	1,321,016	5.49%	-84.33%
GREECE	192,966	4.32%	1,450,486	6.03%	-86.69%
ITALY	183,310	4.11%	1,531,522	6.37%	-88.03%
UKRAINE	162,853	3.65%	918,956	3.82%	-82.27%
SPAIN	153,138	3.43%	1,025,716	4.26%	-85.07%
POLAND	130,408	2.92%	774,992	3.22%	-83.17%
ROMANIA	120,238	2.69%	817,141	3.39%	-85.28%
SWITZERLAND	120,154	2.69%	683,546	2.84%	-82.42%
AUSTRIA	119,445	2.68%	615,753	2.56%	-80.60%
BULGARIA	112,256	2.51%	513,608	2.13%	-78.14%
NETHERLANDS	108,180	2.42%	657,264	2.73%	-83.54%
HUNGARY	99,843	2.24%	555,833	2.31%	-82.03%
CYPRUS	79,490	1.78%	723,517	3.01%	-89.01%
UNITED ARAB EMIRATES	72,018	1.61%			
GEORGIA	61,522	1.38%	473,452	1.96%	-87.00%
CANADA	55,026	1.23%	282,083	1.17%	-80.49%
CZECH REPUBLIC	47,250	1.06%	381,693	1.58%	-87.62%





# Int'l Accumulated Passenger Traffic

## Distribution by Countries

Countries	Accumulated 2020		Accumulated 2019		
	Passengers	Rate of Total	Passengers	Rate of Total	Rate of Change
BELGIUM	47,111	1.05%	294,788	1.22%	-84.01%
THAILAND	44,345	0.99%	246,057	1.02%	-81.97%
CHINA	43,991	0.98%	527,857	2.19%	-91.66%
ETHIOPIA	42,561	0.95%	153,844	0.64%	-72.33%
INDIA	42,494	0.95%	162,895	0.67%	-73.91%
JORDAN	31,417	0.70%	180,223	0.74%	-82.56%
SERBIA	27,785	0.62%	89,577	0.37%	-68.98%
BELARUS	26,225	0.58%	70,520	0.29%	-62.81%
SEYCHELLES	23,686	0.53%	6,025	0.02%	
PORTUGAL	19,659	0.44%	141,483	0.58%	-86.10%
MOLDOVA	17,977	0.40%	71,208	0.29%	-74.75%
BRAZIL	15,433	0.34%	38,501	0.16%	-59.91%
LITHUANIA	15,051	0.33%	85,338	0.35%	-82.36%
SOUTH AFRICA	12,876	0.28%	67,054	0.27%	-80.79%
SOUTH KOREA	12,208	0.27%	61,336	0.25%	-80.09%
FINLAND	11,346	0.25%	65,792	0.27%	-82.75%
EGYPT	10,843	0.24%	43,544	0.18%	-75.09%
AZERBAIJAN	9,050	0.20%	96,555	0.40%	-90.62%
DENMARK	7,314	0.16%	50,431	0.20%	-85.49%
UZBEKISTAN	7,177	0.16%	61,897	0.25%	-88.40%
CROATIA	6,506	0.14%	63,727	0.26%	-89.79%
SWEDEN	5,922	0.13%	51,763	0.21%	-88.55%





# Int'l Accumulated Passenger Traffic

## Distribution by Countries

Countries	Accumulated 2020		Accumulated 2019		
	Passengers	Rate of Total	Passengers	Rate of Total	Rate of Change
MALTA	4,787	0.10%	48,391	0.20%	-90.10%
RWANDA	3,811	0.08%	9,803	0.04%	-61.12%
TANZANIA	3,606	0.08%	19,782	0.08%	-81.77%
OTHERS	12,313	0.27%	256,574	1.06%	-95.20%
<b>TOTAL</b>	<b>4,456,626</b>		<b>24,035,670</b>		<b>-81.45%</b>





# Int'l Accumulated Passenger Traffic

## Distribution by First Destination

Destination	Accumulated 2020		Accumulated 2019		
	Passengers	Rate of Total	Passengers	Rate of Total	Rate of Change
ISTANBUL	263,643	5.91%	1,163,391	4.84%	-77.33%
NEW YORK - NEWARK	241,097	5.40%	661,383	2.75%	-63.54%
ISTANBUL-SABIHA GOKCHEN	195,414	4.38%	515,280	2.14%	-62.07%
PARIS-CHARLES DE GAULLE	186,110	4.17%	852,766	3.54%	-78.17%
LONDON - HEATHROW	160,191	3.59%	678,289	2.82%	-76.38%
NEW YORK - J.F.KENNEDY	150,967	3.38%	632,064	2.62%	-76.11%
ATHENS	137,811	3.09%	521,370	2.16%	-73.56%
MOSCOW	124,944	2.80%	772,706	3.21%	-83.83%
KIEV,KYIV-BORISPOL	123,725	2.77%	647,741	2.69%	-80.89%
FRANKFURT	120,254	2.69%	505,051	2.10%	-76.18%
VIENNA	116,527	2.61%	598,468	2.48%	-80.52%
ROME - FIUMICINO	105,081	2.35%	814,254	3.38%	-87.09%
AMSTERDAM	100,863	2.26%	606,442	2.52%	-83.36%
BUCHAREST - OTOPENI	100,172	2.24%	616,103	2.56%	-83.74%
MADRID	99,492	2.23%	568,529	2.36%	-82.50%
LUTON	94,100	2.11%	486,606	2.02%	-80.66%
BUDAPEST	93,639	2.10%	511,156	2.12%	-81.68%
SOFIA	83,929	1.88%	274,292	1.14%	-69.40%
ZURICH	77,605	1.74%	462,096	1.92%	-83.20%
DUBAI	69,625	1.56%			
WARSAW	65,482	1.46%	460,198	1.91%	-85.77%
PARIS-ORLY	65,003	1.45%	295,300	1.22%	-77.98%





# Int'l Accumulated Passenger Traffic

## Distribution by First Destination

Destination	Accumulated 2020		Accumulated 2019		
	Passengers	Rate of Total	Passengers	Rate of Total	Rate of Change
SAN FRANCISCO	57,339	1.28%	228,388	0.95%	-74.89%
MUNICH	55,610	1.24%	370,126	1.53%	-84.97%
TORONTO	54,899	1.23%	251,498	1.04%	-78.17%
ANTALYA	53,221	1.19%	533,138	2.21%	-90.01%
BARCELONA	50,694	1.13%	431,273	1.79%	-88.24%
PRAGUE-RUZYNE	47,158	1.05%	381,616	1.58%	-87.64%
BERLIN -SCHOENEFELD	47,123	1.05%	280,094	1.16%	-83.17%
BERLIN TEGEL	44,833	1.00%	133,944	0.55%	-66.52%
TBILISI	44,170	0.99%	254,409	1.05%	-82.63%
BANGKOK INTL.-SUARNABHUM	44,026	0.98%	246,057	1.02%	-82.10%
LARNACA	43,253	0.97%	497,154	2.06%	-91.29%
ADDIS ABABA	42,561	0.95%	153,844	0.64%	-72.33%
MILAN-MALPENSA	39,754	0.89%	293,573	1.22%	-86.45%
PAPHOS	36,207	0.81%	226,320	0.94%	-84.00%
BRUSSELS	33,291	0.74%	280,654	1.16%	-88.13%
GENEVA	31,191	0.69%	152,169	0.63%	-79.50%
AMMAN (QUEEN ALIA INT'L)	30,980	0.69%	179,153	0.74%	-82.70%
KRAKOW	29,790	0.66%	122,604	0.51%	-75.70%
HONG KONG INT'L	29,401	0.65%	280,243	1.16%	-89.50%
BELGRADE	27,785	0.62%	89,577	0.37%	-68.98%
MINSK	26,139	0.58%	70,512	0.29%	-62.92%
MAHE SEYCHELLES INTL	23,686	0.53%	6,025	0.02%	





# Int'l Accumulated Passenger Traffic

## Distribution by First Destination

Destination	Accumulated 2020		Accumulated 2019		
	Passengers	Rate of Total	Passengers	Rate of Total	Rate of Change
DELHI	23,018	0.51%	102,120	0.42%	-77.45%
THESSALONIKI	22,393	0.50%	190,129	0.79%	-88.22%
SOCHI	21,913	0.49%	127,333	0.52%	-82.79%
MIAMI INTERNATIONAL	21,493	0.48%	79,365	0.33%	-72.91%
VARNA	20,062	0.45%	96,665	0.40%	-79.24%
LISBON	19,602	0.43%	139,412	0.58%	-85.93%
ST. PETERSBURG	19,086	0.42%	133,123	0.55%	-85.66%
MOSCOW-DOMODEDOVO	18,209	0.40%	130,098	0.54%	-86.00%
CHISINAU	17,977	0.40%	71,208	0.29%	-74.75%
ODESA	17,914	0.40%	131,286	0.54%	-86.35%
WASHINGTON-DULLES	17,875	0.40%	49,341	0.20%	-63.77%
LOS ANGELES	17,489	0.39%	96,999	0.40%	-81.96%
BATUMI	17,352	0.38%	219,043	0.91%	-92.07%
RHODES-PARADISI	16,872	0.37%	263,665	1.09%	-93.60%
SAO PAULO (GUARULHOS INT')	15,433	0.34%	38,120	0.15%	-59.51%
MARSEILLE	15,410	0.34%	74,544	0.31%	-79.32%
MOSCOW-ZHUKOVSKY INTL AIR	15,186	0.34%	105,391	0.43%	-85.59%
LYON - SATOLAS	14,609	0.32%	102,578	0.42%	-85.75%
VILNIUS INTL	14,412	0.32%	56,578	0.23%	-74.52%
BERGAMO	13,641	0.30%	89,679	0.37%	-84.78%
HERAKLION	13,452	0.30%	279,366	1.16%	-95.18%
BRUSSELS - CHARLEROI	13,403	0.30%	13,008	0.05%	3.03%







# Int'l Accumulated Passenger Traffic

## Distribution by First Destination

Destination	Accumulated 2020		Accumulated 2019		
	Passengers	Rate of Total	Passengers	Rate of Total	Rate of Change
MANCHESTER	13,260	0.29%	62,230	0.25%	-78.69%
VENICE	12,974	0.29%	101,662	0.42%	-87.23%
MUMBAI	12,900	0.28%	51,886	0.21%	-75.13%
JOHANNESBURG	12,876	0.28%	67,054	0.27%	-80.79%
SEOUL-INCHEON INTL AIRPOR	12,208	0.27%	61,321	0.25%	-80.09%
WARSAW- MODLIN	12,084	0.27%	12,486	0.05%	-3.21%
BASEL	11,266	0.25%	69,102	0.28%	-83.69%
BOSTON-LOGAN INT	11,031	0.24%	65,643	0.27%	-83.19%
KATOWICE	10,523	0.23%	71,543	0.29%	-85.29%
LONDON - GATWICK	9,076	0.20%	22,319	0.09%	-59.33%
BAKU HEYDAR ALIYEV INT'L	9,046	0.20%	96,544	0.40%	-90.63%
BEIJING	8,843	0.19%	124,112	0.51%	-92.87%
CAIRO INTERNATIONAL	8,291	0.18%	42,713	0.17%	-80.58%
COPENHAGEN KASTRUP	7,308	0.16%	50,425	0.20%	-85.50%
EINDHOVEN	7,286	0.16%	50,581	0.21%	-85.59%
LONDON -STANSTED	7,198	0.16%	44,651	0.18%	-83.87%
TASHKENT	7,164	0.16%	61,897	0.25%	-88.42%
ROVANIEMI	7,128	0.15%	9,755	0.04%	-26.92%
GRENOBLE-SAUNT GEOIRS	7,060	0.15%	18,165	0.07%	-61.13%
NICE	7,010	0.15%	70,803	0.29%	-90.09%
BADEN BADEN	6,967	0.15%	36,985	0.15%	-81.16%
MEMMINGEN	6,723	0.15%	34,649	0.14%	-80.59%





# Int'l Accumulated Passenger Traffic

## Distribution by First Destination

Destination	Accumulated 2020		Accumulated 2019		
	Passengers	Rate of Total	Passengers	Rate of Total	Rate of Change
IASI	6,477	0.14%	57,325	0.23%	-88.70%
BURGAS	6,244	0.14%	137,350	0.57%	-95.45%
DEBRECEN	6,204	0.13%	44,673	0.18%	-86.11%
DNEPROPETROVSK	6,124	0.13%	39,918	0.16%	-84.65%
CHICAGO - O'HARE	6,123	0.13%	3		
POZNAN	6,109	0.13%	36,254	0.15%	-83.14%
STOCKHOLM-ARLANDA	5,916	0.13%	51,752	0.21%	-88.56%
KHARKOV	5,882	0.13%	43,261	0.17%	-86.40%
CLUJ NAPOCA	5,612	0.12%	51,474	0.21%	-89.09%
NURNBERG	5,526	0.12%	7,960	0.03%	-30.57%
NAPLES-CAPODICHINO	5,359	0.12%	64,988	0.27%	-91.75%
BOLOGNA-BORGIO PANIGALE	5,332	0.11%	5,670	0.02%	-5.96%
SIBIU	5,205	0.11%	30,249	0.12%	-82.79%
TOULOUSE	5,042	0.11%	5,019	0.02%	0.45%
LVOV	5,007	0.11%	29,698	0.12%	-83.14%
BORDEAUX	4,944	0.11%	28,087	0.11%	-82.39%
MALTA	4,787	0.10%	48,391	0.20%	-90.10%
HELSINKI	4,180	0.09%	56,014	0.23%	-92.53%
LAS VEGAS-MCCARRAN INTL	4,038	0.09%	11,394	0.04%	-64.56%
KIGALI (KANOMBE INT'L)	3,811	0.08%	9,803	0.04%	-61.12%
ZAPOROZHYE	3,563	0.07%	1,727		106.31%
WROCLAW	3,538	0.07%	30,626	0.12%	-88.44%





# Int'l Accumulated Passenger Traffic

## Distribution by First Destination

Destination	Accumulated 2020		Accumulated 2019		
	Passengers	Rate of Total	Passengers	Rate of Total	Rate of Change
GOA	3,422	0.07%	3,969	0.01%	-13.78%
ROSTOV	3,369	0.07%	5,726	0.02%	-41.16%
ZANZIBAR	3,321	0.07%	14,891	0.06%	-77.69%
ZAGREB	3,200	0.07%	35,739	0.14%	-91.04%
DUBROVNIK	3,134	0.07%	14,233	0.05%	-77.98%
KUCHIN	3,124	0.07%	4,920	0.02%	-36.50%
NANTES	2,990	0.06%	47,114	0.19%	-93.65%
SALZBURG	2,904	0.06%	17,238	0.07%	-83.15%
TIMISOARA	2,742	0.06%	33,089	0.13%	-91.71%
CHENGDU	2,671	0.05%	40,392	0.16%	-93.38%
KRASNODAR	2,364	0.05%	18,987	0.07%	-87.54%
PLOVDIV	2,021	0.04%	5,301	0.02%	-61.87%
OTHERS	42,533	0.95%	1,081,002	4.49%	-96.06%
<b>TOTAL</b>	<b>4,456,626</b>		<b>24,035,670</b>		<b>-81.45%</b>



# Cargo Activity





# Cargo Handling

## Distribution by Transporter

Transporter	2020 (Ton)	2019 (Ton)	Rate of Change
Cargo on Passenger Aircrafts - Incoming	39,563	108,629	-63.57%
Cargo on Passenger Aircrafts - Outgoing	34,480	80,084	-56.94%
<b>Total Cargo on Passenger Aircrafts</b>	<b>74,043</b>	<b>188,712</b>	<b>-60.76%</b>
Cargo on Cargo Aircrafts - Incoming	156,934	97,846	60.38%
Cargo on Cargo Aircrafts - Outgoing	89,639	64,753	38.43%
<b>Total Cargo on Cargo Aircrafts</b>	<b>246,572</b>	<b>162,595</b>	<b>51.64%</b>
<b>Total</b>	<b>320,615</b>	<b>351,307</b>	<b>-8.73%</b>

## Distribution by Months

Month	2020 (Ton)			2019 (Ton)			Rate of Change
	Cargo	Mail	Total	Cargo	Mail	Total	
January	28,549	1,394	29,943	27,448	1,278	28,725	4.24%
February	28,188	1,033	29,221	26,057	1,138	27,197	7.44%
March	26,524	535	27,058	31,430	1,360	32,790	-17.48%
April	20,700	118	20,818	27,365	1,454	28,818	-27.76%
May	26,974	112	27,086	26,820	1,499	28,318	-4.35%
June	24,918	216	25,134	25,508	1,329	26,837	-6.34%
July	23,733	331	24,065	27,092	1,462	28,554	-15.72%
August	24,233	464	24,698	27,416	1,432	28,847	-14.38%
September	23,039	526	23,566	27,588	1,503	29,091	-18.99%
October	26,262	652	26,913	24,555	1,584	26,138	2.96%
November	29,383	666	30,049	30,247	1,722	31,968	-6.00%
December	31,209	855	32,064	32,137	1,887	34,024	-5.76%
<b>Total</b>	<b>313,712</b>	<b>6,902</b>	<b>320,615</b>	<b>333,663</b>	<b>17,648</b>	<b>351,307</b>	<b>-8.73%</b>





# Accumulated Cargo Handling on Passengers Aircrafts

## Distribution by Airline

		Accumulated 2020				Accumulated 2019				
Airline		Incoming Cargo (Ton)	Outgoing Cargo (Ton)	Cargo (Ton)	Rate of Total	Incoming Cargo (Ton)	Outgoing Cargo (Ton)	Cargo (Ton)	Rate of Total	Rate of Change
UA	UNITED AIRLINES	8,316	10,646	18,963	25.61%	9,532	11,743	21,275	11.27%	-10.86%
LY	EL AL ISRAEL AIRLINES	8,749	8,464	17,213	23.24%	32,939	33,304	66,244	35.10%	-74.01%
TK	TURKISH AIRLINES	4,338	1,297	5,635	7.61%	11,766	3,084	14,849	7.86%	-62.05%
LX	SWISS INT'L AIRLINES	2,770	1,813	4,583	6.18%	7,044	4,680	11,724	6.21%	-60.90%
DL	DELTA AIRLINES	1,960	2,389	4,348	5.87%	2,277	1,479	3,756	1.99%	15.76%
SU	AEROFLOT RUSSIAN AIRLINES	1,893	1,775	3,668	4.95%	7,499	4,246	11,745	6.22%	-68.76%
AC	AIR CANADA	1,563	1,984	3,547	4.79%	4,321	3,592	7,913	4.19%	-55.17%
BA	BRITISH AIRWAYS PLC	2,068	1,142	3,209	4.33%	4,377	2,525	6,902	3.65%	-53.50%
VS	VIRGIN ATLANTIC AIRWAYS	1,235	773	2,008	2.71%	761	521	1,283	0.67%	56.50%
ET	ETHIOPIAN AIRLINES	1,092	799	1,890	2.55%	483	133	616	0.32%	
CX	CATHAY PACIFIC AIRWAYS	750	532	1,282	1.73%	4,061	2,930	6,991	3.70%	-81.66%
AE A	AIR EUROPA	922	234	1,156	1.56%	4,160	988	5,147	2.72%	-77.54%
IB	IBERIA	709	218	927	1.25%	2,569	1,427	3,995	2.11%	-76.79%
AI	AIR INDIA	509	286	795	1.07%	2,052	1,049	3,100	1.64%	-74.35%
PC	PEGASUS AIRLINES	324	313	637	0.86%	1,078	445	1,523	0.80%	-58.17%
LH	LUFTHANSA	299	212	510	0.68%	969	785	1,754	0.92%	-70.92%
LA	LATAM AIRLINES	203	152	354	0.47%	285	433	718	0.38%	-50.69%
HU	HAINAN AIRLINES	268	79	347	0.46%	4,888	2,055	6,944	3.67%	-95.00%
PS	UKRAINE INTL AIR	218	125	343	0.46%	561	497	1,058	0.56%	-67.58%
KE	KOREAN AIR	100	168	268	0.36%	1,126	760	1,885	0.99%	-85.78%
AF	AIR FRANCE	79	168	247	0.33%	151	341	492	0.26%	-49.79%
6H	ISRAIR AIRLINES	73	146	218	0.29%	3	37	39	0.02%	





# Accumulated Cargo Handling on Passengers Aircrafts

## Distribution by Airline

		Accumulated 2020				Accumulated 2019				
Airline		Incoming Cargo (Ton)	Outgoing Cargo (Ton)	Cargo (Ton)	Rate of Total	Incoming Cargo (Ton)	Outgoing Cargo (Ton)	Cargo (Ton)	Rate of Total	Rate of Change
AZ	ALITALIA	73	126	199	0.26%	496	446	943	0.49%	-78.89%
RJ	ROYAL JORDANIAN	167	21	188	0.25%	817	116	933	0.49%	-79.84%
A3	AEGEAN AIRLINES	69	82	151	0.20%	113	199	311	0.16%	-51.44%
B2	BELAVIA AIRLINE	63	80	143	0.19%	58	92	150	0.07%	-4.66%
HY	UZBEKISTAN AIR	71	68	139	0.18%	141	265	406	0.21%	-65.76%
3U	SICHUAN AIRLINES	78	59	138	0.18%	1,002	602	1,604	0.84%	-91.39%
QS	SMARTWINGS	65	34	98	0.13%	333	102	435	0.23%	-77.47%
SN	BRUSSELS AIRLINES	71	18	88	0.11%	280	119	399	0.21%	-77.94%
LO	LOT POLISH AIRLINES	65	22	87	0.11%	390	88	478	0.25%	-81.79%
OS	AUSTRIAN AIRLINES	51	24	75	0.10%	213	168	381	0.20%	-80.31%
	OTHERS	355	234	589	0.79%	1,885	832	2,718	1.44%	-78.32%
	<b>TOTAL</b>	<b>39,564</b>	<b>34,480</b>	<b>74,044</b>		<b>108,629</b>	<b>80,084</b>	<b>188,712</b>		<b>-60.76%</b>





# Accumulated Cargo Handling on Cargo Aircrafts

## Distribution by Airline

		Accumulated 2020				Accumulated 2019				
Airline		Incoming Cargo Ton)	Outgoing Cargo Ton)	Cargo Ton)	Rate of Total	Incoming Cargo Ton)	Outgoing Cargo Ton)	Cargo Ton)	Rate of Total	Rate of Change
LY	EL AL ISRAEL AIRLINES	29,485	17,219	46,704	18.94%	7,881	5,740	13,621	8.37%	
ICL	C.A.L ISRAELI CARGO	21,162	12,210	33,372	13.53%	29,311	21,179	50,490	31.05%	-33.90%
FRH	CHALLENGE AIRLINES	18,497	13,929	32,426	13.15%	3,930	2,793	6,723	4.13%	
TK	TURKISH AIRLINES	19,447	6,051	25,498	10.34%	8,340	3,595	11,935	7.34%	113.64%
QY	EUROPEAN AIR TRANSPORT	12,327	8,747	21,074	8.54%	6,225	4,811	11,036	6.78%	90.95%
AZG	SILK WAY WEST AIRLINES	8,753	8,470	17,222	6.98%	4,992	6,268	11,260	6.92%	52.94%
MNB	MNG CARGO AIRLINES	12,612	3,097	15,709	6.37%	10,497	3,721	14,218	8.74%	10.48%
LH	LUFTHANSA	7,490	5,748	13,237	5.36%	7,229	5,398	12,627	7.76%	4.83%
FX	FEDERAL EXPRESS	5,430	3,958	9,388	3.80%	5,774	4,583	10,356	6.36%	-9.34%
3V	ASL AIRLINES BELGIUM	3,770	2,241	6,010	2.43%	8,926	4,213	13,139	8.08%	-54.25%
3U	SICHUAN AIRLINES	4,157	931	5,088	2.06%					
BA	BRITISH AIRWAYS PLC	2,357	1,993	4,350	1.76%					
CX	CATHAY PACIFIC AIRWAYS	1,950	1,236	3,186	1.29%					
HU	HAINAN AIRLINES	2,580	43	2,622	1.06%					
SU	AEROFLOT RUSSIAN AIRLINES	1,028	836	1,864	0.75%					
F7	I FLY LTD	1,299	38	1,337	0.54%					
GTI	ATLAS AIR	980	271	1,250	0.50%	1,936	287	2,223	1.36%	-43.76%
UA	UNITED AIRLINES	456	606	1,062	0.43%					
6H	ISRAIR AIRLINES	489	377	866	0.35%					
VS	VIRGIN ATLANTIC AIRWAYS	345	270	615	0.24%					
AC	AIR CANADA	183	372	556	0.22%					
PC	PEGASUS AIRLINES	265	121	387	0.15%					







# Accumulated Cargo Handling on Cargo Aircrafts

## Distribution by Airline

		Accumulated 2020				Accumulated 2019				
Airline		Incoming Cargo (Ton)	Outgoing Cargo (Ton)	Cargo (Ton)	Rate of Total	Incoming Cargo (Ton)	Outgoing Cargo (Ton)	Cargo (Ton)	Rate of Total	Rate of Change
ADB	ANTONOV AIRLINES	348		348	0.14%	290	163	453	0.27%	-23.17%
KE	KOREAN AIR	127	192	319	0.12%	55	54	109	0.06%	192.66%
ABD	ATLANTA ICELANDIC	246	66	312	0.12%					
	OTHERS	1,150	621	1,770	0.71%	2,459	1,948	4,407	2.71%	-59.83%
	<b>TOTAL</b>	<b>156,933</b>	<b>89,640</b>	<b>246,573</b>		<b>97,845</b>	<b>64,752</b>	<b>162,596</b>		<b>51.64%</b>





# Accumulated Cargo Handling on Cargo Aircrafts

## Distribution by Countries

Countries	Accumulated 2020				Accumulated 2019				
	Incoming Cargo (Ton)	Outgoing Cargo (Ton)	Cargo (Ton)	Rate of Total	Incoming Cargo (Ton)	Outgoing Cargo (Ton)	Cargo (Ton)	Rate of Total	Rate of Change
BELGIUM	37,772	39,543	77,314	31.35%	33,078	32,397	65,476	40.26%	18.07%
GERMANY	28,586	14,265	42,851	17.37%	24,732	10,290	35,022	21.53%	22.35%
TURKEY	27,197	10,294	37,491	15.20%	13,219	11,833	25,052	15.40%	49.65%
CHINA	20,352	3,449	23,801	9.65%					
AZERBAIJAN	8,712	8,547	17,259	6.99%	4,992	6,317	11,309	6.95%	52.61%
NORWAY	10,892		10,892	4.41%	9,880		9,880	6.07%	10.24%
CYPRUS	7,741	657	8,398	3.40%	7,994	18	8,011	4.92%	4.83%
UNITED KINGDOM	3,588	2,966	6,554	2.65%		106	107	0.06%	
UNITED STATES	2,943	2,692	5,636	2.28%	350	61	411	0.25%	
FRANCE	1,383	2,472	3,855	1.56%	1,005	1,152	2,157	1.32%	78.72%
RUSSIAN FEDERATION	2,368	1,097	3,465	1.40%	61	47	108	0.06%	
SPAIN	1,531	513	2,044	0.82%	1,878	14	1,892	1.16%	8.03%
AUSTRIA	465	646	1,111	0.45%	277	1,439	1,716	1.05%	-35.25%
SWITZERLAND	770	139	910	0.36%	214	191	405	0.24%	124.69%
EGYPT	8	892	900	0.36%	6	65	71	0.04%	
INDIA	419	204	623	0.25%					
CANADA	184	390	575	0.23%					
ITALY	406	125	531	0.21%	50	60	109	0.06%	
SOUTH KOREA	118	235	353	0.14%		54	54	0.03%	
NETHERLANDS	188	110	299	0.12%					
DOMINICAN REPUBLIC	255	30	285	0.11%					
PORTUGAL	249	5	255	0.10%					





# Accumulated Cargo Handling on Cargo Aircrafts

## Distribution by Countries

Countries	Accumulated 2020				Accumulated 2019				
	Incoming Cargo (Ton)	Outgoing Cargo (Ton)	Cargo (Ton)	Rate of Total	Incoming Cargo (Ton)	Outgoing Cargo (Ton)	Cargo (Ton)	Rate of Total	Rate of Change
OTHERS	804	368	1,172	0.47%	109	706	815	0.50%	43.80%
TOTAL	156,933	89,640	246,573		97,845	64,752	162,596		51.64%



# Domestic Activity

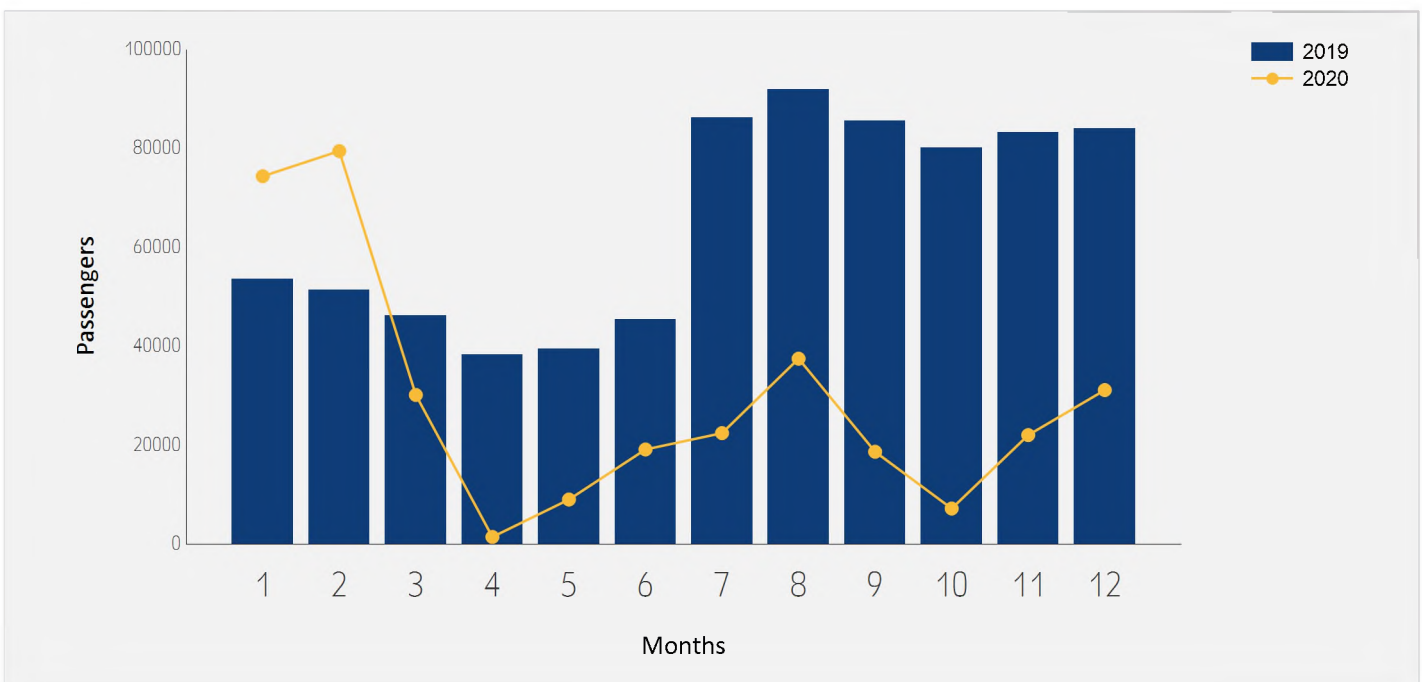




# Domestic Passenger Traffic

## Distribution by Months

Month	2020	2019	Rate of Change
January	74,380	53,612	38.73%
February	79,475	51,365	54.72%
March	30,137	46,249	-34.83%
April	1,412	38,319	-96.31%
May	8,989	39,474	-77.22%
June	19,115	45,482	-57.97%
July	22,417	86,240	-74.00%
August	37,477	91,905	-59.22%
September	18,645	85,565	-78.20%
October	7,164	80,159	-91.06%
November	22,021	83,269	-73.55%
December	31,122	84,088	-62.98%
<b>Total</b>	<b>352,354</b>	<b>785,727</b>	<b>-55.15%</b>

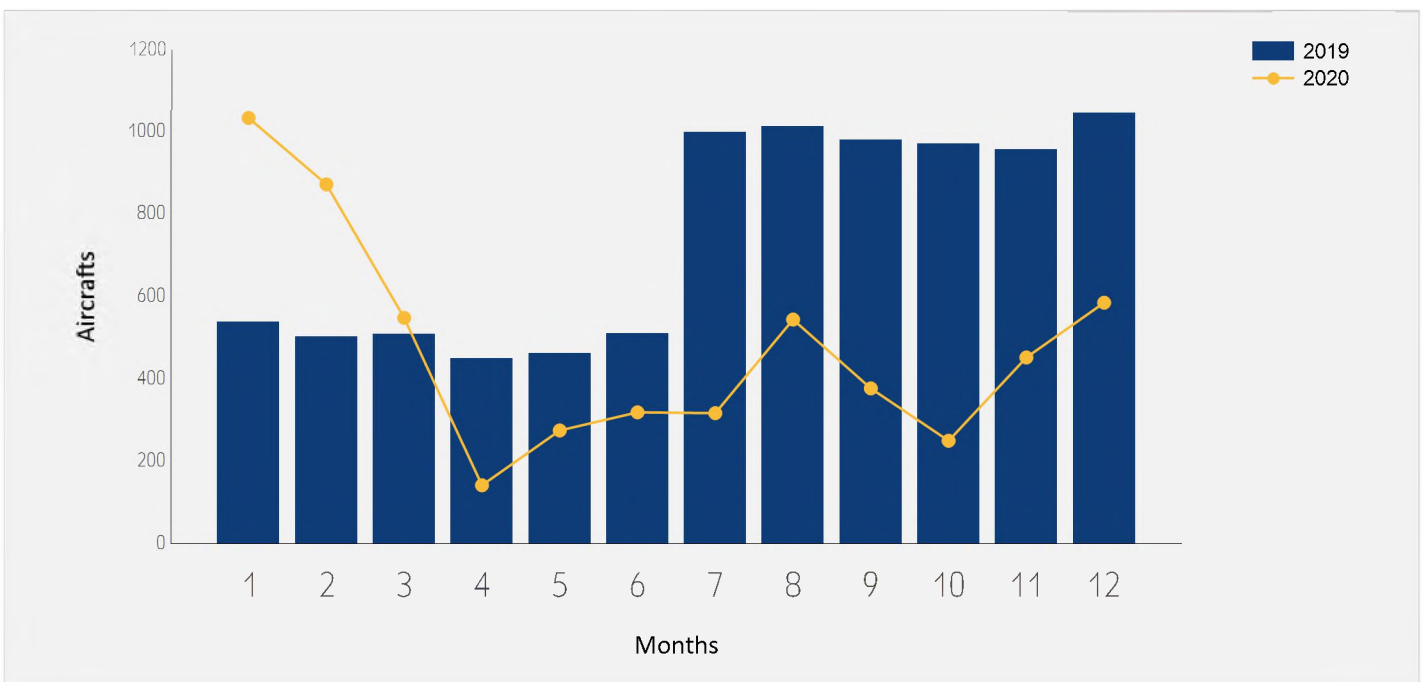




# Domestic Aircrafts Traffic

## Distribution by Months

Month	2020	2019	Rate of Change
January	1,032	537	92.17%
February	871	501	73.85%
March	547	507	7.88%
April	141	448	-68.52%
May	274	461	-40.56%
June	318	510	-37.64%
July	316	997	-68.30%
August	543	1,012	-46.34%
September	376	979	-61.59%
October	249	970	-74.32%
November	451	956	-52.82%
December	584	1,044	-44.06%
<b>Total</b>	<b>5,702</b>	<b>8,922</b>	<b>-36.09%</b>





# Accumulated Domestic Passengers Traffic

## Distribution by Airlines

		Accumulated 2020		Accumulated 2019		
Airline		Passengers	Rate of Total	Passengers	Rate of Total	Rate of Change
6H	ISR AIR AIRLINES	188,068	53.37%	215,579	27.43%	-12.76%
IZ	ARKIA ISRAELI AIRLINES	163,724	46.46%	567,201	72.18%	-71.13%
	OTHERS	562	0.15%	2,947	0.37%	-80.92%
	<b>TOTAL</b>	<b>352,354</b>		<b>785,727</b>		<b>-55.15%</b>

## Distribution by Destinations

		Accumulated 2020		Accumulated 2019		
Destination		Passengers	Rate of Total	Passengers	Rate of Total	Rate of Change
	RAMON	350,854	99.57%	775,386	98.68%	-54.75%
	OTHERS	1,500	0.42%	10,341	1.31%	-85.49%
	<b>TOTAL</b>	<b>352,354</b>		<b>785,727</b>		<b>-55.15%</b>

