



Monthly Report

Ben Gurion International Airport

September 2024



Israel Airport Authority

Ben Gurion International Airport

Produced by the Industry & Management Department

This report is protected by copyright and is the exclusive property of the Israel Airports Authority.

It must be emphasized that the data in the report are based on the reports of the airlines, and received under their responsibility.

The information is intended for personal use, and therefore may not be quoted or passed on to any third party without written permission from the Israel Airports Authority.

In addition, no commercial use may be made of this report.

Edit Yehoshua

Activity Coordinator

Tel. +972-3-9752017

Email: edity@iaa.gov.il

Rachel Lehava

Manager, Industrial & Management Dep.

Tel. +972-3-9752019

Email: rachelle@iaa.gov.il

Dimitry Shumacher

Head, Industrial & Management Dep.

Tel. +972-3-9752661

Email: dimitrysh@iaa.gov.il



Dear friends and partners,

I hereby respectfully submit for your review a report summarizing the aviation activity at Ben - Gurion International Airport in September 2024.

During the month, a total of 1,548,406 passengers on 11,361 international and domestic flights passed through Ben- Gurion Airport.

International passenger traffic in September totaled 1,491,529 passengers representing a decrease of 35.2% compared to September 2023.

International aircraft traffic totaled 10,770 flights, representing a decrease of 29.69% compared to September 2023.

International passenger traffic at Terminal 3 this month totaled 1,333,792 passengers. Passengers on International flights from Terminal 1, serving departing passengers only, totaled 157,737.

On domestic flights 56,877 passengers passed through Ben- Gurion Airport this month, compared with 70,374 in September 2023, a decrease of 19.17%.

Israeli airlines carried 974,618 passengers in this month, 65.34% of all travelers passing through Ben - Gurion Airport, an increase of 38.82% relative to the previous September.

The airlines which contributed the most to the increase of passenger traffic this month are: EL AL ISRAEL AIRLINES, ISRAIR AIRLINES and ARKIA ISRAELI AIRLINES.

The Destination with the highest volume of activity was ATHENS with a total of 104,066 passengers to and from, an increase of 26.42% compared to the previous September.

The country with the highest volume of activity was GREECE, with 239,210 passengers, constituting 16.03% of all activity.

The countries with the highest volume of activity this month are: GREECE, CYPRUS and UNITED STATES.

Cargo transportation this month stood at 29,336 tons and reflects an increase of 2.47% compared to September 2023. 8,799 tons were transported in passenger aircraft and 20,537 tons in cargo aircraft.

Below you will find additional tables providing details about movements of aircraft, passengers and cargo at Ben - Gurion International Airport.

*The Data is displayed according to actual UTC time.

Sincerely yours,

Udi Bar Oz

Managing Director,
Ben-Gurion International Airport



Content



Aviation Activity

Aviation Activity Summary	1
International Activity Summary	2 - 4
Domestic Activity Summary	5



International Activity

Distribution By Months	7 - 8
Distribution By Airlines	9 - 15
Distribution By Countries	16 - 21
Distribution By First Destination	22 - 33



Cargo Activity

Distribution by Transporter	35
Distribution By Months	35
Distribution By Airlines	36 - 42
Distribution By Countries	43 - 45



Domestic Activity

Distribution By Months	47 - 48
Distribution By Airlines	49
Distribution By Destinations	50





Passengers and Aircrafts

Aviation Activity at Ben Gurion International Airport

International Activity

	Current Month			Accumulated Since the beginning of the year		
	September 2024	September 2023	Rate Of Change	2024	2023	Rate Of Change
Incoming Aircrafts	5,377	7,668	-29.87%	39,199	63,871	-38.62%
Outgoing Aircrafts	5,393	7,650	-29.50%	39,226	63,857	-38.57%
Total Aircrafts	10,770	15,318	-29.69%	78,425	127,728	-38.59%
Incoming Passengers	753,850	1,130,535	-33.31%	5,373,517	9,422,294	-42.97%
Outgoing Passengers	737,679	1,171,348	-37.02%	5,478,406	9,590,476	-42.87%
Transit Passengers	166	680	-75.58%	2,302	2,433	-5.38%
Total Passengers	1,491,529	2,301,883	-35.20%	10,851,923	19,012,770	-42.92%

Domestic Activity

	Current Month			Accumulated Since the beginning of the year		
	September 2024	September 2023	Rate Of Change	2024	2023	Rate Of Change
Aircrafts	591	637	-7.22%	4,738	6,069	-21.93%
Passengers	56,877	70,374	-19.17%	491,255	646,577	-24.02%

International and Domestic Activity Summary

	Current Month			Accumulated Since the beginning of the year		
	September 2024	September 2023	Rate Of Change	2024	2023	Rate Of Change
Aircrafts	11,361	15,955	-28.79%	83,163	133,797	-37.84%
Passengers	1,548,406	2,372,257	-34.72%	11,343,178	19,659,347	-42.30%





Passengers and Aircrafts

Int'l Aviation Activity at Ben Gurion International Airport by Terminal

Terminal 3

	Current Month			Accumulated Since the beginning of the year		
	September 2024	September 2023	Rate of Change	2024	2023	Rate of Change
Incoming Aircrafts	5,377	7,668	-29.87%	39,199	63,871	-38.62%
Outgoing Aircrafts	4,436	5,948	-25.42%	35,470	50,044	-29.12%
Total Aircrafts	9,813	13,616	-27.93%	74,669	113,915	-34.45%
Incoming Passengers	753,850	1,130,535	-33.31%	5,373,517	9,422,294	-42.97%
Outgoing Passengers	579,942	871,339	-33.44%	4,828,690	7,222,258	-33.14%
Transit Passengers	166	680	-75.58%	2,302	2,433	-5.38%
Total Passengers	1,333,792	2,001,874	-33.37%	10,202,207	16,644,552	-38.70%

Terminal 1

	Current Month			Accumulated Since the beginning of the year		
	September 2024	September 2023	Rate of Change	2024	2023	Rate of Change
Incoming Aircrafts						
Outgoing Aircrafts	957	1,702	-43.77%	3,756	13,813	-72.80%
Total Aircrafts	957	1,702	-43.77%	3,756	13,813	-72.80%
Incoming Passengers						
Outgoing Passengers	157,737	300,009	-47.42%	649,716	2,368,218	-72.56%
Total Passengers	157,737	300,009	-47.42%	649,716	2,368,218	-72.56%





Passengers and Aircrafts

Int'l Aviation Activity at Ben Gurion International Airport by Flight Type

Schedule and Charter Flights

	Current Month			Accumulated Since the beginning of the year		
	September 2024	September 2023	Rate of Change	2024	2023	Rate of Change
Incoming Aircrafts	4,647	6,993	-33.54%	32,965	57,970	-43.13%
Outgoing Aircrafts	4,682	6,989	-33.00%	33,212	57,977	-42.71%
Total Aircrafts	9,329	13,982	-33.27%	66,177	115,947	-42.92%
Incoming Passengers	752,453	1,128,904	-33.34%	5,363,028	9,408,833	-43.00%
Outgoing Passengers	736,505	1,169,768	-37.03%	5,467,923	9,577,340	-42.90%
Transit Passengers	166	680	-75.58%	2,302	2,433	-5.38%
Total Passengers	1,488,958	2,298,672	-35.22%	10,830,951	18,986,173	-42.95%

Private Flights

	Current Month			Accumulated Since the beginning of the year		
	September 2024	September 2023	Rate of Change	2024	2023	Rate of Change
Incoming Aircrafts	316	394	-19.79%	2,750	3,300	-16.66%
Outgoing Aircrafts	318	386	-17.61%	2,751	3,281	-16.15%
Total Aircrafts	634	780	-18.71%	5,501	6,581	-16.41%
Incoming Passengers	1,056	1,299	-18.70%	8,308	10,728	-22.55%
Outgoing Passengers	914	1,318	-30.65%	8,385	10,721	-21.78%
Total Passengers	1,970	2,617	-24.72%	16,693	21,449	-22.17%





Passengers and Aircrafts

Int'l Aviation Activity at Ben Gurion International Airport by Flight Type

Cargo Flights

	Current Month			Accumulated Since the beginning of the year		
	September 2024	September 2023	Rate of Change	2024	2023	Rate of Change
Incoming Aircrafts	374	256	46.09%	3,129	2,374	31.80%
Outgoing Aircrafts	351	250	40.40%	2,885	2,350	22.76%
Total Aircrafts	725	506	43.28%	6,014	4,724	27.30%
Incoming Passengers	50	10		221	132	67.42%
Outgoing Passengers	26	15	73.33%	252	204	23.52%
Total Passengers	76	25		473	336	40.77%

Other Flights

	Current Month			Accumulated Since the beginning of the year		
	September 2024	September 2023	Rate of Change	2024	2023	Rate of Change
Incoming Aircrafts	40	25	60.00%	355	227	56.38%
Outgoing Aircrafts	42	25	68.00%	378	249	51.80%
Total Aircrafts	82	50	64.00%	733	476	53.99%
Incoming Passengers	291	322	-9.62%	1,960	2,601	-24.64%
Outgoing Passengers	234	247	-5.26%	1,846	2,211	-16.50%
Total Passengers	525	569	-7.73%	3,806	4,812	-20.90%





Passengers and Aircrafts

Domestic Aviation Activity at Ben Gurion International Airport by Flight Type

Schedule Flights

	Current Month			Accumulated Since the beginning of the year		
	September 2024	September 2023	Rate of Change	2024	2023	Rate of Change
Aircrafts	491	578	-15.05%	3,944	5,424	-27.28%
Passengers	56,372	69,978	-19.44%	489,177	643,987	-24.03%

Private Flights

	Current Month			Accumulated Since the beginning of the year		
	September 2024	September 2023	Rate of Change	2024	2023	Rate of Change
Aircrafts	28	18	55.55%	260	208	25.00%
Passengers	62	4		212	213	-0.46%

Other Flights

	Current Month			Accumulated Since the beginning of the year		
	September 2024	September 2023	Rate of Change	2024	2023	Rate of Change
Aircrafts	72	41	75.60%	534	437	22.19%
Passengers	443	392	13.01%	1,866	2,377	-21.49%



International Activity

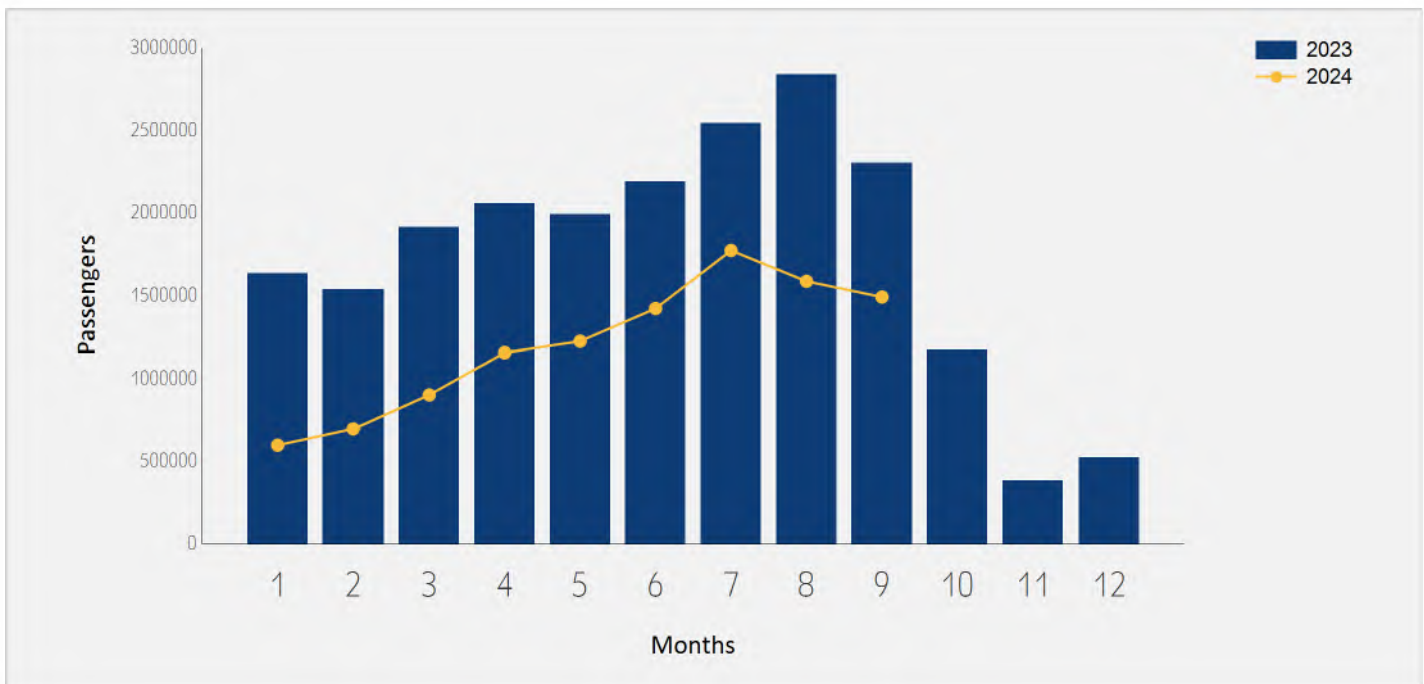




International Passenger Traffic

Distribution by Months

Months	2024	2023	Rate of Change
January	597,830	1,633,082	-63.39%
February	696,680	1,537,845	-54.69%
March	902,230	1,913,526	-52.84%
April	1,156,496	2,058,600	-43.82%
May	1,224,931	1,993,148	-38.54%
June	1,422,247	2,191,868	-35.11%
July	1,773,385	2,544,795	-30.31%
August	1,586,595	2,838,023	-44.09%
September	1,491,529	2,301,883	-35.20%
Total	10,851,923	19,012,770	-42.92%

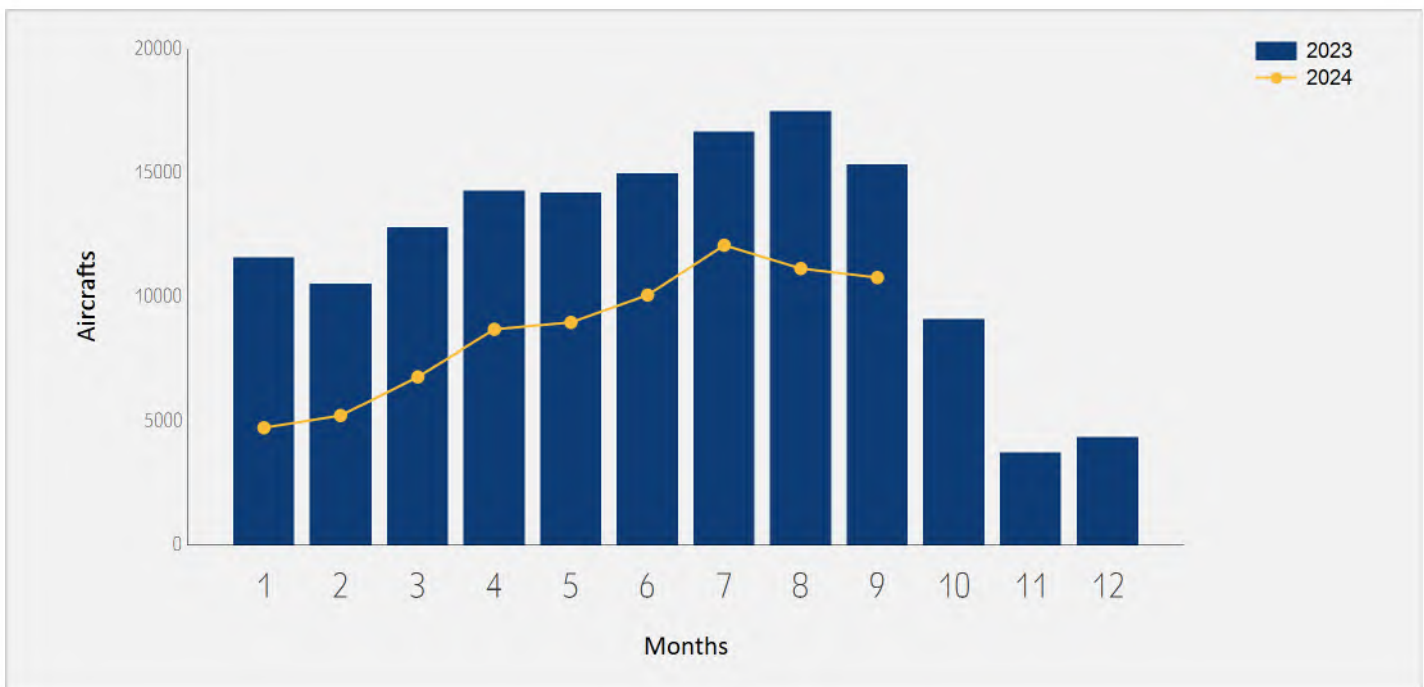




International Aircraft Traffic

Distribution by Months

Months	2024	2023	Rate of Change
January	4,732	11,574	-59.11%
February	5,225	10,497	-50.22%
March	6,781	12,792	-46.99%
April	8,682	14,275	-39.18%
May	8,960	14,182	-36.82%
June	10,063	14,961	-32.73%
July	12,076	16,639	-27.42%
August	11,136	17,490	-36.32%
September	10,770	15,318	-29.69%
Total	78,425	127,728	-38.59%





International Passenger Traffic

Distribution by Airline for September

		September 2024		September 2023		
Airline		Passengers	Rate of Total	Passengers	Rate of Total	Rate of Change
LY	EL AL ISRAEL AIRLINES	651,084	43.65%	484,896	21.06%	34.27%
6H	ISRAIR AIRLINES	192,764	12.92%	125,095	5.43%	54.09%
IZ	ARKIA ISRAELI AIRLINES	124,966	8.37%	87,854	3.81%	42.24%
W6	WIZZAIR	109,477	7.33%	227,347	9.87%	-51.84%
FZ	FLYDUBAI	59,685	4.00%	25,003	1.08%	138.71%
BZ	BLUE BIRD AIRWAYS	44,173	2.96%	64,047	2.78%	-31.03%
A3	AEGEAN AIRLINES	26,589	1.78%	48,692	2.11%	-45.39%
U8	TUS AIRWAYS	22,934	1.53%	22,799	0.99%	0.59%
ET	ETHIOPIAN AIRLINES	17,044	1.14%	13,062	0.56%	30.48%
XR	CORENDON EUROPE	16,883	1.13%	6,349	0.27%	165.91%
UX	AIR EUROPA	14,830	0.99%	13,431	0.58%	10.41%
AF	AIR FRANCE	12,772	0.85%	25,813	1.12%	-50.52%
EY	ETIHAD AIRWAYS	11,284	0.75%	12,305	0.53%	-8.29%
QS	SMARTWINGS	10,945	0.73%	12,003	0.52%	-8.81%
WZ	RED WINGS AIRLINES	10,034	0.67%	6,148	0.26%	63.20%
NO	NEOS	9,612	0.64%	12,160	0.52%	-20.95%
TO	TRANSAVIA FRANCE	9,555	0.64%	28,322	1.23%	-66.26%
LH	LUFTHANSA	9,549	0.64%	49,043	2.13%	-80.52%
J2	AZERBAIJAN AIRLINES	9,019	0.60%	7,677	0.33%	17.48%
OS	AUSTRIAN AIRLINES	8,355	0.56%	24,246	1.05%	-65.54%
G2	GULLIVAIR	7,884	0.52%			





International Passenger Traffic

Distribution by Airline for September

		September 2024		September 2023		
Airline		Passengers	Rate of Total	Passengers	Rate of Total	Rate of Change
BA	BRITISH AIRWAYS PLC	7,641	0.51%	25,792	1.12%	-70.37%
H7	HISKY	7,638	0.51%	8,420	0.36%	-9.28%
I2	IBERIA EXPRESS	7,571	0.50%	22,431	0.97%	-66.24%
LO	LOT POLISH AIRLINES	7,298	0.48%	25,231	1.09%	-71.07%
HY	UZBEKISTAN AIR	7,136	0.47%	4,914	0.21%	45.21%
H4	HISKY EUROPE SRL	6,899	0.46%	10,496	0.45%	-34.27%
CY	CYPRUS AIRWAYS	5,836	0.39%	7,165	0.31%	-18.54%
RO	TAROM - ROMANIAN AIR TRAN	5,395	0.36%	6,815	0.29%	-20.83%
5F	FLYONE	5,303	0.35%	4,198	0.18%	26.32%
OE	FLYONE ROMANIA	5,229	0.35%			
LX	SWISS INT'L AIRLINES	5,127	0.34%	16,311	0.70%	-68.56%
A4	AZIMUTH AIRLINES	5,017	0.33%	7,729	0.33%	-35.08%
AZ	ITALIA TRASPORTO AEREO	4,983	0.33%	23,642	1.02%	-78.92%
FB	BULGARIA AIR	4,761	0.31%	7,046	0.30%	-32.42%
LV	AIRZENA	3,553	0.23%			
HU	HAINAN AIRLINES	3,064	0.20%	4,448	0.19%	-31.11%
E8	BEES AIRLINES ROMANIA	2,772	0.18%			
A9	GEORGIAN AIRWAYS	1,670	0.11%	8,293	0.36%	-79.86%
SN	BRUSSELS AIRLINES	1,402	0.09%	14,685	0.63%	-90.45%
EW	EUROWINGS	1,236	0.08%			
BT	AIR BALTIC	1,184	0.07%	3,438	0.14%	-65.56%





International Passenger Traffic

Distribution by Airline for September

		September 2024		September 2023		
Airline		Passengers	Rate of Total	Passengers	Rate of Total	Rate of Change
HH	QANOT SHARQ	1,114	0.07%	1,257	0.05%	-11.37%
HM	AIR SEYCHELLES	938	0.06%	2,971	0.12%	-68.42%
DIR	AERRO DIREKT S.R.L	703	0.04%			
BUC	EUROPEAN AIR CHARTER	547	0.03%	2,075	0.09%	-73.63%
U5	SKYUP MALTA	377	0.02%			
	OTHERS	7,697	0.51%	798,234	34.67%	-99.03%
	TOTAL	1,491,529		2,301,883		-35.20%





Int'l Accumulated Passenger Traffic

Distribution by Airline

		Accumulated 2024		Accumulated 2023		
Airline		Passengers	Rate of Total	Passengers	Rate of Total	Rate of Change
LY	EL AL ISRAEL AIRLINES	5,002,342	46.09%	4,314,432	22.69%	15.94%
6H	ISRAIR AIRLINES	1,044,131	9.62%	837,353	4.40%	24.69%
IZ	ARKIA ISRAELI AIRLINES	734,010	6.76%	637,947	3.35%	15.05%
W6	WIZZAIR	637,793	5.87%	1,951,721	10.26%	-67.32%
BZ	BLUE BIRD AIRWAYS	433,282	3.99%	392,938	2.06%	10.26%
FZ	FLYDUBAI	390,918	3.60%	243,084	1.27%	60.81%
A3	AEGEAN AIRLINES	241,166	2.22%	356,062	1.87%	-32.26%
LH	LUFTHANSA	150,588	1.38%	429,520	2.25%	-64.94%
U8	TUS AIRWAYS	149,330	1.37%	164,320	0.86%	-9.12%
OS	AUSTRIAN AIRLINES	132,573	1.22%	207,323	1.09%	-36.05%
ET	ETHIOPIAN AIRLINES	121,653	1.12%	115,678	0.60%	5.16%
XR	CORENDON EUROPE	120,810	1.11%	32,105	0.16%	
AF	AIR FRANCE	118,640	1.09%	252,693	1.32%	-53.04%
UX	AIR EUROPA	84,058	0.77%	134,228	0.70%	-37.37%
WZ	RED WINGS AIRLINES	80,373	0.74%	48,711	0.25%	64.99%
QS	SMARTWINGS	79,833	0.73%	76,350	0.40%	4.56%
UA	UNITED AIRLINES	79,425	0.73%	591,722	3.11%	-86.57%
TO	TRANSAVIA FRANCE	77,606	0.71%	254,510	1.33%	-69.50%
FR	RYANAIR	77,057	0.71%	1,121,528	5.89%	-93.12%
LX	SWISS INT'L AIRLINES	75,546	0.69%	167,853	0.88%	-54.99%
LO	LOT POLISH AIRLINES	72,584	0.66%	212,478	1.11%	-65.83%





Int'l Accumulated Passenger Traffic

Distribution by Airline

		Accumulated 2024		Accumulated 2023		
Airline		Passengers	Rate of Total	Passengers	Rate of Total	Rate of Change
J2	AZERBAIJAN AIRLINES	64,150	0.59%	55,095	0.28%	16.43%
EY	ETIHAD AIRWAYS	60,594	0.55%	88,980	0.46%	-31.90%
AZ	ITALIA TRASPORTO AEREO	58,924	0.54%	177,001	0.93%	-66.70%
NO	NEOS	54,781	0.50%	70,069	0.36%	-21.81%
H7	HISKY	48,278	0.44%	44,604	0.23%	8.23%
A4	AZIMUTH AIRLINES	48,169	0.44%	57,727	0.30%	-16.55%
BA	BRITISH AIRWAYS PLC	45,896	0.42%	226,996	1.19%	-79.78%
I2	IBERIA EXPRESS	43,741	0.40%	145,547	0.76%	-69.94%
FB	BULGARIA AIR	42,147	0.38%	54,309	0.28%	-22.39%
HY	UZBEKISTAN AIR	35,290	0.32%	35,945	0.18%	-1.82%
RO	TAROM - ROMANIAN AIR TRAN	34,202	0.31%	55,919	0.29%	-38.83%
LV	AIRZENA	34,087	0.31%			
CY	CYPRUS AIRWAYS	31,894	0.29%	68,233	0.35%	-53.25%
AI	AIR INDIA	31,254	0.28%	62,012	0.32%	-49.60%
H4	HISKY EUROPE SRL	31,243	0.28%	66,151	0.34%	-52.77%
5F	FLYONE	30,065	0.27%	22,962	0.12%	30.93%
G2	GULLIVAIR	29,747	0.27%			
DL	DELTA AIRLINES	28,858	0.26%	283,153	1.48%	-89.80%
SN	BRUSSELS AIRLINES	23,739	0.21%	136,104	0.71%	-82.55%
KL	K.L.M.	23,619	0.21%	113,379	0.59%	-79.16%
HU	HAINAN AIRLINES	21,525	0.19%	32,992	0.17%	-34.75%





Int'l Accumulated Passenger Traffic

Distribution by Airline

		Accumulated 2024		Accumulated 2023		
Airline		Passengers	Rate of Total	Passengers	Rate of Total	Rate of Change
EW	EUROWINGS	15,414	0.14%			
EZY	EASYJET	10,361	0.09%	641,504	3.37%	-98.38%
BT	AIR BALTIC	9,750	0.08%	26,197	0.13%	-62.78%
HM	AIR SEYCHELLES	9,542	0.08%	19,603	0.10%	-51.32%
VY	VUELING AIRLINES S.A.	7,434	0.06%	70,128	0.36%	-89.39%
HH	QANOT SHARQ	6,169	0.05%	5,784	0.03%	6.65%
OU	CROATIA AIR	5,640	0.05%	13,858	0.07%	-59.30%
OE	FLYONE ROMANIA	5,229	0.04%			
BUC	EUROPEAN AIR CHARTER	4,030	0.03%	19,523	0.10%	-79.35%
E8	BEES AIRLINES ROMANIA	2,989	0.02%			
	OTHERS	49,444	0.45%	3,876,439	20.38%	-98.72%
	TOTAL	10,851,923		19,012,770		-42.92%





International Passenger Traffic

Distribution by Israeli Airlines for September

		September 2024		September 2023		
Airlines		Passengers	Rate of Total	Passengers	Rate of Total	Rate of Change
LY	EL AL ISRAEL AIRLINES	651,084	43.65%	484,896	21.06%	34.27%
6H	ISRAIR AIRLINES	192,764	12.92%	125,095	5.43%	54.09%
IZ	ARKIA ISRAELI AIRLINES	124,966	8.37%	87,854	3.81%	42.24%
	OTHERS	5,804	0.38%	4,203	0.18%	38.09%
	TOTAL	974,618	65.34%	702,048	30.49%	38.82%

Int'l Accumulated Passenger Traffic

Distribution by Israeli Airlines

		Accumulated 2024		Accumulated 2023		
Airlines		Passengers	Rate of Total	Passengers	Rate of Total	Rate of Change
LY	EL AL ISRAEL AIRLINES	5,002,342	46.09%	4,314,432	22.69%	15.94%
6H	ISRAIR AIRLINES	1,044,131	9.62%	837,353	4.40%	24.69%
IZ	ARKIA ISRAELI AIRLINES	734,010	6.76%	637,947	3.35%	15.05%
	OTHERS	19,073	0.17%	23,023	0.12%	-17.15%
	TOTAL	6,799,556	62.65%	5,812,755	30.57%	16.97%





International Passenger Traffic

Distribution by Countries for September

Countries	September 2024		September 2023		
	Passengers	Rate of Total	Passengers	Total of Rate	Rate of Change
GREECE	239,210	16.03%	254,407	11.05%	-5.97%
CYPRUS	132,677	8.89%	118,727	5.15%	11.74%
UNITED STATES	110,890	7.43%	178,532	7.75%	-37.88%
ITALY	95,463	6.40%	164,473	7.14%	-41.95%
FRANCE	86,499	5.79%	110,087	4.78%	-21.42%
UNITED ARAB EMIRATES	85,449	5.72%	104,275	4.52%	-18.05%
GEORGIA	74,573	4.99%	52,344	2.27%	42.46%
SPAIN	67,432	4.52%	86,810	3.77%	-22.32%
UNITED KINGDOM	63,996	4.29%	117,115	5.08%	-45.35%
ROMANIA	62,627	4.19%	63,581	2.76%	-1.50%
GERMANY	47,920	3.21%	101,045	4.38%	-52.57%
HUNGARY	46,134	3.09%	54,051	2.34%	-14.64%
BULGARIA	40,374	2.70%	46,096	2.00%	-12.41%
POLAND	39,582	2.65%	56,451	2.45%	-29.88%
AUSTRIA	35,258	2.36%	60,675	2.63%	-41.89%
CZECH REPUBLIC	33,711	2.26%	24,232	1.05%	39.11%
THAILAND	32,005	2.14%	22,593	0.98%	41.65%
NETHERLANDS	29,051	1.94%	50,161	2.17%	-42.08%
RUSSIAN FEDERATION	25,202	1.68%	22,327	0.96%	12.87%
MONTENEGRO	24,535	1.64%	16,432	0.71%	49.31%
SWITZERLAND	18,944	1.27%	34,621	1.50%	-45.28%
ETHIOPIA	17,044	1.14%	12,797	0.55%	33.18%





International Passenger Traffic

Distribution by Countries for September

Countries	September 2024		September 2023		
	Passengers	Rate of Total	Passengers	Total of Rate	Rate of Change
MOLDOVA	16,778	1.12%	38,047	1.65%	-55.90%
PORTUGAL	15,253	1.02%	21,024	0.91%	-27.44%
AZERBAIJAN	12,596	0.84%	11,213	0.48%	12.33%
UZBEKISTAN	8,250	0.55%	6,171	0.26%	33.68%
SERBIA	4,823	0.32%	4,402	0.19%	9.56%
JAPAN	4,687	0.31%	3,624	0.15%	29.33%
LITHUANIA	3,774	0.25%	6,564	0.28%	-42.50%
SLOVENIA	3,271	0.21%	5,110	0.22%	-35.98%
CHINA	3,085	0.20%	11,802	0.51%	-73.86%
CROATIA	2,560	0.17%	5,290	0.22%	-51.60%
ARMENIA	1,732	0.11%	1,731	0.07%	0.05%
BELGIUM	1,452	0.09%	20,908	0.90%	-93.05%
TANZANIA	1,327	0.08%	3,024	0.13%	-56.11%
LATVIA	1,184	0.07%	3,438	0.14%	-65.56%
BOSNIA	847	0.05%			
SLOVAKIA	532	0.03%	2,029	0.08%	-73.78%
SEYCHELLES	444	0.02%	2,853	0.12%	-84.43%
OTHERS	358	0.02%	402,821	17.49%	-99.91%
TOTAL	1,491,529		2,301,883		-35.20%





Int'l Accumulated Passenger Traffic

Distribution by Countries

Countries	Accumulated 2024		Accumulated 2023		
	Passengers	Rate of Total	Passengers	Rate of Total	Rate of Change
GREECE	1,495,061	13.77%	1,544,252	8.12%	-3.18%
UNITED STATES	1,030,231	9.49%	1,725,950	9.07%	-40.30%
CYPRUS	842,640	7.76%	831,688	4.37%	1.31%
FRANCE	703,741	6.48%	1,073,809	5.64%	-34.46%
ITALY	659,768	6.07%	1,356,128	7.13%	-51.34%
UNITED ARAB EMIRATES	590,725	5.44%	1,033,120	5.43%	-42.82%
GEORGIA	515,417	4.74%	438,136	2.30%	17.63%
UNITED KINGDOM	490,058	4.51%	1,093,062	5.74%	-55.16%
GERMANY	487,972	4.49%	910,564	4.78%	-46.40%
SPAIN	460,688	4.24%	807,298	4.24%	-42.93%
HUNGARY	345,772	3.18%	530,365	2.78%	-34.80%
ROMANIA	341,673	3.14%	537,267	2.82%	-36.40%
AUSTRIA	290,196	2.67%	518,312	2.72%	-44.01%
POLAND	289,093	2.66%	494,220	2.59%	-41.50%
CZECH REPUBLIC	281,824	2.59%	217,548	1.14%	29.54%
BULGARIA	279,815	2.57%	404,390	2.12%	-30.80%
THAILAND	258,752	2.38%	214,455	1.12%	20.65%
SWITZERLAND	231,303	2.13%	366,895	1.92%	-36.95%
NETHERLANDS	220,569	2.03%	435,435	2.29%	-49.34%
RUSSIAN FEDERATION	208,050	1.91%	204,144	1.07%	1.91%
MOLDOVA	133,484	1.23%	113,358	0.59%	17.75%
ETHIOPIA	120,916	1.11%	113,371	0.59%	6.65%





Int'l Accumulated Passenger Traffic

Distribution by Countries

Countries	Accumulated 2024		Accumulated 2023		
	Passengers	Rate of Total	Passengers	Rate of Total	Rate of Change
MONTENEGRO	109,008	1.00%	86,538	0.45%	25.96%
PORTUGAL	86,485	0.79%	168,840	0.88%	-48.77%
AZERBAIJAN	84,476	0.77%	73,480	0.38%	14.96%
UZBEKISTAN	39,928	0.36%	41,864	0.22%	-4.62%
JAPAN	33,712	0.31%	27,035	0.14%	24.69%
INDIA	32,814	0.30%	63,078	0.33%	-47.97%
SERBIA	26,848	0.24%	29,411	0.15%	-8.71%
LITHUANIA	24,750	0.22%	53,978	0.28%	-54.14%
BELGIUM	24,221	0.22%	189,234	0.99%	-87.20%
CHINA	21,658	0.19%	107,671	0.56%	-79.88%
SLOVENIA	12,275	0.11%	23,215	0.12%	-47.12%
CROATIA	11,755	0.10%	32,579	0.17%	-63.91%
SEYCHELLES	10,787	0.09%	19,947	0.10%	-45.92%
LATVIA	9,763	0.08%	26,377	0.13%	-62.98%
TANZANIA	6,923	0.06%	15,112	0.07%	-54.18%
SOUTH AFRICA	5,633	0.05%	37,907	0.19%	-85.13%
ARMENIA	5,537	0.05%	16,230	0.08%	-65.88%
BOSNIA	5,313	0.04%			
FINLAND	4,931	0.04%	35,581	0.18%	-86.14%
SLOVAKIA	3,209	0.02%	6,978	0.03%	-54.01%
MALTA	3,145	0.02%	39,394	0.20%	-92.01%
NORWAY	2,534	0.02%	2,944	0.01%	-13.92%





Int'l Accumulated Passenger Traffic

Distribution by Countries

Countries	Accumulated 2024		Accumulated 2023		
	Passengers	Rate of Total	Passengers	Rate of Total	Rate of Change
SRI LANKA	2,396	0.02%	452		
OTHERS	6,074	0.05%	2,951,158	15.52%	-99.79%
TOTAL	10,851,923		19,012,770		-42.92%





International Passenger Traffic

Distribution by First Destination for September

Destination	September 2024		September 2023		
	Passengers	Rate of Total	Passengers	Rate of Total	Rate of Change
ATHENS	104,066	6.97%	82,316	3.57%	26.42%
LARNACA	101,767	6.82%	77,117	3.35%	31.96%
DUBAI	67,947	4.55%	80,793	3.50%	-15.89%
PARIS-CHARLES DE GAULLE	63,296	4.24%	66,398	2.88%	-4.67%
BUCHAREST - OTOPENI	47,581	3.19%	48,195	2.09%	-1.27%
BUDAPEST	46,092	3.09%	48,693	2.11%	-5.34%
NEW YORK - J.F.KENNEDY	44,353	2.97%	54,261	2.35%	-18.25%
ROME - FIUMICINO	43,928	2.94%	63,136	2.74%	-30.42%
RHODES-PARADISI	43,512	2.91%	50,361	2.18%	-13.59%
BATUMI	39,728	2.66%	22,914	0.99%	73.37%
LONDON - HEATHROW	38,906	2.60%	66,249	2.87%	-41.27%
MADRID	38,018	2.54%	50,950	2.21%	-25.38%
TBILISI	34,845	2.33%	29,428	1.27%	18.40%
PRAGUE-RUZYNE	33,569	2.25%	24,232	1.05%	38.53%
VIENNA	31,440	2.10%	59,731	2.59%	-47.36%
MILAN-MALPENSA	30,945	2.07%	38,011	1.65%	-18.58%
PAPHOS	30,910	2.07%	41,610	1.80%	-25.71%
HERAKLION	30,497	2.04%	51,325	2.22%	-40.58%
AMSTERDAM	29,051	1.94%	50,153	2.17%	-42.07%
BARCELONA	26,181	1.75%	33,512	1.45%	-21.87%
NEW YORK - NEWARK	25,484	1.70%	54,041	2.34%	-52.84%
BANGKOK INTL.-SUVARNA BHUM	25,172	1.68%	17,283	0.75%	45.64%





International Passenger Traffic

Distribution by First Destination for September

Destination	September 2024		September 2023		
	Passengers	Rate of Total	Passengers	Rate of Total	Rate of Change
LUTON	24,969	1.67%	38,287	1.66%	-34.78%
WARSAW	24,024	1.61%	34,602	1.50%	-30.57%
TIVAT	20,937	1.40%	10,669	0.46%	96.24%
SOFIA	20,006	1.34%	24,869	1.08%	-19.55%
THESSALONIKI	19,817	1.32%	22,780	0.98%	-13.00%
ZURICH	18,907	1.26%	25,469	1.10%	-25.76%
LOS ANGELES	17,871	1.19%	9,442	0.41%	89.27%
MOSCOW-DOMODEDOVO	17,347	1.16%	9,287	0.40%	86.78%
ADDIS ABABA	17,044	1.14%	12,797	0.55%	33.18%
ABU DHABI	16,936	1.13%	23,410	1.01%	-27.65%
CHISINAU	16,778	1.12%	38,047	1.65%	-55.90%
BERLIN BRANDENBURG INTL	15,941	1.06%	28,717	1.24%	-44.48%
MUNICH	15,932	1.06%	29,274	1.27%	-45.57%
FRANKFURT	14,536	0.97%	35,420	1.53%	-58.96%
CORFU	14,386	0.96%	10,421	0.45%	38.04%
BAKU HEYDAR ALIYEV INT'L	12,596	0.84%	11,213	0.48%	12.33%
KRAKOW	11,264	0.75%	13,692	0.59%	-17.73%
LISBON	11,089	0.74%	17,336	0.75%	-36.03%
MIAMI INTERNATIONAL	11,043	0.74%	9,342	0.40%	18.20%
VARNA	10,353	0.69%	9,016	0.39%	14.82%
BURGAS	10,015	0.67%	11,698	0.50%	-14.38%
BACAU	8,828	0.59%			





International Passenger Traffic

Distribution by First Destination for September

Destination	September 2024		September 2023		
	Passengers	Rate of Total	Passengers	Rate of Total	Rate of Change
VILLAFRANCA-VERONA	8,626	0.57%	6,607	0.28%	30.55%
PARIS-ORLY	7,999	0.53%	25,524	1.10%	-68.66%
BOSTON-LOGAN INT	7,943	0.53%	9,466	0.41%	-16.08%
SOCHI	7,364	0.49%	5,453	0.23%	35.04%
PHUKET	6,833	0.45%	5,306	0.23%	28.77%
MARSEILLE	6,713	0.45%	5,653	0.24%	18.75%
NICE	6,580	0.44%	9,426	0.40%	-30.19%
TASHKENT	6,482	0.43%	4,914	0.21%	31.90%
VENICE	5,872	0.39%	9,741	0.42%	-39.71%
MIKONOS	5,268	0.35%	10,780	0.46%	-51.13%
BELGRADE	4,823	0.32%	4,402	0.19%	9.56%
TOKYO INTL.-NARITA	4,687	0.31%	3,624	0.15%	29.33%
KATOWICE	4,294	0.28%	6,198	0.26%	-30.71%
PORTO	4,164	0.27%	2,580	0.11%	61.39%
FORT LAUDERDALE	4,110	0.27%	1,243	0.05%	
SALZBURG	3,816	0.25%	936	0.04%	
CATANIA FONTANAROSSA	3,672	0.24%	9,102	0.39%	-59.65%
SUCEAVA-ROMANIA	3,639	0.24%	624	0.02%	
PODGORICA	3,598	0.24%	5,763	0.25%	-37.56%
LJUBLJANA	3,271	0.21%	5,110	0.22%	-35.98%
KEFALLINIA	3,234	0.21%	16		
SANTORINI	3,225	0.21%	1,592	0.06%	102.57%





International Passenger Traffic

Distribution by First Destination for September

Destination	September 2024		September 2023		
	Passengers	Rate of Total	Passengers	Rate of Total	Rate of Change
VILNIUS INTL	3,100	0.20%	6,564	0.28%	-52.77%
SHENZHEN BAOAN INT.	3,064	0.20%	777	0.03%	
SITIA	2,988	0.20%			
KOS	2,838	0.19%	6,652	0.28%	-57.33%
MALAGA	2,798	0.18%	1,087	0.04%	157.40%
PATRAS ARAXOS	2,697	0.18%	2,007	0.08%	34.37%
IASI	2,576	0.17%	6,892	0.29%	-62.62%
ZADAR	2,541	0.17%			
KHANIA-SOUDABAY	2,409	0.16%	8,052	0.34%	-70.08%
NAPLES-CAPODICHINO	2,265	0.15%	18,220	0.79%	-87.56%
KARPATOS	1,949	0.13%	1,949	0.08%	
SAMARKAND	1,768	0.11%	1,257	0.05%	40.65%
YEREVAN	1,732	0.11%	1,731	0.07%	0.05%
LYON - SATOLAS	1,556	0.10%	2,798	0.12%	-44.38%
DUSSELDORF	1,464	0.09%	1,445	0.06%	1.31%
BRUSSELS	1,404	0.09%	14,871	0.64%	-90.55%
ZANZIBAR	1,319	0.08%	2,371	0.10%	-44.36%
RIGA	1,184	0.07%	3,438	0.14%	-65.56%
MITILINI	1,166	0.07%	17		
PREVEZA	1,155	0.07%	3,314	0.14%	-65.14%
SARAJEVO	847	0.05%			
KAUNAS	674	0.04%			





International Passenger Traffic

Distribution by First Destination for September

Destination	September 2024		September 2023		
	Passengers	Rate of Total	Passengers	Rate of Total	Rate of Change
DUBAI AL MAKTOUM INT AP	528	0.03%	29		
PIESTANY	518	0.03%	839	0.03%	-38.25%
ST. PETERSBURG	485	0.03%			
MAHE SEYCHELLES INTL	444	0.02%	2,853	0.12%	-84.43%
PALMA DE MALLORCA	402	0.02%	459	0.01%	-12.41%
TARBES-LOURDES	310	0.02%			
OTHERS	1,228	0.08%	543,704	23.61%	-99.77%
TOTAL	1,491,529		2,301,883		-35.20%





Int'l Accumulated Passenger Traffic

Distribution by First Destination

Destination	Accumulated 2024		Accumulated 2023		
	Passengers	Rate of Total	Passengers	Rate of Total	Rate of Change
ATHENS	736,085	6.78%	642,193	3.37%	14.62%
LARNACA	665,289	6.13%	541,275	2.84%	22.91%
PARIS-CHARLES DE GAULLE	518,674	4.77%	664,419	3.49%	-21.93%
DUBAI	493,449	4.54%	826,255	4.34%	-40.27%
NEW YORK - J.F.KENNEDY	411,626	3.79%	528,042	2.77%	-22.04%
BUDAPEST	343,757	3.16%	496,990	2.61%	-30.83%
BUCHAREST - OTOPENI	319,051	2.94%	424,161	2.23%	-24.78%
NEW YORK - NEWARK	308,808	2.84%	522,802	2.74%	-40.93%
ROME - FIUMICINO	308,805	2.84%	529,015	2.78%	-41.62%
LONDON - HEATHROW	300,337	2.76%	602,429	3.16%	-50.14%
PRAGUE-RUZYNE	280,637	2.58%	217,452	1.14%	29.05%
VIENNA	274,754	2.53%	501,825	2.63%	-45.24%
TBILISI	260,521	2.40%	242,391	1.27%	7.47%
RHODES-PARADISI	255,784	2.35%	264,829	1.39%	-3.41%
BATUMI	254,573	2.34%	194,594	1.02%	30.82%
MADRID	254,561	2.34%	456,000	2.39%	-44.17%
MILAN-MALPENSA	221,458	2.04%	323,981	1.70%	-31.64%
AMSTERDAM	220,519	2.03%	435,404	2.29%	-49.35%
HERAKLION	210,879	1.94%	252,394	1.32%	-16.44%
BANGKOK INTL.-SUARNABHUM	207,866	1.91%	160,317	0.84%	29.65%
BARCELONA	199,280	1.83%	331,426	1.74%	-39.87%
WARSAW	189,754	1.74%	294,564	1.54%	-35.58%





Int'l Accumulated Passenger Traffic

Distribution by First Destination

Destination	Accumulated 2024		Accumulated 2023		
	Passengers	Rate of Total	Passengers	Rate of Total	Rate of Change
ZURICH	185,057	1.70%	245,256	1.28%	-24.54%
PAPHOS	177,178	1.63%	290,413	1.52%	-38.99%
LUTON	176,866	1.62%	345,147	1.81%	-48.75%
FRANKFURT	168,487	1.55%	316,011	1.66%	-46.68%
MUNICH	154,749	1.42%	242,819	1.27%	-36.26%
SOFIA	141,932	1.30%	227,228	1.19%	-37.53%
BERLIN BRANDENBURG INTL	140,428	1.29%	276,643	1.45%	-49.23%
CHISINAU	133,484	1.23%	113,358	0.59%	17.75%
MOSCOW-DOMODEDOVO	132,243	1.21%	103,983	0.54%	27.17%
LOS ANGELES	128,358	1.18%	96,362	0.50%	33.20%
ADDIS ABABA	120,916	1.11%	113,371	0.59%	6.65%
MIAMI INTERNATIONAL	101,835	0.93%	128,097	0.67%	-20.50%
TIVAT	94,975	0.87%	54,294	0.28%	74.92%
ABU DHABI	94,622	0.87%	205,811	1.08%	-54.02%
THESSALONIKI	91,634	0.84%	152,320	0.80%	-39.84%
BAKU HEYDAR ALIYEV INT'L	84,476	0.77%	73,480	0.38%	14.96%
BURGAS	83,010	0.76%	89,145	0.46%	-6.88%
KRAKOW	78,418	0.72%	135,737	0.71%	-42.22%
PARIS-ORLY	76,211	0.70%	224,169	1.17%	-66.00%
LISBON	73,362	0.67%	145,988	0.76%	-49.74%
SOCHI	72,236	0.66%	37,838	0.19%	90.90%
BOSTON-LOGAN INT	58,741	0.54%	84,075	0.44%	-30.13%





Int'l Accumulated Passenger Traffic

Distribution by First Destination

Destination	Accumulated 2024		Accumulated 2023		
	Passengers	Rate of Total	Passengers	Rate of Total	Rate of Change
VARNA	54,869	0.50%	79,420	0.41%	-30.91%
CORFU	51,399	0.47%	46,984	0.24%	9.39%
PHUKET	50,848	0.46%	54,128	0.28%	-6.05%
GENEVA	45,532	0.41%	88,742	0.46%	-48.69%
VILAFRANCA-VERONA	44,056	0.40%	40,390	0.21%	9.07%
MARSEILLE	42,119	0.38%	53,256	0.28%	-20.91%
NICE	40,940	0.37%	69,396	0.36%	-41.00%
MIKONOS	35,474	0.32%	46,028	0.24%	-22.92%
VENICE	34,915	0.32%	87,927	0.46%	-60.29%
TOKYO INTL.-NARITA	33,709	0.31%	27,028	0.14%	24.71%
DELHI	32,808	0.30%	62,045	0.32%	-47.12%
TASHKENT	31,583	0.29%	36,834	0.19%	-14.25%
KOS	27,812	0.25%	31,924	0.16%	-12.88%
BELGRADE	26,848	0.24%	29,411	0.15%	-8.71%
BRUSSELS	23,892	0.22%	138,693	0.72%	-82.77%
SHENZHEN BAOAN INT.	21,525	0.19%	1,701		
VILNIUS INTL	21,222	0.19%	53,778	0.28%	-60.53%
FORT LAUDERDALE	19,657	0.18%	1,262		
DUSSELDORF	19,295	0.17%	15,971	0.08%	20.81%
CATANIA FONTANAROSSA	18,932	0.17%	55,122	0.28%	-65.65%
GRENOBLE-SAUNT GEOIRS	18,421	0.16%	28,883	0.15%	-36.22%
SANTORINI	17,196	0.15%	17,680	0.09%	-2.73%





Int'l Accumulated Passenger Traffic

Distribution by First Destination

Destination	Accumulated 2024		Accumulated 2023		
	Passengers	Rate of Total	Passengers	Rate of Total	Rate of Change
KATOWICE	15,570	0.14%	49,583	0.26%	-68.59%
PODGORICA	14,033	0.12%	32,244	0.16%	-56.47%
NAPLES-CAPODICHINO	13,164	0.12%	141,297	0.74%	-90.68%
PORTO	13,108	0.12%	21,569	0.11%	-39.22%
SALZBURG	12,729	0.11%	10,277	0.05%	23.85%
LJUBLJANA	12,275	0.11%	23,215	0.12%	-47.12%
LONDON - GATWICK	12,090	0.11%	108,500	0.57%	-88.85%
SITIA	11,508	0.10%			
KEFALLINIA	11,468	0.10%	56		
PREVEZA	11,399	0.10%	13,365	0.07%	-14.71%
MAHE SEYCHELLES INTL	10,787	0.09%	19,947	0.10%	-45.92%
BERGAMO	10,361	0.09%	85,735	0.45%	-87.91%
RIGA	9,763	0.08%	26,377	0.13%	-62.98%
KHANIA-SOUDABAY	9,729	0.08%	34,691	0.18%	-71.95%
IASI	9,039	0.08%	44,007	0.23%	-79.46%
BACAU	8,828	0.08%			
ZAGREB	8,725	0.08%	26,340	0.13%	-66.87%
PATRAS ARAXOS	8,443	0.07%	13,265	0.06%	-36.35%
SAMARKAND	8,345	0.07%	5,002	0.02%	66.83%
MITILINI	7,793	0.07%	61		
KARPATOS	7,314	0.06%	7,933	0.04%	-7.80%
BARI -PALESE MACCHIE	6,218	0.05%	21,869	0.11%	-71.56%





Int'l Accumulated Passenger Traffic

Distribution by First Destination

Destination	Accumulated 2024		Accumulated 2023		
	Passengers	Rate of Total	Passengers	Rate of Total	Rate of Change
MALAGA	5,949	0.05%	7,102	0.03%	-16.23%
ZANZIBAR	5,736	0.05%	10,453	0.05%	-45.12%
JOHANNESBURG	5,633	0.05%	37,893	0.19%	-85.13%
YEREVAN	5,537	0.05%	16,230	0.08%	-65.88%
SARAJEVO	5,313	0.04%			
RZESZOW-JASIONKA	5,260	0.04%	4,464	0.02%	17.83%
ROVANIEMI	4,924	0.04%	10,281	0.05%	-52.10%
MULHOUSE	3,769	0.03%			
SUCEAVA-ROMANIA	3,642	0.03%	6,088	0.03%	-40.17%
KAUNAS	3,528	0.03%	200		
MALTA	3,145	0.02%	39,394	0.20%	-92.01%
ST. PETERSBURG	3,105	0.02%	60		
PIESTANY	2,953	0.02%	2,788	0.01%	5.91%
INNSBRUCK	2,713	0.02%	6,200	0.03%	-56.24%
LYON - SATOLAS	2,603	0.02%	30,758	0.16%	-91.53%
ZADAR	2,557	0.02%	11		
COLOMBO-KATUNAYAKE	2,396	0.02%	452		
DUBAI AL MAKTOUM INT AP	2,282	0.02%	730		
BADEN BADEN	2,049	0.01%	27,388	0.14%	-92.51%
DEBRECEN	2,015	0.01%	33,375	0.17%	-93.96%
MEMMINGEN	2,014	0.01%	27,108	0.14%	-92.57%
OTHERS	23,374	0.21%	3,845,542	20.22%	-99.39%





Int'l Accumulated Passenger Traffic

Distribution by First Destination

Destination	Accumulated 2024		Accumulated 2023		
	Passengers	Rate of Total	Passengers	Rate of Total	Rate of Change
TOTAL	10,851,923		19,012,770		-42.92%



Cargo Activity





Cargo Handling

Distribution by Transporter

Transporter	September 2024 (Ton)	September 2023 (Ton)	Rate of Change
Cargo on Passenger Aircrafts - Incoming	4,436	8,514	-47.89%
Cargo on Passenger Aircrafts - Outgoing	4,364	5,623	-22.39%
Total Cargo on Passenger Aircrafts	8,799	14,136	-37.75%
Cargo on Cargo Aircrafts - Incoming	14,700	9,948	47.76%
Cargo on Cargo Aircrafts - Outgoing	5,837	4,544	28.45%
Total Cargo on Cargo Aircrafts	20,537	14,492	41.71%
Total	29,336	28,628	2.47%

Distribution by Months

Month	2024 (ton)			2023 (ton)			Rate of Change
	Cargo	Mail	Total	Cargo	Mail	Total	
January	26,619	580	27,200	28,684	635	29,320	-7.23%
February	26,737	441	27,178	28,279	561	28,841	-5.76%
March	29,890	402	30,291	32,972	745	33,717	-10.16%
April	27,294	427	27,721	27,461	626	28,086	-1.29%
May	27,702	523	28,225	29,346	653	29,999	-5.91%
June	27,477	388	27,864	27,858	562	28,419	-1.95%
July	30,216	432	30,648	28,987	548	29,536	3.76%
August	27,788	342	28,130	30,413	575	30,988	-9.22%
September	28,920	416	29,336	28,104	524	28,628	2.47%
Total	252,643	3,951	256,593	262,104	5,429	267,534	-4.08%





Cargo Handling on Passenger Aircrafts

Distribution by Airline for September

September 2024					September 2023					
Airline	Incoming Cargo (Ton)	Outgoing Cargo (Ton)	Cargo (Ton)	Rate of Total	Incoming Cargo (Ton)	Outgoing Cargo (Ton)	Cargo (Ton)	Rate of Total	Rate of Change	
LY EL AL ISRAEL AIRLINES	2,743	3,388	6,132	69.68%	1,934	1,913	3,847	27.21%	59.39%	
AF AIR FRANCE	299	242	541	6.14%	542	198	740	5.23%	-26.89%	
UX AIR EUROPA	339	148	487	5.53%	281	96	377	2.66%	29.17%	
HU HAINAN AIRLINES	290	129	419	4.76%	283	82	364	2.57%	15.10%	
LX SWISS INT'L AIRLINES	108	116	224	2.54%	48	50	99	0.70%	126.26%	
HY UZBEKISTAN AIR	131	57	188	2.13%	14	13	26	0.18%		
FZ FLYDUBAI	143	13	157	1.78%	72	10	82	0.58%	91.46%	
EY ETIHAD AIRWAYS	36	49	85	0.96%	174	102	277	1.95%	-69.31%	
ET ETHIOPIAN AIRLINES	40	36	76	0.86%	141	33	174	1.23%	-56.32%	
FX FEDERAL EXPRESS	57		57	0.64%						
J2 AZERBAIJAN AIRLINES	22	23	45	0.51%	15	6	21	0.14%	114.28%	
QS SMARTWINGS	30	9	39	0.44%	17		17	0.12%	129.41%	
A3 AEGEAN AIRLINES	30	5	35	0.39%	33	17	50	0.35%	-30.00%	
RO TAROM - ROMANIAN AIR TRAN	28	5	33	0.37%	9	3	12	0.08%	175.00%	
GH GEORGIAN AIRLINES		28	28	0.31%						
H4 HISKY EUROPE SRL	25	2	27	0.30%						
AZ ITALIA TRASPORTO AEREO	13	9	22	0.25%	28	10	38	0.26%	-42.10%	
NCR NATIONAL AIRLINES		21	21	0.23%						
BA BRITISH AIRWAYS PLC		17	17	0.19%	398	148	546	3.86%	-96.88%	
H7 HISKY	11	4	15	0.17%	1	2	3	0.02%		
LH LUFTHANSA	12	2	14	0.15%	49	33	83	0.58%	-83.13%	
5Y ATLAS AIR Inc.		13	13	0.14%						





Cargo Handling on Passenger Aircrafts

Distribution by Airline for September

September 2024					September 2023				
Airline	Incoming Cargo (Ton)	Outgoing Cargo (Ton)	Cargo (Ton)	Rate of Total	Incoming Cargo (Ton)	Outgoing Cargo (Ton)	Cargo (Ton)	Rate of Total	Rate of Change
LO LOT POLISH AIRLINES	10	3	13	0.14%	39	5	44	0.31%	-70.45%
U8 TUS AIRWAYS	10	2	12	0.13%	13	2	15	0.10%	-20.00%
I2 IBERIA EXPRESS	3	8	12	0.13%	19	16	35	0.24%	-65.71%
WZ RED WINGS AIRLINES	3	8	11	0.12%	2	5	8	0.05%	37.50%
ZS SOLINAIR		10	10	0.11%					
5F FLYONE	8	2	10	0.11%		1	1		
A4 AZIMUTH AIRLINES	10		10	0.11%	1		1		
OS AUSTRIAN AIRLINES	9		10	0.11%	9	6	14	0.09%	-28.57%
C6 MY FREIGHTER LLC		7	7	0.07%					
FB BULGARIA AIR	7		7	0.07%	2	1	3	0.02%	133.33%
HM AIR SEYCHELLES	5		5	0.05%	12		12	0.08%	-58.33%
CY CYPRUS AIRWAYS	4	1	4	0.04%	3	1	3	0.02%	33.33%
IZ ARKIA ISRAELI AIRLINES	4		4	0.04%	2		2	0.01%	100.00%
BT AIR BALTIC	4		4	0.04%	8	2	10	0.07%	-60.00%
6H ISRAIR AIRLINES		3	3	0.03%		1	1		200.00%
BZ BLUE BIRD AIRWAYS	1		1	0.01%					
SN BRUSSELS AIRLINES	1		1	0.01%	19	3	22	0.15%	-95.45%
TOTAL	4,436	4,364	8,799		8,514	5,623	14,136		-37.75%





Accumulated Cargo Handling on Passengers Aircrafts

Distribution by Airline

Accumulated 2024					Accumulated 2023					
Airline		Incoming Cargo (Ton)	Outgoing Cargo (Ton)	Cargo (Ton)	Rate of Total	Incoming Cargo (Ton)	Outgoing Cargo (Ton)	Cargo (Ton)	Rate of Total	Rate of Change
LY	EL AL ISRAEL AIRLINES	22,906	28,500	51,406	70.16%	18,946	20,005	38,952	29.98%	31.97%
AF	AIR FRANCE	2,408	2,151	4,559	6.22%	4,570	2,754	7,324	5.63%	-37.75%
HU	HAINAN AIRLINES	2,006	1,010	3,017	4.11%	1,952	686	2,638	2.03%	14.36%
UX	AIR EUROPA	1,935	908	2,842	3.87%	2,603	805	3,408	2.62%	-16.60%
UA	UNITED AIRLINES	1,035	1,121	2,156	2.94%	7,867	7,871	15,738	12.11%	-86.30%
LX	SWISS INT'L AIRLINES	777	734	1,512	2.06%	529	352	882	0.67%	71.42%
FZ	FLYDUBAI	1,104	176	1,280	1.74%	798	145	943	0.72%	35.73%
HY	UZBEKISTAN AIR	445	305	750	1.02%	140	150	291	0.22%	157.73%
AI	AIR INDIA	393	353	745	1.01%	679	431	1,110	0.85%	-32.88%
FX	FEDERAL EXPRESS	420	174	594	0.81%	9	2	12		
DL	DELTA AIRLINES	243	240	483	0.65%	2,446	1,980	4,427	3.40%	-89.08%
A3	AEGEAN AIRLINES	413	60	473	0.64%	407	166	573	0.44%	-17.45%
EY	ETIHAD AIRWAYS	158	168	326	0.44%	1,222	398	1,620	1.24%	-79.87%
ET	ETHIOPIAN AIRLINES	225	96	321	0.43%	772	278	1,050	0.80%	-69.42%
LH	LUFTHANSA	177	66	243	0.33%	434	316	750	0.57%	-67.60%
QS	SMARTWINGS	187	28	214	0.29%	114	16	130	0.10%	64.61%
LO	LOT POLISH AIRLINES	149	56	205	0.27%	329	77	406	0.31%	-49.50%
AZ	ITALIA TRASPORTO AEREO	113	77	191	0.26%	323	175	498	0.38%	-61.64%
J2	AZERBAIJAN AIRLINES	123	67	190	0.25%	87	13	100	0.07%	90.00%
NC R	NATIONAL AIRLINES		166	166	0.22%					
RO	TAROM - ROMANIAN AIR TRAN	123	31	154	0.21%	104	30	134	0.10%	14.92%
OS	AUSTRIAN AIRLINES	124	19	144	0.19%	131	58	189	0.14%	-23.80%





Accumulated Cargo Handling on Passengers Aircrafts

Distribution by Airline

Accumulated 2024					Accumulated 2023					
Airline	Incoming Cargo (Ton)	Outgoing Cargo (Ton)	Cargo (Ton)	Rate of Total	Incoming Cargo (Ton)	Outgoing Cargo (Ton)	Cargo (Ton)	Rate of Total	Rate of Change	
H7 HISKY	84	42	127	0.17%	9	5	13	0.01%		
U8 TUS AIRWAYS	104	20	124	0.16%	141	18	159	0.12%	-22.01%	
A4 AZIMUTH AIRLINES	105	14	119	0.16%	14	6	20	0.01%		
WZ RED WINGS AIRLINES	35	64	100	0.13%	23	41	63	0.04%	58.73%	
I2 IBERIA EXPRESS	32	60	92	0.12%	115	94	209	0.16%	-55.98%	
H4 HISKY EUROPE SRL	82	9	91	0.12%						
BA BRITISH AIRWAYS PLC		78	78	0.10%	3,091	1,306	4,397	3.38%	-98.22%	
5Y ATLAS AIR Inc.		77	77	0.10%		102	102	0.07%	-24.50%	
C6 MY FREIGHTER LLC		64	64	0.08%						
HM AIR SEYCHELLES	63		64	0.08%	86	1	87	0.06%	-26.43%	
5F FLYONE	41	14	55	0.07%	44	10	55	0.04%		
BT AIR BALTIC	38	7	45	0.06%	85	23	108	0.08%	-58.33%	
6H ISRAIR AIRLINES	4	41	45	0.06%		15	15	0.01%	200.00%	
CY CYPRUS AIRWAYS	41	2	43	0.05%	12	5	17	0.01%	152.94%	
GH GEORGIAN AIRLINES		29	29	0.03%						
AC AIR CANADA	7	19	25	0.03%	2,909	3,040	5,949	4.58%	-99.57%	
KL K.L.M.	2	14	16	0.02%	1,475	622	2,097	1.61%	-99.23%	
FB BULGARIA AIR	15		15	0.02%	23	13	36	0.02%	-58.33%	
QY EUROPEAN AIR TRANSPORT	6	7	13	0.01%	11	25	36	0.02%	-63.88%	
RD EASY CHARTER LLC		11	11	0.01%						
8V ASTRAL AVIATION		11	11	0.01%		18	18	0.01%	-38.88%	
ZS SOLINAIR		10	10	0.01%						





Accumulated Cargo Handling on Passengers Aircrafts

Distribution by Airline

Accumulated 2024					Accumulated 2023				
Airline	Incoming Cargo (Ton)	Outgoing Cargo (Ton)	Cargo (Ton)	Rate of Total	Incoming Cargo (Ton)	Outgoing Cargo (Ton)	Cargo (Ton)	Rate of Total	Rate of Change
SN BRUSSELS AIRLINES	7	3	10	0.01%	217	21	238	0.18%	-95.79%
MJ MYWAY AIRLINES	1	7	9	0.01%					
IZ ARKIA ISRAELI AIRLINES	5	1	6		3	3	6		
3V ASL AIRLINES BELGIUM		5	5						
BZ BLUE BIRD AIRWAYS	4		4		1		1		
LV AIRZENA		1	1						
GW GETJET AIRLINES		1	1						
TOTAL	36,144	37,121	73,264		75,707	54,179	129,884		-43.59%





Cargo Handling on Cargo Aircrafts

Distribution by Airlines September

September 2024						September 2023				
Airline		Incoming Cargo (Ton)	Outgoing Cargo (Ton)	Cargo (Ton)	Rate of Total	Incoming Cargo (Ton)	Outgoing Cargo (Ton)	Cargo (Ton)	Rate of Total	Rate of Change
ICL	C.A.L ISRAELI CARGO	4,993	1,625	6,618	32.22%	3,093	829	3,922	27.06%	68.74%
QY	EUROPEAN AIR TRANSPORT	1,774	1,391	3,165	15.41%	1,332	1,090	2,421	16.70%	30.73%
C6	MY FREIGHTER LLC	2,175	150	2,326	11.32%					
AZG	SILK WAY WEST AIRLINES	1,230	756	1,987	9.67%	378	581	959	6.61%	107.19 %
LY	EL AL ISRAEL AIRLINES	1,228	686	1,915	9.32%	717	340	1,057	7.29%	81.17%
NCR	NATIONAL AIRLINES	957	324	1,282	6.24%					
FX	FEDERAL EXPRESS	779	387	1,166	5.67%	649	318	967	6.67%	20.57%
ABR	ASL Airlines (Ireland) Li	302	219	521	2.53%					
5Y	ATLAS AIR Inc.	367	29	396	1.92%	104		104	0.71%	
LH	LUFTHANSA	146	146	292	1.42%	396	360	756	5.21%	-61.37%
ABD	ATLANTA ICELANDIC	279		279	1.35%	535	205	741	5.11%	-62.34%
ET	ETHIOPIAN AIRLINES	149	43	192	0.93%	27	17	43	0.29%	
GH	GEORGIAN AIRLINES	112		112	0.54%					
M4	POSTE AIR CARGO	76	12	88	0.42%	30	23	53	0.36%	66.03%
8V	ASTRAL AVIATION	83		83	0.40%	103		103	0.71%	-19.41%
ZS	SOLINAIR	43		43	0.20%					
AZQ	SILK WAY AIRLINES		39	39	0.18%					
	OTHERS	5	29	35	0.17%	2,584	781	3,365	23.21%	-98.95%
	TOTAL	14,700	5,837	20,537		9,948	4,544	14,492		41.71%





Accumulated Cargo Handling on Cargo Aircrafts

Distribution by Airline

Accumulated 2024						Accumulated 2023				
Airline		Incoming Cargo (Ton)	Outgoing Cargo (Ton)	Cargo (Ton)	Rate of Total	Incoming Cargo (Ton)	Outgoing Cargo (Ton)	Cargo (Ton)	Rate of Total	Rate of Change
ICL	C.A.L ISRAELI CARGO	43,789	15,033	58,822	32.08%	31,756	12,448	44,203	32.11%	33.07%
QY	EUROPEAN AIR TRANSPORT	14,374	12,568	26,942	14.69%	12,466	8,313	20,779	15.09%	29.65%
AZG	SILK WAY WEST AIRLINES	11,195	7,365	18,561	10.12%	3,435	5,342	8,777	6.37%	111.47%
LY	EL AL ISRAEL AIRLINES	8,287	5,407	13,695	7.47%	2,167	1,237	3,404	2.47%	
C6	MY FREIGHTER LLC	8,320	530	8,851	4.82%					
LH	LUFTHANSA	4,575	3,667	8,242	4.49%	4,253	3,658	7,911	5.74%	4.18%
NCR	NATIONAL AIRLINES	7,185	437	7,622	4.15%	19		19	0.01%	
FX	FEDERAL EXPRESS	4,585	2,424	7,009	3.82%	5,977	3,117	9,094	6.60%	-22.92%
3V	ASL AIRLINES BELGIUM	4,409	1,834	6,243	3.40%					
MNB	MNG CARGO AIRLINES	5,122	720	5,842	3.18%	11,831	1,062	12,894	9.36%	-54.69%
RD	EASY CHARTER LLC	4,553	811	5,364	2.92%					
ABR	ASL Airlines (Ireland) Li	2,550	2,063	4,613	2.51%					
ABD	ATLANTA ICELANDIC	2,278	1	2,279	1.24%	535	205	741	0.53%	
ET	ETHIOPIAN AIRLINES	1,390	718	2,109	1.15%	743	197	940	0.68%	124.36%
IGA	SKY TAXI	1,153	241	1,394	0.76%					
5Y	ATLAS AIR Inc.	951	29	980	0.53%	685	4	689	0.50%	42.23%
M4	POSTE AIR CARGO	616	281	897	0.48%	676	271	947	0.68%	-5.27%
5O	ASL AIRLINES	403	331	734	0.40%					
8V	ASTRAL AVIATION	724	1	726	0.39%	448	66	514	0.37%	41.24%
HY	UZBEKISTAN AIR	669	2	671	0.36%					
GH	GEORGIAN AIRLINES	337		337	0.18%					
MJ	MYWAY AIRLINES	221	23	244	0.13%	15		15	0.01%	





Accumulated Cargo Handling on Cargo Aircrafts

Distribution by Airline

		Accumulated 2024				Accumulated 2023				
Airline		Incoming Cargo (Ton)	Outgoing Cargo (Ton)	Cargo (Ton)	Rate of Total	Incoming Cargo (Ton)	Outgoing Cargo (Ton)	Cargo (Ton)	Rate of Total	Rate of Change
RH	HONG KONG AIR CARGO CARRI	195	33	227	0.12%					
HQ	COMPASS AIR CARGO	79	70	150	0.08%					
AZQ	SILK WAY AIRLINES	37	74	111	0.06%		13	13		
DO	DHL AIR Ltd	24	21	46	0.02%					
ZS	SOLINAIR	43		43	0.02%					
FGB	AIR 65	7	5	12						
VKA	VULKAN AIR	2		2		3		3		-33.33%
	OTHERS	349	214	564	0.30%	15,644	11,065	26,708	19.40%	-97.88%
	TOTAL	128,426	54,904	183,329		90,651	46,996	137,650		33.18%





Cargo Handling on Cargo Aircrafts

Distribution by Countries for September

Country	September 2024				September 2023				
	Incoming Cargo (Ton)	Outgoing Cargo (Ton)	Cargo (Ton)	Rate of Total	Incoming Cargo (Ton)	Outgoing Cargo (Ton)	Cargo (Ton)	Rate of Total	Rate of Change
BELGIUM	3,221	1,650	4,871	23.71%	1,660	1,543	3,203	22.10%	52.07%
GERMANY	2,403	1,926	4,329	21.07%	2,092	1,095	3,186	21.98%	35.87%
CHINA	1,974	315	2,288	11.14%	1,808	312	2,120	14.62%	7.92%
UZBEKISTAN	2,064	150	2,214	10.78%					
AZERBAIJAN	747	795	1,543	7.51%	378	581	959	6.61%	60.89%
SPAIN	868	74	942	4.58%	567		567	3.91%	66.13%
NORWAY	377		377	1.83%	975		975	6.72%	-61.33%
GREECE	254	120	374	1.82%	33		33	0.22%	
INDIA	315	46	361	1.75%					
CYPRUS	30	171	201	0.97%	221	72	293	2.02%	-31.39%
ETHIOPIA	149	40	190	0.92%	27	17	43	0.29%	
ITALY	106	39	144	0.70%	30	114	145	1.00%	-0.68%
GEORGIA	112		112	0.54%					
FRANCE		83	83	0.40%	272	76	348	2.40%	-76.14%
KENYA	83		83	0.40%	103		103	0.71%	-19.41%
MALTA		73	73	0.35%					
THAILAND		29	29	0.14%					
BULGARIA		23	23	0.11%					
LUXEMBOURG	14		14	0.06%					
POLAND		13	13	0.06%					
EGYPT	5	3	8	0.03%		239	239	1.64%	-96.65%
CZECH REPUBLIC		4	4	0.01%					





Cargo Handling on Cargo Aircrafts

Distribution by Countries for September

Country	September 2024				September 2023				
	Incoming Cargo (Ton)	Outgoing Cargo (Ton)	Cargo (Ton)	Rate of Total	Incoming Cargo (Ton)	Outgoing Cargo (Ton)	Cargo (Ton)	Rate of Total	Rate of Change
OTHERS	1,979	281	2,259	10.99%	1,782	495	2,277	15.71%	-0.79%
TOTAL	14,700	5,837	20,537		9,948	4,544	14,492		41.71%





Accumulated Cargo Handling on Cargo Aircrafts

Distribution by Countries

Countries	Accumulated 2024				Accumulated 2023				
	Incoming Cargo (Ton)	Outgoing Cargo (Ton)	Cargo (Ton)	Rate of Total	Incoming Cargo (Ton)	Outgoing Cargo (Ton)	Cargo (Ton)	Rate of Total	Rate of Change
BELGIUM	32,915	18,932	51,847	28.28%	18,548	20,803	39,351	28.58%	31.75%
GERMANY	23,115	17,628	40,743	22.22%	19,308	9,911	29,219	21.22%	39.44%
CHINA	20,683	2,006	22,688	12.37%	13,645	1,335	14,981	10.88%	51.44%
AZERBAIJAN	7,083	7,402	14,485	7.90%	3,435	5,355	8,789	6.38%	64.80%
UZBEKISTAN	8,472	559	9,031	4.92%		6	6		
TURKEY	7,319	1,385	8,703	4.74%	16,635	3,181	19,816	14.39%	-56.08%
SPAIN	4,089	79	4,169	2.27%	1,724	46	1,769	1.28%	135.66%
NORWAY	2,198	33	2,231	1.21%	8,262		8,262	6.00%	-72.99%
GEORGIA	2,096	88	2,184	1.19%	19		19	0.01%	
ETHIOPIA	1,390	590	1,980	1.08%	743	197	940	0.68%	110.63%
ITALY	845	1,057	1,902	1.03%	679	578	1,257	0.91%	51.31%
INDIA	1,685	70	1,755	0.95%		51	51	0.03%	
GREECE	1,329	324	1,653	0.90%	56	197	253	0.18%	
FRANCE	462	933	1,395	0.76%	2,615	594	3,209	2.33%	-56.52%
EGYPT	45	1,289	1,334	0.72%	3	2,392	2,395	1.73%	-44.30%
CYPRUS	579	358	937	0.51%	3,986	436	4,422	3.21%	-78.81%
KENYA	395	209	604	0.32%	448	40	489	0.35%	23.51%
MALTA		442	442	0.24%					
SWITZERLAND	133	133	266	0.14%	68		68	0.04%	
NETHERLANDS	128	136	263	0.14%					
UNITED KINGDOM	101	100	201	0.10%	5	86	91	0.06%	120.87%
SOUTH KOREA	201		201	0.10%					





Accumulated Cargo Handling on Cargo Aircrafts

Distribution by Countries

Countries	Accumulated 2024				Accumulated 2023				
	Incoming Cargo (Ton)	Outgoing Cargo (Ton)	Cargo (Ton)	Rate of Total	Incoming Cargo (Ton)	Outgoing Cargo (Ton)	Cargo (Ton)	Rate of Total	Rate of Change
VIETNAM	175		175	0.09%					
TANZANIA		126	126	0.06%					
CZECH REPUBLIC	89	8	97	0.05%					
MOROCCO	91		91	0.04%	59	74	134	0.09%	-32.08%
ROMANIA	27	60	87	0.04%					
SINGAPORE	82		82	0.04%					
POLAND		80	80	0.04%					
BULGARIA	2	37	40	0.02%					
THAILAND		29	29	0.01%		109	109	0.07%	-73.39%
CANADA	21		21	0.01%					
LUXEMBOURG	14		14						
JORDAN		11	11		90	121	210	0.15%	-94.76%
MACEDONIA	10		10						
MONTENEGRO	4		4						
AUSTRIA		4	4			741	741	0.53%	-99.46%
TURKMENISTAN		4	4						
PORTUGAL		2	2						
OTHERS	12,646	792	13,437	7.32%	325	744	1,068	0.77%	
TOTAL	128,426	54,904	183,329		90,651	46,996	137,650		33.18%



Domestic Activity

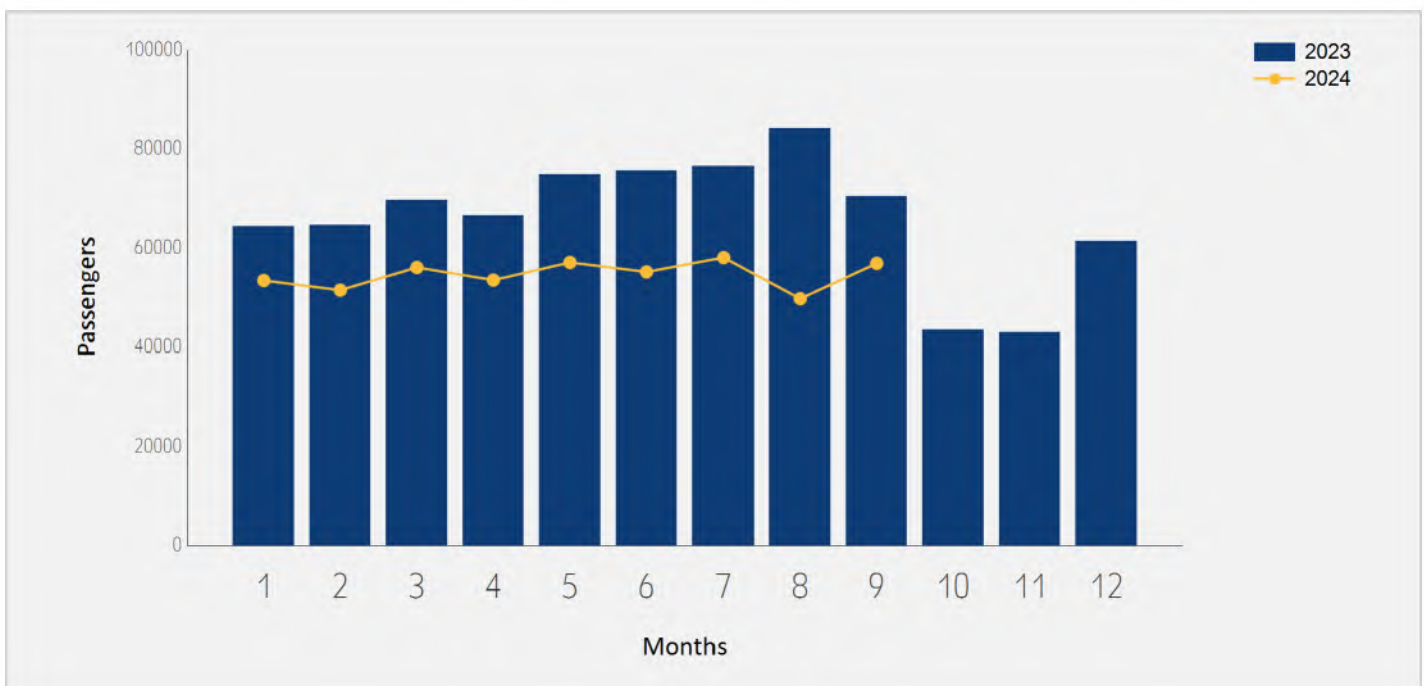




Domestic Passenger Traffic

Distribution by Months

Month	2024	2023	Rate of Change
January	53,410	64,275	-16.90%
February	51,461	64,605	-20.34%
March	56,042	69,701	-19.59%
April	53,490	66,584	-19.66%
May	57,056	74,806	-23.72%
June	55,148	75,564	-27.01%
July	58,034	76,526	-24.16%
August	49,737	84,142	-40.88%
September	56,877	70,374	-19.17%
Total	491,255	646,577	-24.02%

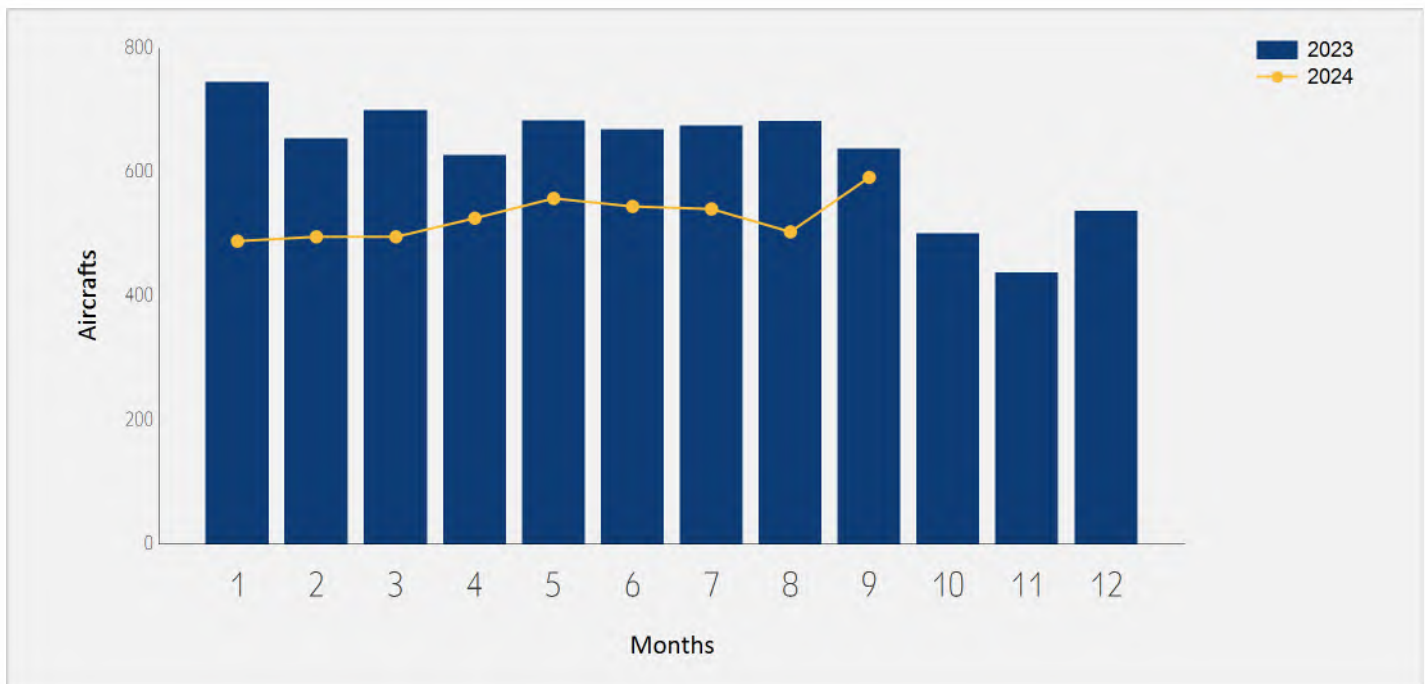




Domestic Aircrafts Traffic

Distribution by Months

Month	2024	2023	Rate of Change
January	488	745	-34.49%
February	495	654	-24.31%
March	495	699	-29.18%
April	525	627	-16.26%
May	557	683	-18.44%
June	544	668	-18.56%
July	540	674	-19.88%
August	503	682	-26.24%
September	591	637	-7.22%
Total	4,738	6,069	-21.93%





Domestic Passengers Traffic

Distribution by Airlines for September

September 2024			September 2023		
Airline	Passengers	Rate of Total	Passengers	Rate of Total	Rate of Change
IZ ARKIA ISRAELI AIRLINES	41,102	72.26%	45,287	64.35%	-9.24%
6H ISRAIR AIRLINES	15,300	26.90%	24,862	35.32%	-38.46%
OTHERS	475	0.83%	225	0.31%	111.11%
TOTAL	56,877		70,374		-19.17%

Accumulated Domestic Passengers Traffic

Distribution by Airlines

Accumulated 2024			Accumulated 2023		
Airline	Passengers	Rate of Total	Passengers	Rate of Total	Rate of Change
IZ ARKIA ISRAELI AIRLINES	329,639	67.10%	438,224	67.77%	-24.77%
6H ISRAIR AIRLINES	160,404	32.65%	206,643	31.95%	-22.37%
OTHERS	1,212	0.24%	1,710	0.26%	-29.12%
TOTAL	491,255		646,577		-24.02%





Domestic Passenger Traffic

Distribution by Destinations for September

Destination	September 2024		September 2023		Rate of Change
	Passengers	Rate of Total	Passengers	Rate of Total	
RAMON	56,481	99.30%	69,599	98.89%	-18.84%
OTHERS	396	0.69%	775	1.10%	-48.90%
TOTAL	56,877		70,374		-19.17%

Accumulated Domestic Passenger Traffic

Distribution by Destinations

Destination	Accumulated 2024		Accumulated 2023		Rate of Change
	Passengers	Rate of Total	Passengers	Rate of Total	
RAMON	489,831	99.71%	641,267	99.17%	-23.61%
OTHERS	1,424	0.28%	5,310	0.82%	-73.18%
TOTAL	491,255		646,577		-24.02%

