

Monthly Report

Ben Gurion International Airport

March 2021



Israel Airport Authority

Ben Gurion International Airport

Produced by the Industry & Management Department

This report is protected by copyright and is the exclusive property of the Israel Airports Authority.

It must be emphasized that the data in the report are based on the reports of the airlines, and received under their responsibility.

The information is intended for personal use, and therefore may not be quoted or passed on to any third party without written permission from the Israel Airports Authority.

In addition, no commercial use may be made of this report.

Edit Yehoshua

Activity Coordinator

Tel. +972-3-9752017

Email: edity@iaa.gov.il

Rachel Lehava

Manager, Industrial & Management Dep.

Tel. +972-3-9752019

Email: rachelle@iaa.gov.il

Yossi Tzemach

Head, Industrial & Management Dep.

Tel. +972-3-9752020

Email: yossiz@iaa.gov.il



Dear friends and partners,

I hereby respectfully submit for your review a report summarizing the aviation activity at Ben - Gurion International Airport in March 2021.

During the month, a total of 173,798 passengers on 3,544 international and domestic flights passed through Ben- Gurion Airport.

International passenger traffic in March totaled 133,546 passengers representing a decrease of 71.7% compared to March 2020.

International aircraft traffic totaled 2,886 flights, representing a decrease of 42.71% compared to March 2020.

The report reflects the decrease in traffic due to the Corona pandemic.

On domestic flights 40,252 passengers passed through Ben- Gurion Airport this month, compared with 30,137 in March 2020, an increase of 33.56%.

Israeli airlines carried 50,374 passengers in this month, 37.72% of all travelers passing through Ben - Gurion Airport, a decrease of 60.65% relative to the previous March.

The Destination with the highest volume of activity was NEW YORK - J.F.KENNEDY with a total of 19,901 passengers to and from, a decrease of 7.2% compared to the previous March.

The country with the highest volume of activity was the UNITED STATES, with 36,843 passengers, constituting 27.58% of all activity.

Cargo transportation this month stood at 32,625 tons and reflects an increase of 20.55% compared to March 2020. 3,993 tons were transported in passenger aircraft and 28,632 tons in cargo aircraft.

Below you will find additional tables providing details about movements of aircraft, passengers and cargo at Ben - Gurion International Airport.

Sincerely yours,

Shmuel Zakay

Managing Director,

Ben-Gurion International Airport



Content



Aviation Activity

Aviation Activity Summary	1
International Activity Summary	2 - 4
Domestic Activity Summary	5



International Activity

Distribution By Months	7 - 8
Distribution By Airlines	9 - 15
Distribution By Countries	16 - 19
Distribution By First Destination	20 - 27



Cargo Activity

Distribution by Transporter	29
Distribution By Months	29
Distribution By Airlines	30 - 34
Distribution By Countries	35 - 37



Domestic Activity

Distribution By Months	39 - 40
Distribution By Airlines	41
Distribution By Destinations	42





Passengers and Aircrafts

Aviation Activity at Ben Gurion International Airport

International Activity

	Current Month			Accumulated Since the beginning of the year		
	March 2021	March 2020	Rate Of Change	2021	2020	Rate Of Change
Incoming Aircrafts	1,450	2,510	-42.23%	3,444	13,312	-74.12%
Outgoing Aircrafts	1,436	2,528	-43.19%	3,422	13,307	-74.28%
Total Aircrafts	2,886	5,038	-42.71%	6,866	26,619	-74.20%
Incoming Passengers	52,480	240,843	-78.20%	111,749	1,733,632	-93.55%
Outgoing Passengers	81,066	231,064	-64.91%	133,898	1,714,105	-92.18%
Transit Passengers		143	-100.00%	5	1,971	-99.74%
Total Passengers	133,546	471,907	-71.70%	245,647	3,447,737	-92.87%

Domestic Activity

	Current Month			Accumulated Since the beginning of the year		
	March 2021	March 2020	Rate Of Change	2021	2020	Rate Of Change
Aircrafts	658	547	20.29%	1,199	2,451	-51.08%
Passengers	40,252	30,137	33.56%	56,482	183,992	-69.30%

International and Domestic Activity Summary

	Current Month			Accumulated Since the beginning of the year		
	March 2021	March 2020	Rate Of Change	2021	2020	Rate Of Change
Aircrafts	3,544	5,585	-36.54%	8,065	29,070	-72.25%
Passengers	173,798	502,044	-65.38%	302,129	3,631,729	-91.68%





Passengers and Aircrafts

Int'l Aviation Activity at Ben Gurion International Airport by Terminal

Terminal 3

	Current Month			Accumulated Since the beginning of the year		
	March 2021	March 2020	Rate of Change	2021	2020	Rate of Change
Incoming Aircrafts	1,450	2,510	-42.23%	3,444	13,312	-74.12%
Outgoing Aircrafts	1,436	2,095	-31.45%	3,262	11,204	-70.88%
Total Aircrafts	2,886	4,605	-37.32%	6,706	24,516	-72.64%
Incoming Passengers	52,480	240,843	-78.20%	111,749	1,733,632	-93.55%
Outgoing Passengers	81,066	192,105	-57.80%	123,716	1,417,669	-91.27%
Transit Passengers		143	-100.00%	5	1,971	-99.74%
Total Passengers	133,546	432,948	-69.15%	235,465	3,151,301	-92.52%

Terminal 1

	Current Month			Accumulated Since the beginning of the year		
	March 2021	March 2020	Rate of Change	2021	2020	Rate of Change
Incoming Aircrafts						
Outgoing Aircrafts		433	-100.00%	160	2,103	-92.39%
Total Aircrafts		433	-100.00%	160	2,103	-92.39%
Incoming Passengers						
Outgoing Passengers		38,959	-100.00%	10,182	296,436	-96.56%
Total Passengers		38,959	-100.00%	10,182	296,436	-96.56%





Passengers and Aircrafts

Int'l Aviation Activity at Ben Gurion International Airport by Flight Type

Schedule and Charter Flights

	Current Month			Accumulated Since the beginning of the year		
	March 2021	March 2020	Rate of Change	2021	2020	Rate of Change
Incoming Aircrafts	536	2,119	-74.70%	1,158	12,059	-90.39%
Outgoing Aircrafts	544	2,118	-74.31%	1,179	12,038	-90.20%
Total Aircrafts	1,080	4,237	-74.51%	2,337	24,097	-90.30%
Incoming Passengers	50,968	240,429	-78.80%	108,844	1,731,026	-93.71%
Outgoing Passengers	79,586	230,697	-65.50%	130,984	1,711,695	-92.34%
Transit Passengers		143	-100.00%	5	1,971	-99.74%
Total Passengers	130,554	471,126	-72.28%	239,828	3,442,721	-93.03%

Private Flights

	Current Month			Accumulated Since the beginning of the year		
	March 2021	March 2020	Rate of Change	2021	2020	Rate of Change
Incoming Aircrafts	406	133	205.26%	826	514	60.70%
Outgoing Aircrafts	391	146	167.80%	809	522	54.98%
Total Aircrafts	797	279	185.66%	1,635	1,036	57.81%
Incoming Passengers	1,306	364	258.79%	2,436	1,483	64.26%
Outgoing Passengers	1,256	250	402.40%	2,376	1,382	71.92%
Total Passengers	2,562	614	317.26%	4,812	2,865	67.95%





Passengers and Aircrafts

Int'l Aviation Activity at Ben Gurion International Airport by Flight Type

Cargo Flights

	Current Month			Accumulated Since the beginning of the year		
	March 2021	March 2020	Rate of Change	2021	2020	Rate of Change
Incoming Aircrafts	477	251	90.03%	1,374	645	113.02%
Outgoing Aircrafts	472	254	85.82%	1,358	645	110.54%
Total Aircrafts	949	505	87.92%	2,732	1,290	111.78%
Incoming Passengers	34	29	17.24%	94	139	-32.37%
Outgoing Passengers	57	42	35.71%	167	145	15.17%
Total Passengers	91	71	28.16%	261	284	-8.09%

Other Flights

	Current Month			Accumulated Since the beginning of the year		
	March 2021	March 2020	Rate of Change	2021	2020	Rate of Change
Incoming Aircrafts	31	7	342.85%	86	94	-8.51%
Outgoing Aircrafts	29	10	190.00%	76	102	-25.49%
Total Aircrafts	60	17	252.94%	162	196	-17.34%
Incoming Passengers	172	21	719.04%	375	984	-61.89%
Outgoing Passengers	167	75	122.66%	371	883	-57.98%
Total Passengers	339	96	253.12%	746	1,867	-60.04%





Passengers and Aircrafts

Domestic Aviation Activity at Ben Gurion International Airport by Flight Type

Schedule Flights

	Current Month			Accumulated Since the beginning of the year		
	March 2021	March 2020	Rate of Change	2021	2020	Rate of Change
Aircrafts	506	447	13.19%	797	2,111	-62.24%
Passengers	40,094	30,109	33.16%	56,259	183,867	-69.40%

Private Flights

	Current Month			Accumulated Since the beginning of the year		
	March 2021	March 2020	Rate of Change	2021	2020	Rate of Change
Aircrafts	95	25	280.00%	238	117	103.41%
Passengers	83	28	196.42%	129	114	13.15%

Other Flights

	Current Month			Accumulated Since the beginning of the year		
	March 2021	March 2020	Rate of Change	2021	2020	Rate of Change
Aircrafts	57	75	-24.00%	164	223	-26.45%
Passengers	75			94	11	754.54%





International Activity

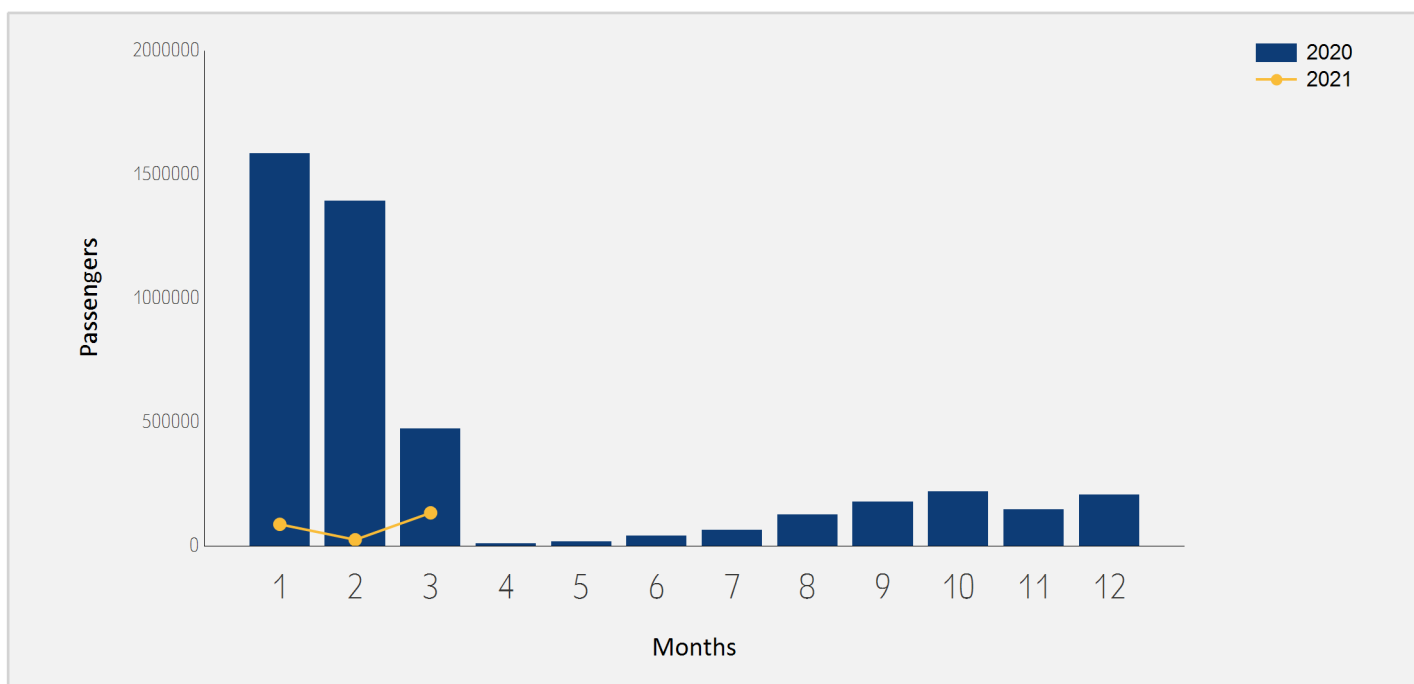




International Passenger Traffic

Distribution by Months

Months	2021	2020	Rate of Change
January	87,213	1,584,027	-94.49%
February	24,888	1,391,803	-98.21%
March	133,546	471,907	-71.70%
Total	245,647	3,447,737	-92.87%

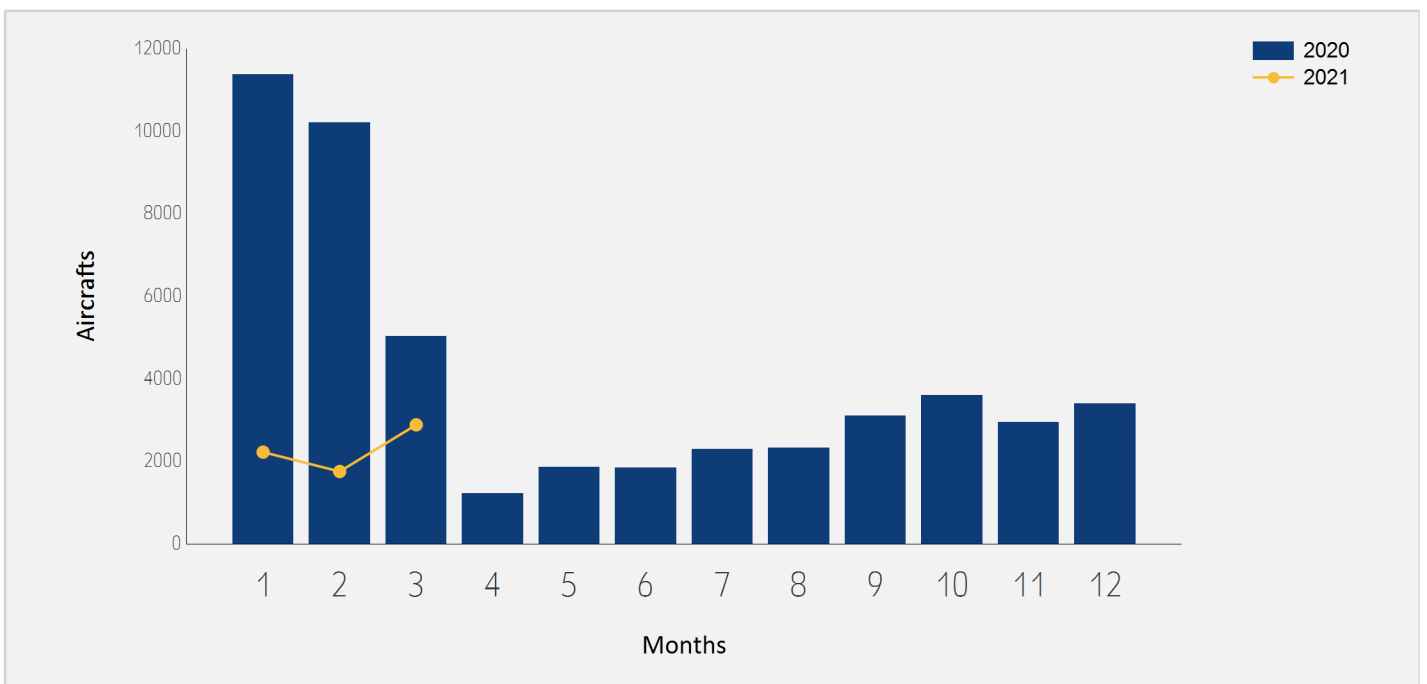




International Aircraft Traffic

Distribution by Months

Months	2021	2020	Rate of Change
January	2,225	11,374	-80.43%
February	1,755	10,207	-82.80%
March	2,886	5,038	-42.71%
Total	6,866	26,619	-74.20%





International Passenger Traffic

Distribution by Airline for March

		March 2021		March 2020		
Airline		Passengers	Rate of Total	Passengers	Rate of Total	Rate of Change
LY	EL AL ISRAEL AIRLINES	31,591	23.65%	110,788	23.47%	-71.48%
UA	UNITED AIRLINES	15,658	11.72%	33,596	7.11%	-53.39%
6H	ISRAIR AIRLINES	10,466	7.83%	13,699	2.90%	-23.60%
TK	TURKISH AIRLINES	8,030	6.01%	32,513	6.88%	-75.30%
LH	LUFTHANSA	7,893	5.91%	7,399	1.56%	6.67%
PS	UKRAINE INTL AIR	7,889	5.90%	11,813	2.50%	-33.21%
DL	DELTA AIRLINES	7,852	5.87%	6,176	1.30%	27.13%
IZ	ARKIA ISRAELI AIRLINES	7,655	5.73%	3,447	0.73%	122.07%
PC	PEGASUS AIRLINES	5,341	3.99%	11,127	2.35%	-51.99%
AF	AIR FRANCE	4,139	3.09%	3,231	0.68%	28.10%
ET	ETHIOPIAN AIRLINES	3,144	2.35%	6,275	1.32%	-49.89%
SU	AEROFLOT RUSSIAN AIRLINES	2,866	2.14%	23,116	4.89%	-87.60%
FZ	FLYDUBAI	2,141	1.60%			
VS	VIRGIN ATLANTIC AIRWAYS	1,468	1.09%	3,164	0.67%	-53.60%
EZY	EASYJET	1,423	1.06%	31,870	6.75%	-95.53%
AC	AIR CANADA	1,310	0.98%	5,819	1.23%	-77.48%
RO	TAROM - RUMANIAN AIR TRAN	1,137	0.85%	1,828	0.38%	-37.80%
BA	BRITISH AIRWAYS PLC	964	0.72%	12,281	2.60%	-92.15%
W6	WIZZAIR	911	0.68%	22,592	4.78%	-95.96%
OS	AUSTRIAN AIRLINES	867	0.64%	4,075	0.86%	-78.72%
KL	K.L.M.	782	0.58%	6,519	1.38%	-88.00%





International Passenger Traffic

Distribution by Airline for March

		March 2021		March 2020		
	Airline	Passengers	Rate of Total	Passengers	Rate of Total	Rate of Change
9U	AIR MOLDOVA	718	0.53%	1,687	0.35%	-57.43%
HM	AIR SEYCHELLES	708	0.53%	346	0.07%	104.62%
LX	SWISS INT'L AIRLINES	631	0.47%	4,418	0.93%	-85.71%
TO	TRANSAVIA FRANCE	616	0.46%	6,270	1.32%	-90.17%
AI	AIR INDIA	551	0.41%	3,849	0.81%	-85.68%
B2	BELAVIA AIRLINE	474	0.35%	1,865	0.39%	-74.58%
HU	HAINAN AIRLINES	440	0.32%			
FB	BULGARIA AIR	401	0.30%	2,309	0.48%	-82.63%
UX	AIR EUROPA Lineas Aereas	386	0.28%			
PQ	SKYUP AIRLINES	367	0.27%	1,970	0.41%	-81.37%
FR	RYANAIR	318	0.23%	21,185	4.48%	-98.49%
CX	CATHAY PACIFIC AIRWAYS	303	0.22%			
TB	JET AIRFLY	200	0.14%			
IB	IBERIA	185	0.13%	2,392	0.50%	-92.26%
PVG	PRIVILEG STYLE	134	0.10%			
A3	AEGEAN AIRLINES	131	0.09%	5,364	1.13%	-97.55%
BRO	2 EXCEL AVIATION LIMITED	124	0.09%	18		
AHS	AERO HANDLING	124	0.09%	78	0.01%	58.97%
QS	SMARTWINGS	121	0.09%	2,074	0.43%	-94.16%
	OTHERS	3,087	2.31%	66,754	14.14%	-95.37%
	TOTAL	133,546		471,907		-71.70%





Int'l Accumulated Passenger Traffic

Distribution by Airline

		Accumulated 2021		Accumulated 2020		
Airline		Passengers	Rate of Total	Passengers	Rate of Total	Rate of Change
LY	EL AL ISRAEL AIRLINES	56,809	23.12%	804,458	23.33%	-92.93%
UA	UNITED AIRLINES	28,492	11.59%	147,895	4.28%	-80.73%
6H	ISRAIR AIRLINES	21,622	8.80%	90,143	2.61%	-76.01%
TK	TURKISH AIRLINES	17,823	7.25%	196,100	5.68%	-90.91%
DL	DELTA AIRLINES	13,315	5.42%	40,900	1.18%	-67.44%
LH	LUFTHANSA	12,442	5.06%	93,562	2.71%	-86.70%
PC	PEGASUS AIRLINES	12,378	5.03%	85,282	2.47%	-85.48%
PS	UKRAINE INTL AIR	11,896	4.84%	75,943	2.20%	-84.33%
IZ	ARKIA ISRAELI AIRLINES	9,770	3.97%	34,617	1.00%	-71.77%
FZ	FLYDUBAI	7,088	2.88%			
ET	ETHIOPIAN AIRLINES	7,001	2.85%	28,572	0.82%	-75.49%
AF	AIR FRANCE	6,594	2.68%	51,752	1.50%	-87.25%
SU	AEROFLOT RUSSIAN AIRLINES	4,695	1.91%	112,538	3.26%	-95.82%
TO	TRANSAVIA FRANCE	2,547	1.03%	61,524	1.78%	-95.86%
AC	AIR CANADA	2,193	0.89%	27,263	0.79%	-91.95%
EZY	EASYJET	2,177	0.88%	241,922	7.01%	-99.10%
VS	VIRGIN ATLANTIC AIRWAYS	2,132	0.86%	25,246	0.73%	-91.55%
OS	AUSTRIAN AIRLINES	2,126	0.86%	44,351	1.28%	-95.20%
9U	AIR MOLDOVA	1,820	0.74%	8,088	0.23%	-77.49%
RO	TAROM - RUMANIAN AIR TRAN	1,698	0.69%	18,083	0.52%	-90.60%
W6	WIZZAIR	1,534	0.62%	216,533	6.28%	-99.29%





Int'l Accumulated Passenger Traffic

Distribution by Airline

		Accumulated 2021		Accumulated 2020		
Airline		Passengers	Rate of Total	Passengers	Rate of Total	Rate of Change
KL	K.L.M.	1,437	0.58%	26,316	0.76%	-94.53%
A3	AEGEAN AIRLINES	1,258	0.51%	53,669	1.55%	-97.65%
LX	SWISS INT`L AIRLINES	1,248	0.50%	47,095	1.36%	-97.35%
AI	AIR INDIA	1,214	0.49%	20,525	0.59%	-94.08%
FR	RYANAIR	1,109	0.45%	208,235	6.03%	-99.46%
B2	BELAVIA AIRLINE	1,039	0.42%	9,548	0.27%	-89.11%
BA	BRITISH AIRWAYS PLC	964	0.39%	62,138	1.80%	-98.44%
HM	AIR SEYCHELLES	895	0.36%	2,887	0.08%	-68.99%
TWI	TAILWIND AIRLINES	754	0.30%	11,989	0.34%	-93.71%
UX	AIR EUROPA Lineas Aereas	748	0.30%			
PQ	SKYUP AIRLINES	684	0.27%	8,818	0.25%	-92.24%
CX	CATHAY PACIFIC AIRWAYS	562	0.22%	18,041	0.52%	-96.88%
HU	HAINAN AIRLINES	440	0.17%	7,382	0.21%	-94.03%
FB	BULGARIA AIR	401	0.16%	11,138	0.32%	-96.39%
AHS	AERO HANDLING	231	0.09%	518	0.01%	-55.40%
TB	JET AIRFLY	200	0.08%			
PVG	PRIVILEG STYLE	188	0.07%	100		88.00%
IB	IBERIA	185	0.07%	30,252	0.87%	-99.38%
BRO	2 EXCEL AVIATION LIMITED	124	0.05%	18		
QS	SMARTWINGS	121	0.04%	17,954	0.52%	-99.32%
UL	SRILANKA AIRLINES	119	0.04%			





Int'l Accumulated Passenger Traffic

Distribution by Airline

Airline	Accumulated 2021		Accumulated 2020		Rate of Change
	Passengers	Rate of Total	Passengers	Rate of Total	
OTHERS	5,574	2.26%	506,342	14.68%	-98.89%
TOTAL	245,647		3,447,737		-92.87%





International Passenger Traffic

Distribution by Israeli Airlines for March

		March 2021		March 2020		
Airlines		Passengers	Rate of Total	Passengers	Rate of Total	Rate of Change
LY	EL AL ISRAEL AIRLINES	31,591	23.65%	110,788	23.47%	-71.48%
6H	ISR AIR AIRLINES	10,466	7.83%	13,699	2.90%	-23.60%
IZ	ARKIA ISRAELI AIRLINES	7,655	5.73%	3,447	0.73%	122.07%
	OTHERS	662	0.49%	85	0.01%	
	TOTAL	50,374	37.72%	128,019	27.12%	-60.65%

Int'l Accumulated Passenger Traffic

Distribution by Israeli Airlines

		Accumulated 2021		Accumulated 2020		
Airlines		Passengers	Rate of Total	Passengers	Rate of Total	Rate of Change
LY	EL AL ISRAEL AIRLINES	56,809	23.12%	804,458	23.33%	-92.93%
6H	ISR AIR AIRLINES	21,622	8.80%	90,143	2.61%	-76.01%
IZ	ARKIA ISRAELI AIRLINES	9,770	3.97%	34,617	1.00%	-71.77%
	OTHERS	1,777	0.72%	437	0.01%	
	TOTAL	89,978	36.62%	929,655	26.96%	-90.32%





International Passenger Traffic

Distribution by Countries for March

Countries	March 2021		March 2020		
	Passengers	Rate of Total	Passengers	Total of Rate	Rate of Change
UNITED STATES	36,843	27.58%	76,397	16.18%	-51.77%
GERMANY	16,471	12.33%	24,878	5.27%	-33.79%
FRANCE	13,870	10.38%	26,723	5.66%	-48.09%
TURKEY	13,834	10.35%	45,634	9.67%	-69.68%
UKRAINE	13,413	10.04%	19,044	4.03%	-29.56%
UNITED KINGDOM	8,395	6.28%	40,287	8.53%	-79.16%
UNITED ARAB EMIRATES	3,880	2.90%			
RUSSIAN FEDERATION	3,836	2.87%	37,347	7.91%	-89.72%
ETHIOPIA	3,265	2.44%	6,304	1.33%	-48.20%
GEORGIA	1,886	1.41%	7,431	1.57%	-74.61%
CANADA	1,310	0.98%	9,549	2.02%	-86.28%
ROMANIA	1,204	0.90%	12,917	2.73%	-90.67%
SEYCHELLES	1,195	0.89%	346	0.07%	
BULGARIA	1,155	0.86%	10,973	2.32%	-89.47%
CHINA	1,043	0.78%	137	0.02%	
AUSTRIA	1,043	0.78%	8,733	1.85%	-88.05%
CYPRUS	995	0.74%	7,581	1.60%	-86.87%
INDIA	966	0.72%	6,635	1.40%	-85.44%
NETHERLANDS	916	0.68%	18,075	3.83%	-94.93%
THAILAND	829	0.62%	804	0.17%	3.10%
MOLDOVA	797	0.59%	2,857	0.60%	-72.10%
SWITZERLAND	737	0.55%	11,950	2.53%	-93.83%





International Passenger Traffic

Distribution by Countries for March

Countries	March 2021		March 2020		
	Passengers	Rate of Total	Passengers	Total of Rate	Rate of Change
SPAIN	693	0.51%	16,089	3.40%	-95.69%
GREECE	685	0.51%	8,114	1.71%	-91.55%
ITALY	619	0.46%	2,760	0.58%	-77.57%
HUNGARY	536	0.40%	10,153	2.15%	-94.72%
BELARUS	495	0.37%	1,865	0.39%	-73.45%
JORDAN	280	0.20%	3,841	0.81%	-92.71%
EGYPT	245	0.18%	782	0.16%	-68.67%
SERBIA	235	0.17%	1,302	0.27%	-81.95%
PANAMA	200	0.14%			
EQUATORIAL GUINEA	189	0.14%			
AZERBAIJAN	187	0.14%	1,289	0.27%	-85.49%
CZECH REPUBLIC	173	0.12%	5,671	1.20%	-96.94%
UZBEKISTAN	155	0.11%	688	0.14%	-77.47%
BRAZIL	134	0.10%	4,688	0.99%	-97.14%
LITHUANIA	130	0.09%	1,976	0.41%	-93.42%
OTHERS	707	0.52%	38,087	8.07%	-98.14%
TOTAL	133,546		471,907		-71.70%





Int'l Accumulated Passenger Traffic

Distribution by Countries

Countries	Accumulated 2021		Accumulated 2020		
	Passengers	Rate of Total	Passengers	Rate of Total	Rate of Change
UNITED STATES	63,949	26.03%	354,239	10.27%	-81.94%
TURKEY	31,599	12.86%	318,234	9.23%	-90.07%
GERMANY	31,107	12.66%	236,394	6.85%	-86.84%
FRANCE	22,657	9.22%	238,841	6.92%	-90.51%
UKRAINE	20,517	8.35%	108,977	3.16%	-81.17%
UNITED ARAB EMIRATES	13,943	5.67%			
UNITED KINGDOM	12,203	4.96%	232,986	6.75%	-94.76%
ETHIOPIA	7,230	2.94%	28,603	0.82%	-74.72%
RUSSIAN FEDERATION	6,966	2.83%	188,945	5.48%	-96.31%
AUSTRIA	2,559	1.04%	107,534	3.11%	-97.62%
THAILAND	2,239	0.91%	40,546	1.17%	-94.47%
CANADA	2,216	0.90%	40,639	1.17%	-94.54%
GREECE	2,093	0.85%	87,034	2.52%	-97.59%
GEORGIA	2,072	0.84%	57,815	1.67%	-96.41%
MOLDOVA	2,066	0.84%	9,616	0.27%	-78.51%
INDIA	2,003	0.81%	40,011	1.16%	-94.99%
NETHERLANDS	1,925	0.78%	105,635	3.06%	-98.17%
ROMANIA	1,787	0.72%	116,241	3.37%	-98.46%
CHINA	1,648	0.67%	40,337	1.16%	-95.91%
CYPRUS	1,620	0.65%	74,205	2.15%	-97.81%
BULGARIA	1,582	0.64%	74,822	2.17%	-97.88%
SEYCHELLES	1,547	0.62%	3,955	0.11%	-60.88%





Int'l Accumulated Passenger Traffic

Distribution by Countries

Countries	Accumulated 2021		Accumulated 2020		
	Passengers	Rate of Total	Passengers	Rate of Total	Rate of Change
SWITZERLAND	1,405	0.57%	108,661	3.15%	-98.70%
SPAIN	1,155	0.47%	150,935	4.37%	-99.23%
BELARUS	1,060	0.43%	9,548	0.27%	-88.89%
ITALY	1,034	0.42%	174,998	5.07%	-99.40%
HUNGARY	1,011	0.41%	95,301	2.76%	-98.93%
JORDAN	595	0.24%	29,724	0.86%	-97.99%
EGYPT	405	0.16%	9,595	0.27%	-95.77%
POLAND	386	0.15%	130,207	3.77%	-99.70%
BELGIUM	361	0.14%	45,600	1.32%	-99.20%
SERBIA	259	0.10%	8,785	0.25%	-97.05%
AZERBAIJAN	222	0.09%	8,636	0.25%	-97.42%
PANAMA	200	0.08%			
GHANA	197	0.08%			
CZECH REPUBLIC	192	0.07%	46,804	1.35%	-99.58%
EQUATORIAL GUINEA	189	0.07%			
UZBEKISTAN	155	0.06%	6,596	0.19%	-97.65%
BRAZIL	134	0.05%	15,433	0.44%	-99.13%
LITHUANIA	130	0.05%	14,191	0.41%	-99.08%
GIBRALTAR	103	0.04%	8		
OTHERS	926	0.37%	87,106	2.52%	-98.93%
TOTAL	245,647		3,447,737		-92.87%





International Passenger Traffic

Distribution by First Destination for March

Destination	March 2021		March 2020		
	Passengers	Rate of Total	Passengers	Rate of Total	Rate of Change
NEW YORK - J.F.KENNEDY	19,901	14.90%	21,446	4.54%	-7.20%
FRANKFURT	15,454	11.57%	7,429	1.57%	108.02%
NEW YORK - NEWARK	14,696	11.00%	33,105	7.01%	-55.60%
KIEV, KYIV-BORISPOL	13,256	9.92%	13,569	2.87%	-2.30%
PARIS-CHARLES DE GAULLE	13,206	9.88%	15,008	3.18%	-12.00%
LONDON - HEATHROW	7,745	5.79%	24,582	5.20%	-68.49%
ISTANBUL	6,804	5.09%	31,126	6.59%	-78.14%
ISTANBUL-SABIHA GOKCHEN	6,687	5.00%	11,672	2.47%	-42.70%
DUBAI	3,581	2.68%			
ADDIS ABABA	3,265	2.44%	6,304	1.33%	-48.20%
MOSCOW	2,850	2.13%	23,128	4.90%	-87.67%
TORONTO	1,310	0.98%	9,549	2.02%	-86.28%
BATUMI	1,208	0.90%	1,742	0.36%	-30.65%
MAHE SEYCHELLES INTL	1,195	0.89%	346	0.07%	
BUCHAREST - OTOPENI	1,181	0.88%	11,050	2.34%	-89.31%
SOFIA	1,155	0.86%	10,185	2.15%	-88.65%
VIENNA	1,043	0.78%	8,579	1.81%	-87.84%
SAN FRANCISCO	963	0.72%	8,581	1.81%	-88.77%
AMSTERDAM	914	0.68%	16,842	3.56%	-94.57%
MOSCOW-DOMODEDOVO	872	0.65%	2,139	0.45%	-59.23%
LARNACA	857	0.64%	3,869	0.81%	-77.84%
BANGKOK INTL.-SUARNABHUM	829	0.62%	804	0.17%	3.10%





International Passenger Traffic

Distribution by First Destination for March

Destination	March 2021		March 2020		
	Passengers	Rate of Total	Passengers	Rate of Total	Rate of Change
CHISINAU	797	0.59%	2,857	0.60%	-72.10%
BERLIN BRANDENBURG INTL	797	0.59%			
MIAMI INTERNATIONAL	711	0.53%	3,841	0.81%	-81.48%
TBILISI	678	0.50%	5,689	1.20%	-88.08%
DELHI	657	0.49%	4,110	0.87%	-84.01%
ZURICH	644	0.48%	6,657	1.41%	-90.32%
ATHENS	634	0.47%	7,062	1.49%	-91.02%
PARIS-ORLY	616	0.46%	5,517	1.16%	-88.83%
MADRID	574	0.42%	11,769	2.49%	-95.12%
BUDAPEST	536	0.40%	9,614	2.03%	-94.42%
MINSK	495	0.37%	1,865	0.39%	-73.45%
LUTON	417	0.31%	10,774	2.28%	-96.12%
LOS ANGELES	370	0.27%	3,232	0.68%	-88.55%
HONG KONG INT'L	347	0.25%	137	0.02%	153.28%
ROME - FIUMICINO	338	0.25%	2,116	0.44%	-84.02%
SHANGHAI PUDONG	256	0.19%			
BEIJING	254	0.19%			
BELGRADE	235	0.17%	1,302	0.27%	-81.95%
BANGALORE	202	0.15%			
PANAMA CITY	200	0.14%			
MUNICH	195	0.14%	5,221	1.10%	-96.26%
BATA AIRPORT	189	0.14%			





International Passenger Traffic

Distribution by First Destination for March

Destination	March 2021		March 2020		
	Passengers	Rate of Total	Passengers	Rate of Total	Rate of Change
CHENGDU	186	0.13%			
HOUSTON INTERCONTINENTAL	159	0.11%	25		
AMMAN (QUEEN ALIA INT'L)	157	0.11%	3,821	0.80%	-95.89%
BAKU HEYDAR ALIYEV INT'L	157	0.11%	1,289	0.27%	-87.82%
TASHKENT	155	0.11%	688	0.14%	-77.47%
SHARM EL SHEIKH	154	0.11%	2		
DUBAI AL MAKTOUM INT AP	150	0.11%			
PAPHOS	138	0.10%	3,682	0.78%	-96.25%
ANKARA-ESENBUGA	135	0.10%			
ODESA	134	0.10%	1,982	0.41%	-93.23%
SAO PAULO (GUARULHOS INT')	134	0.10%	4,688	0.99%	-97.14%
PRAGUE-RUZYNE	129	0.09%	5,671	1.20%	-97.72%
EDINBURGH	124	0.09%			
MOSCOW-VNUKOVO	114	0.08%	46		147.82%
MUMBAI	107	0.08%	2,109	0.44%	-94.92%
AL BATEEN EXECUTIVE AP	105	0.07%			
OTHERS	2,194	1.64%	105,086	22.26%	-97.91%
TOTAL	133,546		471,907		-71.70%





Int'l Accumulated Passenger Traffic

Distribution by First Destination

Destination	Accumulated 2021		Accumulated 2020		Rate of Change
	Passengers	Rate of Total	Passengers	Rate of Total	
NEW YORK - J.F.KENNEDY	32,001	13.02%	101,405	2.94%	-68.44%
FRANKFURT	29,461	11.99%	76,291	2.21%	-61.38%
NEW YORK - NEWARK	25,437	10.35%	144,652	4.19%	-82.41%
PARIS-CHARLES DE GAULLE	19,994	8.13%	127,476	3.69%	-84.31%
KIEV,KYIV-BORISPOL	19,727	8.03%	77,611	2.25%	-74.58%
ISTANBUL-SABIHA GOKCHEN	15,837	6.44%	91,168	2.64%	-82.62%
ISTANBUL	15,267	6.21%	190,184	5.51%	-91.97%
DUBAI	13,472	5.48%			
LONDON - HEATHROW	10,821	4.40%	133,682	3.87%	-91.90%
ADDIS ABABA	7,230	2.94%	28,603	0.82%	-74.72%
MOSCOW	4,689	1.90%	112,623	3.26%	-95.83%
SAN FRANCISCO	2,783	1.13%	42,935	1.24%	-93.51%
VIENNA	2,559	1.04%	104,798	3.03%	-97.55%
PARIS-ORLY	2,410	0.98%	54,874	1.59%	-95.60%
BANGKOK INTL.-SUARNABHUM	2,239	0.91%	40,546	1.17%	-94.47%
TORONTO	2,193	0.89%	40,522	1.17%	-94.58%
MOSCOW-DOMODEDOVO	2,095	0.85%	13,403	0.38%	-84.36%
CHISINAU	2,066	0.84%	9,616	0.27%	-78.51%
ATHENS	1,973	0.80%	74,985	2.17%	-97.36%
AMSTERDAM	1,912	0.77%	98,343	2.85%	-98.05%
MIAMI INTERNATIONAL	1,785	0.72%	18,850	0.54%	-90.53%
BUCHAREST - OTOPENI	1,762	0.71%	96,781	2.80%	-98.17%





Int'l Accumulated Passenger Traffic

Distribution by First Destination

Destination	Accumulated 2021		Accumulated 2020		
	Passengers	Rate of Total	Passengers	Rate of Total	Rate of Change
SOFIA	1,582	0.64%	64,671	1.87%	-97.55%
DELHI	1,559	0.63%	20,786	0.60%	-92.49%
MAHE SEYCHELLES INTL	1,547	0.62%	3,955	0.11%	-60.88%
LARNACA	1,458	0.59%	39,733	1.15%	-96.33%
BERLIN BRANDENBURG INTL	1,375	0.55%			
ZURICH	1,283	0.52%	66,335	1.92%	-98.06%
BATUMI	1,208	0.49%	17,244	0.50%	-92.99%
LOS ANGELES	1,113	0.45%	14,945	0.43%	-92.55%
LUTON	1,096	0.44%	70,201	2.03%	-98.43%
MINSK	1,060	0.43%	9,548	0.27%	-88.89%
BUDAPEST	1,011	0.41%	89,157	2.58%	-98.86%
MADRID	990	0.40%	98,030	2.84%	-98.99%
TBILISI	864	0.35%	40,571	1.17%	-97.87%
ODESA	747	0.30%	12,218	0.35%	-93.88%
HONG KONG INT'L	610	0.24%	27,453	0.79%	-97.77%
SHANGHAI PUDONG	598	0.24%			
ROME - FIUMICINO	530	0.21%	101,524	2.94%	-99.47%
HOUSTON INTERCONTINENTAL	488	0.19%	45		
AMMAN (QUEEN ALIA INT'L)	380	0.15%	29,523	0.85%	-98.71%
BANGALORE	319	0.12%			
BRUSSELS	314	0.12%	32,764	0.95%	-99.04%
CHICAGO - O'HARE	276	0.11%			





Int'l Accumulated Passenger Traffic

Distribution by First Destination

Destination	Accumulated 2021		Accumulated 2020		
	Passengers	Rate of Total	Passengers	Rate of Total	Rate of Change
BELGRADE	259	0.10%	8,785	0.25%	-97.05%
BEIJING	254	0.10%	8,451	0.24%	-96.99%
MUNICH	231	0.09%	51,768	1.50%	-99.55%
AL BATEEN EXECUTIVE AP	219	0.08%			
KATOWICE	206	0.08%	10,440	0.30%	-98.02%
DUBAI AL MAKTOUM INT AP	205	0.08%			
PANAMA CITY	200	0.08%			
ACCRA-KOTOKA	197	0.08%			
CAIRO INTERNATIONAL	194	0.07%	7,865	0.22%	-97.53%
SHARM EL SHEIKH	191	0.07%	25		
BATA AIRPORT	189	0.07%			
CHENGDU	186	0.07%	2,513	0.07%	-92.59%
MOSCOW-VNUKOVO	168	0.06%	459	0.01%	-63.39%
BAKU HEYDAR ALIYEV INT'L	165	0.06%	8,636	0.25%	-98.08%
PAPHOS	162	0.06%	34,442	0.99%	-99.52%
TASHKENT	155	0.06%	6,596	0.19%	-97.65%
ANTALYA	147	0.05%	36,303	1.05%	-99.59%
WARSAW	140	0.05%	65,365	1.89%	-99.78%
LYON - SATOLAS	137	0.05%	14,240	0.41%	-99.03%
ANKARA-ESENBUGA	135	0.05%			
SAO PAULO (GUARULHOS INT')	134	0.05%	15,433	0.44%	-99.13%
PRAGUE-RUZYNE	132	0.05%	46,779	1.35%	-99.71%





Int'l Accumulated Passenger Traffic

Distribution by First Destination

Destination	Accumulated 2021		Accumulated 2020		
	Passengers	Rate of Total	Passengers	Rate of Total	Rate of Change
MILAN-MALPENSA	126	0.05%	38,453	1.11%	-99.67%
MUMBAI	125	0.05%	12,679	0.36%	-99.01%
EDINBURGH	124	0.05%			
DALAMAN	113	0.04%	572	0.01%	-80.24%
GIBRALTAR	103	0.04%	8		
GENEVA	101	0.04%	31,072	0.90%	-99.67%
OTHERS	2,828	1.15%	628,802	18.23%	-99.55%
TOTAL	245,647		3,447,737		-92.87%



Cargo Activity





Cargo Handling

Distribution by Transporter

Transporter	March 2021 (Ton)	March 2020 (Ton)	Rate of Change
Cargo on Passenger Aircrafts - Incoming	2,100	4,691	-55.23%
Cargo on Passenger Aircrafts - Outgoing	1,893	3,815	-50.38%
Total Cargo on Passenger Aircrafts	3,993	8,506	-53.05%
Cargo on Cargo Aircrafts - Incoming	18,099	11,372	59.15%
Cargo on Cargo Aircrafts - Outgoing	10,532	7,184	46.60%
Total Cargo on Cargo Aircrafts	28,632	18,557	54.29%
Total	32,625	27,063	20.55%

Distribution by Months

Month	2021 (ton)			2020 (ton)			Rate of Change
	Cargo	Mail	Total	Cargo	Mail	Total	
January	28,571	632	29,203	28,568	1,395	29,964	-2.53%
February	26,579	323	26,902	28,188	1,033	29,221	-7.93%
March	32,075	550	32,625	26,528	535	27,063	20.55%
Total	87,225	1,505	88,730	83,284	2,963	86,248	2.87%





Cargo Handling on Passenger Aircrafts

Distribution by Airline for March

		March 2021				March 2020				
Airline	Incoming Cargo (Ton)	Outgoing Cargo (Ton)	Cargo (Ton)	Rate of Total	Incoming Cargo (Ton)	Outgoing Cargo (Ton)	Cargo (Ton)	Rate of Total	Rate of Change	
LY EL AL ISRAEL AIRLINES	621	678	1,298	32.50%	1,375	1,293	2,667	31.35%	-51.33%	
UA UNITED AIRLINES	415	393	808	20.23%	924	1,024	1,949	22.91%	-58.54%	
DL DELTA AIRLINES	279	257	536	13.42%	87	34	121	1.42%		
TK TURKISH AIRLINES	199	37	235	5.88%	475	179	654	7.68%	-64.06%	
VS VIRGIN ATLANTIC AIRWAYS	117	108	224	5.60%	96	85	181	2.12%	23.75%	
ET ETHIOPIAN AIRLINES	138	84	222	5.55%	36	47	82	0.96%	170.73%	
BA BRITISH AIRWAYS PLC	64	90	154	3.85%	242	236	479	5.63%	-67.84%	
AC AIR CANADA	66	53	119	2.98%	189	148	336	3.95%	-64.58%	
SU AEROFLOT RUSSIAN AIRLINES	42	72	115	2.88%	426	301	727	8.54%	-84.18%	
LX SWISS INT'L AIRLINES	43	39	81	2.02%	186	85	271	3.18%	-70.11%	
CX CATHAY PACIFIC AIRWAYS	22	22	45	1.12%						
PC PEGASUS AIRLINES	26	10	36	0.90%	53	24	78	0.91%	-53.84%	
PS UKRAINE INTL AIR	19	10	29	0.72%	19	21	40	0.47%	-27.50%	
AF AIR FRANCE	17	9	26	0.65%	2	6	9	0.10%	188.88%	
AI AIR INDIA	3	11	14	0.35%	114	73	187	2.19%	-92.51%	
6H ISRAIR AIRLINES		10	10	0.25%		4	4	0.04%	150.00%	
LH LUFTHANSA	9	1	10	0.25%	12	16	28	0.32%	-64.28%	
FZ FLYDUBAI	7	2	9	0.22%						
IB IBERIA	1	4	5	0.12%	54	15	69	0.81%	-92.75%	
HM AIR SEYCHELLES	3	1	4	0.10%	3		3	0.03%	33.33%	
RO TAROM - RUMANIAN AIR TRAN	3		4	0.10%	11	5	16	0.18%	-75.00%	
OS AUSTRIAN AIRLINES	2		2	0.05%	3	2	5	0.05%	-60.00%	





Cargo Handling on Passenger Aircrafts

Distribution by Airline for March

		March 2021				March 2020				
Airline	Incoming Cargo (Ton)	Outgoing Cargo (Ton)	Cargo (Ton)	Rate of Total	Incoming Cargo (Ton)	Outgoing Cargo (Ton)	Cargo (Ton)	Rate of Total	Rate of Change	
IZ ARKIA ISRAELI AIRLINES		1	2	0.05%						
B2 BELAVIA AIRLINE	1	1	2	0.05%	2	7	9	0.10%	-77.77%	
OTHERS	3	2	4	0.10%	382	208	590	6.93%	-99.32%	
TOTAL	2,100	1,893	3,993		4,691	3,815	8,506		-53.05%	





Accumulated Cargo Handling on Passengers Aircrafts

Distribution by Airline

		Accumulated 2021				Accumulated 2020				
Airline		Incoming Cargo (Ton)	Outgoing Cargo (Ton)	Cargo (Ton)	Rate of Total	Incoming Cargo (Ton)	Outgoing Cargo (Ton)	Cargo (Ton)	Rate of Total	Rate of Change
LY	EL AL ISRAEL AIRLINES	1,317	1,459	2,776	29.45%	6,427	6,129	12,557	32.04%	-77.89%
UA	UNITED AIRLINES	990	1,222	2,211	23.45%	2,952	3,362	6,314	16.11%	-64.98%
DL	DELTA AIRLINES	613	651	1,265	13.42%	482	199	681	1.73%	85.75%
ET	ETHIOPIAN AIRLINES	386	254	639	6.77%	138	67	205	0.52%	
TK	TURKISH AIRLINES	435	154	589	6.24%	2,256	785	3,041	7.76%	-80.63%
VS	VIRGIN ATLANTIC AIRWAYS	197	189	386	4.09%	586	444	1,029	2.62%	-62.48%
CX	CATHAY PACIFIC AIRWAYS	170	94	264	2.80%	478	379	857	2.18%	-69.19%
LX	SWISS INT'L AIRLINES	136	106	242	2.56%	1,496	821	2,317	5.91%	-89.55%
SU	AEROFLOT RUSSIAN AIRLINES	101	135	236	2.50%	1,481	1,389	2,870	7.32%	-91.77%
AC	AIR CANADA	107	104	211	2.23%	867	663	1,531	3.90%	-86.21%
BA	BRITISH AIRWAYS PLC	64	90	154	1.63%	1,062	684	1,746	4.45%	-91.17%
PC	PEGASUS AIRLINES	48	44	92	0.97%	180	114	293	0.74%	-68.60%
FZ	FLYDUBAI	50	9	59	0.62%					
PS	UKRAINE INTL AIR	33	18	51	0.54%	65	84	150	0.38%	-66.00%
AI	AIR INDIA	18	25	44	0.46%	466	250	715	1.82%	-93.84%
AF	AIR FRANCE	20	22	42	0.44%	32	67	99	0.25%	-57.57%
LH	LUFTHANSA	23	8	31	0.32%	137	151	287	0.73%	-89.19%
6H	ISRAIR AIRLINES	1	17	17	0.18%		19	19	0.04%	-10.52%
HM	AIR SEYCHELLES	10	1	11	0.11%	8	2	9	0.02%	22.22%
B2	BELAVIA AIRLINE	3	3	6	0.06%	7	23	30	0.07%	-80.00%
IB	IBERIA	1	4	5	0.05%	709	218	927	2.36%	-99.46%
RO	TAROM - RUMANIAN AIR TRAN	4	1	5	0.05%	37	27	65	0.16%	-92.30%





Accumulated Cargo Handling on Passengers Aircrafts

Distribution by Airline

		Accumulated 2021				Accumulated 2020				
Airline		Incoming Cargo (Ton)	Outgoing Cargo (Ton)	Cargo (Ton)	Rate of Total	Incoming Cargo (Ton)	Outgoing Cargo (Ton)	Cargo (Ton)	Rate of Total	Rate of Change
OS	AUSTRIAN AIRLINES	5		5	0.05%	26	21	47	0.11%	-89.36%
IZ	ARKIA ISRAELI AIRLINES		3	4	0.04%					
	OTHERS	8	71	78	0.82%	2,310	1,085	3,395	8.66%	-97.70%
	TOTAL	4,742	4,683	9,425		22,199	16,984	39,185		-75.94%





Cargo Handling on Cargo Aircrafts

Distribution by Airlines March

		March 2021				March 2020				
Airline		Incoming Cargo (Ton)	Outgoing Cargo (Ton)	Cargo (Ton)	Rate of Total	Incoming Cargo (Ton)	Outgoing Cargo (Ton)	Cargo (Ton)	Rate of Total	Rate of Change
ICL	C.A.L ISRAELI CARGO	4,388	2,451	6,839	23.88%	1,632	1,215	2,847	15.34%	140.21%
LY	EL AL ISRAEL AIRLINES	2,653	2,120	4,773	16.67%	1,800	873	2,674	14.40%	78.49%
TK	TURKISH AIRLINES	2,606	827	3,433	11.99%	1,416	612	2,028	10.92%	69.28%
QY	EUROPEAN AIR TRANSPORT	1,178	919	2,097	7.32%	1,055	689	1,744	9.39%	20.24%
LH	LUFTHANSA	1,161	860	2,021	7.05%	699	597	1,295	6.97%	56.06%
MNB	MNG CARGO AIRLINES	1,657	257	1,914	6.68%	955	276	1,230	6.62%	55.60%
AZG	SILK WAY WEST AIRLINES	884	915	1,798	6.27%	989	873	1,862	10.03%	-3.43%
FX	FEDERAL EXPRESS	519	418	938	3.27%	417	402	818	4.40%	14.66%
HU	HAINAN AIRLINES	669	5	674	2.35%					
IB	IBERIA	370	133	503	1.75%					
3V	ASL AIRLINES BELGIUM	313	171	484	1.69%	326	213	540	2.90%	-10.37%
CX	CATHAY PACIFIC AIRWAYS	244	214	458	1.59%					
UA	UNITED AIRLINES	193	252	445	1.55%					
ET	ETHIOPIAN AIRLINES	222	171	393	1.37%					
BA	BRITISH AIRWAYS PLC	156	195	350	1.22%	3	17	21	0.11%	
3U	SICHUAN AIRLINES	205	74	279	0.97%					
SU	AEROFLOT RUSSIAN AIRLINES	120	148	268	0.93%					
VS	VIRGIN ATLANTIC AIRWAYS	128	101	229	0.79%					
PC	PEGASUS AIRLINES	117	49	166	0.57%					
DL	DELTA AIRLINES	63	75	138	0.48%					
LX	SWISS INT'L AIRLINES	59	63	123	0.42%					
KE	KOREAN AIR	77	25	102	0.35%					





Cargo Handling on Cargo Aircrafts

Distribution by Airlines March

		March 2021				March 2020				
Airline		Incoming Cargo (Ton)	Outgoing Cargo (Ton)	Cargo (Ton)	Rate of Total	Incoming Cargo (Ton)	Outgoing Cargo (Ton)	Cargo (Ton)	Rate of Total	Rate of Change
AC	AIR CANADA	35	43	79	0.27%					
M4	POSTE AIR CARGO	28	13	41	0.14%					
F7	I FLY LTD	40		40	0.13%					
	OTHERS	15	32	47	0.16%	2,079	1,418	3,497	18.84%	-98.65%
	TOTAL	18,099	10,532	28,632		11,372	7,184	18,557		54.29%





Accumulated Cargo Handling on Cargo Aircrafts

Distribution by Airline

		Accumulated 2021				Accumulated 2020				
Airline		Incoming Cargo (Ton)	Outgoing Cargo (Ton)	Cargo (Ton)	Rate of Total	Incoming Cargo (Ton)	Outgoing Cargo (Ton)	Cargo (Ton)	Rate of Total	Rate of Change
ICL	C.A.L ISRAELI CARGO	11,011	6,178	17,188	21.67%	5,972	5,174	11,146	23.68%	54.20%
LY	EL AL ISRAEL AIRLINES	8,030	5,448	13,478	16.99%	4,742	2,660	7,402	15.72%	82.08%
TK	TURKISH AIRLINES	7,001	1,974	8,975	11.31%	3,025	1,213	4,237	9.00%	111.82%
QY	EUROPEAN AIR TRANSPORT	3,396	2,439	5,834	7.35%	2,467	1,838	4,304	9.14%	35.54%
LH	LUFTHANSA	3,019	2,108	5,127	6.46%	1,675	1,368	3,042	6.46%	68.54%
AZG	SILK WAY WEST AIRLINES	2,296	2,569	4,865	6.13%	2,023	1,853	3,876	8.23%	25.51%
MN B	MNG CARGO AIRLINES	3,678	770	4,448	5.60%	2,605	817	3,422	7.27%	29.98%
FX	FEDERAL EXPRESS	1,463	1,114	2,577	3.24%	1,101	1,016	2,117	4.49%	21.72%
HU	HAINAN AIRLINES	2,434	14	2,448	3.08%					
UA	UNITED AIRLINES	911	1,204	2,115	2.66%					
3V	ASL AIRLINES BELGIUM	806	478	1,284	1.61%	847	493	1,340	2.84%	-4.17%
BA	BRITISH AIRWAYS PLC	558	684	1,242	1.56%	3	17	21	0.04%	
CX	CATHAY PACIFIC AIRWAYS	587	509	1,096	1.38%					
VS	VIRGIN ATLANTIC AIRWAYS	508	469	977	1.23%					
ET	ETHIOPIAN AIRLINES	568	376	945	1.19%					
DL	DELTA AIRLINES	395	482	877	1.10%					
SU	AEROFLOT RUSSIAN AIRLINES	364	477	841	1.06%					
IB	IBERIA	581	253	834	1.05%					
3U	SICHUAN AIRLINES	397	134	531	0.66%					
F7	I FLY LTD	377	42	419	0.52%					
LX	SWISS INT'L AIRLINES	188	202	390	0.49%					
AC	AIR CANADA	120	229	349	0.44%					





Accumulated Cargo Handling on Cargo Aircrafts

Distribution by Airline

		Accumulated 2021				Accumulated 2020				
Airline		Incoming Cargo (Ton)	Outgoing Cargo (Ton)	Cargo (Ton)	Rate of Total	Incoming Cargo (Ton)	Outgoing Cargo (Ton)	Cargo (Ton)	Rate of Total	Rate of Change
PC	PEGASUS AIRLINES	214	118	333	0.41%					
KE	KOREAN AIR	97	223	320	0.40%					
M4	POSTE AIR CARGO	28	13	41	0.05%					
	OTHERS	1,071	699	1,770	2.23%	3,692	2,463	6,154	13.07%	-71.23%
	TOTAL	50,099	29,204	79,305		28,151	18,911	47,063		68.50%





Cargo Handling on Cargo Aircrafts

Distribution by Countries for March

Country	March 2021				March 2020				
	Incoming Cargo (Ton)	Outgoing Cargo (Ton)	Cargo (Ton)	Rate of Total	Incoming Cargo (Ton)	Outgoing Cargo (Ton)	Cargo (Ton)	Rate of Total	Rate of Change
BELGIUM	4,453	4,211	8,664	30.25%	4,125	3,484	7,610	41.00%	13.85%
TURKEY	4,272	1,133	5,405	18.87%	2,323	1,166	3,488	18.79%	54.95%
GERMANY	2,763	1,287	4,050	14.14%	2,099	1,214	3,313	17.85%	22.24%
CHINA	2,591	720	3,311	11.56%					
AZERBAIJAN	884	915	1,798	6.27%	989	873	1,862	10.03%	-3.43%
NORWAY	804	40	845	2.95%	924		924	4.97%	-8.54%
UNITED STATES	337	328	664	2.31%	31		31	0.16%	
EGYPT		603	603	2.10%					
CYPRUS	527	66	593	2.07%	632	19	651	3.50%	-8.90%
UNITED KINGDOM	290	302	592	2.06%	33	35	68	0.36%	
SPAIN	370	133	503	1.75%	117		117	0.63%	
ETHIOPIA	222	171	393	1.37%					
FRANCE	89	284	373	1.30%	95	100	195	1.05%	91.28%
RUSSIAN FEDERATION	160	148	308	1.07%		74	74	0.39%	
AUSTRIA	136		136	0.47%		172	172	0.92%	-20.93%
SWITZERLAND	59	63	123	0.42%					
ITALY	83	31	114	0.39%					
CANADA	35	43	79	0.27%					
SOUTH KOREA	13	30	43	0.15%					
OTHERS	11	22	33	0.11%	4	47	52	0.28%	-36.53%
TOTAL	18,099	10,532	28,632		11,372	7,184	18,557		54.29%





Accumulated Cargo Handling on Cargo Aircrafts

Distribution by Countries

Countries	Accumulated 2021				Accumulated 2020				
	Incoming Cargo (Ton)	Outgoing Cargo (Ton)	Cargo (Ton)	Rate of Total	Incoming Cargo (Ton)	Outgoing Cargo (Ton)	Cargo (Ton)	Rate of Total	Rate of Change
BELGIUM	11,289	11,330	22,620	28.52%	9,721	9,959	19,681	41.81%	14.93%
TURKEY	10,786	2,838	13,624	17.17%	5,581	2,888	8,469	17.99%	60.86%
GERMANY	7,308	3,576	10,884	13.72%	5,084	3,132	8,216	17.45%	32.47%
CHINA	7,596	1,692	9,288	11.71%					
AZERBAIJAN	2,296	2,569	4,865	6.13%	1,981	1,853	3,834	8.14%	26.89%
UNITED STATES	1,923	1,693	3,616	4.55%	72		72	0.15%	
NORWAY	2,786	40	2,826	3.56%	2,534		2,534	5.38%	11.52%
UNITED KINGDOM	1,156	1,201	2,357	2.97%	33	35	68	0.14%	
CYPRUS	1,337	200	1,537	1.93%	1,997	19	2,015	4.28%	-23.72%
RUSSIAN FEDERATION	741	519	1,260	1.58%		74	74	0.15%	
EGYPT		1,240	1,240	1.56%	4		4		
SPAIN	890	258	1,147	1.44%	789		789	1.67%	45.37%
FRANCE	308	723	1,030	1.29%	228	326	555	1.17%	85.58%
ETHIOPIA	568	376	945	1.19%					
SWITZERLAND	188	202	390	0.49%					
AUSTRIA	373		373	0.47%	3	386	389	0.82%	-4.11%
CANADA	124	229	353	0.44%					
ITALY	201	90	291	0.36%	31	30	60	0.12%	
SOUTH KOREA	36	238	274	0.34%		39	39	0.08%	
OTHERS	193	192	386	0.48%	93	172	265	0.56%	45.66%
TOTAL	50,099	29,204	79,305		28,151	18,911	47,063		68.50%



Domestic Activity

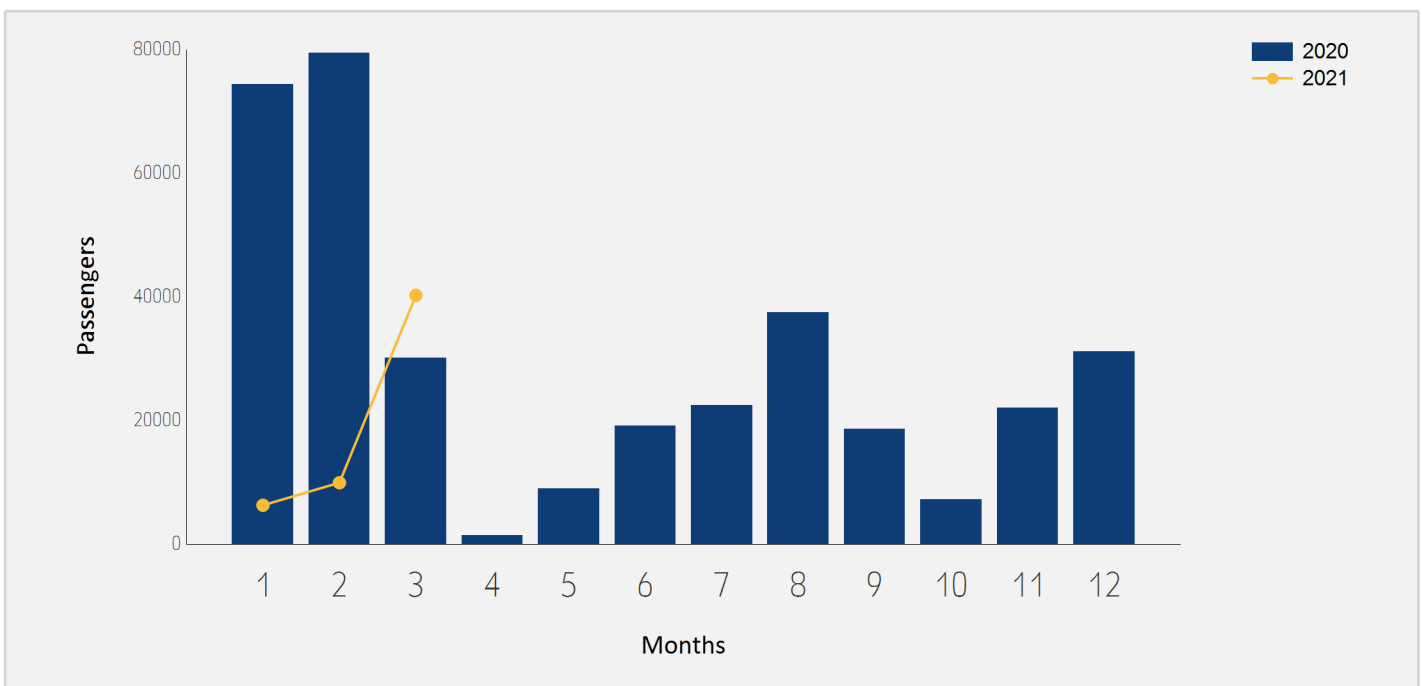




Domestic Passenger Traffic

Distribution by Months

Month	2021	2020	Rate of Change
January	6,294	74,380	-91.53%
February	9,936	79,475	-87.49%
March	40,252	30,137	33.56%
Total	56,482	183,992	-69.30%

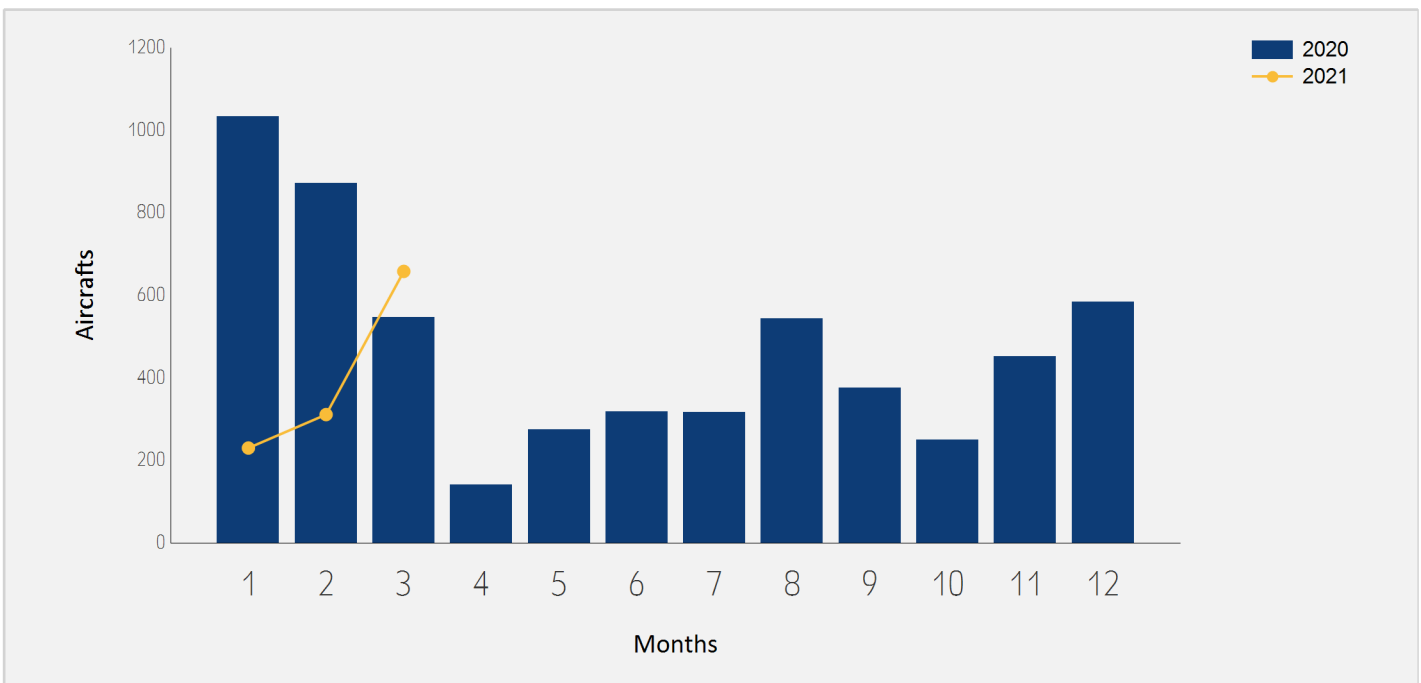




Domestic Aircrafts Traffic

Distribution by Months

Month	2021	2020	Rate of Change
January	230	1,033	-77.73%
February	311	871	-64.29%
March	658	547	20.29%
Total	1,199	2,451	-51.08%





Domestic Passengers Traffic

Distribution by Airlines for March

		March 2021		March 2020		
Airline		Passengers	Rate of Total	Passengers	Rate of Total	Rate of Change
6H	ISRAIR AIRLINES	20,990	52.14%	9,252	30.69%	126.86%
IZ	ARKIA ISRAELI AIRLINES	19,174	47.63%	20,855	69.20%	-8.06%
	OTHERS	88	0.21%	30	0.09%	193.33%
	TOTAL	40,252		30,137		33.56%

Accumulated Domestic Passengers Traffic

Distribution by Airlines

		Accumulated 2021		Accumulated 2020		
Airline		Passengers	Rate of Total	Passengers	Rate of Total	Rate of Change
6H	ISRAIR AIRLINES	34,902	61.79%	42,404	23.04%	-17.69%
IZ	ARKIA ISRAELI AIRLINES	21,430	37.94%	141,463	76.88%	-84.85%
	OTHERS	150	0.26%	125	0.06%	20.00%
	TOTAL	56,482		183,992		-69.30%





Domestic Passenger Traffic

Distribution by Destinations for March

Destination	March 2021		March 2020		Rate of Change
	Passengers	Rate of Total	Passengers	Rate of Total	
RAMON	40,159	99.76%	29,798	98.87%	34.77%
OTHERS	93	0.23%	339	1.12%	-72.56%
TOTAL	40,252		30,137		33.56%

Accumulated Domestic Passenger Traffic

Distribution by Destinations

Destination	Accumulated 2021		Accumulated 2020		Rate of Change
	Passengers	Rate of Total	Passengers	Rate of Total	
RAMON	56,331	99.73%	182,759	99.32%	-69.17%
OTHERS	151	0.26%	1,233	0.67%	-87.75%
TOTAL	56,482		183,992		-69.30%

