

Monthly Report

Ben Gurion International Airport

September 2022



Israel Airport Authority

Ben Gurion International Airport

Produced by the Industry & Management Department

This report is protected by copyright and is the exclusive property of the Israel Airports Authority.

It must be emphasized that the data in the report are based on the reports of the airlines, and received under their responsibility.

The information is intended for personal use, and therefore may not be quoted or passed on to any third party without written permission from the Israel Airports Authority.

In addition, no commercial use may be made of this report.

Edit Yehoshua

Activity Coordinator

Tel. +972-3-9752017

Email: edity@iaa.gov.il

Rachel Lehava

Manager, Industrial & Management Dep.

Tel. +972-3-9752019

Email: rachelle@iaa.gov.il

Yossi Tzemach

Head, Industrial & Management Dep.

Tel. +972-3-9752020

Email: yossiz@iaa.gov.il



Dear friends and partners,

I hereby respectfully submit for your review a report summarizing the aviation activity at Ben - Gurion International Airport in September 2022.

During the month, a total of 2,119,402 passengers on 14,017 international and domestic flights passed through Ben- Gurion Airport.

International passenger traffic in September totaled 2,050,829 passengers representing an increase of 178.94% compared to September 2021.

International aircraft traffic totaled 13,249 flights, representing an increase of 89.56% compared to September 2021.

International passenger traffic at Terminal3 this month totaled 1,865,778 passengers. Passengers on International flights from Terminal 1, serving departing passengers only, totaled 185,051.

On domestic flights 68,573 passengers passed through Ben- Gurion Airport this month, compared with 53,261 in September 2021, an increase of 28.74%.

Israeli airlines carried 627,214 passengers in this month, 30.58% of all travelers passing through Ben - Gurion Airport, an increase of 181.86% relative to the previous September.

The airlines which contributed the most to the increase of passenger traffic this month are: EL AL ISRAEL AIRLINES, WIZZAIR and TURKISH AIRLINES.

The Destination with the highest volume of activity was ANTALYA with a total of 96,675 passengers to and From.

The country with the highest volume of activity was the TURKEY, with 282,180 passengers, constituting 13.75% of all activity.

The Countries which contributed the most to the increase of passenger traffic this month are: TURKEY, GREECE and UNITED STATES.

Cargo transportation this month stood at 30,220 tons and reflects an increase of 5.06% compared to September 2021. 14,747 tons were transported in passenger aircraft and 15,473 tons in cargo aircraft.

Below you will find additional tables providing details about movements of aircraft, passengers and cargo at Ben - Gurion International Airport.

Sincerely yours,

Shmuel Zakay

Managing Director,

Ben-Gurion International Airport



Content



Aviation Activity

| | |
|--------------------------------|-------|
| Aviation Activity Summary | 1 |
| International Activity Summary | 2 - 4 |
| Domestic Activity Summary | 5 |



International Activity

| | |
|-----------------------------------|---------|
| Distribution By Months | 7 - 8 |
| Distribution By Airlines | 9 - 17 |
| Distribution By Countries | 18 - 23 |
| Distribution By First Destination | 24 - 37 |



Cargo Activity

| | |
|-----------------------------|---------|
| Distribution by Transporter | 39 |
| Distribution By Months | 39 |
| Distribution By Airlines | 40 - 44 |
| Distribution By Countries | 45 - 47 |



Domestic Activity

| | |
|------------------------------|---------|
| Distribution By Months | 49 - 50 |
| Distribution By Airlines | 51 |
| Distribution By Destinations | 52 |





Passengers and Aircrafts

Aviation Activity at Ben Gurion International Airport

International Activity

| | Current Month | | | Accumulated Since the beginning of the year | | |
|-------------------------|------------------|----------------|----------------|---|------------------|----------------|
| | September 2022 | September 2021 | Rate Of Change | 2022 | 2021 | Rate Of Change |
| Incoming Aircrafts | 6,623 | 3,498 | 89.33% | 48,845 | 22,050 | 121.51% |
| Outgoing Aircrafts | 6,626 | 3,491 | 89.80% | 48,833 | 22,041 | 121.55% |
| Total Aircrafts | 13,249 | 6,989 | 89.56% | 97,678 | 44,091 | 121.53% |
| Incoming Passengers | 1,016,529 | 356,887 | 184.83% | 6,827,154 | 1,818,174 | |
| Outgoing Passengers | 1,034,300 | 378,325 | 173.38% | 6,896,234 | 1,891,038 | |
| Transit Passengers | 1,173 | 5 | | 2,696 | 136 | |
| Total Passengers | 2,050,829 | 735,212 | 178.94% | 13,723,388 | 3,709,212 | |

Domestic Activity

| | Current Month | | | Accumulated Since the beginning of the year | | |
|------------|----------------|----------------|----------------|---|---------|----------------|
| | September 2022 | September 2021 | Rate Of Change | 2022 | 2021 | Rate Of Change |
| Aircrafts | 768 | 602 | 27.57% | 7,335 | 5,764 | 27.25% |
| Passengers | 68,573 | 53,261 | 28.74% | 575,060 | 428,684 | 34.14% |

International and Domestic Activity Summary

| | Current Month | | | Accumulated Since the beginning of the year | | |
|------------|----------------|----------------|----------------|---|-----------|----------------|
| | September 2022 | September 2021 | Rate Of Change | 2022 | 2021 | Rate Of Change |
| Aircrafts | 14,017 | 7,591 | 84.65% | 105,013 | 49,855 | 110.63% |
| Passengers | 2,119,402 | 788,473 | 168.79% | 14,298,448 | 4,137,896 | |





Passengers and Aircrafts

Int'l Aviation Activity at Ben Gurion International Airport by Terminal

Terminal 3

| | Current Month | | | Accumulated Since the beginning of the year | | |
|-------------------------|------------------|----------------|----------------|---|------------------|----------------|
| | September 2022 | September 2021 | Rate of Change | 2022 | 2021 | Rate of Change |
| Incoming Aircrafts | 6,623 | 3,378 | 96.06% | 48,642 | 21,708 | 124.07% |
| Outgoing Aircrafts | 5,607 | 3,425 | 63.70% | 42,429 | 21,814 | 94.50% |
| Total Aircrafts | 12,230 | 6,803 | 79.77% | 91,071 | 43,522 | 109.25% |
| Incoming Passengers | 1,016,529 | 346,227 | 193.60% | 6,804,940 | 1,789,023 | |
| Outgoing Passengers | 849,249 | 366,568 | 131.67% | 5,790,419 | 1,869,003 | |
| Transit Passengers | 1,173 | 5 | | 2,696 | 136 | |
| Total Passengers | 1,865,778 | 712,795 | 161.75% | 12,595,359 | 3,658,026 | |

Terminal 1

| | Current Month | | | Accumulated Since the beginning of the year | | |
|-------------------------|----------------|----------------|----------------|---|---------------|----------------|
| | September 2022 | September 2021 | Rate of Change | 2022 | 2021 | Rate of Change |
| Incoming Aircrafts | | 120 | -100.00% | 203 | 342 | -40.64% |
| Outgoing Aircrafts | 1,019 | 66 | | 6,404 | 227 | |
| Total Aircrafts | 1,019 | 186 | | 6,607 | 569 | |
| Incoming Passengers | | 10,660 | -100.00% | 22,214 | 29,151 | -23.79% |
| Outgoing Passengers | 185,051 | 11,757 | | 1,105,815 | 22,035 | |
| Total Passengers | 185,051 | 22,417 | | 1,128,029 | 51,186 | |





Passengers and Aircrafts

Int'l Aviation Activity at Ben Gurion International Airport by Flight Type

Schedule and Charter Flights

| | Current Month | | | Accumulated Since the beginning of the year | | |
|-------------------------|------------------|----------------|----------------|---|------------------|----------------|
| | September 2022 | September 2021 | Rate of Change | 2022 | 2021 | Rate of Change |
| Incoming Aircrafts | 5,846 | 2,814 | 107.74% | 41,627 | 15,234 | 173.25% |
| Outgoing Aircrafts | 5,856 | 2,823 | 107.43% | 41,710 | 15,329 | 172.09% |
| Total Aircrafts | 11,702 | 5,637 | 107.59% | 83,337 | 30,563 | 172.67% |
| Incoming Passengers | 1,014,585 | 355,820 | 185.13% | 6,811,763 | 1,807,480 | |
| Outgoing Passengers | 1,032,249 | 377,238 | 173.63% | 6,881,549 | 1,880,682 | |
| Transit Passengers | 1,173 | 5 | | 2,696 | 133 | |
| Total Passengers | 2,046,834 | 733,058 | 179.21% | 13,693,312 | 3,688,162 | |

Private Flights

| | Current Month | | | Accumulated Since the beginning of the year | | |
|-------------------------|----------------|----------------|----------------|---|---------------|----------------|
| | September 2022 | September 2021 | Rate of Change | 2022 | 2021 | Rate of Change |
| Incoming Aircrafts | 457 | 317 | 44.16% | 3,875 | 3,036 | 27.63% |
| Outgoing Aircrafts | 466 | 310 | 50.32% | 3,875 | 2,994 | 29.42% |
| Total Aircrafts | 923 | 627 | 47.20% | 7,750 | 6,030 | 28.52% |
| Incoming Passengers | 1,520 | 936 | 62.39% | 12,940 | 9,210 | 40.49% |
| Outgoing Passengers | 1,600 | 969 | 65.11% | 12,721 | 9,007 | 41.23% |
| Total Passengers | 3,120 | 1,905 | 63.77% | 25,661 | 18,217 | 40.86% |





Passengers and Aircrafts

Int'l Aviation Activity at Ben Gurion International Airport by Flight Type

Cargo Flights

| | Current Month | | | Accumulated Since the beginning of the year | | |
|-------------------------|----------------|----------------|----------------|---|--------------|----------------|
| | September 2022 | September 2021 | Rate of Change | 2022 | 2021 | Rate of Change |
| Incoming Aircrafts | 279 | 352 | -20.73% | 3,080 | 3,565 | -13.60% |
| Outgoing Aircrafts | 265 | 342 | -22.51% | 2,977 | 3,509 | -15.16% |
| Total Aircrafts | 544 | 694 | -21.61% | 6,057 | 7,074 | -14.37% |
| Incoming Passengers | 6 | 7 | -14.28% | 139 | 111 | 25.22% |
| Outgoing Passengers | 15 | 27 | -44.44% | 186 | 212 | -12.26% |
| Total Passengers | 21 | 34 | -38.23% | 325 | 323 | 0.61% |

Other Flights

| | Current Month | | | Accumulated Since the beginning of the year | | |
|-------------------------|----------------|----------------|----------------|---|--------------|----------------|
| | September 2022 | September 2021 | Rate of Change | 2022 | 2021 | Rate of Change |
| Incoming Aircrafts | 41 | 15 | 173.33% | 263 | 215 | 22.32% |
| Outgoing Aircrafts | 39 | 16 | 143.75% | 271 | 209 | 29.66% |
| Total Aircrafts | 80 | 31 | 158.06% | 534 | 424 | 25.94% |
| Incoming Passengers | 418 | 124 | | 2,312 | 1,373 | 68.39% |
| Outgoing Passengers | 436 | 91 | | 1,778 | 1,137 | 56.37% |
| Total Passengers | 854 | 215 | | 4,090 | 2,510 | 62.94% |





Passengers and Aircrafts

Domestic Aviation Activity at Ben Gurion International Airport by Flight Type

Schedule Flights

| | Current Month | | | Accumulated Since the beginning of the year | | |
|------------|----------------|----------------|----------------|---|---------|----------------|
| | September 2022 | September 2021 | Rate of Change | 2022 | 2021 | Rate of Change |
| Aircrafts | 739 | 566 | 30.56% | 6,660 | 4,839 | 37.63% |
| Passengers | 68,573 | 53,088 | 29.16% | 572,980 | 427,480 | 34.03% |

Private Flights

| | Current Month | | | Accumulated Since the beginning of the year | | |
|------------|----------------|----------------|----------------|---|------|----------------|
| | September 2022 | September 2021 | Rate of Change | 2022 | 2021 | Rate of Change |
| Aircrafts | 3 | 15 | -80.00% | 263 | 517 | -49.12% |
| Passengers | | 2 | -100.00% | 304 | 446 | -31.83% |

Other Flights

| | Current Month | | | Accumulated Since the beginning of the year | | |
|------------|----------------|----------------|----------------|---|------|----------------|
| | September 2022 | September 2021 | Rate of Change | 2022 | 2021 | Rate of Change |
| Aircrafts | 26 | 21 | 23.80% | 412 | 408 | 0.98% |
| Passengers | | 171 | -100.00% | 1,776 | 758 | 134.30% |





International Activity

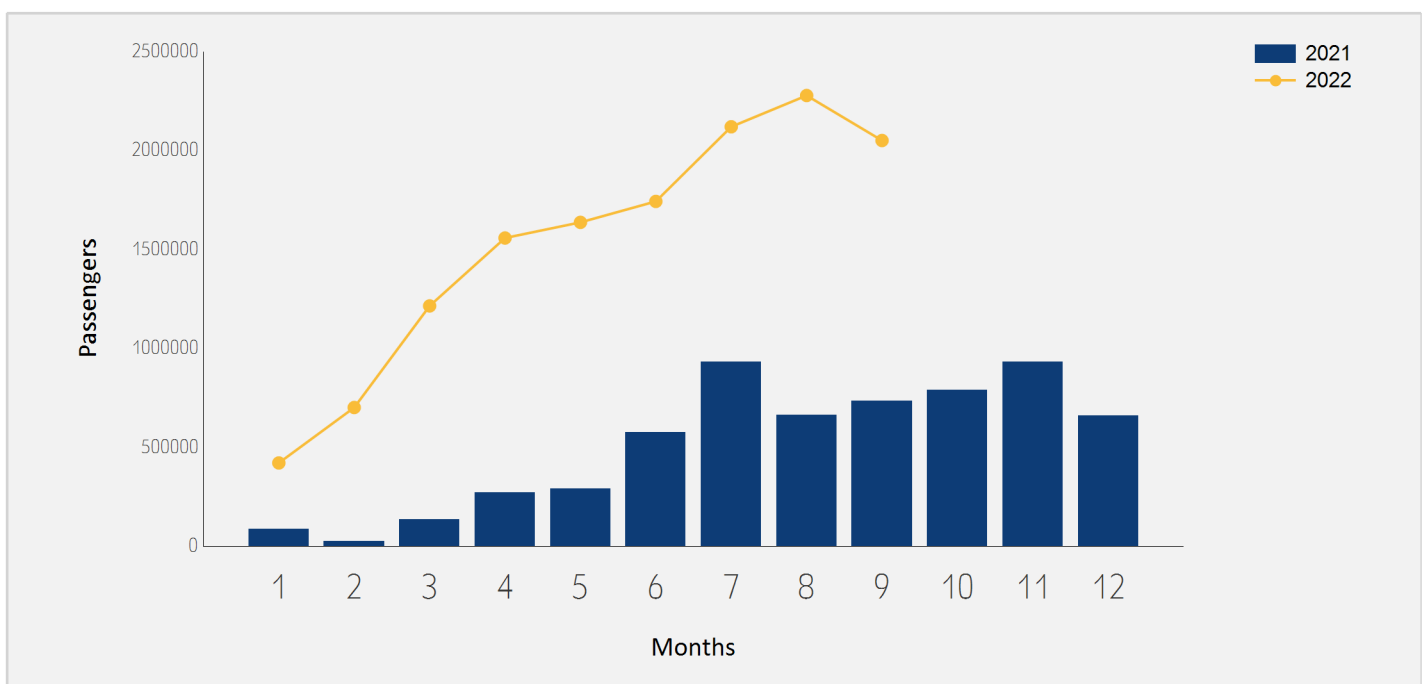




International Passenger Traffic

Distribution by Months

| Months | 2022 | 2021 | Rate of Change |
|--------------|-------------------|------------------|----------------|
| January | 420,563 | 87,196 | |
| February | 700,848 | 24,755 | |
| March | 1,214,559 | 133,322 | |
| April | 1,557,980 | 271,707 | |
| May | 1,637,028 | 290,037 | |
| June | 1,742,983 | 574,093 | |
| July | 2,120,280 | 931,834 | 127.53% |
| August | 2,278,318 | 661,056 | |
| September | 2,050,829 | 735,212 | 178.94% |
| Total | 13,723,388 | 3,709,212 | |

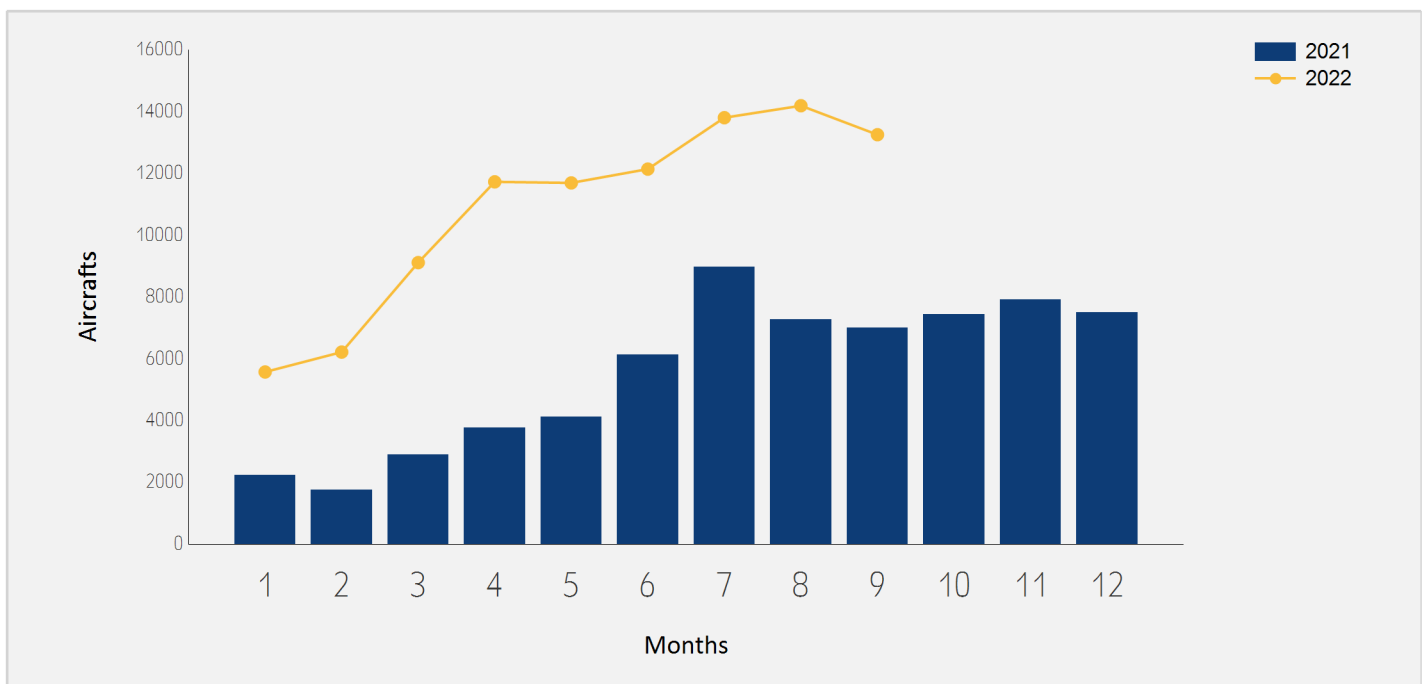




International Aircraft Traffic

Distribution by Months

| Months | 2022 | 2021 | Rate of Change |
|--------------|---------------|---------------|----------------|
| January | 5,571 | 2,225 | 150.38% |
| February | 6,214 | 1,753 | |
| March | 9,110 | 2,888 | |
| April | 11,724 | 3,761 | |
| May | 11,689 | 4,119 | 183.78% |
| June | 12,136 | 6,120 | 98.30% |
| July | 13,799 | 8,967 | 53.88% |
| August | 14,186 | 7,269 | 95.15% |
| September | 13,249 | 6,989 | 89.56% |
| Total | 97,678 | 44,091 | 121.53% |





International Passenger Traffic

Distribution by Airline for September

| | | September 2022 | | September 2021 | | |
|---------|------------------------|----------------|---------------|----------------|---------------|----------------|
| Airline | | Passengers | Rate of Total | Passengers | Rate of Total | Rate of Change |
| LY | EL AL ISRAEL AIRLINES | 432,811 | 21.10% | 144,500 | 19.65% | 199.52% |
| W6 | WIZZAIR | 153,545 | 7.48% | 29,867 | 4.06% | |
| TK | TURKISH AIRLINES | 138,719 | 6.76% | 25,957 | 3.53% | |
| FR | RYANAIR | 112,703 | 5.49% | 69,939 | 9.51% | 61.14% |
| 6H | ISRAIR AIRLINES | 98,541 | 4.80% | 40,734 | 5.54% | 141.91% |
| IZ | ARKIA ISRAELI AIRLINES | 95,122 | 4.63% | 36,808 | 5.00% | 158.42% |
| PC | PEGASUS AIRLINES | 83,008 | 4.04% | 4,789 | 0.65% | |
| EZY | EASYJET | 73,779 | 3.59% | 37,619 | 5.11% | 96.12% |
| UA | UNITED AIRLINES | 62,125 | 3.02% | 35,812 | 4.87% | 73.47% |
| LH | LUFTHANSA | 51,320 | 2.50% | 20,017 | 2.72% | 156.38% |
| A3 | AEGEAN AIRLINES | 49,733 | 2.42% | 17,918 | 2.43% | 177.55% |
| BZ | BLUE BIRD AIRWAYS | 45,090 | 2.19% | 20,708 | 2.81% | 117.74% |
| XC | CORONDON AIRLINES | 35,656 | 1.73% | | | |
| FZ | FLYDUBAI | 33,130 | 1.61% | 12,561 | 1.70% | 163.75% |
| U8 | TUS AIRWAYS | 30,318 | 1.47% | 5,545 | 0.75% | |
| TO | TRANSAVIA FRANCE | 29,871 | 1.45% | 4,969 | 0.67% | |
| OS | AUSTRIAN AIRLINES | 27,301 | 1.33% | 11,355 | 1.54% | 140.43% |
| BA | BRITISH AIRWAYS PLC | 26,002 | 1.26% | 9,890 | 1.34% | 162.91% |
| LO | LOT POLISH AIRLINES | 22,710 | 1.10% | 6,419 | 0.87% | |
| LX | SWISS INT'L AIRLINES | 22,681 | 1.10% | 11,661 | 1.58% | 94.50% |
| AF | AIR FRANCE | 22,603 | 1.10% | 11,086 | 1.50% | 103.88% |





International Passenger Traffic

Distribution by Airline for September

| | | September 2022 | | September 2021 | | |
|---------|---------------------------|----------------|---------------|----------------|---------------|----------------|
| Airline | | Passengers | Rate of Total | Passengers | Rate of Total | Rate of Change |
| DL | DELTA AIRLINES | 22,333 | 1.08% | 22,910 | 3.11% | -2.51% |
| AC | AIR CANADA | 21,494 | 1.04% | 10,339 | 1.40% | 107.89% |
| AA | AMERICAN AIRLINES | 20,766 | 1.01% | 13,341 | 1.81% | 55.65% |
| EK | EMIRATES | 18,539 | 0.90% | | | |
| AZ | ITALIA TRASPORTO AEREO | 17,900 | 0.87% | 4,908 | 0.66% | |
| IB | IBERIA | 16,083 | 0.78% | 4,437 | 0.60% | |
| SN | BRUSSELS AIRLINES | 13,899 | 0.67% | 2,704 | 0.36% | |
| UX | AIR EUROPA Lineas Aereas | 13,864 | 0.67% | 2,385 | 0.32% | |
| ET | ETHIOPIAN AIRLINES | 13,762 | 0.67% | 5,417 | 0.73% | 154.05% |
| TWI | TAILWIND AIRLINES | 13,566 | 0.66% | | | |
| QS | SMARTWINGS | 13,509 | 0.65% | 14,121 | 1.92% | -4.33% |
| EY | ETIHAD AIRWAYS | 13,127 | 0.64% | 942 | 0.12% | |
| VS | VIRGIN ATLANTIC AIRWAYS | 12,731 | 0.62% | 7,461 | 1.01% | 70.63% |
| KL | K.L.M. | 10,300 | 0.50% | 6,667 | 0.90% | 54.49% |
| H4 | HISKY EUROPE SRL | 9,531 | 0.46% | | | |
| HV | TRANSAVIA | 9,237 | 0.45% | 2,173 | 0.29% | |
| VY | VUELING AIRLINES S.A. | 8,800 | 0.42% | | | |
| A9 | GEORGIAN AIRWAYS | 8,579 | 0.41% | 5,027 | 0.68% | 70.65% |
| FB | BULGARIA AIR | 7,995 | 0.38% | | | |
| J2 | AZERBAIJAN AIRLINES | 6,893 | 0.33% | 1,555 | 0.21% | |
| RO | TAROM - RUMANIAN AIR TRAN | 6,810 | 0.33% | 2,899 | 0.39% | 134.90% |





International Passenger Traffic

Distribution by Airline for September

| | | September 2022 | | September 2021 | | |
|---------|-----------------------|----------------|---------------|----------------|---------------|----------------|
| Airline | | Passengers | Rate of Total | Passengers | Rate of Total | Rate of Change |
| D8 | NORWEGIAN AIR SHUTTLE | 6,475 | 0.31% | | | |
| TP | AIR PORTUGAL | 6,439 | 0.31% | 1,262 | 0.17% | |
| BUC | EUROPEAN AIR CHARTER | 6,427 | 0.31% | | | |
| XQ | SUN EXPRESS | 6,309 | 0.30% | | | |
| AI | AIR INDIA | 5,357 | 0.26% | 715 | 0.09% | |
| 9U | AIR MOLDOVA | 5,117 | 0.24% | 3,497 | 0.47% | 46.32% |
| 5W | WIZZ AIR ABU DHABI | 5,097 | 0.24% | | | |
| HY | UZBEKISTAN AIR | 4,964 | 0.24% | 1,308 | 0.17% | |
| CY | CYPRUS AIRWAYS | 4,763 | 0.23% | 127 | 0.01% | |
| AT | ROYAL AIR MAROC | 4,684 | 0.22% | | | |
| H7 | HISKY | 4,214 | 0.20% | | | |
| XR | CORENDON EUROPE | 4,144 | 0.20% | | | |
| NO | NEOS | 4,075 | 0.19% | 767 | 0.10% | |
| MS | EGYPTAIR AIRLINES | 3,882 | 0.18% | | | |
| RJ | ROYAL JORDANIAN | 3,776 | 0.18% | 386 | 0.05% | |
| BT | AIR BALTIC | 3,625 | 0.17% | 1,286 | 0.17% | 181.88% |
| FH | FREEBIRD AIRLINES | 3,277 | 0.15% | | | |
| GF | GULF AIR - BAHREIN | 3,104 | 0.15% | 111 | 0.01% | |
| A4 | AZIMUTH AIRLINES | 3,082 | 0.15% | | | |
| AY | FINNAIR | 2,988 | 0.14% | 1,068 | 0.14% | 179.77% |
| ENT | ENTER AIR | 2,987 | 0.14% | | | |





International Passenger Traffic

Distribution by Airline for September

| | | September 2022 | | September 2021 | | |
|--------------|-------------------------|------------------|---------------|----------------|---------------|----------------|
| Airline | | Passengers | Rate of Total | Passengers | Rate of Total | Rate of Change |
| WZ | RED WINGS AIRLINES | 2,952 | 0.14% | | | |
| OU | CROATIA AIR | 2,920 | 0.14% | | | |
| 5F | FLYONE | 2,918 | 0.14% | 1,626 | 0.22% | 79.45% |
| SM | AIR CAIRO | 2,841 | 0.13% | | | |
| HM | AIR SEYCHELLES | 2,778 | 0.13% | 2,963 | 0.40% | -6.24% |
| PQ | SKYUP AIRLINES | 2,583 | 0.12% | 1,666 | 0.22% | 55.04% |
| 2S | SOUTWIND AIRLINES | 1,428 | 0.06% | | | |
| CX | CATHAY PACIFIC AIRWAYS | 1,269 | 0.06% | 416 | 0.05% | |
| OB | BLUE AIR AVIATION | 1,073 | 0.05% | 589 | 0.08% | 82.17% |
| CAJ | AIR CARAIBES ATLANTIQUE | 354 | 0.01% | | | |
| AHS | AERO HANDLING | 262 | 0.01% | 139 | 0.01% | 88.48% |
| | OTHERS | 8,179 | 0.39% | 51,846 | 7.05% | -84.22% |
| TOTAL | | 2,050,829 | | 735,212 | | 178.94% |





Int'l Accumulated Passenger Traffic

Distribution by Airline

| | | Accumulated 2022 | | Accumulated 2021 | | |
|---------|------------------------|------------------|---------------|------------------|---------------|----------------|
| Airline | | Passengers | Rate of Total | Passengers | Rate of Total | Rate of Change |
| LY | EL AL ISRAEL AIRLINES | 3,012,570 | 21.95% | 903,581 | 24.36% | |
| FR | RYANAIR | 929,999 | 6.77% | 233,048 | 6.28% | |
| TK | TURKISH AIRLINES | 925,130 | 6.74% | 186,944 | 5.03% | |
| W6 | WIZZAIR | 890,302 | 6.48% | 177,049 | 4.77% | |
| 6H | ISRAIR AIRLINES | 627,510 | 4.57% | 219,382 | 5.91% | 186.03% |
| EZY | EASYJET | 578,714 | 4.21% | 104,214 | 2.80% | |
| PC | PEGASUS AIRLINES | 573,348 | 4.17% | 121,429 | 3.27% | |
| IZ | ARKIA ISRAELI AIRLINES | 536,821 | 3.91% | 145,552 | 3.92% | |
| UA | UNITED AIRLINES | 477,187 | 3.47% | 238,480 | 6.42% | 100.09% |
| LH | LUFTHANSA | 409,808 | 2.98% | 121,298 | 3.27% | |
| A3 | AEGEAN AIRLINES | 266,274 | 1.94% | 80,337 | 2.16% | |
| FZ | FLYDUBAI | 259,174 | 1.88% | 59,467 | 1.60% | |
| BZ | BLUE BIRD AIRWAYS | 233,409 | 1.70% | 70,831 | 1.90% | |
| TO | TRANSAVIA FRANCE | 203,455 | 1.48% | 26,680 | 0.71% | |
| XC | CORONDON AIRLINES | 197,564 | 1.43% | 11,581 | 0.31% | |
| U8 | TUS AIRWAYS | 194,786 | 1.41% | 9,815 | 0.26% | |
| AF | AIR FRANCE | 185,441 | 1.35% | 52,111 | 1.40% | |
| AA | AMERICAN AIRLINES | 172,389 | 1.25% | 60,641 | 1.63% | 184.27% |
| LX | SWISS INT'L AIRLINES | 172,187 | 1.25% | 50,943 | 1.37% | |
| DL | DELTA AIRLINES | 163,078 | 1.18% | 105,654 | 2.84% | 54.35% |
| LO | LOT POLISH AIRLINES | 162,883 | 1.18% | 22,556 | 0.60% | |





Int'l Accumulated Passenger Traffic

Distribution by Airline

| | | Accumulated 2022 | | Accumulated 2021 | | |
|---------|---------------------------|------------------|---------------|------------------|---------------|----------------|
| Airline | | Passengers | Rate of Total | Passengers | Rate of Total | Rate of Change |
| OS | AUSTRIAN AIRLINES | 162,268 | 1.18% | 51,721 | 1.39% | |
| BA | BRITISH AIRWAYS PLC | 143,023 | 1.04% | 36,581 | 0.98% | |
| AC | AIR CANADA | 122,232 | 0.89% | 34,309 | 0.92% | |
| IB | IBERIA | 120,594 | 0.87% | 17,620 | 0.47% | |
| AZ | ITALIA TRASPORTO AEREO | 111,959 | 0.81% | 9,593 | 0.25% | |
| VS | VIRGIN ATLANTIC AIRWAYS | 91,785 | 0.66% | 28,770 | 0.77% | |
| QS | SMARTWINGS | 91,509 | 0.66% | 32,771 | 0.88% | 179.23% |
| ET | ETHIOPIAN AIRLINES | 90,032 | 0.65% | 32,806 | 0.88% | 174.43% |
| SN | BRUSSELS AIRLINES | 88,239 | 0.64% | 13,642 | 0.36% | |
| KL | K.L.M. | 86,285 | 0.62% | 37,300 | 1.00% | 131.32% |
| UX | AIR EUROPA Lineas Aereas | 85,007 | 0.61% | 10,913 | 0.29% | |
| TWI | TAILWIND AIRLINES | 79,747 | 0.58% | 12,670 | 0.34% | |
| EY | ETIHAD AIRWAYS | 60,615 | 0.44% | 4,888 | 0.13% | |
| A9 | GEORGIAN AIRWAYS | 59,465 | 0.43% | 21,916 | 0.59% | 171.33% |
| 5W | WIZZ AIR ABU DHABI | 57,671 | 0.42% | 1,041 | 0.02% | |
| EK | EMIRATES | 57,667 | 0.42% | | | |
| HV | TRANSAVIA | 54,335 | 0.39% | 8,060 | 0.21% | |
| RO | TAROM - RUMANIAN AIR TRAN | 52,732 | 0.38% | 16,881 | 0.45% | |
| VY | VUELING AIRLINES S.A. | 50,887 | 0.37% | 876 | 0.02% | |
| TP | AIR PORTUGAL | 43,307 | 0.31% | 1,262 | 0.03% | |
| FB | BULGARIA AIR | 42,217 | 0.30% | 12,355 | 0.33% | |





Int'l Accumulated Passenger Traffic

Distribution by Airline

| | | Accumulated 2022 | | Accumulated 2021 | | |
|---------|---------------------------|------------------|---------------|------------------|---------------|----------------|
| Airline | | Passengers | Rate of Total | Passengers | Rate of Total | Rate of Change |
| NO | NEOS | 41,818 | 0.30% | 2,277 | 0.06% | |
| D8 | NORWEGIAN AIR SHUTTLE | 36,813 | 0.26% | | | |
| RJ | ROYAL JORDANIAN | 34,582 | 0.25% | 927 | 0.02% | |
| AI | AIR INDIA | 34,415 | 0.25% | 5,079 | 0.13% | |
| FH | FREEBIRD AIRLINES | 33,995 | 0.24% | 12,598 | 0.33% | 169.84% |
| J2 | AZERBAIJAN AIRLINES | 31,986 | 0.23% | 4,995 | 0.13% | |
| MS | EGYPTAIR AIRLINES | 29,959 | 0.21% | | | |
| HY | UZBEKISTAN AIR | 28,385 | 0.20% | 3,926 | 0.10% | |
| 9U | AIR MOLDOVA | 27,755 | 0.20% | 20,863 | 0.56% | 33.03% |
| AT | ROYAL AIR MAROC | 27,753 | 0.20% | | | |
| PS | UKRAINE INTL AIR | 27,663 | 0.20% | 123,108 | 3.31% | -77.52% |
| BUC | EUROPEAN AIR CHARTER | 27,279 | 0.19% | 11,999 | 0.32% | 127.34% |
| CY | CYPRUS AIRWAYS | 26,360 | 0.19% | 2,790 | 0.07% | |
| XQ | SUN EXPRESS | 25,034 | 0.18% | | | |
| H4 | HISKY EUROPE SRL | 23,250 | 0.16% | | | |
| OB | BLUE AIR AVIATION | 23,045 | 0.16% | 3,606 | 0.09% | |
| AY | FINNAIR | 22,815 | 0.16% | 3,316 | 0.08% | |
| HM | AIR SEYCHELLES | 20,934 | 0.15% | 8,287 | 0.22% | 152.61% |
| BT | AIR BALTIC | 20,828 | 0.15% | 4,914 | 0.13% | |
| SU | AEROFLOT RUSSIAN AIRLINES | 20,411 | 0.14% | 33,721 | 0.90% | -39.47% |
| GF | GULF AIR - BAHREIN | 18,325 | 0.13% | 115 | | |





Int'l Accumulated Passenger Traffic

Distribution by Airline

| | | Accumulated 2022 | | Accumulated 2021 | | |
|--------------|------------------------|-------------------|---------------|------------------|---------------|----------------|
| Airline | | Passengers | Rate of Total | Passengers | Rate of Total | Rate of Change |
| XR | CORENDON EUROPE | 18,020 | 0.13% | | | |
| 5F | FLYONE | 16,977 | 0.12% | 6,825 | 0.18% | 148.74% |
| SM | AIR CAIRO | 16,325 | 0.11% | | | |
| A4 | AZIMUTH AIRLINES | 16,203 | 0.11% | | | |
| H7 | HISKY | 13,269 | 0.09% | | | |
| PQ | SKYUP AIRLINES | 11,200 | 0.08% | 2,561 | 0.06% | |
| WZ | RED WINGS AIRLINES | 10,912 | 0.07% | | | |
| ENT | ENTER AIR | 10,808 | 0.07% | 967 | 0.02% | |
| OU | CROATIA AIR | 9,998 | 0.07% | | | |
| FV | ROSSIYA AIRLINES | 7,970 | 0.05% | 77 | | |
| CX | CATHAY PACIFIC AIRWAYS | 6,962 | 0.05% | 1,567 | 0.04% | |
| HST | HESTON AIRLINES | 6,554 | 0.04% | | | |
| JAV | JORDANIAN AVIATION | 3,745 | 0.02% | 496 | 0.01% | |
| IO | IRAERO AIRLINES | 3,341 | 0.02% | | | |
| B2 | BELAVIA AIRLINE | 3,291 | 0.02% | 20,433 | 0.55% | -83.89% |
| | OTHERS | 60,803 | 0.44% | 46,197 | 1.24% | 31.61% |
| TOTAL | | 13,723,388 | | 3,709,212 | | |





International Passenger Traffic

Distribution by Israeli Airlines for September

| | | September 2022 | | September 2021 | | |
|----------|------------------------|----------------|---------------|----------------|---------------|----------------|
| Airlines | | Passengers | Rate of Total | Passengers | Rate of Total | Rate of Change |
| LY | EL AL ISRAEL AIRLINES | 432,811 | 21.10% | 144,500 | 19.65% | 199.52% |
| 6H | ISRAIR AIRLINES | 98,541 | 4.80% | 40,734 | 5.54% | 141.91% |
| IZ | ARKIA ISRAELI AIRLINES | 95,122 | 4.63% | 36,808 | 5.00% | 158.42% |
| | OTHERS | 740 | 0.03% | 478 | 0.06% | 54.81% |
| | TOTAL | 627,214 | 30.58% | 222,520 | 30.26% | 181.86% |

Int'l Accumulated Passenger Traffic

Distribution by Israeli Airlines

| | | Accumulated 2022 | | Accumulated 2021 | | |
|----------|------------------------|------------------|---------------|------------------|---------------|----------------|
| Airlines | | Passengers | Rate of Total | Passengers | Rate of Total | Rate of Change |
| LY | EL AL ISRAEL AIRLINES | 3,012,570 | 21.95% | 903,581 | 24.36% | |
| 6H | ISRAIR AIRLINES | 627,510 | 4.57% | 219,382 | 5.91% | 186.03% |
| IZ | ARKIA ISRAELI AIRLINES | 536,821 | 3.91% | 145,552 | 3.92% | |
| | OTHERS | 5,755 | 0.04% | 4,687 | 0.12% | 22.78% |
| | TOTAL | 4,182,656 | 30.47% | 1,273,202 | 34.32% | |





International Passenger Traffic

Distribution by Countries for September

| Countries | September 2022 | | September 2021 | | |
|----------------------|----------------|---------------|----------------|---------------|----------------|
| | Passengers | Rate of Total | Passengers | Total of Rate | Rate of Change |
| TURKEY | 282,180 | 13.75% | 30,756 | 4.18% | |
| GREECE | 233,655 | 11.39% | 80,904 | 11.00% | 188.80% |
| UNITED STATES | 173,137 | 8.44% | 104,456 | 14.20% | 65.75% |
| ITALY | 138,541 | 6.75% | 33,464 | 4.55% | |
| FRANCE | 112,308 | 5.47% | 40,597 | 5.52% | 176.64% |
| UNITED KINGDOM | 110,234 | 5.37% | 33,876 | 4.60% | |
| GERMANY | 102,409 | 4.99% | 34,098 | 4.63% | |
| CYPRUS | 82,914 | 4.04% | 20,254 | 2.75% | |
| UNITED ARAB EMIRATES | 82,472 | 4.02% | 17,044 | 2.31% | |
| SPAIN | 71,433 | 3.48% | 12,900 | 1.75% | |
| AUSTRIA | 56,666 | 2.76% | 36,436 | 4.95% | 55.52% |
| ROMANIA | 55,347 | 2.69% | 20,783 | 2.82% | 166.30% |
| GEORGIA | 53,431 | 2.60% | 20,445 | 2.78% | 161.34% |
| POLAND | 49,615 | 2.41% | 16,016 | 2.17% | |
| HUNGARY | 48,056 | 2.34% | 32,144 | 4.37% | 49.50% |
| NETHERLANDS | 45,332 | 2.21% | 12,299 | 1.67% | |
| SWITZERLAND | 44,316 | 2.16% | 19,000 | 2.58% | 133.24% |
| BULGARIA | 40,267 | 1.96% | 1,365 | 0.18% | |
| CANADA | 25,783 | 1.25% | 11,577 | 1.57% | 122.70% |
| CZECH REPUBLIC | 24,528 | 1.19% | 30,884 | 4.20% | -20.58% |
| BELGIUM | 23,461 | 1.14% | 4,307 | 0.58% | |
| EGYPT | 21,883 | 1.06% | 208 | 0.02% | |





International Passenger Traffic

Distribution by Countries for September

| Countries | September 2022 | | September 2021 | | |
|--------------------|----------------|---------------|----------------|---------------|----------------|
| | Passengers | Rate of Total | Passengers | Total of Rate | Rate of Change |
| MOLDOVA | 19,601 | 0.95% | 5,517 | 0.75% | |
| RUSSIAN FEDERATION | 14,845 | 0.72% | 15,983 | 2.17% | -7.12% |
| THAILAND | 14,788 | 0.72% | 2,612 | 0.35% | |
| PORTUGAL | 14,678 | 0.71% | 2,090 | 0.28% | |
| MONTENEGRO | 13,996 | 0.68% | 4,728 | 0.64% | 196.02% |
| ETHIOPIA | 13,762 | 0.67% | 5,417 | 0.73% | 154.05% |
| MOROCCO | 13,703 | 0.66% | 1,214 | 0.16% | |
| AZERBAIJAN | 10,929 | 0.53% | 2,178 | 0.29% | |
| LITHUANIA | 5,925 | 0.28% | 2,079 | 0.28% | 184.99% |
| INDIA | 5,357 | 0.26% | 715 | 0.09% | |
| UZBEKISTAN | 4,964 | 0.24% | 1,308 | 0.17% | |
| CROATIA | 4,484 | 0.21% | 3 | | |
| JORDAN | 3,912 | 0.19% | 401 | 0.05% | |
| LATVIA | 3,630 | 0.17% | 1,286 | 0.17% | 182.27% |
| SLOVENIA | 3,445 | 0.16% | | | |
| DENMARK | 3,273 | 0.15% | 2,185 | 0.29% | 49.79% |
| SWEDEN | 3,223 | 0.15% | | | |
| BAHRAIN | 3,138 | 0.15% | 236 | 0.03% | |
| FINLAND | 2,988 | 0.14% | 1,068 | 0.14% | 179.77% |
| SOUTH AFRICA | 2,896 | 0.14% | | | |
| SEYCHELLES | 2,472 | 0.12% | 3,561 | 0.48% | -30.58% |
| SERBIA | 1,939 | 0.09% | 475 | 0.06% | |





International Passenger Traffic

Distribution by Countries for September

| Countries | September 2022 | | September 2021 | | |
|--------------|------------------|---------------|----------------|---------------|----------------|
| | Passengers | Rate of Total | Passengers | Total of Rate | Rate of Change |
| MALTA | 1,495 | 0.07% | 6 | | |
| CHINA | 1,269 | 0.06% | 787 | 0.10% | 61.24% |
| TANZANIA | 1,141 | 0.05% | 732 | 0.09% | 55.87% |
| OTHERS | 1,008 | 0.04% | 66,818 | 9.08% | -98.49% |
| TOTAL | 2,050,829 | | 735,212 | | 178.94% |





Int'l Accumulated Passenger Traffic

Distribution by Countries

| Countries | Accumulated 2022 | | Accumulated 2021 | | |
|----------------------|------------------|---------------|------------------|---------------|----------------|
| | Passengers | Rate of Total | Passengers | Rate of Total | Rate of Change |
| TURKEY | 1,838,488 | 13.39% | 346,400 | 9.33% | |
| UNITED STATES | 1,375,399 | 10.02% | 672,086 | 18.11% | 104.64% |
| GREECE | 1,172,582 | 8.54% | 414,664 | 11.17% | 182.77% |
| ITALY | 899,688 | 6.55% | 101,292 | 2.73% | |
| FRANCE | 894,675 | 6.51% | 222,388 | 5.99% | |
| UNITED KINGDOM | 775,662 | 5.65% | 148,370 | 4.00% | |
| GERMANY | 766,568 | 5.58% | 202,221 | 5.45% | |
| UNITED ARAB EMIRATES | 612,151 | 4.46% | 121,004 | 3.26% | |
| CYPRUS | 491,834 | 3.58% | 123,437 | 3.32% | |
| SPAIN | 460,181 | 3.35% | 44,007 | 1.18% | |
| AUSTRIA | 390,981 | 2.84% | 123,724 | 3.33% | |
| GEORGIA | 358,119 | 2.60% | 144,774 | 3.90% | 147.36% |
| HUNGARY | 353,784 | 2.57% | 70,637 | 1.90% | |
| SWITZERLAND | 341,710 | 2.48% | 87,167 | 2.35% | |
| ROMANIA | 336,884 | 2.45% | 85,644 | 2.30% | |
| POLAND | 323,080 | 2.35% | 46,004 | 1.24% | |
| NETHERLANDS | 318,578 | 2.32% | 70,037 | 1.88% | |
| BULGARIA | 272,732 | 1.98% | 80,494 | 2.17% | |
| CZECH REPUBLIC | 190,117 | 1.38% | 59,257 | 1.59% | |
| BELGIUM | 161,165 | 1.17% | 25,569 | 0.68% | |
| CANADA | 157,332 | 1.14% | 37,191 | 1.00% | |
| RUSSIAN FEDERATION | 130,253 | 0.94% | 63,777 | 1.71% | 104.23% |





Int'l Accumulated Passenger Traffic

Distribution by Countries

| Countries | Accumulated 2022 | | Accumulated 2021 | | |
|--------------|------------------|---------------|------------------|---------------|----------------|
| | Passengers | Rate of Total | Passengers | Rate of Total | Rate of Change |
| EGYPT | 120,121 | 0.87% | 1,208 | 0.03% | |
| THAILAND | 97,415 | 0.70% | 14,588 | 0.39% | |
| PORTUGAL | 95,695 | 0.69% | 7,178 | 0.19% | |
| ETHIOPIA | 90,096 | 0.65% | 33,069 | 0.89% | 172.44% |
| MOROCCO | 87,913 | 0.64% | 2,685 | 0.07% | |
| MOLDOVA | 68,916 | 0.50% | 29,037 | 0.78% | 137.33% |
| MONTENEGRO | 64,115 | 0.46% | 20,308 | 0.54% | |
| AZERBAIJAN | 50,305 | 0.36% | 6,110 | 0.16% | |
| LITHUANIA | 41,695 | 0.30% | 6,149 | 0.16% | |
| JORDAN | 39,803 | 0.29% | 2,696 | 0.07% | |
| UKRAINE | 39,742 | 0.28% | 199,487 | 5.37% | -80.07% |
| INDIA | 34,441 | 0.25% | 6,227 | 0.16% | |
| FINLAND | 32,416 | 0.23% | 3,327 | 0.08% | |
| UZBEKISTAN | 28,390 | 0.20% | 4,364 | 0.11% | |
| LATVIA | 20,861 | 0.15% | 4,923 | 0.13% | |
| DENMARK | 19,059 | 0.13% | 3,138 | 0.08% | |
| SEYCHELLES | 18,996 | 0.13% | 17,198 | 0.46% | 10.45% |
| SOUTH AFRICA | 18,930 | 0.13% | 109 | | |
| BAHRAIN | 18,662 | 0.13% | 356 | | |
| CROATIA | 17,959 | 0.13% | 598 | 0.01% | |
| SWEDEN | 17,939 | 0.13% | 475 | 0.01% | |
| SERBIA | 16,781 | 0.12% | 8,998 | 0.24% | 86.49% |





Int'l Accumulated Passenger Traffic

Distribution by Countries

| Countries | Accumulated 2022 | | Accumulated 2021 | | |
|--------------|-------------------|---------------|------------------|---------------|----------------|
| | Passengers | Rate of Total | Passengers | Rate of Total | Rate of Change |
| SLOVENIA | 14,644 | 0.10% | 2,334 | 0.06% | |
| MALTA | 11,500 | 0.08% | 111 | | |
| TANZANIA | 9,613 | 0.07% | 4,158 | 0.11% | 131.19% |
| CHINA | 7,465 | 0.05% | 7,236 | 0.19% | 3.16% |
| ICELAND | 6,633 | 0.04% | 3,304 | 0.08% | 100.75% |
| BELARUS | 3,298 | 0.02% | 20,665 | 0.55% | -84.04% |
| MACEDONIA | 2,643 | 0.01% | 25 | | |
| OTHERS | 5,379 | 0.03% | 9,007 | 0.24% | -40.27% |
| TOTAL | 13,723,388 | | 3,709,212 | | |





International Passenger Traffic

Distribution by First Destination for September

| Destination | September 2022 | | September 2021 | | |
|-------------------------|----------------|---------------|----------------|---------------|----------------|
| | Passengers | Rate of Total | Passengers | Rate of Total | Rate of Change |
| ANTALYA | 96,675 | 4.71% | | | |
| ISTANBUL | 93,271 | 4.54% | 23,851 | 3.24% | |
| ISTANBUL-SABIHA GOKCHEN | 74,180 | 3.61% | 6,900 | 0.93% | |
| PARIS-CHARLES DE GAULLE | 67,912 | 3.31% | 30,069 | 4.08% | 125.85% |
| ATHENS | 66,955 | 3.26% | 31,280 | 4.25% | 114.05% |
| DUBAI | 63,735 | 3.10% | 15,979 | 2.17% | |
| ROME - FIUMICINO | 59,628 | 2.90% | 14,380 | 1.95% | |
| LARNACA | 59,563 | 2.90% | 12,824 | 1.74% | |
| NEW YORK - J.F.KENNEDY | 58,351 | 2.84% | 46,897 | 6.37% | 24.42% |
| LONDON - HEATHROW | 57,925 | 2.82% | 24,787 | 3.37% | 133.69% |
| VIENNA | 56,666 | 2.76% | 35,493 | 4.82% | 59.65% |
| NEW YORK - NEWARK | 54,948 | 2.67% | 31,277 | 4.25% | 75.68% |
| HERAKLION | 52,296 | 2.54% | 14,122 | 1.92% | |
| RHODES-PARADISI | 52,286 | 2.54% | 16,752 | 2.27% | |
| AMSTERDAM | 45,323 | 2.20% | 12,208 | 1.66% | |
| BUDAPEST | 45,252 | 2.20% | 32,144 | 4.37% | 40.77% |
| MADRID | 41,485 | 2.02% | 6,826 | 0.92% | |
| BUCHAREST - OTOPENI | 40,872 | 1.99% | 17,301 | 2.35% | 136.24% |
| FRANKFURT | 36,658 | 1.78% | 13,927 | 1.89% | 163.21% |
| LUTON | 35,229 | 1.71% | 6,400 | 0.87% | |
| ZURICH | 31,726 | 1.54% | 13,748 | 1.86% | 130.76% |
| MILAN-MALPENSA | 31,596 | 1.54% | 10,111 | 1.37% | |





International Passenger Traffic

Distribution by First Destination for September

| Destination | September 2022 | | September 2021 | | |
|-------------------------|----------------|---------------|----------------|---------------|----------------|
| | Passengers | Rate of Total | Passengers | Rate of Total | Rate of Change |
| BARCELONA | 29,117 | 1.41% | 6,037 | 0.82% | |
| MUNICH | 28,693 | 1.39% | 6,311 | 0.85% | |
| BERLIN BRANDENBURG INTL | 28,510 | 1.39% | 9,862 | 1.34% | 189.08% |
| BATUMI | 27,706 | 1.35% | 11,963 | 1.62% | 131.59% |
| WARSAW | 27,618 | 1.34% | 12,168 | 1.65% | 126.97% |
| PARIS-ORLY | 27,092 | 1.32% | 4,969 | 0.67% | |
| TBILISI | 25,725 | 1.25% | 8,482 | 1.15% | |
| PRAGUE-RUZYNE | 24,503 | 1.19% | 30,862 | 4.19% | -20.60% |
| PAPHOS | 23,351 | 1.13% | 7,430 | 1.01% | |
| THESSALONIKI | 22,242 | 1.08% | 5,652 | 0.76% | |
| TORONTO | 19,625 | 0.95% | 9,006 | 1.22% | 117.91% |
| CHISINAU | 19,601 | 0.95% | 5,517 | 0.75% | |
| ABU DHABI | 18,671 | 0.91% | 942 | 0.12% | |
| SHARM EL SHEIKH | 17,907 | 0.87% | 103 | 0.01% | |
| BRUSSELS | 17,426 | 0.84% | 4,292 | 0.58% | |
| SOFIA | 17,231 | 0.84% | 1,365 | 0.18% | |
| LISBON | 14,673 | 0.71% | 2,080 | 0.28% | |
| SAN FRANCISCO | 14,641 | 0.71% | 8,540 | 1.16% | 71.44% |
| MIAMI INTERNATIONAL | 14,349 | 0.69% | 8,251 | 1.12% | 73.90% |
| KRAKOW | 14,020 | 0.68% | 3,846 | 0.52% | |
| DALAMAN | 13,966 | 0.68% | 3 | | |
| ADDIS ABABA | 13,762 | 0.67% | 5,417 | 0.73% | 154.05% |





International Passenger Traffic

Distribution by First Destination for September

| Destination | September 2022 | | September 2021 | | |
|--------------------------|----------------|---------------|----------------|---------------|----------------|
| | Passengers | Rate of Total | Passengers | Rate of Total | Rate of Change |
| BURGAS | 13,414 | 0.65% | | | |
| BANGKOK INTL.-SUARNABHUM | 12,293 | 0.59% | 123 | 0.01% | |
| MIKONOS | 11,209 | 0.54% | 1,160 | 0.15% | |
| LONDON - GATWICK | 11,097 | 0.54% | | | |
| BAKU HEYDAR ALIYEV INT'L | 10,922 | 0.53% | 2,178 | 0.29% | |
| LOS ANGELES | 10,041 | 0.48% | 5,778 | 0.78% | 73.77% |
| TIVAT | 9,886 | 0.48% | 4,728 | 0.64% | 109.09% |
| VENICE | 9,834 | 0.47% | | | |
| VARNA | 9,622 | 0.46% | | | |
| BOSTON-LOGAN INT | 9,426 | 0.45% | | | |
| GENEVA | 9,419 | 0.45% | 3,082 | 0.41% | |
| MOSCOW-DOMODEDOVO | 9,130 | 0.44% | 8,116 | 1.10% | 12.49% |
| BERGAMO | 9,022 | 0.43% | 4,571 | 0.62% | 97.37% |
| MARRAKESH | 8,701 | 0.42% | 1,214 | 0.16% | |
| CORFU | 8,099 | 0.39% | 3,510 | 0.47% | 130.74% |
| NAPLES-CAPODICHINO | 7,889 | 0.38% | 1,328 | 0.18% | |
| NICE | 7,829 | 0.38% | 2,155 | 0.29% | |
| SANTORINI | 6,287 | 0.30% | 2,238 | 0.30% | 180.92% |
| MONTREAL - DORVAL | 6,144 | 0.29% | 2,571 | 0.34% | 138.97% |
| BRUSSELS - CHARLEROI | 6,018 | 0.29% | | | |
| VILNIUS INTL | 5,925 | 0.28% | 2,079 | 0.28% | 184.99% |
| MANCHESTER | 5,863 | 0.28% | 2,665 | 0.36% | 120.00% |





International Passenger Traffic

Distribution by First Destination for September

| Destination | September 2022 | | September 2021 | | |
|--------------------------|----------------|---------------|----------------|---------------|----------------|
| | Passengers | Rate of Total | Passengers | Rate of Total | Rate of Change |
| MARSEILLE | 5,703 | 0.27% | 1,666 | 0.22% | |
| WASHINGTON-DULLES | 5,651 | 0.27% | | | |
| CHICAGO - O'HARE | 5,615 | 0.27% | 3,543 | 0.48% | 58.48% |
| CATANIA FONTANAROSSA | 5,577 | 0.27% | 97 | 0.01% | |
| DELHI | 5,357 | 0.26% | 715 | 0.09% | |
| KOS | 5,250 | 0.25% | 20 | | |
| SUCEAVA-ROMANIA | 5,223 | 0.25% | | | |
| RZESZOW-JASIONKA | 5,171 | 0.25% | | | |
| CLUJ NAPOCA | 5,118 | 0.24% | 1,995 | 0.27% | 156.54% |
| TASHKENT | 4,964 | 0.24% | 1,308 | 0.17% | |
| CASABLANCA-MOHAMMED V | 4,694 | 0.22% | | | |
| VILLAFRANCA-VERONA | 4,399 | 0.21% | 728 | 0.09% | |
| KHANIA-SOUDABAY | 4,296 | 0.20% | 5,346 | 0.72% | -19.64% |
| ZAGREB | 4,220 | 0.20% | | | |
| PODGORICA | 4,110 | 0.20% | | | |
| CAIRO INTERNATIONAL | 3,951 | 0.19% | 30 | | |
| AMMAN (QUEEN ALIA INT'L) | 3,788 | 0.18% | 388 | 0.05% | |
| RIGA | 3,630 | 0.17% | 1,286 | 0.17% | 182.27% |
| IASI | 3,598 | 0.17% | 1,487 | 0.20% | 141.96% |
| LJUBLJANA | 3,445 | 0.16% | | | |
| MEMMINGEN | 3,284 | 0.16% | 1,872 | 0.25% | 75.42% |
| COPENHAGEN KASTRUP | 3,273 | 0.15% | 2,185 | 0.29% | 49.79% |





International Passenger Traffic

Distribution by First Destination for September

| Destination | September 2022 | | September 2021 | | |
|------------------------|----------------|---------------|----------------|---------------|----------------|
| | Passengers | Rate of Total | Passengers | Rate of Total | Rate of Change |
| BOLOGNA-BORGO PANIGALE | 3,268 | 0.15% | 3 | | |
| STOCKHOLM-ARLANDA | 3,213 | 0.15% | | | |
| BASEL | 3,151 | 0.15% | 2,118 | 0.28% | 48.77% |
| BAHRAIN | 3,138 | 0.15% | 236 | 0.03% | |
| HELSINKI | 2,988 | 0.14% | 1,068 | 0.14% | 179.77% |
| JOHANNESBURG | 2,896 | 0.14% | | | |
| BARI -PALESE MACCHIE | 2,888 | 0.14% | | | |
| DEBRECEN | 2,804 | 0.13% | | | |
| KATOWICE | 2,798 | 0.13% | | | |
| MINERALNYE VODY | 2,788 | 0.13% | | | |
| TURIN | 2,780 | 0.13% | | | |
| LYON - SATOLAS | 2,779 | 0.13% | 1,705 | 0.23% | 62.99% |
| BADEN BADEN | 2,676 | 0.13% | 2,110 | 0.28% | 26.82% |
| PHUKET | 2,495 | 0.12% | 2,489 | 0.33% | 0.24% |
| MAHE SEYCHELLES INTL | 2,472 | 0.12% | 3,561 | 0.48% | -30.58% |
| DUSSELDORF | 2,365 | 0.11% | | | |
| IZMIR-ADNAN MENDERES | 2,305 | 0.11% | | | |
| PREVEZA | 2,289 | 0.11% | 761 | 0.10% | |
| KARPATOS | 2,116 | 0.10% | | | |
| BELGRADE | 1,939 | 0.09% | 475 | 0.06% | |
| TRABZON | 1,763 | 0.08% | | | |
| SOCHI | 1,601 | 0.07% | 3 | | |





International Passenger Traffic

Distribution by First Destination for September

| Destination | September 2022 | | September 2021 | | |
|---------------------------|------------------|---------------|----------------|---------------|----------------|
| | Passengers | Rate of Total | Passengers | Rate of Total | Rate of Change |
| MALTA | 1,495 | 0.07% | 6 | | |
| TREVISO | 1,436 | 0.07% | 2,186 | 0.29% | -34.30% |
| HONG KONG INT'L | 1,269 | 0.06% | 418 | 0.05% | |
| MOSCOW-ZHUKOVSKY INTL AIR | 1,266 | 0.06% | | | |
| ZANZIBAR | 1,141 | 0.05% | 415 | 0.05% | 174.93% |
| TOULOUSE | 863 | 0.04% | | | |
| PALMA DE MALLORCA | 647 | 0.03% | | | |
| SATU MARE INTERNATIONAL A | 354 | 0.01% | | | |
| SAMOS | 315 | 0.01% | 1 | | |
| ESSAOUIRA-MOGADOR AIRPORT | 301 | 0.01% | | | |
| COLOGNE-BONN | 206 | 0.01% | | | |
| OTHERS | 2,676 | 0.13% | 77,121 | 10.48% | -96.53% |
| TOTAL | 2,050,829 | | 735,212 | | 178.94% |





Int'l Accumulated Passenger Traffic

Distribution by First Destination

| Destination | Accumulated 2022 | | Accumulated 2021 | | Rate of Change |
|-------------------------|------------------|---------------|------------------|---------------|----------------|
| | Passengers | Rate of Total | Passengers | Rate of Total | |
| ISTANBUL | 668,118 | 4.86% | 140,411 | 3.78% | |
| ISTANBUL-SABIHA GOKCHEN | 565,520 | 4.12% | 128,913 | 3.47% | |
| PARIS-CHARLES DE GAULLE | 549,866 | 4.00% | 172,355 | 4.64% | |
| ANTALYA | 508,383 | 3.70% | 66,657 | 1.79% | |
| NEW YORK - J.F.KENNEDY | 504,627 | 3.67% | 272,877 | 7.35% | 84.92% |
| DUBAI | 466,433 | 3.39% | 113,701 | 3.06% | |
| NEW YORK - NEWARK | 435,850 | 3.17% | 228,148 | 6.15% | 91.03% |
| ATHENS | 419,277 | 3.05% | 132,854 | 3.58% | |
| LONDON - HEATHROW | 413,772 | 3.01% | 123,987 | 3.34% | |
| ROME - FIUMICINO | 390,789 | 2.84% | 41,769 | 1.12% | |
| VIENNA | 373,868 | 2.72% | 122,560 | 3.30% | |
| BUDAPEST | 335,008 | 2.44% | 70,637 | 1.90% | |
| AMSTERDAM | 318,309 | 2.31% | 69,911 | 1.88% | |
| LARNACA | 317,163 | 2.31% | 72,308 | 1.94% | |
| FRANKFURT | 285,162 | 2.07% | 117,704 | 3.17% | 142.27% |
| BUCHAREST - OTOPENI | 284,020 | 2.06% | 75,988 | 2.04% | |
| MADRID | 276,466 | 2.01% | 29,941 | 0.80% | |
| LUTON | 255,296 | 1.86% | 18,784 | 0.50% | |
| HERAKLION | 232,452 | 1.69% | 83,470 | 2.25% | 178.48% |
| RHODES-PARADISI | 225,777 | 1.64% | 81,616 | 2.20% | 176.63% |
| ZURICH | 223,924 | 1.63% | 64,455 | 1.73% | |
| BERLIN BRANDENBURG INTL | 214,342 | 1.56% | 39,555 | 1.06% | |





Int'l Accumulated Passenger Traffic

Distribution by First Destination

| Destination | Accumulated 2022 | | Accumulated 2021 | | Rate of Change |
|---------------------|------------------|---------------|------------------|---------------|----------------|
| | Passengers | Rate of Total | Passengers | Rate of Total | |
| MUNICH | 206,331 | 1.50% | 29,280 | 0.78% | |
| WARSAW | 203,927 | 1.48% | 33,063 | 0.89% | |
| MILAN-MALPENSA | 200,811 | 1.46% | 26,845 | 0.72% | |
| PRAGUE-RUZYNE | 189,954 | 1.38% | 59,117 | 1.59% | |
| BATUMI | 182,430 | 1.32% | 82,333 | 2.21% | 121.57% |
| PARIS-ORLY | 180,906 | 1.31% | 26,605 | 0.71% | |
| BARCELONA | 178,614 | 1.30% | 13,617 | 0.36% | |
| TBILISI | 175,688 | 1.28% | 62,440 | 1.68% | 181.37% |
| PAPHOS | 174,671 | 1.27% | 51,129 | 1.37% | |
| SOFIA | 142,979 | 1.04% | 42,002 | 1.13% | |
| MIAMI INTERNATIONAL | 129,991 | 0.94% | 56,168 | 1.51% | 131.43% |
| TORONTO | 127,834 | 0.93% | 31,866 | 0.85% | |
| ABU DHABI | 120,224 | 0.87% | 6,091 | 0.16% | |
| BRUSSELS | 116,652 | 0.85% | 25,257 | 0.68% | |
| THESSALONIKI | 109,681 | 0.79% | 30,815 | 0.83% | |
| SAN FRANCISCO | 95,726 | 0.69% | 51,180 | 1.37% | 87.03% |
| LISBON | 94,015 | 0.68% | 7,086 | 0.19% | |
| ADDIS ABABA | 90,096 | 0.65% | 33,069 | 0.89% | 172.44% |
| SHARM EL SHEIKH | 89,727 | 0.65% | 530 | 0.01% | |
| KRAKOW | 88,283 | 0.64% | 11,823 | 0.31% | |
| GENEVA | 87,056 | 0.63% | 14,265 | 0.38% | |
| LOS ANGELES | 81,282 | 0.59% | 41,370 | 1.11% | 96.47% |





Int'l Accumulated Passenger Traffic

Distribution by First Destination

| Destination | Accumulated 2022 | | Accumulated 2021 | | |
|--------------------------|------------------|---------------|------------------|---------------|----------------|
| | Passengers | Rate of Total | Passengers | Rate of Total | Rate of Change |
| BURGAS | 80,015 | 0.58% | 19,769 | 0.53% | |
| MOSCOW-DOMODEDOVO | 73,302 | 0.53% | 26,753 | 0.72% | 173.99% |
| BERGAMO | 71,691 | 0.52% | 16,433 | 0.44% | |
| BANGKOK INTL.-SUARNABHUM | 70,462 | 0.51% | 7,771 | 0.20% | |
| CHISINAU | 68,916 | 0.50% | 29,037 | 0.78% | 137.33% |
| LONDON - GATWICK | 68,433 | 0.49% | | | |
| DALAMAN | 62,274 | 0.45% | 9,431 | 0.25% | |
| MARRAKESH | 59,668 | 0.43% | 2,476 | 0.06% | |
| NAPLES-CAPODICHINO | 56,832 | 0.41% | 1,418 | 0.03% | |
| NICE | 53,881 | 0.39% | 10,963 | 0.29% | |
| BAKU HEYDAR ALIYEV INT'L | 50,280 | 0.36% | 6,044 | 0.16% | |
| VARNA | 49,731 | 0.36% | 18,619 | 0.50% | 167.09% |
| BOSTON-LOGAN INT | 47,773 | 0.34% | | | |
| VENICE | 46,726 | 0.34% | 32 | | |
| TIVAT | 45,878 | 0.33% | 20,036 | 0.54% | 128.97% |
| MARSEILLE | 44,307 | 0.32% | 6,426 | 0.17% | |
| BRUSSELS - CHARLEROI | 44,243 | 0.32% | | | |
| CHICAGO - O'HARE | 43,462 | 0.31% | 20,599 | 0.55% | 110.99% |
| MIKONOS | 43,331 | 0.31% | 20,498 | 0.55% | 111.39% |
| VILNIUS INTL | 41,662 | 0.30% | 6,093 | 0.16% | |
| AMMAN (QUEEN ALIA INT'L) | 38,841 | 0.28% | 2,301 | 0.06% | |
| CORFU | 37,945 | 0.27% | 23,803 | 0.64% | 59.41% |





Int'l Accumulated Passenger Traffic

Distribution by First Destination

| Destination | Accumulated 2022 | | Accumulated 2021 | | |
|-------------------------|------------------|---------------|------------------|---------------|----------------|
| | Passengers | Rate of Total | Passengers | Rate of Total | Rate of Change |
| LYON - SATOLAS | 35,936 | 0.26% | 5,587 | 0.15% | |
| WASHINGTON-DULLES | 35,761 | 0.26% | | | |
| MANCHESTER | 35,559 | 0.25% | 5,164 | 0.13% | |
| DELHI | 34,432 | 0.25% | 5,435 | 0.14% | |
| KIEV KYIV-BORISPOL | 34,115 | 0.24% | 166,251 | 4.48% | -79.47% |
| VILAFRANCA-VERONA | 31,868 | 0.23% | 2,125 | 0.05% | |
| KOS | 30,885 | 0.22% | 928 | 0.02% | |
| BASEL | 30,484 | 0.22% | 8,252 | 0.22% | |
| CAIRO INTERNATIONAL | 30,141 | 0.21% | 509 | 0.01% | |
| MONTREAL - DORVAL | 29,482 | 0.21% | 5,277 | 0.14% | |
| TASHKENT | 28,390 | 0.20% | 4,364 | 0.11% | |
| CASABLANCA-MOHAMMED V | 27,899 | 0.20% | 141 | | |
| PHUKET | 26,953 | 0.19% | 6,817 | 0.18% | |
| SANTORINI | 26,643 | 0.19% | 12,611 | 0.33% | 111.26% |
| DUBAI AL MAKTOUM INT AP | 25,040 | 0.18% | 534 | 0.01% | |
| CLUJ NAPOCA | 24,717 | 0.18% | 6,526 | 0.17% | |
| BADEN BADEN | 23,926 | 0.17% | 8,276 | 0.22% | 189.10% |
| BOLOGNA-BORGIO PANIGALE | 23,644 | 0.17% | 84 | | |
| GRENOBLE-SAUNT GEOIRS | 23,098 | 0.16% | | | |
| HELSINKI | 22,844 | 0.16% | 3,327 | 0.08% | |
| IASI | 21,961 | 0.16% | 3,034 | 0.08% | |
| TURIN | 21,855 | 0.15% | 25 | | |





Int'l Accumulated Passenger Traffic

Distribution by First Destination

| Destination | Accumulated 2022 | | Accumulated 2021 | | |
|----------------------|------------------|---------------|------------------|---------------|----------------|
| | Passengers | Rate of Total | Passengers | Rate of Total | Rate of Change |
| IZMIR-ADNAN MENDERES | 21,630 | 0.15% | 90 | | |
| RIGA | 20,861 | 0.15% | 4,923 | 0.13% | |
| MOSCOW | 20,428 | 0.14% | 33,731 | 0.90% | -39.43% |
| CATANIA FONTANAROSSA | 20,137 | 0.14% | 2,672 | 0.07% | |
| BARI -PALESE MACCHIE | 19,480 | 0.14% | 935 | 0.02% | |
| KHANIA-SOUDABAY | 19,447 | 0.14% | 13,943 | 0.37% | 39.47% |
| COPENHAGEN KASTRUP | 19,038 | 0.13% | 2,907 | 0.07% | |
| MAHE SEYCHELLES INTL | 18,996 | 0.13% | 17,198 | 0.46% | 10.45% |
| MEMMINGEN | 18,959 | 0.13% | 7,017 | 0.18% | 170.18% |
| JOHANNESBURG | 18,922 | 0.13% | 105 | | |
| DEBRECEN | 18,776 | 0.13% | | | |
| BAHRAIN | 18,662 | 0.13% | 356 | | |
| PODGORICA | 18,237 | 0.13% | 272 | | |
| MINERALNYE VODY | 18,220 | 0.13% | 22 | | |
| STOCKHOLM-ARLANDA | 17,901 | 0.13% | 469 | 0.01% | |
| BELGRADE | 16,781 | 0.12% | 8,998 | 0.24% | 86.49% |
| ZAGREB | 14,758 | 0.10% | 249 | | |
| LJUBLJANA | 14,644 | 0.10% | 2,334 | 0.06% | |
| KATOWICE | 14,022 | 0.10% | 391 | 0.01% | |
| DUSSELDORF | 12,749 | 0.09% | 2 | | |
| TREVISO | 12,601 | 0.09% | 8,251 | 0.22% | 52.72% |
| MALTA | 11,500 | 0.08% | 111 | | |





Int'l Accumulated Passenger Traffic

Distribution by First Destination

| Destination | Accumulated 2022 | | Accumulated 2021 | | |
|---------------------------|------------------|---------------|------------------|---------------|----------------|
| | Passengers | Rate of Total | Passengers | Rate of Total | Rate of Change |
| SALZBURG | 11,078 | 0.08% | 1,106 | 0.02% | |
| SOCHI | 11,054 | 0.08% | 13 | | |
| PREVEZA | 10,761 | 0.07% | 3,726 | 0.10% | 188.80% |
| ROVANIEMI | 9,572 | 0.06% | | | |
| KARPATOS | 8,800 | 0.06% | | | |
| RZESZOW-JASIONKA | 8,582 | 0.06% | 508 | 0.01% | |
| TRABZON | 8,509 | 0.06% | 4 | | |
| HONG KONG INT'L | 6,966 | 0.05% | 2,095 | 0.05% | |
| REYKJAVIK | 6,633 | 0.04% | 3,295 | 0.08% | 101.30% |
| INNSBRUCK | 6,017 | 0.04% | 4 | | |
| ZAKYNTHOS | 5,977 | 0.04% | 9,521 | 0.25% | -37.22% |
| WARSAW- MODLIN | 5,872 | 0.04% | 2 | | |
| TOULOUSE | 5,528 | 0.04% | | | |
| SUCEAVA-ROMANIA | 5,277 | 0.03% | | | |
| ZANZIBAR | 5,193 | 0.03% | 3,069 | 0.08% | 69.20% |
| KILIMANJARO | 4,420 | 0.03% | 1,051 | 0.02% | |
| MOSCOW-ZHUKOVSKY INTL AIR | 4,023 | 0.02% | | | |
| ODESA | 3,947 | 0.02% | 17,062 | 0.45% | -76.86% |
| PALMA DE MALLORCA | 3,672 | 0.02% | 9 | | |
| BODRUM | 3,601 | 0.02% | 699 | 0.01% | |
| MINSK | 3,298 | 0.02% | 20,665 | 0.55% | -84.04% |
| OHRID | 2,631 | 0.01% | | | |





Int'l Accumulated Passenger Traffic

Distribution by First Destination

| Destination | Accumulated 2022 | | Accumulated 2021 | | |
|----------------|-------------------|---------------|------------------|---------------|----------------|
| | Passengers | Rate of Total | Passengers | Rate of Total | Rate of Change |
| ST. PETERSBURG | 2,502 | 0.01% | 2,782 | 0.07% | -10.06% |
| HAMBURG | 2,393 | 0.01% | 21 | | |
| POZNAN | 2,181 | 0.01% | 5 | | |
| COLOGNE-BONN | 2,011 | 0.01% | 8 | | |
| OTHERS | 29,555 | 0.21% | 40,270 | 1.08% | -26.60% |
| TOTAL | 13,723,388 | | 3,709,212 | | |



Cargo Activity





Cargo Handling

Distribution by Transporter

| Transporter | September 2022 (Ton) | September 2021 (Ton) | Rate of Change |
|---|----------------------|----------------------|----------------|
| Cargo on Passenger Aircrafts - Incoming | 8,555 | 5,400 | 58.42% |
| Cargo on Passenger Aircrafts - Outgoing | 6,192 | 4,850 | 27.67% |
| Total Cargo on Passenger Aircrafts | 14,747 | 10,249 | 43.88% |
| Cargo on Cargo Aircrafts - Incoming | 10,311 | 12,618 | -18.28% |
| Cargo on Cargo Aircrafts - Outgoing | 5,162 | 5,895 | -12.43% |
| Total Cargo on Cargo Aircrafts | 15,473 | 18,514 | -16.42% |
| Total | 30,220 | 28,763 | 5.06% |

Distribution by Months

| Month | 2022 (ton) | | | 2021 (ton) | | | Rate of Change |
|--------------|----------------|--------------|----------------|----------------|--------------|----------------|----------------|
| | Cargo | Mail | Total | Cargo | Mail | Total | |
| January | 30,378 | 570 | 30,948 | 28,571 | 632 | 29,203 | 5.97% |
| February | 29,608 | 580 | 30,188 | 26,508 | 321 | 26,830 | 12.51% |
| March | 33,710 | 625 | 34,335 | 31,396 | 546 | 31,942 | 7.49% |
| April | 31,673 | 685 | 32,358 | 28,779 | 745 | 29,524 | 9.59% |
| May | 31,540 | 683 | 32,223 | 29,512 | 544 | 30,056 | 7.20% |
| June | 28,632 | 601 | 29,233 | 30,775 | 586 | 31,361 | -6.78% |
| July | 29,677 | 557 | 30,233 | 30,404 | 682 | 31,086 | -2.74% |
| August | 30,694 | 628 | 31,322 | 33,557 | 582 | 34,139 | -8.25% |
| September | 29,579 | 640 | 30,220 | 28,160 | 602 | 28,763 | 5.06% |
| Total | 275,491 | 5,569 | 281,060 | 267,662 | 5,240 | 272,904 | 2.98% |





Cargo Handling on Passenger Aircrafts

Distribution by Airline for September

| | | September 2022 | | | | September 2021 | | | | |
|---------|--------------------------|----------------------|----------------------|-------------|---------------|----------------------|----------------------|-------------|---------------|----------------|
| Airline | | Incoming Cargo (Ton) | Outgoing Cargo (Ton) | Cargo (Ton) | Rate of Total | Incoming Cargo (Ton) | Outgoing Cargo (Ton) | Cargo (Ton) | Rate of Total | Rate of Change |
| LY | EL AL ISRAEL AIRLINES | 2,146 | 2,153 | 4,299 | 29.15% | 913 | 1,261 | 2,174 | 21.21% | 97.74% |
| TK | TURKISH AIRLINES | 1,487 | 294 | 1,780 | 12.07% | 891 | 132 | 1,023 | 9.98% | 73.99% |
| UA | UNITED AIRLINES | 820 | 956 | 1,777 | 12.04% | 763 | 1,218 | 1,982 | 19.33% | -10.34% |
| AF | AIR FRANCE | 567 | 397 | 964 | 6.53% | 373 | 169 | 542 | 5.28% | 77.85% |
| AC | AIR CANADA | 332 | 371 | 704 | 4.77% | 207 | 238 | 445 | 4.34% | 58.20% |
| AA | AMERICAN AIRLINES | 271 | 382 | 654 | 4.43% | 147 | 417 | 564 | 5.50% | 15.95% |
| EK | EMIRATES | 336 | 312 | 648 | 4.39% | | | | | |
| VS | VIRGIN ATLANTIC AIRWAYS | 344 | 210 | 554 | 3.75% | 323 | 115 | 439 | 4.28% | 26.19% |
| BA | BRITISH AIRWAYS PLC | 298 | 194 | 492 | 3.33% | 235 | 222 | 457 | 4.45% | 7.65% |
| ET | ETHIOPIAN AIRLINES | 282 | 86 | 368 | 2.49% | 177 | 108 | 285 | 2.78% | 29.12% |
| EY | ETIHAD AIRWAYS | 218 | 102 | 320 | 2.16% | 79 | 67 | 147 | 1.43% | 117.68% |
| IB | IBERIA | 226 | 87 | 313 | 2.12% | 88 | 64 | 151 | 1.47% | 107.28% |
| UX | AIR EUROPA Lineas Aereas | 235 | 60 | 295 | 2.00% | 4 | 2 | 6 | 0.05% | |
| DL | DELTA AIRLINES | 164 | 118 | 282 | 1.91% | 329 | 369 | 697 | 6.80% | -59.54% |
| PC | PEGASUS AIRLINES | 143 | 95 | 238 | 1.61% | 58 | 40 | 98 | 0.95% | 142.85% |
| AI | AIR INDIA | 99 | 85 | 184 | 1.24% | 34 | 35 | 69 | 0.67% | 166.66% |
| AZ | ITALIA TRASPORTO AEREO | 54 | 52 | 106 | 0.71% | 1 | 12 | 13 | 0.12% | |
| LH | LUFTHANSA | 61 | 41 | 102 | 0.69% | 40 | 18 | 58 | 0.56% | 75.86% |
| FZ | FLYDUBAI | 86 | 11 | 97 | 0.65% | 68 | 6 | 73 | 0.71% | 32.87% |
| A3 | AEGEAN AIRLINES | 64 | 21 | 85 | 0.57% | 13 | 18 | 31 | 0.30% | 174.19% |
| LX | SWISS INT'L AIRLINES | 47 | 34 | 81 | 0.54% | 412 | 183 | 595 | 5.80% | -86.38% |
| CX | CATHAY PACIFIC AIRWAYS | 27 | 16 | 44 | 0.29% | 99 | 31 | 131 | 1.27% | -66.41% |





Cargo Handling on Passenger Aircrafts

Distribution by Airline for September

| September 2022 | | | | | September 2021 | | | | |
|------------------------------|----------------------|----------------------|---------------|---------------|----------------------|----------------------|---------------|---------------|----------------|
| Airline | Incoming Cargo (Ton) | Outgoing Cargo (Ton) | Cargo (Ton) | Rate of Total | Incoming Cargo (Ton) | Outgoing Cargo (Ton) | Cargo (Ton) | Rate of Total | Rate of Change |
| LO LOT POLISH AIRLINES | 37 | 4 | 41 | 0.27% | 17 | 1 | 17 | 0.16% | 141.17% |
| OS AUSTRIAN AIRLINES | 32 | 6 | 37 | 0.25% | 13 | 10 | 24 | 0.23% | 54.16% |
| AT ROYAL AIR MAROC | 24 | 4 | 29 | 0.19% | | | | | |
| HY UZBEKISTAN AIR | 10 | 15 | 25 | 0.16% | 1 | 9 | 10 | 0.09% | 150.00% |
| QS SMARTWINGS | 19 | 1 | 20 | 0.13% | 12 | 3 | 15 | 0.14% | 33.33% |
| QY EUROPEAN AIR TRANSPORT | | 20 | 20 | 0.13% | | | | | |
| HM AIR SEYCHELLES | 19 | | 19 | 0.12% | 4 | | 4 | 0.03% | |
| RO TAROM - RUMANIAN AIR TRAN | 14 | 5 | 19 | 0.12% | 8 | 4 | 12 | 0.11% | 58.33% |
| XC CORONDON AIRLINES | 8 | 10 | 19 | 0.12% | | | | | |
| SN BRUSSELS AIRLINES | 16 | 2 | 18 | 0.12% | 2 | 1 | 3 | 0.02% | |
| GF GULF AIR - BAHREIN | 11 | 6 | 17 | 0.11% | | | | | |
| BT AIR BALTIC | 12 | 5 | 17 | 0.11% | 6 | 1 | 7 | 0.06% | 142.85% |
| TP AIR PORTUGAL | 12 | 4 | 16 | 0.10% | 1 | 4 | 5 | 0.04% | |
| RJ ROYAL JORDANIAN | 8 | 3 | 11 | 0.07% | 3 | | 3 | 0.02% | |
| U8 TUS AIRWAYS | 8 | 3 | 11 | 0.07% | | 1 | 1 | | |
| OTHERS | 17 | 26 | 43 | 0.29% | 78 | 92 | 170 | 1.65% | -74.70% |
| TOTAL | 8,555 | 6,192 | 14,747 | | 5,400 | 4,850 | 10,249 | | 43.88% |





Accumulated Cargo Handling on Passengers Aircrafts

Distribution by Airline

| | | Accumulated 2022 | | | | Accumulated 2021 | | | | |
|---------|--------------------------|----------------------|----------------------|-------------|---------------|----------------------|----------------------|-------------|---------------|----------------|
| Airline | | Incoming Cargo (Ton) | Outgoing Cargo (Ton) | Cargo (Ton) | Rate of Total | Incoming Cargo (Ton) | Outgoing Cargo (Ton) | Cargo (Ton) | Rate of Total | Rate of Change |
| LY | EL AL ISRAEL AIRLINES | 18,486 | 18,372 | 36,858 | 31.70% | 7,363 | 10,085 | 17,448 | 26.48% | 111.24% |
| UA | UNITED AIRLINES | 6,882 | 8,322 | 15,204 | 13.07% | 4,648 | 7,674 | 12,322 | 18.70% | 23.38% |
| TK | TURKISH AIRLINES | 10,670 | 2,142 | 12,812 | 11.02% | 4,341 | 711 | 5,052 | 7.66% | 153.60% |
| AF | AIR FRANCE | 4,463 | 3,320 | 7,783 | 6.69% | 1,843 | 918 | 2,762 | 4.19% | 181.78% |
| AA | AMERICAN AIRLINES | 2,786 | 3,660 | 6,447 | 5.54% | 1,076 | 1,876 | 2,952 | 4.48% | 118.39% |
| AC | AIR CANADA | 1,827 | 2,426 | 4,253 | 3.65% | 963 | 1,295 | 2,258 | 3.42% | 88.35% |
| VS | VIRGIN ATLANTIC AIRWAYS | 2,029 | 1,417 | 3,446 | 2.96% | 1,575 | 896 | 2,471 | 3.75% | 39.45% |
| DL | DELTA AIRLINES | 1,562 | 1,805 | 3,367 | 2.89% | 2,535 | 2,514 | 5,049 | 7.66% | -33.31% |
| BA | BRITISH AIRWAYS PLC | 1,869 | 959 | 2,828 | 2.43% | 1,030 | 1,047 | 2,078 | 3.15% | 36.09% |
| ET | ETHIOPIAN AIRLINES | 1,717 | 805 | 2,522 | 2.16% | 1,662 | 1,031 | 2,693 | 4.08% | -6.34% |
| IB | IBERIA | 1,559 | 854 | 2,413 | 2.07% | 944 | 457 | 1,401 | 2.12% | 72.23% |
| UX | AIR EUROPA Lineas Aereas | 1,782 | 584 | 2,365 | 2.03% | 54 | 62 | 116 | 0.17% | |
| EY | ETIHAD AIRWAYS | 1,286 | 896 | 2,181 | 1.87% | 580 | 558 | 1,139 | 1.72% | 91.48% |
| EK | EMIRATES | 958 | 1,027 | 1,985 | 1.70% | | | | | |
| LX | SWISS INT'L AIRLINES | 1,047 | 610 | 1,657 | 1.42% | 2,153 | 1,201 | 3,354 | 5.09% | -50.59% |
| PC | PEGASUS AIRLINES | 833 | 743 | 1,576 | 1.35% | 510 | 292 | 802 | 1.21% | 96.50% |
| AI | AIR INDIA | 756 | 736 | 1,492 | 1.28% | 224 | 209 | 433 | 0.65% | |
| FZ | FLYDUBAI | 776 | 131 | 907 | 0.78% | 323 | 54 | 377 | 0.57% | 140.58% |
| LH | LUFTHANSA | 443 | 313 | 756 | 0.65% | 200 | 82 | 283 | 0.42% | 167.13% |
| CX | CATHAY PACIFIC AIRWAYS | 411 | 296 | 707 | 0.60% | 470 | 193 | 664 | 1.00% | 6.47% |
| A3 | AEGEAN AIRLINES | 458 | 109 | 567 | 0.48% | 88 | 42 | 130 | 0.19% | |
| AZ | ITALIA TRASPORTO AEREO | 198 | 297 | 496 | 0.42% | 7 | 25 | 33 | 0.05% | |





Accumulated Cargo Handling on Passengers Aircrafts

Distribution by Airline

| | | Accumulated 2022 | | | | Accumulated 2021 | | | | |
|---------|---------------------------|----------------------|----------------------|----------------|---------------|----------------------|----------------------|---------------|---------------|----------------|
| Airline | | Incoming Cargo (Ton) | Outgoing Cargo (Ton) | Cargo (Ton) | Rate of Total | Incoming Cargo (Ton) | Outgoing Cargo (Ton) | Cargo (Ton) | Rate of Total | Rate of Change |
| LO | LOT POLISH AIRLINES | 274 | 118 | 391 | 0.33% | 76 | 8 | 84 | 0.12% | |
| GF | GULF AIR - BAHREIN | 161 | 91 | 252 | 0.21% | | | | | |
| HY | UZBEKISTAN AIR | 94 | 147 | 241 | 0.20% | 20 | 21 | 41 | 0.06% | |
| OS | AUSTRIAN AIRLINES | 152 | 68 | 220 | 0.18% | 55 | 26 | 81 | 0.12% | 171.60% |
| QS | SMARTWINGS | 174 | 19 | 193 | 0.16% | 27 | 10 | 37 | 0.05% | |
| RO | TAROM - RUMANIAN AIR TRAN | 123 | 44 | 167 | 0.14% | 50 | 21 | 71 | 0.10% | 135.21% |
| SN | BRUSSELS AIRLINES | 149 | 14 | 163 | 0.14% | 17 | 2 | 19 | 0.02% | |
| XC | CORONDON AIRLINES | 132 | 13 | 145 | 0.12% | | | | | |
| AT | ROYAL AIR MAROC | 89 | 46 | 136 | 0.11% | | | | | |
| HM | AIR SEYCHELLES | 103 | 8 | 112 | 0.09% | 88 | 1 | 89 | 0.13% | 25.84% |
| BT | AIR BALTIC | 88 | 22 | 110 | 0.09% | 24 | 9 | 33 | 0.05% | |
| TP | AIR PORTUGAL | 62 | 27 | 88 | 0.07% | 1 | 4 | 5 | | |
| U8 | TUS AIRWAYS | 72 | 15 | 86 | 0.07% | 1 | 1 | 2 | | |
| RJ | ROYAL JORDANIAN | 42 | 11 | 53 | 0.04% | 3 | | 3 | | |
| QY | EUROPEAN AIR TRANSPORT | | 20 | 20 | 0.01% | | | | | |
| | OTHERS | 565 | 697 | 1,263 | 1.08% | 704 | 897 | 1,601 | 2.43% | -21.11% |
| | TOTAL | 65,076 | 51,185 | 116,260 | | 33,656 | 32,226 | 65,882 | | 76.46% |





Cargo Handling on Cargo Aircrafts

Distribution by Airlines September

| | | September 2022 | | | | September 2021 | | | | |
|---------|------------------------|----------------------|----------------------|---------------|---------------|----------------------|----------------------|---------------|---------------|----------------|
| Airline | | Incoming Cargo (Ton) | Outgoing Cargo (Ton) | Cargo (Ton) | Rate of Total | Incoming Cargo (Ton) | Outgoing Cargo (Ton) | Cargo (Ton) | Rate of Total | Rate of Change |
| ICL | C.A.L ISRAELI CARGO | 2,095 | 851 | 2,946 | 19.03% | 2,364 | 1,341 | 3,705 | 20.01% | -20.48% |
| QY | EUROPEAN AIR TRANSPORT | 1,236 | 726 | 1,963 | 12.68% | 1,083 | 635 | 1,718 | 9.27% | 14.26% |
| LY | EL AL ISRAEL AIRLINES | 1,086 | 684 | 1,771 | 11.44% | 2,005 | 988 | 2,993 | 16.16% | -40.82% |
| MNB | MNG CARGO AIRLINES | 1,545 | 189 | 1,735 | 11.21% | 1,176 | 185 | 1,361 | 7.35% | 27.47% |
| TK | TURKISH AIRLINES | 845 | 576 | 1,421 | 9.18% | 1,591 | 248 | 1,839 | 9.93% | -22.72% |
| AZG | SILK WAY WEST AIRLINES | 596 | 757 | 1,352 | 8.73% | 373 | 529 | 902 | 4.87% | 49.88% |
| FX | FEDERAL EXPRESS | 793 | 421 | 1,215 | 7.85% | 518 | 257 | 775 | 4.18% | 56.77% |
| LH | LUFTHANSA | 372 | 346 | 718 | 4.64% | 248 | 410 | 658 | 3.55% | 9.11% |
| 5X | UPS AIRLINES | 383 | 315 | 698 | 4.51% | | | | | |
| 3U | SICHUAN AIRLINES | 493 | 85 | 579 | 3.74% | 143 | 72 | 215 | 1.16% | 169.30% |
| 9T | ACT AIRLINES Inc. | 521 | | 521 | 3.36% | | | | | |
| HU | HAINAN AIRLINES | 146 | 87 | 234 | 1.51% | | | | | |
| CHG | CHALLENGE AIRLINES | | 94 | 94 | 0.60% | | | | | |
| ET | ETHIOPIAN AIRLINES | 78 | 6 | 84 | 0.54% | 57 | 33 | 90 | 0.48% | -6.66% |
| M4 | POSTE AIR CARGO | 57 | 19 | 75 | 0.48% | 28 | 6 | 33 | 0.17% | 127.27% |
| MB | MNG AIRLINES | 28 | 2 | 30 | 0.19% | | | | | |
| CX | CATHAY PACIFIC AIRWAYS | 20 | | 20 | 0.12% | 427 | 195 | 622 | 3.35% | -96.78% |
| | OTHERS | 16 | 3 | 19 | 0.12% | 2,606 | 996 | 3,602 | 19.45% | -99.47% |
| | TOTAL | 10,311 | 5,162 | 15,473 | | 12,618 | 5,895 | 18,514 | | -16.42% |





Accumulated Cargo Handling on Cargo Aircrafts

Distribution by Airline

| | | Accumulated 2022 | | | | Accumulated 2021 | | | | |
|---------|------------------------|----------------------|----------------------|----------------|---------------|----------------------|----------------------|----------------|---------------|----------------|
| Airline | | Incoming Cargo (Ton) | Outgoing Cargo (Ton) | Cargo (Ton) | Rate of Total | Incoming Cargo (Ton) | Outgoing Cargo (Ton) | Cargo (Ton) | Rate of Total | Rate of Change |
| ICL | C.A.L ISRAELI CARGO | 21,143 | 9,840 | 30,983 | 18.80% | 31,255 | 17,227 | 48,482 | 23.41% | -36.09% |
| LY | EL AL ISRAEL AIRLINES | 11,702 | 8,477 | 20,179 | 12.24% | 22,689 | 13,466 | 36,155 | 17.46% | -44.18% |
| QY | EUROPEAN AIR TRANSPORT | 11,645 | 7,262 | 18,908 | 11.47% | 10,429 | 7,287 | 17,717 | 8.55% | 6.72% |
| MNB | MNG CARGO AIRLINES | 11,278 | 1,077 | 12,355 | 7.49% | 11,598 | 2,170 | 13,768 | 6.65% | -10.26% |
| AZG | SILK WAY WEST AIRLINES | 5,558 | 6,473 | 12,031 | 7.30% | 5,886 | 6,781 | 12,667 | 6.11% | -5.02% |
| TK | TURKISH AIRLINES | 8,169 | 3,049 | 11,218 | 6.80% | 21,059 | 4,703 | 25,762 | 12.44% | -56.45% |
| FX | FEDERAL EXPRESS | 6,446 | 3,623 | 10,069 | 6.10% | 4,589 | 3,050 | 7,639 | 3.68% | 31.81% |
| 5X | UPS AIRLINES | 3,824 | 2,713 | 6,536 | 3.96% | | | | | |
| LH | LUFTHANSA | 3,565 | 2,863 | 6,428 | 3.90% | 5,332 | 4,093 | 9,424 | 4.55% | -31.79% |
| 3U | SICHUAN AIRLINES | 3,887 | 1,014 | 4,902 | 2.97% | 918 | 360 | 1,278 | 0.61% | |
| HU | HAINAN AIRLINES | 3,583 | 774 | 4,357 | 2.64% | 3,560 | 74 | 3,634 | 1.75% | 19.89% |
| 9T | ACT AIRLINES Inc. | 4,032 | 26 | 4,058 | 2.46% | 103 | 46 | 149 | 0.07% | |
| CX | CATHAY PACIFIC AIRWAYS | 1,496 | 1,086 | 2,582 | 1.56% | 3,032 | 1,991 | 5,022 | 2.42% | -48.58% |
| ET | ETHIOPIAN AIRLINES | 1,634 | 439 | 2,073 | 1.25% | 1,022 | 561 | 1,583 | 0.76% | 30.95% |
| M4 | POSTE AIR CARGO | 1,129 | 391 | 1,520 | 0.92% | 373 | 148 | 520 | 0.25% | 192.30% |
| CHG | CHALLENGE AIRLINES | | 191 | 191 | 0.11% | | | | | |
| MB | MNG AIRLINES | 28 | 2 | 30 | 0.01% | | | | | |
| | OTHERS | 8,495 | 7,886 | 16,382 | 9.94% | 13,964 | 9,254 | 23,218 | 11.21% | -29.44% |
| | TOTAL | 107,614 | 57,186 | 164,800 | | 135,809 | 71,211 | 207,022 | | -20.39% |





Cargo Handling on Cargo Aircrafts

Distribution by Countries for September

| Country | September 2022 | | | | September 2021 | | | | |
|--------------|----------------------|----------------------|---------------|---------------|----------------------|----------------------|---------------|---------------|----------------|
| | Incoming Cargo (Ton) | Outgoing Cargo (Ton) | Cargo (Ton) | Rate of Total | Incoming Cargo (Ton) | Outgoing Cargo (Ton) | Cargo (Ton) | Rate of Total | Rate of Change |
| BELGIUM | 2,563 | 1,720 | 4,283 | 27.68% | 3,258 | 2,693 | 5,950 | 32.13% | -28.01% |
| TURKEY | 2,583 | 662 | 3,246 | 20.97% | 2,093 | 433 | 2,526 | 13.64% | 28.50% |
| GERMANY | 1,926 | 1,193 | 3,118 | 20.15% | 2,176 | 645 | 2,821 | 15.23% | 10.52% |
| AZERBAIJAN | 596 | 757 | 1,352 | 8.73% | 373 | 529 | 903 | 4.87% | 49.72% |
| NORWAY | 1,106 | | 1,106 | 7.14% | 798 | | 798 | 4.31% | 38.59% |
| CHINA | 660 | 173 | 832 | 5.37% | 1,970 | 465 | 2,435 | 13.15% | -65.83% |
| FRANCE | 380 | 84 | 464 | 2.99% | 79 | 135 | 214 | 1.15% | 116.82% |
| CYPRUS | 347 | 79 | 426 | 2.75% | 318 | 85 | 403 | 2.17% | 5.70% |
| EGYPT | | 167 | 167 | 1.07% | | 410 | 410 | 2.21% | -59.26% |
| AUSTRIA | | 150 | 150 | 0.96% | | | | | |
| ETHIOPIA | 78 | 6 | 84 | 0.54% | 57 | 33 | 90 | 0.48% | -6.66% |
| JORDAN | 12 | 66 | 78 | 0.50% | 2 | | 2 | 0.01% | |
| ITALY | 57 | 19 | 75 | 0.48% | 31 | 11 | 42 | 0.22% | 78.57% |
| SERBIA | | 56 | 56 | 0.36% | | | | | |
| MALTA | | 25 | 25 | 0.16% | | | | | |
| OTHERS | 4 | 6 | 11 | 0.07% | 1,463 | 458 | 1,921 | 10.37% | -99.42% |
| TOTAL | 10,311 | 5,162 | 15,473 | | 12,618 | 5,895 | 18,514 | | -16.42% |





Accumulated Cargo Handling on Cargo Aircrafts

Distribution by Countries

| Countries | Accumulated 2022 | | | | Accumulated 2021 | | | | |
|--------------|----------------------|----------------------|----------------|---------------|----------------------|----------------------|----------------|---------------|----------------|
| | Incoming Cargo (Ton) | Outgoing Cargo (Ton) | Cargo (Ton) | Rate of Total | Incoming Cargo (Ton) | Outgoing Cargo (Ton) | Cargo (Ton) | Rate of Total | Rate of Change |
| BELGIUM | 29,631 | 23,635 | 53,266 | 32.32% | 33,066 | 30,227 | 63,293 | 30.57% | -15.84% |
| GERMANY | 18,631 | 10,788 | 29,420 | 17.85% | 22,490 | 8,351 | 30,840 | 14.89% | -4.60% |
| TURKEY | 20,103 | 3,909 | 24,012 | 14.57% | 28,311 | 7,044 | 35,355 | 17.07% | -32.08% |
| CHINA | 11,422 | 3,045 | 14,467 | 8.77% | 22,201 | 5,337 | 27,538 | 13.30% | -47.46% |
| AZERBAIJAN | 5,558 | 6,497 | 12,055 | 7.31% | 5,887 | 6,713 | 12,600 | 6.08% | -4.32% |
| NORWAY | 8,213 | 1 | 8,215 | 4.98% | 8,243 | 51 | 8,294 | 4.00% | -0.95% |
| FRANCE | 2,660 | 1,191 | 3,851 | 2.33% | 900 | 1,876 | 2,776 | 1.34% | 38.72% |
| CYPRUS | 2,940 | 556 | 3,496 | 2.12% | 3,063 | 666 | 3,729 | 1.80% | -6.24% |
| EGYPT | 3 | 2,278 | 2,281 | 1.38% | | 3,132 | 3,132 | 1.51% | -27.17% |
| ETHIOPIA | 1,559 | 439 | 1,998 | 1.21% | 1,022 | 561 | 1,583 | 0.76% | 26.21% |
| ITALY | 1,126 | 392 | 1,518 | 0.92% | 563 | 241 | 803 | 0.38% | 89.04% |
| AUSTRIA | 484 | 832 | 1,316 | 0.79% | 413 | | 413 | 0.19% | |
| JORDAN | 81 | 252 | 333 | 0.20% | 3 | 21 | 24 | 0.01% | |
| SERBIA | | 56 | 56 | 0.03% | | 1 | 1 | | |
| MALTA | | 25 | 25 | 0.01% | | 46 | 46 | 0.02% | -45.65% |
| OTHERS | 5,201 | 3,291 | 8,492 | 5.15% | 9,648 | 6,945 | 16,592 | 8.01% | -48.81% |
| TOTAL | 107,614 | 57,186 | 164,800 | | 135,809 | 71,211 | 207,022 | | -20.39% |



Domestic Activity

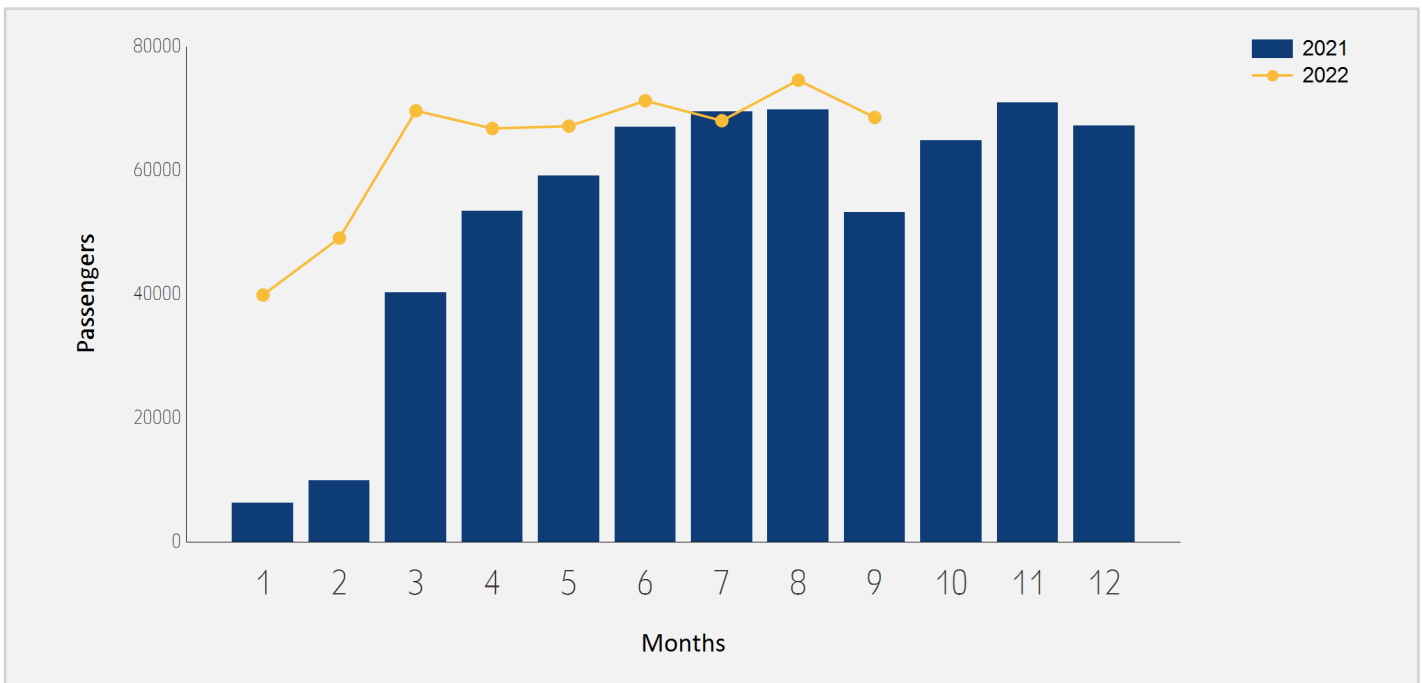




Domestic Passenger Traffic

Distribution by Months

| Month | 2022 | 2021 | Rate of Change |
|--------------|----------------|----------------|----------------|
| January | 39,890 | 6,294 | |
| February | 49,086 | 9,936 | |
| March | 69,648 | 40,263 | 72.98% |
| April | 66,790 | 53,421 | 25.02% |
| May | 67,161 | 59,126 | 13.58% |
| June | 71,273 | 67,065 | 6.27% |
| July | 68,047 | 69,490 | -2.07% |
| August | 74,592 | 69,828 | 6.82% |
| September | 68,573 | 53,261 | 28.74% |
| Total | 575,060 | 428,684 | 34.14% |

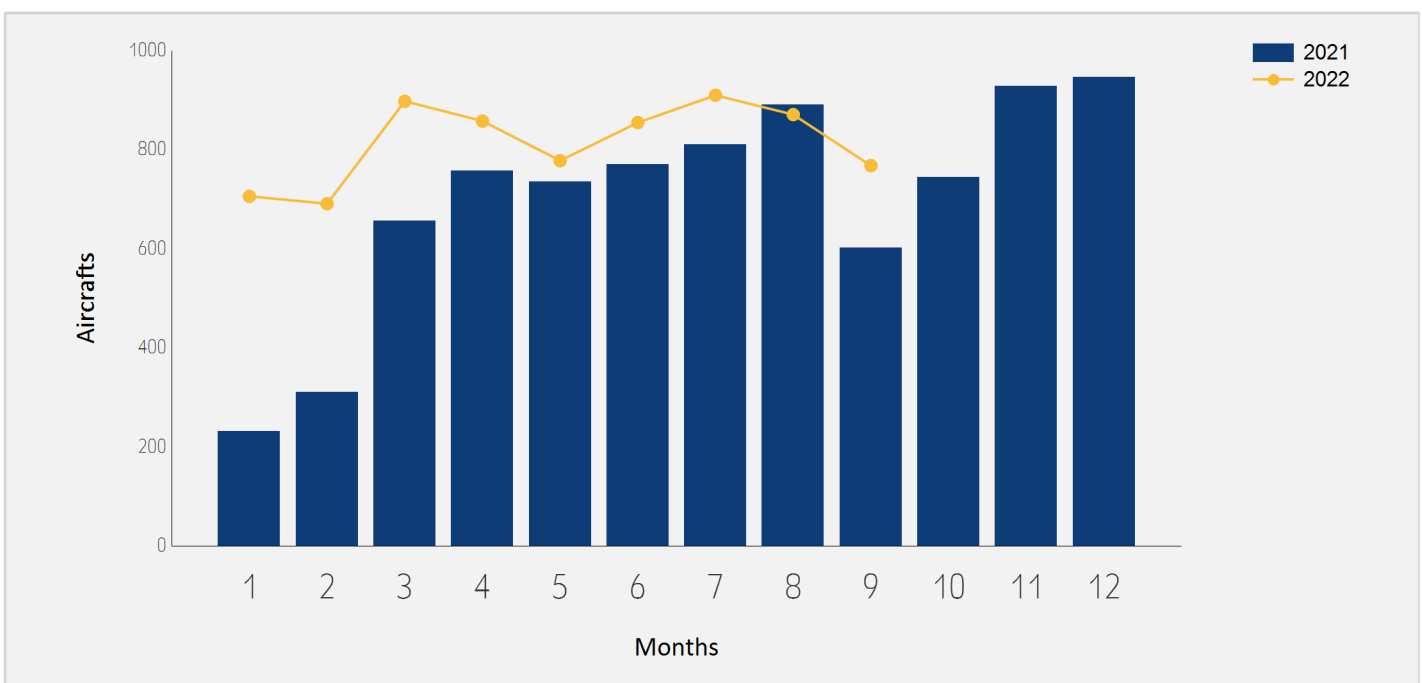




Domestic Aircrafts Traffic

Distribution by Months

| Month | 2022 | 2021 | Rate of Change |
|--------------|--------------|--------------|----------------|
| January | 706 | 231 | |
| February | 691 | 311 | 122.18% |
| March | 898 | 656 | 36.89% |
| April | 858 | 757 | 13.34% |
| May | 778 | 735 | 5.85% |
| June | 855 | 770 | 11.03% |
| July | 910 | 811 | 12.20% |
| August | 871 | 891 | -2.24% |
| September | 768 | 602 | 27.57% |
| Total | 7,335 | 5,764 | 27.25% |





Domestic Passengers Traffic

Distribution by Airlines for September

| | | September 2022 | | September 2021 | | |
|---------|------------------------|----------------|---------------|----------------|---------------|----------------|
| Airline | | Passengers | Rate of Total | Passengers | Rate of Total | Rate of Change |
| IZ | ARKIA ISRAELI AIRLINES | 43,136 | 62.90% | 32,030 | 60.13% | 34.67% |
| 6H | ISRAIR AIRLINES | 25,437 | 37.09% | 21,058 | 39.53% | 20.79% |
| TOTAL | | 68,573 | | 53,261 | | 28.74% |

Accumulated Domestic Passengers Traffic

Distribution by Airlines

| | | Accumulated 2022 | | Accumulated 2021 | | |
|---------|------------------------|------------------|---------------|------------------|---------------|----------------|
| Airline | | Passengers | Rate of Total | Passengers | Rate of Total | Rate of Change |
| IZ | ARKIA ISRAELI AIRLINES | 352,211 | 61.24% | 242,845 | 56.64% | 45.03% |
| 6H | ISRAIR AIRLINES | 221,969 | 38.59% | 185,140 | 43.18% | 19.89% |
| FX | FEDERAL EXPRESS | | | | | |
| OTHERS | | 880 | 0.15% | 699 | 0.16% | 25.89% |
| TOTAL | | 575,060 | | 428,684 | | 34.14% |





Domestic Passenger Traffic

Distribution by Destinations for September

| Destination | September 2022 | | September 2021 | | Rate of Change |
|--------------|----------------|---------------|----------------|---------------|----------------|
| | Passengers | Rate of Total | Passengers | Rate of Total | |
| RAMON | 68,363 | 99.69% | 53,090 | 99.67% | 28.76% |
| OTHERS | 210 | 0.30% | 171 | 0.32% | 22.80% |
| TOTAL | 68,573 | | 53,261 | | 28.74% |

Accumulated Domestic Passenger Traffic

Distribution by Destinations

| Destination | Accumulated 2022 | | Accumulated 2021 | | Rate of Change |
|--------------|------------------|---------------|------------------|---------------|----------------|
| | Passengers | Rate of Total | Passengers | Rate of Total | |
| RAMON | 571,431 | 99.36% | 427,875 | 99.81% | 33.55% |
| OTHERS | 3,629 | 0.63% | 809 | 0.18% | |
| TOTAL | 575,060 | | 428,684 | | 34.14% |

