



Monthly Report

Ben Gurion International Airport

March 2025





Israel Airport Authority

Ben Gurion International Airport

Produced by the Industry & Management Department

This report is protected by copyright and is the exclusive property of the Israel Airports Authority.

It must be emphasized that the data in the report are based on the reports of the airlines, and received under their responsibility.

The information is intended for personal use, and therefore may not be quoted or passed on to any third party without written permission from the Israel Airports Authority.

In addition, no commercial use may be made of this report.

Edit Yehoshua

Activity Coordinator

Tel. +972-3-9752017

Email: edity@iaa.gov.il

Rachel Lehava

Manager, Industrial & Management Dep.

Tel. +972-3-9752019

Email: rachelle@iaa.gov.il

Dimitry Shumacher

Head, Industrial & Management Dep.

Tel. +972-3-9750193

Email: dimitrysh@iaa.gov.il





Dear friends and partners,

I hereby respectfully submit for your review a report summarizing the aviation activity at Ben - Gurion International Airport in March 2025.

During the month, a total of 1,427,487 passengers on 10,880 international and domestic flights passed through Ben- Gurion Airport.

International passenger traffic in March totaled 1,367,313 passengers representing an increase of 51.54% compared to March 2024.

International aircraft traffic totaled 10,302 flights, representing an increase of 51.92% compared to March 2024.

International passenger traffic at Terminal 3 this month totaled 1,352,823 passengers. Passengers on International flights from Terminal 1, serving departing passengers only, totaled 14,490.

On domestic flights 60,174 passengers passed through Ben- Gurion Airport this month, compared with 56,042 in March 2024, an increase of 7.37%.

Israeli airlines carried 782,528 passengers in this month, 57.23% of all travelers passing through Ben - Gurion Airport, an increase of 29.86% relative to the previous March.

The airlines which contributed the most to the increase of passenger traffic this month are: WIZZAIR, ISRAIR AIRLINES and EL AL ISRAEL AIRLINES.

The Destination with the highest volume of activity was DUBAI with a total of 100,274 passengers to and from, an increase of 100.08% compared to the previous March.

The country with the highest volume of activity was the UNITED ARAB EMIRATES, with 131,052 passengers, constituting 9.58% of all activity.

Of the leading countries, the highest growth relative to last March was recorded in passenger traffic to UNITED ARAB EMIRATES, ITALY and GERMANY.

Cargo transportation this month stood at 34,876 tons and reflects an increase of 15.13% compared to March 2024. 8,498 tons were transported in passenger aircraft and 26,378 tons in cargo aircraft.

Below you will find additional tables providing details about movements of aircraft, passengers and cargo at Ben - Gurion International Airport.

*The Data is displayed according to actual UTC time.

Sincerely yours,

Udi Bar Oz

Managing Director,
Ben-Gurion International Airport





Content



Aviation Activity

Aviation Activity Summary	1
International Activity Summary	2 - 4
Domestic Activity Summary	5



International Activity

Distribution By Months	7 - 8
Distribution By Airlines	9 - 15
Distribution By Countries	16 - 19
Distribution By First Destination	20 - 29



Cargo Activity

Distribution by Transporter	31
Distribution By Months	31
Distribution By Airlines	32 - 38
Distribution By Countries	39 - 41



Domestic Activity

Distribution By Months	43 - 44
Distribution By Airlines	45
Distribution By Destinations	46





Passengers and Aircrafts

Aviation Activity at Ben Gurion International Airport

International Activity

	Current Month			Accumulated Since the beginning of the year		
	March 2025	March 2024	Rate Of Change	2025	2024	Rate Of Change
Incoming Aircrafts	5,151	3,391	51.90%	13,592	8,370	62.38%
Outgoing Aircrafts	5,151	3,390	51.94%	13,590	8,368	62.40%
Total Aircrafts	10,302	6,781	51.92%	27,182	16,738	62.39%
Incoming Passengers	665,771	451,045	47.60%	1,782,001	1,100,514	61.92%
Outgoing Passengers	701,542	451,207	55.48%	1,803,148	1,096,259	64.48%
Transit Passengers	159	208	-23.55%	382	678	-43.65%
Total Passengers	1,367,313	902,252	51.54%	3,585,149	2,196,773	63.20%

Domestic Activity

	Current Month			Accumulated Since the beginning of the year		
	March 2025	March 2024	Rate Of Change	2025	2024	Rate Of Change
Aircrafts	578	495	16.76%	1,587	1,478	7.37%
Passengers	60,174	56,042	7.37%	168,885	160,913	4.95%

International and Domestic Activity Summary

	Current Month			Accumulated Since the beginning of the year		
	March 2025	March 2024	Rate Of Change	2025	2024	Rate Of Change
Aircrafts	10,880	7,276	49.53%	28,769	18,216	57.93%
Passengers	1,427,487	958,294	48.96%	3,754,034	2,357,686	59.22%





Passengers and Aircrafts

Int'l Aviation Activity at Ben Gurion International Airport by Terminal

Terminal 3

	Current Month			Accumulated Since the beginning of the year		
	March 2025	March 2024	Rate of Change	2025	2024	Rate of Change
Incoming Aircrafts	5,151	3,391	51.90%	13,592	8,370	62.38%
Outgoing Aircrafts	5,071	3,390	49.58%	13,510	8,368	61.44%
Total Aircrafts	10,222	6,781	50.74%	27,102	16,738	61.91%
Incoming Passengers	665,771	451,045	47.60%	1,782,001	1,100,514	61.92%
Outgoing Passengers	687,052	451,207	52.26%	1,788,658	1,096,259	63.16%
Transit Passengers	159	208	-23.55%	382	678	-43.65%
Total Passengers	1,352,823	902,252	49.93%	3,570,659	2,196,773	62.54%

Terminal 1

	Current Month			Accumulated Since the beginning of the year		
	March 2025	March 2024	Rate of Change	2025	2024	Rate of Change
Incoming Aircrafts						
Outgoing Aircrafts	80			80		
Total Aircrafts	80			80		
Incoming Passengers						
Outgoing Passengers	14,490			14,490		
Total Passengers	14,490			14,490		





Passengers and Aircrafts

Int'l Aviation Activity at Ben Gurion International Airport by Flight Type

Schedule and Charter Flights

	Current Month			Accumulated Since the beginning of the year		
	March 2025	March 2024	Rate of Change	2025	2024	Rate of Change
Incoming Aircrafts	4,381	2,689	62.92%	11,400	6,480	75.92%
Outgoing Aircrafts	4,384	2,713	61.59%	11,431	6,560	74.25%
Total Aircrafts	8,765	5,402	62.25%	22,831	13,040	75.08%
Incoming Passengers	664,718	449,886	47.75%	1,778,511	1,097,346	62.07%
Outgoing Passengers	700,642	450,157	55.64%	1,800,270	1,093,353	64.65%
Transit Passengers	159	208	-23.55%	382	678	-43.65%
Total Passengers	1,365,360	900,043	51.69%	3,578,781	2,190,699	63.36%

Private Flights

	Current Month			Accumulated Since the beginning of the year		
	March 2025	March 2024	Rate of Change	2025	2024	Rate of Change
Incoming Aircrafts	300	307	-2.28%	866	779	11.16%
Outgoing Aircrafts	301	309	-2.58%	859	776	10.69%
Total Aircrafts	601	616	-2.43%	1,725	1,555	10.93%
Incoming Passengers	924	918	0.65%	2,734	2,225	22.87%
Outgoing Passengers	776	807	-3.84%	2,184	2,066	5.71%
Total Passengers	1,700	1,725	-1.44%	4,918	4,291	14.61%





Passengers and Aircrafts

Int'l Aviation Activity at Ben Gurion International Airport by Flight Type

Cargo Flights

	Current Month			Accumulated Since the beginning of the year		
	March 2025	March 2024	Rate of Change	2025	2024	Rate of Change
Incoming Aircrafts	446	350	27.42%	1,221	1,002	21.85%
Outgoing Aircrafts	435	323	34.67%	1,183	921	28.44%
Total Aircrafts	881	673	30.90%	2,404	1,923	25.01%
Incoming Passengers	53	9		169	45	
Outgoing Passengers	45	44	2.27%	129	80	61.25%
Total Passengers	98	53	84.90%	298	125	138.40%

Other Flights

	Current Month			Accumulated Since the beginning of the year		
	March 2025	March 2024	Rate of Change	2025	2024	Rate of Change
Incoming Aircrafts	24	45	-46.66%	105	109	-3.66%
Outgoing Aircrafts	31	45	-31.11%	117	111	5.40%
Total Aircrafts	55	90	-38.88%	222	220	0.90%
Incoming Passengers	76	232	-67.24%	587	898	-34.63%
Outgoing Passengers	79	199	-60.30%	565	760	-25.65%
Total Passengers	155	431	-64.03%	1,152	1,658	-30.51%





Passengers and Aircrafts

Domestic Aviation Activity at Ben Gurion International Airport by Flight Type

Schedule Flights

	Current Month			Accumulated Since the beginning of the year		
	March 2025	March 2024	Rate of Change	2025	2024	Rate of Change
Aircrafts	494	426	15.96%	1,393	1,245	11.88%
Passengers	59,896	56,023	6.91%	168,414	160,860	4.69%

Private Flights

	Current Month			Accumulated Since the beginning of the year		
	March 2025	March 2024	Rate of Change	2025	2024	Rate of Change
Aircrafts	17	25	-32.00%	64	85	-24.70%
Passengers	3	19	-84.21%	49	53	-7.54%

Other Flights

	Current Month			Accumulated Since the beginning of the year		
	March 2025	March 2024	Rate of Change	2025	2024	Rate of Change
Aircrafts	67	44	52.27%	130	148	-12.16%
Passengers	275			422		





International Activity

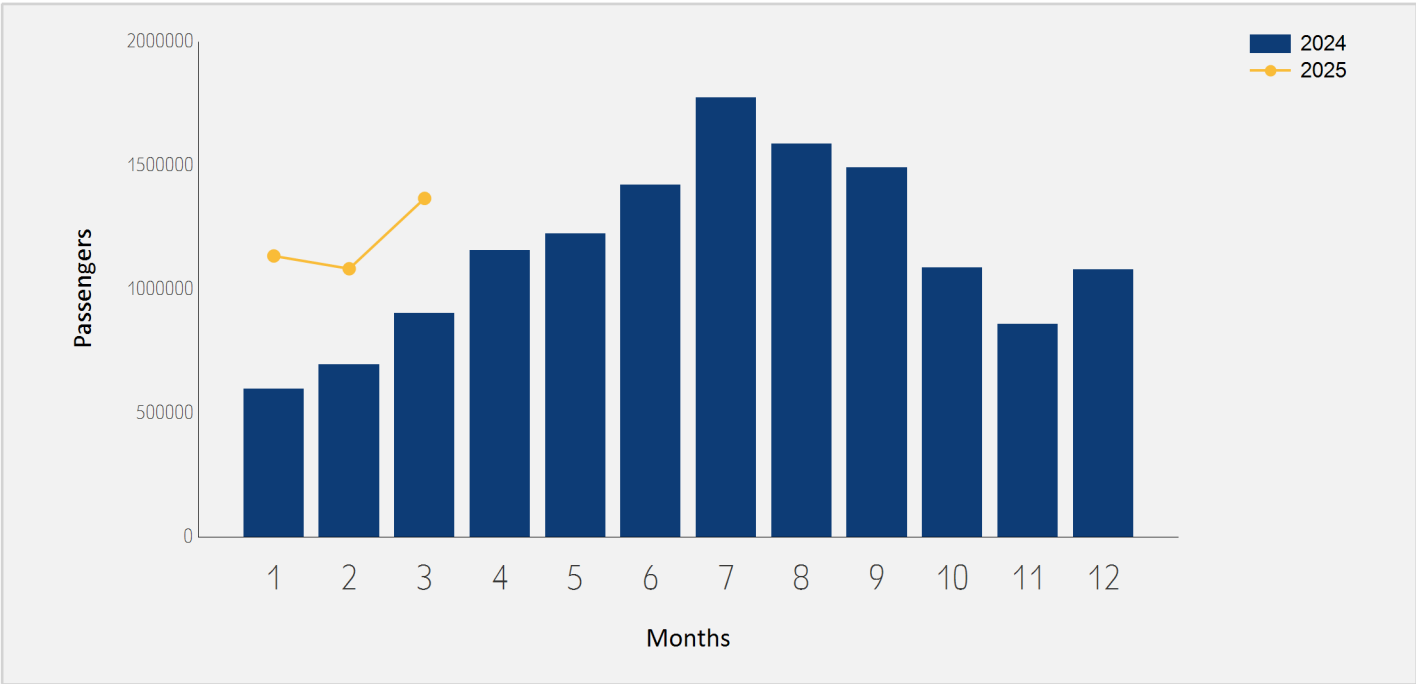




International Passenger Traffic

Distribution by Months

Months	2025	2024	Rate of Change
January	1,134,698	597,840	89.79%
February	1,083,138	696,681	55.47%
March	1,367,313	902,252	51.54%
Total	3,585,149	2,196,773	63.20%

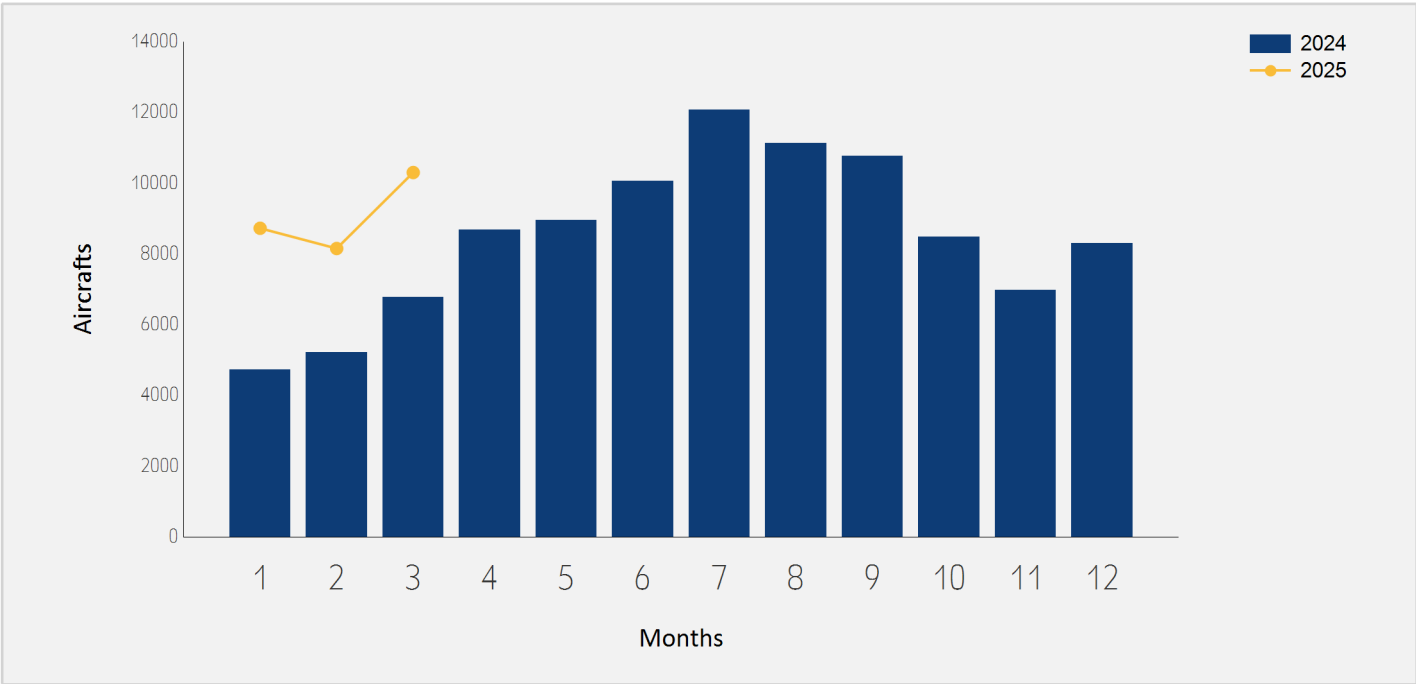




International Aircraft Traffic

Distribution by Months

Months	2025	2024	Rate of Change
January	8,726	4,732	84.40%
February	8,154	5,225	56.05%
March	10,302	6,781	51.92%
Total	27,182	16,738	62.39%





International Passenger Traffic

Distribution by Airline for March

March 2025				March 2024		
Airline		Passengers	Rate of Total	Passengers	Rate of Total	Rate of Change
LY	EL AL ISRAEL AIRLINES	537,223	39.29%	482,763	53.50%	11.28%
6H	ISRAIR AIRLINES	126,265	9.23%	58,432	6.47%	116.08%
W6	WIZZAIR	121,514	8.88%	31,593	3.50%	
IZ	ARKIA ISRAELI AIRLINES	106,253	7.77%	60,822	6.74%	74.69%
FZ	FLYDUBAI	61,454	4.49%	36,058	3.99%	70.43%
LH	LUFTHANSA	42,636	3.11%	14,022	1.55%	
BZ	BLUE BIRD AIRWAYS	39,119	2.86%	29,276	3.24%	33.62%
A3	AEGEAN AIRLINES	29,611	2.16%	18,185	2.01%	62.83%
EY	ETIHAD AIRWAYS	26,258	1.92%	5,245	0.58%	
OS	AUSTRIAN AIRLINES	20,153	1.47%	14,840	1.64%	35.80%
LO	LOT POLISH AIRLINES	19,198	1.40%	11,502	1.27%	66.91%
AZ	ITALIA TRASPORTO AEREO	18,159	1.32%	3,740	0.41%	
AF	AIR FRANCE	17,109	1.25%	12,163	1.34%	40.66%
J2	AZERBAIJAN AIRLINES	15,136	1.10%	1,780	0.19%	
ET	ETHIOPIAN AIRLINES	14,747	1.07%	12,015	1.33%	22.73%
UX	AIR EUROPA	14,463	1.05%	9,130	1.01%	58.41%
QS	SMARTWINGS	12,874	0.94%	10,276	1.13%	25.28%
U8	TUS AIRWAYS	11,196	0.81%	9,516	1.05%	17.65%
TO	TRANSAVIA FRANCE	11,162	0.81%	7,967	0.88%	40.10%
UA	UNITED AIRLINES	10,295	0.75%	15,893	1.76%	-35.22%
LX	SWISS INT'L AIRLINES	9,952	0.72%	11,434	1.26%	-12.96%





International Passenger Traffic

Distribution by Airline for March

March 2025				March 2024		
Airline		Passengers	Rate of Total	Passengers	Rate of Total	Rate of Change
WZ	RED WINGS AIRLINES	9,783	0.71%	8,541	0.94%	14.54%
AI	AIR INDIA	9,470	0.69%	6,234	0.69%	51.90%
LIL	FLY LILI	8,224	0.60%			
SN	BRUSSELS AIRLINES	7,807	0.57%	1,003	0.11%	
A4	AZIMUTH AIRLINES	6,353	0.46%	6,360	0.70%	-0.11%
RO	TAROM - ROMANIAN AIR TRAN	5,355	0.39%	3,382	0.37%	58.33%
H7	HISKY	5,044	0.36%	2,886	0.31%	74.77%
FR	RYANAIR	4,894	0.35%			
EW	EUROWINGS	4,811	0.35%	1,436	0.15%	
4D	FLYYO	3,975	0.29%			
H4	HISKY EUROPE SRL	3,413	0.24%	387	0.04%	
CY	CYPRUS AIRWAYS	3,264	0.23%	2,685	0.29%	21.56%
5F	FLYONE	3,221	0.23%	2,232	0.24%	44.31%
HY	UZBEKISTAN AIR	2,872	0.21%	2,045	0.22%	40.44%
HU	HAINAN AIRLINES	2,494	0.18%	2,115	0.23%	17.91%
HM	AIR SEYCHELLES	2,212	0.16%			
FB	BULGARIA AIR	2,177	0.15%			
I2	IBERIA EXPRESS	753	0.05%			
HH	QANOT SHARQ	685	0.05%			
A9	GEORGIAN AIRWAYS	360	0.02%			
U5	SKYUP MALTA	359	0.02%			





International Passenger Traffic

Distribution by Airline for March

		March 2025		March 2024		
Airline		Passengers	Rate of Total	Passengers	Rate of Total	Rate of Change
AHS	AERO HANDLING	272	0.01%	225	0.02%	20.88%
	OTHERS	14,738	1.07%	6,069	0.67%	142.84%
	TOTAL	1,367,313		902,252		51.54%





Int'l Accumulated Passenger Traffic

Distribution by Airline

		Accumulated 2025		Accumulated 2024		
Airline		Passengers	Rate of Total	Passengers	Rate of Total	Rate of Change
LY	EL AL ISRAEL AIRLINES	1,582,079	44.12%	1,361,951	61.99%	16.16%
6H	ISR AIR AIRLINES	354,775	9.89%	169,892	7.73%	108.82%
IZ	ARKIA ISRAELI AIRLINES	274,621	7.65%	113,600	5.17%	141.74%
W6	WIZZAIR	237,653	6.62%	31,593	1.43%	
FZ	FLYDUBAI	191,527	5.34%	91,414	4.16%	109.51%
BZ	BLUE BIRD AIRWAYS	117,314	3.27%	45,281	2.06%	159.07%
A3	AEGEAN AIRLINES	85,741	2.39%	31,769	1.44%	169.88%
EY	ETIHAD AIRWAYS	76,874	2.14%	14,198	0.64%	
LH	LUFTHANSA	62,197	1.73%	32,312	1.47%	92.48%
LO	LOT POLISH AIRLINES	55,489	1.54%	18,872	0.85%	194.02%
ET	ETHIOPIAN AIRLINES	44,723	1.24%	30,758	1.40%	45.40%
J2	AZERBAIJAN AIRLINES	40,137	1.11%	1,780	0.08%	
UX	AIR EUROPA	38,154	1.06%	10,783	0.49%	
AF	AIR FRANCE	32,290	0.90%	23,228	1.05%	39.01%
QS	SMARTWINGS	29,926	0.83%	15,370	0.69%	94.70%
U8	TUS AIRWAYS	29,767	0.83%	14,434	0.65%	106.22%
AZ	ITALIA TRASPORTO AEREO	29,306	0.81%	3,740	0.17%	
OS	AUSTRIAN AIRLINES	28,310	0.78%	36,629	1.66%	-22.71%
WZ	RED WINGS AIRLINES	26,243	0.73%	16,766	0.76%	56.52%
TO	TRANSAVIA FRANCE	19,786	0.55%	11,910	0.54%	66.12%
LX	SWISS INT'L AIRLINES	18,567	0.51%	25,105	1.14%	-26.04%





Int'l Accumulated Passenger Traffic

Distribution by Airline

		Accumulated 2025		Accumulated 2024		
Airline		Passengers	Rate of Total	Passengers	Rate of Total	Rate of Change
A4	AZIMUTH AIRLINES	18,014	0.50%	17,769	0.80%	1.37%
LIL	FLY LILI	14,612	0.40%			
H7	HISKY	13,870	0.38%	8,323	0.37%	66.64%
H4	HISKY EUROPE SRL	13,365	0.37%	387	0.01%	
RO	TAROM - ROMANIAN AIR TRAN	12,634	0.35%	5,638	0.25%	124.08%
A9	GEORGIAN AIRWAYS	12,165	0.33%			
SN	BRUSSELS AIRLINES	12,008	0.33%	1,003	0.04%	
UA	UNITED AIRLINES	10,295	0.28%	15,893	0.72%	-35.22%
5F	FLYONE	9,975	0.27%	2,748	0.12%	
AI	AIR INDIA	9,470	0.26%	6,234	0.28%	51.90%
CY	CYPRUS AIRWAYS	9,129	0.25%	2,685	0.12%	
EW	EUROWINGS	8,533	0.23%	1,436	0.06%	
HY	UZBEKISTAN AIR	8,238	0.22%	6,434	0.29%	28.03%
HM	AIR SEYCHELLES	6,491	0.18%			
FB	BULGARIA AIR	6,470	0.18%			
HU	HAINAN AIRLINES	5,819	0.16%	5,004	0.22%	16.28%
4D	FLYYO	4,961	0.13%			
FR	RYANAIR	4,894	0.13%	11,552	0.52%	-57.63%
HH	QANOT SHARQ	2,180	0.06%			
	OTHERS	26,547	0.74%	10,282	0.46%	158.18%
	TOTAL	3,585,149		2,196,773		63.20%





International Passenger Traffic

Distribution by Israeli Airlines for March

March 2025				March 2024		
Airlines		Passengers	Rate of Total	Passengers	Rate of Total	Rate of Change
LY	EL AL ISRAEL AIRLINES	537,223	39.29%	482,763	53.50%	11.28%
6H	ISRAIR AIRLINES	126,265	9.23%	58,432	6.47%	116.08%
IZ	ARKIA ISRAELI AIRLINES	106,253	7.77%	60,822	6.74%	74.69%
	OTHERS	12,787	0.93%	549	0.06%	
TOTAL		782,528	57.23%	602,566	66.78%	29.86%

Int'l Accumulated Passenger Traffic

Distribution by Israeli Airlines

Accumulated 2025				Accumulated 2024		
Airlines		Passengers	Rate of Total	Passengers	Rate of Total	Rate of Change
LY	EL AL ISRAEL AIRLINES	1,582,079	44.12%	1,361,951	61.99%	16.16%
6H	ISRAIR AIRLINES	354,775	9.89%	169,892	7.73%	108.82%
IZ	ARKIA ISRAELI AIRLINES	274,621	7.65%	113,600	5.17%	141.74%
	OTHERS	18,449	0.51%	1,401	0.06%	
TOTAL		2,229,924	62.19%	1,646,844	74.96%	35.40%





International Passenger Traffic

Distribution by Countries for March

Countries	March 2025		March 2024		
	Passengers	Rate of Total	Passengers	Total of Rate	Rate of Change
UNITED ARAB EMIRATES	131,052	9.58%	55,657	6.16%	135.46%
UNITED STATES	109,867	8.03%	110,451	12.24%	-0.52%
ITALY	108,145	7.90%	52,449	5.81%	106.19%
GREECE	99,981	7.31%	67,607	7.49%	47.88%
FRANCE	95,646	6.99%	72,019	7.98%	32.80%
GERMANY	85,826	6.27%	46,795	5.18%	83.40%
GEORGIA	65,059	4.75%	40,318	4.46%	61.36%
HUNGARY	64,619	4.72%	31,445	3.48%	105.49%
POLAND	62,819	4.59%	30,702	3.40%	104.60%
CYPRUS	57,776	4.22%	38,946	4.31%	48.34%
SPAIN	57,283	4.18%	42,602	4.72%	34.46%
UNITED KINGDOM	56,826	4.15%	39,654	4.39%	43.30%
BULGARIA	42,712	3.12%	24,742	2.74%	72.62%
AUSTRIA	42,469	3.10%	24,648	2.73%	72.30%
ROMANIA	41,668	3.04%	25,449	2.82%	63.73%
CZECH REPUBLIC	38,286	2.80%	33,808	3.74%	13.24%
THAILAND	36,329	2.65%	28,392	3.14%	27.95%
SWITZERLAND	31,799	2.32%	33,863	3.75%	-6.09%
NETHERLANDS	18,840	1.37%	20,867	2.31%	-9.71%
RUSSIAN FEDERATION	16,201	1.18%	22,495	2.49%	-27.97%
AZERBAIJAN	15,176	1.10%	1,863	0.20%	
ETHIOPIA	14,373	1.05%	12,015	1.33%	19.62%





International Passenger Traffic

Distribution by Countries for March

Countries	March 2025		March 2024		
	Passengers	Rate of Total	Passengers	Total of Rate	Rate of Change
MOLDOVA	14,131	1.03%	11,414	1.26%	23.80%
INDIA	9,472	0.69%	6,234	0.69%	51.94%
BELGIUM	7,864	0.57%	1,042	0.11%	
PORTUGAL	7,466	0.54%	7,019	0.77%	6.36%
JAPAN	6,193	0.45%	4,742	0.52%	30.59%
FINLAND	5,777	0.42%	3,243	0.35%	78.13%
SERBIA	4,066	0.29%	2,676	0.29%	51.94%
LITHUANIA	3,876	0.28%	1,035	0.11%	
UZBEKISTAN	3,557	0.26%	2,045	0.22%	73.93%
MONTENEGRO	3,310	0.24%	7		
CHINA	2,522	0.18%	2,123	0.23%	18.79%
SEYCHELLES	2,350	0.17%	647	0.07%	
MALTA	1,632	0.11%	4		
TANZANIA	1,351	0.09%			
CROATIA	350	0.02%	8		
ALBANIA	216	0.01%	10		
OTHERS	428	0.03%	3,216	0.35%	-86.69%
TOTAL	1,367,313		902,252		51.54%





Int'l Accumulated Passenger Traffic

Distribution by Countries

Countries	Accumulated 2025		Accumulated 2024		
	Passengers	Rate of Total	Passengers	Rate of Total	Rate of Change
UNITED ARAB EMIRATES	400,914	11.18%	149,418	6.80%	168.31%
UNITED STATES	300,732	8.38%	307,519	13.99%	-2.20%
GREECE	285,276	7.95%	154,359	7.02%	84.81%
ITALY	267,932	7.47%	110,501	5.03%	142.47%
FRANCE	236,543	6.59%	160,763	7.31%	47.13%
GERMANY	186,716	5.20%	123,563	5.62%	51.10%
GEORGIA	184,407	5.14%	104,767	4.76%	76.01%
UNITED KINGDOM	164,191	4.57%	110,421	5.02%	48.69%
HUNGARY	153,412	4.27%	69,847	3.17%	119.64%
CYPRUS	153,031	4.26%	99,175	4.51%	54.30%
POLAND	150,845	4.20%	59,668	2.71%	152.80%
SPAIN	149,479	4.16%	90,048	4.09%	65.99%
BULGARIA	111,816	3.11%	50,418	2.29%	121.77%
ROMANIA	108,275	3.02%	61,280	2.78%	76.68%
CZECH REPUBLIC	105,881	2.95%	70,500	3.20%	50.18%
THAILAND	104,362	2.91%	84,703	3.85%	23.20%
AUSTRIA	92,638	2.58%	68,362	3.11%	35.51%
SWITZERLAND	82,158	2.29%	81,514	3.71%	0.79%
NETHERLANDS	51,502	1.43%	53,975	2.45%	-4.58%
RUSSIAN FEDERATION	44,403	1.23%	59,673	2.71%	-25.58%
ETHIOPIA	44,203	1.23%	30,758	1.40%	43.71%
AZERBAIJAN	40,187	1.12%	2,094	0.09%	





Int'l Accumulated Passenger Traffic

Distribution by Countries

Countries	Accumulated 2025		Accumulated 2024		
	Passengers	Rate of Total	Passengers	Rate of Total	Rate of Change
MOLDOVA	37,845	1.05%	30,794	1.40%	22.89%
PORTUGAL	22,710	0.63%	17,915	0.81%	26.76%
JAPAN	13,458	0.37%	4,742	0.21%	183.80%
BELGIUM	12,182	0.33%	1,228	0.05%	
SERBIA	11,940	0.33%	4,365	0.19%	173.53%
FINLAND	10,598	0.29%	4,929	0.22%	115.01%
UZBEKISTAN	10,418	0.29%	6,434	0.29%	61.92%
INDIA	9,752	0.27%	6,238	0.28%	56.33%
LITHUANIA	9,356	0.26%	1,222	0.05%	
MONTENEGRO	8,392	0.23%	8		
SEYCHELLES	6,641	0.18%	1,395	0.06%	
CHINA	5,903	0.16%	5,022	0.22%	17.54%
OTHERS	7,051	0.19%	9,155	0.41%	-22.98%
TOTAL	3,585,149		2,196,773		63.20%





International Passenger Traffic

Distribution by First Destination for March

Destination	March 2025		March 2024		
	Passengers	Rate of Total	Passengers	Rate of Total	Rate of Change
DUBAI	100,274	7.33%	50,115	5.55%	100.08%
ATHENS	94,274	6.89%	65,757	7.28%	43.36%
BUDAPEST	64,503	4.71%	31,445	3.48%	105.12%
ROME - FIUMICINO	62,027	4.53%	27,769	3.07%	123.36%
PARIS-CHARLES DE GAULLE	61,228	4.47%	52,323	5.79%	17.01%
LARNACA	55,720	4.07%	38,726	4.29%	43.88%
NEW YORK - J.F.KENNEDY	41,599	3.04%	38,243	4.23%	8.77%
BUCHAREST - OTOPENI	40,600	2.96%	25,438	2.81%	59.60%
VIENNA	39,956	2.92%	23,686	2.62%	68.69%
SOFIA	39,251	2.87%	21,930	2.43%	78.98%
WARSAW	38,360	2.80%	19,508	2.16%	96.63%
PRAGUE-RUZYNE	38,286	2.80%	33,807	3.74%	13.24%
TBILISI	38,059	2.78%	22,847	2.53%	66.58%
MILAN-MALPENSA	36,697	2.68%	21,048	2.33%	74.34%
NEW YORK - NEWARK	35,456	2.59%	41,762	4.62%	-15.09%
LUTON	32,746	2.39%	14,204	1.57%	130.54%
MADRID	32,362	2.36%	22,672	2.51%	42.73%
MUNICH	31,312	2.29%	15,957	1.76%	96.22%
FRANKFURT	30,785	2.25%	17,156	1.90%	79.44%
ABU DHABI	30,619	2.23%	5,421	0.60%	
BANGKOK INTL.-SUARNABHUM	28,997	2.12%	23,712	2.62%	22.28%
BATUMI	27,000	1.97%	17,471	1.93%	54.54%





International Passenger Traffic

Distribution by First Destination for March

Destination	March 2025		March 2024		
	Passengers	Rate of Total	Passengers	Rate of Total	Rate of Change
LONDON - HEATHROW	24,030	1.75%	25,377	2.81%	-5.30%
BARCELONA	23,353	1.70%	19,911	2.20%	17.28%
ZURICH	22,942	1.67%	23,647	2.62%	-2.98%
AMSTERDAM	18,839	1.37%	20,856	2.31%	-9.67%
BERLIN BRANDENBURG INTL	18,511	1.35%	12,238	1.35%	51.25%
BAKU HEYDAR ALIYEV INT'L	15,176	1.10%	1,863	0.20%	
GRENOBLE-SAUNT GEOIRS	14,505	1.06%	10,378	1.15%	39.76%
ADDIS ABABA	14,373	1.05%	12,015	1.33%	19.62%
CHISINAU	14,131	1.03%	11,414	1.26%	23.80%
LOS ANGELES	13,800	1.00%	11,383	1.26%	21.23%
KRAKOW	13,461	0.98%	7,446	0.82%	80.78%
PARIS-ORLY	11,162	0.81%	7,967	0.88%	40.10%
DELHI	9,470	0.69%	6,234	0.69%	51.90%
MIAMI INTERNATIONAL	8,848	0.64%	13,256	1.46%	-33.25%
GENEVA	8,808	0.64%	9,928	1.10%	-11.28%
BRUSSELS	7,822	0.57%	1,003	0.11%	
LYON - SATOLAS	7,674	0.56%	636	0.07%	
SOCHI	7,523	0.55%	9,550	1.05%	-21.22%
PHUKET	7,332	0.53%	4,680	0.51%	56.66%
LISBON	7,288	0.53%	7,019	0.77%	3.83%
TOKYO INTL.-NARITA	6,189	0.45%	4,742	0.52%	30.51%
BOSTON-LOGAN INT	5,876	0.42%	5,762	0.63%	1.97%





International Passenger Traffic

Distribution by First Destination for March

Destination	March 2025		March 2024		
	Passengers	Rate of Total	Passengers	Rate of Total	Rate of Change
ROVANIEMI	5,765	0.42%	3,238	0.35%	78.04%
KATOWICE	5,078	0.37%	268	0.02%	
THESSALONIKI	4,899	0.35%	1,772	0.19%	176.46%
MOSCOW-ZHUKOVSKY INTL AIR	4,695	0.34%	223	0.02%	
VENICE	4,292	0.31%	255	0.02%	
FORT LAUDERDALE	4,151	0.30%			
BELGRADE	4,066	0.29%	2,676	0.29%	51.94%
MOSCOW-DOMODEDOVO	3,918	0.28%	12,036	1.33%	-67.44%
VILNIUS INTL	3,876	0.28%	1,035	0.11%	
DUSSELDORF	3,274	0.23%	1,436	0.15%	127.99%
RZESZOW-JASIONKA	3,158	0.23%	3,480	0.38%	-9.25%
TASHKENT	2,872	0.21%	2,045	0.22%	40.44%
VILAFRANCA-VERONA	2,824	0.20%	2,735	0.30%	3.25%
SHENZHEN BAOAN INT.	2,494	0.18%	2,115	0.23%	17.91%
PODGORICA	2,453	0.17%	6		
VARNA	2,360	0.17%	2,812	0.31%	-16.07%
MAHE SEYCHELLES INTL	2,350	0.17%	647	0.07%	
WARSAW- MODLIN	2,218	0.16%			
PAPHOS	2,056	0.15%	214	0.02%	
MALTA	1,632	0.11%	4		
HAMBURG	1,545	0.11%			
BERGAMO	1,478	0.10%	269	0.02%	





International Passenger Traffic

Distribution by First Destination for March

Destination	March 2025		March 2024		
	Passengers	Rate of Total	Passengers	Rate of Total	Rate of Change
SALZBURG	1,302	0.09%	4		
INNSBRUCK	1,211	0.08%	958	0.10%	26.40%
ZANZIBAR	1,115	0.08%			
PLOVDIV	1,101	0.08%			
TENERIFE-NORTE LOS RODEOS	1,042	0.07%			
TIVAT	857	0.06%	1		
IASI	813	0.05%			
SAMARKAND	685	0.05%			
NICE	496	0.03%	260	0.02%	90.76%
MARSEILLE	435	0.03%	299	0.03%	45.48%
LAS PALMAS	405	0.02%	2		
HERAKLION	398	0.02%			
RHODES-PARADISI	366	0.02%	51		
WROCLAW	355	0.02%			
BADEN BADEN	350	0.02%			
ZAGREB	348	0.02%	6		
BOLOGNA-BORGO PANIGALE	256	0.01%			
SUCEAVA-ROMANIA	255	0.01%			
NAPLES-CAPODICHINO	252	0.01%			
TURIN	245	0.01%			
KILIMANJARO	236	0.01%			
TIRANA	216	0.01%	10		





International Passenger Traffic

Distribution by First Destination for March

Destination	March 2025		March 2024		
	Passengers	Rate of Total	Passengers	Rate of Total	Rate of Change
OTHERS	1,896	0.13%	5,093	0.56%	-62.77%
TOTAL	1,367,313		902,252		51.54%





Int'l Accumulated Passenger Traffic

Distribution by First Destination

Destination	Accumulated 2025		Accumulated 2024		
	Passengers	Rate of Total	Passengers	Rate of Total	Rate of Change
DUBAI	315,442	8.79%	134,711	6.13%	134.16%
ATHENS	274,245	7.64%	152,475	6.94%	79.86%
PARIS-CHARLES DE GAULLE	169,320	4.72%	131,384	5.98%	28.87%
ROME - FIUMICINO	156,281	4.35%	52,513	2.39%	197.60%
BUDAPEST	153,296	4.27%	69,847	3.17%	119.47%
LARNACA	147,727	4.12%	98,785	4.49%	49.54%
NEW YORK - J.F.KENNEDY	113,825	3.17%	119,214	5.42%	-4.52%
TBILISI	110,595	3.08%	60,222	2.74%	83.64%
BUCHAREST - OTOPENI	106,795	2.97%	61,261	2.78%	74.32%
PRAGUE-RUZYNE	105,873	2.95%	70,471	3.20%	50.23%
WARSAW	103,071	2.87%	41,304	1.88%	149.54%
SOFIA	101,762	2.83%	42,287	1.92%	140.64%
LUTON	90,459	2.52%	29,530	1.34%	
MILAN-MALPENSA	89,666	2.50%	50,667	2.30%	76.97%
NEW YORK - NEWARK	87,882	2.45%	97,570	4.44%	-9.92%
ABU DHABI	85,071	2.37%	14,394	0.65%	
VIENNA	84,646	2.36%	65,634	2.98%	28.96%
BANGKOK INTL.-SUARNABHUM	83,513	2.32%	73,667	3.35%	13.36%
MADRID	83,039	2.31%	47,622	2.16%	74.37%
BATUMI	73,205	2.04%	44,240	2.01%	65.47%
LONDON - HEATHROW	72,912	2.03%	80,678	3.67%	-9.62%
BARCELONA	64,595	1.80%	42,182	1.92%	53.13%





Int'l Accumulated Passenger Traffic

Distribution by First Destination

Destination	Accumulated 2025		Accumulated 2024		
	Passengers	Rate of Total	Passengers	Rate of Total	Rate of Change
MUNICH	61,639	1.71%	35,701	1.62%	72.65%
FRANKFURT	60,555	1.68%	47,989	2.18%	26.18%
ZURICH	56,119	1.56%	56,379	2.56%	-0.46%
BERLIN BRANDENBURG INTL	55,411	1.54%	34,303	1.56%	61.53%
AMSTERDAM	51,501	1.43%	53,950	2.45%	-4.53%
ADDIS ABABA	44,203	1.23%	30,758	1.40%	43.71%
LOS ANGELES	40,956	1.14%	33,958	1.54%	20.60%
BAKU HEYDAR ALIYEV INT'L	40,187	1.12%	2,094	0.09%	
CHISINAU	37,845	1.05%	30,794	1.40%	22.89%
KRAKOW	33,714	0.94%	13,529	0.61%	149.19%
GRENOBLE-SAUNT GEOIRS	29,734	0.82%	13,858	0.63%	114.56%
MIAMI INTERNATIONAL	27,280	0.76%	38,970	1.77%	-29.99%
GENEVA	25,921	0.72%	24,809	1.12%	4.48%
LISBON	22,506	0.62%	17,908	0.81%	25.67%
SOCHI	21,140	0.58%	26,849	1.22%	-21.26%
PHUKET	20,822	0.58%	11,031	0.50%	88.75%
PARIS-ORLY	19,786	0.55%	12,071	0.54%	63.91%
BOSTON-LOGAN INT	17,856	0.49%	17,100	0.77%	4.42%
LYON - SATOLAS	16,407	0.45%	636	0.02%	
TOKYO INTL.-NARITA	13,454	0.37%	4,742	0.21%	183.71%
MOSCOW-ZHUKOVSKY INTL AIR	13,227	0.36%	223	0.01%	
BRUSSELS	12,043	0.33%	1,126	0.05%	





Int'l Accumulated Passenger Traffic

Distribution by First Destination

Destination	Accumulated 2025		Accumulated 2024		
	Passengers	Rate of Total	Passengers	Rate of Total	Rate of Change
FORT LAUDERDALE	12,005	0.33%	1		
BELGRADE	11,940	0.33%	4,365	0.19%	173.53%
VENICE	11,186	0.31%	255	0.01%	
ROVANIEMI	10,586	0.29%	4,924	0.22%	114.98%
THESSALONIKI	10,180	0.28%	1,772	0.08%	
MOSCOW-DOMODEDOVO	9,890	0.27%	31,906	1.45%	-69.00%
DELHI	9,729	0.27%	6,234	0.28%	56.06%
VILNIUS INTL	9,356	0.26%	1,046	0.04%	
TASHKENT	8,386	0.23%	6,434	0.29%	30.33%
KATOWICE	7,964	0.22%	621	0.02%	
PODGORICA	7,535	0.21%	6		
MAHE SEYCHELLES INTL	6,641	0.18%	1,395	0.06%	
VARNA	6,603	0.18%	8,131	0.37%	-18.79%
VILLAFRANCA-VERONA	6,025	0.16%	2,735	0.12%	120.29%
SHENZHEN BAOAN INT.	5,819	0.16%	5,004	0.22%	16.28%
DUSSELDORF	5,698	0.15%	1,436	0.06%	
PAPHOS	5,297	0.14%	284	0.01%	
SALZBURG	4,000	0.11%	25		
INNSBRUCK	3,992	0.11%	2,703	0.12%	47.68%
BERGAMO	3,752	0.10%	3,818	0.17%	-1.72%
PLOVDIV	3,451	0.09%			
RZESZOW-JASIONKA	3,158	0.08%	4,214	0.19%	-25.05%





Int'l Accumulated Passenger Traffic

Distribution by First Destination

Destination	Accumulated 2025		Accumulated 2024		
	Passengers	Rate of Total	Passengers	Rate of Total	Rate of Change
HAMBURG	2,848	0.07%			
WARSAW- MODLIN	2,389	0.06%			
SAMARKAND	2,032	0.05%			
OTHERS	19,161	0.53%	20,028	0.91%	-4.32%
TOTAL	3,585,149		2,196,773		63.20%





Cargo Activity





Cargo Handling

Distribution by Transporter

Transporter	March 2025 (Ton)	March 2024 (Ton)	Rate of Change
Cargo on Passenger Aircrafts - Incoming	4,129	3,982	3.69%
Cargo on Passenger Aircrafts - Outgoing	4,369	4,313	1.29%
Total Cargo on Passenger Aircrafts	8,498	8,295	2.44%
Cargo on Cargo Aircrafts - Incoming	18,520	14,918	24.14%
Cargo on Cargo Aircrafts - Outgoing	7,858	7,078	11.02%
Total Cargo on Cargo Aircrafts	26,378	21,996	19.92%
Total	34,876	30,291	15.13%

Distribution by Months

Month	2025 (ton)			2024 (ton)			Rate of Change
	Cargo	Mail	Total	Cargo	Mail	Total	
January	28,679	373	29,052	26,619	580	27,200	6.80%
February	28,020	338	28,358	26,737	441	27,178	4.34%
March	34,445	432	34,876	29,890	402	30,291	15.13%
Total	91,144	1,143	92,286	83,246	1,423	84,669	8.99%





Cargo Handling on Passenger Aircrafts

Distribution by Airline for March

March 2025					March 2024				
Airline	Incoming Cargo (Ton)	Outgoing Cargo (Ton)	Cargo (Ton)	Rate of Total	Incoming Cargo (Ton)	Outgoing Cargo (Ton)	Cargo (Ton)	Rate of Total	Rate of Change
LY EL AL ISRAEL AIRLINES	2,170	3,168	5,337	62.80%	2,658	3,440	6,099	73.52%	-12.49%
AF AIR FRANCE	310	324	634	7.46%	133	122	255	3.07%	148.62%
HU HAINAN AIRLINES	322	125	447	5.26%	188	123	311	3.74%	43.72%
UX AIR EUROPA	271	154	425	5.00%	242	148	390	4.70%	8.97%
UA UNITED AIRLINES	189	145	335	3.94%	294	227	521	6.28%	-35.70%
FZ FLYDUBAI	145	30	176	2.07%	123	23	146	1.76%	20.54%
IZ ARKIA ISRAELI AIRLINES	70	47	116	1.36%	1	1	2	0.02%	
AI AIR INDIA	41	68	109	1.28%	81	97	178	2.14%	-38.76%
J2 AZERBAIJAN AIRLINES	69	35	104	1.22%		2	2	0.02%	
EY ETIHAD AIRWAYS	70	24	94	1.10%	19	10	29	0.34%	
HY UZBEKISTAN AIR	35	51	87	1.02%	3	15	18	0.21%	
5Y ATLAS AIR Inc.		79	79	0.92%					
AZ ITALIA TRASPORTO AEREO	54	12	66	0.77%	5	7	12	0.14%	
LH LUFTHANSA	39	20	59	0.69%	16	6	21	0.25%	180.95%
A3 AEGEAN AIRLINES	42	10	53	0.62%	46	7	53	0.63%	
LO LOT POLISH AIRLINES	48	4	52	0.61%	29	12	41	0.49%	26.82%
OS AUSTRIAN AIRLINES	32	13	45	0.52%	21	2	23	0.27%	95.65%
RO TAROM - ROMANIAN AIR TRAN	35	5	39	0.45%	10	3	12	0.14%	
ET ETHIOPIAN AIRLINES	34	5	39	0.45%	17	5	22	0.26%	77.27%
H4 HISKY EUROPE SRL	27	3	31	0.36%					
WZ RED WINGS AIRLINES	12	9	21	0.24%	1	7	9	0.10%	133.33%
6H ISRAIR AIRLINES	18	2	20	0.23%		5	5	0.06%	





Cargo Handling on Passenger Aircrafts

Distribution by Airline for March

March 2025					March 2024				
Airline	Incoming Cargo (Ton)	Outgoing Cargo (Ton)	Cargo (Ton)	Rate of Total	Incoming Cargo (Ton)	Outgoing Cargo (Ton)	Cargo (Ton)	Rate of Total	Rate of Change
FX FEDERAL EXPRESS	20		20	0.23%					
QS SMARTWINGS	15	2	16	0.18%	18	1	19	0.22%	-15.78%
LX SWISS INT'L AIRLINES	3	10	13	0.15%	32	33	65	0.78%	-80.00%
5F FLYONE	7	6	13	0.15%	3		3	0.03%	
H7 HISKY	8	5	13	0.15%	6	4	10	0.12%	30.00%
U8 TUS AIRWAYS	9	2	12	0.14%	11	1	12	0.14%	
HM AIR SEYCHELLES	8		8	0.09%					
A4 AZIMUTH AIRLINES	4	3	7	0.08%	16	2	17	0.20%	-58.82%
SN BRUSSELS AIRLINES	6	1	7	0.08%					
RD EASY CHARTER LLC		5	5	0.05%					
HH QANOT SHARQ	4		4	0.04%					
CY CYPRUS AIRWAYS	4		4	0.04%	3		3	0.03%	33.33%
FB BULGARIA AIR	3		3	0.03%					
C6 CENTRUM AIR		2	2	0.02%		3	3	0.03%	-33.33%
I2 IBERIA EXPRESS	1	1	2	0.02%					
W6 WIZZAIR	1		1	0.01%					
TOTAL	4,129	4,369	8,498		3,982	4,313	8,295		2.44%





Accumulated Cargo Handling on Passengers Aircrafts

Distribution by Airline

Accumulated 2025					Accumulated 2024					
Airline		Incoming Cargo (Ton)	Outgoing Cargo (Ton)	Cargo (Ton)	Rate of Total	Incoming Cargo (Ton)	Outgoing Cargo (Ton)	Cargo (Ton)	Rate of Total	Rate of Change
LY	EL AL ISRAEL AIRLINES	6,578	9,128	15,706	69.21%	7,744	9,827	17,570	81.37%	-10.60%
UX	AIR EUROPA	882	411	1,293	5.69%	271	167	438	2.02%	195.20%
HU	HAINAN AIRLINES	884	328	1,211	5.33%	538	329	867	4.01%	39.67%
AF	AIR FRANCE	559	594	1,153	5.08%	358	330	688	3.18%	67.58%
FZ	FLYDUBAI	386	151	538	2.37%	285	62	347	1.60%	55.04%
UA	UNITED AIRLINES	189	145	335	1.47%	294	227	521	2.41%	-35.70%
IZ	ARKIA ISRAELI AIRLINES	155	90	245	1.07%	1	1	2		
HY	UZBEKISTAN AIR	86	134	220	0.96%	52	63	115	0.53%	91.30%
EY	ETIHAD AIRWAYS	139	58	197	0.86%	38	26	64	0.29%	
J2	AZERBAIJAN AIRLINES	116	67	182	0.80%		2	2		
A3	AEGEAN AIRLINES	120	30	149	0.65%	81	17	98	0.45%	52.04%
5Y	ATLAS AIR Inc.		140	140	0.61%					
LO	LOT POLISH AIRLINES	102	15	117	0.51%	46	16	62	0.28%	88.70%
ET	ETHIOPIAN AIRLINES	100	17	117	0.51%	31	12	43	0.19%	172.09%
AI	AIR INDIA	41	68	109	0.48%	81	97	178	0.82%	-38.76%
AZ	ITALIA TRASPORTO AEREO	83	25	108	0.47%	5	7	12	0.05%	
LH	LUFTHANSA	69	31	100	0.44%	40	22	62	0.28%	61.29%
RO	TAROM - ROMANIAN AIR TRAN	73	13	86	0.37%	17	7	25	0.11%	
H4	HISKY EUROPE SRL	75	5	80	0.35%					
QS	SMARTWINGS	70	9	79	0.34%	24	3	27	0.12%	192.59%
OS	AUSTRIAN AIRLINES	42	19	61	0.26%	70	3	72	0.33%	-15.27%
WZ	RED WINGS AIRLINES	35	23	57	0.25%	12	10	22	0.10%	159.09%





Accumulated Cargo Handling on Passengers Aircrafts

Distribution by Airline

Accumulated 2025					Accumulated 2024				
Airline	Incoming Cargo (Ton)	Outgoing Cargo (Ton)	Cargo (Ton)	Rate of Total	Incoming Cargo (Ton)	Outgoing Cargo (Ton)	Cargo (Ton)	Rate of Total	Rate of Change
NC R NATIONAL AIRLINES	54		54	0.23%		83	83	0.38%	-34.93%
RD EASY CHARTER LLC	41	5	46	0.20%					
C6 CENTRUM AIR		41	41	0.18%		3	3	0.01%	
H7 HISKY	26	12	38	0.16%	28	13	41	0.18%	-7.31%
5F FLYONE	17	17	34	0.14%	3		4	0.01%	
6H ISRAIR AIRLINES	26	4	30	0.13%		15	15	0.06%	100.00%
A4 AZIMUTH AIRLINES	18	12	30	0.13%	37	8	45	0.20%	-33.33%
U8 TUS AIRWAYS	23	4	26	0.11%	23	3	27	0.12%	-3.70%
HM AIR SEYCHELLES	24		24	0.10%					
LX SWISS INT'L AIRLINES	4	20	23	0.10%	66	55	122	0.56%	-81.14%
FX FEDERAL EXPRESS	20		20	0.08%					
SN BRUSSELS AIRLINES	8	1	9	0.03%					
FB BULGARIA AIR	8		8	0.03%					
HH QANOT SHARQ	7		7	0.03%					
CY CYPRUS AIRWAYS	6	1	7	0.03%	3		3	0.01%	133.33%
GH GEORGIAN AIRLINES		5	5	0.02%					
I2 IBERIA EXPRESS	1	1	2						
W6 WIZZAIR	2		2						
MJ MYWAY AIRLINES	1	1	2			6	6	0.02%	-66.66%
BZ BLUE BIRD AIRWAYS	1		1						
TOTAL	11,067	11,625	22,692		10,157	11,434	21,591		5.09%





Cargo Handling on Cargo Aircrafts

Distribution by Airlines March

March 2025					March 2024					
Airline		Incoming Cargo (Ton)	Outgoing Cargo (Ton)	Cargo (Ton)	Rate of Total	Incoming Cargo (Ton)	Outgoing Cargo (Ton)	Cargo (Ton)	Rate of Total	Rate of Change
ICL	C.A.L ISRAELI CARGO	7,598	2,881	10,479	39.72%	5,165	2,081	7,246	32.94%	44.61%
QY	EUROPEAN AIR TRANSPORT	2,078	1,436	3,514	13.32%	1,546	1,429	2,975	13.52%	18.11%
LY	EL AL ISRAEL AIRLINES	1,558	902	2,460	9.32%	1,284	909	2,194	9.97%	12.12%
AZG	SILK WAY WEST AIRLINES	1,393	767	2,160	8.18%	1,243	856	2,099	9.54%	2.90%
C6	CENTRUM AIR	1,893	141	2,035	7.71%	105	3	109	0.49%	
LH	LUFTHANSA	836	488	1,324	5.01%	575	506	1,082	4.91%	22.36%
5Y	ATLAS AIR Inc.	1,013	10	1,023	3.87%					
3V	ASL AIRLINES BELGIUM	440	299	740	2.80%	682	314	997	4.53%	-25.77%
WT	SWIFT AIR	346	312	657	2.49%					
FX	FEDERAL EXPRESS	404	184	588	2.22%	17	10	27	0.12%	
ABR	ASL Airlines (Ireland) Li	359	215	574	2.17%	362	269	631	2.86%	-9.03%
ET	ETHIOPIAN AIRLINES	164	60	224	0.84%	171	77	249	1.13%	-10.04%
NCR	NATIONAL AIRLINES	109	74	183	0.69%	884		884	4.01%	-79.29%
RD	EASY CHARTER LLC	139	10	148	0.56%	813	226	1,040	4.72%	-85.76%
M4	POSTE AIR CARGO	76	20	96	0.36%	104	72	176	0.80%	-45.45%
HY	UZBEKISTAN AIR	51	2	52	0.19%	96		96	0.43%	-45.83%
8V	ASTRAL AVIATION	37		37	0.14%	38		38	0.17%	-2.63%
AZQ	SILK WAY AIRLINES		29	29	0.10%					
CGF	CARGOAIR	17	12	29	0.10%					
	OTHERS	11	16	27	0.10%	1,831	324	2,154	9.79%	-98.74%
TOTAL		18,520	7,858	26,378		14,918	7,078	21,996		19.92%





Accumulated Cargo Handling on Cargo Aircrafts

Distribution by Airline

Accumulated 2025					Accumulated 2024					
Airline		Incoming Cargo (Ton)	Outgoing Cargo (Ton)	Cargo (Ton)	Rate of Total	Incoming Cargo (Ton)	Outgoing Cargo (Ton)	Cargo (Ton)	Rate of Total	Rate of Change
ICL	C.A.L ISRAELI CARGO	19,902	7,234	27,136	38.99%	15,078	5,088	20,166	31.96%	34.56%
QY	EUROPEAN AIR TRANSPORT	5,170	3,924	9,094	13.06%	4,148	3,965	8,113	12.86%	12.09%
LY	EL AL ISRAEL AIRLINES	4,066	3,003	7,069	10.15%	4,079	2,873	6,952	11.02%	1.68%
C6	CENTRUM AIR	6,203	406	6,608	9.49%	105	3	109	0.17%	
AZG	SILK WAY WEST AIRLINES	3,992	1,953	5,945	8.54%	4,404	2,530	6,934	10.99%	-14.26%
LH	LUFTHANSA	1,423	1,021	2,444	3.51%	1,495	1,536	3,032	4.80%	-19.39%
WT	SWIFT AIR	1,030	868	1,898	2.72%					
5Y	ATLAS AIR Inc.	1,853	10	1,863	2.67%					
FX	FEDERAL EXPRESS	1,279	514	1,793	2.57%	17	10	27	0.04%	
ABR	ASL Airlines (Ireland) Li	1,009	605	1,614	2.31%	1,026	811	1,837	2.91%	-12.13%
3V	ASL AIRLINES BELGIUM	613	442	1,055	1.51%	1,554	525	2,079	3.29%	-49.25%
NCR	NATIONAL AIRLINES	481	418	899	1.29%	3,034	7	3,041	4.82%	-70.43%
ET	ETHIOPIAN AIRLINES	517	257	775	1.11%	533	269	802	1.27%	-3.36%
RD	EASY CHARTER LLC	385	138	524	0.75%	2,545	586	3,131	4.96%	-83.26%
M4	POSTE AIR CARGO	165	58	224	0.32%	173	109	283	0.44%	-20.84%
8V	ASTRAL AVIATION	198		198	0.28%	118		118	0.18%	67.79%
M8	EUROAVIA AIRLINES	88		88	0.12%					
VYU	FLY VAAYU	61	15	76	0.10%					
HY	UZBEKISTAN AIR	51	2	52	0.07%	96		96	0.15%	-45.83%
GH	GEORGIAN AIRLINES	42		42	0.06%					
AZQ	SILK WAY AIRLINES		41	41	0.05%					
CGF	CARGOAIR	17	12	29	0.04%					





Accumulated Cargo Handling on Cargo Aircrafts

Distribution by Airline

Accumulated 2025					Accumulated 2024					
Airline		Incoming Cargo (Ton)	Outgoing Cargo (Ton)	Cargo (Ton)	Rate of Total	Incoming Cargo (Ton)	Outgoing Cargo (Ton)	Cargo (Ton)	Rate of Total	Rate of Change
MJ	MYWAY AIRLINES	12	9	21	0.03%	142	8	150	0.23%	-86.00%
PVV	FLY PRO		16	16	0.02%					
	OTHERS	53	38	90	0.12%	5,175	1,034	6,208	9.84%	-98.55%
TOTAL		48,609	20,984	69,594		43,724	19,353	63,078		10.33%





Cargo Handling on Cargo Aircrafts

Distribution by Countries for March

Country	March 2025				March 2024				
	Incoming Cargo (Ton)	Outgoing Cargo (Ton)	Cargo (Ton)	Rate of Total	Incoming Cargo (Ton)	Outgoing Cargo (Ton)	Cargo (Ton)	Rate of Total	Rate of Change
BELGIUM	3,561	3,322	6,883	26.09%	3,936	2,679	6,615	30.07%	4.05%
GERMANY	3,723	2,230	5,954	22.57%	2,698	2,099	4,798	21.81%	24.09%
CHINA	2,902	182	3,085	11.69%	2,603	348	2,952	13.42%	4.50%
UZBEKISTAN	1,944	143	2,087	7.91%	202	3	205	0.93%	
AZERBAIJAN	861	796	1,657	6.28%	909	856	1,766	8.02%	-6.17%
SPAIN	1,109		1,109	4.20%	253		253	1.15%	
INDIA	666	120	786	2.97%	107		107	0.48%	
KENYA	591	25	616	2.33%	38	25	63	0.28%	
FRANCE	363	169	532	2.01%	166	99	265	1.20%	100.75%
ITALY	295	111	406	1.53%	104	65	169	0.76%	140.23%
NORWAY	317		317	1.20%	417		417	1.89%	-23.98%
GREECE	227	11	239	0.90%					
ETHIOPIA	164	60	224	0.84%	171	77	249	1.13%	-10.04%
EGYPT		198	198	0.75%		198	198	0.90%	
CYPRUS	69	31	100	0.37%	74	13	87	0.39%	14.94%
SWITZERLAND	53	28	81	0.30%	47	46	92	0.41%	-11.95%
CZECH REPUBLIC	50		50	0.18%					
NETHERLANDS	28	13	42	0.15%	34	30	63	0.28%	-33.33%
MACEDONIA	9		9	0.03%					
ROMANIA		9	9	0.03%	27	7	34	0.15%	-73.52%
BULGARIA	3	2	5	0.01%					
OTHERS	1,586	405	1,990	7.54%	3,134	532	3,666	16.66%	-45.71%





Cargo Handling on Cargo Aircrafts

Distribution by Countries for March

March 2025					March 2024				
Country	Incoming Cargo (Ton)	Outgoing Cargo (Ton)	Cargo (Ton)	Rate of Total	Incoming Cargo (Ton)	Outgoing Cargo (Ton)	Cargo (Ton)	Rate of Total	Rate of Change
TOTAL	18,520	7,858	26,378		14,918	7,078	21,996		19.92%





Accumulated Cargo Handling on Cargo Aircrafts

Distribution by Countries

Countries	Accumulated 2025				Accumulated 2024				
	Incoming Cargo (Ton)	Outgoing Cargo (Ton)	Cargo (Ton)	Rate of Total	Incoming Cargo (Ton)	Outgoing Cargo (Ton)	Cargo (Ton)	Rate of Total	Rate of Change
BELGIUM	9,935	8,540	18,475	26.54%	12,218	6,865	19,082	30.25%	-3.18%
GERMANY	8,556	6,152	14,708	21.13%	7,221	6,119	13,339	21.14%	10.26%
CHINA	7,807	503	8,309	11.93%	7,881	936	8,817	13.97%	-5.76%
UZBEKISTAN	5,656	403	6,060	8.70%	202	3	205	0.32%	
AZERBAIJAN	2,429	1,994	4,422	6.35%	2,935	2,502	5,437	8.61%	-18.66%
SPAIN	2,546	29	2,575	3.70%	421		421	0.66%	
INDIA	1,572	330	1,903	2.73%	107		107	0.16%	
KENYA	1,772	47	1,819	2.61%	118	62	180	0.28%	
FRANCE	1,038	419	1,457	2.09%	421	341	761	1.20%	91.45%
ITALY	782	342	1,125	1.61%	331	367	698	1.10%	61.17%
NORWAY	917		917	1.31%	1,069		1,069	1.69%	-14.21%
ETHIOPIA	517	202	720	1.03%	533	269	802	1.27%	-10.22%
GREECE	512	42	554	0.79%		2	2		
SWITZERLAND	141	85	226	0.32%	133	133	266	0.42%	-15.03%
EGYPT		201	201	0.28%		198	198	0.31%	1.51%
CYPRUS	110	48	158	0.22%	200	56	256	0.40%	-38.28%
NETHERLANDS	84	56	140	0.20%	128	136	263	0.41%	-46.76%
MALTA		130	130	0.18%		45	45	0.07%	188.88%
GEORGIA	54		54	0.07%					
CZECH REPUBLIC	50	2	52	0.07%					
TANZANIA		42	42	0.06%					
ESTONIA		39	39	0.05%					





Accumulated Cargo Handling on Cargo Aircrafts

Distribution by Countries

Countries	Accumulated 2025				Accumulated 2024				
	Incoming Cargo (Ton)	Outgoing Cargo (Ton)	Cargo (Ton)	Rate of Total	Incoming Cargo (Ton)	Outgoing Cargo (Ton)	Cargo (Ton)	Rate of Total	Rate of Change
RWANDA		12	12	0.01%					
KUWAIT	10		10	0.01%					
MACEDONIA	9		9	0.01%					
ROMANIA		9	9	0.01%	27	7	34	0.05%	-73.52%
BULGARIA	3	2	5						
BAHRAIN	2		2						
JORDAN	1		1						
OTHERS	4,105	1,354	5,459	7.84%	9,781	1,314	11,095	17.58%	-50.79%
TOTAL	48,609	20,984	69,594		43,724	19,353	63,078		10.33%





Domestic Activity

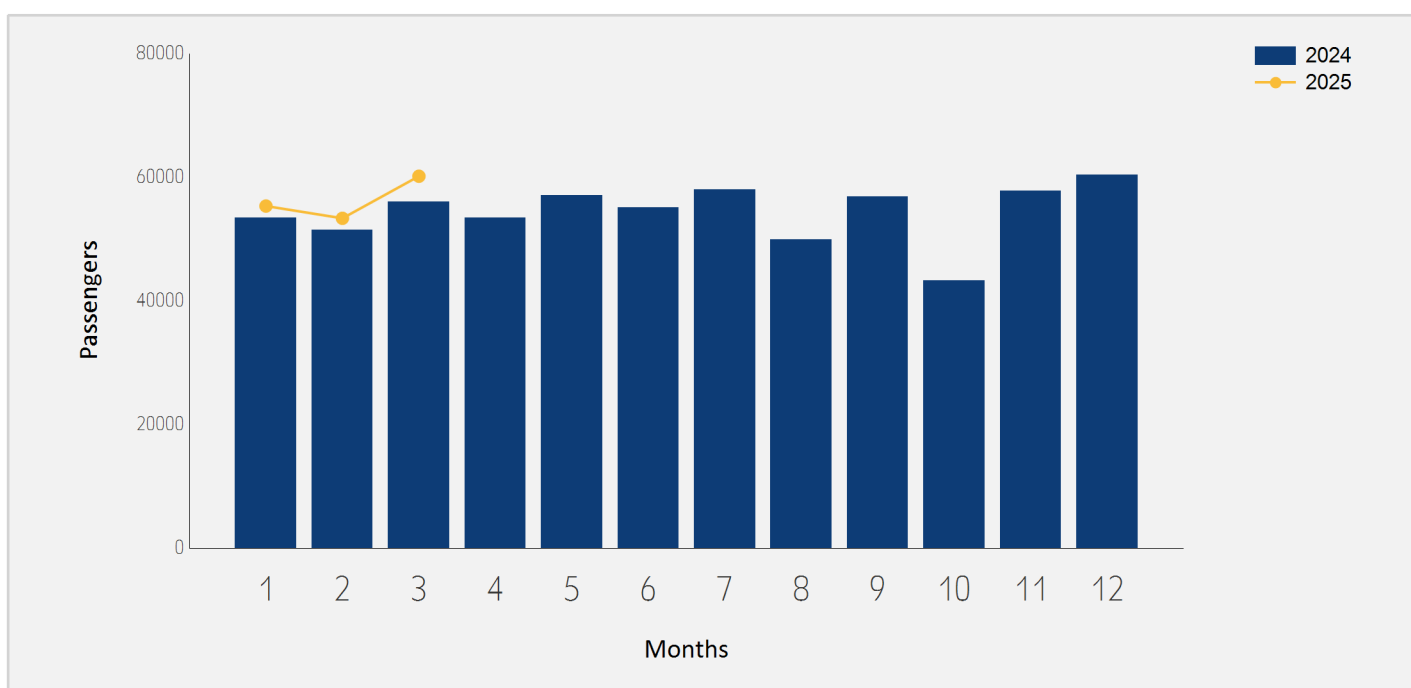




Domestic Passenger Traffic

Distribution by Months

Month	2025	2024	Rate of Change
January	55,348	53,410	3.62%
February	53,363	51,461	3.69%
March	60,174	56,042	7.37%
Total	168,885	160,913	4.95%

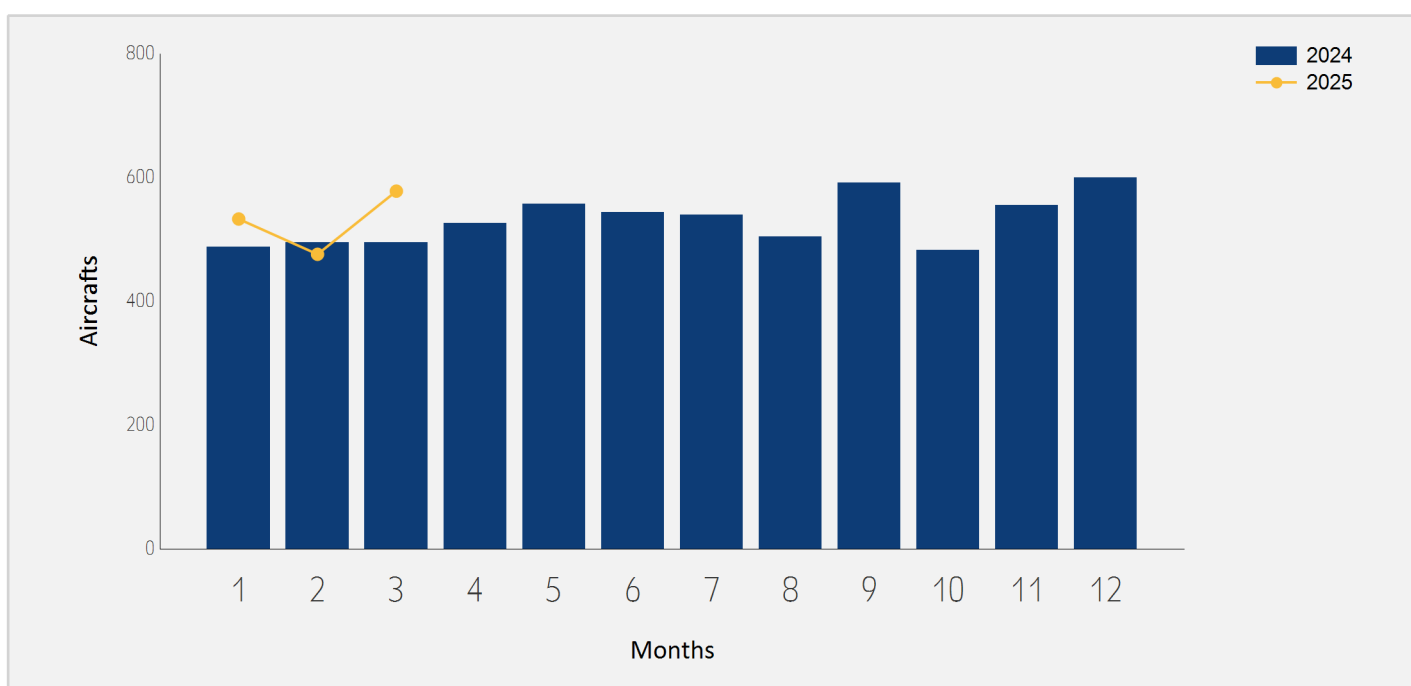




Domestic Aircrafts Traffic

Distribution by Months

Month	2025	2024	Rate of Change
January	533	488	9.22%
February	476	495	-3.83%
March	578	495	16.76%
Total	1,587	1,478	7.37%





Domestic Passengers Traffic

Distribution by Airlines for March

March 2025			March 2024		
Airline	Passengers	Rate of Total	Passengers	Rate of Total	Rate of Change
IZ ARKIA ISRAELI AIRLINES	42,085	69.93%	37,983	67.77%	10.79%
6H ISRAIR AIRLINES	17,882	29.71%	18,040	32.19%	-0.87%
E2 AIR HAIFA	202	0.33%			
OTHERS	5		19	0.03%	-73.68%
TOTAL	60,174		56,042		7.37%

Accumulated Domestic Passengers Traffic

Distribution by Airlines

Accumulated 2025			Accumulated 2024		
Airline	Passengers	Rate of Total	Passengers	Rate of Total	Rate of Change
IZ ARKIA ISRAELI AIRLINES	118,308	70.05%	106,106	65.93%	11.49%
6H ISRAIR AIRLINES	50,192	29.71%	54,754	34.02%	-8.33%
E2 AIR HAIFA					
OTHERS	385	0.22%	53	0.03%	
TOTAL	168,885		160,913		4.95%





Domestic Passenger Traffic

Distribution by Destinations for March

March 2025			March 2024		
Destination	Passengers	Rate of Total	Passengers	Rate of Total	Rate of Change
RAMON	59,975	99.66%	56,032	99.98%	7.03%
OTHERS	199	0.33%	10	0.01%	
TOTAL	60,174		56,042		7.37%

Accumulated Domestic Passenger Traffic

Distribution by Destinations

Accumulated 2025			Accumulated 2024		
Destination	Passengers	Rate of Total	Passengers	Rate of Total	Rate of Change
RAMON	168,495	99.76%	160,878	99.97%	4.73%
OTHERS	390	0.23%	35	0.02%	
TOTAL	168,885		160,913		4.95%

