

Monthly Report

Ben Gurion International Airport

October 2022



Israel Airport Authority

Ben Gurion International Airport

Produced by the Industry & Management Department

This report is protected by copyright and is the exclusive property of the Israel Airports Authority.

It must be emphasized that the data in the report are based on the reports of the airlines, and received under their responsibility.

The information is intended for personal use, and therefore may not be quoted or passed on to any third party without written permission from the Israel Airports Authority.

In addition, no commercial use may be made of this report.

Edit Yehoshua

Activity Coordinator

Tel. +972-3-9752017

Email: edity@iaa.gov.il

Rachel Lehava

Manager, Industrial & Management Dep.

Tel. +972-3-9752019

Email: rachelle@iaa.gov.il

Yossi Tzemach

Head, Industrial & Management Dep.

Tel. +972-3-9752020

Email: yossiz@iaa.gov.il



Dear friends and partners,

I hereby respectfully submit for your review a report summarizing the aviation activity at Ben - Gurion International Airport in October 2022.

During the month, a total of 2,063,277 passengers on 13,551 international and domestic flights passed through Ben- Gurion Airport.

International passenger traffic in October totaled 1,995,924 passengers representing an increase of 153.1% compared to October 2021.

International aircraft traffic totaled 12,769 flights, representing an increase of 71.64% compared to October 2021.

International passenger traffic at Terminal 3 this month totaled 1,853,197 passengers. Passengers on International flights from Terminal 1, serving departing passengers only, totaled 142,727.

On domestic flights 67,353 passengers passed through Ben- Gurion Airport this month, compared with 64,886 in October 2021, an increase of 3.8%.

Israeli airlines carried 596,784 passengers in this month, 29.9% of all travelers passing through Ben - Gurion Airport, an increase of 148.65% relative to the previous October.

The airlines which contributed the most to the increase of passenger traffic this month are: EL AL ISRAEL AIRLINES, WIZZAIR and TURKISH AIRLINES.

The Destination with the highest volume of activity was ISTANBUL with a total of 110,684 passengers to and from, an increase of 130.66% compared to the previous October.

The country with the highest volume of activity was the TURKEY, with 277,844 passengers, constituting 13.92% of all activity.

The Countries which contributed the most to the increase of passenger traffic this month are: TURKEY, GREECE and ITALY

Cargo transportation this month stood at 29,487 tons and reflects a decrease of 12.6% compared to October 2021. 14,131 tons were transported in passenger aircraft and 15,356 tons in cargo aircraft.

Below you will find additional tables providing details about movements of aircraft, passengers and cargo at Ben - Gurion International Airport.

Sincerely yours,
Shmuel Zakay
Managing Director,
Ben-Gurion International Airport



Content



Aviation Activity

Aviation Activity Summary	1
International Activity Summary	2 - 4
Domestic Activity Summary	5



International Activity

Distribution By Months	7 - 8
Distribution By Airlines	9 - 17
Distribution By Countries	18 - 23
Distribution By First Destination	24 - 37



Cargo Activity

Distribution by Transporter	39
Distribution By Months	39
Distribution By Airlines	40 - 44
Distribution By Countries	45 - 47



Domestic Activity

Distribution By Months	49 - 50
Distribution By Airlines	51
Distribution By Destinations	52





Passengers and Aircrafts

Aviation Activity at Ben Gurion International Airport

International Activity

	Current Month			Accumulated Since the beginning of the year		
	October 2022	October 2021	Rate Of Change	2022	2021	Rate Of Change
Incoming Aircrafts	6,394	3,719	71.92%	55,240	25,769	114.36%
Outgoing Aircrafts	6,375	3,720	71.37%	55,209	25,761	114.31%
Total Aircrafts	12,769	7,439	71.64%	110,449	51,530	114.33%
Incoming Passengers	1,084,729	414,074	161.96%	7,911,819	2,232,248	
Outgoing Passengers	911,195	374,509	143.30%	7,807,339	2,265,547	
Transit Passengers	91	2		1,813	138	
Total Passengers	1,995,924	788,583	153.10%	15,719,158	4,497,795	

Domestic Activity

	Current Month			Accumulated Since the beginning of the year		
	October 2022	October 2021	Rate Of Change	2022	2021	Rate Of Change
Aircrafts	782	745	4.96%	8,116	6,509	24.68%
Passengers	67,353	64,886	3.80%	642,413	493,570	30.15%

International and Domestic Activity Summary

	Current Month			Accumulated Since the beginning of the year		
	October 2022	October 2021	Rate Of Change	2022	2021	Rate Of Change
Aircrafts	13,551	8,184	65.57%	118,565	58,039	104.28%
Passengers	2,063,277	853,469	141.75%	16,361,571	4,991,365	





Passengers and Aircrafts

Int'l Aviation Activity at Ben Gurion International Airport by Terminal

Terminal 3

	Current Month			Accumulated Since the beginning of the year		
	October 2022	October 2021	Rate of Change	2022	2021	Rate of Change
Incoming Aircrafts	6,391	3,708	72.35%	55,034	25,416	116.53%
Outgoing Aircrafts	5,520	3,720	48.38%	47,950	25,534	87.78%
Total Aircrafts	11,911	7,428	60.35%	102,984	50,950	102.12%
Incoming Passengers	1,084,563	411,705	163.43%	7,889,439	2,200,728	
Outgoing Passengers	768,634	374,509	105.23%	6,558,963	2,243,512	192.35%
Transit Passengers	91	2		1,813	138	
Total Passengers	1,853,197	786,214	135.71%	14,448,402	4,444,240	

Terminal 1

	Current Month			Accumulated Since the beginning of the year		
	October 2022	October 2021	Rate of Change	2022	2021	Rate of Change
Incoming Aircrafts	3	11	-72.72%	206	353	-41.64%
Outgoing Aircrafts	855			7,259	227	
Total Aircrafts	858	11		7,465	580	
Incoming Passengers	166	2,369	-92.99%	22,380	31,520	-28.99%
Outgoing Passengers	142,561			1,248,376	22,035	
Total Passengers	142,727	2,369		1,270,756	53,555	





Passengers and Aircrafts

Int'l Aviation Activity at Ben Gurion International Airport by Flight Type

Schedule and Charter Flights

	Current Month			Accumulated Since the beginning of the year		
	October 2022	October 2021	Rate of Change	2022	2021	Rate of Change
Incoming Aircrafts	5,654	2,953	91.46%	47,281	18,187	159.97%
Outgoing Aircrafts	5,670	2,965	91.23%	47,380	18,294	158.99%
Total Aircrafts	11,324	5,918	91.34%	94,661	36,481	159.48%
Incoming Passengers	1,083,089	412,679	162.45%	7,894,800	2,220,159	
Outgoing Passengers	909,831	373,416	143.65%	7,791,345	2,254,098	
Transit Passengers	91	2		1,813	135	
Total Passengers	1,992,920	786,095	153.52%	15,686,145	4,474,257	

Private Flights

	Current Month			Accumulated Since the beginning of the year		
	October 2022	October 2021	Rate of Change	2022	2021	Rate of Change
Incoming Aircrafts	435	371	17.25%	4,310	3,407	26.50%
Outgoing Aircrafts	413	374	10.42%	4,289	3,368	27.34%
Total Aircrafts	848	745	13.82%	8,599	6,775	26.92%
Incoming Passengers	1,477	1,113	32.70%	14,405	10,323	39.54%
Outgoing Passengers	1,286	946	35.94%	13,952	9,953	40.17%
Total Passengers	2,763	2,059	34.19%	28,357	20,276	39.85%





Passengers and Aircrafts

Int'l Aviation Activity at Ben Gurion International Airport by Flight Type

Cargo Flights

	Current Month			Accumulated Since the beginning of the year		
	October 2022	October 2021	Rate of Change	2022	2021	Rate of Change
Incoming Aircrafts	279	370	-24.59%	3,360	3,935	-14.61%
Outgoing Aircrafts	268	359	-25.34%	3,245	3,868	-16.10%
Total Aircrafts	547	729	-24.96%	6,605	7,803	-15.35%
Incoming Passengers	12	57	-78.94%	151	168	-10.11%
Outgoing Passengers	17	44	-61.36%	203	256	-20.70%
Total Passengers	29	101	-71.28%	354	424	-16.50%

Other Flights

	Current Month			Accumulated Since the beginning of the year		
	October 2022	October 2021	Rate of Change	2022	2021	Rate of Change
Incoming Aircrafts	26	25	4.00%	289	240	20.41%
Outgoing Aircrafts	24	22	9.09%	295	231	27.70%
Total Aircrafts	50	47	6.38%	584	471	23.99%
Incoming Passengers	151	225	-32.88%	2,463	1,598	54.13%
Outgoing Passengers	61	103	-40.77%	1,839	1,240	48.30%
Total Passengers	212	328	-35.36%	4,302	2,838	51.58%





Passengers and Aircrafts

Domestic Aviation Activity at Ben Gurion International Airport by Flight Type

Schedule Flights

	Current Month			Accumulated Since the beginning of the year		
	October 2022	October 2021	Rate of Change	2022	2021	Rate of Change
Aircrafts	726	672	8.03%	7,386	5,511	34.02%
Passengers	66,770	64,684	3.22%	639,750	492,164	29.98%

Private Flights

	Current Month			Accumulated Since the beginning of the year		
	October 2022	October 2021	Rate of Change	2022	2021	Rate of Change
Aircrafts	26	25	4.00%	289	542	-46.67%
Passengers	70	22		374	468	-20.08%

Other Flights

	Current Month			Accumulated Since the beginning of the year		
	October 2022	October 2021	Rate of Change	2022	2021	Rate of Change
Aircrafts	30	48	-37.50%	441	456	-3.28%
Passengers	513	180	185.00%	2,289	938	144.02%



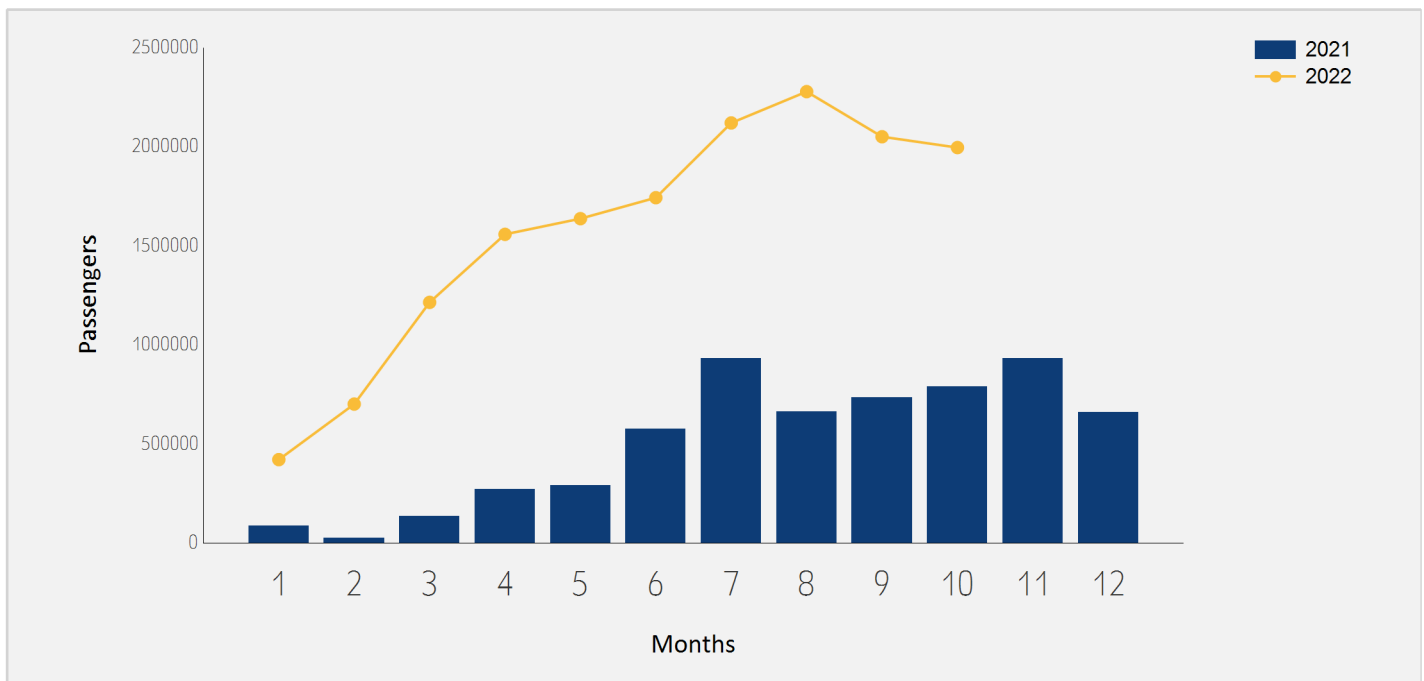

 International Activity



International Passenger Traffic

Distribution by Months

Months	2022	2021	Rate of Change
January	420,563	87,196	
February	700,848	24,755	
March	1,214,559	133,322	
April	1,557,980	271,707	
May	1,637,028	290,037	
June	1,742,983	574,093	
July	2,120,235	931,834	127.53%
August	2,278,318	661,056	
September	2,050,720	735,212	178.92%
October	1,995,924	788,583	153.10%
Total	15,719,158	4,497,795	

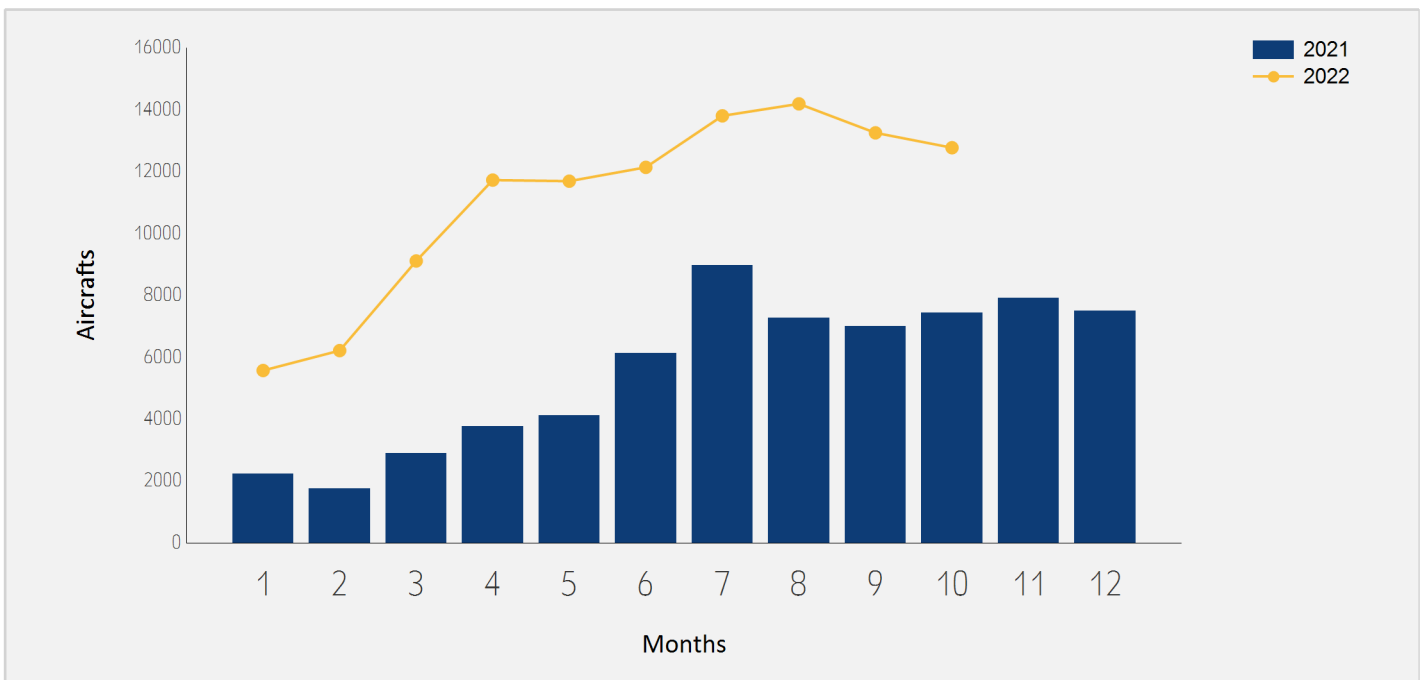




International Aircraft Traffic

Distribution by Months

Months	2022	2021	Rate of Change
January	5,571	2,225	150.38%
February	6,214	1,753	
March	9,110	2,888	
April	11,724	3,761	
May	11,689	4,119	183.78%
June	12,136	6,120	98.30%
July	13,799	8,967	53.88%
August	14,187	7,269	95.17%
September	13,250	6,989	89.58%
October	12,769	7,439	71.64%
Total	110,449	51,530	114.33%





International Passenger Traffic

Distribution by Airline for October

		October 2022		October 2021		
Airline		Passengers	Rate of Total	Passengers	Rate of Total	Rate of Change
LY	EL AL ISRAEL AIRLINES	418,090	20.94%	167,513	21.24%	149.58%
W6	WIZZAIR	159,488	7.99%	26,905	3.41%	
TK	TURKISH AIRLINES	143,461	7.18%	59,198	7.50%	142.34%
FR	RYANAIR	108,233	5.42%	86,458	10.96%	25.18%
6H	ISRAIR AIRLINES	93,091	4.66%	38,384	4.86%	142.52%
IZ	ARKIA ISRAELI AIRLINES	84,115	4.21%	33,091	4.19%	154.19%
PC	PEGASUS AIRLINES	83,706	4.19%	24,071	3.05%	
EZY	EASYJET	73,608	3.68%	35,278	4.47%	108.65%
UA	UNITED AIRLINES	63,405	3.17%	37,851	4.79%	67.51%
LH	LUFTHANSA	52,503	2.63%	19,490	2.47%	169.38%
BZ	BLUE BIRD AIRWAYS	43,439	2.17%	9,459	1.19%	
A3	AEGEAN AIRLINES	35,967	1.80%	11,419	1.44%	
FZ	FLYDUBAI	30,607	1.53%	16,124	2.04%	89.82%
XC	CORONDON AIRLINES	29,682	1.48%	2,595	0.32%	
TO	TRANSAVIA FRANCE	27,229	1.36%	8,026	1.01%	
U8	TUS AIRWAYS	25,636	1.28%	3,984	0.50%	
BA	BRITISH AIRWAYS PLC	25,437	1.27%	11,795	1.49%	115.65%
AF	AIR FRANCE	25,011	1.25%	11,511	1.45%	117.27%
OS	AUSTRIAN AIRLINES	24,491	1.22%	9,410	1.19%	160.26%
AA	AMERICAN AIRLINES	24,102	1.20%	14,209	1.80%	69.62%
AZ	ITALIA TRASPORTO AEREO	22,246	1.11%	4,156	0.52%	





International Passenger Traffic

Distribution by Airline for October

		October 2022		October 2021		
	Airline	Passengers	Rate of Total	Passengers	Rate of Total	Rate of Change
LO	LOT POLISH AIRLINES	22,089	1.10%	5,693	0.72%	
EK	EMIRATES	21,542	1.07%			
LX	SWISS INT`L AIRLINES	21,418	1.07%	11,489	1.45%	86.42%
DL	DELTA AIRLINES	21,246	1.06%	20,937	2.65%	1.47%
AC	AIR CANADA	19,950	0.99%	8,754	1.11%	127.89%
SN	BRUSSELS AIRLINES	17,137	0.85%	2,141	0.27%	
IB	IBERIA	16,773	0.84%	5,731	0.72%	192.67%
TWI	TAILWIND AIRLINES	15,459	0.77%	3,572	0.45%	
ET	ETHIOPIAN AIRLINES	14,655	0.73%	5,201	0.65%	181.77%
QS	SMARTWINGS	14,619	0.73%	6,931	0.87%	110.92%
RJ	ROYAL JORDANIAN	13,964	0.69%	314	0.03%	
VS	VIRGIN ATLANTIC AIRWAYS	13,193	0.66%	6,942	0.88%	90.04%
UX	AIR EUROPA Lineas Aereas	13,049	0.65%	4,705	0.59%	177.34%
EY	ETIHAD AIRWAYS	11,304	0.56%	1,340	0.16%	
HV	TRANSAVIA	10,631	0.53%	2,604	0.33%	
KL	K.L.M.	9,826	0.49%	8,899	1.12%	10.41%
NO	NEOS	8,811	0.44%	18		
VY	VUELING AIRLINES S.A.	8,328	0.41%	169	0.02%	
A9	GEORGIAN AIRWAYS	8,163	0.40%	5,540	0.70%	47.34%
J2	AZERBAIJAN AIRLINES	6,930	0.34%	1,520	0.19%	
RO	TAROM - RUMANIAN AIR TRAN	6,670	0.33%	2,185	0.27%	





International Passenger Traffic

Distribution by Airline for October

		October 2022		October 2021		
	Airline	Passengers	Rate of Total	Passengers	Rate of Total	Rate of Change
AT	ROYAL AIR MAROC	6,532	0.32%			
D8	NORWEGIAN AIR SHUTTLE	6,513	0.32%	225	0.02%	
TP	AIR PORTUGAL	6,509	0.32%	2,470	0.31%	163.52%
CX	CATHAY PACIFIC AIRWAYS	6,219	0.31%	827	0.10%	
MS	EGYPTAIR AIRLINES	5,521	0.27%	634	0.08%	
AI	AIR INDIA	5,151	0.25%	1,173	0.14%	
CY	CYPRUS AIRWAYS	5,017	0.25%			
HY	UZBEKISTAN AIR	4,846	0.24%	1,768	0.22%	174.09%
H4	HISKY EUROPE SRL	4,692	0.23%			
FB	BULGARIA AIR	4,409	0.22%	800	0.10%	
9U	AIR MOLDOVA	3,936	0.19%	2,314	0.29%	70.09%
HM	AIR SEYCHELLES	3,665	0.18%	935	0.11%	
SM	AIR CAIRO	3,607	0.18%			
H7	HISKY	3,387	0.16%			
XQ	SUN EXPRESS	3,365	0.16%			
GF	GULF AIR - BAHREIN	3,293	0.16%	1,045	0.13%	
BT	AIR BALTIC	3,154	0.15%	881	0.11%	
AY	FINNAIR	3,008	0.15%	769	0.09%	
XR	CORENDON EUROPE	2,908	0.14%			
WZ	RED WINGS AIRLINES	2,862	0.14%			
A4	AZIMUTH AIRLINES	2,801	0.14%			





International Passenger Traffic

Distribution by Airline for October

		October 2022		October 2021		
Airline		Passengers	Rate of Total	Passengers	Rate of Total	Rate of Change
5F	FLYONE	2,641	0.13%	1,043	0.13%	153.21%
FH	FREEBIRD AIRLINES	1,765	0.08%	1,558	0.19%	13.28%
BUC	EUROPEAN AIR CHARTER	1,600	0.08%			
OU	CROATIA AIR	1,297	0.06%			
	OTHERS	7,922	0.39%	36,529	4.63%	-78.31%
TOTAL		1,995,924		788,583		153.10%





Int'l Accumulated Passenger Traffic

Distribution by Airline

		Accumulated 2022		Accumulated 2021		
Airline		Passengers	Rate of Total	Passengers	Rate of Total	Rate of Change
LY	EL AL ISRAEL AIRLINES	3,430,660	21.82%	1,071,094	23.81%	
W6	WIZZAIR	1,107,461	7.04%	204,995	4.55%	
TK	TURKISH AIRLINES	1,068,591	6.79%	246,142	5.47%	
FR	RYANAIR	1,038,232	6.60%	319,506	7.10%	
6H	ISRAIR AIRLINES	720,601	4.58%	257,766	5.73%	179.55%
PC	PEGASUS AIRLINES	657,053	4.17%	145,500	3.23%	
EZY	EASYJET	652,322	4.14%	139,492	3.10%	
IZ	ARKIA ISRAELI AIRLINES	620,936	3.95%	178,643	3.97%	
UA	UNITED AIRLINES	540,592	3.43%	276,331	6.14%	95.63%
LH	LUFTHANSA	462,311	2.94%	140,788	3.13%	
A3	AEGEAN AIRLINES	302,241	1.92%	91,756	2.04%	
FZ	FLYDUBAI	289,781	1.84%	75,591	1.68%	
BZ	BLUE BIRD AIRWAYS	276,848	1.76%	80,290	1.78%	
TO	TRANSAVIA FRANCE	230,684	1.46%	34,706	0.77%	
XC	CORONDON AIRLINES	227,246	1.44%	14,176	0.31%	
U8	TUS AIRWAYS	220,422	1.40%	13,799	0.30%	
AF	AIR FRANCE	210,452	1.33%	63,622	1.41%	
AA	AMERICAN AIRLINES	196,484	1.24%	74,850	1.66%	162.50%
LX	SWISS INT'L AIRLINES	193,605	1.23%	62,432	1.38%	
OS	AUSTRIAN AIRLINES	186,759	1.18%	61,131	1.35%	
LO	LOT POLISH AIRLINES	184,972	1.17%	28,249	0.62%	





Int'l Accumulated Passenger Traffic

Distribution by Airline

		Accumulated 2022		Accumulated 2021		
Airline		Passengers	Rate of Total	Passengers	Rate of Total	Rate of Change
DL	DELTA AIRLINES	184,324	1.17%	126,591	2.81%	45.60%
BA	BRITISH AIRWAYS PLC	168,460	1.07%	48,376	1.07%	
AC	AIR CANADA	142,182	0.90%	43,063	0.95%	
IB	IBERIA	137,367	0.87%	23,351	0.51%	
AZ	ITALIA TRASPORTO AEREO	134,205	0.85%	13,749	0.30%	
QS	SMARTWINGS	106,128	0.67%	39,702	0.88%	167.31%
SN	BRUSSELS AIRLINES	105,376	0.67%	15,783	0.35%	
VS	VIRGIN ATLANTIC AIRWAYS	104,978	0.66%	35,712	0.79%	193.95%
ET	ETHIOPIAN AIRLINES	104,687	0.66%	38,007	0.84%	175.44%
UX	AIR EUROPA Lineas Aereas	98,056	0.62%	15,618	0.34%	
KL	K.L.M.	96,111	0.61%	46,199	1.02%	108.03%
TWI	TAILWIND AIRLINES	95,206	0.60%	16,242	0.36%	
EK	EMIRATES	79,209	0.50%			
EY	ETIHAD AIRWAYS	71,919	0.45%	6,228	0.13%	
A9	GEORGIAN AIRWAYS	67,628	0.43%	27,456	0.61%	146.31%
HV	TRANSAVIA	64,966	0.41%	10,664	0.23%	
RO	TAROM - RUMANIAN AIR TRAN	59,402	0.37%	19,066	0.42%	
VY	VUELING AIRLINES S.A.	59,215	0.37%	1,045	0.02%	
NO	NEOS	50,629	0.32%	2,295	0.05%	
TP	AIR PORTUGAL	49,816	0.31%	3,732	0.08%	
RJ	ROYAL JORDANIAN	48,546	0.30%	1,241	0.02%	





Int'l Accumulated Passenger Traffic

Distribution by Airline

		Accumulated 2022		Accumulated 2021		
Airline		Passengers	Rate of Total	Passengers	Rate of Total	Rate of Change
FB	BULGARIA AIR	46,626	0.29%	13,155	0.29%	
D8	NORWEGIAN AIR SHUTTLE	43,326	0.27%	225		
AI	AIR INDIA	39,521	0.25%	6,252	0.13%	
J2	AZERBAIJAN AIRLINES	38,886	0.24%	6,515	0.14%	
FH	FREEBIRD AIRLINES	35,760	0.22%	14,156	0.31%	152.61%
MS	EGYPTAIR AIRLINES	35,480	0.22%	634	0.01%	
AT	ROYAL AIR MAROC	34,285	0.21%			
HY	UZBEKISTAN AIR	33,231	0.21%	5,694	0.12%	
9U	AIR MOLDOVA	31,691	0.20%	23,177	0.51%	36.73%
CY	CYPRUS AIRWAYS	31,377	0.19%	2,790	0.06%	
BUC	EUROPEAN AIR CHARTER	28,879	0.18%	11,999	0.26%	140.67%
XQ	SUN EXPRESS	28,399	0.18%			
H4	HISKY EUROPE SRL	27,942	0.17%			
PS	UKRAINE INTL AIR	27,663	0.17%	139,313	3.09%	-80.14%
AY	FINNAIR	25,823	0.16%	4,085	0.09%	
HM	AIR SEYCHELLES	24,599	0.15%	9,222	0.20%	166.74%
BT	AIR BALTIC	23,982	0.15%	5,795	0.12%	
OB	BLUE AIR AVIATION	23,045	0.14%	3,606	0.08%	
GF	GULF AIR - BAHREIN	21,618	0.13%	1,160	0.02%	
XR	CORENDON EUROPE	20,928	0.13%			
SU	AEROFLOT RUSSIAN AIRLINES	20,411	0.12%	42,346	0.94%	-51.79%





Int'l Accumulated Passenger Traffic

Distribution by Airline

		Accumulated 2022		Accumulated 2021		
Airline		Passengers	Rate of Total	Passengers	Rate of Total	Rate of Change
SM	AIR CAIRO	19,932	0.12%			
5F	FLYONE	19,618	0.12%	7,868	0.17%	149.33%
A4	AZIMUTH AIRLINES	19,004	0.12%			
H7	HISKY	16,656	0.10%			
WZ	RED WINGS AIRLINES	13,774	0.08%			
CX	CATHAY PACIFIC AIRWAYS	13,181	0.08%	2,394	0.05%	
OU	CROATIA AIR	11,295	0.07%			
PQ	SKYUP AIRLINES	11,200	0.07%	2,561	0.05%	
FV	ROSSIYA AIRLINES	7,970	0.05%	77		
HST	HESTON AIRLINES	6,554	0.04%	48		
JAV	JORDANIAN AVIATION	3,745	0.02%	496	0.01%	
IO	IRAERO AIRLINES	3,341	0.02%			
B2	BELAVIA AIRLINE	3,291	0.02%	23,397	0.52%	-85.93%
AHS	AERO HANDLING	2,137	0.01%	1,010	0.02%	111.58%
	OTHERS	77,325	0.49%	54,841	1.21%	40.99%
TOTAL		15,719,158		4,497,795		





International Passenger Traffic

Distribution by Israeli Airlines for October

		October 2022		October 2021		
Airlines		Passengers	Rate of Total	Passengers	Rate of Total	Rate of Change
LY	EL AL ISRAEL AIRLINES	418,090	20.94%	167,513	21.24%	149.58%
6H	ISRAIR AIRLINES	93,091	4.66%	38,384	4.86%	142.52%
IZ	ARKIA ISRAELI AIRLINES	84,115	4.21%	33,091	4.19%	154.19%
	OTHERS	1,488	0.07%	1,015	0.12%	46.60%
	TOTAL	596,784	29.90%	240,003	30.43%	148.65%

Int'l Accumulated Passenger Traffic

Distribution by Israeli Airlines

		Accumulated 2022		Accumulated 2021		
Airlines		Passengers	Rate of Total	Passengers	Rate of Total	Rate of Change
LY	EL AL ISRAEL AIRLINES	3,430,660	21.82%	1,071,094	23.81%	
6H	ISRAIR AIRLINES	720,601	4.58%	257,766	5.73%	179.55%
IZ	ARKIA ISRAELI AIRLINES	620,936	3.95%	178,643	3.97%	
	OTHERS	18,025	0.11%	6,669	0.14%	170.28%
	TOTAL	4,790,222	30.47%	1,514,172	33.66%	





International Passenger Traffic

Distribution by Countries for October

Countries	October 2022		October 2021		
	Passengers	Rate of Total	Passengers	Total of Rate	Rate of Change
TURKEY	277,844	13.92%	91,217	11.56%	
UNITED STATES	179,594	8.99%	112,624	14.28%	59.46%
GREECE	171,394	8.58%	46,362	5.87%	
ITALY	136,307	6.82%	36,496	4.62%	
FRANCE	115,989	5.81%	55,122	6.99%	110.42%
UNITED KINGDOM	112,755	5.64%	44,416	5.63%	153.86%
UNITED ARAB EMIRATES	108,807	5.45%	27,618	3.50%	
GERMANY	102,948	5.15%	35,325	4.47%	191.43%
CYPRUS	82,557	4.13%	28,323	3.59%	191.48%
SPAIN	71,548	3.58%	21,235	2.69%	
AUSTRIA	52,725	2.64%	35,598	4.51%	48.11%
ROMANIA	50,663	2.53%	15,614	1.98%	
GEORGIA	49,945	2.50%	30,044	3.80%	66.23%
HUNGARY	49,834	2.49%	29,398	3.72%	69.51%
POLAND	44,321	2.22%	11,542	1.46%	
NETHERLANDS	42,733	2.14%	19,497	2.47%	119.17%
SWITZERLAND	42,009	2.10%	16,924	2.14%	148.22%
BELGIUM	25,803	1.29%	4,837	0.61%	
BULGARIA	24,516	1.22%	5,329	0.67%	
CZECH REPUBLIC	24,009	1.20%	23,160	2.93%	3.66%
EGYPT	23,861	1.19%	732	0.09%	
CANADA	23,839	1.19%	10,174	1.29%	134.31%





International Passenger Traffic

Distribution by Countries for October

Countries	October 2022		October 2021		Rate of Change
	Passengers	Rate of Total	Passengers	Total of Rate	
MOROCCO	19,432	0.97%	3,752	0.47%	
THAILAND	18,218	0.91%	2,840	0.36%	
RUSSIAN FEDERATION	15,145	0.75%	16,321	2.06%	-7.20%
ETHIOPIA	14,655	0.73%	5,210	0.66%	181.28%
JORDAN	14,155	0.70%	384	0.04%	
PORTUGAL	13,157	0.65%	4,736	0.60%	177.80%
MONTENEGRO	11,184	0.56%	4,738	0.60%	136.04%
MOLDOVA	9,964	0.49%	3,370	0.42%	195.66%
AZERBAIJAN	8,630	0.43%	3,043	0.38%	183.60%
CHINA	6,219	0.31%	1,067	0.13%	
LITHUANIA	5,206	0.26%	1,838	0.23%	183.24%
INDIA	5,162	0.25%	1,173	0.14%	
UZBEKISTAN	4,846	0.24%	1,857	0.23%	160.95%
SEYCHELLES	4,765	0.23%	857	0.10%	
CROATIA	3,350	0.16%	15		
BAHRAIN	3,309	0.16%	1,045	0.13%	
SOUTH AFRICA	3,303	0.16%			
SWEDEN	3,265	0.16%	107	0.01%	
DENMARK	3,248	0.16%	1,579	0.20%	105.69%
LATVIA	3,158	0.15%	881	0.11%	
FINLAND	3,008	0.15%	902	0.11%	
TANZANIA	2,754	0.13%	745	0.09%	





International Passenger Traffic

Distribution by Countries for October

Countries	October 2022		October 2021		
	Passengers	Rate of Total	Passengers	Total of Rate	Rate of Change
SLOVENIA	1,818	0.09%			
MALTA	1,749	0.08%	18		
SERBIA	1,620	0.08%	1,269	0.16%	27.65%
MALDIVES	487	0.02%	78		
OTHERS	116		29,171	3.69%	-99.60%
TOTAL	1,995,924		788,583		153.10%





Int'l Accumulated Passenger Traffic

Distribution by Countries

Countries	Accumulated 2022		Accumulated 2021		
	Passengers	Rate of Total	Passengers	Rate of Total	Rate of Change
TURKEY	2,116,320	13.46%	437,617	9.72%	
UNITED STATES	1,554,986	9.89%	784,710	17.44%	98.16%
GREECE	1,343,983	8.54%	461,026	10.25%	191.52%
ITALY	1,035,995	6.59%	137,788	3.06%	
FRANCE	1,010,629	6.42%	277,510	6.16%	
UNITED KINGDOM	888,417	5.65%	192,786	4.28%	
GERMANY	869,516	5.53%	237,546	5.28%	
UNITED ARAB EMIRATES	720,952	4.58%	148,622	3.30%	
CYPRUS	574,380	3.65%	151,760	3.37%	
SPAIN	531,729	3.38%	65,242	1.45%	
AUSTRIA	443,706	2.82%	159,322	3.54%	178.49%
GEORGIA	408,057	2.59%	174,818	3.88%	133.41%
HUNGARY	403,618	2.56%	100,035	2.22%	
ROMANIA	387,547	2.46%	101,258	2.25%	
SWITZERLAND	383,719	2.44%	104,091	2.31%	
POLAND	367,393	2.33%	57,546	1.27%	
NETHERLANDS	361,311	2.29%	89,534	1.99%	
BULGARIA	297,248	1.89%	85,823	1.90%	
CZECH REPUBLIC	214,126	1.36%	82,417	1.83%	159.80%
BELGIUM	186,968	1.18%	30,406	0.67%	
CANADA	181,171	1.15%	47,365	1.05%	
RUSSIAN FEDERATION	145,398	0.92%	80,098	1.78%	81.52%





Int'l Accumulated Passenger Traffic

Distribution by Countries

Countries	Accumulated 2022		Accumulated 2021		
	Passengers	Rate of Total	Passengers	Rate of Total	Rate of Change
EGYPT	143,982	0.91%	1,940	0.04%	
THAILAND	115,633	0.73%	17,428	0.38%	
PORTUGAL	108,852	0.69%	11,914	0.26%	
MOROCCO	107,345	0.68%	6,437	0.14%	
ETHIOPIA	104,751	0.66%	38,279	0.85%	173.65%
MOLDOVA	78,880	0.50%	32,407	0.72%	143.40%
MONTENEGRO	75,299	0.47%	25,046	0.55%	
AZERBAIJAN	58,905	0.37%	9,153	0.20%	
JORDAN	53,958	0.34%	3,080	0.06%	
LITHUANIA	46,901	0.29%	7,987	0.17%	
UKRAINE	39,742	0.25%	224,481	4.99%	-82.29%
INDIA	39,558	0.25%	7,400	0.16%	
FINLAND	35,424	0.22%	4,229	0.09%	
UZBEKISTAN	33,236	0.21%	6,221	0.13%	
LATVIA	24,019	0.15%	5,804	0.12%	
SEYCHELLES	23,761	0.15%	18,055	0.40%	31.60%
DENMARK	22,307	0.14%	4,717	0.10%	
SOUTH AFRICA	22,233	0.14%	109		
BAHRAIN	21,971	0.13%	1,401	0.03%	
CROATIA	21,309	0.13%	613	0.01%	
SWEDEN	21,204	0.13%	582	0.01%	
SERBIA	18,401	0.11%	10,267	0.22%	79.22%





Int'l Accumulated Passenger Traffic

Distribution by Countries

Countries	Accumulated 2022		Accumulated 2021		
	Passengers	Rate of Total	Passengers	Rate of Total	Rate of Change
SLOVENIA	16,462	0.10%	2,334	0.05%	
CHINA	13,684	0.08%	8,303	0.18%	64.80%
MALTA	13,249	0.08%	129		
TANZANIA	12,367	0.07%	4,903	0.10%	152.23%
ICELAND	6,638	0.04%	3,309	0.07%	100.60%
BELARUS	3,298	0.02%	23,635	0.52%	-86.04%
MACEDONIA	2,649	0.01%	32		
OTHERS	5,971	0.03%	10,280	0.22%	-41.91%
TOTAL	15,719,158		4,497,795		





International Passenger Traffic

Distribution by First Destination for October

Destination	October 2022		October 2021		
	Passengers	Rate of Total	Passengers	Rate of Total	Rate of Change
ISTANBUL	110,684	5.54%	47,985	6.08%	130.66%
DUBAI	84,962	4.25%	25,831	3.27%	
ANTALYA	79,280	3.97%	11,604	1.47%	
ISTANBUL-SABIHA GOKCHEN	77,538	3.88%	31,159	3.95%	148.84%
PARIS-CHARLES DE GAULLE	75,053	3.76%	39,939	5.06%	87.91%
ATHENS	68,028	3.40%	25,342	3.21%	168.43%
NEW YORK - J.F.KENNEDY	63,592	3.18%	49,150	6.23%	29.38%
ROME - FIUMICINO	61,468	3.07%	16,599	2.10%	
LARNACA	60,050	3.00%	10,675	1.35%	
LONDON - HEATHROW	59,196	2.96%	32,183	4.08%	83.93%
NEW YORK - NEWARK	56,418	2.82%	37,130	4.70%	51.94%
VIENNA	52,719	2.64%	35,530	4.50%	48.37%
BUDAPEST	47,589	2.38%	28,321	3.59%	68.03%
AMSTERDAM	42,723	2.14%	19,497	2.47%	119.12%
BUCHAREST - OTOPENI	41,574	2.08%	14,323	1.81%	190.26%
MADRID	40,541	2.03%	12,572	1.59%	
FRANKFURT	37,317	1.86%	16,194	2.05%	130.43%
LUTON	34,962	1.75%	8,917	1.13%	
HERAKLION	34,822	1.74%	2,262	0.28%	
RHODES-PARADISI	33,181	1.66%	4,924	0.62%	
BARCELONA	30,672	1.53%	8,641	1.09%	
ZURICH	29,984	1.50%	13,477	1.70%	122.48%





International Passenger Traffic

Distribution by First Destination for October

Destination	October 2022		October 2021		
	Passengers	Rate of Total	Passengers	Rate of Total	Rate of Change
MILAN-MALPENSA	29,218	1.46%	9,347	1.18%	
BERLIN BRANDENBURG INTL	28,356	1.42%	9,947	1.26%	185.07%
MUNICH	28,138	1.40%	4,702	0.59%	
WARSAW	26,170	1.31%	8,738	1.10%	199.49%
BATUMI	26,100	1.30%	17,688	2.24%	47.55%
PARIS-ORLY	24,280	1.21%	7,933	1.00%	
PRAGUE-RUZYNE	24,009	1.20%	23,077	2.92%	4.03%
TBILISI	23,845	1.19%	12,353	1.56%	93.03%
ABU DHABI	23,624	1.18%	1,597	0.20%	
PAPHOS	22,507	1.12%	17,648	2.23%	27.53%
THESSALONIKI	20,172	1.01%	4,081	0.51%	
TORONTO	20,050	1.00%	8,591	1.08%	133.38%
BRUSSELS	19,706	0.98%	4,761	0.60%	
SHARM EL SHEIKH	18,269	0.91%	33		
SOFIA	16,557	0.82%	4,253	0.53%	
MIAMI INTERNATIONAL	15,177	0.76%	9,094	1.15%	66.89%
BANGKOK INTL.-SUARNABHUM	14,981	0.75%			
SAN FRANCISCO	14,866	0.74%	6,759	0.85%	119.94%
ADDIS ABABA	14,655	0.73%	5,210	0.66%	181.28%
KRAKOW	14,390	0.72%	2,607	0.33%	
AMMAN (QUEEN ALIA INT'L)	14,067	0.70%	332	0.04%	
LISBON	13,131	0.65%	4,736	0.60%	177.25%





International Passenger Traffic

Distribution by First Destination for October

Destination	October 2022		October 2021		
	Passengers	Rate of Total	Passengers	Rate of Total	Rate of Change
MARRAKESH	12,900	0.64%	2,940	0.37%	
LONDON - GATWICK	12,429	0.62%	206	0.02%	
BERGAMO	10,256	0.51%	5,670	0.71%	80.88%
CHISINAU	9,964	0.49%	3,370	0.42%	195.66%
MOSCOW-DOMODEDOVO	9,887	0.49%	6,613	0.83%	49.50%
BOSTON-LOGAN INT	9,064	0.45%	3		
GENEVA	8,906	0.44%	2,290	0.29%	
LOS ANGELES	8,853	0.44%	5,677	0.71%	55.94%
BAKU HEYDAR ALIYEV INT'L	8,630	0.43%	3,041	0.38%	183.78%
NAPLES-CAPODICHINO	8,613	0.43%	2,054	0.26%	
DALAMAN	8,406	0.42%	123	0.01%	
TIVAT	8,377	0.41%	4,738	0.60%	76.80%
VARNA	7,959	0.39%	1,076	0.13%	
VENICE	7,142	0.35%	14		
NICE	6,930	0.34%	2,057	0.26%	
CASABLANCA-MOHAMMED V	6,532	0.32%	794	0.10%	
CATANIA FONTANAROSSA	6,460	0.32%	2		
HONG KONG INT'L	6,219	0.31%	832	0.10%	
MANCHESTER	6,106	0.30%	2,727	0.34%	123.90%
BRUSSELS - CHARLEROI	6,076	0.30%			
WASHINGTON-DULLES	5,972	0.29%			
CLUJ NAPOCA	5,897	0.29%	686	0.08%	





International Passenger Traffic

Distribution by First Destination for October

Destination	October 2022		October 2021		
	Passengers	Rate of Total	Passengers	Rate of Total	Rate of Change
MARSEILLE	5,584	0.27%	2,430	0.30%	129.79%
CAIRO INTERNATIONAL	5,557	0.27%	688	0.08%	
CHICAGO - O'HARE	5,503	0.27%	4,614	0.58%	19.26%
VILNIUS INTL	5,206	0.26%	1,814	0.23%	186.99%
DELHI	5,151	0.25%	1,173	0.14%	
CORFU	4,988	0.24%	2,471	0.31%	101.86%
TASHKENT	4,846	0.24%	1,857	0.23%	160.95%
MAHE SEYCHELLES INTL	4,765	0.23%	857	0.10%	
TURIN	4,188	0.20%			
KOS	3,891	0.19%			
MONTREAL - DORVAL	3,789	0.18%	1,583	0.20%	139.35%
KATOWICE	3,469	0.17%			
ZAGREB	3,347	0.16%			
BAHRAIN	3,309	0.16%	1,045	0.13%	
JOHANNESBURG	3,303	0.16%			
STOCKHOLM-ARLANDA	3,265	0.16%	92	0.01%	
COPENHAGEN KASTRUP	3,248	0.16%	1,579	0.20%	105.69%
MEMMINGEN	3,240	0.16%	1,919	0.24%	68.83%
PHUKET	3,237	0.16%	2,840	0.36%	13.97%
IASI	3,181	0.15%	579	0.07%	
RIGA	3,158	0.15%	881	0.11%	
BASEL	3,109	0.15%	1,117	0.14%	178.33%





International Passenger Traffic

Distribution by First Destination for October

Destination	October 2022		October 2021		
	Passengers	Rate of Total	Passengers	Rate of Total	Rate of Change
BOLOGNA-BORGO PANIGALE	3,108	0.15%			
HELSINKI	3,008	0.15%	902	0.11%	
LYON - SATOLAS	2,949	0.14%	2,069	0.26%	42.53%
BADEN BADEN	2,912	0.14%	2,337	0.29%	24.60%
PODGORICA	2,807	0.14%			
DUSSELDORF	2,772	0.13%	106	0.01%	
MINERALNYE VODY	2,754	0.13%			
BARI -PALESE MACCHIE	2,572	0.12%	180	0.02%	
DEBRECEN	2,245	0.11%	1,077	0.13%	108.44%
VILAFRANCA-VERONA	2,131	0.10%	18		
MIKONOS	1,952	0.09%	44		
LJUBLJANA	1,818	0.09%			
KARPATOS	1,792	0.08%			
MALTA	1,749	0.08%	18		
BELGRADE	1,620	0.08%	1,269	0.16%	27.65%
ZANZIBAR	1,562	0.07%	745	0.09%	109.66%
TRABZON	1,532	0.07%	2		
SANTORINI	1,387	0.06%	2,280	0.28%	-39.16%
SOCHI	1,219	0.06%	63		
MOSCOW-ZHUKOVSKY INTL AIR	1,214	0.06%			
KILIMANJARO	1,192	0.05%			
TOULOUSE	1,119	0.05%			





International Passenger Traffic

Distribution by First Destination for October

Destination	October 2022		October 2021		
	Passengers	Rate of Total	Passengers	Rate of Total	Rate of Change
PREVEZA	1,109	0.05%	141	0.01%	
TREVISO	1,070	0.05%	2,511	0.31%	-57.38%
MALE INT'L	487	0.02%	78		
VALENCIA	326	0.01%			
IZMIR-ADNAN MENDERES	310	0.01%	71		
POZNAN	289	0.01%	86	0.01%	
OTHERS	1,386	0.06%	46,392	5.88%	-97.01%
TOTAL	1,995,924		788,583		153.10%





Int'l Accumulated Passenger Traffic

Distribution by First Destination

Destination	Accumulated 2022		Accumulated 2021		Rate of Change
	Passengers	Rate of Total	Passengers	Rate of Total	
ISTANBUL	778,802	4.95%	188,396	4.18%	
ISTANBUL-SABIHA GOKCHEN	643,058	4.09%	160,072	3.55%	
PARIS-CHARLES DE GAULLE	624,884	3.97%	212,294	4.71%	194.34%
ANTALYA	587,658	3.73%	78,261	1.73%	
NEW YORK - J.F.KENNEDY	568,212	3.61%	322,027	7.15%	76.44%
DUBAI	551,389	3.50%	139,532	3.10%	
NEW YORK - NEWARK	492,268	3.13%	265,278	5.89%	85.56%
ATHENS	487,305	3.10%	158,196	3.51%	
LONDON - HEATHROW	472,968	3.00%	156,170	3.47%	
ROME - FIUMICINO	452,257	2.87%	58,368	1.29%	
VIENNA	426,587	2.71%	158,090	3.51%	169.83%
BUDAPEST	382,597	2.43%	98,958	2.20%	
LARNACA	377,202	2.39%	82,983	1.84%	
AMSTERDAM	361,032	2.29%	89,408	1.98%	
BUCHAREST - OTOPENI	325,594	2.07%	90,311	2.00%	
FRANKFURT	322,479	2.05%	133,898	2.97%	140.83%
MADRID	317,007	2.01%	42,513	0.94%	
LUTON	290,258	1.84%	27,701	0.61%	
HERAKLION	267,274	1.70%	85,732	1.90%	
RHODES-PARADISI	258,968	1.64%	86,540	1.92%	199.24%
ZURICH	253,908	1.61%	77,932	1.73%	
BERLIN BRANDENBURG INTL	242,698	1.54%	49,502	1.10%	





Int'l Accumulated Passenger Traffic

Distribution by First Destination

Destination	Accumulated 2022		Accumulated 2021		Rate of Change
	Passengers	Rate of Total	Passengers	Rate of Total	
MUNICH	234,469	1.49%	33,982	0.75%	
WARSAW	230,097	1.46%	41,801	0.92%	
MILAN-MALPENSA	230,029	1.46%	36,192	0.80%	
PRAGUE-RUZYNE	213,963	1.36%	82,194	1.82%	160.31%
BARCELONA	209,286	1.33%	22,258	0.49%	
BATUMI	208,523	1.32%	100,021	2.22%	108.47%
PARIS-ORLY	205,186	1.30%	34,538	0.76%	
TBILISI	199,533	1.26%	74,793	1.66%	166.78%
PAPHOS	197,178	1.25%	68,777	1.52%	186.69%
SOFIA	159,536	1.01%	46,255	1.02%	
TORONTO	147,884	0.94%	40,457	0.89%	
MIAMI INTERNATIONAL	145,168	0.92%	65,262	1.45%	122.43%
ABU DHABI	143,848	0.91%	7,688	0.17%	
BRUSSELS	136,358	0.86%	30,018	0.66%	
THESSALONIKI	129,850	0.82%	34,896	0.77%	
SAN FRANCISCO	110,592	0.70%	57,939	1.28%	90.87%
SHARM EL SHEIKH	107,996	0.68%	563	0.01%	
LISBON	107,146	0.68%	11,822	0.26%	
ADDIS ABABA	104,751	0.66%	38,279	0.85%	173.65%
KRAKOW	102,665	0.65%	14,430	0.32%	
GENEVA	95,962	0.61%	16,555	0.36%	
LOS ANGELES	90,135	0.57%	47,047	1.04%	91.58%





Int'l Accumulated Passenger Traffic

Distribution by First Destination

Destination	Accumulated 2022		Accumulated 2021		
	Passengers	Rate of Total	Passengers	Rate of Total	Rate of Change
BANGKOK INTL.-SUARNABHUM	85,443	0.54%	7,771	0.17%	
MOSCOW-DOMODEDOVO	83,189	0.52%	33,366	0.74%	149.32%
BERGAMO	81,947	0.52%	22,103	0.49%	
LONDON - GATWICK	80,862	0.51%	206		
BURGAS	80,015	0.50%	19,769	0.43%	
CHISINAU	78,880	0.50%	32,407	0.72%	143.40%
MARRAKESH	72,568	0.46%	5,416	0.12%	
DALAMAN	70,680	0.44%	9,554	0.21%	
NAPLES-CAPODICHINO	65,445	0.41%	3,472	0.07%	
NICE	60,811	0.38%	13,020	0.28%	
BAKU HEYDAR ALIYEV INT'L	58,880	0.37%	9,085	0.20%	
VARNA	57,690	0.36%	19,695	0.43%	192.91%
BOSTON-LOGAN INT	56,837	0.36%	3		
TIVAT	54,255	0.34%	24,774	0.55%	118.99%
VENICE	53,868	0.34%	46		
AMMAN (QUEEN ALIA INT'L)	52,908	0.33%	2,633	0.05%	
BRUSSELS - CHARLEROI	50,319	0.32%			
MARSEILLE	49,891	0.31%	8,856	0.19%	
CHICAGO - O'HARE	48,965	0.31%	25,213	0.56%	94.20%
VILNIUS INTL	46,868	0.29%	7,907	0.17%	
MIKONOS	45,283	0.28%	20,542	0.45%	120.44%
CORFU	42,933	0.27%	26,274	0.58%	63.40%





Int'l Accumulated Passenger Traffic

Distribution by First Destination

Destination	Accumulated 2022		Accumulated 2021		
	Passengers	Rate of Total	Passengers	Rate of Total	Rate of Change
WASHINGTON-DULLES	41,733	0.26%			
MANCHESTER	41,665	0.26%	7,891	0.17%	
DELHI	39,538	0.25%	6,608	0.14%	
LYON - SATOLAS	38,885	0.24%	7,656	0.17%	
CAIRO INTERNATIONAL	35,698	0.22%	1,197	0.02%	
KOS	34,776	0.22%	928	0.02%	
CASABLANCA-MOHAMMED V	34,431	0.21%	935	0.02%	
KIEV KYIV-BORISPOL	34,115	0.21%	188,358	4.18%	-81.88%
VILLAFRANCA-VERONA	33,999	0.21%	2,143	0.04%	
BASEL	33,593	0.21%	9,369	0.20%	
MONTREAL - DORVAL	33,271	0.21%	6,860	0.15%	
TASHKENT	33,236	0.21%	6,221	0.13%	
CLUJ NAPOCA	30,614	0.19%	7,212	0.16%	
PHUKET	30,190	0.19%	9,657	0.21%	
SANTORINI	28,030	0.17%	14,891	0.33%	88.23%
BADEN BADEN	26,838	0.17%	10,613	0.23%	152.87%
BOLOGNA-BORGO PANIGALE	26,752	0.17%	84		
CATANIA FONTANAROSSA	26,597	0.16%	2,674	0.05%	
TURIN	26,043	0.16%	25		
HELSINKI	25,852	0.16%	4,229	0.09%	
DUBAI AL MAKTOUM INT AP	25,237	0.16%	651	0.01%	
IASI	25,142	0.15%	3,613	0.08%	





Int'l Accumulated Passenger Traffic

Distribution by First Destination

Destination	Accumulated 2022		Accumulated 2021		Rate of Change
	Passengers	Rate of Total	Passengers	Rate of Total	
RIGA	24,019	0.15%	5,804	0.12%	
MAHE SEYCHELLES INTL	23,761	0.15%	18,055	0.40%	31.60%
GRENOBLE-SAUNT GEOIRS	23,098	0.14%			
COPENHAGEN KASTRUP	22,286	0.14%	4,486	0.09%	
JOHANNESBURG	22,225	0.14%	105		
MEMMINGEN	22,199	0.14%	8,936	0.19%	148.42%
BARI -PALESE MACCHIE	22,052	0.14%	1,115	0.02%	
BAHRAIN	21,971	0.13%	1,401	0.03%	
IZMIR-ADNAN MENDERES	21,940	0.13%	161		
STOCKHOLM-ARLANDA	21,166	0.13%	561	0.01%	
PODGORICA	21,044	0.13%	272		
DEBRECEN	21,021	0.13%	1,077	0.02%	
MINERALNYE VODY	20,974	0.13%	22		
MOSCOW	20,437	0.13%	42,358	0.94%	-51.75%
KHANIA-SOUDABAY	19,473	0.12%	18,747	0.41%	3.87%
BELGRADE	18,401	0.11%	10,267	0.22%	79.22%
ZAGREB	18,105	0.11%	249		
KATOWICE	17,491	0.11%	391		
LJUBLJANA	16,462	0.10%	2,334	0.05%	
DUSSELDORF	15,521	0.09%	108		
TREVISO	13,671	0.08%	10,762	0.23%	27.03%
MALTA	13,249	0.08%	129		





Int'l Accumulated Passenger Traffic

Distribution by First Destination

Destination	Accumulated 2022		Accumulated 2021		Rate of Change
	Passengers	Rate of Total	Passengers	Rate of Total	
HONG KONG INT'L	13,185	0.08%	2,927	0.06%	
SOCHI	12,273	0.07%	76		
PREVEZA	11,870	0.07%	3,867	0.08%	
SALZBURG	11,084	0.07%	1,116	0.02%	
KARPATOS	10,592	0.06%			
TRABZON	10,041	0.06%	6		
ROVANIEMI	9,572	0.06%			
RZESZOW-JASIONKA	8,585	0.05%	508	0.01%	
ZANZIBAR	6,755	0.04%	3,814	0.08%	77.11%
TOULOUSE	6,647	0.04%			
REYKJAVIK	6,638	0.04%	3,300	0.07%	101.15%
INNSBRUCK	6,017	0.03%	4		
ZAKYNTHOS	5,977	0.03%	9,521	0.21%	-37.22%
WARSAW- MODLIN	5,872	0.03%	113		
KILIMANJARO	5,612	0.03%	1,051	0.02%	
SUCEAVA-ROMANIA	5,277	0.03%			
MOSCOW-ZHUKOVSKY INTL AIR	5,237	0.03%			
ODESA	3,947	0.02%	19,846	0.44%	-80.11%
PALMA DE MALLORCA	3,672	0.02%	9		
BODRUM	3,626	0.02%	699	0.01%	
MINSK	3,298	0.02%	23,635	0.52%	-86.04%
OHRID	2,631	0.01%			





Int'l Accumulated Passenger Traffic

Distribution by First Destination

Destination	Accumulated 2022		Accumulated 2021		
	Passengers	Rate of Total	Passengers	Rate of Total	Rate of Change
ST. PETERSBURG	2,502	0.01%	3,740	0.08%	-33.10%
POZNAN	2,470	0.01%	91		
HAMBURG	2,395	0.01%	21		
COLOGNE-BONN	2,016	0.01%	72		
OTHERS	31,469	0.20%	44,183	0.98%	-28.77%
TOTAL	15,719,158		4,497,795		



Cargo Activity





Cargo Handling

Distribution by Transporter

Transporter	October 2022 (Ton)	October 2021 (Ton)	Rate of Change
Cargo on Passenger Aircrafts - Incoming	8,326	6,450	29.08%
Cargo on Passenger Aircrafts - Outgoing	5,805	5,711	1.64%
Total Cargo on Passenger Aircrafts	14,131	12,161	16.19%
Cargo on Cargo Aircrafts - Incoming	10,308	14,156	-27.18%
Cargo on Cargo Aircrafts - Outgoing	5,048	7,424	-32.00%
Total Cargo on Cargo Aircrafts	15,356	21,580	-28.84%
Total	29,487	33,741	-12.60%

Distribution by Months

Month	2022 (ton)			2021 (ton)			Rate of Change
	Cargo	Mail	Total	Cargo	Mail	Total	
January	30,381	567	30,948	28,571	632	29,203	5.97%
February	29,608	580	30,188	26,508	321	26,830	12.51%
March	33,710	625	34,335	31,396	546	31,942	7.49%
April	31,673	685	32,358	28,779	745	29,524	9.59%
May	31,540	683	32,223	29,512	544	30,056	7.20%
June	28,632	601	29,233	30,775	586	31,361	-6.78%
July	29,673	554	30,227	30,404	682	31,086	-2.76%
August	30,726	604	31,330	33,557	582	34,139	-8.22%
September	29,593	640	30,233	28,160	602	28,763	5.11%
October	28,740	747	29,487	33,037	704	33,741	-12.60%
Total	304,276	6,286	310,562	300,699	5,944	306,645	1.27%





Cargo Handling on Passenger Aircrafts

Distribution by Airline for October

		October 2022				October 2021				
Airline	Incoming Cargo (Ton)	Outgoing Cargo (Ton)	Cargo (Ton)	Rate of Total	Incoming Cargo (Ton)	Outgoing Cargo (Ton)	Cargo (Ton)	Rate of Total	Rate of Change	
LY EL AL ISRAEL AIRLINES	1,805	2,021	3,826	27.07%	1,203	1,475	2,677	22.01%	42.92%	
UA UNITED AIRLINES	838	896	1,735	12.27%	831	1,283	2,114	17.38%	-17.92%	
TK TURKISH AIRLINES	1,582	151	1,733	12.26%	1,159	136	1,294	10.64%	33.92%	
AF AIR FRANCE	520	400	920	6.51%	369	199	568	4.67%	61.97%	
AC AIR CANADA	371	300	671	4.74%	211	304	515	4.23%	30.29%	
BA BRITISH AIRWAYS PLC	233	430	664	4.69%	175	176	351	2.88%	89.17%	
AA AMERICAN AIRLINES	246	292	538	3.80%	292	445	736	6.05%	-26.90%	
EK EMIRATES	224	294	518	3.66%						
VS VIRGIN ATLANTIC AIRWAYS	325	162	487	3.44%	368	128	496	4.07%	-1.81%	
ET ETHIOPIAN AIRLINES	355	46	400	2.83%	208	146	354	2.91%	12.99%	
DL DELTA AIRLINES	165	158	323	2.28%	313	532	845	6.94%	-61.77%	
EY ETIHAD AIRWAYS	253	70	322	2.27%	100	111	211	1.73%	52.60%	
CX CATHAY PACIFIC AIRWAYS	191	120	311	2.20%	97	58	155	1.27%	100.64%	
UX AIR EUROPA Lineas Aereas	242	50	293	2.07%	55	26	81	0.66%		
IB IBERIA	202	42	244	1.72%	149	77	226	1.85%	7.96%	
PC PEGASUS AIRLINES	116	79	195	1.37%	70	51	121	0.99%	61.15%	
AZ ITALIA TRASPORTO AEREO	106	39	145	1.02%	1	4	5	0.04%		
AI AIR INDIA	80	58	138	0.97%	28	31	59	0.48%	133.89%	
LH LUFTHANSA	53	32	85	0.60%	36	18	54	0.44%	57.40%	
A3 AEGEAN AIRLINES	64	18	82	0.58%	33	4	38	0.31%	115.78%	
FZ FLYDUBAI	68	10	79	0.55%	99	14	113	0.92%	-30.08%	
LX SWISS INT'L AIRLINES	32	26	58	0.41%	463	279	742	6.10%	-92.18%	





Cargo Handling on Passenger Aircrafts

Distribution by Airline for October

		October 2022				October 2021				
Airline	Incoming Cargo (Ton)	Outgoing Cargo (Ton)	Cargo (Ton)	Rate of Total	Incoming Cargo (Ton)	Outgoing Cargo (Ton)	Cargo (Ton)	Rate of Total	Rate of Change	
LO LOT POLISH AIRLINES	34	6	39	0.27%	14	3	16	0.13%	143.75%	
HY UZBEKISTAN AIR	14	22	36	0.25%	7	13	21	0.17%	71.42%	
GF GULF AIR - BAHREIN	21	11	32	0.22%	6	2	8	0.06%		
OS AUSTRIAN AIRLINES	23	5	29	0.20%	10	12	22	0.18%	31.81%	
U8 TUS AIRWAYS	26	2	28	0.19%		1	1			
QS SMARTWINGS	26	1	27	0.19%	8	2	10	0.08%	170.00%	
HM AIR SEYCHELLES	23	1	24	0.16%	2		2	0.01%		
RO TAROM - RUMANIAN AIR TRAN	14	4	18	0.12%	8	3	11	0.09%	63.63%	
BT AIR BALTIC	11	5	17	0.12%	8	1	9	0.07%	88.88%	
SN BRUSSELS AIRLINES	14	2	16	0.11%	7	1	8	0.06%	100.00%	
AT ROYAL AIR MAROC	1	13	15	0.10%						
XC CORONDON AIRLINES	12	2	14	0.09%						
RJ ROYAL JORDANIAN	6	4	10	0.07%	3		3	0.02%		
TP AIR PORTUGAL	7	2	9	0.06%	3	6	9	0.07%		
QY EUROPEAN AIR TRANSPORT		8	8	0.05%						
OTHERS	21	21	42	0.29%	113	171	283	2.32%	-85.15%	
TOTAL	8,326	5,805	14,131		6,450	5,711	12,161		16.19%	





Accumulated Cargo Handling on Passengers Aircrafts

Distribution by Airline

		Accumulated 2022				Accumulated 2021				
Airline		Incoming Cargo (Ton)	Outgoing Cargo (Ton)	Cargo (Ton)	Rate of Total	Incoming Cargo (Ton)	Outgoing Cargo (Ton)	Cargo (Ton)	Rate of Total	Rate of Change
LY	EL AL ISRAEL AIRLINES	20,302	20,393	40,695	31.20%	8,566	11,560	20,125	25.78%	102.21%
UA	UNITED AIRLINES	7,720	9,218	16,938	12.98%	5,480	8,957	14,436	18.49%	17.33%
TK	TURKISH AIRLINES	12,251	2,293	14,545	11.15%	5,499	847	6,347	8.13%	129.16%
AF	AIR FRANCE	4,983	3,720	8,703	6.67%	2,212	1,117	3,330	4.26%	161.35%
AA	AMERICAN AIRLINES	3,032	3,952	6,984	5.35%	1,367	2,321	3,688	4.72%	89.37%
AC	AIR CANADA	2,198	2,726	4,924	3.77%	1,174	1,599	2,774	3.55%	77.50%
VS	VIRGIN ATLANTIC AIRWAYS	2,354	1,579	3,933	3.01%	1,943	1,024	2,967	3.80%	32.55%
DL	DELTA AIRLINES	1,728	1,963	3,690	2.82%	2,849	3,046	5,894	7.55%	-37.39%
BA	BRITISH AIRWAYS PLC	2,102	1,389	3,491	2.67%	1,206	1,223	2,429	3.11%	43.72%
ET	ETHIOPIAN AIRLINES	2,071	851	2,922	2.24%	1,870	1,177	3,046	3.90%	-4.07%
UX	AIR EUROPA Lineas Aereas	2,024	634	2,658	2.03%	109	88	197	0.25%	
IB	IBERIA	1,761	897	2,657	2.03%	1,093	534	1,627	2.08%	63.30%
EY	ETIHAD AIRWAYS	1,538	966	2,504	1.92%	680	669	1,350	1.72%	85.48%
EK	EMIRATES	1,182	1,321	2,503	1.91%					
PC	PEGASUS AIRLINES	949	822	1,771	1.35%	580	343	923	1.18%	91.87%
LX	SWISS INT'L AIRLINES	1,079	636	1,716	1.31%	2,616	1,480	4,096	5.24%	-58.10%
AI	AIR INDIA	830	794	1,624	1.24%	252	240	492	0.63%	
CX	CATHAY PACIFIC AIRWAYS	602	416	1,018	0.78%	567	252	819	1.04%	24.29%
FZ	FLYDUBAI	845	141	986	0.75%	422	68	490	0.62%	101.22%
LH	LUFTHANSA	496	344	840	0.64%	236	101	337	0.43%	149.25%
A3	AEGEAN AIRLINES	522	127	649	0.49%	121	46	168	0.21%	
AZ	ITALIA TRASPORTO AEREO	305	336	641	0.49%	8	29	37	0.04%	





Accumulated Cargo Handling on Passengers Aircrafts

Distribution by Airline

		Accumulated 2022				Accumulated 2021				
Airline		Incoming Cargo (Ton)	Outgoing Cargo (Ton)	Cargo (Ton)	Rate of Total	Incoming Cargo (Ton)	Outgoing Cargo (Ton)	Cargo (Ton)	Rate of Total	Rate of Change
LO	LOT POLISH AIRLINES	307	123	430	0.32%	90	11	101	0.12%	
GF	GULF AIR - BAHREIN	181	103	284	0.21%	6	2	8	0.01%	
HY	UZBEKISTAN AIR	108	169	277	0.21%	27	35	61	0.07%	
OS	AUSTRIAN AIRLINES	175	73	248	0.19%	65	38	103	0.13%	140.77%
QS	SMARTWINGS	199	21	220	0.16%	35	12	47	0.06%	
RO	TAROM - RUMANIAN AIR TRAN	137	48	185	0.14%	58	24	82	0.10%	125.60%
SN	BRUSSELS AIRLINES	163	17	179	0.13%	24	3	27	0.03%	
XC	CORONDON AIRLINES	144	15	159	0.12%					
AT	ROYAL AIR MAROC	91	60	150	0.11%					
HM	AIR SEYCHELLES	127	9	136	0.10%	90	1	91	0.11%	49.45%
BT	AIR BALTIC	99	27	127	0.09%	32	11	43	0.05%	195.34%
U8	TUS AIRWAYS	98	16	114	0.08%	1	2	3		
TP	AIR PORTUGAL	69	29	98	0.07%	4	10	14	0.01%	
RJ	ROYAL JORDANIAN	48	15	63	0.04%	6		7		
QY	EUROPEAN AIR TRANSPORT		28	28	0.02%					
	OTHERS	586	718	1,304	1.00%	817	1,068	1,884	2.41%	-30.78%
	TOTAL	73,405	56,989	130,394		40,106	37,937	78,043		67.07%





Cargo Handling on Cargo Aircrafts

Distribution by Airlines October

		October 2022				October 2021				
Airline		Incoming Cargo (Ton)	Outgoing Cargo (Ton)	Cargo (Ton)	Rate of Total	Incoming Cargo (Ton)	Outgoing Cargo (Ton)	Cargo (Ton)	Rate of Total	Rate of Change
ICL	C.A.L ISRAELI CARGO	1,259	911	2,170	14.13%	3,620	1,245	4,865	22.54%	-55.39%
MNB	MNG CARGO AIRLINES	1,781	159	1,941	12.64%	1,181	232	1,413	6.54%	37.36%
QY	EUROPEAN AIR TRANSPORT	1,222	681	1,903	12.39%	1,197	796	1,993	9.23%	-4.51%
CHG	CHALLENGE AIRLINES	1,240	477	1,717	11.18%					
AZG	SILK WAY WEST AIRLINES	477	670	1,147	7.46%	589	642	1,231	5.70%	-6.82%
FX	FEDERAL EXPRESS	669	396	1,065	6.93%	505	335	840	3.89%	26.78%
LY	EL AL ISRAEL AIRLINES	613	346	959	6.24%	2,771	1,844	4,615	21.38%	-79.21%
LH	LUFTHANSA	467	436	903	5.88%	428	460	887	4.11%	1.80%
TK	TURKISH AIRLINES	602	273	875	5.69%	1,451	304	1,755	8.13%	-50.14%
5X	UPS AIRLINES	354	304	658	4.28%					
SMF	SMEA AIR LINE	380	272	652	4.24%					
9T	ACT AIRLINES Inc.	503		503	3.27%					
3U	SICHUAN AIRLINES	388	80	468	3.04%	62	27	89	0.41%	
ET	ETHIOPIAN AIRLINES	239	16	255	1.66%	438	93	531	2.46%	-51.97%
M4	POSTE AIR CARGO	50	14	64	0.41%	106	35	141	0.65%	-54.60%
CMS	CAMEX AIRLINES	39		39	0.25%					
CX	CATHAY PACIFIC AIRWAYS		11	11	0.07%	573	328	901	4.17%	-98.77%
	OTHERS	23	1	24	0.15%	1,236	1,083	2,318	10.74%	-98.96%
	TOTAL	10,308	5,048	15,356		14,156	7,424	21,580		-28.84%





Accumulated Cargo Handling on Cargo Aircrafts

Distribution by Airline

		Accumulated 2022				Accumulated 2021				
Airline		Incoming Cargo (Ton)	Outgoing Cargo (Ton)	Cargo (Ton)	Rate of Total	Incoming Cargo (Ton)	Outgoing Cargo (Ton)	Cargo (Ton)	Rate of Total	Rate of Change
ICL	C.A.L ISRAELI CARGO	22,401	10,752	33,153	18.40%	34,876	18,472	53,347	23.33%	-37.85%
LY	EL AL ISRAEL AIRLINES	12,315	8,822	21,138	11.73%	25,460	15,310	40,770	17.83%	-48.15%
QY	EUROPEAN AIR TRANSPORT	12,867	7,943	20,810	11.55%	11,626	8,083	19,710	8.62%	5.58%
MNB	MNG CARGO AIRLINES	13,059	1,237	14,296	7.93%	12,779	2,402	15,181	6.64%	-5.82%
AZG	SILK WAY WEST AIRLINES	6,036	7,142	13,178	7.31%	6,475	7,424	13,898	6.07%	-5.18%
TK	TURKISH AIRLINES	8,771	3,322	12,093	6.71%	22,510	5,007	27,517	12.03%	-56.05%
FX	FEDERAL EXPRESS	7,124	4,018	11,142	6.18%	5,094	3,385	8,479	3.70%	31.40%
LH	LUFTHANSA	4,032	3,303	7,335	4.07%	5,759	4,553	10,312	4.51%	-28.86%
5X	UPS AIRLINES	4,178	3,016	7,194	3.99%					
3U	SICHUAN AIRLINES	4,275	1,095	5,370	2.98%	980	387	1,367	0.59%	
9T	ACT AIRLINES Inc.	4,535	26	4,561	2.53%	103	46	149	0.06%	
CX	CATHAY PACIFIC AIRWAYS	1,496	1,098	2,594	1.43%	3,605	2,319	5,924	2.59%	-56.21%
ET	ETHIOPIAN AIRLINES	1,873	455	2,328	1.29%	1,460	654	2,114	0.92%	10.12%
CHG	CHALLENGE AIRLINES	1,240	668	1,908	1.05%					
M4	POSTE AIR CARGO	1,179	405	1,584	0.87%	479	183	662	0.28%	139.27%
SMF	SMEA AIR LINE	380	272	652	0.36%					
CMS	CAMEX AIRLINES	39		39	0.02%					
	OTHERS	12,130	8,663	20,793	11.54%	18,760	10,411	29,171	12.76%	-28.72%
	TOTAL	117,931	62,238	180,168		149,965	78,635	228,602		-21.18%





Cargo Handling on Cargo Aircrafts

Distribution by Countries for October

Country	October 2022				October 2021				
	Incoming Cargo (Ton)	Outgoing Cargo (Ton)	Cargo (Ton)	Rate of Total	Incoming Cargo (Ton)	Outgoing Cargo (Ton)	Cargo (Ton)	Rate of Total	Rate of Change
BELGIUM	2,538	2,084	4,622	30.09%	3,848	3,214	7,062	32.72%	-34.55%
GERMANY	1,971	1,147	3,118	20.30%	2,465	834	3,299	15.28%	-5.48%
TURKEY	2,578	420	2,998	19.52%	1,944	536	2,480	11.49%	20.88%
AZERBAIJAN	477	670	1,147	7.46%	589	659	1,248	5.78%	-8.09%
NORWAY	1,060		1,060	6.90%	1,020		1,020	4.72%	3.92%
CHINA	388	92	480	3.12%	2,512	696	3,207	14.86%	-85.03%
CYPRUS	449	24	473	3.08%	313	58	372	1.72%	27.15%
FRANCE	289	84	373	2.42%	103	243	346	1.60%	7.80%
EGYPT	73	279	352	2.29%		460	460	2.13%	-23.47%
ETHIOPIA	239	16	255	1.66%	438	93	531	2.46%	-51.97%
AUSTRIA		140	140	0.91%					
ITALY	69	14	83	0.54%	112	40	152	0.70%	-45.39%
INDIA	44	39	82	0.53%	151	181	332	1.53%	-75.30%
GREECE	69		69	0.44%					
GEORGIA	39		39	0.25%					
UNITED ARAB EMIRATES		38	38	0.24%	462	287	749	3.47%	-94.92%
SPAIN	21		21	0.13%	51	25	75	0.34%	-72.00%
OTHERS	5	1	6	0.03%	148	98	246	1.13%	-97.56%
TOTAL	10,308	5,048	15,356		14,156	7,424	21,580		-28.84%





Accumulated Cargo Handling on Cargo Aircrafts

Distribution by Countries

Countries	Accumulated 2022				Accumulated 2021				
	Incoming Cargo (Ton)	Outgoing Cargo (Ton)	Cargo (Ton)	Rate of Total	Incoming Cargo (Ton)	Outgoing Cargo (Ton)	Cargo (Ton)	Rate of Total	Rate of Change
BELGIUM	32,169	25,718	57,887	32.12%	36,914	33,441	70,355	30.77%	-17.72%
GERMANY	20,602	11,939	32,541	18.06%	24,955	9,185	34,139	14.93%	-4.68%
TURKEY	22,681	4,328	27,010	14.99%	30,255	7,580	37,835	16.55%	-28.61%
CHINA	11,810	3,137	14,947	8.29%	24,713	6,032	30,745	13.44%	-51.38%
AZERBAIJAN	6,036	7,166	13,202	7.32%	6,476	7,372	13,848	6.05%	-4.66%
NORWAY	9,274	1	9,275	5.14%	9,264	51	9,314	4.07%	-0.41%
FRANCE	2,948	1,275	4,224	2.34%	1,004	2,119	3,122	1.36%	35.29%
CYPRUS	3,389	579	3,969	2.20%	3,376	724	4,100	1.79%	-3.19%
UNITED ARAB EMIRATES	2,036	1,775	3,811	2.11%	2,295	1,911	4,206	1.83%	-9.39%
EGYPT	76	2,558	2,633	1.46%		3,592	3,592	1.57%	-26.69%
ETHIOPIA	1,798	455	2,253	1.25%	1,460	654	2,114	0.92%	6.57%
ITALY	1,195	406	1,601	0.88%	675	281	956	0.41%	67.46%
AUSTRIA	484	972	1,456	0.80%	413		413	0.18%	
SPAIN	533	6	539	0.29%	1,632	362	1,993	0.87%	-72.95%
INDIA	260	129	389	0.21%	795	381	1,176	0.51%	-66.92%
GEORGIA	275	21	296	0.16%	140	14	153	0.06%	93.46%
GREECE	100	8	108	0.05%	56	37	93	0.04%	16.12%
OTHERS	2,263	1,764	4,027	2.23%	5,545	4,900	10,444	4.56%	-61.44%
TOTAL	117,931	62,238	180,168		149,965	78,635	228,602		-21.18%



Domestic Activity

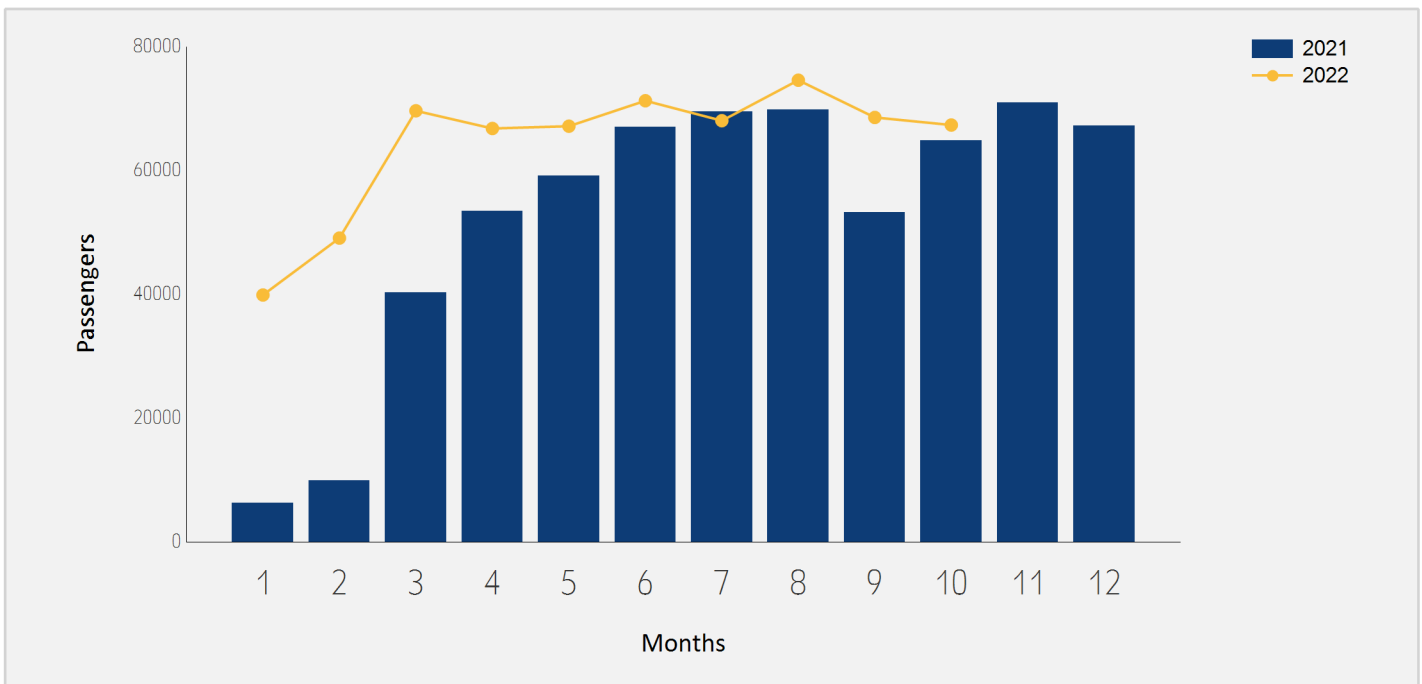




Domestic Passenger Traffic

Distribution by Months

Month	2022	2021	Rate of Change
January	39,890	6,294	
February	49,086	9,936	
March	69,648	40,263	72.98%
April	66,790	53,421	25.02%
May	67,161	59,126	13.58%
June	71,273	67,065	6.27%
July	68,047	69,490	-2.07%
August	74,592	69,828	6.82%
September	68,573	53,261	28.74%
October	67,353	64,886	3.80%
Total	642,413	493,570	30.15%

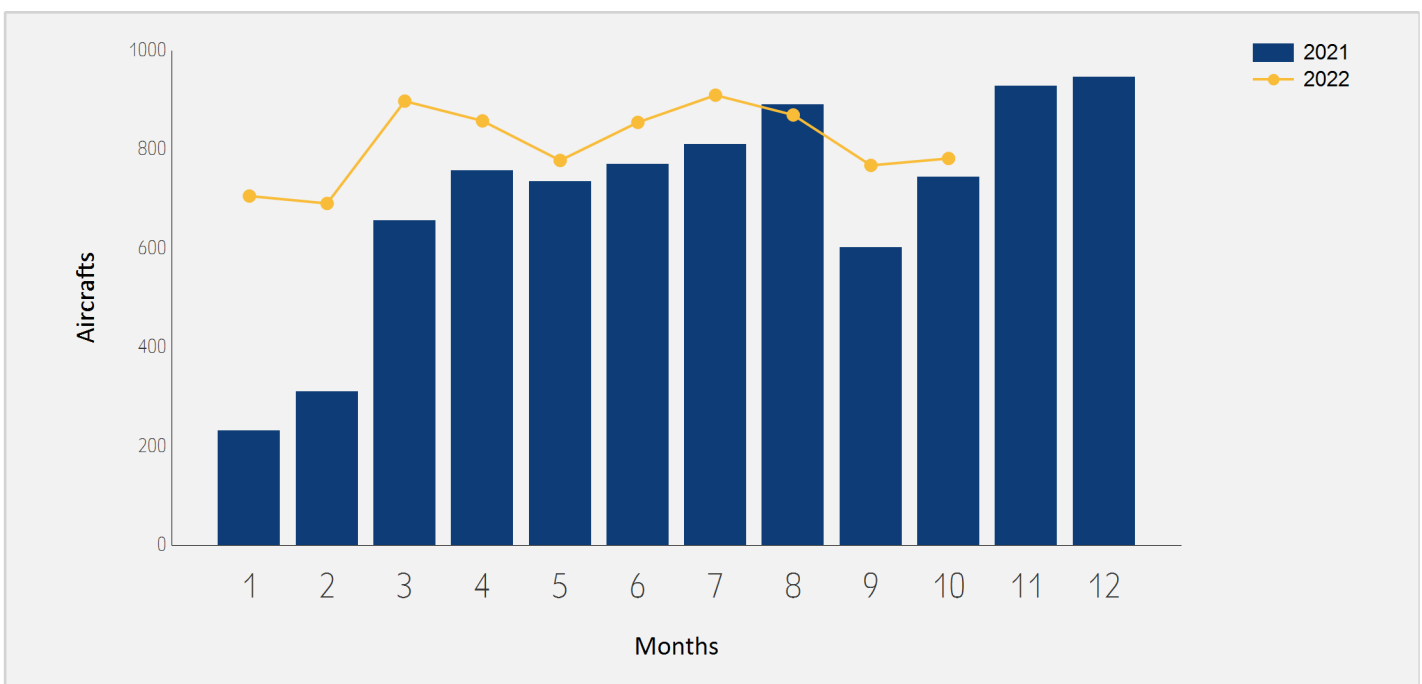




Domestic Aircrafts Traffic

Distribution by Months

Month	2022	2021	Rate of Change
January	706	231	
February	691	311	122.18%
March	898	656	36.89%
April	858	757	13.34%
May	778	735	5.85%
June	855	770	11.03%
July	910	811	12.20%
August	870	891	-2.35%
September	768	602	27.57%
October	782	745	4.96%
Total	8,116	6,509	24.68%





Domestic Passengers Traffic

Distribution by Airlines for October

		October 2022		October 2021		
Airline		Passengers	Rate of Total	Passengers	Rate of Total	Rate of Change
IZ	ARKIA ISRAELI AIRLINES	42,941	63.75%	39,787	61.31%	7.92%
6H	ISRAIR AIRLINES	24,342	36.14%	24,897	38.37%	-2.22%
	OTHERS	70	0.10%	202	0.31%	-65.34%
TOTAL		67,353		64,886		3.80%

Accumulated Domestic Passengers Traffic

Distribution by Airlines

		Accumulated 2022		Accumulated 2021		
Airline		Passengers	Rate of Total	Passengers	Rate of Total	Rate of Change
IZ	ARKIA ISRAELI AIRLINES	395,152	61.51%	282,632	57.26%	39.81%
6H	ISRAIR AIRLINES	246,311	38.34%	210,037	42.55%	17.27%
	OTHERS	950	0.14%	901	0.18%	5.43%
TOTAL		642,413		493,570		30.15%





Domestic Passenger Traffic

Distribution by Destinations for October

Destination	October 2022		October 2021		Rate of Change
	Passengers	Rate of Total	Passengers	Rate of Total	
RAMON	67,043	99.53%	64,442	99.31%	4.03%
OTHERS	310	0.46%	444	0.68%	-30.18%
TOTAL	67,353		64,886		3.80%

Accumulated Domestic Passenger Traffic

Distribution by Destinations

Destination	Accumulated 2022		Accumulated 2021		Rate of Change
	Passengers	Rate of Total	Passengers	Rate of Total	
RAMON	638,474	99.38%	492,317	99.74%	29.68%
OTHERS	3,939	0.61%	1,253	0.25%	
TOTAL	642,413		493,570		30.15%

