

# Monthly Report

Ben Gurion International Airport

August 2021



# Israel Airport Authority

## Ben Gurion International Airport

### Produced by the Industry & Management Department

**This report is protected by copyright and is the exclusive property of the Israel Airports Authority.**

**It must be emphasized that the data in the report are based on the reports of the airlines, and received under their responsibility.**

**The information is intended for personal use, and therefore may not be quoted or passed on to any third party without written permission from the Israel Airports Authority.**

**In addition, no commercial use may be made of this report.**

#### **Edit Yehoshua**

Activity Coordinator

Tel. +972-3-9752017

Email: [edity@iaa.gov.il](mailto:edity@iaa.gov.il)

#### **Rachel Lehava**

Manager, Industrial & Management Dep.

Tel. +972-3-9752019

Email: [rachelle@iaa.gov.il](mailto:rachelle@iaa.gov.il)

#### **Yossi Tzemach**

Head, Industrial & Management Dep.

Tel. +972-3-9752020

Email: [yossiz@iaa.gov.il](mailto:yossiz@iaa.gov.il)



Dear friends and partners,

I hereby respectfully submit for your review a report summarizing the aviation activity at Ben - Gurion International Airport in August 2021.

During the month, a total of 730,428 passengers on 8,161 international and domestic flights passed through Ben- Gurion Airport.

International passenger traffic in August totaled 660,591 passengers.

International aircraft traffic totaled 7,269 flights.

International passenger traffic at Terminal 3 this month totaled 647,735 passengers.

Passengers on International flights from Terminal 1, totaled 12,856.

On domestic flights 69,837 passengers passed through Ben- Gurion Airport this month, compared with 37,477 in August 2020, an increase of 86.34%.

Israeli airlines carried 202,624 passengers in this month, 30.67% of all travelers passing through Ben - Gurion Airport.

The airlines which contributed the most to the increase of passenger traffic this month are: EL AL ISRAEL AIRLINES, RYANAIR and WIZZAIR.

The Destination with the highest volume of activity was NEW YORK - J.F.KENNEDY with a total of 55,600 passengers to and from.

The country with the highest volume of activity was the UNITED STATES, with 137,313 passengers, constituting 20.78% of all activity.

The Countries which contributed the most to the increase of passenger traffic this month are: UNITED STATES, GREECE, AUSTRIA.

Cargo transportation this month stood at 34,651 tons and reflects an increase of 40.18% compared to August 2020. 11,672 tons were transported in passenger aircraft and 22,979 tons in cargo aircraft.

Below you will find additional tables providing details about movements of aircraft, passengers and cargo at Ben - Gurion International Airport.

Sincerely yours,  
**Shmuel Zakay**  
Managing Director,  
Ben-Gurion International Airport



# Content



## Aviation Activity

|                                |       |
|--------------------------------|-------|
| Aviation Activity Summary      | 1     |
| International Activity Summary | 2 - 4 |
| Domestic Activity Summary      | 5     |



## International Activity

|                                   |         |
|-----------------------------------|---------|
| Distribution By Months            | 7 - 8   |
| Distribution By Airlines          | 9 - 17  |
| Distribution By Countries         | 18 - 23 |
| Distribution By First Destination | 24 - 37 |



## Cargo Activity

|                             |         |
|-----------------------------|---------|
| Distribution by Transporter | 39      |
| Distribution By Months      | 39      |
| Distribution By Airlines    | 40 - 44 |
| Distribution By Countries   | 45 - 47 |



## Domestic Activity

|                              |         |
|------------------------------|---------|
| Distribution By Months       | 49 - 50 |
| Distribution By Airlines     | 51      |
| Distribution By Destinations | 52      |





# Passengers and Aircrafts

## Aviation Activity at Ben Gurion International Airport

### International Activity

|                         | Current Month  |                |                | Accumulated Since the beginning of the year |                  |                |
|-------------------------|----------------|----------------|----------------|---|------------------|----------------|
|                         | August 2021    | August 2020    | Rate Of Change | 2021  | 2020             | Rate Of Change |
| Incoming Aircrafts      | 3,621          | 1,172          |                | 18,552                                      | 18,100           | 2.49%          |
| Outgoing Aircrafts      | 3,648          | 1,156          |                | 18,550                                      | 18,075           | 2.62%          |
| <b>Total Aircrafts</b>  | <b>7,269</b>   | <b>2,328</b>   |                | <b>37,102</b>                               | <b>36,175</b>    | <b>2.56%</b>   |
| Incoming Passengers     | 354,161        | 62,421         |                | 1,461,422                                   | 1,856,804        | <b>-21.29%</b> |
| Outgoing Passengers     | 306,430        | 63,934         |                | 1,512,502                                   | 1,849,862        | <b>-18.23%</b> |
| Transit Passengers      | 1              |                |                | 131   | 1,982            | <b>-93.39%</b> |
| <b>Total Passengers</b> | <b>660,591</b> | <b>126,355</b> |                | <b>2,973,924</b>                            | <b>3,706,666</b> | <b>-19.76%</b> |

### Domestic Activity

|            | Current Month |             |                | Accumulated Since the beginning of the year |         |                |
|------------|---------------|-------------|----------------|---|---------|----------------|
|            | August 2021   | August 2020 | Rate Of Change | 2021  | 2020    | Rate Of Change |
| Aircrafts  | 892           | 543         | 64.27%         | 5,161                                       | 4,041   | 27.71%         |
| Passengers | 69,837        | 37,477      | 86.34%         | 375,432                                     | 273,402 | 37.31%         |

### International and Domestic Activity Summary

|            | Current Month |             |                | Accumulated Since the beginning of the year |           |                |
|------------|---------------|-------------|----------------|---|-----------|----------------|
|            | August 2021   | August 2020 | Rate Of Change | 2021  | 2020      | Rate Of Change |
| Aircrafts  | 8,161         | 2,871       | 184.25%        | 42,263                                      | 40,216    | 5.09%          |
| Passengers | 730,428       | 163,832     |                | 3,349,356                                   | 3,980,068 | <b>-15.84%</b> |





# Passengers and Aircrafts

## Int'l Aviation Activity at Ben Gurion International Airport by Terminal

### Terminal 3

|                         | Current Month  |                |                | Accumulated Since the beginning of the year |                  |                |
|-------------------------|----------------|----------------|----------------|---|------------------|----------------|
|                         | August 2021    | August 2020    | Rate of Change | 2021  | 2020             | Rate of Change |
| Incoming Aircrafts      | 3,464          | 1,172          | 195.56%        | 18,330                                      | 18,100           | 1.27%          |
| Outgoing Aircrafts      | 3,647          | 1,156          |                | 18,389                                      | 15,972           | 15.13%         |
| <b>Total Aircrafts</b>  | <b>7,111</b>   | <b>2,328</b>   |                | <b>36,719</b>                               | <b>34,072</b>    | <b>7.76%</b>   |
| Incoming Passengers     | 341,423        | 62,421         |                | 1,442,931                                   | 1,856,804        | -22.28%        |
| Outgoing Passengers     | 306,312        | 63,934         |                | 1,502,224                                   | 1,553,426        | -3.29%         |
| Transit Passengers      | 1              |                |                | 131   | 1,982            | -93.39%        |
| <b>Total Passengers</b> | <b>647,735</b> | <b>126,355</b> |                | <b>2,945,155</b>                            | <b>3,410,230</b> | <b>-13.63%</b> |

### Terminal 1

|                         | Current Month |             |                | Accumulated Since the beginning of the year |                |                |
|-------------------------|---------------|-------------|----------------|---|----------------|----------------|
|                         | August 2021   | August 2020 | Rate of Change | 2021  | 2020           | Rate of Change |
| Incoming Aircrafts      | 157           |             |                | 222   |                |                |
| Outgoing Aircrafts      | 1             |             |                | 161   | 2,103          | -92.34%        |
| <b>Total Aircrafts</b>  | <b>158</b>    |             |                | <b>383</b>                                  | <b>2,103</b>   | <b>-81.78%</b> |
| Incoming Passengers     | 12,738        |             |                | 18,491                                      |                |                |
| Outgoing Passengers     | 118           |             |                | 10,278                                      | 296,436        | -96.53%        |
| <b>Total Passengers</b> | <b>12,856</b> |             |                | <b>28,769</b>                               | <b>296,436</b> | <b>-90.29%</b> |





# Passengers and Aircrafts

## Int'l Aviation Activity at Ben Gurion International Airport by Flight Type

### Schedule and Charter Flights

|                         | Current Month  |                |                | Accumulated Since the beginning of the year |                  |                |
|-------------------------|----------------|----------------|----------------|---|------------------|----------------|
|                         | August 2021    | August 2020    | Rate of Change | 2021  | 2020             | Rate of Change |
| Incoming Aircrafts      | 2,850          | 548            |                | 12,417                                      | 13,697           | -9.34%         |
| Outgoing Aircrafts      | 2,872          | 543            |                | 12,503                                      | 13,839           | -9.65%         |
| <b>Total Aircrafts</b>  | <b>5,722</b>   | <b>1,091</b>   |                | <b>24,920</b>                               | <b>27,536</b>    | <b>-9.50%</b>  |
| Incoming Passengers     | 352,609        | 61,224         |                | 1,451,595                                   | 1,851,757        | -21.60%        |
| Outgoing Passengers     | 305,163        | 62,674         |                | 1,502,872                                   | 1,844,462        | -18.51%        |
| Transit Passengers      | 1              |                |                | 128   | 1,982            | -93.54%        |
| <b>Total Passengers</b> | <b>657,772</b> | <b>123,898</b> |                | <b>2,954,467</b>                            | <b>3,696,219</b> | <b>-20.06%</b> |

### Private Flights

|                         | Current Month |              |                | Accumulated Since the beginning of the year |              |                |
|-------------------------|---------------|--------------|----------------|---|--------------|----------------|
|                         | August 2021   | August 2020  | Rate of Change | 2021  | 2020         | Rate of Change |
| Incoming Aircrafts      | 366           | 296          | 23.64%         | 2,724                                       | 1,379        | 97.53%         |
| Outgoing Aircrafts      | 373           | 286          | 30.41%         | 2,687                                       | 1,374        | 95.56%         |
| <b>Total Aircrafts</b>  | <b>739</b>    | <b>582</b>   | <b>26.97%</b>  | <b>5,411</b>                                | <b>2,753</b> | <b>96.54%</b>  |
| Incoming Passengers     | 1,329         | 1,101        | 20.70%         | 8,487                                       | 3,560        | 138.39%        |
| Outgoing Passengers     | 1,134         | 1,064        | 6.57%          | 8,381                                       | 3,890        | 115.44%        |
| <b>Total Passengers</b> | <b>2,463</b>  | <b>2,165</b> | <b>13.76%</b>  | <b>16,868</b>                               | <b>7,450</b> | <b>126.41%</b> |





# Passengers and Aircrafts

## Int'l Aviation Activity at Ben Gurion International Airport by Flight Type

### Cargo Flights

|                         | Current Month |             |                | Accumulated Since the beginning of the year |              |                |
|-------------------------|---------------|-------------|----------------|---|--------------|----------------|
|                         | August 2021   | August 2020 | Rate of Change | 2021  | 2020         | Rate of Change |
| Incoming Aircrafts      | 389           | 306         | 27.12%         | 3,213                                       | 2,873        | 11.83%         |
| Outgoing Aircrafts      | 384           | 307         | 25.08%         | 3,167                                       | 2,706        | 17.03%         |
| <b>Total Aircrafts</b>  | <b>773</b>    | <b>613</b>  | <b>26.10%</b>  | <b>6,380</b>                                | <b>5,579</b> | <b>14.35%</b>  |
| Incoming Passengers     | 19            | 6           |                | 104   | 220          | -52.72%        |
| Outgoing Passengers     | 18            | 37          | -51.35%        | 202   | 334          | -39.52%        |
| <b>Total Passengers</b> | <b>37</b>     | <b>43</b>   | <b>-13.95%</b> | <b>306</b>                                  | <b>554</b>   | <b>-44.76%</b> |

### Other Flights

|                         | Current Month |             |                | Accumulated Since the beginning of the year |              |                |
|-------------------------|---------------|-------------|----------------|---|--------------|----------------|
|                         | August 2021   | August 2020 | Rate of Change | 2021  | 2020         | Rate of Change |
| Incoming Aircrafts      | 16            | 22          | -27.27%        | 198   | 151          | 31.12%         |
| Outgoing Aircrafts      | 19            | 20          | -5.00%         | 193   | 156          | 23.71%         |
| <b>Total Aircrafts</b>  | <b>35</b>     | <b>42</b>   | <b>-16.66%</b> | <b>391</b>                                  | <b>307</b>   | <b>27.36%</b>  |
| Incoming Passengers     | 204           | 90          | 126.66%        | 1,236                                       | 1,267        | -2.44%         |
| Outgoing Passengers     | 115           | 159         | -27.67%        | 1,047                                       | 1,176        | -10.96%        |
| <b>Total Passengers</b> | <b>319</b>    | <b>249</b>  | <b>28.11%</b>  | <b>2,283</b>                                | <b>2,443</b> | <b>-6.54%</b>  |







# Passengers and Aircrafts

## Domestic Aviation Activity at Ben Gurion International Airport by Flight Type

### Schedule Flights

|            | Current Month |             |                | Accumulated Since the beginning of the year |         |                |
|------------|---------------|-------------|----------------|---|---------|----------------|
|            | August 2021   | August 2020 | Rate of Change | 2021  | 2020    | Rate of Change |
| Aircrafts  | 783           | 363         | 115.70%        | 4,272                                       | 3,105   | 37.58%         |
| Passengers | 69,630        | 37,364      | 86.35%         | 374,392                                     | 272,861 | 37.20%         |

### Private Flights

|            | Current Month |             |                | Accumulated Since the beginning of the year |      |                |
|------------|---------------|-------------|----------------|---|------|----------------|
|            | August 2021   | August 2020 | Rate of Change | 2021  | 2020 | Rate of Change |
| Aircrafts  | 50            | 102         | -50.98%        | 502   | 426  | 17.84%         |
| Passengers | 97            | 107         | -9.34%         | 453   | 362  | 25.13%         |

### Other Flights

|            | Current Month |             |                | Accumulated Since the beginning of the year |      |                |
|------------|---------------|-------------|----------------|---|------|----------------|
|            | August 2021   | August 2020 | Rate of Change | 2021  | 2020 | Rate of Change |
| Aircrafts  | 59            | 78          | -24.35%        | 387   | 510  | -24.11%        |
| Passengers | 110           | 6           |                | 587   | 179  |                |



# International Activity

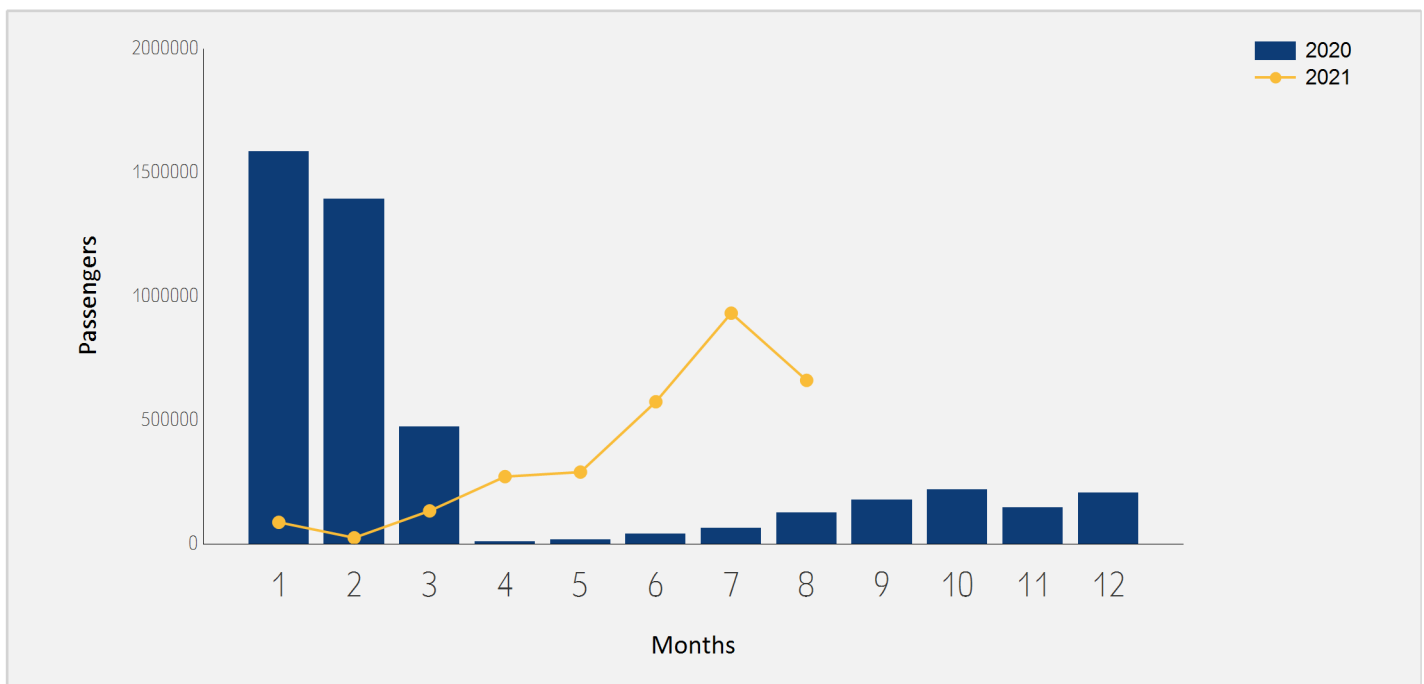




# International Passenger Traffic

## Distribution by Months

| Months       | 2021             | 2020             | Rate of Change |
|--------------|------------------|------------------|----------------|
| January      | 87,213           | 1,584,027        | -94.49%        |
| February     | 24,770           | 1,391,803        | -98.22%        |
| March        | 133,342          | 471,907          | -71.74%        |
| April        | 271,760          | 9,377            |                |
| May          | 290,102          | 18,225           |                |
| June         | 574,122          | 40,970           |                |
| July         | 932,024          | 64,002           |                |
| August       | 660,591          | 126,355          |                |
| <b>Total</b> | <b>2,973,924</b> | <b>3,706,666</b> | <b>-19.76%</b> |

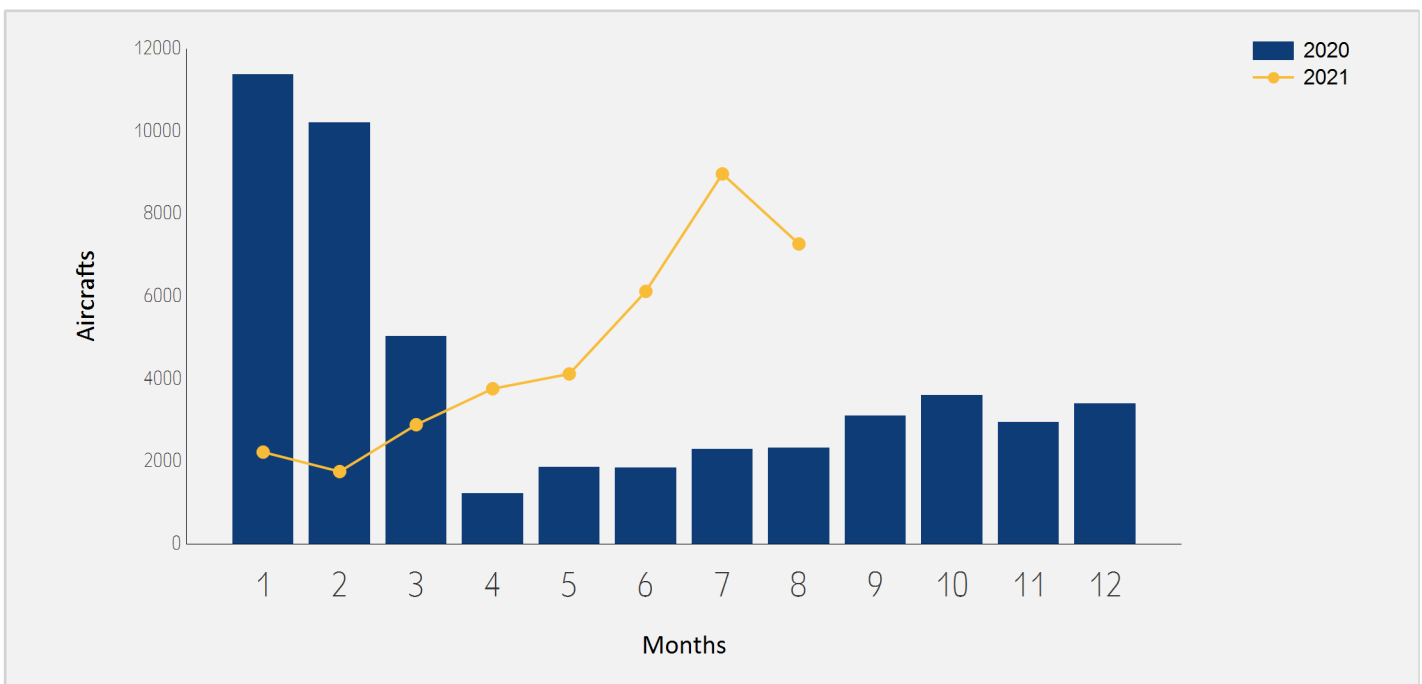




# International Aircraft Traffic

## Distribution by Months

| Months       | 2021          | 2020          | Rate of Change |
|--------------|---------------|---------------|----------------|
| January      | 2,225         | 11,374        | -80.43%        |
| February     | 1,753         | 10,207        | -82.82%        |
| March        | 2,888         | 5,038         | -42.67%        |
| April        | 3,761         | 1,225         |                |
| May          | 4,119         | 1,863         | 121.09%        |
| June         | 6,120         | 1,849         |                |
| July         | 8,967         | 2,291         |                |
| August       | 7,269         | 2,328         |                |
| <b>Total</b> | <b>37,102</b> | <b>36,175</b> | <b>2.56%</b>   |





# International Passenger Traffic

## Distribution by Airline for August

|         |                        | August 2021 |               | August 2020 |               |                |
|---------|------------------------|-------------|---------------|-------------|---------------|----------------|
| Airline |                        | Passengers  | Rate of Total | Passengers  | Rate of Total | Rate of Change |
| LY      | EL AL ISRAEL AIRLINES  | 157,233     | 23.80%        | 94          | 0.07%         |                |
| FR      | RYANAIR                | 48,207      | 7.29%         |             |               |                |
| W6      | WIZZAIR                | 44,056      | 6.66%         | 3,150       | 2.49%         |                |
| UA      | UNITED AIRLINES        | 43,975      | 6.65%         | 19,749      | 15.62%        | 122.66%        |
| PS      | UKRAINE INTL AIR       | 29,027      | 4.39%         | 7,821       | 6.18%         |                |
| EZY     | EASYJET                | 27,268      | 4.12%         | 3,640       | 2.88%         |                |
| TK      | TURKISH AIRLINES       | 22,788      | 3.44%         | 21,912      | 17.34%        | 3.99%          |
| 6H      | ISRAIR AIRLINES        | 22,714      | 3.43%         | 9,338       | 7.39%         | 143.24%        |
| LH      | LUFTHANSA              | 22,309      | 3.37%         | 9,288       | 7.35%         | 140.19%        |
| IZ      | ARKIA ISRAELI AIRLINES | 22,157      | 3.35%         | 35          | 0.02%         |                |
| DL      | DELTA AIRLINES         | 20,481      | 3.10%         | 7,381       | 5.84%         | 177.48%        |
| AA      | AMERICAN AIRLINES      | 17,000      | 2.57%         |             |               |                |
| OS      | AUSTRIAN AIRLINES      | 15,867      | 2.40%         |             |               |                |
| LX      | SWISS INT'L AIRLINES   | 14,814      | 2.24%         | 2,628       | 2.07%         |                |
| A3      | AEGEAN AIRLINES        | 13,868      | 2.09%         | 3,327       | 2.63%         |                |
| BZ      | BLUE BIRD AIRWAYS      | 12,205      | 1.84%         | 912         | 0.72%         |                |
| AC      | AIR CANADA             | 10,319      | 1.56%         | 3,109       | 2.46%         |                |
| AF      | AIR FRANCE             | 9,218       | 1.39%         | 8,005       | 6.33%         | 15.15%         |
| KL      | K.L.M.                 | 8,479       | 1.28%         |             |               |                |
| PC      | PEGASUS AIRLINES       | 8,405       | 1.27%         | 8,469       | 6.70%         | -0.75%         |
| QS      | SMARTWINGS             | 7,244       | 1.09%         |             |               |                |





# International Passenger Traffic

## Distribution by Airline for August

|         |                           | August 2021 |               | August 2020 |               |                |
|---------|---------------------------|-------------|---------------|-------------|---------------|----------------|
| Airline |                           | Passengers  | Rate of Total | Passengers  | Rate of Total | Rate of Change |
| FZ      | FLYDUBAI                  | 5,873       | 0.88%         |             |               |                |
| LO      | LOT POLISH AIRLINES       | 5,406       | 0.81%         |             |               |                |
| BA      | BRITISH AIRWAYS PLC       | 5,116       | 0.77%         | 3,690       | 2.92%         | 38.64%         |
| ET      | ETHIOPIAN AIRLINES        | 4,988       | 0.75%         | 1,039       | 0.82%         |                |
| TO      | TRANSAVIA FRANCE          | 4,987       | 0.75%         | 1,393       | 1.10%         |                |
| SU      | AEROFLOT RUSSIAN AIRLINES | 4,975       | 0.75%         | 1,462       | 1.15%         |                |
| 9U      | AIR MOLDOVA               | 4,114       | 0.62%         | 1,380       | 1.09%         | 198.11%        |
| SN      | BRUSSELS AIRLINES         | 4,049       | 0.61%         |             |               |                |
| HV      | TRANSAVIA                 | 2,690       | 0.40%         |             |               |                |
| B2      | BELAVIA AIRLINE           | 2,514       | 0.38%         | 2,617       | 2.07%         | -3.93%         |
| AZ      | ALITALIA                  | 2,461       | 0.37%         |             |               |                |
| IB      | IBERIA                    | 2,370       | 0.35%         |             |               |                |
| J2      | AZERBAIJAN AIRLINES       | 2,328       | 0.35%         |             |               |                |
| OB      | BLUE AIR AVIATION         | 2,314       | 0.35%         |             |               |                |
| 5F      | FLYONE                    | 2,155       | 0.32%         |             |               |                |
| FB      | BULGARIA AIR              | 1,992       | 0.30%         | 897         | 0.70%         | 122.07%        |
| RO      | TAROM - RUMANIAN AIR TRAN | 1,934       | 0.29%         |             |               |                |
| VS      | VIRGIN ATLANTIC AIRWAYS   | 1,531       | 0.23%         |             |               |                |
| U8      | TUS AIRWAYS               | 1,465       | 0.22%         |             |               |                |
| BUC     | EUROPEAN AIR CHARTER      | 1,457       | 0.22%         | 423         | 0.33%         |                |
| A9      | GEORGIAN AIRWAYS          | 1,446       | 0.21%         |             |               |                |





# International Passenger Traffic

## Distribution by Airline for August

|     |                              | August 2021 |               | August 2020 |               |                |
|-----|------------------------------|-------------|---------------|-------------|---------------|----------------|
|     | Airline                      | Passengers  | Rate of Total | Passengers  | Rate of Total | Rate of Change |
| AY  | FINNAIR                      | 1,377       | 0.20%         |             |               |                |
| BT  | AIR BALTIC                   | 1,343       | 0.20%         |             |               |                |
| MJ  | MYWAY AIRLINES               | 1,233       | 0.18%         |             |               |                |
| DY  | NORWEGIAN AIR SHUTTLE<br>ASA | 1,116       | 0.16%         |             |               |                |
| NO  | NEOS                         | 1,026       | 0.15%         |             |               |                |
| EAF | ELECTRA AIRWAYS              | 951         | 0.14%         |             |               |                |
| AI  | AIR INDIA                    | 942         | 0.14%         | 353         | 0.27%         | 166.85%        |
| EY  | ETIHAD AIRWAYS               | 929         | 0.14%         |             |               |                |
| UX  | AIR EUROPA Lineas Aereas     | 832         | 0.12%         |             |               |                |
| XC  | CORONDON AIRLINES            | 569         | 0.08%         |             |               |                |
| FH  | FREEBIRD AIRLINES            | 548         | 0.08%         |             |               |                |
| TWI | TAILWIND AIRLINES            | 465         | 0.07%         |             |               |                |
| N4  | NORD WIND                    | 446         | 0.06%         |             |               |                |
| CX  | CATHAY PACIFIC AIRWAYS       | 446         | 0.06%         | 183         | 0.14%         | 143.71%        |
| HY  | UZBEKISTAN AIR               | 446         | 0.06%         |             |               |                |
| ENT | ENTER AIR                    | 271         | 0.04%         |             |               |                |
| RJ  | ROYAL JORDANIAN              | 230         | 0.03%         |             |               |                |
| VY  | VUELING AIRLINES S.A.        | 222         | 0.03%         |             |               |                |
| 7W  | WIND ROSE AVIATION Co.<br>Lt | 215         | 0.03%         |             |               |                |
| HM  | AIR SEYCHELLES               | 190         | 0.02%         |             |               |                |
| AHS | AERO HANDLING                | 173         | 0.02%         | 142         | 0.11%         | 21.83%         |





# International Passenger Traffic

## Distribution by Airline for August

| Airline | August 2021 |               | August 2020 |               |                |
|---------|-------------|---------------|-------------|---------------|----------------|
|         | Passengers  | Rate of Total | Passengers  | Rate of Total | Rate of Change |
| OTHERS  | 2,822       | 0.42%         | 3,918       | 3.10%         | -27.97%        |
| TOTAL   | 660,591     |               | 126,355     |               |                |







# Int'l Accumulated Passenger Traffic

## Distribution by Airline

|         |                        | Accumulated 2021 |               | Accumulated 2020 |               |                |
|---------|------------------------|------------------|---------------|------------------|---------------|----------------|
| Airline |                        | Passengers       | Rate of Total | Passengers       | Rate of Total | Rate of Change |
| LY      | EL AL ISRAEL AIRLINES  | 759,098          | 25.52%        | 814,928          | 21.98%        | -6.85%         |
| UA      | UNITED AIRLINES        | 202,668          | 6.81%         | 197,948          | 5.34%         | 2.38%          |
| 6H      | ISRAIR AIRLINES        | 178,648          | 6.00%         | 110,733          | 2.98%         | 61.33%         |
| FR      | RYANAIR                | 162,736          | 5.47%         | 213,319          | 5.75%         | -23.71%        |
| TK      | TURKISH AIRLINES       | 160,987          | 5.41%         | 225,317          | 6.07%         | -28.55%        |
| W6      | WIZZAIR                | 147,182          | 4.94%         | 229,292          | 6.18%         | -35.81%        |
| PC      | PEGASUS AIRLINES       | 116,640          | 3.92%         | 94,723           | 2.55%         | 23.13%         |
| IZ      | ARKIA ISRAELI AIRLINES | 108,744          | 3.65%         | 34,692           | 0.93%         |                |
| LH      | LUFTHANSA              | 101,281          | 3.40%         | 114,254          | 3.08%         | -11.35%        |
| PS      | UKRAINE INTL AIR       | 93,834           | 3.15%         | 88,952           | 2.39%         | 5.48%          |
| DL      | DELTA AIRLINES         | 82,745           | 2.78%         | 54,942           | 1.48%         | 50.60%         |
| EZY     | EASYJET                | 66,595           | 2.23%         | 248,155          | 6.69%         | -73.16%        |
| A3      | AEGEAN AIRLINES        | 62,419           | 2.09%         | 59,154           | 1.59%         | 5.51%          |
| BZ      | BLUE BIRD AIRWAYS      | 50,123           | 1.68%         | 8,638            | 0.23%         |                |
| AA      | AMERICAN AIRLINES      | 47,390           | 1.59%         |                  |               |                |
| FZ      | FLYDUBAI               | 46,906           | 1.57%         |                  |               |                |
| AF      | AIR FRANCE             | 41,025           | 1.37%         | 65,164           | 1.75%         | -37.04%        |
| OS      | AUSTRIAN AIRLINES      | 40,177           | 1.35%         | 45,178           | 1.21%         | -11.06%        |
| LX      | SWISS INT'L AIRLINES   | 39,282           | 1.32%         | 51,608           | 1.39%         | -23.88%        |
| KL      | K.L.M.                 | 30,633           | 1.03%         | 26,316           | 0.70%         | 16.40%         |
| ET      | ETHIOPIAN AIRLINES     | 27,389           | 0.92%         | 31,452           | 0.84%         | -12.91%        |





# Int'l Accumulated Passenger Traffic

## Distribution by Airline

|         |                           | Accumulated 2021 |               | Accumulated 2020 |               |                |
|---------|---------------------------|------------------|---------------|------------------|---------------|----------------|
| Airline |                           | Passengers       | Rate of Total | Passengers       | Rate of Total | Rate of Change |
| SU      | AEROFLOT RUSSIAN AIRLINES | 27,008           | 0.90%         | 115,995          | 3.12%         | -76.71%        |
| BA      | BRITISH AIRWAYS PLC       | 26,691           | 0.89%         | 65,828           | 1.77%         | -59.45%        |
| AC      | AIR CANADA                | 23,970           | 0.80%         | 33,372           | 0.90%         | -28.17%        |
| TO      | TRANSAVIA FRANCE          | 21,711           | 0.73%         | 62,917           | 1.69%         | -65.49%        |
| VS      | VIRGIN ATLANTIC AIRWAYS   | 21,309           | 0.71%         | 25,246           | 0.68%         | -15.59%        |
| QS      | SMARTWINGS                | 18,650           | 0.62%         | 17,954           | 0.48%         | 3.87%          |
| 9U      | AIR MOLDOVA               | 17,366           | 0.58%         | 11,034           | 0.29%         | 57.38%         |
| A9      | GEORGIAN AIRWAYS          | 16,889           | 0.56%         | 23,044           | 0.62%         | -26.70%        |
| B2      | BELAVIA AIRLINE           | 16,410           | 0.55%         | 19,134           | 0.51%         | -14.23%        |
| LO      | LOT POLISH AIRLINES       | 16,137           | 0.54%         | 46,302           | 1.24%         | -65.14%        |
| RO      | TAROM - RUMANIAN AIR TRAN | 13,982           | 0.47%         | 18,083           | 0.48%         | -22.67%        |
| IB      | IBERIA                    | 13,183           | 0.44%         | 30,252           | 0.81%         | -56.42%        |
| TWI     | TAILWIND AIRLINES         | 12,670           | 0.42%         | 12,018           | 0.32%         | 5.42%          |
| FH      | FREEBIRD AIRLINES         | 12,598           | 0.42%         | 7,343            | 0.19%         | 71.56%         |
| FB      | BULGARIA AIR              | 12,355           | 0.41%         | 12,035           | 0.32%         | 2.65%          |
| BUC     | EUROPEAN AIR CHARTER      | 11,999           | 0.40%         | 425              | 0.01%         |                |
| XC      | CORONDON AIRLINES         | 11,581           | 0.38%         | 7,134            | 0.19%         | 62.33%         |
| SN      | BRUSSELS AIRLINES         | 10,938           | 0.36%         | 22,958           | 0.61%         | -52.35%        |
| UX      | AIR EUROPA Lineas Aereas  | 8,528            | 0.28%         |                  |               |                |
| EAF     | ELECTRA AIRWAYS           | 6,820            | 0.22%         |                  |               |                |
| HV      | TRANSAVIA                 | 5,887            | 0.19%         | 32,925           | 0.88%         | -82.11%        |





# Int'l Accumulated Passenger Traffic

## Distribution by Airline

|         |                           | Accumulated 2021 |               | Accumulated 2020 |               |                |
|---------|---------------------------|------------------|---------------|------------------|---------------|----------------|
| Airline |                           | Passengers       | Rate of Total | Passengers       | Rate of Total | Rate of Change |
| HM      | AIR SEYCHELLES            | 5,324            | 0.17%         | 2,887            | 0.07%         | 84.41%         |
| 5F      | FLYONE                    | 5,199            | 0.17%         | 112              |               |                |
| AZ      | ALITALIA                  | 4,685            | 0.15%         | 55,578           | 1.49%         | -91.57%        |
| AI      | AIR INDIA                 | 4,364            | 0.14%         | 21,087           | 0.56%         | -79.30%        |
| U8      | TUS AIRWAYS               | 4,270            | 0.14%         |                  |               |                |
| MJ      | MYWAY AIRLINES            | 4,111            | 0.13%         | 7,166            | 0.19%         | -42.63%        |
| EY      | ETIHAD AIRWAYS            | 3,946            | 0.13%         |                  |               |                |
| BT      | AIR BALTIC                | 3,628            | 0.12%         | 1,681            | 0.04%         | 115.82%        |
| J2      | AZERBAIJAN AIRLINES       | 3,440            | 0.11%         | 3,518            | 0.09%         | -2.21%         |
| OB      | BLUE AIR AVIATION         | 3,017            | 0.10%         | 11,669           | 0.31%         | -74.14%        |
| CY      | CYPRUS AIRWAYS            | 2,663            | 0.08%         | 9,192            | 0.24%         | -71.02%        |
| HY      | UZBEKISTAN AIR            | 2,618            | 0.08%         | 6,593            | 0.17%         | -60.29%        |
| AY      | FINNAIR                   | 2,248            | 0.07%         | 4,176            | 0.11%         | -46.16%        |
| N4      | NORD WIND                 | 1,535            | 0.05%         |                  |               |                |
| NO      | NEOS                      | 1,510            | 0.05%         |                  |               |                |
| CX      | CATHAY PACIFIC AIRWAYS    | 1,151            | 0.03%         | 18,347           | 0.49%         | -93.72%        |
| DY      | NORWEGIAN AIR SHUTTLE ASA | 1,116            | 0.03%         | 5,905            | 0.15%         | -81.10%        |
| 5W      | WIZZ AIR ABU DHABI        | 1,041            | 0.03%         |                  |               |                |
| ENT     | ENTER AIR                 | 967              | 0.03%         | 2,058            | 0.05%         | -53.01%        |
| PQ      | SKYUP AIRLINES            | 895              | 0.03%         | 10,138           | 0.27%         | -91.17%        |
| VY      | VUELING AIRLINES S.A.     | 876              | 0.02%         | 14,964           | 0.40%         | -94.14%        |





# Int'l Accumulated Passenger Traffic

## Distribution by Airline

|         |                            | Accumulated 2021 |               | Accumulated 2020 |               |                |
|---------|----------------------------|------------------|---------------|------------------|---------------|----------------|
| Airline |                            | Passengers       | Rate of Total | Passengers       | Rate of Total | Rate of Change |
| AHS     | AERO HANDLING              | 779              | 0.02%         | 933              | 0.02%         | -16.50%        |
| RJ      | ROYAL JORDANIAN            | 541              | 0.01%         | 27,392           | 0.73%         | -98.02%        |
| JAV     | JORDANIAN AVIATION         | 496              | 0.01%         | 2,029            | 0.05%         | -75.55%        |
| HU      | HAINAN AIRLINES            | 440              | 0.01%         | 7,562            | 0.20%         | -94.18%        |
| ASY     | ROYAL AUSTRALIAN AIR FORCE | 293              |               |                  |               |                |
| PVG     | PRIVILEG STYLE             | 245              |               | 203              |               | 20.68%         |
| 7W      | WIND ROSE AVIATION Co. Lt  | 215              |               | 114              |               | 88.59%         |
| TB      | JET AIRFLY                 | 200              |               |                  |               |                |
| B0      | DREAMJET                   | 128              |               |                  |               |                |
| UL      | SRILANKA AIRLINES          | 119              |               |                  |               |                |
| X5      | AIR EUROPA EXPRESS         | 109              |               |                  |               |                |
|         | OTHERS                     | 18,571           | 0.62%         | 214,598          | 5.78%         | -91.34%        |
|         | <b>TOTAL</b>               | <b>2,973,924</b> |               | <b>3,706,666</b> |               | <b>-19.76%</b> |





# International Passenger Traffic

## Distribution by Israeli Airlines for August

|          |                        | August 2021    |               | August 2020   |               |                |
|----------|------------------------|----------------|---------------|---------------|---------------|----------------|
| Airlines |                        | Passengers     | Rate of Total | Passengers    | Rate of Total | Rate of Change |
| LY       | EL AL ISRAEL AIRLINES  | 157,233        | 23.80%        | 94            | 0.07%         |                |
| 6H       | ISRAIR AIRLINES        | 22,714         | 3.43%         | 9,338         | 7.39%         | 143.24%        |
| IZ       | ARKIA ISRAELI AIRLINES | 22,157         | 3.35%         | 35            | 0.02%         |                |
|          | OTHERS                 | 520            | 0.07%         | 596           | 0.47%         | -12.75%        |
|          | <b>TOTAL</b>           | <b>202,624</b> | <b>30.67%</b> | <b>10,063</b> | <b>7.96%</b>  |                |

# Int'l Accumulated Passenger Traffic

## Distribution by Israeli Airlines

|          |                        | Accumulated 2021 |               | Accumulated 2020 |               |                |
|----------|------------------------|------------------|---------------|------------------|---------------|----------------|
| Airlines |                        | Passengers       | Rate of Total | Passengers       | Rate of Total | Rate of Change |
| LY       | EL AL ISRAEL AIRLINES  | 759,098          | 25.52%        | 814,928          | 21.98%        | -6.85%         |
| 6H       | ISRAIR AIRLINES        | 178,648          | 6.00%         | 110,733          | 2.98%         | 61.33%         |
| IZ       | ARKIA ISRAELI AIRLINES | 108,744          | 3.65%         | 34,692           | 0.93%         |                |
|          | OTHERS                 | 4,425            | 0.14%         | 1,676            | 0.04%         | 164.02%        |
|          | <b>TOTAL</b>           | <b>1,050,915</b> | <b>35.33%</b> | <b>962,029</b>   | <b>25.95%</b> | <b>9.23%</b>   |





# International Passenger Traffic

## Distribution by Countries for August

| Countries            | August 2021 |               | August 2020 |               | Rate of Change |
|----------------------|-------------|---------------|-------------|---------------|----------------|
|                      | Passengers  | Rate of Total | Passengers  | Total of Rate |                |
| UNITED STATES        | 137,313     | 20.78%        | 27,203      | 21.52%        |                |
| GREECE               | 58,398      | 8.84%         | 4,735       | 3.74%         |                |
| FRANCE               | 46,785      | 7.08%         | 11,352      | 8.98%         |                |
| UKRAINE              | 42,695      | 6.46%         | 8,396       | 6.64%         |                |
| AUSTRIA              | 38,584      | 5.84%         | 2           |               |                |
| GERMANY              | 38,309      | 5.79%         | 9,322       | 7.37%         |                |
| TURKEY               | 32,845      | 4.97%         | 31,055      | 24.57%        | 5.76%          |
| SWITZERLAND          | 27,708      | 4.19%         | 2,804       | 2.21%         |                |
| ITALY                | 24,956      | 3.77%         | 1,130       | 0.89%         |                |
| ROMANIA              | 22,568      | 3.41%         | 453         | 0.35%         |                |
| CZECH REPUBLIC       | 18,824      | 2.84%         | 3           |               |                |
| HUNGARY              | 18,697      | 2.83%         | 968         | 0.76%         |                |
| UNITED KINGDOM       | 17,875      | 2.70%         | 7,927       | 6.27%         | 125.49%        |
| NETHERLANDS          | 17,428      | 2.63%         | 8           |               |                |
| BULGARIA             | 15,649      | 2.36%         | 4,889       | 3.86%         |                |
| CANADA               | 11,239      | 1.70%         | 3,110       | 2.46%         |                |
| POLAND               | 10,047      | 1.52%         |             |               |                |
| RUSSIAN FEDERATION   | 8,047       | 1.21%         | 1,868       | 1.47%         |                |
| MOLDOVA              | 6,920       | 1.04%         | 1,380       | 1.09%         |                |
| UNITED ARAB EMIRATES | 6,916       | 1.04%         | 88          | 0.06%         |                |
| BELGIUM              | 6,444       | 0.97%         | 33          | 0.02%         |                |
| ETHIOPIA             | 4,988       | 0.75%         | 1,134       | 0.89%         |                |





# International Passenger Traffic

## Distribution by Countries for August

| Countries  | August 2021 |               | August 2020 |               |                |
|------------|-------------|---------------|-------------|---------------|----------------|
|            | Passengers  | Rate of Total | Passengers  | Total of Rate | Rate of Change |
| MONTENEGRO | 4,901       | 0.74%         | 2           |               |                |
| SERBIA     | 4,488       | 0.67%         | 5           |               |                |
| CYPRUS     | 4,348       | 0.65%         | 634         | 0.50%         |                |
| SPAIN      | 3,597       | 0.54%         | 404         | 0.31%         |                |
| GEORGIA    | 3,424       | 0.51%         | 448         | 0.35%         |                |
| THAILAND   | 2,844       | 0.43%         | 445         | 0.35%         |                |
| PORTUGAL   | 2,639       | 0.39%         | 2           |               |                |
| BELARUS    | 2,514       | 0.38%         | 2,623       | 2.07%         | -4.15%         |
| AZERBAIJAN | 2,455       | 0.37%         | 28          | 0.02%         |                |
| LITHUANIA  | 2,343       | 0.35%         | 334         | 0.26%         |                |
| ICELAND    | 2,279       | 0.34%         | 2           |               |                |
| TANZANIA   | 1,724       | 0.26%         |             |               |                |
| FINLAND    | 1,377       | 0.20%         | 30          | 0.02%         |                |
| LATVIA     | 1,348       | 0.20%         | 115         | 0.09%         |                |
| SLOVENIA   | 1,129       | 0.17%         |             |               |                |
| MOROCCO    | 996         | 0.15%         |             |               |                |
| INDIA      | 942         | 0.14%         | 387         | 0.30%         | 143.41%        |
| DENMARK    | 860         | 0.13%         |             |               |                |
| CHINA      | 654         | 0.09%         | 183         | 0.14%         |                |
| SWEDEN     | 461         | 0.06%         |             |               |                |
| UZBEKISTAN | 446         | 0.06%         | 15          | 0.01%         |                |
| JORDAN     | 300         | 0.04%         | 87          | 0.06%         |                |





# International Passenger Traffic

## Distribution by Countries for August

| Countries    | August 2021    |               | August 2020    |               |                |
|--------------|----------------|---------------|----------------|---------------|----------------|
|              | Passengers     | Rate of Total | Passengers     | Total of Rate | Rate of Change |
| ALBANIA      | 213            | 0.03%         | 98             | 0.07%         | 117.34%        |
| SEYCHELLES   | 190            | 0.02%         | 24             | 0.01%         |                |
| CROATIA      | 188            | 0.02%         | 1,848          | 1.46%         | -89.82%        |
| SLOVAKIA     | 184            | 0.02%         |                |               |                |
| EGYPT        | 153            | 0.02%         | 229            | 0.18%         | -33.18%        |
| KAZAKHSTAN   | 137            | 0.02%         | 2              |               |                |
| FAROEISLANDS | 127            | 0.01%         |                |               |                |
| OTHERS       | 95             | 0.01%         | 550            | 0.43%         | -82.72%        |
| <b>TOTAL</b> | <b>660,591</b> |               | <b>126,355</b> |               |                |







# Int'l Accumulated Passenger Traffic

## Distribution by Countries

| Countries            | Accumulated 2021 |               | Accumulated 2020 |               |                |
|----------------------|------------------|---------------|------------------|---------------|----------------|
|                      | Passengers       | Rate of Total | Passengers       | Rate of Total | Rate of Change |
| UNITED STATES        | 567,711          | 19.08%        | 421,773          | 11.37%        | 34.60%         |
| GREECE               | 333,535          | 11.21%        | 94,379           | 2.54%         |                |
| TURKEY               | 315,688          | 10.61%        | 357,944          | 9.65%         | -11.80%        |
| FRANCE               | 181,792          | 6.11%         | 263,941          | 7.12%         | -31.12%        |
| GERMANY              | 168,133          | 5.65%         | 259,923          | 7.01%         | -35.31%        |
| UKRAINE              | 139,952          | 4.70%         | 124,512          | 3.35%         | 12.40%         |
| GEORGIA              | 124,329          | 4.18%         | 59,604           | 1.60%         | 108.59%        |
| UNITED KINGDOM       | 114,494          | 3.84%         | 248,721          | 6.71%         | -53.96%        |
| UNITED ARAB EMIRATES | 103,969          | 3.49%         | 88               |               |                |
| CYPRUS               | 103,297          | 3.47%         | 76,439           | 2.06%         | 35.13%         |
| AUSTRIA              | 87,098           | 2.92%         | 110,266          | 2.97%         | -21.01%        |
| BULGARIA             | 79,129           | 2.66%         | 80,467           | 2.17%         | -1.66%         |
| SWITZERLAND          | 68,176           | 2.29%         | 113,382          | 3.05%         | -39.87%        |
| ITALY                | 67,842           | 2.28%         | 177,966          | 4.80%         | -61.87%        |
| ROMANIA              | 64,885           | 2.18%         | 119,005          | 3.21%         | -45.47%        |
| NETHERLANDS          | 57,738           | 1.94%         | 105,757          | 2.85%         | -45.40%        |
| RUSSIAN FEDERATION   | 47,801           | 1.60%         | 195,004          | 5.26%         | -75.48%        |
| HUNGARY              | 38,498           | 1.29%         | 98,333           | 2.65%         | -60.84%        |
| SPAIN                | 31,116           | 1.04%         | 151,598          | 4.08%         | -79.47%        |
| POLAND               | 29,935           | 1.00%         | 130,400          | 3.51%         | -77.04%        |
| CZECH REPUBLIC       | 28,373           | 0.95%         | 46,811           | 1.26%         | -39.38%        |
| ETHIOPIA             | 27,652           | 0.92%         | 31,802           | 0.85%         | -13.04%        |





# Int'l Accumulated Passenger Traffic

## Distribution by Countries

| Countries  | Accumulated 2021 |               | Accumulated 2020 |               |                |
|------------|------------------|---------------|------------------|---------------|----------------|
|            | Passengers       | Rate of Total | Passengers       | Rate of Total | Rate of Change |
| CANADA     | 25,614           | 0.86%         | 46,847           | 1.26%         | -45.32%        |
| MOLDOVA    | 23,520           | 0.79%         | 12,733           | 0.34%         | 84.71%         |
| BELGIUM    | 21,263           | 0.71%         | 46,256           | 1.24%         | -54.03%        |
| BELARUS    | 16,638           | 0.55%         | 19,154           | 0.51%         | -13.13%        |
| MONTENEGRO | 15,558           | 0.52%         | 54               |               |                |
| SEYCHELLES | 13,637           | 0.45%         | 3,979            | 0.10%         |                |
| THAILAND   | 11,976           | 0.40%         | 41,272           | 1.11%         | -70.98%        |
| SERBIA     | 8,524            | 0.28%         | 8,990            | 0.24%         | -5.18%         |
| CHINA      | 6,466            | 0.21%         | 41,045           | 1.10%         | -84.24%        |
| INDIA      | 5,512            | 0.18%         | 40,822           | 1.10%         | -86.49%        |
| PORTUGAL   | 5,088            | 0.17%         | 19,609           | 0.52%         | -74.05%        |
| LITHUANIA  | 4,070            | 0.13%         | 14,869           | 0.40%         | -72.62%        |
| AZERBAIJAN | 3,932            | 0.13%         | 8,824            | 0.23%         | -55.43%        |
| LATVIA     | 3,637            | 0.12%         | 1,813            | 0.04%         | 100.60%        |
| TANZANIA   | 3,426            | 0.11%         | 3,606            | 0.09%         | -4.99%         |
| ICELAND    | 3,298            | 0.11%         | 33               |               |                |
| UZBEKISTAN | 3,056            | 0.10%         | 7,033            | 0.18%         | -56.54%        |
| ALBANIA    | 2,666            | 0.08%         | 98               |               |                |
| SLOVENIA   | 2,331            | 0.07%         | 29               |               |                |
| JORDAN     | 2,297            | 0.07%         | 29,984           | 0.80%         | -92.33%        |
| FINLAND    | 2,259            | 0.07%         | 11,342           | 0.30%         | -80.08%        |
| MOROCCO    | 1,471            | 0.04%         | 2                |               |                |





# Int'l Accumulated Passenger Traffic

## Distribution by Countries

| Countries         | Accumulated 2021 |               | Accumulated 2020 |               |                |
|-------------------|------------------|---------------|------------------|---------------|----------------|
|                   | Passengers       | Rate of Total | Passengers       | Rate of Total | Rate of Change |
| EGYPT             | 1,004            | 0.03%         | 10,093           | 0.27%         | -90.05%        |
| DENMARK           | 953              | 0.03%         | 7,309            | 0.19%         | -86.96%        |
| CROATIA           | 611              | 0.02%         | 2,657            | 0.07%         | -77.00%        |
| MEXICO            | 572              | 0.01%         | 273              |               | 109.52%        |
| SWEDEN            | 480              | 0.01%         | 5,915            | 0.15%         | -91.88%        |
| KAZAKHSTAN        | 469              | 0.01%         | 114              |               |                |
| SLOVAKIA          | 292              |               | 539              | 0.01%         | -45.82%        |
| EQUATORIAL GUINEA | 235              |               |                  |               |                |
| PANAMA            | 200              |               | 177              |               | 12.99%         |
| GHANA             | 197              |               | 34               |               |                |
| IRELAND           | 169              |               | 280              |               | -39.64%        |
| BRAZIL            | 134              |               | 15,433           | 0.41%         | -99.13%        |
| FAROEISLANDS      | 127              |               |                  |               |                |
| BAHRAIN           | 120              |               |                  |               |                |
| SOUTH AFRICA      | 109              |               | 12,876           | 0.34%         | -99.15%        |
| GIBRALTAR         | 105              |               | 16               |               |                |
| OTHERS            | 765              | 0.02%         | 24,441           | 0.65%         | -96.87%        |
| <b>TOTAL</b>      | <b>2,973,924</b> |               | <b>3,706,666</b> |               | <b>-19.76%</b> |





# International Passenger Traffic

## Distribution by First Destination for August

| Destination             | August 2021 |               | August 2020 |               |                |
|-------------------------|-------------|---------------|-------------|---------------|----------------|
|                         | Passengers  | Rate of Total | Passengers  | Rate of Total | Rate of Change |
| NEW YORK - J.F.KENNEDY  | 55,600      | 8.41%         | 7,381       | 5.84%         |                |
| NEW YORK - NEWARK       | 43,231      | 6.54%         | 16,476      | 13.03%        | 162.38%        |
| VIENNA                  | 38,368      | 5.80%         |             |               |                |
| PARIS-CHARLES DE GAULLE | 32,743      | 4.95%         | 9,783       | 7.74%         |                |
| KIEV KYIV-BORISPOL      | 31,754      | 4.80%         | 7,146       | 5.65%         |                |
| BUCHAREST - OTOPENI     | 20,022      | 3.03%         | 453         | 0.35%         |                |
| ZURICH                  | 19,792      | 2.99%         | 2,637       | 2.08%         |                |
| PRAGUE-RUZYNE           | 18,824      | 2.84%         | 3           |               |                |
| ISTANBUL                | 18,805      | 2.84%         | 12,938      | 10.23%        | 45.34%         |
| BUDAPEST                | 18,697      | 2.83%         | 968         | 0.76%         |                |
| ATHENS                  | 17,782      | 2.69%         | 3,806       | 3.01%         |                |
| AMSTERDAM               | 17,426      | 2.63%         | 6           |               |                |
| FRANKFURT               | 16,821      | 2.54%         | 7,865       | 6.22%         | 113.87%        |
| LONDON - HEATHROW       | 13,645      | 2.06%         | 3,690       | 2.92%         |                |
| MIAMI INTERNATIONAL     | 13,147      | 1.99%         |             |               |                |
| SAN FRANCISCO           | 11,043      | 1.67%         | 3,223       | 2.55%         |                |
| RHODES-PARADISI         | 10,555      | 1.59%         | 36          | 0.02%         |                |
| HERAKLION               | 10,327      | 1.56%         | 424         | 0.33%         |                |
| ROME - FIUMICINO        | 10,058      | 1.52%         | 457         | 0.36%         |                |
| ISTANBUL-SABIHA GOKCHEN | 9,933       | 1.50%         | 14,503      | 11.47%        | -31.51%        |
| BERLIN BRANDENBURG INTL | 9,419       | 1.42%         |             |               |                |
| LOS ANGELES             | 9,326       | 1.41%         |             |               |                |





# International Passenger Traffic

## Distribution by First Destination for August

| Destination      | August 2021 |               | August 2020 |               |                |
|------------------|-------------|---------------|-------------|---------------|----------------|
|                  | Passengers  | Rate of Total | Passengers  | Rate of Total | Rate of Change |
| TORONTO          | 8,533       | 1.29%         | 3,109       | 2.46%         | 174.46%        |
| MUNICH           | 7,784       | 1.17%         | 1,430       | 1.13%         |                |
| WARSAW           | 7,587       | 1.14%         |             |               |                |
| SOFIA            | 7,149       | 1.08%         | 1,852       | 1.46%         |                |
| CHISINAU         | 6,920       | 1.04%         | 1,380       | 1.09%         |                |
| MILAN-MALPENSA   | 6,729       | 1.01%         | 643         | 0.50%         |                |
| BRUSSELS         | 6,424       | 0.97%         |             |               |                |
| DUBAI            | 5,889       | 0.89%         |             |               |                |
| GENEVA           | 5,670       | 0.85%         | 95          | 0.07%         |                |
| BURGAS           | 5,281       | 0.79%         | 1,222       | 0.96%         |                |
| ODESA            | 5,049       | 0.76%         | 1,250       | 0.98%         |                |
| THESSALONIKI     | 4,994       | 0.75%         | 174         | 0.13%         |                |
| ADDIS ABABA      | 4,988       | 0.75%         | 1,134       | 0.89%         |                |
| PARIS-ORLY       | 4,987       | 0.75%         | 1,393       | 1.10%         |                |
| MOSCOW           | 4,976       | 0.75%         | 1,462       | 1.15%         |                |
| TIVAT            | 4,901       | 0.74%         | 2           |               |                |
| CORFU            | 4,829       | 0.73%         | 97          | 0.07%         |                |
| CHICAGO - O'HARE | 4,709       | 0.71%         | 2           |               |                |
| NICE             | 4,586       | 0.69%         | 176         | 0.13%         |                |
| BELGRADE         | 4,488       | 0.67%         | 5           |               |                |
| BERGAMO          | 3,757       | 0.56%         |             |               |                |
| ANTALYA          | 3,712       | 0.56%         | 3,159       | 2.50%         | 17.50%         |





# International Passenger Traffic

## Distribution by First Destination for August

| Destination              | August 2021 |               | August 2020 |               |                |
|--------------------------|-------------|---------------|-------------|---------------|----------------|
|                          | Passengers  | Rate of Total | Passengers  | Rate of Total | Rate of Change |
| KHARKOV                  | 3,336       | 0.50%         |             |               |                |
| MADRID                   | 3,293       | 0.49%         | 386         | 0.30%         |                |
| VARNA                    | 3,219       | 0.48%         | 1,815       | 1.43%         | 77.35%         |
| TBILISI                  | 3,142       | 0.47%         | 340         | 0.26%         |                |
| KHANIA-SOUDABAY          | 3,091       | 0.46%         |             |               |                |
| MIKONOS                  | 2,944       | 0.44%         | 107         | 0.08%         |                |
| LUTON                    | 2,709       | 0.41%         | 4,133       | 3.27%         | -34.45%        |
| MONTREAL - DORVAL        | 2,706       | 0.40%         |             |               |                |
| LISBON                   | 2,639       | 0.39%         | 2           |               |                |
| MOSCOW-DOMODEDOVO        | 2,564       | 0.38%         | 363         | 0.28%         |                |
| MINSK                    | 2,514       | 0.38%         | 2,623       | 2.07%         | -4.15%         |
| LVOV                     | 2,501       | 0.37%         |             |               |                |
| MARSEILLE                | 2,496       | 0.37%         |             |               |                |
| BAKU HEYDAR ALIYEV INT`L | 2,455       | 0.37%         | 24          | 0.01%         |                |
| VILNIUS INTL             | 2,343       | 0.35%         | 4           |               |                |
| PHUKET                   | 2,325       | 0.35%         |             |               |                |
| REYKJAVIK                | 2,270       | 0.34%         | 2           |               |                |
| BASEL                    | 2,234       | 0.33%         | 72          | 0.05%         |                |
| LARNACA                  | 2,189       | 0.33%         | 617         | 0.48%         |                |
| PAPHOS                   | 2,159       | 0.32%         | 17          | 0.01%         |                |
| BADEN BADEN              | 2,154       | 0.32%         |             |               |                |
| MEMMINGEN                | 2,077       | 0.31%         |             |               |                |





# International Passenger Traffic

## Distribution by First Destination for August

| Destination              | August 2021 |               | August 2020 |               |                |
|--------------------------|-------------|---------------|-------------|---------------|----------------|
|                          | Passengers  | Rate of Total | Passengers  | Rate of Total | Rate of Change |
| TREVISO                  | 2,068       | 0.31%         |             |               |                |
| KRAKOW                   | 2,065       | 0.31%         |             |               |                |
| LYON - SATOLAS           | 1,874       | 0.28%         |             |               |                |
| SANTORINI                | 1,548       | 0.23%         | 11          |               |                |
| CLUJ NAPOCA              | 1,536       | 0.23%         |             |               |                |
| MANCHESTER               | 1,507       | 0.22%         |             |               |                |
| HELSINKI                 | 1,377       | 0.20%         |             |               |                |
| RIGA                     | 1,348       | 0.20%         | 115         | 0.09%         |                |
| ZAKYNTHOS                | 1,330       | 0.20%         |             |               |                |
| CATANIA FONTANAROSSA     | 1,267       | 0.19%         |             |               |                |
| LJUBLJANA                | 1,129       | 0.17%         |             |               |                |
| IASI                     | 1,006       | 0.15%         |             |               |                |
| ZANZIBAR                 | 990         | 0.14%         |             |               |                |
| DELHI                    | 942         | 0.14%         | 387         | 0.30%         | 143.41%        |
| ABU DHABI                | 939         | 0.14%         | 88          | 0.06%         |                |
| VILLAFRANCA-VERONA       | 903         | 0.13%         |             |               |                |
| MARRAKESH                | 850         | 0.12%         |             |               |                |
| PREVEZA                  | 817         | 0.12%         |             |               |                |
| KILIMANJARO              | 734         | 0.11%         |             |               |                |
| COPENHAGEN KASTRUP       | 680         | 0.10%         |             |               |                |
| HONG KONG INT'L          | 654         | 0.09%         | 183         | 0.14%         |                |
| BANGKOK INTL.-SUARNABHUM | 519         | 0.07%         | 445         | 0.35%         | 16.62%         |





# International Passenger Traffic

## Distribution by First Destination for August

| Destination              | August 2021    |               | August 2020    |               |                |
|--------------------------|----------------|---------------|----------------|---------------|----------------|
|                          | Passengers     | Rate of Total | Passengers     | Rate of Total | Rate of Change |
| STOCKHOLM-ARLANDA        | 452            | 0.06%         |                |               |                |
| ST. PETERSBURG           | 450            | 0.06%         | 9              |               |                |
| TASHKENT                 | 446            | 0.06%         | 15             | 0.01%         |                |
| DALAMAN                  | 362            | 0.05%         | 409            | 0.32%         | -11.49%        |
| BATUMI                   | 282            | 0.04%         | 108            | 0.08%         | 161.11%        |
| AMMAN (QUEEN ALIA INT'L) | 271            | 0.04%         | 56             | 0.04%         |                |
| BARCELONA                | 240            | 0.03%         |                |               |                |
| TIRANA                   | 213            | 0.03%         | 98             | 0.07%         | 117.34%        |
| SALZBURG                 | 212            | 0.03%         |                |               |                |
| WROCLAW                  | 210            | 0.03%         |                |               |                |
| MAHE SEYCHELLES INTL     | 190            | 0.02%         | 24             | 0.01%         |                |
| KATOWICE                 | 185            | 0.02%         |                |               |                |
| BILLUND                  | 180            | 0.02%         |                |               |                |
| ANDREWS                  | 149            | 0.02%         |                |               |                |
| ASTANA                   | 137            | 0.02%         |                |               |                |
| KOS                      | 134            | 0.02%         |                |               |                |
| VAGAR AIRPORT            | 127            | 0.01%         |                |               |                |
| OTHERS                   | 1,648          | 0.24%         | 3,522          | 2.78%         | -53.20%        |
| <b>TOTAL</b>             | <b>660,591</b> |               | <b>126,355</b> |               |                |







# Int'l Accumulated Passenger Traffic

## Distribution by First Destination

| Destination             | Accumulated 2021 |               | Accumulated 2020 |               | Rate of Change |
|-------------------------|------------------|---------------|------------------|---------------|----------------|
|                         | Passengers       | Rate of Total | Passengers       | Rate of Total |                |
| NEW YORK - J.F.KENNEDY  | 226,071          | 7.60%         | 117,267          | 3.16%         | 92.78%         |
| NEW YORK - NEWARK       | 196,869          | 6.61%         | 189,576          | 5.11%         | 3.84%          |
| PARIS-CHARLES DE GAULLE | 142,286          | 4.78%         | 150,936          | 4.07%         | -5.73%         |
| ISTANBUL-SABIHA GOKCHEN | 122,015          | 4.10%         | 108,373          | 2.92%         | 12.58%         |
| KIEV KYIV-BORISPOL      | 117,131          | 3.93%         | 91,045           | 2.45%         | 28.65%         |
| ISTANBUL                | 116,572          | 3.91%         | 208,608          | 5.62%         | -44.11%        |
| FRANKFURT               | 103,780          | 3.48%         | 94,298           | 2.54%         | 10.05%         |
| ATHENS                  | 101,623          | 3.41%         | 81,131           | 2.18%         | 25.25%         |
| LONDON - HEATHROW       | 99,200           | 3.33%         | 137,476          | 3.70%         | -27.84%        |
| DUBAI                   | 97,722           | 3.28%         |                  |               |                |
| VIENNA                  | 86,878           | 2.92%         | 107,524          | 2.90%         | -19.20%        |
| BATUMI                  | 70,370           | 2.36%         | 17,352           | 0.46%         |                |
| HERAKLION               | 69,338           | 2.33%         | 439              | 0.01%         |                |
| ANTALYA                 | 66,657           | 2.24%         | 39,617           | 1.06%         | 68.25%         |
| RHODES-PARADISI         | 64,728           | 2.17%         | 58               |               |                |
| LARNACA                 | 59,572           | 2.00%         | 41,330           | 1.11%         | 44.13%         |
| BUCHAREST - OTOPENI     | 58,687           | 1.97%         | 98,944           | 2.66%         | -40.68%        |
| AMSTERDAM               | 57,703           | 1.94%         | 98,456           | 2.65%         | -41.39%        |
| TBILISI                 | 53,958           | 1.81%         | 42,252           | 1.13%         | 27.70%         |
| ZURICH                  | 50,707           | 1.70%         | 70,879           | 1.91%         | -28.45%        |
| MIAMI INTERNATIONAL     | 47,917           | 1.61%         | 19,144           | 0.51%         | 150.29%        |
| PAPHOS                  | 43,725           | 1.47%         | 35,079           | 0.94%         | 24.64%         |





# Int'l Accumulated Passenger Traffic

## Distribution by First Destination

| Destination             | Accumulated 2021 |               | Accumulated 2020 |               |                |
|-------------------------|------------------|---------------|------------------|---------------|----------------|
|                         | Passengers       | Rate of Total | Passengers       | Rate of Total | Rate of Change |
| SAN FRANCISCO           | 42,640           | 1.43%         | 47,947           | 1.29%         | -11.06%        |
| SOFIA                   | 40,637           | 1.36%         | 67,234           | 1.81%         | -39.55%        |
| BUDAPEST                | 38,498           | 1.29%         | 92,129           | 2.48%         | -58.21%        |
| LOS ANGELES             | 35,592           | 1.19%         | 15,708           | 0.42%         | 126.58%        |
| BERLIN BRANDENBURG INTL | 29,693           | 0.99%         |                  |               |                |
| PRAGUE-RUZYNE           | 28,255           | 0.95%         | 46,786           | 1.26%         | -39.60%        |
| ADDIS ABABA             | 27,652           | 0.92%         | 31,802           | 0.85%         | -13.04%        |
| ROME - FIUMICINO        | 27,389           | 0.92%         | 103,076          | 2.78%         | -73.42%        |
| MOSCOW                  | 27,018           | 0.90%         | 115,839          | 3.12%         | -76.67%        |
| THESSALONIKI            | 25,102           | 0.84%         | 12,254           | 0.33%         | 104.84%        |
| CHISINAU                | 23,520           | 0.79%         | 12,733           | 0.34%         | 84.71%         |
| MADRID                  | 23,115           | 0.77%         | 98,512           | 2.65%         | -76.53%        |
| MUNICH                  | 22,976           | 0.77%         | 55,563           | 1.49%         | -58.64%        |
| TORONTO                 | 22,860           | 0.76%         | 46,727           | 1.26%         | -51.07%        |
| PARIS-ORLY              | 21,636           | 0.72%         | 56,267           | 1.51%         | -61.54%        |
| BRUSSELS                | 20,965           | 0.70%         | 32,784           | 0.88%         | -36.05%        |
| WARSAW                  | 20,906           | 0.70%         | 65,474           | 1.76%         | -68.06%        |
| CORFU                   | 20,292           | 0.68%         | 109              |               |                |
| BURGAS                  | 19,769           | 0.66%         | 1,222            | 0.03%         |                |
| MIKONOS                 | 19,378           | 0.65%         | 129              |               |                |
| MOSCOW-DOMODEDOVO       | 18,637           | 0.62%         | 15,700           | 0.42%         | 18.70%         |
| VARNA                   | 18,619           | 0.62%         | 10,002           | 0.26%         | 86.15%         |





# Int'l Accumulated Passenger Traffic

## Distribution by First Destination

| Destination              | Accumulated 2021 |               | Accumulated 2020 |               |                |
|--------------------------|------------------|---------------|------------------|---------------|----------------|
|                          | Passengers       | Rate of Total | Passengers       | Rate of Total | Rate of Change |
| CHICAGO - O'HARE         | 17,056           | 0.57%         | 6                |               |                |
| MILAN-MALPENSA           | 16,736           | 0.56%         | 39,142           | 1.05%         | -57.24%        |
| MINSK                    | 16,638           | 0.55%         | 19,154           | 0.51%         | -13.13%        |
| TIVAT                    | 15,286           | 0.51%         | 21               |               |                |
| MAHE SEYCHELLES INTL     | 13,637           | 0.45%         | 3,979            | 0.10%         |                |
| LUTON                    | 12,384           | 0.41%         | 81,486           | 2.19%         | -84.80%        |
| ODESA                    | 12,194           | 0.41%         | 14,302           | 0.38%         | -14.73%        |
| BERGAMO                  | 11,862           | 0.39%         | 11,114           | 0.29%         | 6.73%          |
| GENEVA                   | 11,183           | 0.37%         | 31,175           | 0.84%         | -64.12%        |
| SANTORINI                | 10,375           | 0.34%         | 16               |               |                |
| ZAKYNTHOS                | 9,507            | 0.31%         |                  |               |                |
| DALAMAN                  | 9,446            | 0.31%         | 1,236            | 0.03%         |                |
| NICE                     | 8,809            | 0.29%         | 6,813            | 0.18%         | 29.29%         |
| BELGRADE                 | 8,524            | 0.28%         | 8,990            | 0.24%         | -5.18%         |
| KHANIA-SOUDABAY          | 8,489            | 0.28%         | 11               |               |                |
| KRAKOW                   | 7,913            | 0.26%         | 29,790           | 0.80%         | -73.43%        |
| BANGKOK INTL.-SUARNABHUM | 7,648            | 0.25%         | 41,272           | 1.11%         | -81.46%        |
| BARCELONA                | 7,589            | 0.25%         | 50,660           | 1.36%         | -85.01%        |
| BADEN BADEN              | 6,166            | 0.20%         | 6,967            | 0.18%         | -11.49%        |
| BASEL                    | 6,141            | 0.20%         | 11,261           | 0.30%         | -45.46%        |
| TREVISO                  | 6,065            | 0.20%         |                  |               |                |
| KHARKOV                  | 5,639            | 0.18%         | 5,402            | 0.14%         | 4.38%          |





# Int'l Accumulated Passenger Traffic

## Distribution by First Destination

| Destination              | Accumulated 2021 |               | Accumulated 2020 |               |                |
|--------------------------|------------------|---------------|------------------|---------------|----------------|
|                          | Passengers       | Rate of Total | Passengers       | Rate of Total | Rate of Change |
| ABU DHABI                | 5,147            | 0.17%         | 88               |               |                |
| MEMMINGEN                | 5,145            | 0.17%         | 6,265            | 0.16%         | -17.87%        |
| LISBON                   | 5,006            | 0.16%         | 19,595           | 0.52%         | -74.45%        |
| LVOV                     | 4,807            | 0.16%         | 4,784            | 0.12%         | 0.48%          |
| MARSEILLE                | 4,760            | 0.16%         | 15,410           | 0.41%         | -69.11%        |
| DELHI                    | 4,720            | 0.15%         | 21,382           | 0.57%         | -77.92%        |
| CLUJ NAPOCA              | 4,531            | 0.15%         | 5,612            | 0.15%         | -19.26%        |
| SHANGHAI PUDONG          | 4,349            | 0.14%         | 6                |               |                |
| PHUKET                   | 4,328            | 0.14%         |                  |               |                |
| VILNIUS INTL             | 4,014            | 0.13%         | 14,230           | 0.38%         | -71.79%        |
| LYON - SATOLAS           | 3,882            | 0.13%         | 14,240           | 0.38%         | -72.73%        |
| BAKU HEYDAR ALIYEV INT`L | 3,866            | 0.12%         | 8,820            | 0.23%         | -56.16%        |
| RIGA                     | 3,637            | 0.12%         | 1,813            | 0.04%         | 100.60%        |
| REYKJAVIK                | 3,289            | 0.11%         | 33               |               |                |
| TASHKENT                 | 3,056            | 0.10%         | 7,020            | 0.18%         | -56.46%        |
| PREVEZA                  | 2,958            | 0.09%         | 8                |               |                |
| MONTREAL - DORVAL        | 2,706            | 0.09%         | 5                |               |                |
| TIRANA                   | 2,666            | 0.08%         | 98               |               |                |
| ZANZIBAR                 | 2,654            | 0.08%         | 3,321            | 0.08%         | -20.08%        |
| CATANIA FONTANAROSSA     | 2,575            | 0.08%         | 29               |               |                |
| MANCHESTER               | 2,499            | 0.08%         | 13,254           | 0.35%         | -81.14%        |
| LJUBLJANA                | 2,331            | 0.07%         | 29               |               |                |





# Int'l Accumulated Passenger Traffic

## Distribution by First Destination

| Destination              | Accumulated 2021 |               | Accumulated 2020 |               |                |
|--------------------------|------------------|---------------|------------------|---------------|----------------|
|                          | Passengers       | Rate of Total | Passengers       | Rate of Total | Rate of Change |
| HELSINKI                 | 2,259            | 0.07%         | 4,176            | 0.11%         | -45.90%        |
| AMMAN (QUEEN ALIA INT'L) | 1,915            | 0.06%         | 29,716           | 0.80%         | -93.55%        |
| ST. PETERSBURG           | 1,693            | 0.05%         | 19,054           | 0.51%         | -91.11%        |
| HONG KONG INT'L          | 1,677            | 0.05%         | 28,003           | 0.75%         | -94.01%        |
| IASI                     | 1,547            | 0.05%         | 6,477            | 0.17%         | -76.11%        |
| VILAFRANCA-VERONA        | 1,397            | 0.04%         | 270              |               |                |
| MARRAKESH                | 1,262            | 0.04%         |                  |               |                |
| HOUSTON INTERCONTINENTAL | 1,023            | 0.03%         | 541              | 0.01%         | 89.09%         |
| BARI -PALESE MACCHIE     | 935              | 0.03%         | 22               |               |                |
| KOS                      | 908              | 0.03%         |                  |               |                |
| KILIMANJARO              | 734              | 0.02%         | 285              |               | 157.54%        |
| COPENHAGEN KASTRUP       | 722              | 0.02%         | 7,307            | 0.19%         | -90.11%        |
| BODRUM                   | 701              | 0.02%         | 61               |               |                |
| AL BATEEN EXECUTIVE AP   | 565              | 0.01%         |                  |               |                |
| CANCUN- MEXICO           | 532              | 0.01%         |                  |               |                |
| DUBAI AL MAKTOUM INT AP  | 512              | 0.01%         |                  |               |                |
| RZESZOW-JASIONKA         | 508              | 0.01%         | 1,118            | 0.03%         | -54.56%        |
| CAIRO INTERNATIONAL      | 479              | 0.01%         | 8,156            | 0.22%         | -94.12%        |
| MUMBAI                   | 473              | 0.01%         | 12,894           | 0.34%         | -96.33%        |
| STOCKHOLM-ARLANDA        | 469              | 0.01%         | 5,909            | 0.15%         | -92.06%        |
| SHARM EL SHEIKH          | 431              | 0.01%         | 105              |               |                |
| KATOWICE                 | 391              | 0.01%         | 10,523           | 0.28%         | -96.28%        |





# Int'l Accumulated Passenger Traffic

## Distribution by First Destination

| Destination           | Accumulated 2021 |               | Accumulated 2020 |               | Rate of Change |
|-----------------------|------------------|---------------|------------------|---------------|----------------|
|                       | Passengers       | Rate of Total | Passengers       | Rate of Total |                |
| MOSCOW-VNUKOVO        | 329              | 0.01%         | 550              | 0.01%         | -40.18%        |
| SKIATHOS              | 327              | 0.01%         |                  |               |                |
| BANGALORE             | 319              | 0.01%         |                  |               |                |
| ALMATY                | 319              | 0.01%         | 107              |               | 198.13%        |
| LIEGE                 | 294              |               | 341              |               | -13.78%        |
| PODGORICA             | 272              |               | 33               |               |                |
| BERLIN -SCHOENEFELD   | 265              |               | 45,214           | 1.21%         | -99.41%        |
| BEIJING               | 254              |               | 8,550            | 0.23%         | -97.02%        |
| ZAGREB                | 249              |               | 1,546            | 0.04%         | -83.89%        |
| ANDREWS               | 232              |               | 205              |               | 13.17%         |
| BILLUND               | 230              |               |                  |               |                |
| SALZBURG              | 216              |               | 2,728            | 0.07%         | -92.08%        |
| WROCLAW               | 210              |               | 3,538            | 0.09%         | -94.06%        |
| BATA AIRPORT          | 210              |               |                  |               |                |
| PANAMA CITY           | 200              |               | 177              |               | 12.99%         |
| ACCRA-KOTOKA          | 197              |               | 34               |               |                |
| CHENGDU               | 186              |               | 2,551            | 0.06%         | -92.70%        |
| SHANNON               | 162              |               | 214              |               | -24.29%        |
| ANKARA-ESENBUGA       | 161              |               | 42               |               |                |
| BRATISLAVA            | 159              |               | 49               |               |                |
| SAMOS                 | 142              |               | 5                |               |                |
| CASABLANCA-MOHAMMED V | 141              |               | 2                |               |                |





# Int'l Accumulated Passenger Traffic

## Distribution by First Destination

| Destination                | Accumulated 2021 |               | Accumulated 2020 |               |                |
|----------------------------|------------------|---------------|------------------|---------------|----------------|
|                            | Passengers       | Rate of Total | Passengers       | Rate of Total | Rate of Change |
| ASTANA                     | 137              |               |                  |               |                |
| SAO PAULO (GUARULHOS INT') | 134              |               | 15,433           | 0.41%         | -99.13%        |
| VAGAR AIRPORT              | 127              |               |                  |               |                |
| BAHRAIN                    | 120              |               |                  |               |                |
| LILLE-LESQUINN             | 120              |               |                  |               |                |
| KALAMATA                   | 110              |               |                  |               |                |
| ZADAR                      | 109              |               | 32               |               |                |
| GIBRALTAR                  | 105              |               | 16               |               |                |
| JOHANNESBURG               | 105              |               | 12,876           | 0.34%         | -99.18%        |
| PLOVDIV                    | 104              |               | 2,009            | 0.05%         | -94.82%        |
| OTHERS                     | 5,675            | 0.19%         | 299,177          | 8.07%         | -98.10%        |
| <b>TOTAL</b>               | <b>2,973,924</b> |               | <b>3,706,666</b> |               | <b>-19.76%</b> |



# Cargo Activity







# Cargo Handling

## Distribution by Transporter

| Transporter                               | August 2021<br>(Ton) | August 2020<br>(Ton) | Rate of Change |
|---|----------------------|----------------------|----------------|
| Cargo on Passenger Aircrafts - Incoming   | 6,190                | 2,034                |                |
| Cargo on Passenger Aircrafts - Outgoing   | 5,482                | 1,961                | 179.55%        |
| <b>Total Cargo on Passenger Aircrafts</b> | <b>11,672</b>        | <b>3,995</b>         | <b>192.16%</b> |
| Cargo on Cargo Aircrafts - Incoming       | 15,677               | 13,075               | 19.90%         |
| Cargo on Cargo Aircrafts - Outgoing       | 7,302                | 7,648                | -4.52%         |
| <b>Total Cargo on Cargo Aircrafts</b>     | <b>22,979</b>        | <b>20,723</b>        | <b>10.88%</b>  |
| <b>Total</b>                              | <b>34,651</b>        | <b>24,718</b>        | <b>40.18%</b>  |

## Distribution by Months

| Month        | 2021 (ton)     |              |                | 2020 (ton)     |              |                | Rate of Change |
|--------------|----------------|--------------|----------------|----------------|--------------|----------------|----------------|
|              | Cargo          | Mail         | Total          | Cargo          | Mail         | Total          |                |
| January      | 28,571         | 632          | 29,203         | 28,568         | 1,395        | 29,964         | -2.53%         |
| February     | 26,508         | 322          | 26,830         | 28,188         | 1,033        | 29,221         | -8.18%         |
| March        | 31,394         | 548          | 31,942         | 26,511         | 535          | 27,047         | 18.09%         |
| April        | 28,779         | 745          | 29,524         | 20,673         | 116          | 20,790         | 42.01%         |
| May          | 29,512         | 544          | 30,056         | 26,974         | 112          | 27,086         | 10.96%         |
| June         | 30,775         | 586          | 31,361         | 24,918         | 216          | 25,134         | 24.77%         |
| July         | 30,360         | 726          | 31,087         | 23,733         | 331          | 24,065         | 29.17%         |
| August       | 34,069         | 582          | 34,651         | 24,252         | 465          | 24,718         | 40.18%         |
| <b>Total</b> | <b>239,968</b> | <b>4,685</b> | <b>244,654</b> | <b>203,817</b> | <b>4,203</b> | <b>208,025</b> | <b>17.60%</b>  |





# Cargo Handling on Passenger Aircrafts

## Distribution by Airline for August

|                              |                      | August 2021          |             |               |                      | August 2020          |             |               |                |  |
|------------------------------|----------------------|----------------------|-------------|---------------|----------------------|----------------------|-------------|---------------|----------------|--|
| Airline                      | Incoming Cargo (Ton) | Outgoing Cargo (Ton) | Cargo (Ton) | Rate of Total | Incoming Cargo (Ton) | Outgoing Cargo (Ton) | Cargo (Ton) | Rate of Total | Rate of Change |  |
| LY EL AL ISRAEL AIRLINES     | 1,092                | 2,008                | 3,101       | 26.56%        |                      |                      |             |               |                |  |
| UA UNITED AIRLINES           | 864                  | 1,148                | 2,012       | 17.23%        | 585                  | 876                  | 1,461       | 36.57%        | 37.71%         |  |
| TK TURKISH AIRLINES          | 975                  | 140                  | 1,115       | 9.55%         | 393                  | 70                   | 463         | 11.58%        | 140.82%        |  |
| LX SWISS INT'L AIRLINES      | 537                  | 213                  | 750         | 6.42%         | 219                  | 166                  | 385         | 9.63%         | 94.80%         |  |
| DL DELTA AIRLINES            | 378                  | 290                  | 668         | 5.72%         | 258                  | 310                  | 568         | 14.21%        | 17.60%         |  |
| AF AIR FRANCE                | 486                  | 180                  | 666         | 5.70%         | 9                    | 11                   | 20          | 0.50%         |                |  |
| AA AMERICAN AIRLINES         | 245                  | 418                  | 663         | 5.68%         |                      |                      |             |               |                |  |
| AC AIR CANADA                | 249                  | 269                  | 518         | 4.43%         | 97                   | 231                  | 328         | 8.21%         | 57.92%         |  |
| ET ETHIOPIAN AIRLINES        | 223                  | 129                  | 352         | 3.01%         | 128                  | 83                   | 211         | 5.28%         | 66.82%         |  |
| BA BRITISH AIRWAYS PLC       | 190                  | 132                  | 322         | 2.75%         | 143                  | 58                   | 200         | 5.00%         | 61.00%         |  |
| IB IBERIA                    | 167                  | 113                  | 281         | 2.40%         |                      |                      |             |               |                |  |
| VS VIRGIN ATLANTIC AIRWAYS   | 161                  | 78                   | 240         | 2.05%         |                      |                      |             |               |                |  |
| EY ETIHAD AIRWAYS            | 88                   | 110                  | 198         | 1.69%         |                      |                      |             |               |                |  |
| CX CATHAY PACIFIC AIRWAYS    | 148                  | 32                   | 181         | 1.55%         | 20                   |                      | 20          | 0.50%         |                |  |
| PC PEGASUS AIRLINES          | 70                   | 50                   | 120         | 1.02%         | 20                   | 25                   | 44          | 1.10%         | 172.72%        |  |
| LH LUFTHANSA                 | 54                   | 26                   | 79          | 0.67%         | 20                   | 12                   | 32          | 0.80%         | 146.87%        |  |
| AI AIR INDIA                 | 46                   | 33                   | 79          | 0.67%         | 9                    | 5                    | 14          | 0.35%         |                |  |
| FZ FLYDUBAI                  | 55                   | 7                    | 61          | 0.52%         |                      |                      |             |               |                |  |
| SU AEROFLOT RUSSIAN AIRLINES | 15                   | 31                   | 46          | 0.39%         | 67                   | 60                   | 127         | 3.17%         | -63.77%        |  |
| PS UKRAINE INTL AIR          | 40                   | 6                    | 46          | 0.39%         | 33                   | 4                    | 37          | 0.92%         | 24.32%         |  |
| A3 AEGEAN AIRLINES           | 23                   | 18                   | 40          | 0.34%         | 9                    | 3                    | 12          | 0.30%         |                |  |
| LO LOT POLISH AIRLINES       | 18                   | 2                    | 20          | 0.17%         |                      |                      |             |               |                |  |





# Cargo Handling on Passenger Aircrafts

## Distribution by Airline for August

|         |                           | August 2021          |                      |               |               | August 2020          |                      |              |               |                |
|---------|---------------------------|----------------------|----------------------|---------------|---------------|----------------------|----------------------|--------------|---------------|----------------|
| Airline |                           | Incoming Cargo (Ton) | Outgoing Cargo (Ton) | Cargo (Ton)   | Rate of Total | Incoming Cargo (Ton) | Outgoing Cargo (Ton) | Cargo (Ton)  | Rate of Total | Rate of Change |
| OS      | AUSTRIAN AIRLINES         | 11                   | 5                    | 16            | 0.13%         |                      |                      |              |               |                |
| BT      | AIR BALTIC                | 7                    | 6                    | 13            | 0.11%         |                      |                      |              |               |                |
| RO      | TAROM - RUMANIAN AIR TRAN | 9                    | 3                    | 12            | 0.10%         |                      |                      |              |               |                |
| KL      | K.L.M.                    | 2                    | 9                    | 11            | 0.09%         |                      |                      |              |               |                |
| AZ      | ALITALIA                  | 5                    | 7                    | 11            | 0.09%         |                      |                      |              |               |                |
| B2      | BELAVIA AIRLINE           | 4                    | 5                    | 8             | 0.06%         | 7                    | 7                    | 14           | 0.35%         | -42.85%        |
| QS      | SMARTWINGS                | 6                    | 2                    | 8             | 0.06%         |                      |                      |              |               |                |
|         | OTHERS                    | 19                   | 14                   | 33            | 0.28%         | 19                   | 42                   | 61           | 1.52%         | -45.90%        |
|         | <b>TOTAL</b>              | <b>6,190</b>         | <b>5,482</b>         | <b>11,672</b> |               | <b>2,034</b>         | <b>1,961</b>         | <b>3,995</b> |               | <b>192.16%</b> |





# Accumulated Cargo Handling on Passengers Aircrafts

## Distribution by Airline

|         |                           | Accumulated 2021     |                      |             |               | Accumulated 2020     |                      |             |               |                |
|---------|---------------------------|----------------------|----------------------|-------------|---------------|----------------------|----------------------|-------------|---------------|----------------|
| Airline |                           | Incoming Cargo (Ton) | Outgoing Cargo (Ton) | Cargo (Ton) | Rate of Total | Incoming Cargo (Ton) | Outgoing Cargo (Ton) | Cargo (Ton) | Rate of Total | Rate of Change |
| LY      | EL AL ISRAEL AIRLINES     | 6,443                | 8,813                | 15,256      | 27.43%        | 6,954                | 6,268                | 13,222      | 26.32%        | 15.38%         |
| UA      | UNITED AIRLINES           | 3,885                | 6,455                | 10,340      | 18.59%        | 4,987                | 6,203                | 11,190      | 22.27%        | -7.59%         |
| DL      | DELTA AIRLINES            | 2,207                | 2,146                | 4,352       | 7.82%         | 1,012                | 879                  | 1,891       | 3.76%         | 130.14%        |
| TK      | TURKISH AIRLINES          | 3,450                | 579                  | 4,029       | 7.24%         | 2,799                | 866                  | 3,665       | 7.29%         | 9.93%          |
| LX      | SWISS INT'L AIRLINES      | 1,741                | 1,018                | 2,759       | 4.96%         | 2,034                | 1,183                | 3,217       | 6.40%         | -14.23%        |
| ET      | ETHIOPIAN AIRLINES        | 1,485                | 923                  | 2,408       | 4.32%         | 439                  | 274                  | 713         | 1.41%         |                |
| AA      | AMERICAN AIRLINES         | 929                  | 1,459                | 2,388       | 4.29%         |                      |                      |             |               |                |
| AF      | AIR FRANCE                | 1,470                | 750                  | 2,220       | 3.99%         | 49                   | 81                   | 130         | 0.25%         |                |
| VS      | VIRGIN ATLANTIC AIRWAYS   | 1,251                | 781                  | 2,032       | 3.65%         | 586                  | 444                  | 1,029       | 2.04%         | 97.47%         |
| AC      | AIR CANADA                | 757                  | 1,057                | 1,814       | 3.26%         | 1,235                | 1,347                | 2,582       | 5.14%         | -29.74%        |
| BA      | BRITISH AIRWAYS PLC       | 796                  | 825                  | 1,621       | 2.91%         | 1,214                | 741                  | 1,955       | 3.89%         | -17.08%        |
| IB      | IBERIA                    | 857                  | 393                  | 1,250       | 2.24%         | 709                  | 218                  | 927         | 1.84%         | 34.84%         |
| EY      | ETIHAD AIRWAYS            | 501                  | 491                  | 992         | 1.78%         |                      |                      |             |               |                |
| SU      | AEROFLOT RUSSIAN AIRLINES | 351                  | 613                  | 964         | 1.73%         | 1,649                | 1,540                | 3,189       | 6.34%         | -69.77%        |
| PC      | PEGASUS AIRLINES          | 452                  | 252                  | 704         | 1.26%         | 208                  | 145                  | 352         | 0.70%         | 100.00%        |
| CX      | CATHAY PACIFIC AIRWAYS    | 371                  | 162                  | 533         | 0.95%         | 516                  | 400                  | 916         | 1.82%         | -41.81%        |
| AI      | AIR INDIA                 | 189                  | 174                  | 363         | 0.65%         | 477                  | 262                  | 738         | 1.46%         | -50.81%        |
| FZ      | FLYDUBAI                  | 255                  | 49                   | 304         | 0.54%         |                      |                      |             |               |                |
| PS      | UKRAINE INTL AIR          | 195                  | 63                   | 258         | 0.46%         | 116                  | 94                   | 211         | 0.42%         | 22.27%         |
| LH      | LUFTHANSA                 | 160                  | 65                   | 225         | 0.40%         | 220                  | 174                  | 394         | 0.78%         | -42.89%        |
| A3      | AEGEAN AIRLINES           | 75                   | 24                   | 99          | 0.17%         | 44                   | 71                   | 116         | 0.23%         | -14.65%        |
| LO      | LOT POLISH AIRLINES       | 60                   | 7                    | 67          | 0.12%         | 65                   | 22                   | 87          | 0.17%         | -22.98%        |





# Accumulated Cargo Handling on Passengers Aircrafts

## Distribution by Airline

|         |                           | Accumulated 2021     |                      |               |               | Accumulated 2020     |                      |               |               |                |
|---------|---------------------------|----------------------|----------------------|---------------|---------------|----------------------|----------------------|---------------|---------------|----------------|
| Airline |                           | Incoming Cargo (Ton) | Outgoing Cargo (Ton) | Cargo (Ton)   | Rate of Total | Incoming Cargo (Ton) | Outgoing Cargo (Ton) | Cargo (Ton)   | Rate of Total | Rate of Change |
| RO      | TAROM - RUMANIAN AIR TRAN | 42                   | 18                   | 59            | 0.10%         | 37                   | 27                   | 65            | 0.12%         | -9.23%         |
| OS      | AUSTRIAN AIRLINES         | 42                   | 15                   | 57            | 0.10%         | 32                   | 21                   | 53            | 0.10%         | 7.54%          |
| B2      | BELAVIA AIRLINE           | 25                   | 26                   | 51            | 0.09%         | 42                   | 55                   | 97            | 0.19%         | -47.42%        |
| BT      | AIR BALTIC                | 18                   | 8                    | 26            | 0.04%         | 2                    | 3                    | 5             |               |                |
| KL      | K.L.M.                    | 8                    | 18                   | 26            | 0.04%         | 9                    | 11                   | 20            | 0.03%         | 30.00%         |
| QS      | SMARTWINGS                | 15                   | 7                    | 22            | 0.03%         | 65                   | 34                   | 98            | 0.19%         | -77.55%        |
| AZ      | ALITALIA                  | 6                    | 13                   | 20            | 0.03%         | 73                   | 126                  | 199           | 0.39%         | -89.94%        |
|         | OTHERS                    | 214                  | 160                  | 374           | 0.67%         | 2,140                | 1,028                | 3,168         | 6.30%         | -88.19%        |
|         | <b>TOTAL</b>              | <b>28,249</b>        | <b>27,366</b>        | <b>55,616</b> |               | <b>27,710</b>        | <b>22,517</b>        | <b>50,229</b> |               | <b>10.72%</b>  |





# Cargo Handling on Cargo Aircrafts

## Distribution by Airlines August

|         |                        | August 2021          |                      |             |               | August 2020          |                      |             |               |                |
|---------|------------------------|----------------------|----------------------|-------------|---------------|----------------------|----------------------|-------------|---------------|----------------|
| Airline |                        | Incoming Cargo (Ton) | Outgoing Cargo (Ton) | Cargo (Ton) | Rate of Total | Incoming Cargo (Ton) | Outgoing Cargo (Ton) | Cargo (Ton) | Rate of Total | Rate of Change |
| ICL     | C.A.L ISRAELI CARGO    | 3,271                | 1,821                | 5,092       | 22.15%        | 643                  | 433                  | 1,076       | 5.19%         |                |
| LY      | EL AL ISRAEL AIRLINES  | 3,066                | 1,286                | 4,352       | 18.93%        | 1,574                | 1,046                | 2,620       | 12.64%        | 66.10%         |
| TK      | TURKISH AIRLINES       | 2,127                | 304                  | 2,430       | 10.57%        | 1,750                | 418                  | 2,168       | 10.46%        | 12.08%         |
| QY      | EUROPEAN AIR TRANSPORT | 1,214                | 814                  | 2,028       | 8.82%         | 1,070                | 704                  | 1,774       | 8.56%         | 14.31%         |
| MNB     | MNG CARGO AIRLINES     | 1,483                | 255                  | 1,738       | 7.56%         | 1,252                | 277                  | 1,529       | 7.37%         | 13.66%         |
| AZG     | SILK WAY WEST AIRLINES | 624                  | 828                  | 1,452       | 6.31%         | 726                  | 785                  | 1,511       | 7.29%         | -3.90%         |
| LH      | LUFTHANSA              | 618                  | 575                  | 1,193       | 5.19%         | 783                  | 577                  | 1,360       | 6.56%         | -12.27%        |
| RSB     | RUBY STAR              | 906                  | 149                  | 1,055       | 4.59%         |                      |                      |             |               |                |
| CX      | CATHAY PACIFIC AIRWAYS | 506                  | 300                  | 806         | 3.50%         | 319                  | 214                  | 533         | 2.57%         | 51.21%         |
| FX      | FEDERAL EXPRESS        | 490                  | 269                  | 759         | 3.30%         | 461                  | 290                  | 751         | 3.62%         | 1.06%          |
| 3V      | ASL AIRLINES BELGIUM   | 280                  | 172                  | 451         | 1.96%         | 357                  | 195                  | 553         | 2.66%         | -18.44%        |
| EY      | ETIHAD AIRWAYS         | 158                  | 237                  | 395         | 1.71%         |                      |                      |             |               |                |
| VN      | VIETNAM AIRLINES       | 348                  | 3                    | 351         | 1.52%         |                      |                      |             |               |                |
| AJT     | AMERIJET INTERNATIONAL | 171                  | 93                   | 264         | 1.14%         |                      |                      |             |               |                |
| ET      | ETHIOPIAN AIRLINES     | 95                   | 36                   | 131         | 0.57%         |                      |                      |             |               |                |
| 3U      | SICHUAN AIRLINES       | 87                   | 43                   | 130         | 0.56%         | 570                  | 103                  | 673         | 3.24%         | -80.68%        |
| PLM     | WAMOS AIR              | 76                   |                      | 76          | 0.33%         |                      |                      |             |               |                |
| M4      | POSTE AIR CARGO        | 57                   | 11                   | 68          | 0.29%         |                      |                      |             |               |                |
| VDA     | VOLGA DNEPER           |                      | 68                   | 68          | 0.29%         |                      |                      |             |               |                |
| A9      | GEORGIAN AIRWAYS       | 41                   |                      | 41          | 0.17%         |                      |                      |             |               |                |
| IB      | IBERIA                 | 12                   | 16                   | 28          | 0.12%         |                      |                      |             |               |                |
| PVG     | PRIVILEG STYLE         | 22                   |                      | 22          | 0.09%         |                      |                      |             |               |                |





# Cargo Handling on Cargo Aircrafts

## Distribution by Airlines August

|                        |                      | August 2021          |               |               |                      | August 2020          |               |               |                |  |
|------------------------|----------------------|----------------------|---------------|---------------|----------------------|----------------------|---------------|---------------|----------------|--|
| Airline                | Incoming Cargo (Ton) | Outgoing Cargo (Ton) | Cargo (Ton)   | Rate of Total | Incoming Cargo (Ton) | Outgoing Cargo (Ton) | Cargo (Ton)   | Rate of Total | Rate of Change |  |
| 6H ISRAIR AIRLINES     | 22                   |                      | 22            | 0.09%         | 34                   | 32                   | 66            | 0.31%         | -66.66%        |  |
| CHG CHALLENGE AIRLINES |                      | 12                   | 12            | 0.05%         |                      |                      |               |               |                |  |
| OTHERS                 | 1                    | 12                   | 14            | 0.06%         | 3,535                | 2,573                | 6,107         | 29.46%        | -99.77%        |  |
| <b>TOTAL</b>           | <b>15,677</b>        | <b>7,302</b>         | <b>22,979</b> |               | <b>13,075</b>        | <b>7,648</b>         | <b>20,723</b> |               | <b>10.88%</b>  |  |





# Accumulated Cargo Handling on Cargo Aircrafts

## Distribution by Airline

|         |                        | Accumulated 2021     |                      |             |               | Accumulated 2020     |                      |             |               |                |
|---------|------------------------|----------------------|----------------------|-------------|---------------|----------------------|----------------------|-------------|---------------|----------------|
| Airline |                        | Incoming Cargo (Ton) | Outgoing Cargo (Ton) | Cargo (Ton) | Rate of Total | Incoming Cargo (Ton) | Outgoing Cargo (Ton) | Cargo (Ton) | Rate of Total | Rate of Change |
| ICL     | C.A.L ISRAELI CARGO    | 28,205               | 15,306               | 43,511      | 23.01%        | 12,438               | 7,981                | 20,420      | 12.94%        | 113.08%        |
| LY      | EL AL ISRAEL AIRLINES  | 20,691               | 12,488               | 33,179      | 17.55%        | 20,231               | 12,260               | 32,491      | 20.59%        | 2.11%          |
| TK      | TURKISH AIRLINES       | 19,468               | 4,455                | 23,923      | 12.65%        | 12,051               | 3,875                | 15,926      | 10.09%        | 50.21%         |
| QY      | EUROPEAN AIR TRANSPORT | 9,346                | 6,652                | 15,998      | 8.46%         | 7,626                | 5,282                | 12,909      | 8.18%         | 23.92%         |
| MN<br>B | MNG CARGO AIRLINES     | 10,422               | 1,985                | 12,407      | 6.56%         | 7,549                | 2,062                | 9,611       | 6.09%         | 29.09%         |
| AZG     | SILK WAY WEST AIRLINES | 5,513                | 6,253                | 11,765      | 6.22%         | 6,156                | 5,447                | 11,603      | 7.35%         | 1.39%          |
| LH      | LUFTHANSA              | 5,353                | 3,926                | 9,279       | 4.90%         | 4,983                | 3,907                | 8,890       | 5.63%         | 4.37%          |
| FX      | FEDERAL EXPRESS        | 4,071                | 2,793                | 6,864       | 3.63%         | 3,479                | 2,566                | 6,044       | 3.83%         | 13.56%         |
| CX      | CATHAY PACIFIC AIRWAYS | 2,605                | 1,795                | 4,400       | 2.32%         | 834                  | 496                  | 1,330       | 0.84%         |                |
| 3V      | ASL AIRLINES BELGIUM   | 2,158                | 1,301                | 3,459       | 1.82%         | 2,471                | 1,455                | 3,926       | 2.48%         | -11.89%        |
| EY      | ETIHAD AIRWAYS         | 765                  | 1,047                | 1,811       | 0.95%         | 8                    |                      | 8           |               |                |
| ET      | ETHIOPIAN AIRLINES     | 965                  | 528                  | 1,493       | 0.78%         | 158                  | 70                   | 228         | 0.14%         |                |
| RSB     | RUBY STAR              | 1,269                | 149                  | 1,417       | 0.74%         |                      |                      |             |               |                |
| IB      | IBERIA                 | 829                  | 317                  | 1,146       | 0.60%         |                      |                      |             |               |                |
| 3U      | SICHUAN AIRLINES       | 776                  | 288                  | 1,064       | 0.56%         | 2,209                | 432                  | 2,641       | 1.67%         | -59.71%        |
| M4      | POSTE AIR CARGO        | 345                  | 142                  | 487         | 0.25%         |                      |                      |             |               |                |
| VN      | VIETNAM AIRLINES       | 348                  | 3                    | 351         | 0.18%         |                      |                      |             |               |                |
| AJT     | AMERIJET INTERNATIONAL | 171                  | 93                   | 264         | 0.13%         |                      |                      |             |               |                |
| PLM     | WAMOS AIR              | 232                  |                      | 232         | 0.12%         |                      |                      |             |               |                |
| A9      | GEORGIAN AIRWAYS       | 139                  |                      | 139         | 0.07%         |                      |                      |             |               |                |
| VDA     | VOLGA DNEPER           | 9                    | 68                   | 76          | 0.04%         |                      |                      |             |               |                |
| 6H      | ISRAIR AIRLINES        | 53                   | 11                   | 64          | 0.03%         | 404                  | 306                  | 710         | 0.44%         | -90.98%        |







# Accumulated Cargo Handling on Cargo Aircrafts

## Distribution by Airline

|         |                    | Accumulated 2021     |                      |                |               | Accumulated 2020     |                      |                |               |                |
|---------|--------------------|----------------------|----------------------|----------------|---------------|----------------------|----------------------|----------------|---------------|----------------|
| Airline |                    | Incoming Cargo (Ton) | Outgoing Cargo (Ton) | Cargo (Ton)    | Rate of Total | Incoming Cargo (Ton) | Outgoing Cargo (Ton) | Cargo (Ton)    | Rate of Total | Rate of Change |
| PVG     | PRIVILEG STYLE     | 22                   |                      | 22             | 0.01%         |                      |                      |                |               |                |
| CHG     | CHALLENGE AIRLINES |                      | 12                   | 12             |               |                      |                      |                |               |                |
|         | OTHERS             | 9,714                | 5,959                | 15,673         | 8.29%         | 17,833               | 13,225               | 31,058         | 19.68%        | -49.53%        |
|         | <b>TOTAL</b>       | <b>123,468</b>       | <b>65,569</b>        | <b>189,038</b> |               | <b>98,431</b>        | <b>59,363</b>        | <b>157,796</b> |               | <b>19.79%</b>  |





# Cargo Handling on Cargo Aircrafts

## Distribution by Countries for August

| Country              | August 2021          |                      |               |               | August 2020          |                      |               |               |                |
|----------------------|----------------------|----------------------|---------------|---------------|----------------------|----------------------|---------------|---------------|----------------|
|                      | Incoming Cargo (Ton) | Outgoing Cargo (Ton) | Cargo (Ton)   | Rate of Total | Incoming Cargo (Ton) | Outgoing Cargo (Ton) | Cargo (Ton)   | Rate of Total | Rate of Change |
| BELGIUM              | 4,157                | 3,140                | 7,297         | 31.75%        | 3,240                | 3,889                | 7,129         | 34.40%        | 2.35%          |
| GERMANY              | 2,795                | 807                  | 3,602         | 15.67%        | 2,760                | 1,206                | 3,966         | 19.13%        | -9.17%         |
| TURKEY               | 2,761                | 555                  | 3,315         | 14.42%        | 2,242                | 740                  | 2,982         | 14.38%        | 11.16%         |
| CHINA                | 2,360                | 750                  | 3,111         | 13.53%        | 889                  | 317                  | 1,207         | 5.82%         | 157.74%        |
| AZERBAIJAN           | 624                  | 828                  | 1,452         | 6.31%         | 726                  | 840                  | 1,566         | 7.55%         | -7.27%         |
| NORWAY               | 1,046                |                      | 1,046         | 4.55%         | 1,063                |                      | 1,063         | 5.12%         | -1.59%         |
| UNITED ARAB EMIRATES | 500                  | 303                  | 804           | 3.49%         |                      |                      |               |               |                |
| EGYPT                |                      | 575                  | 575           | 2.50%         |                      | 7                    | 8             | 0.03%         |                |
| CYPRUS               | 372                  | 58                   | 429           | 1.86%         | 710                  |                      | 710           | 3.42%         | -39.57%        |
| VIETNAM              | 348                  | 2                    | 350           | 1.52%         |                      |                      |               |               |                |
| FRANCE               | 105                  | 190                  | 295           | 1.28%         | 372                  | 230                  | 603           | 2.90%         | -51.07%        |
| INDIA                | 243                  | 11                   | 254           | 1.10%         |                      |                      |               |               |                |
| ETHIOPIA             | 95                   | 36                   | 131           | 0.57%         |                      |                      |               |               |                |
| SPAIN                | 110                  | 16                   | 126           | 0.54%         |                      |                      |               |               |                |
| ITALY                | 57                   | 11                   | 68            | 0.29%         | 5                    | 8                    | 13            | 0.06%         |                |
| SOUTH KOREA          | 42                   |                      | 42            | 0.18%         |                      |                      |               |               |                |
| GEORGIA              | 41                   |                      | 41            | 0.17%         |                      |                      |               |               |                |
| THAILAND             | 19                   |                      | 19            | 0.08%         |                      |                      |               |               |                |
| UZBEKISTAN           |                      | 15                   | 15            | 0.06%         |                      |                      |               |               |                |
| OTHERS               | 1                    | 6                    | 8             | 0.03%         | 1,067                | 410                  | 1,477         | 7.12%         | -99.45%        |
| <b>TOTAL</b>         | <b>15,677</b>        | <b>7,302</b>         | <b>22,979</b> |               | <b>13,075</b>        | <b>7,648</b>         | <b>20,723</b> |               | <b>10.88%</b>  |





# Accumulated Cargo Handling on Cargo Aircrafts

## Distribution by Countries

| Countries            | Accumulated 2021     |                      |                |               | Accumulated 2020     |                      |                |               |                |
|----------------------|----------------------|----------------------|----------------|---------------|----------------------|----------------------|----------------|---------------|----------------|
|                      | Incoming Cargo (Ton) | Outgoing Cargo (Ton) | Cargo (Ton)    | Rate of Total | Incoming Cargo (Ton) | Outgoing Cargo (Ton) | Cargo (Ton)    | Rate of Total | Rate of Change |
| BELGIUM              | 29,808               | 27,535               | 57,343         | 30.33%        | 24,487               | 26,243               | 50,731         | 32.14%        | 13.03%         |
| TURKEY               | 26,218               | 6,612                | 32,829         | 17.36%        | 15,877               | 6,915                | 22,793         | 14.44%        | 44.03%         |
| GERMANY              | 20,583               | 7,706                | 28,289         | 14.96%        | 19,461               | 9,657                | 29,118         | 18.45%        | -2.84%         |
| CHINA                | 20,231               | 4,872                | 25,103         | 13.27%        | 9,804                | 1,388                | 11,192         | 7.09%         | 124.29%        |
| AZERBAIJAN           | 5,514                | 6,184                | 11,698         | 6.18%         | 6,114                | 5,520                | 11,634         | 7.37%         | 0.55%          |
| NORWAY               | 7,446                | 51                   | 7,497          | 3.96%         | 7,260                |                      | 7,260          | 4.60%         | 3.26%          |
| CYPRUS               | 2,744                | 581                  | 3,325          | 1.75%         | 5,337                | 321                  | 5,658          | 3.58%         | -41.23%        |
| EGYPT                |                      | 2,965                | 2,965          | 1.56%         | 8                    | 51                   | 59             | 0.03%         |                |
| FRANCE               | 821                  | 1,741                | 2,562          | 1.35%         | 1,037                | 1,334                | 2,371          | 1.50%         | 8.05%          |
| UNITED ARAB EMIRATES | 1,219                | 1,249                | 2,468          | 1.30%         | 24                   |                      | 24             | 0.01%         |                |
| SPAIN                | 1,408                | 324                  | 1,732          | 0.91%         | 1,151                | 439                  | 1,590          | 1.00%         | 8.93%          |
| ETHIOPIA             | 965                  | 528                  | 1,493          | 0.78%         | 158                  | 71                   | 229            | 0.14%         |                |
| ITALY                | 531                  | 230                  | 762            | 0.40%         | 366                  | 101                  | 467            | 0.29%         | 63.16%         |
| INDIA                | 330                  | 137                  | 468            | 0.24%         | 175                  | 154                  | 330            | 0.20%         | 41.81%         |
| SOUTH KOREA          | 78                   | 292                  | 370            | 0.19%         | 114                  | 178                  | 291            | 0.18%         | 27.14%         |
| VIETNAM              | 348                  | 2                    | 350            | 0.18%         |                      |                      |                |               |                |
| GEORGIA              | 140                  | 14                   | 153            | 0.08%         |                      |                      |                |               |                |
| THAILAND             | 108                  |                      | 108            | 0.05%         |                      |                      |                |               |                |
| UZBEKISTAN           |                      | 15                   | 15             |               | 232                  | 14                   | 246            | 0.15%         | -93.90%        |
| OTHERS               | 4,975                | 4,533                | 9,508          | 5.02%         | 6,825                | 6,977                | 13,803         | 8.74%         | -31.11%        |
| <b>TOTAL</b>         | <b>123,468</b>       | <b>65,569</b>        | <b>189,038</b> |               | <b>98,431</b>        | <b>59,363</b>        | <b>157,796</b> |               | <b>19.79%</b>  |



# Domestic Activity

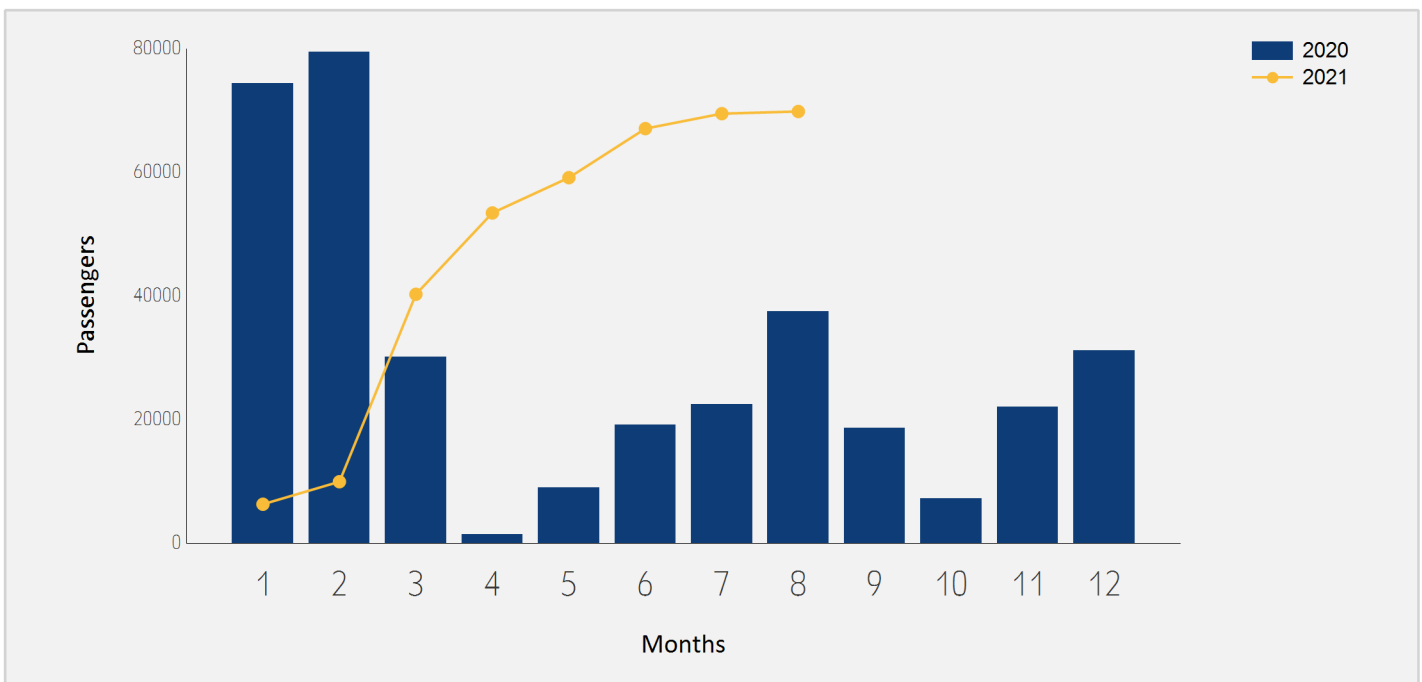




# Domestic Passenger Traffic

## Distribution by Months

| Month        | 2021           | 2020           | Rate of Change |
|--------------|----------------|----------------|----------------|
| January      | 6,294          | 74,380         | -91.53%        |
| February     | 9,936          | 79,475         | -87.49%        |
| March        | 40,263         | 30,137         | 33.59%         |
| April        | 53,421         | 1,412          |                |
| May          | 59,126         | 8,989          |                |
| June         | 67,065         | 19,115         |                |
| July         | 69,490         | 22,417         |                |
| August       | 69,837         | 37,477         | 86.34%         |
| <b>Total</b> | <b>375,432</b> | <b>273,402</b> | <b>37.31%</b>  |

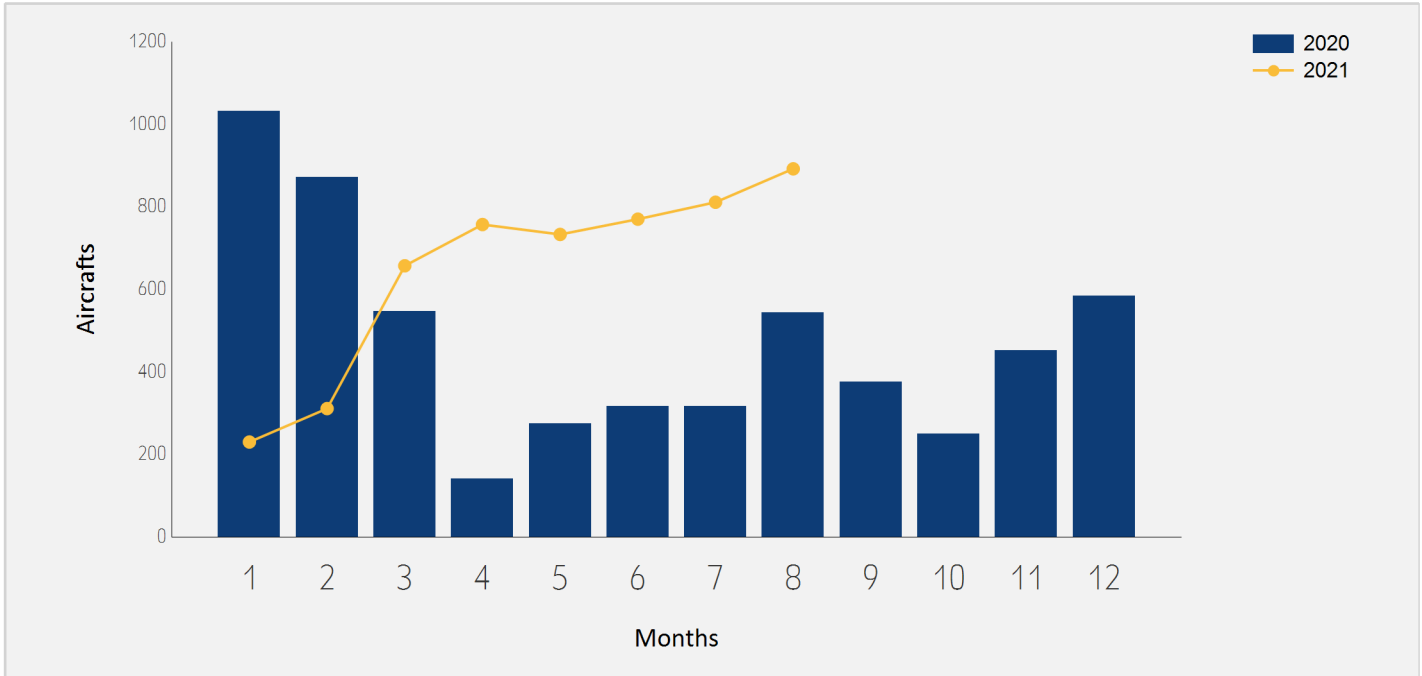




# Domestic Aircrafts Traffic

## Distribution by Months

| Month        | 2021         | 2020         | Rate of Change |
|--------------|--------------|--------------|----------------|
| January      | 230          | 1,032        | -77.71%        |
| February     | 311          | 871          | -64.29%        |
| March        | 657          | 547          | 20.10%         |
| April        | 757          | 141          |                |
| May          | 733          | 274          | 167.51%        |
| June         | 770          | 317          | 142.90%        |
| July         | 811          | 316          | 156.64%        |
| August       | 892          | 543          | 64.27%         |
| <b>Total</b> | <b>5,161</b> | <b>4,041</b> | <b>27.71%</b>  |





# Domestic Passengers Traffic

## Distribution by Airlines for August

|         |                        | August 2021   |               | August 2020   |               |                |
|---------|------------------------|---------------|---------------|---------------|---------------|----------------|
| Airline |                        | Passengers    | Rate of Total | Passengers    | Rate of Total | Rate of Change |
| IZ      | ARKIA ISRAELI AIRLINES | 41,187        | 58.97%        |               |               |                |
| 6H      | ISRAIR AIRLINES        | 28,553        | 40.88%        | 37,364        | 99.69%        | -23.58%        |
|         | OTHERS                 | 97            | 0.13%         | 113           | 0.30%         | -14.15%        |
|         | <b>TOTAL</b>           | <b>69,837</b> |               | <b>37,477</b> |               | <b>86.34%</b>  |

# Accumulated Domestic Passengers Traffic

## Distribution by Airlines

|         |                        | Accumulated 2021 |               | Accumulated 2020 |               |                |
|---------|------------------------|------------------|---------------|------------------|---------------|----------------|
| Airline |                        | Passengers       | Rate of Total | Passengers       | Rate of Total | Rate of Change |
| IZ      | ARKIA ISRAELI AIRLINES | 210,815          | 56.15%        | 141,463          | 51.74%        | 49.02%         |
| 6H      | ISRAIR AIRLINES        | 164,082          | 43.70%        | 131,551          | 48.11%        | 24.72%         |
|         | OTHERS                 | 535              | 0.14%         | 388              | 0.14%         | 37.88%         |
|         | <b>TOTAL</b>           | <b>375,432</b>   |               | <b>273,402</b>   |               | <b>37.31%</b>  |





# Domestic Passenger Traffic

## Distribution by Destinations for August

| Destination  | August 2021   |               | August 2020   |               | Rate of Change |
|--------------|---------------|---------------|---------------|---------------|----------------|
|              | Passengers    | Rate of Total | Passengers    | Rate of Total |                |
| RAMON        | 69,744        | 99.86%        | 37,431        | 99.87%        | 86.32%         |
| OTHERS       | 93            | 0.13%         | 46            | 0.12%         | 102.17%        |
| <b>TOTAL</b> | <b>69,837</b> |               | <b>37,477</b> |               | <b>86.34%</b>  |

# Accumulated Domestic Passenger Traffic

## Distribution by Destinations

| Destination  | Accumulated 2021 |               | Accumulated 2020 |               | Rate of Change |
|--------------|------------------|---------------|------------------|---------------|----------------|
|              | Passengers       | Rate of Total | Passengers       | Rate of Total |                |
| RAMON        | 374,795          | 99.83%        | 272,045          | 99.50%        | 37.76%         |
| OTHERS       | 637              | 0.16%         | 1,357            | 0.49%         | <b>-53.05%</b> |
| <b>TOTAL</b> | <b>375,432</b>   |               | <b>273,402</b>   |               | <b>37.31%</b>  |

