



# Annual Report

## Ben Gurion International Airport

Year 2016



# Israel Airport Authority

## Ben Gurion International Airport

### Produced by the Industry & Management Department

**This report is protected by copyright and is the exclusive property of the Israel Airports Authority.**

**It must be emphasized that the data in the report are based on the reports of the airlines, and received under their responsibility.**

**The information is intended for personal use, and therefore may not be quoted or passed on to any third party without written permission from the Israel Airports Authority.**

**In addition, no commercial use may be made of this report.**

#### **Edit Yehoshua**

Activity Coordinator

Tel. +972-3-9752017

Email: [edity@iaa.gov.il](mailto:edity@iaa.gov.il)

#### **Rachel Lehava**

Manager, Industrial & Management Dep.

Tel. +972-3-9752019

Email: [rachelle@iaa.gov.il](mailto:rachelle@iaa.gov.il)

#### **Yossi Tzemach**

Head, Industrial & Management Dep.

Tel. +972-3-9752020

Email: [yossiz@iaa.gov.il](mailto:yossiz@iaa.gov.il)



Dear Activity partners and Customers, Employees and Managers of Ben-Gurion Airport and the Israel Airports Authority.

2016 was a peak year of international activity in passenger and aircraft traffic at Ben-Gurion Airport. This year Ben-Gurion Airport established itself as part of the international airports with medium activity volume exceeding traffic of 15 million passengers.

Passenger traffic which enjoys the fruits of the implementation of the "Open Skies" Agreement offers the consumers a volume of flights and destinations for unprecedented prices.

The increase of aircraft and passenger traffic obliges us to continue developing the infrastructures at Ben-Gurion Airport, offer new technologies, change procedures and continue to improve the passenger's experience. We will deal with all of the above during the year 2017, which will be marked by the absorption of new infrastructures such as Terminal 1 with a full departing passenger procedure (including opening a new commercial area) and the fourth concourse, construction of a new sorting system and continuing to improve the technologies in order to maximize passenger experience.

The past year was a year of multiple terror attacks in the world, among them aviation targets. We will continue to maintain a high level of security and establish Ben-Gurion Airport as the leading airport in security level.

The increase of activity volume obliges us also to continue to deal with safety at place of work, roads and aviation as a main item. Ben-Gurion Airport is committed to being a safe airport!

The service rendered to the customers, passengers and airlines will continue to serve as the value and purpose of our activities.

I would like to express my full appreciation to all our colleagues: airlines, concession holders, ground handling agents, activity partners, state authorities and especially to the devoted employees and managers of Ben-Gurion Airport.

We are all partners in the development of the international aviation in Israel.  
Thank you all!



Dear friends and partners,

I hereby respectfully submit for your review a report summarizing the aviation activity at Ben - Gurion International Airport in 2016.

During the year, a total of 17,936,810 passengers on 127,575 international and domestic flights passed through Ben- Gurion Airport.

International passenger traffic in 2016 totaled 17,342,146 passengers, representing an increase of 10.64% compared to 2015.

International aircraft traffic totaled 121,249 flights, representing an increase of 8.2% compared to 2015.

On domestic flights 594,664 passengers passed through Ben- Gurion Airport this year, compared with 625,221 in 2015, a decrease of 4.88%.

During the year cargo weighing a total 4.88 tons as handled, representing 315,699 of an increase% compared with 9.93 in 2015.

Israeli airlines carried 6,748,910 passengers in 2016, 38.91% of all travelers passing through Ben - Gurion Airport, an increase of 13.99% relative to the previous year.

Of the leading airlines that operated in Ben - Gurion Airport this year, the highest growth relative to 2015 was registered in the activity of AEROFLOT RUSSIAN AIRLINES, ISRAIR AIRLINES and ARKIA ISRAELI AIRLINES.

The Destination with the highest volume of activity was ISTANBUL-ATATURK, with a total of 831,524 passengers to and from, an increase of 12.09% compared to the previous year.

The country with the highest volume of activity was TURKEY, with 1,659,247 passengers, constituting 9.56% of all activity.

Of the leading countries, the highest growth relative to last year was recorded in passenger traffic to TURKEY, UKRAINE and NETHERLANDS.

Below you will find additional tables providing details about movements of aircraft, passengers and cargo at Ben - Gurion International Airport.

Sincerely yours,

**Shmuel Zakay**

Managing Director,

Ben-Gurion International Airport



# Content



## Aviation Activity

Aviation Activity Summary	1
International Activity Summary	2 - 3
Domestic Activity Summary	4



## International Activity

Distribution By Months	6 - 7
Distribution By Airlines	8 - 12
Distribution By Countries	13 - 15
Distribution By First Destination	16 - 20



## Cargo Activity

Distribution by Transporter	22
Distribution By Months	22
Distribution By Airlines	23 - 25
Distribution By Countries	26



## Domestic Activity

Distribution By Months	28 - 29
Distribution By Airlines	30





# Passengers and Aircrafts

## Aviation Activity at Ben Gurion International Airport

### International Activity

	Accumulated Since the beginning of the year		
	2016	2015	Rate Of Change
Incoming Aircraft	60,610	56,030	8.17%
Outgoing Aircraft	60,639	56,027	8.23%
<b>Total Aircraft</b>	<b>121,249</b>	<b>112,057</b>	<b>8.20%</b>
Incoming Passengers	8,671,913	7,828,175	10.77%
Outgoing Passengers	8,670,233	7,845,756	10.50%
Transit Passengers	2,095	2,423	-13.53%
<b>Total Passengers</b>	<b>17,342,146</b>	<b>15,673,931</b>	<b>10.64%</b>

### Domestic Activity

	Accumulated Since the beginning of the year		
	2016	2015	Rate Of Change
Aircraft	6,326	6,763	-6.46%
Passengers	594,664	625,221	-4.88%

### International and Domestic Activity Summary

	Accumulated Since the beginning of the year		
	2016	2015	Rate Of Change
Aircraft	127,575	118,820	7.36%
Passengers	17,936,810	16,299,152	10.04%





# Passengers and Aircrafts

## Int'l Aviation Activity at Ben Gurion International Airport by Flight Type

### Schedule and Charter Flights

	Accumulated Since the beginning of the year		
	2016	2015	Rate of Change
Incoming Aircraft	55,571	51,178	8.58%
Outgoing Aircraft	55,539	51,158	8.56%
<b>Total Aircraft</b>	<b>111,110</b>	<b>102,336</b>	<b>8.57%</b>
Incoming Passengers	8,657,880	7,815,954	10.77%
Outgoing Passengers	8,656,902	7,833,508	10.51%
Transit Passengers	2,095	2,423	<b>-13.53%</b>
<b>Total Passengers</b>	<b>17,314,782</b>	<b>15,649,462</b>	<b>10.64%</b>

### Private Flights

	Accumulated Since the beginning of the year		
	2016	2015	Rate of Change
Incoming Aircraft	2,541	2,479	2.50%
Outgoing Aircraft	2,571	2,477	3.79%
<b>Total Aircraft</b>	<b>5,112</b>	<b>4,956</b>	<b>3.14%</b>
Incoming Passengers	8,796	8,292	6.07%
Outgoing Passengers	8,412	8,139	3.35%
<b>Total Passengers</b>	<b>17,208</b>	<b>16,431</b>	<b>4.72%</b>





# Passengers and Aircrafts

## Int'l Aviation Activity at Ben Gurion International Airport by Flight Type

### Cargo Flights

	Accumulated Since the beginning of the year		
	2016	2015	Rate of Change
Incoming Aircraft	2,245	2,160	3.93%
Outgoing Aircraft	2,262	2,171	4.19%
<b>Total Aircraft</b>	<b>4,507</b>	<b>4,331</b>	<b>4.06%</b>
Incoming Passengers	1,032	1,004	2.78%
Outgoing Passengers	986	1,153	-14.48%
<b>Total Passengers</b>	<b>2,018</b>	<b>2,157</b>	<b>-6.44%</b>

### Other Flights

	Accumulated Since the beginning of the year		
	2016	2015	Rate of Change
Incoming Aircraft	253	213	18.77%
Outgoing Aircraft	267	221	20.81%
<b>Total Aircraft</b>	<b>520</b>	<b>434</b>	<b>19.81%</b>
Incoming Passengers	4,205	2,925	43.76%
Outgoing Passengers	3,933	2,956	33.05%
<b>Total Passengers</b>	<b>8,138</b>	<b>5,881</b>	<b>38.37%</b>







# Passengers and Aircrafts

## Domestic Aviation Activity at Ben Gurion International Airport by Flight Type

### Schedule Flights

	Accumulated Since the beginning of the year		
	2016	2015	Rate of Change
Aircraft	5,067	5,426	-6.61%
Passengers	593,062	624,038	-4.96%

### Private Flights

	Accumulated Since the beginning of the year		
	2016	2015	Rate of Change
Aircraft	527	649	-18.79%
Passengers	451	580	-22.24%

### Other Flights

	Accumulated Since the beginning of the year		
	2016	2015	Rate of Change
Aircraft	732	688	6.39%
Passengers	1,151	603	90.87%





# International Activity

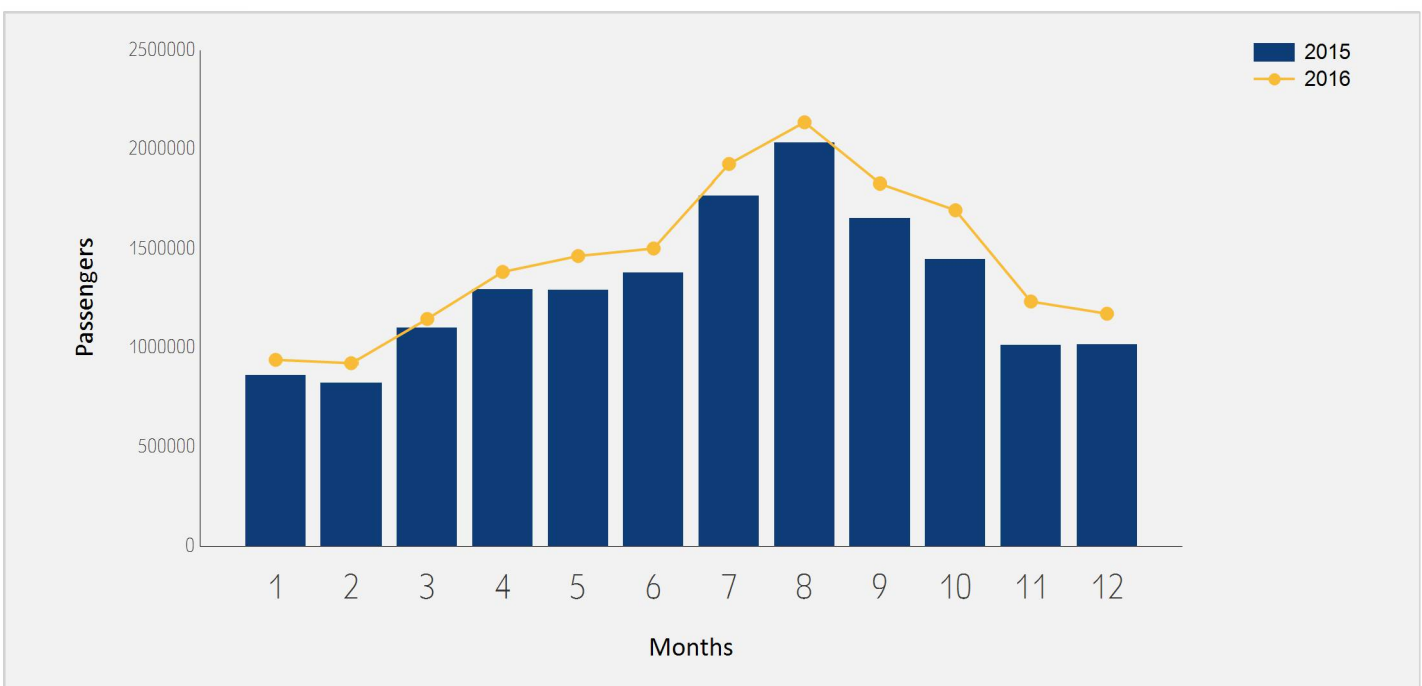




# International Passenger Traffic

## Distribution by Months

Months	2016	2015	Rate of Change
January	938,359	859,893	9.12%
February	921,682	820,807	12.28%
March	1,145,110	1,101,227	3.98%
April	1,382,882	1,293,771	6.88%
May	1,463,244	1,290,784	13.36%
June	1,501,474	1,379,844	8.81%
July	1,925,501	1,768,264	8.89%
August	2,136,279	2,032,266	5.11%
September	1,827,956	1,654,039	10.51%
October	1,694,793	1,447,356	17.09%
November	1,233,279	1,011,352	21.94%
December	1,171,587	1,014,328	15.50%
<b>Total</b>	<b>17,342,146</b>	<b>15,673,931</b>	<b>10.64%</b>

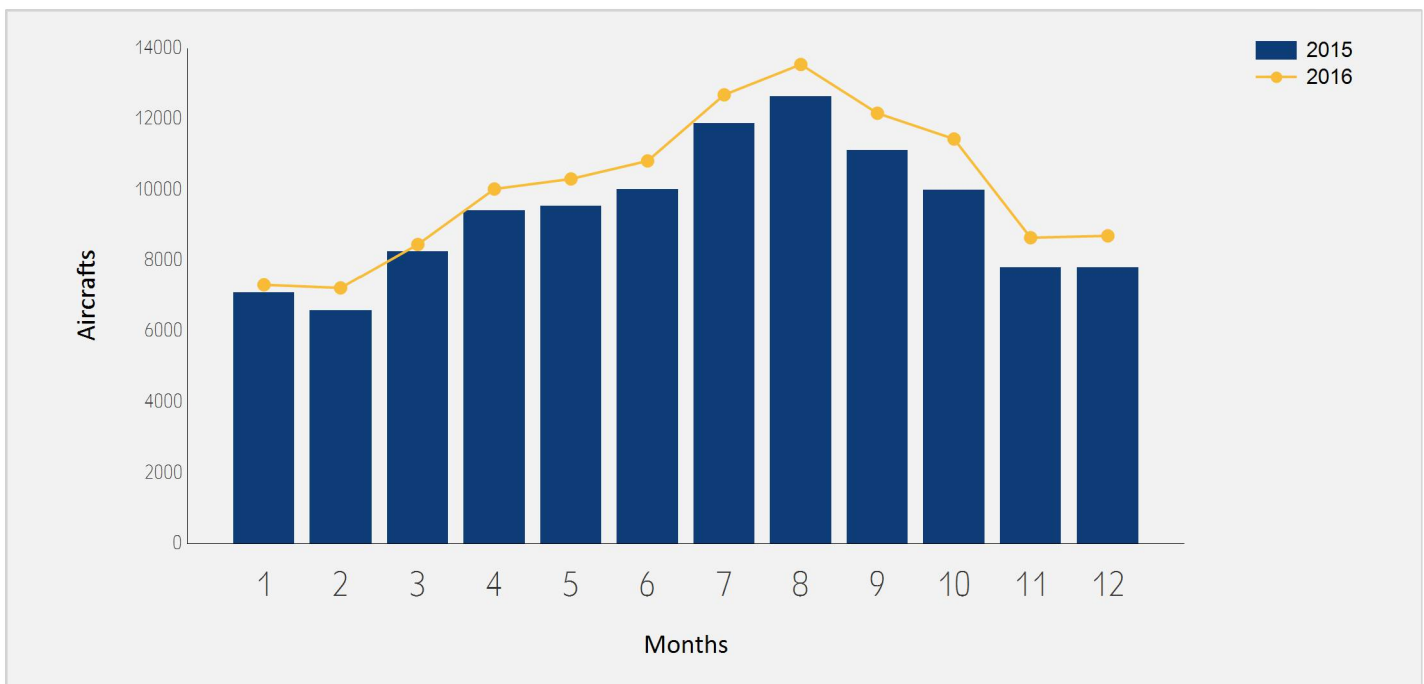




# International Aircraft Traffic

## Distribution by Months

Months	2016	2015	Rate of Change
January	7,306	7,087	3.09%
February	7,217	6,580	9.68%
March	8,446	8,248	2.40%
April	10,017	9,414	6.40%
May	10,302	9,529	8.11%
June	10,812	10,013	7.97%
July	12,683	11,867	6.87%
August	13,542	12,640	7.13%
September	12,162	11,105	9.51%
October	11,433	9,990	14.44%
November	8,638	7,785	10.95%
December	8,691	7,799	11.43%
<b>Total</b>	<b>121,249</b>	<b>112,057</b>	<b>8.20%</b>





# Int'l Accumulated Passenger Traffic

## Distribution by Airline

		Accumulated 2016		Accumulated 2015		
Airline		Passengers	Rate of Total	Passengers	Rate of Total	Rate of Change
LY	EL AL ISRAEL AIRLINES	5,542,823	31.96%	4,994,896	31.86%	10.96%
TK	TURKISH AIRLINES	929,445	5.35%	823,150	5.25%	12.91%
EZY	EASYJET	719,535	4.14%	635,230	4.05%	13.27%
SU	AEROFLOT RUSSIAN AIRLINES	702,972	4.05%	480,030	3.06%	46.44%
IZ	ARKIA ISRAELI AIRLINES	648,138	3.73%	499,379	3.18%	29.78%
6H	ISRAIR AIRLINES	548,106	3.16%	419,319	2.67%	30.71%
PS	UKRAINE INTL AIR	520,873	3.00%	416,878	2.65%	24.94%
LH	LUFTHANSA	490,793	2.83%	436,101	2.78%	12.54%
AZ	ALITALIA	449,079	2.58%	391,105	2.49%	14.82%
UA	UNITED AIRLINES	432,773	2.49%	361,569	2.30%	19.69%
A3	AEGEAN AIRLINES	408,320	2.35%	346,334	2.20%	17.89%
W6	WIZZAIR	402,748	2.32%	327,338	2.08%	23.03%
PC	PEGASUS AIRLINES	396,475	2.28%	410,826	2.62%	-3.49%
AF	AIR FRANCE	305,613	1.76%	307,953	1.96%	-0.75%
BA	BRITISH AIRWAYS PLC	297,711	1.71%	325,002	2.07%	-8.39%
LX	SWISS INT'L AIRLINES	283,800	1.63%	259,823	1.65%	9.22%
DL	DELTA AIRLINES	230,018	1.32%	198,411	1.26%	15.93%
OS	AUSTRIAN AIRLINES	222,347	1.28%	214,691	1.36%	3.56%
QS	TRAVEL SERVICE	212,609	1.22%	142,752	0.91%	48.93%
SN	BRUSSELS AIRLINES	173,469	1.00%	171,077	1.09%	1.39%
IB	IBERIA	167,469	0.96%	155,226	0.99%	7.88%





# Int'l Accumulated Passenger Traffic

## Distribution by Airline

		Accumulated 2016		Accumulated 2015		
Airline		Passengers	Rate of Total	Passengers	Rate of Total	Rate of Change
TO	TRANSAVIA FRANCE	159,477	0.91%	106,396	0.67%	49.89%
CAI	CORENDON AIRLINES	157,047	0.90%	109,546	0.69%	43.36%
AC	AIR CANADA	148,597	0.85%	127,019	0.81%	16.98%
AB	AIR-BERLIN	132,546	0.76%	190,844	1.21%	-30.54%
AEA	AIR EUROPA	129,486	0.74%	117,032	0.74%	10.64%
RO	TAROM - RUMANIAN AIR TRAN	121,294	0.69%	135,735	0.86%	-10.63%
KL	K.L.M.	120,215	0.69%	112,803	0.71%	6.57%
ET	ETHIOPIAN AIRLINES	119,383	0.68%	101,629	0.64%	17.46%
RJ	ROYAL JORDANIAN	109,623	0.63%	77,148	0.49%	42.09%
FV	RUSSIYA AIRLINES	107,780	0.62%	92,737	0.59%	16.22%
BUC	BULGARIAN AIR CHARTER	102,409	0.59%	104,913	0.66%	-2.38%
HV	TRANSAVIA	99,036	0.57%	38,604	0.24%	156.54%
NO	NEOS	96,931	0.55%	65,130	0.41%	48.82%
FB	BULGARIA AIR	96,763	0.55%	88,981	0.56%	8.74%
ENT	ENTER AIR	92,972	0.53%	84,001	0.53%	10.67%
VY	VUELING AIRLINES S.A.	83,895	0.48%	76,752	0.48%	9.30%
A9	GEORGIAN AIRWAYS	75,032	0.43%	62,023	0.39%	20.97%
LO	LOT POLISH AIRLINES	75,026	0.43%	47,901	0.30%	56.62%
TWI	TAILWIND AIRLINES	72,048	0.41%	47,580	0.30%	51.42%
ZB	MONARCH AIRLINES LTD	68,211	0.39%	3,119	0.01%	
DY	NORWEGIAN AIR SHUTTLE ASA	64,194	0.37%	84,811	0.54%	-24.30%





# Int'l Accumulated Passenger Traffic

## Distribution by Airline

		Accumulated 2016		Accumulated 2015		
Airline		Passengers	Rate of Total	Passengers	Rate of Total	Rate of Change
KE	KOREAN AIR	53,742	0.30%	53,230	0.33%	0.96%
HU	HAINAN AIRLINES Co. Ltd	49,691	0.28%			
ST	GERMANIA FLUGGESELLSCHAFT	49,205	0.28%	23,948	0.15%	105.46%
OB	BLUE AIR TRANSPORT AERIAN	48,971	0.28%	35,583	0.22%	37.62%
B2	BELAVIA AIRLINE	48,850	0.28%	41,042	0.26%	19.02%
HY	UZBEKISTAN AIR	47,493	0.27%	38,839	0.24%	22.28%
FHY	FREE BIRD AIRLINES	43,517	0.25%	46,333	0.29%	-6.07%
8Q	ONUR AIR	42,898	0.24%	76,703	0.48%	-44.07%
JU	AIR SERBIA	40,624	0.23%	40,648	0.25%	-0.05%
AY	FINNAIR	35,888	0.20%	30,322	0.19%	18.35%
KM	AIR MALTA	33,711	0.19%	45,452	0.28%	-25.83%
BVL	BUL AIR LTD	31,712	0.18%			
TB	JET AIRFLY	29,640	0.17%			
4D	AIR SINAI	29,010	0.16%	23,158	0.14%	25.26%
BT	AIR BALTIC	28,698	0.16%	18,846	0.12%	52.27%
M4	MISTRAL AIR	28,636	0.16%	40,685	0.25%	-29.61%
J2	AZERBAIJAN AIRLINES	27,415	0.15%	17,893	0.11%	53.21%
KK	ATLAS GLOBAL	23,283	0.13%	15,784	0.10%	47.51%
U8	TUS AIRWAYS	22,562	0.13%			
P7	SMALL PLANET AIRLINES POL	20,922	0.12%	13,535	0.08%	54.57%
7O	TRAVEL SERVICE BUDAPEST	18,990	0.10%	20,598	0.13%	-7.80%





# Int'l Accumulated Passenger Traffic

## Distribution by Airline

		Accumulated 2016		Accumulated 2015		
Airline		Passengers	Rate of Total	Passengers	Rate of Total	Rate of Change
OU	CROATIA AIR	18,802	0.10%	17,154	0.10%	9.60%
TQ	TANDEM AERO	18,417	0.10%	19,259	0.12%	-4.37%
	OTHERS	232,388	1.34%	863,125	5.50%	-73.07%
TOTAL		17,342,146		15,673,931		10.64%







# Int'l Accumulated Passenger Traffic

## Distribution by Israeli Airlines

		Accumulated 2016		Accumulated 2015		
	Airlines	Passengers	Rate of Total	Passengers	Rate of Total	Rate of Change
LY	EL AL ISRAEL AIRLINES	5,542,823	31.96%	4,994,896	31.86%	10.96%
IZ	ARKIA ISRAELI AIRLINES	648,138	3.73%	499,379	3.18%	29.78%
6H	ISRAIR AIRLINES	548,106	3.16%	419,319	2.67%	30.71%
	OTHERS	9,843	0.05%	6,649	0.04%	48.03%
	<b>TOTAL</b>	<b>6,748,910</b>		<b>5,920,243</b>		<b>13.99%</b>





# Int'l Accumulated Passenger Traffic

## Distribution by Countries

Countries	Accumulated 2016		Accumulated 2015		
	Passengers	Rate of Total	Passengers	Rate of Total	Rate of Change
TURKEY	1,659,247	9.56%	1,518,511	9.68%	9.26%
UNITED STATES	1,457,869	8.40%	1,470,594	9.38%	-0.86%
GERMANY	1,275,620	7.35%	1,218,012	7.77%	4.72%
ITALY	1,157,928	6.67%	1,063,244	6.78%	8.90%
FRANCE	1,097,311	6.32%	1,033,212	6.59%	6.20%
RUSSIAN FEDERATION	1,074,954	6.19%	1,012,510	6.45%	6.16%
UNITED KINGDOM	1,051,770	6.06%	994,337	6.34%	5.77%
GREECE	1,000,523	5.76%	909,574	5.80%	9.99%
SPAIN	816,550	4.70%	723,090	4.61%	12.92%
UKRAINE	741,381	4.27%	592,624	3.78%	25.10%
SWITZERLAND	653,496	3.76%	601,532	3.83%	8.63%
ROMANIA	521,586	3.00%	430,891	2.74%	21.04%
NETHERLANDS	512,042	2.95%	391,714	2.49%	30.71%
CZECH REPUBLIC	375,135	2.16%	317,125	2.02%	18.29%
BULGARIA	372,986	2.15%	313,540	2.00%	18.95%
POLAND	357,718	2.06%	299,724	1.91%	19.34%
CYPRUS	355,143	2.04%	249,090	1.58%	42.57%
AUSTRIA	340,366	1.96%	326,811	2.08%	4.14%
HUNGARY	301,053	1.73%	273,584	1.74%	10.04%
BELGIUM	282,460	1.62%	290,886	1.85%	-2.89%
CHINA	219,919	1.26%	177,139	1.13%	24.15%
CANADA	215,481	1.24%	186,992	1.19%	15.23%





# Int'l Accumulated Passenger Traffic

## Distribution by Countries

Countries	Accumulated 2016		Accumulated 2015		
	Passengers	Rate of Total	Passengers	Rate of Total	Rate of Change
THAILAND	198,140	1.14%	210,685	1.34%	-5.95%
GEORGIA	194,153	1.11%	119,494	0.76%	62.47%
ETHIOPIA	119,459	0.68%	100,247	0.63%	19.16%
JORDAN	114,554	0.66%	90,393	0.57%	26.72%
INDIA	61,251	0.35%	60,507	0.38%	1.22%
BELARUS	56,863	0.32%	41,288	0.26%	37.72%
PORTUGAL	56,139	0.32%	34,918	0.22%	60.77%
CROATIA	54,955	0.31%	43,877	0.27%	25.24%
SERBIA	54,447	0.31%	40,646	0.25%	33.95%
SOUTH KOREA	53,750	0.30%	53,245	0.33%	0.94%
SOUTH AFRICA	53,562	0.30%	47,931	0.30%	11.74%
UZBEKISTAN	47,532	0.27%	38,865	0.24%	22.30%
FINLAND	46,625	0.26%	37,320	0.23%	24.93%
LATVIA	46,093	0.26%	19,215	0.12%	139.88%
TANZANIA	41,037	0.23%	18,976	0.12%	116.25%
DENMARK	36,690	0.21%	71,281	0.45%	-48.52%
MALTA	34,903	0.20%	46,468	0.29%	-24.88%
EGYPT	34,836	0.20%	36,718	0.23%	-5.12%
LITHUANIA	33,039	0.19%	34,946	0.22%	-5.45%
SWEDEN	31,526	0.18%	41,053	0.26%	-23.20%
AZERBAIJAN	27,756	0.16%	18,037	0.11%	53.88%
SLOVENIA	25,526	0.14%	22,416	0.14%	13.87%





# Int'l Accumulated Passenger Traffic

## Distribution by Countries

Countries	Accumulated 2016		Accumulated 2015		Rate of Change
	Passengers	Rate of Total	Passengers	Rate of Total	
MOLDOVA	18,740	0.10%	19,342	0.12%	-3.11%
MONTENEGRO	18,672	0.10%	45		
SLOVAKIA	12,996	0.07%	11,606	0.07%	11.97%
MACEDONIA	8,375	0.04%	3		
IRELAND	6,619	0.03%	5,079	0.03%	30.32%
SEYCHELLES	6,383	0.03%	3,791	0.02%	68.37%
OTHERS	6,987	0.04%	10,803	0.06%	-35.32%
<b>TOTAL</b>	<b>17,342,146</b>		<b>15,673,931</b>		<b>10.64%</b>





# Int'l Accumulated Passenger Traffic

## Distribution by First Destination

Destination	Accumulated 2016		Accumulated 2015		
	Passengers	Rate of Total	Passengers	Rate of Total	Rate of Change
ISTANBUL-ATATURK	831,524	4.79%	741,810	4.73%	12.09%
PARIS-CHARLES DE GAULLE	821,411	4.73%	799,922	5.10%	2.68%
MOSCOW	703,220	4.05%	480,352	3.06%	46.39%
NEW YORK - J.F.KENNEDY	695,805	4.01%	656,106	4.18%	6.05%
ROME - FIUMICINO	680,462	3.92%	620,036	3.95%	9.74%
LONDON - HEATHROW	568,021	3.27%	583,613	3.72%	-2.67%
KIEV,KYIV-BORISPOL	556,345	3.20%	481,108	3.06%	15.63%
NEW YORK - NEWARK	525,882	3.03%	517,150	3.29%	1.68%
AMSTERDAM	512,035	2.95%	391,695	2.49%	30.72%
FRANKFURT	495,898	2.85%	432,301	2.75%	14.71%
BUCHAREST - OTOPENI	443,963	2.56%	372,994	2.37%	19.02%
ZURICH	436,753	2.51%	395,142	2.52%	10.53%
ISTANBUL-SABIHA GOKCHEN	409,022	2.35%	415,756	2.65%	-1.61%
ANTALYA	401,632	2.31%	353,838	2.25%	13.50%
BARCELONA	399,659	2.30%	383,050	2.44%	4.33%
LUTON	375,832	2.16%	321,152	2.04%	17.02%
PRAGUE-RUZYNE	374,838	2.16%	316,962	2.02%	18.25%
MADRID	374,331	2.15%	316,431	2.01%	18.29%
LARNACA	337,729	1.94%	235,829	1.50%	43.20%
VIENNA	336,223	1.93%	322,485	2.05%	4.26%
BUDAPEST	301,052	1.73%	273,576	1.74%	10.04%
MUNICH	294,947	1.70%	265,776	1.69%	10.97%





# Int'l Accumulated Passenger Traffic

## Distribution by First Destination

Destination	Accumulated 2016		Accumulated 2015		
	Passengers	Rate of Total	Passengers	Rate of Total	Rate of Change
BERLIN -SCHOENEFELD	281,279	1.62%	268,815	1.71%	4.63%
HERAKLION	277,767	1.60%	289,477	1.84%	-4.04%
RHODES-PARADISI	269,703	1.55%	232,275	1.48%	16.11%
WARSAW	268,938	1.55%	213,687	1.36%	25.85%
BRUSSELS	267,680	1.54%	289,138	1.84%	-7.42%
ELEFTHERIOS VENIZELOS	253,442	1.46%	197,091	1.25%	28.59%
MILAN-MALPENSA	248,116	1.43%	231,056	1.47%	7.38%
MOSCOW-DOMODEDOVO	226,579	1.30%	243,214	1.55%	-6.83%
TORONTO	215,163	1.24%	186,741	1.19%	15.22%
BANGKOK INTL.-SUARNABHUM	198,140	1.14%	210,685	1.34%	-5.95%
GENEVA	145,413	0.83%	135,816	0.86%	7.06%
BURGAS	144,563	0.83%	129,173	0.82%	11.91%
SOFIA	137,483	0.79%	111,009	0.70%	23.84%
BERLIN TEGEL	135,503	0.78%	149,283	0.95%	-9.23%
TBILISI	135,434	0.78%	100,166	0.63%	35.20%
PARIS-ORLY	131,670	0.75%	80,779	0.51%	63.00%
ADDIS ABABA	119,459	0.68%	100,247	0.63%	19.16%
HONG KONG INT'L	118,335	0.68%	124,985	0.79%	-5.32%
AMMAN (QUEEN ALIA INT'L)	112,747	0.65%	88,516	0.56%	27.37%
LOS ANGELES	107,597	0.62%	103,990	0.66%	3.46%
ST. PETERSBURG	103,388	0.59%	95,125	0.60%	8.68%
BEIJING	101,517	0.58%	52,151	0.33%	94.65%





# Int'l Accumulated Passenger Traffic

## Distribution by First Destination

Destination	Accumulated 2016		Accumulated 2015		
	Passengers	Rate of Total	Passengers	Rate of Total	Rate of Change
ODESSA	88,068	0.50%	49,575	0.31%	77.64%
VARNA	85,969	0.49%	71,001	0.45%	21.08%
KATOWICE	78,870	0.45%	78,529	0.50%	0.43%
VILAFRANCA-VERONA	77,993	0.44%	86,316	0.55%	-9.64%
KOS	73,057	0.42%	57,451	0.36%	27.16%
SAN FRANCISCO	71,253	0.41%			
BASEL	71,218	0.41%	70,353	0.44%	1.22%
MARSEILLE	66,565	0.38%	61,960	0.39%	7.43%
MUMBAI	61,251	0.35%	60,405	0.38%	1.40%
MANCHESTER	61,141	0.35%	35,161	0.22%	73.88%
BATUMI	58,479	0.33%	18,973	0.12%	208.22%
MINSK	56,863	0.32%	41,278	0.26%	37.75%
BELGRADE	54,447	0.31%	40,646	0.25%	33.95%
INCHEON INTL AIRPORT	53,750	0.30%	53,230	0.33%	0.97%
JOHANNESBURG	53,532	0.30%	47,910	0.30%	11.73%
BOSTON-LOGAN INT	53,024	0.30%	27,642	0.17%	91.82%
LISBON	50,664	0.29%	27,834	0.17%	82.02%
VENICE	49,823	0.28%	42,272	0.26%	17.86%
TASHKENT	47,532	0.27%	38,863	0.24%	22.30%
RIGA	46,093	0.26%	19,215	0.12%	139.88%
LONDON - GATWICK	45,474	0.26%	53,123	0.33%	-14.39%
ZAGREB	38,788	0.22%	26,549	0.16%	46.09%





# Int'l Accumulated Passenger Traffic

## Distribution by First Destination

Destination	Accumulated 2016		Accumulated 2015		
	Passengers	Rate of Total	Passengers	Rate of Total	Rate of Change
CATANIA FONTANAROSSA	37,334	0.21%	32,933	0.21%	13.36%
HELSINKI	37,213	0.21%	32,667	0.20%	13.91%
COPENHAGEN KASTRUP	36,683	0.21%	71,279	0.45%	-48.53%
ZANZIBAR	36,122	0.20%	14,714	0.09%	145.49%
MALTA	34,903	0.20%	46,468	0.29%	-24.88%
CLUJ NAPOCA	33,998	0.19%	28,126	0.17%	20.87%
IASI	33,843	0.19%	18,609	0.11%	81.86%
VILNIUS INTL	32,855	0.18%	34,617	0.22%	-5.08%
NICE	31,666	0.18%	39,206	0.25%	-19.23%
STOCKHOLM-ARLANDA	31,147	0.17%	40,266	0.25%	-22.64%
NAPLES-CAPODICHINO	30,621	0.17%	17,714	0.11%	72.86%
CAIRO INTERNATIONAL	29,409	0.16%	24,883	0.15%	18.18%
KHARKOV	28,861	0.16%	10,554	0.06%	173.46%
DUSSELDORF	28,496	0.16%	47,124	0.30%	-39.52%
LYON - SATOLAS	27,910	0.16%	31,524	0.20%	-11.46%
BAKU HEYDAR ALIYEV INT'L	27,748	0.16%	18,018	0.11%	54.00%
THESSALONIKI	26,469	0.15%	19,254	0.12%	37.47%
ZAKYNTHOS	26,075	0.15%	20,333	0.12%	28.23%
LJUBLJANA	25,526	0.14%	22,416	0.14%	13.87%
LVOV	22,802	0.13%	9,532	0.06%	139.21%
CORFU	22,684	0.13%	26,947	0.17%	-15.81%
DNEPROPETROVSK	22,682	0.13%	24,109	0.15%	-5.91%







# Int'l Accumulated Passenger Traffic

## Distribution by First Destination

Destination	Accumulated 2016		Accumulated 2015		
	Passengers	Rate of Total	Passengers	Rate of Total	Rate of Change
MIKONOS	21,348	0.12%	16,807	0.10%	27.01%
ROSTOV	20,240	0.11%	20,167	0.12%	0.36%
VALENCIA	19,062	0.10%	881		
HAMBURG	18,851	0.10%	12,641	0.08%	49.12%
KISHINEV	18,740	0.10%	19,342	0.12%	-3.11%
PAPHOS	17,414	0.10%	13,256	0.08%	31.36%
TIVAT	15,713	0.09%	24		
STUTTGART	15,476	0.08%	12,012	0.07%	28.83%
GRENOBLE-SAUNT GEOIRS	13,868	0.07%	9,790	0.06%	41.65%
LIEGE	13,063	0.07%	1,674	0.01%	680.34%
DALAMAN	12,147	0.07%	6,498	0.04%	86.93%
VINITSA	11,455	0.06%	4,270	0.02%	168.26%
KIEV-ZHULYANY	11,146	0.06%	13,451	0.08%	-17.13%
KARPATOS	10,065	0.05%	9,715	0.06%	3.60%
OTHERS	238,157	1.37%	583,311	3.72%	-59.17%
<b>TOTAL</b>	<b>17,342,146</b>		<b>15,673,931</b>		<b>10.64%</b>



# Cargo Activity





# Cargo Handling

## Distribution by Transporter

Transporter	2016 (Ton)	2015 (Ton)	Rate of Change
Cargo on Passenger Aircrafts - Incoming	69,687	59,373	17.37%
Cargo on Passenger Aircrafts - Outgoing	69,787	67,241	3.78%
<b>Total Cargo on Passenger Aircrafts</b>	<b>139,473</b>	<b>126,616</b>	<b>10.15%</b>
Cargo on Cargo Aircrafts - Incoming	102,810	93,536	9.91%
Cargo on Cargo Aircrafts - Outgoing	73,418	67,030	9.53%
<b>Total Cargo on Cargo Aircrafts</b>	<b>176,226</b>	<b>160,565</b>	<b>9.75%</b>
<b>Total</b>	<b>315,699</b>	<b>287,181</b>	<b>9.93%</b>

## Distribution by Months

Month	2016 (Ton)	2015 (Ton)	Rate of Change
January	25,108	22,377	12.20%
February	25,006	23,599	5.96%
March	28,073	27,560	1.86%
April	26,562	22,603	17.51%
May	24,871	25,032	-0.64%
June	24,834	23,087	7.56%
July	25,549	22,529	13.40%
August	26,506	23,702	11.83%
September	26,947	21,490	25.39%
October	22,921	22,830	0.39%
November	27,961	25,500	9.65%
December	31,361	26,872	16.70%
<b>Total</b>	<b>315,699</b>	<b>287,181</b>	<b>9.93%</b>





# Accumulated Cargo Handling on Passengers Aircrafts

## Distribution by Airline

		Accumulated 2016				Accumulated 2015				
Airline		Incoming Cargo (Ton)	Outgoing Cargo (Ton)	Cargo (Ton)	Rate of Total	Incoming Cargo (Ton)	Outgoing Cargo (Ton)	Cargo (Ton)	Rate of Total	Rate of Change
LY	EL AL ISRAEL AIRLINES	26,409	30,484	56,894	40.79%	24,695	31,742	56,437	44.57%	0.80%
UA	UNITED AIRLINES	5,753	8,960	14,713	10.54%	4,792	7,624	12,415	9.80%	18.50%
LX	SWISS INT'L AIRLINES	7,496	5,926	13,422	9.62%	5,966	5,239	11,205	8.84%	19.78%
TK	TURKISH AIRLINES	7,288	2,942	10,230	7.33%	5,194	1,732	6,927	5.47%	47.68%
BA	BRITISH AIRWAYS PLC	3,630	3,850	7,480	5.36%	2,650	3,199	5,849	4.61%	27.88%
DL	DELTA AIRLINES	2,811	4,316	7,127	5.10%	2,543	3,584	6,127	4.83%	16.32%
SU	AEROFLOT RUSSIAN AIRLINES	4,443	2,681	7,124	5.10%	2,220	2,294	4,513	3.56%	57.85%
AC	AIR CANADA	2,020	2,795	4,815	3.45%	1,262	1,978	3,241	2.55%	48.56%
LH	LUFTHANSA	1,191	1,008	2,200	1.57%	1,240	1,015	2,254	1.78%	-2.39%
KE	KOREAN AIR	1,176	938	2,114	1.51%	1,228	950	2,178	1.72%	-2.93%
IB	IBERIA	1,041	1,066	2,107	1.51%	769	940	1,709	1.34%	23.28%
HU	HAINAN AIRLINES Co. Ltd	1,095	825	1,921	1.37%					
PC	PEGASUS AIRLINES	765	505	1,271	0.91%	588	536	1,124	0.88%	13.07%
SN	BRUSSELS AIRLINES	736	210	946	0.67%	810	219	1,030	0.81%	-8.15%
HY	UZBEKISTAN AIR	400	474	874	0.62%	359	627	986	0.77%	-11.35%
RJ	ROYAL JORDANIAN	750	93	842	0.60%	557	97	653	0.51%	28.94%
PS	UKRAINE INTL AIR	282	539	821	0.58%	229	566	795	0.62%	3.27%
RO	TAROM - RUMANIAN AIR TRAN	339	372	710	0.50%	513	654	1,167	0.92%	-39.16%
AF	AIR FRANCE	234	243	477	0.34%	141	252	393	0.31%	21.37%
QS	TRAVEL SERVICE	309	159	467	0.33%	205	100	305	0.24%	53.11%
OS	AUSTRIAN AIRLINES	254	208	462	0.33%	324	396	721	0.56%	-35.92%
AZ	ALITALIA	190	129	319	0.22%	150	196	346	0.27%	-7.80%





# Accumulated Cargo Handling on Passengers Aircrafts

## Distribution by Airline

		Accumulated 2016				Accumulated 2015				
Airline		Incoming Cargo (Ton)	Outgoing Cargo (Ton)	Cargo (Ton)	Rate of Total	Incoming Cargo (Ton)	Outgoing Cargo (Ton)	Cargo (Ton)	Rate of Total	Rate of Change
ET	ETHIOPIAN AIRLINES	48	232	280	0.20%	45	221	265	0.20%	5.66%
A3	AEGEAN AIRLINES	205	60	265	0.18%	206	27	233	0.18%	13.73%
LO	LOT POLISH AIRLINES	176	36	212	0.15%	177	56	233	0.18%	-9.01%
FV	RUSSIYA AIRLINES	35	155	190	0.13%	27	153	180	0.14%	5.55%
J2	AZERBAIJAN AIRLINES	139	38	177	0.12%	35	27	62	0.04%	185.48%
KL	K.L.M.	149	28	176	0.12%	128	30	159	0.12%	10.69%
	OTHERS	323	516	839	0.60%	2,319	2,788	5,107	4.03%	-83.57%
	<b>TOTAL</b>	<b>69,688</b>	<b>69,786</b>	<b>139,474</b>		<b>59,373</b>	<b>67,242</b>	<b>126,615</b>		<b>10.15%</b>





# Accumulated Cargo Handling on Cargo Aircrafts

## Distribution by Airline

		Accumulated 2016				Accumulated 2015				
Airline		Incoming Cargo (Ton)	Outgoing Cargo (Ton)	Cargo (Ton)	Rate of Total	Incoming Cargo (Ton)	Outgoing Cargo (Ton)	Cargo (Ton)	Rate of Total	Rate of Change
ICL	C.A.L ISRAELI CARGO	31,675	19,806	51,480	29.21%	32,128	19,089	51,217	31.89%	0.51%
LY	EL AL ISRAEL AIRLINES	26,236	14,183	40,418	22.93%	23,082	14,458	37,540	23.37%	7.66%
MNB	MNG CARGO AIRLINES	9,830	5,419	15,250	8.65%	8,421	4,656	13,077	8.14%	16.61%
AZG	SILK WAY WEST AIRLINES	5,561	8,454	14,015	7.95%	930	4,003	4,933	3.07%	184.10%
LH	LUFTHANSA	6,987	5,550	12,537	7.11%	7,410	5,586	12,996	8.09%	-3.53%
BCS	EUROPEAN AIR TRANSPORT	6,517	5,270	11,786	6.68%	6,158	5,070	11,229	6.99%	4.96%
TK	TURKISH AIRLINES	5,747	4,543	10,290	5.83%	5,798	4,208	10,006	6.23%	2.83%
FX	FEDERAL EXPRESS	4,279	4,608	8,887	5.04%	4,229	4,437	8,666	5.39%	2.55%
3V	TNT AIRWAYS S.A.	2,990	2,097	5,087	2.88%	1,970	1,797	3,768	2.34%	35.00%
K4	KALITTA AIR	2,108	1,516	3,624	2.05%	1,179	723	1,903	1.18%	90.43%
KE	KOREAN AIR	443	689	1,132	0.64%	576	1,328	1,904	1.18%	-40.54%
RJ	ROYAL JORDANIAN	64	212	276	0.15%	467	542	1,010	0.62%	-72.67%
9T	ACT AIRLINES Inc.		224	224	0.12%					
HY	UZBEKISTAN AIR		199	199	0.11%		2	2		
	OTHERS	373	649	1,022	0.57%	1,185	1,130	2,315	1.44%	-55.85%
	<b>TOTAL</b>	<b>102,809</b>	<b>73,419</b>	<b>176,228</b>		<b>93,534</b>	<b>67,030</b>	<b>160,565</b>		<b>9.75%</b>





# Accumulated Cargo Handling on Cargo Aircrafts

## Distribution by Countries

Countries	Accumulated 2016				Accumulated 2015				
	Incoming Cargo (Ton)	Outgoing Cargo (Ton)	Cargo (Ton)	Rate of Total	Incoming Cargo (Ton)	Outgoing Cargo (Ton)	Cargo (Ton)	Rate of Total	Rate of Change
BELGIUM	52,477	35,558	88,036	49.95%	46,404	35,208	81,613	50.82%	7.87%
GERMANY	22,599	5,673	28,271	16.04%	20,108	4,813	24,922	15.52%	13.43%
TURKEY	9,771	13,989	23,760	13.48%	9,322	13,448	22,770	14.18%	4.34%
AZERBAIJAN	5,569	8,318	13,888	7.88%	941	4,024	4,966	3.09%	179.66%
CYPRUS	7,010	4	7,014	3.98%	8,349		8,349	5.19%	-15.98%
ITALY	43	5,014	5,057	2.86%	676	5,081	5,757	3.58%	-12.15%
FRANCE	1,098	1,113	2,210	1.25%	1,039	1,046	2,085	1.29%	5.99%
AUSTRIA	7	1,754	1,761	0.99%	237	765	1,002	0.62%	75.74%
UNITED STATES	1,115		1,115	0.63%	2,177	11	2,188	1.36%	-49.04%
SOUTH KOREA	476	551	1,027	0.58%	540	1,219	1,759	1.09%	-41.61%
SWITZERLAND	779		779	0.44%	91	8	100	0.06%	679.00%
JORDAN	145	490	635	0.36%	473	575	1,048	0.65%	-39.40%
LITHUANIA	569	44	613	0.34%	617	21	637	0.39%	-3.76%
HUNGARY	325	41	367	0.20%	384	41	425	0.26%	-13.64%
SPAIN	278	31	309	0.17%	26	4	30	0.01%	930.00%
UNITED KINGDOM	255	10	264	0.14%	1,682		1,682	1.04%	-84.30%
RUSSIAN FEDERATION	77	151	227	0.12%		77	77	0.04%	194.80%
UZBEKISTAN		199	199	0.11%		81	81	0.05%	145.67%
OTHERS	218	479	697	0.39%	468	606	1,074	0.66%	-35.10%
<b>TOTAL</b>	<b>102,809</b>	<b>73,419</b>	<b>176,228</b>		<b>93,534</b>	<b>67,030</b>	<b>160,565</b>		<b>9.75%</b>



# Domestic Activity



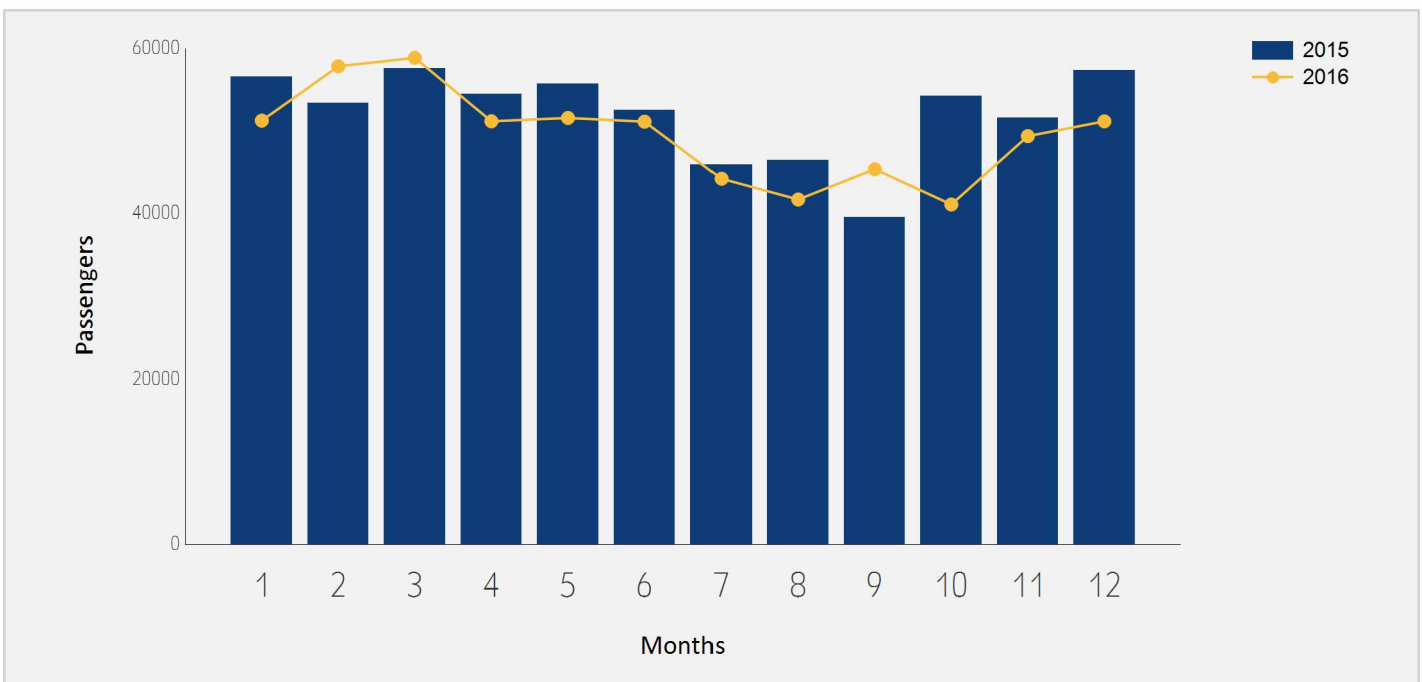




# Domestic Passenger Traffic

## Distribution by Months

Month	2016	2015	Rate of Change
January	51,247	56,523	-9.33%
February	57,830	53,358	8.38%
March	58,853	57,544	2.27%
April	51,166	54,477	-6.07%
May	51,573	55,700	-7.40%
June	51,118	52,480	-2.59%
July	44,204	45,910	-3.71%
August	41,690	46,486	-10.31%
September	45,364	39,554	14.68%
October	41,088	54,247	-24.25%
November	49,370	51,619	-4.35%
December	51,161	57,323	-10.74%
<b>Total</b>	<b>594,664</b>	<b>625,221</b>	<b>-4.88%</b>

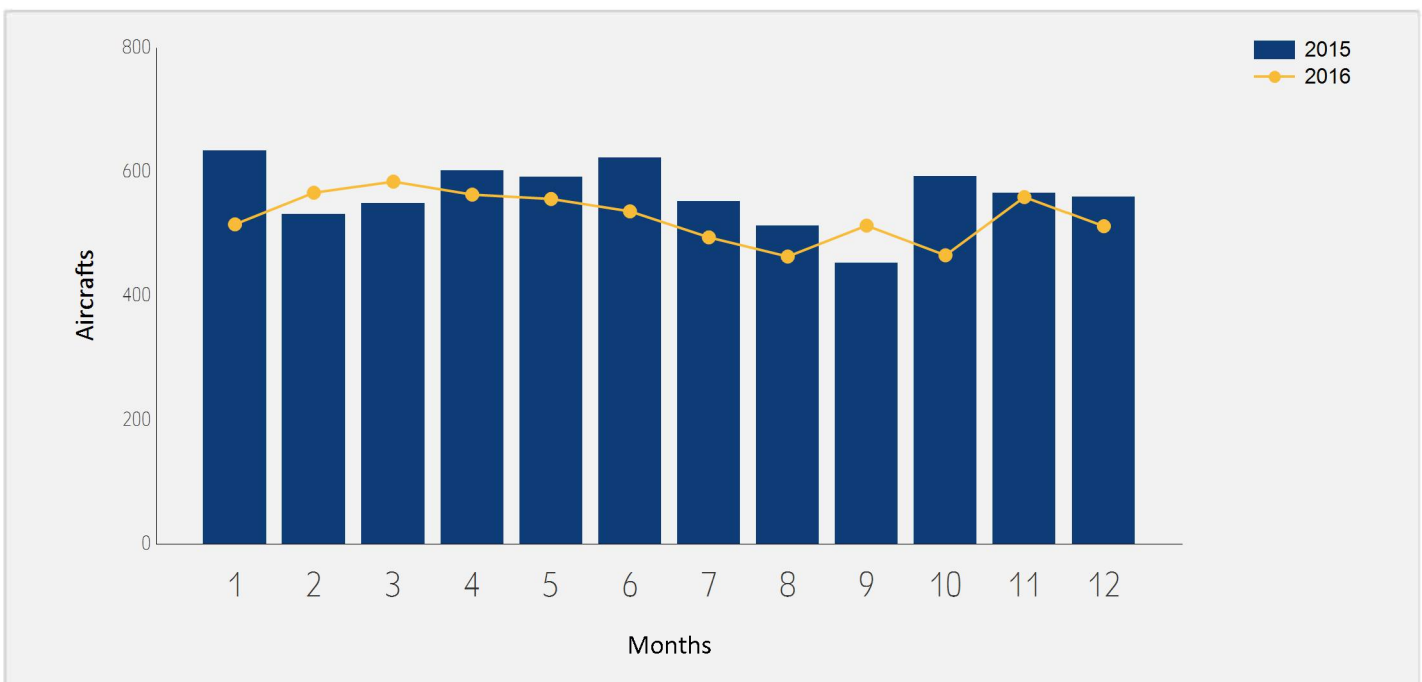




# Domestic Aircrafts Traffic

## Distribution by Months

Month	2016	2015	Rate of Change
January	515	634	-18.76%
February	566	531	6.59%
March	584	549	6.37%
April	563	602	-6.47%
May	556	591	-5.92%
June	536	623	-13.96%
July	494	552	-10.50%
August	463	513	-9.74%
September	513	452	13.49%
October	465	592	-21.45%
November	559	565	-1.06%
December	512	559	-8.40%
<b>Total</b>	<b>6,326</b>	<b>6,763</b>	<b>-6.46%</b>





# Accumulated Domestic Passengers Traffic

## Distribution by Airlines

		Accumulated 2016		Accumulated 2015		
Airline		Passengers	Rate of Total	Passengers	Rate of Total	Rate of Change
IZ	ARKIA ISRAELI AIRLINES	408,533	68.69%	420,870	67.31%	-2.93%
6H	ISRAIR AIRLINES	185,179	31.14%	203,564	32.55%	-9.03%
	OTHERS	952	0.16%	787	0.12%	20.96%
	<b>TOTAL</b>	<b>594,664</b>		<b>625,221</b>		<b>-4.88%</b>

## Distribution by Destinations

		Accumulated 2016		Accumulated 2015		
Destination		Passengers	Rate of Total	Passengers	Rate of Total	Rate of Change
	EILAT-J.HOZMAN	582,261	97.91%	611,994	97.88%	-4.85%
	OTHERS	12,403	2.08%	13,227	2.11%	-6.22%
	<b>TOTAL</b>	<b>594,664</b>		<b>625,221</b>		<b>-4.88%</b>

