

# Monthly Report

Ben Gurion International Airport

December 2021



# Israel Airport Authority

## Ben Gurion International Airport

### Produced by the Industry & Management Department

**This report is protected by copyright and is the exclusive property of the Israel Airports Authority.**

**It must be emphasized that the data in the report are based on the reports of the airlines, and received under their responsibility.**

**The information is intended for personal use, and therefore may not be quoted or passed on to any third party without written permission from the Israel Airports Authority.**

**In addition, no commercial use may be made of this report.**

#### **Edit Yehoshua**

Activity Coordinator

Tel. +972-3-9752017

Email: [edity@iaa.gov.il](mailto:edity@iaa.gov.il)

#### **Rachel Lehava**

Manager, Industrial & Management Dep.

Tel. +972-3-9752019

Email: [rachelle@iaa.gov.il](mailto:rachelle@iaa.gov.il)

#### **Yossi Tzemach**

Head, Industrial & Management Dep.

Tel. +972-3-9752020

Email: [yossiz@iaa.gov.il](mailto:yossiz@iaa.gov.il)



Dear friends and partners,

I hereby respectfully submit for your review a report summarizing the aviation activity at Ben - Gurion International Airport in December 2021.

During the month, a total of 727,586 passengers on 8,436 international and domestic flights passed through Ben- Gurion Airport.

International passenger traffic in December totaled 660,325 passengers representing an increase of 219% compared to December 2020.

International aircraft traffic totaled 7,488 flights, representing an increase of 120.17% compared to December 2020.

International passenger traffic at Terminal 3 this month totaled 626,695 passengers. Passengers on International flights from Terminal 1, totaled 33,630.

On domestic flights 67,261 passengers passed through Ben- Gurion Airport this month, compared with 31,122 in December 2020, an increase of 116.12%.

Israeli airlines carried 203,460 passengers in this month, 30.81% of all travelers passing through Ben - Gurion Airport, an increase of 129.74% relative to the previous December.

The airlines which contributed the most to the increase of passenger traffic this month are: EL AL ISRAEL AIRLINES, RYANAIR and ISRAIR AIRLINES.

The Destination with the highest volume of activity was DUBAI with a total of 54,277 passengers to and from, a decrease of 18.18% compared to the previous December.

The country with the highest volume of activity was the UNITED STATES, with 87,553 passengers, constituting 13.25% of all activity.

The countries which contributed the most to the increase of passenger traffic this month are: UNITED STATES, ITALY and TURKEY.

Cargo transportation this month stood at 34,480 tons and reflects an increase of 7.62% compared to December 2020. 11,431 tons were transported in passenger aircraft and 23,049 tons in cargo aircraft.

Below you will find additional tables providing details about movements of aircraft, passengers and cargo at Ben - Gurion International Airport.

Sincerely yours,

**Shmuel Zakay**

Managing Director,

Ben-Gurion International Airport



# Content



## Aviation Activity

Aviation Activity Summary	1
International Activity Summary	2 - 4
Domestic Activity Summary	5



## International Activity

Distribution By Months	7 - 8
Distribution By Airlines	9 - 19
Distribution By Countries	20 - 27
Distribution By First Destination	28 - 45



## Cargo Activity

Distribution by Transporter	47
Distribution By Months	47
Distribution By Airlines	48 - 52
Distribution By Countries	53 - 55



## Domestic Activity

Distribution By Months	57 - 58
Distribution By Airlines	59
Distribution By Destinations	60





# Passengers and Aircrafts

## Aviation Activity at Ben Gurion International Airport

### International Activity

	Current Month			Accumulated Since the beginning of the year		
	December 2021	December 2020	Rate Of Change	2021	2020	Rate Of Change
Incoming Aircrafts	3,742	1,704	119.60%	33,465	24,625	35.89%
Outgoing Aircrafts	3,746	1,697	120.74%	33,473	24,598	36.08%
<b>Total Aircrafts</b>	<b>7,488</b>	<b>3,401</b>	<b>120.17%</b>	<b>66,938</b>	<b>49,223</b>	<b>35.98%</b>
Incoming Passengers	348,937	103,166		3,032,982	2,235,773	35.65%
Outgoing Passengers	311,388	103,445		3,055,125	2,221,666	37.51%
Transit Passengers	2	12	-83.33%	157	2,005	-92.16%
<b>Total Passengers</b>	<b>660,325</b>	<b>206,611</b>		<b>6,088,107</b>	<b>4,457,439</b>	<b>36.58%</b>

### Domestic Activity

	Current Month			Accumulated Since the beginning of the year		
	December 2021	December 2020	Rate Of Change	2021	2020	Rate Of Change
Aircrafts	948	584	62.32%	8,386	5,702	47.07%
Passengers	67,261	31,122	116.12%	631,769	352,354	79.29%

### International and Domestic Activity Summary

	Current Month			Accumulated Since the beginning of the year		
	December 2021	December 2020	Rate Of Change	2021	2020	Rate Of Change
Aircrafts	8,436	3,985	111.69%	75,324	54,925	37.13%
Passengers	727,586	237,733		6,719,876	4,809,793	39.71%





# Passengers and Aircrafts

## Int'l Aviation Activity at Ben Gurion International Airport by Terminal

### Terminal 3

	Current Month			Accumulated Since the beginning of the year		
	December 2021	December 2020	Rate of Change	2021	2020	Rate of Change
Incoming Aircrafts	3,333	1,704	95.59%	32,696	24,625	32.77%
Outgoing Aircrafts	3,746	1,314	185.08%	33,246	21,779	52.65%
<b>Total Aircrafts</b>	<b>7,079</b>	<b>3,018</b>	<b>134.55%</b>	<b>65,942</b>	<b>46,404</b>	<b>42.10%</b>
Incoming Passengers	315,307	103,166		2,967,187	2,235,773	32.71%
Outgoing Passengers	311,388	59,247		3,033,090	1,849,917	63.95%
Transit Passengers	2	12	<b>-83.33%</b>	157	2,005	<b>-92.16%</b>
<b>Total Passengers</b>	<b>626,695</b>	<b>162,413</b>		<b>6,000,277</b>	<b>4,085,690</b>	<b>46.86%</b>

### Terminal 1

	Current Month			Accumulated Since the beginning of the year		
	December 2021	December 2020	Rate of Change	2021	2020	Rate of Change
Incoming Aircrafts	409			769		
Outgoing Aircrafts		383	<b>-100.00%</b>	227	2,819	<b>-91.94%</b>
<b>Total Aircrafts</b>	<b>409</b>	<b>383</b>	<b>6.78%</b>	<b>996</b>	<b>2,819</b>	<b>-64.66%</b>
Incoming Passengers	33,630			65,795		
Outgoing Passengers		44,198	<b>-100.00%</b>	22,035	371,749	<b>-94.07%</b>
<b>Total Passengers</b>	<b>33,630</b>	<b>44,198</b>	<b>-23.91%</b>	<b>87,830</b>	<b>371,749</b>	<b>-76.37%</b>





# Passengers and Aircrafts

## Int'l Aviation Activity at Ben Gurion International Airport by Flight Type

### Schedule and Charter Flights

	Current Month			Accumulated Since the beginning of the year		
	December 2021	December 2020	Rate of Change	2021	2020	Rate of Change
Incoming Aircrafts	3,073	1,015		24,469	17,389	40.71%
Outgoing Aircrafts	3,075	1,031	198.25%	24,610	17,578	40.00%
<b>Total Aircrafts</b>	<b>6,148</b>	<b>2,046</b>		<b>49,079</b>	<b>34,967</b>	<b>40.35%</b>
Incoming Passengers	348,298	101,945		3,019,058	2,225,109	35.68%
Outgoing Passengers	310,760	102,404		3,041,753	2,211,046	37.57%
Transit Passengers	2	12	-83.33%	154	1,996	-92.28%
<b>Total Passengers</b>	<b>659,058</b>	<b>204,349</b>		<b>6,060,811</b>	<b>4,436,155</b>	<b>36.62%</b>

### Private Flights

	Current Month			Accumulated Since the beginning of the year		
	December 2021	December 2020	Rate of Change	2021	2020	Rate of Change
Incoming Aircrafts	221	265	-16.60%	3,949	2,709	45.77%
Outgoing Aircrafts	225	252	-10.71%	3,917	2,689	45.66%
<b>Total Aircrafts</b>	<b>446</b>	<b>517</b>	<b>-13.73%</b>	<b>7,866</b>	<b>5,398</b>	<b>45.72%</b>
Incoming Passengers	552	761	-27.46%	11,673	8,117	43.80%
Outgoing Passengers	540	670	-19.40%	11,392	8,386	35.84%
<b>Total Passengers</b>	<b>1,092</b>	<b>1,431</b>	<b>-23.68%</b>	<b>23,065</b>	<b>16,503</b>	<b>39.76%</b>





# Passengers and Aircrafts

## Int'l Aviation Activity at Ben Gurion International Airport by Flight Type

### Cargo Flights

	Current Month			Accumulated Since the beginning of the year		
	December 2021	December 2020	Rate of Change	2021	2020	Rate of Change
Incoming Aircrafts	440	402	9.45%	4,773	4,313	10.66%
Outgoing Aircrafts	427	390	9.48%	4,668	4,109	13.60%
<b>Total Aircrafts</b>	<b>867</b>	<b>792</b>	<b>9.46%</b>	<b>9,441</b>	<b>8,422</b>	<b>12.09%</b>
Incoming Passengers	32	13	146.15%	222	273	-18.68%
Outgoing Passengers	31	18	72.22%	312	402	-22.38%
<b>Total Passengers</b>	<b>63</b>	<b>31</b>	<b>103.22%</b>	<b>534</b>	<b>675</b>	<b>-20.88%</b>

### Other Flights

	Current Month			Accumulated Since the beginning of the year		
	December 2021	December 2020	Rate of Change	2021	2020	Rate of Change
Incoming Aircrafts	8	22	-63.63%	274	214	28.03%
Outgoing Aircrafts	19	24	-20.83%	278	222	25.22%
<b>Total Aircrafts</b>	<b>27</b>	<b>46</b>	<b>-41.30%</b>	<b>552</b>	<b>436</b>	<b>26.60%</b>
Incoming Passengers	55	447	-87.69%	2,029	2,274	-10.77%
Outgoing Passengers	57	353	-83.85%	1,668	1,832	-8.95%
<b>Total Passengers</b>	<b>112</b>	<b>800</b>	<b>-86.00%</b>	<b>3,697</b>	<b>4,106</b>	<b>-9.96%</b>







# Passengers and Aircrafts

## Domestic Aviation Activity at Ben Gurion International Airport by Flight Type

### Schedule Flights

	Current Month			Accumulated Since the beginning of the year		
	December 2021	December 2020	Rate of Change	2021	2020	Rate of Change
Aircrafts	830	441	88.20%	7,183	4,284	67.67%
Passengers	66,968	31,090	115.40%	630,020	351,587	79.19%

### Private Flights

	Current Month			Accumulated Since the beginning of the year		
	December 2021	December 2020	Rate of Change	2021	2020	Rate of Change
Aircrafts	40	88	-54.54%	621	659	-5.76%
Passengers	61	32	90.62%	575	515	11.65%

### Other Flights

	Current Month			Accumulated Since the beginning of the year		
	December 2021	December 2020	Rate of Change	2021	2020	Rate of Change
Aircrafts	78	55	41.81%	582	759	-23.32%
Passengers	232			1,174	252	





# International Activity

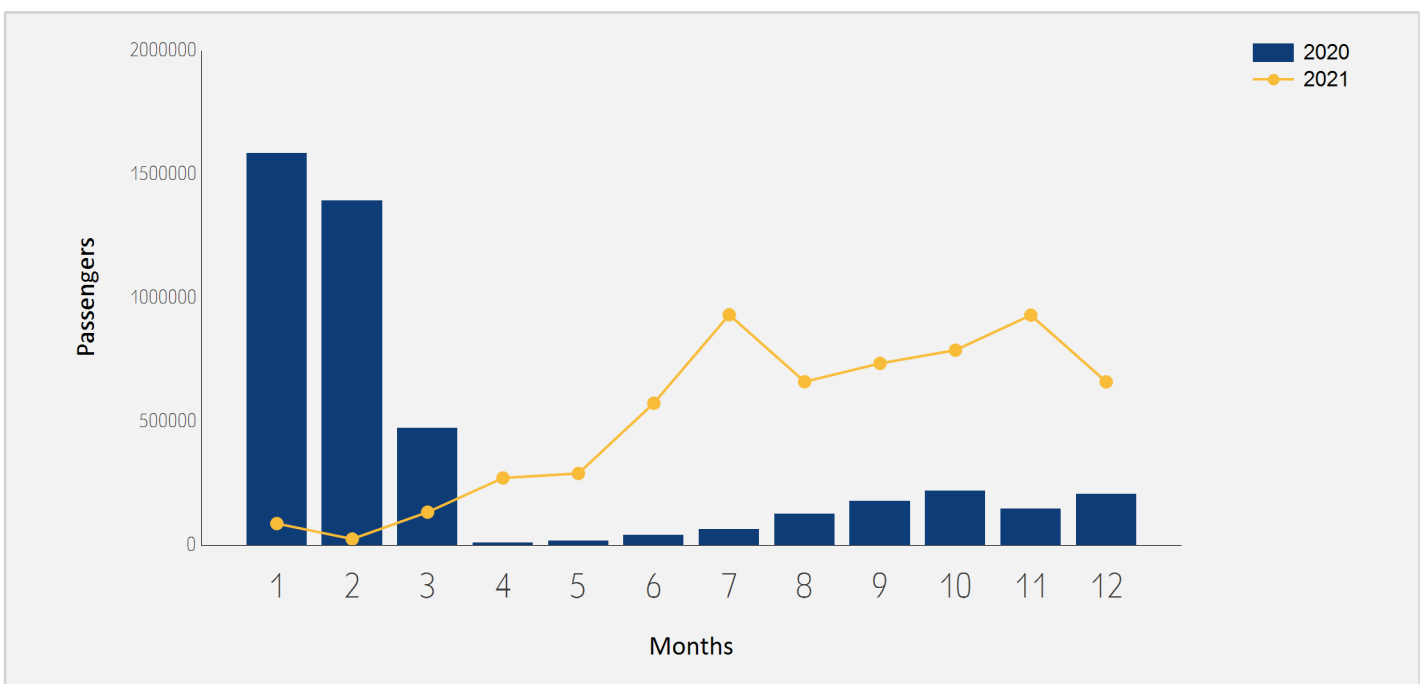




# International Passenger Traffic

## Distribution by Months

Months	2021	2020	Rate of Change
January	87,196	1,584,027	-94.49%
February	24,755	1,391,803	-98.22%
March	133,322	471,904	-71.74%
April	271,707	9,377	
May	290,037	18,225	
June	574,093	40,970	
July	931,834	64,001	
August	660,867	126,353	
September	735,213	176,877	
October	788,593	220,125	
November	930,165	147,166	
December	660,325	206,611	
<b>Total</b>	<b>6,088,107</b>	<b>4,457,439</b>	<b>36.58%</b>

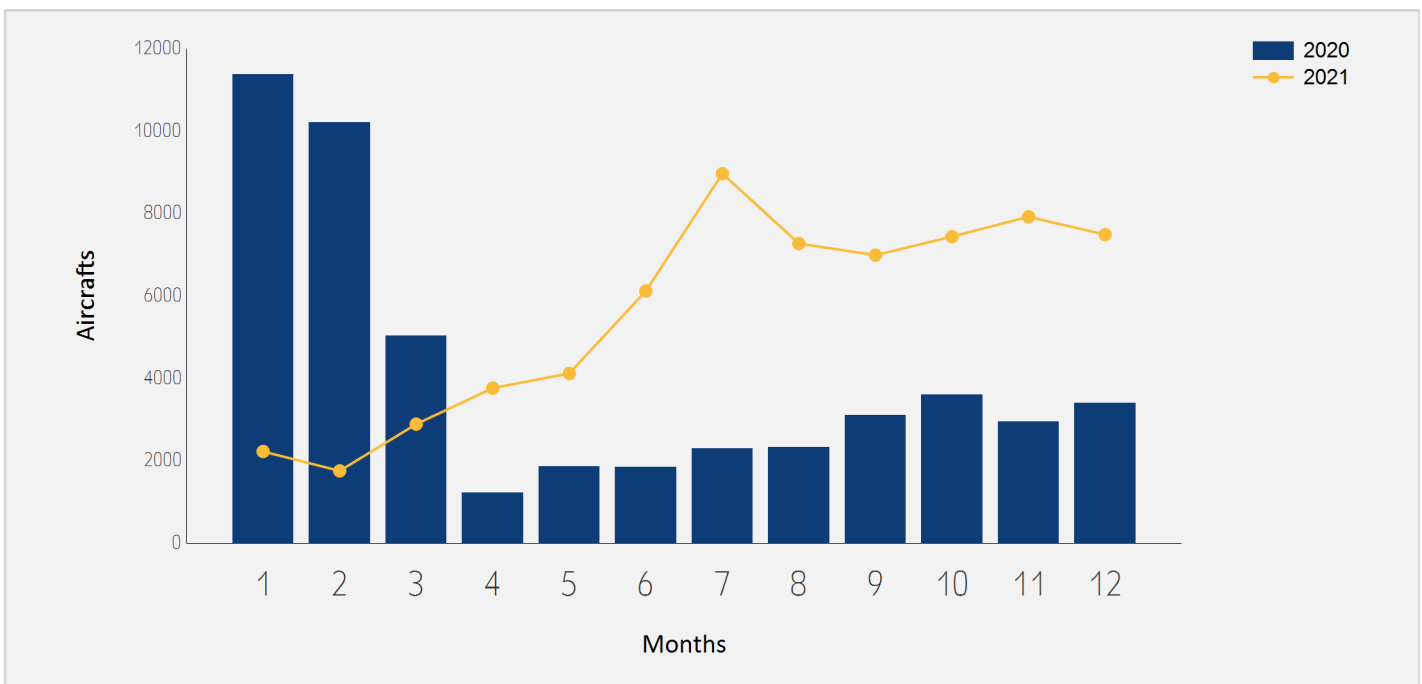




# International Aircraft Traffic

## Distribution by Months

Months	2021	2020	Rate of Change
January	2,225	11,374	-80.43%
February	1,753	10,207	-82.82%
March	2,888	5,038	-42.67%
April	3,761	1,225	
May	4,119	1,863	121.09%
June	6,120	1,849	
July	8,967	2,291	
August	7,269	2,328	
September	6,989	3,104	125.16%
October	7,439	3,595	106.92%
November	7,920	2,948	168.65%
December	7,488	3,401	120.17%
<b>Total</b>	<b>66,938</b>	<b>49,223</b>	<b>35.98%</b>





# International Passenger Traffic

## Distribution by Airline for December

		December 2021		December 2020		
Airline		Passengers	Rate of Total	Passengers	Rate of Total	Rate of Change
LY	EL AL ISRAEL AIRLINES	136,642	20.69%	44,004	21.29%	
FR	RYANAIR	77,812	11.78%	1,336	0.64%	
6H	ISRAIR AIRLINES	53,504	8.10%	22,420	10.85%	138.64%
TK	TURKISH AIRLINES	40,543	6.13%	14,732	7.13%	175.20%
PC	PEGASUS AIRLINES	32,910	4.98%	12,053	5.83%	173.04%
EZY	EASYJET	30,928	4.68%	2,228	1.07%	
UA	UNITED AIRLINES	30,845	4.67%	15,965	7.72%	93.20%
W6	WIZZAIR	27,200	4.11%	1,203	0.58%	
FZ	FLYDUBAI	18,163	2.75%	18,397	8.90%	-1.27%
LH	LUFTHANSA	16,782	2.54%	5,292	2.56%	
PS	UKRAINE INTL AIR	16,692	2.52%	8,028	3.88%	107.92%
AA	AMERICAN AIRLINES	14,034	2.12%			
IZ	ARKIA ISRAELI AIRLINES	12,998	1.96%	21,727	10.51%	-40.17%
DL	DELTA AIRLINES	10,955	1.65%	5,364	2.59%	104.23%
TO	TRANSAVIA FRANCE	10,406	1.57%	1,762	0.85%	
SU	AEROFLOT RUSSIAN AIRLINES	8,555	1.29%	2,763	1.33%	
AF	AIR FRANCE	7,100	1.07%	3,233	1.56%	119.61%
QS	SMARTWINGS	6,877	1.04%			
A3	AEGEAN AIRLINES	6,832	1.03%	869	0.42%	
LX	SWISS INT'L AIRLINES	6,544	0.99%	1,302	0.63%	
BZ	BLUE BIRD AIRWAYS	6,161	0.93%			





# International Passenger Traffic

## Distribution by Airline for December

		December 2021		December 2020		
Airline		Passengers	Rate of Total	Passengers	Rate of Total	Rate of Change
IB	IBERIA	5,541	0.83%			
LO	LOT POLISH AIRLINES	5,065	0.76%			
AC	AIR CANADA	4,922	0.74%	1,282	0.62%	
KL	K.L.M.	4,578	0.69%	387	0.18%	
OS	AUSTRIAN AIRLINES	4,411	0.66%	1,412	0.68%	
BA	BRITISH AIRWAYS PLC	4,334	0.65%	1,904	0.92%	127.62%
UX	AIR EUROPA Lineas Aereas	4,296	0.65%	454	0.21%	
A9	GEORGIAN AIRWAYS	3,917	0.59%			
EY	ETIHAD AIRWAYS	3,344	0.50%			
U8	TUS AIRWAYS	2,880	0.43%			
AZ	ITALYA TRASPORTO AEREO	2,763	0.41%			
XC	CORONDON AIRLINES	2,484	0.37%	86	0.04%	
TWI	TAILWIND AIRLINES	2,463	0.37%			
VS	VIRGIN ATLANTIC AIRWAYS	2,388	0.36%	2,053	0.99%	16.31%
ET	ETHIOPIAN AIRLINES	2,381	0.36%	4,238	2.05%	-43.81%
B2	BELAVIA AIRLINE	2,259	0.34%	872	0.42%	159.05%
TP	AIR PORTUGAL	2,195	0.33%			
9U	AIR MOLDOVA	2,126	0.32%	1,933	0.93%	9.98%
RJ	ROYAL JORDANIAN	2,025	0.30%			
PQ	SKYUP AIRLINES	1,970	0.29%			
RO	TAROM - RUMANIAN AIR TRAN	1,818	0.27%	385	0.18%	





# International Passenger Traffic

## Distribution by Airline for December

		December 2021		December 2020		
Airline		Passengers	Rate of Total	Passengers	Rate of Total	Rate of Change
AI	AIR INDIA	1,790	0.27%	591	0.28%	
HV	TRANSAVIA	1,658	0.25%			
HY	UZBEKISTAN AIR	1,487	0.22%			
GF	GULF AIR - BAHREIN	1,363	0.20%	37	0.01%	
J2	AZERBAIJAN AIRLINES	1,330	0.20%			
VY	VUELING AIRLINES S.A.	1,262	0.19%			
5F	FLYONE	1,065	0.16%			
CX	CATHAY PACIFIC AIRWAYS	1,047	0.15%	434	0.21%	141.24%
SN	BRUSSELS AIRLINES	1,023	0.15%			
MS	EGYPTAIR AIRLINES	983	0.14%			
FH	FREEBIRD AIRLINES	952	0.14%			
FB	BULGARIA AIR	933	0.14%			
FV	ROSSIYA AIRLINES	722	0.10%			
BT	AIR BALTIC	653	0.09%			
N4	NORD WIND	602	0.09%			
HM	AIR SEYCHELLES	576	0.08%	5,255	2.54%	-89.03%
5W	WIZZ AIR ABU DHABI	460	0.06%			
EAF	ELECTRA AIRWAYS	289	0.04%			
BUC	EUROPEAN AIR CHARTER	164	0.02%			
	OTHERS	1,323	0.20%	2,610	1.26%	-49.31%
	<b>TOTAL</b>	<b>660,325</b>		<b>206,611</b>		





# Int'l Accumulated Passenger Traffic

## Distribution by Airline

		Accumulated 2021		Accumulated 2020		
Airline		Passengers	Rate of Total	Passengers	Rate of Total	Rate of Change
LY	EL AL ISRAEL AIRLINES	1,401,014	23.01%	906,619	20.33%	54.53%
FR	RYANAIR	512,396	8.41%	233,878	5.24%	119.08%
6H	ISRAIR AIRLINES	363,653	5.97%	190,898	4.28%	90.49%
TK	TURKISH AIRLINES	358,636	5.89%	311,094	6.97%	15.28%
UA	UNITED AIRLINES	345,422	5.67%	266,553	5.97%	29.58%
W6	WIZZAIR	267,310	4.39%	244,445	5.48%	9.35%
PC	PEGASUS AIRLINES	222,636	3.65%	164,045	3.68%	35.71%
IZ	ARKIA ISRAELI AIRLINES	219,745	3.60%	66,186	1.48%	
EZY	EASYJET	211,763	3.47%	258,920	5.80%	-18.21%
LH	LUFTHANSA	182,381	2.99%	139,604	3.13%	30.64%
PS	UKRAINE INTL AIR	172,979	2.84%	115,420	2.58%	49.86%
DL	DELTA AIRLINES	151,537	2.48%	77,362	1.73%	95.88%
FZ	FLYDUBAI	116,271	1.90%	21,600	0.48%	
A3	AEGEAN AIRLINES	109,841	1.80%	81,838	1.83%	34.21%
AA	AMERICAN AIRLINES	106,257	1.74%			
BZ	BLUE BIRD AIRWAYS	95,356	1.56%	28,884	0.64%	
AF	AIR FRANCE	83,575	1.37%	88,117	1.97%	-5.15%
LX	SWISS INT'L AIRLINES	81,041	1.33%	57,870	1.29%	40.03%
OS	AUSTRIAN AIRLINES	73,359	1.20%	51,122	1.14%	43.49%
BA	BRITISH AIRWAYS PLC	64,273	1.05%	76,441	1.71%	-15.91%
TO	TRANSAVIA FRANCE	62,926	1.03%	71,995	1.61%	-12.59%







# Int'l Accumulated Passenger Traffic

## Distribution by Airline

		Accumulated 2021		Accumulated 2020		
Airline		Passengers	Rate of Total	Passengers	Rate of Total	Rate of Change
KL	K.L.M.	58,915	0.96%	26,703	0.59%	120.63%
SU	AEROFLOT RUSSIAN AIRLINES	58,878	0.96%	125,098	2.80%	-52.93%
QS	SMARTWINGS	54,222	0.89%	18,197	0.40%	197.97%
AC	AIR CANADA	53,759	0.88%	41,539	0.93%	29.41%
VS	VIRGIN ATLANTIC AIRWAYS	49,073	0.80%	31,118	0.69%	57.69%
ET	ETHIOPIAN AIRLINES	45,404	0.74%	42,130	0.94%	7.77%
LO	LOT POLISH AIRLINES	40,299	0.66%	46,302	1.03%	-12.96%
IB	IBERIA	38,513	0.63%	30,252	0.67%	27.30%
A9	GEORGIAN AIRWAYS	35,680	0.58%	23,240	0.52%	53.52%
B2	BELAVIA AIRLINE	27,412	0.45%	26,035	0.58%	5.28%
9U	AIR MOLDOVA	26,686	0.43%	16,256	0.36%	64.16%
UX	AIR EUROPA Lineas Aereas	25,038	0.41%	454	0.01%	
TWI	TAILWIND AIRLINES	23,452	0.38%	12,312	0.27%	90.48%
RO	TAROM - RUMANIAN AIR TRAN	23,202	0.38%	19,023	0.42%	21.96%
AZ	ITALYA TRASPORTO AEREO	21,829	0.35%	55,578	1.24%	-60.72%
U8	TUS AIRWAYS	21,593	0.35%			
SN	BRUSSELS AIRLINES	19,595	0.32%	22,958	0.51%	-14.64%
XC	CORONDON AIRLINES	19,506	0.32%	7,220	0.16%	170.16%
FH	FREEBIRD AIRLINES	17,310	0.28%	7,401	0.16%	133.88%
HV	TRANSAVIA	15,997	0.26%	32,925	0.73%	-51.41%
FB	BULGARIA AIR	15,686	0.25%	18,800	0.42%	-16.56%





# Int'l Accumulated Passenger Traffic

## Distribution by Airline

		Accumulated 2021		Accumulated 2020		
Airline		Passengers	Rate of Total	Passengers	Rate of Total	Rate of Change
BUC	EUROPEAN AIR CHARTER	12,540	0.20%	1,617	0.03%	
EY	ETIHAD AIRWAYS	12,165	0.19%	472	0.01%	
HM	AIR SEYCHELLES	11,688	0.19%	9,889	0.22%	18.19%
AI	AIR INDIA	10,076	0.16%	22,513	0.50%	-55.24%
5F	FLYONE	9,837	0.16%	112		
TP	AIR PORTUGAL	9,532	0.15%	12,544	0.28%	-24.01%
J2	AZERBAIJAN AIRLINES	9,152	0.15%	3,605	0.08%	153.86%
HY	UZBEKISTAN AIR	8,749	0.14%	6,593	0.14%	32.70%
MJ	MYWAY AIRLINES	7,697	0.12%	7,166	0.16%	7.40%
BT	AIR BALTIC	7,314	0.12%	1,681	0.03%	
EAF	ELECTRA AIRWAYS	7,295	0.11%	767	0.01%	
N4	NORD WIND	5,102	0.08%			
PQ	SKYUP AIRLINES	4,922	0.08%	10,427	0.23%	-52.79%
DY	NORWEGIAN AIR SHUTTLE ASA	4,644	0.07%	5,905	0.13%	-21.35%
CX	CATHAY PACIFIC AIRWAYS	4,541	0.07%	19,549	0.43%	-76.77%
AY	FINNAIR	4,153	0.06%	4,176	0.09%	-0.55%
GF	GULF AIR - BAHREIN	4,003	0.06%	96		
OB	BLUE AIR AVIATION	3,606	0.05%	11,669	0.26%	-69.09%
VY	VUELING AIRLINES S.A.	3,560	0.05%	14,964	0.33%	-76.20%
RJ	ROYAL JORDANIAN	3,473	0.05%	27,392	0.61%	-87.32%
7W	WIND ROSE AVIATION Co. Lt	3,201	0.05%	114		





# Int'l Accumulated Passenger Traffic

## Distribution by Airline

		Accumulated 2021		Accumulated 2020		
Airline		Passengers	Rate of Total	Passengers	Rate of Total	Rate of Change
CY	CYPRUS AIRWAYS	2,790	0.04%	9,192	0.20%	-69.64%
MS	EGYPTAIR AIRLINES	2,302	0.03%			
NO	NEOS	2,295	0.03%			
ENT	ENTER AIR	2,130	0.03%	2,212	0.04%	-3.70%
ZT	TITAN AIRWAYS Ltd.	1,923	0.03%	29		
5W	WIZZ AIR ABU DHABI	1,501	0.02%			
7B	BEES AIRLINE	1,087	0.01%			
FV	ROSSIYA AIRLINES	1,081	0.01%	13,968	0.31%	-92.26%
PLM	WAMOS AIR	675	0.01%			
VN	VIETNAM AIRLINES	544		907	0.02%	-40.02%
JAV	JORDANIAN AVIATION	496		2,636	0.05%	-81.18%
HU	HAINAN AIRLINES	440		7,966	0.17%	-94.47%
D8	NORWEGIAN AIR SHUTTLE	339		15,916	0.35%	-97.87%
ASY	ROYAL AUSTRALIAN AIR FORCE	293				
KLJ	KLASJET	264		106		149.05%
PVG	PRIVILEG STYLE	245		511	0.01%	-52.05%
TB	JET AIRFLY	200				
KM	AIR MALTA	194		4,609	0.10%	-95.79%
B0	DREAMJET	128				
UL	SRILANKA AIRLINES	119		168		-29.16%
UVT	UVT AERO	115				





# Int'l Accumulated Passenger Traffic

## Distribution by Airline

		Accumulated 2021		Accumulated 2020		
Airline		Passengers	Rate of Total	Passengers	Rate of Total	Rate of Change
X5	AIR EUROPA EXPRESS	109				
EW	EUROWINGS	106				
	OTHERS	27,061	0.44%	181,536	4.07%	-85.09%
	<b>TOTAL</b>	<b>6,088,107</b>		<b>4,457,439</b>		<b>36.58%</b>





# International Passenger Traffic

## Distribution by Israeli Airlines for December

		December 2021		December 2020		
Airlines		Passengers	Rate of Total	Passengers	Rate of Total	Rate of Change
LY	EL AL ISRAEL AIRLINES	136,642	20.69%	44,004	21.29%	
6H	ISRAIR AIRLINES	53,504	8.10%	22,420	10.85%	138.64%
IZ	ARKIA ISRAELI AIRLINES	12,998	1.96%	21,727	10.51%	-40.17%
	OTHERS	316	0.04%	407	0.19%	-22.35%
	<b>TOTAL</b>	<b>203,460</b>	<b>30.81%</b>	<b>88,558</b>	<b>42.86%</b>	<b>129.74%</b>

# Int'l Accumulated Passenger Traffic

## Distribution by Israeli Airlines

		Accumulated 2021		Accumulated 2020		
Airlines		Passengers	Rate of Total	Passengers	Rate of Total	Rate of Change
LY	EL AL ISRAEL AIRLINES	1,401,014	23.01%	906,619	20.33%	54.53%
6H	ISRAIR AIRLINES	363,653	5.97%	190,898	4.28%	90.49%
IZ	ARKIA ISRAELI AIRLINES	219,745	3.60%	66,186	1.48%	
	OTHERS	5,709	0.09%	3,500	0.07%	63.11%
	<b>TOTAL</b>	<b>1,990,121</b>	<b>32.68%</b>	<b>1,167,203</b>	<b>26.18%</b>	<b>70.50%</b>





# International Passenger Traffic

## Distribution by Countries for December

Countries	December 2021		December 2020		
	Passengers	Rate of Total	Passengers	Total of Rate	Rate of Change
UNITED STATES	87,553	13.25%	28,695	13.88%	
TURKEY	79,388	12.02%	26,887	13.01%	195.26%
UNITED ARAB EMIRATES	58,355	8.83%	66,760	32.31%	-12.58%
ITALY	48,134	7.28%	399	0.19%	
FRANCE	41,600	6.29%	11,272	5.45%	
GERMANY	32,489	4.92%	6,494	3.14%	
UKRAINE	30,485	4.61%	14,448	6.99%	110.99%
HUNGARY	27,159	4.11%	506	0.24%	
UNITED KINGDOM	25,229	3.82%	8,883	4.29%	184.01%
GEORGIA	21,698	3.28%	214	0.10%	
GREECE	20,341	3.08%	969	0.46%	
SPAIN	19,527	2.95%	591	0.28%	
CZECH REPUBLIC	19,237	2.91%	136	0.06%	
POLAND	15,442	2.33%	6		
CYPRUS	15,256	2.31%	360	0.17%	
RUSSIAN FEDERATION	13,913	2.10%	4,107	1.98%	
ROMANIA	13,414	2.03%	608	0.29%	
NETHERLANDS	12,033	1.82%	1,445	0.69%	
AUSTRIA	10,940	1.65%	1,710	0.82%	
SWITZERLAND	10,277	1.55%	1,723	0.83%	
BULGARIA	9,285	1.40%	594	0.28%	
THAILAND	8,631	1.30%	1,148	0.55%	





# International Passenger Traffic

## Distribution by Countries for December

Countries	December 2021		December 2020		
	Passengers	Rate of Total	Passengers	Total of Rate	Rate of Change
CANADA	6,019	0.91%	1,282	0.62%	
BELGIUM	4,573	0.69%	509	0.24%	
PORTUGAL	4,309	0.65%	9		
MOLDOVA	3,191	0.48%	1,933	0.93%	65.08%
LITHUANIA	2,479	0.37%			
ETHIOPIA	2,391	0.36%	4,291	2.07%	-44.27%
BELARUS	2,291	0.34%	874	0.42%	162.12%
JORDAN	2,135	0.32%	34	0.01%	
INDIA	1,790	0.27%	831	0.40%	115.40%
MALTA	1,616	0.24%	30	0.01%	
UZBEKISTAN	1,492	0.22%			
CHINA	1,459	0.22%	1,032	0.49%	41.37%
BAHRAIN	1,379	0.20%	64	0.03%	
AZERBAIJAN	1,352	0.20%	17		
MOROCCO	1,092	0.16%	122	0.05%	
EGYPT	1,068	0.16%	76	0.03%	
LATVIA	653	0.09%			
SEYCHELLES	270	0.04%	15,518	7.51%	-98.26%
MALDIVES	168	0.02%			
ARMENIA	113	0.01%			
OTHERS	99	0.01%	2,034	0.98%	-95.13%
<b>TOTAL</b>	<b>660,325</b>		<b>206,611</b>		





# Int'l Accumulated Passenger Traffic

## Distribution by Countries

Countries	Accumulated 2021		Accumulated 2020		
	Passengers	Rate of Total	Passengers	Rate of Total	Rate of Change
UNITED STATES	985,722	16.19%	530,005	11.89%	85.98%
TURKEY	643,062	10.56%	514,366	11.53%	25.02%
GREECE	514,194	8.44%	192,961	4.32%	166.47%
FRANCE	388,289	6.37%	308,458	6.92%	25.88%
GERMANY	321,315	5.27%	289,825	6.50%	10.86%
UKRAINE	281,595	4.62%	162,853	3.65%	72.91%
UNITED KINGDOM	272,755	4.48%	284,426	6.38%	-4.10%
UNITED ARAB EMIRATES	268,511	4.41%	72,025	1.61%	
ITALY	250,912	4.12%	183,310	4.11%	36.87%
GEORGIA	222,828	3.66%	61,522	1.38%	
AUSTRIA	194,282	3.19%	119,445	2.67%	62.65%
CYPRUS	193,910	3.18%	79,488	1.78%	143.94%
HUNGARY	166,529	2.73%	99,843	2.23%	66.79%
SWITZERLAND	131,240	2.15%	120,154	2.69%	9.22%
CZECH REPUBLIC	127,164	2.08%	47,250	1.06%	169.13%
NETHERLANDS	126,404	2.07%	108,172	2.42%	16.85%
ROMANIA	126,088	2.07%	120,238	2.69%	4.86%
SPAIN	113,760	1.86%	153,138	3.43%	-25.71%
RUSSIAN FEDERATION	107,147	1.75%	206,870	4.64%	-48.20%
BULGARIA	102,882	1.68%	112,256	2.51%	-8.35%
POLAND	92,723	1.52%	130,408	2.92%	-28.89%
CANADA	60,467	0.99%	55,020	1.23%	9.90%







# Int'l Accumulated Passenger Traffic

## Distribution by Countries

Countries	Accumulated 2021		Accumulated 2020		
	Passengers	Rate of Total	Passengers	Rate of Total	Rate of Change
ETHIOPIA	45,686	0.75%	42,561	0.95%	7.34%
BELGIUM	44,800	0.73%	47,108	1.05%	-4.89%
MOLDOVA	37,885	0.62%	17,955	0.40%	110.99%
THAILAND	30,931	0.50%	44,345	0.99%	-30.24%
BELARUS	27,687	0.45%	26,225	0.58%	5.57%
MONTENEGRO	25,921	0.42%	99		
PORTUGAL	22,721	0.37%	19,659	0.44%	15.57%
SEYCHELLES	19,951	0.32%	23,686	0.53%	-15.76%
MOROCCO	15,018	0.24%	124		
LITHUANIA	13,333	0.21%	15,051	0.33%	-11.41%
AZERBAIJAN	12,418	0.20%	9,050	0.20%	37.21%
INDIA	11,482	0.18%	42,494	0.95%	-72.97%
CHINA	11,375	0.18%	43,942	0.98%	-74.11%
SERBIA	10,291	0.16%	27,785	0.62%	-62.96%
UZBEKISTAN	9,281	0.15%	7,177	0.16%	29.31%
LATVIA	7,334	0.12%	1,828	0.04%	
JORDAN	5,505	0.09%	31,409	0.70%	-82.47%
TANZANIA	5,060	0.08%	3,606	0.08%	40.32%
DENMARK	4,762	0.07%	7,314	0.16%	-34.89%
BAHRAIN	4,446	0.07%	346		
FINLAND	4,300	0.07%	11,346	0.25%	-62.10%
MALTA	3,936	0.06%	4,787	0.10%	-17.77%





# Int'l Accumulated Passenger Traffic

## Distribution by Countries

Countries	Accumulated 2021		Accumulated 2020		
	Passengers	Rate of Total	Passengers	Rate of Total	Rate of Change
EGYPT	3,784	0.06%	10,843	0.24%	-65.10%
ICELAND	3,325	0.05%	33		
SLOVAKIA	3,101	0.05%	774	0.01%	
ALBANIA	2,985	0.04%	184		
SLOVENIA	2,334	0.03%	43		
SWEDEN	704	0.01%	5,922	0.13%	-88.11%
CROATIA	647	0.01%	6,503	0.14%	-90.05%
KAZAKHSTAN	592		371		59.56%
MEXICO	572		273		109.52%
VIETNAM	544		567	0.01%	-4.05%
MALDIVES	427				
RWANDA	423		3,811	0.08%	-88.90%
IRELAND	267		409		-34.71%
CAMBODIA	243		416		-41.58%
EQUATORIAL GUINEA	235				
PANAMA	200		177		12.99%
GHANA	197		45		
FAROEISLANDS	184				
ARMENIA	166		1,393	0.03%	-88.08%
BRAZIL	134		15,433	0.34%	-99.13%
ESTONIA	123		1		
SOUTH AFRICA	110		12,876	0.28%	-99.14%





# Int'l Accumulated Passenger Traffic

## Distribution by Countries

Countries	Accumulated 2021		Accumulated 2020		
	Passengers	Rate of Total	Passengers	Rate of Total	Rate of Change
GIBRALTAR	107		68		57.35%
OTHERS	801	0.01%	17,367	0.38%	-95.38%
<b>TOTAL</b>	<b>6,088,107</b>		<b>4,457,439</b>		<b>36.58%</b>





# International Passenger Traffic

## Distribution by First Destination for December

Destination	December 2021		December 2020		
	Passengers	Rate of Total	Passengers	Rate of Total	Rate of Change
DUBAI	54,277	8.21%	66,344	32.11%	-18.18%
ISTANBUL-SABIHA GOKCHEN	42,796	6.48%	13,337	6.45%	
NEW YORK - J.F.KENNEDY	34,163	5.17%	9,403	4.55%	
ISTANBUL	28,931	4.38%	11,986	5.80%	141.37%
NEW YORK - NEWARK	28,758	4.35%	12,479	6.03%	130.45%
KIEV KYIV-BORISPOL	27,075	4.10%	12,890	6.23%	110.04%
BUDAPEST	27,040	4.09%	506	0.24%	
PARIS-CHARLES DE GAULLE	24,877	3.76%	9,391	4.54%	164.90%
ROME - FIUMICINO	22,483	3.40%	342	0.16%	
PRAGUE-RUZYNE	19,237	2.91%	121	0.05%	
ATHENS	17,964	2.72%	963	0.46%	
LONDON - HEATHROW	15,800	2.39%	6,858	3.31%	130.38%
BERLIN BRANDENBURG INTL	13,732	2.07%	889	0.43%	
MADRID	12,439	1.88%	456	0.22%	
BUCHAREST - OTOPENI	12,288	1.86%	606	0.29%	
AMSTERDAM	12,031	1.82%	1,445	0.69%	
BATUMI	11,887	1.80%			
FRANKFURT	11,788	1.78%	5,584	2.70%	111.10%
VIENNA	10,922	1.65%	1,710	0.82%	
MILAN-MALPENSA	10,833	1.64%	16		
MIAMI INTERNATIONAL	10,068	1.52%	1,346	0.65%	
TBILISI	9,811	1.48%	214	0.10%	





# International Passenger Traffic

## Distribution by First Destination for December

Destination	December 2021		December 2020		
	Passengers	Rate of Total	Passengers	Rate of Total	Rate of Change
PAPHOS	9,205	1.39%	41	0.01%	
PARIS-ORLY	9,066	1.37%	1,595	0.77%	
MOSCOW	8,555	1.29%	2,763	1.33%	
SOFIA	7,801	1.18%	584	0.28%	
ANTALYA	7,642	1.15%	1,436	0.69%	
WARSAW	7,411	1.12%	6		
BARCELONA	7,088	1.07%	27	0.01%	
LUTON	6,754	1.02%	2,014	0.97%	
ZURICH	6,550	0.99%	1,694	0.81%	
LARNACA	6,051	0.91%	319	0.15%	
TORONTO	6,015	0.91%	1,282	0.62%	
SAN FRANCISCO	5,826	0.88%	2,353	1.13%	147.59%
LOS ANGELES	5,718	0.86%	941	0.45%	
BERGAMO	5,655	0.85%			
MUNICH	5,415	0.82%			
KRAKOW	4,590	0.69%			
BANGKOK INTL.-SUARNABHUM	4,510	0.68%	1,148	0.55%	
LISBON	4,296	0.65%	5		
PHUKET	4,121	0.62%			
NAPLES-CAPODICHINO	4,052	0.61%			
ABU DHABI	3,962	0.60%	18		
MOSCOW-DOMODEDOVO	3,905	0.59%	1,266	0.61%	





# International Passenger Traffic

## Distribution by First Destination for December

Destination	December 2021		December 2020		
	Passengers	Rate of Total	Passengers	Rate of Total	Rate of Change
LYON - SATOLAS	3,296	0.49%	194	0.09%	
CHISINAU	3,191	0.48%	1,933	0.93%	65.08%
CHICAGO - O'HARE	2,979	0.45%	1,580	0.76%	88.54%
GENEVA	2,554	0.38%	11		
BRUSSELS - CHARLEROI	2,532	0.38%			
VILNIUS INTL	2,479	0.37%			
ADDIS ABABA	2,391	0.36%	4,291	2.07%	-44.27%
THESSALONIKI	2,337	0.35%			
MINSK	2,291	0.34%	874	0.42%	162.12%
ODESA	2,179	0.32%	1,040	0.50%	109.51%
AMMAN (QUEEN ALIA INT'L)	2,106	0.31%	24	0.01%	
WARSAW- MODLIN	2,015	0.30%			
BRUSSELS	2,005	0.30%	498	0.24%	
GRENOBLE-SAUNT GEOIRS	1,912	0.28%			
DELHI	1,790	0.27%	801	0.38%	123.47%
MALTA	1,616	0.24%	30	0.01%	
BADEN BADEN	1,530	0.23%			
TASHKENT	1,492	0.22%			
VARNA	1,484	0.22%			
POZNAN	1,426	0.21%			
BOLOGNA-BORGO PANIGALE	1,411	0.21%			
ST. PETERSBURG	1,392	0.21%	30	0.01%	





# International Passenger Traffic

## Distribution by First Destination for December

Destination	December 2021		December 2020		
	Passengers	Rate of Total	Passengers	Rate of Total	Rate of Change
MANCHESTER	1,380	0.20%			
BAHRAIN	1,379	0.20%	64	0.03%	
BAKU HEYDAR ALIYEV INT`L	1,352	0.20%	17		
MARSEILLE	1,343	0.20%			
TREVISO	1,279	0.19%			
TURIN	1,276	0.19%			
LONDON - GATWICK	1,262	0.19%	2		
BASEL	1,154	0.17%			
NICE	1,077	0.16%	73	0.03%	
BARI -PALESE MACCHIE	1,077	0.16%			
HONG KONG INT'L	1,057	0.16%	570	0.27%	85.43%
CAIRO INTERNATIONAL	1,043	0.15%	10		
MARRAKESH	768	0.11%			
RIGA	653	0.09%			
KHARKOV	622	0.09%			
DNEPROPETROVSK	605	0.09%	512	0.24%	18.16%
CLUJ NAPOCA	574	0.08%			
IASI	552	0.08%			
SHANGHAI PUDONG	402	0.06%	453	0.21%	-11.25%
CASABLANCA-MOHAMMED V	324	0.04%			
MAHE SEYCHELLES INTL	270	0.04%	15,518	7.51%	-98.26%
MALE INT'L	168	0.02%			





# International Passenger Traffic

## Distribution by First Destination for December

Destination	December 2021		December 2020		
	Passengers	Rate of Total	Passengers	Rate of Total	Rate of Change
DEBRECEN	119	0.01%			
YEREVAN	113	0.01%			
OTHERS	680	0.10%	3,708	1.79%	-81.66%
<b>TOTAL</b>	<b>660,325</b>		<b>206,611</b>		







# Int'l Accumulated Passenger Traffic

## Distribution by First Destination

Destination	Accumulated 2021		Accumulated 2020		Rate of Change
	Passengers	Rate of Total	Passengers	Rate of Total	
NEW YORK - J.F.KENNEDY	400,660	6.58%	150,968	3.38%	165.39%
NEW YORK - NEWARK	333,009	5.46%	241,641	5.42%	37.81%
PARIS-CHARLES DE GAULLE	280,651	4.60%	186,110	4.17%	50.79%
ISTANBUL	270,291	4.43%	263,787	5.91%	2.46%
ISTANBUL-SABIHA GOKCHEN	260,165	4.27%	195,413	4.38%	33.13%
DUBAI	252,326	4.14%	69,625	1.56%	
KIEV KYIV-BORISPOL	238,739	3.92%	123,725	2.77%	92.95%
LONDON - HEATHROW	211,454	3.47%	160,191	3.59%	32.00%
ATHENS	205,164	3.36%	137,807	3.09%	48.87%
VIENNA	192,822	3.16%	116,527	2.61%	65.47%
FRANKFURT	165,189	2.71%	120,254	2.69%	37.36%
BUDAPEST	164,714	2.70%	93,639	2.10%	75.90%
BATUMI	127,957	2.10%	17,352	0.38%	
PRAGUE-RUZYNE	126,854	2.08%	47,158	1.05%	168.99%
AMSTERDAM	126,268	2.07%	100,863	2.26%	25.18%
BUCHAREST - OTOPENI	113,756	1.86%	100,172	2.24%	13.56%
ROME - FIUMICINO	112,804	1.85%	105,081	2.35%	7.34%
ANTALYA	101,669	1.66%	53,201	1.19%	91.10%
LARNACA	99,447	1.63%	43,251	0.97%	129.92%
ZURICH	97,633	1.60%	77,605	1.74%	25.80%
TBILISI	94,867	1.55%	44,170	0.99%	114.77%
PAPHOS	94,463	1.55%	36,207	0.81%	160.89%





# Int'l Accumulated Passenger Traffic

## Distribution by First Destination

Destination	Accumulated 2021		Accumulated 2020		Rate of Change
	Passengers	Rate of Total	Passengers	Rate of Total	
MIAMI INTERNATIONAL	87,290	1.43%	21,493	0.48%	
RHODES-PARADISI	86,555	1.42%	16,872	0.37%	
HERAKLION	85,732	1.40%	13,451	0.30%	
BERLIN BRANDENBURG INTL	84,940	1.39%	1,250	0.02%	
MADRID	72,342	1.18%	99,492	2.23%	-27.28%
SAN FRANCISCO	69,680	1.14%	57,602	1.29%	20.96%
PARIS-ORLY	60,009	0.98%	65,003	1.45%	-7.68%
LOS ANGELES	59,999	0.98%	17,489	0.39%	
MILAN-MALPENSA	59,970	0.98%	39,754	0.89%	50.85%
SOFIA	59,965	0.98%	83,929	1.88%	-28.55%
WARSAW	59,294	0.97%	65,482	1.46%	-9.44%
MOSCOW	58,892	0.96%	124,944	2.80%	-52.86%
TORONTO	53,544	0.87%	54,899	1.23%	-2.46%
MUNICH	47,061	0.77%	55,610	1.24%	-15.37%
LUTON	46,726	0.76%	94,099	2.11%	-50.34%
ADDIS ABABA	45,686	0.75%	42,561	0.95%	7.34%
MOSCOW-DOMODEDOVO	41,147	0.67%	18,209	0.40%	125.97%
THESSALONIKI	41,041	0.67%	22,393	0.50%	83.27%
BARCELONA	40,767	0.66%	50,694	1.13%	-19.58%
CHISINAU	37,885	0.62%	17,955	0.40%	110.99%
BRUSSELS	37,197	0.61%	33,290	0.74%	11.73%
BERGAMO	36,937	0.60%	13,641	0.30%	170.77%





# Int'l Accumulated Passenger Traffic

## Distribution by First Destination

Destination	Accumulated 2021		Accumulated 2020		Rate of Change
	Passengers	Rate of Total	Passengers	Rate of Total	
CHICAGO - O'HARE	32,827	0.53%	6,123	0.13%	
MINSK	27,687	0.45%	26,139	0.58%	5.92%
CORFU	26,291	0.43%	1,181	0.02%	
KRAKOW	25,880	0.42%	29,790	0.66%	-13.12%
TIVAT	25,649	0.42%	66		
ODESA	23,830	0.39%	17,914	0.40%	33.02%
VARNA	23,044	0.37%	20,062	0.45%	14.86%
LISBON	22,562	0.37%	19,602	0.43%	15.10%
GENEVA	20,946	0.34%	31,191	0.69%	-32.84%
MIKONOS	20,542	0.33%	514	0.01%	
MAHE SEYCHELLES INTL	19,951	0.32%	23,686	0.53%	-15.76%
BURGAS	19,769	0.32%	6,244	0.14%	
KHANIA-SOUDABAY	18,753	0.30%	18		
PHUKET	16,063	0.26%			
NICE	15,576	0.25%	7,010	0.15%	122.19%
SANTORINI	14,891	0.24%	49		
BANGKOK INTL.-SUARNABHUM	14,868	0.24%	44,026	0.98%	-66.22%
LYON - SATOLAS	14,690	0.24%	14,609	0.32%	0.55%
ABU DHABI	14,418	0.23%	397		
BADEN BADEN	14,338	0.23%	6,967	0.15%	105.79%
VILNIUS INTL	13,253	0.21%	14,412	0.32%	-8.04%
MARSEILLE	13,192	0.21%	15,410	0.34%	-14.39%





# Int'l Accumulated Passenger Traffic

## Distribution by First Destination

Destination	Accumulated 2021		Accumulated 2020		
	Passengers	Rate of Total	Passengers	Rate of Total	Rate of Change
TREVISO	12,878	0.21%			
NAPLES-CAPODICHINO	12,612	0.20%	5,359	0.12%	135.34%
BASEL	12,401	0.20%	11,266	0.25%	10.07%
BAKU HEYDAR ALIYEV INT'L	12,350	0.20%	9,046	0.20%	36.52%
MANCHESTER	12,070	0.19%	13,260	0.29%	-8.97%
MARRAKESH	11,721	0.19%			
DELHI	10,433	0.17%	23,018	0.51%	-54.67%
BELGRADE	10,291	0.16%	27,785	0.62%	-62.96%
DALAMAN	9,594	0.15%	1,547	0.03%	
ZAKYNTHOS	9,521	0.15%	4		
KHARKOV	9,386	0.15%	5,882	0.13%	59.57%
TASHKENT	9,281	0.15%	7,164	0.16%	29.55%
MEMMINGEN	8,936	0.14%	6,723	0.15%	32.91%
CLUJ NAPOCA	7,945	0.13%	5,612	0.12%	41.57%
RIGA	7,334	0.12%	1,828	0.04%	
BRUSSELS - CHARLEROI	7,150	0.11%	13,402	0.30%	-46.64%
LVOV	6,991	0.11%	5,007	0.11%	39.62%
MONTREAL - DORVAL	6,871	0.11%	5		
ST. PETERSBURG	6,236	0.10%	19,085	0.42%	-67.32%
SHANGHAI PUDONG	5,843	0.09%	1,141	0.02%	
HONG KONG INT'L	5,087	0.08%	29,352	0.65%	-82.66%
AMMAN (QUEEN ALIA INT'L)	4,964	0.08%	30,972	0.69%	-83.97%





# Int'l Accumulated Passenger Traffic

## Distribution by First Destination

Destination	Accumulated 2021		Accumulated 2020		
	Passengers	Rate of Total	Passengers	Rate of Total	Rate of Change
COPENHAGEN KASTRUP	4,531	0.07%	7,308	0.16%	-37.99%
BAHRAIN	4,446	0.07%	346		
HELSINKI	4,297	0.07%	4,180	0.09%	2.79%
IASI	4,258	0.06%	6,477	0.14%	-34.25%
BARI -PALESE MACCHIE	4,207	0.06%	22		
ZANZIBAR	3,971	0.06%	3,321	0.07%	19.57%
MALTA	3,936	0.06%	4,787	0.10%	-17.77%
PREVEZA	3,867	0.06%	106		
BOLOGNA-BORGO PANIGALE	3,658	0.06%	5,332	0.11%	-31.39%
POZNAN	3,386	0.05%	6,109	0.13%	-44.57%
REYKJAVIK	3,316	0.05%	33		
CASABLANCA-MOHAMMED V	3,115	0.05%	2		
WARSAW- MODLIN	3,052	0.05%	12,084	0.27%	-74.74%
CAIRO INTERNATIONAL	3,001	0.04%	8,291	0.18%	-63.80%
TIRANA	2,985	0.04%	184		
BRATISLAVA	2,904	0.04%	284		
CATANIA FONTANAROSSA	2,674	0.04%	32		
LJUBLJANA	2,334	0.03%	43		
GRENOBLE-SAUNT GEOIRS	2,286	0.03%	7,060	0.15%	-67.62%
VILAFRANCA-VERONA	2,145	0.03%	275		
TURIN	2,016	0.03%	5		
DEBRECEN	1,815	0.02%	6,204	0.13%	-70.74%





# Int'l Accumulated Passenger Traffic

## Distribution by First Destination

Destination	Accumulated 2021		Accumulated 2020		
	Passengers	Rate of Total	Passengers	Rate of Total	Rate of Change
HOUSTON INTERCONTINENTAL	1,496	0.02%	1,031	0.02%	45.10%
LONDON - GATWICK	1,474	0.02%	9,076	0.20%	-83.75%
DNEPROPETROVSK	1,301	0.02%	6,124	0.13%	-78.75%
KIEV-ZHULYANY	1,248	0.02%	32		
SALZBURG	1,120	0.01%	2,904	0.06%	-61.43%
KILIMANJARO	1,051	0.01%	285		
KOS	929	0.01%	51		
AL BATEEN EXECUTIVE AP	877	0.01%	353		148.44%
DUBAI AL MAKTOUM INT AP	857	0.01%	1,644	0.03%	-47.87%
BODRUM	699	0.01%	117		
NANTES	675	0.01%	2,990	0.06%	-77.42%
STOCKHOLM-ARLANDA	675	0.01%	5,916	0.13%	-88.59%
BORDEAUX	595		4,944	0.11%	-87.96%
SHARM EL SHEIKH	588		666	0.01%	-11.71%
MOSCOW-VNUKOVO	544		645	0.01%	-15.65%
CANCUN- MEXICO	532				
BERLIN -SCHOENEFELD	527		47,123	1.05%	-98.88%
RZESZOW-JASIONKA	508		1,118	0.02%	-54.56%
MUMBAI	473		12,900	0.28%	-96.33%
LIEGE	449		408		10.04%
ANKARA-ESENBUGA	441		49		
ALMATY	440		364		20.87%





# Int'l Accumulated Passenger Traffic

## Distribution by First Destination

Destination	Accumulated 2021		Accumulated 2020		
	Passengers	Rate of Total	Passengers	Rate of Total	Rate of Change
MALE INT'L	427				
KIGALI (KANOMBE INT'L)	423		3,811	0.08%	-88.90%
KATOWICE	391		10,523	0.23%	-96.28%
SKIATHOS	328		13		
BANGALORE	319				
KBELY(MIL)	310		39		
LONDON -STANSTED	308		7,198	0.16%	-95.72%
ZAGREB	280		3,200	0.07%	-91.25%
EDINBURGH	274		45		
NOI BAI HANOI INT	273		567	0.01%	-51.85%
PODGORICA	272		33		
VAN DON INTERNATIONAL AIR	271				
GOA	257		3,422	0.07%	-92.48%
SHANNON	254		340		-25.29%
BEIJING	254		8,843	0.19%	-97.12%
PHNOM PENH INTERNATIONAL	243		416		-41.58%
ANDREWS	232		384		-39.58%
BILLUND	230		4		
WROCLAW	212		3,538	0.07%	-94.00%
BATA AIRPORT	210				
KLAGENFURT	206		3		
PANAMA CITY	200		177		12.99%





# Int'l Accumulated Passenger Traffic

## Distribution by First Destination

Destination	Accumulated 2021		Accumulated 2020		Rate of Change
	Passengers	Rate of Total	Passengers	Rate of Total	
ACCRA-KOTOKA	197		45		
CHENGDU	191		2,671	0.05%	-92.84%
VITORIA	186		98		89.79%
VAGAR AIRPORT	184				
YEREVAN	166		1,393	0.03%	-88.08%
IZMIR-ADNAN MENDERES	161		8		
RABAT	154		122		26.22%
SAMOS	146		5		
ASTANA	137				
SAO PAULO (GUARULHOS INT')	134		15,433	0.34%	-99.13%
BUCHAREST- BANEASA	124		27		
ROTTERDAM	124		23		
TALLINN-ULEMISTE	123		1		
LILLE-LESQUINN	121				
KALAMATA	116		239		-51.46%
ZADAR	109		48		127.08%
DUSSELDORF	108		697	0.01%	-84.50%
HURGHADA	107				
GIBRALTAR	107		68		57.35%
JOHANNESBURG	106		12,876	0.28%	-99.17%
PLOVDIV	104		2,021	0.04%	-94.85%
KRASNODAR	103		2,364	0.05%	-95.64%







# Int'l Accumulated Passenger Traffic

## Distribution by First Destination

Destination	Accumulated 2021		Accumulated 2020		Rate of Change
	Passengers	Rate of Total	Passengers	Rate of Total	
GLASGOW	102		306		-66.66%
OTHERS	6,648	0.10%	207,486	4.65%	-96.79%
<b>TOTAL</b>	<b>6,088,107</b>		<b>4,457,439</b>		<b>36.58%</b>



# Cargo Activity





# Cargo Handling

## Distribution by Transporter

Transporter	December 2021 (Ton)	December 2020 (Ton)	Rate of Change
Cargo on Passenger Aircrafts - Incoming	5,914	3,553	66.45%
Cargo on Passenger Aircrafts - Outgoing	5,517	3,724	48.14%
<b>Total Cargo on Passenger Aircrafts</b>	<b>11,431</b>	<b>7,277</b>	<b>57.08%</b>
Cargo on Cargo Aircrafts - Incoming	15,370	16,452	-6.57%
Cargo on Cargo Aircrafts - Outgoing	7,679	8,309	-7.58%
<b>Total Cargo on Cargo Aircrafts</b>	<b>23,049</b>	<b>24,761</b>	<b>-6.91%</b>
<b>Total</b>	<b>34,480</b>	<b>32,038</b>	<b>7.62%</b>

## Distribution by Months

Month	2021 (ton)			2020 (ton)			Rate of Change
	Cargo	Mail	Total	Cargo	Mail	Total	
January	28,571	632	29,203	28,568	1,395	29,964	-2.53%
February	26,508	322	26,830	28,188	1,033	29,221	-8.18%
March	31,396	546	31,942	26,511	535	27,047	18.09%
April	28,779	745	29,524	20,673	116	20,790	42.01%
May	29,512	544	30,056	26,974	112	27,086	10.96%
June	30,775	586	31,361	24,918	216	25,134	24.77%
July	30,404	682	31,086	23,733	331	24,065	29.17%
August	33,558	582	34,139	24,252	465	24,718	38.11%
September	28,160	602	28,763	23,039	526	23,566	22.05%
October	33,037	704	33,741	26,262	652	26,914	25.36%
November	33,828	723	34,550	29,383	665	30,048	14.98%
December	33,833	649	34,480	31,185	854	32,038	7.62%
<b>Total</b>	<b>368,361</b>	<b>7,317</b>	<b>375,675</b>	<b>313,686</b>	<b>6,900</b>	<b>320,591</b>	<b>17.18%</b>





# Cargo Handling on Passenger Aircrafts

## Distribution by Airline for December

		December 2021				December 2020				
Airline	Incoming Cargo (Ton)	Outgoing Cargo (Ton)	Cargo (Ton)	Rate of Total	Incoming Cargo (Ton)	Outgoing Cargo (Ton)	Cargo (Ton)	Rate of Total	Rate of Change	
LY EL AL ISRAEL AIRLINES	1,640	1,823	3,463	30.29%	800	901	1,701	23.37%	103.58%	
UA UNITED AIRLINES	791	1,137	1,928	16.86%	846	1,300	2,147	29.50%	-10.20%	
TK TURKISH AIRLINES	906	154	1,060	9.27%	433	126	558	7.66%	89.96%	
AA AMERICAN AIRLINES	396	475	871	7.61%						
AF AIR FRANCE	343	309	652	5.70%	5	12	17	0.23%		
DL DELTA AIRLINES	225	277	502	4.39%	282	452	734	10.08%	-31.60%	
AC AIR CANADA	158	195	353	3.08%	42	93	135	1.85%	161.48%	
SU AEROFLOT RUSSIAN AIRLINES	125	172	297	2.59%	54	71	125	1.71%	137.60%	
UX AIR EUROPA Lineas Aereas	167	95	262	2.29%						
EY ETIHAD AIRWAYS	109	117	225	1.96%						
BA BRITISH AIRWAYS PLC	98	118	216	1.88%	201	44	246	3.38%	-12.19%	
VS VIRGIN ATLANTIC AIRWAYS	106	80	186	1.62%	204	103	306	4.20%	-39.21%	
LX SWISS INT'L AIRLINES	86	75	161	1.40%	161	176	337	4.63%	-52.22%	
IB IBERIA	85	61	145	1.26%						
AI AIR INDIA	64	74	137	1.19%	7	13	20	0.27%		
FZ FLYDUBAI	119	16	135	1.18%	30	5	35	0.48%		
PC PEGASUS AIRLINES	48	86	134	1.17%	34	44	78	1.07%	71.79%	
LH LUFTHANSA	76	49	125	1.09%	21	10	31	0.42%		
CX CATHAY PACIFIC AIRWAYS	93	28	121	1.05%	106	84	190	2.61%	-36.31%	
ET ETHIOPIAN AIRLINES	49	27	75	0.65%	259	254	512	7.03%	-85.35%	
PS UKRAINE INTL AIR	41	9	50	0.43%	34	13	47	0.64%	6.38%	
GF GULF AIR - BAHREIN	20	26	46	0.40%						





# Cargo Handling on Passenger Aircrafts

## Distribution by Airline for December

December 2021					December 2020				
Airline	Incoming Cargo (Ton)	Outgoing Cargo (Ton)	Cargo (Ton)	Rate of Total	Incoming Cargo (Ton)	Outgoing Cargo (Ton)	Cargo (Ton)	Rate of Total	Rate of Change
A3 AEGEAN AIRLINES	27	15	42	0.36%	5	3	8	0.10%	
QS SMARTWINGS	28	3	31	0.27%					
HY UZBEKISTAN AIR	10	18	28	0.24%					
KL K.L.M.	2	21	24	0.20%					
LO LOT POLISH AIRLINES	21	2	23	0.20%					
OS AUSTRIAN AIRLINES	15	6	21	0.18%	3	1	3	0.04%	
AZ ITALYA TRASPORTO AEREO	2	14	17	0.14%					
B2 BELAVIA AIRLINE	6	8	14	0.12%	3	5	8	0.10%	75.00%
RO TAROM - RUMANIAN AIR TRAN	8	3	12	0.10%	1	1	2	0.02%	
BT AIR BALTIC	9	2	11	0.09%					
TP AIR PORTUGAL	5	3	8	0.06%					
SN BRUSSELS AIRLINES	7	1	8	0.06%					
HM AIR SEYCHELLES	7		7	0.06%	21	2	23	0.31%	-69.56%
9U AIR MOLDOVA	1	6	7	0.06%	1	8	8	0.10%	-12.50%
6H ISRAIR AIRLINES	3	3	7	0.06%	2	4	5	0.06%	40.00%
OTHERS	17	10	28	0.24%					
<b>TOTAL</b>	<b>5,914</b>	<b>5,517</b>	<b>11,431</b>		<b>3,553</b>	<b>3,724</b>	<b>7,277</b>		<b>57.08%</b>





# Accumulated Cargo Handling on Passengers Aircrafts

## Distribution by Airline

		Accumulated 2021				Accumulated 2020				
Airline		Incoming Cargo (Ton)	Outgoing Cargo (Ton)	Cargo (Ton)	Rate of Total	Incoming Cargo (Ton)	Outgoing Cargo (Ton)	Cargo (Ton)	Rate of Total	Rate of Change
LY	EL AL ISRAEL AIRLINES	11,849	15,171	27,019	26.47%	8,810	8,464	17,273	23.29%	56.42%
UA	UNITED AIRLINES	7,088	11,277	18,364	17.99%	8,316	10,690	19,007	25.63%	-3.38%
TK	TURKISH AIRLINES	7,184	1,111	8,295	8.12%	4,338	1,297	5,635	7.59%	47.20%
DL	DELTA AIRLINES	3,277	3,510	6,786	6.64%	1,960	2,389	4,348	5.86%	56.07%
AA	AMERICAN AIRLINES	2,096	3,321	5,417	5.30%					
LX	SWISS INT'L AIRLINES	3,210	1,858	5,069	4.96%	2,770	1,813	4,583	6.18%	10.60%
AF	AIR FRANCE	2,958	1,738	4,696	4.60%	79	168	247	0.33%	
VS	VIRGIN ATLANTIC AIRWAYS	2,366	1,317	3,683	3.60%	1,235	773	2,008	2.70%	83.41%
AC	AIR CANADA	1,460	2,038	3,498	3.42%	1,563	1,984	3,547	4.78%	-1.38%
ET	ETHIOPIAN AIRLINES	2,144	1,318	3,462	3.39%	1,092	799	1,890	2.54%	83.17%
BA	BRITISH AIRWAYS PLC	1,494	1,561	3,054	2.99%	2,068	1,142	3,209	4.32%	-4.83%
IB	IBERIA	1,335	657	1,992	1.95%	709	218	927	1.25%	114.88%
SU	AEROFLOT RUSSIAN AIRLINES	652	1,152	1,804	1.76%	1,893	1,775	3,668	4.94%	-50.81%
EY	ETIHAD AIRWAYS	868	867	1,734	1.69%	9	9	18	0.02%	
PC	PEGASUS AIRLINES	665	491	1,156	1.13%	324	313	637	0.85%	81.47%
CX	CATHAY PACIFIC AIRWAYS	798	345	1,144	1.12%	750	532	1,282	1.72%	-10.76%
FZ	FLYDUBAI	672	91	763	0.74%	38	7	45	0.06%	
AI	AIR INDIA	376	378	754	0.73%	509	286	795	1.07%	-5.15%
UX	AIR EUROPA Lineas Aereas	395	286	681	0.66%					
LH	LUFTHANSA	349	176	525	0.51%	299	212	510	0.68%	2.94%
PS	UKRAINE INTL AIR	364	90	454	0.44%	218	125	343	0.46%	32.36%
A3	AEGEAN AIRLINES	180	64	244	0.23%	69	82	151	0.20%	61.58%





# Accumulated Cargo Handling on Passengers Aircrafts

## Distribution by Airline

		Accumulated 2021				Accumulated 2020				
Airline		Incoming Cargo (Ton)	Outgoing Cargo (Ton)	Cargo (Ton)	Rate of Total	Incoming Cargo (Ton)	Outgoing Cargo (Ton)	Cargo (Ton)	Rate of Total	Rate of Change
LO	LOT POLISH AIRLINES	131	15	146	0.14%	65	22	87	0.11%	67.81%
OS	AUSTRIAN AIRLINES	93	52	145	0.14%	51	24	75	0.10%	93.33%
HM	AIR SEYCHELLES	112	1	113	0.11%	38	4	41	0.05%	175.60%
HY	UZBEKISTAN AIR	41	70	111	0.10%	71	68	139	0.18%	-20.14%
RO	TAROM - RUMANIAN AIR TRAN	77	32	109	0.10%	38	28	67	0.09%	62.68%
QS	SMARTWINGS	92	17	108	0.10%	65	34	98	0.13%	10.20%
KL	K.L.M.	17	82	99	0.09%	9	11	21	0.02%	
GF	GULF AIR - BAHREIN	49	43	92	0.09%					
B2	BELAVIA AIRLINE	41	48	88	0.08%	63	80	143	0.19%	-38.46%
6H	ISRAIR AIRLINES	35	40	75	0.07%	73	146	218	0.29%	-65.59%
BT	AIR BALTIC	51	15	66	0.06%	2	3	5		
AZ	ITALYA TRASPORTO AEREO	12	50	62	0.06%	73	126	199	0.26%	-68.84%
SN	BRUSSELS AIRLINES	38	5	43	0.04%	71	18	88	0.11%	-51.13%
9U	AIR MOLDOVA	7	27	35	0.03%	7	26	33	0.04%	6.06%
TP	AIR PORTUGAL	14	17	31	0.03%	30	7	37	0.04%	-16.21%
	OTHERS	77	76	153	0.14%	1,922	850	2,772	3.73%	-94.48%
	<b>TOTAL</b>	<b>52,669</b>	<b>49,404</b>	<b>102,072</b>		<b>39,623</b>	<b>34,523</b>	<b>74,148</b>		<b>37.65%</b>





# Cargo Handling on Cargo Aircrafts

## Distribution by Airlines December

		December 2021				December 2020				
Airline		Incoming Cargo (Ton)	Outgoing Cargo (Ton)	Cargo (Ton)	Rate of Total	Incoming Cargo (Ton)	Outgoing Cargo (Ton)	Cargo (Ton)	Rate of Total	Rate of Change
ICL	C.A.L ISRAELI CARGO	4,195	1,604	5,798	25.15%	3,020	1,448	4,468	18.04%	29.76%
QY	EUROPEAN AIR TRANSPORT	1,535	1,034	2,569	11.14%	1,387	942	2,329	9.40%	10.30%
LY	EL AL ISRAEL AIRLINES	1,361	672	2,033	8.82%	3,123	1,716	4,839	19.54%	-57.98%
TK	TURKISH AIRLINES	1,696	322	2,018	8.75%	2,217	806	3,023	12.20%	-33.24%
AZG	SILK WAY WEST AIRLINES	636	718	1,354	5.87%	658	781	1,439	5.81%	-5.90%
LH	LUFTHANSA	838	361	1,198	5.19%	566	321	887	3.58%	35.06%
MNB	MNG CARGO AIRLINES	1,075	112	1,188	5.15%	1,482	285	1,767	7.13%	-32.76%
AJT	AMERIJET INTERNATIONAL	460	711	1,172	5.08%					
FX	FEDERAL EXPRESS	631	465	1,096	4.75%	515	398	912	3.68%	20.17%
CX	CATHAY PACIFIC AIRWAYS	435	445	880	3.81%	278	148	426	1.72%	106.57%
5X	UPS AIRLINES	439	305	744	3.22%					
EY	ETIHAD AIRWAYS	319	230	549	2.38%					
3V	ASL AIRLINES BELGIUM	334	193	527	2.28%	313	203	516	2.08%	2.13%
HU	HAINAN AIRLINES	369	73	442	1.91%	690	2	692	2.79%	-36.12%
3U	SICHUAN AIRLINES	274	84	357	1.54%	414	103	517	2.08%	-30.94%
ET	ETHIOPIAN AIRLINES	194	162	356	1.54%					
M4	POSTE AIR CARGO	205	74	279	1.21%					
ABD	ATLANTA ICELANDIC	158		158	0.68%					
IB	IBERIA	49	42	90	0.39%	128	60	188	0.75%	-52.12%
SU	AEROFLOT RUSSIAN AIRLINES	51	14	65	0.28%	155	175	330	1.33%	-80.30%
AF	AIR FRANCE	23	13	36	0.15%					
VDA	VOLGA DNEPER	28		28	0.12%					







# Cargo Handling on Cargo Aircrafts

## Distribution by Airlines December

		December 2021			December 2020					
Airline		Incoming Cargo (Ton)	Outgoing Cargo (Ton)	Cargo (Ton)	Rate of Total	Incoming Cargo (Ton)	Outgoing Cargo (Ton)	Cargo (Ton)	Rate of Total	Rate of Change
PLM	WAMOS AIR	24		24	0.10%					
LYX	SMARTLYNX AIRLINES MALTA	23		23	0.09%					
RDA	RADA AIRLINES		22	22	0.09%					
	OTHERS	18	24	42	0.18%	1,507	922	2,429	9.80%	-98.27%
	<b>TOTAL</b>	<b>15,370</b>	<b>7,679</b>	<b>23,049</b>		<b>16,452</b>	<b>8,309</b>	<b>24,761</b>		<b>-6.91%</b>





# Accumulated Cargo Handling on Cargo Aircrafts

## Distribution by Airline

		Accumulated 2021				Accumulated 2020				
Airline		Incoming Cargo (Ton)	Outgoing Cargo (Ton)	Cargo (Ton)	Rate of Total	Incoming Cargo (Ton)	Outgoing Cargo (Ton)	Cargo (Ton)	Rate of Total	Rate of Change
ICL	C.A.L ISRAELI CARGO	42,859	21,462	64,321	23.50%	21,489	12,186	33,675	13.66%	91.00%
LY	EL AL ISRAEL AIRLINES	29,224	17,340	46,564	17.01%	29,399	17,217	46,616	18.91%	-0.11%
TK	TURKISH AIRLINES	25,955	5,607	31,562	11.53%	19,447	6,035	25,481	10.33%	23.86%
QY	EUROPEAN AIR TRANSPORT	14,618	10,061	24,678	9.01%	12,327	8,771	21,098	8.56%	16.96%
MN B	MNG CARGO AIRLINES	14,512	2,598	17,110	6.25%	12,612	3,097	15,709	6.37%	8.91%
AZG	SILK WAY WEST AIRLINES	7,701	8,853	16,554	6.05%	8,753	8,470	17,222	6.98%	-3.87%
LH	LUFTHANSA	7,176	5,347	12,522	4.57%	7,355	5,555	12,910	5.23%	-3.00%
FX	FEDERAL EXPRESS	6,280	4,283	10,563	3.86%	5,430	3,958	9,388	3.80%	12.51%
CX	CATHAY PACIFIC AIRWAYS	4,612	3,101	7,713	2.81%	1,950	1,236	3,186	1.29%	142.09%
3V	ASL AIRLINES BELGIUM	3,269	2,024	5,293	1.93%	3,770	2,241	6,010	2.43%	-11.93%
HU	HAINAN AIRLINES	3,984	191	4,175	1.52%	2,580	43	2,622	1.06%	59.22%
EY	ETIHAD AIRWAYS	1,902	2,087	3,989	1.45%	8		8		
AJT	AMERIJET INTERNATIONAL	1,817	1,989	3,806	1.39%					
ET	ETHIOPIAN AIRLINES	1,771	896	2,667	0.97%	158	70	228	0.09%	
3U	SICHUAN AIRLINES	1,469	591	2,060	0.75%	4,157	931	5,088	2.06%	-59.51%
IB	IBERIA	1,063	427	1,490	0.54%	160	71	231	0.09%	
5X	UPS AIRLINES	857	599	1,456	0.53%					
SU	AEROFLOT RUSSIAN AIRLINES	711	554	1,265	0.46%	1,028	836	1,864	0.75%	-32.13%
ABD	ATLANTA ICELANDIC	826	380	1,205	0.44%	246	66	312	0.12%	
M4	POSTE AIR CARGO	797	300	1,097	0.40%	7		7		
PLM	WAMOS AIR	309		309	0.11%					
VDA	VOLGA DNEPER	93	68	160	0.05%					





# Accumulated Cargo Handling on Cargo Aircrafts

## Distribution by Airline

		Accumulated 2021				Accumulated 2020				
Airline		Incoming Cargo (Ton)	Outgoing Cargo (Ton)	Cargo (Ton)	Rate of Total	Incoming Cargo (Ton)	Outgoing Cargo (Ton)	Cargo (Ton)	Rate of Total	Rate of Change
AF	AIR FRANCE	23	13	36	0.01%					
LYX	SMARTLYNX AIRLINES MALTA	23		23						
RDA	RADA AIRLINES		22	22		11		11		100.00%
	OTHERS	8,030	4,932	12,962	4.73%	26,152	18,623	44,775	18.16%	-71.05%
	<b>TOTAL</b>	<b>179,879</b>	<b>93,723</b>	<b>273,603</b>		<b>157,039</b>	<b>89,403</b>	<b>246,443</b>		<b>11.02%</b>





# Cargo Handling on Cargo Aircrafts

## Distribution by Countries for December

Country	December 2021				December 2020				
	Incoming Cargo (Ton)	Outgoing Cargo (Ton)	Cargo (Ton)	Rate of Total	Incoming Cargo (Ton)	Outgoing Cargo (Ton)	Cargo (Ton)	Rate of Total	Rate of Change
BELGIUM	3,146	2,692	5,838	25.32%	3,550	3,789	7,339	29.63%	-20.45%
GERMANY	2,758	1,462	4,220	18.30%	2,035	938	2,972	12.00%	41.99%
CHINA	3,261	928	4,189	18.17%	3,484	505	3,988	16.10%	5.04%
TURKEY	2,771	415	3,186	13.82%	3,775	1,118	4,894	19.76%	-34.89%
AZERBAIJAN	636	718	1,354	5.87%	658	784	1,443	5.82%	-6.16%
NORWAY	913		913	3.96%	923		923	3.72%	-1.08%
UNITED ARAB EMIRATES	339	246	584	2.53%					
CYPRUS	500	73	574	2.49%	444	162	606	2.44%	-5.28%
FRANCE	209	363	572	2.48%	104	336	440	1.77%	30.00%
EGYPT		367	367	1.59%		263	263	1.06%	39.54%
ETHIOPIA	194	162	356	1.54%		1	1		
ITALY	211	81	293	1.27%	20	6	26	0.10%	
AUSTRIA	162		162	0.70%	176		176	0.71%	-7.95%
SPAIN	72	42	114	0.49%	158	62	220	0.88%	-48.18%
RUSSIAN FEDERATION	51	14	65	0.28%	382	184	566	2.28%	-88.51%
INDIA	52	12	64	0.27%	27		27	0.10%	137.03%
MALTA		62	62	0.26%					
UNITED KINGDOM	27	6	33	0.14%	241	100	341	1.37%	-90.32%
SWITZERLAND	28		28	0.12%	108		108	0.43%	-74.07%
GREECE		19	19	0.08%					
SOUTH KOREA	15		15	0.06%		50	50	0.20%	-70.00%
THAILAND	13		13	0.05%					





# Cargo Handling on Cargo Aircrafts

## Distribution by Countries for December

Country	December 2021				December 2020				
	Incoming Cargo (Ton)	Outgoing Cargo (Ton)	Cargo (Ton)	Rate of Total	Incoming Cargo (Ton)	Outgoing Cargo (Ton)	Cargo (Ton)	Rate of Total	Rate of Change
OTHERS	12	17	29	0.12%	368	12	380	1.53%	-92.36%
TOTAL	15,370	7,679	23,049		16,452	8,309	24,761		-6.91%





# Accumulated Cargo Handling on Cargo Aircrafts

## Distribution by Countries

Countries	Accumulated 2021				Accumulated 2020				
	Incoming Cargo (Ton)	Outgoing Cargo (Ton)	Cargo (Ton)	Rate of Total	Incoming Cargo (Ton)	Outgoing Cargo (Ton)	Cargo (Ton)	Rate of Total	Rate of Change
BELGIUM	43,831	38,876	82,707	30.22%	37,799	39,594	77,392	31.40%	6.86%
TURKEY	35,433	8,356	43,789	16.00%	27,197	10,278	37,475	15.20%	16.84%
GERMANY	30,213	11,886	42,100	15.38%	28,452	14,251	42,703	17.32%	-1.41%
CHINA	30,498	7,849	38,347	14.01%	20,547	3,446	23,994	9.73%	59.81%
AZERBAIJAN	7,702	8,802	16,504	6.03%	8,712	8,547	17,259	7.00%	-4.37%
NORWAY	11,231	51	11,282	4.12%	10,997		10,997	4.46%	2.59%
UNITED ARAB EMIRATES	2,996	2,452	5,448	1.99%	24		24		
CYPRUS	4,214	910	5,124	1.87%	7,741	657	8,398	3.40%	-38.98%
EGYPT		4,393	4,393	1.60%	8	713	721	0.29%	
FRANCE	1,291	2,707	3,999	1.46%	1,383	2,472	3,855	1.56%	3.73%
ETHIOPIA	1,771	896	2,667	0.97%	158	79	237	0.09%	
UNITED KINGDOM	1,308	1,356	2,663	0.97%	3,588	2,966	6,554	2.65%	-59.36%
SPAIN	1,794	434	2,228	0.81%	1,531	513	2,044	0.82%	9.00%
RUSSIAN FEDERATION	1,228	610	1,839	0.67%	2,368	1,097	3,465	1.40%	-46.92%
INDIA	974	460	1,434	0.52%	419	204	623	0.25%	130.17%
ITALY	1,006	413	1,419	0.51%	406	125	531	0.21%	167.23%
AUSTRIA	705		705	0.25%	465	646	1,111	0.45%	-36.54%
SWITZERLAND	259	202	462	0.16%	699	64	763	0.30%	-39.44%
SOUTH KOREA	145	292	438	0.16%	118	235	353	0.14%	24.07%
THAILAND	142		142	0.05%					
GREECE	57	81	139	0.05%	38	3	41	0.01%	
MALTA		108	108	0.03%		60	60	0.02%	80.00%





# Accumulated Cargo Handling on Cargo Aircrafts

## Distribution by Countries

Countries	Accumulated 2021				Accumulated 2020				
	Incoming Cargo (Ton)	Outgoing Cargo (Ton)	Cargo (Ton)	Rate of Total	Incoming Cargo (Ton)	Outgoing Cargo (Ton)	Cargo (Ton)	Rate of Total	Rate of Change
OTHERS	3,078	2,587	5,665	2.07%	4,389	3,455	7,843	3.18%	-27.76%
TOTAL	179,879	93,723	273,603		157,039	89,403	246,443		11.02%





# Domestic Activity



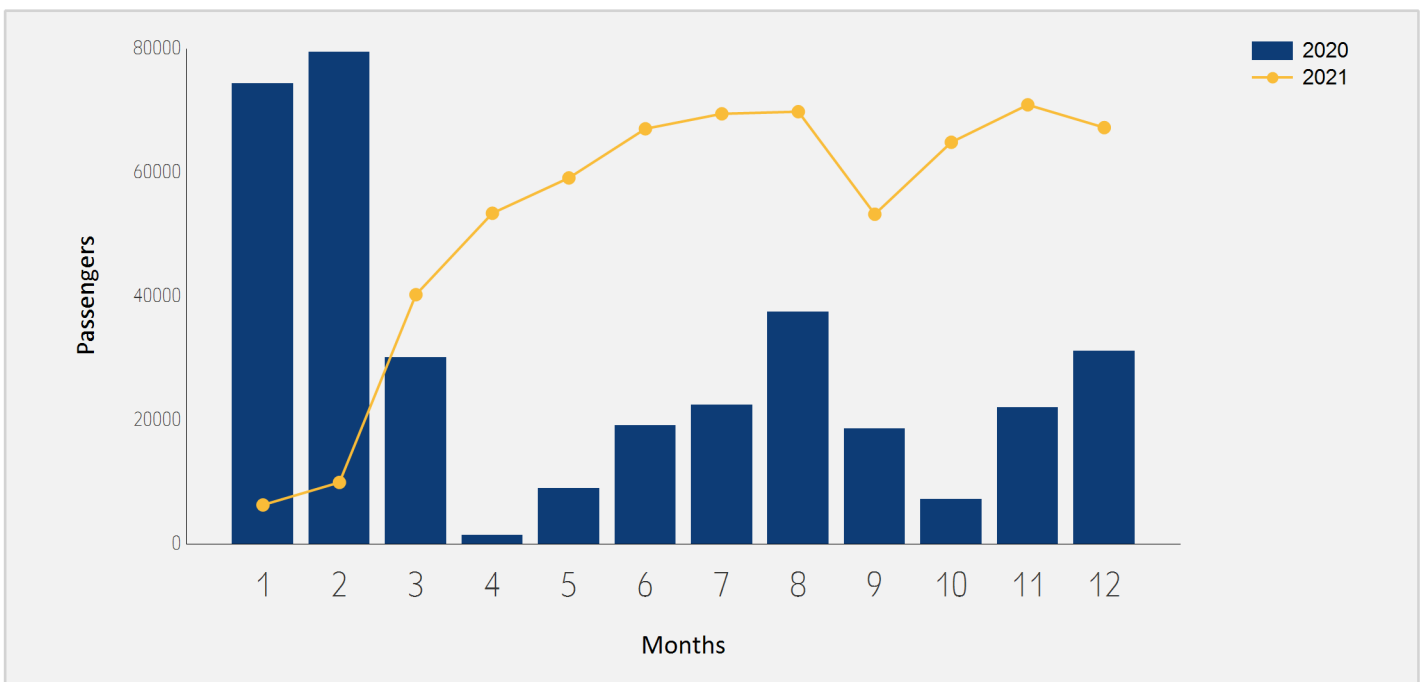




# Domestic Passenger Traffic

## Distribution by Months

Month	2021	2020	Rate of Change
January	6,294	74,380	-91.53%
February	9,936	79,475	-87.49%
March	40,263	30,137	33.59%
April	53,421	1,412	
May	59,126	8,989	
June	67,065	19,115	
July	69,490	22,417	
August	69,828	37,477	86.32%
September	53,261	18,645	185.65%
October	64,886	7,164	
November	70,938	22,021	
December	67,261	31,122	116.12%
<b>Total</b>	<b>631,769</b>	<b>352,354</b>	<b>79.29%</b>

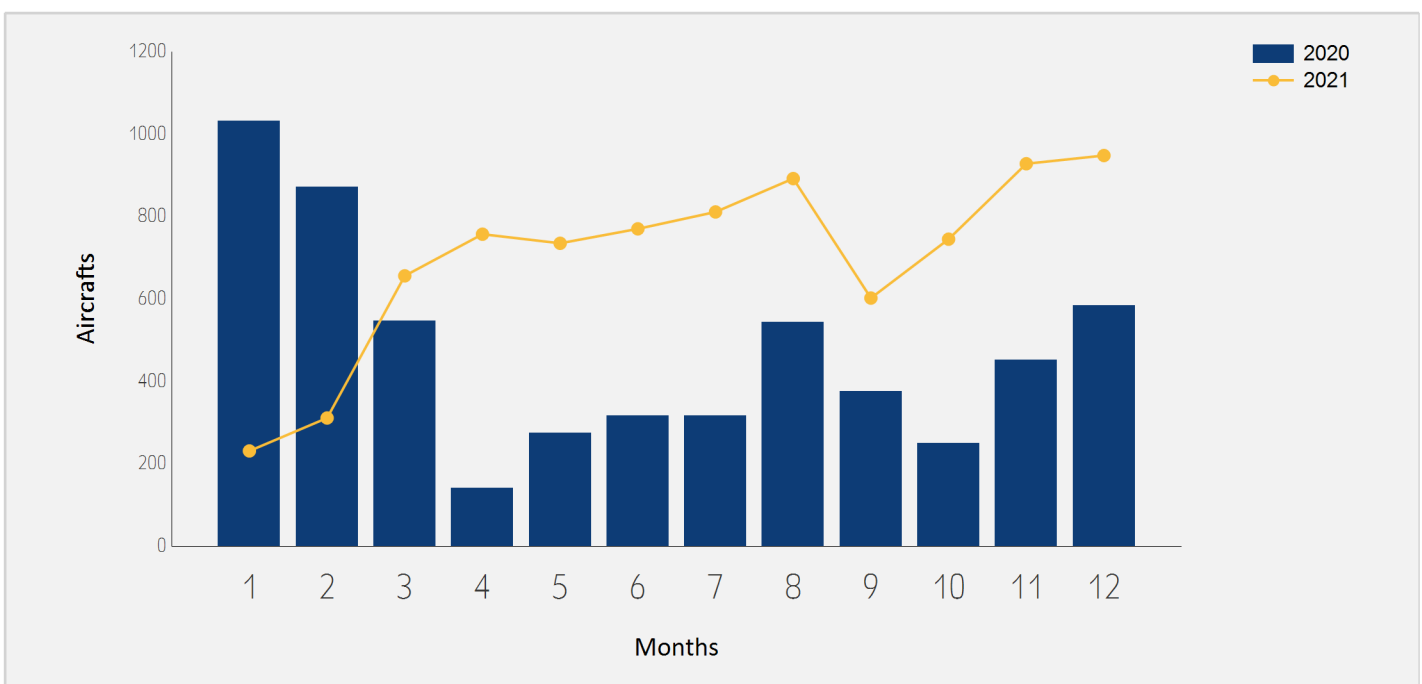




# Domestic Aircrafts Traffic

## Distribution by Months

Month	2021	2020	Rate of Change
January	231	1,032	-77.61%
February	311	871	-64.29%
March	656	547	19.92%
April	757	141	
May	735	274	168.24%
June	770	317	142.90%
July	811	316	156.64%
August	892	543	64.27%
September	602	376	60.10%
October	745	250	198.00%
November	928	451	105.76%
December	948	584	62.32%
<b>Total</b>	<b>8,386</b>	<b>5,702</b>	<b>47.07%</b>





# Domestic Passengers Traffic

## Distribution by Airlines for December

		December 2021		December 2020		
Airline		Passengers	Rate of Total	Passengers	Rate of Total	Rate of Change
IZ	ARKIA ISRAELI AIRLINES	42,249	62.81%	13,828	44.43%	
6H	ISRAIR AIRLINES	24,719	36.75%	17,262	55.46%	43.19%
	OTHERS	293	0.43%	32	0.10%	
TOTAL		67,261		31,122		116.12%

# Accumulated Domestic Passengers Traffic

## Distribution by Airlines

		Accumulated 2021		Accumulated 2020		
Airline		Passengers	Rate of Total	Passengers	Rate of Total	Rate of Change
IZ	ARKIA ISRAELI AIRLINES	367,277	58.13%	163,724	46.46%	124.32%
6H	ISRAIR AIRLINES	263,248	41.66%	188,068	53.37%	39.97%
	OTHERS	1,244	0.19%	562	0.15%	121.35%
TOTAL		631,769		352,354		79.29%





# Domestic Passenger Traffic

## Distribution by Destinations for December

Destination	December 2021		December 2020		Rate of Change
	Passengers	Rate of Total	Passengers	Rate of Total	
RAMON	66,650	99.09%	31,106	99.94%	114.26%
OTHERS	611	0.90%	16	0.05%	
<b>TOTAL</b>	<b>67,261</b>		<b>31,122</b>		<b>116.12%</b>

# Accumulated Domestic Passenger Traffic

## Distribution by Destinations

Destination	Accumulated 2021		Accumulated 2020		Rate of Change
	Passengers	Rate of Total	Passengers	Rate of Total	
RAMON	629,887	99.70%	350,854	99.57%	79.52%
OTHERS	1,882	0.29%	1,500	0.42%	25.46%
<b>TOTAL</b>	<b>631,769</b>		<b>352,354</b>		<b>79.29%</b>

