

Monthly Report

Ben Gurion International Airport

September 2021



Israel Airport Authority

Ben Gurion International Airport

Produced by the Industry & Management Department

This report is protected by copyright and is the exclusive property of the Israel Airports Authority.

It must be emphasized that the data in the report are based on the reports of the airlines, and received under their responsibility.

The information is intended for personal use, and therefore may not be quoted or passed on to any third party without written permission from the Israel Airports Authority.

In addition, no commercial use may be made of this report.

Edit Yehoshua

Activity Coordinator

Tel. +972-3-9752017

Email: edity@iaa.gov.il

Rachel Lehava

Manager, Industrial & Management Dep.

Tel. +972-3-9752019

Email: rachelle@iaa.gov.il

Yossi Tzemach

Head, Industrial & Management Dep.

Tel. +972-3-9752020

Email: yossiz@iaa.gov.il



Dear friends and partners,

I hereby respectfully submit for your review a report summarizing the aviation activity at Ben - Gurion International Airport in September 2021.

During the month, a total of 785,959 passengers on 7,590 international and domestic flights passed through Ben- Gurion Airport.

International passenger traffic in September totaled 732,695, representing an increase of 313% compared to September 2020.

International aircraft traffic totaled 6,988 flights, representing an increase of 125.12% compared to September 2020.

International passenger traffic at Terminal 3 this month totaled 710,278.

Passengers on International flights from Terminal 1, totaled 22,417.

On domestic flights 53,264 passengers passed through Ben- Gurion Airport this month, compared with 18,645 in September 2020, an increase of 185.67%.

Israeli airlines carried 222,551 passengers in this month, 30.37% of all travelers passing through Ben - Gurion Airport.

The airlines which contributed the most to the increase of passenger traffic this month are: EL AL ISRAEL AIRLINES, RYANAIR and ISRAIR AIRLINES.

The Destination with the highest volume of activity was KIEV KYIV-BORISPOL with a total of 49,120 passengers to and from.

The country with the highest volume of activity was the UNITED STATES, with 104,454 passengers, constituting 14.25% of all activity.

The Countries which contributed the most to the increase of passenger traffic this month are: Of the leading countries, the highest growth relative to last September was recorded in passenger traffic to UNITED STATES, GREECE and UKRAINE.

Cargo transportation this month stood at 28,957 tons and reflects an increase of 22.87% compared to September 2020. 10,251 tons were transported in passenger aircraft and 18,706 tons in cargo aircraft.

Below you will find additional tables providing details about movements of aircraft, passengers and cargo at Ben - Gurion International Airport.

Sincerely yours,
Shmuel Zakay
Managing Director,
Ben-Gurion International Airport



Content



Aviation Activity

Aviation Activity Summary	1
International Activity Summary	2 - 4
Domestic Activity Summary	5



International Activity

Distribution By Months	7 - 8
Distribution By Airlines	9 - 17
Distribution By Countries	18 - 23
Distribution By First Destination	24 - 37



Cargo Activity

Distribution by Transporter	39
Distribution By Months	39
Distribution By Airlines	40 - 44
Distribution By Countries	45 - 47



Domestic Activity

Distribution By Months	49 - 50
Distribution By Airlines	51
Distribution By Destinations	52





Passengers and Aircrafts

Aviation Activity at Ben Gurion International Airport

International Activity

	Current Month			Accumulated Since the beginning of the year		
	September 2021	September 2020	Rate Of Change	2021	2020	Rate Of Change
Incoming Aircrafts	3,498	1,543	126.70%	22,050	19,643	12.25%
Outgoing Aircrafts	3,490	1,561	123.57%	22,040	19,636	12.24%
Total Aircrafts	6,988	3,104	125.12%	44,090	39,279	12.24%
Incoming Passengers	356,848	71,651		1,818,243	1,928,455	-5.71%
Outgoing Passengers	375,847	105,227		1,888,320	1,955,089	-3.41%
Transit Passengers	5			136	1,982	-93.13%
Total Passengers	732,695	176,878		3,706,563	3,883,544	-4.55%

Domestic Activity

	Current Month			Accumulated Since the beginning of the year		
	September 2021	September 2020	Rate Of Change	2021	2020	Rate Of Change
Aircrafts	602	376	60.10%	5,763	4,417	30.47%
Passengers	53,264	18,645	185.67%	428,687	292,047	46.78%

International and Domestic Activity Summary

	Current Month			Accumulated Since the beginning of the year		
	September 2021	September 2020	Rate Of Change	2021	2020	Rate Of Change
Aircrafts	7,590	3,480	118.10%	49,853	43,696	14.09%
Passengers	785,959	195,523		4,135,250	4,175,591	-0.96%





Passengers and Aircrafts

Int'l Aviation Activity at Ben Gurion International Airport by Terminal

Terminal 3

	Current Month			Accumulated Since the beginning of the year		
	September 2021	September 2020	Rate of Change	2021	2020	Rate of Change
Incoming Aircrafts	3,378	1,543	118.92%	21,708	19,643	10.51%
Outgoing Aircrafts	3,424	1,561	119.34%	21,813	17,533	24.41%
Total Aircrafts	6,802	3,104	119.13%	43,521	37,176	17.06%
Incoming Passengers	346,188	71,651		1,789,092	1,928,455	-7.22%
Outgoing Passengers	364,090	105,227		1,866,285	1,658,653	12.51%
Transit Passengers	5			136	1,982	-93.13%
Total Passengers	710,278	176,878		3,655,377	3,587,108	1.90%

Terminal 1

	Current Month			Accumulated Since the beginning of the year		
	September 2021	September 2020	Rate of Change	2021	2020	Rate of Change
Incoming Aircrafts	120			342		
Outgoing Aircrafts	66			227	2,103	-89.20%
Total Aircrafts	186			569	2,103	-72.94%
Incoming Passengers	10,660			29,151		
Outgoing Passengers	11,757			22,035	296,436	-92.56%
Total Passengers	22,417			51,186	296,436	-82.73%





Passengers and Aircrafts

Int'l Aviation Activity at Ben Gurion International Airport by Flight Type

Schedule and Charter Flights

	Current Month			Accumulated Since the beginning of the year		
	September 2021	September 2020	Rate of Change	2021	2020	Rate of Change
Incoming Aircrafts	2,813	834		15,230	14,531	4.81%
Outgoing Aircrafts	2,823	833		15,326	14,672	4.45%
Total Aircrafts	5,636	1,667		30,556	29,203	4.63%
Incoming Passengers	355,672	70,325		1,807,265	1,922,082	-5.97%
Outgoing Passengers	374,668	103,339		1,877,541	1,947,801	-3.60%
Transit Passengers	5			133	1,982	-93.28%
Total Passengers	730,340	173,664		3,684,806	3,869,883	-4.78%

Private Flights

	Current Month			Accumulated Since the beginning of the year		
	September 2021	September 2020	Rate of Change	2021	2020	Rate of Change
Incoming Aircrafts	317	397	-20.15%	3,041	1,776	71.22%
Outgoing Aircrafts	309	411	-24.81%	2,996	1,785	67.84%
Total Aircrafts	626	808	-22.52%	6,037	3,561	69.53%
Incoming Passengers	987	1,072	-7.92%	9,449	4,632	103.99%
Outgoing Passengers	1,061	1,838	-42.27%	9,409	5,728	64.26%
Total Passengers	2,048	2,910	-29.62%	18,858	10,360	82.02%





Passengers and Aircrafts

Int'l Aviation Activity at Ben Gurion International Airport by Flight Type

Cargo Flights

	Current Month			Accumulated Since the beginning of the year		
	September 2021	September 2020	Rate of Change	2021	2020	Rate of Change
Incoming Aircrafts	352	302	16.55%	3,565	3,175	12.28%
Outgoing Aircrafts	342	307	11.40%	3,509	3,013	16.46%
Total Aircrafts	694	609	13.95%	7,074	6,188	14.31%
Incoming Passengers	7	14	-50.00%	111	234	-52.56%
Outgoing Passengers	27	21	28.57%	229	355	-35.49%
Total Passengers	34	35	-2.85%	340	589	-42.27%

Other Flights

	Current Month			Accumulated Since the beginning of the year		
	September 2021	September 2020	Rate of Change	2021	2020	Rate of Change
Incoming Aircrafts	16	10	60.00%	214	161	32.91%
Outgoing Aircrafts	16	10	60.00%	209	166	25.90%
Total Aircrafts	32	20	60.00%	423	327	29.35%
Incoming Passengers	182	240	-24.16%	1,418	1,507	-5.90%
Outgoing Passengers	91	29		1,141	1,205	-5.31%
Total Passengers	273	269	1.48%	2,559	2,712	-5.64%





Passengers and Aircrafts

Domestic Aviation Activity at Ben Gurion International Airport by Flight Type

Schedule Flights

	Current Month			Accumulated Since the beginning of the year		
	September 2021	September 2020	Rate of Change	2021	2020	Rate of Change
Aircrafts	566	248	128.22%	4,839	3,353	44.31%
Passengers	53,088	18,591	185.55%	427,480	291,452	46.67%

Private Flights

	Current Month			Accumulated Since the beginning of the year		
	September 2021	September 2020	Rate of Change	2021	2020	Rate of Change
Aircrafts	15	51	-70.58%	517	477	8.38%
Passengers	5	40	-87.50%	449	402	11.69%

Other Flights

	Current Month			Accumulated Since the beginning of the year		
	September 2021	September 2020	Rate of Change	2021	2020	Rate of Change
Aircrafts	21	77	-72.72%	407	587	-30.66%
Passengers	171	14		758	193	





International Activity

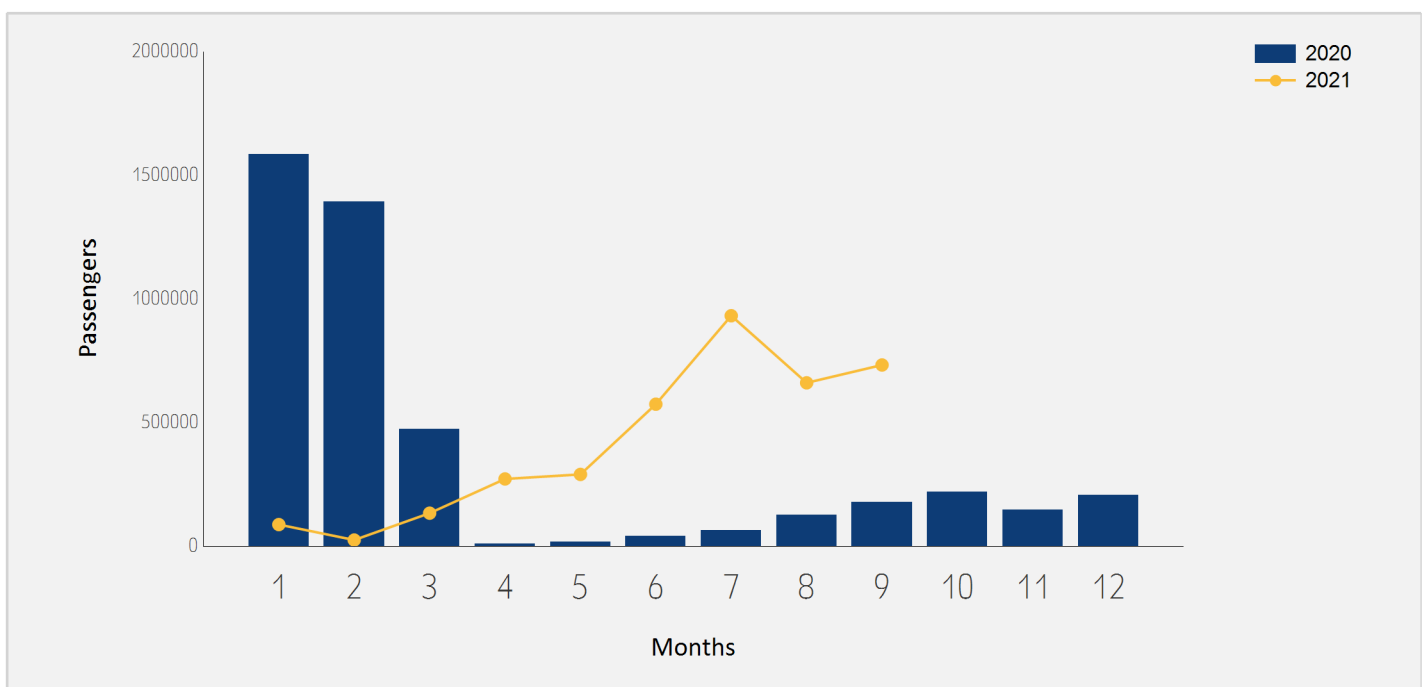




International Passenger Traffic

Distribution by Months

Months	2021	2020	Rate of Change
January	87,213	1,584,027	-94.49%
February	24,770	1,391,803	-98.22%
March	133,342	471,907	-71.74%
April	271,760	9,377	
May	290,102	18,225	
June	574,122	40,970	
July	932,019	64,002	
August	660,540	126,355	
September	732,695	176,878	
Total	3,706,563	3,883,544	-4.55%

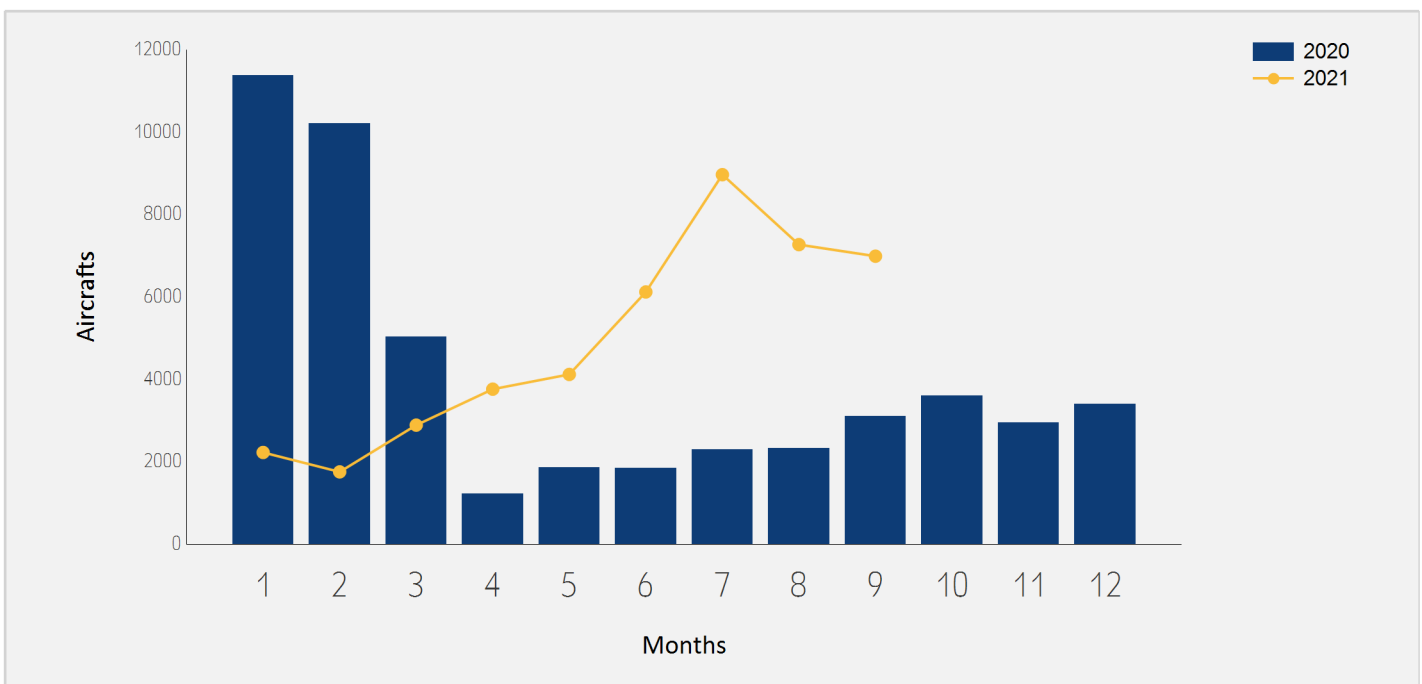




International Aircraft Traffic

Distribution by Months

Months	2021	2020	Rate of Change
January	2,225	11,374	-80.43%
February	1,753	10,207	-82.82%
March	2,888	5,038	-42.67%
April	3,761	1,225	
May	4,119	1,863	121.09%
June	6,120	1,849	
July	8,967	2,291	
August	7,269	2,328	
September	6,988	3,104	125.12%
Total	44,090	39,279	12.24%





International Passenger Traffic

Distribution by Airline for September

		September 2021		September 2020		
Airline		Passengers	Rate of Total	Passengers	Rate of Total	Rate of Change
LY	EL AL ISRAEL AIRLINES	144,500	19.72%	386	0.21%	
FR	RYANAIR	67,221	9.17%	8,597	4.86%	
6H	ISRAIR AIRLINES	40,734	5.55%	19,505	11.02%	108.83%
EZY	EASYJET	37,680	5.14%	3,698	2.09%	
IZ	ARKIA ISRAELI AIRLINES	36,808	5.02%	71	0.04%	
UA	UNITED AIRLINES	35,812	4.88%	18,678	10.55%	91.73%
W6	WIZZAIR	29,867	4.07%	8,567	4.84%	
PS	UKRAINE INTL AIR	29,274	3.99%	5,954	3.36%	
TK	TURKISH AIRLINES	25,957	3.54%	24,041	13.59%	7.96%
DL	DELTA AIRLINES	22,910	3.12%	6,700	3.78%	
BZ	BLUE BIRD AIRWAYS	20,708	2.82%	7,573	4.28%	173.44%
LH	LUFTHANSA	20,017	2.73%	8,010	4.52%	149.90%
A3	AEGEAN AIRLINES	17,918	2.44%	5,646	3.19%	
QS	SMARTWINGS	14,121	1.92%	79	0.04%	
AA	AMERICAN AIRLINES	13,341	1.82%			
FZ	FLYDUBAI	12,561	1.71%			
LX	SWISS INT'L AIRLINES	11,661	1.59%	2,235	1.26%	
OS	AUSTRIAN AIRLINES	11,355	1.54%	1,493	0.84%	
AF	AIR FRANCE	11,086	1.51%	10,094	5.70%	9.82%
AC	AIR CANADA	10,339	1.41%	3,196	1.80%	
BA	BRITISH AIRWAYS PLC	9,887	1.34%	3,910	2.21%	152.86%





International Passenger Traffic

Distribution by Airline for September

		September 2021		September 2020		
	Airline	Passengers	Rate of Total	Passengers	Rate of Total	Rate of Change
VS	VIRGIN ATLANTIC AIRWAYS	7,461	1.01%	1,474	0.83%	
SU	AEROFLOT RUSSIAN AIRLINES	6,713	0.91%	1,751	0.98%	
KL	K.L.M.	6,667	0.90%			
LO	LOT POLISH AIRLINES	6,419	0.87%			
U8	TUS AIRWAYS	5,545	0.75%			
ET	ETHIOPIAN AIRLINES	5,417	0.73%	1,547	0.87%	
A9	GEORGIAN AIRWAYS	5,027	0.68%			
TO	TRANSAVIA FRANCE	4,969	0.67%	2,690	1.52%	84.72%
AZ	ALITALIA	4,908	0.66%			
PC	PEGASUS AIRLINES	4,789	0.65%	12,742	7.20%	-62.41%
IB	IBERIA	4,437	0.60%			
B2	BELAVIA AIRLINE	4,023	0.54%	4,308	2.43%	-6.61%
9U	AIR MOLDOVA	3,497	0.47%	1,426	0.80%	145.23%
7W	WIND ROSE AVIATION Co. Lt	2,986	0.40%			
HM	AIR SEYCHELLES	2,963	0.40%			
RO	TAROM - RUMANIAN AIR TRAN	2,899	0.39%	513	0.29%	
SN	BRUSSELS AIRLINES	2,704	0.36%			
MJ	MYWAY AIRLINES	2,386	0.32%			
UX	AIR EUROPA Lineas Aereas	2,385	0.32%			
HV	TRANSAVIA	2,173	0.29%			
DY	NORWEGIAN AIR SHUTTLE ASA	2,092	0.28%			





International Passenger Traffic

Distribution by Airline for September

		September 2021		September 2020		
Airline		Passengers	Rate of Total	Passengers	Rate of Total	Rate of Change
PQ	SKYUP AIRLINES	1,666	0.22%	289	0.16%	
5F	FLYONE	1,626	0.22%			
J2	AZERBAIJAN AIRLINES	1,555	0.21%			
HY	UZBEKISTAN AIR	1,308	0.17%			
BT	AIR BALTIC	1,286	0.17%			
TP	AIR PORTUGAL	1,262	0.17%			
N4	NORD WIND	1,092	0.14%			
7B	BEEB AIRLINE	1,087	0.14%			
AY	FINNAIR	1,068	0.14%			
EY	ETIHAD AIRWAYS	942	0.12%			
NO	NEOS	767	0.10%			
AI	AIR INDIA	715	0.09%			
OB	BLUE AIR AVIATION	589	0.08%			
CX	CATHAY PACIFIC AIRWAYS	416	0.05%	125	0.07%	
RJ	ROYAL JORDANIAN	386	0.05%			
KLJ	KLASJET	156	0.02%			
AHS	AERO HANDLING	133	0.01%	221	0.12%	-39.81%
CY	CYPRUS AIRWAYS	127	0.01%			
GF	GULF AIR - BAHREIN	111	0.01%			
	OTHERS	2,186	0.29%	11,359	6.42%	-80.75%
	TOTAL	732,695		176,878		





Int'l Accumulated Passenger Traffic

Distribution by Airline

		Accumulated 2021		Accumulated 2020		
Airline		Passengers	Rate of Total	Passengers	Rate of Total	Rate of Change
LY	EL AL ISRAEL AIRLINES	903,598	24.37%	815,314	20.99%	10.82%
UA	UNITED AIRLINES	238,480	6.43%	216,626	5.57%	10.08%
FR	RYANAIR	229,957	6.20%	221,916	5.71%	3.62%
6H	ISRAIR AIRLINES	219,382	5.91%	130,238	3.35%	68.44%
TK	TURKISH AIRLINES	186,944	5.04%	249,358	6.42%	-25.02%
W6	WIZZAIR	177,049	4.77%	237,859	6.12%	-25.56%
IZ	ARKIA ISRAELI AIRLINES	145,552	3.92%	34,763	0.89%	
PS	UKRAINE INTL AIR	123,108	3.32%	94,906	2.44%	29.71%
PC	PEGASUS AIRLINES	121,429	3.27%	107,465	2.76%	12.99%
LH	LUFTHANSA	121,298	3.27%	122,264	3.14%	-0.79%
DL	DELTA AIRLINES	105,654	2.85%	61,642	1.58%	71.39%
EZY	EASYJET	104,275	2.81%	251,853	6.48%	-58.59%
A3	AEGEAN AIRLINES	80,337	2.16%	64,800	1.66%	23.97%
BZ	BLUE BIRD AIRWAYS	70,831	1.91%	16,211	0.41%	
AA	AMERICAN AIRLINES	60,731	1.63%			
FZ	FLYDUBAI	59,467	1.60%			
AF	AIR FRANCE	52,111	1.40%	75,258	1.93%	-30.75%
OS	AUSTRIAN AIRLINES	51,532	1.39%	46,671	1.20%	10.41%
LX	SWISS INT'L AIRLINES	50,943	1.37%	53,843	1.38%	-5.38%
KL	K.L.M.	37,300	1.00%	26,316	0.67%	41.73%
BA	BRITISH AIRWAYS PLC	36,578	0.98%	69,738	1.79%	-47.54%





Int'l Accumulated Passenger Traffic

Distribution by Airline

		Accumulated 2021		Accumulated 2020		
Airline		Passengers	Rate of Total	Passengers	Rate of Total	Rate of Change
AC	AIR CANADA	34,309	0.92%	36,568	0.94%	-6.17%
SU	AEROFLOT RUSSIAN AIRLINES	33,721	0.90%	117,746	3.03%	-71.36%
ET	ETHIOPIAN AIRLINES	32,806	0.88%	32,999	0.84%	-0.58%
QS	SMARTWINGS	32,771	0.88%	18,033	0.46%	81.72%
VS	VIRGIN ATLANTIC AIRWAYS	28,770	0.77%	26,720	0.68%	7.67%
TO	TRANSAVIA FRANCE	26,680	0.71%	65,607	1.68%	-59.33%
LO	LOT POLISH AIRLINES	22,556	0.60%	46,302	1.19%	-51.28%
A9	GEORGIAN AIRWAYS	21,916	0.59%	23,044	0.59%	-4.89%
9U	AIR MOLDOVA	20,863	0.56%	12,460	0.32%	67.43%
B2	BELAVIA AIRLINE	20,433	0.55%	23,442	0.60%	-12.83%
IB	IBERIA	17,620	0.47%	30,252	0.77%	-41.75%
RO	TAROM - RUMANIAN AIR TRAN	16,881	0.45%	18,596	0.47%	-9.22%
SN	BRUSSELS AIRLINES	13,642	0.36%	22,958	0.59%	-40.57%
TWI	TAILWIND AIRLINES	12,670	0.34%	12,203	0.31%	3.82%
FH	FREEBIRD AIRLINES	12,598	0.33%	7,343	0.18%	71.56%
FB	BULGARIA AIR	12,355	0.33%	16,094	0.41%	-23.23%
BUC	EUROPEAN AIR CHARTER	11,999	0.32%	1,371	0.03%	
XC	CORONDON AIRLINES	11,581	0.31%	7,134	0.18%	62.33%
UX	AIR EUROPA Lineas Aereas	10,913	0.29%			
U8	TUS AIRWAYS	9,815	0.26%			
AZ	ALITALIA	9,593	0.25%	55,578	1.43%	-82.73%





Int'l Accumulated Passenger Traffic

Distribution by Airline

		Accumulated 2021		Accumulated 2020		
Airline		Passengers	Rate of Total	Passengers	Rate of Total	Rate of Change
HM	AIR SEYCHELLES	8,287	0.22%	2,887	0.07%	187.04%
HV	TRANSAVIA	8,060	0.21%	32,925	0.84%	-75.52%
5F	FLYONE	6,825	0.18%	112		
EAF	ELECTRA AIRWAYS	6,820	0.18%	456	0.01%	
MJ	MYWAY AIRLINES	6,497	0.17%	7,166	0.18%	-9.33%
AI	AIR INDIA	5,079	0.13%	21,087	0.54%	-75.91%
J2	AZERBAIJAN AIRLINES	4,995	0.13%	3,518	0.09%	41.98%
BT	AIR BALTIC	4,914	0.13%	1,681	0.04%	192.32%
EY	ETIHAD AIRWAYS	4,888	0.13%			
HY	UZBEKISTAN AIR	3,926	0.10%	6,593	0.16%	-40.45%
OB	BLUE AIR AVIATION	3,606	0.09%	11,669	0.30%	-69.09%
AY	FINNAIR	3,316	0.08%	4,176	0.10%	-20.59%
DY	NORWEGIAN AIR SHUTTLE ASA	3,208	0.08%	5,905	0.15%	-45.67%
7W	WIND ROSE AVIATION Co. Lt	3,201	0.08%	114		
CY	CYPRUS AIRWAYS	2,790	0.07%	9,192	0.23%	-69.64%
N4	NORD WIND	2,627	0.07%			
PQ	SKYUP AIRLINES	2,561	0.06%	10,427	0.26%	-75.43%
NO	NEOS	2,277	0.06%			
CX	CATHAY PACIFIC AIRWAYS	1,567	0.04%	18,472	0.47%	-91.51%
TP	AIR PORTUGAL	1,262	0.03%	12,544	0.32%	-89.93%
7B	BEES AIRLINE	1,087	0.02%			





Int'l Accumulated Passenger Traffic

Distribution by Airline

		Accumulated 2021		Accumulated 2020		
Airline		Passengers	Rate of Total	Passengers	Rate of Total	Rate of Change
5W	WIZZ AIR ABU DHABI	1,041	0.02%			
ENT	ENTER AIR	967	0.02%	2,109	0.05%	-54.14%
RJ	ROYAL JORDANIAN	927	0.02%	27,392	0.70%	-96.61%
AHS	AERO HANDLING	876	0.02%	1,154	0.02%	-24.09%
VY	VUELING AIRLINES S.A.	876	0.02%	14,964	0.38%	-94.14%
JAV	JORDANIAN AVIATION	496	0.01%	2,029	0.05%	-75.55%
HU	HAINAN AIRLINES	440	0.01%	7,709	0.19%	-94.29%
ASY	ROYAL AUSTRALIAN AIR FORCE	293				
PVG	PRIVILEG STYLE	245		511	0.01%	-52.05%
TB	JET AIRFLY	200				
KLJ	KLASJET	156		54		188.88%
B0	DREAMJET	128				
UL	SRILANKA AIRLINES	119		168		-29.16%
GF	GULF AIR - BAHREIN	115				
X5	AIR EUROPA EXPRESS	109				
	OTHERS	20,734	0.55%	207,039	5.33%	-89.98%
	TOTAL	3,706,563		3,883,544		-4.55%





International Passenger Traffic

Distribution by Israeli Airlines for September

		September 2021		September 2020		
Airlines		Passengers	Rate of Total	Passengers	Rate of Total	Rate of Change
LY	EL AL ISRAEL AIRLINES	144,500	19.72%	386	0.21%	
6H	ISRAIR AIRLINES	40,734	5.55%	19,505	11.02%	108.83%
IZ	ARKIA ISRAELI AIRLINES	36,808	5.02%	71	0.04%	
	OTHERS	509	0.06%	578	0.32%	-11.93%
TOTAL		222,551	30.37%	20,540	11.61%	

Int'l Accumulated Passenger Traffic

Distribution by Israeli Airlines

		Accumulated 2021		Accumulated 2020		
Airlines		Passengers	Rate of Total	Passengers	Rate of Total	Rate of Change
LY	EL AL ISRAEL AIRLINES	903,598	24.37%	815,314	20.99%	10.82%
6H	ISRAIR AIRLINES	219,382	5.91%	130,238	3.35%	68.44%
IZ	ARKIA ISRAELI AIRLINES	145,552	3.92%	34,763	0.89%	
	OTHERS	4,934	0.13%	2,254	0.05%	118.89%
TOTAL		1,273,466	34.35%	982,569	25.30%	29.60%





International Passenger Traffic

Distribution by Countries for September

Countries	September 2021		September 2020		Rate of Change
	Passengers	Rate of Total	Passengers	Total of Rate	
UNITED STATES	104,454	14.25%	25,909	14.64%	
GREECE	79,786	10.88%	23,059	13.03%	
UKRAINE	59,553	8.12%	6,404	3.62%	
FRANCE	40,615	5.54%	13,221	7.47%	
AUSTRIA	36,122	4.93%	3,440	1.94%	
UNITED KINGDOM	33,874	4.62%	11,287	6.38%	
GERMANY	33,832	4.61%	9,027	5.10%	
ITALY	32,909	4.49%	2,205	1.24%	
HUNGARY	32,145	4.38%	549	0.31%	
CZECH REPUBLIC	30,884	4.21%	53	0.02%	
TURKEY	30,756	4.19%	37,372	21.12%	-17.70%
ROMANIA	20,783	2.83%	573	0.32%	
GEORGIA	20,444	2.79%	597	0.33%	
CYPRUS	19,929	2.71%	1,005	0.56%	
SWITZERLAND	19,010	2.59%	2,239	1.26%	
UNITED ARAB EMIRATES	17,049	2.32%	222	0.12%	
POLAND	16,023	2.18%			
RUSSIAN FEDERATION	15,983	2.18%	2,273	1.28%	
SPAIN	12,900	1.76%	381	0.21%	
NETHERLANDS	12,299	1.67%	14		
CANADA	11,578	1.58%	3,196	1.80%	
MOLDOVA	5,519	0.75%	1,426	0.80%	





International Passenger Traffic

Distribution by Countries for September

Countries	September 2021		September 2020		
	Passengers	Rate of Total	Passengers	Total of Rate	Rate of Change
ETHIOPIA	5,417	0.73%	1,547	0.87%	
MONTENEGRO	4,728	0.64%	45	0.02%	
BELGIUM	4,307	0.58%	141	0.07%	
BELARUS	4,027	0.54%	4,476	2.53%	-10.03%
SEYCHELLES	3,561	0.48%			
THAILAND	2,612	0.35%	616	0.34%	
SLOVAKIA	2,540	0.34%	79	0.04%	
DENMARK	2,185	0.29%	4		
AZERBAIJAN	2,178	0.29%	37	0.02%	
PORTUGAL	2,090	0.28%	35	0.01%	
LITHUANIA	2,079	0.28%	127	0.07%	
BULGARIA	1,365	0.18%	18,738	10.59%	-92.71%
UZBEKISTAN	1,308	0.17%	137	0.07%	
LATVIA	1,286	0.17%	5		
MOROCCO	1,214	0.16%			
FINLAND	1,068	0.14%			
CHINA	787	0.10%	273	0.15%	188.27%
TANZANIA	732	0.09%			
INDIA	715	0.09%			
SERBIA	475	0.06%	698	0.39%	-31.94%
JORDAN	401	0.05%	581	0.32%	-30.98%
ALBANIA	282	0.03%	86	0.04%	





International Passenger Traffic

Distribution by Countries for September

Countries	September 2021		September 2020		
	Passengers	Rate of Total	Passengers	Total of Rate	Rate of Change
BAHRAIN	236	0.03%	34	0.01%	
EGYPT	208	0.02%	199	0.11%	4.52%
MALDIVES	168	0.02%			
KAZAKHSTAN	112	0.01%	149	0.08%	-24.83%
OTHERS	167	0.02%	4,419	2.49%	-96.22%
TOTAL	732,695		176,878		





Int'l Accumulated Passenger Traffic

Distribution by Countries

Countries	Accumulated 2021		Accumulated 2020		
	Passengers	Rate of Total	Passengers	Rate of Total	Rate of Change
UNITED STATES	672,152	18.13%	447,682	11.52%	50.14%
GREECE	413,326	11.15%	117,438	3.02%	
TURKEY	346,435	9.34%	395,316	10.17%	-12.36%
FRANCE	222,406	6.00%	277,162	7.13%	-19.75%
GERMANY	201,962	5.44%	268,950	6.92%	-24.90%
UKRAINE	199,488	5.38%	130,916	3.37%	52.37%
UNITED KINGDOM	148,368	4.00%	260,008	6.69%	-42.93%
GEORGIA	144,773	3.90%	60,201	1.55%	140.48%
CYPRUS	123,221	3.32%	77,444	1.99%	59.10%
AUSTRIA	123,221	3.32%	113,706	2.92%	8.36%
UNITED ARAB EMIRATES	121,011	3.26%	310		
ITALY	100,745	2.71%	180,171	4.63%	-44.08%
SWITZERLAND	87,179	2.35%	115,621	2.97%	-24.59%
ROMANIA	85,668	2.31%	119,578	3.07%	-28.35%
BULGARIA	80,494	2.17%	99,205	2.55%	-18.86%
HUNGARY	70,643	1.90%	98,882	2.54%	-28.55%
NETHERLANDS	70,037	1.88%	105,771	2.72%	-33.78%
RUSSIAN FEDERATION	63,781	1.72%	197,277	5.07%	-67.66%
CZECH REPUBLIC	59,257	1.59%	46,864	1.20%	26.44%
POLAND	45,958	1.23%	130,400	3.35%	-64.75%
SPAIN	44,016	1.18%	151,979	3.91%	-71.03%
CANADA	37,192	1.00%	50,043	1.28%	-25.67%





Int'l Accumulated Passenger Traffic

Distribution by Countries

Countries	Accumulated 2021		Accumulated 2020		
	Passengers	Rate of Total	Passengers	Rate of Total	Rate of Change
ETHIOPIA	33,069	0.89%	33,349	0.85%	-0.83%
MOLDOVA	29,039	0.78%	14,159	0.36%	105.09%
BELGIUM	25,570	0.68%	46,397	1.19%	-44.88%
BELARUS	20,665	0.55%	23,630	0.60%	-12.54%
MONTENEGRO	20,308	0.54%	99		
SEYCHELLES	17,198	0.46%	3,979	0.10%	
THAILAND	14,588	0.39%	41,888	1.07%	-65.17%
SERBIA	8,998	0.24%	9,688	0.24%	-7.12%
CHINA	7,253	0.19%	41,318	1.06%	-82.44%
PORTUGAL	7,178	0.19%	19,644	0.50%	-63.45%
INDIA	6,227	0.16%	40,822	1.05%	-84.74%
LITHUANIA	6,149	0.16%	14,996	0.38%	-58.99%
AZERBAIJAN	6,110	0.16%	8,861	0.22%	-31.04%
LATVIA	4,923	0.13%	1,818	0.04%	170.79%
UZBEKISTAN	4,364	0.11%	7,170	0.18%	-39.13%
TANZANIA	4,158	0.11%	3,606	0.09%	15.30%
FINLAND	3,327	0.08%	11,342	0.29%	-70.66%
ICELAND	3,311	0.08%	33		
DENMARK	3,138	0.08%	7,313	0.18%	-57.09%
ALBANIA	2,948	0.07%	184		
SLOVAKIA	2,832	0.07%	618	0.01%	
JORDAN	2,698	0.07%	30,565	0.78%	-91.17%





Int'l Accumulated Passenger Traffic

Distribution by Countries

Countries	Accumulated 2021		Accumulated 2020		
	Passengers	Rate of Total	Passengers	Rate of Total	Rate of Change
MOROCCO	2,685	0.07%	2		
SLOVENIA	2,334	0.06%	29		
EGYPT	1,208	0.03%	10,292	0.26%	-88.26%
CROATIA	618	0.01%	6,483	0.16%	-90.46%
KAZAKHSTAN	581	0.01%	263		120.91%
MEXICO	572	0.01%	273		109.52%
SWEDEN	475	0.01%	5,915	0.15%	-91.96%
BAHRAIN	356		34		
EQUATORIAL GUINEA	235				
PANAMA	200		177		12.99%
GHANA	197		34		
IRELAND	185		293		-36.86%
FAROEISLANDS	184				
MALDIVES	181				
BRAZIL	134		15,433	0.39%	-99.13%
SOUTH AFRICA	109		12,876	0.33%	-99.15%
GIBRALTAR	105		16		
OTHERS	820	0.02%	25,021	0.64%	-96.72%
TOTAL	3,706,563		3,883,544		-4.55%





International Passenger Traffic

Distribution by First Destination for September

Destination	September 2021		September 2020		
	Passengers	Rate of Total	Passengers	Rate of Total	Rate of Change
KIEV KYIV-BORISPOL	49,120	6.70%	4,913	2.77%	
NEW YORK - J.F.KENNEDY	46,897	6.40%	6,713	3.79%	
VIENNA	35,179	4.80%	3,311	1.87%	
BUDAPEST	32,145	4.38%	549	0.31%	
NEW YORK - NEWARK	31,275	4.26%	14,762	8.34%	111.86%
ATHENS	31,148	4.25%	10,879	6.15%	186.31%
PRAGUE-RUZYNE	30,862	4.21%	53	0.02%	
PARIS-CHARLES DE GAULLE	30,080	4.10%	10,513	5.94%	186.12%
LONDON - HEATHROW	24,784	3.38%	5,504	3.11%	
ISTANBUL	23,851	3.25%	14,883	8.41%	60.25%
BUCHAREST - OTOPENI	17,301	2.36%	573	0.32%	
RHODES-PARADISI	16,606	2.26%	3,374	1.90%	
DUBAI	15,982	2.18%	23	0.01%	
HERAKLION	14,122	1.92%	4,905	2.77%	187.91%
ROME - FIUMICINO	14,057	1.91%	682	0.38%	
FRANKFURT	13,927	1.90%	8,011	4.52%	73.84%
ZURICH	13,758	1.87%	2,239	1.26%	
LARNACA	12,850	1.75%	752	0.42%	
AMSTERDAM	12,208	1.66%	8		
WARSAW	12,175	1.66%			
BATUMI	11,963	1.63%			
MILAN-MALPENSA	10,141	1.38%	141	0.07%	





International Passenger Traffic

Distribution by First Destination for September

Destination	September 2021		September 2020		
	Passengers	Rate of Total	Passengers	Rate of Total	Rate of Change
BERLIN BRANDENBURG INTL	9,882	1.34%			
TORONTO	9,006	1.22%	3,196	1.80%	181.78%
SAN FRANCISCO	8,540	1.16%	2,524	1.42%	
TBILISI	8,481	1.15%	597	0.33%	
MIAMI INTERNATIONAL	8,251	1.12%			
MOSCOW-DOMODEDOVO	8,116	1.10%	403	0.22%	
PAPHOS	7,079	0.96%	253	0.14%	
ISTANBUL-SABIHA GOKCHEN	6,900	0.94%	18,116	10.24%	-61.91%
MADRID	6,826	0.93%	368	0.20%	
MOSCOW	6,713	0.91%	1,751	0.98%	
LUTON	6,399	0.87%	5,583	3.15%	14.61%
MUNICH	6,311	0.86%	9		
BARCELONA	6,037	0.82%	5		
LOS ANGELES	5,778	0.78%			
CHISINAU	5,519	0.75%	1,426	0.80%	
ADDIS ABABA	5,417	0.73%	1,547	0.87%	
THESSALONIKI	5,369	0.73%	2,922	1.65%	83.74%
PARIS-ORLY	4,969	0.67%	2,613	1.47%	90.16%
KHANIA-SOUDABAY	4,919	0.67%			
ODESA	4,868	0.66%	803	0.45%	
TIVAT	4,728	0.64%	45	0.02%	
BERGAMO	4,424	0.60%	1,334	0.75%	





International Passenger Traffic

Distribution by First Destination for September

Destination	September 2021		September 2020		
	Passengers	Rate of Total	Passengers	Rate of Total	Rate of Change
BRUSSELS	4,292	0.58%			
MINSK	4,027	0.54%	4,390	2.48%	-8.26%
KRAKOW	3,846	0.52%			
MAHE SEYCHELLES INTL	3,561	0.48%			
CHICAGO - O'HARE	3,543	0.48%	1,607	0.90%	120.47%
CORFU	3,510	0.47%	656	0.37%	
GENEVA	3,082	0.42%			
MANCHESTER	2,665	0.36%			
MONTREAL - DORVAL	2,572	0.35%			
BRATISLAVA	2,540	0.34%	79	0.04%	
PHUKET	2,489	0.33%			
KHARKOV	2,253	0.30%	313	0.17%	
COPENHAGEN KASTRUP	2,185	0.29%			
LVOV	2,183	0.29%	109	0.06%	
BAKU HEYDAR ALIYEV INT'L	2,178	0.29%	37	0.02%	
NICE	2,160	0.29%	9		
BASEL	2,118	0.28%			
BADEN BADEN	2,110	0.28%			
SANTORINI	2,093	0.28%	6		
LISBON	2,080	0.28%	2		
VILNIUS INTL	2,079	0.28%	127	0.07%	
TREVISO	2,044	0.27%			





International Passenger Traffic

Distribution by First Destination for September

Destination	September 2021		September 2020		
	Passengers	Rate of Total	Passengers	Rate of Total	Rate of Change
CLUJ NAPOCA	1,995	0.27%			
LYON - SATOLAS	1,705	0.23%	77	0.04%	
MARSEILLE	1,666	0.22%			
MEMMINGEN	1,587	0.21%	165	0.09%	
IASI	1,487	0.20%			
SOFIA	1,365	0.18%	7,951	4.49%	-82.83%
NAPLES-CAPODICHINO	1,328	0.18%	8		
TASHKENT	1,308	0.17%	137	0.07%	
RIGA	1,286	0.17%	5		
MARRAKESH	1,214	0.16%			
MIKONOS	1,162	0.15%	156	0.08%	
KIEV-ZHULYANY	1,127	0.15%			
ST. PETERSBURG	1,092	0.14%	1		
HELSINKI	1,068	0.14%			
ABU DHABI	942	0.12%	99	0.05%	
SALZBURG	889	0.12%	129	0.07%	
PREVEZA	773	0.10%	89	0.05%	
VILLAFRANCA-VERONA	728	0.09%	5		
DELHI	715	0.09%			
BELGRADE	475	0.06%	698	0.39%	-31.94%
HONG KONG INT'L	418	0.05%	125	0.07%	
ZANZIBAR	415	0.05%			





International Passenger Traffic

Distribution by First Destination for September

Destination	September 2021		September 2020		
	Passengers	Rate of Total	Passengers	Rate of Total	Rate of Change
AMMAN (QUEEN ALIA INT'L)	388	0.05%	505	0.28%	-23.16%
SHANGHAI PUDONG	369	0.05%	1		
KILIMANJARO	317	0.04%			
TIRANA	282	0.03%	86	0.04%	
BAHRAIN	236	0.03%	34	0.01%	
MALE INT'L	168	0.02%			
BANGKOK INTL.-SUARNABHUM	123	0.01%	297	0.16%	-58.58%
HOUSTON INTERCONTINENTAL	122	0.01%	104	0.05%	17.30%
ALMATY	112	0.01%	149	0.08%	-24.83%
SHARM EL SHEIKH	103	0.01%	150	0.08%	-31.33%
CATANIA FONTANAROSSA	100	0.01%	2		
AL BATEEN EXECUTIVE AP	100	0.01%			
OTHERS	957	0.13%	22,287	12.60%	-95.70%
TOTAL	732,695		176,878		





Int'l Accumulated Passenger Traffic

Distribution by First Destination

Destination	Accumulated 2021		Accumulated 2020		Rate of Change
	Passengers	Rate of Total	Passengers	Rate of Total	
NEW YORK - J.F.KENNEDY	272,967	7.36%	123,980	3.19%	120.17%
NEW YORK - NEWARK	228,146	6.15%	204,338	5.26%	11.65%
PARIS-CHARLES DE GAULLE	172,366	4.65%	161,449	4.15%	6.76%
KIEV KYIV-BORISPOL	166,251	4.48%	95,958	2.47%	73.25%
ISTANBUL	140,418	3.78%	223,491	5.75%	-37.17%
ATHENS	132,774	3.58%	92,010	2.36%	44.30%
ISTANBUL-SABIHA GOKCHEN	128,915	3.47%	126,489	3.25%	1.91%
LONDON - HEATHROW	123,984	3.34%	142,980	3.68%	-13.28%
VIENNA	122,057	3.29%	110,835	2.85%	10.12%
FRANKFURT	117,704	3.17%	102,309	2.63%	15.04%
DUBAI	113,704	3.06%	23		
HERAKLION	83,472	2.25%	5,344	0.13%	
BATUMI	82,333	2.22%	17,352	0.44%	
RHODES-PARADISI	81,335	2.19%	3,432	0.08%	
BUCHAREST - OTOPENI	75,988	2.05%	99,517	2.56%	-23.64%
LARNACA	72,417	1.95%	42,082	1.08%	72.08%
BUDAPEST	70,643	1.90%	92,678	2.38%	-23.77%
AMSTERDAM	69,911	1.88%	98,464	2.53%	-28.99%
ANTALYA	66,657	1.79%	43,796	1.12%	52.19%
ZURICH	64,465	1.73%	73,118	1.88%	-11.83%
TBILISI	62,439	1.68%	42,849	1.10%	45.71%
PRAGUE-RUZYNE	59,117	1.59%	46,839	1.20%	26.21%





Int'l Accumulated Passenger Traffic

Distribution by First Destination

Destination	Accumulated 2021		Accumulated 2020		
	Passengers	Rate of Total	Passengers	Rate of Total	Rate of Change
MIAMI INTERNATIONAL	56,168	1.51%	19,144	0.49%	193.39%
SAN FRANCISCO	51,180	1.38%	50,471	1.29%	1.40%
PAPHOS	50,804	1.37%	35,332	0.90%	43.79%
SOFIA	42,002	1.13%	75,185	1.93%	-44.13%
ROME - FIUMICINO	41,446	1.11%	103,758	2.67%	-60.05%
LOS ANGELES	41,370	1.11%	15,708	0.40%	163.36%
BERLIN BRANDENBURG INTL	39,575	1.06%			
MOSCOW	33,731	0.91%	117,590	3.02%	-71.31%
WARSAW	33,081	0.89%	65,474	1.68%	-49.47%
ADDIS ABABA	33,069	0.89%	33,349	0.85%	-0.83%
TORONTO	31,866	0.85%	49,923	1.28%	-36.16%
THESSALONIKI	30,471	0.82%	15,176	0.39%	100.78%
MADRID	29,941	0.80%	98,880	2.54%	-69.71%
MUNICH	29,287	0.79%	55,572	1.43%	-47.29%
CHISINAU	29,039	0.78%	14,159	0.36%	105.09%
MILAN-MALPENSA	26,877	0.72%	39,283	1.01%	-31.58%
MOSCOW-DOMODEDOVO	26,753	0.72%	16,103	0.41%	66.13%
PARIS-ORLY	26,605	0.71%	58,880	1.51%	-54.81%
BRUSSELS	25,257	0.68%	32,784	0.84%	-22.95%
CORFU	23,804	0.64%	765	0.01%	
MINSK	20,665	0.55%	23,544	0.60%	-12.22%
CHICAGO - O'HARE	20,599	0.55%	1,613	0.04%	





Int'l Accumulated Passenger Traffic

Distribution by First Destination

Destination	Accumulated 2021		Accumulated 2020		
	Passengers	Rate of Total	Passengers	Rate of Total	Rate of Change
MIKONOS	20,521	0.55%	285		
TIVAT	20,036	0.54%	66		
BURGAS	19,769	0.53%	5,457	0.14%	
LUTON	18,783	0.50%	87,069	2.24%	-78.42%
VARNA	18,619	0.50%	16,551	0.42%	12.49%
MAHE SEYCHELLES INTL	17,198	0.46%	3,979	0.10%	
ODESA	17,062	0.46%	15,105	0.38%	12.95%
BERGAMO	16,286	0.43%	12,448	0.32%	30.83%
GENEVA	14,265	0.38%	31,175	0.80%	-54.24%
BARCELONA	13,626	0.36%	50,665	1.30%	-73.10%
KHANIA-SOUDABAY	13,408	0.36%	11		
SANTORINI	12,468	0.33%	22		
KRAKOW	11,759	0.31%	29,790	0.76%	-60.52%
NICE	10,968	0.29%	6,822	0.17%	60.77%
ZAKYNTHOS	9,526	0.25%			
DALAMAN	9,449	0.25%	1,400	0.03%	
BELGRADE	8,998	0.24%	9,688	0.24%	-7.12%
BADEN BADEN	8,276	0.22%	6,967	0.17%	18.78%
BASEL	8,252	0.22%	11,261	0.28%	-26.72%
TREVISO	8,109	0.21%			
KHARKOV	7,892	0.21%	5,715	0.14%	38.09%
BANGKOK INTL.-SUARNABHUM	7,771	0.20%	41,569	1.07%	-81.30%





Int'l Accumulated Passenger Traffic

Distribution by First Destination

Destination	Accumulated 2021		Accumulated 2020		Rate of Change
	Passengers	Rate of Total	Passengers	Rate of Total	
LISBON	7,086	0.19%	19,597	0.50%	-63.84%
LVOV	6,990	0.18%	4,893	0.12%	42.85%
PHUKET	6,817	0.18%			
MEMMINGEN	6,732	0.18%	6,430	0.16%	4.69%
CLUJ NAPOCA	6,526	0.17%	5,612	0.14%	16.28%
MARSEILLE	6,426	0.17%	15,410	0.39%	-58.29%
VILNIUS INTL	6,093	0.16%	14,357	0.36%	-57.56%
ABU DHABI	6,091	0.16%	187		
BAKU HEYDAR ALIYEV INT'L	6,044	0.16%	8,857	0.22%	-31.76%
LYON - SATOLAS	5,587	0.15%	14,317	0.36%	-60.97%
DELHI	5,435	0.14%	21,382	0.55%	-74.58%
MONTREAL - DORVAL	5,278	0.14%	5		
MANCHESTER	5,164	0.13%	13,254	0.34%	-61.03%
RIGA	4,923	0.13%	1,818	0.04%	170.79%
SHANGHAI PUDONG	4,718	0.12%	7		
TASHKENT	4,364	0.11%	7,157	0.18%	-39.02%
PREVEZA	3,738	0.10%	97		
HELSINKI	3,327	0.08%	4,176	0.10%	-20.33%
REYKJAVIK	3,302	0.08%	33		
ZANZIBAR	3,069	0.08%	3,321	0.08%	-7.58%
IASI	3,034	0.08%	6,477	0.16%	-53.15%
TIRANA	2,948	0.07%	184		





Int'l Accumulated Passenger Traffic

Distribution by First Destination

Destination	Accumulated 2021		Accumulated 2020		
	Passengers	Rate of Total	Passengers	Rate of Total	Rate of Change
COPENHAGEN KASTRUP	2,907	0.07%	7,307	0.18%	-60.21%
ST. PETERSBURG	2,782	0.07%	19,055	0.49%	-85.40%
BRATISLAVA	2,699	0.07%	128		
CATANIA FONTANAROSSA	2,675	0.07%	31		
MARRAKESH	2,476	0.06%			
LJUBLJANA	2,334	0.06%	29		
AMMAN (QUEEN ALIA INT'L)	2,303	0.06%	30,221	0.77%	-92.37%
VILLAFRANCA-VERONA	2,125	0.05%	275		
HONG KONG INT'L	2,095	0.05%	28,128	0.72%	-92.55%
NAPLES-CAPODICHINO	1,418	0.03%	5,359	0.13%	-73.53%
KIEV-ZHULYANY	1,202	0.03%	11		
HOUSTON INTERCONTINENTAL	1,145	0.03%	645	0.01%	77.51%
SALZBURG	1,106	0.02%	2,857	0.07%	-61.28%
KILIMANJARO	1,051	0.02%	285		
BARI -PALESE MACCHIE	935	0.02%	22		
KOS	929	0.02%	34		
BODRUM	699	0.01%	88		
AL BATEEN EXECUTIVE AP	656	0.01%			
DUBAI AL MAKTOUM INT AP	537	0.01%	100		
CANCUN- MEXICO	532	0.01%			
SHARM EL SHEIKH	530	0.01%	255		107.84%
CAIRO INTERNATIONAL	509	0.01%	8,185	0.21%	-93.78%





Int'l Accumulated Passenger Traffic

Distribution by First Destination

Destination	Accumulated 2021		Accumulated 2020		Rate of Change
	Passengers	Rate of Total	Passengers	Rate of Total	
RZESZOW-JASIONKA	508	0.01%	1,118	0.02%	-54.56%
MUMBAI	473	0.01%	12,894	0.33%	-96.33%
STOCKHOLM-ARLANDA	469	0.01%	5,909	0.15%	-92.06%
ALMATY	431	0.01%	256		68.35%
KATOWICE	391	0.01%	10,523	0.27%	-96.28%
MOSCOW-VNUKOVO	388	0.01%	562	0.01%	-30.96%
BAHRAIN	356		34		
SKIATHOS	335		13		
BANGALORE	319				
LIEGE	309		367		-15.80%
BERLIN -SCHOENEFELD	280		46,042	1.18%	-99.39%
PODGORICA	272		33		
BEIJING	254		8,697	0.22%	-97.07%
ZAGREB	249		3,200	0.08%	-92.21%
ANDREWS	232		384		-39.58%
BILLUND	230		4		
WROCLAW	212		3,538	0.09%	-94.00%
BATA AIRPORT	210				
PANAMA CITY	200		177		12.99%
ACCRA-KOTOKA	197		34		
CHENGDU	186		2,551	0.06%	-92.70%
VAGAR AIRPORT	184				





Int'l Accumulated Passenger Traffic

Distribution by First Destination

Destination	Accumulated 2021		Accumulated 2020		
	Passengers	Rate of Total	Passengers	Rate of Total	Rate of Change
MALE INT'L	181				
SHANNON	178		227		-21.58%
ANKARA-ESENBUGA	161		42		
SAMOS	143		5		
CASABLANCA-MOHAMMED V	141		2		
ASTANA	137				
SAO PAULO (GUARULHOS INT')	134		15,433	0.39%	-99.13%
LILLE-LESQUINN	120				
ROTTERDAM	117		21		
KALAMATA	110		10		
ZADAR	108		32		
HURGHADA	107				
GIBRALTAR	105		16		
JOHANNESBURG	105		12,876	0.33%	-99.18%
PLOVDIV	104		2,012	0.05%	-94.83%
OTHERS	5,896	0.15%	297,875	7.67%	-98.02%
TOTAL	3,706,563		3,883,544		-4.55%



Cargo Activity





Cargo Handling

Distribution by Transporter

Transporter	September 2021 (Ton)	September 2020 (Ton)	Rate of Change
Cargo on Passenger Aircrafts - Incoming	5,400	2,227	142.47%
Cargo on Passenger Aircrafts - Outgoing	4,852	2,083	132.93%
Total Cargo on Passenger Aircrafts	10,251	4,310	137.84%
Cargo on Cargo Aircrafts - Incoming	12,811	12,543	2.13%
Cargo on Cargo Aircrafts - Outgoing	5,895	6,714	-12.19%
Total Cargo on Cargo Aircrafts	18,706	19,256	-2.85%
Total	28,957	23,566	22.87%

Distribution by Months

Month	2021 (ton)			2020 (ton)			Rate of Change
	Cargo	Mail	Total	Cargo	Mail	Total	
January	28,571	632	29,203	28,568	1,395	29,964	-2.53%
February	26,508	322	26,830	28,188	1,033	29,221	-8.18%
March	31,394	548	31,942	26,511	535	27,047	18.09%
April	28,779	745	29,524	20,673	116	20,790	42.01%
May	29,512	544	30,056	26,974	112	27,086	10.96%
June	30,843	586	31,429	24,918	216	25,134	25.04%
July	30,360	726	31,086	23,733	331	24,065	29.17%
August	33,558	582	34,139	24,252	465	24,718	38.11%
September	28,339	618	28,957	23,039	526	23,566	22.87%
Total	267,864	5,303	273,166	226,856	4,729	231,591	17.95%





Cargo Handling on Passenger Aircrafts

Distribution by Airline for September

September 2021					September 2020				
Airline	Incoming Cargo (Ton)	Outgoing Cargo (Ton)	Cargo (Ton)	Rate of Total	Incoming Cargo (Ton)	Outgoing Cargo (Ton)	Cargo (Ton)	Rate of Total	Rate of Change
LY EL AL ISRAEL AIRLINES	913	1,261	2,174	21.20%	1	1	2	0.04%	
UA UNITED AIRLINES	763	1,218	1,982	19.33%	609	843	1,452	33.68%	36.50%
TK TURKISH AIRLINES	891	133	1,024	9.98%	443	109	552	12.80%	85.50%
DL DELTA AIRLINES	329	369	697	6.79%	205	305	510	11.83%	36.66%
LX SWISS INT'L AIRLINES	412	183	595	5.80%	221	160	381	8.83%	56.16%
AA AMERICAN AIRLINES	147	417	564	5.50%					
AF AIR FRANCE	373	169	542	5.28%	7	25	33	0.76%	
BA BRITISH AIRWAYS PLC	235	222	457	4.45%	188	109	298	6.91%	53.35%
AC AIR CANADA	207	238	445	4.34%	105	197	302	7.00%	47.35%
VS VIRGIN ATLANTIC AIRWAYS	323	115	439	4.28%	138	101	238	5.52%	84.45%
ET ETHIOPIAN AIRLINES	177	108	285	2.78%	106	64	170	3.94%	67.64%
IB IBERIA	88	64	151	1.47%					
EY ETIHAD AIRWAYS	79	67	147	1.43%					
CX CATHAY PACIFIC AIRWAYS	99	31	131	1.27%	24		24	0.55%	
PC PEGASUS AIRLINES	58	40	98	0.95%	37	43	80	1.85%	22.50%
SU AEROFLOT RUSSIAN AIRLINES	16	63	80	0.78%	67	54	121	2.80%	-33.88%
FZ FLYDUBAI	68	6	73	0.71%					
AI AIR INDIA	34	35	69	0.67%					
LH LUFTHANSA	40	18	58	0.56%	18	8	26	0.60%	123.07%
PS UKRAINE INTL AIR	40	3	43	0.41%	23	4	27	0.62%	59.25%
A3 AEGEAN AIRLINES	13	18	31	0.30%	7	6	12	0.27%	158.33%
OS AUSTRIAN AIRLINES	13	10	24	0.23%	7		7	0.16%	





Cargo Handling on Passenger Aircrafts

Distribution by Airline for September

		September 2021				September 2020				
Airline		Incoming Cargo (Ton)	Outgoing Cargo (Ton)	Cargo (Ton)	Rate of Total	Incoming Cargo (Ton)	Outgoing Cargo (Ton)	Cargo (Ton)	Rate of Total	Rate of Change
LO	LOT POLISH AIRLINES	17	1	17	0.16%					
KL	K.L.M.	2	15	17	0.16%					
QS	SMARTWINGS	12	3	15	0.14%					
AZ	ALITALIA	1	12	13	0.12%					
RO	TAROM - RUMANIAN AIR TRAN	8	4	12	0.11%					
6H	ISRAIR AIRLINES	11		11	0.10%	10	10	20	0.46%	-45.00%
HY	UZBEKISTAN AIR	1	9	10	0.09%					
BT	AIR BALTIC	6	1	7	0.06%					
B2	BELAVIA AIRLINE	4	3	7	0.06%	9	8	17	0.39%	-58.82%
UX	AIR EUROPA Lineas Aereas	4	2	6	0.05%					
	OTHERS	14	15	29	0.28%	3	36	39	0.90%	-25.64%
	TOTAL	5,400	4,852	10,251		2,227	2,083	4,310		137.84%





Accumulated Cargo Handling on Passengers Aircrafts

Distribution by Airline

		Accumulated 2021				Accumulated 2020				
Airline		Incoming Cargo (Ton)	Outgoing Cargo (Ton)	Cargo (Ton)	Rate of Total	Incoming Cargo (Ton)	Outgoing Cargo (Ton)	Cargo (Ton)	Rate of Total	Rate of Change
LY	EL AL ISRAEL AIRLINES	7,356	10,074	17,430	26.46%	6,955	6,269	13,224	24.24%	31.80%
UA	UNITED AIRLINES	4,648	7,674	12,322	18.70%	5,596	7,046	12,642	23.17%	-2.53%
TK	TURKISH AIRLINES	4,341	712	5,053	7.67%	3,241	976	4,217	7.73%	19.82%
DL	DELTA AIRLINES	2,535	2,514	5,049	7.66%	1,217	1,184	2,401	4.40%	110.28%
LX	SWISS INT'L AIRLINES	2,153	1,201	3,354	5.09%	2,255	1,343	3,598	6.59%	-6.78%
AA	AMERICAN AIRLINES	1,076	1,876	2,952	4.48%					
AF	AIR FRANCE	1,843	918	2,762	4.19%	56	107	163	0.29%	
ET	ETHIOPIAN AIRLINES	1,662	1,031	2,693	4.08%	544	338	883	1.61%	
VS	VIRGIN ATLANTIC AIRWAYS	1,575	896	2,471	3.75%	723	544	1,268	2.32%	94.87%
AC	AIR CANADA	963	1,295	2,258	3.42%	1,340	1,544	2,884	5.28%	-21.70%
BA	BRITISH AIRWAYS PLC	1,030	1,047	2,078	3.15%	1,403	851	2,253	4.13%	-7.76%
IB	IBERIA	944	457	1,401	2.12%	709	218	927	1.69%	51.13%
EY	ETIHAD AIRWAYS	580	558	1,139	1.72%					
SU	AEROFLOT RUSSIAN AIRLINES	368	676	1,044	1.58%	1,715	1,595	3,310	6.06%	-68.45%
PC	PEGASUS AIRLINES	510	292	802	1.21%	245	187	432	0.79%	85.64%
CX	CATHAY PACIFIC AIRWAYS	470	193	664	1.00%	540	400	939	1.72%	-29.28%
AI	AIR INDIA	224	209	433	0.65%	477	262	738	1.35%	-41.32%
FZ	FLYDUBAI	323	54	377	0.57%					
PS	UKRAINE INTL AIR	235	66	301	0.45%	139	98	237	0.43%	27.00%
LH	LUFTHANSA	200	82	283	0.42%	238	182	419	0.76%	-32.45%
A3	AEGEAN AIRLINES	88	42	130	0.19%	51	77	128	0.23%	1.56%
UX	AIR EUROPA Lineas Aereas	54	62	116	0.17%					





Accumulated Cargo Handling on Passengers Aircrafts

Distribution by Airline

		Accumulated 2021				Accumulated 2020				
Airline		Incoming Cargo (Ton)	Outgoing Cargo (Ton)	Cargo (Ton)	Rate of Total	Incoming Cargo (Ton)	Outgoing Cargo (Ton)	Cargo (Ton)	Rate of Total	Rate of Change
LO	LOT POLISH AIRLINES	76	8	84	0.12%	65	22	87	0.15%	-3.44%
OS	AUSTRIAN AIRLINES	55	26	81	0.12%	39	21	60	0.11%	35.00%
RO	TAROM - RUMANIAN AIR TRAN	50	21	71	0.10%	37	27	65	0.11%	9.23%
6H	ISRAIR AIRLINES	24	34	59	0.08%	53	137	190	0.34%	-68.94%
B2	BELAVIA AIRLINE	29	29	58	0.08%	51	63	114	0.20%	-49.12%
KL	K.L.M.	10	32	43	0.06%	9	11	20	0.03%	115.00%
HY	UZBEKISTAN AIR	20	21	41	0.06%	71	68	139	0.25%	-70.50%
QS	SMARTWINGS	27	10	37	0.05%	65	34	98	0.17%	-62.24%
AZ	ALITALIA	7	25	33	0.05%	73	126	199	0.36%	-83.41%
BT	AIR BALTIC	24	9	33	0.05%	2	3	5		
	OTHERS	147	68	215	0.32%	2,029	869	2,898	5.31%	-92.58%
	TOTAL	33,649	32,218	65,866		29,937	24,600	54,539		20.76%





Cargo Handling on Cargo Aircrafts

Distribution by Airlines September

		September 2021				September 2020				
Airline		Incoming Cargo (Ton)	Outgoing Cargo (Ton)	Cargo (Ton)	Rate of Total	Incoming Cargo (Ton)	Outgoing Cargo (Ton)	Cargo (Ton)	Rate of Total	Rate of Change
ICL	C.A.L ISRAELI CARGO	2,364	1,336	3,699	19.77%	727	92	819	4.25%	
LY	EL AL ISRAEL AIRLINES	2,005	988	2,993	16.00%	1,706	933	2,639	13.70%	13.41%
TK	TURKISH AIRLINES	1,591	248	1,839	9.83%	1,648	501	2,149	11.16%	-14.42%
QY	EUROPEAN AIR TRANSPORT	1,083	635	1,718	9.18%	1,054	782	1,836	9.53%	-6.42%
MNB	MNG CARGO AIRLINES	1,176	185	1,361	7.27%	1,084	252	1,336	6.93%	1.87%
RSB	RUBY STAR	848	71	919	4.91%					
AZG	SILK WAY WEST AIRLINES	373	529	902	4.82%	697	788	1,485	7.71%	-39.25%
LH	LUFTHANSA	439	410	849	4.53%	655	466	1,122	5.82%	-24.33%
EY	ETIHAD AIRWAYS	443	342	785	4.19%					
FX	FEDERAL EXPRESS	518	257	775	4.14%	493	328	821	4.26%	-5.60%
AJT	AMERIJET INTERNATIONAL	381	388	769	4.11%					
CX	CATHAY PACIFIC AIRWAYS	428	195	623	3.33%	330	250	580	3.01%	7.41%
3V	ASL AIRLINES BELGIUM	238	145	383	2.04%	329	177	506	2.62%	-24.30%
VN	VIETNAM AIRLINES	294	3	297	1.58%					
3U	SICHUAN AIRLINES	143	72	215	1.14%	380	131	511	2.65%	-57.92%
ABD	ATLANTA ICELANDIC	170	25	196	1.04%					
ET	ETHIOPIAN AIRLINES	57	33	90	0.48%					
PVG	PRIVILEG STYLE	75		75	0.40%					
IB	IBERIA	45	13	58	0.31%					
PLM	WAMOS AIR	54		54	0.28%					
MLT	MALETH - AERO	37		37	0.19%					
M4	POSTE AIR CARGO	28	6	33	0.17%					





Cargo Handling on Cargo Aircrafts

Distribution by Airlines September

		September 2021				September 2020				
Airline	Incoming Cargo (Ton)	Outgoing Cargo (Ton)	Cargo (Ton)	Rate of Total	Incoming Cargo (Ton)	Outgoing Cargo (Ton)	Cargo (Ton)	Rate of Total	Rate of Change	
BA BRITISH AIRWAYS PLC	17		17	0.09%	219	145	364	1.89%	-95.32%	
OTHERS	5	14	19	0.10%	3,221	1,867	5,088	26.42%	-99.62%	
TOTAL	12,811	5,895	18,706		12,543	6,714	19,256		-2.85%	





Accumulated Cargo Handling on Cargo Aircrafts

Distribution by Airline

		Accumulated 2021				Accumulated 2020				
Airline		Incoming Cargo (Ton)	Outgoing Cargo (Ton)	Cargo (Ton)	Rate of Total	Incoming Cargo (Ton)	Outgoing Cargo (Ton)	Cargo (Ton)	Rate of Total	Rate of Change
ICL	C.A.L ISRAELI CARGO	30,569	16,641	47,210	22.77%	13,165	8,073	21,239	11.99%	122.27%
LY	EL AL ISRAEL AIRLINES	22,696	13,477	36,173	17.44%	21,937	13,193	35,130	19.84%	2.96%
TK	TURKISH AIRLINES	21,059	4,703	25,762	12.42%	13,698	4,377	18,075	10.20%	42.52%
QY	EUROPEAN AIR TRANSPORT	10,429	7,287	17,717	8.54%	8,680	6,064	14,744	8.32%	20.16%
MN B	MNG CARGO AIRLINES	11,598	2,170	13,768	6.64%	8,633	2,314	10,947	6.18%	25.76%
AZG	SILK WAY WEST AIRLINES	5,954	6,781	12,735	6.14%	6,853	6,235	13,089	7.39%	-2.70%
LH	LUFTHANSA	5,523	4,093	9,616	4.63%	5,638	4,373	10,012	5.65%	-3.95%
FX	FEDERAL EXPRESS	4,589	3,050	7,639	3.68%	3,972	2,894	6,866	3.87%	11.25%
CX	CATHAY PACIFIC AIRWAYS	3,033	1,991	5,023	2.42%	1,164	746	1,910	1.07%	162.98%
3V	ASL AIRLINES BELGIUM	2,395	1,446	3,842	1.85%	2,800	1,632	4,432	2.50%	-13.31%
EY	ETIHAD AIRWAYS	1,208	1,388	2,596	1.25%	8		8		
RSB	RUBY STAR	2,117	220	2,337	1.12%					
ET	ETHIOPIAN AIRLINES	1,022	561	1,583	0.76%	158	70	228	0.12%	
BA	BRITISH AIRWAYS PLC	656	832	1,489	0.71%	1,758	1,693	3,451	1.94%	-56.85%
3U	SICHUAN AIRLINES	918	360	1,278	0.61%	2,589	563	3,152	1.78%	-59.45%
IB	IBERIA	874	331	1,204	0.58%					
AJT	AMERIJET INTERNATIONAL	552	481	1,033	0.49%					
ABD	ATLANTA ICELANDIC	586	306	892	0.43%	246	66	312	0.17%	185.89%
VN	VIETNAM AIRLINES	642	6	648	0.31%					
M4	POSTE AIR CARGO	373	148	520	0.25%					
PLM	WAMOS AIR	285		285	0.13%					
PVG	PRIVILEG STYLE	97		97	0.04%					





Accumulated Cargo Handling on Cargo Aircrafts

Distribution by Airline

		Accumulated 2021				Accumulated 2020				
Airline		Incoming Cargo (Ton)	Outgoing Cargo (Ton)	Cargo (Ton)	Rate of Total	Incoming Cargo (Ton)	Outgoing Cargo (Ton)	Cargo (Ton)	Rate of Total	Rate of Change
MLT MALETH - AERO		37		37	0.01%					
OTHERS		8,865	4,951	13,816	6.66%	19,674	13,784	33,458	18.89%	-58.70%
TOTAL		136,077	71,222	207,300		110,974	66,077	177,052		17.08%





Cargo Handling on Cargo Aircrafts

Distribution by Countries for September

Country	September 2021				September 2020				
	Incoming Cargo (Ton)	Outgoing Cargo (Ton)	Cargo (Ton)	Rate of Total	Incoming Cargo (Ton)	Outgoing Cargo (Ton)	Cargo (Ton)	Rate of Total	Rate of Change
BELGIUM	3,258	2,693	5,950	31.80%	3,487	2,709	6,196	32.17%	-3.97%
GERMANY	2,367	645	3,012	16.10%	2,590	1,333	3,923	20.37%	-23.22%
TURKEY	2,093	433	2,526	13.50%	1,978	807	2,785	14.46%	-9.29%
CHINA	1,971	465	2,436	13.02%	1,156	405	1,561	8.10%	56.05%
UNITED ARAB EMIRATES	613	375	989	5.28%					
AZERBAIJAN	373	529	903	4.82%	698	790	1,488	7.72%	-39.31%
NORWAY	798		798	4.26%	822		822	4.26%	-2.91%
EGYPT		410	410	2.19%					
CYPRUS	318	85	403	2.15%	718	82	800	4.15%	-49.62%
INDIA	314	63	376	2.01%	32	12	44	0.22%	
VIETNAM	294	3	297	1.58%					
FRANCE	79	135	214	1.14%	74	220	294	1.52%	-27.21%
SPAIN	173	13	186	0.99%	190		190	0.98%	-2.10%
ETHIOPIA	57	33	90	0.48%		3	3	0.01%	
SOUTH KOREA	53		53	0.28%					
ITALY	31	11	42	0.22%	2	5	7	0.03%	
UNITED KINGDOM	17	2	18	0.09%	264	174	437	2.26%	-95.88%
OTHERS	2	2	3	0.01%	531	175	706	3.66%	-99.57%
TOTAL	12,811	5,895	18,706		12,543	6,714	19,256		-2.85%





Accumulated Cargo Handling on Cargo Aircrafts

Distribution by Countries

Countries	Accumulated 2021				Accumulated 2020				
	Incoming Cargo (Ton)	Outgoing Cargo (Ton)	Cargo (Ton)	Rate of Total	Incoming Cargo (Ton)	Outgoing Cargo (Ton)	Cargo (Ton)	Rate of Total	Rate of Change
BELGIUM	33,066	30,227	63,293	30.53%	27,974	28,953	56,927	32.15%	11.18%
TURKEY	28,311	7,044	35,355	17.05%	17,856	7,722	25,578	14.44%	38.22%
GERMANY	22,681	8,351	31,031	14.96%	22,051	10,990	33,041	18.66%	-6.08%
CHINA	22,203	5,337	27,539	13.28%	10,960	1,793	12,753	7.20%	115.94%
AZERBAIJAN	5,955	6,713	12,669	6.11%	6,812	6,310	13,122	7.41%	-3.45%
NORWAY	8,243	51	8,294	4.00%	8,082		8,082	4.56%	2.62%
CYPRUS	3,063	666	3,729	1.79%	6,055	403	6,458	3.64%	-42.25%
UNITED ARAB EMIRATES	1,833	1,624	3,457	1.66%	24		24	0.01%	
EGYPT		3,132	3,132	1.51%	8	51	59	0.03%	
FRANCE	900	1,876	2,776	1.33%	1,111	1,554	2,665	1.50%	4.16%
UNITED KINGDOM	1,269	1,350	2,619	1.26%	2,743	2,583	5,326	3.00%	-50.82%
SPAIN	1,581	337	1,918	0.92%	1,341	439	1,780	1.00%	7.75%
ETHIOPIA	1,022	561	1,583	0.76%	158	74	232	0.13%	
INDIA	644	200	844	0.40%	207	166	374	0.21%	125.66%
ITALY	563	241	803	0.38%	368	106	474	0.26%	69.40%
VIETNAM	642	5	647	0.31%					
SOUTH KOREA	130	292	422	0.20%	114	178	291	0.16%	45.01%
OTHERS	3,972	3,215	7,187	3.46%	5,110	4,756	9,866	5.57%	-27.15%
TOTAL	136,077	71,222	207,300		110,974	66,077	177,052		17.08%



Domestic Activity

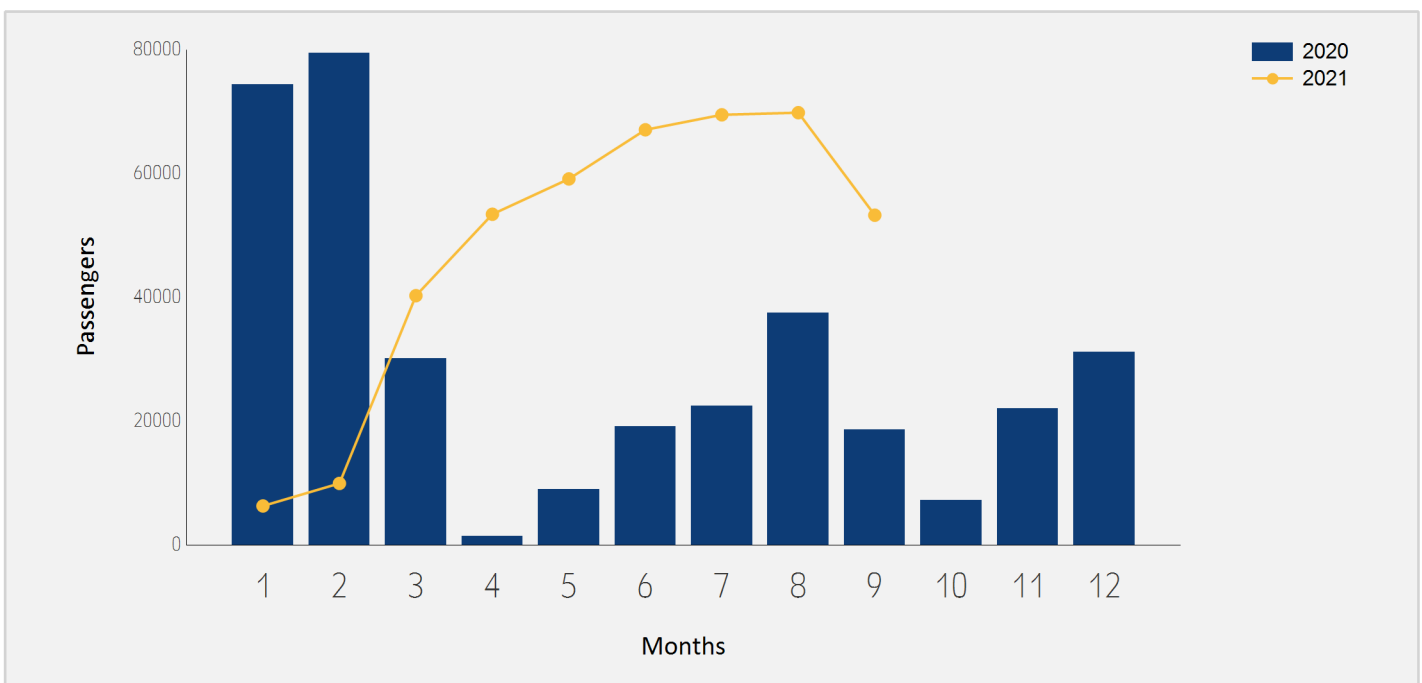




Domestic Passenger Traffic

Distribution by Months

Month	2021	2020	Rate of Change
January	6,294	74,380	-91.53%
February	9,936	79,475	-87.49%
March	40,263	30,137	33.59%
April	53,421	1,412	
May	59,126	8,989	
June	67,065	19,115	
July	69,490	22,417	
August	69,828	37,477	86.32%
September	53,264	18,645	185.67%
Total	428,687	292,047	46.78%

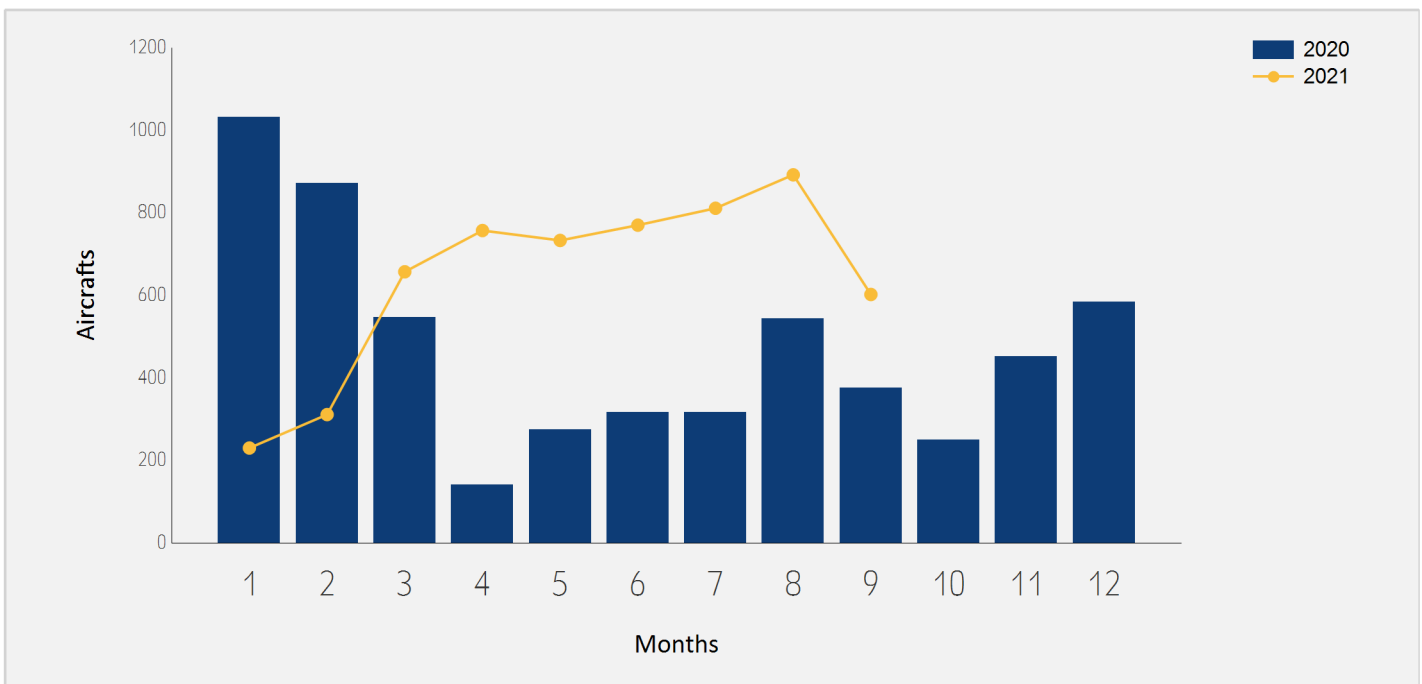




Domestic Aircrafts Traffic

Distribution by Months

Month	2021	2020	Rate of Change
January	230	1,032	-77.71%
February	311	871	-64.29%
March	657	547	20.10%
April	757	141	
May	733	274	167.51%
June	770	317	142.90%
July	811	316	156.64%
August	892	543	64.27%
September	602	376	60.10%
Total	5,763	4,417	30.47%





Domestic Passengers Traffic

Distribution by Airlines for September

		September 2021		September 2020		
Airline		Passengers	Rate of Total	Passengers	Rate of Total	Rate of Change
IZ	ARKIA ISRAELI AIRLINES	32,030	60.13%			
6H	ISRAIR AIRLINES	21,058	39.53%	18,591	99.71%	13.26%
	OTHERS	176	0.33%	54	0.28%	
	TOTAL	53,264		18,645		185.67%

Accumulated Domestic Passengers Traffic

Distribution by Airlines

		Accumulated 2021		Accumulated 2020		
Airline		Passengers	Rate of Total	Passengers	Rate of Total	Rate of Change
IZ	ARKIA ISRAELI AIRLINES	242,845	56.64%	141,463	48.43%	71.66%
6H	ISRAIR AIRLINES	185,140	43.18%	150,142	51.41%	23.30%
	OTHERS	702	0.16%	442	0.15%	58.82%
	TOTAL	428,687		292,047		46.78%





Domestic Passenger Traffic

Distribution by Destinations for September

Destination	September 2021		September 2020		
	Passengers	Rate of Total	Passengers	Rate of Total	Rate of Change
RAMON	53,090	99.67%	18,581	99.65%	185.72%
OTHERS	174	0.32%	64	0.34%	171.87%
TOTAL	53,264		18,645		185.67%

Accumulated Domestic Passenger Traffic

Distribution by Destinations

Destination	Accumulated 2021		Accumulated 2020		
	Passengers	Rate of Total	Passengers	Rate of Total	Rate of Change
RAMON	427,875	99.81%	290,626	99.51%	47.22%
OTHERS	812	0.18%	1,421	0.48%	-42.85%
TOTAL	428,687		292,047		46.78%

