



# Annual Report

## Ben Gurion International Airport

Year 2024



# Israel Airport Authority

## Ben Gurion International Airport

### Produced by the Industry & Management Department

**This report is protected by copyright and is the exclusive property of the Israel Airports Authority.**

**It must be emphasized that the data in the report are based on the reports of the airlines, and received under their responsibility.**

**The information is intended for personal use, and therefore may not be quoted or passed on to any third party without written permission from the Israel Airports Authority.**

**In addition, no commercial use may be made of this report.**

**Edit Yehoshua**

Activity Coordinator

Tel. +972-3-9752017

Email: [edity@iaa.gov.il](mailto:edity@iaa.gov.il)

**Rachel Lehava**

Manager, Industrial & Management Dep.

Tel. +972-3-9752019

Email: [rachelle@iaa.gov.il](mailto:rachelle@iaa.gov.il)

**Dimitry Shumacher**

Head, Industrial & Management Dep.

Tel. +972-3-9752661

Email: [dimitrysh@iaa.gov.il](mailto:dimitrysh@iaa.gov.il)



Greetings,

The year 2024 was defined largely by uncertainty and posed a challenging and complex period for all of us.

The ongoing war and security events persisted throughout the year, posing unprecedented challenges for the airport, including flight cancellations and schedule disruptions.

Despite these obstacles, we successfully ensured the airport's continued operation while maintaining high standards of service, safety, and security.

Since the beginning of the year and as the months progressed, we observed a surge in passenger traffic and the gradual return of airlines. Record activity levels were observed at Ben Gurion Airport in July, with 1,771,105 international passengers and nearly 50 airlines in operation. Israeli airlines continued to operate steadfastly during this challenging period, with the three airlines accounting for approximately 65% of all activity at Ben Gurion Airport in 2024.

Several foreign airlines, including Flydubai, Blue Bird Airways, and TUS Airways, maintained near-continuous operations throughout the year, collectively making up about 10% of total airport activity.

More recently, we have seen a gradual return of additional airlines, such as Wizz Air, LOT Polish Airlines, Air Europa, and Aegean Airlines. These carriers have started to resume operations, with more airlines expressing interest in returning soon.

Looking ahead, 2025 presents another set of challenges for Ben Gurion Airport, its operational partners, airlines, and concessionaires.

We are already preparing for the "day after" with cautious optimism, striving to deliver the highest level of service to passengers. These efforts will run alongside terminal development projects that will shape the airport's future in the coming years.

Together, we will continue operating with professionalism, dedication, and determination in 2025, aiming to enhance service quality while ensuring the utmost safety and security.

With heartfelt hopes for the return of the hostages and the recovery of the injured.

Sincerely yours,  
**Udi Bar Oz**  
Managing Director,  
Ben-Gurion International Airport





Dear friends and partners,

I hereby respectfully submit for your review a report summarizing the aviation activity at Ben - Gurion International Airport in 2024.

During the year, a total of 14,532,608 passengers on 108,563 international and domestic flights passed through Ben- Gurion Airport.

International passenger traffic in 2024 totaled 13,879,671 passengers, representing a decrease of 34.19% compared to 2023.

International aircraft traffic totaled 102,186 flights, representing a decrease of 29.46% compared to 2023.

International passenger traffic at Terminal 3 this year totaled 13,163,530 passengers, representing a decrease of -29% compared to 2023. Departing passengers on Terminal 1 International flights this year totaled 716,141 flights, representing a decrease of -70% compared to 2023.

On domestic flights 652,937 passengers passed through Ben- Gurion Airport this year, compared with 794,479 in 2023, a decrease of 17.81%.

During the year cargo weighing a total 347,707 tons as handled, representing a decrease of 1.17 % compared with to 2023.

Israeli airlines carried 9,137,371 passengers in 2024, 65.83% of all travelers passing through Ben - Gurion Airport, an increase of 25.29% relative to the previous year.

The airlines which contributed the most to the increase of passenger traffic this year are: EL AL ISRAEL AIRLINES, ISRAIR AIRLINES and ARKIA ISRAELI AIRLINES.

The Destination with the highest volume of activity was ATHENS, with a total of 973,630 passengers to and from, an increase of 23.41% compared to the previous year.

The country with the highest volume of activity was GREECE, with 1,825,567 passengers, constituting 13.15% of all activity.

The countries with the highest volume of activity this month are: GREECE, UNITED STATES and CYPRUS.

Below you will find additional tables providing details about movements of aircraft, passengers and cargo at Ben - Gurion International Airport.

\*The Data is displayed according to actual UTC time.

Sincerely yours,

**Udi Bar Oz**

Managing Director,  
Ben-Gurion International Airport



# Content



## Aviation Activity

Aviation Activity Summary	1
International Activity Summary	2 - 4
Domestic Activity Summary	5



## International Activity

Distribution By Months	7 - 8
Distribution By Airlines	9 - 12
Distribution By Countries	13 - 15
Distribution By First Destination	16 - 21



## Cargo Activity

Distribution by Transporter	23
Distribution By Months	23
Distribution By Airlines	24 - 27
Distribution By Countries	28 - 30



## Domestic Activity

Distribution By Months	32 - 33
Distribution By Airlines	34





# Passengers and Aircrafts

## Aviation Activity at Ben Gurion International Airport

### International Activity

Accumulated Since the beginning of the year			
	2024	2023	Rate Of Change
Incoming Aircrafts	51,092	72,402	-29.43%
Outgoing Aircrafts	51,094	72,468	-29.49%
<b>Total Aircrafts</b>	<b>102,186</b>	<b>144,870</b>	<b>-29.46%</b>
Incoming Passengers	6,921,028	10,521,518	-34.22%
Outgoing Passengers	6,958,643	10,570,233	-34.16%
Transit Passengers	2,539	2,994	-15.19%
<b>Total Passengers</b>	<b>13,879,671</b>	<b>21,091,751</b>	<b>-34.19%</b>

### Domestic Activity

Accumulated Since the beginning of the year			
	2024	2023	Rate Of Change
Aircrafts	6,377	7,542	-15.44%
Passengers	652,937	794,479	-17.81%

### International and Domestic Activity Summary

Accumulated Since the beginning of the year			
	2024	2023	Rate Of Change
Aircrafts	108,563	152,412	-28.77%
Passengers	14,532,608	21,886,230	-33.59%





# Passengers and Aircrafts

## Int'l Aviation Activity at Ben Gurion International Airport by Terminal

### Terminal 3

	Accumulated Since the beginning of the year		
	2024	2023	Rate of Change
Incoming Aircrafts	51,092	72,402	-29.43%
Outgoing Aircrafts	46,909	58,254	-19.47%
<b>Total Aircrafts</b>	<b>98,001</b>	<b>130,656</b>	<b>-24.99%</b>
Incoming Passengers	6,921,028	10,521,518	-34.22%
Outgoing Passengers	6,242,502	8,139,292	-23.30%
Transit Passengers	2,539	2,994	-15.19%
<b>Total Passengers</b>	<b>13,163,530</b>	<b>18,660,810</b>	<b>-29.45%</b>

### Terminal 1

	Accumulated Since the beginning of the year		
	2024	2023	Rate of Change
Incoming Aircrafts			
Outgoing Aircrafts	4,185	14,214	-70.55%
<b>Total Aircrafts</b>	<b>4,185</b>	<b>14,214</b>	<b>-70.55%</b>
Incoming Passengers			
Outgoing Passengers	716,141	2,430,941	-70.54%
<b>Total Passengers</b>	<b>716,141</b>	<b>2,430,941</b>	<b>-70.54%</b>





# Passengers and Aircrafts

## Int'l Aviation Activity at Ben Gurion International Airport by Flight Type

### Schedule and Charter Flights

	Accumulated Since the beginning of the year		
	2024	2023	Rate of Change
Incoming Aircrafts	42,656	64,744	-34.11%
Outgoing Aircrafts	42,991	64,903	-33.76%
<b>Total Aircrafts</b>	<b>85,647</b>	<b>129,647</b>	<b>-33.93%</b>
Incoming Passengers	6,907,532	10,504,007	-34.23%
Outgoing Passengers	6,945,030	10,553,706	-34.19%
Transit Passengers	2,539	2,994	-15.19%
<b>Total Passengers</b>	<b>13,852,562</b>	<b>21,057,713</b>	<b>-34.21%</b>

### Private Flights

	Accumulated Since the beginning of the year		
	2024	2023	Rate of Change
Incoming Aircrafts	3,547	3,904	-9.14%
Outgoing Aircrafts	3,545	3,921	-9.58%
<b>Total Aircrafts</b>	<b>7,092</b>	<b>7,825</b>	<b>-9.36%</b>
Incoming Passengers	10,796	12,525	-13.80%
Outgoing Passengers	10,794	12,662	-14.75%
<b>Total Passengers</b>	<b>21,590</b>	<b>25,187</b>	<b>-14.28%</b>







# Passengers and Aircrafts

## Int'l Aviation Activity at Ben Gurion International Airport by Flight Type

### Cargo Flights

	Accumulated Since the beginning of the year		
	2024	2023	Rate of Change
Incoming Aircrafts	4,389	3,268	34.30%
Outgoing Aircrafts	4,025	3,188	26.25%
<b>Total Aircrafts</b>	<b>8,414</b>	<b>6,456</b>	<b>30.32%</b>
Incoming Passengers	362	182	98.90%
Outgoing Passengers	424	267	58.80%
<b>Total Passengers</b>	<b>786</b>	<b>449</b>	<b>75.05%</b>

### Other Flights

	Accumulated Since the beginning of the year		
	2024	2023	Rate of Change
Incoming Aircrafts	500	486	2.88%
Outgoing Aircrafts	533	456	16.88%
<b>Total Aircrafts</b>	<b>1,033</b>	<b>942</b>	<b>9.66%</b>
Incoming Passengers	2,338	4,804	-51.33%
Outgoing Passengers	2,395	3,598	-33.43%
<b>Total Passengers</b>	<b>4,733</b>	<b>8,402</b>	<b>-43.66%</b>





# Passengers and Aircrafts

## Domestic Aviation Activity at Ben Gurion International Airport by Flight Type

### Schedule Flights

	Accumulated Since the begining of the year		
	2024	2023	Rate of Change
Aircrafts	5,349	6,628	-19.29%
Passengers	650,691	791,299	-17.76%

### Private Flights

	Accumulated Since the begining of the year		
	2024	2023	Rate of Change
Aircrafts	345	258	33.72%
Passengers	293	235	24.68%

### Other Flights

	Accumulated Since the begining of the year		
	2024	2023	Rate of Change
Aircrafts	683	656	4.11%
Passengers	1,953	2,945	-33.68%



# International Activity

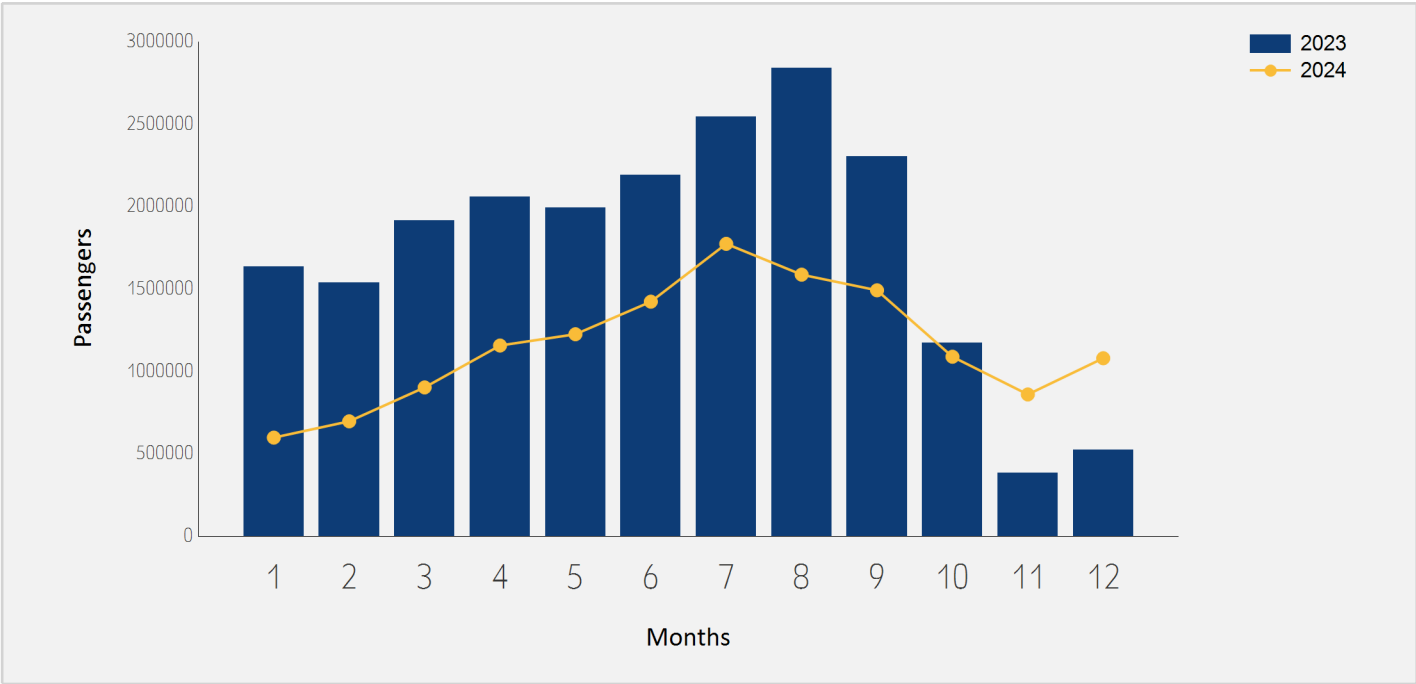




# International Passenger Traffic

## Distribution by Months

Months	2024	2023	Rate of Change
January	597,840	1,633,165	-63.39%
February	696,681	1,537,871	-54.69%
March	902,252	1,913,725	-52.85%
April	1,156,566	2,058,608	-43.81%
May	1,224,965	1,993,164	-38.54%
June	1,422,380	2,191,869	-35.10%
July	1,773,493	2,544,809	-30.30%
August	1,586,470	2,838,037	-44.09%
September	1,491,519	2,302,328	-35.21%
October	1,088,388	1,172,164	-7.14%
November	859,606	382,034	125.00%
December	1,079,511	523,977	106.02%
Total	13,879,671	21,091,751	-34.19%

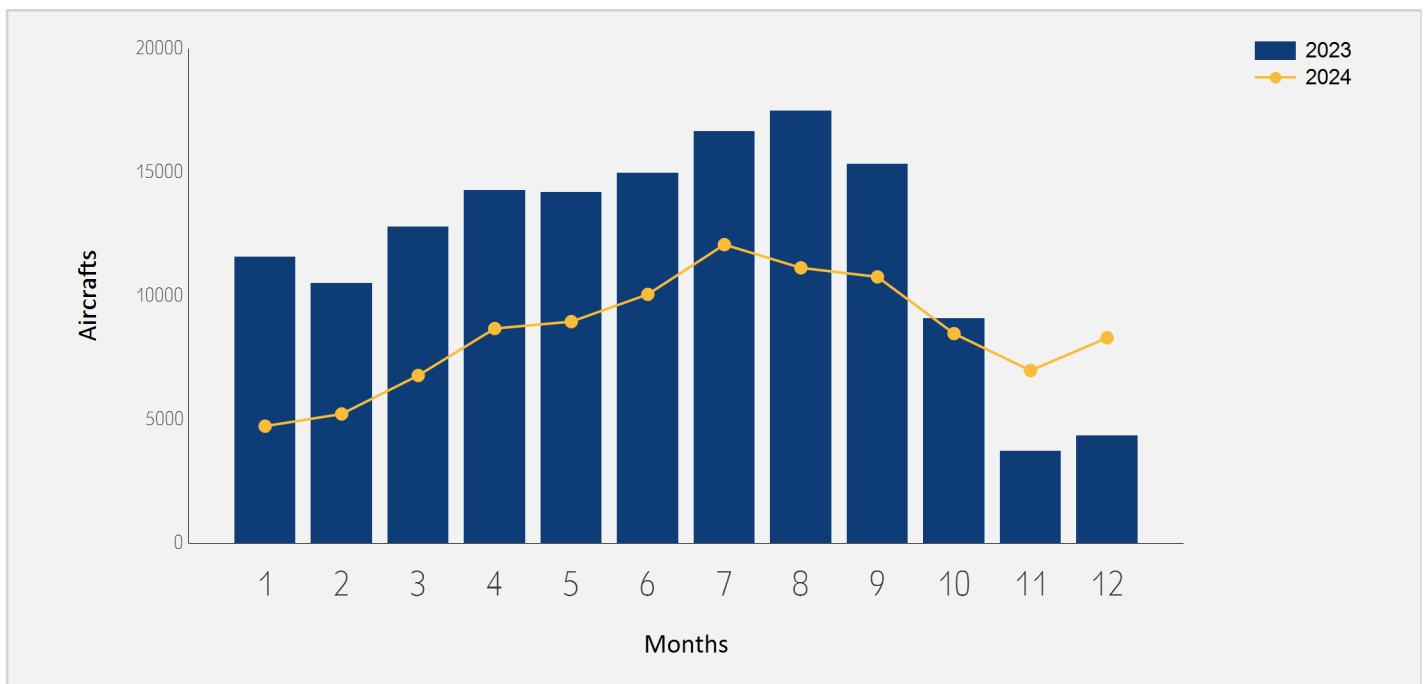




# International Aircraft Traffic

## Distribution by Months

Months	2024	2023	Rate of Change
January	4,732	11,574	-59.11%
February	5,225	10,497	-50.22%
March	6,781	12,792	-46.99%
April	8,682	14,275	-39.18%
May	8,960	14,182	-36.82%
June	10,063	14,961	-32.73%
July	12,076	16,639	-27.42%
August	11,135	17,490	-36.33%
September	10,770	15,318	-29.69%
October	8,476	9,079	-6.64%
November	6,982	3,714	87.99%
December	8,304	4,349	90.94%
<b>Total</b>	<b>102,186</b>	<b>144,870</b>	<b>-29.46%</b>







# Int'l Accumulated Passenger Traffic

## Distribution by Airline

		Accumulated 2024		Accumulated 2023		
Airline		Passengers	Rate of Total	Passengers	Rate of Total	Rate of Change
LY	EL AL ISRAEL AIRLINES	6,590,451	47.48%	5,539,127	26.26%	18.97%
6H	ISRAIR AIRLINES	1,468,799	10.58%	1,003,654	4.75%	46.34%
IZ	ARKIA ISRAELI AIRLINES	1,040,067	7.49%	723,998	3.43%	43.65%
W6	WIZZAIR	640,027	4.61%	1,998,168	9.47%	-67.96%
FZ	FLYDUBAI	551,274	3.97%	285,593	1.35%	93.02%
BZ	BLUE BIRD AIRWAYS	525,452	3.78%	425,166	2.01%	23.58%
A3	AEGEAN AIRLINES	258,502	1.86%	367,884	1.74%	-29.73%
U8	TUS AIRWAYS	202,435	1.45%	184,370	0.87%	9.79%
ET	ETHIOPIAN AIRLINES	165,779	1.19%	131,619	0.62%	25.95%
LH	LUFTHANSA	150,588	1.08%	440,612	2.08%	-65.82%
OS	AUSTRIAN AIRLINES	132,573	0.95%	212,574	1.00%	-37.63%
XR	CORENDON EUROPE	120,812	0.87%	34,088	0.16%	
AF	AIR FRANCE	118,641	0.85%	260,553	1.23%	-54.46%
QS	SMARTWINGS	116,722	0.84%	79,417	0.37%	46.97%
WZ	RED WINGS AIRLINES	104,474	0.75%	60,811	0.28%	71.80%
EY	ETIHAD AIRWAYS	100,695	0.72%	106,623	0.50%	-5.55%
UX	AIR EUROPA	97,264	0.70%	138,379	0.65%	-29.71%
UA	UNITED AIRLINES	79,436	0.57%	605,753	2.87%	-86.88%
TO	TRANSAVIA FRANCE	77,606	0.55%	261,436	1.23%	-70.31%
FR	RYANAIR	77,073	0.55%	1,147,880	5.44%	-93.28%
LO	LOT POLISH AIRLINES	76,481	0.55%	217,783	1.03%	-64.88%





# Int'l Accumulated Passenger Traffic

## Distribution by Airline

		Accumulated 2024		Accumulated 2023		
	Airline	Passengers	Rate of Total	Passengers	Rate of Total	Rate of Change
LX	SWISS INT'L AIRLINES	75,546	0.54%	172,454	0.81%	-56.19%
J2	AZERBAIJAN AIRLINES	74,231	0.53%	56,934	0.26%	30.38%
H7	HISKY	66,092	0.47%	53,145	0.25%	24.36%
A4	AZIMUTH AIRLINES	63,523	0.45%	71,956	0.34%	-11.71%
AZ	ITALIA TRASPORTO AEREO	58,924	0.42%	182,187	0.86%	-67.65%
NO	NEOS	54,781	0.39%	74,145	0.35%	-26.11%
H4	HISKY EUROPE SRL	52,083	0.37%	72,988	0.34%	-28.64%
HY	UZBEKISTAN AIR	49,541	0.35%	46,355	0.21%	6.87%
RO	TAROM - ROMANIAN AIR TRAN	46,983	0.33%	59,626	0.28%	-21.20%
BA	BRITISH AIRWAYS PLC	45,896	0.33%	232,191	1.10%	-80.23%
CY	CYPRUS AIRWAYS	44,275	0.31%	72,424	0.34%	-38.86%
I2	IBERIA EXPRESS	43,742	0.31%	150,545	0.71%	-70.94%
5F	FLYONE	42,675	0.30%	26,041	0.12%	63.87%
FB	BULGARIA AIR	42,636	0.30%	56,343	0.26%	-24.32%
LV	AIRZENA	34,063	0.24%			
AI	AIR INDIA	31,254	0.22%	64,220	0.30%	-51.33%
HU	HAINAN AIRLINES	31,199	0.22%	37,892	0.17%	-17.66%
G2	GULLIVAIR	30,063	0.21%	227		
DL	DELTA AIRLINES	28,858	0.20%	290,866	1.37%	-90.07%
SN	BRUSSELS AIRLINES	23,739	0.17%	138,497	0.65%	-82.85%
KL	K.L.M.	23,619	0.17%	116,185	0.55%	-79.67%





# Int'l Accumulated Passenger Traffic

## Distribution by Airline

		Accumulated 2024		Accumulated 2023		
Airline		Passengers	Rate of Total	Passengers	Rate of Total	Rate of Change
A9	GEORGIAN AIRWAYS	22,291	0.16%	74,098	0.35%	-69.91%
E2	AIR HAIFA	17,189	0.12%			
EW	EUROWINGS	15,414	0.11%			
	OTHERS	165,903	1.19%	4,816,944	22.83%	-96.55%
	<b>TOTAL</b>	<b>13,879,671</b>		<b>21,091,751</b>		<b>-34.19%</b>





# Int'l Accumulated Passenger Traffic

## Distribution by Israeli Airlines

		Accumulated 2024		Accumulated 2023		
	Airlines	Passengers	Rate of Total	Passengers	Rate of Total	Rate of Change
LY	EL AL ISRAEL AIRLINES	6,590,451	47.48%	5,539,127	26.26%	18.97%
6H	ISRAIR AIRLINES	1,468,799	10.58%	1,003,654	4.75%	46.34%
IZ	ARKIA ISRAELI AIRLINES	1,040,067	7.49%	723,998	3.43%	43.65%
E2	AIR HAIFA	17,189	0.12%			
	OTHERS	20,865	0.15%	25,707	0.12%	-18.83%
	<b>TOTAL</b>	<b>9,137,371</b>		<b>7,292,486</b>		<b>25.29%</b>





# Int'l Accumulated Passenger Traffic

## Distribution by Countries

Countries	Accumulated 2024		Accumulated 2023		
	Passengers	Rate of Total	Passengers	Rate of Total	Rate of Change
GREECE	1,825,567	13.15%	1,753,257	8.31%	4.12%
UNITED STATES	1,322,363	9.52%	2,010,552	9.53%	-34.22%
CYPRUS	1,074,868	7.74%	981,087	4.65%	9.55%
UNITED ARAB EMIRATES	891,704	6.42%	1,148,534	5.44%	-22.36%
FRANCE	856,310	6.16%	1,199,042	5.68%	-28.58%
ITALY	848,544	6.11%	1,466,320	6.95%	-42.13%
GEORGIA	695,386	5.01%	518,061	2.45%	34.22%
UNITED KINGDOM	631,866	4.55%	1,214,492	5.75%	-47.97%
GERMANY	597,159	4.30%	999,904	4.74%	-40.27%
SPAIN	581,017	4.18%	885,112	4.19%	-34.35%
HUNGARY	466,793	3.36%	577,985	2.74%	-19.23%
ROMANIA	456,220	3.28%	591,352	2.80%	-22.85%
CZECH REPUBLIC	396,747	2.85%	250,288	1.18%	58.51%
POLAND	363,766	2.62%	520,907	2.46%	-30.16%
THAILAND	357,179	2.57%	281,029	1.33%	27.09%
AUSTRIA	333,254	2.40%	554,079	2.62%	-39.85%
BULGARIA	325,541	2.34%	433,255	2.05%	-24.86%
NETHERLANDS	276,071	1.98%	487,399	2.31%	-43.35%
SWITZERLAND	265,795	1.91%	402,206	1.90%	-33.91%
RUSSIAN FEDERATION	261,930	1.88%	260,044	1.23%	0.72%
MOLDOVA	177,027	1.27%	142,565	0.67%	24.17%
ETHIOPIA	164,734	1.18%	129,039	0.61%	27.66%







# Int'l Accumulated Passenger Traffic

## Distribution by Countries

Countries	Accumulated 2024		Accumulated 2023		
	Passengers	Rate of Total	Passengers	Rate of Total	Rate of Change
MONTENEGRO	132,349	0.95%	93,855	0.44%	41.01%
PORTUGAL	116,273	0.83%	193,189	0.91%	-39.81%
AZERBAIJAN	95,729	0.68%	79,612	0.37%	20.24%
UZBEKISTAN	56,891	0.40%	53,233	0.25%	6.87%
JAPAN	48,712	0.35%	30,887	0.14%	57.71%
SERBIA	40,490	0.29%	35,632	0.16%	13.63%
INDIA	32,829	0.23%	66,701	0.31%	-50.78%
CHINA	31,411	0.22%	115,000	0.54%	-72.68%
LITHUANIA	25,327	0.18%	55,775	0.26%	-54.59%
BELGIUM	24,621	0.17%	193,490	0.91%	-87.27%
SLOVENIA	14,784	0.10%	25,445	0.12%	-41.89%
SEYCHELLES	12,498	0.09%	22,718	0.10%	-44.98%
CROATIA	11,764	0.08%	33,992	0.16%	-65.39%
TANZANIA	10,377	0.07%	16,747	0.07%	-38.03%
ARMENIA	10,237	0.07%	16,761	0.07%	-38.92%
LATVIA	9,764	0.07%	27,325	0.12%	-64.26%
SOUTH AFRICA	5,633	0.04%	45,070	0.21%	-87.50%
BOSNIA	5,447	0.03%	1		
FINLAND	4,931	0.03%	36,402	0.17%	-86.45%
SLOVAKIA	3,233	0.02%	7,581	0.03%	-57.35%
MALTA	3,181	0.02%	40,563	0.19%	-92.15%
NORWAY	2,549	0.01%	3,130	0.01%	-18.56%





# Int'l Accumulated Passenger Traffic

## Distribution by Countries

Countries	Accumulated 2024		Accumulated 2023		
	Passengers	Rate of Total	Passengers	Rate of Total	Rate of Change
SRI LANKA	2,396	0.01%	830		188.67%
OTHERS	8,404	0.06%	3,091,303	14.65%	-99.72%
<b>TOTAL</b>	<b>13,879,671</b>		<b>21,091,751</b>		<b>-34.19%</b>





# Int'l Accumulated Passenger Traffic

## Distribution by First Destination

Destination	Accumulated 2024		Accumulated 2023		
	Passengers	Rate of Total	Passengers	Rate of Total	Rate of Change
ATHENS	973,630	7.01%	788,929	3.74%	23.41%
LARNACA	863,292	6.21%	676,190	3.20%	27.67%
DUBAI	753,611	5.42%	917,857	4.35%	-17.89%
PARIS-CHARLES DE GAULLE	658,271	4.74%	774,466	3.67%	-15.00%
NEW YORK - J.F.KENNEDY	529,596	3.81%	641,200	3.04%	-17.40%
BUDAPEST	464,090	3.34%	543,868	2.57%	-14.66%
BUCHAREST - OTOPENI	412,194	2.96%	473,689	2.24%	-12.98%
ROME - FIUMICINO	410,871	2.96%	581,448	2.75%	-29.33%
PRAGUE-RUZYNE	395,553	2.84%	250,150	1.18%	58.12%
NEW YORK - NEWARK	384,819	2.77%	606,971	2.87%	-36.60%
LONDON - HEATHROW	377,041	2.71%	688,755	3.26%	-45.25%
TBILISI	349,619	2.51%	296,874	1.40%	17.76%
BATUMI	344,367	2.48%	220,036	1.04%	56.50%
VIENNA	314,872	2.26%	537,323	2.54%	-41.39%
MADRID	305,760	2.20%	498,612	2.36%	-38.67%
MILAN-MALPENSA	285,829	2.05%	361,464	1.71%	-20.92%
BANGKOK INTL.-SUVARNA BHUM	285,228	2.05%	221,651	1.05%	28.68%
RHODES-PARADISI	284,606	2.05%	282,541	1.33%	0.73%
AMSTERDAM	276,021	1.98%	486,713	2.30%	-43.28%
BARCELONA	265,970	1.91%	365,519	1.73%	-27.23%
LUTON	235,996	1.70%	376,148	1.78%	-37.25%
HERAKLION	233,327	1.68%	269,065	1.27%	-13.28%





# Int'l Accumulated Passenger Traffic

## Distribution by First Destination

Destination	Accumulated 2024		Accumulated 2023		
	Passengers	Rate of Total	Passengers	Rate of Total	Rate of Change
WARSAW	233,123	1.67%	313,780	1.48%	-25.70%
ZURICH	214,954	1.54%	274,179	1.29%	-21.60%
PAPHOS	211,338	1.52%	304,344	1.44%	-30.55%
BERLIN BRANDENBURG INTL	200,407	1.44%	312,175	1.48%	-35.80%
FRANKFURT	193,830	1.39%	349,700	1.65%	-44.57%
SOFIA	178,134	1.28%	249,340	1.18%	-28.55%
MUNICH	178,078	1.28%	259,926	1.23%	-31.48%
CHISINAU	177,027	1.27%	142,565	0.67%	24.17%
LOS ANGELES	169,424	1.22%	126,720	0.60%	33.69%
ADDIS ABABA	164,734	1.18%	129,039	0.61%	27.66%
MOSCOW-DOMODEDOVO	156,188	1.12%	133,833	0.63%	16.70%
ABU DHABI	134,989	0.97%	226,248	1.07%	-40.33%
MIAMI INTERNATIONAL	128,812	0.92%	160,002	0.75%	-19.49%
THESSALONIKI	115,365	0.83%	166,102	0.78%	-30.54%
TIVAT	111,769	0.80%	60,378	0.28%	85.11%
LISBON	98,207	0.70%	168,993	0.80%	-41.88%
KRAKOW	97,111	0.69%	141,908	0.67%	-31.56%
BAKU HEYDAR ALIYEV INT'L	95,717	0.68%	79,612	0.37%	20.22%
SOCHI	93,636	0.67%	57,093	0.27%	64.00%
BURGAS	83,012	0.59%	89,804	0.42%	-7.56%
BOSTON-LOGAN INT	76,322	0.54%	98,023	0.46%	-22.13%
PARIS-ORLY	76,211	0.54%	230,482	1.09%	-66.93%





# Int'l Accumulated Passenger Traffic

## Distribution by First Destination

Destination	Accumulated 2024		Accumulated 2023		
	Passengers	Rate of Total	Passengers	Rate of Total	Rate of Change
PHUKET	71,844	0.51%	59,063	0.28%	21.63%
VARNA	64,391	0.46%	85,146	0.40%	-24.37%
CORFU	61,042	0.43%	50,129	0.23%	21.76%
GENEVA	50,082	0.36%	94,339	0.44%	-46.91%
VILAFRANCA-VERONA	49,484	0.35%	42,809	0.20%	15.59%
TOKYO INTL.-NARITA	48,709	0.35%	30,873	0.14%	57.77%
MARSEILLE	48,414	0.34%	57,323	0.27%	-15.54%
VENICE	45,998	0.33%	92,755	0.43%	-50.40%
NICE	45,736	0.32%	72,949	0.34%	-37.30%
TASHKENT	45,625	0.32%	47,001	0.22%	-2.92%
BELGRADE	40,490	0.29%	35,632	0.16%	13.63%
MIKONOS	35,801	0.25%	48,845	0.23%	-26.70%
DELHI	32,811	0.23%	65,284	0.30%	-49.74%
FORT LAUDERDALE	32,017	0.23%	2,478	0.01%	
SHENZHEN BAOAN INT.	31,199	0.22%	5,375	0.02%	
KOS	27,995	0.20%	34,167	0.16%	-18.06%
KATOWICE	27,674	0.19%	50,759	0.24%	-45.47%
BRUSSELS	24,109	0.17%	141,267	0.66%	-82.93%
CATANIA FONTANAROSSA	22,518	0.16%	57,674	0.27%	-60.95%
BACAU	22,332	0.16%			
VILNIUS INTL	21,341	0.15%	55,399	0.26%	-61.47%
PODGORICA	20,574	0.14%	33,477	0.15%	-38.54%







# Int'l Accumulated Passenger Traffic

## Distribution by First Destination

Destination	Accumulated 2024		Accumulated 2023		
	Passengers	Rate of Total	Passengers	Rate of Total	Rate of Change
DUSSELDORF	19,513	0.14%	16,601	0.07%	17.54%
SANTORINI	19,085	0.13%	18,549	0.08%	2.88%
GRENOBLE-SAUNT GEOIRS	18,984	0.13%	29,224	0.13%	-35.03%
PORTO	18,043	0.12%	22,760	0.10%	-20.72%
SALZBURG	15,648	0.11%	10,546	0.05%	48.37%
NAPLES-CAPODICHINO	15,105	0.10%	146,446	0.69%	-89.68%
LJUBLJANA	14,784	0.10%	25,445	0.12%	-41.89%
KEFALLINIA	13,680	0.09%	56		
SITIA	13,345	0.09%			
MAHE SEYCHELLES INTL	12,498	0.09%	22,718	0.10%	-44.98%
LONDON - GATWICK	12,091	0.08%	111,163	0.52%	-89.12%
PREVEZA	11,756	0.08%	13,874	0.06%	-15.26%
SAMARKAND	11,266	0.08%	6,204	0.02%	81.59%
KHANIA-SOUDABAY	10,810	0.07%	37,537	0.17%	-71.20%
BERGAMO	10,362	0.07%	87,190	0.41%	-88.11%
YEREVAN	10,237	0.07%	16,761	0.07%	-38.92%
SUCEAVA-ROMANIA	9,874	0.07%	6,156	0.02%	60.39%
RIGA	9,764	0.07%	27,325	0.12%	-64.26%
IASI	9,039	0.06%	44,694	0.21%	-79.77%
ZAGREB	8,726	0.06%	27,668	0.13%	-68.46%
PATRAS ARAXOS	8,443	0.06%	13,723	0.06%	-38.47%
MOSCOW-ZHUKOVSKY INTL AIR	8,440	0.06%	6,805	0.03%	24.02%





# Int'l Accumulated Passenger Traffic

## Distribution by First Destination

Destination	Accumulated 2024		Accumulated 2023		
	Passengers	Rate of Total	Passengers	Rate of Total	Rate of Change
ZANZIBAR	8,428	0.06%	11,935	0.05%	-29.38%
MALAGA	8,095	0.05%	7,407	0.03%	9.28%
MITILINI	7,814	0.05%	76		
KARPATOS	7,425	0.05%	8,273	0.03%	-10.25%
BARI -PALESE MACCHIE	6,218	0.04%	22,449	0.10%	-72.30%
MANCHESTER	5,726	0.04%	36,717	0.17%	-84.40%
RZESZOW-JASIONKA	5,683	0.04%	4,488	0.02%	26.62%
JOHANNESBURG	5,633	0.04%	45,056	0.21%	-87.49%
SARAJEVO	5,447	0.03%	1		
ROVANIEMI	4,924	0.03%	10,281	0.04%	-52.10%
KAUNAS	3,986	0.02%	376		
MULHOUSE	3,769	0.02%			
LYON - SATOLAS	3,715	0.02%	31,371	0.14%	-88.15%
ST. PETERSBURG	3,387	0.02%	83		
MALTA	3,181	0.02%	40,563	0.19%	-92.15%
PIESTANY	2,953	0.02%	2,941	0.01%	0.40%
INNSBRUCK	2,725	0.01%	6,200	0.02%	-56.04%
DEBRECEN	2,703	0.01%	34,117	0.16%	-92.07%
ZADAR	2,559	0.01%	11		
DUBAI AL MAKTOUM INT AP	2,539	0.01%	1,399		81.48%
COLOMBO-KATUNAYAKE	2,396	0.01%	830		188.67%
BADEN BADEN	2,055	0.01%	28,026	0.13%	-92.66%





# Int'l Accumulated Passenger Traffic

## Distribution by First Destination

Destination	Accumulated 2024		Accumulated 2023		
	Passengers	Rate of Total	Passengers	Rate of Total	Rate of Change
MEMMINGEN	2,020	0.01%	28,062	0.13%	-92.80%
OTHERS	31,660	0.22%	3,983,171	18.88%	-99.20%
<b>TOTAL</b>	<b>13,879,671</b>		<b>21,091,751</b>		<b>-34.19%</b>



# Cargo Activity





# Cargo Handling

## Distribution by Transporter

Transporter	2024 (Ton)	2023 (Ton)	Rate of Change
Cargo on Passenger Aircrafts - Incoming	46,168	85,938	-46.27%
Cargo on Passenger Aircrafts - Outgoing	48,795	65,363	-25.34%
<b>Total Cargo on Passenger Aircrafts</b>	<b>94,962</b>	<b>151,298</b>	<b>-37.23%</b>
Cargo on Cargo Aircrafts - Incoming	177,411	127,944	38.66%
Cargo on Cargo Aircrafts - Outgoing	75,336	64,420	16.94%
<b>Total Cargo on Cargo Aircrafts</b>	<b>252,745</b>	<b>192,368</b>	<b>31.38%</b>
<b>Total</b>	<b>347,707</b>	<b>343,666</b>	<b>1.17%</b>

## Distribution by Months

Month	2024 (Ton)			2023 (Ton)			Rate of Change
	Cargo	Mail	Total	Cargo	Mail	Total	
January	26,619	580	27,200	28,685	640	29,325	-7.24%
February	26,737	441	27,178	28,279	565	28,845	-5.77%
March	29,890	402	30,291	32,972	746	33,718	-10.16%
April	27,296	427	27,723	27,461	630	28,090	-1.30%
May	27,702	524	28,226	29,348	660	30,007	-5.93%
June	27,477	389	27,866	27,858	568	28,426	-1.97%
July	30,216	435	30,651	28,988	553	29,542	3.75%
August	27,787	342	28,130	30,414	578	30,992	-9.23%
September	28,867	416	29,284	28,104	530	28,634	2.27%
October	26,562	322	26,884	22,974	353	23,328	15.24%
November	30,622	442	31,064	24,361	488	24,850	25.00%
December	32,802	408	33,210	27,413	497	27,909	18.99%
<b>Total</b>	<b>342,577</b>	<b>5,128</b>	<b>347,707</b>	<b>336,857</b>	<b>6,808</b>	<b>343,666</b>	<b>1.17%</b>







# Accumulated Cargo Handling on Passengers Aircrafts

## Distribution by Airline

Accumulated 2024					Accumulated 2023					
Airline		Incoming Cargo (Ton)	Outgoing Cargo (Ton)	Cargo (Ton)	Rate of Total	Incoming Cargo (Ton)	Outgoing Cargo (Ton)	Cargo (Ton)	Rate of Total	Rate of Change
LY	EL AL ISRAEL AIRLINES	30,215	38,572	68,787	72.43%	26,566	29,405	55,971	36.99%	22.89%
AF	AIR FRANCE	2,408	2,151	4,559	4.80%	4,665	2,811	7,476	4.94%	-39.01%
HU	HAINAN AIRLINES	2,889	1,414	4,303	4.53%	2,591	1,000	3,591	2.37%	19.82%
UX	AIR EUROPA	2,170	1,000	3,171	3.33%	2,680	824	3,504	2.31%	-9.50%
UA	UNITED AIRLINES	1,035	1,121	2,156	2.27%	8,045	8,014	16,059	10.61%	-86.57%
FZ	FLYDUBAI	1,400	295	1,695	1.78%	896	211	1,106	0.73%	53.25%
LX	SWISS INT'L AIRLINES	777	734	1,512	1.59%	538	364	903	0.59%	67.44%
HY	UZBEKISTAN AIR	653	430	1,083	1.14%	226	257	483	0.31%	124.22%
ET	ETHIOPIAN AIRLINES	543	330	873	0.91%	857	307	1,164	0.76%	-25.00%
AI	AIR INDIA	393	353	745	0.78%	700	448	1,148	0.75%	-35.10%
EY	ETIHAD AIRWAYS	363	323	686	0.72%	1,346	534	1,879	1.24%	-63.49%
FX	FEDERAL EXPRESS	470	190	660	0.69%	9	2	12		
A3	AEGEAN AIRLINES	426	61	488	0.51%	411	169	580	0.38%	-15.86%
DL	DELTA AIRLINES	243	240	483	0.50%	2,564	2,075	4,639	3.06%	-89.58%
QS	SMARTWINGS	304	42	347	0.36%	163	16	180	0.11%	92.77%
NC R	NATIONAL AIRLINES		290	290	0.30%	14	69	83	0.05%	
LH	LUFTHANSA	177	66	243	0.25%	442	325	767	0.50%	-68.31%
J2	AZERBAIJAN AIRLINES	153	84	237	0.24%	90	13	104	0.06%	127.88%
RO	TAROM - ROMANIAN AIR TRAN	179	44	223	0.23%	111	32	142	0.09%	57.04%
LO	LOT POLISH AIRLINES	151	57	208	0.21%	339	80	419	0.27%	-50.35%
AZ	ITALIA TRASPORTO AEREO	113	77	191	0.20%	327	179	506	0.33%	-62.25%
H7	HISKY	109	62	171	0.18%	27	14	41	0.02%	





# Accumulated Cargo Handling on Passengers Aircrafts

## Distribution by Airline

Accumulated 2024					Accumulated 2023					
Airline		Incoming Cargo (Ton)	Outgoing Cargo (Ton)	Cargo (Ton)	Rate of Total	Incoming Cargo (Ton)	Outgoing Cargo (Ton)	Cargo (Ton)	Rate of Total	Rate of Change
U8	TUS AIRWAYS	140	28	168	0.17%	144	19	163	0.10%	3.06%
WZ	RED WINGS AIRLINES	66	93	159	0.16%	27	43	70	0.04%	127.14%
H4	HISKY EUROPE SRL	129	20	149	0.15%					
OS	AUSTRIAN AIRLINES	124	19	144	0.15%	133	60	193	0.12%	-25.38%
A4	AZIMUTH AIRLINES	125	18	143	0.15%	23	7	30	0.01%	
C6	CENTRUM AIR		126	126	0.13%					
5F	FLYONE	82	35	118	0.12%	48	12	60	0.03%	96.66%
I2	IBERIA EXPRESS	32	60	92	0.09%	119	98	217	0.14%	-57.60%
IZ	ARKIA ISRAELI AIRLINES	73	18	91	0.09%	3	42	45	0.02%	102.22%
GH	GEORGIAN AIRLINES		86	86	0.09%		3	3		
BA	BRITISH AIRWAYS PLC		78	78	0.08%	3,146	1,384	4,530	2.99%	-98.27%
5Y	ATLAS AIR Inc.		77	77	0.08%		128	128	0.08%	-39.84%
HM	AIR SEYCHELLES	64		65	0.06%	86	1	88	0.05%	-26.13%
CY	CYPRUS AIRWAYS	58	3	61	0.06%	14	6	20	0.01%	
RD	EASY CHARTER LLC		56	56	0.05%		5	5		
6H	ISRAIR AIRLINES	4	46	51	0.05%	2	25	27	0.01%	88.88%
BT	AIR BALTIC	38	7	45	0.04%	87	23	110	0.07%	-59.09%
AC	AIR CANADA	7	19	25	0.02%	2,966	3,099	6,065	4.00%	-99.58%
KL	K.L.M.	2	14	16	0.01%	1,540	672	2,212	1.46%	-99.27%
FB	BULGARIA AIR	15		15	0.01%	24	13	36	0.02%	-58.33%
QY	EUROPEAN AIR TRANSPORT	6	7	13	0.01%	11	32	43	0.02%	-69.76%
ZS	SOLINAIR		13	13	0.01%					





# Accumulated Cargo Handling on Passengers Aircrafts

## Distribution by Airline

Accumulated 2024					Accumulated 2023				
Airline	Incoming Cargo (Ton)	Outgoing Cargo (Ton)	Cargo (Ton)	Rate of Total	Incoming Cargo (Ton)	Outgoing Cargo (Ton)	Cargo (Ton)	Rate of Total	Rate of Change
8V ASTRAL AVIATION		11	11	0.01%		21	21	0.01%	-47.61%
SN BRUSSELS AIRLINES	7	3	10	0.01%	219	21	240	0.15%	-95.83%
KLJ KLASJET	10		10	0.01%					
MJ MYWAY AIRLINES	1	7	9			3	3		200.00%
BZ BLUE BIRD AIRWAYS	5		5		1		1		
3V ASL AIRLINES BELGIUM		5	5						
HH QANOT SHARQ	3		3						
JAG ALPHA SKY LCC		3	3						
GW GETJET AIRLINES		1	1						
LV AIRZENA		1	1						
3F FLYONE ARMENIA LLC	1		1						
<b>TOTAL</b>	<b>46,166</b>	<b>48,794</b>	<b>94,961</b>		<b>85,938</b>	<b>65,361</b>	<b>151,298</b>		<b>-37.23%</b>





# Accumulated Cargo Handling on Cargo Aircrafts

## Distribution by Airline

Accumulated 2024						Accumulated 2023				
Airline		Incoming Cargo (Ton)	Outgoing Cargo (Ton)	Cargo (Ton)	Rate of Total	Incoming Cargo (Ton)	Outgoing Cargo (Ton)	Cargo (Ton)	Rate of Total	Rate of Change
ICL	C.A.L ISRAELI CARGO	60,161	21,149	81,310	32.17%	43,484	16,188	59,672	31.02%	36.26%
QY	EUROPEAN AIR TRANSPORT	19,917	17,004	36,921	14.60%	16,975	12,566	29,541	15.35%	24.98%
AZG	SILK WAY WEST AIRLINES	16,095	10,204	26,299	10.40%	9,169	8,092	17,261	8.97%	52.36%
LY	EL AL ISRAEL AIRLINES	11,879	8,024	19,903	7.87%	6,159	3,832	9,991	5.19%	99.20%
C6	CENTRUM AIR	15,615	1,102	16,718	6.61%					
NCR	NATIONAL AIRLINES	11,017	832	11,849	4.68%	2,540	79	2,619	1.36%	
FX	FEDERAL EXPRESS	6,625	3,605	10,230	4.04%	6,248	3,344	9,592	4.98%	6.65%
LH	LUFTHANSA	4,575	3,667	8,242	3.26%	4,445	3,884	8,329	4.32%	-1.04%
RD	EASY CHARTER LLC	5,956	1,421	7,377	2.91%	528	64	592	0.30%	
ABR	ASL Airlines (Ireland) Li	3,525	2,920	6,444	2.54%	536	487	1,024	0.53%	
3V	ASL AIRLINES BELGIUM	4,409	1,834	6,243	2.47%	44		44	0.02%	
MNB	MNG CARGO AIRLINES	5,122	720	5,842	2.31%	16,345	2,483	18,828	9.78%	-68.97%
ET	ETHIOPIAN AIRLINES	1,659	872	2,531	1.00%	923	370	1,294	0.67%	95.59%
ABD	ATLANTA ICELANDIC	2,278	1	2,279	0.90%	543	218	761	0.39%	199.47%
IGA	SKY TAXI	1,319	241	1,560	0.61%	1,081	889	1,970	1.02%	-20.81%
GH	GEORGIAN AIRLINES	1,370	3	1,372	0.54%	73		73	0.03%	
8V	ASTRAL AVIATION	1,124	1	1,125	0.44%	499	66	565	0.29%	99.11%
M4	POSTE AIR CARGO	750	351	1,101	0.43%	690	287	977	0.50%	12.69%
5Y	ATLAS AIR Inc.	951	29	980	0.38%	777	4	782	0.40%	25.31%
WT	SWIFT AIR	485	381	866	0.34%					
5O	ASL AIRLINES	403	331	734	0.29%	146	120	266	0.13%	175.93%
HY	UZBEKISTAN AIR	719	2	720	0.28%					





# Accumulated Cargo Handling on Cargo Aircrafts

## Distribution by Airline

Accumulated 2024					Accumulated 2023				
Airline	Incoming Cargo (Ton)	Outgoing Cargo (Ton)	Cargo (Ton)	Rate of Total	Incoming Cargo (Ton)	Outgoing Cargo (Ton)	Cargo (Ton)	Rate of Total	Rate of Change
PVV FLY PRO	298	35	333	0.13%					
MJ MYWAY AIRLINES	255	39	295	0.11%	73		73	0.03%	
RH HONG KONG AIR CARGO CARRI	195	33	227	0.08%					
AZQ SILK WAY AIRLINES	37	133	170	0.06%	21	32	53	0.02%	
HQ COMPASS AIR CARGO	79	70	150	0.05%					
ZS SOLINAIR	82		82	0.03%					
SMF SAN MARINO AIRLINES	44	15	59	0.02%	5,258	5,336	10,593	5.50%	-99.44%
D0 DHL AIR Ltd	24	21	46	0.01%					
JAG ALPHA SKY LCC	22		22						
P7 SUPERNOVA AIRLINES	17	3	19						
FGB AIR 65	7	5	12						
QAS QUALITY AIR SERVICES	12		12		21		21	0.01%	-42.85%
IZ ARKIA ISRAELI AIRLINES		3	3			15	15		-80.00%
VKA VULKAN AIR	2		2		3		3		-33.33%
RRR ROYAL AIR FORCE	1		1						
U8 TUS AIRWAYS		1	1						
OTHERS	380	285	665	0.26%	11,363	6,064	17,427	9.05%	-96.18%
TOTAL	177,409	75,336	252,745		127,945	64,421	192,366		31.38%





# Accumulated Cargo Handling on Cargo Aircrafts

## Distribution by Countries

Countries	Accumulated 2024				Accumulated 2023				
	Incoming Cargo (Ton)	Outgoing Cargo (Ton)	Cargo (Ton)	Rate of Total	Incoming Cargo (Ton)	Outgoing Cargo (Ton)	Cargo (Ton)	Rate of Total	Rate of Change
BELGIUM	43,682	25,699	69,381	27.45%	30,395	27,345	57,741	30.01%	20.15%
GERMANY	31,045	24,232	55,277	21.87%	25,316	14,310	39,626	20.59%	39.49%
CHINA	27,955	2,453	30,408	12.03%	17,553	1,804	19,357	10.06%	57.09%
AZERBAIJAN	9,857	10,271	20,129	7.96%	7,598	8,124	15,722	8.17%	28.03%
UZBEKISTAN	14,879	1,103	15,981	6.32%		6	6		
TURKEY	7,319	1,385	8,703	3.44%	21,593	4,571	26,164	13.60%	-66.73%
SPAIN	6,523	119	6,642	2.62%	1,849	46	1,895	0.98%	
GEORGIA	3,148	91	3,239	1.28%	149		149	0.07%	
NORWAY	3,170	33	3,203	1.26%	9,494	34	9,527	4.95%	-66.37%
INDIA	2,635	283	2,918	1.15%	98	78	176	0.09%	
GREECE	2,097	689	2,785	1.10%	109	508	618	0.32%	
FRANCE	1,303	1,378	2,681	1.06%	2,835	734	3,568	1.85%	-24.85%
ITALY	1,222	1,203	2,426	0.95%	848	867	1,715	0.89%	41.45%
ETHIOPIA	1,659	705	2,364	0.93%	923	257	1,180	0.61%	100.33%
CYPRUS	597	790	1,387	0.54%	4,179	771	4,950	2.57%	-71.97%
EGYPT	45	1,290	1,334	0.52%	14	2,454	2,469	1.28%	-45.97%
KENYA	925	220	1,145	0.45%	499	40	540	0.28%	112.03%
MALTA		787	787	0.31%					
SWITZERLAND	242	224	466	0.18%	175	119	294	0.15%	58.50%
UNITED KINGDOM	217	100	317	0.12%	111	166	276	0.14%	14.85%
NETHERLANDS	128	136	263	0.10%	116	132	247	0.12%	6.47%
SOUTH KOREA	201		201	0.07%					





# Accumulated Cargo Handling on Cargo Aircrafts

## Distribution by Countries

Countries	Accumulated 2024				Accumulated 2023				
	Incoming Cargo (Ton)	Outgoing Cargo (Ton)	Cargo (Ton)	Rate of Total	Incoming Cargo (Ton)	Outgoing Cargo (Ton)	Cargo (Ton)	Rate of Total	Rate of Change
CZECH REPUBLIC	89	97	186	0.07%	90	1	91	0.04%	104.39%
VIETNAM	175		175	0.06%					
TANZANIA		164	164	0.06%		40	40	0.02%	
POLAND		141	141	0.05%	38		38	0.01%	
ROMANIA	59	71	130	0.05%	35	10	45	0.02%	188.88%
KAZAKHSTAN	100		100	0.03%	107	3	110	0.05%	-9.09%
MOROCCO	91		91	0.03%	61	74	135	0.07%	-32.59%
SINGAPORE	82		82	0.03%					
BULGARIA	10	47	57	0.02%					
JAPAN	54		54	0.02%					
FINLAND		49	49	0.01%	19	35	53	0.02%	-7.54%
JORDAN	1	31	32	0.01%	90	121	210	0.10%	-84.76%
THAILAND		29	29	0.01%	344	153	497	0.25%	-94.16%
CANADA	21		21		34		34	0.01%	-38.23%
CROATIA		15	15						
LUXEMBOURG	14		14		176		176	0.09%	-92.04%
MACEDONIA	10		10		12		12		-16.66%
SWEDEN		6	6			9	9		-33.33%
TURKMENISTAN		4	4						
MONTENEGRO	4		4			3	3		33.33%
AUSTRIA		4	4			759	759	0.39%	-99.47%
PORTUGAL		2	2						







# Accumulated Cargo Handling on Cargo Aircrafts

## Distribution by Countries

Countries	Accumulated 2024				Accumulated 2023				
	Incoming Cargo (Ton)	Outgoing Cargo (Ton)	Cargo (Ton)	Rate of Total	Incoming Cargo (Ton)	Outgoing Cargo (Ton)	Cargo (Ton)	Rate of Total	Rate of Change
OTHERS	17,852	1,486	19,338	7.65%	3,084	848	3,932	2.04%	
TOTAL	177,409	75,336	252,745		127,945	64,421	192,366		31.38%



# Domestic Activity

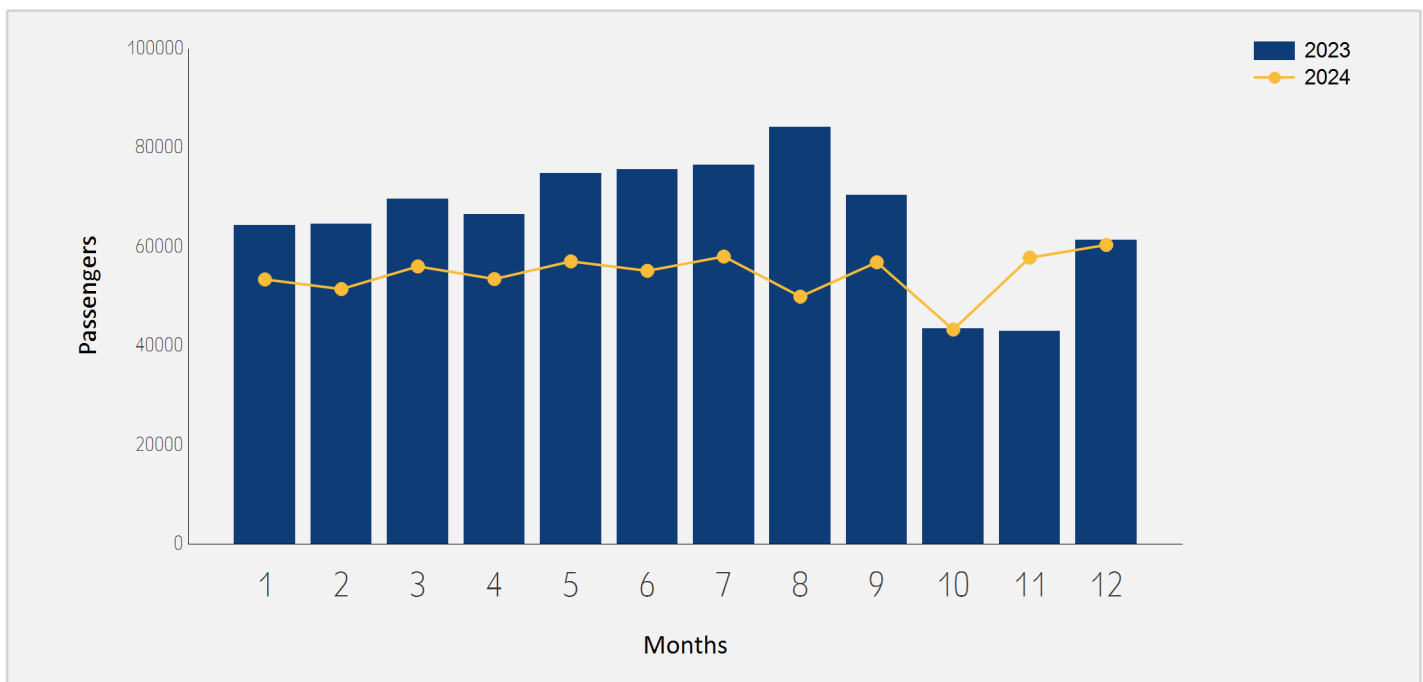




# Domestic Passenger Traffic

## Distribution by Months

Month	2024	2023	Rate of Change
January	53,410	64,275	-16.90%
February	51,461	64,605	-20.34%
March	56,042	69,701	-19.59%
April	53,490	66,584	-19.66%
May	57,056	74,806	-23.72%
June	55,148	75,564	-27.01%
July	58,034	76,526	-24.16%
August	49,938	84,142	-40.65%
September	56,877	70,374	-19.17%
October	43,284	43,521	-0.54%
November	57,818	42,967	34.56%
December	60,379	61,414	-1.68%
<b>Total</b>	<b>652,937</b>	<b>794,479</b>	<b>-17.81%</b>

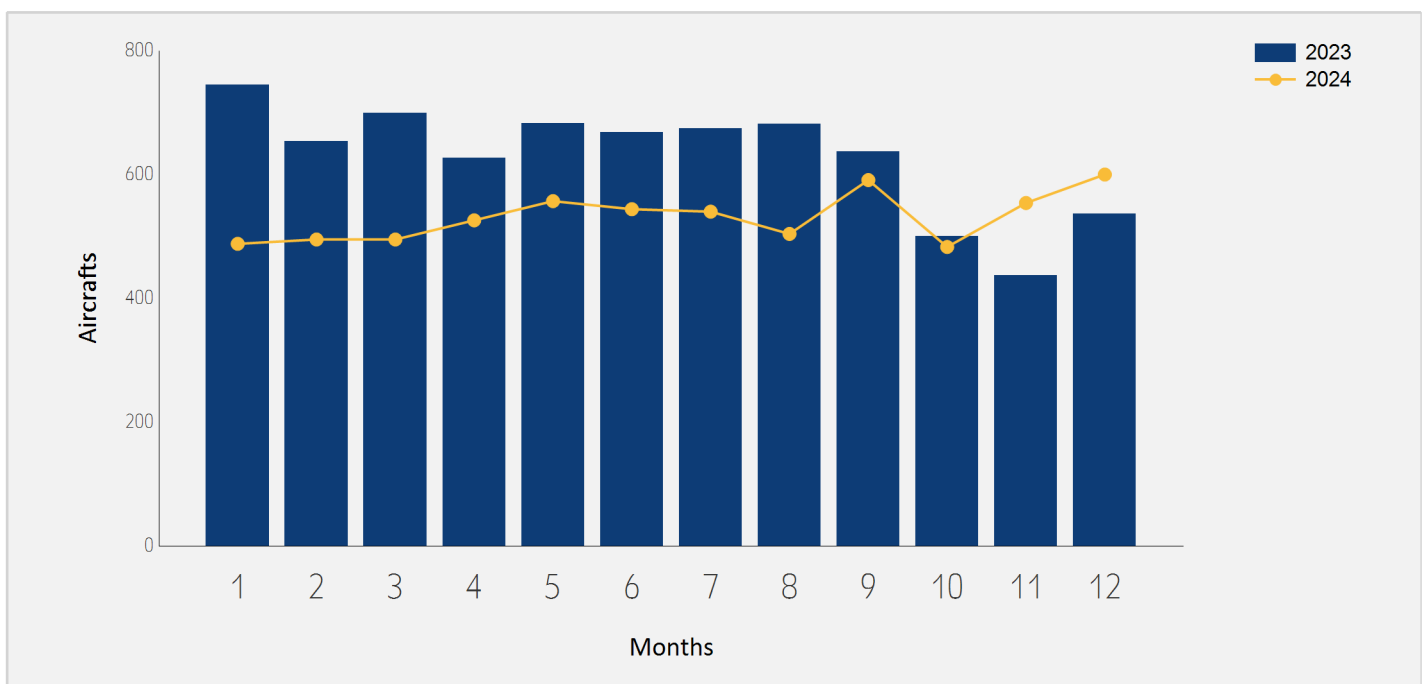




# Domestic Aircrafts Traffic

## Distribution by Months

Month	2024	2023	Rate of Change
January	488	745	-34.49%
February	495	654	-24.31%
March	495	699	-29.18%
April	526	627	-16.10%
May	557	683	-18.44%
June	544	668	-18.56%
July	540	674	-19.88%
August	504	682	-26.09%
September	591	637	-7.22%
October	483	500	-3.40%
November	554	437	26.77%
December	600	536	11.94%
<b>Total</b>	<b>6,377</b>	<b>7,542</b>	<b>-15.44%</b>





# Accumulated Domestic Passengers Traffic

## Distribution by Airlines

Accumulated 2024			Accumulated 2023		
Airline	Passengers	Rate of Total	Passengers	Rate of Total	Rate of Change
IZ ARKIA ISRAELI AIRLINES	436,047	66.78%	531,437	66.89%	-17.94%
6H ISRAIR AIRLINES	213,870	32.75%	260,985	32.84%	-18.05%
E2 AIR HAIFA	1,703	0.26%			
OTHERS	1,317	0.20%	2,057	0.25%	-35.97%
<b>TOTAL</b>	<b>652,937</b>		<b>794,479</b>		<b>-17.81%</b>

## Distribution by Destinations

Accumulated 2024			Accumulated 2023		
Destination	Passengers	Rate of Total	Passengers	Rate of Total	Rate of Change
RAMON	651,415	99.76%	788,670	99.26%	-17.40%
OTHERS	1,522	0.23%	5,809	0.73%	-73.79%
<b>TOTAL</b>	<b>652,937</b>		<b>794,479</b>		<b>-17.81%</b>

