



May 2025

Monthly Report

Ben Gurion International Airport





Israel Airport Authority

Ben Gurion International Airport

Produced by the Industry & Management Department

This report is protected by copyright and is the exclusive property of the Israel Airports Authority.

It must be emphasized that the data in the report are based on the reports of the airlines, and received under their responsibility.

The information is intended for personal use, and therefore may not be quoted or passed on to any third party without written permission from the Israel Airports Authority.

In addition, no commercial use may be made of this report.

Edit Yehoshua

Activity Coordinator

Tel. +972-3-9752017

Email: edity@iaa.gov.il

Rachel Lehava

Manager, Industrial & Management Dep.

Tel. +972-3-9752019

Email: rachelle@iaa.gov.il

Dimitry Shumacher

Head, Industrial & Management Dep.

Tel. +972-3-9750193

Email: dimitrysh@iaa.gov.il





Dear friends and partners,

I hereby respectfully submit for your review a report summarizing the aviation activity at Ben - Gurion International Airport in May 2025.

During the month, a total of 1,512,059 passengers on 11,339 international and domestic flights passed through Ben- Gurion Airport.

International passenger traffic in May totaled 1,448,420 passengers representing an increase of 18.24% compared to May 2024.

International aircraft traffic totaled 10,759 flights, representing an increase of 20.07% compared to May 2024.

International passenger traffic at Terminal 3 this month totaled 1,310,851 passengers. Passengers on International flights from Terminal 1, serving departing passengers only, totaled 137,569.

On domestic flights 63,639 passengers passed through Ben- Gurion Airport this month, compared with 57,056 in May 2024, an increase of 11.53%.

Israeli airlines carried 981,086 passengers in this month, 67.73% of all travelers passing through Ben - Gurion Airport, an increase of 32.77% relative to the previous May.

The airlines which contributed the most to the increase of passenger traffic this month are: ISRAIR AIRLINES, EL AL ISRAEL AIRLINES and ARKIA ISRAELI AIRLINES.

The Destination with the highest volume of activity was ATHENS with a total of 105,942 passengers to and from, an increase of 23.82% compared to the previous May.

The country with the highest volume of activity was the GREECE, with 193,287 passengers, constituting 13.34% of all activity.

Of the leading countries, the highest growth relative to last May was recorded in passenger traffic to GREECE, UNITED ARAB EMIRATES and ITALY.

Cargo transportation this month stood at 31,380 tons and reflects an increase of 11.17% compared to May 2024. 8,050 tons were transported in passenger aircraft and 23,330 tons in cargo aircraft.

Below you will find additional tables providing details about movements of aircraft, passengers and cargo at Ben - Gurion International Airport.

*The Data is displayed according to actual UTC time.

Sincerely yours,

Udi Bar Oz

Managing Director,

Ben-Gurion International Airport





Content



Aviation Activity

Aviation Activity Summary	1
International Activity Summary	2 - 4
Domestic Activity Summary	5



International Activity

Distribution By Months	7 - 8
Distribution By Airlines	9 - 15
Distribution By Countries	16 - 19
Distribution By First Destination	20 - 29



Cargo Activity

Distribution by Transporter	31
Distribution By Months	31
Distribution By Airlines	32 - 38
Distribution By Countries	39 - 41



Domestic Activity

Distribution By Months	43 - 44
Distribution By Airlines	45
Distribution By Destinations	46



Passengers and Aircrafts

Aviation Activity at Ben Gurion International Airport

International Activity

	Current Month			Accumulated Since the beginning of the year		
	May 2025	May 2024	Rate Of Change	2025	2024	Rate Of Change
Incoming Aircrafts	5,378	4,488	19.83%	25,653	17,195	49.18%
Outgoing Aircrafts	5,381	4,472	20.32%	25,651	17,185	49.26%
Total Aircrafts	10,759	8,960	20.07%	51,304	34,380	49.22%
Incoming Passengers	726,472	638,315	13.81%	3,435,355	2,281,157	50.59%
Outgoing Passengers	721,948	586,650	23.06%	3,433,981	2,297,145	49.48%
Transit Passengers	321	351	-8.54%	793	1,151	-31.10%
Total Passengers	1,448,420	1,224,965	18.24%	6,869,336	4,578,302	50.04%

Domestic Activity

	Current Month			Accumulated Since the beginning of the year		
	May 2025	May 2024	Rate Of Change	2025	2024	Rate Of Change
Aircrafts	580	557	4.12%	2,724	2,561	6.36%
Passengers	63,639	57,056	11.53%	290,688	271,459	7.08%

International and Domestic Activity Summary

	Current Month			Accumulated Since the beginning of the year		
	May 2025	May 2024	Rate Of Change	2025	2024	Rate Of Change
Aircrafts	11,339	9,517	19.14%	54,028	36,941	46.25%
Passengers	1,512,059	1,282,021	17.94%	7,160,024	4,849,761	47.63%



Passengers and Aircrafts

Int'l Aviation Activity at Ben Gurion International Airport by Terminal

Terminal 3

	Current Month			Accumulated Since the begining of the year		
	May 2025	May 2024	Rate of Change	2025	2024	Rate of Change
Incoming Aircrafts	5,378	4,488	19.83%	25,653	17,195	49.18%
Outgoing Aircrafts	4,519	4,472	1.05%	23,439	17,185	36.39%
Total Aircrafts	9,897	8,960	10.45%	49,092	34,380	42.79%
Incoming Passengers	726,472	638,315	13.81%	3,435,355	2,281,157	50.59%
Outgoing Passengers	584,379	586,650	-0.38%	3,077,003	2,297,145	33.94%
Transit Passengers	321	351	-8.54%	793	1,151	-31.10%
Total Passengers	1,310,851	1,224,965	7.01%	6,512,358	4,578,302	42.24%

Terminal 1

	Current Month			Accumulated Since the begining of the year		
	May 2025	May 2024	Rate of Change	2025	2024	Rate of Change
Incoming Aircrafts						
Outgoing Aircrafts	862			2,212		
Total Aircrafts	862			2,212		
Incoming Passengers						
Outgoing Passengers	137,569			356,978		
Total Passengers	137,569			356,978		





Passengers and Aircrafts

Int'l Aviation Activity at Ben Gurion International Airport by Flight Type

Schedule and Charter Flights

	Current Month			Accumulated Since the beginning of the year		
	May 2025	May 2024	Rate of Change	2025	2024	Rate of Change
Incoming Aircrafts	4,593	3,790	21.18%	21,895	13,926	57.22%
Outgoing Aircrafts	4,615	3,799	21.47%	21,958	14,040	56.39%
Total Aircrafts	9,208	7,589	21.33%	43,853	27,966	56.80%
Incoming Passengers	724,776	637,224	13.73%	3,428,636	2,275,911	50.64%
Outgoing Passengers	720,490	585,684	23.01%	3,428,133	2,291,975	49.57%
Transit Passengers	321	351	-8.54%	793	1,151	-31.10%
Total Passengers	1,445,266	1,222,908	18.18%	6,856,769	4,567,886	50.10%

Private Flights

	Current Month			Accumulated Since the beginning of the year		
	May 2025	May 2024	Rate of Change	2025	2024	Rate of Change
Incoming Aircrafts	345	307	12.37%	1,559	1,405	10.96%
Outgoing Aircrafts	348	304	14.47%	1,556	1,399	11.22%
Total Aircrafts	693	611	13.42%	3,115	2,804	11.09%
Incoming Passengers	1,203	804	49.62%	5,053	3,863	30.80%
Outgoing Passengers	1,119	760	47.23%	4,432	3,971	11.60%
Total Passengers	2,322	1,564	48.46%	9,485	7,834	21.07%



Passengers and Aircrafts

Int'l Aviation Activity at Ben Gurion International Airport by Flight Type

Cargo Flights

	Current Month			Accumulated Since the beginning of the year		
	May 2025	May 2024	Rate of Change	2025	2024	Rate of Change
Incoming Aircrafts	391	352	11.07%	2,001	1,672	19.67%
Outgoing Aircrafts	363	324	12.03%	1,920	1,542	24.51%
Total Aircrafts	754	676	11.53%	3,921	3,214	21.99%
Incoming Passengers	48	33	45.45%	290	107	171.02%
Outgoing Passengers	37	17	117.64%	235	119	97.47%
Total Passengers	85	50	70.00%	525	226	132.30%

Other Flights

	Current Month			Accumulated Since the beginning of the year		
	May 2025	May 2024	Rate of Change	2025	2024	Rate of Change
Incoming Aircrafts	49	39	25.64%	198	192	3.12%
Outgoing Aircrafts	55	45	22.22%	217	204	6.37%
Total Aircrafts	104	84	23.80%	415	396	4.79%
Incoming Passengers	445	254	75.19%	1,376	1,276	7.83%
Outgoing Passengers	302	189	59.78%	1,181	1,080	9.35%
Total Passengers	747	443	68.62%	2,557	2,356	8.53%

Passengers and Aircrafts

Domestic Aviation Activity at Ben Gurion International Airport by Flight Type

Schedule Flights

	Current Month			Accumulated Since the beginning of the year		
	May 2025	May 2024	Rate of Change	2025	2024	Rate of Change
Aircrafts	511	457	11.81%	2,390	2,131	12.15%
Passengers	62,942	56,729	10.95%	289,180	270,644	6.84%

Private Flights

	Current Month			Accumulated Since the beginning of the year		
	May 2025	May 2024	Rate of Change	2025	2024	Rate of Change
Aircrafts	28	38	-26.31%	118	145	-18.62%
Passengers	12	20	-40.00%	93	92	1.08%

Other Flights

	Current Month			Accumulated Since the beginning of the year		
	May 2025	May 2024	Rate of Change	2025	2024	Rate of Change
Aircrafts	41	62	-33.87%	216	285	-24.21%
Passengers	685	307	123.12%	1,415	723	95.71%



International Activity

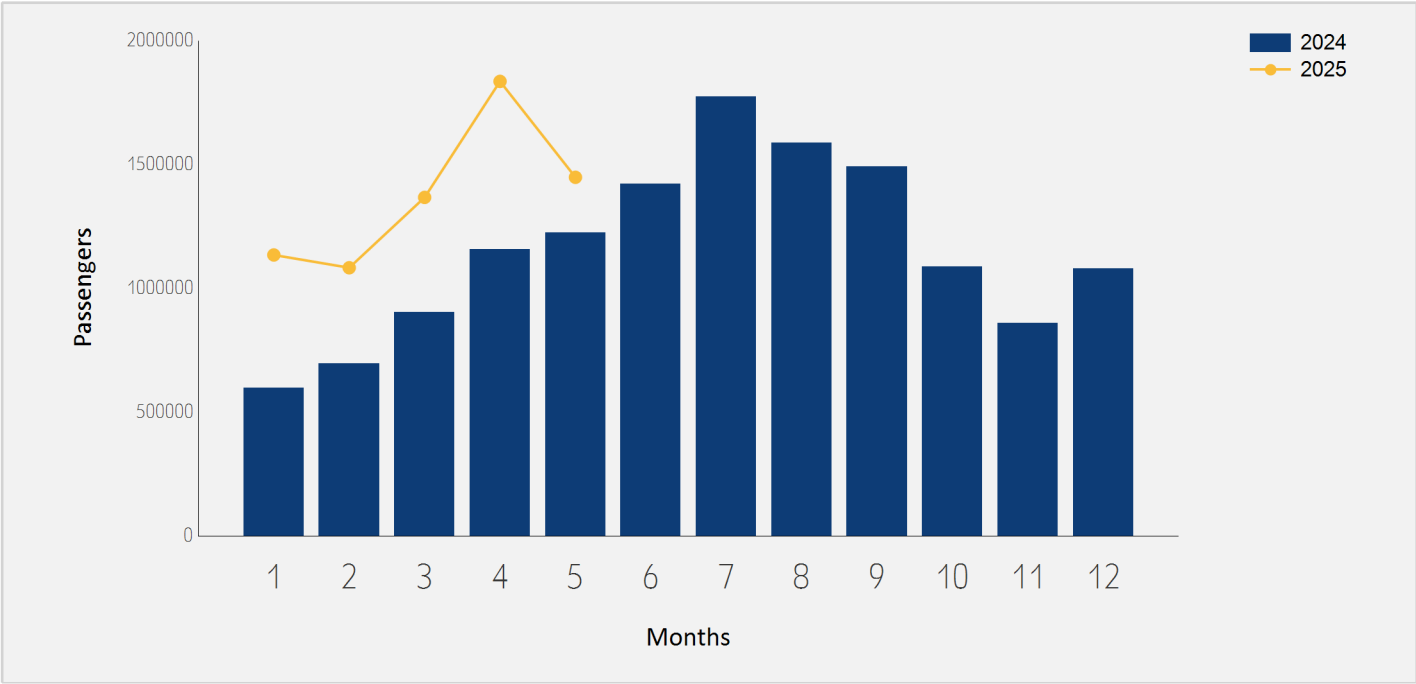




International Passenger Traffic

Distribution by Months

Months	2025	2024	Rate of Change
January	1,134,693	597,840	89.79%
February	1,083,136	696,681	55.47%
March	1,367,239	902,252	51.53%
April	1,835,848	1,156,564	58.73%
May	1,448,420	1,224,965	18.24%
Total	6,869,336	4,578,302	50.04%

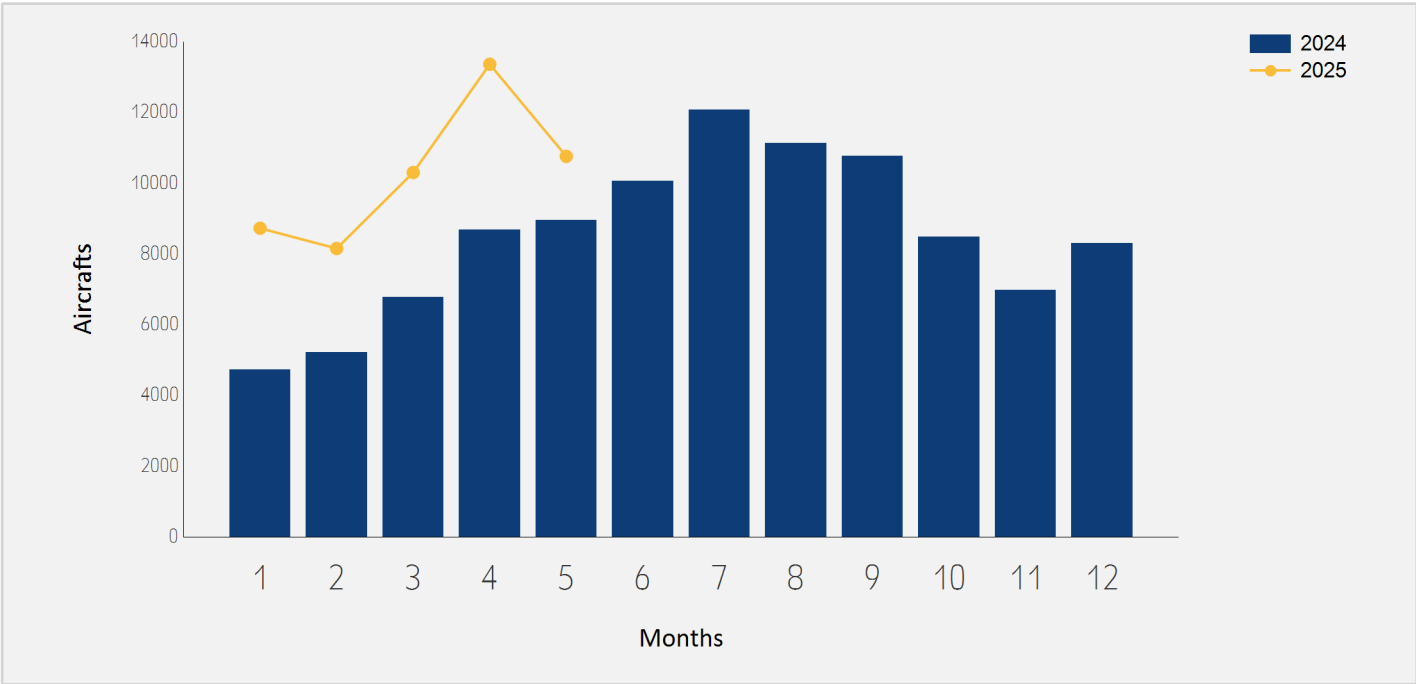




International Aircraft Traffic

Distribution by Months

Months	2025	2024	Rate of Change
January	8,726	4,732	84.40%
February	8,154	5,225	56.05%
March	10,302	6,781	51.92%
April	13,363	8,682	53.91%
May	10,759	8,960	20.07%
Total	51,304	34,380	49.22%



International Passenger Traffic

Distribution by Airline for May

		May 2025		May 2024		
Airline		Passengers	Rate of Total	Passengers	Rate of Total	Rate of Change
LY	EL AL ISRAEL AIRLINES	668,408	46.14%	580,540	47.39%	15.13%
6H	ISRAIR AIRLINES	191,725	13.23%	90,278	7.36%	112.37%
IZ	ARKIA ISRAELI AIRLINES	119,968	8.28%	66,115	5.39%	81.45%
W6	WIZZAIR	92,777	6.40%	85,073	6.94%	9.05%
FZ	FLYDUBAI	69,728	4.81%	46,526	3.79%	49.86%
BZ	BLUE BIRD AIRWAYS	55,253	3.81%	45,549	3.71%	21.30%
EY	ETIHAD AIRWAYS	30,607	2.11%	7,235	0.59%	
A3	AEGEAN AIRLINES	15,346	1.05%	30,945	2.52%	-50.40%
U8	TUS AIRWAYS	15,213	1.05%	16,110	1.31%	-5.56%
J2	AZERBAIJAN AIRLINES	14,664	1.01%	9,495	0.77%	54.43%
ET	ETHIOPIAN AIRLINES	13,016	0.89%	14,850	1.21%	-12.35%
A9	GEORGIAN AIRWAYS	12,275	0.84%	125	0.01%	
QS	SMARTWINGS	10,865	0.75%	8,994	0.73%	20.80%
FR	RYANAIR	10,745	0.74%			
UX	AIR EUROPA	10,713	0.73%	13,146	1.07%	-18.50%
WZ	RED WINGS AIRLINES	10,694	0.73%	8,880	0.72%	20.42%
DL	DELTA AIRLINES	7,590	0.52%			
CY	CYPRUS AIRWAYS	7,439	0.51%	1,837	0.14%	
H7	HISKY	7,409	0.51%	4,805	0.39%	54.19%
4D	FLYYO	6,615	0.45%			
A4	AZIMUTH AIRLINES	6,201	0.42%	4,605	0.37%	34.65%

International Passenger Traffic

Distribution by Airline for May

		May 2025		May 2024		
	Airline	Passengers	Rate of Total	Passengers	Rate of Total	Rate of Change
RO	TAROM - ROMANIAN AIR TRAN	5,912	0.40%	4,522	0.36%	30.73%
H4	HISKY EUROPE SRL	5,160	0.35%	1,717	0.14%	
LIL	FLY LILI	4,628	0.31%			
HU	HAINAN AIRLINES	4,546	0.31%	2,631	0.21%	72.78%
HY	UZBEKISTAN AIR	4,221	0.29%	3,420	0.27%	23.42%
AF	AIR FRANCE	4,107	0.28%	17,074	1.39%	-75.94%
UA	UNITED AIRLINES	3,984	0.27%			
LH	LUFTHANSA	3,853	0.26%	23,564	1.92%	-83.64%
5F	FLYONE	3,785	0.26%	1,992	0.16%	90.01%
LO	LOT POLISH AIRLINES	2,635	0.18%	10,613	0.86%	-75.17%
3E	ELECTRA AIRWAYS	2,582	0.17%	410	0.03%	
AZ	ITALIA TRASPORTO AEREO	2,170	0.14%	9,180	0.74%	-76.36%
BA	BRITISH AIRWAYS PLC	2,166	0.14%	5,809	0.47%	-62.71%
OS	AUSTRIAN AIRLINES	2,119	0.14%	24,093	1.96%	-91.20%
3F	FLYONE ARMENIA LLC	1,836	0.12%			
NO	NEOS	1,833	0.12%	1,226	0.10%	49.51%
FB	BULGARIA AIR	1,688	0.11%	1,799	0.14%	-6.17%
HH	QANOT SHARQ	1,672	0.11%	2,003	0.16%	-16.52%
9S	SAM AIR	1,216	0.08%			
TO	TRANSAVIA FRANCE	1,105	0.07%	12,691	1.03%	-91.29%
2D	EASTERN AIR LINES INC.	1,089	0.07%			



International Passenger Traffic

Distribution by Airline for May

		May 2025		May 2024		
Airline		Passengers	Rate of Total	Passengers	Rate of Total	Rate of Change
I2	IBERIA EXPRESS	1,070	0.07%	7,915	0.64%	-86.48%
XR	CORENDON EUROPE	928	0.06%	13,917	1.13%	-93.33%
LX	SWISS INT'L AIRLINES	735	0.05%	11,981	0.97%	-93.86%
SN	BRUSSELS AIRLINES	534	0.03%	4,282	0.34%	-87.52%
EW	EUROWINGS	501	0.03%	2,571	0.20%	-80.51%
C3	TRADE AIR	497	0.03%			
AI	AIR INDIA	394	0.02%	3,482	0.28%	-88.68%
H3	HELLO JETS	355	0.02%			
BT	AIR BALTIC	317	0.02%	1,648	0.13%	-80.76%
	OTHERS	3,531	0.24%	21,317	1.74%	-83.43%
TOTAL		1,448,420		1,224,965		18.24%



Int'l Accumulated Passenger Traffic

Distribution by Airline

		Accumulated 2025		Accumulated 2024		
Airline		Passengers	Rate of Total	Passengers	Rate of Total	Rate of Change
LY	EL AL ISRAEL AIRLINES	2,870,054	41.78%	2,444,500	53.39%	17.40%
6H	ISR AIR AIRLINES	720,624	10.49%	366,957	8.01%	96.37%
IZ	ARKIA ISRAELI AIRLINES	515,956	7.51%	264,143	5.76%	95.33%
W6	WIZZAIR	487,725	7.10%	186,707	4.07%	161.22%
FZ	FLYDUBAI	328,239	4.77%	179,913	3.92%	82.44%
BZ	BLUE BIRD AIRWAYS	243,056	3.53%	150,213	3.28%	61.80%
A3	AEGEAN AIRLINES	138,769	2.02%	88,849	1.94%	56.18%
EY	ETIHAD AIRWAYS	137,114	1.99%	26,809	0.58%	
FR	RYANAIR	118,500	1.72%	11,552	0.25%	
LH	LUFTHANSA	108,449	1.57%	75,447	1.64%	43.74%
ET	ETHIOPIAN AIRLINES	78,258	1.13%	61,555	1.34%	27.13%
LO	LOT POLISH AIRLINES	77,955	1.13%	40,243	0.87%	93.71%
J2	AZERBAIJAN AIRLINES	71,176	1.03%	19,932	0.43%	
U8	TUS AIRWAYS	69,822	1.01%	44,940	0.98%	55.36%
UX	AIR EUROPA	64,256	0.93%	33,847	0.73%	89.84%
QS	SMARTWINGS	57,138	0.83%	34,284	0.74%	66.66%
OS	AUSTRIAN AIRLINES	55,994	0.81%	77,673	1.69%	-27.91%
AF	AIR FRANCE	54,756	0.79%	56,084	1.22%	-2.36%
AZ	ITALIA TRASPORTO AEREO	54,200	0.78%	17,892	0.39%	
WZ	RED WINGS AIRLINES	49,804	0.72%	34,622	0.75%	43.85%
UA	UNITED AIRLINES	47,473	0.69%	23,256	0.50%	104.13%

Int'l Accumulated Passenger Traffic

Distribution by Airline

		Accumulated 2025		Accumulated 2024		
Airline		Passengers	Rate of Total	Passengers	Rate of Total	Rate of Change
TO	TRANSAVIA FRANCE	35,228	0.51%	34,695	0.75%	1.53%
A9	GEORGIAN AIRWAYS	34,884	0.50%	125		
LX	SWISS INT'L AIRLINES	30,526	0.44%	45,485	0.99%	-32.88%
A4	AZIMUTH AIRLINES	30,237	0.44%	26,195	0.57%	15.43%
H7	HISKY	28,810	0.41%	19,345	0.42%	48.92%
LIL	FLY LILI	23,799	0.34%			
RO	TAROM - ROMANIAN AIR TRAN	23,666	0.34%	15,579	0.34%	51.90%
H4	HISKY EUROPE SRL	23,345	0.33%	5,723	0.12%	
CY	CYPRUS AIRWAYS	22,040	0.32%	7,204	0.15%	
DL	DELTA AIRLINES	21,967	0.31%			
SN	BRUSSELS AIRLINES	19,833	0.28%	8,591	0.18%	130.85%
AI	AIR INDIA	19,081	0.27%	13,095	0.28%	45.71%
4D	FLYYO	18,383	0.26%			
5F	FLYONE	17,215	0.25%	7,060	0.15%	143.83%
HY	UZBEKISTAN AIR	17,022	0.24%	13,511	0.29%	25.98%
BA	BRITISH AIRWAYS PLC	15,222	0.22%	11,738	0.25%	29.68%
HU	HAINAN AIRLINES	14,425	0.20%	10,237	0.22%	40.91%
EW	EUROWINGS	12,573	0.18%	7,273	0.15%	72.87%
I2	IBERIA EXPRESS	12,489	0.18%	13,571	0.29%	-7.97%
HM	AIR SEYCHELLES	11,647	0.16%	4,827	0.10%	141.28%
FB	BULGARIA AIR	10,537	0.15%	2,968	0.06%	

Int'l Accumulated Passenger Traffic

Distribution by Airline

		Accumulated 2025		Accumulated 2024		
Airline		Passengers	Rate of Total	Passengers	Rate of Total	Rate of Change
3E	ELECTRA AIRWAYS	7,046	0.10%	769	0.01%	
NO	NEOS	6,145	0.08%	6,827	0.14%	-9.98%
3F	FLYONE ARMENIA LLC	5,539	0.08%			
HH	QANOT SHARQ	5,124	0.07%	2,003	0.04%	155.81%
XR	CORENDON EUROPE	3,504	0.05%	29,516	0.64%	-88.12%
BT	AIR BALTIC	3,096	0.04%	1,648	0.03%	87.86%
AP	ALBASTAR.ES	2,022	0.02%	1,199	0.02%	68.64%
	OTHERS	44,613	0.64%	49,700	1.08%	-10.23%
TOTAL		6,869,336		4,578,302		50.04%



International Passenger Traffic

Distribution by Israeli Airlines for May

May 2025				May 2024		
Airlines		Passengers	Rate of Total	Passengers	Rate of Total	Rate of Change
LY	EL AL ISRAEL AIRLINES	668,408	46.14%	580,540	47.39%	15.13%
6H	ISRAIR AIRLINES	191,725	13.23%	90,278	7.36%	112.37%
IZ	ARKIA ISRAELI AIRLINES	119,968	8.28%	66,115	5.39%	81.45%
	OTHERS	985	0.06%	1,964	0.16%	-49.84%
TOTAL		981,086	67.73%	738,897	60.31%	32.77%

Int'l Accumulated Passenger Traffic

Distribution by Israeli Airlines

Accumulated 2025				Accumulated 2024		
Airlines		Passengers	Rate of Total	Passengers	Rate of Total	Rate of Change
LY	EL AL ISRAEL AIRLINES	2,870,054	41.78%	2,444,500	53.39%	17.40%
6H	ISRAIR AIRLINES	720,624	10.49%	366,957	8.01%	96.37%
IZ	ARKIA ISRAELI AIRLINES	515,956	7.51%	264,143	5.76%	95.33%
	OTHERS	24,809	0.36%	6,009	0.13%	
TOTAL		4,131,443	60.14%	3,081,609	67.30%	34.06%



International Passenger Traffic

Distribution by Countries for May

Countries	May 2025		May 2024		
	Passengers	Rate of Total	Passengers	Total of Rate	Rate of Change
GREECE	193,287	13.34%	141,498	11.55%	36.60%
UNITED STATES	135,107	9.32%	109,831	8.96%	23.01%
UNITED ARAB EMIRATES	118,703	8.19%	69,345	5.66%	71.17%
ITALY	111,350	7.68%	76,127	6.21%	46.26%
CYPRUS	99,506	6.86%	77,465	6.32%	28.45%
FRANCE	81,057	5.59%	91,184	7.44%	-11.10%
GEORGIA	73,934	5.10%	60,515	4.94%	22.17%
HUNGARY	62,943	4.34%	44,749	3.65%	40.65%
SPAIN	62,120	4.28%	63,444	5.17%	-2.08%
UNITED KINGDOM	59,276	4.09%	64,522	5.26%	-8.13%
GERMANY	54,774	3.78%	60,885	4.97%	-10.03%
CZECH REPUBLIC	43,642	3.01%	34,447	2.81%	26.69%
ROMANIA	42,605	2.94%	36,194	2.95%	17.71%
THAILAND	30,950	2.13%	26,653	2.17%	16.12%
POLAND	30,425	2.10%	38,638	3.15%	-21.25%
MONTENEGRO	28,289	1.95%	13,661	1.11%	107.07%
BULGARIA	26,764	1.84%	18,468	1.50%	44.92%
AUSTRIA	24,645	1.70%	39,578	3.23%	-37.73%
RUSSIAN FEDERATION	23,717	1.63%	22,340	1.82%	6.16%
NETHERLANDS	23,352	1.61%	27,962	2.28%	-16.48%
AZERBAIJAN	18,720	1.29%	12,594	1.02%	48.64%
SWITZERLAND	16,514	1.14%	23,777	1.94%	-30.54%

International Passenger Traffic

Distribution by Countries for May

Countries	May 2025		May 2024		
	Passengers	Rate of Total	Passengers	Total of Rate	Rate of Change
MOLDOVA	16,185	1.11%	16,122	1.31%	0.39%
ETHIOPIA	13,016	0.89%	14,850	1.21%	-12.35%
PORTUGAL	11,999	0.82%	8,945	0.73%	34.14%
ALBANIA	8,032	0.55%	14		
UZBEKISTAN	7,243	0.50%	3,887	0.31%	86.33%
JAPAN	6,134	0.42%	5,332	0.43%	15.04%
SERBIA	5,929	0.40%	2,706	0.22%	119.10%
LITHUANIA	5,457	0.37%	2,812	0.22%	94.06%
CHINA	4,568	0.31%	2,656	0.21%	71.98%
MALTA	1,844	0.12%	11		
ARMENIA	1,836	0.12%			
BELGIUM	1,153	0.07%	4,314	0.35%	-73.27%
CROATIA	832	0.05%	184	0.01%	
SEYCHELLES	628	0.04%	1,446	0.11%	-56.56%
SLOVENIA	432	0.02%	16		
INDIA	396	0.02%	5,029	0.41%	-92.12%
LATVIA	317	0.02%	1,648	0.13%	-80.76%
OTHERS	739	0.05%	1,116	0.09%	-33.78%
TOTAL	1,448,420		1,224,965		18.24%



Int'l Accumulated Passenger Traffic

Distribution by Countries

Countries	Accumulated 2025		Accumulated 2024		
	Passengers	Rate of Total	Passengers	Rate of Total	Rate of Change
GREECE	672,069	9.78%	437,890	9.56%	53.47%
UNITED ARAB EMIRATES	660,705	9.61%	298,448	6.51%	121.38%
UNITED STATES	595,658	8.67%	514,925	11.24%	15.67%
ITALY	532,881	7.75%	259,487	5.66%	105.35%
FRANCE	428,055	6.23%	335,173	7.32%	27.71%
CYPRUS	377,073	5.48%	257,698	5.62%	46.32%
GERMANY	346,096	5.03%	238,341	5.20%	45.21%
GEORGIA	339,153	4.93%	220,767	4.82%	53.62%
UNITED KINGDOM	302,205	4.39%	231,376	5.05%	30.61%
HUNGARY	296,340	4.31%	146,834	3.20%	101.81%
SPAIN	291,431	4.24%	211,529	4.62%	37.77%
POLAND	241,193	3.51%	131,614	2.87%	83.25%
ROMANIA	204,864	2.98%	133,502	2.91%	53.45%
CZECH REPUBLIC	193,445	2.81%	142,390	3.11%	35.85%
AUSTRIA	185,442	2.69%	138,141	3.01%	34.24%
THAILAND	171,517	2.49%	141,564	3.09%	21.15%
BULGARIA	171,086	2.49%	87,853	1.91%	94.74%
SWITZERLAND	129,196	1.88%	130,592	2.85%	-1.06%
NETHERLANDS	96,052	1.39%	106,741	2.33%	-10.01%
RUSSIAN FEDERATION	87,140	1.26%	101,508	2.21%	-14.15%
AZERBAIJAN	78,453	1.14%	25,652	0.56%	
ETHIOPIA	76,843	1.11%	61,717	1.34%	24.50%



Int'l Accumulated Passenger Traffic

Distribution by Countries

Countries	Accumulated 2025		Accumulated 2024		
	Passengers	Rate of Total	Passengers	Rate of Total	Rate of Change
MOLDOVA	70,316	1.02%	61,936	1.35%	13.53%
MONTENEGRO	53,591	0.78%	20,159	0.44%	165.84%
PORTUGAL	46,345	0.67%	34,031	0.74%	36.18%
BELGIUM	26,252	0.38%	8,881	0.19%	195.59%
JAPAN	25,516	0.37%	15,662	0.34%	62.91%
UZBEKISTAN	24,207	0.35%	13,978	0.30%	73.17%
SERBIA	23,504	0.34%	9,885	0.21%	137.77%
LITHUANIA	22,599	0.32%	6,394	0.13%	
INDIA	19,382	0.28%	14,646	0.31%	32.33%
ALBANIA	14,723	0.21%	639	0.01%	
CHINA	14,589	0.21%	10,302	0.22%	41.61%
SEYCHELLES	13,152	0.19%	7,136	0.15%	84.30%
FINLAND	10,616	0.15%	4,929	0.10%	115.37%
MALTA	6,474	0.09%	38		
TANZANIA	5,656	0.08%	1,298	0.02%	
ARMENIA	5,549	0.08%			
LATVIA	3,145	0.04%	1,654	0.03%	90.14%
CROATIA	2,036	0.02%	714	0.01%	185.15%
OTHERS	4,787	0.06%	12,278	0.26%	-61.01%
TOTAL	6,869,336		4,578,302		50.04%

International Passenger Traffic

Distribution by First Destination for May

Destination	May 2025		May 2024		
	Passengers	Rate of Total	Passengers	Rate of Total	Rate of Change
ATHENS	105,942	7.31%	85,558	6.98%	23.82%
LARNACA	88,399	6.10%	63,409	5.17%	39.41%
DUBAI	83,739	5.78%	57,539	4.69%	45.53%
NEW YORK - J.F.KENNEDY	63,524	4.38%	48,292	3.94%	31.54%
PARIS-CHARLES DE GAULLE	63,037	4.35%	66,657	5.44%	-5.43%
BUDAPEST	61,152	4.22%	42,964	3.50%	42.33%
ROME - FIUMICINO	57,346	3.95%	41,196	3.36%	39.20%
PRAGUE-RUZYNE	43,615	3.01%	34,443	2.81%	26.62%
BUCHAREST - OTOPENI	41,168	2.84%	36,170	2.95%	13.81%
BATUMI	37,952	2.62%	31,316	2.55%	21.19%
TBILISI	35,982	2.48%	29,187	2.38%	23.28%
ABU DHABI	34,747	2.39%	11,744	0.95%	195.87%
BARCELONA	32,091	2.21%	26,124	2.13%	22.84%
LUTON	31,306	2.16%	23,137	1.88%	35.30%
MILAN-MALPENSA	30,570	2.11%	24,204	1.97%	26.30%
NEW YORK - NEWARK	29,643	2.04%	26,419	2.15%	12.20%
MADRID	28,904	1.99%	37,256	3.04%	-22.41%
RHODES-PARADISI	28,829	1.99%	25,873	2.11%	11.42%
TIVAT	28,191	1.94%	13,661	1.11%	106.36%
LONDON - HEATHROW	27,893	1.92%	36,470	2.97%	-23.51%
BERLIN BRANDENBURG INTL	27,466	1.89%	16,043	1.30%	71.20%
VIENNA	24,460	1.68%	39,578	3.23%	-38.19%

International Passenger Traffic

Distribution by First Destination for May

Destination	May 2025		May 2024		
	Passengers	Rate of Total	Passengers	Rate of Total	Rate of Change
BANGKOK INTL.-SUVARNA BHUM	23,597	1.62%	20,589	1.68%	14.60%
AMSTERDAM	23,352	1.61%	27,962	2.28%	-16.48%
HERAKLION	23,035	1.59%	17,452	1.42%	31.99%
SOFIA	19,689	1.35%	14,760	1.20%	33.39%
THESSALONIKI	19,259	1.32%	11,297	0.92%	70.47%
BAKU HEYDAR ALIYEV INT'L	18,720	1.29%	12,594	1.02%	48.64%
WARSAW	18,425	1.27%	24,708	2.01%	-25.42%
LOS ANGELES	18,267	1.26%	14,171	1.15%	28.90%
ZURICH	16,470	1.13%	23,757	1.93%	-30.67%
CHISINAU	16,185	1.11%	16,122	1.31%	0.39%
MUNICH	13,890	0.95%	20,798	1.69%	-33.21%
ADDIS ABABA	13,016	0.89%	14,850	1.21%	-12.35%
MOSCOW-DOMODEDOVO	12,568	0.86%	14,823	1.21%	-15.21%
FRANKFURT	12,015	0.82%	21,258	1.73%	-43.48%
KRAKOW	11,248	0.77%	9,987	0.81%	12.62%
PAPHOS	11,094	0.76%	14,051	1.14%	-21.04%
BOSTON-LOGAN INT	10,220	0.70%	6,278	0.51%	62.79%
MIAMI INTERNATIONAL	9,630	0.66%	11,748	0.95%	-18.02%
LISBON	8,927	0.61%	8,945	0.73%	-0.20%
NICE	8,270	0.57%	5,644	0.46%	46.52%
SOCHI	8,032	0.55%	7,008	0.57%	14.61%
TIRANA	8,032	0.55%	14		

International Passenger Traffic

Distribution by First Destination for May

Destination	May 2025		May 2024		
	Passengers	Rate of Total	Passengers	Rate of Total	Rate of Change
PHUKET	7,353	0.50%	6,064	0.49%	21.25%
NAPLES-CAPODICHINO	7,232	0.49%	2,188	0.17%	
MARSEILLE	6,834	0.47%	6,143	0.50%	11.24%
VENICE	6,797	0.46%	5,776	0.47%	17.67%
TOKYO INTL.-NARITA	6,134	0.42%	5,332	0.43%	15.04%
BELGRADE	5,929	0.40%	2,706	0.22%	119.10%
VARNA	5,798	0.40%	3,522	0.28%	64.62%
VILNIUS INTL	5,290	0.36%	2,812	0.22%	88.12%
SANTORINI	4,254	0.29%	189	0.01%	
TASHKENT	4,249	0.29%	2,902	0.23%	46.41%
FORT LAUDERDALE	3,732	0.25%	2,841	0.23%	31.36%
KEFALLINIA	3,313	0.22%			
CORFU	3,308	0.22%	594	0.04%	
CATANIA FONTANAROSSA	3,246	0.22%	2,373	0.19%	36.78%
MIKONOS	3,188	0.22%	24		
PORTO	3,069	0.21%			
SAMARKAND	2,994	0.20%	985	0.08%	
SHENZHEN BAOAN INT.	2,935	0.20%	2,631	0.21%	11.55%
MOSCOW-ZHUKOVSKY INTL AIR	2,732	0.18%			
VILAFRANCA-VERONA	2,706	0.18%	73		
BARI -PALESE MACCHIE	1,966	0.13%			
MALTA	1,844	0.12%	11		

International Passenger Traffic

Distribution by First Destination for May

Destination	May 2025		May 2024		
	Passengers	Rate of Total	Passengers	Rate of Total	Rate of Change
YEREVAN	1,836	0.12%			
DEBRECEN	1,791	0.12%	1,785	0.14%	0.33%
LYON - SATOLAS	1,764	0.12%			
BEIJING	1,611	0.11%	1		
BURGAS	1,277	0.08%	186	0.01%	
IASI	1,230	0.08%			
PARIS-ORLY	1,105	0.07%	12,691	1.03%	-91.29%
KHANIA-SOUDABAY	984	0.06%			
MAHE SEYCHELLES INTL	628	0.04%	1,446	0.11%	-56.56%
KATOWICE	562	0.03%	3,703	0.30%	-84.82%
PALMA DE MALLORCA	560	0.03%	5		
BRUSSELS - CHARLEROI	560	0.03%			
BRUSSELS	543	0.03%	4,290	0.35%	-87.34%
BADEN BADEN	535	0.03%			
MALAGA	519	0.03%	12		
PREVEZA	435	0.03%	317	0.02%	37.22%
LJUBLJANA	432	0.02%	16		
ZAGREB	401	0.02%	182	0.01%	120.32%
DELHI	396	0.02%	5,028	0.41%	-92.12%
DUSSELDORF	391	0.02%	2,768	0.22%	-85.87%
BERGAMO	385	0.02%			
MOSCOW-VNUKOVO	385	0.02%	58		

International Passenger Traffic

Distribution by First Destination for May

Destination	May 2025		May 2024		
	Passengers	Rate of Total	Passengers	Rate of Total	Rate of Change
RIJEKA	358	0.02%			
KOS	341	0.02%	6		
BOLOGNA-BORGIO PANIGALE	340	0.02%	3		
TREVISO	326	0.02%			
RIGA	317	0.02%	1,648	0.13%	-80.76%
TURIN	303	0.02%			
MEMMINGEN	275	0.01%			
OTHERS	3,030	0.20%	7,598	0.62%	-60.12%
TOTAL	1,448,420		1,224,965		18.24%

Int'l Accumulated Passenger Traffic

Distribution by First Destination

Destination	Accumulated 2025		Accumulated 2024		
	Passengers	Rate of Total	Passengers	Rate of Total	Rate of Change
DUBAI	498,312	7.25%	258,221	5.64%	92.97%
ATHENS	493,909	7.19%	323,465	7.06%	52.69%
LARNACA	326,792	4.75%	234,108	5.11%	39.59%
PARIS-CHARLES DE GAULLE	304,347	4.43%	256,790	5.60%	18.51%
ROME - FIUMICINO	296,155	4.31%	132,278	2.88%	123.88%
BUDAPEST	294,078	4.28%	145,049	3.16%	102.74%
NEW YORK - J.F.KENNEDY	242,468	3.52%	206,826	4.51%	17.23%
BUCHAREST - OTOPENI	199,071	2.89%	133,459	2.91%	49.16%
PRAGUE-RUZYNE	193,410	2.81%	142,357	3.10%	35.86%
TBILISI	185,963	2.70%	113,771	2.48%	63.45%
VIENNA	177,257	2.58%	135,405	2.95%	30.90%
NEW YORK - NEWARK	174,801	2.54%	153,215	3.34%	14.08%
LUTON	163,199	2.37%	73,746	1.61%	121.29%
ABU DHABI	161,522	2.35%	38,867	0.84%	
WARSAW	158,554	2.30%	89,399	1.95%	77.35%
MADRID	157,065	2.28%	115,536	2.52%	35.94%
MILAN-MALPENSA	156,764	2.28%	98,791	2.15%	58.68%
BATUMI	152,583	2.22%	106,679	2.33%	43.03%
SOFIA	146,639	2.13%	70,982	1.55%	106.58%
LONDON - HEATHROW	138,054	2.00%	147,568	3.22%	-6.44%
BANGKOK INTL.-SUARNABHUM	136,044	1.98%	117,056	2.55%	16.22%
BARCELONA	130,792	1.90%	95,648	2.08%	36.74%

Int'l Accumulated Passenger Traffic

Distribution by First Destination

Destination	Accumulated 2025		Accumulated 2024		
	Passengers	Rate of Total	Passengers	Rate of Total	Rate of Change
BERLIN BRANDENBURG INTL	115,161	1.67%	65,049	1.42%	77.03%
MUNICH	107,566	1.56%	74,835	1.63%	43.73%
FRANKFURT	104,035	1.51%	86,800	1.89%	19.85%
ZURICH	98,245	1.43%	98,384	2.14%	-0.14%
AMSTERDAM	96,051	1.39%	106,691	2.33%	-9.97%
BAKU HEYDAR ALIYEV INT'L	78,453	1.14%	25,652	0.56%	
ADDIS ABABA	76,843	1.11%	61,717	1.34%	24.50%
LOS ANGELES	76,326	1.11%	60,173	1.31%	26.84%
CHISINAU	70,316	1.02%	61,936	1.35%	13.53%
KRAKOW	62,224	0.90%	32,093	0.70%	93.88%
RHODES-PARADISI	56,621	0.82%	50,280	1.09%	12.61%
HERAKLION	53,140	0.77%	39,464	0.86%	34.65%
PAPHOS	50,259	0.73%	23,473	0.51%	114.11%
THESSALONIKI	49,518	0.72%	20,966	0.45%	136.18%
MIAMI INTERNATIONAL	46,641	0.67%	61,364	1.34%	-23.99%
TIVAT	45,571	0.66%	19,633	0.42%	132.11%
LISBON	40,064	0.58%	34,024	0.74%	17.75%
GRENOBLE-SAUNT GEOIRS	38,191	0.55%	18,425	0.40%	107.27%
SOCHI	37,712	0.54%	40,250	0.87%	-6.30%
PHUKET	35,430	0.51%	24,472	0.53%	44.77%
BOSTON-LOGAN INT	35,361	0.51%	28,253	0.61%	25.15%
PARIS-ORLY	35,228	0.51%	34,856	0.76%	1.06%

Int'l Accumulated Passenger Traffic

Distribution by First Destination

Destination	Accumulated 2025		Accumulated 2024		
	Passengers	Rate of Total	Passengers	Rate of Total	Rate of Change
GENEVA	30,807	0.44%	31,558	0.68%	-2.37%
MOSCOW-DOMODEDOVO	28,226	0.41%	59,313	1.29%	-52.41%
TOKYO INTL.-NARITA	25,512	0.37%	15,662	0.34%	62.89%
VENICE	23,596	0.34%	10,452	0.22%	125.75%
BELGRADE	23,504	0.34%	9,885	0.21%	137.77%
VILNIUS INTL	22,432	0.32%	6,218	0.13%	
MOSCOW-ZHUKOVSKY INTL AIR	20,540	0.29%	224		
LYON - SATOLAS	20,474	0.29%	1,047	0.02%	
BRUSSELS	19,877	0.28%	8,722	0.19%	127.89%
VARNA	19,717	0.28%	15,791	0.34%	24.86%
DELHI	19,342	0.28%	14,641	0.31%	32.10%
FORT LAUDERDALE	18,814	0.27%	4,269	0.09%	
TASHKENT	17,463	0.25%	12,372	0.27%	41.14%
NICE	15,540	0.22%	9,785	0.21%	58.81%
NAPLES-CAPODICHINO	15,335	0.22%	3,997	0.08%	
TIRANA	14,723	0.21%	639	0.01%	
MARSEILLE	13,784	0.20%	13,823	0.30%	-0.28%
MAHE SEYCHELLES INTL	13,152	0.19%	7,136	0.15%	84.30%
VILLAFRANCA-VERONA	11,861	0.17%	4,063	0.08%	191.92%
SHENZHEN BAOAN INT.	11,823	0.17%	10,237	0.22%	15.49%
KATOWICE	11,577	0.16%	4,785	0.10%	141.94%
ROVANIEMI	10,586	0.15%	4,924	0.10%	114.98%

Int'l Accumulated Passenger Traffic

Distribution by First Destination

Destination	Accumulated 2025		Accumulated 2024		
	Passengers	Rate of Total	Passengers	Rate of Total	Rate of Change
BERGAMO	8,146	0.11%	3,818	0.08%	113.35%
DUSSELDORF	8,037	0.11%	7,470	0.16%	7.59%
PODGORICA	8,020	0.11%	526	0.01%	
SAMARKAND	6,744	0.09%	1,606	0.03%	
MALTA	6,474	0.09%	38		
PORTO	6,260	0.09%	5		
BRUSSELS - CHARLEROI	6,137	0.08%			
CATANIA FONTANAROSSA	6,053	0.08%	4,891	0.10%	23.75%
YEREVAN	5,549	0.08%			
BARI -PALESE MACCHIE	4,899	0.07%			
IASI	4,738	0.06%			
KEFALLINIA	4,651	0.06%	2		
HAMBURG	4,549	0.06%			
MIKONOS	4,379	0.06%	48		
SANTORINI	4,254	0.06%	716	0.01%	
ZANZIBAR	4,208	0.06%	672	0.01%	
SALZBURG	4,189	0.06%	25		
INNSBRUCK	3,992	0.05%	2,711	0.05%	47.25%
BOLOGNA-BORGIO PANIGALE	3,658	0.05%	9		
PLOVDIV	3,453	0.05%			
BADEN BADEN	3,444	0.05%	2,049	0.04%	68.08%
CORFU	3,339	0.04%	617	0.01%	

Int'l Accumulated Passenger Traffic

Distribution by First Destination

Destination	Accumulated 2025		Accumulated 2024		
	Passengers	Rate of Total	Passengers	Rate of Total	Rate of Change
TURIN	3,257	0.04%			
RZESZOW-JASIONKA	3,194	0.04%	5,246	0.11%	-39.11%
RIGA	3,145	0.04%	1,654	0.03%	90.14%
MEMMINGEN	2,980	0.04%	2,014	0.04%	47.96%
POZNAN	2,717	0.03%			
BEIJING	2,602	0.03%	1		
WARSAW- MODLIN	2,395	0.03%	91		
DEBRECEN	2,262	0.03%	1,785	0.03%	26.72%
OTHERS	26,191	0.38%	34,759	0.75%	-24.64%
TOTAL	6,869,336		4,578,302		50.04%

Cargo Activity





Cargo Handling

Distribution by Transporter

Transporter	May 2025 (Ton)	May 2024 (Ton)	Rate of Change
Cargo on Passenger Aircrafts - Incoming	3,974	4,245	-6.38%
Cargo on Passenger Aircrafts - Outgoing	4,076	4,123	-1.13%
Total Cargo on Passenger Aircrafts	8,050	8,368	-3.80%
Cargo on Cargo Aircrafts - Incoming	16,729	14,130	18.39%
Cargo on Cargo Aircrafts - Outgoing	6,601	5,728	15.24%
Total Cargo on Cargo Aircrafts	23,330	19,858	17.48%
Total	31,380	28,226	11.17%

Distribution by Months

Month	2025 (ton)			2024 (ton)			Rate of Change
	Cargo	Mail	Total	Cargo	Mail	Total	
January	28,679	373	29,052	26,619	580	27,200	6.80%
February	28,020	338	28,358	26,737	441	27,178	4.34%
March	34,497	432	34,929	29,890	402	30,291	15.31%
April	30,335	419	30,754	27,296	427	27,723	10.93%
May	30,994	385	31,380	27,702	524	28,226	11.17%
Total	152,525	1,947	154,473	138,244	2,374	140,618	9.85%





Cargo Handling on Passenger Aircrafts

Distribution by Airline for May

May 2025					May 2024					
Airline		Incoming Cargo (Ton)	Outgoing Cargo (Ton)	Cargo (Ton)	Rate of Total	Incoming Cargo (Ton)	Outgoing Cargo (Ton)	Cargo (Ton)	Rate of Total	Rate of Change
LY	EL AL ISRAEL AIRLINES	2,280	3,094	5,374	66.75%	2,526	3,002	5,528	66.06%	-2.78%
HU	HAINAN AIRLINES	529	219	748	9.29%	252	131	383	4.57%	95.30%
EY	ETIHAD AIRWAYS	323	112	435	5.40%	20	13	33	0.39%	
UX	AIR EUROPA	60	143	203	2.52%	234	111	345	4.12%	-41.15%
FZ	FLYDUBAI	108	43	152	1.88%	138	19	156	1.86%	-2.56%
J2	AZERBAIJAN AIRLINES	106	41	146	1.81%	33	4	37	0.44%	
AF	AIR FRANCE	62	41	104	1.29%	363	324	686	8.19%	-84.83%
IZ	ARKIA ISRAELI AIRLINES	41	59	100	1.24%					
UA	UNITED AIRLINES	61	35	96	1.19%					
HY	UZBEKISTAN AIR	68	26	94	1.16%	24	12	36	0.43%	161.11%
DL	DELTA AIRLINES	48	43	91	1.13%					
5Y	ATLAS AIR Inc.		91	91	1.13%					
FX	FEDERAL EXPRESS	48		48	0.59%	27	42	69	0.82%	-30.43%
ET	ETHIOPIAN AIRLINES	37	10	47	0.58%	23	9	32	0.38%	46.87%
RO	TAROM - ROMANIAN AIR TRAN	35	7	42	0.52%	13	4	17	0.20%	147.05%
LX	SWISS INT'L AIRLINES	21	18	40	0.49%	350	291	641	7.66%	-93.75%
NCR	NATIONAL AIRLINES		34	34	0.42%		12	12	0.14%	183.33%
H4	HISKY EUROPE SRL	31	3	33	0.40%	4		4	0.04%	
QS	SMARTWINGS	24	4	27	0.33%	31	2	33	0.39%	-18.18%
6H	ISRAIR AIRLINES	18	4	23	0.28%		8	8	0.09%	187.50%
U8	TUS AIRWAYS	20	1	20	0.24%	25	4	30	0.35%	-33.33%
H7	HISKY	13	5	18	0.22%	7	4	11	0.13%	63.63%



Cargo Handling on Passenger Aircrafts

Distribution by Airline for May

May 2025					May 2024				
Airline	Incoming Cargo (Ton)	Outgoing Cargo (Ton)	Cargo (Ton)	Rate of Total	Incoming Cargo (Ton)	Outgoing Cargo (Ton)	Cargo (Ton)	Rate of Total	Rate of Change
C6 CENTRUM AIR		14	14	0.17%					
WZ RED WINGS AIRLINES	6	6	13	0.16%	5	5	10	0.11%	30.00%
A3 AEGEAN AIRLINES	11	1	12	0.14%	71	13	84	1.00%	-85.71%
A4 AZIMUTH AIRLINES	8	1	8	0.09%	11	2	13	0.15%	-38.46%
AI AIR INDIA		6	6	0.07%	11	48	59	0.70%	-89.83%
LO LOT POLISH AIRLINES	4	1	5	0.06%	15	11	26	0.31%	-80.76%
LH LUFTHANSA	3	1	4	0.04%	16	7	22	0.26%	-81.81%
AZ ITALIA TRASPORTO AEREO	2	1	3	0.03%	2	9	11	0.13%	-72.72%
W6 WIZZAIR	2	1	3	0.03%					
FP FLYPRO		2	2	0.02%					
8V ASTRAL AVIATION		2	2	0.02%					
GH GEORGIAN AIRLINES		2	2	0.02%					
5F FLYONE	2		2	0.02%	4	1	5	0.05%	-60.00%
OS AUSTRIAN AIRLINES	1		2	0.02%	12	4	16	0.19%	-87.50%
FB BULGARIA AIR	2		2	0.02%					
3F FLYONE ARMENIA LLC		1	1	0.01%					
BT AIR BALTIC	1		1	0.01%	7		7	0.08%	-85.71%
HH QANOT SHARQ	1		1	0.01%					
CY CYPRUS AIRWAYS	1		1	0.01%	1		1	0.01%	
TOTAL	3,974	4,076	8,050		4,245	4,123	8,368		-3.80%





Accumulated Cargo Handling on Passengers Aircrafts

Distribution by Airline

Accumulated 2025					Accumulated 2024					
Airline		Incoming Cargo (Ton)	Outgoing Cargo (Ton)	Cargo (Ton)	Rate of Total	Incoming Cargo (Ton)	Outgoing Cargo (Ton)	Cargo (Ton)	Rate of Total	Rate of Change
LY	EL AL ISRAEL AIRLINES	11,096	15,069	26,165	65.76%	12,586	15,610	28,196	74.74%	-7.20%
HU	HAINAN AIRLINES	1,856	716	2,572	6.46%	966	542	1,508	3.99%	70.55%
AF	AIR FRANCE	910	843	1,752	4.40%	960	920	1,880	4.98%	-6.80%
UX	AIR EUROPA	1,056	654	1,710	4.29%	765	393	1,159	3.07%	47.54%
UA	UNITED AIRLINES	658	691	1,349	3.39%	402	328	730	1.93%	84.79%
FZ	FLYDUBAI	583	226	809	2.03%	532	104	636	1.68%	27.20%
EY	ETIHAD AIRWAYS	535	202	737	1.85%	71	53	124	0.32%	
J2	AZERBAIJAN AIRLINES	323	157	480	1.20%	54	10	64	0.16%	
HY	UZBEKISTAN AIR	229	211	440	1.10%	107	102	208	0.55%	111.53%
IZ	ARKIA ISRAELI AIRLINES	216	176	392	0.98%	1	1	2		
LX	SWISS INT`L AIRLINES	120	244	364	0.91%	630	581	1,211	3.21%	-69.94%
DL	DELTA AIRLINES	155	144	299	0.75%					
5Y	ATLAS AIR Inc.		280	280	0.70%					
AI	AIR INDIA	104	141	244	0.61%	145	178	323	0.85%	-24.45%
ET	ETHIOPIAN AIRLINES	177	31	208	0.52%	95	23	118	0.31%	76.27%
A3	AEGEAN AIRLINES	140	40	180	0.45%	210	37	247	0.65%	-27.12%
AZ	ITALIA TRASPORTO AEREO	123	44	167	0.41%	13	20	34	0.09%	
RO	TAROM - ROMANIAN AIR TRAN	141	25	165	0.41%	47	15	61	0.16%	170.49%
LO	LOT POLISH AIRLINES	144	20	164	0.41%	91	34	125	0.33%	31.20%
LH	LUFTHANSA	102	51	152	0.38%	73	34	107	0.28%	42.05%
H4	HISKY EUROPE SRL	120	8	129	0.32%	9		9	0.02%	
QS	SMARTWINGS	106	15	121	0.30%	78	9	88	0.23%	37.50%





Accumulated Cargo Handling on Passengers Aircrafts

Distribution by Airline

Accumulated 2025					Accumulated 2024					
Airline		Incoming Cargo (Ton)	Outgoing Cargo (Ton)	Cargo (Ton)	Rate of Total	Incoming Cargo (Ton)	Outgoing Cargo (Ton)	Cargo (Ton)	Rate of Total	Rate of Change
FX	FEDERAL EXPRESS	119		119	0.29%	105	90	194	0.51%	-38.65%
NC R	NATIONAL AIRLINES	54	39	94	0.23%		135	135	0.35%	-30.37%
WZ	RED WINGS AIRLINES	53	38	91	0.22%	19	24	43	0.11%	111.62%
OS	AUSTRIAN AIRLINES	61	30	91	0.22%	90	12	102	0.27%	-10.78%
H7	HISKY	50	22	72	0.18%	46	22	68	0.18%	5.88%
6H	ISRAIR AIRLINES	55	11	66	0.16%		25	25	0.06%	164.00%
U8	TUS AIRWAYS	51	4	56	0.14%	59	9	68	0.18%	-17.64%
C6	CENTRUM AIR		55	55	0.13%		3	3		
HM	AIR SEYCHELLES	46		46	0.11%	27		28	0.07%	64.28%
RD	EASY CHARTER LLC	41	5	46	0.11%					
A4	AZIMUTH AIRLINES	27	14	41	0.10%	59	12	71	0.18%	-42.25%
5F	FLYONE	19	19	39	0.09%	9	2	10	0.02%	
SN	BRUSSELS AIRLINES	16	2	18	0.04%		1	2		
FB	BULGARIA AIR	11		11	0.02%					
HH	QANOT SHARQ	10	1	11	0.02%					
BT	AIR BALTIC	7	2	9	0.02%	7		7	0.01%	28.57%
CY	CYPRUS AIRWAYS	8	1	9	0.02%	7	1	8	0.02%	12.50%
I2	IBERIA EXPRESS	4	5	9	0.02%	13	24	37	0.09%	-75.67%
GH	GEORGIAN AIRLINES		7	7	0.01%					
W6	WIZZAIR	4	1	5	0.01%					
FP	FLYPRO		2	2						
8V	ASTRAL AVIATION		2	2			11	11	0.02%	-81.81%



Accumulated Cargo Handling on Passengers Aircrafts

Distribution by Airline

Accumulated 2025					Accumulated 2024				
Airline	Incoming Cargo (Ton)	Outgoing Cargo (Ton)	Cargo (Ton)	Rate of Total	Incoming Cargo (Ton)	Outgoing Cargo (Ton)	Cargo (Ton)	Rate of Total	Rate of Change
3F FLYONE ARMENIA LLC		2	2						
BZ BLUE BIRD AIRWAYS	2		2		3		3		-33.33%
MJ MYWAY AIRLINES	1	1	2			7	7	0.01%	-71.42%
BA BRITISH AIRWAYS PLC		1	1			15	15	0.03%	-93.33%
TOTAL	19,534	20,253	39,788		18,295	19,427	37,722		5.47%





Cargo Handling on Cargo Aircrafts

Distribution by Airlines May

May 2025					May 2024					
Airline		Incoming Cargo (Ton)	Outgoing Cargo (Ton)	Cargo (Ton)	Rate of Total	Incoming Cargo (Ton)	Outgoing Cargo (Ton)	Cargo (Ton)	Rate of Total	Rate of Change
ICL	C.A.L ISRAELI CARGO	6,991	2,266	9,257	39.67%	5,483	1,616	7,100	35.75%	30.38%
QY	EUROPEAN AIR TRANSPORT	2,016	1,546	3,562	15.26%	1,683	1,379	3,062	15.41%	16.32%
LY	EL AL ISRAEL AIRLINES	1,368	830	2,198	9.42%	770	523	1,293	6.51%	69.99%
AZG	SILK WAY WEST AIRLINES	986	771	1,758	7.53%	849	667	1,516	7.63%	15.96%
C6	CENTRUM AIR	1,439	102	1,541	6.60%	523	63	586	2.95%	162.96 %
NCR	NATIONAL AIRLINES	1,253	139	1,392	5.96%	1,042	23	1,065	5.36%	30.70%
FX	FEDERAL EXPRESS	532	406	938	4.02%	744	446	1,190	5.99%	-21.17%
5Y	ATLAS AIR Inc.	697		697	2.98%					
3V	ASL AIRLINES BELGIUM	477	190	668	2.86%	410	162	572	2.88%	16.78%
CGF	CARGOAIR	345	209	554	2.37%					
ET	ETHIOPIAN AIRLINES	85	46	132	0.56%	155	62	218	1.09%	-39.44%
8V	ASTRAL AVIATION	117		117	0.50%	112	1	113	0.56%	3.53%
P7	SUPERNOVA AIRLINES	68	20	88	0.37%					
FP	FLYPRO	72		72	0.30%					
M4	POSTE AIR CARGO	47	22	69	0.29%	73	25	98	0.49%	-29.59%
LH	LUFTHANSA	29	29	57	0.24%	746	464	1,210	6.09%	-95.28%
GH	GEORGIAN AIRLINES	53		53	0.22%	44		44	0.22%	20.45%
2U	FLY KHIVA	51		51	0.21%					
AZQ	SILK WAY AIRLINES	32		32	0.13%					
8S	GALISTAIR TRADING LTD	27		27	0.11%					
CIL	CECIL AVIATION LTD.		24	24	0.10%					
LAU	LAUFER GHI		1	1						





Cargo Handling on Cargo Aircrafts

Distribution by Airlines May

Airline	May 2025				May 2024				
	Incoming Cargo (Ton)	Outgoing Cargo (Ton)	Cargo (Ton)	Rate of Total	Incoming Cargo (Ton)	Outgoing Cargo (Ton)	Cargo (Ton)	Rate of Total	Rate of Change
OTHERS	41		41	0.17%	1,495	296	1,792	9.02%	-97.71%
TOTAL	16,729	6,601	23,330		14,130	5,728	19,858		17.48%





Accumulated Cargo Handling on Cargo Aircrafts

Distribution by Airline

Accumulated 2025					Accumulated 2024					
Airline		Incoming Cargo (Ton)	Outgoing Cargo (Ton)	Cargo (Ton)	Rate of Total	Incoming Cargo (Ton)	Outgoing Cargo (Ton)	Cargo (Ton)	Rate of Total	Rate of Change
ICL	C.A.L ISRAELI CARGO	33,020	11,699	44,719	38.99%	25,289	8,677	33,966	33.01%	31.65%
QY	EUROPEAN AIR TRANSPORT	8,853	6,673	15,527	13.53%	7,265	6,474	13,738	13.35%	13.02%
LY	EL AL ISRAEL AIRLINES	6,555	4,657	11,212	9.77%	5,656	3,969	9,625	9.35%	16.48%
C6	CENTRUM AIR	9,405	650	10,055	8.76%	1,039	101	1,140	1.10%	
AZG	SILK WAY WEST AIRLINES	5,913	3,368	9,280	8.09%	6,375	4,044	10,419	10.12%	-10.93%
LH	LUFTHANSA	2,194	1,588	3,782	3.29%	2,840	2,462	5,301	5.15%	-28.65%
FX	FEDERAL EXPRESS	2,334	1,305	3,639	3.17%	1,441	809	2,250	2.18%	61.73%
5Y	ATLAS AIR Inc.	3,582	10	3,591	3.13%					
NCR	NATIONAL AIRLINES	2,083	702	2,785	2.42%	4,897	30	4,927	4.78%	-43.47%
3V	ASL AIRLINES BELGIUM	1,242	660	1,902	1.65%	2,381	947	3,328	3.23%	-42.84%
WT	SWIFT AIR	1,030	868	1,898	1.65%					
ABR	ASL Airlines (Ireland) Li	1,009	605	1,614	1.40%	1,297	1,071	2,368	2.30%	-31.84%
CGF	CARGOAIR	676	484	1,160	1.01%					
ET	ETHIOPIAN AIRLINES	705	346	1,050	0.91%	814	401	1,215	1.18%	-13.58%
RD	EASY CHARTER LLC	439	162	601	0.52%	3,461	717	4,178	4.06%	-85.61%
8V	ASTRAL AVIATION	354		354	0.30%	487	1	488	0.47%	-27.45%
M4	POSTE AIR CARGO	250	83	332	0.28%	291	156	447	0.43%	-25.72%
HY	UZBEKISTAN AIR	302	2	304	0.26%	146		146	0.14%	108.21%
FP	FLYPRO	152		152	0.13%					
P7	SUPERNOVA AIRLINES	74	23	97	0.08%					
GH	GEORGIAN AIRLINES	95		95	0.08%	44		44	0.04%	115.90%
M8	EUROAVIA AIRLINES	88		88	0.07%					





Accumulated Cargo Handling on Cargo Aircrafts

Distribution by Airline

Accumulated 2025					Accumulated 2024				
Airline	Incoming Cargo (Ton)	Outgoing Cargo (Ton)	Cargo (Ton)	Rate of Total	Incoming Cargo (Ton)	Outgoing Cargo (Ton)	Cargo (Ton)	Rate of Total	Rate of Change
VYU FLY VAAYU	61	15	76	0.06%					
AZQ SILK WAY AIRLINES	32	41	73	0.06%	33		33	0.03%	121.21%
2U FLY KHIVA	51		51	0.04%					
8S GALISTAIR TRADING LTD	27		27	0.02%					
CIL CECIL AVIATION LTD.		24	24	0.02%					
MJ MYWAY AIRLINES	12	11	23	0.02%	168	12	180	0.17%	-87.22%
PVV FLY PRO		16	16	0.01%					
LAU LAUFER GHI		1	1		51		51	0.04%	-98.03%
OTHERS	112	39	151	0.13%	7,706	1,346	9,052	8.79%	-98.33%
TOTAL	80,650	34,033	114,685		71,681	31,215	102,896		11.45%





Cargo Handling on Cargo Aircrafts

Distribution by Countries for May

Country	May 2025				May 2024				
	Incoming Cargo (Ton)	Outgoing Cargo (Ton)	Cargo (Ton)	Rate of Total	Incoming Cargo (Ton)	Outgoing Cargo (Ton)	Cargo (Ton)	Rate of Total	Rate of Change
BELGIUM	3,250	2,913	6,163	26.41%	3,668	1,839	5,508	27.73%	11.89%
GERMANY	2,814	1,584	4,397	18.84%	2,942	2,018	4,960	24.97%	-11.35%
CHINA	4,012	127	4,139	17.74%	2,990	243	3,233	16.28%	28.02%
UZBEKISTAN	1,439	102	1,541	6.60%	523	63	586	2.95%	162.96%
AZERBAIJAN	645	771	1,416	6.06%	579	667	1,247	6.27%	13.55%
SPAIN	796		796	3.41%	725		725	3.65%	9.79%
INDIA	478		478	2.04%	237		237	1.19%	101.68%
KENYA	438	18	456	1.95%	75	42	117	0.58%	
ITALY	244	111	355	1.52%	73	154	227	1.14%	56.38%
NORWAY	323		323	1.38%					
FRANCE	144	163	307	1.31%		128	128	0.64%	139.84%
GREECE	189	100	288	1.23%	154	25	179	0.90%	60.89%
CYPRUS	48	122	170	0.72%	131	7	138	0.69%	23.18%
ETHIOPIA	85	46	132	0.56%	155	62	218	1.09%	-39.44%
CZECH REPUBLIC	68	41	108	0.46%					
SWITZERLAND	43	32	76	0.32%					
GEORGIA	53		53	0.22%	606	35	642	3.23%	-91.74%
POLAND		40	40	0.17%		24	24	0.12%	66.66%
SERBIA	8		8	0.03%					
OTHERS	1,652	431	2,083	8.92%	1,270	420	1,690	8.51%	23.25%
TOTAL	16,729	6,601	23,330		14,130	5,728	19,858		17.48%





Accumulated Cargo Handling on Cargo Aircrafts

Distribution by Countries

Countries	Accumulated 2025				Accumulated 2024				
	Incoming Cargo (Ton)	Outgoing Cargo (Ton)	Cargo (Ton)	Rate of Total	Incoming Cargo (Ton)	Outgoing Cargo (Ton)	Cargo (Ton)	Rate of Total	Rate of Change
BELGIUM	15,947	13,946	29,893	26.06%	19,206	11,199	30,404	29.54%	-1.68%
GERMANY	14,612	9,648	24,259	21.15%	12,384	9,738	22,121	21.49%	9.66%
CHINA	14,512	734	15,247	13.29%	13,147	1,390	14,537	14.12%	4.88%
UZBEKISTAN	9,111	647	9,758	8.50%	1,185	124	1,309	1.27%	
AZERBAIJAN	3,681	3,408	7,089	6.18%	4,401	4,016	8,418	8.18%	-15.78%
SPAIN	4,298	29	4,327	3.77%	1,643		1,643	1.59%	163.35%
KENYA	2,898	88	2,986	2.60%	312	201	513	0.49%	
INDIA	2,448	326	2,774	2.41%	600	5	606	0.58%	
FRANCE	1,309	696	2,005	1.74%	421	569	990	0.96%	102.52%
ITALY	1,087	466	1,553	1.35%	448	577	1,025	0.99%	51.51%
NORWAY	1,287		1,287	1.12%	1,452	29	1,481	1.43%	-13.09%
GREECE	859	171	1,030	0.89%	586	26	613	0.59%	68.02%
ETHIOPIA	705	291	996	0.86%	814	401	1,215	1.18%	-18.02%
EGYPT		528	528	0.46%	2	707	709	0.68%	-25.52%
CYPRUS	176	304	480	0.41%	390	101	491	0.47%	-2.24%
SWITZERLAND	209	124	332	0.28%	133	133	266	0.25%	24.81%
CZECH REPUBLIC	137	46	183	0.15%	44		44	0.04%	
NETHERLANDS	84	56	140	0.12%	128	136	263	0.25%	-46.76%
MALTA		130	130	0.11%		110	110	0.10%	18.18%
GEORGIA	107		108	0.09%	750	35	786	0.76%	-86.25%
POLAND		65	65	0.05%		48	48	0.04%	35.41%
TANZANIA		42	42	0.03%					





Accumulated Cargo Handling on Cargo Aircrafts

Distribution by Countries

Countries	Accumulated 2025				Accumulated 2024				
	Incoming Cargo (Ton)	Outgoing Cargo (Ton)	Cargo (Ton)	Rate of Total	Incoming Cargo (Ton)	Outgoing Cargo (Ton)	Cargo (Ton)	Rate of Total	Rate of Change
ESTONIA		39	39	0.03%					
BULGARIA	3	26	29	0.02%					
UNITED KINGDOM		14	14	0.01%	101	100	201	0.19%	-93.03%
RWANDA		12	12	0.01%					
KUWAIT	10		10						
MACEDONIA	9		9						
ROMANIA		9	9		27	28	55	0.05%	-83.63%
SERBIA	8		8						
TURKMENISTAN		2	2			4	4		-50.00%
BAHRAIN	2		2						
JORDAN	1		1			1	1		
OTHERS	7,152	2,185	9,337	8.14%	13,505	1,536	15,041	14.61%	-37.92%
TOTAL	80,650	34,033	114,685		71,681	31,215	102,896		11.45%





Domestic Activity

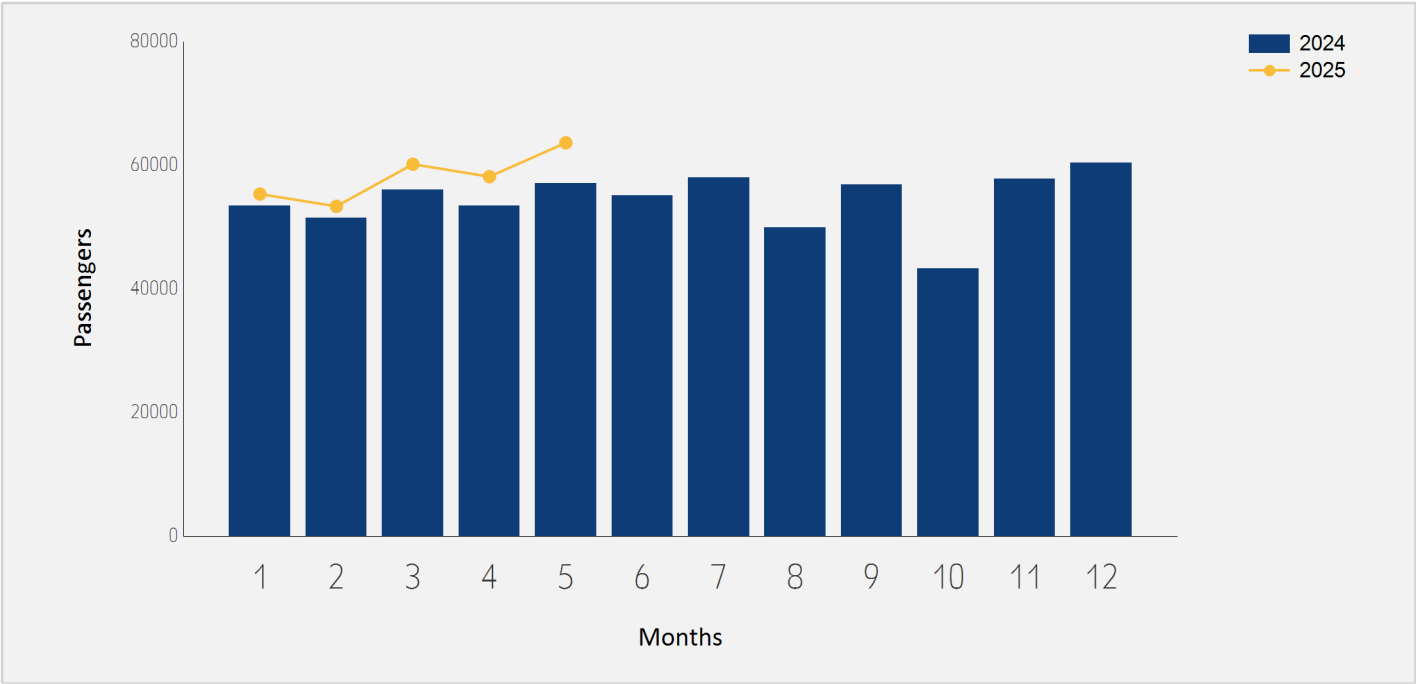




Domestic Passenger Traffic

Distribution by Months

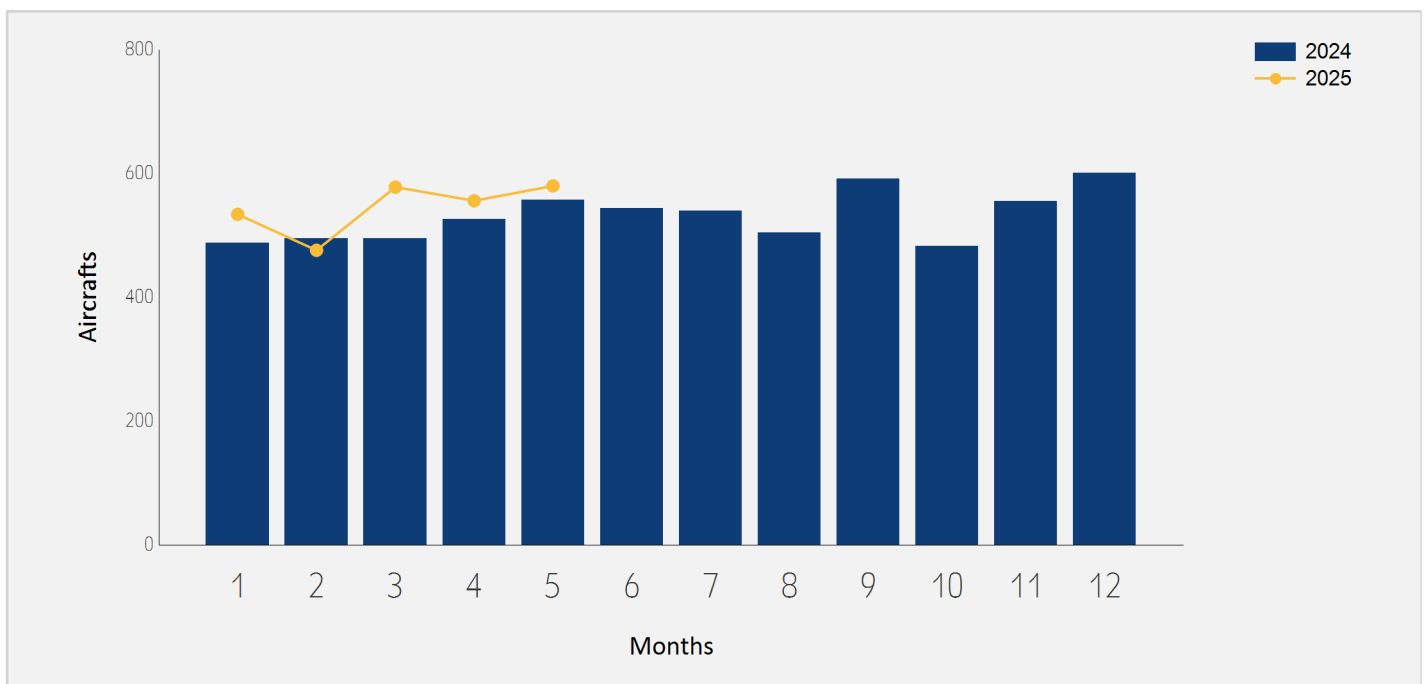
Month	2025	2024	Rate of Change
January	55,348	53,410	3.62%
February	53,363	51,461	3.69%
March	60,174	56,042	7.37%
April	58,164	53,490	8.73%
May	63,639	57,056	11.53%
Total	290,688	271,459	7.08%



Domestic Aircrafts Traffic

Distribution by Months

Month	2025	2024	Rate of Change
January	534	488	9.42%
February	476	495	-3.83%
March	578	495	16.76%
April	556	526	5.70%
May	580	557	4.12%
Total	2,724	2,561	6.36%





Domestic Passengers Traffic

Distribution by Airlines for May

May 2025			May 2024		
Airline	Passengers	Rate of Total	Passengers	Rate of Total	Rate of Change
IZ ARKIA ISRAELI AIRLINES	45,985	72.25%	38,084	66.74%	20.74%
6H ISRAIR AIRLINES	17,550	27.57%	18,763	32.88%	-6.46%
OTHERS	104	0.16%	209	0.36%	-50.23%
TOTAL	63,639		57,056		11.53%

Accumulated Domestic Passengers Traffic

Distribution by Airlines

Accumulated 2025			Accumulated 2024		
Airline	Passengers	Rate of Total	Passengers	Rate of Total	Rate of Change
IZ ARKIA ISRAELI AIRLINES	205,138	70.56%	177,523	65.39%	15.55%
6H ISRAIR AIRLINES	85,027	29.25%	93,477	34.43%	-9.03%
OTHERS	523	0.17%	459	0.16%	13.94%
TOTAL	290,688		271,459		7.08%





Domestic Passenger Traffic

Distribution by Destinations for May

Destination	May 2025		May 2024		Rate of Change
	Passengers	Rate of Total	Passengers	Rate of Total	
RAMON	63,280	99.43%	56,847	99.63%	11.31%
OTHERS	359	0.56%	209	0.36%	71.77%
TOTAL	63,639		57,056		11.53%

Accumulated Domestic Passenger Traffic

Distribution by Destinations

Destination	Accumulated 2025		Accumulated 2024		Rate of Change
	Passengers	Rate of Total	Passengers	Rate of Total	
RAMON	289,621	99.63%	270,913	99.79%	6.90%
OTHERS	1,067	0.36%	546	0.20%	95.42%
TOTAL	290,688		271,459		7.08%

