



Annual Report

Ben Gurion International Airport

Year 2017



Israel Airport Authority

Ben Gurion International Airport

Produced by the Industry & Management Department

This report is protected by copyright and is the exclusive property of the Israel Airports Authority.

It must be emphasized that the data in the report are based on the reports of the airlines, and received under their responsibility.

The information is intended for personal use, and therefore may not be quoted or passed on to any third party without written permission from the Israel Airports Authority.

In addition, no commercial use may be made of this report.

Edit Yehoshua

Activity Coordinator

Tel. +972-3-9752017

Email: edity@iaa.gov.il

Rachel Lehava

Manager, Industrial & Management Dep.

Tel. +972-3-9752019

Email: rachel@iaa.gov.il

Yossi Tzemach

Head, Industrial & Management Dep.

Tel. +972-3-9752020

Email: yossiz@iaa.gov.il



Dear Activity partners, Customers, Employees and Managers of Ben-Gurion Airport and the Israel Airports Authority.

In 2017 the all-time record of the increase of international passenger and aircraft traffic at Ben-Gurion International Airport was broken and surpassed the high bar of 20 million passengers.

Terminal 1 started a complete departing passenger procedure, including duty free and boarding gates and international traffic has reached 1.5 million international departing passengers.

We are in the midst of several ongoing projects: extending Terminal 1 to adapt to the traffic increase, absorption of the 4th concourse, absorption and operation of new aprons (Apron H), extending the parking lots and continuing to promote the development of infrastructure for the absorption of traffic and passenger increase in future years.

The service rendered to the customers, passengers and airlines will continue to be the value and purpose of our activities.

I would like to express my full appreciation to all our colleagues: airlines, concession holders, ground handling agents, activity partners, state authorities and especially to the devoted employees and managers of Ben-Gurion Airport.

Together we will continue to develop the international aviation in Israel.

Thank you all!



Dear friends and partners,

I hereby respectfully submit for your review a report summarizing the aviation activity at Ben - Gurion International Airport in 2017.

During the year, a total of 20,781,211 passengers on 142,937 international and domestic flights passed through Ben- Gurion Airport.

International passenger traffic in 2017 totaled 20,187,506 passengers, representing an increase of 16.36% compared to 2016.

International aircraft traffic totaled 136,956 flights, representing an increase of 12.94% compared to 2016.

International passenger traffic at Terminal 3 this month totaled 18,707,540 passengers, representing an increase of 15.20% compared to 2016. Departing passengers on Terminal 1 International flights this month totaled 1,479,966, representing an increase of 33.47% compared to 2016

On domestic flights 593,705 passengers passed through Ben- Gurion Airport this year, compared with 594,664 in 2016, a decrease of 0.16%.

During the year cargo weighing a total 0.16 tons as handled, representing 340,923 of an increase% compared with 7.98 in 2016.

Israeli airlines carried 7,124,458 passengers in 2017, 35.29% of all travelers passing through Ben - Gurion Airport, an increase of 5.51% relative to the previous year.

Of the leading airlines that operated in Ben - Gurion Airport this year, the highest growth relative to 2016 was registered in the activity of WIZZAIR, PEGASUS AIRLINES and ISRAIR AIRLINES.

The Destination with the highest volume of activity was ISTANBUL-ATATURK, with a total of 946,059 passengers to and from, an increase of 13.72% compared to the previous year.

The country with the highest volume of activity was TURKEY, with 1,991,791 passengers, constituting 9.86% of all activity.

Of the leading countries, the highest growth relative to last year was recorded in passenger traffic to CYPRUS, POLAND and ROMANIA.

Below you will find additional tables providing details about movements of aircraft, passengers and cargo at Ben - Gurion International Airport.

Sincerely yours,

Shmuel Zakay

Managing Director,

Ben-Gurion International Airport



Content



Aviation Activity

Aviation Activity Summary	1
International Activity Summary	2 - 4
Domestic Activity Summary	5



International Activity

Distribution By Months	7 - 8
Distribution By Airlines	9 - 13
Distribution By Countries	14 - 16
Distribution By First Destination	17 - 21



Cargo Activity

Distribution by Transporter	23
Distribution By Months	23
Distribution By Airlines	24 - 26
Distribution By Countries	27



Domestic Activity

Distribution By Months	29 - 30
Distribution By Airlines	31





Passengers and Aircrafts

Aviation Activity at Ben Gurion International Airport

International Activity

	Accumulated Since the beginning of the year		
	2017	2016	Rate Of Change
Incoming Aircraft	68,457	60,610	12.94%
Outgoing Aircraft	68,499	60,654	12.93%
Total Aircraft	136,956	121,264	12.94%
Incoming Passengers	10,100,734	8,673,264	16.45%
Outgoing Passengers	10,086,772	8,674,501	16.28%
Transit Passengers	2,459	2,095	17.37%
Total Passengers	20,187,506	17,347,765	16.36%

Domestic Activity

	Accumulated Since the beginning of the year		
	2017	2016	Rate Of Change
Aircraft	5,981	6,328	-5.48%
Passengers	593,705	594,664	-0.16%

International and Domestic Activity Summary

	Accumulated Since the beginning of the year		
	2017	2016	Rate Of Change
Aircraft	142,937	127,592	12.02%
Passengers	20,781,211	17,942,429	15.82%





Passengers and Aircrafts

Int'l Aviation Activity at Ben Gurion International Airport by Terminal

Terminal 3

	Accumulated Since the beginning of the year		
	2017	2016	Rate of Change
Incoming Aircraft	68,457	60,610	12.94%
Outgoing Aircraft	59,263	53,735	10.28%
Total Aircraft	127,720	114,345	11.69%
Incoming Passengers	10,100,734	8,673,264	16.45%
Outgoing Passengers	8,606,806	7,565,745	13.76%
Transit Passengers	2,459	2,095	17.37%
Total Passengers	18,707,540	16,239,009	15.20%

Terminal 1

	Accumulated Since the beginning of the year		
	2017	2016	Rate of Change
Incoming Aircraft			
Outgoing Aircraft	9,236	6,919	33.48%
Total Aircraft	9,236	6,919	33.48%
Incoming Passengers			
Outgoing Passengers	1,479,966	1,108,756	33.47%
Total Passengers	1,479,966	1,108,756	33.47%





Passengers and Aircrafts

Int'l Aviation Activity at Ben Gurion International Airport by Flight Type

Schedule and Charter Flights

	Accumulated Since the beginning of the year		
	2017	2016	Rate of Change
Incoming Aircraft	63,388	55,570	14.06%
Outgoing Aircraft	63,382	55,553	14.09%
Total Aircraft	126,770	111,123	14.08%
Incoming Passengers	10,086,925	8,659,197	16.48%
Outgoing Passengers	10,073,903	8,661,135	16.31%
Transit Passengers	2,458	2,095	17.32%
Total Passengers	20,160,828	17,320,332	16.39%

Private Flights

	Accumulated Since the beginning of the year		
	2017	2016	Rate of Change
Incoming Aircraft	2,609	2,541	2.67%
Outgoing Aircraft	2,645	2,572	2.83%
Total Aircraft	5,254	5,113	2.75%
Incoming Passengers	8,957	8,795	1.84%
Outgoing Passengers	8,702	8,421	3.33%
Total Passengers	17,659	17,216	2.57%





Passengers and Aircrafts

Int'l Aviation Activity at Ben Gurion International Airport by Flight Type

Cargo Flights

	Accumulated Since the beginning of the year		
	2017	2016	Rate of Change
Incoming Aircraft	2,209	2,245	-1.60%
Outgoing Aircraft	2,213	2,262	-2.16%
Total Aircraft	4,422	4,507	-1.88%
Incoming Passengers	1,078	1,032	4.45%
Outgoing Passengers	1,291	986	30.93%
Total Passengers	2,369	2,018	17.39%

Other Flights

	Accumulated Since the beginning of the year		
	2017	2016	Rate of Change
Incoming Aircraft	251	254	-1.18%
Outgoing Aircraft	259	267	-2.99%
Total Aircraft	510	521	-2.11%
Incoming Passengers	3,774	4,240	-10.99%
Outgoing Passengers	2,876	3,959	-27.35%
Total Passengers	6,650	8,199	-18.89%





Passengers and Aircrafts

Domestic Aviation Activity at Ben Gurion International Airport by Flight Type

Schedule Flights

	Accumulated Since the beginning of the year		
	2017	2016	Rate of Change
Aircraft	4,676	5,068	-7.73%
Passengers	588,828	593,062	-0.71%

Private Flights

	Accumulated Since the beginning of the year		
	2017	2016	Rate of Change
Aircraft	511	527	-3.03%
Passengers	458	451	1.55%

Other Flights

	Accumulated Since the beginning of the year		
	2017	2016	Rate of Change
Aircraft	794	733	8.32%
Passengers	4,419	1,151	283.92%





International Activity

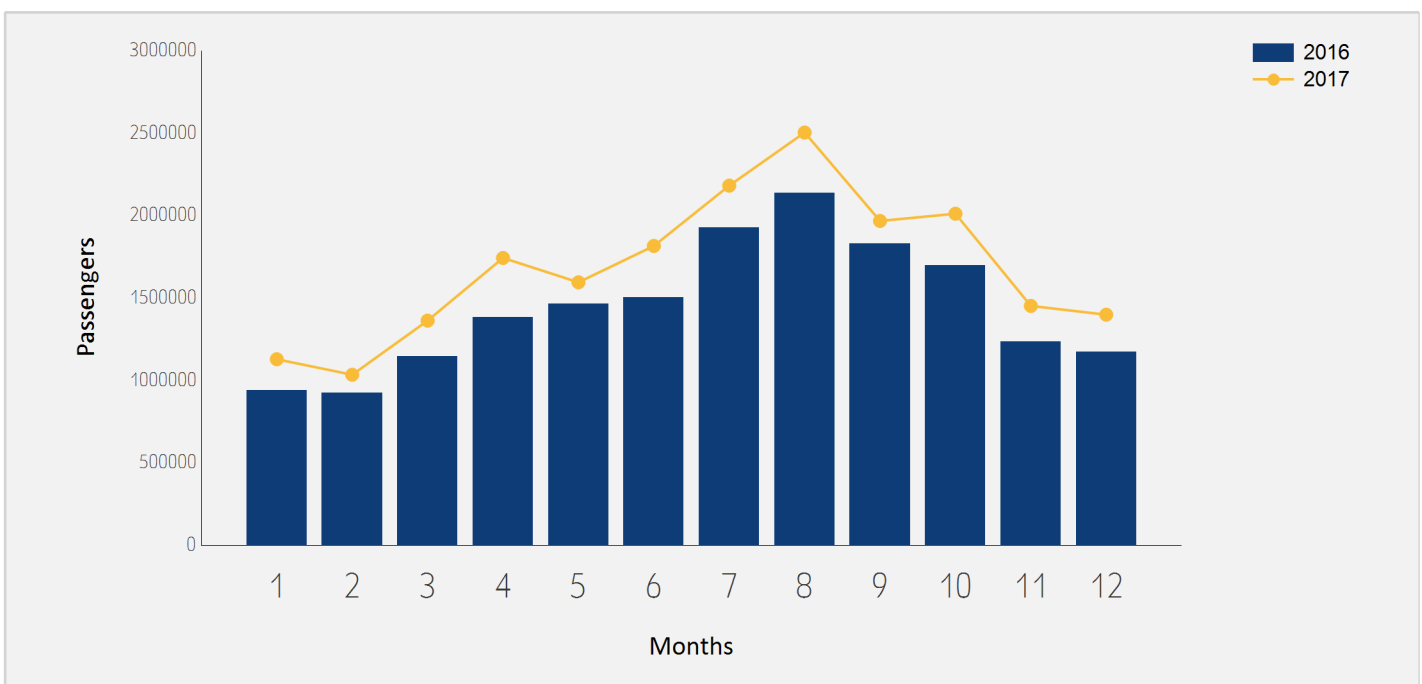




International Passenger Traffic

Distribution by Months

Months	2017	2016	Rate of Change
January	1,127,762	938,349	20.18%
February	1,033,619	921,881	12.12%
March	1,362,323	1,145,149	18.96%
April	1,742,457	1,383,178	25.97%
May	1,594,499	1,463,438	8.95%
June	1,815,295	1,501,813	20.87%
July	2,181,145	1,925,855	13.25%
August	2,503,208	2,137,485	17.10%
September	1,966,861	1,830,129	7.47%
October	2,010,842	1,695,045	18.63%
November	1,451,413	1,233,371	17.67%
December	1,398,082	1,172,072	19.28%
Total	20,187,506	17,347,765	16.36%

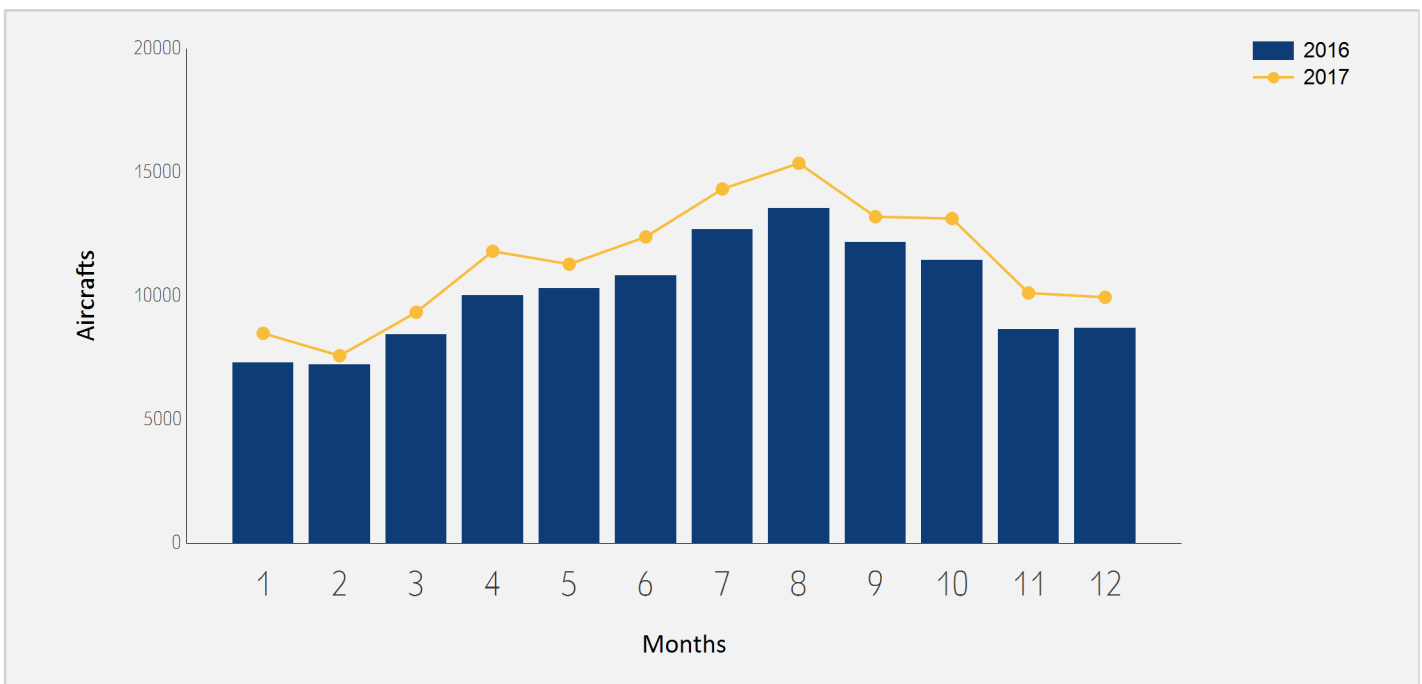




International Aircraft Traffic

Distribution by Months

Months	2017	2016	Rate of Change
January	8,488	7,306	16.17%
February	7,580	7,217	5.02%
March	9,337	8,446	10.54%
April	11,805	10,017	17.84%
May	11,283	10,302	9.52%
June	12,387	10,813	14.55%
July	14,324	12,686	12.91%
August	15,362	13,547	13.39%
September	13,201	12,165	8.51%
October	13,129	11,434	14.82%
November	10,117	8,638	17.12%
December	9,943	8,693	14.37%
Total	136,956	121,264	12.94%





Int'l Accumulated Passenger Traffic

Distribution by Airline

Accumulated 2017						
Airline	Passengers	Rate of Total	Passengers	Rate of Total	Rate of Change	
LY	EL AL ISRAEL AIRLINES	5,665,657	28.06%	5,546,078	31.96%	2.15%
TK	TURKISH AIRLINES	1,018,555	5.04%	929,838	5.35%	9.54%
SU	AEROFLOT RUSSIAN AIRLINES	804,832	3.98%	702,972	4.05%	14.48%
EZY	EASYJET	799,380	3.95%	719,892	4.14%	11.04%
6H	ISRAIR AIRLINES	729,387	3.61%	548,295	3.16%	33.02%
W6	WIZZAIR	699,846	3.46%	403,092	2.32%	73.61%
IZ	ARKIA ISRAELI AIRLINES	660,095	3.26%	648,138	3.73%	1.84%
PS	UKRAINE INTL AIR	606,631	3.00%	521,025	3.00%	16.43%
PC	PEGASUS AIRLINES	572,061	2.83%	396,538	2.28%	44.26%
LH	LUFTHANSA	561,454	2.78%	490,783	2.82%	14.39%
UA	UNITED AIRLINES	541,213	2.68%	432,773	2.49%	25.05%
A3	AEGEAN AIRLINES	474,646	2.35%	408,302	2.35%	16.24%
AZ	ALITALIA	409,454	2.02%	449,061	2.58%	-8.81%
BA	BRITISH AIRWAYS PLC	325,537	1.61%	297,915	1.71%	9.27%
AF	AIR FRANCE	325,056	1.61%	305,613	1.76%	6.36%
LX	SWISS INT'L AIRLINES	303,613	1.50%	283,800	1.63%	6.98%
QS	TRAVEL SERVICE	286,236	1.41%	212,609	1.22%	34.63%
TO	TRANSAVIA FRANCE	254,600	1.26%	159,477	0.91%	59.64%
OS	AUSTRIAN AIRLINES	223,996	1.10%	222,347	1.28%	0.74%
SN	BRUSSELS AIRLINES	198,301	0.98%	173,469	0.99%	14.31%
DL	DELTA AIRLINES	195,985	0.97%	230,018	1.32%	-14.79%





Int'l Accumulated Passenger Traffic

Distribution by Airline

		Accumulated 2017		Accumulated 2016		
Airline		Passengers	Rate of Total	Passengers	Rate of Total	Rate of Change
LO	LOT POLISH AIRLINES	192,864	0.95%	75,026	0.43%	157.06%
IB	IBERIA	184,553	0.91%	167,469	0.96%	10.20%
AC	AIR CANADA	184,079	0.91%	148,597	0.85%	23.87%
FR	RYANAIR	171,566	0.84%			
AB	AIR-BERLIN	160,105	0.79%	132,546	0.76%	20.79%
AEA	AIR EUROPA	158,509	0.78%	129,667	0.74%	22.24%
HV	TRANSAVIA	158,267	0.78%	99,036	0.57%	59.80%
RJ	ROYAL JORDANIAN	142,362	0.70%	109,744	0.63%	29.72%
CAI	CORENDON AIRLINES	140,688	0.69%	157,047	0.90%	-10.41%
ET	ETHIOPIAN AIRLINES	140,665	0.69%	119,383	0.68%	17.82%
BBG	BLUE BIRD AIRWAYS	135,869	0.67%	11,592	0.06%	
RO	TAROM - RUMANIAN AIR TRAN	123,800	0.61%	121,289	0.69%	2.07%
KL	K.L.M.	120,867	0.59%	120,215	0.69%	0.54%
VY	VUELING AIRLINES S.A.	118,159	0.58%	83,895	0.48%	40.84%
FV	RUSSIYA AIRLINES	111,575	0.55%	107,890	0.62%	3.41%
HU	HAINAN AIRLINES Co. Ltd	104,126	0.51%	49,691	0.28%	109.54%
FB	BULGARIA AIR	102,718	0.50%	96,763	0.55%	6.15%
OB	BLUE AIR TRANSPORT AERIAN	100,830	0.49%	48,971	0.28%	105.89%
ENT	ENTER AIR	96,520	0.47%	92,972	0.53%	3.81%
NO	NEOS	88,286	0.43%	96,931	0.55%	-8.91%
U6	URAL AIR	88,258	0.43%	16,959	0.09%	420.41%





Int'l Accumulated Passenger Traffic

Distribution by Airline

		Accumulated 2017		Accumulated 2016		
Airline		Passengers	Rate of Total	Passengers	Rate of Total	Rate of Change
8Q	ONUR AIR	87,949	0.43%	42,898	0.24%	105.01%
BUC	BULGARIAN AIR CHARTER	87,638	0.43%	102,409	0.59%	-14.42%
U8	TUS AIRWAYS	84,432	0.41%	22,562	0.13%	274.22%
TWI	TAILWIND AIRLINES	80,880	0.40%	72,048	0.41%	12.25%
CX	CATHAY PACIFIC AIRWAYS Lt	80,422	0.39%			
ST	GERMANIA FLUGGESELLSCHAFT	73,826	0.36%	49,205	0.28%	50.03%
ZB	MONARCH AIRLINES LTD	72,083	0.35%	68,211	0.39%	5.67%
A9	GEORGIAN AIRWAYS	71,202	0.35%	75,032	0.43%	-5.10%
B2	BELAVIA AIRLINE	58,238	0.28%	48,850	0.28%	19.21%
KE	KOREAN AIR	57,065	0.28%	53,742	0.30%	6.18%
KK	ATLAS GLOBAL	55,061	0.27%	23,283	0.13%	136.48%
CXI	CORENDON EUROPE	54,826	0.27%			
HY	UZBEKISTAN AIR	54,357	0.26%	47,493	0.27%	14.45%
CO	COBALT AIR	49,673	0.24%			
JU	AIR SERBIA	47,566	0.23%	40,624	0.23%	17.08%
FHY	FREE BIRD AIRLINES	41,920	0.20%	43,517	0.25%	-3.66%
DY	NORWEGIAN AIR SHUTTLE ASA	41,476	0.20%	64,194	0.37%	-35.38%
BT	AIR BALTIC	40,992	0.20%	28,698	0.16%	42.83%
AY	FINNAIR	37,326	0.18%	35,888	0.20%	4.00%
XLF	XL AIRWAYS FRANCE	32,900	0.16%	2,685	0.01%	
J2	AZERBAIJAN AIRLINES	31,196	0.15%	27,490	0.15%	13.48%





Int'l Accumulated Passenger Traffic

Distribution by Airline

		Accumulated 2017		Accumulated 2016		
Airline		Passengers	Rate of Total	Passengers	Rate of Total	Rate of Change
4D	AIR SINAI	29,344	0.14%	29,010	0.16%	1.15%
M4	MISTRAL AIR	27,638	0.13%	28,636	0.16%	-3.48%
YE	YAN AIR	26,344	0.13%	5,007	0.02%	426.14%
KM	AIR MALTA	25,223	0.12%	33,711	0.19%	-25.17%
	OTHERS	356,728	1.76%	334,854	1.93%	6.53%
TOTAL		20,187,506		17,347,765		16.36%





Int'l Accumulated Passenger Traffic

Distribution by Israeli Airlines

		Accumulated 2017		Accumulated 2016		
Airlines		Passengers	Rate of Total	Passengers	Rate of Total	Rate of Change
LY	EL AL ISRAEL AIRLINES	5,665,657	28.06%	5,546,078	31.96%	2.15%
6H	ISR AIR AIRLINES	729,387	3.61%	548,295	3.16%	33.02%
IZ	ARKIA ISRAELI AIRLINES	660,095	3.26%	648,138	3.73%	1.84%
	OTHERS	69,319	0.34%	9,851	0.05%	603.67%
	TOTAL	7,124,458		6,752,362		5.51%





Int'l Accumulated Passenger Traffic

Distribution by Countries

Countries	Accumulated 2017		Accumulated 2016		Rate of Change
	Passengers	Rate of Total	Passengers	Rate of Total	
TURKEY	1,991,791	9.86%	1,659,640	9.56%	20.01%
UNITED STATES	1,540,501	7.63%	1,458,148	8.40%	5.64%
GERMANY	1,417,217	7.02%	1,275,967	7.35%	11.07%
FRANCE	1,240,761	6.14%	1,097,979	6.32%	13.00%
RUSSIAN FEDERATION	1,220,336	6.04%	1,075,064	6.19%	13.51%
ITALY	1,175,009	5.82%	1,158,365	6.67%	1.43%
UNITED KINGDOM	1,152,085	5.70%	1,052,592	6.06%	9.45%
GREECE	1,149,220	5.69%	1,000,982	5.77%	14.80%
SPAIN	897,488	4.44%	816,906	4.70%	9.86%
UKRAINE	843,442	4.17%	741,682	4.27%	13.72%
ROMANIA	694,122	3.43%	521,581	3.00%	33.08%
SWITZERLAND	680,090	3.36%	653,496	3.76%	4.06%
CYPRUS	603,694	2.99%	355,133	2.04%	69.99%
POLAND	599,632	2.97%	357,887	2.06%	67.54%
NETHERLANDS	571,373	2.83%	512,446	2.95%	11.49%
CZECH REPUBLIC	439,918	2.17%	375,135	2.16%	17.26%
BULGARIA	430,607	2.13%	372,986	2.15%	15.44%
HUNGARY	387,342	1.91%	301,228	1.73%	28.58%
AUSTRIA	358,331	1.77%	340,366	1.96%	5.27%
CHINA	352,791	1.74%	219,919	1.26%	60.41%
BELGIUM	298,879	1.48%	282,450	1.62%	5.81%
GEORGIA	263,250	1.30%	194,153	1.11%	35.58%





Int'l Accumulated Passenger Traffic

Distribution by Countries

Countries	Accumulated 2017		Accumulated 2016		Rate of Change
	Passengers	Rate of Total	Passengers	Rate of Total	
CANADA	262,530	1.30%	215,481	1.24%	21.83%
THAILAND	202,971	1.00%	198,140	1.14%	2.43%
JORDAN	144,385	0.71%	114,676	0.66%	25.90%
ETHIOPIA	140,414	0.69%	119,459	0.68%	17.54%
SERBIA	124,694	0.61%	54,447	0.31%	129.01%
LATVIA	74,700	0.37%	46,093	0.26%	62.06%
PORTUGAL	69,884	0.34%	56,315	0.32%	24.09%
BELARUS	63,074	0.31%	56,863	0.32%	10.92%
INDIA	58,475	0.28%	61,251	0.35%	-4.53%
SOUTH KOREA	57,075	0.28%	53,750	0.30%	6.18%
SOUTH AFRICA	55,608	0.27%	53,562	0.30%	3.81%
TANZANIA	55,172	0.27%	41,037	0.23%	34.44%
UZBEKISTAN	54,295	0.26%	47,532	0.27%	14.22%
CROATIA	50,120	0.24%	54,955	0.31%	-8.79%
LITHUANIA	49,717	0.24%	33,039	0.19%	50.47%
FINLAND	48,824	0.24%	46,625	0.26%	4.71%
SLOVAKIA	48,508	0.24%	12,996	0.07%	273.25%
MONTENEGRO	42,661	0.21%	18,672	0.10%	128.47%
DENMARK	40,698	0.20%	36,690	0.21%	10.92%
AZERBAIJAN	38,947	0.19%	27,831	0.16%	39.94%
SWEDEN	35,309	0.17%	31,526	0.18%	11.99%
EGYPT	35,122	0.17%	34,836	0.20%	0.82%





Int'l Accumulated Passenger Traffic

Distribution by Countries

Countries	Accumulated 2017		Accumulated 2016		Rate of Change
	Passengers	Rate of Total	Passengers	Rate of Total	
MALTA	29,191	0.14%	34,903	0.20%	-16.36%
SLOVENIA	22,808	0.11%	25,879	0.14%	-11.86%
MOLDOVA	19,016	0.09%	18,740	0.10%	1.47%
ICELAND	15,073	0.07%	52		
SEYCHELLES	10,109	0.05%	6,383	0.03%	58.37%
ARMENIA	8,964	0.04%	3		
OTHERS	21,283	0.10%	21,924	0.12%	-2.92%
TOTAL	20,187,506		17,347,765		16.36%





Int'l Accumulated Passenger Traffic

Distribution by First Destination

Destination	Accumulated 2017		Accumulated 2016		
	Passengers	Rate of Total	Passengers	Rate of Total	Rate of Change
ISTANBUL-ATATURK	946,059	4.68%	831,917	4.79%	13.72%
PARIS-CHARLES DE GAULLE	855,725	4.23%	822,080	4.73%	4.09%
MOSCOW	805,172	3.98%	703,220	4.05%	14.49%
NEW YORK - J.F.KENNEDY	661,256	3.27%	695,805	4.01%	-4.96%
ROME - FIUMICINO	640,785	3.17%	680,444	3.92%	-5.82%
LONDON - HEATHROW	607,792	3.01%	568,486	3.27%	6.91%
BUCHAREST - OTOPENI	574,933	2.84%	443,958	2.55%	29.50%
NEW YORK - NEWARK	572,954	2.83%	526,145	3.03%	8.89%
AMSTERDAM	567,151	2.80%	512,439	2.95%	10.67%
KIEV,KYIV-BORISPOL	563,288	2.79%	556,646	3.20%	1.19%
FRANKFURT	515,807	2.55%	496,094	2.85%	3.97%
LARNACA	508,764	2.52%	337,719	1.94%	50.64%
ANTALYA	506,384	2.50%	401,632	2.31%	26.08%
ZURICH	455,038	2.25%	436,755	2.51%	4.18%
ISTANBUL-SABIHA GOKCHEN	453,821	2.24%	409,022	2.35%	10.95%
MADRID	440,841	2.18%	374,331	2.15%	17.76%
PRAGUE-RUZYNE	437,099	2.16%	374,838	2.16%	16.61%
LUTON	418,915	2.07%	376,189	2.16%	11.35%
BARCELONA	411,268	2.03%	399,834	2.30%	2.85%
WARSAW	395,185	1.95%	268,938	1.55%	46.94%
ELEFTHERIOS VENIZELOS	364,108	1.80%	253,576	1.46%	43.58%
BUDAPEST	363,492	1.80%	301,227	1.73%	20.67%





Int'l Accumulated Passenger Traffic

Distribution by First Destination

Destination	Accumulated 2017		Accumulated 2016		
	Passengers	Rate of Total	Passengers	Rate of Total	Rate of Change
VIENNA	347,560	1.72%	336,223	1.93%	3.37%
MUNICH	347,529	1.72%	295,098	1.70%	17.76%
HERAKLION	304,646	1.50%	277,903	1.60%	9.62%
BRUSSELS	295,542	1.46%	267,670	1.54%	10.41%
BERLIN -SCHOENEFELD	293,171	1.45%	281,279	1.62%	4.22%
MILAN-MALPENSA	278,700	1.38%	248,116	1.43%	12.32%
RHODES-PARADISI	252,371	1.25%	269,703	1.55%	-6.42%
TORONTO	227,561	1.12%	215,163	1.24%	5.76%
PARIS-ORLY	221,290	1.09%	131,670	0.75%	68.06%
MOSCOW-DOMODEDOVO	209,729	1.03%	226,579	1.30%	-7.43%
BANGKOK INTL.-SUARNABHUM	202,943	1.00%	198,140	1.14%	2.42%
HONG KONG INT'L	199,590	0.98%	118,335	0.68%	68.66%
SOFIA	192,098	0.95%	137,483	0.79%	39.72%
BERLIN TEGEL	175,072	0.86%	135,503	0.78%	29.20%
TBILISI	163,903	0.81%	135,434	0.78%	21.02%
GENEVA	143,923	0.71%	145,413	0.83%	-1.02%
AMMAN (QUEEN ALIA INT'L)	143,000	0.70%	112,868	0.65%	26.69%
ADDIS ABABA	140,414	0.69%	119,459	0.68%	17.54%
SAN FRANCISCO	138,337	0.68%	71,253	0.41%	94.14%
BURGAS	134,777	0.66%	144,563	0.83%	-6.76%
BEIJING	134,250	0.66%	101,517	0.58%	32.24%
BELGRADE	124,694	0.61%	54,447	0.31%	129.01%





Int'l Accumulated Passenger Traffic

Distribution by First Destination

Destination	Accumulated 2017		Accumulated 2016		
	Passengers	Rate of Total	Passengers	Rate of Total	Rate of Change
ODESSA	122,845	0.60%	88,068	0.50%	39.48%
ST. PETERSBURG	110,452	0.54%	103,498	0.59%	6.71%
LOS ANGELES	100,714	0.49%	107,597	0.62%	-6.39%
VARNA	99,509	0.49%	85,969	0.49%	15.74%
BATUMI	99,055	0.49%	58,479	0.33%	69.38%
PAPHOS	94,930	0.47%	17,414	0.10%	445.13%
BASEL	81,053	0.40%	71,218	0.41%	13.80%
KATOWICE	79,103	0.39%	79,039	0.45%	0.08%
RIGA	74,700	0.37%	46,093	0.26%	62.06%
KOS	73,585	0.36%	73,057	0.42%	0.72%
VILAFRANCA-VERONA	70,786	0.35%	78,139	0.45%	-9.41%
MANCHESTER	70,764	0.35%	61,141	0.35%	15.73%
MARSEILLE	67,611	0.33%	66,565	0.38%	1.57%
MINSK	63,074	0.31%	56,863	0.32%	10.92%
VENICE	59,402	0.29%	49,968	0.28%	18.88%
MUMBAI	58,398	0.28%	61,251	0.35%	-4.65%
LISBON	58,337	0.28%	50,840	0.29%	14.74%
INCHEON INTL AIRPORT	57,065	0.28%	53,750	0.30%	6.16%
THESSALONIKI	56,067	0.27%	26,469	0.15%	111.82%
JOHANNESBURG	55,589	0.27%	53,532	0.30%	3.84%
TASHKENT	54,295	0.26%	47,532	0.27%	14.22%
BOSTON-LOGAN INT	53,503	0.26%	53,024	0.30%	0.90%





Int'l Accumulated Passenger Traffic

Distribution by First Destination

Destination	Accumulated 2017		Accumulated 2016		
	Passengers	Rate of Total	Passengers	Rate of Total	Rate of Change
DALAMAN	50,376	0.24%	12,147	0.07%	314.71%
ZANZIBAR	49,429	0.24%	36,122	0.20%	36.83%
IASI	48,260	0.23%	33,843	0.19%	42.59%
CLUJ NAPOCA	46,533	0.23%	33,998	0.19%	36.86%
DUSSELDORF	44,619	0.22%	28,496	0.16%	56.57%
VILNIUS INTL	43,383	0.21%	32,855	0.18%	32.04%
KHARKOV	42,606	0.21%	28,861	0.16%	47.62%
COPENHAGEN KASTRUP	40,698	0.20%	36,683	0.21%	10.94%
NICE	39,867	0.19%	31,666	0.18%	25.89%
BAKU HEYDAR ALIYEV INT'L	38,925	0.19%	27,823	0.16%	39.90%
NAPLES-CAPODICHINO	38,049	0.18%	30,621	0.17%	24.25%
HELSINKI	37,327	0.18%	37,213	0.21%	0.30%
KRAKOW	37,322	0.18%	1,065		
BODRUM	34,600	0.17%	4,829	0.02%	616.50%
MONTREAL - DORVAL	34,466	0.17%	267		
LYON - SATOLAS	34,241	0.16%	27,910	0.16%	22.68%
LONDON - GATWICK	34,184	0.16%	45,474	0.26%	-24.82%
ZAGREB	33,499	0.16%	38,788	0.22%	-13.63%
STOCKHOLM-ARLANDA	33,073	0.16%	31,147	0.17%	6.18%
CATANIA FONTANAROSSA	31,496	0.15%	37,334	0.21%	-15.63%
LVOV	30,178	0.14%	22,802	0.13%	32.34%
CAIRO INTERNATIONAL	30,008	0.14%	29,409	0.16%	2.03%





Int'l Accumulated Passenger Traffic

Distribution by First Destination

Destination	Accumulated 2017		Accumulated 2016		
	Passengers	Rate of Total	Passengers	Rate of Total	Rate of Change
BERGAMO	29,516	0.14%	2,476	0.01%	
MALTA	29,191	0.14%	34,903	0.20%	-16.36%
LUBLIN	28,179	0.13%			
BRATISLAVA	27,400	0.13%	9,735	0.05%	181.45%
KIEV-ZHULYANY	25,739	0.12%	11,146	0.06%	130.92%
TIVAT	25,605	0.12%	15,713	0.09%	62.95%
VINITSA	24,642	0.12%	11,455	0.06%	115.12%
DNEPROPETROVSK	24,120	0.11%	22,682	0.13%	6.33%
DEBRECEN	23,850	0.11%	1		
MOSCOW-ZHUKOVSKY INTL AIR	22,837	0.11%			
LJUBLJANA	22,383	0.11%	25,879	0.14%	-13.50%
ZAKYNTHOS	21,497	0.10%	26,264	0.15%	-18.15%
CORFU	21,364	0.10%	22,684	0.13%	-5.81%
WROCLAW	21,153	0.10%	178		
OTHERS	589,117	2.91%	370,676	2.13%	58.93%
TOTAL	20,187,506		17,347,765		16.36%



Cargo Activity





Cargo Handling

Distribution by Transporter

Transporter	2017 (Ton)	2016 (Ton)	Rate of Change
Cargo on Passenger Aircraft - Incoming	86,741	69,688	24.47%
Cargo on Passenger Aircraft - Outgoing	76,907	69,808	10.16%
Total Cargo on Passenger Aircraft	163,650	139,497	17.31%
Cargo on Cargo Aircraft - Incoming	105,902	102,810	3.00%
Cargo on Cargo Aircraft - Outgoing	71,371	73,418	-2.78%
Total Cargo on Cargo Aircraft	177,273	176,226	0.59%
Total	340,923	315,723	7.98%

Distribution by Months

Month	2017 (Ton)	2016 (Ton)	Rate of Change
January	26,434	25,109	5.27%
February	25,662	25,006	2.62%
March	31,513	28,073	12.25%
April	27,824	26,562	4.75%
May	28,958	24,871	16.43%
June	26,545	24,839	6.86%
July	27,415	25,549	7.30%
August	29,143	26,515	9.91%
September	27,411	26,947	1.72%
October	27,592	22,922	20.37%
November	30,218	27,961	8.07%
December	32,208	31,369	2.67%
Total	340,923	315,723	7.98%





Accumulated Cargo Handling on Passengers Aircrafts

Distribution by Airline

		Accumulated 2017				Accumulated 2016				
Airline		Incoming Cargo (Ton)	Outgoing Cargo (Ton)	Cargo (Ton)	Rate of Total	Incoming Cargo (Ton)	Outgoing Cargo (Ton)	Cargo (Ton)	Rate of Total	Rate of Change
LY	EL AL ISRAEL AIRLINES	29,442	32,730	62,172	37.99%	26,409	30,495	56,905	40.79%	9.25%
UA	UNITED AIRLINES	7,033	11,349	18,382	11.23%	5,753	8,960	14,713	10.54%	24.93%
LX	SWISS INT'L AIRLINES	8,281	5,587	13,867	8.47%	7,496	5,926	13,422	9.62%	3.31%
TK	TURKISH AIRLINES	9,882	2,544	12,426	7.59%	7,288	2,948	10,236	7.33%	21.39%
SU	AEROFLOT RUSSIAN AIRLINES	7,220	3,334	10,554	6.44%	4,443	2,681	7,124	5.10%	48.14%
BA	BRITISH AIRWAYS PLC	5,000	3,550	8,550	5.22%	3,630	3,854	7,484	5.36%	14.24%
AC	AIR CANADA	3,243	3,109	6,352	3.88%	2,020	2,795	4,815	3.45%	31.92%
DL	DELTA AIRLINES	2,561	3,190	5,752	3.51%	2,811	4,316	7,127	5.10%	-19.29%
HU	HAINAN AIRLINES Co. Ltd	2,498	2,215	4,714	2.88%	1,095	825	1,921	1.37%	145.39%
CX	CATHAY PACIFIC AIRWAYS Lt	1,795	1,628	3,423	2.09%					
IB	IBERIA	1,301	1,190	2,491	1.52%	1,041	1,066	2,107	1.51%	18.22%
LH	LUFTHANSA	1,200	928	2,128	1.30%	1,191	1,009	2,200	1.57%	-3.27%
KE	KOREAN AIR	1,105	906	2,011	1.22%	1,176	938	2,114	1.51%	-4.87%
PC	PEGASUS AIRLINES	821	735	1,555	0.95%	765	505	1,271	0.91%	22.34%
AE A	AIR EUROPA	608	560	1,168	0.71%	15	13	28	0.02%	
RJ	ROYAL JORDANIAN	895	273	1,168	0.71%	751	93	844	0.60%	38.38%
HY	UZBEKISTAN AIR	338	585	923	0.56%	400	474	874	0.62%	5.60%
SN	BRUSSELS AIRLINES	656	216	873	0.53%	736	210	946	0.67%	-7.71%
PS	UKRAINE INTL AIR	338	494	832	0.50%	282	539	821	0.58%	1.33%
QS	TRAVEL SERVICE	332	183	515	0.31%	309	159	467	0.33%	10.27%
OS	AUSTRIAN AIRLINES	350	130	479	0.29%	254	208	462	0.33%	3.67%
ET	ETHIOPIAN AIRLINES	147	228	375	0.22%	48	232	280	0.20%	33.92%





Accumulated Cargo Handling on Passengers Aircrafts

Distribution by Airline

		Accumulated 2017				Accumulated 2016				
Airline		Incoming Cargo (Ton)	Outgoing Cargo (Ton)	Cargo (Ton)	Rate of Total	Incoming Cargo (Ton)	Outgoing Cargo (Ton)	Cargo (Ton)	Rate of Total	Rate of Change
AF	AIR FRANCE	194	178	372	0.22%	234	243	477	0.34%	-22.01%
RO	TAROM - RUMANIAN AIR TRAN	161	153	314	0.19%	339	372	710	0.50%	-55.77%
J2	AZERBAIJAN AIRLINES	247	23	270	0.16%	139	38	177	0.12%	52.54%
LO	LOT POLISH AIRLINES	169	45	215	0.13%	176	36	212	0.15%	1.41%
A3	AEGEAN AIRLINES	135	72	207	0.12%	205	60	265	0.18%	-21.88%
A9	GEORGIAN AIRWAYS	18	168	185	0.11%	8	65	73	0.05%	153.42%
AZ	ALITALIA	144	34	178	0.10%	190	129	319	0.22%	-44.20%
	OTHERS	630	569	1,199	0.73%	483	621	1,104	0.79%	8.60%
	TOTAL	86,743	76,907	163,649		69,690	69,808	139,498		17.31%





Accumulated Cargo Handling on Cargo Aircrafts

Distribution by Airline

		Accumulated 2017				Accumulated 2016				
Airline		Incoming Cargo Ton)	Outgoing Cargo Ton)	Cargo Ton)	Rate of Total	Incoming Cargo Ton)	Outgoing Cargo Ton)	Cargo Ton)	Rate of Total	Rate of Change
ICL	C.A.L ISRAELI CARGO	33,987	22,935	56,922	32.10%	31,675	19,806	51,480	29.21%	10.57%
LY	EL AL ISRAEL AIRLINES	26,090	14,041	40,130	22.63%	26,236	14,183	40,418	22.93%	-0.71%
MNB	MNG CARGO AIRLINES	11,291	4,925	16,216	9.14%	9,830	5,419	15,250	8.65%	6.33%
AZG	SILK WAY WEST AIRLINES	6,601	8,040	14,640	8.25%	5,561	8,454	14,015	7.95%	4.45%
BCS	EUROPEAN AIR TRANSPORT	6,969	5,552	12,521	7.06%	6,517	5,270	11,786	6.68%	6.23%
LH	LUFTHANSA	7,805	4,695	12,500	7.05%	6,987	5,550	12,537	7.11%	-0.29%
FX	FEDERAL EXPRESS	4,258	4,497	8,756	4.93%	4,279	4,608	8,887	5.04%	-1.47%
TK	TURKISH AIRLINES	4,789	3,614	8,403	4.74%	5,747	4,543	10,290	5.83%	-18.33%
3V	ASL Airlines Belgium	2,835	1,797	4,631	2.61%	2,990	2,097	5,087	2.88%	-8.96%
KE	KOREAN AIR	358	385	743	0.41%	443	689	1,132	0.64%	-34.36%
P3	CARGOLOGICAIR	322	155	477	0.26%					
	OTHERS	598	736	1,333	0.75%	2,545	2,800	5,345	3.03%	-75.06%
	TOTAL	105,902	71,371	177,273		102,809	73,419	176,228		0.59%





Accumulated Cargo Handling on Cargo Aircrafts

Distribution by Countries

Countries	Accumulated 2017				Accumulated 2016				
	Incoming Cargo (Ton)	Outgoing Cargo (Ton)	Cargo (Ton)	Rate of Total	Incoming Cargo (Ton)	Outgoing Cargo (Ton)	Cargo (Ton)	Rate of Total	Rate of Change
BELGIUM	51,579	36,610	88,189	49.74%	52,477	35,558	88,036	49.95%	0.17%
GERMANY	24,738	6,457	31,195	17.59%	22,599	5,673	28,271	16.04%	10.34%
TURKEY	10,003	12,157	22,160	12.50%	9,771	13,989	23,760	13.48%	-6.73%
AZERBAIJAN	6,601	8,081	14,682	8.28%	5,569	8,318	13,888	7.88%	5.71%
CYPRUS	7,579	40	7,619	4.29%	7,010	4	7,014	3.98%	8.62%
ITALY	108	4,198	4,306	2.42%	43	5,014	5,057	2.86%	-14.85%
NORWAY	3,111		3,111	1.75%					
FRANCE	1,133	1,037	2,170	1.22%	1,098	1,113	2,210	1.25%	-1.80%
AUSTRIA	31	1,431	1,463	0.82%	7	1,754	1,761	0.99%	-16.92%
SOUTH KOREA	272	203	475	0.26%	476	551	1,027	0.58%	-53.74%
SWITZERLAND	355	104	459	0.25%	779		779	0.44%	-41.07%
RWANDA		207	207	0.11%		39	39	0.02%	430.76%
JORDAN	81	109	191	0.10%	145	490	635	0.36%	-69.92%
OTHERS	311	736	1,047	0.59%	2,835	916	3,752	2.12%	-72.09%
TOTAL	105,902	71,371	177,273		102,809	73,419	176,228		0.59%



Domestic Activity

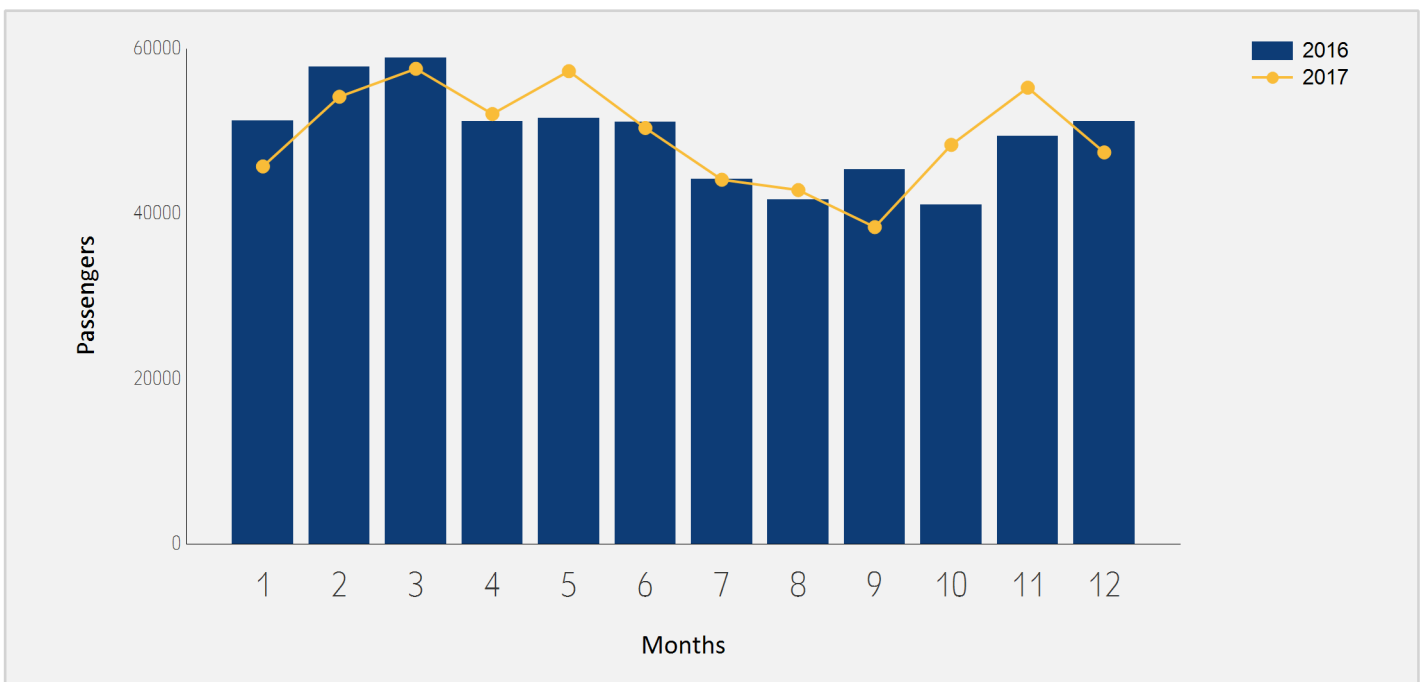




Domestic Passenger Traffic

Distribution by Months

Month	2017	2016	Rate of Change
January	45,737	51,247	-10.75%
February	54,183	57,830	-6.30%
March	57,570	58,853	-2.18%
April	52,089	51,166	1.80%
May	57,279	51,573	11.06%
June	50,394	51,118	-1.41%
July	44,129	44,204	-0.16%
August	42,873	41,690	2.83%
September	38,385	45,364	-15.38%
October	48,349	41,088	17.67%
November	55,279	49,370	11.96%
December	47,438	51,161	-7.27%
Total	593,705	594,664	-0.16%

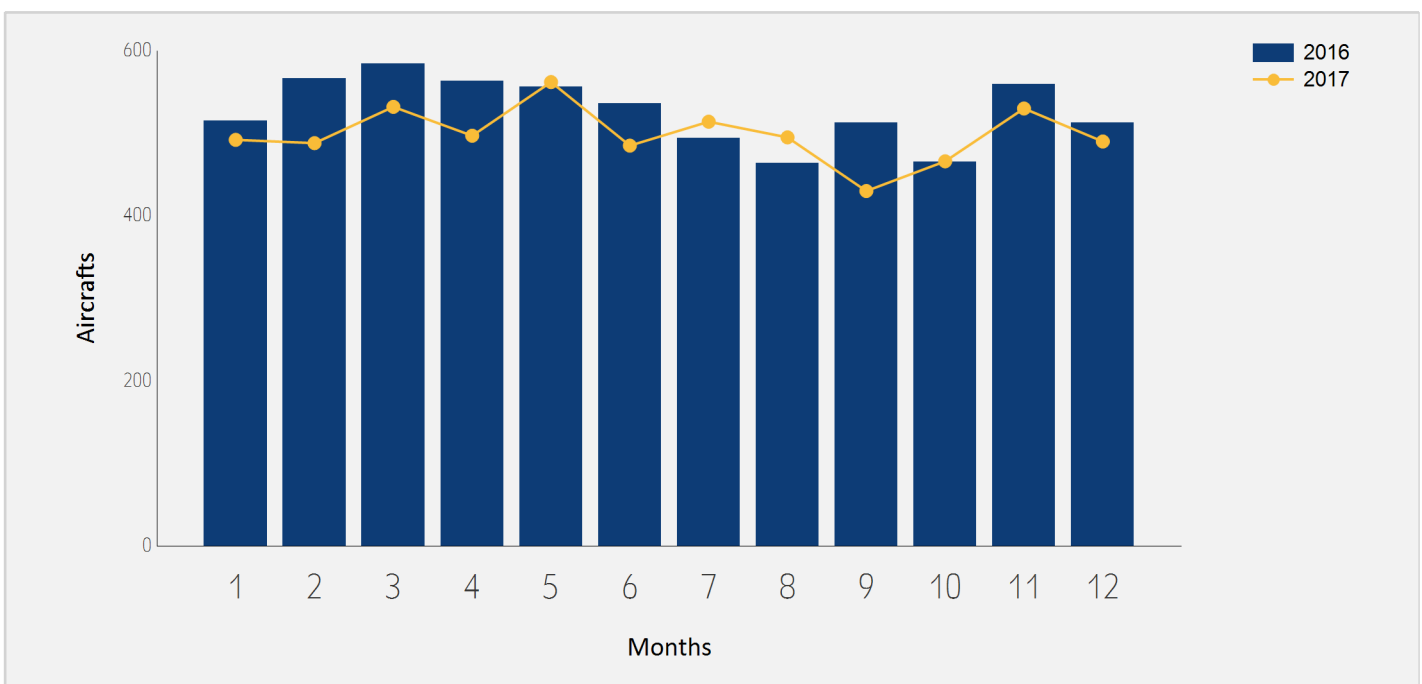




Domestic Aircrafts Traffic

Distribution by Months

Month	2017	2016	Rate of Change
January	492	515	-4.46%
February	488	566	-13.78%
March	532	584	-8.90%
April	497	563	-11.72%
May	562	556	1.07%
June	485	536	-9.51%
July	514	494	4.04%
August	495	464	6.68%
September	430	513	-16.17%
October	466	465	0.21%
November	530	559	-5.18%
December	490	513	-4.48%
Total	5,981	6,328	-5.48%





Accumulated Domestic Passengers Traffic

Distribution by Airlines

		Accumulated 2017		Accumulated 2016		
Airline		Passengers	Rate of Total	Passengers	Rate of Total	Rate of Change
IZ	ARKIA ISRAELI AIRLINES	419,150	70.59%	408,533	68.69%	2.59%
6H	ISRAIR AIRLINES	171,516	28.88%	185,179	31.14%	-7.37%
LY	EL AL ISRAEL AIRLINES	1,664	0.28%	436	0.07%	281.65%
	OTHERS	1,375	0.23%	516	0.08%	166.47%
	TOTAL	593,705		594,664		-0.16%

Distribution by Destinations

		Accumulated 2017		Accumulated 2016		
Destination		Passengers	Rate of Total	Passengers	Rate of Total	Rate of Change
	EILAT-J.HOZMAN	580,191	97.72%	582,261	97.91%	-0.35%
	OTHERS	13,514	2.27%	12,403	2.08%	8.95%
	TOTAL	593,705		594,664		-0.16%

