

Monthly Report

Ben Gurion International Airport

October 2021



Israel Airport Authority

Ben Gurion International Airport

Produced by the Industry & Management Department

This report is protected by copyright and is the exclusive property of the Israel Airports Authority.

It must be emphasized that the data in the report are based on the reports of the airlines, and received under their responsibility.

The information is intended for personal use, and therefore may not be quoted or passed on to any third party without written permission from the Israel Airports Authority.

In addition, no commercial use may be made of this report.

Edit Yehoshua

Activity Coordinator

Tel. +972-3-9752017

Email: edity@iaa.gov.il

Rachel Lehava

Manager, Industrial & Management Dep.

Tel. +972-3-9752019

Email: rachelle@iaa.gov.il

Yossi Tzemach

Head, Industrial & Management Dep.

Tel. +972-3-9752020

Email: yossiz@iaa.gov.il



Dear friends and partners,

I hereby respectfully submit for your review a report summarizing the aviation activity at Ben - Gurion International Airport in October 2021.

During the month, a total of 853,493 passengers on 8,184 international and domestic flights passed through Ben- Gurion Airport.

International passenger traffic in October totaled 788,607 passengers representing an increase of 258% compared to October 2020.

International aircraft traffic totaled 7,439 flights, representing an increase of 106.92% compared to October 2020.

International passenger traffic at Terminal 3 this month totaled 786,238 passengers, at Terminal 1 totaled 2,369.

On domestic flights 64,886 passengers passed through Ben- Gurion Airport this month.

Israeli airlines carried 239,460 passengers in this month, 30.36% of all travelers passing through Ben - Gurion Airport, an increase of 313% relative to the previous October.

The airlines which contributed the most to the increase of passenger traffic this month are: EL AL ISRAEL AIRLINES, RYANAIR and TURKISH AIRLINES.

The Destination with the highest volume of activity was NEW YORK - J.F.KENNEDY with a total of 49,147 passengers to and from.

The country with the highest volume of activity was the UNITED STATES, with 112,641 passengers, constituting 14.28% of all activity.

Of the leading countries, the highest growth relative to last October was recorded in passenger traffic to TURKEY, FRANCE and UNITED STATES.

Cargo transportation this month stood at 34,361 tons and reflects an increase of 27.66% compared to October 2020. 12,165 tons were transported in passenger aircraft and 22,196 tons in cargo aircraft.

Below you will find additional tables providing details about movements of aircraft, passengers and cargo at Ben - Gurion International Airport.

Sincerely yours,
Shmuel Zakay
Managing Director,
Ben-Gurion International Airport



Content



Aviation Activity

Aviation Activity Summary	1
International Activity Summary	2 - 4
Domestic Activity Summary	5



International Activity

Distribution By Months	7 - 8
Distribution By Airlines	9 - 19
Distribution By Countries	20 - 25
Distribution By First Destination	26 - 41



Cargo Activity

Distribution by Transporter	43
Distribution By Months	43
Distribution By Airlines	44 - 48
Distribution By Countries	49 - 51



Domestic Activity

Distribution By Months	53 - 54
Distribution By Airlines	55
Distribution By Destinations	56





Passengers and Aircrafts

Aviation Activity at Ben Gurion International Airport

International Activity

	Current Month			Accumulated Since the beginning of the year		
	October 2021	October 2020	Rate Of Change	2021	2020	Rate Of Change
Incoming Aircrafts	3,719	1,802	106.38%	25,769	21,445	20.16%
Outgoing Aircrafts	3,720	1,793	107.47%	25,761	21,429	20.21%
Total Aircrafts	7,439	3,595	106.92%	51,530	42,874	20.18%
Incoming Passengers	414,077	121,831		2,232,370	2,050,286	8.88%
Outgoing Passengers	374,530	98,294		2,265,694	2,053,383	10.33%
Transit Passengers	2	9	-77.77%	138	1,991	-93.06%
Total Passengers	788,607	220,125		4,498,064	4,103,669	9.61%

Domestic Activity

	Current Month			Accumulated Since the beginning of the year		
	October 2021	October 2020	Rate Of Change	2021	2020	Rate Of Change
Aircrafts	745	250	198.00%	6,510	4,667	39.49%
Passengers	64,886	7,164		493,570	299,211	64.95%

International and Domestic Activity Summary

	Current Month			Accumulated Since the beginning of the year		
	October 2021	October 2020	Rate Of Change	2021	2020	Rate Of Change
Aircrafts	8,184	3,845	112.84%	58,040	47,541	22.08%
Passengers	853,493	227,289		4,991,634	4,402,880	13.37%





Passengers and Aircrafts

Int'l Aviation Activity at Ben Gurion International Airport by Terminal

Terminal 3

	Current Month			Accumulated Since the beginning of the year		
	October 2021	October 2020	Rate of Change	2021	2020	Rate of Change
Incoming Aircrafts	3,708	1,802	105.77%	25,416	21,445	18.51%
Outgoing Aircrafts	3,720	1,793	107.47%	25,534	19,326	32.12%
Total Aircrafts	7,428	3,595	106.62%	50,950	40,771	24.96%
Incoming Passengers	411,708	121,831		2,200,850	2,050,286	7.34%
Outgoing Passengers	374,530	98,294		2,243,659	1,756,947	27.70%
Transit Passengers	2	9	-77.77%	138	1,991	-93.06%
Total Passengers	786,238	220,125		4,444,509	3,807,233	16.73%

Terminal 1

	Current Month			Accumulated Since the beginning of the year		
	October 2021	October 2020	Rate of Change	2021	2020	Rate of Change
Incoming Aircrafts	11			353		
Outgoing Aircrafts				227	2,103	-89.20%
Total Aircrafts	11			580	2,103	-72.42%
Incoming Passengers	2,369			31,520		
Outgoing Passengers				22,035	296,436	-92.56%
Total Passengers	2,369			53,555	296,436	-81.93%





Passengers and Aircrafts

Int'l Aviation Activity at Ben Gurion International Airport by Flight Type

Schedule and Charter Flights

	Current Month			Accumulated Since the beginning of the year		
	October 2021	October 2020	Rate of Change	2021	2020	Rate of Change
Incoming Aircrafts	2,954	1,068	176.59%	18,186	15,599	16.58%
Outgoing Aircrafts	2,966	1,083	173.86%	18,294	15,755	16.11%
Total Aircrafts	5,920	2,151	175.22%	36,480	31,354	16.34%
Incoming Passengers	412,702	119,843		2,220,116	2,041,925	8.72%
Outgoing Passengers	373,423	96,957		2,253,911	2,044,758	10.22%
Transit Passengers	2			135	1,982	-93.18%
Total Passengers	786,125	216,800		4,474,027	4,086,683	9.47%

Private Flights

	Current Month			Accumulated Since the beginning of the year		
	October 2021	October 2020	Rate of Change	2021	2020	Rate of Change
Incoming Aircrafts	372	387	-3.87%	3,410	2,163	57.65%
Outgoing Aircrafts	374	374		3,369	2,159	56.04%
Total Aircrafts	746	761	-1.97%	6,779	4,322	56.84%
Incoming Passengers	1,138	1,779	-36.03%	10,533	6,411	64.29%
Outgoing Passengers	1,003	1,169	-14.20%	10,330	6,897	49.77%
Total Passengers	2,141	2,948	-27.37%	20,863	13,308	56.77%





Passengers and Aircrafts

Int'l Aviation Activity at Ben Gurion International Airport by Flight Type

Cargo Flights

	Current Month			Accumulated Since the beginning of the year		
	October 2021	October 2020	Rate of Change	2021	2020	Rate of Change
Incoming Aircrafts	370	327	13.14%	3,935	3,502	12.36%
Outgoing Aircrafts	359	317	13.24%	3,868	3,330	16.15%
Total Aircrafts	729	644	13.19%	7,803	6,832	14.21%
Incoming Passengers	57	11		168	245	-31.42%
Outgoing Passengers	44	15	193.33%	256	370	-30.81%
Total Passengers	101	26		424	615	-31.05%

Other Flights

	Current Month			Accumulated Since the beginning of the year		
	October 2021	October 2020	Rate of Change	2021	2020	Rate of Change
Incoming Aircrafts	23	20	15.00%	238	181	31.49%
Outgoing Aircrafts	21	19	10.52%	230	185	24.32%
Total Aircrafts	44	39	12.82%	468	366	27.86%
Incoming Passengers	180	198	-9.09%	1,553	1,705	-8.91%
Outgoing Passengers	60	153	-60.78%	1,197	1,358	-11.85%
Total Passengers	240	351	-31.62%	2,750	3,063	-10.21%





Passengers and Aircrafts

Domestic Aviation Activity at Ben Gurion International Airport by Flight Type

Schedule Flights

	Current Month			Accumulated Since the beginning of the year		
	October 2021	October 2020	Rate of Change	2021	2020	Rate of Change
Aircrafts	672	137		5,511	3,490	57.90%
Passengers	64,684	7,112		492,164	298,564	64.84%

Private Flights

	Current Month			Accumulated Since the beginning of the year		
	October 2021	October 2020	Rate of Change	2021	2020	Rate of Change
Aircrafts	25	53	-52.83%	542	530	2.26%
Passengers	22	45	-51.11%	468	447	4.69%

Other Flights

	Current Month			Accumulated Since the beginning of the year		
	October 2021	October 2020	Rate of Change	2021	2020	Rate of Change
Aircrafts	48	60	-20.00%	457	647	-29.36%
Passengers	180	7		938	200	





International Activity

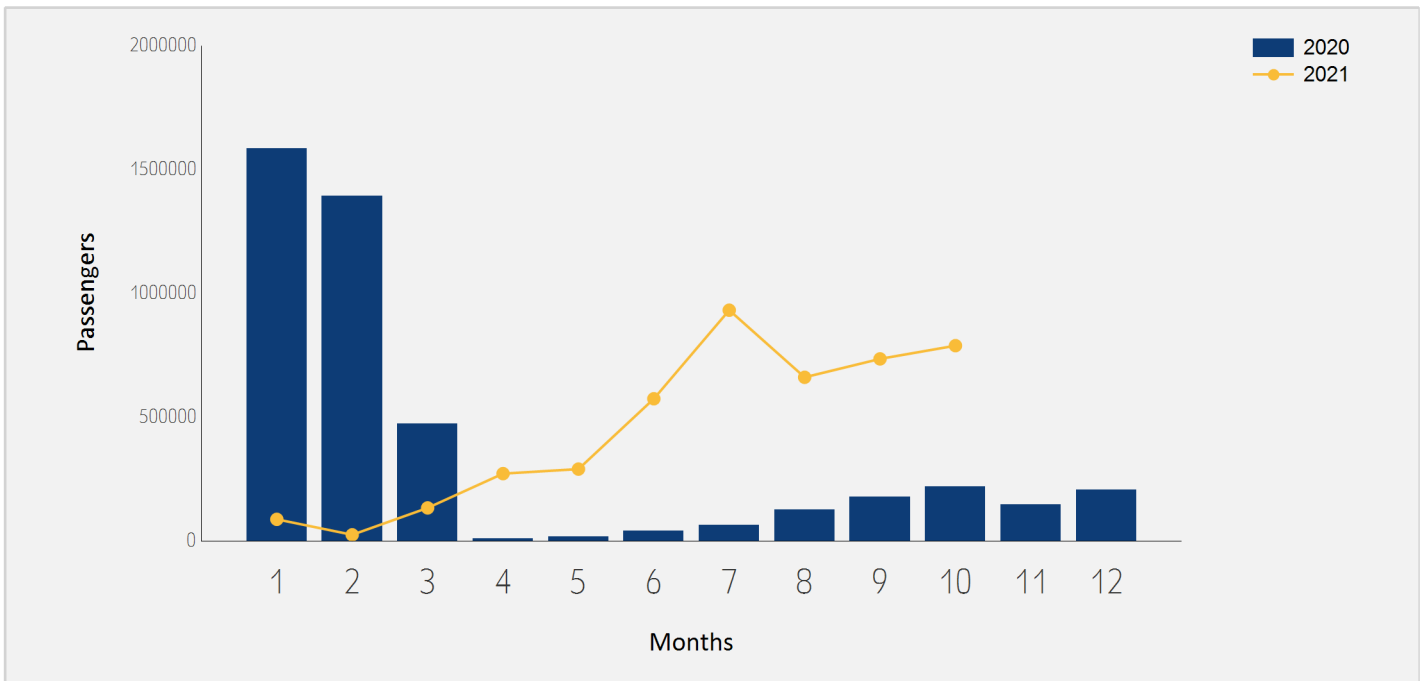




International Passenger Traffic

Distribution by Months

Months	2021	2020	Rate of Change
January	87,196	1,584,027	-94.49%
February	24,770	1,391,803	-98.22%
March	133,342	471,907	-71.74%
April	271,760	9,377	
May	290,102	18,225	
June	574,122	40,970	
July	932,020	64,002	
August	660,913	126,355	
September	735,232	176,878	
October	788,607	220,125	
Total	4,498,064	4,103,669	9.61%

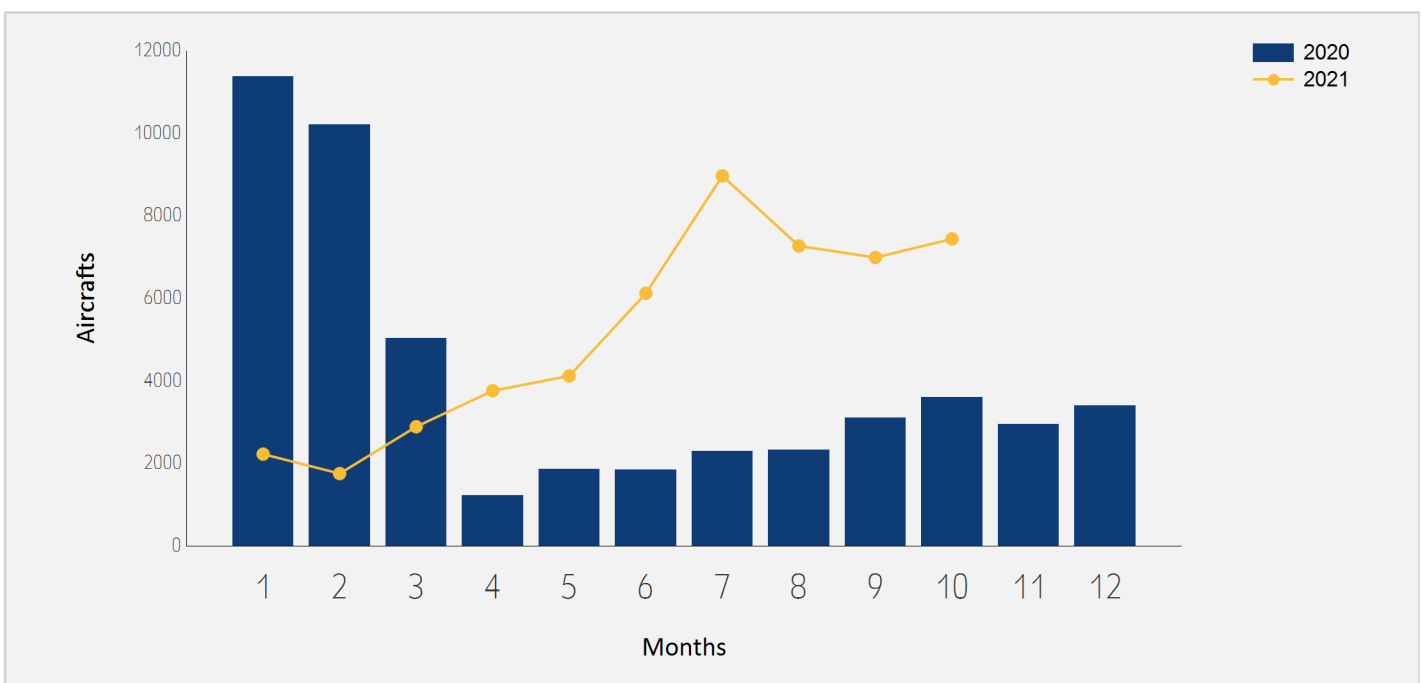




International Aircraft Traffic

Distribution by Months

Months	2021	2020	Rate of Change
January	2,225	11,374	-80.43%
February	1,753	10,207	-82.82%
March	2,888	5,038	-42.67%
April	3,761	1,225	
May	4,119	1,863	121.09%
June	6,120	1,849	
July	8,967	2,291	
August	7,269	2,328	
September	6,989	3,104	125.16%
October	7,439	3,595	106.92%
Total	51,530	42,874	20.18%





International Passenger Traffic

Distribution by Airline for October

		October 2021		October 2020		
Airline		Passengers	Rate of Total	Passengers	Rate of Total	Rate of Change
LY	EL AL ISRAEL AIRLINES	167,513	21.24%	21,533	9.78%	
FR	RYANAIR	86,458	10.96%	8,344	3.79%	
TK	TURKISH AIRLINES	59,083	7.49%	26,126	11.86%	126.14%
6H	ISRAIR AIRLINES	38,384	4.86%	31,589	14.35%	21.51%
UA	UNITED AIRLINES	37,871	4.80%	18,852	8.56%	100.88%
EZY	EASYJET	35,278	4.47%	4,271	1.94%	
IZ	ARKIA ISRAELI AIRLINES	33,091	4.19%	4,534	2.05%	
W6	WIZZAIR	26,905	3.41%	5,123	2.32%	
PC	PEGASUS AIRLINES	24,071	3.05%	22,150	10.06%	8.67%
DL	DELTA AIRLINES	20,934	2.65%	6,079	2.76%	
LH	LUFTHANSA	19,490	2.47%	6,563	2.98%	196.96%
PS	UKRAINE INTL AIR	16,205	2.05%	6,200	2.81%	161.37%
FZ	FLYDUBAI	16,124	2.04%			
AA	AMERICAN AIRLINES	14,209	1.80%			
BA	BRITISH AIRWAYS PLC	11,774	1.49%	4,060	1.84%	190.00%
AF	AIR FRANCE	11,511	1.45%	6,224	2.82%	84.94%
LX	SWISS INT'L AIRLINES	11,489	1.45%	1,797	0.81%	
A3	AEGEAN AIRLINES	11,419	1.44%	12,066	5.48%	-5.36%
BZ	BLUE BIRD AIRWAYS	9,459	1.19%	11,071	5.02%	-14.56%
OS	AUSTRIAN AIRLINES	9,410	1.19%	1,983	0.90%	
KL	K.L.M.	8,899	1.12%			





International Passenger Traffic

Distribution by Airline for October

		October 2021		October 2020		
	Airline	Passengers	Rate of Total	Passengers	Rate of Total	Rate of Change
AC	AIR CANADA	8,754	1.11%	2,157	0.97%	
SU	AEROFLOT RUSSIAN AIRLINES	8,625	1.09%	1,914	0.86%	
TO	TRANSAVIA FRANCE	8,026	1.01%	3,092	1.40%	159.57%
VS	VIRGIN ATLANTIC AIRWAYS	6,942	0.88%	1,394	0.63%	
QS	SMARTWINGS	6,931	0.87%	164	0.07%	
IB	IBERIA	5,731	0.72%			
LO	LOT POLISH AIRLINES	5,693	0.72%			
A9	GEORGIAN AIRWAYS	5,540	0.70%	196	0.08%	
ET	ETHIOPIAN AIRLINES	5,201	0.65%	2,169	0.98%	139.78%
UX	AIR EUROPA Lineas Aereas	4,705	0.59%			
AZ	ITALYA TRASPORTO AEREO	4,156	0.52%			
U8	TUS AIRWAYS	3,984	0.50%			
TWI	TAILWIND AIRLINES	3,572	0.45%	109	0.04%	
B2	BELAVIA AIRLINE	2,964	0.37%	883	0.40%	
HV	TRANSAVIA	2,604	0.33%			
XC	CORONDON AIRLINES	2,595	0.32%			
TP	AIR PORTUGAL	2,470	0.31%			
9U	AIR MOLDOVA	2,376	0.30%	916	0.41%	159.38%
RO	TAROM - RUMANIAN AIR TRAN	2,185	0.27%			
SN	BRUSSELS AIRLINES	2,141	0.27%			
HY	UZBEKISTAN AIR	1,768	0.22%			





International Passenger Traffic

Distribution by Airline for October

		October 2021		October 2020		
Airline		Passengers	Rate of Total	Passengers	Rate of Total	Rate of Change
FH	FREEBIRD AIRLINES	1,558	0.19%	58	0.02%	
J2	AZERBAIJAN AIRLINES	1,520	0.19%	87	0.03%	
DY	NORWEGIAN AIR SHUTTLE ASA	1,436	0.18%			
EY	ETIHAD AIRWAYS	1,340	0.16%	178	0.08%	
MJ	MYWAY AIRLINES	1,200	0.15%			
AI	AIR INDIA	1,173	0.14%	393	0.17%	198.47%
GF	GULF AIR - BAHREIN	1,045	0.13%			
5F	FLYONE	1,043	0.13%			
ZT	TITAN AIRWAYS Ltd.	965	0.12%			
N4	NORD WIND	950	0.12%			
HM	AIR SEYCHELLES	935	0.11%			
BT	AIR BALTIC	881	0.11%			
CX	CATHAY PACIFIC AIRWAYS	827	0.10%	272	0.12%	
FB	BULGARIA AIR	800	0.10%	2,706	1.22%	-70.43%
AY	FINNAIR	769	0.09%			
MS	EGYPTAIR AIRLINES	638	0.08%			
ENT	ENTER AIR	550	0.06%	52	0.02%	
VN	VIETNAM AIRLINES	544	0.06%			
PLM	WAMOS AIR	335	0.04%			
RJ	ROYAL JORDANIAN	314	0.03%			
D8	NORWEGIAN AIR SHUTTLE	225	0.02%			





International Passenger Traffic

Distribution by Airline for October

		October 2021		October 2020		
Airline		Passengers	Rate of Total	Passengers	Rate of Total	Rate of Change
VY	VUELING AIRLINES S.A.	169	0.02%			
KLJ	KLASJET	108	0.01%			
EW	EUROWINGS	106	0.01%			
	OTHERS	2,636	0.33%	4,820	2.18%	-45.31%
TOTAL		788,607		220,125		





Int'l Accumulated Passenger Traffic

Distribution by Airline

		Accumulated 2021		Accumulated 2020		
Airline		Passengers	Rate of Total	Passengers	Rate of Total	Rate of Change
LY	EL AL ISRAEL AIRLINES	1,071,094	23.81%	836,847	20.39%	27.99%
FR	RYANAIR	319,506	7.10%	230,260	5.61%	38.75%
UA	UNITED AIRLINES	276,351	6.14%	235,478	5.73%	17.35%
6H	ISRAIR AIRLINES	257,766	5.73%	161,827	3.94%	59.28%
TK	TURKISH AIRLINES	246,027	5.46%	275,484	6.71%	-10.69%
W6	WIZZAIR	203,954	4.53%	242,982	5.92%	-16.06%
IZ	ARKIA ISRAELI AIRLINES	178,643	3.97%	39,297	0.95%	
PC	PEGASUS AIRLINES	145,500	3.23%	129,615	3.15%	12.25%
LH	LUFTHANSA	140,788	3.12%	128,827	3.13%	9.28%
EZY	EASYJET	139,492	3.10%	256,124	6.24%	-45.53%
PS	UKRAINE INTL AIR	139,313	3.09%	101,106	2.46%	37.78%
DL	DELTA AIRLINES	126,588	2.81%	67,721	1.65%	86.92%
A3	AEGEAN AIRLINES	91,756	2.03%	76,866	1.87%	19.37%
BZ	BLUE BIRD AIRWAYS	80,290	1.78%	27,282	0.66%	194.29%
FZ	FLYDUBAI	75,591	1.68%			
AA	AMERICAN AIRLINES	74,940	1.66%			
AF	AIR FRANCE	63,622	1.41%	81,482	1.98%	-21.91%
LX	SWISS INT'L AIRLINES	62,432	1.38%	55,640	1.35%	12.20%
OS	AUSTRIAN AIRLINES	60,942	1.35%	48,654	1.18%	25.25%
BA	BRITISH AIRWAYS PLC	48,352	1.07%	73,798	1.79%	-34.48%
KL	K.L.M.	46,199	1.02%	26,316	0.64%	75.55%





Int'l Accumulated Passenger Traffic

Distribution by Airline

		Accumulated 2021		Accumulated 2020		
Airline		Passengers	Rate of Total	Passengers	Rate of Total	Rate of Change
AC	AIR CANADA	43,063	0.95%	38,725	0.94%	11.20%
SU	AEROFLOT RUSSIAN AIRLINES	42,346	0.94%	119,660	2.91%	-64.61%
QS	SMARTWINGS	39,702	0.88%	18,197	0.44%	118.17%
ET	ETHIOPIAN AIRLINES	38,007	0.84%	35,168	0.85%	8.07%
VS	VIRGIN ATLANTIC AIRWAYS	35,712	0.79%	28,114	0.68%	27.02%
TO	TRANSAVIA FRANCE	34,706	0.77%	68,699	1.67%	-49.48%
LO	LOT POLISH AIRLINES	28,249	0.62%	46,302	1.12%	-38.98%
A9	GEORGIAN AIRWAYS	27,456	0.61%	23,240	0.56%	18.14%
B2	BELAVIA AIRLINE	23,397	0.52%	24,325	0.59%	-3.81%
IB	IBERIA	23,351	0.51%	30,252	0.73%	-22.81%
9U	AIR MOLDOVA	23,239	0.51%	13,376	0.32%	73.73%
RO	TAROM - RUMANIAN AIR TRAN	19,066	0.42%	18,596	0.45%	2.52%
TWI	TAILWIND AIRLINES	16,242	0.36%	12,312	0.30%	31.92%
SN	BRUSSELS AIRLINES	15,783	0.35%	22,958	0.55%	-31.25%
UX	AIR EUROPA Lineas Aereas	15,618	0.34%			
XC	CORONDON AIRLINES	14,176	0.31%	7,134	0.17%	98.71%
FH	FREEBIRD AIRLINES	14,156	0.31%	7,401	0.18%	91.27%
U8	TUS AIRWAYS	13,799	0.30%			
AZ	ITALYA TRASPORTO AEREO	13,749	0.30%	55,578	1.35%	-75.26%
FB	BULGARIA AIR	13,155	0.29%	18,800	0.45%	-30.02%
BUC	EUROPEAN AIR CHARTER	11,999	0.26%	1,617	0.03%	





Int'l Accumulated Passenger Traffic

Distribution by Airline

		Accumulated 2021		Accumulated 2020		
Airline		Passengers	Rate of Total	Passengers	Rate of Total	Rate of Change
HV	TRANSAVIA	10,664	0.23%	32,925	0.80%	-67.61%
HM	AIR SEYCHELLES	9,222	0.20%	2,887	0.07%	
5F	FLYONE	7,868	0.17%	112		
MJ	MYWAY AIRLINES	7,697	0.17%	7,166	0.17%	7.40%
EAF	ELECTRA AIRWAYS	6,820	0.15%	767	0.01%	
J2	AZERBAIJAN AIRLINES	6,515	0.14%	3,605	0.08%	80.72%
AI	AIR INDIA	6,252	0.13%	21,480	0.52%	-70.89%
EY	ETIHAD AIRWAYS	6,228	0.13%	178		
BT	AIR BALTIC	5,795	0.12%	1,681	0.04%	
HY	UZBEKISTAN AIR	5,694	0.12%	6,593	0.16%	-13.63%
DY	NORWEGIAN AIR SHUTTLE ASA	4,644	0.10%	5,905	0.14%	-21.35%
AY	FINNAIR	4,085	0.09%	4,176	0.10%	-2.17%
TP	AIR PORTUGAL	3,732	0.08%	12,544	0.30%	-70.24%
OB	BLUE AIR AVIATION	3,606	0.08%	11,669	0.28%	-69.09%
N4	NORD WIND	3,577	0.07%			
7W	WIND ROSE AVIATION Co. Lt	3,201	0.07%	114		
CY	CYPRUS AIRWAYS	2,790	0.06%	9,192	0.22%	-69.64%
PQ	SKYUP AIRLINES	2,561	0.05%	10,427	0.25%	-75.43%
CX	CATHAY PACIFIC AIRWAYS	2,394	0.05%	18,744	0.45%	-87.22%
NO	NEOS	2,295	0.05%			
ENT	ENTER AIR	1,517	0.03%	2,161	0.05%	-29.80%





Int'l Accumulated Passenger Traffic

Distribution by Airline

		Accumulated 2021		Accumulated 2020		
Airline		Passengers	Rate of Total	Passengers	Rate of Total	Rate of Change
RJ	ROYAL JORDANIAN	1,241	0.02%	27,392	0.66%	-95.46%
GF	GULF AIR - BAHREIN	1,160	0.02%			
7B	BEES AIRLINE	1,087	0.02%			
VY	VUELING AIRLINES S.A.	1,045	0.02%	14,964	0.36%	-93.01%
5W	WIZZ AIR ABU DHABI	1,041	0.02%			
ZT	TITAN AIRWAYS Ltd.	989	0.02%	29		
MS	EGYPTAIR AIRLINES	638	0.01%			
VN	VIETNAM AIRLINES	544	0.01%	600	0.01%	-9.33%
JAV	JORDANIAN AVIATION	496	0.01%	2,590	0.06%	-80.84%
HU	HAINAN AIRLINES	440		7,709	0.18%	-94.29%
PLM	WAMOS AIR	335				
ASY	ROYAL AUSTRALIAN AIR FORCE	293				
KLJ	KLASJET	264		54		
PVG	PRIVILEG STYLE	245		511	0.01%	-52.05%
D8	NORWEGIAN AIR SHUTTLE	225		15,916	0.38%	-98.58%
CEF	CZECH A/F	223		24		
TB	JET AIRFLY	200				
KM	AIR MALTA	146		4,609	0.11%	-96.83%
B0	DREAMJET	128				
UL	SRILANKA AIRLINES	119		168		-29.16%
X5	AIR EUROPA EXPRESS	109				





Int'l Accumulated Passenger Traffic

Distribution by Airline

Airline		Accumulated 2021		Accumulated 2020		Rate of Change
		Passengers	Rate of Total	Passengers	Rate of Total	
EW	EUROWINGS	106				
	OTHERS	23,716	0.52%	190,717	4.64%	-87.56%
TOTAL		4,498,064		4,103,669		9.61%





International Passenger Traffic

Distribution by Israeli Airlines for October

		October 2021		October 2020		
Airlines		Passengers	Rate of Total	Passengers	Rate of Total	Rate of Change
LY	EL AL ISRAEL AIRLINES	167,513	21.24%	21,533	9.78%	
6H	ISR AIR AIRLINES	38,384	4.86%	31,589	14.35%	21.51%
IZ	ARKIA ISRAELI AIRLINES	33,091	4.19%	4,534	2.05%	
	OTHERS	472	0.05%	385	0.17%	22.59%
TOTAL		239,460	30.36%	58,041	26.36%	

Int'l Accumulated Passenger Traffic

Distribution by Israeli Airlines

		Accumulated 2021		Accumulated 2020		
Airlines		Passengers	Rate of Total	Passengers	Rate of Total	Rate of Change
LY	EL AL ISRAEL AIRLINES	1,071,094	23.81%	836,847	20.39%	27.99%
6H	ISR AIR AIRLINES	257,766	5.73%	161,827	3.94%	59.28%
IZ	ARKIA ISRAELI AIRLINES	178,643	3.97%	39,297	0.95%	
	OTHERS	5,392	0.11%	2,639	0.06%	104.31%
TOTAL		1,512,895	33.63%	1,040,610	25.35%	45.38%





International Passenger Traffic

Distribution by Countries for October

Countries	October 2021		October 2020		
	Passengers	Rate of Total	Passengers	Total of Rate	Rate of Change
UNITED STATES	112,641	14.28%	27,695	12.58%	
TURKEY	91,101	11.55%	48,857	22.19%	86.46%
FRANCE	55,125	6.99%	11,680	5.30%	
GREECE	46,370	5.87%	61,317	27.85%	-24.37%
UNITED KINGDOM	44,393	5.62%	11,071	5.02%	
ITALY	36,499	4.62%	2,051	0.93%	
AUSTRIA	35,620	4.51%	2,748	1.24%	
GERMANY	35,326	4.47%	8,266	3.75%	
GEORGIA	30,054	3.81%	867	0.39%	
HUNGARY	29,398	3.72%	219	0.09%	
CYPRUS	28,323	3.59%	1,043	0.47%	
UNITED ARAB EMIRATES	27,628	3.50%	704	0.31%	
UKRAINE	25,000	3.17%	6,978	3.17%	
CZECH REPUBLIC	23,169	2.93%	195	0.08%	
SPAIN	21,235	2.69%	120	0.05%	
NETHERLANDS	19,497	2.47%	236	0.10%	
SWITZERLAND	16,928	2.14%	1,798	0.81%	
RUSSIAN FEDERATION	16,318	2.06%	2,267	1.02%	
ROMANIA	15,614	1.97%	4		
POLAND	11,540	1.46%			
CANADA	10,180	1.29%	2,163	0.98%	
BULGARIA	5,329	0.67%	11,417	5.18%	-53.32%





International Passenger Traffic

Distribution by Countries for October

Countries	October 2021		October 2020		
	Passengers	Rate of Total	Passengers	Total of Rate	Rate of Change
ETHIOPIA	5,210	0.66%	2,169	0.98%	140.20%
BELGIUM	4,837	0.61%	189	0.08%	
MONTENEGRO	4,738	0.60%			
PORTUGAL	4,736	0.60%	1		
MOROCCO	3,752	0.47%			
MOLDOVA	3,432	0.43%	916	0.41%	
AZERBAIJAN	3,043	0.38%	156	0.07%	
BELARUS	2,970	0.37%	883	0.40%	
THAILAND	2,840	0.36%	534	0.24%	
UZBEKISTAN	1,857	0.23%	7		
LITHUANIA	1,838	0.23%	9		
DENMARK	1,579	0.20%			
SERBIA	1,270	0.16%	10,754	4.88%	-88.19%
INDIA	1,173	0.14%	399	0.18%	193.98%
CHINA	1,067	0.13%	535	0.24%	99.43%
BAHRAIN	1,045	0.13%	153	0.06%	
FINLAND	902	0.11%			
LATVIA	881	0.11%	1		
SEYCHELLES	857	0.10%			
TANZANIA	745	0.09%			
EGYPT	740	0.09%	232	0.10%	
VIETNAM	544	0.06%			





International Passenger Traffic

Distribution by Countries for October

Countries	October 2021		October 2020		
	Passengers	Rate of Total	Passengers	Total of Rate	Rate of Change
JORDAN	383	0.04%	705	0.32%	-45.67%
SLOVAKIA	251	0.03%	93	0.04%	169.89%
CAMBODIA	243	0.03%			
SWEDEN	107	0.01%			
OTHERS	279	0.03%	693	0.31%	-59.74%
TOTAL	788,607		220,125		





Int'l Accumulated Passenger Traffic

Distribution by Countries

Countries	Accumulated 2021		Accumulated 2020		
	Passengers	Rate of Total	Passengers	Rate of Total	Rate of Change
UNITED STATES	784,817	17.44%	475,377	11.58%	65.09%
GREECE	461,135	10.25%	178,755	4.35%	157.97%
TURKEY	437,536	9.72%	444,173	10.82%	-1.49%
FRANCE	277,513	6.16%	288,842	7.03%	-3.92%
GERMANY	237,554	5.28%	277,216	6.75%	-14.30%
UKRAINE	224,487	4.99%	137,894	3.36%	62.79%
UNITED KINGDOM	192,760	4.28%	271,079	6.60%	-28.89%
GEORGIA	174,828	3.88%	61,068	1.48%	186.28%
AUSTRIA	159,155	3.53%	116,454	2.83%	36.66%
CYPRUS	151,881	3.37%	78,487	1.91%	93.51%
UNITED ARAB EMIRATES	148,634	3.30%	1,014	0.02%	
ITALY	137,799	3.06%	182,222	4.44%	-24.37%
SWITZERLAND	104,097	2.31%	117,419	2.86%	-11.34%
ROMANIA	101,282	2.25%	119,582	2.91%	-15.30%
HUNGARY	100,040	2.22%	99,101	2.41%	0.94%
NETHERLANDS	89,534	1.99%	106,007	2.58%	-15.53%
BULGARIA	85,823	1.90%	110,622	2.69%	-22.41%
CZECH REPUBLIC	82,426	1.83%	47,059	1.14%	75.15%
RUSSIAN FEDERATION	80,099	1.78%	199,544	4.86%	-59.85%
SPAIN	65,251	1.45%	152,099	3.70%	-57.09%
POLAND	57,555	1.27%	130,400	3.17%	-55.86%
CANADA	47,371	1.05%	52,206	1.27%	-9.26%





Int'l Accumulated Passenger Traffic

Distribution by Countries

Countries	Accumulated 2021		Accumulated 2020		
	Passengers	Rate of Total	Passengers	Rate of Total	Rate of Change
ETHIOPIA	38,279	0.85%	35,518	0.86%	7.77%
MOLDOVA	32,469	0.72%	15,075	0.36%	115.38%
BELGIUM	30,407	0.67%	46,586	1.13%	-34.72%
MONTENEGRO	25,046	0.55%	99		
BELARUS	23,635	0.52%	24,513	0.59%	-3.58%
SEYCHELLES	18,055	0.40%	3,979	0.09%	
THAILAND	17,428	0.38%	42,422	1.03%	-58.91%
PORTUGAL	11,914	0.26%	19,645	0.47%	-39.35%
SERBIA	10,268	0.22%	20,442	0.49%	-49.77%
AZERBAIJAN	9,153	0.20%	9,017	0.21%	1.50%
CHINA	8,303	0.18%	41,853	1.01%	-80.16%
LITHUANIA	7,987	0.17%	15,005	0.36%	-46.77%
INDIA	7,400	0.16%	41,221	1.00%	-82.04%
MOROCCO	6,437	0.14%	2		
UZBEKISTAN	6,221	0.13%	7,177	0.17%	-13.32%
LATVIA	5,804	0.12%	1,819	0.04%	
TANZANIA	4,903	0.10%	3,606	0.08%	35.96%
DENMARK	4,717	0.10%	7,313	0.17%	-35.49%
FINLAND	4,229	0.09%	11,342	0.27%	-62.71%
ICELAND	3,314	0.07%	33		
SLOVAKIA	3,083	0.06%	711	0.01%	
JORDAN	3,081	0.06%	31,270	0.76%	-90.14%





Int'l Accumulated Passenger Traffic

Distribution by Countries

Countries	Accumulated 2021		Accumulated 2020		
	Passengers	Rate of Total	Passengers	Rate of Total	Rate of Change
ALBANIA	2,985	0.06%	184		
SLOVENIA	2,334	0.05%	29		
EGYPT	1,948	0.04%	10,524	0.25%	-81.48%
BAHRAIN	1,401	0.03%	187		
CROATIA	625	0.01%	6,500	0.15%	-90.38%
KAZAKHSTAN	590	0.01%	266		121.80%
SWEDEN	582	0.01%	5,915	0.14%	-90.16%
MEXICO	572	0.01%	273		109.52%
VIETNAM	544	0.01%	260		109.23%
MALDIVES	259				
CAMBODIA	243				
EQUATORIAL GUINEA	235				
PANAMA	200		177		12.99%
GHANA	197		45		
IRELAND	196		311		-36.97%
FAROEISLANDS	184				
BRAZIL	134		15,433	0.37%	-99.13%
MALTA	129		4,697	0.11%	-97.25%
SOUTH AFRICA	109		12,876	0.31%	-99.15%
GIBRALTAR	105		16		
OTHERS	782	0.01%	20,708	0.50%	-96.22%
TOTAL	4,498,064		4,103,669		9.61%





International Passenger Traffic

Distribution by First Destination for October

Destination	October 2021		October 2020		
	Passengers	Rate of Total	Passengers	Rate of Total	Rate of Change
NEW YORK - J.F.KENNEDY	49,147	6.23%	8,401	3.81%	
ISTANBUL	47,870	6.07%	15,294	6.94%	
PARIS-CHARLES DE GAULLE	39,939	5.06%	8,463	3.84%	
NEW YORK - NEWARK	37,150	4.71%	14,269	6.48%	160.35%
VIENNA	35,552	4.50%	2,701	1.22%	
LONDON - HEATHROW	32,162	4.07%	6,466	2.93%	
ISTANBUL-SABIHA GOKCHEN	31,159	3.95%	29,224	13.27%	6.62%
BUDAPEST	28,321	3.59%	219	0.09%	
DUBAI	25,831	3.27%	31	0.01%	
ATHENS	25,348	3.21%	34,450	15.65%	-26.42%
PRAGUE-RUZYNE	23,086	2.92%	143	0.06%	
KIEV KYIV-BORISPOL	22,113	2.80%	5,740	2.60%	
AMSTERDAM	19,497	2.47%	236	0.10%	
BATUMI	17,697	2.24%			
PAPHOS	17,649	2.23%	451	0.20%	
ROME - FIUMICINO	16,599	2.10%	679	0.30%	
FRANKFURT	16,194	2.05%	6,640	3.01%	143.88%
BUCHAREST - OTOPENI	14,323	1.81%	4		
ZURICH	13,481	1.70%	1,798	0.81%	
MADRID	12,572	1.59%	119	0.05%	
TBILISI	12,354	1.56%	867	0.39%	
ANTALYA	11,604	1.47%	4,075	1.85%	184.76%





International Passenger Traffic

Distribution by First Destination for October

Destination	October 2021		October 2020		
	Passengers	Rate of Total	Passengers	Rate of Total	Rate of Change
LARNACA	10,674	1.35%	592	0.26%	
BERLIN BRANDENBURG INTL	9,947	1.26%	187	0.08%	
MILAN-MALPENSA	9,347	1.18%	325	0.14%	
MIAMI INTERNATIONAL	9,094	1.15%	229	0.10%	
LUTON	8,916	1.13%	4,505	2.04%	97.91%
WARSAW	8,737	1.10%			
BARCELONA	8,641	1.09%	1		
MOSCOW	8,628	1.09%	1,915	0.86%	
TORONTO	8,597	1.09%	2,162	0.98%	
PARIS-ORLY	7,933	1.00%	2,994	1.36%	164.96%
SAN FRANCISCO	6,759	0.85%	2,714	1.23%	149.04%
MOSCOW-DOMODEDOVO	6,613	0.83%	341	0.15%	
LOS ANGELES	5,676	0.71%	202	0.09%	
BERGAMO	5,670	0.71%	949	0.43%	
ADDIS ABABA	5,210	0.66%	2,169	0.98%	140.20%
RHODES-PARADISI	4,924	0.62%	12,207	5.54%	-59.66%
KHANIA-SOUDABAY	4,804	0.60%	7		
BRUSSELS	4,761	0.60%	8		
TIVAT	4,738	0.60%			
LISBON	4,736	0.60%			
MUNICH	4,702	0.59%	38	0.01%	
CHICAGO - O'HARE	4,614	0.58%	1,538	0.69%	200.00%





International Passenger Traffic

Distribution by First Destination for October

Destination	October 2021		October 2020		
	Passengers	Rate of Total	Passengers	Rate of Total	Rate of Change
SOFIA	4,253	0.53%	7,125	3.23%	-40.30%
THESSALONIKI	4,081	0.51%	6,212	2.82%	-34.30%
CHISINAU	3,432	0.43%	916	0.41%	
BAKU HEYDAR ALIYEV INT'L	3,041	0.38%	156	0.07%	
MINSK	2,970	0.37%	883	0.40%	
MARRAKESH	2,940	0.37%			
PHUKET	2,840	0.36%			
ODESA	2,784	0.35%	846	0.38%	
MANCHESTER	2,727	0.34%			
KRAKOW	2,606	0.33%			
TREVISO	2,511	0.31%			
CORFU	2,472	0.31%	394	0.17%	
MARSEILLE	2,430	0.30%			
BADEN BADEN	2,338	0.29%			
GENEVA	2,290	0.29%			
SANTORINI	2,280	0.28%	27	0.01%	
HERAKLION	2,263	0.28%	7,526	3.41%	-69.93%
LYON - SATOLAS	2,069	0.26%	98	0.04%	
NICE	2,059	0.26%	112	0.05%	
NAPLES-CAPODICHINO	2,054	0.26%			
MEMMINGEN	1,919	0.24%	293	0.13%	
TASHKENT	1,857	0.23%	7		





International Passenger Traffic

Distribution by First Destination for October

Destination	October 2021		October 2020		
	Passengers	Rate of Total	Passengers	Rate of Total	Rate of Change
VILNIUS INTL	1,814	0.23%	9		
ABU DHABI	1,599	0.20%	178	0.08%	
MONTREAL - DORVAL	1,583	0.20%			
COPENHAGEN KASTRUP	1,579	0.20%			
BELGRADE	1,270	0.16%	10,754	4.88%	-88.19%
DELHI	1,173	0.14%	393	0.17%	198.47%
BASEL	1,117	0.14%			
DEBRECEN	1,077	0.13%			
VARNA	1,076	0.13%	3,511	1.59%	-69.35%
BAHRAIN	1,045	0.13%	153	0.06%	
ST. PETERSBURG	953	0.12%			
HELSINKI	902	0.11%			
RIGA	881	0.11%	1		
MAHE SEYCHELLES INTL	857	0.10%			
HONG KONG INT'L	832	0.10%	274	0.12%	
CASABLANCA-MOHAMMED V	794	0.10%			
ZANZIBAR	745	0.09%			
CAIRO INTERNATIONAL	697	0.08%	75	0.03%	
CLUJ NAPOCA	686	0.08%			
IASI	579	0.07%			
NANTES	335	0.04%			
AMMAN (QUEEN ALIA INT'L)	332	0.04%	661	0.30%	-49.77%





International Passenger Traffic

Distribution by First Destination for October

Destination	October 2021		October 2020		
	Passengers	Rate of Total	Passengers	Rate of Total	Rate of Change
BORDEAUX	297	0.03%			
NOI BAI HANOI INT	273	0.03%			
ANKARA-ESENBUGA	273	0.03%			
VAN DON INTERNATIONAL AIR	271	0.03%			
PHNOM PENH INTERNATIONAL	243	0.03%			
SHANGHAI PUDONG	235	0.02%	261	0.11%	-9.96%
LONDON - GATWICK	206	0.02%			
BRATISLAVA	205	0.02%	93	0.04%	120.43%
LONDON -STANSTED	181	0.02%	11		
BARI -PALESE MACCHIE	180	0.02%			
PREVEZA	141	0.01%	7		
HOUSTON INTERCONTINENTAL	130	0.01%	103	0.04%	26.21%
DUBAI AL MAKTOUM INT AP	123	0.01%	417	0.18%	-70.50%
DALAMAN	122	0.01%	135	0.06%	-9.62%
WARSAW- MODLIN	111	0.01%			
DUSSELDORF	106	0.01%			
OTHERS	1,999	0.25%	5,141	2.33%	-61.11%
TOTAL	788,607		220,125		





Int'l Accumulated Passenger Traffic

Distribution by First Destination

Destination	Accumulated 2021		Accumulated 2020		Rate of Change
	Passengers	Rate of Total	Passengers	Rate of Total	
NEW YORK - J.F.KENNEDY	322,114	7.16%	132,381	3.22%	143.32%
NEW YORK - NEWARK	265,298	5.89%	218,607	5.32%	21.35%
PARIS-CHARLES DE GAULLE	212,294	4.71%	169,912	4.14%	24.94%
KIEV KYIV-BORISPOL	188,364	4.18%	101,698	2.47%	85.21%
ISTANBUL	188,288	4.18%	238,785	5.81%	-21.14%
ISTANBUL-SABIHA GOKCHEN	160,074	3.55%	155,713	3.79%	2.80%
ATHENS	158,254	3.51%	126,460	3.08%	25.14%
VIENNA	157,923	3.51%	113,536	2.76%	39.09%
LONDON - HEATHROW	156,146	3.47%	149,446	3.64%	4.48%
DUBAI	139,532	3.10%	54		
FRANKFURT	133,898	2.97%	108,949	2.65%	22.89%
BATUMI	100,030	2.22%	17,352	0.42%	
BUDAPEST	98,963	2.20%	92,897	2.26%	6.52%
BUCHAREST - OTOPENI	90,311	2.00%	99,521	2.42%	-9.25%
AMSTERDAM	89,408	1.98%	98,700	2.40%	-9.41%
RHODES-PARADISI	86,555	1.92%	15,639	0.38%	
HERAKLION	85,735	1.90%	12,870	0.31%	
LARNACA	83,077	1.84%	42,674	1.03%	94.67%
PRAGUE-RUZYNE	82,203	1.82%	46,982	1.14%	74.96%
ANTALYA	78,261	1.73%	47,871	1.16%	63.48%
ZURICH	77,936	1.73%	74,916	1.82%	4.03%
TBILISI	74,794	1.66%	43,716	1.06%	71.09%





Int'l Accumulated Passenger Traffic

Distribution by First Destination

Destination	Accumulated 2021		Accumulated 2020		
	Passengers	Rate of Total	Passengers	Rate of Total	Rate of Change
PAPHOS	68,804	1.52%	35,783	0.87%	92.28%
MIAMI INTERNATIONAL	65,262	1.45%	19,373	0.47%	
ROME - FIUMICINO	58,368	1.29%	104,437	2.54%	-44.11%
SAN FRANCISCO	57,939	1.28%	53,185	1.29%	8.93%
BERLIN BRANDENBURG INTL	49,502	1.10%	187		
LOS ANGELES	47,046	1.04%	15,910	0.38%	195.70%
SOFIA	46,255	1.02%	82,310	2.00%	-43.80%
MADRID	42,513	0.94%	98,999	2.41%	-57.05%
MOSCOW	42,359	0.94%	119,505	2.91%	-64.55%
WARSAW	41,811	0.92%	65,474	1.59%	-36.14%
TORONTO	40,463	0.89%	52,085	1.26%	-22.31%
ADDIS ABABA	38,279	0.85%	35,518	0.86%	7.77%
MILAN-MALPENSA	36,194	0.80%	39,608	0.96%	-8.61%
THESSALONIKI	34,896	0.77%	21,388	0.52%	63.15%
PARIS-ORLY	34,538	0.76%	61,874	1.50%	-44.18%
MUNICH	33,989	0.75%	55,610	1.35%	-38.87%
MOSCOW-DOMODEDOVO	33,366	0.74%	16,444	0.40%	102.90%
CHISINAU	32,469	0.72%	15,075	0.36%	115.38%
BRUSSELS	30,018	0.66%	32,792	0.79%	-8.45%
LUTON	27,700	0.61%	91,574	2.23%	-69.75%
CORFU	26,276	0.58%	1,159	0.02%	
CHICAGO - O'HARE	25,213	0.56%	3,151	0.07%	





Int'l Accumulated Passenger Traffic

Distribution by First Destination

Destination	Accumulated 2021		Accumulated 2020		Rate of Change
	Passengers	Rate of Total	Passengers	Rate of Total	
TIVAT	24,774	0.55%	66		
MINSK	23,635	0.52%	24,427	0.59%	-3.24%
BARCELONA	22,267	0.49%	50,666	1.23%	-56.05%
BERGAMO	22,103	0.49%	13,397	0.32%	64.98%
MIKONOS	20,563	0.45%	504	0.01%	
ODESA	19,846	0.44%	15,951	0.38%	24.41%
BURGAS	19,769	0.43%	6,229	0.15%	
VARNA	19,695	0.43%	20,062	0.48%	-1.82%
KHANIA-SOUDABAY	18,747	0.41%	18		
MAHE SEYCHELLES INTL	18,055	0.40%	3,979	0.09%	
GENEVA	16,555	0.36%	31,175	0.75%	-46.89%
SANTORINI	14,893	0.33%	49		
KRAKOW	14,429	0.32%	29,790	0.72%	-51.56%
NICE	13,022	0.28%	6,934	0.16%	87.79%
LISBON	11,822	0.26%	19,597	0.47%	-39.67%
TREVISO	10,762	0.23%			
BADEN BADEN	10,614	0.23%	6,967	0.16%	52.34%
BELGRADE	10,268	0.22%	20,442	0.49%	-49.77%
PHUKET	9,657	0.21%			
DALAMAN	9,571	0.21%	1,535	0.03%	
ZAKYNTHOS	9,521	0.21%	4		
BASEL	9,369	0.20%	11,261	0.27%	-16.80%





Int'l Accumulated Passenger Traffic

Distribution by First Destination

Destination	Accumulated 2021		Accumulated 2020		
	Passengers	Rate of Total	Passengers	Rate of Total	Rate of Change
BAKU HEYDAR ALIYEV INT'L	9,085	0.20%	9,013	0.21%	0.79%
MEMMINGEN	8,936	0.19%	6,723	0.16%	32.91%
MARSEILLE	8,856	0.19%	15,410	0.37%	-42.53%
VILNIUS INTL	7,907	0.17%	14,366	0.35%	-44.96%
KHARKOV	7,893	0.17%	5,807	0.14%	35.92%
MANCHESTER	7,891	0.17%	13,254	0.32%	-40.46%
BANGKOK INTL.-SUARNABHUM	7,771	0.17%	42,103	1.02%	-81.54%
ABU DHABI	7,690	0.17%	365		
LYON - SATOLAS	7,656	0.17%	14,415	0.35%	-46.88%
CLUJ NAPOCA	7,212	0.16%	5,612	0.13%	28.51%
LVOV	6,990	0.15%	4,949	0.12%	41.24%
MONTREAL - DORVAL	6,860	0.15%	5		
DELHI	6,608	0.14%	21,775	0.53%	-69.65%
TASHKENT	6,221	0.13%	7,164	0.17%	-13.16%
RIGA	5,804	0.12%	1,819	0.04%	
MARRAKESH	5,416	0.12%			
SHANGHAI PUDONG	4,936	0.10%	268		
COPENHAGEN KASTRUP	4,486	0.09%	7,307	0.17%	-38.60%
HELSINKI	4,229	0.09%	4,176	0.10%	1.26%
PREVEZA	3,867	0.08%	104		
ZANZIBAR	3,814	0.08%	3,321	0.08%	14.84%
ST. PETERSBURG	3,735	0.08%	19,055	0.46%	-80.39%





Int'l Accumulated Passenger Traffic

Distribution by First Destination

Destination	Accumulated 2021		Accumulated 2020		
	Passengers	Rate of Total	Passengers	Rate of Total	Rate of Change
IASI	3,613	0.08%	6,477	0.15%	-44.21%
NAPLES-CAPODICHINO	3,472	0.07%	5,359	0.13%	-35.21%
REYKJAVIK	3,305	0.07%	33		
TIRANA	2,985	0.06%	184		
HONG KONG INT'L	2,927	0.06%	28,402	0.69%	-89.69%
BRATISLAVA	2,904	0.06%	221		
CATANIA FONTANAROSSA	2,674	0.05%	32		
AMMAN (QUEEN ALIA INT'L)	2,635	0.05%	30,882	0.75%	-91.46%
LJUBLJANA	2,334	0.05%	29		
VILLAFRANCA-VERONA	2,143	0.04%	275		
BAHRAIN	1,401	0.03%	187		
HOUSTON INTERCONTINENTAL	1,275	0.02%	748	0.01%	70.45%
KIEV-ZHULYANY	1,233	0.02%	22		
CAIRO INTERNATIONAL	1,206	0.02%	8,260	0.20%	-85.39%
SALZBURG	1,116	0.02%	2,904	0.07%	-61.57%
BARI -PALESE MACCHIE	1,115	0.02%	22		
DEBRECEN	1,077	0.02%	6,204	0.15%	-82.64%
KILIMANJARO	1,051	0.02%	285		
CASABLANCA-MOHAMMED V	935	0.02%	2		
KOS	929	0.02%	45		
AL BATEEN EXECUTIVE AP	730	0.01%	78		
BODRUM	699	0.01%	104		





Int'l Accumulated Passenger Traffic

Distribution by First Destination

Destination	Accumulated 2021		Accumulated 2020		
	Passengers	Rate of Total	Passengers	Rate of Total	Rate of Change
DUBAI AL MAKTOUM INT AP	659	0.01%	517	0.01%	27.46%
STOCKHOLM-ARLANDA	561	0.01%	5,909	0.14%	-90.50%
SHARM EL SHEIKH	561	0.01%	410		36.82%
CANCUN- MEXICO	532	0.01%			
RZESZOW-JASIONKA	508	0.01%	1,118	0.02%	-54.56%
MUMBAI	473	0.01%	12,900	0.31%	-96.33%
MOSCOW-VNUKOVO	449		568	0.01%	-20.95%
ALMATY	440		259		69.88%
ANKARA-ESENBUGA	434		42		
KATOWICE	391		10,523	0.25%	-96.28%
LIEGE	385		383		0.52%
NANTES	335		2,990	0.07%	-88.79%
SKIATHOS	335		13		
BERLIN -SCHOENEFELD	320		47,113	1.14%	-99.32%
BANGALORE	319				
BORDEAUX	299		4,944	0.12%	-93.95%
NOI BAI HANOI INT	273		260		5.00%
PODGORICA	272		33		
VAN DON INTERNATIONAL AIR	271				
LONDON -STANSTED	260		7,191	0.17%	-96.38%
MALE INT'L	259				
BEIJING	254		8,697	0.21%	-97.07%





Int'l Accumulated Passenger Traffic

Distribution by First Destination

Destination	Accumulated 2021		Accumulated 2020		
	Passengers	Rate of Total	Passengers	Rate of Total	Rate of Change
ZAGREB	249		3,200	0.07%	-92.21%
PHNOM PENH INTERNATIONAL	243				
ANDREWS	232		384		-39.58%
BILLUND	230		4		
KBELY(MIL)	223		24		
WROCLAW	212		3,538	0.08%	-94.00%
BATA AIRPORT	210				
LONDON - GATWICK	206		9,074	0.22%	-97.72%
PANAMA CITY	200		177		12.99%
ACCRA-KOTOKA	197		45		
SHANNON	189		245		-22.85%
CHENGDU	186		2,551	0.06%	-92.70%
VAGAR AIRPORT	184				
EDINBURGH	162				
IZMIR-ADNAN MENDERES	161		7		
SAMOS	143		5		
ASTANA	137				
SAO PAULO (GUARULHOS INT')	134		15,433	0.37%	-99.13%
MALTA	129		4,697	0.11%	-97.25%
LILLE-LESQUINN	121				
ROTTERDAM	117		21		
KALAMATA	116		239		-51.46%





Int'l Accumulated Passenger Traffic

Distribution by First Destination

Destination	Accumulated 2021		Accumulated 2020		
	Passengers	Rate of Total	Passengers	Rate of Total	Rate of Change
WARSAW- MODLIN	113		12,084	0.29%	-99.06%
KLAGENFURT	112		3		
DUSSELDORF	108		697	0.01%	-84.50%
ZADAR	108		48		125.00%
HURGHADA	107				
JOHANNESBURG	105		12,876	0.31%	-99.18%
GIBRALTAR	105		16		
PLOVDIV	104		2,021	0.04%	-94.85%
GLASGOW	102		306		-66.66%
OTHERS	6,252	0.13%	251,165	6.12%	-97.51%
TOTAL	4,498,064		4,103,669		9.61%



Cargo Activity





Cargo Handling

Distribution by Transporter

Transporter	October 2021 (Ton)	October 2020 (Ton)	Rate of Change
Cargo on Passenger Aircrafts - Incoming	6,452	3,078	109.61%
Cargo on Passenger Aircrafts - Outgoing	5,712	2,916	95.88%
Total Cargo on Passenger Aircrafts	12,165	5,994	102.95%
Cargo on Cargo Aircrafts - Incoming	14,470	13,447	7.60%
Cargo on Cargo Aircrafts - Outgoing	7,726	7,473	3.38%
Total Cargo on Cargo Aircrafts	22,196	20,920	6.09%
Total	34,361	26,914	27.66%

Distribution by Months

Month	2021 (ton)			2020 (ton)			Rate of Change
	Cargo	Mail	Total	Cargo	Mail	Total	
January	28,571	632	29,203	28,568	1,395	29,964	-2.53%
February	26,508	322	26,830	28,188	1,033	29,221	-8.18%
March	31,396	546	31,942	26,511	535	27,047	18.09%
April	28,779	745	29,524	20,673	116	20,790	42.01%
May	29,512	544	30,056	26,974	112	27,086	10.96%
June	30,843	586	31,429	24,918	216	25,134	25.04%
July	30,404	682	31,086	23,733	331	24,065	29.17%
August	33,558	582	34,139	24,252	465	24,718	38.11%
September	28,160	602	28,763	23,039	526	23,566	22.05%
October	33,641	720	34,361	26,262	652	26,914	27.66%
Total	301,372	5,961	307,333	253,118	5,381	258,505	18.88%





Cargo Handling on Passenger Aircrafts

Distribution by Airline for October

		October 2021				October 2020				
Airline	Incoming Cargo (Ton)	Outgoing Cargo (Ton)	Cargo (Ton)	Rate of Total	Incoming Cargo (Ton)	Outgoing Cargo (Ton)	Cargo (Ton)	Rate of Total	Rate of Change	
LY EL AL ISRAEL AIRLINES	1,203	1,475	2,677	22.00%	326	444	770	12.84%		
UA UNITED AIRLINES	831	1,283	2,114	17.37%	923	1,076	1,999	33.35%	5.75%	
TK TURKISH AIRLINES	1,159	137	1,296	10.65%	388	91	478	7.97%	171.12%	
DL DELTA AIRLINES	313	532	845	6.94%	240	373	613	10.22%	37.84%	
LX SWISS INT'L AIRLINES	463	279	742	6.09%	195	176	371	6.18%	100.00%	
AA AMERICAN AIRLINES	292	445	736	6.05%						
AF AIR FRANCE	369	199	568	4.66%	10	38	48	0.80%		
AC AIR CANADA	211	304	515	4.23%	102	179	281	4.68%	83.27%	
VS VIRGIN ATLANTIC AIRWAYS	368	128	496	4.07%	186	82	268	4.47%	85.07%	
ET ETHIOPIAN AIRLINES	208	146	354	2.90%	121	81	201	3.35%	76.11%	
BA BRITISH AIRWAYS PLC	175	176	351	2.88%	401	214	615	10.26%	-42.92%	
IB IBERIA	149	77	226	1.85%						
EY ETIHAD AIRWAYS	100	111	211	1.73%	9	9	18	0.30%		
SU AEROFLOT RUSSIAN AIRLINES	55	136	191	1.57%	56	63	119	1.98%	60.50%	
CX CATHAY PACIFIC AIRWAYS	97	58	155	1.27%	18		18	0.30%		
PC PEGASUS AIRLINES	70	51	121	0.99%	29	45	74	1.23%	63.51%	
FZ FLYDUBAI	99	14	113	0.92%						
UX AIR EUROPA Lineas Aereas	55	26	81	0.66%						
AI AIR INDIA	28	31	59	0.48%	8	6	14	0.23%		
LH LUFTHANSA	36	18	54	0.44%	16	10	26	0.43%	107.69%	
PS UKRAINE INTL AIR	43	7	50	0.41%	21	5	26	0.43%	92.30%	
A3 AEGEAN AIRLINES	33	4	38	0.31%	6	2	7	0.11%		





Cargo Handling on Passenger Aircrafts

Distribution by Airline for October

		October 2021				October 2020				
Airline	Incoming Cargo (Ton)	Outgoing Cargo (Ton)	Cargo (Ton)	Rate of Total	Incoming Cargo (Ton)	Outgoing Cargo (Ton)	Cargo (Ton)	Rate of Total	Rate of Change	
OS AUSTRIAN AIRLINES	10	12	22	0.18%	8		8	0.13%	175.00%	
HY UZBEKISTAN AIR	7	13	21	0.17%						
LO LOT POLISH AIRLINES	14	3	16	0.13%						
KL K.L.M.	3	11	14	0.11%						
RO TAROM - RUMANIAN AIR TRAN	8	3	11	0.09%						
QS SMARTWINGS	8	2	10	0.08%						
BT AIR BALTIC	8	1	9	0.07%						
TP AIR PORTUGAL	3	6	9	0.07%						
SN BRUSSELS AIRLINES	7	1	8	0.06%						
B2 BELAVIA AIRLINE	3	5	8	0.06%	5	5	10	0.16%	-20.00%	
GF GULF AIR - BAHREIN	6	2	8	0.06%						
OTHERS	18	15	33	0.27%	12	17	29	0.48%	13.79%	
TOTAL	6,452	5,712	12,165		3,078	2,916	5,994		102.95%	





Accumulated Cargo Handling on Passengers Aircrafts

Distribution by Airline

		Accumulated 2021				Accumulated 2020				
Airline		Incoming Cargo (Ton)	Outgoing Cargo (Ton)	Cargo (Ton)	Rate of Total	Incoming Cargo (Ton)	Outgoing Cargo (Ton)	Cargo (Ton)	Rate of Total	Rate of Change
LY	EL AL ISRAEL AIRLINES	8,558	11,549	20,107	25.76%	7,281	6,714	13,994	23.11%	43.68%
UA	UNITED AIRLINES	5,480	8,957	14,436	18.50%	6,519	8,121	14,640	24.18%	-1.39%
TK	TURKISH AIRLINES	5,500	848	6,348	8.13%	3,629	1,066	4,695	7.75%	35.20%
DL	DELTA AIRLINES	2,849	3,046	5,894	7.55%	1,457	1,557	3,014	4.97%	95.55%
LX	SWISS INT'L AIRLINES	2,616	1,480	4,096	5.24%	2,450	1,519	3,969	6.55%	3.19%
AA	AMERICAN AIRLINES	1,367	2,321	3,688	4.72%					
AF	AIR FRANCE	2,212	1,117	3,330	4.26%	66	145	211	0.34%	
ET	ETHIOPIAN AIRLINES	1,870	1,177	3,046	3.90%	665	419	1,084	1.79%	180.99%
VS	VIRGIN ATLANTIC AIRWAYS	1,943	1,024	2,967	3.80%	909	626	1,536	2.53%	93.16%
AC	AIR CANADA	1,174	1,599	2,774	3.55%	1,442	1,723	3,165	5.22%	-12.35%
BA	BRITISH AIRWAYS PLC	1,206	1,223	2,429	3.11%	1,804	1,064	2,868	4.73%	-15.30%
IB	IBERIA	1,093	534	1,627	2.08%	709	218	927	1.53%	75.51%
EY	ETIHAD AIRWAYS	680	669	1,350	1.73%	9	9	18	0.02%	
SU	AEROFLOT RUSSIAN AIRLINES	423	812	1,235	1.58%	1,771	1,658	3,429	5.66%	-63.98%
PC	PEGASUS AIRLINES	580	343	923	1.18%	274	232	506	0.83%	82.41%
CX	CATHAY PACIFIC AIRWAYS	567	252	819	1.04%	557	400	957	1.58%	-14.42%
AI	AIR INDIA	252	240	492	0.63%	485	268	753	1.24%	-34.66%
FZ	FLYDUBAI	422	68	490	0.62%					
PS	UKRAINE INTL AIR	278	73	351	0.44%	160	103	263	0.43%	33.46%
LH	LUFTHANSA	236	101	337	0.43%	254	191	445	0.73%	-24.26%
UX	AIR EUROPA Lineas Aereas	109	88	197	0.25%					
A3	AEGEAN AIRLINES	121	46	168	0.21%	57	78	135	0.22%	24.44%





Accumulated Cargo Handling on Passengers Aircrafts

Distribution by Airline

		Accumulated 2021				Accumulated 2020				
Airline		Incoming Cargo (Ton)	Outgoing Cargo (Ton)	Cargo (Ton)	Rate of Total	Incoming Cargo (Ton)	Outgoing Cargo (Ton)	Cargo (Ton)	Rate of Total	Rate of Change
OS	AUSTRIAN AIRLINES	65	38	103	0.13%	46	22	68	0.11%	51.47%
LO	LOT POLISH AIRLINES	90	11	101	0.12%	65	22	87	0.14%	16.09%
RO	TAROM - RUMANIAN AIR TRAN	58	24	82	0.10%	37	27	65	0.10%	26.15%
B2	BELAVIA AIRLINE	32	34	66	0.08%	56	68	124	0.20%	-46.77%
HY	UZBEKISTAN AIR	27	35	61	0.07%	71	68	139	0.22%	-56.11%
KL	K.L.M.	13	44	57	0.07%	9	11	20	0.03%	185.00%
QS	SMARTWINGS	35	12	47	0.06%	65	34	98	0.16%	-52.04%
BT	AIR BALTIC	32	11	43	0.05%	2	3	5		
SN	BRUSSELS AIRLINES	24	3	27	0.03%	71	18	88	0.14%	-69.31%
TP	AIR PORTUGAL	4	10	14	0.01%	30	7	37	0.06%	-62.16%
GF	GULF AIR - BAHREIN	6	2	8	0.01%					
	OTHERS	178	136	314	0.40%	2,066	1,126	3,192	5.27%	-90.16%
	TOTAL	40,101	37,928	78,029		33,015	27,516	60,533		28.90%





Cargo Handling on Cargo Aircrafts

Distribution by Airlines October

		October 2021				October 2020				
Airline		Incoming Cargo (Ton)	Outgoing Cargo (Ton)	Cargo (Ton)	Rate of Total	Incoming Cargo (Ton)	Outgoing Cargo (Ton)	Cargo (Ton)	Rate of Total	Rate of Change
ICL	C.A.L ISRAELI CARGO	3,620	1,245	4,865	21.91%	2,475	1,225	3,700	17.68%	31.48%
LY	EL AL ISRAEL AIRLINES	2,771	1,844	4,615	20.79%	2,020	1,091	3,111	14.87%	48.34%
QY	EUROPEAN AIR TRANSPORT	1,197	796	1,993	8.97%	1,076	859	1,935	9.24%	2.99%
TK	TURKISH AIRLINES	1,451	304	1,755	7.90%	1,491	434	1,925	9.20%	-8.83%
LH	LUFTHANSA	745	762	1,508	6.79%	640	530	1,170	5.59%	28.88%
MNB	MNG CARGO AIRLINES	1,181	232	1,413	6.36%	1,127	257	1,384	6.61%	2.09%
AZG	SILK WAY WEST AIRLINES	589	642	1,231	5.54%	654	829	1,484	7.09%	-17.04%
CX	CATHAY PACIFIC AIRWAYS	569	328	897	4.04%	257	195	452	2.16%	98.45%
AJT	AMERIJET INTERNATIONAL	437	430	866	3.90%					
FX	FEDERAL EXPRESS	505	335	840	3.78%	465	333	798	3.81%	5.26%
ET	ETHIOPIAN AIRLINES	438	93	531	2.39%					
3V	ASL AIRLINES BELGIUM	260	195	455	2.04%	321	201	522	2.49%	-12.83%
EY	ETIHAD AIRWAYS	197	240	438	1.97%					
RSB	RUBY STAR	77	96	173	0.77%					
ABD	ATLANTA ICELANDIC	82	74	155	0.69%					
M4	POSTE AIR CARGO	106	35	141	0.63%	7		7	0.03%	
3U	SICHUAN AIRLINES	62	27	89	0.40%	280	134	414	1.97%	-78.50%
IB	IBERIA	51	25	75	0.33%					
VN	VIETNAM AIRLINES	43	2	44	0.19%					
SU	AEROFLOT RUSSIAN AIRLINES	43		43	0.19%	191	156	347	1.65%	-87.60%
VDA	VOLGA DNEPER	22		22	0.09%					
	OTHERS	25	22	47	0.21%	2,442	1,229	3,671	17.54%	-98.71%





Cargo Handling on Cargo Aircrafts

Distribution by Airlines October

Airline	October 2021				October 2020				
	Incoming Cargo (Ton)	Outgoing Cargo (Ton)	Cargo (Ton)	Rate of Total	Incoming Cargo (Ton)	Outgoing Cargo (Ton)	Cargo (Ton)	Rate of Total	Rate of Change
TOTAL	14,470	7,726	22,196		13,447	7,473	20,920		6.09%





Accumulated Cargo Handling on Cargo Aircrafts

Distribution by Airline

		Accumulated 2021				Accumulated 2020				
Airline		Incoming Cargo (Ton)	Outgoing Cargo (Ton)	Cargo (Ton)	Rate of Total	Incoming Cargo (Ton)	Outgoing Cargo (Ton)	Cargo (Ton)	Rate of Total	Rate of Change
ICL	C.A.L ISRAELI CARGO	34,189	17,886	52,075	22.71%	15,640	9,299	24,939	12.59%	108.80%
LY	EL AL ISRAEL AIRLINES	25,467	15,321	40,788	17.78%	23,957	14,284	38,241	19.31%	6.66%
TK	TURKISH AIRLINES	22,510	5,007	27,517	12.00%	15,190	4,810	20,000	10.10%	37.58%
QY	EUROPEAN AIR TRANSPORT	11,626	8,083	19,710	8.59%	9,756	6,923	16,679	8.42%	18.17%
MN B	MNG CARGO AIRLINES	12,779	2,402	15,181	6.62%	9,759	2,571	12,331	6.22%	23.11%
AZG	SILK WAY WEST AIRLINES	6,543	7,424	13,967	6.09%	7,508	7,065	14,572	7.36%	-4.15%
LH	LUFTHANSA	6,077	4,855	10,932	4.76%	6,279	4,903	11,182	5.64%	-2.23%
FX	FEDERAL EXPRESS	5,094	3,385	8,479	3.69%	4,437	3,227	7,664	3.87%	10.63%
CX	CATHAY PACIFIC AIRWAYS	3,600	2,319	5,920	2.58%	1,421	941	2,362	1.19%	150.63%
3V	ASL AIRLINES BELGIUM	2,655	1,641	4,296	1.87%	3,122	1,833	4,954	2.50%	-13.28%
EY	ETIHAD AIRWAYS	1,405	1,629	3,034	1.32%	8		8		
RSB	RUBY STAR	2,193	316	2,510	1.09%					
ET	ETHIOPIAN AIRLINES	1,460	654	2,114	0.92%	158	70	228	0.11%	
AJT	AMERIJET INTERNATIONAL	989	910	1,899	0.82%					
3U	SICHUAN AIRLINES	980	387	1,367	0.59%	2,869	697	3,566	1.80%	-61.66%
IB	IBERIA	924	355	1,279	0.55%					
ABD	ATLANTA ICELANDIC	667	380	1,047	0.45%	246	66	312	0.15%	
SU	AEROFLOT RUSSIAN AIRLINES	426	506	933	0.40%	714	546	1,261	0.63%	-26.01%
VN	VIETNAM AIRLINES	685	7	692	0.30%					
M4	POSTE AIR CARGO	479	183	662	0.28%	7		7		
VDA	VOLGA DNEPER	30	68	98	0.04%					
	OTHERS	9,573	5,231	14,804	6.45%	23,350	16,316	39,667	20.03%	-62.67%





Accumulated Cargo Handling on Cargo Aircrafts

Distribution by Airline

Airline	Accumulated 2021				Accumulated 2020				Rate of Change
	Incoming Cargo (Ton)	Outgoing Cargo (Ton)	Cargo (Ton)	Rate of Total	Incoming Cargo (Ton)	Outgoing Cargo (Ton)	Cargo (Ton)	Rate of Total	
TOTAL	150,354	78,948	229,304		124,421	73,550	197,972		15.82%





Cargo Handling on Cargo Aircrafts

Distribution by Countries for October

Country	October 2021				October 2020				
	Incoming Cargo (Ton)	Outgoing Cargo (Ton)	Cargo (Ton)	Rate of Total	Incoming Cargo (Ton)	Outgoing Cargo (Ton)	Cargo (Ton)	Rate of Total	Rate of Change
BELGIUM	3,848	3,214	7,062	31.81%	3,335	3,356	6,691	31.98%	5.54%
GERMANY	2,783	834	3,617	16.29%	2,469	1,329	3,799	18.15%	-4.79%
CHINA	2,507	696	3,203	14.43%	2,443	568	3,012	14.39%	6.34%
TURKEY	1,944	536	2,480	11.17%	2,084	742	2,827	13.51%	-12.27%
AZERBAIJAN	589	659	1,248	5.62%	654	829	1,484	7.09%	-15.90%
NORWAY	1,020		1,020	4.59%	1,060		1,060	5.06%	-3.77%
EGYPT		762	762	3.43%		68	69	0.32%	
UNITED ARAB EMIRATES	462	287	749	3.37%					
ETHIOPIA	438	93	531	2.39%					
CYPRUS	313	58	372	1.67%	551	25	575	2.74%	-35.30%
FRANCE	103	243	346	1.55%	71	291	362	1.73%	-4.41%
INDIA	151	181	332	1.49%	110	10	121	0.57%	174.38%
ITALY	112	40	152	0.68%	14	7	21	0.10%	
FINLAND		96	96	0.43%					
SPAIN	51	25	75	0.33%					
SWITZERLAND	44		44	0.19%					
RUSSIAN FEDERATION	43		43	0.19%	493	167	659	3.15%	-93.47%
VIETNAM	39	2	40	0.18%					
UNITED KINGDOM	12		12	0.05%	45	40	86	0.41%	-86.04%
OTHERS	11	1	11	0.04%	117	39	156	0.74%	-92.94%
TOTAL	14,470	7,726	22,196		13,447	7,473	20,920		6.09%





Accumulated Cargo Handling on Cargo Aircrafts

Distribution by Countries

Countries	Accumulated 2021				Accumulated 2020				
	Incoming Cargo (Ton)	Outgoing Cargo (Ton)	Cargo (Ton)	Rate of Total	Incoming Cargo (Ton)	Outgoing Cargo (Ton)	Cargo (Ton)	Rate of Total	Rate of Change
BELGIUM	36,914	33,441	70,355	30.68%	31,310	32,309	63,618	32.13%	10.58%
TURKEY	30,255	7,580	37,835	16.49%	19,940	8,465	28,405	14.34%	33.19%
GERMANY	25,273	9,185	34,457	15.02%	24,520	12,319	36,840	18.60%	-6.46%
CHINA	24,709	6,032	30,741	13.40%	13,403	2,361	15,765	7.96%	94.99%
AZERBAIJAN	6,544	7,372	13,916	6.06%	7,466	7,139	14,605	7.37%	-4.71%
NORWAY	9,264	51	9,314	4.06%	9,142		9,142	4.61%	1.88%
UNITED ARAB EMIRATES	2,295	1,911	4,206	1.83%	24		24	0.01%	
CYPRUS	3,376	724	4,100	1.78%	6,606	427	7,033	3.55%	-41.70%
EGYPT		3,895	3,895	1.69%	8	119	128	0.06%	
FRANCE	1,004	2,119	3,122	1.36%	1,182	1,845	3,027	1.52%	3.13%
UNITED KINGDOM	1,281	1,350	2,631	1.14%	2,788	2,624	5,412	2.73%	-51.38%
ETHIOPIA	1,460	654	2,114	0.92%	158	74	232	0.11%	
SPAIN	1,632	362	1,993	0.86%	1,341	439	1,780	0.89%	11.96%
RUSSIAN FEDERATION	944	563	1,507	0.65%	1,135	755	1,890	0.95%	-20.26%
INDIA	795	381	1,176	0.51%	318	177	495	0.25%	137.57%
ITALY	675	281	956	0.41%	381	113	495	0.25%	93.13%
VIETNAM	681	6	687	0.29%					
SWITZERLAND	232	202	434	0.18%	479	64	543	0.27%	-20.07%
FINLAND		98	98	0.04%					
OTHERS	3,024	2,741	5,765	2.51%	4,219	4,320	8,539	4.31%	-32.48%
TOTAL	150,354	78,948	229,304		124,421	73,550	197,972		15.82%



Domestic Activity

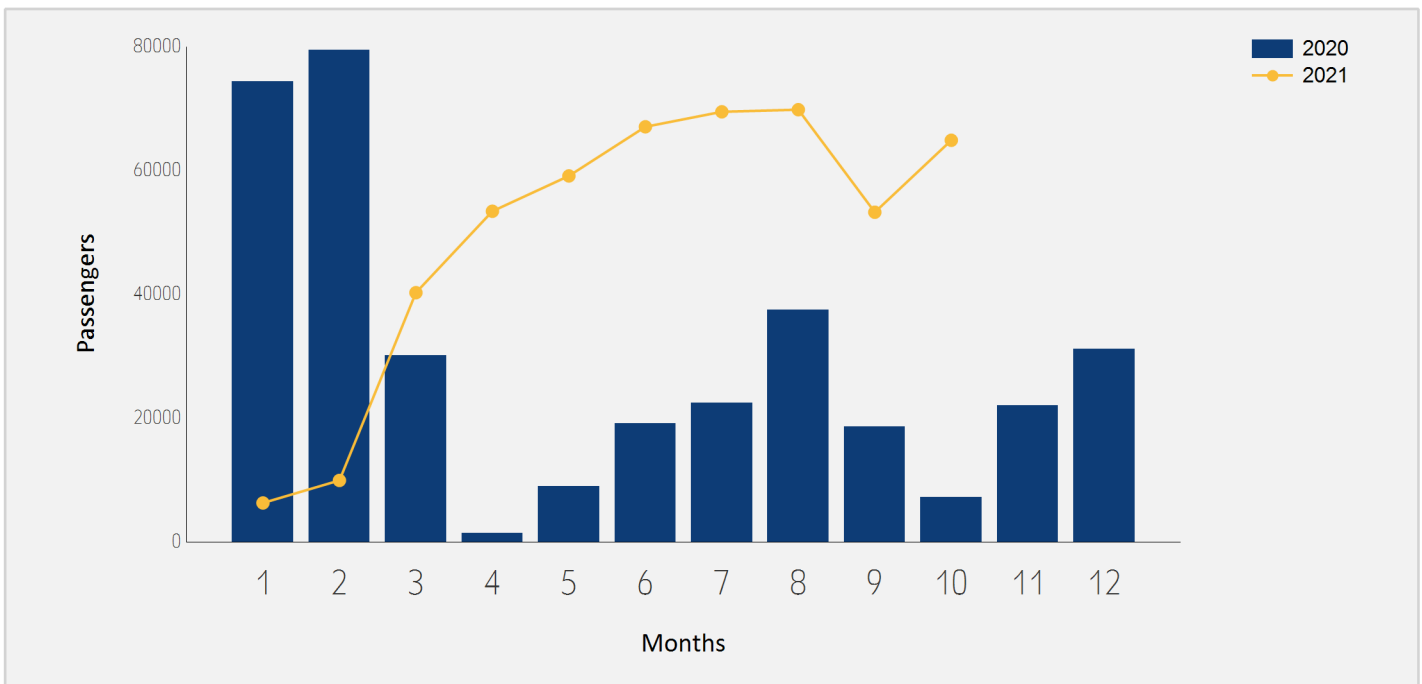




Domestic Passenger Traffic

Distribution by Months

Month	2021	2020	Rate of Change
January	6,294	74,380	-91.53%
February	9,936	79,475	-87.49%
March	40,263	30,137	33.59%
April	53,421	1,412	
May	59,126	8,989	
June	67,065	19,115	
July	69,490	22,417	
August	69,828	37,477	86.32%
September	53,261	18,645	185.65%
October	64,886	7,164	
Total	493,570	299,211	64.95%

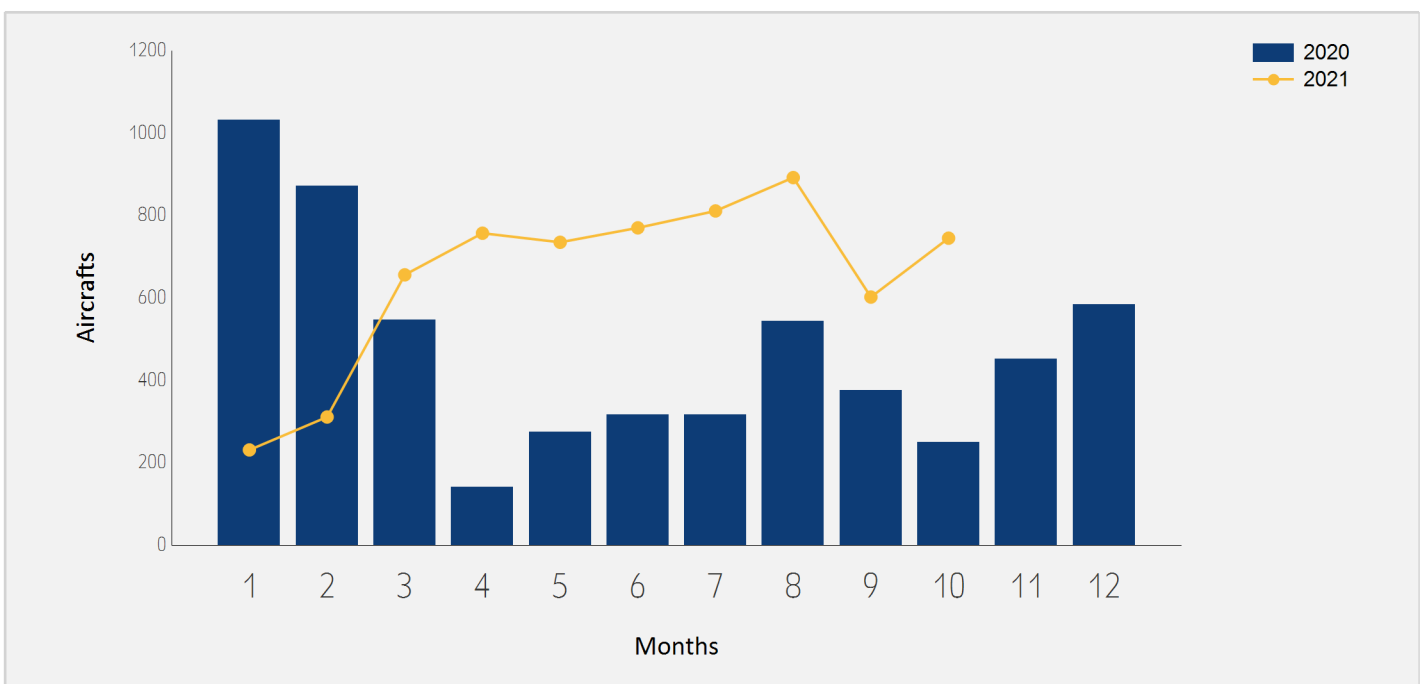




Domestic Aircrafts Traffic

Distribution by Months

Month	2021	2020	Rate of Change
January	231	1,032	-77.61%
February	311	871	-64.29%
March	656	547	19.92%
April	757	141	
May	735	274	168.24%
June	770	317	142.90%
July	811	316	156.64%
August	892	543	64.27%
September	602	376	60.10%
October	745	250	198.00%
Total	6,510	4,667	39.49%





Domestic Passengers Traffic

Distribution by Airlines for October

		October 2021		October 2020		
Airline		Passengers	Rate of Total	Passengers	Rate of Total	Rate of Change
IZ	ARKIA ISRAELI AIRLINES	39,787	61.31%	1,294	18.06%	
6H	ISRAIR AIRLINES	24,897	38.37%	5,818	81.21%	
	OTHERS	202	0.31%	52	0.72%	
	TOTAL	64,886		7,164		

Accumulated Domestic Passengers Traffic

Distribution by Airlines

		Accumulated 2021		Accumulated 2020		
Airline		Passengers	Rate of Total	Passengers	Rate of Total	Rate of Change
IZ	ARKIA ISRAELI AIRLINES	282,632	57.26%	142,757	47.71%	97.98%
6H	ISRAIR AIRLINES	210,037	42.55%	155,960	52.12%	34.67%
	OTHERS	901	0.18%	494	0.16%	82.38%
	TOTAL	493,570		299,211		64.95%





Domestic Passenger Traffic

Distribution by Destinations for October

Destination	October 2021		October 2020		Rate of Change
	Passengers	Rate of Total	Passengers	Rate of Total	
RAMON	64,442	99.31%	7,135	99.59%	
OTHERS	444	0.68%	29	0.40%	
TOTAL	64,886		7,164		

Accumulated Domestic Passenger Traffic

Distribution by Destinations

Destination	Accumulated 2021		Accumulated 2020		Rate of Change
	Passengers	Rate of Total	Passengers	Rate of Total	
RAMON	492,317	99.74%	297,761	99.51%	65.33%
OTHERS	1,253	0.25%	1,450	0.48%	-13.58%
TOTAL	493,570		299,211		64.95%

